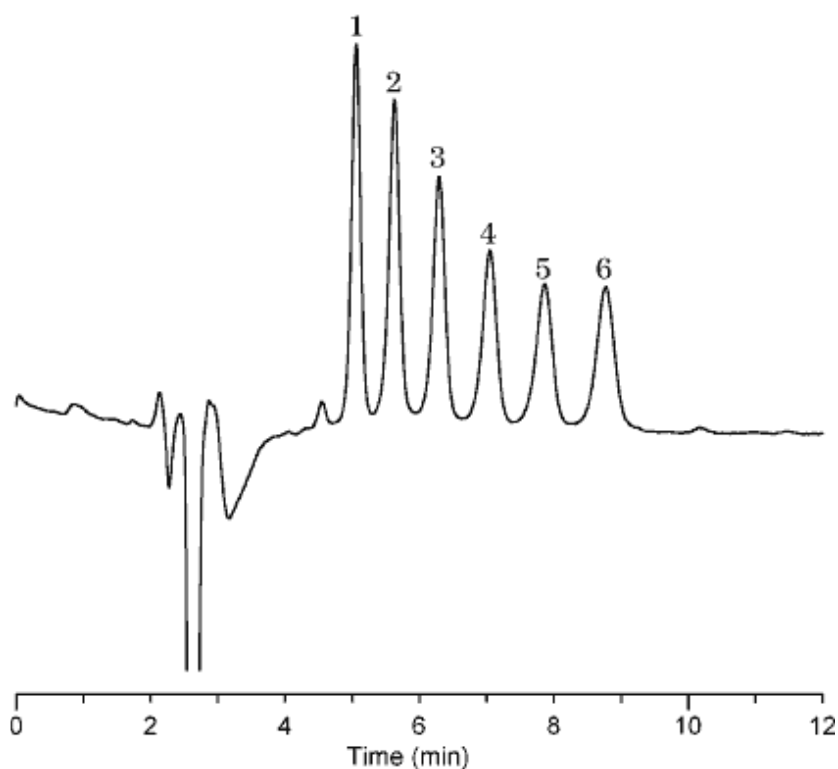


## 40. Malto oligosugars

Data No. LA094-0000



Column : Inertsil NH2  
5µm  
150 × 4.6 mm I.D.

Column Cat. No. : 5020-05546

Eluent : CH<sub>3</sub>CN/H<sub>2</sub>O = 55/45

Flow rate : 1.0 mL/min.

Col. Temp. : 30°C

Detection : RI

Injection Vol. :

Sample : Malto Oligosugars

Solutes : 1. Maltose (1.67 mg/mL)  
2. Maltotriose (1.67 mg/mL)  
3. Maltotetraose (1.67 mg/mL)  
4. Maltopentaose (1.67 mg/mL)  
5. Maltohexaose (1.67 mg/mL)  
6. Maltoheptaose (1.67 mg/mL)