

Portfolio

Reina Omar Moussa

2025



About Me

I am Reina Omar Moussa, a recent graduate in Interior Design with a strong passion for creating spaces that are both functional and timeless. My academic journey has provided me with a solid foundation in spatial planning, materials, lighting, and design theory, while practical studio projects have refined my skills in concept development, detailing, and client presentation.

Throughout my studies, I explored a variety of design approaches, from residential interiors to large-scale communal spaces, allowing me to develop adaptability and a keen understanding of how to design for different needs and contexts.

With a fresh perspective, technical proficiency, and a commitment to continuous learning, I aim to design interiors that enhance the human experience, foster comfort and beauty, and stand the test of time.



Anchoring Communal Living 01
Dormitory Renovation

PUBLIC Bicycle Showroom 02
Commercial Design

Inhabitable Structure 03
Experiential Design

The Elarah House 04
Residential Design

Connected 05
Furniture Piece

Corrugated 06
Furniture Piece

Table of Contents

Anchoring Communal Living

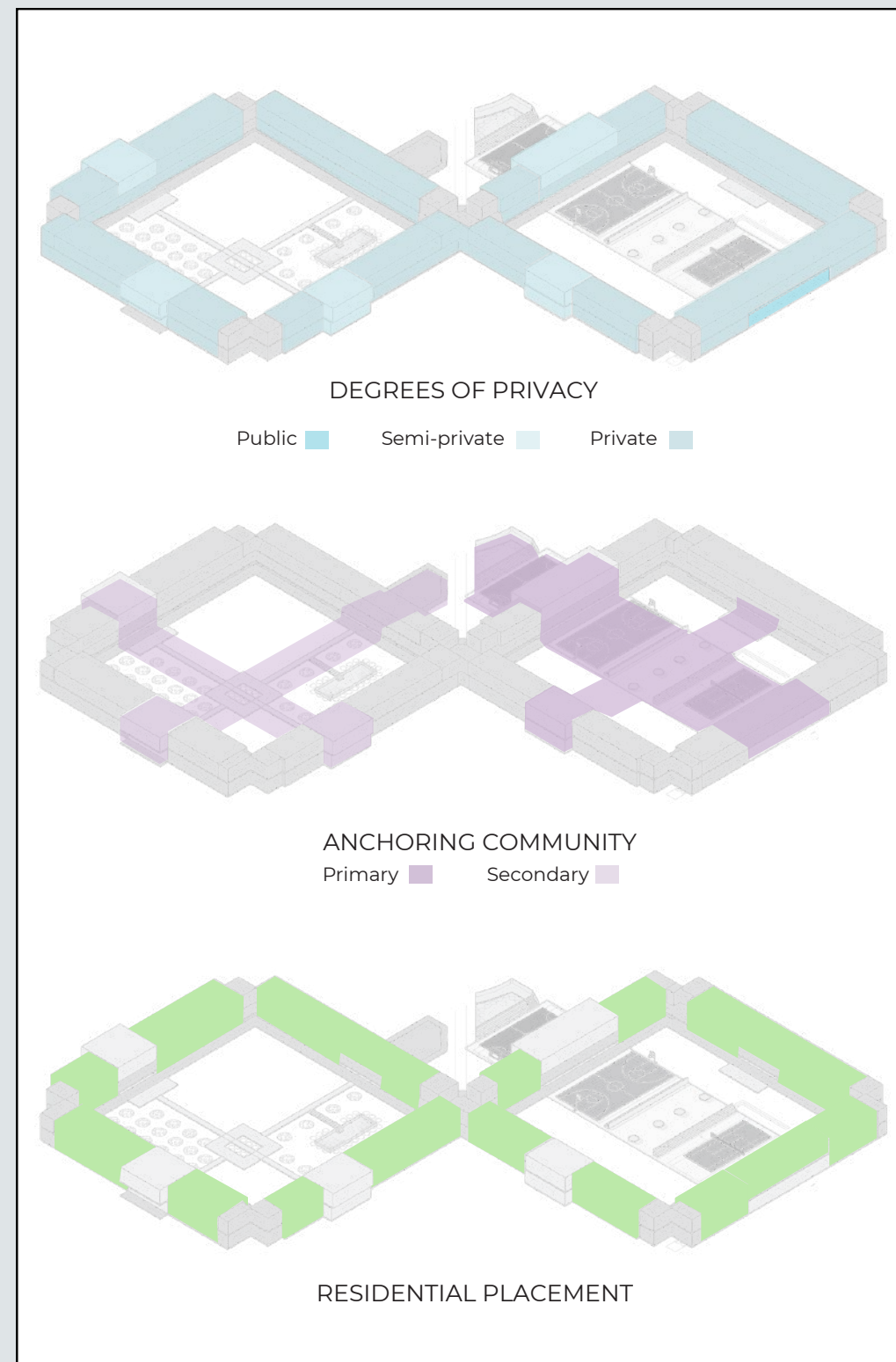
DORMITORY RENOVATION

2024

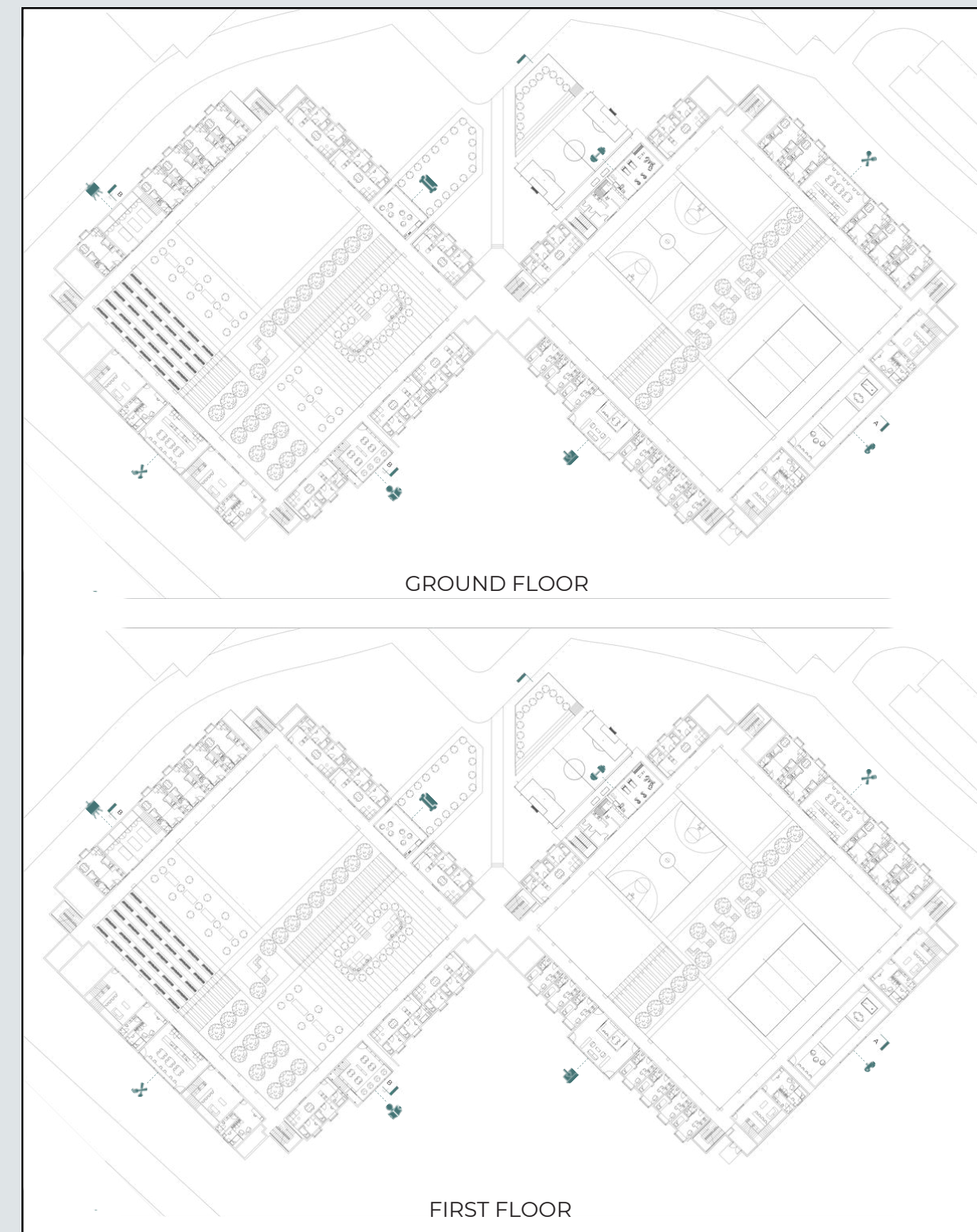
ABOUT Designed by Reina Omar Moussa and Maha Palekar, this renovation reimagines a residential hall block at the American University of Sharjah to foster connection and enhance student living. Intersecting communal zones, a refined material palette, and a revitalized central courtyard create inviting spaces for interaction, relaxation, and community.

The primary concern we aimed to address with the dorm renovation was that of connectivity of communal spaces, not just within and between the dorm blocks, but even beyond them into the other dorm building. We sought to encourage social connections between residents through anchoring communal swaths; a strategy where perpendicular intersecting swaths of space indicate the placement of different communal spaces within each block. These spaces are nested within blocks of residential spaces for easy access but cater to different needs – encouraging students to go beyond their block and interact in different areas of the halls. We addressed the usability of the courtyard space, with walkways and shaded areas for students to access spaces across the courtyard, as well as interact and socialize in outdoor lounging areas.

The walkways and connected communal spaces share a continuous materiality, with the latter distinguished by glass walls and surrounding circulation gaps.

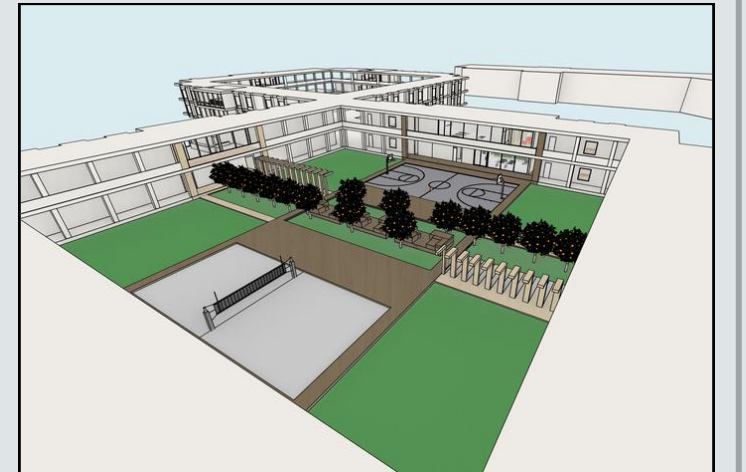
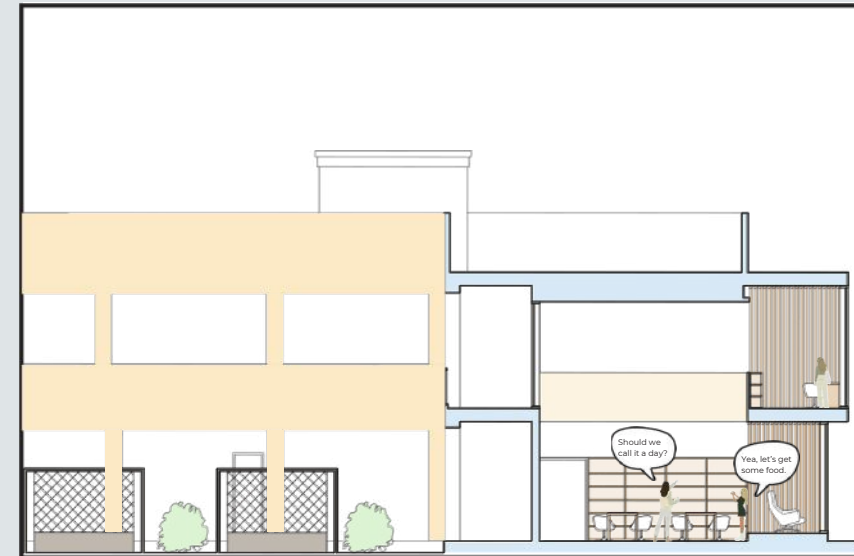
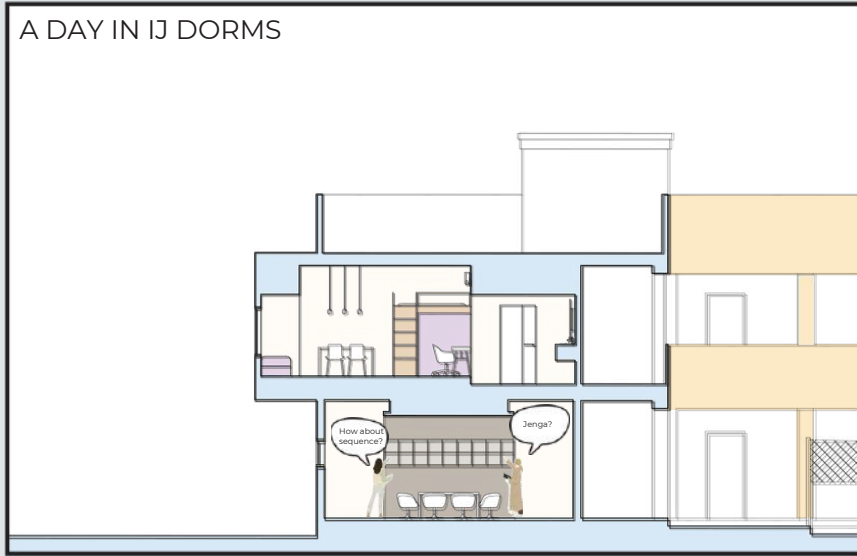


Process Diagrams



Master Floor Plans

A DAY IN IJ DORMS



PUBLIC Bicycle Showroom

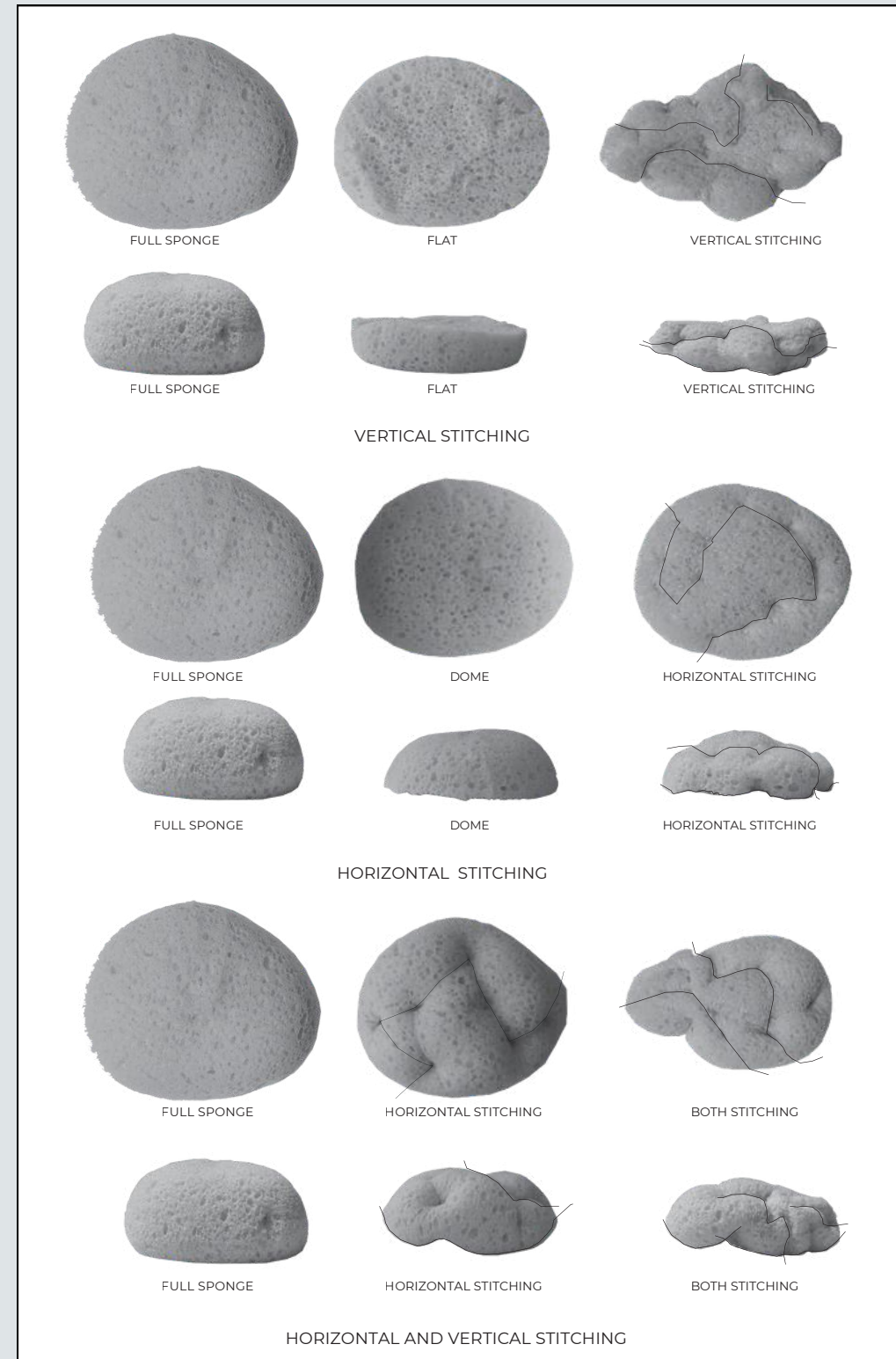
COMMERCIAL DESIGN

2023

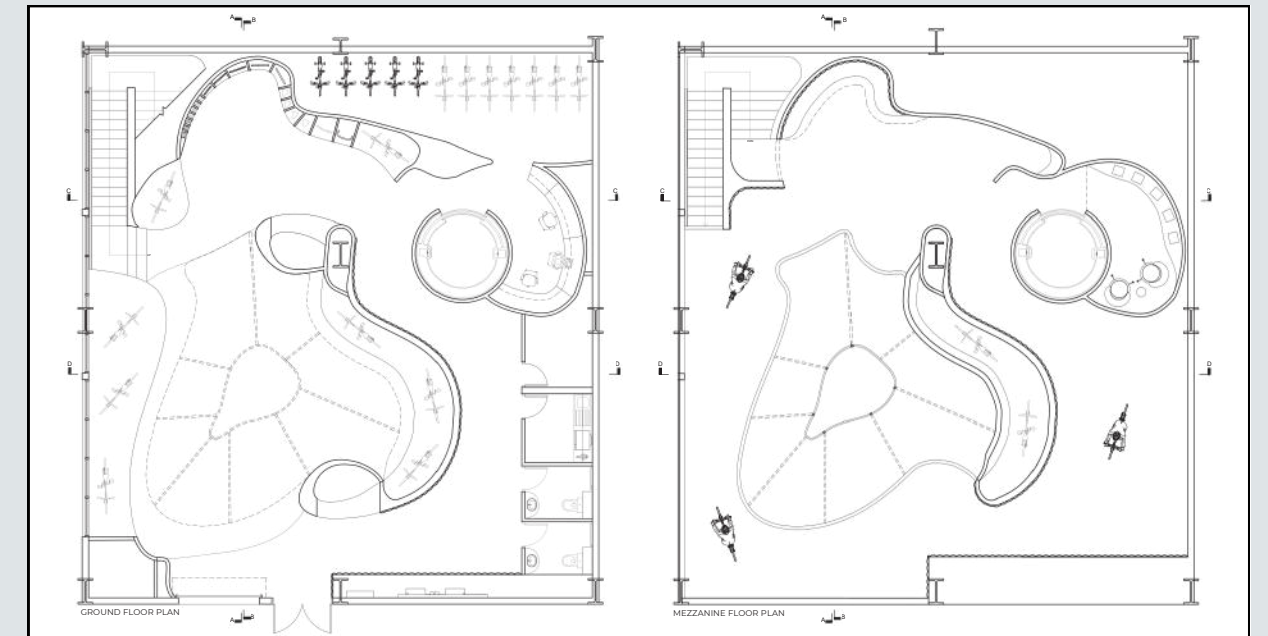
ABOUT This commercial design exercise was completed as part of a studio course early on in my journey as an interior designer. The project combined branding and conceptual design, encouraging an understanding of how these elements work hand in hand to shape a cohesive and memorable spatial experience.

PUBLIC Bikes is a California-based brand founded in 2010 by Rob Forbes, inspired by the bike-friendly culture of cities like Amsterdam. Known for their retro-modern aesthetic, they create stylish, durable city bikes with practical features like fenders, racks, and chainguards. Designed for everyday riders seeking an elegant, low-maintenance option for commuting or leisure, their models are sold primarily direct-to-consumer and through select retailers and corporate partnerships.

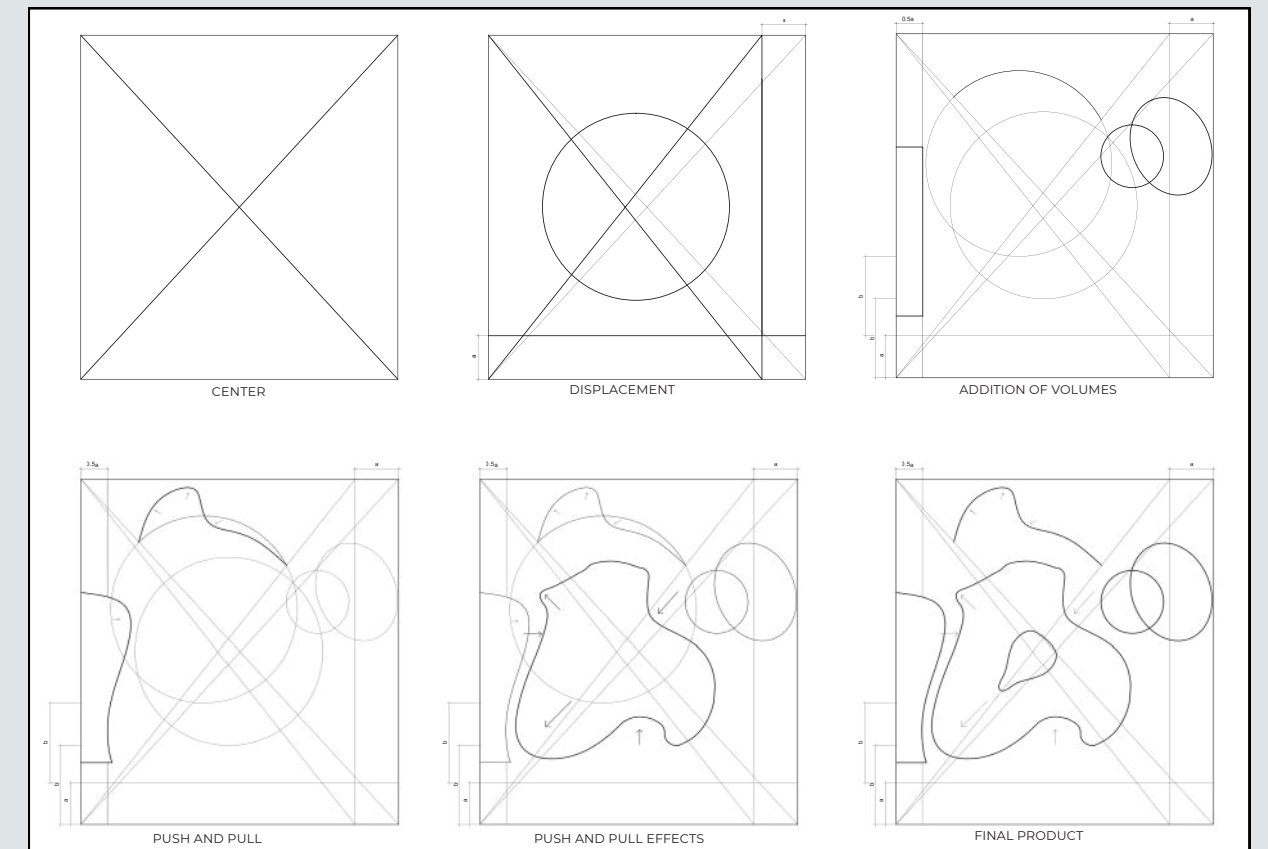
This project is inspired by Newton's Third Law of Motion: every action has an equal and opposite reaction, though not all reactions are immediately visible to the naked eye. To explore this idea, I began experimenting with sewing into sponges—initially randomly to see how the material would respond, and later with more intention as patterns and behaviors emerged. The process was documented and observations were interpreted through 2D drawings and ultimately translated into detailed 3D renders, creating a layered visual exploration of cause and effect.



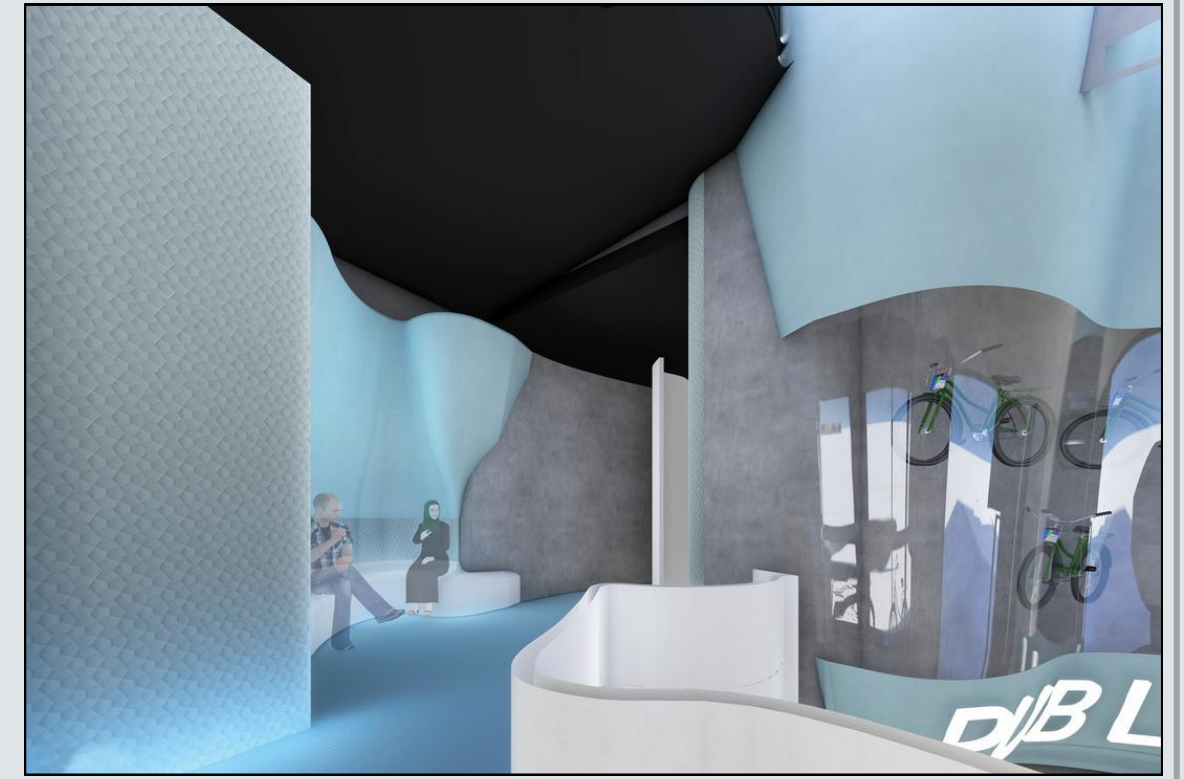
Conceptual Model Studies



Floor Plans



Generative Diagrams



Inhabitable Structure

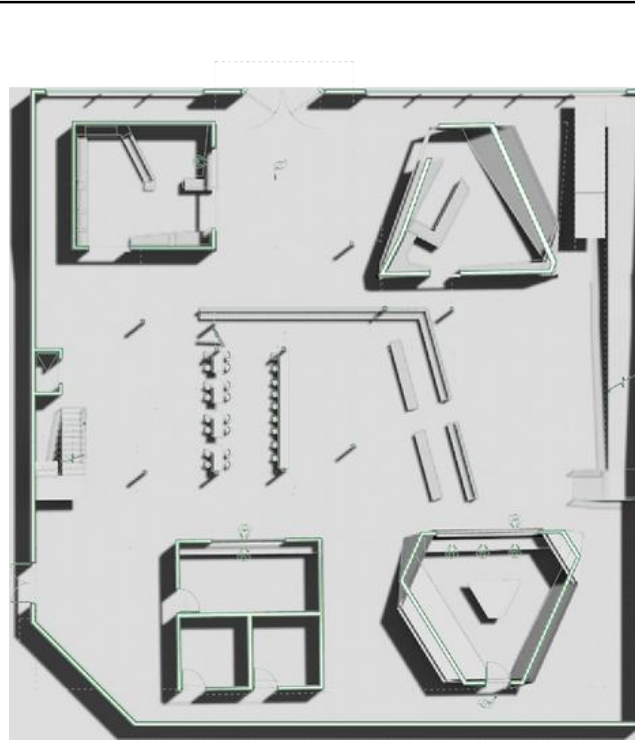
EXPERIENTIAL DESIGN

2023

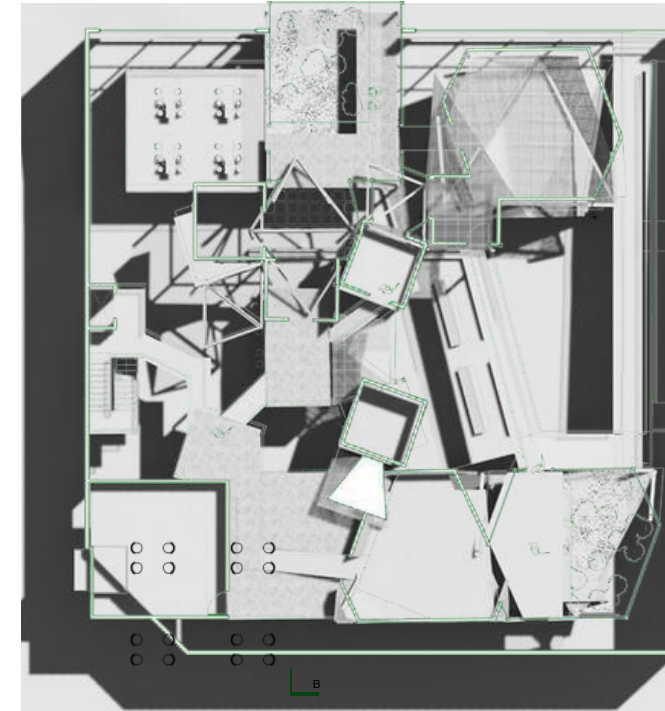
ABOUT This project proposes an inhabitable architecture shaped by principles of crystallization: a spatial system formed through the accumulation, intersection, and solidification of discrete volumes. This environment resists traditional ideas of enclosure and orientation, offering instead a fragmented, shifting experience of space.

Composed of angular geometries, translucent partitions, and varied material textures, the structure invites both movement and pause. Surfaces fold, reflect, and refract, creating moments of opacity and clarity, solidity and void. The spatial sequence is intentionally disorienting yet navigable, encouraging exploration through overlapping pathways, suspended platforms, and visual ambiguities.

Designed as an experiential landscape, the project is not merely a container for activity but an active participant in it. It is meant to be inhabited through motion, observation, and interaction, an architectural instrument for perception that heightens spatial awareness, disrupts habitual patterns of movement, and proposes new ways of occupying and understanding built form. Through its fragmented order and crystalline logic, it invites occupants to linger, explore, and reconsider the possibilities of architectural space.



GROUND FLOOR PLAN

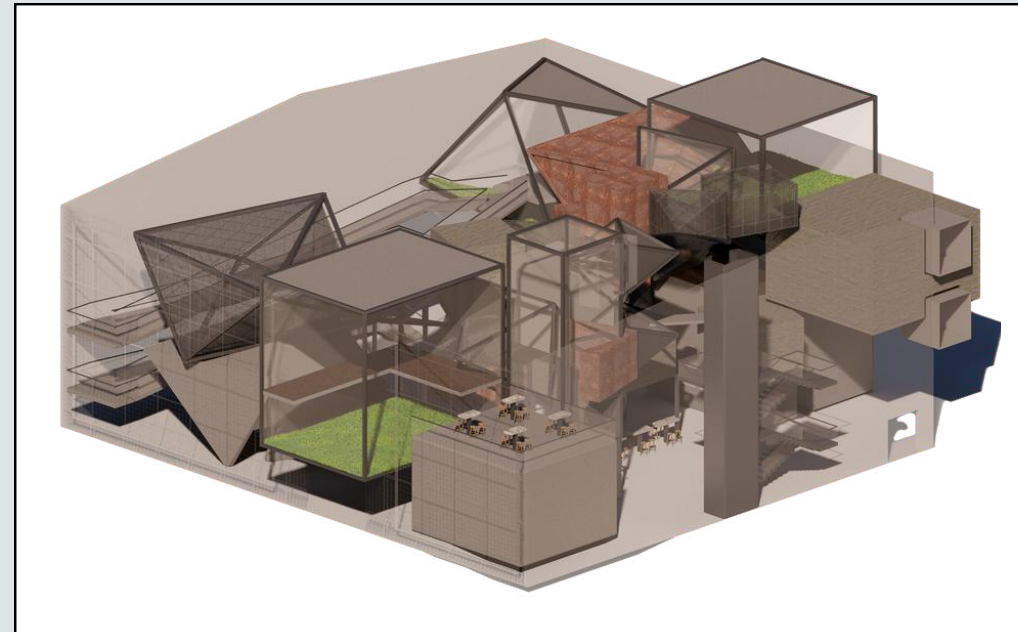


FIRST FLOOR PLAN

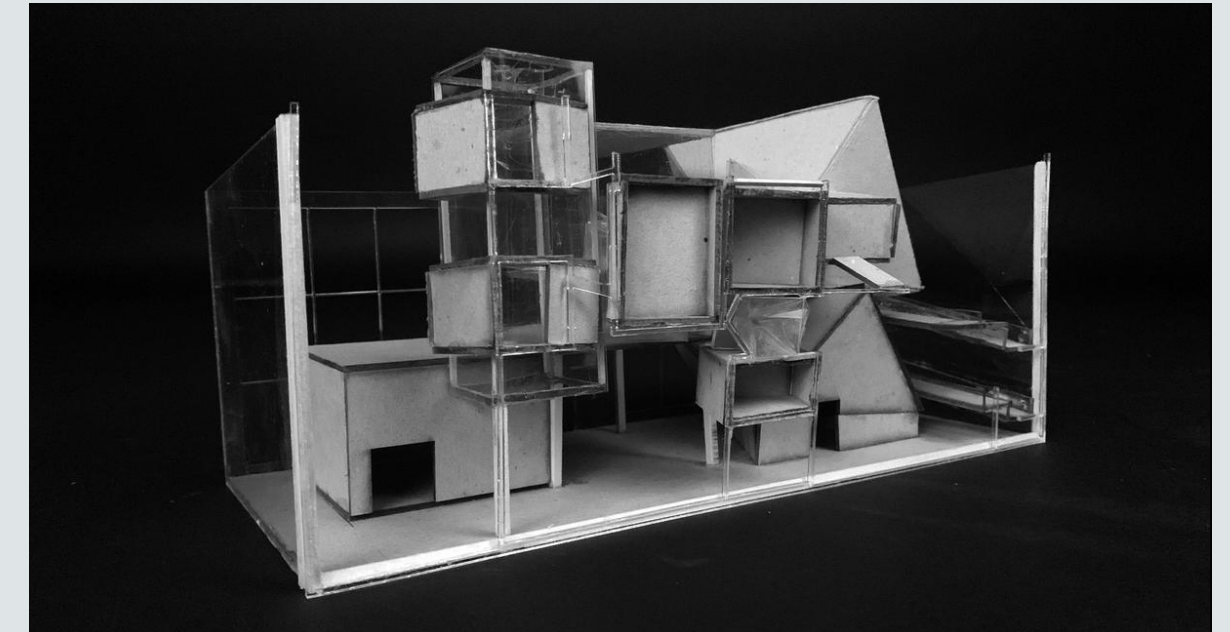


ROOF PLAN

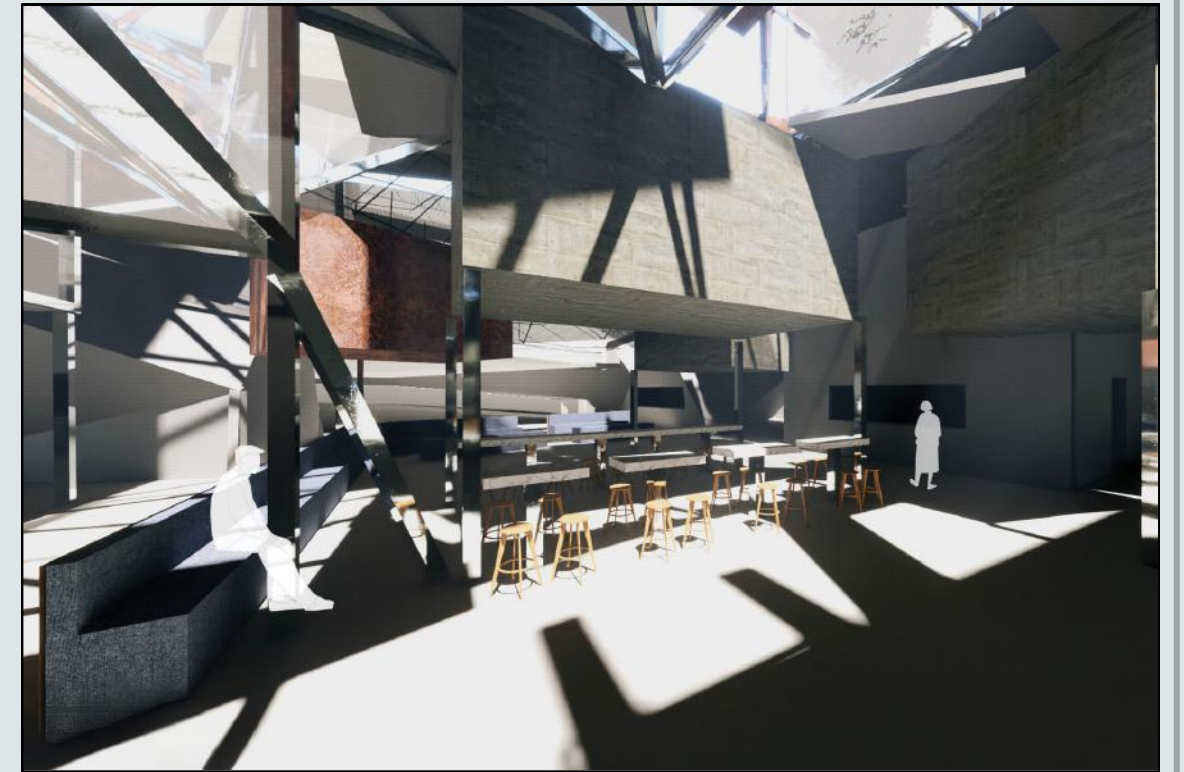
Floor Plans



Final 3D Axonometric



Sectional Physical Model



Process Physical Model

The Elarah House

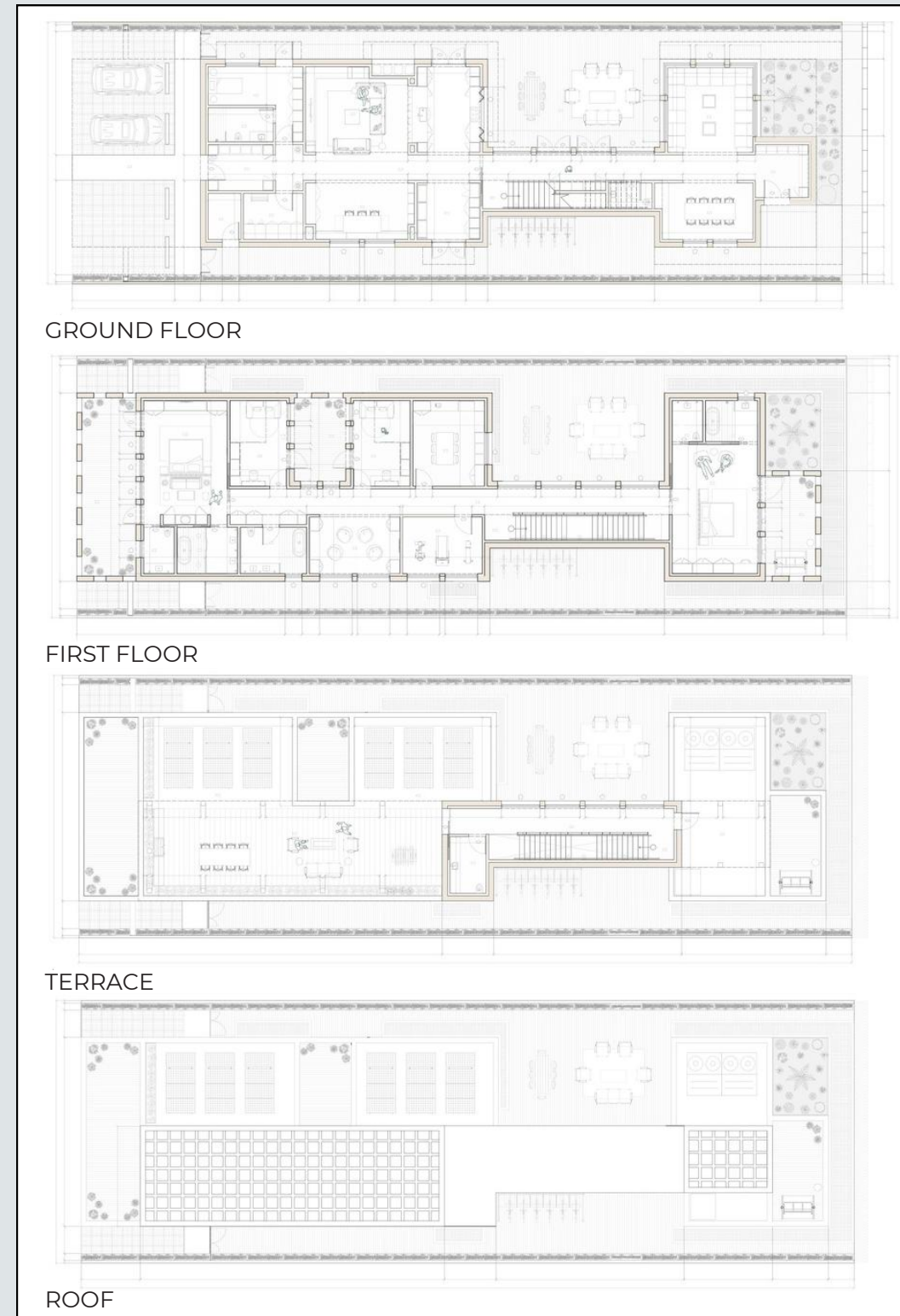
RESIDENTIAL DESIGN

2025

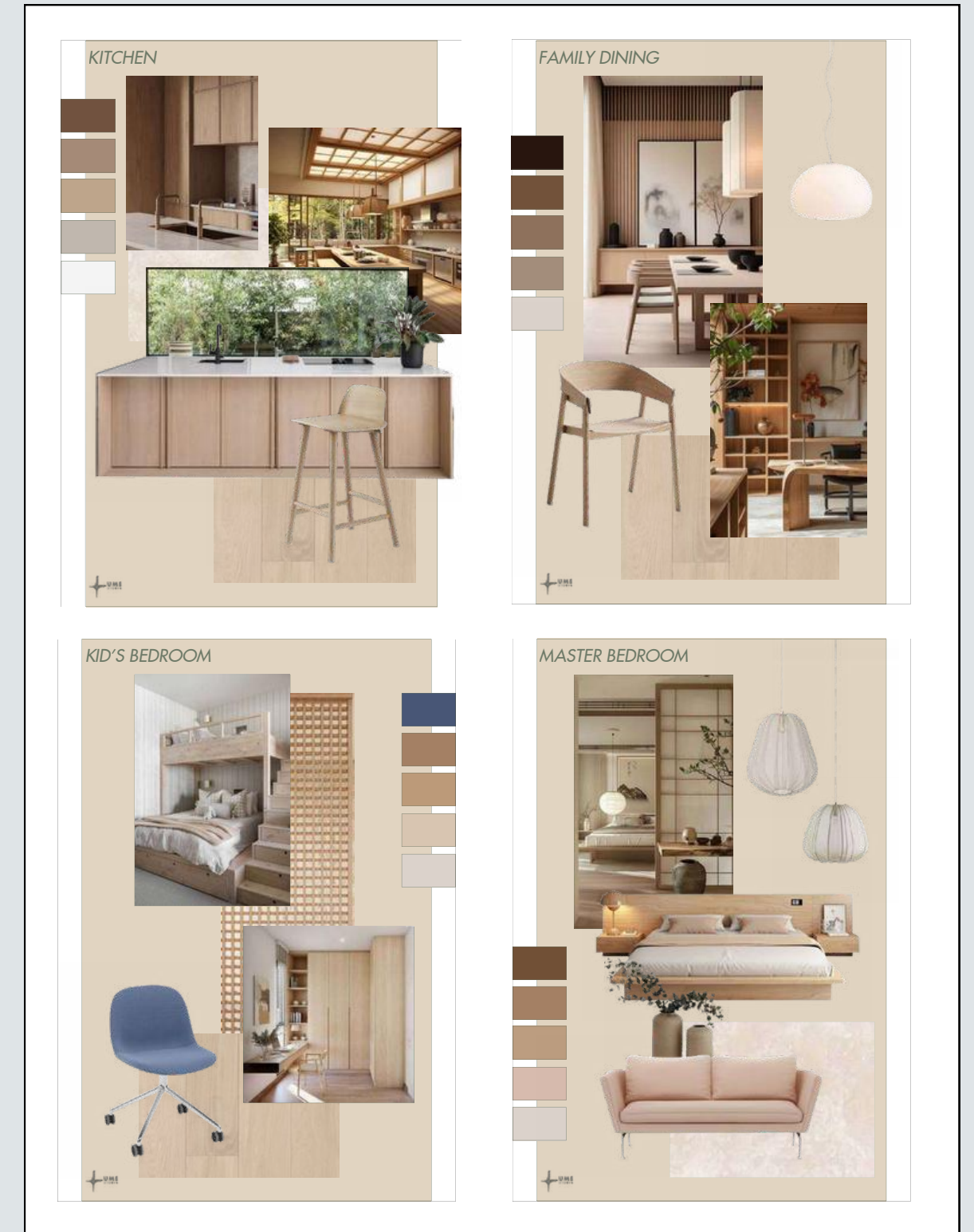
ABOUT Developed in collaboration with Maha Palekar as part of a comprehensive design studio, this residential project reimagines the home as both a sanctuary and a model for sustainable living.

Guided by human-centric design principles, it prioritizes comfort, accessibility, and the seamless integration of nature into everyday life. The layout encourages fluid movement between indoor and outdoor spaces, creating moments for gathering, reflection, and connection. It also responds to the evolving needs that emerged after COVID-19, incorporating adaptable rooms designed for remote work, spaces that support home-based wellness (such as areas for exercise, meditation, and relaxation) and flexible living arrangements that can shift with the changing rhythms of daily life.

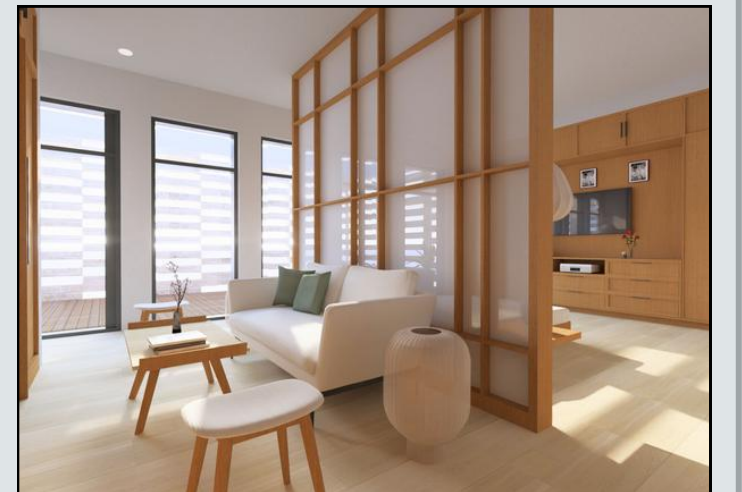
Constructed with fctdterra, a low-impact and locally sourced material, the home reduces environmental strain while maintaining thermal comfort and durability. Sustainability is further embedded through on-site hydroponic farms that provide fresh produce year-round and solar panels that generate renewable energy. Together, these strategies create a self-sufficient environment that not only minimizes ecological footprint but also enriches the rhythms and experiences of daily living.



Construction Floor Plans



Moodboards



Connected

FURNITURE DESIGN

2024

ABOUT This multifunctional dorm furniture is designed to prioritize adaptability, comfort and spatial efficiency.

At its core is a modular bed-and-seating system that effortlessly transitions between a private sleeping zone and a communal living space. This flexible configuration supports both solitude and social interaction, aligning with the dynamic rhythms of student life. The design maximizes functionality with a compact footprint by incorporating hidden compartments, collapsible elements and seamlessly integrated components. A refined material palette, featuring oak wood, pale blue woven fabric, stainless steel and painted metal, blends warmth with a contemporary edge. Concealed connecting mechanisms preserve a clean, uncluttered, aesthetic while enabling intuitive transformations.

Responding to the evolving needs of student life by fostering community, versatility and comfort, this project reimagines small-space living as an adaptive, stylish ecosystem that grows with its users - a simple, effective approach to flexible dorm living.



Axonometric Views



Renders

Corrugated

FURNITURE DESIGN

2024

ABOUT This furniture piece is an experimental design created through the process of veneer pressing, where thin sheets of veneer are molded into corrugated forms to achieve both structural strength and a distinctive aesthetic. The repetition of this corrugated language across both the seat and the legs creates a cohesive system in which geometry becomes the primary source of rigidity and expression.

The assembly relies on a precise joinery technique: CNC-cut slits in the corrugated legs allow the seat panel to slot seamlessly into place. This interlocking system eliminates the need for adhesives or fasteners, emphasizing material honesty and structural clarity while also allowing for easy assembly and disassembly. The corrugated geometry of the legs works in harmony with the seat, distributing weight evenly and reinforcing the structural integrity of the piece.

By merging material efficiency, digital fabrication, and geometric innovation, the design reimagines veneer as a structural element. The result is a lightweight, modular piece that balances strength, function, and sculptural presence.

The project was developed in a course (IDE335) taught by Associate Professor Ammar Kalo at the College of Architecture, Art and Design
Photo Credits: Ammar Kalo, Reina Omar Moussa

