

A73 gPV 1000 VDC Fuse 10x38 mm



FEATURES:

- 1000 VDC, 10x38 mm PV fuse link
- Rated Current: 1-30 A
- Breaking Capacity: 30 kA at 1000 VDC
- Time Constant: 1-3 ms
- Special design with silver plated caps for high-power PV applications
- Standards: UL 248-19
- Approvals: UL (File: E490190)
- BH100-01, BH100-02 holders for DIN rail mounting

ELECTRICAL SPECIFICATIONS

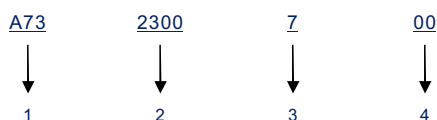
| Part Number | | | | Rated Current | Ampere Code | Breaking Capacity | I ^t (A ² s) | | Dissipation (W) | | Certifications |
|-------------|---------------|-------------|------------|---------------|-------------|-------------------|-----------------------------------|-------|-----------------|--------|----------------|
| Cartridge | Central Mount | Level Mount | PCB Mount | | | | Pre-Arcing | Total | 0.8 In | 1.0 In | UL |
| A731100700 | A731100701 | A731100702 | A731100703 | 1 A | 1100 | 30 kA@1000 VDC | 0.15 | 0.4 | 0.8 | 1.5 | ● |
| A731200700 | A731200701 | A731200702 | A731200703 | 2 A | 1200 | | 1.3 | 3.4 | 0.7 | 1.1 | ● |
| A731300700 | A731300701 | A731300702 | A731300703 | 3 A | 1300 | | 4 | 12 | 0.8 | 1.3 | ● |
| A731400700 | A731400701 | A731400702 | A731400703 | 4 A | 1400 | | 10 | 28 | 1.1 | 1.4 | ● |
| A731500700 | A731500701 | A731500702 | A731500703 | 5 A | 1500 | | 19 | 50 | 1.1 | 1.4 | ● |
| A731600700 | A731600701 | A731600702 | A731600703 | 6 A | 1600 | | 32 | 93 | 1.2 | 1.8 | ● |
| A731800700 | A731800701 | A731800702 | A731800703 | 8 A | 1800 | | 85 | 205 | 1.2 | 2.2 | ● |
| A732100700 | A732100701 | A732100702 | A732100703 | 10 A | 2100 | | 30 | 70 | 1.3 | 2.3 | ● |
| A732120700 | A732120701 | A732120702 | A732120703 | 12 A | 2120 | | 98 | 150 | 1.5 | 2.8 | ● |
| A732150700 | A732150701 | A732150702 | A732150703 | 15 A | 2150 | | 149 | 230 | 1.8 | 3.0 | ● |
| A732200700 | A732200701 | A732200702 | A732200703 | 20 A | 2200 | | 229 | 330 | 2.4 | 3.6 | ● |
| A732250700 | A732250701 | A732250702 | A732250703 | 25 A | 2250 | | 411 | 500 | 2.6 | 4.1 | ● |
| A732300700 | A732300701 | A732300702 | A732300703 | 30 A | 2300 | | 1200 | 2500 | 4.3 | 5.7 | ● |

Note: (1) Typical pre-arcing I^t measured at 10*In current.

TIME VS CURRENT CHARACTERISTIC

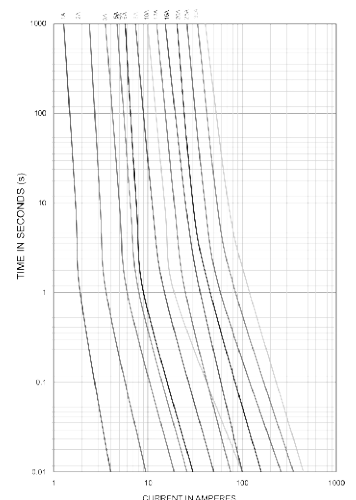
| Rated Current | 100 % | 135 % | 200 % |
|---------------|-------|-------|--------|
| 1-30 A | >4 h | <1 h | <4 min |

PART NUMBER SYSTEM



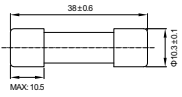
- 1 Product Series A73
 2 Ampere Code 30 A (see Ampere code column of electrical specifications)
 3 Rated Voltage 7: 1000 VDC
 4 Supplementary Code 00: Cartridge; 01: Central Mount; 02: Level Mount; 03: PCB Mount

TIME CURRENT CURVE

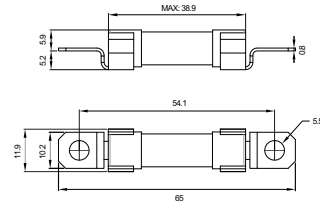


DIMENSIONS (mm)

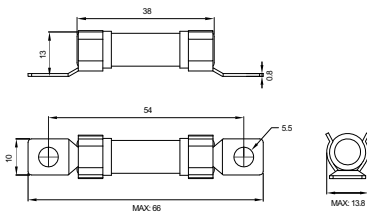
A73xxx700



A73xxx701



A73xxx702



A73xxx703

