

HIKVISION®

Hikvision Solutions for Education

Ensuring a Safer and Smarter
Learning Environment

olutions by Industry

Is your security system keeping up to campus challenges? Do your teaching modes meet student needs?

In this ever-changing era of education, educational institutions often find themselves striving to tackle issues that include the following:



Comprehensive Security

- Eliminate blind spots in video security and alarm systems
- Identify unexpected emergencies and take prompt actions



Efficient Management

- Centralize separate systems into a single platform



Engaging Learning Environments

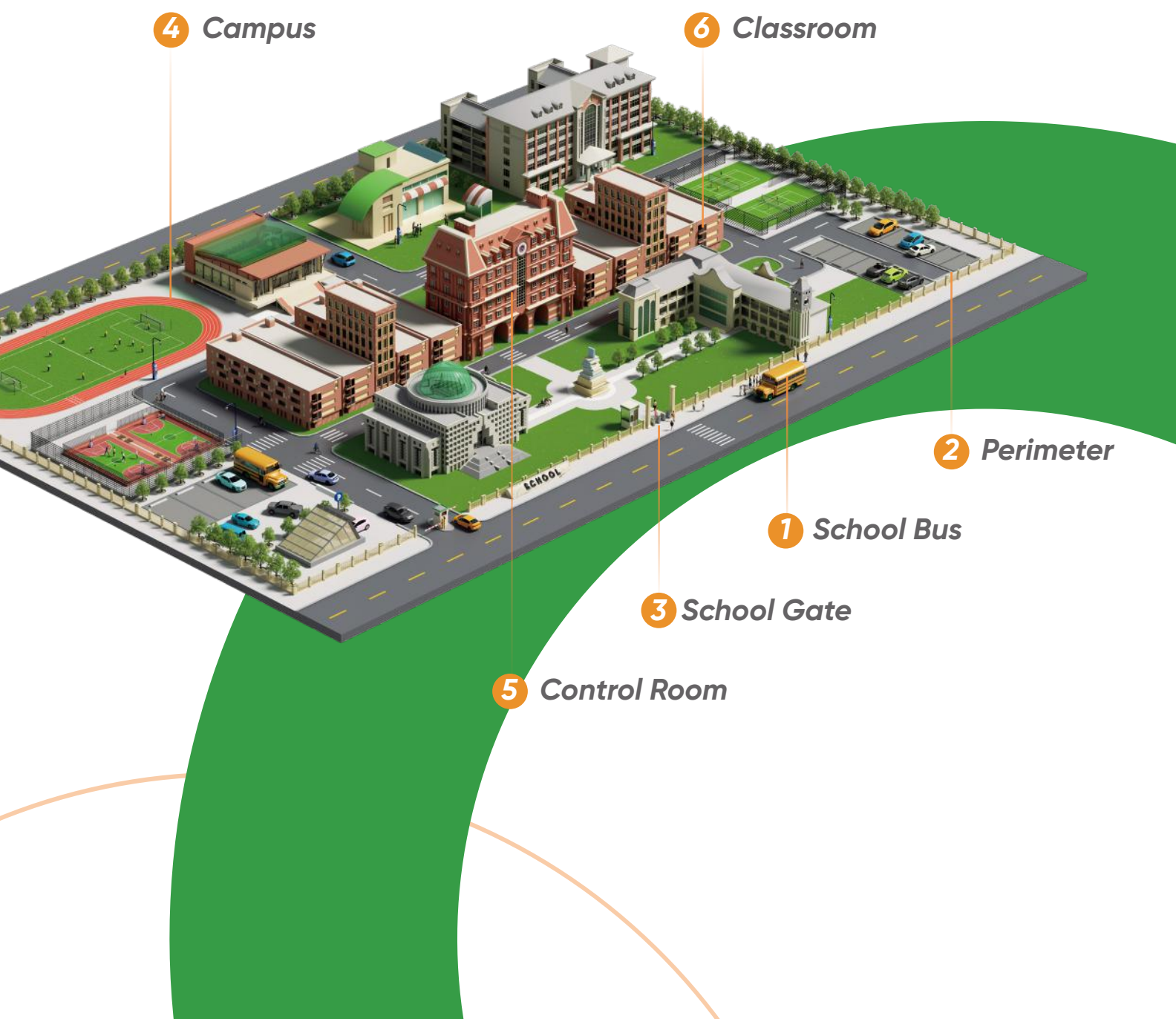
- Meet the learning needs for both in-person and remote students
- Improve classroom interactivity for an enriching learning experience

That's where Hikvision's education solution comes in.



Hikvision helps you build a safer and smarter environment on and off-campus, both now and in the future.

With advanced AIoT technologies and devices, Hikvision provides a comprehensive education solution that meets the evolving needs of your campus, students, and faculty.

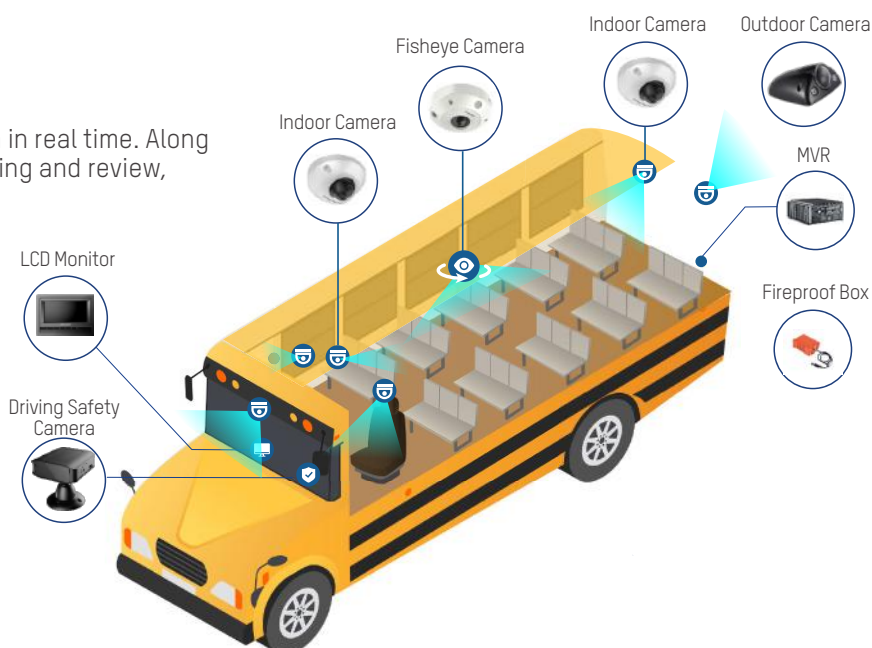




01/School Bus

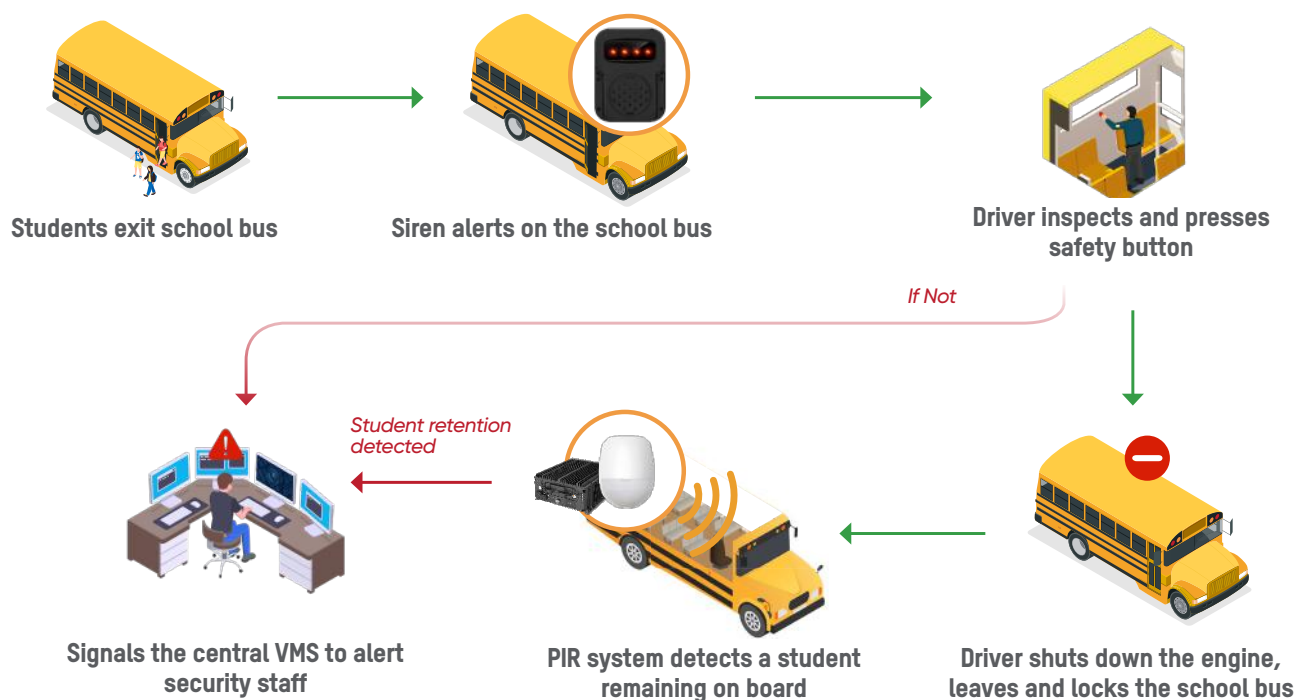
Safe Journey

A live map is offered to see the bus's location in real time. Along with high-definition video for instant monitoring and review, Driver Status Monitor (DSM) Camera can automatically detect driving anomalies and alert the operation center for prompt response.



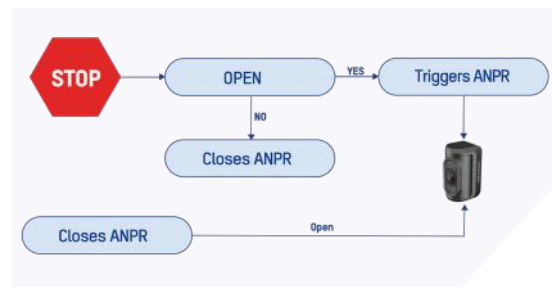
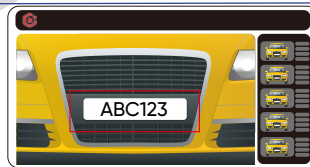
On-board Student Detection

A child left on the school bus, especially during high daytime temperatures, can be at significant risk. Hikvision's PIR Sensor provides a reliable and easy way to confirm if a student is present on the bus.



Stop Arm Violation Detection

Drivers are required by law to yield to school buses. When a school bus driver extends the stop sign arm to drop off or pick up pupils, nearby drivers must stop. But many drivers prefer to continue on as swiftly as they can, without pause. In order to safeguard students, Hikvision's mobile ANPR camera can assist with detecting and recording vehicle details for evidence collection and follow-up.



Cameras with built-in ANPR algorithm capture vehicles passing a school bus when the stop arm is extended.

02/Perimeter

Have confidence knowing your campus perimeters are always protected.

Hikvision's AcuSense technology accurately detects potential risks with person and vehicle classification. Moreover, Cameras with Live Guard feature flashing lights and pre-recorded auditory warnings to deter potential trespassers immediately.



03/School Gate



Gate Security

Student Pick-up Area

Personal Access Control

Vehicle Entrance & Exit

SCHOOL

Security Inspection

To ensure campus safety, Hikvision helps detect threats using X-ray with Raytina Algorithm Engine and AI accuracy. It can effectively identify over 35 types of prohibited items.



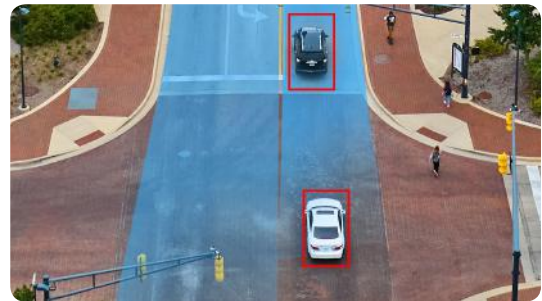
Vehicle Management

Hikvision offers flexible strategies for various types of vehicles such as buses, parents' vehicles, maintenance vehicles, and more.



Entrance & exit management

Hikvision's parking lot management system and radar-triggered capture cameras can be effectively deployed at school gates, providing quick egress for internal vehicles and manual operation for external vehicles.



Violation detection

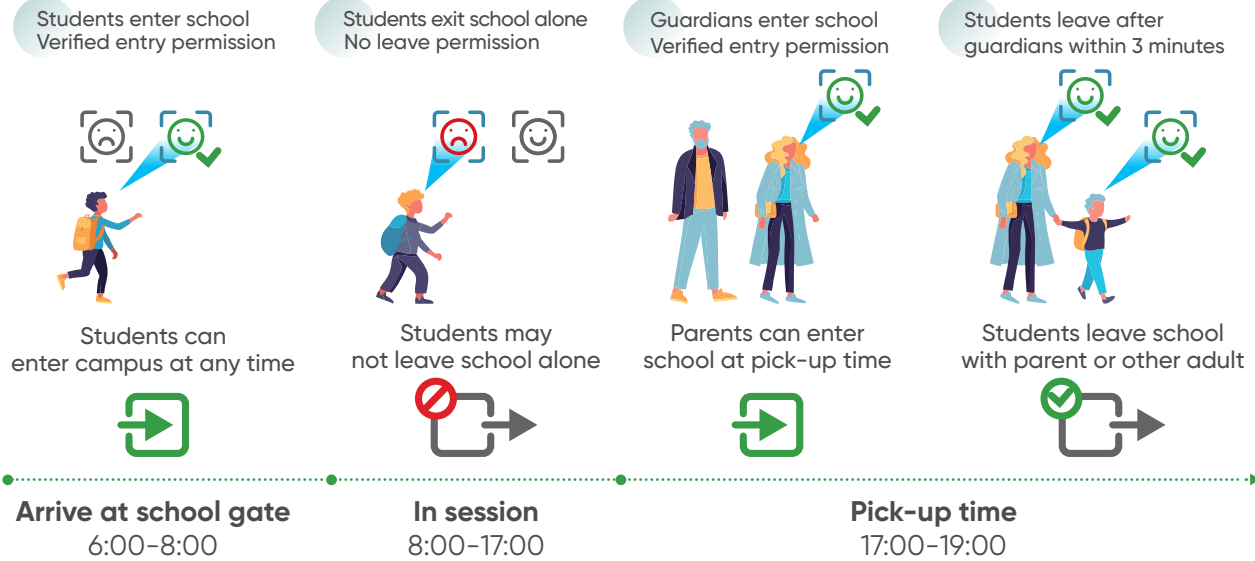
Vehicle checkpoints deployed on arterial roads can detect unregistered vehicles or driving violations, and trigger alarms for prompt response by security guards.

Student Pick-Up

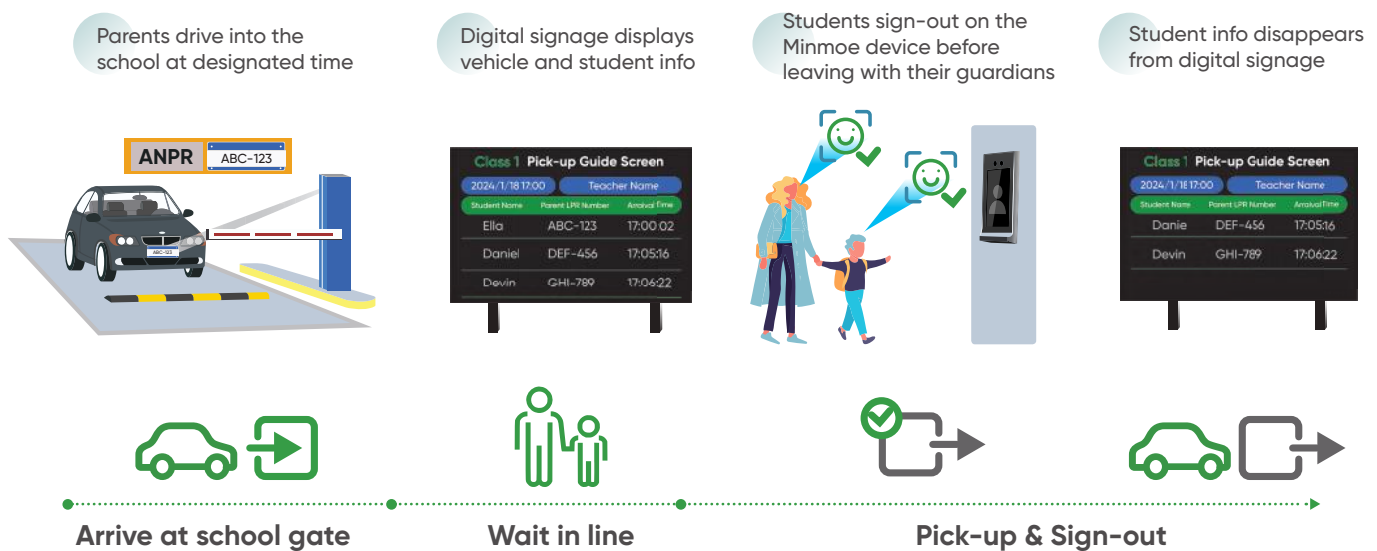
During the start and end of the school day, student pick-up and drop-off can present challenges for both guardians and school staff. With Hikvision's access control systems, the process is simplified and secured.



On-Foot Pick-Up Process



Car Pick-Up Process





04/Campus





Emergency Calling

In case of emergencies such as fire or potential trespassers, students and staff can quickly run to the station and call the Control Center for help.



AR Monitoring

Operators gain awareness of alarm locations and access to various camera live feeds. Security staff can perform multiple functions simultaneously. The big pictures and details can be seen on a single screen.

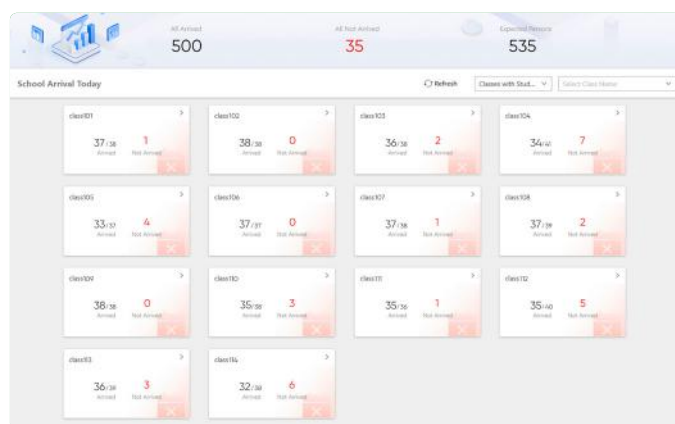
-  Effortless event management
-  Quickly find objects using a computer mouse
-  Switch scenarios with ease
-  Create shortcuts via tags for multiple resources





Daily Arrival Attendance

Say goodbye to the limitations of traditional methods, such as relying solely on face recognition terminals at entry gates. Up-to-date attendance information can be accessible throughout all Hikvision's systems. With this feature, educational institutions can trust in the accuracy and reliability of their attendance records



*The attendance system records the first attendance data of each day as the final attendance result.

**Lobby
or school gate**
Face Recognition Devices



Lab or buildings
Access Control Devices



Classroom
Class Attendance Devices



Information Release

Information needs vary on campus. Hikvision's Digital Signage in common areas can help effectively communicate with all students, and be managed in a unified manner. Potential uses includes:

- Digital menus
- Event information and promotions
- Booking schedules to lecture halls
- Urgent notifications

Furthermore, Hikvision's versatile devices display information in various formats, like picture, audio, and video.



05/Control Room

Dedicated Education Dashboards

Visualized data display aids smarter decision making

- Real-time security status and alarms, facilitating prompt actions when necessary
- Centralized data management from multiple devices and sensors improves understanding of vital security information
- Diversified data and reports enhance management efficiency



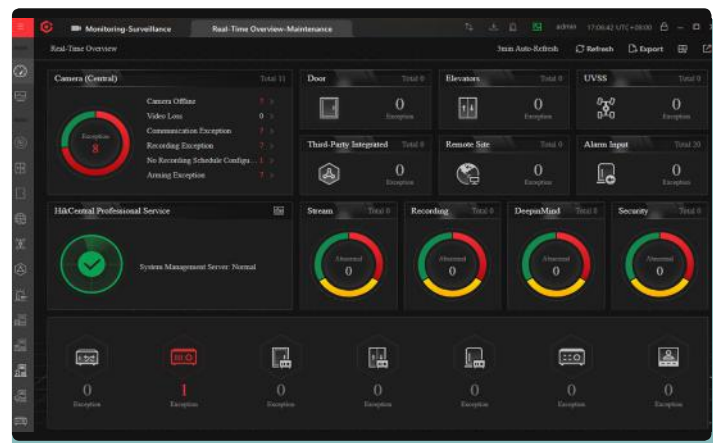
System Maintenance

Quick system status overview

- Visualized diagram, reports and network topology
- Real-time and historical statistics accessible

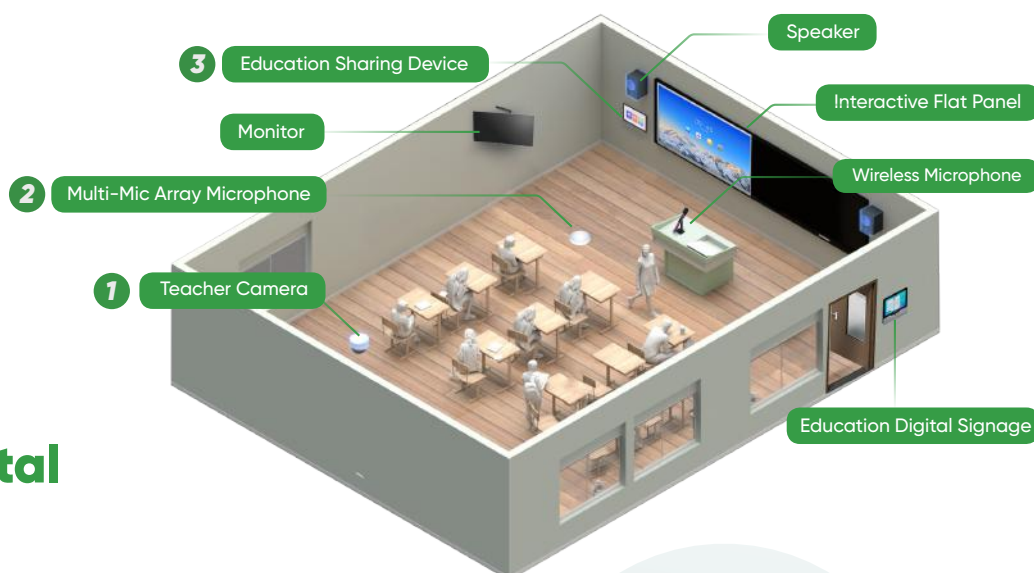
Easier troubleshooting

- Color indicators swiftly identify error nodes
- Network topology and device troubleshooting guides expedite issue resolution and eliminate common errors



06/ Classroom

Information Sharing with Education Digital Signage



The all-in-one Education Digital Signage offers a comprehensive solution with six display modes, including information display and urgent notification, catering to various needs.

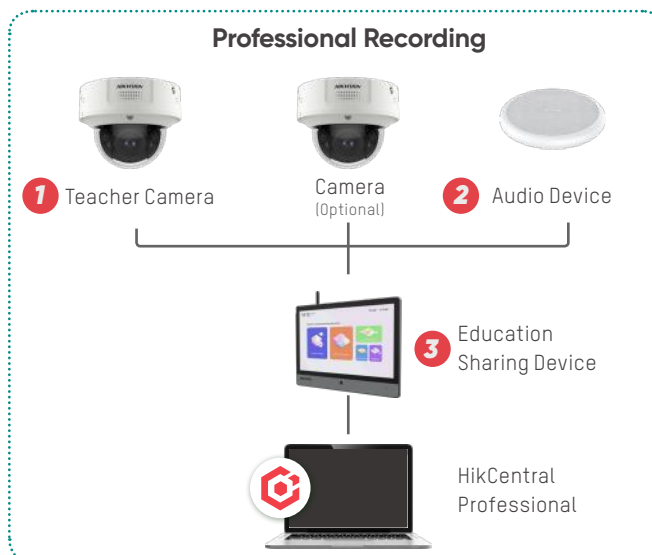
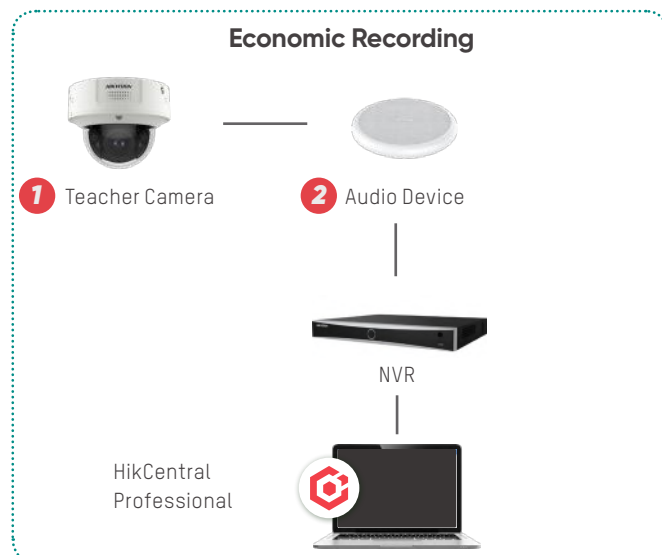
- Easily set up at classroom entrances and library gates
- Quick and widespread distribution of essential school information
- Record attendance by using face recognition or ID card, reducing the need for manual checks



Course Recording

Based on the class schedule, a camera will automatically start recording during the class, or the teacher can manually initiate it via the Education Sharing Device. All videos will be uploaded to the HikCentral Professional platform for review and reinforcement.

Professional cameras capture multi-perspective videos, providing an immersive viewing experience that improves the learning journey.



Distance Learning

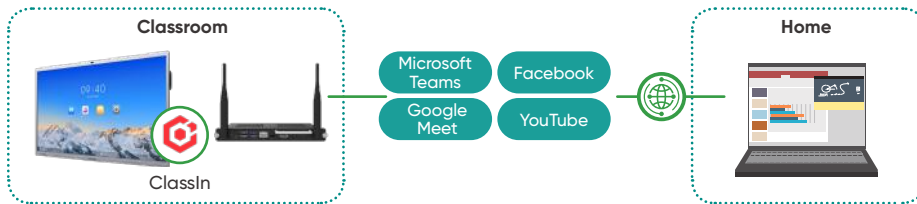
Take education beyond the classroom with Hikvision's advanced AI technologies and digital teaching tools. These innovative virtual classrooms bridge the gap between teaching and learning.

Remote learning

For students at home, Hikvision offers a remote learning method by leveraging professional, AI-enabled teacher camera and lightweight ClassIn software. With automatic panoramic and close-up view switching, students can stay fully engaged from the comfort of their home.



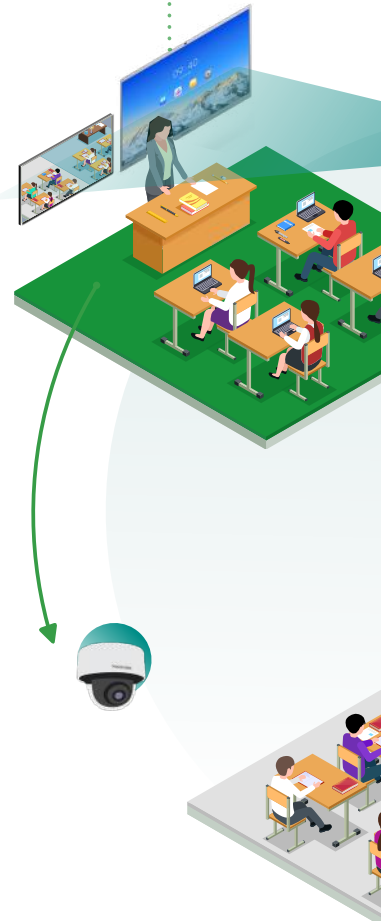
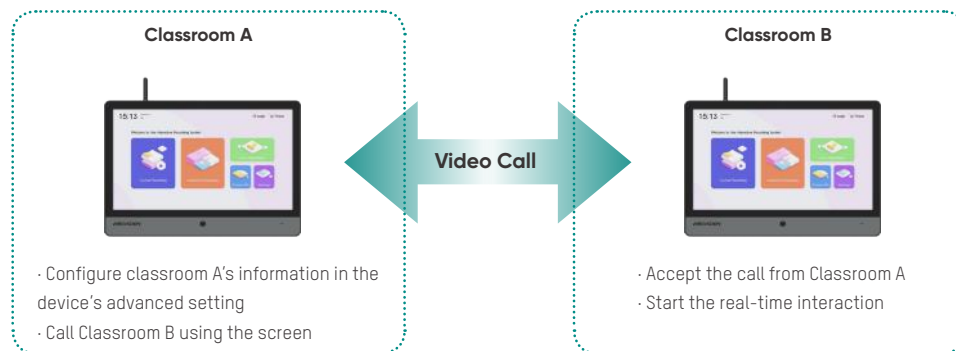
Students at Home



Classroom-to-classroom interaction

Connect students in remote classrooms with high-quality educational content while keeping a pulse on their feedback for optimal engagement.

The Education Sharing Device facilitates real-time video and audio sharing, enhancing collaborative learning experiences across classrooms. Students and teachers from different classrooms can view each other's classroom footage and engage in live voice communication.



Video-based Class Inspection

Video recordings can be scheduled to align with class timetables, allowing school administrators or staff to easily view real-time video feeds from their computer without disrupting the class.

Inspection logs are recorded automatically, which contributes to the improvement of teaching quality.



Advanced collaboration with Interactive Flat Panel

Take your digital teaching experience to new heights with Hikvision's Interactive Flat Panel.

Designed with excellence in mind, it offers great writing experience and a wide range of teaching tools. Both teachers and students enjoy a dynamic environment.

Plus, it can seamlessly integrate with multiple third-party software, adapting to changeable teaching environments and regional requirements.



Product Highlights

Hikvision offers smart products tailored for educational institutes, enhancing safety and digital infrastructure from campuses to classrooms.

TandemVu PTZ Camera

Big picture and details in one view

TandemVu PTZ Camera combines multiple lenses into one unit, offering both wide-area coverage and detailed close-ups with high image quality. This integration ensures stable and enhanced safety management for schools.

- ✓ Public Areas / Playground
- ✓ School Gate / Premier

ColorVu
Technology

DarkFighter

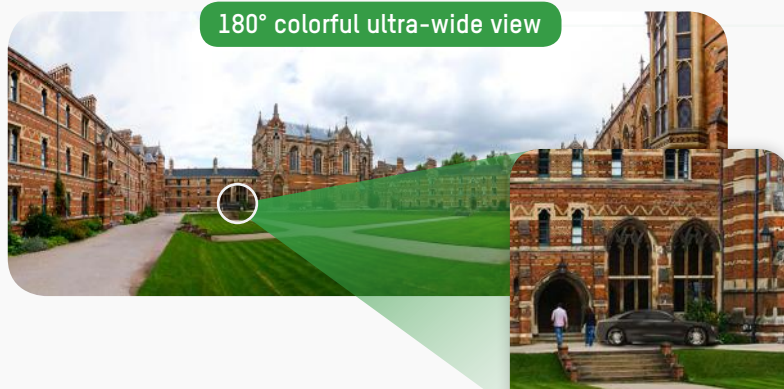


Vibrant images & clear details

TandemVu technology enables security teams to monitor expansive areas while zooming in on specific incidents, delivering clear and colorful images around the clock.

180° seamless panorama

Hikvision's innovative panoramic stitching technology creates seamless, natural images, enabling protection for campuses with no blind spots.



180° colorful ultra-wide view

Instant target tracking with details



DS-2SF8C442MXG-ELW/26(F0)

All-in-one TandemVu design

Bullet , PTZ, Strobe light alarm, Audio alarm

Bullet Lens

- 4 MP (3840 × 1080)
- 0.0005 Lux @ F1.0
- 2.8 mm fixed lens
- 30 m white light range

PTZ Lens

- 4 MP resolution
- 0.0005 Lux @ F1.2
- Up to 42× optical zoom
- 16× digital zoom
- 300 m IR light range
- Strobe light and audio alarm

Easy maintenance

Manage multiple lenses with a single IP address

High image quality

High-definition color imaging, even in low light conditions

DeepinView Dome Camera (Teacher Camera)

AI-enabled camera for intelligent teaching

It's a camera for both security management and immersive course recording, with smooth switching among various views. Even remote students can fully engage in the immersing learning environment.



Three views in one camera

Students will get more of a first-hand experience with the smooth switching among views of the teacher, board, and classroom, all in excellent image quality powered by AI algorithms.



Close-up View

Panoramic View



Effortless live streaming

With this camera and ClassIn software, Hikvision offers a smart solution for sharing lessons with remote students via conference software and live broadcast platforms.



iDS-2CD7186G0-IZS/TEA(2.8-12mm)(D)(EDU)

iDS-2CD7186G0-IZS/TEA(8-32mm)(D)(EDU)

High resolution & image quality

4 and 8 MP options available (2.8 to 12 mm, and 8 to 32 mm)

Viewing & Display

- Up to 20 channels, simultaneous live viewing
- Customizable podium, screen, and blackboard areas
- Smooth view-switching without noise

Advanced following & Installation

- Automatic teacher following with embedded deep learning algorithms
- AP0E for easy installation

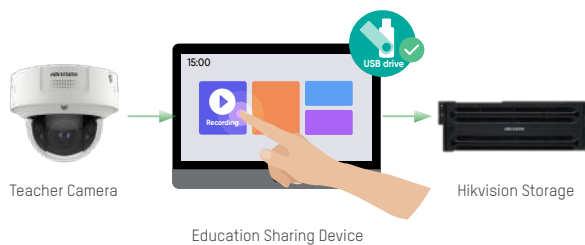
Versatile application

One camera for both security and smart classroom applications

Education Sharing Device

Make course recording easier

Say goodbye to traditional complex operations with Hikvision Education Sharing Device. Quickly start recording with one click and retain important educational resources.



Simplified course recording

Simplified installation and operation allow teachers to log in using face recognition and easily start, pause, and end recordings without the need for extra cameras or software.

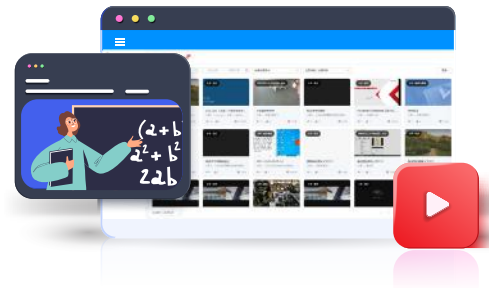


Multi-classroom learning

The Education Sharing Device enables real-time interaction between multiple classrooms, enhance the sharing of teaching and learning resources among different schools and students

Building a course video library

all recorded videos and educational materials can be backed up to central storage, creating a valuable, long-term video library for teachers and students.



DS-9604LNI-V/B12(STD)

Storage & Export

- 1 TB HDD in-built for local recording
- Can be exported to an inserted USB flash disk

User interaction

- Touch screen for easy operation
- Quick log in via face recognition

Streaming & Viewing capabilities

- RTMP stream
- Movie model, PIP model and multi-screen model
- Live view and playback

Audio & Communication

- Acoustic echo cancellation, howling suppression and automatic gain control
- Multi-classroom interaction

Array Microphone

Clear sound with high fidelity

Hikvision's array microphone captures audio effectively in challenging acoustic environments, ensuring that remote students can hear the teacher clearly from nearly any location in the classroom.



Solution 1



Solution 2

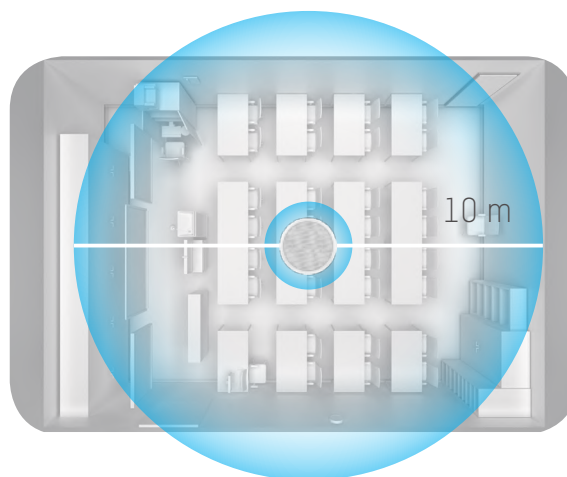


Clear lecture recording

It captures lecture from an up to 10-meter distance, automatically reducing environmental noise for clear audio recording.

Easy Installation

Compact in size, the microphone can be easily mounted on top of the classroom, simplifying installation.



DS-UAC-M1P(HIK STD)/EDU

Microphone and audio pickup

- 32-mic array microphone
- 10 m pickup distance

Noise reduction and audio quality

- Intelligent noise reduction
- Suppresses echo and squeal effectively
- Smart noise reduction, eliminating environmental noise

Audio sampling and interfaces

- 32 kHz audio sampling rate for HD sound
- Multiple interfaces: line in, line out, PoE

Installation

- PoE for easy installation

Education Digital Signage

Cost-effective device for smart classrooms

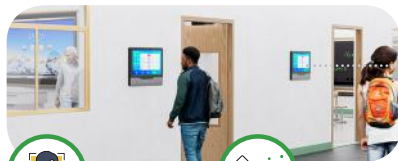
The education digital signage is an all-in-one device offering intelligent applications for educational institutions, supporting public information display and attendance checking seamlessly.



Classroom



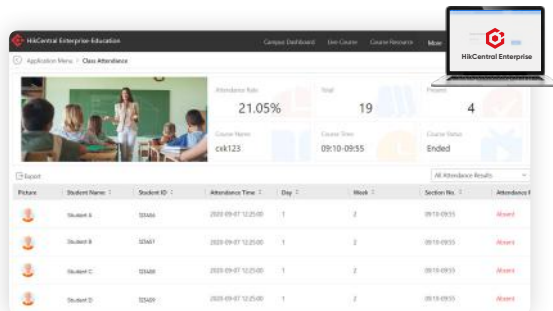
Library



Facial Recognition



Card Authentication



Efficient class attendance recording

Students can check attendance instantly with face recognition or school ID cards, reducing manual effort. All attendance data is managed on a single platform.

Diverse information release

Its compact size is ideal for information displays in classrooms, libraries, and more. It allows quick updates on campus information, class schedules, activities, and urgent notifications.



DS-D6122TH-D/C

Embedded Android system

- Android 12
- 2GB RAM & 16GB EMMC

Indoor & Outdoor usage

- Size: 21.5 inches
- Luminance: 600cd/m², Waterproof: IPX3
- In-built 13.56MHz RFID module

Operational modes

Attendance, information release, and class & examination modes available

Integration

Supports third-party applications relying on Android, such as meeting room booking systems

Attendance & Verification

- Face database: 50,000 faces
- Face verification time: ≤ 0.5 s/person
- Card / Face recognition

Interactive Flat Panel Display

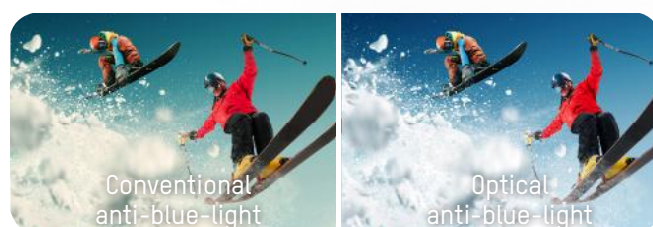
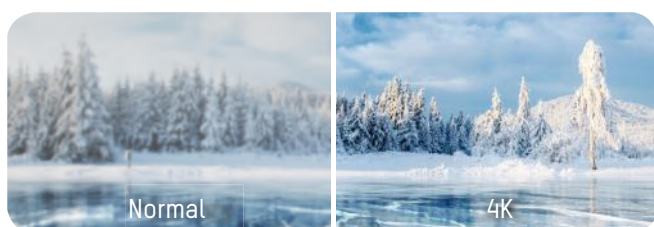
Advanced collaboration to a new level

Hikvision Interactive Flat Panel displays take the digital teaching experience to an entirely new level, offering high-definition imaging, user-friendly functions, and a seamless writing experience for enhanced teacher-student interaction.



Outstanding imaging

Featuring world-class panel technology, Hikvision's display provides superior visuals and improved eye protection.



Digital whiteboard

The smart whiteboard functionality includes handwriting recognition and various tools for quick, creative writing and drawing.
















Easy sharing, better interaction

Support for sharing various educational materials (PPT, Word, etc.) via Airplay, NFC, and simultaneous projection of up to 9 devices facilitates group discussions.

Dual-system switchover

Equipped with Android and supporting Windows via OPS, it allows for a wide range of third-party educational applications to enrich teaching.



 <p>DS-D5C65RB/B DS-D5C75RB/B DS-D5C86RB/B</p> <p>EDLA Certified Android 13</p>	<p>Performance and system</p> <ul style="list-style-type: none"> 8-core CPU, 8GB RAM + 128GB ROM Android 13.0 <p>Connectivity and Network Options</p> <ul style="list-style-type: none"> Cable + Wi-Fi + NFC + DLNA <p>Audio & Visual features</p> <ul style="list-style-type: none"> Built-in 2 x 20 W + 25 W loudspeakers 4K@60 Hz UI (OS 3.0) 48 MP camera and 8 microphone-array with AI functions Display 4K@60Hz with optical anti-blue light [TUV Certification] <p>Hikvision's ultra series Interactive Flat Panels are EDLA-certified and come with a pre-installed genuine Google Suite.</p> <div>             </div>	<p>Support & Design</p> <ul style="list-style-type: none"> Support GMS User-friendly, unobtrusive design prevents injuries <p>Projection</p> <p>Projection via WonderCast app, Airplay, NFC and dongle</p>
----------------------------------------------------------------------------------------------------------------------------------------------------------------------------	-------------------------------------------------------------------------------------------------------------------------------------------------------------------------------------------------------------------------------------------------------------------------------------------------------------------------------------------------------------------------------------------------------------------------------------------------------------------------------------------------------------------------------------------------------------------------------------------------------------------------------------------------------------------------------------------------------------------------------------------------------------------------------------------------------------------------------------------------------------------------------------------------------------------------------------------------------------------------------------------------------------------------------------------------------------------------------------------------------------------------------------------------------------------------------------------------------------------------------------------------------------------------------------------------------------------------------------------------------------------------------------------------------------------------------------------------------------------------------------------------------------------------------------------------------------------------------------------------------------------------------------------------------------------------------------------------------------------------------------------------------------------------------------------------	------------------------------------------------------------------------------------------------------------------------------------------------------------------------------------------------------------------------------------------------------

HikCentral Professional Education (HCP V2.5.500)

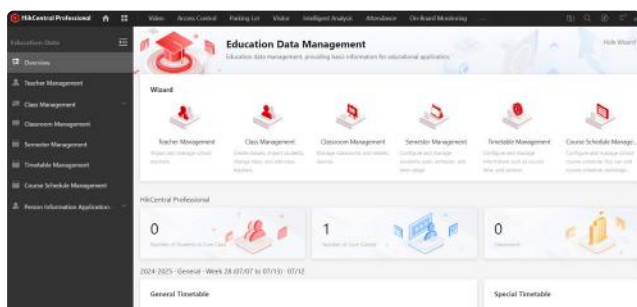
Unified management via the platform

The platform is designed for efficient campus and classroom management, simplifying administrative tasks and enhancing the educational experience with user-friendly features.

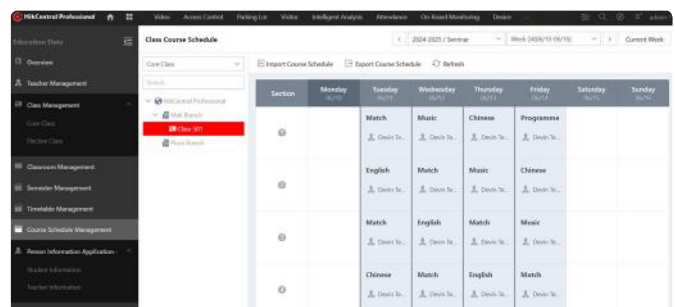
Professional education data management

Efficiently manage all aspects of educational data, including:

- **Teachers & Students:** Monitor and support both teacher and student needs
- **Timetable & Course Schedule:** Plan and organize class schedules effectively



Education Data Management

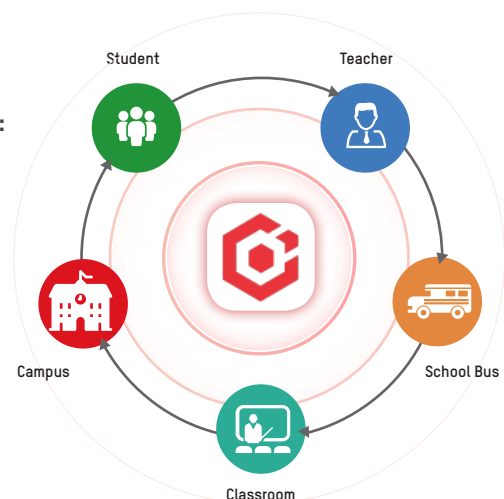


Course Scheduling

Safe Campus and Student Management

Ensure the students and staff safety with robust management tools:

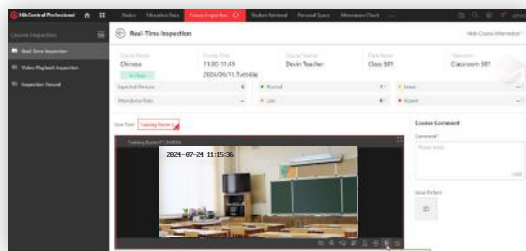
- **Person & Vehicle Management:** Track and control campus access for individuals and vehicles
- **Student Attendance:** Record attendance to ensure accountability and safety



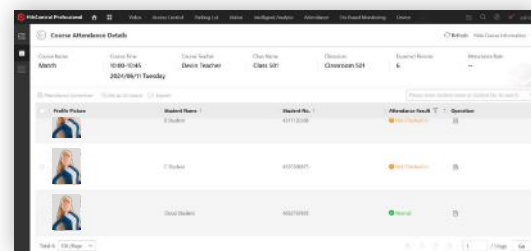
Smart Classroom Management

Enhance classroom interactivity and administration:

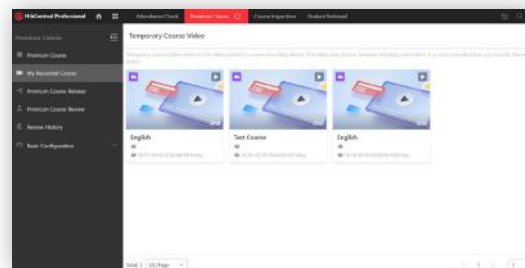
- **Interactive Flat Panel:** Integrate with touch-sensitive display panels for interactive lessons
- **Course Recording:** Record and upload class videos to the platform
- **Class Attendance:** Track attendance seamlessly with automated systems



Course Inspection



Class Attendance



Course Recording



Hikvision Solutions for Education

Ensuring a Safer and Smarter
Learning Environment



www.hikvision.com
support@hikvision.com

HIKVISION®