

## Winchelsea Girl Guides

Recruiting new girls to join the unit now

Girls aged 5-15 years welcome!



Would your daughter like to make new friends and take part in fun and exciting activities? Girl Guides helps build confidence, determination, respect for others, citizenship, self- respect, and self-awareness. Through challenging fun activities, including craft, badges, outdoor skills, fitness, camping,etc.

Take advantage of a 3 week free trial - no cost, no obligation.

If interested, call leaders Yvonne Orchard ph 0448 672 630  
or Lily Del Rennie ph 0428 936 441

The Winchelsea Unit meets at  
**St John's Catholic Church Hall, Harding St Winchelsea**  
**4.30-6.00 pm on Monday evenings**



# CONTENTS

## 3 February 2026

COVER		
Winchelsea Girl Guides		
FEATURES		
Community Satisfaction Survey	Surf Coast Shire	2
Parkrun 100#	Neil McInnes	3
Scout leader Marie McPadden OAM	Tony Phelps	3
Nominate a Local Legend	Surf Coast Shire	4
New Committee elected	Growing Winchelsea	5
What's happening at Moriac CN	Kim Rowe	21
GARDENING AND COOKING		
Garlic	Julia Holohan	6
Cooks Corner	Alice Cloake	7
Watering a garden	Peter Groves	17
Save water and earn a rebate	Barwon Water	17
THE ENVIRONMENT		
Support after emergencies	Jumpleads	12
Wurdale Brigade fire support	Stewart Mathison	12
Climate pollution driving heat	Climate Council	12
Winchelsea CFA acknowledgement	Kaylene Stocks	13
Here's what matters in 2026	Jumpleads	13
Lorne Bushfire Place of Last Resort	Surf Coast Shire	13
The Climate Report	Judy Cameron	14
Climate stress hitting homeowners	Climate Council	15
Friends of the Barwon	Jane Bartier	15
THE ARTS		
ArtsRural - How I became a model	Zinaida Campion	9
HISTORY & CULTURE		
Winchelsea Presbyterian Church	M. O'Dhonnabháin	11
CHURCHES		
Church Services		20
Thought of the Week	John Bader	20
FARMING		
Farmer of the Year awards	The Weekly Times	21
HEALTH & WELL BEING		
Ross River Virus in Anglesea	Surf Coast Shire	23
What to do if you see a snake	Benny	23
COMMUNITY INFORMATION		
Community Noticeboard		16
What's On February 2026		18
Business Phone Directory		24
Services & Activities in Winchelsea		25
SPORTS & EXERCISE		
Winchelsea Golf Club	Rachel Boddington	29
Winchelsea Tennis Club	Fletcher Allen	29
Winchelsea Bowls Club	Julie Johnson	31
Blues News	Janet Fletcher	33
Trebeck Parkrun	Neil McInnes	35

## You may be contacted for Community Satisfaction Survey

### Surf Coast Shire

Surf Coast Shire residents and ratepayers may be contacted in coming weeks as part of the 2026 Local Government Community Satisfaction Survey. Between the start of February and the end of March 600 people will receive a call to their landline or mobile from an independent research agency, asking for perceptions of Council's performance across a range of service areas.

This year there will be an option to take part online, also managed by an independent research agency.

The annual survey is commissioned by the state government, with all local governments in Victoria able to participate. Mayor Libby Stapleton said Council's results would be benchmarked against state-wide results and other large rural councils. "If you're contacted and invited to participate, we encourage you to take part and give your opinions of Council's performance," Mayor Stapleton said. "The results will give us a good sense of how the community feels we're going, what's working well and what can be improved."

Survey themes include:

- overall council direction
- local infrastructure, facilities and services
- community consultation and engagement
- decisions made in the interest of the community
- customer service

Responses are kept confidential, with only the overall results shared with Council.

### Community Satisfaction Survey **On now**



**You may be contacted by an independent researcher during February/March as part of the 2026 Local Government Community Satisfaction Survey.**

The annual survey, commissioned by the state government, will ask for your perceptions of Council's performance.

Interviews are via phone and online. You'll be asked for basic demographic information, but not personal details such as name and address.

For more information please call 5261 0600.



Researchers will ask for basic demographic information such as age, gender and location, but will never ask for personal details such as name, address or income.

They will seek responses from a representative cross section of the community. "If you're advised after providing your age or location that the quota for your demographic has been met, you are welcome to contact Council directly to provide feedback if you would like to," Mayor Stapleton said.

If you have questions about the survey phone 5261 0600 or query online via [surfcoast.vic.gov.au/request](http://surfcoast.vic.gov.au/request).





# parkrun 100



50 participants and nine volunteers celebrated the 100th event of Trebeck Reserve parkrun this week

Black being the colour of 100 milestone T-shirts, it was logical to have a black theme for our celebration.

So there were Black balloons, Black jelly beans, Black grapes, Black lollies, Black Pepsi, Black clothing and music by the Black Sorrows.

Congratulations to Donna Loone who completed her 100th parkrun, dressed in Black.

If you wish to join us any Saturday morning as a walker, runner or volunteer please complete the simple online registration at [parkrun.com.au/register](http://parkrun.com.au/register), this is free, only needs to be done once and can be used at any of the 5,000 plus parkrun events worldwide.

To volunteer please email to [trebeckreserve@parkrun.com](mailto:trebeckreserve@parkrun.com)



## Local Scout Leader awarded OAM for services to Scouting

Tony Phelps

A huge "CONGRATULATIONS" to Marie McPadden for her award of an Order of Australia Medal! Very well deserved, Marie has been a community stalwart for decades, with over 30 years as a Scout leader (including Winchelsea & Modewarre), plus active at pet rescuer GAWS and cat desexing charity Project Meow Geelong.

**Government House CANBERRA ACT**

**26 January 2026**

**Australia Day Honours List 2026**

***Awarded the Medal of the Order of Australia***



**Mrs Marie Elin MCPADDEN**

*Wurdiboluc VIC 3241*

For service to the community through a range of roles.



YOU ARE INVITED TO

## WINCHELSEA COMMUNITY DINNERS

**LAST SATURDAY OF EACH MONTH**

February 28th	July 25th
March 28th	August 29th
April 25th	September 26th
May 30th	October 24th
June 27th	November 28th

**6.30PM HALL ON CORNER OF  
MERCER & HARDING STREETS**

PRODUCE SWAP TABLE  
CHILDRENS ACTIVITIES

PLEASE BRING FOOD TO SHARE  
IF YOU ARE ABLE  
GOLD COIN DONATION AT DOOR  
MORE INFO- JESS 0409536752









**WINCHELSEA LIONS CLUB**  
In conjunction with  
*Winchelsea Primary School*

**Are holding a**  
**FREE PICNIC**

**At Winchelsea Primary School Grounds**  
**SATURDAY 28<sup>TH</sup> FEBRUARY 2026**  
**12 - 3PM**

For all children under 12 who reside in 3241  
Must be accompanied by a responsible adult  
This is a free picnic but you must have a ticket to receive your food

**Enquiries: Alan 0476 475 422**

**CHUCK WAGON** **COFFEE VAN**

FOR TICKET BOOKINGS go to – [www.trybooking.com/DIAZC](http://www.trybooking.com/DIAZC)



Have you thought about joining the local Movie Club?

Winchelsea Movie Club enters its ninth year of bringing affordable, entertaining movies monthly to the Globe theatre.

**Membership is essential -**

10 screenings annually - \$70 Conc \$65  
5 screenings Autumn /Spring seasons  
- \$40 Conc \$35

**WHEN -**

Movies will be shown third Thursday  
of each month (except July) at 7.30  
Come early.

**WHERE -**

The Globe Theatre  
17-19 Willis Street Winchelsea  
Opp Winchelsea Tavern (Top Pub)

**Movie List for 2026**

19.2.2026 The Castle  
19.3.2026 Tina  
16.4.2026 One Life  
21.5.2026 Roofman  
18.6.2026 Gifted Hands  
BREAK  
20.8.2026 Rachael's Farm  
17.9.2026 The Book Thief  
15.10.2026 Mr Burton  
19.11.2026 My Favorite Cake  
10.12.26 Thelma

Membership can be paid by CASH on the first night February 19<sup>th</sup> or by direct debit to bank account.

Enquiries re bank account details to email - [movies@growingwinchelsea.com](mailto:movies@growingwinchelsea.com)  
Jenny 0409672054 Sue 0413487915

Further information about the Movie Club – [www.growingwinchelsea.com](http://www.growingwinchelsea.com)



**VOLUNTEER, LEADER, CHANGE MAKER, INNOVATOR**

# Nominate a Local Legend 2026

**Nominations open 1 February**

Council is calling for nominations for the 2026 Surf Coast Shire Local Legends Awards, seeking to recognise and celebrate unsung heroes making positive differences in our community.

Local Legends contribute around us every day, helping our community to thrive with their selfless and inspiring contributions.

The 2026 awards introduce four categories for nominations:

- Community Commitment and Community Impact awards for individuals, and
- Community Inclusion and Volunteer Excellence awards for groups.

The 2026 Local Legends will be named, and all nominees recognised, during a Council ceremony in May celebrating National Volunteer Week.

Find more category information and nominate via

[surfcoast.vic.gov.au/LocalLegends](http://surfcoast.vic.gov.au/LocalLegends), by phoning **5261 0600** or visiting Council's civic building at 1 Merrijig Drive, Torquay.

**Nominations are open until 15 March.**



## It's time to celebrate our Local Legends

### Surf Coast Shire

It's time to recognise our unsung heroes and community contributors through the Surf Coast Shire Local Legends Awards. The program celebrates individuals and groups making positive differences in our community – whether as volunteers, organisation leaders, change-makers, innovators or more.

Nominations will be open from 1 February to 15 March and Local Legends will be named and celebrated during National Volunteer Week in May.

Surf Coast Shire Councillor Joel Grist encouraged people to help give Local Legends the recognition they deserve.

"I'm sure many of us know these people who make such significant contributions to our community with so little fuss, giving up that precious thing – their own time – for the good of others," Cr Grist said. "They share their energy, skills, passions and inspiration helping to make Surf Coast Shire a better place and help power organisations doing truly meaningful work."

People can make nominations via [surfcoast.vic.gov.au/LocalLegends](http://surfcoast.vic.gov.au/LocalLegends), by phoning 5261 0600 or by visiting Council's civic building at 1 Merrijig Drive, Torquay.





# New Committee. Fresh Approach.

Growing Winchelsea Inc is entering an exciting new chapter, with a new committee stepping in and a renewed focus on connection, conversation, and community led ideas.

## An Open Invitation to Get Involved.

This year marks a deliberate shift in how Growing Winchelsea operates. The new committee is moving toward a more relaxed and welcoming format that prioritises networking, listening, and the sharing of ideas. The aim is simple. To create a space where people feel comfortable turning up, having a conversation, and contributing in ways that suit them, whether that is through big picture thinking, practical suggestions, or simply being part of the discussion.

This refreshed approach comes at a crucial time for Winchelsea. Members of Growing Winchelsea Inc have been actively involved in the Surf Coast Shire Council workshops that are shaping the **Winchelsea Place Plan**. Through an expression of interest process, 29 local community and business members were selected to take part. Together, they have helped shape a shared vision for Winchelsea as it grows toward an expected population of 18,500 people by 2050.

The draft Place Plan sets out what matters most to the Winchelsea community and is guided by seven key principles to support thoughtful and sustainable growth. It also recognises that the success of the plan relies on partnership, with Council and the community sharing responsibility for turning ideas into action.

Looking ahead, the final Place Plan will inform a new Winchelsea Structure Plan in 2026. Growing Winchelsea Inc is committed to working alongside both processes, advocating for local priorities and ensuring community voices continue to be heard as decisions are made about the town's future.

**Now is the perfect time to get involved.**

This is a pivotal and exciting time for Winchelsea. If you would like to be involved, share your ideas and suggestions, make a commitment to shaping Winchelsea's future, or simply

enjoy being part of a proactive and positive community, Growing Winchelsea welcomes your interest and input. **Let us know by sending an email with your interest to:**

[secretary@growingwinchelsea.com](mailto:secretary@growingwinchelsea.com)

Growing Winchelsea Inc will hold its first meeting of the year at the historical Winchelsea Railway Station on **Wednesday 25 February, 6.30pm – 7.30pm.**

Come along and learn about the current planting and seating project as well as future ideas. The meeting will follow the final Place Plan session and will set the direction and tone for the year ahead.

Everyone is welcome. Be comfortable, bring a chair. Come along, meet your community advocacy group, and be part of what comes next.





# Garlic

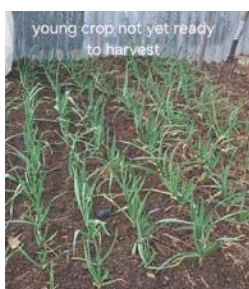
Julia Holohan

We love garlic, growing it and the wonderful flavour it gives our meals.

On the whole it grows well in our garden so long as we follow it's rules. We missed the "right time to harvest it" rule & also nature's extra hot & humid days while it cured didn't help this season. Although we reaped a good size crop we lost quite a few bulbs with moisture causing softening & some rotting bulbs.

We now have our fingers crossed we'll have enough to last a full year. We have surplus left from last year and we can always start using the immature plants like spring onions until the rest of the crop ripens next season.

There's always next season to keep us hopeful.



We usually plant 2 crops of garlic as I always worry we won't have enough and then set about planting a second smaller patch, finding room for this crop that will be in the ground for 6 months can sometimes be difficult!

As a general rule garlic is planted on the shortest day which is mid June, then harvested on the longest day which is mid December. If planting by the moon, bulbs are planted on a waning or shrinking moon.

Soil prep: As far in advance as we can, we will weed the intended plot adding some compost and maybe a little watering in. Then we regularly lightly turn the surface of the soil to help keep it pliant for easier bulb growth.

Plant unpeeled cloves about 5cm deep with the pointy end up.

Once planted, regular weeding, which is usually whenever we pass by, pulling the weeds before they get too big as their root system may disturb the developing bulbs. Keeping the bulb area free helps the bulb develop nicely, also some watering if rainfall is not sufficient, but not too much or you run the risk of rot.

Harvesting, this can sometimes be a bit of a contentious issue between the two of us as we try to get the optimum harvest! They are best harvested when the lower leaves dry off & before the flower stem develops.



Once harvested all the plants are put on a rack, spread out so they can dry off. For our racks we use either our old fire surround, an old gate which has been hung up from the shed roof or the old Guinea pig cage. We leave the plants in an open shed, under cover, on the rack to dry out completely for about a couple of weeks.

Then it's time to take a seat while you neaten them up. Trim the roots, then trim & cut the leaves to desired length unless you want to plait them. Plaiting is not our forte, I'm happy to give it a go each year but usually end up with a hotchpotch of funny looking bunches which doesn't worry me as I proudly hang them inside.

I will not be plaiting them this year as the flower stem is too hard to plait & I feel they may run the risk of more of the bulbs softening. Instead I have peeled them right back so the air can get around the cloves and cut their stalks short, I'll leave them in cane baskets for air circulation. Then cross my fingers this will work!

Being garlic feens, we relish making a garlic pie with our fresh crop, I've included the recipe which I hope is not too hard to understand as I wrote it down quickly while watching it being made.

## GARLIC PIE (this pie is like a quiche)

### Ingredients

- \* 1 sheet of frozen pastry, thawed or your own home made pastry.
- \* 1/4 - 1/2 cup pine kernels, chopped (I cheat and use ground almonds).
- \* 1 - 2 tablespoons grated Parmesan.
- \* 7 or more garlic cloves, crushed.
- \* 3 eggs, beaten with 100- 200ml cream.

### Method

Line a greased 15 - 17cm pie dish with pastry.  
Mix together the first three ingredients & spread on top of pastry.  
Top with egg & cream mixture.  
Bake 40 minutes in a preheated 170° Celsius oven.  
Serve warm or cold.





Alice Cloake

This is a place for passionate foodies. Here we celebrate local produce, seasonal ingredients, simple yet remarkable recipes we've tried, tested and loved.



If you have a recipe you'd like to share, a local product to shout out or a suggestion for an upcoming ingredient of the month - we'd love to hear from you.

Email editor@winchelseastar.org.au.

## February Ingredient of the Month

# Cucumber



How underrated a vegetable (technically, a fruit) is cucumber! Not something we pay much notice to as we add it to salads and cut it up into sticks for dipping. But cucumber is much more than just a sidekick, as I'll aim to prove over the next month as we celebrate it.

Worth noting from a health perspective is that cucumbers contain essential nutrients like Vitamin K, potassium, and magnesium and are remarkably low in calories. So let's lift up cucumbers this month and give them the kudos they deserve for being an important summer ingredient!

## Recipe of the Week Cucumber & Mint Raita

From *Fresh India* by Meera Sodha

Submitted by Alice Cloake

### About the Recipe

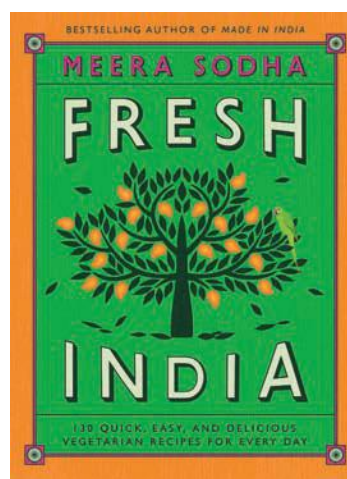
Raita is a popular, chilled Indian condiment and side dish made from yogurt mixed with grated vegetables (commonly cucumber), herbs, and spices. I love Raita so much I could eat it for breakfast (and have, on occasion). Raita is stunning as a companion to curries but also by itself with some papadums. This is a no-fail recipe for making delicious Raita, enjoy it!

**Ingredients** (Serves 4 as a side and can be doubled easily)

- 1 teaspoon cumin seeds (plus extra to serve)
- 200g cucumber (plus extra to serve)
- 250ml Greek yoghurt
- 10g fresh mint leaves, shredded
- ½ teaspoon salt

### Method

1. Place a frying pan over a medium heat and, when hot, add the cumin seeds. Toast the seeds for 3 to 4 minutes, until chocolate coloured, shaking the pan every now and then to ensure they toast evenly. Then lightly grind with a pestle and mortar.
2. Grate the cucumber and place in a sieve. Squeeze out as much water as you can over the sink, and put the cucumber in a bowl.
3. Add the yoghurt, mint leaves, salt and ½ teaspoon of the cumin.
4. Mix together, then grate a little cucumber over the top and sprinkle with a little more cumin before serving.



### About the book

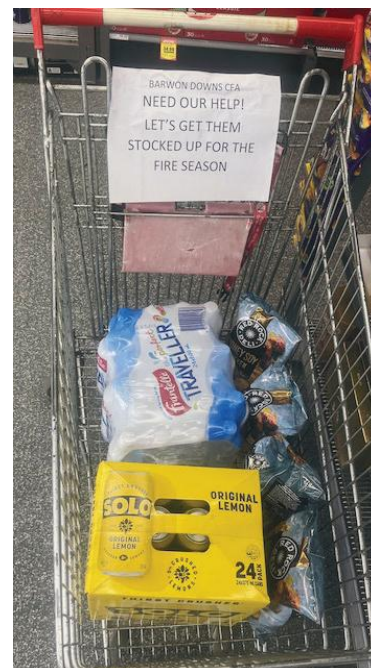
A gift from my sister in law a few years ago, *Fresh India* has played a very important role in my kitchen. As it says on the cover, the recipes really are fresh. Using all vegetarian ingredients, this book offers the novice cook an easy introduction into Indian cuisine with most recipes taking 30-minutes to create. Later in the year I'll introduce you to the cauliflower korma recipe and you won't know yourself, it's that delicious.

## Thank you CFA, thank you IGA!

Would love to extend a word of thanks of course to all CFA members for your tireless work this fire season, but also to our local IGA for allowing the community an opportunity to do a small bit to show our support by offering this donation trolley.

On my drive home from work on Tuesday I was accompanied by seven fire trucks making their way to the Gellibrand fires. I was overcome with wanting to reach out and thank them all for leaving their families to protect their communities, and strangers communities. Stopping into the IGA I noticed the trolley and was relieved at the opportunity to say thanks.

So thank you IGA, for giving us the ability to do just that.





## YOUR LOCAL SCHOOL IS GROWING



1

### Growing confident young readers

78% of our Year 1s were at or above level in their Phonics Check (state average 58%)



### Growing parent endorsement

71% Parent Endorsement in the 2025 Family Survey, up from 43% in 2023

2

3

### Growing facilities

A new playground just completed, with a master plan currently being funded by State Government to increase capacity and improve buildings.



### Growing community presence

Our big kids visit Hesse Rural Health fortnightly, visit the local kindergartens and are regular contributors to community events and the Winchelsea Star publication!

4



# Winchelsea

## PRIMARY SCHOOL

## Welcoming Prep Families for 2027



### Principal Tours for Families

8:45am at the school - please RSVP by phone or email  
Families encouraged to come to one tour listed below

Tuesday, March 3rd  
Monday, March 30th  
Thursday, May 7th  
Wednesday, May 27th  
Friday, June 5th

### Come 'n' Play Evenings for Families & Students

5pm-6pm at the school - no RSVP required  
An opportunity for your child to come into our school and familiarise themselves with our classroom and staff  
Families and students welcome to attend all of these sessions

Wednesday, February 18th  
Tuesday, May 5th  
Monday, August 3rd



Contact Bron & Jen in our office - we look forward to hearing from you!

[winchelsea.ps@education.vic.gov.au](mailto:winchelsea.ps@education.vic.gov.au)  
(03) 5267 2134

Enquiries welcomed from 27<sup>th</sup> Jan  
Enrolment applications from 20<sup>th</sup> Apr







Zinaida Campion

## How I became a model

My journey from dress ups to producing photo shoots

When I was a little girl there were a few things I was passionate about: food (only toddler I know of that could eat 10 large pancakes for breakfast and still be fine), interior design (I pored over homemaking books before I could read the words and tried to replicate the displays depicted within), cooking (I made great mud pies and was a bona fide expert at creaming butter and sugar, just ask Mum), music (though not yet melodious, my voice was loud enough by age 3 to project across 40 acres, and I had no scruples about making up the lyrics either), and FASHION! At an early age clothes were the centre of my universe. One of my first spoken phrases was "pretty pink dress", and after all these years not much has changed. A very old photo shows me after a typical raid of Mum's wardrobe, wearing everything from petticoats to a fur to jewellery, all stacked on higgledy piggledy. My look of pride is unmistakable. I would even brave Mum's wrath and put on her makeup, and even though the collection was small (lipstick, eyeliner, mascara and clear nail polish), to me it was Picasso's palette!

In primary school my art was completely fashion centred. Whether I was drawing real people or fairies, they were always wearing intricately detailed outfits, and were always female. Eight year old girls don't really like boys you know, and anyway I always found men's clothes uninspiring, sorry guys!

Homeschooling during high school, I began my singing career, which in turn heavily influenced my fashion choices. The high diva styles of the likes of Maria Callas and Angela Gheorghiu inspired a more classy me, as did my keen interest in the royal family. I revered Catherine, Princess of Wales, at that time the Duchess of Cambridge, and could not get enough of the Queen's hats, God bless her. I even had a craze for corgis at one point!

I loved the glossy magazines, but the five figure prices in Vogue always terrified me. By then in my late teens, I'd made it my mission to create looks of similar quality, for Kmart prices. Wait, WHAT? Op shops. All that near new Laura Ashley and Max Mara that I had a special instinct for sniffing out from between piles of fast fashion. Hooray for the age of recycling. But my treasure hunts are a story for another time.

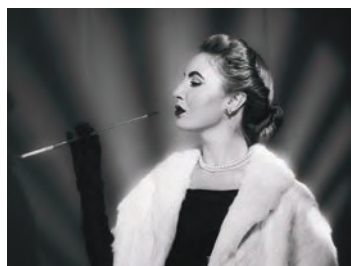
I never considered myself a photogenic person. I admired people who could pose and I loved dressing for all my occasions, and even when there wasn't a special occasion, but I never thought I could have a future in modelling. That is until I had to take an enforced break from singing due to health reasons last year. With time hanging heavy on my hands, at the encouragement of a friend who had started modelling herself, I decided to have a go.

To share your stories and inspire the community, please contact Zinaida. 0428 403 784 zinaidacampion@gmail.com

It didn't take long to find many Facebook groups in Melbourne dedicated to the photography and modelling industry, where I could see what the others were doing and how shoots were even organised. I also kind of felt there was room for improvement. I'd be crucified for saying this, but the Melbourne fashion world is not, in my opinion, very original! (Is it my imagination, or is everyone copying Hailey Bieber? Her bland facial expressions and minimalist aesthetic seem to be everywhere). Wanting something more realistic, I started producing my own photo shoots very quickly. I prefer outdoors in natural light, and I generally avoid the city. My concepts are mainly nature based or vintage/heritage, and for both Winchelsea has proved very rich in locations. A shoot in front of the Shire Hall was published in the international Vigour Magazine, a proud moment. I plan to stage many more shoots here, putting Winch on the map, growing my "Winch Girl" series which I hope to exhibit, and hopefully hosting our town's very first runway show in the future! Let's keep it local. Ciao!



The Shire Hall, Winchelsea.  
Photo by Keith Müller



Old Hollywood shoot  
at Silver Noir Studios  
Photo by Tim Hetherington



With Huzaifa Fayyaz,  
Botanical Gardens Geelong  
Photo by Anthony Cleave



With Alex Stone,  
Point Roadknight  
Photo by Keith Müller



The Barwon River,  
Winchelsea  
Photo by Keith Müller

**Zinaida Campion** is a classical soprano, vocal coach, artist and model raised in Winchelsea. She is an alumna of VOYCE Victorian Opera, a Windfire Vocal Scholar, and Co President of Geelong City Opera. She has a strong background in languages, a love of local history, and an all-consuming passion for promoting the arts in rural areas.







**Winchelsea Community House Inc.** A6247K  
 28 Hesse Street, PO BOX 75, WINCHELSEA, Vic. 3241  
**Phone:** (03) 5267 2028 **Email:** [manager@winchhouse.org.au](mailto:manager@winchhouse.org.au)  
**ABN:** 48 932 340 254

## Yoga & Mat Pilates in the Shire Hall



### Mat Pilates 6.45pm Tuesdays

Pilates original style, on the Mat. Guided movement that supports strength and postural alignment, with a strong focus on building core, balance and flexibility. Move with intention, build resilience, and feel stronger in your body.

### Wednesdays Yoga Flow 6.30pm

Inclusive, all levels of experience are welcome and encouraged. You will not be limited by age, shape or by being a beginner. Lisa invites you to unlock the ancient wisdom stored in your being. Build strength, clarity and bliss as you move through a dynamic whole body experience. Expect a playful, powerful class that leaves you feeling refreshed.

### Thursdays Vinyasa Yoga 7pm

Kate offers dynamic vinyasa-style class with a strong focus on core strength and balance building. Each session weaves together pranayama (breathwork), meditation, yoga philosophy, and mindful movement. Students can expect to enhance their practice in every class and deepen their connection to yoga.

**Casual Class: \$25 or 5 Class Pass: \$100**

Email: [shirehall@winchhouse.org.au](mailto:shirehall@winchhouse.org.au) or call: 0352672028

## A Heart Centred Yoga Immersion

FREE COMMUNITY WORKSHOP

@ Winchelsea Shire Hall

Saturday February 7th 9.30am - 11.30am

Pranayama Vinyasa Yin Nidra

Slip into a moving meditation as we journey gently into the heart space.

All levels of experience from absolute beginners to experienced practitioners are warmly welcomed and supported in our friendly environment. Recommended for 12yo and above. Please BYO mat and cushion if possible. This gathering is offered via donation.

Places are limited and registration is essential.

<https://events.humanitix.com/free-heart-opening-yoga-workshop-with-lisa-grace>



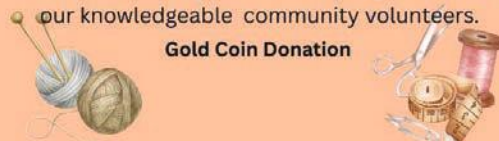
*Stitch it,  
Don't ditch it!*

Wednesday's from 4<sup>th</sup> of Feb 2026  
 9.30am - 4pm

Winchelsea Community House 'Star Room'  
 SEWING MACHINE & OVERLOCKER available.

Bring along a craft project you'd like help with, learn to sew, knit, crochet or repair clothing and homewares yourself with the guidance of our knowledgeable community volunteers.

Gold Coin Donation



## WINCHELSEA KNITTING GROUP

Thursday Mornings 10.30 -12.00  
 Winchelsea community house.

Returning Thursday 5<sup>th</sup> Feb, 2026

All Welcome, Learn to knit or bring a project to work on while you enjoy a cuppa and a chat



### CHATTY CAFÉ

Friday's 10.30am – 12.30pm from Feb 16<sup>th</sup>.



"Sip, Chat, Share, Care"

Winchelsea Shire Hall.

Everyone Welcome, Gold coin donation.

## TAI CHI

Friday Mornings

Winchelsea Community house

9am - 10am

\$10 Per Class

Originating in China, Tai Chi and Qigong (Chi Kung) is the practice of slow meditative physical exercise designed for relaxation, balance and health suitable for all ages.



Winchelsea Tai Chi

## Craft & Crochet Group



\$5 per person.



1pm, every second Saturday  
 in the Winchelsea community house.

Next session: Saturday 7<sup>th</sup> of Feb

[reception@winchhouse.org.au](mailto:reception@winchhouse.org.au)

Please take some time to fill out the community survey and share your ideas for Winch House in 2026! Enter the link into your browser to complete the survey:

<https://forms.gle/EnrxZVTmfEPEG8ap9>





# history of winchelsea

## Winchelsea Presbyterian Church, Hesse Street Winchelsea

Today Winchelsea, as most country towns, is a secular, modern and multicultural community. This is part of our modern identity and is to be celebrated.

In colonial times however, religious institutions were at the centre of community and provided services to supplement those offered by the state in terms of public welfare, education and medicine. Churches also provided hubs for social cohesion and brought individuals together as communities.

Colonial Churches in Victoria were usually exclusive to ethnic groups with landed Brits tending to favour Anglican Churches, Working class Anglo-Celts tending to favour Wesleyan Methodist churches, Scots tending to favour Presbyterian Churches, Working class Irish tending to favour Catholic Churches, Germans favouring Lutheran churches, and Jews establishing synagogues in Melbourne, Ballarat and Geelong.

While Muslims were present in colonial Victoria, there is no evidence of a purpose-built mosque in Victoria during the colonial era, with the earliest mosques in Australia being constructed in Marree, South Australia in 1882, Adelaide, South Australia in 1888, Broken Hill, New South Wales in 1887.

We have examined the role of the Austin Family in establishing St. Thomas' as Winchelsea's first religious institution, and the short-lived Methodist Chapel which became Mr Carse's School house. our next few articles will feature other early churches in the township.

By 1869 it was believed that Presbyterians formed a major portion of the inhabitants of Winchelsea, and required a minister of their denomination. The Rev. T. M. Fraser and the Rev. J. Brownlie were commissioned to visit Winchelsea to establish a church here.

The first Presbyterian services were held in the Shire Hall on 19 September 1869 crowded with an attentive audience and motions were set in place for the foundation of the Presbyterian Church. Local Presbyterians made a petition to the Presbytery at Geelong and raised funds for the foundation of their own church in Winchelsea, raising over £100 in the year before the building began, which was the equivalent of a year's wages for a skilled trades worker and would be worth approximately \$14,000 to \$16,000+ in today's money. At least £20 of that was donated by non-Presbyterian Winchelsea locals who supported the cause.

The Winchelsea Presbyterian Church was built in 1870. In May there was a public ceremony for the laying of the foundation stone and a time capsule, attended by Mr. George Lee, secretary to the building committee. The corner stone was then formally laid by James Stirling, Snr., Esq., followed by loud applause, and Mr George Anderson gave a speech. The church officially opened on 30 April 1871. The stonework was completed by William Lauder, Stonemason of Winchelsea whose descendants are still living in the town today. The Carpentry for the church was done by J.H. Sarks and the plastering by Robert Marchain.

The building is now heritage-listed and serves as the Winchelsea Uniting Church, located on Hesse Street next door to the

Winchelsea and District Historical Society. It remains an acti of the local community, serving under the Presbytery of Port West.



Hesse Street Winchelsea

The Rev. Mr. Giles was the first minister from 1871-1873, but he resigned two years later due to lack of funding. In 1874 a large and successful concert was held in the Shire Hall to raise funds for the Presbyterian Church. The highlights were an exceptional piano performance by Miss. E. Austin and singing by miss Sharp, Miss Cooper, Messrs Walker, Urquhart, and McMullen.

In April 1878 the Winchelsea Presbyterian Church held a fundraising Bazar including lotteries in the Shire Hall. The event was attended by members of all denominations, entertained by local amateur vocalists. Roughly £150 was raised for the Church from the event.

By the 1880s the ladies of the church were organising and hosting an annual tea and sacred concert of the Winchelsea Presbyterian Church, decorating the Church and the tables with every kind of delicacy, and profusely decorated with flowers with over 200 guests attending.

In 1880 the Rev. Mr Lind described the church, though in an unfinished state, as a model church, and when completed would rank amongst the best sacred edifices in the colony.



**Micheál P O'Dhonnabháin** has lived in the Winchelsea area since 2010.

Michael completed a Bachelor in History and Anthropology and a Master of Cultural Heritage at Deakin University, then went on to complete a PhD at Federation University, focusing on colonial and European collections of Indigenous Australian Cultural Heritage. Michael lectured at Federation and Monash Universities, lecturing in World History, Folklore Studies, Indigenous Studies and literary studies. Michael has worked in museums and cultural collections across Victoria, and can usually be seen in and about Winchelsea with his wolfhound.



## Bushfire

# Supporting communities after emergencies

### Jumpleads

With the recent bushfires, we know so many people want to help and that generosity is deeply appreciated by those impacted across Victoria.

Right now, though, it's not always clear what's needed most. Random donations of clothes or household items, while well-intentioned, may not be helpful yet and can overwhelm local efforts.

The best way to assist is through official channels and platforms set up to coordinate support. These ensure help gets to where it's needed most.

### Across Victoria

VicEmergency Relief Assistance  
<https://emergency.vic.gov.au/relief>

Red Cross Disaster Relief  
<https://www.redcross.org.au>

Wildlife Victoria  
<https://www.wildlifelifevictoria.org.au>

GIVIT Connecting your money, goods or time with people in need  
<https://www.givit.org.au>

BlazeAid – volunteers helping rebuild fences & infrastructure for rural families  
<https://blazeaid.com.au>

### Donations & Financial Support

FRRR Disaster Recovery Appeal  
<https://frrr.org.au>

Bendigo Bank Victorian Bushfire Appeal  
<https://www.bendigobank.com.au>

### Victorian Emergency Relief & Recovery Foundation – 2026 Bushfire Appeal

<https://www.vic.gov.au/2026-Victorian-Bushfire-Appeal>

## Wurdale Brigade fire support

### Stewart Mathison

Nine Wurdale members volunteered on crews sent to the fires at Gellibrand and Carlisle River, some doing 3 or 4 shifts amounting to over 200 hours on the fire ground.

In addition 3 brigade members assisted at the Mt Mercer fire.

*The Wurdale Fire Brigade is an official volunteer-powered fire and emergency brigade in the Country Fire Authority (CFA) of Victoria.*

70 Wormbete Station Road, Winchelsea South 3241  
[wurdalecfa@gmail.com](mailto:wurdalecfa@gmail.com)

## Climate pollution driving deadly heat

### Climate Council

CSIRO and the Bureau of Meteorology's State of the Climate report concludes our country is heating up around the year - not just over summer - with both daytime and night-time temperatures rising, and more frequent extreme heat driven by climate pollution.

Climate Councillor Dr Kate Charlesworth said: "When nights stay hot, bodies cannot recover, and that is when heat stress becomes most dangerous. Hotter days and hot nights drive heat stress, dehydration and collapse, and the danger ramps up fast for older people, young children, people with pre existing illness, and anyone working outside or stuck in a hot home without adequate cooling."

Dr Kate Wylie, Executive Director, Doctors for the Environment Australia: "Bushfire smoke carries tiny particles that lodge deep in the lungs and can even enter the bloodstream, hitting hardest for children, older people, pregnant women, and anyone with asthma or heart and lung conditions. Climate pollution from coal, oil and gas is driving longer, hotter, more dangerous heatwaves, we need urgent action to protect our health and move beyond fossil fuels."

## Fire Danger Period NOW

### Country Fire Authority

The Fire Danger Period is when CFA restricts the use of fire in the community. This is to help prevent fires from starting.

**The Fire Danger Period is NOT the same thing as a Total Fire Ban.**

Your local council or shire may have their own local laws about lighting fires. Contact your local council to find out what municipal local laws may be in place. Local laws may be in place all year

Municipality	Start	End
SURF COAST	24/11/2025	01/05/2026

If you need to use fire in the open air during the Fire Danger Period or on a day of Total Fire Ban you may require a permit.





# Winchelsea CFA acknowledgment

**Kaylene Stocks, Winchelsea Fire Brigade Captain**

The last few weeks have been full-on and, at times, incredibly stressful.

One thing I can genuinely say, though, is how grateful I am for the support not just for me, but for my brigade and CFA as a whole.

Life doesn't stop just because there's fire in the landscape.

We're extremely fortunate not to have been under direct threat, but for volunteers like me, taking days off work means missing out on pay, and that hits the pocket hard.

This isn't a pity party, it's simply the reality for so many of us who choose to step up for our community.

And honestly, even if I had to live on rice and beans, I'd still do it. Helping those less fortunate will always matter more.

To everyone who has supported us: thank you.

To those who've dropped off donations, supplied food day after day, and to the business in the Otways who created special firefighter lip balm — your kindness means more than you know.

Yesterday someone even came out and cooked waffles for us, which was such a welcome distraction from the planning and preparing for what we knew was coming.

A big thank you as well to our local bakery and IGA for making us lunch. All of this happened just before one of our trucks was sent to Lismore and another to Gellibrand.

To our families at home thank you. You carry a huge part of this load in silence: worrying, waiting, and keeping everything running while we're out on the line.

To those who manned the station day in and day out — your steady presence keeps everything turning.

And to all the emergency services working alongside us — FFM, CFA, FRV, firefighters from other states and across the sea, Police, Ambulance Victoria, SES, all the helitack crews who at times risk it all, and the many services working behind the scenes (far too many to list) — thank you for everything you do.

Last week we were fortunate; things could have been much worse. But it's far from over, and we all need to take the quieter moments when they come, rest, and recharge after the days we've just had.

## Here's what matters in 2026

### Jumpleads

As we step into 2026, our hearts and thoughts are with everyone impacted by the recent fires across regional Victoria and other extreme weather events across Australia. These events remind us of the incredible care within our communities & the importance of connection and trust in times of challenge

Here are some practical and meaningful ways you can assist with disaster responses

- Donate to trusted relief funds
- Volunteer with local recovery groups
- Offer skills, tools and items that are needed by registering on local platforms
- Provide emotional support - sometimes a simple check-in means everything

For a list of Victoria specific links and platforms relevant to the recent fires: Visit the latest Jumpleads blog post Jumpleads NFP is a social enterprise that "jump-starts" arts & community initiatives, with a mission to change cultures & invigorate communities for a better future

## Lorne Bushfire Place of Last Resort

### Surf Coast Shire

**Point Grey site to close from 2 February; Lorne foreshore stays open**

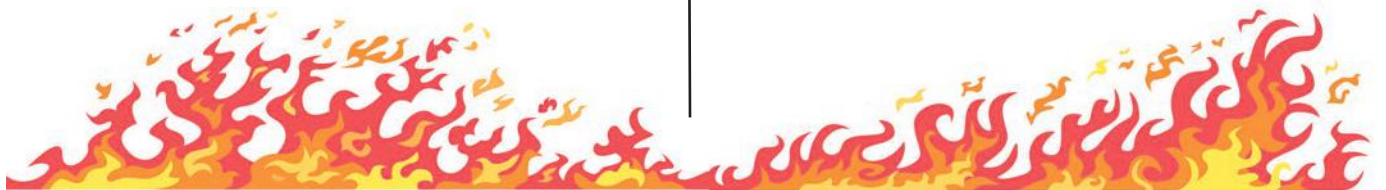
Point Grey in Lorne will temporarily close to the public from Monday 2 February while the Great Ocean Road Coast and Parks Authority carries out redevelopment works, and will therefore be unavailable as a Bushfire Place of Last Resort.

**The foreshore area along Mountjoy Parade will remain as a Bushfire Place of Last Resort within the town.**

Residents and visitors are always encouraged to enact fire plans and leave early. Places of Last Resort are locations to attend only when all other personal bushfire plans have failed.

They do not replace a well-thought-out and practised plan; they are simply clear areas that provide separation distance from the bushfire hazard.

Stay informed and prepare for the fire season: [surfcoast.vic.gov.au/FireReady](https://surfcoast.vic.gov.au/FireReady).







# The Climate Report

Compiled by Judy Cameron

## What happens to the human body in 49C heat?

### Australians are finding out

Donna Lu, *The Guardian*

Doctors warn there are biological limits to temperatures we can survive, and exposure to extreme heat can provoke a heart attack.

Extreme heat is the most common cause of weather-related hospitalisations in Australia, and kills more people than all other natural hazards combined.

What does exposure to extreme heat – such as a temperature of 49C – do to the body?

- In warm environments, the body dissipates heat through the skin, which is responsible for about 90% of heat loss. It does so by sweating and by increasing blood flow to the extremities.
- Prof Ollie Jay, academic director of the heat and health research centre at the University of Sydney, says: “Your heart has to work a lot harder because you’re basically redistributing this blood in an effort to keep cool towards the skin, but what this means is that your blood pressure would drop unless your heart beats more times per minute.”
- The degree of heat people experience could far exceed forecast figures, because the Bureau of Meteorology’s weather stations record ambient temperature in the shade. “If you’re out in the middle of the day in direct sunlight, the temperature can be as much as 15C hotter,” Jay says.
- “We have to be careful when a risk [is] associated with a given temperature,” Jay says, because it depends on several other factors – including the amount of wind and humidity. “If there’s more moisture in the air, it makes it more difficult for the sweat that we’re producing to evaporate, which is the only way in which we can keep cool when it’s hot.”
- Clothing can prevent sweat from evaporating through it – a problem for those in certain work environments.
- Age is also a factor - particularly above 75, our ability to sweat is quite diminished, which means that you’re a much greater risk of overheating.
- Public health authorities suggest staying well hydrated – drinking six to eight glasses of water a day, and avoiding alcoholic, hot or sugary drinks. People with heart failure and other medical conditions that may require limiting fluid intake should consult their medical practitioner.
- If it’s not humid, wetting the skin can also help, because most of the heat the body loses in warm environments is due to sweat evaporating.

The full story, including a link to a free HeatWatch tool that provides individualised heat risk scores that take in weather conditions: [https://www.theguardian.com/australia-news/2026/jan/27/what-happens-to-the-human-body-in-49c-heat-australians-are-finding-out?CMP=share\\_btn\\_url](https://www.theguardian.com/australia-news/2026/jan/27/what-happens-to-the-human-body-in-49c-heat-australians-are-finding-out?CMP=share_btn_url)

## New data uncovers dire situation about global food production

Tina Deines: *Yahoo News*

- Staple crops are going to be harder to come by as the world continues to warm, new data warns.
- The dataset found that every additional degree Celsius of

warming on average will slash the world’s food production abilities

- If planet-heating pollution were to rapidly decline to net zero, global crop yields would only decrease by 11%, but if it continues to rise unchecked, yields would go down by 24%.
- This unsettling agricultural future comes even as the world continues to waste vast amounts of food. According to the U.S. Department of Agriculture, 30-40% of our food supply is wasted each year.
- Meanwhile, both waste and agricultural challenges associated with a warming climate contribute to food shortages and higher price tags at checkout. Full story: <https://www.yahoo.com/news/articles/data-uncovers-dire-situation-global-080500072.html>



## Antarctic penguin breeding cycles changing rapidly in response to climate change.

Jano Gibson, *Antarctic reporter ABC News*

- Phenology is the study of climatic influences on recurring life cycle events, such as breeding, in animals and plants.
- A long-term study has found the breeding cycle of a penguin species in Antarctica is changing at the fastest rate recorded in birds, likely in response to climate change.
- Time lapse cameras were equipped with thermometers, allowing the researchers to measure temperature changes at each colony
- The results showed they warmed up by an average of 0.3 degrees Celsius per year over the 10-year study period.
- The report warned that earlier and overlapping breeding periods due to warmer temperatures and changes in the extent of sea ice could increase competition between species.
- As penguins are considered ‘a bellwether of climate change’, the results of this study have implications for species across the planet.

Full story: <https://www.abc.net.au/news/2026-01-20/antarctic-penguin-breeding-cycles-changing-climate-change/106247472>



## New poll reveals climate stress hitting Aussie homeowners

Climate Council

National polling commissioned by the Climate Council shows that most Aussie homeowners are concerned that extreme weather is creating unaffordable insurance costs, with many considering going without cover.

A YouGov survey of more than 1500 Australians found that 54% of people with home and/or contents insurance are worried that extreme weather (such as bushfires, floods or storms) will make home insurance unaffordable or unavailable where they live. Almost half (46%) have already experienced a hike in premiums. As climate pollution from coal, oil and gas drives more frequent and severe disasters, one-in-five people (22%) with home and/or contents insurance say they are likely to consider going without insurance if worsening extreme weather keeps pushing up the cost of insurance.

The Insurance Council of Australia last week revealed that extreme weather events in 2025 cost almost \$3.5 billion in insured losses from 264,000 claims.

As of 2023, one in 20 Australian households (5.1%) was under insured, and about one in 30 (3.3%) was uninsured. That equates to more than two million people.

Climate Councillor and economist Nicki Hutley said: "An ever-growing number of Australians are finding themselves caught between an insurance rock and a climate hard place. Families know their homes face greater risk from climate-fuelled disasters, and those same risks are helping drive insurance costs — and insurance itself — out of reach as more Australians struggle to pay their premiums.

"It's a blunt reminder that climate pollution is already costing us - as more disasters anywhere, drive up costs everywhere - and those costs are growing."

Climate Councillor and infrastructure expert Janice Lee said: "Unfortunately, this summer is another reminder that more and more often we're seeing wild and unpredictable weather that burns and floods houses. The costs of these events, driven by climate change, hurt families, impact the value of homes and create additional cost of living pressure. In 2025, Australians paid up to \$700 more for home and contents insurance premiums than in 2024.

"Reducing climate pollution is critical to Australia's economic security. Either we invest early to avoid climate change tipping points, or we pay for constant repair and adaptation, with ordinary Australians footing the bill."

Polling Key Findings:

- 54% of people with home and/or contents insurance are worried that extreme weather will make their home insurance unaffordable or unavailable where they live;
- 46% of Australians with home and/or contents insurance report that extreme weather increased their premiums;
- 65% of home owners without insurance identify cost as the key barrier, alongside 53% of renters; and
- One-in-five people (22%) with home and/or contents insurance today are likely to consider going without insurance if extreme weather and insurance premiums continue to rise.

## Friends of the Barwon

Jane Bartier, Chair FOTB

The Barwon system comprises two basins or catchments and includes the Yarrowee /Leigh and Moorabool rivers, and several hundred kilometres of minor tributaries. It closely approximates the G21 region boundary.

A healthy, flowing and life sustaining Barwon River system is both our goal and our obligation to the generations to come.

Our group's purpose is to be an independent knowledge-based community leader and educator for the protection and improvement of the ecosystem of the Barwon catchment.

Friends of the Barwon works on the lands, waters and seas of the Wadawurrung People of the Kulin nation and the Gulidjan and Gadubanud people of the Maar Nation, and we acknowledge them as the Traditional Owners. We pay our respects to their Ancestors and Elders, past and present.

Friends of the Barwon met in December 2025 for our Annual General Meeting. Guest speaker, Justin O'Connor, an aquatic biologist who leads the Aquatic Connectivity Program at the Arthur Rylah Institute for Environmental Research. spoke about:

- fish in the Barwon system,
- the need to improve fish passage at weirs and barriers,
- previous work on the lower Barwon barrage fishway, and
- the work he is involved in with enhancing fish passage at Buckley's Falls.

Justin has extensive experience as a freshwater fish scientist, with his work on understanding how native fish respond to human-induced pressures such as reduced connectivity, altered flow regimes, exploitation and habitat degradation. Justin collaborates closely with CMAs, land managers, community groups and research organisations to ensure catchment restoration programs are designed and implemented in ways that support the long-term sustainability and recovery of native fish populations.

I look forward to this year in which Friends of the Barwon can continue to bring a strong voice into the many complex discussions on achieving a healthy Barwon river system, amidst the myriad demands this living entity faces.

### Ramsar Week 2-6 February

Ramsar Week raises awareness of the importance and value of Ramsar listed wetlands which hold international significance for migratory birds and provide habitat for many threatened species. The Corangamite CMA region covers 13,340 square kilometres of south-western Victoria; two Ramsar-listed wetland systems are within the region. The Port Phillip Bay (Western Shoreline) and Bellarine Peninsula site covers approximately 22,694 ha near Geelong, and the Western District Lakes site covers approximately 32,898 ha around Camperdown.

### Donate through the Container Deposit Scheme

FOTB has signed up to accept donations via Victoria's Container Deposit Scheme. Donate your refund at any of Reverse Vending Machines, including 10 Willis Street Winchelsea. Download the free CDS Vic West App to your phone and set it up so that your recycling refunds are directly transferred to FOTB.

### Become a member!

For just \$20 a year (for a single subscription), you can be kept up to date with what's happening with our rivers and water resources, both in our region and beyond!

friendsofthebarwon@gmail.com





### WANTED: UKULELES

Winch House is looking for unwanted ukuleles to support a coming course "Intro to Ukulele".

If you have an unloved Uke at home and wish to donate it, pls drop off at Winch House or ph 0408502611 to arrange collection.

### THE OP SHOP

The Op Shop cannot accept donations of these articles at the moment.'

DVDs, CDs, books, hiking bags, backpacks, duffle bags, suitcases, and cases.

# Winchelsea Star COMMUNITY NOTICEBOARD

email [editor@winchelseastar.org.au](mailto:editor@winchelseastar.org.au) or  
leave a note at Winchelsea IGA

### WINCHELSEA TENNIS CLUB

JUNIOR COACHING

Mon 3.30pm

with experienced Nicole Mullen \$10

### WINCHELSEA PICKLEBALL

The Tennis Club runs Pickleball every Wednesday 7pm at the Winchelsea Leisure Time Centre!

\$5 All equipment supplied

Wear suitable footwear

Lesley Mathison 0438 672 197

### WINCHELSEA LIONS CLUB

Large bags of pine cones for fire pits \$5  
Contact Ray 0406 371 239

### BED FOR SALE

Girls king single bed and new mattress.

White with a heart bed head frame.

Hardly been used, great condition \$20.

52672954. Must sell as I need a spare room.

### 1ST MODEWARRE SCOUT GROUP

We have exciting programs for Joeys, Cubs & Scouts this year. We have a few vacancies at Joey & Cub levels, and plenty of room at Scouts.

Group Leader Marie McPadden

0409 330 147

### DIAMOND DOT DAY

Resumes on 7 February

Senior Citizens Centre, Winchelsea

10 till 4 \$5 entry, \$10 includes lunch

More info ph Tracey 0427500649

### UNITING GROVEDALE BOOK SALE

Friday 7 Feb & Saturday 8 Feb 2026,  
Friday 6 March & Saturday 7 March 2026  
272 Torquay Rd, Belmont 10.00am-2.00pm.

All books \$1.00, children's books \$0.50!

Raises funds for local services

# Winchelsea Star



This week's Edition

Editor Judy Cameron Designer Susan Corby

Next Production Coffee Meeting Sat 28 February  
9am @ La Hoot All Welcome - come enjoy a coffee!

## send your stories

[news@winchelseastar.org.au](mailto:news@winchelseastar.org.au)

## LOCAL NEWS and ARTICLES WELCOME

Email [news@winchelseastar.org.au](mailto:news@winchelseastar.org.au)  
or leave hard copy at IGA supermarket

### News Deadline

5pm Fridays

4pm Sundays - hard copy left at IGA

6pm Sundays - sports results and  
weekend events

**EDITOR 5273 0295**

Leave a message

**ADVERTISING 5273 0294**

[advertising@winchelseastar.org.au](mailto:advertising@winchelseastar.org.au)

## free online subscription

[www.winchelseastar.org.au](http://www.winchelseastar.org.au)

[facebook.com/TheWinchelseaStar](https://facebook.com/TheWinchelseaStar)

## production

Editors: Cerrie Forgan, Yvonne Stevens, Judy Cameron  
Advertising: Sasha Gauntlett, Neil McInnes  
Design: Susan Corby, Tony Phelps  
Printed by: Cromwell Forganssen,  
Winchelsea Community House  
Website by: Winch Websites

## committee

President: [president@winchelseastar.org.au](mailto:president@winchelseastar.org.au)  
Neil McInnes  
Treasurer: [treasurer@winchelseastar.org.au](mailto:treasurer@winchelseastar.org.au)  
Cathy Cheadle  
Secretary: [secretary@winchelseastar.org.au](mailto:secretary@winchelseastar.org.au)  
Tony Phelps  
Members: Mick O'Mara, Linda Carter, Susan Corby,  
Sasha Gauntlett, Judy Cameron,  
Yvonne Stevens, Cerrie Forgan



© Winchelsea Star Org. Inc. All rights reserved  
Winchelsea Star Organisation Inc.  
Reg. No. A0053999F ABN 75 941 529 279  
[winchelseastar.org.au](http://winchelseastar.org.au) PO Box 5 Winchelsea 3241

Views expressed are not necessarily those of the  
Winchelsea Star or Committee. The Winchelsea Star reserves the right to  
edit or not publish any article.  
Vectors Freepik.com



# Watering a Garden

Peter Groves



While I observed a sprinkler watering a concrete path, it reminded me to write this article. I wonder if, while we suffer this relentless heat in recent days, whether we think of how plants in the garden are managing without normal rainfall for months.

There would be little or no transpiration whereby plants take moisture from a root zone to transfer to their leaves. When watering in the garden, and in recognition of this, I often allowed the hose without a sprinkler head, to run on to the base of the plant where soakage goes straight to the root zone. This must surely be an efficient way of ensuring the plant receives water rather than it running on a concrete path.



A good example is in Israel where I understand tomatoes are effectively grown by allowing just enough water to reach the root zone of the plant. Fortunately there are irrigation drippers available which push into plastic bottles and these are available at hardware stores. By filling bottles regularly this allows a measured amount of water to reach each plant.



In Hamilton I had a mulberry tree that every summer lost its fruit due to dry conditions. I arrested this problem by allowing a hose to trickle slowly onto the base of the tree. The result being juicy mulberries for all including the peacocks that roamed the garden.

## Save water and earn a rebate

Barwon Water

Did you know outdoor water use accounts for 50% of the average Australian's household water use in the summer months?

If you're a residential customer and would like to save water around the home and garden, our new WaterSmart Home & Garden Rebate Program can help.

Rebates of up to \$100 are available for Smart Drop Certified water saving products such as pool covers, drip irrigation, smart irrigation controllers, and pressure washers. Rebates are capped at \$300 per property if multiple products are purchased.

### WaterSmart Home and Garden Rebate

The WaterSmart Home & Garden Rebate is designed to support residential customers to save water around the home and garden by purchasing eligible water saving products. The rebate will be offered as a pilot during summer, commencing 1 December 2025 to 31 March 2026.

### Eligibility

To be eligible for a WaterSmart Home & Garden Rebate, you must:

- be a Barwon Water customer that lives in a property within Barwon Water's service region that is charged a residential water charge (owner or tenant).
- have purchased an eligible product for the property that corresponds with your Barwon Water account number, on or after 1 December 2025 and prior to applying for the rebate (proof of purchase is required).

### Eligible products

Type	Product	Rebate amount	Rebate per household
Pressure Washer	Any brand	50% up to maximum \$100	1 rebate claim per eligible household
Garden Hose	Must be a <b>SMART DROP Certified</b> product	50% up to maximum \$100	1 rebate claim per eligible household
Irrigation controllers Wi-Fi	Must be a <b>SMART DROP Certified</b> product	50% up to maximum \$100	1 rebate claim per eligible household
Drip irrigation	Any brand	50% up to maximum \$100	1 rebate claim per eligible household
Pool Cover/blanket	Must be a <b>SMART DROP Certified</b> product	50% up to maximum \$100	1 rebate claim per eligible household
Water efficient showerhead	5-star WELS rated only	\$100	1 rebate claim per eligible household
AquaReturn or other hot water recirculation device	Must be a <b>SMART DROP Certified</b> product	\$100	1 rebate claim per eligible household

To make a claim, <https://www.barwonwater.vic.gov.au/water-and-waste/saving-water/watersmart-home-and-garden-rebate-pilot/watersmart-home-and-garden-rebate-pilot-program-application-form>



# What's on Weekly

## MONDAY-FRIDAY

### WINCHELSEA COMMUNITY HOUSE

9am-2pm, 28 Hesse St, Winchelsea  
(03) 5267 2028

### WINCHELSEA TOY LIBRARY

9am-2pm (03) 5267 2028  
Winch Community House,  
28 Hesse St, Winchelsea

## MONDAY-SATURDAY

### WINCHELSEA HEALTH CLUB

Accessible - 24 hours  
Eastern Reserve, 70 Hopkins St  
5267 2336

## MONDAY

### SURF COAST SHIRE FIRE DANGER PERIOD

24/11/2025 - 01/05/2026

### CO-WORKING & STUDYING SPACE

Mon and Thurs 9am-2pm \$10  
Winchelsea Community House  
28 Hesse St, Winchelsea  
(03) 5267 2028

### MAINLY MUSIC

10-11am (school terms)  
Interactive Music 0-4yrs  
St Thomas' 25 Barwon Tce 0407838256

### WINCHELSEA GIRL GUIDES



4.30pm-6pm (School term)  
St John's, Mercer /Harding St  
Yvonne Orchard 0448 672 630  
Lily Dell Rennie 0428 936 441

### 1ST MODDAWARRE SCOUT GROUP

Cub Scouts 6:30-8pm (school term)  
Modewarre Hall, Cape Otway Rd,  
Marie McPadden 0409330147

### VINYASA YOGA

7pm \$25 Winchelsea Shire Hall,  
28 Hesse St, Winchelsea  
(03) 5267 2028

## TUESDAY



Senior Citizens Centre,  
36 Harding St, Winchelsea  
Elaine Atkinson 0458 009 616

### 1ST MODDAWARRE SCOUT GROUP

Joey's 5-6pm (School Term)  
Scouts 6:30-8:30pm (School Term)  
Marie McPadden 0409330147

## WEDNESDAY

### WINCHELSEA ZUMBA DANCE

Combined Zumba Fitness and Gold class.  
6:30-7:30pm @The Globe Theatre.  
Simone Dunmore: 0468 375 036

### WINCHELSEA MEN'S SHED

9.30am 51 Hesse St, Winchelsea  
Ray Atkinson 0407839139  
winchmenshed@gmail.com

### SENIOR CITIZENS CENTRE

Wednesdays 1- 3.00 pm  
36 Harding St, Winchelsea  
Jean Shinnars 52672263, 0427672263  
jeanshinnars@gmail.com

### MOTHER GOOSE SONG & RHYME

2pm (School term) FREE  
Winchelsea Community House,  
28 Hesse St, Winchelsea

### WINCHELSEA HISTORICAL SOCIETY

Wednesday 1-4:pm, Friday 10am-3pm  
Hesse St, Winchelsea

### STITCH IT, DON'T DITCH IT!

2-4pm Wednesdays  
Winch Community House, Hesse St  
SEWING MACHINE & OVERLOCKER  
AVAILABLE  
Gold Coin donation

### KIDS ART & CRAFT SESSIONS

4-4.45pm fortnightly Age 5+  
\$15 per session or \$60 term  
Winchelsea Community House  
28 Hesse St, Winchelsea 5267 2028

### MEL'S DANCE CENTRAL

Afternoons/evenings Pre-school - teens  
Winch Senior Citizens Club  
www.melsdancecentral.com.au

### CWA WINCHELSEA

7-8.30pm 2nd Wed monthly  
Senior Citizens, Harding St  
winchelsea.cwa@gmail.com



### SES WINCHELSEA

7.30pm 132500  
323 Mousley Dr, Winchelsea



### GROWING WINCHELSEA

Winchelsea Railway Station  
Wednesday 25 February,  
6.30pm - 7.30pm.

## THURSDAY

### WINCHELSEA MEN'S SHED

*For the Community*

### NEW MEMBERS WELCOME

Every Wednesday from 9.30am  
51 Hesse Street, Winchelsea

### KINDLING/OFFCUTS \$7.00 bag

Pickup Wednesdays 9.30-2.30  
For delivery, call Bill 0438 083 373

### NESTING BOXES Birds/animals

### NEED A JOB DONE?

Woodworking, Furniture Repairs  
Call in Wednesdays to order

Ray Atkinson (Co-ordinator)  
0407839139  
winchmenshed@gmail.com

## Winchelsea Community Market

First Sunday on the Month (except November)

**Shire Hall  
9am to 1pm**

**Upcoming Dates:**

Mar 1	Sep 6
Apr 5	Oct 4
May 3	Nov 8
Aug 2	Dec 6

Food, Produce, Coffee, Plants, Crafts  
Homewares, Candles, Bags, Skincare  
Jewellery, Soap + Baby Goods



### CHAT WITH YOUR COUNCILLOR

10am-12pm First Thursday of month  
Winchelsea Shire Hall 28 Hesse St,

### COWORKING & STUDYING SPACE

9am-2pm \$10 5267 2028  
Winch Community House, 28 Hesse St

### WINCHELSEA PLAYGROUP

10am-12pm (School term) \$5  
St Thomas Hall, 27 Barwon Tce  
[winchelseaplaygroup@gmail.com](mailto:winchelseaplaygroup@gmail.com)

### WINCHELSEA PICKLEBALL

10-11.30am  
Leisure Time Centre, Gosney St  
Lesley Mathison 0438 672 197

### WINCHELSEA KNITTING GROUP

10.30am-12pm FREE  
Winchelsea Community House,  
28 Hesse St, Winchelsea  
(03) 5267 2028 (03) 5267 2028

### MAT PILATES

6.45pm \$25 Winchelsea Shire Hall,  
28 Hesse St, Winchelsea  
(03) 5267 2028

### WINCHELSEA MOVIE CLUB

7.30 (3rd Thurs each month)  
Globe Theatre, Main St, Winchelsea  
[growingwinchelsea.com/project/winchelsea-movie-club/](http://growingwinchelsea.com/project/winchelsea-movie-club/)

## FRIDAY

## PAPER RECYCLING

Paper depot rear of  
Senior Citizens  
Rooms  
Harding Street  
NEWSPAPERS  
MAGAZINES  
PHONE BOOKS



All money raised used  
for local community  
**4224 0226**

### TAI CHI

9am-10am \$10 5267 2028  
Winch Community House, 28 Hesse St

### COMMUNITY FOODBANK

12-2pm 30 Hesse St, Winchelsea  
0417 848 292

### PHONICS WITH ROBOT REG

10.30am (1-3 yrs) 11.30am (3-5 yrs)  
(School terms)  
[www.robotreg.com.au/pages/shae](http://www.robotreg.com.au/pages/shae)

### CHATTY CAFÉ



10.30am-12.30pm, Gold Coin Donation  
Winch Shire Hall, 28 Hesse St, Winchelsea  
5267 2028

### WINCHELSEA HISTORICAL SOCIETY

Friday 10am-3pm  
Hesse St, Winchelsea

### WINCHELSEA SENIOR CITIZENS

Fridays 1.00 pm - 3.00 pm  
36 Harding Street, Winchelsea  
Jean Shinnars 52672263, 0427672263  
[jeanshinnars@gmail.com](mailto:jeanshinnars@gmail.com)

### WINCHELSEA RSL

Winchelsea Men's Shed,  
Hesse St, Winchelsea  
David Loone 0488 165 109

### GEELONG REGIONAL LIBRARY

(MOBILE) 2-5pm  
Old Shire Hall, 28 Hesse Street  
0408384331 (During scheduled stops)

## SATURDAY

### PARKRUN



8am Trebeck Reserve  
Sussex St, Winchelsea  
[www.parkrun.com.au/trebeckreserve/](http://www.parkrun.com.au/trebeckreserve/)

### DIAMOND DOT DAY

Resumes 7 February  
Senior Citizens Centre,  
36 Harding Street Winchelsea  
10 till 4 \$5 entry, \$10 includes lunch  
Tracey 0427500649

### WINCHELSEA LIONS CLUB IGA BBQs

9 -12pm first Sat of month outside IGA.  
Proceeds to IGA Community Chest.

### WINCHELSEA LAND AND RIVERCARE

Citizen Scientists Working Bee  
First Saturday of the month 9am  
Meet at Guye Reserve, Barwon Terrace  
Rod Atone 0428 549318  
Stewart Mathison 0428 672054

### WINCHELSEA STAR PRODUCTION/COFFEE MEETING

9-11am (Last Sat monthly)  
La Hoot Cafe, Main Street  
[www.winchelseastar.org.au](http://www.winchelseastar.org.au)

### WINCHELSEA CROCHET GROUP

1.30pm Every 2nd Saturday \$5  
Winch Community House, 28 Hesse St,  
Vee 0467 219 227

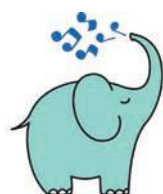
### ST JOHN THE BAPTIST CATHOLIC CHURCH

Mass 6pm each week  
Harding St, Winchelsea 0404598558

### WINCHELSEA COMMUNITY DINNER

6.30pm last Sat monthly, except Nov/Dec  
Hall, Harding St Winchelsea  
Bring plate & gold coin donation if you can

## SUNDAY



**mainly music**  
est. 1990

Fun, Interactive music sessions for  
pre-school children (0-4 y.o.) and  
parents/caregivers

**When:** Mondays from 10 to 11 am  
(runs during school terms)

**Where:** St Thomas' Hall  
25 Barwon Tce.

To Enquire ring: **0407838256**



# Winchelsea Churches

## Winchelsea Uniting Church

0475 777 301  
uca.winchelsea@gmail.com  
Hesse St, Winchelsea 3241  
Services 9.30am Sundays

## St John the Baptist Catholic Church

0404 598 558  
Father Joseph Panackal  
Harding St, Winchelsea 3241  
Mass @ 6pm Sat. Jan. 17, 24, 31

## St Thomas' Anglican Church

0448 687 588  
Rev Christopher Duff  
Barwon Tce, Winchelsea  
Service 10am Sundays



## Thought of the Week

"God is always beside you,  
and you'll find when you smile  
your day will be brighter,  
and each of your burdens  
will seem so much lighter-  
for each time you smile  
you will find it is true.  
Somebody, somewhere  
will smile back at you."

Have a Blessed week.  
John Bader (Christian Pastoral Carer)

## Knuckey's Winchelsea

Ph: 5267 2011

Knuckey's have in stock a complete range of batteries to suit tractor, heavy machinery, cars, utes

The largest range of the best oil for your vehicles—**CASTROL**—  
'when only the best will do'

The largest range of V belts.  
A, B, C, D M Sections  
Bolts and nuts for all occasions  
Steel cut to size

## TIP TRUCK HIRE

- \* **FRONTEND LOADER**
- 4 IN 1 BUCKET**
- \* **DRIVEWAYS**
- LEVELLED OFF**
- \* **RUBBISH REMOVAL**
- \* **GRASS SLASHING**
- & RIDE ON**
- MOWER JOBS**

**VINCE**

**0412 840 704**

All About

## Mowers & Chainsaws

Repairs to all makes and models of ride on mowers, domestic mowers, pumps, chainsaws, brushcutters and small engines.

Trading Hours: Mon - Fri 8am - 5pm Saturday 8am - 12 noon

**5267 2266** Cnr Princes Hwy & Lennox St Winchelsea

www.allaboutmowers.com.au

accounts@allaboutmowers.com.au











## DANCE CLASSES

TAKING ENROLMENTS NOW  
FOR OUR WINCHELSEA STUDIO

PRE-SCHOOLERS - ADULTS  
CONTROLLED CLASS SIZES

JAZZ - THEATRICAL TAP - CLASSICAL BALLET  
HIP-HOP - CONTEMPORARY DANCE

ENROL TODAY

WWW.MELSDANCECENTRAL.COM.AU



# Winchelsea farmers revealed as finalists in The Weekly Times Coles 2025 Farmer of the Year awards



Finalists for The Weekly Times Coles 2025 Farmer of the Year awards have been announced, honouring Australia's best in agriculture across six categories: Beef, Cropping, Dairy, Horticulture, Innovation, and Sheep.

The Weekly Times Coles Farmer of the Year Awards - which have been running for 14 years - recognise Australia's greatest agriculture industry leaders throughout the previous year on three key farming principles: productivity, innovation and sustainability.

This year's finalists are pushing the boundaries of modern farming, transforming efficiency, sustainability and staff satisfaction across the industry, including the multi-generational Candeloro and Ruffo families from Bacchus Marsh, Victoria using groundbreaking AI technology for weed control.

From the finalists, one winner will be chosen in each of the six categories, along with an overall champion to be crowned at an exclusive invitation-only event on Friday, February 13, at the Melbourne Cricket Ground (MCG).

Editor of The Weekly Times James Wagstaff said the extraordinary work being done across Australia by farmers made selecting finalists more challenging than ever. "I continue to be blown away by our Australian farmers and how they rise to the challenge of keeping pace with our fast-evolving world, nailing efficiency, using AI and other emerging technologies across all aspects of operations - from data collection to reducing labour-intensive tasks for staff."

## The Weekly Times Coles 2025 Farmer of the Year Finalists

### Beef Farmer of the Year:

Mactaggart family, Balcolmba Grazing, Duaringa QLD  
Grose family, 3D Genetics, Bukkulla NSW  
Barclay family, Mingawalla Ag, Beeac VIC

### Cropping Farmer of the Year:

Ingold family, John Ingold and Co, Dirnaseer NSW  
Morshead family, Amberley and Co, Yenda NSW  
Thompson family, M&R Agriculture, Minlaton SA

### Dairy Farmer of the Year:

Vagg family, Leongatha South VIC  
Hicks and Jacobs families, Hicks-Jacobs Dairies, Mt Compass  
Ainslie family and Compass Agri, Woodrising Dairies, Cressy Tas

### Innovative Farmer of the Year:


Eather family, Bellevue Pastoral Co., Narrabri NSW  
Bolton family, Oasis Farms, Kununurra WA  
**Wilson family, Murdeduke Agriculture, Winchelsea VIC**

### Sheep Farmer of the Year:

Bell family, Bellevista, Kangaroo Island SA  
Baldwin family, Bundilla Poll Merino, Young NSW  
Snodgrass family, Cudgell Creek Partnership, Young NSW

### Horticulture Farmer of the Year:

Candeloro and Ruffo families, Tripod Farmers, Bacchus Marsh  
Vandenberg family, Timmel Ridge Estate, Gol Gol NSW  
Prichard Family, Cudgen Road Farms, Cudgen NSW



## What's On at the MCN Shed?

### Jan-April 2026

#### Men's Shed

Every Wednesday and Saturday - 9am-Midday (reopens Wed 7<sup>th</sup> Jan)  
Kindling and Wood Shavings - for sale  
Different activities available - contact Kelvin 0414 484 673

#### Women's Shed

Every Friday - 10 am-Midday - Art Class (limited spaces)  
Contact Jeanette 0408 466 122  
BYO Craft and Chat 3<sup>rd</sup> Thursday of the month 7pm  
Feb 19<sup>th</sup>, March 19<sup>th</sup>, April 16<sup>th</sup> - contact Kim 0414 482 893

#### Sustainability Group

'Swap and Share' produce, jars, books, almost anything!  
Nothing to swap? No problem - gold coin donations welcome! 😊  
4<sup>th</sup> Saturday of the month 11am-Midday  
Feb 28<sup>th</sup>, March 28<sup>th</sup>, April 25<sup>th</sup> - contact Sarah 0407 400 593

#### Book Club


1<sup>st</sup> Wednesday of the month - 7.30pm  
Feb 4<sup>th</sup>, March 4<sup>th</sup>, April 1<sup>st</sup> - contact Michaela 0418 370 469

#### MCN monthly meeting

4<sup>th</sup> Wednesday of the month (Feb-Nov)  
7.30pm - Everyone welcome -  
Feb (MCN AGM) 25<sup>th</sup>, March 25<sup>th</sup>, April 22<sup>nd</sup> - contact Kim 0414 482 893

#### Other events- more TBC

Thursday Feb 25<sup>th</sup> MCN AGM - yearly membership renewals due - \$40 -  
a renewal form will be sent to all current members  
Tuesday March 3<sup>rd</sup> - Women's Shed 'International Women's Day' 7 pm and art show. Cost TBC





## WINCHELSEA CONCRETING

• Driveways • Sheds • Decorative Concrete • Raft Slabs

**Robert Murphy**

☎ 0438 235 237

✉ winchelseaconcreting@outlook.com

## DownRyte Excavations



- Excavations
- Drilling and Piling
- Rock Placement
- Tree and Stump Removal

Sean Hunwick

Mobile: 0409 447 288  
Email: downryte@activ8.net.au

## *direct* TEMPORARY FENCING

FOR HIRE - SUPPLIED & ERECTED - 7 DAYS  
GEELONG - BELLARINE - COLAC - SURF COAST  
PHONE CAM 0417 310 800

# SOUTH-WEST — PAINTING — GROUP

**Contact us:**



0431 719 218



[www.southwestpaintinggroup.com.au](http://www.southwestpaintinggroup.com.au)



[matt@southwestpainting.com.au](mailto:matt@southwestpainting.com.au)

## We specialise in:

- New Homes
- Texture Feature Finishes
- New and Old Cabinetry Coatings
- Commercial Projects
- Maintenance Work
- Residential Work
- Wallpapering
- Pre-Sale Painting
- Timber Decking Rejuvenations

## M & L DRAYTON

### PLUMBING SERVICES

REG No 24356 C/A No C02594

- Domestic and Rural Plumbing
- Roofing
- Sewerage & Septic
- LPG & Natural Gas Connections
- Motorised Drain Cleaning
- Backhoe Hire

**Phone Mark 5288 7244**

PO BOX 98 WINCHELSEA 3241

**Mobile 0428 520 142**



DRIVEWAYS, CARPORTS, CROSSOVERS,  
FOOTPATHS, SHED SLABS, STAIRS  
HOUSE SLABS, EXPOSED, SEALING & MORE

CONTACT ALISTER NOW FOR A QUOTE

☎ 0411871950

✉ [AMACONCRETING1@GMAIL.COM](mailto:AMACONCRETING1@GMAIL.COM)





## Ross River virus in Anglesea

Surf Coast Shire

Council monitoring detects Ross River virus in mosquitoes at Anglesea

Surf Coast Shire Council is encouraging people to take special care preventing mosquito bites following detection of Ross River virus in mosquitoes trapped at Anglesea.

The specimens were captured as part of Council's routine trapping and testing program.

Ground-based larvicide treatment of mosquito breeding areas will continue in line with Victorian Department of Health advice.

Ross River virus has also been detected in mosquitoes trapped in Geelong and Gippsland during recent weeks.

People are urged to:

- Remove stagnant water which provides breeding areas for mosquitoes around homes, in places like gutters, bird baths, ponds, old tyres, pot plants, buckets and toys.
- Wear light-coloured, loose-fitting clothing outdoors.
- Use insect repellent containing DEET or Picaridin on exposed skin.
- Help protect young children. Apply repellent to clothing rather than directly to skin.
- Avoid outdoor activity at dawn and dusk, when mosquitoes are most active.

People can learn more and find tips on staying safe via [surfcoast.vic.gov.au/mosquitoes](http://surfcoast.vic.gov.au/mosquitoes)

"Simple precautions can go a long way to help keep us safe from mozzies and the diseases they can carry," Cr Mike Bodsworth said. "We love being outdoors this time of year, particularly during the summer evenings, but please take care and cover up including arms and legs, and use repellent with DEET or Picaridin," he said.

Symptoms of Ross River virus can include fever, joint inflammation and pain, rash, fatigue and muscle aches. People can find more information via [betterhealth.vic.gov.au](http://betterhealth.vic.gov.au)

Council's mosquito monitoring program includes trapping in problem areas, with specimens sent for laboratory analysis which identifies mosquito types and any diseases being carried.

## What to do if you come across a snake in the great outdoors!!

Benny, Snake Catcher Colac

- **Stay Calm:** It's natural to be startled, but panicking can lead to erratic movements that may provoke the snake.
- **Observe from a Distance:** Give the snake space to move away on its own. Sudden movements can make the snake feel threatened.
- **Be Aware of Your Surroundings:** When hiking or in areas where snakes may be present, stay on designated trails, wear appropriate footwear, and be mindful of where you step.



### If Bitten by a Snake:

Immediately call for emergency medical help (000 in Australia) and perform first aid. (Snake Bite Bandage)

Snakes are protected under the wildlife act of 1975 it is illegal to capture, harm or kill snakes.

Do you have an unwanted visitor? Give Benny the Snake Catcher Colac a call 0498-063-229

## Professor Henry Brodaty AO named 2026 Senior Australian of the Year

Dementia Australia

Dementia Australia congratulates its Honorary Medical Advisor Scientia Professor Henry Brodaty AO on being named the 2026 Senior Australian of the Year.

Dementia Australia CEO Professor Tanya Buchanan said the national honour is a well-deserved recognition of Professor Brodaty's extraordinary lifetime contribution to dementia research, clinical care, advocacy and his unwavering commitment to supporting people living with dementia, their families and carers. "His contributions to the nation's health are immeasurable and certainly deserving of such a prestigious honour."

"Professor Brodaty was the founder and former President of Alzheimer's Australia NSW and President of Alzheimer's Australia, which is now Dementia Australia," Professor Buchanan said. "He founded the Dementia Australia Research Foundation and chaired its Board from 1995 to 2016. He has also provided global leadership as a co-founder of Alzheimer's Disease International where he continues as honorary vice-president.

"We are deeply grateful for Henry's enduring commitment to dementia care and research and congratulate him on this greatly deserved recognition."

If this story has prompted any questions or concerns, please call the National Dementia Helpline 1800 100 500 (24 hours a day, seven days a week) or visit [dementia.org.au](http://dementia.org.au)



# BUSINESS PHONE DIRECTORY

## ACCOUNTANT

STS Accounting 5267 2673

## AGRICULTURAL

Southern Grain 5267 2351

## ANTIQUES

Antique Repairs 0428 672 704

## AUTOMOTIVES

SJR Automotive 0423 413 829

Winchelsea Auto 5267 3001

## BANK

Bendigo Bank 5267 3189

## BUILDERS

Alford Built 0408 583 362

Lupton Builders 0438 840 104

MGT Building 0409 433 687

## CAFE

Café La Hoot 0407 528 999

## CHIROPRACTOR

One Body 5267 2240

## CHURCHES

Anglican 0477 672 042

Catholic 0404 598 558

Uniting 0475 777 301

## CLUBS

Girl Guides 0448 672 630

Golf 5267 2660

Lions 4224 0226

Movie 0409 672 054

Probus 0417 467 927

Scouts 0409 330 147

## COMMUNITY

Community House 5267 2028

Foodbank 0417 848 292

Mainly Music 0407 838 256

Men's Shed 0407 839 139

Playgroup 0432 019 944

RSL 0488 165 109

Senior Citizens 0427 672 263

Toy Library 5267 2028

## CONCRETERS

AMA Concreting 0411 871 950

Vince Concreter 0412 840 704

Winchelsea Concreting 0438 235 237

## DANCE

Mel's Dance 0400 874 338

## DENTAL

Winchelsea Dental 5267 2071

## ELECTRICIAN

Green Lead Electrical 0467 097 101

## EMERGENCY

Police 5267 2025

SES 132 500

## ENTERTAINMENT

COPACC 5232 9418

## EXCAVATORS

DownRyte Excavations 0409 447 288

Trenches & Holes 0427 672 945

## FENCING

Direct Temporary 0417 310 800

## FRAMER

R&K Creative Framing 5267 2192

## FUNERAL

Tuckers Funeral 5221 4788

## FURNITURE

Worpel Custom 0439 013 145

## GYM

Sunny Gym 0401 417 387

## HEALTH SERVICES

Hesse Rural Health 5257 1200

Winchelsea Medical 5292 8028

## HIRE

Colac Hire 5232 1177

Tip Truck Hire 0412 840 704

## LAWYER

Wightons Lawyers 5221 8777

## MOWERS

All About Mowers 5267 2266

## NURSERIES

Oz Trees Nursery 5233 6280

## OSTEOPATHICS

Dr Kale Mazurek 0417 114 617

Winchelsea Osteo 5267 2948

## PAINTER

South-West Painting 0431 719 218

## PLUMBERS

M&L Drayton 0428 520 142

M&B Wood 0418 319 357

Simco Plumbing 0400 643 976

## QUARRIES

RAK Davis & Sons 5267 2094

## REAL ESTATE

Charles Stewart 5231 5400

HF Richardson 5229 8017

## SCHOOL

Primary School 5267 2134

## SHIRE

Surfcoast Shire 5261 0600

## SPORTS

Park Run 0408 102 802

Pickleball 0438 672 197

## STEELWORK

MRP Steelworx 0418 672 234

## STORAGE

Storage King 5267 3116

## SUPERMARKET

IGA 5267 2676

## TAXIS

Surfcoast Taxi 0408 325 992

Winchelsea Taxi 0429 672 888

## VET

Colac Vet 5232 1792

Moriac Vet 0447 781 089

## WATER

Water Supply Specialists 5231 1861

Wazza's Water Cartage 0428 877 260

## OZ TREES NURSERY & TREE PLANTING SERVICES

- Affordable seedlings—over 200 species
  - Complete plantation service—farm forestry, shelter, aesthetics
  - Deep ripping & mound ploughing. Rotary bed forming
  - Our experienced staff will help you select species for your site conditions and needs
- Also available—tree planting tools, milk cartons, plastic tree guards & bamboo stakes



569 Warrowie Rd. Colac  
P: 5233 6280 F: 5233 6393  
E: info@oztrees.com.au  
W: www.oztrees.com.au  
Open Monday—Friday  
9am—4:30pm

Phone OzTrees for professional advice,

## Water Delivery



Stainless Tanker Up to 22,000 ltr loads  
Barwon Water Registered

Domestic & Rural Water Supplies

Call Wazza  
Mob: 0428 877 260  
Email: wazza@wazzas.com.au Web: wazzaswater.com

52672192 **R & K Creative Framing**  
for all your framing needs

free quotes  
pension discount  
specialist in Age &  
Disability Modifications

Ray & Kim Jansen  
10 Witcombe st  
Winchelsea 3241  
0414672192

Ray The Home  
Maintenance **HANDYMAN**  
abn 47928623462

## Antique Repairs

By Doug Burns est. 1976

- All Furniture
- French polishing
- Carving
- Veneering
- Wood Turning
- Porcelain



Unusual Requests Welcome

180 Barwon Terrace, Winchelsea

**0428 672 704**



## Services & Activities In Winchelsea

<b>VLIN TRAIN SERVICES</b> <b>TO MELBOURNE:</b> Mon - Fri 06.41 (coach) 08.07 11.10 14.04 16.58 19.21 Sat - Sun 08.27 10.27 14.04 16.58 19.17 <b>TO WARRNAMBOOL:</b> Mon - Fri 08.58 11.51 14.46 17.28 (coach) 18.42 20.52 Sat - Sun 09.44 11.41 14.46 18.38 20.38	<b>SURF COAST MOBILE LIBRARY</b> <b>Cnr Princes Highway &amp; Hesse St, Fridays, 2pm-5pm</b> Parked in Hesse Street (outside Shire Hall) Fridays 2:00 and 5:00pm unless it is a Public Holiday.	<b>WINCHELSEA GIRL GUIDES</b>  All girls 6yrs-15yrs Welcome! ondays 4.30pm-6pm (school terms) Catholic Church Hall, Harding St Winchelsea <i>Fun, friendship, and adventure. Teamwork, leadership skills, achieve goals, improve communities and grow in confidence.</i> 3 FREE sessions to come along and try. Yvonne 0448 672 630 or Lily 0428 936 441
 <b>COUNTRY WOMEN'S ASSOCIATION</b> 7pm second Wednesday of month Winchelsea Senior Citizens' Hall 36 Harding Street Winchelsea	<b>WINCHELSEA PLAYGROUP</b> Every second Thursday 10am-12pm St Thomas Anglican Church Hall cnr Barwon Tce and Hopkins St, Winchelsea Contact: Danni Menzies 0432019944 winchelseaplaygroup@gmail.com Facebook - Winchelsea Playgroup 2019 <b>New families welcome</b>	 <b>1ST MODDAWARRE SCOUT GROUP</b> Modewarre Hall Joeys 5-8yo 5-6pm (school term) Scouts 11-14yo 6:30-8:30pm (school term) Venturers -15-18yo are hosted by Torquay or Highton Units <b>Contact: Marie McPadden 0409330147</b>
 Winchelsea and District <b>COMBINED PROBUS CLUB</b> Senior Citizens Rooms, New members always welcome. Enquiries Lorraine 0417 467 927	<b>WINCHELSEA TRANSFER STATION</b> <b>55 Cressy Road, Winchelsea</b> Tuesday 2pm-4pm Saturday 1.30-3.30pm Thursday 2pm-4pm Sunday 9.30-12.30pm Closed Christmas Day, but open on other public holidays. www.surfcoast.vic.gov.au/disposalsites	 Nationally accredited training to help our community. Pop in to meet your crew <b>Wednesdays 7:30pm</b>  <b>Winchelsea Unit</b> 325 Mousley Drive <b>132 500</b>



**Café La Hoot**

# have you tried 'owl' coffee?

1 willis st [cafelahoot@gmail.com](mailto:cafelahoot@gmail.com) 0407 528 999

# TRENCHES & HOLES PTY LTD.

GENERAL EARTHWORKS  
DRIVEWAYS  
TRENCHER  
KANGA

EXCAVATOR (3.5T & 6T)  
TIPPER TRUCK  
ROCK BREAKER  
POST HOLES & FOOTINGS

## PHILLIP ROBERTSON

# PH. 0427 672 945

A.B.N. 74006896898

# MRP Steelworx

Matthew Partridge  
p 0418 672 334  
e [mrpsteelworx@yahoo.com.au](mailto:mrpsteelworx@yahoo.com.au)

### Welding Service

- Onsite welding
- Farm maintenance
- Farm machinery & equipment repairs
- Cattle & sheep yards
- Custom built trailers
- Supply & install gates





# WANTED

The Winchelsea Community House is seeking a  
**Dance/Acro/Gymnastics Instructor**

Email: [shirehall@winchhouse.org.au](mailto:shirehall@winchhouse.org.au) or call 03 52672028 for more information.




## 'NEW TO TYPE 2' DIABETES PROGRAM

This 4-week program will empower you with the knowledge, tools, and confidence to live well with diabetes. This program is for anyone diagnosed with, or at risk of, diabetes and is run by our experienced multidisciplinary team of health professionals.

### WHAT YOU WILL LEARN

Our sessions cover all aspects of effective self-management, including:

- Understanding diabetes and treatment options
- Food choices and meal planning
- Exercise and movement
- Better sleep and stress management
- Optional free sensor trial or new blood glucose meter.
- The diabetes cycle of care

### COST \$6 A SESSION

If you or someone you know would benefit from this program, please contact:

[communityintake@hesse.vic.gov.au](mailto:communityintake@hesse.vic.gov.au) (03) 5267 1248



5234 6585 0417 385 984  
 For all your domestic & stock water.  
 Also available for road and civil construction  
 Local owned and operated.



# SOUTHERN GRAIN STORAGE PTY. LTD.

AG SUPPLIES FERTILISER GRAIN STORAGE SEED CLEANING  
**(03) 5267 2351**



## WORPEL CUSTOM FURNITURE

- BESPOKE TIMBER FURNITURE
- TIMBER VANITIES
- BARNDOORS
- KITCHEN, BATHROOM & WARDROBE JOINERY
- REPAIRS & RESTORATION

**0439013145**  
[worpelsam@yahoo.com.au](mailto:worpelsam@yahoo.com.au)  
 25A Alsop Drive Winchelsea



## CONCRETER

- \* DRIVEWAYS
- \* FOOTPATHS
- \* KERB & CHANNEL
- \* GARAGES & SHED SLABS
- \* STEPS
- \* WHEELCHAIR RAMPS
- \* VERANDAHS
- \* PATIO AREAS
- \* PLAIN OR COLOURED CONCRETE
- \* CONCRETE CUTTING & REMOVAL

**VINCE**  
**0412 840 704**



## Winchelsea Supermarket

Trading Hours  
**Monday to Saturday**  
 8.30am to 7.30pm  
**Sunday**  
 10am to 7pm  
**Ph: 5267 2676**  
 29 Main St, Winchelsea








**SPECIALISING IN QUALITY**

• NEW HOMES	• EXTENSIONS	• RENOVATIONS
• ALTERATIONS	• DECKS	• PERGOLAS
• CARPORTS	• VERANDAHS	• RE-GLADS
• BATHROOMS	• WINDOW REPLACEMENTS	

**Leigh Lupton**  
0438 840 104

LEIGHLUPTON17@GMAIL.COM

Est. 1977



*Need tax advice...?*

## Business & SMSF Tax Planning Specialists

**Winchelsea**  
5267 2673

**Torquay**  
5261 2262

[surftax.com.au](http://surftax.com.au)

## Winchelsea Taxis is now Surfcoast Taxis

Our fleet of vehicles are growing to all late models and we are covering an extended area including Winchelsea, Colac, Bannockburn, Inverleigh, Great Ocean Road and Geelong.

We have a fleet of 10 seater Maxi Vans, all with capacity to carry wheelchairs.

**Surfcoast Taxis Pty Ltd**  
**All Bookings: 0408 325 992**  
**Fax: 5267 2699**  
**Email: [bannotaxis@gmail.com](mailto:bannotaxis@gmail.com)**  
 (Admin or Stan 0429 672 888)  
 66A Batson Street  
 Winchelsea 3241





Accounts NDIS provider. TAC, DVA etc

NDIS provider number 4050001044

NDIS provider number 4050001048



**Moriac Veterinary Clinic**

**0447 781 089**

PHONE 24 HOURS

784 Hendy Main Road Moriac

[info@moriacvet.com](mailto:info@moriacvet.com)

[www.moriacvetclinic.com.au](http://www.moriacvetclinic.com.au)

**HOURS // Monday - Friday: 8am - 5pm**

- Domestic and Commercial hire equipment • Industrial welding gas
- Digging and Earthmoving equipment • New trailers and trailer repairs
- Firewood • Stockists of Royal Oil Lubricants products
- LPG for domestic and commercial requirements

Give Chris and the Team a call on **5232 1177** or email [info@colachire.com.au](mailto:info@colachire.com.au)

[www.colachire.com.au](http://www.colachire.com.au)

101 Wallace St Colac 3250









## Winchelsea Dental Practice

### NEW OPENING HOURS

8am - 6.30pm Monday & Tuesday  
8.30am - 6.30pm Wednesday  
8.30am - 5pm Thursday  
(Friday emergencies call 5267 2071)

Find us at 21 Hesse St  
Call 5267 2071 or book online  
[www.winchelseadental.com.au](http://www.winchelseadental.com.au)

## SIMCO PLUMBING SERVICE

Domestic - Commercial - Rural

# 0400 643 976

- All general Plumbing and Gasfitting • Water tanks and Pumps
- Renovations and Extensions • Hot water and Heat pump
- Split system and Wood heaters • Roof and Gutter
- Septic and Treatment plants • Excavation, Bobcat and Tipper
- Driveways and Earthworks
- Blocked drains and CCTV Inspection

Simon McGillivray

Lic: 109610 Free Quotes, Fast & Friendly Service



Life's busy. Let us help you.

### Contact us today

We can help you with:

Buying your first or next family home

Saving for your first home

Residential Investment Lending

Refinancing from your current lender

Home loan reviews

Pre-approvals

With extensive banking experience and financial expertise, we'll help bring your financial goals to life.



Josie Kavenagh  
0409 564 192



Julie Dunkley  
0466 217 889

**Bendigo Bank**

Community Bank  
Winchelsea and District

Green Lead Electrical  
Connecting you to a greener future  
REC 23618

0467 097 101



## Servicing Geelong & the Surf Coast

Specialising in all residential electrical work including:

- Switch board & lighting upgrades
- Outdoor lighting
- Electrical safety checks
- Energy efficient LED lighting
- Ceiling sweep fans & ventilation
- Energy saving advice

Phone Martin Wilkinson:

**0467 097 101**

[greenlead@outlook.com](mailto:greenlead@outlook.com)

1132268-CG18-14

## NATURAL GAS CONNECTIONS

### M. & L DRAYTON PLUMBING SERVICES

YOUR LOCAL LICENSED

- PLUMBERS (24356)
- GAS FITTERS
- GAS CONVERTERS
- CARBON MONOXIDE TESTING

**MARK 0428 520 142**





45 Anderson Street, Winchelsea 3241 Tel 5267 2660 winchelseagolf.com.au

# Winchelsea Golf Club



## Rachel Boddington

### 28/1/25 - Mid Week/Weekly Stableford 18 Players.

1st - Blair Cartwright (13) 44 points  
 2nd - Evan Partridge (21) 41 points  
 BDL - Stephen Harvey (16) 40 points  
 BDL - Andrew MacDonald (27) 39 points  
 BDL - Greg Rigby (24) 37 points  
 NTP (6th/15th) - Max Bubb

### 28/1/25 - Mid Week Ladies Results Stableford NTP 2nd hole

Winner: Lesley Mathison 40 pts  
 R/Up: Carol Stanesby 38 Pts CB Sue Cuthbert  
 NTP: Sue Cuthbert

### Saturday 31/1/26 The Opening of the Greens Mixed Pinehurst & Men's Stableford 9 Mixed Pairs and 9 Stableford players

#### Pinehurst:

1st - Di Bartel/Dennis Chappell 82 - 14.63 - 67.27  
 2nd - Tara Steward/Cam Parke 78 - 9.38 - 68.62

#### Stableford:

1st - Leigh Howard (15) 36 points C/B  
 2nd - Tom Shaw (16) 36 points C/B  
 BDL - Wayne Lawes (17) 34 points  
 NTP (2nd/11th) - Max Bubb  
 Golden Hole (17th) - Wayne Lawes



Saturday Winners Di Bartel and Dennis Chappell

### COMING UP:

Wednesday 4th February - Weekly Stableford  
 Next Saturday 7th February - Working Bee (Alan Read Memorial ARM) followed by a round of Stableford. Course will be closed until 12.30pm for the working bee. Sorry for any inconvenience.

### VALE: Dennis Waterfall

A much loved and respected member of the club. Dennis was our Vets representative and always very active in the club. Most often seen cooking the BBQ, organising afternoon tea and raffles and dishing out a serve of lip from behind the bar. Dennis and his humour will be missed around the clubhouse.

Winchelsea Tennis Club 21 Armytage St Winchelsea  
<https://www.facebook.com/groups/770786371589798>

# Winchelsea Tennis Club

## Fletcher Allen

### Saturday Superstars – Round 11 A Fresh Start to 2026!

Winchelsea TC kicked off 2026 with plenty of promise, with both teams showing fight and setting clear goals for the season ahead

#### SECTION 7 MIXED

Away at Newcomb TC against 2nd-placed Wandana Heights White - a possible grand final preview?

Jo and Kurt opened strongly with a 6-3 win, while Adri and Scott fell 1-6.

Jo and Adri dominated the ladies doubles 6-0, but the men went down 2-6.

Jo and Scott couldn't finish strong (1-6), before Adri and Kurt closed well with a 6-3 win.

#### Result: 3 sets all, 22-24 games

MVP: Kurt - edging out Jo and Adri on games won.  
 Season Goal: Win the grand final. This team has shown they can beat anyone and will bounce back 100%.

#### SECTION 1 MIXED

At home, Section 1 claimed their second win of the season - a big step forward.

Matt and Emily started with a tight 7-6 tiebreak win, followed by Fletch and Lesley taking another close one 7-5.



After a narrow 5-7 loss in the ladies doubles, Matt and Fletch responded with a 6-3 win.

Fletch and Emily sealed the win 6-3, despite Matt and Lesley going down 3-6.

#### Result: 4-2 sets, 34-30 games

MVP: Fletcher - unbeaten on the day, leading with consistency and determination.

Season Goals: Snag 1-2 more wins and avoid the bottom spot - a well-earned finish for a team that's battled hard all season.





**Located at 36 Main Street, Winchelsea 3241**

For any enquires or bookings please contact the clinic on 5292 8028.  
Or visit our website: [www.winchmc.com.au](http://www.winchmc.com.au)

Opening Hours:

Monday - Friday 8:00am - 5:00pm

(Monday Evening Clinics available and selected Saturdays)



Our clinic accepts online bookings via the app called HotDoc.  
Download the app on the App Store or Google Play or head to our website.



**17 Alsop Drive**

- ❑ LOG BOOK SERVICE
- ❑ AUTO ELECTRICAL
- ❑ TOWING
- ❑ AIR CONDITIONING
- ❑ CLUTCH & BRAKES
- ❑ TYRES
- ❑ WHEEL ALIGNMENT
- ❑ BATTERIES

**CAR, TRUCK REPAIRS  
& Roadworthys**

**PH: 5267 3001**

**Mob: 0417 137 457**



**CARTAGE  
CONTRACTORS**

**WINCHELSEA**

**SUPPLIER OF ALL QUARRY MATERIALS, TRUCK HIRE**

**CARTAGE OF GRAIN, LIME, GYPSUM & SUPER**

**LANDSCAPE & GARDEN SUPPLIES**

**56 WILLIS ST, WINCHELSEA**

**Ph – 5267 2094**

**Ryan – 0438 672 281**

**email: [rakdavissons@gmail.com](mailto:rakdavissons@gmail.com)**



**SIMPLE STORAGE SOLUTIONS**

- Personal & Business Storage
- Boat, Caravan & Vehicle Storage
- High Security Premises
- Individually Alarmed Units
- Electric Gate Access
- 7 Day Access & CCTV

**YOUR STORAGE PROBLEMS SOLVED**

**5267 3116**

**6 ALSOP DRIVE, WINCHELSEA 3241**

**Wightons Lawyers**

Dispute Resolution & Litigation  
Debt Collection  
Property Law  
Wills & Estates  
Powers of Attorney  
Business Law  
Family Law  
By appointment only

22 Willis Street, Winchelsea  
ph. 5221 8777

[www.wightons.com.au](http://www.wightons.com.au)



**Generations of Care  
and Compassion.**

**Tuckers**  
Funeral & Bereavement Service  
... for a life worth celebrating



AFDA Member

PH: 5221 4788

[www.tuckers.com.au](http://www.tuckers.com.au)





45 Hesse Street, Winchelsea, VIC (03) 5267 2241 winchelsea.bowls.com.au

# Winchelsea Bowls Club

Julie Johnson



## Bowls Shield Winners

Paul Sorensen, Kevin McDonald, Lawrie Davie, Caroline Wojtowicz  
Ross Erwin, Pip Ward, Roxy Ryder, Angela Littler, Marcia Brandenburg, Geoff Orchard,  
David Littler, Ian Holmes.

Well, what a couple of unusual weeks we have had to draw the season to a conclusion. Cancellation of games, unbearable heat for practice and Club events. Hopefully we can get to the Finals without injuries and a bit more consistent practice.

## MIDWEEK PENNANT RESULTS

Rd 13 Cancelled

Final round to be played 3 February. Both Divisions 1st position.

## SATURDAY PENNANT RESULTS

Rd 12 Cancelled

Rd 13

**Division 1 A** were def by Camperdown Magpies away winning 2/4 rinks, 88 shots to 92 shots.

**Division 1 B** were def by Colac Central away winning 1/4 rinks, 83 shots to 109 shots.

**Division 4** def Cressy at home winning 2/3 rinks, 88 shots to 37 shots.

All teams except 1B will play finals. 7 February will be the final home and away game.

## AROUND THE GREEN

Congratulations to both Pip Ward and Rhys Jeffs who performed very creditably at the Champion of Champions. Pip was narrowly defeated by the eventual Ladies winner Hayley Murnane, and Rhys was Runner Up by one shot to Leigh McIlvenny.

On Wednesday 28 January 12 Winchelsea players were very happy to win a 4 week competition and the Inverleigh Bowls Club Country Night Challenge Shield.

Great effort all and a big commitment over the weeks of play. Club events are all at different stages of completion and results will all be published together when they eventually are played.

**BAREFOOT BOWLS** commences Friday the 6th of February and will run for 4 consecutive weeks. Once again live music with Brooke, children's activity area, free sausage sizzle, Mexican Cantina and Mr Whippy. There are plenty of bowls at the club and help will be available, hope to see you there.

Let's all finish on a win in the home and away next weekend, may the bowls be with you!!







**5234 6585 0417 385 984**  
For all your septic tank, grease traps  
and interceptor pits servicing.  
Locally owned and operated



**Winchelsea Branch**  
By Appointment:  
Monday 2-5pm Thursday 11-3pm  
40 Main Street Winchelsea  
5232 1792 [www.colacvet.com.au](http://www.colacvet.com.au)



74 Dennis Street, Colac  
5231 1861



**Water Supply Specialists**

**WATER SOLUTIONS**

ALL THINGS WATER:

• PUMPS • PIPES  
• FITTINGS • TANKS  
• POOL CHEMICALS  
• IRRIGATION  
• WATER PURIFICATION  
• SOLAR • REPAIR

**Chat with your Councillor**

**Tony Phelps**

1st Thursday of the month  
10am-12pm  
Winchelsea Shire Hall  
co-working/study space

# WINCHELSEA Osteopathic Clinic

Back pain • Neck pain • Sporting injuries • Headaches • Shoulder pain • Sciatica

Ph: 5267 2948

34 Main Street, Winchelsea (within *The Exchange*)

Book online at:

[www.winchelseaosteopathicclinic.com.au](http://www.winchelseaosteopathicclinic.com.au)

# MGT BUILDING & CONSTRUCTION

NEW HOMES | EXTENSIONS | RENOVATIONS

Ph: 0409 433 687



A family business operating for more than 138 years, HF Richardson services an extensive client base throughout the greater Winchelsea area. Our success is built on a long history of innovation and while we've moved with the times, our basic values of honesty, trust and integrity have remained.



**Eric Foster**  
**0429 499 924**  
Sales Executive



**Ken McDonald**  
**0418 524 150**  
Licensed Estate Agent

**Residential | Rural Lifestyle  
Agricultural Farms**

**HF RICHARDSON**

**PROPERTY**

[www.hfrichardson.com.au](http://www.hfrichardson.com.au)

**HESSE  
RURAL  
HEALTH**



Acute Care+  
Urgent Care+  
Residential Aged Care+  
Community Nursing  
Dietetics  
Physiotherapy  
Occupational Therapy

Diabetes Education  
Social Support Groups  
Counselling  
Home Care  
Health Promotion  
\* services from Winchelsea only

[www.hesseruralhealth.com.au](http://www.hesseruralhealth.com.au)  
P: (03) 5267 1200 E: [reception@hesse.vic.gov.au](mailto:reception@hesse.vic.gov.au)





# Winchelsea Football Netball Club Inc

Hopkins St, Winchelsea winchelseafnc@hotmail.com

## Blues News

Janet Fletcher

Welcome to Blue's news where there is a lot of activity behind the scenes getting ready for the 2026 season in both Football & Netball. Netball tryouts continue to go really well judging by the turnout on the courts last Saturday morning where it was hot work out there playing – water bottles everywhere! Good work everyone.

The Football pre season is also in full swing – having to pick the training venue appropriately in the summer heat, Senior Coach Ben Moloney is putting subtle changes in practice around the Club. There are meetings of all sorts within the Club, with the League, sponsors and players as well – it's a busy time.

The "off season" is itself a special time of hope & expectations to move forward, become stronger and progress as a Club, both on and off the field.

The Club's Catering Team also works 12 months of the year, February and November in particular are very busy months. The Catering Team are also looking forward to the season opening of the Winchelsea Football & Netball Club's BLUE'S BISTRO in early April.

Another important date to be announced shortly is the Club's Season Launch for our special 150th celebration season.

Saturday 27th of June 2026 will be an enormous day for the Winchelsea Blues..... Round 11 will see the Blues host North

### POSITION VACANT, W.F.N.C. CANTEEN

**The Winchelsea Football & Netball Club is looking for a Manager/s for the 2026 Season, to oversee our Canteen on home game days. This is a paid position.**

9 Home Games ~ Rounds 1, 2, 3, 4, 8, 11, 14, 16, & 18.  
Rounds 2, 3, & potentially 4 will be Twilight games.

A roster will be in place for Footballers and Netballers, and Catering team to assist.

**Preparing and operating Canteen duties will include:**

- Knowledge and operation of a deep fryer and being familiar with the part it plays on game days is especially important.
- Foods include chips, dim sims, potato cakes, chiko rolls, chicken schnitzels.
- Assembling of ham/chicken salad rolls.
- Monitoring of pies, pasties and sausage rolls in a pie warmer.
- Hot dogs, steamed dim sims, gravy for chips and gravy, beef and gravy rolls.
- Chicken schnitzel burgers.

All ordering will be done with consultation,  
no front of house required, no money handling required.

**All interested enquiries  
Janet Fletcher 0400 783 408**

Thank you to those who have responded. The advertisement will run for another 2 weeks and the an announcement will be made by the Winchelsea Blues at that time.



Geelong at Eastern Reserve with lots being planned for the day, as the Club chooses this date to hold special 150 years celebrations. Please lock in this date to come and share in the celebrations.

### GO BLUES!!

#### CONDOLENCES:

All at the Winchelsea Football & Netball Club wish to offer their sincere condolences to Joan Caldwell, her families and friends with the sad news of John's passing last week. A lovely man, true gentleman, former player and friend of the Winchelsea Football Club.

A life well lived, he will be sadly missed.

**JUNIOR SIGN-UP DAY**

**10am Sunday Feb 15th**  
**@ Eastern Reserve**

**Junior Football**  
**Junior Netball**

**Auskick**  
**Net Set Go**

**On-field activities**  
**Meet the coaches**

**Boot swap**







## Neurologically-Focused, Holistic Family Health Care

Get yours and your families health back naturally  
Empower yourselves for life-long health & wellness  
Perform and play at your absolute best





www.onebodychiropractic.com.au

03 52672240 21 Hesse St Winchelsea

Here for your Vitality...

**For all your livestock, rural real estate and property management needs, speak to the Charles Stewart team**

<p><b>Livestock</b></p> <p>Peter McConachy 0408 522 878          Jamie McConachy 0418 522 879          Matthew Nelson 0428 315 400          Gerard Bohan 0400 005 541          Dougal McIntyre 0439 575 612</p>	<p><b>Real Estate</b></p> <p>Michael Stewart 0418 520 467          Peter McConachy 0408 522 878          Andrew Rice 0457 105 500          Josh Lamanna 0417 586 032          Daryl Osborne 0419 388 341          Anthony McDonald 0418 593 597</p>
---	---

**Property Management - 5231 5011**  
 Sarah Higgs Nathan Gray Daniella De Rooy






15 Murrell Street, Winchelsea 5231 5400



*New Homes, Renovations, Extensions,  
Bathrooms, Decks & Pergolas*

 **0408 583 362**  
 [stephen@alfordbuilt.com.au](mailto:stephen@alfordbuilt.com.au)



**REGISTERED**  
Building Practitioner



**Call Matt - 0418 319 357**  
[mbwoodplumbing.au](http://mbwoodplumbing.au)

**Servicing Winchelsea & surrounds**

- General maintenance & blocked drains
- Gas fitting & hot water service upgrades
- New homes & renovations

**Scott McDonald**  
**0423 413 829**



**S.J.R AUTOMOTIVE**  
ABN 942 493 646 39  
 13 ALSOP DRIVE, WINCHELSEA VIC 3241

**BOXING STRENGTH TRAINING KIDS KUNG FU BOXING STRENGTH**

**SUNNY GYM**  
 GYM BUT JOYFUL



**FITNESS AND MARTIAL ARTS  
IN WINCHELSEA**

SUNNY GYM OFFERS SMALL GROUP  
CLASSES IN PERSONAL TRAINING,  
BOXING AND KUNG FU.

[sunnygym.com.au](http://sunnygym.com.au)  
**0401417387**

**BOXING STRENGTH TRAINING KIDS KUNG FU BOXING STRENGTH**





# parkrun 100



**Saturday 31 January 2026**

**Trebeck Reserve, Winchelsea**  
[www.parkrun.com.au](http://www.parkrun.com.au)

50 participants and nine volunteers celebrated the 100th event of Trebeck Reserve parkrun this week. Black being the colour of 100 milestone T-shirts, it was logical to have a black theme for our celebration. So there were Black balloons, Black jelly beans, Black grapes, Black lollies, Black Pepsi, Black clothing and music by the Black Sorrows.

Congratulations to Donna Loone who completed her 100th parkrun, dressed in Black.

Nine volunteers made the event possible. Thanks to Alex Tigani, Liz Bennett, Maureen Gunson, Dianna Vesey, Ann Jones, Kristen Czerkiewicz, Don Smith, Kate McInnes and Neil McInnes.

We had visitors from Studley Park, Torquay and You Yangs.

Seven people completed their best time for Trebeck Reserve. Congratulations to Kirsten Lieshout, Phil Streeter, Alex Tigani, Leandra Kubacki, Hamish Kelly, In Wakeman and Bronwyn Walker.

Full details of this week's results can be found at [trebeckreserveparkrun.com.au/results](http://trebeckreserveparkrun.com.au/results) or check out our Facebook page for more photos.

If you wish to join us any Saturday morning as a walker, runner or volunteer please complete the simple online registration at [parkrun.com.au/register](http://parkrun.com.au/register), this is free, only needs to be done once and can be used at any of the 5,000 plus parkrun events worldwide.

To volunteer please send an email to [trebeckreserve@parkrun.com](mailto:trebeckreserve@parkrun.com).



## DEFIBRILLATORS IN WINCHELSEA

### Accessible to the public 24 hours a day

Winchelsea Lions Club has compiled a list of public access defibrillators in Winchelsea. If you know others, please contact Linda Carter 0439 817 263.

- **Ambulance Victoria** 33 Willis Street
- **Bendigo Bank** 11 Main Street
- **Globe Theatre (Side entrance)** 17 Willis Street
- **Hesse Rural Health** 8 Gosney Street
- **Men's Shed** 51 Hesse Street
- **Netball Courts** Eastern Reserve Hopkins St
- **Senior Citizens Club** 36 Harding Street
- **Uniting Church** 33 Hesse Street
- **Winchelsea Bowls Club** Hesse Street
- **Winchelsea Golf Club** 13 Anderson Street
- **Winchelsea Primary School** Main Street
- **Wurdale Memorial Hall** 220 Wurdale Road





 QATAR  
AIRWAYS  
FORMULA 1 • QATAR AIRWAYS  
**AUSTRALIAN  
GRAND PRIX**  
2026

Winchelsea  
Star



# MELBOURNE

*The Season Opener*

**LIMITED TICKETS AVAILABLE**

MARCH 5-8 | ALBERT PARK CIRCUIT | [GRANDPRIX.COM.AU](https://www.grandprix.com.au)

The F1 FORMULA 1 logos, FORMULA 1, F1, FIA FORMULA ONE WORLD CHAMPIONSHIP, GRAND PRIX, PADDOCK CLUB, FORMULA 1 AUSTRALIAN GRAND PRIX, AUSTRALIAN GRAND PRIX and related marks are trademarks of Formula One Licensing B.V., a Formula 1 company. All rights reserved.

