

CATALOGUE



autumn winter

2021


Analco
THE SHOE COMPONENTS BRAND

1

Model 14050



2

Model 14109



3

Model 70780+6671



4

Model 6679+6512/41006



5

Model 14240



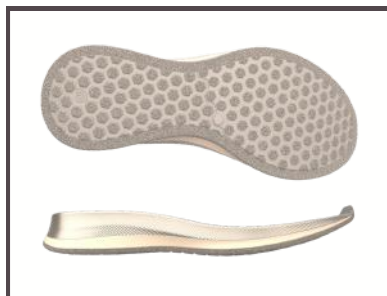
6

Model 14248



7

Model 13849



8

Model 6678



9

Model 60548



10

Model 70930





The **14050** sole fuses the sophistication of the iconic Mary Jane shoe with an elegant **burgundy** tone, the color that has taken this season's displays. With its **polyurethane heel and precise break**, this model adds centimeters to your silhouette without compromising the comfort you deserve.



Model 14050: Glamour begins at your feet

PU sole: 14050

Size range: 35/42



14050





Model 14109:

A journey of comfort with every step

PU sole: 14109

Size range: 35/42



The sole reference **14109**, made of **soft polyurethane**, stands out for its **lightness** and **flexibility**, providing exceptional softness with every step. Designed to offer **effortless everyday comfort**, its cushioned and voluminous structure wraps around the foot with a **futuristic** aesthetic that is sure to catch attention.





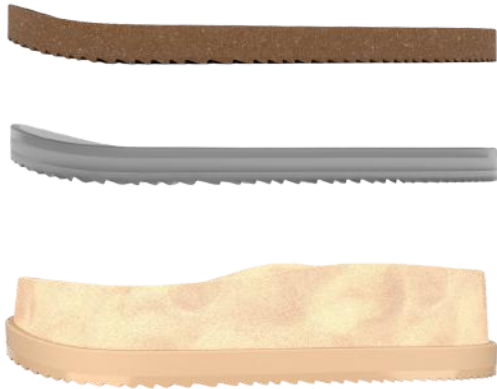
Model 70780+6671: Where height meets character

TR sole: 70780

PU footbed: 6671

Size range: 35/42

Size: 37



The **TR 70780** sole, known for its **durability** and excellent **traction**, pairs perfectly with the **6671 polyurethane** footbed. Together, these pieces excel at **dominating heights** and elevating any look.

The **6679+6512/41006** model is the perfect combination of **bold fashion** and **advanced technology**, ideal for those who value both **style** and **comfort**. Its **leopard print**, the absolute star of the season, adds a unique touch of **personality**.

Model 6679 + 6512/41006:
**A touch of boldness and
comfort**

PU-cork sole: 6679

Size range: 35/42

PU footbed: 6512

Size range: 35/42

EVA insole: 41006

Size range: 35/42





PU-cork sole: 6679

EVA insole: 41006



The **6679 PU-cork** sole with **6 mm thick EVA** skid guarantees lightness and excellent **shock absorption**. The PU sole ensures **superior comfort**, providing long-lasting anatomical support, with multiple **customisable** lining options that allow the model to be adapted to different styles, without losing **elegance** or **comfort**.



Model 14240: Movement without limits

PU sole: 14240

Size: 37



The **14240** model doesn't follow the rules; **it redefines them**. With its **sporty PU sole**, this footwear stands out for its **lightness** and **flexibility**, inviting an unprecedented **movement experience**. It's a design meant for those who never stop, where every step flows naturally. **Break away from the predictable** and embrace a style that goes beyond **comfort**.





Introducing the **14248** sole, a sole that challenges the rules of **comfort** and **design**. Made from **polyurethane**, it is so **light** you'll forget you're wearing anything on your feet, but with the volume and **durability** necessary to keep pace. Its **sporty look** fits with any cut, effortlessly combining **functionality** and **style**. Because yes, style is included. From the office to **after-work**, without losing the **essence**.



Model 14248: Impactful volume, surprising lightness

PU sole: 14248

Size: 37



14248

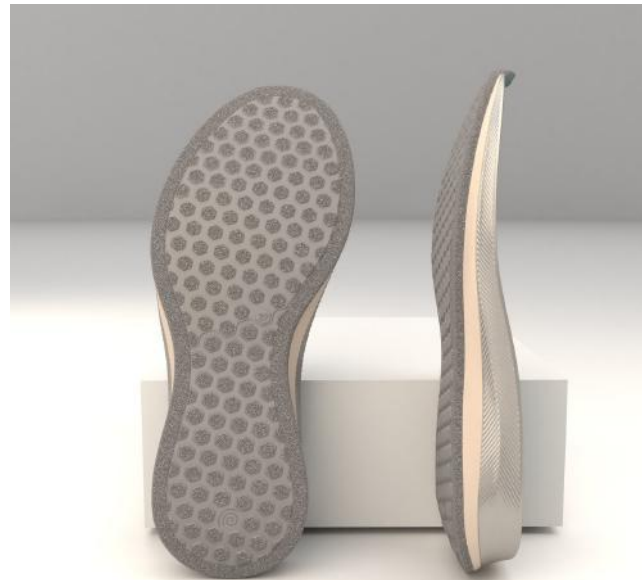




Model 13849:
Versatility and timeless style

PU sole: 13849

Size range: 35/46



Now also available for **women**. A **polyurethane** sole that adapts to any style. Its **discreet sporty aesthetic** becomes the ideal companion for those seeking a touch of **originality** in their daily lives, thanks to the option of **customizable paint**. Additionally, its **timeless** design ensures it remains at the **forefront**, regardless of current trends.

Model 6678: A model that leaves its mark

PU-cork sole: 6678

Size: 37

The model is not just a shoe; it's an **attitude**. Featuring a cork PU-cork sole that absorbs impact and a **rubberized EVA outsole** offering **durability** at just **5 mm thick**, this shoe is built to keep up, no matter the terrain. Its **innovative** technology ensures a **comfortable** and **long-lasting step**, minimizing wear and tear while maximizing the experience. But it's not just about performance. The **denim canvas**, an icon that reigns again this season, adds a touch of **authenticity** and casual **style**.





6678





Model 60548:
The sneaker that redefines style and
sustainability

Rubber sole: 60548

Size range: 36/42



With its **metallic silver** finish and **urban** design, this sneaker positions itself at the forefront of fashion trends. However, its true strength lies in the **60548** sole, engineered to withstand **cold climates** and provide **exceptional grip**.

Additionally, **sustainability** is a top priority in its design. Its innovative structure combines various types of **rubber**, achieving a high percentage of **natural rubber** while promoting the **reuse of production scraps such as tires**, cork, and materials derived from **palm tree** harvesting.

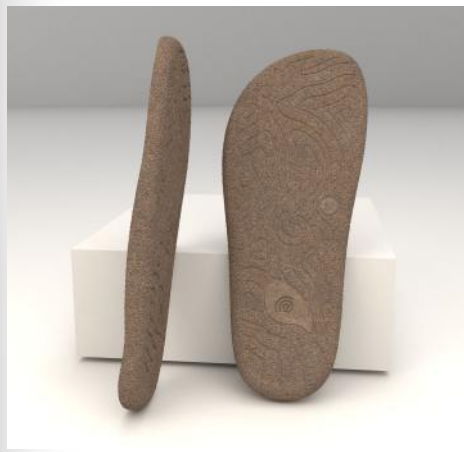


Model 70930:
**The trend of responsible
fashion**

TR sole: 70930

Size range: 36/42





In the era of **conscious fashion**, the **TR 70930** sole positions itself as an option that combines **lightness** and **flexibility** with a firm commitment to **sustainability**. Made from **expanded TR**, this innovative material not only guarantees lightweight footwear but also allows the incorporation of **natural fibers**, adding a **trendy** and **distinctive** touch to your designs.





Phone: +34 966 66 12 12



E-mail: analco@analco.com



Web page: www.analco.com



Commercial office:

Pol.Ind. Torrellano
c/ Germán Bernácer, 11
03203, Elche (Alicante)



Production center:

Avinguda de Crevillente, km 3,
03293 Elche (Alicante)

Pol. Ind. San Juan
c/ Sevilla, 15 -03158- Catral
c/ Barcelona, 7 -03158- Catral



DESIGN

Our team of designers works tirelessly to create products that blend style and functionality, adapting to the latest fashion trends and satisfying the needs of our customers.



SUSTAINABILITY

From choosing eco-friendly materials to employing environmentally respectful manufacturing practices, we strive to reduce our environmental impact and contribute to a more sustainable future.



QUALITY

We are committed to providing products of the highest quality, backed by decades of experience and the implementation of rigorous quality control standards. Every sole and insole we produce reflects our commitment to excellence.



TRADITION

With a history spanning over 50 years, Analco has cultivated a rich tradition in the manufacturing of footwear components. Throughout generations, we have perfected our techniques, preserving craftsmanship and traditional knowledge in every product we create.



Analco[®]
THE SHOE COMPONENTS BRAND