



Antelope Valley
Medical Center



2023-2024
Annual Report

Table of Contents

Overview of AVHD 4

Financials 5

Programs & Services..... 6

Technological Advancements 7

New Projects 8

Milestones10

NICU Feature 11

Community Impact & Involvement.....12

Quality Metrics.....14

Foundation Activities15

Awards & Accolades.....16



Antelope Valley
Medical Center

A Facility of Antelope Valley Healthcare District





Edward Mirzabegian, MHA

Chief Executive Officer
Antelope Valley Medical Center

As we reflect on our history and how much our region has grown and evolved, now more than ever, we are determined to create a more accessible and effective healthcare framework that addresses the needs of the communities we serve. During this 2023-2024 period, I am proud to share the progress and milestones we have achieved at Antelope Valley Medical Center, marked by our significant growth, care, and unwavering commitment to excellence in healthcare.

AVMC has embraced innovation and expanded our services to better serve our community, with the completion of our expanded emergency department, the opening of a new Infusion Suite, and the installation of advanced technology found nowhere else in this region. I'm honored to also announce the upcoming launch of our kidney and pancreas transplant program and a new pediatric intensive care unit. These new initiatives embody our commitment to providing comprehensive care right here at home, ensuring that all residents can access advanced treatments without the need to travel far.

None of these achievements would have been possible without the incredible dedication, skill, and compassion of our nearly 3,000 staff members and over 650 physicians. Their tireless efforts, often in challenging circumstances, have been the driving force behind our successes. I am grateful for their firm devotion to our patients and their role in making Antelope Valley Medical Center a beacon of care and hope.

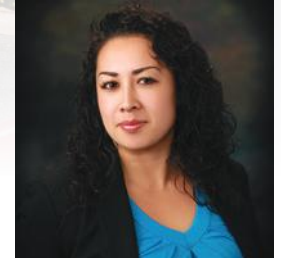
We take our fiduciary and social responsibility seriously to ensure that AVMC remains a sustainable, thriving institution while addressing the broader needs of our community. We're proud of our team for addressing food insecurity by providing healthy food options and improving our care experience by introducing the Patient & Family Advisory Council. By balancing careful stewardship of resources with a commitment to equity and inclusivity, we aim to foster a healthier and more supportive environment for all.

I am filled with immense pride and gratitude for our dedicated staff, board members, and the trust and support of you—our community.

Together, we are not only meeting the needs of today but building a stronger, healthier tomorrow.



Abdallah Farrukh, M.D.
Board Chair



Kristina Hong, NP
1st Vice-Chair

Antelope Valley Medical Center is a facility of the Antelope Valley Healthcare District (AVHD).

Healthcare districts are public entities that provide community-based healthcare services to residents throughout the geographic area they serve. Healthcare Districts provide access to essential health services and are directly accountable at the community level.

Healthcare Districts meet the needs of:

- Communities with severe health care provider shortages
- Uninsured Californians
- Low-income seniors, adults, and children through Medi-Cal
- Underserved populations

As a member of the Association of California Healthcare Districts (ACHD), the Antelope Valley Healthcare District is one of 38 healthcare districts across the state of California. Each district is governed by a locally elected board of directors who are directly accountable to the communities they serve. The AVHD elected directors oversee the activities of the district in accordance with the district's bylaws and state laws governing healthcare districts.

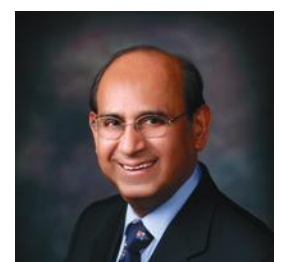
The Antelope Valley Healthcare District's five elected board members collaborate closely with the hospital's executive management team to fulfill the vital responsibilities of the healthcare district. This partnership ensures that strategic decisions and policies are aligned with the mission of delivering high-quality, accessible care to our community. Through their combined expertise and commitment, they work to uphold transparency, strengthen community trust, and guide Antelope Valley Medical Center in meeting the evolving healthcare needs of the region.



Steve Hofbauer
2nd Vice Chair



Don Parazo, M.D.
Secretary



Doddanna Krishna, M.D.
Treasurer

Net Patient Revenues

Fiscal Year 2023 Fiscal Year 2024

\$440,090,125	\$469,452,673
----------------------	----------------------

Annual Community Investment

Fiscal Year 2023 Fiscal Year 2024

Provision for Uncollectible Accounts	\$12,406,281	\$18,112,928
Charity Care	\$7,523,980	\$7,830,816

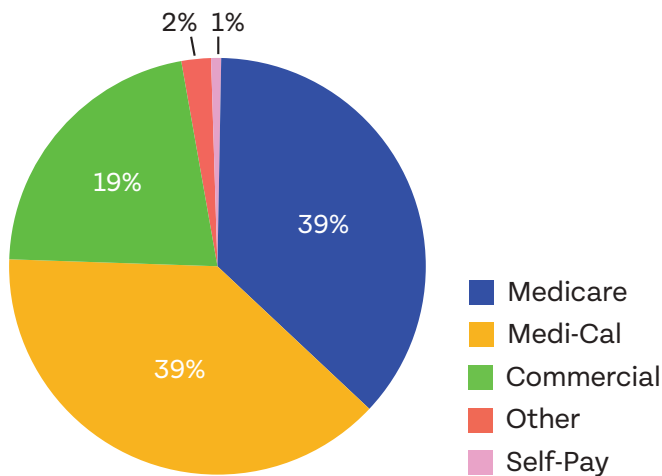
Operating Expenses

Fiscal Year 2023 Fiscal Year 2024

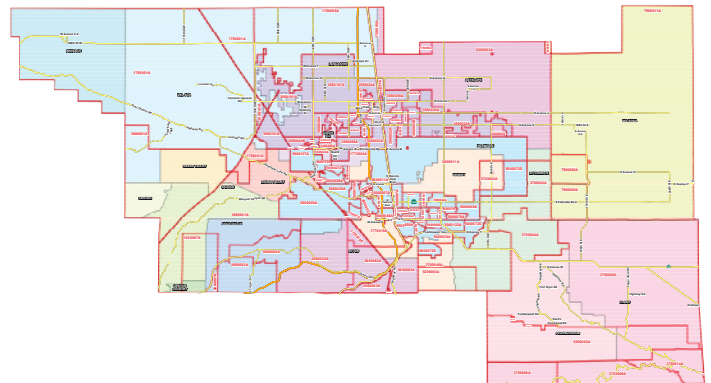
Salaries	\$238,413,279	\$243,718,223
Employee Benefits	\$74,761,078	\$66,496,846
Total Salaries & Benefits	\$313,174,357	\$310,215,069
Supplies	\$74,121,855	\$76,519,870
Depreciation	\$27,352,207	\$28,347,168
Total Expenses	\$518,957,149	\$526,399,990

Our Patients

Payor Class Percentage | Snapshot



Antelope Valley Healthcare District Map



Snapshot of Patients Served

Fiscal Year 2023 Fiscal Year 2024

# of Inpatient	18,130	18,740
# of Surgeries (Inpatient/Outpatient)	7,720	8,066
# of Emergency Room Visits	122,662	118,448
# of Outpatient Procedures (Includes ED Visits)	142,645	133,614

Babies Born at AVMC

Fiscal Year 2023 Fiscal Year 2024

3,079	3,342
--------------	--------------

About AVMC

- Full Service, Acute Care
- 420 Hospital Beds
- 24/7 Emergency Dept.
- 650 Physicians
- 2,700 Employees
- 450 Volunteers
- Founded in 1955

Programs & Services

At Antelope Valley Medical Center (AVMC), we are committed to expanding and developing our healthcare services to meet the growing needs of our community. We are focused on keeping advanced, specialized care close to home, we strive to offer state-of-the-art treatments and personalized care solutions.

- 24-hr in-patient Pharmacy
- Accredited Chest Pain Center
- Behavioral Health In-Patient Services
- CA Children's Services Approved Hospital
- Cardiology
 - LAAO (Watchman Device) for Atrial Fibrillation
 - Transcatheter Aortic Valve Replacement (TAVR)
 - Mitral Valve Clip Procedure
- Comprehensive Stroke Center
 - Thrombectomy
- Critical Care Unit
- Ear, Nose, and Throat (ENT)
- Emergency Services
- Forensics Unit
- Home Health Services
- Infusion Suite Care
- Lab Services
- Level II Trauma Center
- Level IIIB Neonatal Intensive Care Unit
- Comprehensive Community Cancer Center
- Obstetrics-Gynecology Outpatient Clinic
- Orthopedics
- Palliative Care
- Pediatric Care (EDAP Designation)
- Perinatal Services
- Radiology
- Rehabilitation Services
- STEMI (heart attack) Receiving Center
- Surgery
- Urology Services
- Women and Infants Pavilion
- Wound Care

Service Highlights

AVMC is redefining healthcare in the Antelope Valley with many innovative advancements and expanded services designed to enhance healthcare options and the patient experience for our local community.

Mitral Valve Clip Procedure

The mitral valve clip procedure provides a non-surgical solution for patients with mitral regurgitation, significantly improving heart function by repairing damaged mitral valves. This innovative treatment offers a vital alternative for those who may be at high risk for open-heart surgery. Now performed in our cardiac cath lab, the mitral valve clip procedure is considered a first-line treatment for high-risk patients, offering numerous benefits such as shorter recovery times, minimal invasiveness, and significantly less pain than traditional surgery.



Cancer Program Wig Bank Dedication

AVMC dedicated the hospital's Wig Bank to Patricia "Pat" Karnstedt, who served our community as the Cancer Program Coordinator. Pat spent countless hours of compassionate care and devotion to our cancer patients, and we are delighted to continue her legacy. The wig bank supports patients undergoing cancer treatment and experiencing hair loss.

Lung Cancer Steering Committee

AVMC Cancer Program Coordinator Christy Monteith, RN, MSN, FNP-C, was selected as a member of the American Cancer Society's Los Angeles County Lung Cancer Coalition. The Coalition is a collaborative effort to enhance equitable access to lung cancer care, from screening to treatment. With a lung cancer death rate of 42% in our community, Antelope Valley representation is vital.

Transcatheter Aortic Valve Replacement Procedure

The cardiology department proudly crossed a significant milestone in its commitment to delivering cutting edge cardiovascular care to the community, as they completed their 100th Transcatheter Aortic Valve Replacement (TAVR) procedure, marking a momentous achievement in the field of minimally invasive heart care. TAVR is a minimally invasive procedure to replace diseased aortic valves without performing open-heart surgery.





MRI AI System

As one of only 10 facilities in Southern California to offer this advanced technology, AVMC has upgraded its MRI with the installation of the SIGNA™ Artist Lift 1.5T MRI system. Using AI technology, the system produces images that are up to 60% sharper and reduces scan times by 50%. The patient-centric system also offers solutions to patients whose medical conditions previously excluded them from MRI scanning, including those with claustrophobia, tremors, dementia, emergent, and post-stroke patients, and patients needing multiple scans.

Biplane Catheterization Laboratory

Committed to advanced medical care and technology, AVMC added a state-of-the-art Biplane Catheterization Laboratory (Cath Lab). Biplane imaging is one of the most advanced interventional medical imaging technologies available. This cutting-edge technology enables our stroke team to perform very complex Neurovascular procedures, eliminating the need for patients to travel long distances outside the Antelope Valley.



CT Machine

The radiology department has upgraded its inpatient imaging capabilities with the addition of a GE computed tomography (CT) scanner. Now, operating three advanced CT scanners enhances the hospital's diagnostic capabilities and improves the patient experience with reduced wait times. Having three scanners allows the radiology team to provide continuous coverage for emergency, trauma, and acute care situations.

Ambulance Fleet

To address the increasing demand for efficient patient transportation service, AVMC has leased two of its own dedicated ambulances. Having ambulances on campus will enhance the overall patient experience and streamline the process of transferring patients beyond the hospital premises, promoting a positive and stress-free experience for patients and their families.



MOXI Robots

AVMC is the only hospital in the region to integrate robotic automation with three Moxi robots. Designed to support nursing staff by taking on time-consuming, non-patient-facing tasks, Moxi is revolutionizing how clinical staff manage their workflows. Moxi is equipped with advanced machine learning technology and can navigate the hospital's environment independently, fetch supplies, deliver lab samples, and pick up medications from the pharmacy. The robots have made over 19,000 deliveries within their first year, saving the clinical team thousands of hours and significantly improving their efficiency.



New Projects



New Hospital

Initially built in the 1950s, AVMC faces significant challenges, as most of its current buildings do not meet the State of California's new seismic safety standards. Under Assembly Bill 2190, the state has mandated that all hospitals must comply with updated seismic regulations by January 1, 2030. If a new facility is not completed by this deadline, Antelope Valley Medical Center will be unable to use large sections of its current building, including key patient care areas, potentially compromising the delivery of critical services.

In response to this requirement, AVMC is proactively planning the construction of a new hospital that will meet state safety standards and elevate the quality of care provided to the Antelope Valley community. Designed with input from healthcare professionals, the hospital will prioritize patient privacy and comfort, with increased capacity and a greater number of single-patient rooms.

This new facility will also be crucial in enhancing AVMC's ability to recruit highly skilled doctors, nurses, and staff. Designed for the future of healthcare, the new hospital will provide an environment where patients receive the highest standard of care, reinforcing its commitment to the health and well-being of the Antelope Valley community.



New Pediatric Intensive Care Unit

AVMC took a major step forward in pediatric care by announcing the decision to open a dedicated Pediatric Intensive Care Unit (PICU), a first for our community. This new unit allows us to provide advanced, specialized care for critically ill children close to home, reducing the need for families to seek treatment outside the Antelope Valley. Highly trained pediatric intensivists, nurses, and support teams, in addition to being equipped with the latest technology will support life-saving interventions and continuous monitoring for young patients with complex and acute medical needs. The addition of the PICU reflects our commitment to enhancing healthcare access and improving outcomes for our youngest and most vulnerable patients.

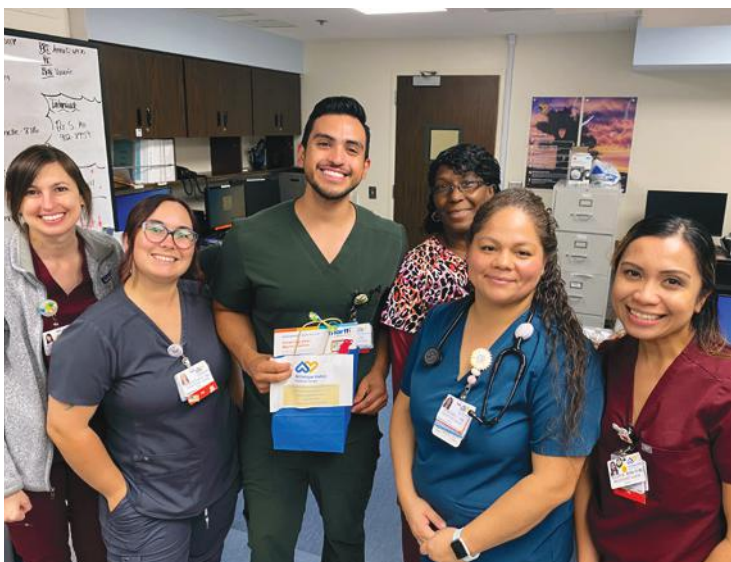


Antelope Valley Specialty Hospital

With a groundbreaking scheduled for 2025, AVMC is excited to start construction and operate a Behavioral Health and Inpatient Rehabilitation hospital in Lancaster. This state-of-the-art facility will house 48 behavioral health beds and 30 acute inpatient rehabilitation beds, offering critical services and expanding access to much-needed care in our region. The facility will provide a full continuum of inpatient and outpatient behavioral health services, including crisis stabilization for acute mental health and substance use disorders; detoxification from alcohol and drugs; and treatment for anxiety, depression, and other behavioral health illnesses. The hospital will also include an acute rehabilitation unit that will help adults who have experienced a loss of function or disability due to stroke, neurological disorders, orthopedic surgery, and other conditions. The rehabilitation unit will feature all private rooms and provide intense, interdisciplinary rehabilitation therapies and medical care to improve patients' functional independence and help them return home.

Patient & Family Advisor Council Program

Introduced by our Diversity, Equity and Inclusion team, the Patient and Family Advisory Council empowers patients and their families to share insights and experiences that help shape the future of care. By collaborating with our healthcare teams, patient and family advisors contribute valuable perspectives on services, policies, and initiatives, ensuring that our approach remains compassionate, patient-centered, and aligned with the needs of those we serve.



New Outpatient Rehabilitation Center

Committed to our patients at every stage of their recovery journey, Antelope Valley Medical Center will be expanding its rehabilitation services with the opening of a comprehensive Outpatient Rehabilitation Center, offering accessible, high-quality care for patients needing support after illness, injury, or surgery. This new facility will provide specialized therapies, including physical, occupational, and speech therapy, in a state-of-the-art environment designed to promote recovery and long-term wellness. Staffed by experienced rehabilitation professionals, the center will deliver personalized care plans aimed at restoring strength, mobility, and independence, allowing patients to regain quality of life in their community.

Kidney & Pancreas Transplant Program

AVMC will be launching a comprehensive kidney and pancreas transplant program tailored to meet the specific needs of our community. Our team is diligently working to bring the highest level of nephrology care to patients in the Antelope Valley. The program is specially designed to support individuals on dialysis who are also managing diabetes and require insulin therapy, offering the transformative possibility of combined kidney and pancreas transplant surgery.

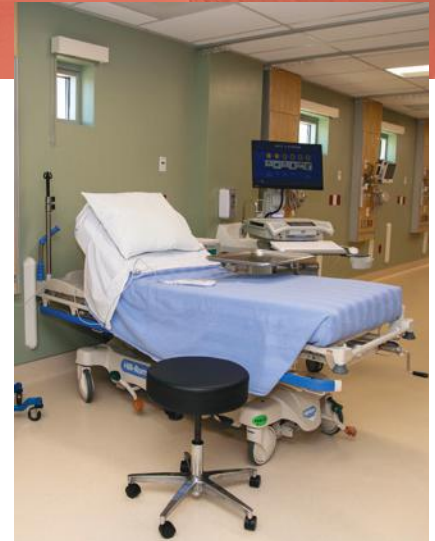
Milestones



Emergency Department Expansion | AVMC has completed a significant expansion of its Emergency Department (ED), adding a new 7,200 square-foot facility featuring 40 treatment bays, a nurses' station, and essential support areas. As the second busiest emergency department in the State, this expansion increases our capacity to better serve the Antelope Valley community. The new addition integrates seamlessly with the existing ED, improving efficiency and workflow to better meet the needs of our growing population.

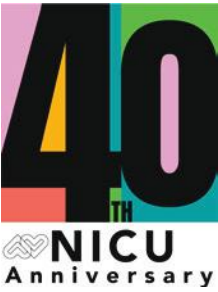
As a modular facility, the new extended ED consists of 15 modules, each weighing from 39,000 lbs. to 64,300 lbs. The facility also has domestic water and sewage tank systems that will play a crucial role in confirming the new space can operate independently for 96 hours in the event of an emergency. Ensuring we're doing our part to protect the environment, an underground stormwater filtration system will filter out debris, trash, and other contaminants from the stormwater before going into the city's drains.

AVMC staff had the opportunity to sign one of the last beams added to the new facility, leaving their mark on AVMC history.



Infusion Suite Care

The opening of the new Infusion Suite addresses a crucial need in our region by offering a dedicated space for infusion therapy, catering to patients requiring intravenous medications or other specialized treatments. Those who opt for the infusion method of therapy can benefit by experiencing lower treatment costs, better health outcomes, higher safety measures, and greater accommodation. By centralizing these services in one accessible location, we aim to streamline the patient experience, ensuring convenience and comfort throughout their treatment journey.



Celebrating Four Decades of Neonatal Care

AVMC's Neonatal Intensive Care Unit reaches its 40th Anniversary | Antelope Valley Medical Center proudly celebrated the 40th anniversary of its Level 3B Neonatal Intensive Care Unit (NICU). AVMC has been at the forefront of providing specialized care for premature and critically ill newborns for four decades, ensuring their health and well-being from the very first moments of life.

Since its inception in 1984, with only five beds, the NICU has been a beacon of hope for families. Today, the NICU is a 21-bed unit staffed with a dedicated team of neonatologists, nurses, respiratory therapists, and support staff who have played a pivotal role in advancing neonatal care, ensuring a positive and comprehensive support system for the nearly 16,000 babies they have cared for over the years.

“Providing the care a baby needs during its ‘Golden Hour’ makes a significant difference on the baby’s outcome. It brings me vast pride to know we have provided this level of expertise and care to the AV for 40 years,” stated Antelope Valley Medical Center NICU Medical Director and Neonatologist, Murugesha Thangavel, M.D.



Marina and Arya Stowers' NICU Story

Only in her second trimester, Marina was not yet ready to deliver her daughter, Arya, but Arya had other plans. After experiencing spotting and pain, Marina was rushed to the hospital, where the medical team tried to stop her labor and administered medication to develop Arya’s lungs. Despite their best efforts, Arya arrived early at just 25 weeks, weighing a fragile 1lb 10oz and measuring 10 inches long. She was immediately placed in the neonatal intensive care unit (NICU) for specialized care. “It was very difficult, but we knew. We were told it was going to be a roller coaster.... We were prepared,” Marina reflects.

“If they weren’t there, I personally don’t know if I would have survived as well as I did.”

Throughout Arya’s 129-day stay—the longest in AVMC’s NICU—she faced numerous complications, including oxygen issues and surgery for patent ductus arteriosus (PDA). Now, 10 years later, Marina reflects on the past in admiration toward the NICU staff and doctors who played a pivotal role in Arya’s recovery. “That place, the staff, the nurses (Julie and Lily), the doctors (Dr. Thangavel and Dr. Lipsky), and just everyone that had their hands in it, were absolutely amazing,” she gushes.



Community Impact Healthier Together

As a committed community member, we prioritize engaging with residents to promote healthcare education, wellness, and awareness. Our involvement extended to health fairs, school partnerships, support groups, and local events, where we aimed to enhance health literacy and provide valuable resources to community members.



Preventing Summer Tragedy with Lifesaving Skills

AVMC and the Antelope Valley YMCA joined forces to promote pool safety and provide lifesaving skills that can potentially prevent a tragedy. The event was featured in a televised news segment, reaching an even broader audience to demonstrate critical water safety techniques, and a live CPR demonstration performed by our trauma team.

Pink Ribbon Runway Fashion Show & Breast Cancer Awareness Event

To raise breast cancer awareness, the hospital hosted several events: our first Pink Ribbon Runway fashion show highlighted breast cancer survivors, those currently fighting the disease and those who provide support to cancer patients. The Mammos & Mocktails event had more than 100 attendees. They were provided same-day screening mammograms, encouraged to share stories, engage in physician-led discussions, and treated to chair massages, nail polish changes, and yoga demonstrations.



Addressing Food Insecurity among Cancer Patients

Enhancing the lives of AVMC oncology patients, the hospital teamed up with our local YMCA to provide assistance with food access. This program addresses food insecurities among our cancer patients currently receiving oncology treatment. Patients receive fresh produce and other food products monthly.

Breast Milk Donation Drive to Support Babies in Need

As one of only four designated milk collection sites in Los Angeles County, breastfeeding moms can drop off breast milk at AVMC's Women and Infants Pavilion; it will then be processed, pasteurized, and distributed to infants in need of this vital resource. AVMC hosted annual Milk Drives to supply the milk bank, receiving thousands of ounces of breast milk each drive.



New Partnership to Empower Employment Opportunities for the Unhoused

AVMC collaborated with Casters Coffee, a local coffee roasting company founded by homeless people, for homeless people to integrate their services into the hospital's daily operations. Casters Coffee spends 100% of its proceeds on hiring, training, and positively impacting unhoused individuals.



Safe Driving: Every 15-Minutes Program | Every year our hospital's trauma and emergency department teams work with local high schools to simulate a trauma situation involving a drunk driver. The program helps educate students about preventing alcohol-related accidents, challenging them to think about personal safety and the responsibility of making mature decisions when lives are involved.



Car Seat Safety: Keeping Kids Safe on the Road | In partnership with the County of Los Angeles Department of Public Health and California Highway Patrol (CHP), AVMC hosted free car seat safety workshops for new or expecting parents. Countless children are injured or killed every year due to their child passenger safety seats not being correctly installed. Over 90 caregivers participated in learning how to install a car seat.

Act of Kindness in October | Socks are the #1 most needed but least donated item for homeless shelters. Team AVMC participated in Socktober to rally together in an annual sock drive during the winter months. We were able to donate over 2,400 pairs of socks to those in need.

Antelope Valley Wellness Expo | Empowering the community to live healthier lives, AVMC hosted its 2nd Antelope Valley Wellness Expo, a free community event with over 300 registrants. The event featured interactive discussions on stroke education, men's health, social and mental wellness, and women's health. Attendees could visit a free health screening area for cholesterol, blood pressure, glucose, body fat, and skin cancer screenings, as well as flu vaccines, eye exams, and HIV testing.



Heart Fair Advocates Cardiovascular Health for Women

With heart disease being a leading cause of mortality among women, the Women's Heart Fair aims to raise awareness, educate, and empower women to prioritize their heart health. With over 90 attendees, the event featured an engaging session with an all-female panel of medical professionals, including a pharmacist, cardiovascular nurse, and physician. Participants had access to non-fasting cholesterol tests, blood pressure and BMI checks, in addition to home medication reviews with a hospital pharmacist.



Supporting Antelope Valley Families During the Holiday Season

| Team AVMC organized a food drive to support a local food bank, bringing Thanksgiving meals to families in need. This initiative has enabled us to provide Thanksgiving groceries to over 5,000 families throughout the Antelope Valley community. Our team is honored to have made the holidays a little brighter for our neighbors.



Men's Cancer Prevention Event

AVMC held its first successful Men's Health and Bowling event that was not only a fun-filled evening of bowling, but also delivered crucial cancer prevention education to the community. With over 90 registrants, the event was designed to raise awareness about early cancer detection and prevention, particularly for colon and prostate cancers. Attendees were also treated to complimentary haircuts and a round of bowling.

A Commitment to Quality & Transparency

As the largest acute care hospital within a 50-mile radius of the Antelope Valley, we take pride in assuming the leadership role in quality to advance patient care in the region. Antelope Valley Medical Center strives to be the provider of choice for all essential healthcare services, and to ensure we are offering the best quality care.

Our uncompromising commitment to quality is driving change throughout every department – from admitting to the operating room. We continuously evaluate our performance by our own internal benchmarks and those established by local health agencies, regulatory and accreditation bodies. More so, AVMC has a dedicated department, the Patient & Family Experience department that focuses on service excellence, meeting patient expectations, and attentiveness to patient needs. Nothing is more important than the quality of care we give our patients.

We measure quality according to patient experience (through our Hospital Consumer Assessment of Healthcare Providers or HCAHPS) and by industry guidelines, established by the Joint Commission (TJC) National Patient Safety Goals (NPSG), Society of Thoracic Surgery (STS), American College of Surgeons (ACS), and the American Heart Association's (AHA) Get with the Guideline (GWTG). We submit numerous quality data to the Center of Medicare and Medicaid (CMS), The Joint Commission, STS, and GWTG dashboards. Such data includes indicators from the following programs: ST-Elevation Myocardial Infarction (STEMI), Coronary Artery Bypass Graft (CABG), Transcatheter Aortic Valve Replacement (TAVR), and Watchman procedure (which prevents blood clots), in addition to core measures such as perinatal services, stroke, sepsis, safe opioid use, hospital-acquired conditions and infections, employee influenza vaccination, and hand hygiene.

AVMC also works closely with the Hospital Quality Institute (HQI) to increase transparency and provide our patient community with safety data, to help empower patients in making the best choices for their health care. The safety data demonstrates how individual hospitals perform in essential quality measures in comparison to national and state performance metrics.

Our commitment to quality is central to our philosophy, and AVMC is committed to improving patient safety, satisfaction, and quality of care.



“What each of you did for me, has touched me positively”

For Miguel the events of June 3rd started off as a typical day out with his family in Mojave, California. As kids, Miguel and his family would frequently drive out to the desert and spend time shooting targets--but this day was different. Miguel was shooting targets with a friend while his cousin was testing out an 1800's musket style rifle known to take down wildlife, such as deer, bison, bears and other large animals. The weapon kept misfiring, so they told him to put it away. Eventually, the weapon goes off, but no one would have imagined what would come next--Miguel was shot. “It felt like someone hit me with a bat... I really thought it was a bad practical joke. I thought someone hit me... and they thought it was funny.”

His brother and a friend get him into the car as they try to figure out where to take him. “I knew where we needed to go,” he says, “I gave them directions to the hospital (Antelope Valley Medical Center).” When he arrived, hospital staff came out to him, “The moment I had the opportunity to sit in a wheelchair, I just landed. I sat there and went limp and thought I’m in your hands now,” he says.

Still conscious, Miguel was quickly taken into the ER and could hear staff coordinating his care, requesting scans, administering morphine, and then rushing him to surgery. As they are prepping him, he recalls a feeling of comfort, peace, and hope that he felt from an individual who held his hand, “I kept asking people who was that person... who was the one that grabbed my hand... gave me strength... who was the one that told me they weren’t going to let go,” he recalls.

Today, Miguel is recovering and getting physical therapy close to home, but he remembers the care he received at AVMC. As well as, the feeling that the radiology tech, Arnie, invoked in him by holding his hand telling him that everything was going to be okay. That feeling is something that resonates with him still during his recovery and he hopes to be able to do the same for others around him. “It was so powerful... I want to be able to do that for somebody else,” he says, “I’m going to give them that same energy back.”

Foundation Activities

The Foundation's mission is to raise funds for the hospital's needs and long-range growth, such as facility upgrades, innovative equipment, and building a healthier community.

Employee Giving Program | With nearly 3,000 employees, about half of the hospital's staff support the Foundation's annual employee giving program, "**My Heart Belongs to AVMC**," which brings in more than \$75,000 a year to support Antelope Valley Medical Center's Greatest Need in support of clinical and educational programs---Together, we can support the healthcare breakthroughs of tomorrow.

Holiday Plea | Our foundation engages with the community during the holiday season through heartfelt holiday cards to support Antelope Valley Medical Center's greatest needs. This new fundraising initiative enhances the quality of care at AVMC and provide essential resources for future programs. Unrestricted contributions enable us to respond effectively to immediate challenges, ensuring we can deliver state-of-the-art healthcare solutions.

Greatest Need Initiatives | The Antelope Valley Medical Center Foundation values individual and unrestricted donations to empower our hospital and address its most urgent needs. These generous donations provide critical resources that allow our exceptional medical team and dedicated staff to support patient care where it is needed most. Unrestricted gifts make the biggest difference and have a direct, positive impact on the care provided to patients and their families.

Golf Tournament | The Foundation hosts an Annual Invitational Golf Tournament to raise funds for the hospital.

2023 marked the 20th Annual Invitational Golf Tournament, selling out the event with 144 golfers attending. The net proceeds raised was over \$141,000 including in-kind donations.

2024 marked the 21st Annual Invitational Golf Tournament, selling out the event with 144 golfers attending. The net proceeds raised was over \$150,000 including in-kind donations.

Foundation Gala | Since it began in 2009, the Antelope Valley Medical Center Foundation has raised more than \$1.7 million to benefit various departments within the hospital, such as the Women and Infants Pavilion, the Institute for Heart and Vascular Care, the Pediatric Unit, and the Emergency Department. This generous support has improved healthcare services and supplied essential resources for education, training, and facility upgrades.

We look forward to the return of the Foundation Gala in 2025 to celebrate the hospital's 70th anniversary. This special event will honor our past and celebrate our current successes, while supporting the hospital's future with innovative enhancements that shape the excellent patient care provided in our community.

Proceeds from the golf tournaments support Antelope Valley Medical Center's greatest needs, funding vital clinical and educational programs and providing cutting-edge equipment.



Antelope Valley Medical Center Foundation is a 501 (c)(3) nonprofit organization. Gifts may qualify as a charitable deduction for tax purposes. Please consult your tax advisor for advice on tax deductions for charitable giving. Tax ID: 95-2975107



Tiny Footprint Keepsakes | The Tiny Footprints program offers beautifully crafted keepsake medallions and crystal ornaments to families of newborns at the Women and Infants Pavilion. Each keepsake is engraved with the unique imprint of a child's tiny footprint, creating a cherished memento that honors their arrival. Proceeds from the Tiny Footprints program directly support the Level IIIB Neonatal Intensive Care Unit (NICU), helping fund essential, life-saving equipment.

Awards and Accolades



Antelope Valley Medical Center is honored to be recognized by these creditable and respected institutions and accreditation agencies.



Get With The Guidelines® Gold Plus with Target Achievement Award

Hospitals receiving Get With The Guidelines® Stroke Gold Plus with Target: Stroke Honor Roll with Target: Type 2 Diabetes Honor Roll award have demonstrated their commitment to ensuring stroke patients receive the most appropriate treatment according to nationally recognized, research-based guidelines, ultimately leading to more lives saved and reduced disability.



Reaccredited by The Joint Commission

Antelope Valley Medical Center has earned The Joint Commission's Gold Seal of Approval® for the Advanced Stroke Program Accreditation by demonstrating continuous compliance with its performance standards. The Gold Seal is a symbol of quality that reflects a health care organization's commitment to safe and quality patient care.



Gold Performance Achievement Award – Chest Pain – MI Registry

AVMC is a recipient of the 2024 Gold Performance Achievement Award from the American College of Cardiology for participating in the Chest Pain – MI Registry. AVMC demonstrated sustained achievement of performance measures in treating acute myocardial infarction patients through the implementation of American College of Cardiology/American Heart Association Guideline Recommendations.



HIMSS Electronic Medical Record Adoption Model (EMRAM) Stage 7 Validation

The HIMSS EMRAM assesses global electronic medical records (EMR) implementation in hospitals, driving data-based care improvements in acute or inpatient settings. Leveraging digital information enhances patient safety and satisfaction by reducing errors, shortening patient stays, and eliminating redundant care orders.



Silver Award Honor Roll for Antimicrobial Stewardship Program

Awarded by the California Department of Public Health's (CDPH), Healthcare-Associated Infections (HAI) Program, this honor is established on criteria that measures the robustness of the antimicrobial stewardship efforts. AVMC has been demonstrated to improve patient outcomes and reduce adverse consequences, including combatting antimicrobial resistance (AR) and mitigating *Clostridioides difficile* infections.

Baby-Friendly Designated Hospital

This honor reflects Antelope Valley Medical Center's commitment to the highest standards of care for breastfeeding mothers and babies, based on the World Health Organization (WHO) and United Nations Children's Fund (UNICEF) Ten Steps to Successful Breastfeeding, for optimal infant feeding in the early days of life.



OneLegacy HRSA Platinum Award

Recognized by the Health Resources & Services Administration (HRSA), AVMC has earned national recognition for the OneLegacy Platinum Award in its efforts to increase organ, eye, and tissue donor registrations across the state through the Workplace Partnership for Life (WPFL) Hospital Organ Donation Campaign.



Honor Roll Award for Superior Performance in Opioid Care

To receive this certificate, AVMC scored ≥ 27 points on the 2021 Opioid Management Hospital Self-Assessment and scored at least one point in each of the following four domains of care: safe and effective opioid use, identifying and treating patients with opioid use disorder, overdose prevention, and applying cross-cutting opioid management best practices.



National Comprehensive Community Cancer Center Accredited

Our cancer program has earned a prestigious three-year accreditation from the Commission on Cancer (CoC), a program of the American College of Surgeons. AVMC stands as the only hospital in the region with this accreditation. Achieving CoC accreditation requires meeting 34 rigorous quality standards, undergoing re-evaluation every three years, and consistently delivering comprehensive, patient-centered cancer care.



Thrombectomy-Capable Stroke Center (TSC) Certification

The Thrombectomy-Capable Stroke Center (TSC) Certification, awarded in collaboration with the American Heart Association and American Stroke Association, demonstrates Antelope Valley Medical Center's excellence in stroke care, commitment to a higher clinical standard, and dedication to consistent, high-quality treatment.



Approved STEMI Receiving Center

AVMC was named a STEMI (ST Elevation Myocardial Infarction) Receiving Center. One of only 34 such hospitals in Los Angeles County, this certification means that AVMC has the training, equipment, and processes in place to immediately treat patients experiencing acute cardiac myocardial infarction (heart attack). This results in an earlier definitive diagnosis and treatment with improved outcomes.



Certified Healthcare District

The Antelope Valley Healthcare District (AVHD) was one of the first districts in the state to be named a Certified Healthcare District by the Association of California Healthcare Districts (ACHD). This prestigious designation certifies that the AVHD has demonstrated, among other things, best practices in governance and is conducting business in a transparent manner.

American College Surgeons Verification - Level II Trauma Center

The American College of Surgeons (ACS) Verification, Review, and Consultation (VRC) Program assists hospitals in the evaluation and improvement of trauma care and provide objective, external review of institutional capability and performance. These functions are accomplished by an on-site review of the hospital by a peer review team experienced trauma care. The team assesses commitment, readiness, resources, policies, patient care, performance improvement, and other relevant program features as outlined in Resources for Optimal Care of the Injured Patient.



Edward Mirzabegian Leading with Vision and Impact

Edward Mirzabegian's leadership at Antelope Valley Medical Center has been a driving force for innovation and growth, advancing patient care and strengthening community health. With a strategic focus on expanding services and enhancing quality, he has guided AVMC through significant milestones. His transformative leadership has been recognized with numerous industry accolades, highlighting his commitment to excellence and influence within the healthcare community. He was:

- Awarded CEO of the Year by the Association of California Healthcare Districts
- Nominated CEO of the Year in the Los Angeles Business Journal's 2024 Health Care Leadership Awards
- Recognized for his regional influence in the Los Angeles Business Journal's Valley 200
- Named as one of the most influential leaders and impactful professionals in the Los Angeles region in the Los Angeles Business Journal's LA500 list

Edward's vision continues to shape the future of AVMC as we begin to celebrate 70 years of service in the Antelope Valley.



Los Angeles County Designations

Antelope Valley Medical Center is the only hospital in the area designated by Los Angeles County as an Emergency Department Approved for Pediatrics (EDAP). This distinction requires emergency departments to meet strict criteria, including specialized pediatric equipment, dedicated physician coverage, and ongoing pediatric education.

The County of Los Angeles approves AVMC as a Comprehensive Stroke Center. This designation signifies that AVMC has the equipment, infrastructure, staff, and training programs needed to provide care based on the most current research and standards to foster better outcomes for patients with stroke.



“

From feeling like the end of our lives to getting support from all of you has made a world of difference

~Cassandra & David

”



Antelope Valley
Medical Center



“They have the best nurses and doctors! My dad was in the hospital for his birthday and his nurses were kind enough to get him cupcakes and sing happy birthday to him! Thank you so much to the nurses, doctors, and EMT’s that took care of him!”

~ Google Review





“There are way too many awesome people that took great care of me to name. They listened to me, helped me, (and) comforted me during moments of pain or stress. When they came into my room, they treated me with love and respect... Your hospital (AVMC) is lucky to have them.”

~ Karolyn, 4 Tower Patient



“Fueron como caídos del cielo... la respuesta a todas nuestras oraciones, todos ustedes fueron la respuesta”

~ Erika, Labor and Delivery Patient



“It was all of you (AVMC Staff). If you weren’t taking care of me, who knows what would have happened. All their work is very appreciated, not just for myself but for my family”

~ Jennifer, Trauma/ICU Patient





Antelope Valley
Medical Center

1600 West Avenue J | Lancaster, CA 93534
661-949-5000 | www.avmc.org



@AVMedicalCenter



Join our Team

