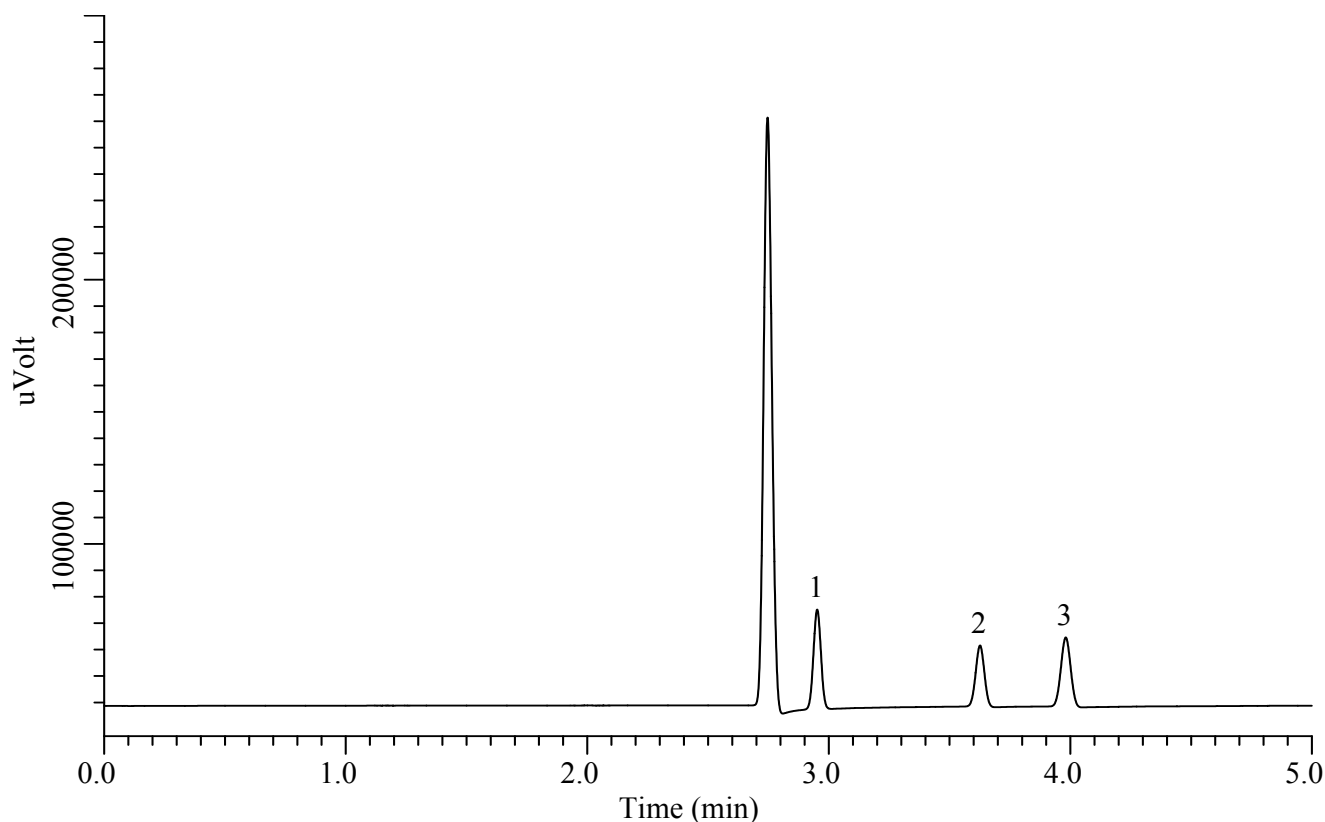


# InertSearch™ for GC

InertCap® Applications

## Inorganic gases

Data No. GA213-0591



### Conditions

**System** : GC/PDD  
**Column** : TC-BOND Q  
0.53 mm I.D. x 30 m df = 20 µm  
**Col. Cat. No.** : 1010-40243  
**Col. Temp.** : 40 °C  
**Carrier Gas** : He 20 kPa  
**Injection** : Split flow 50 mL/min  
120 °C  
**Detection** : PDD(HID) Range x1  
250 °C  
**Sample Size** : 1000 ppm Vol/Vol in He  
400 µL

### Analyte

1. Methane  
2. Carbon dioxide  
3. Nitrous oxide