

TEAMWEAR

2025



CONTENTS



T-SHIRTS

AUTHENTIC CLASSIC T & LONG SLEEVE T	18
AUTHENTIC HEAVYWEIGHT T	19
PURE ORGANIC T	20

POLOS

CLASSIC POLYCOTTON POLO	24
HARDWEARING POLYCOTTON POLO	24
STRETCH POLO	25
CLASSIC COTTON POLO	26
ULTIMATE COTTON POLO	26
AUTHENTIC ECO POLO	27



SWEATSHIRTS & JOG PANTS

AUTHENTIC SWEATS	30
CLASSIC SWEATSHIRT	34
HOODED SWEATSHIRT	35
SWEAT PANTS	35

SHIRTS & BLOUSES

POLYCOTTON POPLIN SHIRT	39
STRETCH SHIRT	40
PURE COTTON POPLIN SHIRT	41
ULTIMATE STRETCH SHIRT	41
OXFORD SHIRT	43



HERRINGBONE SHIRT	47
ULTIMATE NON-IRON SHIRT	49



KNITWEAR

V-NECK KNITTED PULLOVER	52
V-NECK KNITTED CARDIGAN	52
V-NECK SLEEVELESS KNITTED PULLOVER	53

FLEECE

OUTDOOR FLEECE	55
----------------	----

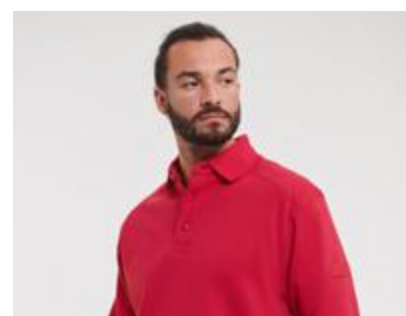


JACKETS

CROSS JACKET	58
HOODED NANO JACKET & BODYWARMER	59
BIONIC SOFTSHELL JACKET	62
SOFTSHELL JACKET & GILET	63
ESSENTIAL SOFTSHELL JACKET	65
SMART SOFTSHELL JACKET & GILET	66
SPORTSHELL 5000 JACKET	66
HYDRAPLUS 2000 JACKET	67

WORKWEAR

HEAVY DUTY WORKWEAR T	69
HEAVY DUTY COLLAR & CREW NECK WORKWEAR SWEATSHIRTS	69
WORKWEAR POLYCOTTON TWILL TROUSERS & SHORTS	70
HEAVY DUTY WORKWEAR TROUSERS	70
HEAVY DUTY WORKWEAR GILET	71



DISCOVER HOW
WE WORK

**FOR A
BETTER
TOMORROW**



CERTIFICATIONS & MEMBERSHIPS

MORE INFORMATION ON OUR WEBSITE RUSSELLEUROPE.COM

Safe Products



OEKO-TEX® CERTIFICATION

All our garments – whether manufactured by us or outsourced – are tested for harmful substances and certified according to STANDARD 100 by OEKO-TEX®. www.Oeko-Tex.com

Respectful Workplaces



Russell Europe is member of amfori, the leading global business association for open and sustainable trade. We improve the social performance of our supply chain via amfori BSCI. For more information visit www.amfori.org

Sustainable Sourcing



Driving awareness on environmental issues and quality are the core values of our Russell Pure Organic® products. We want to support your efforts in making the world a better place by offering eco-friendly, long lasting and fair produced clothing.

MADE IN OUR OWN FACILITIES



Unlike many other brands, Russell Europe produces the majority of its T-Shirts in its own production facilities in Morocco. We are proud to have this opportunity and to have a fantastic and dedicated team in Morocco.



FAIR COMPENSATION

We believe every worker has a right to compensation for a regular work week that is sufficient to meet the worker's basic needs and provide some discretionary income.

We believe overtime should not be required to accomplish this.

WE REACHED OUR WATER TARGET EARLY

Since 2018, we have achieved a 13.8% reduction in water intensity, or the amount of water used per pound of fabric – achieving our goal of a 10% reduction ahead of 2030.



ZERO WASTE

Our sustained commitment to waste reduction means all our facilities are zero waste. This vital achievement is made possible through a system of process optimisation at every location that looks to better utilise all fabric – from cutting patterns that minimise scraps to implementing new design software to reduce samples.

SO CLOSE

Immediate vicinity to Europe means:

- » shorter transport routes*
- » lower CO² footprint*
- » faster availability*
- » Direct container shipments to our customers

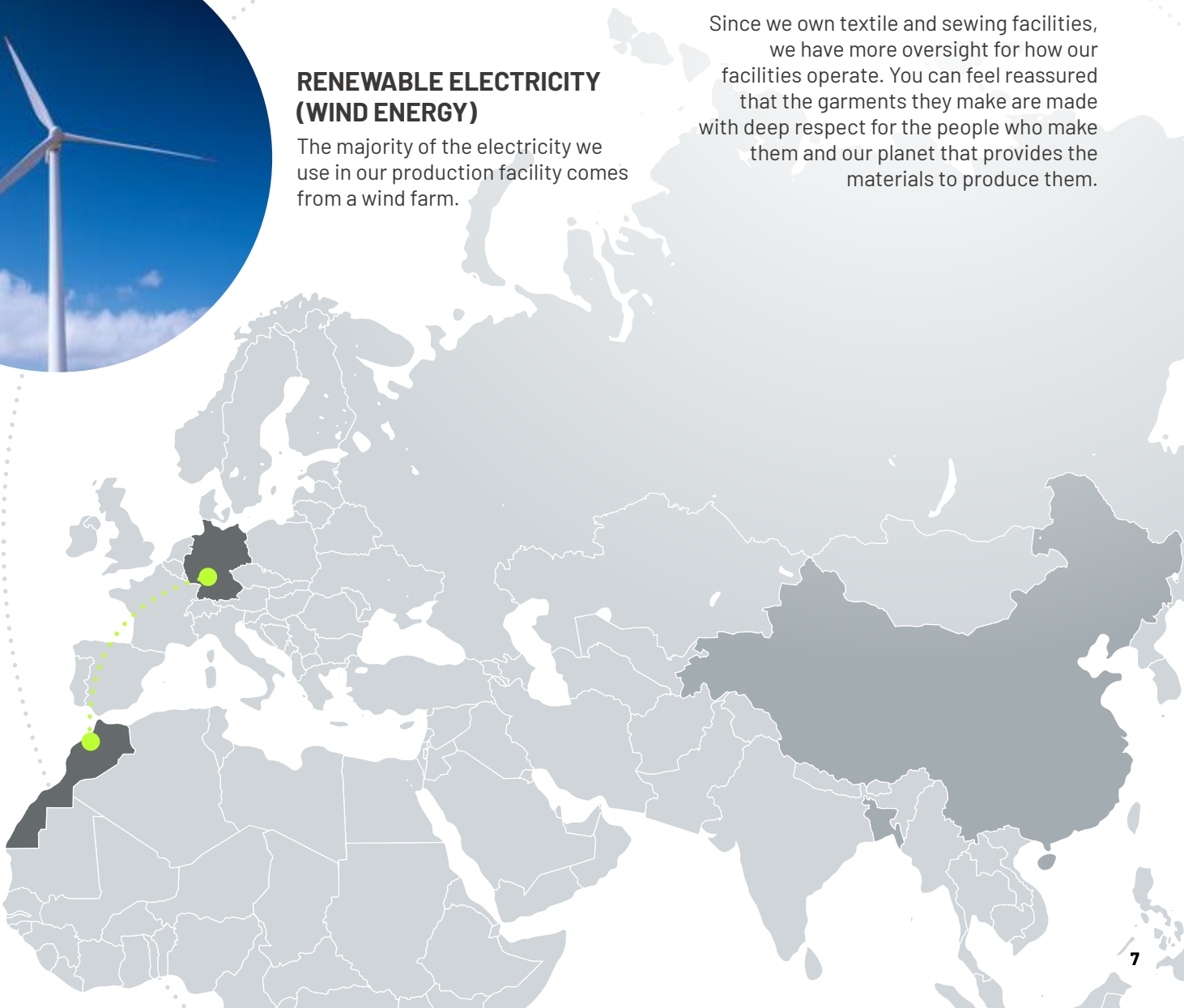
* over 80% shorter transport routes. For comparison:
Casablanca (MA) - Rotterdam (NL) approx. 3,100 km,
Chittagong (BD) - Rotterdam (NL) approx. 16,500 km,
Dalian (CN) - Rotterdam (NL) approx. 23,200 km

CLOSE TO HOME!

Since we own textile and sewing facilities, we have more oversight for how our facilities operate. You can feel reassured that the garments they make are made with deep respect for the people who make them and our planet that provides the materials to produce them.

RENEWABLE ELECTRICITY (WIND ENERGY)

The majority of the electricity we use in our production facility comes from a wind farm.



SOURCING & TRANSPARENCY



Everything that we do not manufacture ourselves,
we source from our long-standing production partners.



SUPPLIER TRANSPARENCY

Today, we already disclose 100% of our Tier 1
suppliers, owned facilities and licensees' factories.





SOURCING DONE RIGHT

Our goal is to have full transparency on all our products right back to the raw materials. We have already mapped our cotton supply back to raw materials.

We have a commitment to map our supply chain back to raw materials by 2025. With 45% of engaged suppliers mapped to raw materials in 2022, we are on track to reach our goal.



OUR PARTNERS

ALL OUR SUPPLIERS

- » are members of Amfori BSCI
- » produce Oeko-Tex® certified products
- » commit to adhering to our strict Code of Conduct



Download Sustainability Report

A woman with light brown hair tied back is sitting cross-legged on a red running track. She is wearing a white short-sleeved t-shirt, black shorts, white socks with three black stripes, and white sneakers with tan soles. She is looking directly at the camera with a neutral expression. The background shows the curved lanes of the track under bright sunlight.

**NEW
STYLE**
2025

**LADIES'
AUTHENTIC
CLASSIC T**
180F

SEE PAGE 18 FOR MORE INFORMATION





AVAILABLE IN
8 COLOURS

SIZES
XS - 2XL

CR

60

BH

FN

LX

CG

36

30



THE FAMILY IS COMPLETE!

The 180F Ladies' Authentic Classic T is our newest addition to the highly popular Authentic T-Shirt collection.



The Authentic T family is now complete, with products for ladies, men and kids, and styles from shortsleeve to longsleeve and lightweight to heavyweight.

All made from the customary premium ringspun cotton and boasting the same refined details, such as a shoulder-to-shoulder tape, 1x1 rib knit collar with single needle topstitching and a tear away label. Like all the other Authentic T-Shirt bestsellers, the Ladies' Authentic Classic T will be an instant hit with teams looking for quality and versatility.



available for the

**AUTHENTIC
CLASSIC T
180M**

SEE PAGE 18 FOR
MORE INFORMATION

KT
Tan





NEW COLOUR

2025

KT
Tan

WARM AND BALANCED

TAN is a trendy safe bet



Elevate your everyday style with our new warm and versatile shade that perfectly balances casual comfort with elegance.

TAN is the ideal neutral – effortlessly complementing a wide range of outfits while adding a touch of earthy warmth to your wardrobe. The colour TAN conveys grounding and stability by evoking natural materials such as leather and wood.

TAN stands for practicality and trustworthiness. Whether you're pairing it with jeans for a laid-back look or layering it under a jacket for a more polished ensemble, a TAN T-Shirt is a must-have for those who appreciate understated sophistication.

**MEN'S AUTHENTIC
HOODED SWEAT
265M**

SEE PAGE 30 FOR MORE INFORMATION

*Available for
our most popular*
**AUTHENTIC
SWEATSHIRTS**

**THE AUTHENTIC
SWEAT
262M**

SEE PAGE 30 FOR MORE INFORMATION





NEW
in 2025

60
Natural

NATURALLY AUTHENTIC

Introducing the colour NATURAL as a new option for everybody's favourite Russell Sweatshirts!



Perfect for people who appreciate subtle elegance in a casual garment.
The understated, soft and naturally light shade coordinates with any outfit, making it ideal for layering or wearing on its own.

NATURAL is the perfect canvas for making decorations in bold or dark corporate and team colours stand out.
NATURAL adds a touch of sophistication to your look, making it an essential addition to your collection whether you're creating casual sports team or corporate outfits.



T-SHIRTS

THE TEAMWEAR STAPLE

From Classic T-Shirts to Pure Organic and Workwear, we have the perfect selection in brilliant colours and sizes for everyone – big or small. If you're looking for the ultimate T-Shirt, Russell Ts are the right choice for you!

AUTHENTIC CLASSIC T & CLASSIC LONG SLEEVE T

180



MADE IN
OUR OWN
FACILITIES

MATERIAL / WEIGHT

100% Ringspun Cotton
Light Oxford: 93% Cotton, 7% Viscose
White: 175g/m², Colours: 180g/m²

PACKING

Pack 12/Carton 72
180L: Pack12/Carton 72
180L 4XL: Carton 36

180M AUTHENTIC CLASSIC T

SIZES XS-4XL

- » Classic Fit
- » Single Jersey
- » Shoulder to shoulder neck tape
- » 1x1 rib knit collar with top stitch
- » Tubular construction

3XL & 4XL only available in Black, Bottle Green, Bright Royal, French Navy, White, Classic Red, Convoy Grey, Natural, Olive, Mocha, Indigo Blue and Mineral Blue



180F LADIES' AUTHENTIC CLASSIC T

SIZES XS-2XL

- » Crew neck
- » 1x1 rib knit collar with single needle top stitching
- » Shaped side seams for a feminine fit
- » Shoulder to shoulder neck tape
- » Tear away label



180B KIDS AUTHENTIC CLASSIC T

SIZES 1-12 YEARS

- » Classic Fit
- » Single Jersey
- » Shoulder to shoulder neck tape
- » 1x1 rib knit collar with top stitch
- » Name label
- » Tubular construction



180L AUTHENTIC CLASSIC LONG SLEEVE T

SIZES XS-4XL

- » Classic Fit
- » Single Jersey
- » Shoulder to shoulder neck tape
- » 1x1 rib knit collar with top stitch
- » Tubular construction



AUTHENTIC HEAVYWEIGHT T

215



MADE IN
OUR OWN
FACILITIES

MATERIAL / WEIGHT

100% Combed Ringspun Cotton
White: 210g/m², Colours: 215g/m²

PACKING

Pack 12/Carton 72

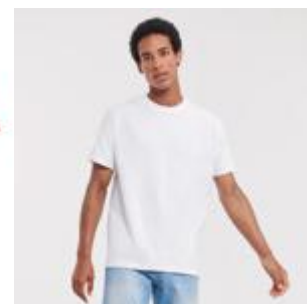
215M AUTHENTIC HEAVYWEIGHT T

SIZES S-2XL

- » Classic Fit
- » Single Jersey
- » Shoulder to shoulder neck tape
- » 1x1 rib knit collar with top stitch
- » Tubular construction



60°
WASHABLE



**NEW
T-SHIRT**
180F

180F



**NEW
COLOUR**

KT
Tan

180M

PURE ORGANIC T

108



MATERIAL / WEIGHT

100% Combed Ringspun Cotton
(organic) Light Oxford: 97% Combed
Ringspun Cotton (organic), 3% Viscose
160g/m²

PACKING

Pack 12/Carton 72

108M MEN'S PURE ORGANIC T

SIZES XS-3XL

- » Contemporary shaped fit
- » Single Jersey
- » Custom-developed shoulder to shoulder tape offering greater stability and an elegant look
- » Label free: Small size label in the neck (incl. product number)
- » Narrow collar band with LYCRA®
- » Comfortable cool and light texture
- » Smooth surface for best print results



108F LADIES' PURE ORGANIC T

SIZES XS-2XL

- » Contemporary shaped fit
- » Single Jersey
- » Custom-developed shoulder to shoulder tape offering greater stability and an elegant look
- » Label free: Small size label in the neck (incl. product number)
- » Narrow collar band with LYCRA®
- » Comfortable cool and light texture
- » Smooth surface for best print results



108M • 108F

A man with long dark hair and a beard, wearing a light-colored t-shirt, stands next to a woman with long brown hair wearing a dark green t-shirt. The woman has her hand on the man's shoulder. They are both looking at the camera. The background is a textured, mottled brown.

RENEWABLE ELECTRICITY

WIND ENERGY

The majority of the electricity we use in our production facility comes from a wind farm.



108M • 108F



SPORTINESS MEETS ELEGANCE

Its success story is no surprise.

Light and durable yet elegant without being overdressed,
a polo shirt is a true all-rounder and a score for any team outfit.

CLASSIC POLYCOTTON POLO

539



MATERIAL / WEIGHT

65% Polyester, 35% Ringspun Cotton
White: 210g/m², Colours: 215g/m²

PACKING

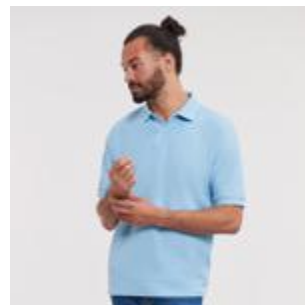
Pack 6/ Carton 36

539M MEN'S CLASSIC POLYCOTTON POLO

SIZES XS-6XL

- » Classic Fit
- » Fine honeycomb pique structure
- » Double yarn construction
- » Reinforced shoulder seams with neck tape
- » Classic style flat knit cuffs
- » Twin needle hem at bottom for added stability

3XL-4XL only available in Bottle Green, Black, Bright Royal, Classic Red, French Navy, Light Oxford and White. 5XL & 6XL only available in Black, Bright Royal, French Navy and White

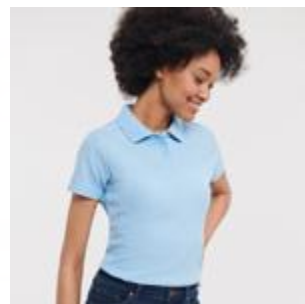


539F LADIES' CLASSIC POLYCOTTON POLO

SIZES XS-4XL

- » Classic Fit
- » Fine honeycomb pique structure
- » Double yarn construction
- » Reinforced shoulder seams with neck tape
- » Open sleeve with twin needle hem
- » Twin needle hem at bottom for added stability

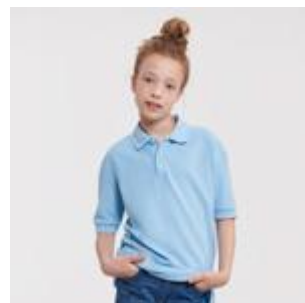
3XL & 4XL only available in Bottle Green, Bright Royal and French Navy



539B KIDS CLASSIC POLYCOTTON POLO

SIZES 1-12 YEARS

- » Classic Fit
- » Fine honeycomb pique structure
- » Double yarn construction
- » Reinforced shoulder seams with neck tape
- » Classic style flat knit cuffs
- » Name label
- » Twin needle hem at bottom for added stability



HARDWEARING POLYCOTTON POLO

599



MATERIAL / WEIGHT

65% Polyester, 35% Ringspun Cotton
White: 210g/m², Colours: 215g/m²

PACKING

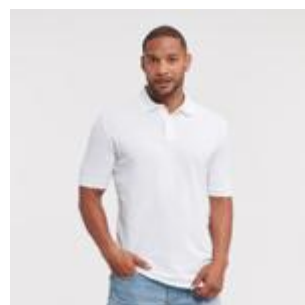
Pack 6/ Carton 36

599M HARDWEARING POLYCOTTON POLO

SIZES XS-6XL

- » Classic fit with side vents
- » Side vents for ease of fit
- » Reinforced shoulder seams with neck tape
- » Flat knit collar and cuffs with double ripple effect
- » Twin needle hem at bottom for added stability

5XL & 6XL only available in Black, Bottle Green, Bright Royal, French Navy and White



STRETCH POLO

566



MATERIAL / WEIGHT

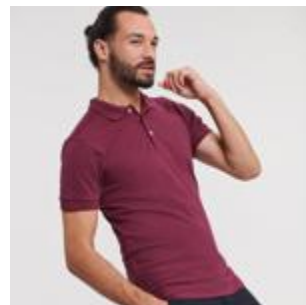
95% Combed Ringspun Cotton; 5% LYCRA® Light Oxford: 88% Combed Ringspun Cotton, 7% Viscose, 5% LYCRA®; White: 205g/m², Colours: 210g/m²

PACKING

Pack 6/Carton 36

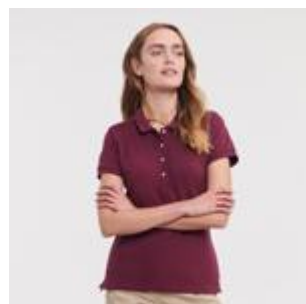
566M MEN'S FITTED STRETCH POLO FIT **FITTED** • SIZES **S-3XL**

- » Slim leaf collar
- » Ribbed cuffs
- » Strip of self-colour fabric along shoulder seam
- » Shorter side vents with herringbone tape
- » Soft handfeel
- » Contrast buttons



566F LADIES' FITTED STRETCH POLO FIT **FITTED** • SIZES **XS-2XL**

- » Slim leaf collar
- » Ribbed cuffs
- » Strip of self-colour fabric along shoulder seam
- » Shorter side vents with herringbone tape
- » Soft handfeel
- » Slimmer, 4 button placket
- » Contrast buttons



566M • 566F

CLASSIC COTTON POLO

569



MATERIAL / WEIGHT

100% Ringspun Cotton
White: 195g/m², Colours: 200g/m²

PACKING

Pack 6/ Carton 36

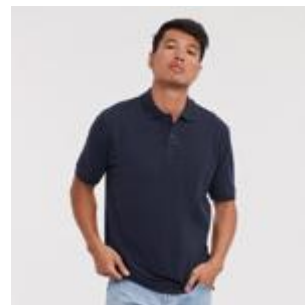
569M MEN'S CLASSIC COTTON POLO

SIZES XS-4XL

- » Classic fit with side vents
- » Side vents for ease of fit
- » Reinforced shoulder seams with neck tape
- » Classic style flat knit cuffs

- » Twin needle hem at bottom for added stability

XS only available in French Navy and White. 3XL & 4XL only available in Black, French Navy and White



ULTIMATE COTTON POLO

577



MATERIAL / WEIGHT

100% Combed Ringspun Cotton
White: 210g/m², Colours: 215g/m²

PACKING

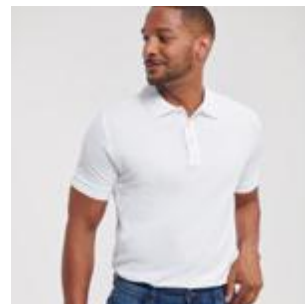
Pack 6/ Carton 36


577M MEN'S ULTIMATE COTTON POLO

SIZES XS-4XL

- » Classic Fit
- » Contemporary cut
- » Fine honeycomb pique structure
- » Reinforced shoulder seams with herringbone neck tape

- » Side vents with internal herringbone taping for added stability and better fit
- » Classic style flat knit cuffs
- » Pre-shrunk and suitable for wash up to 60°C





RUSSELL STANDS FOR QUALITY AND SUSTAINABILITY.

The most sustainable products are the ones you don't have to keep replacing.

577M

AUTHENTIC ECO POLO

570



MATERIAL / WEIGHT

65% Polyester (recycled),
35% Ringspun Cotton
White: 170 g/m², Colours: 180 g/m²

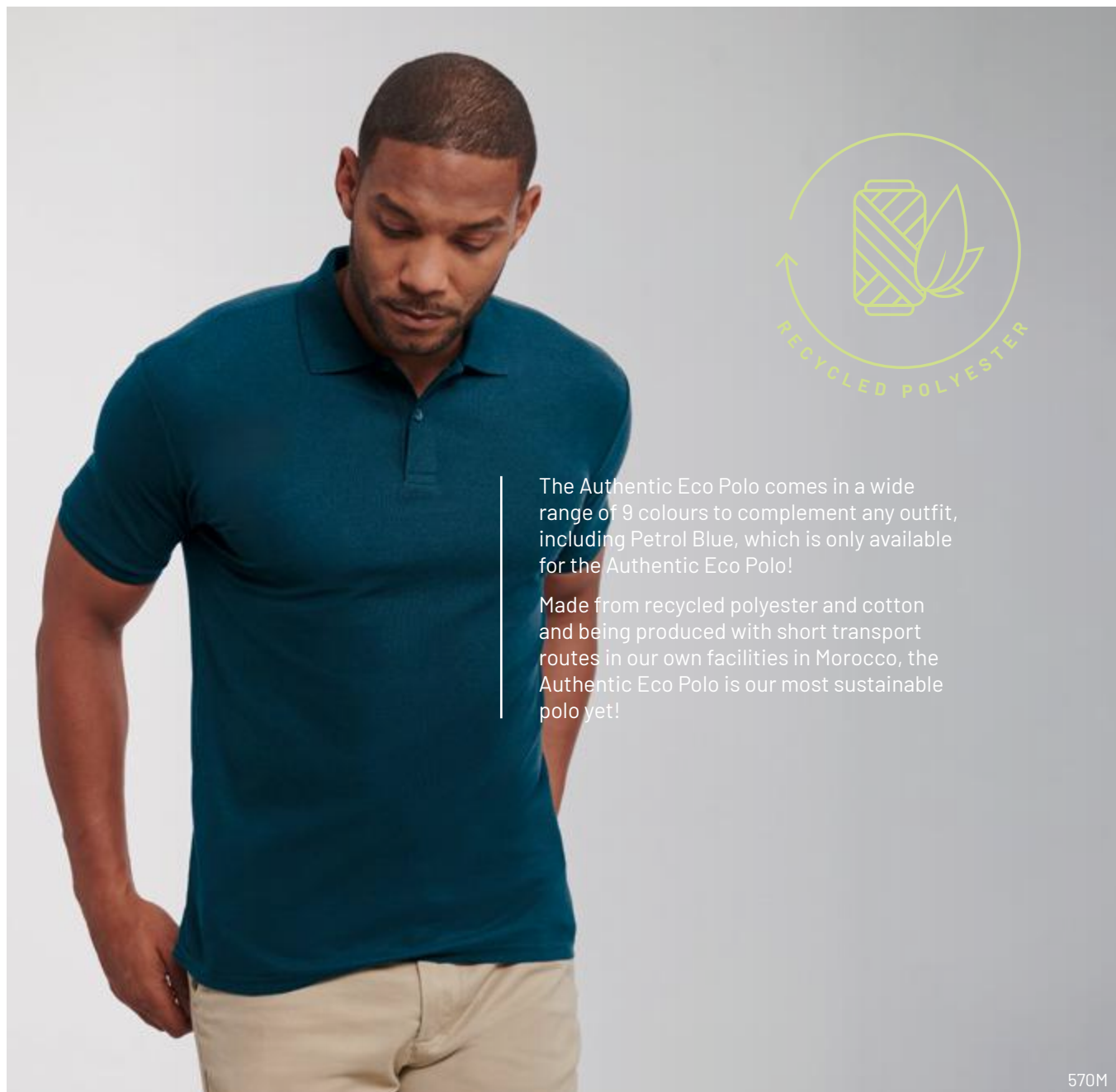
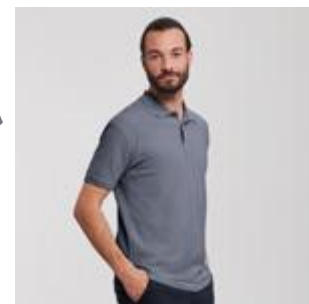
PACKING

Pack 6/ Carton 36

570M AUTHENTIC ECO POLO

SIZES XS-3XL


- » Classic Fit
- » Tear-Away label
- » Dyed-to-match buttons
- » 2-button placket
- » Reinforced shoulder seams with neck tape



The Authentic Eco Polo comes in a wide range of 9 colours to complement any outfit, including Petrol Blue, which is only available for the Authentic Eco Polo!

Made from recycled polyester and cotton and being produced with short transport routes in our own facilities in Morocco, the Authentic Eco Polo is our most sustainable polo yet!

570M

A young man and woman are posing on a baseball field. The man, on the left, is wearing a green hoodie and black pants, with his arm around the woman's shoulder. The woman, on the right, is wearing a maroon zip-up hoodie and white shorts. They are both smiling at the camera. In the background, there is a blue sky and a chain-link fence.

OUR INVENTION THAT STARTED IT ALL

When Benjamin Russell introduced his design for an all cotton sweater, he pioneered sports teamwear forever. This original spirit of the sweatshirt remains a key moment in team culture.



SWEATSHIRTS



AUTHENTIC SWEATS

262•265•266•267•270•268



MATERIAL / WEIGHT

80% Combed Ringspun Cotton, 20% Polyester 100% cotton face yarn (3-thread-construction)
280g/m²

PACKING

Pack 3/ Carton 24
Pack 6/ Carton 36 (262M)

262M THE AUTHENTIC SWEAT

SIZES XS-5XL

- » Straighter cut for a modern look
- » 100% cotton face yarn provides the best surface for decoration
- » Herringbone neck tape for comfort and stability
- » Side seams improve fit

4XL only available in Black, French Navy, Light Oxford and Convoy Grey
5XL only available for Black and French Navy



265M MEN'S AUTHENTIC HOODED SWEAT

SIZES XS-5XL

- » Straighter cut for a modern look
- » 100% cotton face yarn provides the best surface for decoration
- » Flat, chunky drawcords
- » Double layer hood with cover seam drawcord channel
- » Kangaroo pockets

4XL only available in Black, French Navy, Light Oxford and Convoy Grey
5XL only available for Black and French Navy



265F LADIES' AUTHENTIC HOODED SWEAT

SIZES XS-2XL

- » Modern feminine tailored fit
- » 100% cotton face yarn provides the best surface for decoration
- » Slimmer shoulders and leaner arms
- » Flat, chunky drawcords
- » Double layer hood with cover seam drawcord channel
- » Kangaroo pockets

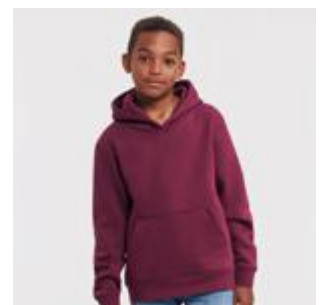
2XL only available in Black, French Navy and Light Oxford



265B KIDS AUTHENTIC HOODED SWEAT

SIZES 3-14 YEARS

- » Straighter cut for a modern look
- » 100% cotton face yarn provides the best surface for decoration
- » Flat, chunky drawcords
- » Double layered hood
- » Kangaroo pockets
- » No drawcords



268M MEN'S AUTHENTIC JOG PANTS

SIZES S-2XL

- » Contemporary fit and modern design
- » 100% cotton face yarn provides the best surface for decoration
- » Self-fabric welt pockets with concealed zip fastening
- » Back patch pocket
- » Flat, chunky drawcords
- » Rib at cuff and waistband





262M • 265M

266M MEN'S AUTHENTIC ZIPPED HOOD JACKET

SIZES XS-5XL

- » Straighter cut for a modern look
- » 100% cotton face yarn provides the best surface for decoration
- » Flat, chunky drawcords
- » Side seam pockets
- » YKK Metal (Antique Silver) Full Zipper
- » Kissing (covered) zip for full cross body decoration
- » Double layer hood with cover seam drawcord channel

4XL only available in Black, French Navy, Light Oxford and Convo Grey
5XL only available for Black and French Navy



266F LADIES' AUTHENTIC ZIPPED HOOD JACKET

SIZES XS-2XL

- » Modern feminine tailored fit
- » 100% cotton face yarn provides the best surface for decoration
- » Flat, chunky drawcords
- » Double layer hood with cover seam drawcord channel
- » Side seam pockets
- » YKK Metal (Antique Silver) Full Zipper
- » Kissing (covered) zip for full cross body decoration

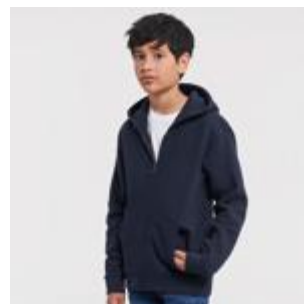
2XL only available in Black, French Navy and Light Oxford



266B KIDS AUTHENTIC ZIPPED HOOD JACKET

SIZES 3-14 YEARS

- » Straighter cut for a modern look
- » 100% cotton face yarn provides the best surface for decoration
- » No drawcords
- » Double layered hood
- » Side seam pockets
- » YKK Metal (Antique Silver) Full Zipper
- » Kissing (covered) zip for full cross body decoration
- » Top stitching for a greater seam resistance



267M MEN'S AUTHENTIC SWEAT JACKET

SIZES XS-4XL

- » Straighter cut for a modern look
- » 100% cotton face yarn provides the best surface for decoration
- » Herringbone neck tape for comfort and stability
- » Side seam pockets
- » Welt pocket workmanship for a smooth and soft pocket entry
- » Self-fabric cadet collar
- » YKK Metal (Antique Silver) Full Zipper

4XL only available in Black, French Navy and Light Oxford



267F LADIES' AUTHENTIC SWEAT JACKET

SIZES XS-XL

- » Modern feminine tailored fit
- » 100% cotton face yarn provides the best surface for decoration
- » Herringbone neck tape for comfort and stability
- » Side seam pockets
- » Welt pocket workmanship for a smooth and soft pocket entry
- » Self-fabric cadet collar
- » YKK Metal (Antique Silver) Full Zipper



270M AUTHENTIC QUARTER ZIP SWEAT

SIZES XS-4XL

- » 100% cotton face yarn provides the best surface for decoration
- » Herringbone neck tape for comfort and stability with front facing shoulder seams
- » Brushed fleece
- » Kissing (covered) zip for full cross body decoration
- » Self-fabric cadet collar
- » YKK Metal (Antique Silver) ¼ zip

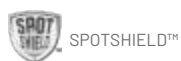




262M • 265M • 266F

CLASSIC SWEATSHIRT

762



MATERIAL / WEIGHT

50% Combed Ringspun Cotton, 50% Polyester
295g/m²

PACKING

Pack 6/ Carton 36

762M CLASSIC SWEATSHIRT

SIZES XS-4XL

- » SpotShield™ stain resistant coating
- » Tubular body construction for added stability
- » Herringbone neck tape for comfort
- » Raglan sleeve

- » 1x1 rib trim with elastane on hem and cuffs

3XL & 4XL only available in Bright Royal, Bottle Green and French Navy



762B KIDS CLASSIC SWEATSHIRT

SIZES 1-12 YEARS

- » SpotShield™ stain resistant coating
- » Tubular body construction for added stability
- » Herringbone neck tape for comfort
- » Raglan sleeve

- » 1x1 rib trim with elastane on hem and cuffs
- » Name label



762M



575M

HOODED SWEATSHIRT

575



MATERIAL / WEIGHT

50% Combed Ringspun Cotton, 50% Polyester
295g/m²

PACKING

Pack 6/Carton 24

575M HOODED SWEATSHIRT

SIZES XS-2XL

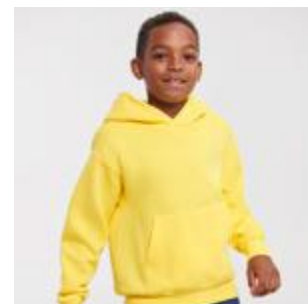
- » Straighter cut for a modern look
- » Herringbone neck tape for comfort and stability
- » Double layer hood with cover seam drawcord channel
- » shoulders and leaner arms
- » Flat, chunky drawcords
- » Kangaroo pocket with bartacks



575B KIDS HOODED SWEATSHIRT

SIZES 3-12 YEARS

- » Straighter cut for a modern look
- » Herringbone neck tape for comfort and stability
- » Double layer hood with cover seam drawcord channel
- » Slimmer shoulders and leaner arms
- » No drawcord in line with health and safety legislation
- » Kangaroo pocket with bartacks



SWEAT PANTS

750



MATERIAL / WEIGHT

50% Combed Ringspun Cotton, 50% Polyester
295g/m²

PACKING

Pack 6/Carton 36

750B KIDS SWEAT PANTS

SIZES 3-12 YEARS

- » Elasticated waistband and leg ends
- » Side pockets
- » No drawcord in line with health and safety legislation





SHIRTS & BLOUSES

FROM RUGGED BUSINESS CASUAL TO SMART LOOKS AND FORMAL STYLES

Russell Shirts and Blouses cover the full range of needs as diverse as the whole of your team.



POPLIN SHIRTS

The perfect blend of elegance and versatility, our Poplin shirts are crafted to deliver timeless style and exceptional comfort for any occasion.

POLYCOTTON POPLIN SHIRT

934•935•924



EC Easy Care

MATERIAL / WEIGHT

65% Polyester, 35% Cotton Poplin
White: 110g/m², Colours: 105g/m²

PACKING

Pack 1/ Carton 12

934M MEN'S LONG SLEEVE CLASSIC POLYCOTTON POPLIN SHIRT FIT **CLASSIC** • SIZES **S-4XL**

- » Easy Care
- » Left chest pocket
- » Curved hem
- » Stiffened Kent boned collar
- » Back yoke with 2 side pleats
- » Rounded 2 button adjustable cuffs



934F LADIES' LONG SLEEVE CLASSIC POLYCOTTON POPLIN SHIRT FIT **CLASSIC** • SIZES **XS-4XL**

- » Easy Care
- » Left chest pocket
- » Curved hem
- » Classic Collar
- » Rounded 2 button adjustable cuffs



935M MEN'S SHORT SLEEVE CLASSIC POLYCOTTON POPLIN SHIRT FIT **CLASSIC** • SIZES **S-4XL**

- » Easy Care
- » Left chest pocket
- » Curved hem
- » Stiffened Kent boned collar
- » Back yoke with 2 side pleats



935F LADIES' SHORT SLEEVE CLASSIC POLYCOTTON POPLIN SHIRT FIT **CLASSIC** • SIZES **XS-4XL**

- » Easy Care
- » Left chest pocket
- » Curved hem
- » Classic Collar



924M MEN'S LONG SLEEVE TAILORED POLYCOTTON POPLIN SHIRT
FIT **TAILORED** • SIZES **S-4XL**

- » Easy Care
- » Curved hem
- » Stiffened Kent boned collar
- » Rounded 2 button adjustable cuffs with option for cuff links



924F LADIES' LONG SLEEVE FITTED POLYCOTTON POPLIN SHIRT
FIT **FITTED** • SIZES **XS-4XL**

- » Easy Care
- » Curved hem
- » Stylish yoke design
- » Concealed placket
- » Darts on bust, front hem and back panel for fitted shape
- » Decorative top stitch on darts
- » Rounded double buttoned cuffs



STRETCH SHIRT

946•947



EC Easy Care

MATERIAL / WEIGHT
97% Cotton, 3% Elastane Poplin
140g/m²

PACKING
Pack 1/ Carton 12

946M MEN'S LONG SLEEVE FITTED STRETCH SHIRT
FIT **FITTED** • SIZES **S-4XL**

- » Easy Care
- » Curved hem
- » Stiffened New Kent boned collar
- » Mitred double buttoned cuffs



946F LADIES' 3/4 SLEEVE FITTED STRETCH SHIRT
FIT **FITTED** • SIZES **XS-2XL**

- » Easy Care
- » Curved hem
- » Darts on bust front hem and back panel for fitted shape
- » Stylish elbow length ¾ sleeve with split cuffs



947M MEN'S SHORT SLEEVE FITTED STRETCH SHIRT
FIT **FITTED** • SIZES **S-4XL**

- » Easy Care
- » Curved hem
- » Stiffened New Kent boned collar



PURE COTTON POPLIN SHIRT

936



EC Easy Care

MATERIAL / WEIGHT

100% Cotton Poplin
White: 120g/m², Colours: 125g/m²

PACKING

Pack 1/ Carton 12

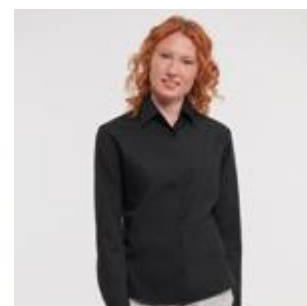
936M MEN'S LONG SLEEVE CLASSIC PURE COTTON POPLIN SHIRT FIT **CLASSIC** • SIZES **S-4XL**

- » Easy Care
- » Left chest pocket
- » Classic Kent boned collar
- » Back yoke with 2 side pleats
- » Rounded 2 button adjustable cuffs
- » Straight hem



936F LADIES' LONG SLEEVE CLASSIC PURE COTTON POPLIN SHIRT FIT **CLASSIC** • SIZES **XS-4XL**

- » Easy Care
- » Left chest pocket
- » Classic Collar
- » Rounded 2 button adjustable cuffs
- » Curved hem



ULTIMATE STRETCH SHIRT

960



EC Easy Care



MATERIAL / WEIGHT

75% Cotton, 25% Elastomultiester
(LYCRA® T400® fibre) Poplin
White: 125g/m², Colours: 130g/m²

PACKING

Pack 1/ Carton 12

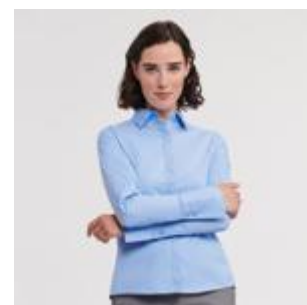
960M MEN'S LONG SLEEVE FITTED ULTIMATE STRETCH SHIRT FIT **FITTED** • SIZES **S-4XL**

- » Easy Care, durable fabric and longer fit
- » Excellent shape retention for a lasting fit
- » Moisture management for cool comfort
- » Stiffened New Kent boned collar
- » Square edged 2 button adjustable cuffs, with option for cuff links



960F LADIES' LONG SLEEVE FITTED ULTIMATE STRETCH SHIRT FIT **FITTED** SIZES **XS-4XL**

- » Easy Care, durable fabric and longer fit
- » Excellent shape retention for a lasting fit
- » Moisture management for cool comfort
- » Neat modern collar
- » Princess cut
- » Cocktail cuffs with 2 button fastening with extended gauntlet





OXFORD SHIRTS

Our Oxford range allows everyone to look their best while presenting a smart and consistent appearance.

OXFORD SHIRT

922·923·932·933



EC Easy Care

MATERIAL / WEIGHT

70% Cotton, 30% Polyester Oxford
White: 130g/m², Colours: 135g/m²

PACKING

Pack 1/ Carton 12

922M MEN'S LONG SLEEVE TAILORED OXFORD SHIRT

FIT **TAILORED** • SIZES **S-4XL**

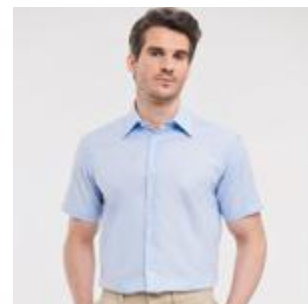
- » Easy Care
- » Curved hem
- » Stiffened Kent boned collar
- » Rounded 2 button adjustable cuffs, with option for cuff links



923M MEN'S SHORT SLEEVE TAILORED OXFORD SHIRT

FIT **TAILORED** • SIZES **S-4XL**

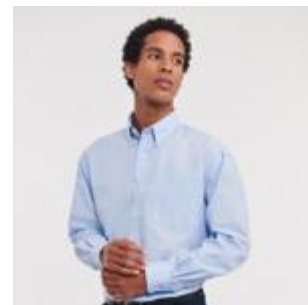
- » Easy Care
- » Curved hem
- » Stiffened Kent boned collar



932M MEN'S LONG SLEEVE CLASSIC OXFORD SHIRT

FIT **CLASSIC** • SIZES **S-6XL**

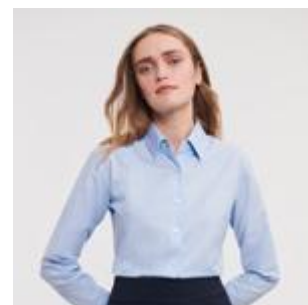
- » Easy Care
- » Curved hem
- » Button down collar
- » Back yoke with 2 side pleats
- » Left chest pocket
- » Rounded 2 button adjustable cuffs



932F LADIES' LONG SLEEVE TAILORED OXFORD SHIRT

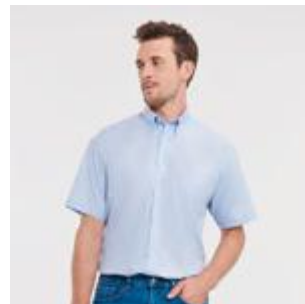
FIT **TAILORED** • SIZES **XS-6XL**

- » Easy Care
- » Curved hem
- » 2 button collar stand with classic shaped collar
- » Darts at bustline and back for tailored fit
- » Rounded 2 button adjustable cuffs



933M MEN'S SHORT SLEEVE CLASSIC OXFORD SHIRT
FIT **CLASSIC** • SIZES **S-6XL**

- » Easy Care
- » Curved hem
- » Button down collar
- » Back yoke with 2 side pleats
- » Left chest pocket



933F LADIES' SHORT SLEEVE TAILORED OXFORD SHIRT
FIT **TAILORED** • SIZES **XS-6XL**

- » Easy Care
- » Curved hem
- » 2 button collar stand with classic shaped collar
- » Darts at bustline and back for tailored fit



933M



933F



922M • 932F



HERRINGBONE SHIRTS

Our Herringbone shirt is versatile and hard-wearing, providing you with the ideal combination of style and durability.

HERRINGBONE SHIRT

964•962•963



MATERIAL / WEIGHT

84% Cotton, 16%
Polyester Herringbone
White: 125g/m², Colours: 130g/m²

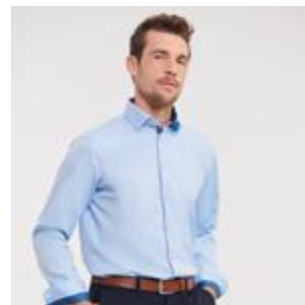
PACKING

Pack 1/ Carton 12

964M MEN'S LONG SLEEVE TAILORED CONTRAST HERRINGBONE SHIRT

FIT **TAILORED** • SIZES **S-4XL**

- » Easy Care
- » Longer fit and Narrow placket
- » Curved hem
- » Under-Button-Down collar
- » Fashionable contrasts: cuffs (inside), collar (inside) with contrast piping
- » Contrasting colours at cuff buttonhole and lowest buttonhole
- » Darts at back improve fit



962M MEN'S LONG SLEEVE TAILORED HERRINGBONE SHIRT

FIT **TAILORED** • SIZES **S-4XL**

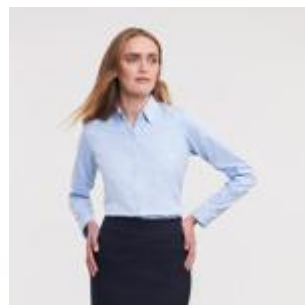
- » Easy Care
- » Longer fit
- » Narrow placket
- » No show through
- » Curved hem
- » Stiffened Kent boned collar
- » Rounded 2 button adjustable cuffs, with option for cuff links



962F LADIES' LONG SLEEVE TAILORED HERRINGBONE SHIRT

FIT **TAILORED** • SIZES **XS-4XL**

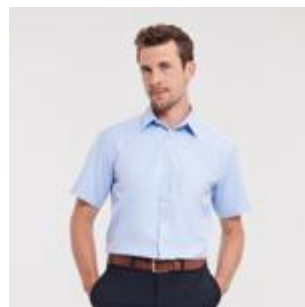
- » Easy Care
- » Longer fit
- » Narrow placket
- » No show through
- » Curved hem
- » Neat modern collar
- » Darts at chest, front and back hem
- » Stylish, narrow cuffs with single button fastening



963M MEN'S SHORT SLEEVE TAILORED HERRINGBONE SHIRT

FIT **TAILORED** • SIZES **S-4XL**

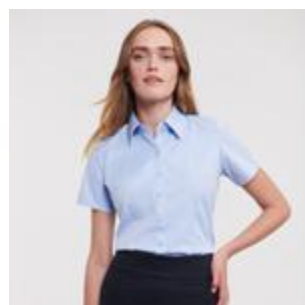
- » Easy Care
- » Longer fit
- » Narrow placket
- » No show through
- » Curved hem
- » Stiffened Kent boned collar



963F LADIES' SHORT SLEEVE TAILORED HERRINGBONE SHIRT

FIT **TAILORED** • SIZES **XS-4XL**

- » Easy Care
- » Longer fit
- » Narrow placket
- » No show through
- » Curved hem
- » Neat modern collar
- » Darts at chest, front and back hem





ULTIMATE NON-IRON SHIRTS

Experience the luxury of our top-of-the-range premium shirt. With a refined and elegant contemporary design, crafted from high-quality compact cotton, we have created a truly non-iron garment.

ULTIMATE NON-IRON SHIRT

956·957·958



MATERIAL / WEIGHT

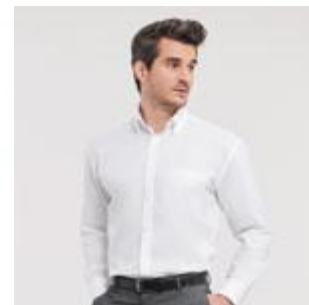
100% Cotton Micro Twill
120g/m²

PACKING

Pack 1/ Carton 12

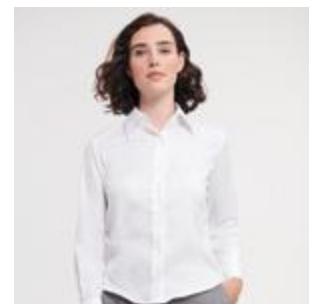
956M MEN'S LONG SLEEVE CLASSIC ULTIMATE NON-IRON SHIRT FIT **CLASSIC** · SIZES **S-4XL**

- » Easy Care
- » Non-iron
- » Curved hem
- » Button down collar
- » Back yoke with 2 side pleats
- » Left chest pocket
- » Contemporary size mitred cuffs, adjustable with two buttons and with option for cuff links



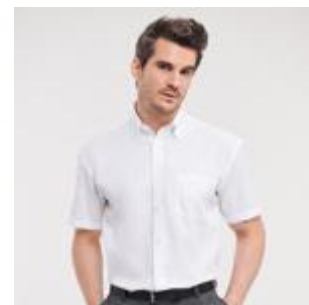
956F LADIES' LONG SLEEVE TAILORED ULTIMATE NON-IRON SHIRT FIT **TAILORED** · SIZES **XS-4XL**

- » Easy Care
- » Non-iron
- » Curved hem
- » Stylish and relaxed long edged collar
- » Twin button fastening
- » Cocktail cuffs with single button fastening with extended gauntlet and option for cuff links



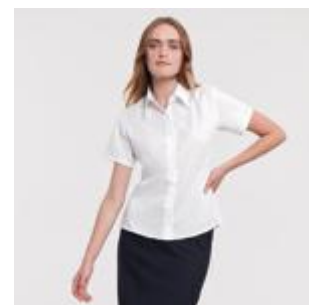
957M MEN'S SHORT SLEEVE CLASSIC ULTIMATE NON-IRON SHIRT FIT **CLASSIC** · SIZES **S-4XL**

- » Easy Care
- » Non-iron
- » Curved hem
- » Button down collar
- » Back yoke with 2 side pleats
- » Left chest pocket



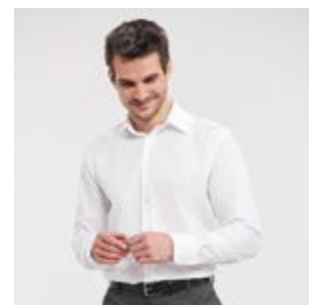
957F LADIES' SHORT SLEEVE TAILORED ULTIMATE NON-IRON SHIRT FIT **TAILORED** · SIZES **XS-4XL**

- » Easy Care
- » Non-iron
- » Curved hem
- » Stylish and relaxed long edged collar
- » Twin button fastening



958M MEN'S LONG SLEEVE TAILORED ULTIMATE NON-IRON SHIRT FIT **TAILORED** · SIZES **S-4XL**

- » Easy Care
- » Non-iron
- » Curved hem
- » Stiffened Kent boned collar
- » Stylish, mitred cuffs, adjustable with two buttons and option for cuff links



MODERN CLASSICS

Stylish layering is what our timeless and easy care knitwear was made for.



KNITWEAR



V-NECK KNITTED PULLOVER

710



EC Easy Care

MATERIAL / WEIGHT

50% Cotton, 50% Acrylic CottonBlend
275g/m²

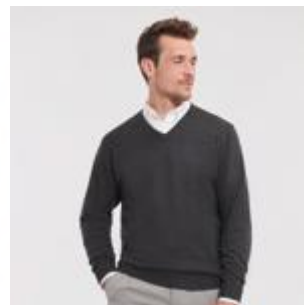
PACKING

Pack 1/ Carton 12

710M MEN'S V-NECK KNITTED PULLOVER

SIZES **XXS-4XL**

- » Classic Fit
- » Contemporary styling
- » Fully fashioned
- » Elastane on ribbed cuffs and waistband trim to retain shape and smart appearance
- » Quick to dry and Easy care



710F LADIES' V-NECK KNITTED PULLOVER

SIZES **XXS-4XL**

- » Classic Fit
- » Contemporary styling
- » Fully fashioned
- » Elastane on ribbed cuffs and waistband trim to retain shape and smart appearance
- » Quick to dry and Easy care



V-NECK KNITTED CARDIGAN

715



EC Easy Care

MATERIAL / WEIGHT

50% Cotton, 50% Acrylic CottonBlend
275g/m²

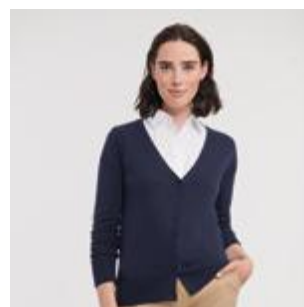
PACKING

Pack 1/ Carton 12

715F LADIES' V-NECK KNITTED CARDIGAN

SIZES **XXS-4XL**

- » Classic Fit
- » Contemporary styling
- » Fully fashioned
- » Elastane on ribbed cuffs and waistband trim to retain shape and smart appearance
- » Quick to dry and Easy care
- » Dyed-to-match buttons



V-NECK SLEEVELESS KNITTED PULLOVER

716



EC Easy Care

MATERIAL / WEIGHT

50% Cotton, 50% Acrylic CottonBlend
275g/m²

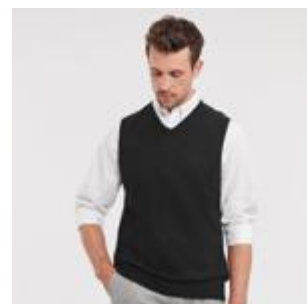
PACKING

Pack 1/ Carton 12

716M V-NECK SLEEVELESS KNITTED PULLOVER

SIZES **XXS-4XL**

- » Classic Fit
- » Contemporary styling
- » Fully fashioned
- » Elastane on ribbed cuffs and waistband trim to retain shape and smart appearance
- » Refined button up fastening with inside facing and dyed-to-match buttons
- » Quick to dry and Easy care



710M



715F



716M

FLEECE

THE LIGHT LAYER

For extra warmth in winter, crisp spring days, chilli summer evenings or misty autumn days. Fleece is a team mate with you all year long.



OUTDOOR FLEECE

872·870·874



MATERIAL / WEIGHT

100% Polyester Anti-Pill Fleece
320g/m²

PACKING

Pack 3/ Carton 24

872M MEN'S OUTDOOR FLEECE GILET

SIZES XS-2XL

- » Cadet collar
- » Side pockets with inside-out zips and inner mesh lining
- » Cord pulls on all zips
- » Side panel construction for modern fit
- » Bungee cord in hem



870M MEN'S FULL ZIP OUTDOOR FLEECE

SIZES XS-4XL

- » Cadet collar
- » Side pockets with inside-out zips and inner mesh lining
- » Cord pulls on all zips
- » Side panel construction for modern fit
- » Bungee cord in hem



870F LADIES' FULL ZIP OUTDOOR FLEECE

SIZES XS-2XL

- » Cadet collar
- » Side pockets with inside-out zips and inner mesh lining
- » Cord pulls on all zips
- » Side panel construction for modern fit
- » Bungee cord in hem

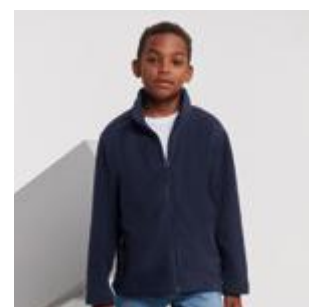


870B KIDS FULL ZIP OUTDOOR FLEECE

SIZES 3-12 YEARS

- » Cadet collar
- » Side pockets with inside-out zips and inner mesh lining
- » Cord pulls on all zips
- » Side panel construction for modern fit

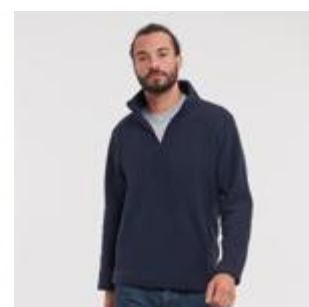
» No drawcord in line with health and safety legislation



874M QUARTER ZIP OUTDOOR FLEECE

SIZES XS-2XL

- » Cadet collar
- » Side pockets with inside-out zips and inner mesh lining
- » Cord pulls on all zips
- » Side panel construction for modern fit
- » Bungee cord in hem







INSULATED JACKETS

THE STRONG PLAYER

Insulated Jackets boast a modern design and environmentally friendly features, such as the sustainable Dupont™ Sorona® padding.

CROSS JACKET 430

Aquapel[™]
NANOTEX[®]

DUPONT[™]
Sorona[®]



Breathable
up to 2000g/m² per 24 hours

Windproof

MATERIAL / WEIGHT
100% Polyester
125g/m²

PACKING
Pack 1/ Carton 12

430M MEN'S CROSS JACKET SIZES S-4XL

- » Contemporary shaped fit
- » High performance DWR fabric treated with Aquapel[™] by Nanotex[®]
- » Fluorine and PFC free
- » Eco-efficient padding by Dupont[™] Sorona[®]

- » Stand up collar with 2 snap fastener and inner storm flap to ward off wind and draught
- » Zipped inside pocket
- » Decorative sleeve flap with snap fastener
- » Discreet decoration access at inner left chest



SUSTAINABLE SOURCING

L Sorona[®] is 37% plant based.



441F

HOODED NANO JACKET & BODYWARMER

440•441

Aquapel[®]
NANOTEX[®]

DUPONT[™]
sorona[®]



Breathable
up to 2000g/m² per 24 hours

Windproof

MATERIAL / WEIGHT
100% Polyester
66g/m²

PACKING
Pack 1/ Carton 12

440M MEN'S HOODED NANO JACKET

SIZES S-4XL

- » High performance DWR fabric treated with Aquapel[™] by Nanotex[®]
- » Fluorine and PFC free
- » Eco-efficient padding by Dupont[™] Sorona[®]
- » Contrasting zips, lining and accents for a refined look
- » Discreet decoration access at inner left chest
- » Stretch binding at sleeves and hem
- » Adjustable 3-parted removable hood



441M MEN'S NANO BODYWARMER

SIZES S-4XL

- » High performance DWR fabric treated with Aquapel[™] by Nanotex[®]
- » Fluorine and PFC free
- » Eco-efficient padding by Dupont[™] Sorona[®]
- » Contrasting zips, lining and accents for a refined look
- » Discreet decoration access at inner left chest
- » Adjustable hem with bungee cord



441F LADIES' NANO BODYWARMER

SIZES XS-3XL

- » High performance DWR fabric treated with Aquapel[™] by Nanotex[®]
- » Fluorine and PFC free
- » Eco-efficient padding by Dupont[™] Sorona[®]
- » Contrasting zips, lining and accents for a refined look
- » Discreet decoration access at inner left chest
- » Adjustable hem with bungee cord





SOFTSHELL JACKET

A RELIABLE TEAM MATE

Smart, functional details for travelling and workwear needs, combined with modern fabric technology and contemporary fits.

BIONIC SOFTSHELL JACKET

410



Breathable
up to 5000g/m² per 24 hours

Windproof

Waterproof material
up to 5000mm

MATERIAL / WEIGHT
94% Polyester, 6% Elastane treated
with Bionic-Finish® Eco (3 layer
softshell jacket)
320g/m²

PACKING
Pack 1/ Carton 12

410M MEN'S BIONIC SOFTSHELL JACKET

- » High performance DWR fabric with hydrophobic membrane
- » Treated with Bionic-Finish® Eco
- » Fluorine and PFC free
- » Contrasting zips and accents for a refined look

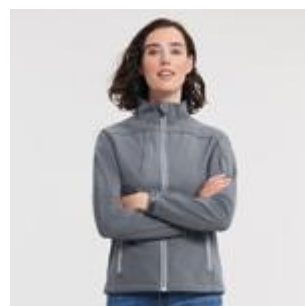
- » High moisture vapour transfer with hydroshell air panels at armpits for enhanced movement and breathability



410F LADIES' BIONIC SOFTSHELL JACKET

- » High performance DWR fabric with hydrophobic membrane
- » Treated with Bionic-Finish® Eco
- » Fluorine and PFC free
- » Contrasting zips and accents for a refined look

- » High moisture vapour transfer with hydroshell air panels at armpits for enhanced movement and breathability



410M



410F

SOFTSHELL JACKET & GILET

140-141



Breathable

Windproof

Waterproof material up to 5000mm

MATERIAL / WEIGHT

92% Polyester, 8% Elastane
(3 layer Softshell fabric)
340g/m²

PACKING

Pack 1/Carton 12

140M MEN'S SOFTSHELL JACKET SIZES XS-4XL

- » Three layers softshell material
- » Side pockets and chest pocket with inner lining, inside-out zippers and cord pulls
- » Full zip with inner storm flap and zip neck protector at collar
- » Drop tail
- » Bungee cord in hem
- » Adjustable cuffs

3XL & 4XL only available in Black, Classic Red, French Navy, Titanium, Bottle Green



140F LADIES' SOFTSHELL JACKET SIZES XS-4XL

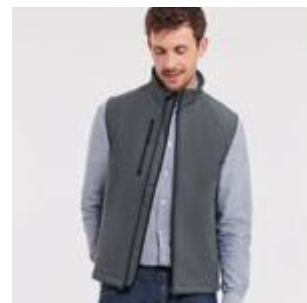
- » Three layers softshell material
- » Side pockets and chest pocket with inner lining, inside-out zippers and cord pulls
- » Full zip with inner storm flap and zip neck protector at collar
- » Drop tail
- » Bungee cord in hem
- » Adjustable cuffs
- » Feminine Fit

3XL & 4XL only available in Black, Classic Red, French Navy, Titanium, Bottle Green



141M MEN'S SOFTSHELL GILET SIZES XS-2XL

- » Three layers softshell material
- » Side pockets and chest pocket with inner lining, inside-out zippers and cord pulls
- » Full zip with inner storm flap and zip neck protector at collar
- » Drop tail
- » Bungee cord in hem
- » Adjustable cuffs





The Essential Softshell Jacket is a 2-layer softshell jacket with great environmentally conscious features!

The outer face material is made from 94% recycled polyester and 6% elastane, and the fleece lining is 100% recycled polyester.

The jacket is treated with a fluorine-free and PFC-free finish from the Bionic-Finish-Eco® brand.

ESSENTIAL SOFTSHELL JACKET

420



MATERIAL / WEIGHT

94% Polyester (recycled), 6% Elastane
290 g/m²

PACKING

Pack 1/ Carton 12

420M ESSENTIAL SOFTSHELL JACKET SIZES XS-3XL

- » Classic Fit
- » Bonded 2-layer softshell material with water-repellent Bionic Eco Finish® treatment (fluorine and PFC-free)
- » Outer face material and inner fleece lining made from recycled polyester
- » Cadet collar
- » Storm flap
- » Side pockets



420M

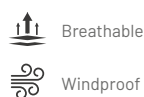


420M



SMART SOFTSHELL JACKET & GILET

040·041



Teflon® is a registered trademark of Du Pont used under license by INVISTA and its affiliates.



MATERIAL / WEIGHT

100% Polyester Knitted Softshell Outer Layer, Bonded Microfleece Inner Layer
315g/m²

PACKING

Pack 1/ Carton 12

040M MEN'S SMART SOFTSHELL JACKET

SIZES XS-3XL

- » Durable Water Repellent Du Pont™ Teflon® Coating
- » Two layer softshell material without membrane
- » 2 zipped pockets
- » Inside-out zippers
- » Cadet collar
- » Drop tail
- » Protection against wind and chill
- » Higher degree of breathability
- » Microfleece lining
- » Back neck tape
- » Bound inside seams on zip
- » Headphone access



040F LADIES' SMART SOFTSHELL JACKET

SIZES XS-3XL

- » Durable Water Repellent Du Pont™ Teflon® Coating
- » Two layer softshell material without membrane
- » 2 zipped pockets
- » Inside-out zippers
- » Cadet collar
- » Drop tail
- » Protection against wind and chill
- » Higher degree of breathability
- » Microfleece lining
- » Back neck tape
- » Bound inside seams on zip
- » Headphone access



041M MEN'S SMART SOFTSHELL GILET

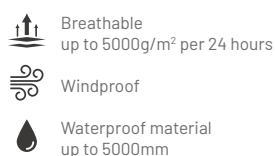
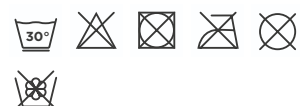
SIZES XS-3XL

- » Durable Water Repellent Du Pont™ Teflon® Coating
- » Two layer softshell material without membrane
- » 2 zipped pockets
- » Inside-out zippers
- » Cadet collar
- » Drop tail
- » Protection against wind and chill
- » Higher degree of breathability
- » Microfleece lining
- » Back neck tape
- » Bound inside seams on zip
- » Headphone access



SPORTSHELL 5000 JACKET

520



MATERIAL / WEIGHT

100% polyester outer, 100% polyester mesh, Advanced Softshell Fabric with Natural Stretch (3 layer bonded hydrophobic substrate)
250g/m²

PACKING

Pack 1/ Carton 12

520M MEN'S SPORTSHELL 5000 JACKET

SIZES XS-2XL

- » Designed for active living: laser cut pockets with matt waterproof zips on sleeve and chest
- » Adjustable cuffs for comfort and maintenance of personal microclimate; YKK centre zipper
- » Ergonomic shape - body fit creates microclimate for maximum thermoregulation and moisture transfer
- » Discreet decoration access at inner left chest



HYDRAPLUS 2000 JACKET

510



Breathable
up to 2000g/m² per 24 hours



Windproof



Waterproof material
up to 2000mm

MATERIAL / WEIGHT

100% Nylon Taslan
190g/m²

PACKING

Pack 1/ Carton 12

510M MEN'S HYDRAPLUS 2000 JACKET

SIZES XS-4XL

- » Active fit with articulated elbows and raglan sleeves
- » Inside-out YKK front zipper with cord pull; double storm flap with additional hook and loop fastener closure
- » Stowaway 3 piece hood and microfleece inner collar
- » Fully lined, with discreet concealed decoration access at hem, bungee cord in hem

3XL & 4XL only available in Black, Classic Red, French Navy and Titanium



040F



041M



520M

WORKWEAR

YOUR TRUSTED WORKMATE

Made for extra durability and practicality, Russell Workwear is a valuable tool for any hands-on team!



HEAVY DUTY WORKWEAR T

010



SPOTSHIELD™

MATERIAL / WEIGHT

100% Combed Ringspun Cotton
Light Oxford: 93% Cotton, 7% Viscose
180g/m²

PACKING

Pack 3/ Carton 36

010M HEAVY DUTY WORKWEAR T

SIZES XS-4XL

- » Classic Fit
- » Single Jersey
- » Double layered shoulder panels and reinforced twin needle stitching at armhole
- » 1x1 rib knit collar with top stitch

- » Double layer yoke, perfect for decoration
- » Enzyme washed ringspun cotton for a softer feel and added comfort



HEAVY DUTY COLLAR & CREW NECK WORKWEAR SWEATSHIRTS

012 • 013



SPOTSHIELD™

MATERIAL / WEIGHT

80% Combed Ringspun Cotton,
20% Polyester
300g/m²

PACKING

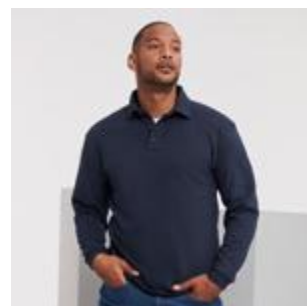
Pack 3/ Carton 24

012M HEAVY DUTY WORKWEAR COLLAR SWEATSHIRT

SIZES XS-4XL

- » SpotShield™ stain resistant coating
- Double layered shoulder panels for superior comfort and stability
- » Locker patch for personalisation
- » Elasticated pen holder on top sleeve
- » Plastic-coated metal buttons

- » Drop tail and compact 1x1 ribbed hem for perfect bottom fit and protection against wind and chill
- » Side darts for better fit and flexibility

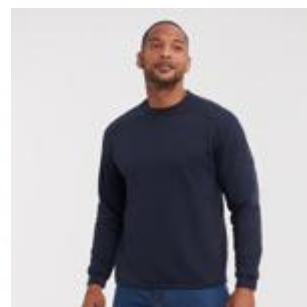


013M HEAVY DUTY WORKWEAR SWEATSHIRT

SIZES XS-4XL

- » SpotShield™ stain resistant coating
- » Double layered shoulder panels for superior comfort and stability
- » Locker patch for personalisation
- » Elasticated pen holder on top sleeve

- » Drop tail and compact 1x1 ribbed hem for perfect bottom fit and protection against wind and chill
- » Side darts for better fit and flexibility



WORKWEAR POLYCOTTON TWILL TROUSERS & SHORTS

001·002



Teflon® is a registered trademark of Du Pont used under license by INVISTA and its affiliates.

MATERIAL / WEIGHT

65% Polyester, 35% Cotton Twill
245g/m²

PACKING

Pack 1/ Carton 12

001M WORKWEAR POLYCOTTON TWILL TROUSERS

- » 2 back pockets with flaps
- » Cargo pocket on right leg
- » Small extra pocket below waistband
- » Expandable waistband for comfortable fit

WAIST SIZES

UK (inches): 28/30/32/34/36/38/40/42/44/
46/48
Europe: 44/46/48/50/52/54/56/58/60/62/64

LEG LENGTH

Ins R32/L:34,
cm R81/L:86



002M WORKWEAR POLYCOTTON TWILL SHORTS

- » 2 back pockets with flaps
- » Cargo pocket on right leg
- » Small extra pocket below waistband
- » Expandable waistband for comfortable fit

WAIST SIZES

UK (inches): 28/30/32/34/36/38/40/42/
44/46/48
Europe: 44/46/48/50/52/54/56/58/60
/62/64



HEAVY DUTY WORKWEAR TROUSERS

015



Teflon® is a registered trademark of Du Pont used under license by INVISTA and its affiliates.

MATERIAL / WEIGHT

65% Polyester, 35% Cotton
Hardwearing Canvas
260g/m²

PACKING

Pack 1/ Carton 12

015M HEAVY DUTY WORKWEAR TROUSERS

- » Teflon® fabric protector
- » 2 back pockets, one open, one with flap and hook and loop fastener
- » Cargo pockets on both legs, with practical compartments on right leg
- » Small extra pocket below waistband
- » Triple stitched inner leg seams and pocket openings triple, reinforced seat area
- » Internal pockets for knee pads (21cm x 15cm max.)
- » YKK zipper



WAIST SIZES

UK (inches): 28/30/32/34/36/38/40/42/44/
46/48
Europe: 44/46/48/50/52/54/56/58/60/62/64

LEG LENGTH

Ins S:30/R32/L:34
cm S:76/R81/L:86



HEAVY DUTY WORKWEAR GILET

014



Teflon® is a registered trademark of Du Pont used under license by INVISTA and its affiliates.

MATERIAL / WEIGHT

65% Polyester, 35% Cotton Hardwearing Canvas with 5oz Polyester Wadding, 100% Polyester Inner Lining
260g/m²

PACKING

Pack 1/ Carton 12

014M HEAVY DUTY WORKWEAR GILET

SIZES XS-4XL

- » Teflon® fabric protector
- » Full zip with stormflap, flexi notch at neck
- » Drop Tail, elasticated gusset at armhole, reinforced hang tag
- » Right hand side chest pocket with functional multi compartments
- » Spacious, discreet zipped decoration access at left chest



013M

CUFF STYLES & COLLARS



ROUNDED EDGE CUFFS

Adjustable with 2 buttons.



KENT

Perfect for business, this classic collar is named after the Duke of Kent.



SQUARE EDGE CUFFS

Adjustable with 2 buttons.



NEW KENT

Not as wide-flared as the Cutaway or as sharp-cut as the Kent collar, this modern style is stiffened, boned and suitable for embroidery.



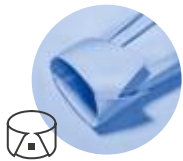
MITRED EDGE CUFFS

Adjustable with 2 buttons.



BUTTON DOWN

The modern sporty buttoned-down collar gives a smart appearance without a tie.



COCKTAIL CUFFS

These can be worn either turned or not turned, for a stylish look.



UNDER BUTTON DOWN

This type of collar is ideal for wearing without a tie and with an open collar button.



CUFF LINKS

Many shirts offer the option to wear cuff links.



LADIES

Our Ladies' Shirts feature a classic collar distinguished in style by its length and shape.

CARE SYMBOLS



30°C
machine wash
gentle cycle



30°C
machine
wash



40°C
machine wash
gentle cycle



40°C
machine
wash



50°C
machine wash
gentle cycle



50°C
machine
wash



60°C
machine
wash



No softeners



Do not
tumble dry



Tumble dry
at low
temperature



Do not iron



Iron at low
temperature



Iron at medium
temperature



Do not bleach



Do not
dry clean



Dry clean,
any solvent
except
trichloroethylene

FEATURES & FUNCTIONS



BREATHABLE

A material's breathability is measured in terms of how many grams of water vapour pass through a square meter of fabric over 24 hours (g/m²/24h). The higher the value, the more breathable the product.



WATERPROOF

The water column test indicates how many millimetres of water a fabric can withstand before the pressure causes it to leak. Measurements above 1,500 mm are considered waterproof.



EASY CARE

A special finish ensures that the shirts and blouses are easier and quicker to iron.



SPOT SHIELD™

Fabrics with a SpotShield™ finish are resistant to water and dirt. They even repel most oils without difficulty.



BIONIC-FINISH® ECO

The fluorine- and PFC-free finish prevents water and dirt from sticking to the material.



TEFLON® (DUPONT™)

Teflon® coatings ensure that fabrics are resistant to water, oil and dirt. What's more, this does not have any negative impact on the weight, look, colour or breathability.



LYCRA®

Lycra® is a brand name from the company Invista. It is an extremely stretchy elastane fibre with outstanding rebound properties. These textiles promise an improved fit and comfort to match.



LYCRA® T400®

This elastomultiester (LYCRA® T400®) is a modern double fibre material that can be stretched in all directions and then bounces back to its original shape. The high-quality material adapts to the movements of the wearer and always retains its shape.



AQUAPEL™ BY NANOTEX®

Developed in order to offer reliable protection against wind and water, Aquapel™ is still breathable and at the same time features environmentally friendly fluorine- and PFC-free technology.



DUPONT™ SORONA®

The sustainable insulation with renewable plant-based materials is made with reduced energy consumption and 50% less greenhouse gas emissions.



FLUOR- AND PFC-FREE

Fluorine- and PFC-free materials are more degradable, for the good of both us and the environment.



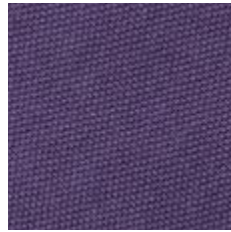
PR POWDER ROSE

PANTONE® FABRIC: 13-1504 TPX
PANTONE® PAPER: 5035 C
C:11 M:26 Y:19 K:0



57 FUCHSIA

PANTONE® FABRIC: 18-1856 TPX
PANTONE® PAPER: 1935 C
C:0 M:100 Y:7 K:0



81 PURPLE

PANTONE® FABRIC: 19-3737 TPX
PANTONE® PAPER: 7447 C
C:90 M:100 Y:30 K:15



PT PORT

PANTONE® FABRIC: 19-1726 TPX
PANTONE® PAPER: 7428 C
C:10 M:95 Y:43 K:73



41 BURGUNDY

PANTONE® FABRIC: 19-1716 TPX
PANTONE® PAPER: 5195 C
C:50 M:100 Y:70 K:45



CR CLASSIC RED

PANTONE® FABRIC: 19-1764 TPX
PANTONE® PAPER: 1945 C
C:0 M:100 Y:80 K:25



BR BRIGHT RED

PANTONE® FABRIC: 18-1662 TPX
PANTONE® PAPER: 1797 C
C:0 M:100 Y:100 K:0



44 ORANGE

PANTONE® FABRIC: 17-1464 TPX
PANTONE® PAPER: 1665 C
C:0 M:77 Y:100 K:0



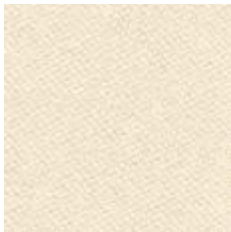
PD PURE GOLD

PANTONE® FABRIC: 14-1064 TPX
PANTONE® PAPER: 137 C
C:0 M:29 Y:92 K:0



K2 YELLOW

PANTONE® FABRIC: 13-0746 TPX
PANTONE® PAPER: 129 C
C:0 M:0 Y:80 K:0



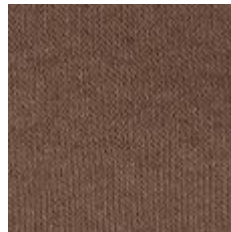
60 NATURAL

PANTONE® FABRIC: 11-0606-TCX
PANTONE® PAPER: 9224C
C:4 M:9 Y:25 K:0



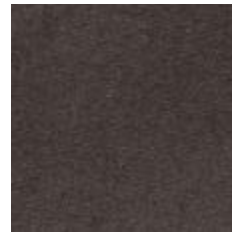
KT TAN

PANTONE® FABRIC: 15-1114 TCX
PANTONE® PAPER: 2312 C
C:29 M:38 Y:50 K:1



MJ MOCHA

PANTONE® FABRIC: 18-1017 TPX
PANTONE® PAPER: 4272 C
C:40 M:47 Y:59 K:37



C0 CHOCOLATE

PANTONE® FABRIC: 17-0812 TPX
PANTONE® PAPER: 439 C
C:0 M:11 Y:17 K:75



D0 DARK OLIVE

PANTONE® FABRIC: 19-0511 TCX
PANTONE® PAPER: 418 C
C:61 M:51 Y:64 K:32



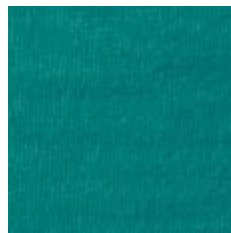
BP OLIVE

PANTONE® FABRIC: 19-0309 TPX
PANTONE® PAPER: 418 C
C:65 M:41 Y:60 K:48



38 BOTTLE GREEN

PANTONE® FABRIC: 19-5513 TPX
PANTONE® PAPER: 5477 C
C:100 M:50 Y:80 K:45



WL WINTER EMERALD

PANTONE® FABRIC: 17-5034 TPX
PANTONE® PAPER: 569 C
C:100 M:0 Y:50 K:10



A0 AQUA

PANTONE® FABRIC: 14-4809-TCX
PANTONE® PAPER: P 124-11C
C:38 M:0 Y:16 K:5



amfori 
Trade with purpose

Member of amfori, the leading global business
association for open and sustainable trade.
We participate in amfori BSCI. **For more
information visit www.amfori.org**

**BZ BRIGHT SKY**

PANTONE® FABRIC: 14-4112 TPX
 PANTONE® PAPER: 2708 C
 C:15 M:5 Y:0 K:0

**42 LIGHT BLUE**

PANTONE® FABRIC: 14-4110 TPX
 PANTONE® PAPER: 2708 C
 C:30 M:14 Y:0 K:0

**00 OXFORD BLUE**

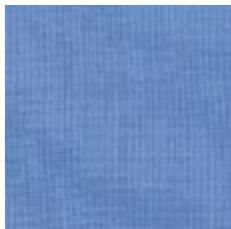
PANTONE® FABRIC: 14-4214 TPX
 PANTONE® PAPER: 644 C
 C:35 M:17 Y:0 K:0

**SC SKY**

PANTONE® FABRIC: 15-4020 TPX
 PANTONE® PAPER: 651 C
 C:48 M:22 Y:0 K:0

**MK MINERAL BLUE**

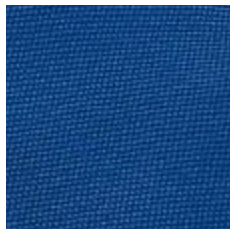
PANTONE® FABRIC: 17-4021 TPX
 PANTONE® PAPER: 535 C
 C:47 M:28 Y:11 K:4

**CP CORPORATE BLUE**

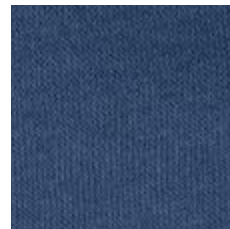
PANTONE® FABRIC: 16-4021 TPX
 PANTONE® PAPER: 652 C
 C:60 M:35 Y:0 K:5

**ZU AZURE BLUE**

PANTONE® FABRIC: 18-4141 TPX
 PANTONE® PAPER: 660 C
 C:100 M:53 Y:0 K:3

**BH BRIGHT ROYAL**

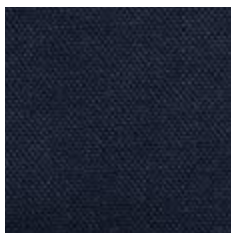
PANTONE® FABRIC: 18-3949 TPX
 PANTONE® PAPER: 2726 C
 C:100 M:70 Y:0 K:5

**IB INDIGO BLUE**

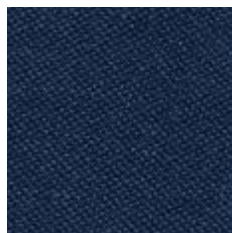
PANTONE® FABRIC: 19-4026 TPX
 PANTONE® PAPER: 2378 C
 C:86 M:56 Y:13 K:35

**PB PETROL BLUE**

PANTONE® FABRIC: 19-4324 TPX
 PANTONE® PAPER: 4160 C
 C:100 M:25 Y:0 K:62

**NB BRIGHT NAVY**

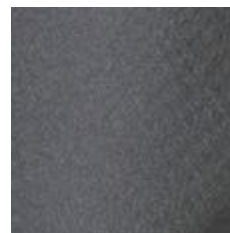
PANTONE® FABRIC: 19-3921 TPX
 PANTONE® PAPER: 2380 C
 C:91 M:71 Y:36 K:56

**FN FRENCH NAVY**

PANTONE® FABRIC: 19-4010 TPX
 PANTONE® PAPER: 532 C
 C:100 M:85 Y:35 K:55

**TT TITANIUM**

PANTONE® FABRIC: 19-3906 TPX
 PANTONE® PAPER: COOL GREY 11 C
 C:35 M:5 Y:0 K:85

**IR IRON GREY**

PANTONE® FABRIC: 18-4214 TPX
 PANTONE® PAPER: 431 C
 C:45 M:25 Y:16 K:59

**CM CHARCOAL MARL**

PANTONE® FABRIC: 19-4023 TPX
 PANTONE® PAPER: 432 C
 C:65 M:43 Y:26 K:78

**CG CONVOY GREY**

PANTONE® FABRIC: 17-4405 TPX
 PANTONE® PAPER: 444 C
 C:18 M:5 Y:0 K:71

**SI SILVER**

PANTONE® FABRIC: 17-0000 TPX
 PANTONE® PAPER: 877 C
 C:0 M:0 Y:0 K:60

**BK STONE**

PANTONE® FABRIC: 15-4101 TPX
 PANTONE® PAPER: 421 C
 C:13 M:8 Y:11 K:26

**UG URBAN GREY**

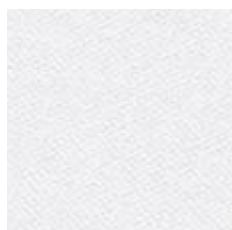
PANTONE® FABRIC: 13-4303 TPX
 PANTONE® PAPER: COOL GREY 2 C
 C:22 M:15 Y:16 K:0

**SH SPORT HEATHER**

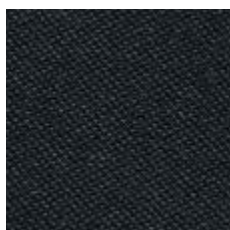
PANTONE® FABRIC: 18-4005 (MARLED)
 PANTONE® PAPER: 424 C
 C:2 M:2 Y:0 K:56

**LX LIGHT OXFORD**

PANTONE® FABRIC: 14-4002 (MARLED)
 PANTONE® PAPER: COOL GREY 3C
 C:5 M:0 Y:0 K:40

**30 WHITE**

PANTONE® FABRIC: 11-0601 TPX
 PANTONE® PAPER: 7541 C
 C:0 M:0 Y:0 K:0

**36 BLACK**

PANTONE® FABRIC: 19-4005 TPX
 PANTONE® PAPER: BLACK C
 C:100 M:50 Y:50 K:100

SIZE GUIDE

All of our measurements are based on actual "to fit" body sizes rather than the size of the garment itself.

For example, a polo shirt with a chest to fit size of 92-97cm / 36-38" will fit someone with this chest measurement; trousers with a waist to fit 50 Europe / 34", will fit a person with this measurement.

Here are some tips to help you choose the most appropriate garment size(s):

1

CHEST

Men: Measure around the fullest part of the chest, 2.5cm below the underarm.

Women: Measure around the fullest part of the bust.

2

COLLAR

Men: Measure around the base of the neck.

3

WAIST

All: Measure around the natural waist, keeping the measuring tape taut.

4

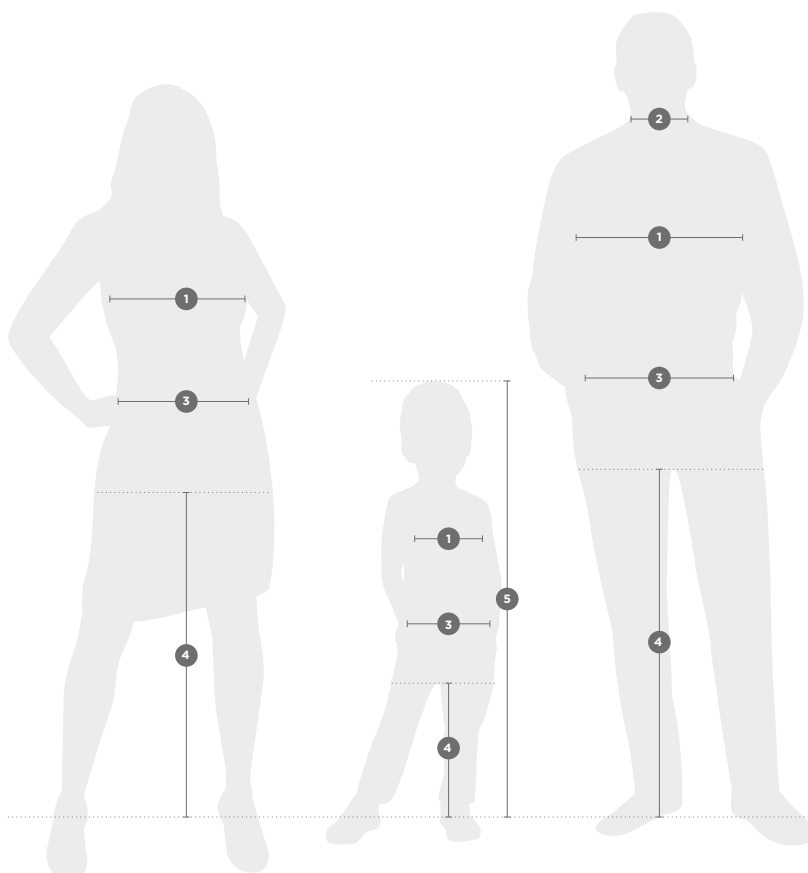
LEG LENGTH

All: Measure from the top of the inside leg at the crotch down to where the trousers are normally worn with shoes.

5

HEIGHT

Kids: Standing still with feet together and flat on the floor, measure from the top of the head to the ground.



ALL PRODUCTS (excluding shirts, trousers, shorts & sweat pants)

LADIES'	XXS	XS	S	M	L	XL	2XL	3XL	4XL	5XL	6XL
DRESS SIZE											
UK	6	8	10	12	14	16	18	20	22	24	26
FRANCE	34	36	38	40	42	44	46	48	50	52	54
ITALY	38	40	42	44	46	48	50	52	54	56	58
GERMANY/EUROPE	32	34	36	38	40	42	44	46	48	50	52
CHEST TO FIT (CM)	72-77	77-82	82-87	87-92	92-97	97-102	102-107	107-112	112-117	117-122	122-127
CHEST TO FIT (INS)	28-30	30-32	32-34	34-36	36-38	38-40	40-42	42-44	44-46	46-48	48-50

MEN'S	XXS	XS	S	M	L	XL	2XL	3XL	4XL	5XL	6XL
DRESS SIZE											
GERMANY/EUROPE	44	46	48	50	52	54-56	56-58	58-60	62-64	66-68	70-72
CHEST TO FIT (CM)	82-87	87-92	92-97	97-102	102-107	107-112	112-117	117-122	122-127	127-132	132-137
CHEST TO FIT (INS)	32-34	34-36	36-38	38-40	40-42	42-44	44-46	46-48	48-50	50-52	52-54

SHIRTS

LADIES'	XXS	XS	S	M	L	XL	2XL	3XL	4XL	5XL	6XL
DRESS SIZE											
UK	6	8	10	12	14	16	18	20	22	24	26
FRANCE	34	36	38	40	42	44	46	48	50	52	54
ITALY	38	40	42	44	46	48	50	52	54	56	58
GERMANY/EUROPE	32	34	36	38	40	42	44	46	48	50	52
CHEST TO FIT (CM)	72-77	77-82	82-87	87-92	92-97	97-104	104-112	112-120	120-130	130-137	137-144
CHEST TO FIT (INS)	28-30	30-32	32-34	34-36	36-38	38-41	41-44	44-47	47-51	51-54	54-57

MEN'S	S	M	L	XL	2XL	3XL	4XL	5XL	6XL
DRESS SIZE									
COLLAR TO FIT (CM)	37-38	39-40	41-42	43-44	45-46	47-48	49-50	51-52	53-54
DUAL COLLAR SIZES (INS)	14.5/15	15.5	16/16.5	17/17.5	18	18.5/19	19.5	20	21
INDIVIDUAL COLLAR SIZES (INS)	14.5 15	15.5	16 16.5	17 17.5	18	18.5 19	19.5	20	21
CHEST TO FIT (CM)	92-97	97-102	102-107	107-112	112-117	117-122	122-127	127-132	132-137
CHEST TO FIT (INS)	36-38	38-40	40-42	42-44	44-46	46-48	48-50	50-52	52-54

TROUSERS

UK (INS)	28	30	32	34	36	38	40	42	44	46	48
EUROPE	44	46	48	50	52	54	56	58	60	62	64

	SHORT	REGULAR	LONG
LEG LENGTH (CM)	76	81	86
LEG LENGTH (INS)	30	32	34

SWEAT PANTS

LADIES'	XS	S	M	L	XL
DRESS SIZE					
UK	8	10	12	14	16
WAIST TO FIT (CM)	63.5	68.5	74	79	84
WAIST TO FIT (INS)	25	27	29	31	33

MEN'S	XS	S	M	L	XL	2XL	3XL
DRESS SIZE							
WAIST TO FIT (CM)	71	76	81	86.5	91.5	96.5	101.5
WAIST TO FIT (INS)	28	30	32	34	36	38	40

ALL KIDS PRODUCTS (excluding sweat pants)

AGES (YEARS)	1-2	3-4	5-6	7-8	9-10	11-12	13-14	15-16
HEIGHT (CM)	90	104	116	128	140	152	164	176
CHEST TO FIT (CM)	51-56	56-63	63-71	71-76	76-81	81-86	86-91	91-96
CHEST TO FIT (INS)	20-22	22-25	25-28	28-30	30-32	32-34	34-36	36-38

SWEAT PANTS (kids)

AGES (YEARS)	3-4	5-6	7-8	9-10	11-12
HEIGHT (CM)	104	116	128	140	152
WAIST TO FIT (CM)	47	50	53	56	62
WAIST TO FIT (INS)	18.5	20	21	22	24.5

PRODUCT GUIDE

T-SHIRTS																																		
PRODUCT CODE	PAGE	PRODUCT NAME	SIZES	PACKS / CARTONS	30	36	38	41	44	57	60	81	80	BH	BK	BR	BZ	CG	CR	PB	BP	MK	IB	MJ	PR	DO	FN	K2	LX	PD	SC	KT	WL	ZU
PURE ORGANIC T	20	100% COMBED RINGSPUN COTTON (ORGANIC); LIGHT OXFORD 97% COTTON, 3% VISCOSE / 160 G/M ²																																
108M	20	MEN'S PURE ORGANIC T	XS-3XL	12/72																														
108F	20	LADIES' PURE ORGANIC T	XS-2XL	12/72																														
AUTHENTIC CLASSIC T	18	100% RINGSPUN COTTON; LIGHT OXFORD: 93% COTTON, 7% VISCOSE / WHITE: 175 G/M ² , COLOURS: 180 G/M ²																																
180M*	18	AUTHENTIC CLASSIC T	XS-4XL	12/72																														
180F	18	LADIES' AUTHENTIC CLASSIC T	XS-2XL	12/72																														
180B	18	KIDS AUTHENTIC CLASSIC T	1-12 YEARS	12/72																														
180L**	18	AUTHENTIC CLASSIC LONG SLEEVE T	XS-4XL	12/36,72																														
AUTHENTIC HEAVYWEIGHT T	19	100% COMBED RINGSPUN COTTON / WHITE: 210 G/M ² , COLOURS: 215 G/M ²																																
215M	19	AUTHENTIC HEAVYWEIGHT T	S-2XL	12/72																														

* 3XL & 4XL only available in White, Black, Bottle Green, Natural, Bright Royal, Convoy Grey, Classic Red, French Navy, Olive, Mineral Blue, Indigo Blue and Mocha

** 4XL is only available in boxes of 36.

POLOS																																
PRODUCT CODE	PAGE	PRODUCT NAME	SIZES	PACKS / CARTONS	30	36	38	41	44	57	60	81	A0	BH	BK	BR	CG	CR	PB	DO	FN	K2	LX	PD	SC	TT	WL	ZU				
					WHITE	BLACK	BOTTLE GREEN	BURGUNDY	ORANGE	FUCHSIA	NATURAL	PURPLE	AQUA	BRIGHT ROYAL	STONE	BRIGHT RED	CONVOY GREY	CLASSIC RED	PETROL BLUE	DARK OLIVE	FRENCH NAVY	YELLOW	LIGHT OXFORD	PURE GOLD	SKY	TITANIUM	WINTER EMERALD	AZURE BLUE				
STRETCH POLO	25	95% COMBED RINGSPUN COTTON, 5% LYCRA®; LIGHT OXFORD: 88% COMBED RINGSPUN COTTON, 7% VISCOSE, 5% LYCRA® / WHITE: 205 G/M ² , COLOURS: 210 G/M ²																														
566M	25	MEN'S FITTED STRETCH POLO	S-3XL	6/36																												
566F	25	LADIES' FITTED STRETCH POLO	XS-2XL	6/36																												
CLASSIC COTTON POLO	26	100% RINGSPUN COTTON / WHITE: 195 G/M ² , COLOURS: 200 G/M ²																														
569M*	26	MEN'S CLASSIC COTTON POLO	XS-4XL	6/36																												
AUTHENTIC ECO POLO	27	65% POLYESTER(RECYCLED), 35% RINGSPUN COTTON / WHITE: 170 G/M ² , COLOURS: 180 G/M ²																														
570M	27	AUTHENTIC ECO POLO	XS-3XL	6/36																												
ULTIMATE COTTON POLO	26	100% COMBED RINGSPUN COTTON / WHITE: 210 G/M ² , COLOURS: 215 G/M ²																														
577M	26	MEN'S ULTIMATE COTTON POLO	XS-4XL	6/36																												
CLASSIC POLYCOTTON POLO	24	65% POLYESTER, 35% RINGSPUN COTTON / WHITE: 210 G/M ² , COLOURS: 215 G/M ²																														
539M**	24	MEN'S CLASSIC POLYCOTTON POLO	XS-6XL	6/36																												
539F***	24	LADIES' CLASSIC POLYCOTTON POLO	XS-4XL	6/36																												
539B	24	KIDS CLASSIC POLYCOTTON POLO	1-12 YEARS	6/36																												
HARDWEARING POLYCOTTON POLO	24	65% POLYESTER, 35% RINGSPUN COTTON / WHITE: 210 G/M ² , COLOURS: 215 G/M ²																														
599M****	24	HARDWEARING POLYCOTTON POLO	XS-6XL	6/36																												

* XS only available in French Navy and White. 3XL & 4XL only available in Black, French Navy and White

** 3XL-4XL only available in Bottle Green, Black, Bright Royal, Classic Red, French Navy, Light Oxford and White. 5XL & 6XL only available in Black, Bright Royal, French Navy and White

*** 3XL & 4XL only available in Bottle Green, Bright Royal and Frencha Navy

**** 5XL & 6XL only available in Black, Bottle Green, Bright Royal, French Navy and White

SWEATSHIRTS & JOG PANTS

PRODUCT CODE	PAGE	PRODUCT NAME	SIZES	PACKS / CARTONS	30	36	38	41	44	57	60	81	A0	BH	BK	BR	BZ	CG	CR	BP	MK	UG	IB	MJ	SH	FN	K2	LX	SC	WL	ZU	
					WHITE	BLACK	BOTTLE GREEN	BURGUNDY	ORANGE	FUCHSIA	NATURAL	PURPLE	AQUA	BRIGHT ROYAL	STONE	BRIGHT RED	BRIGHT SKY	CONVOY GREY	CLASSIC RED	OLIVE	MINERAL BLUE	URBANGREY	INDIGO BLUE	MOCHA	SPORT HEATHER	FRENCH NAVY	YELLOW	LIGHT OXFORD	SKY	WINTER EMERALD	AZURE BLUE	
THE AUTHENTIC SWEAT	30	80% COMBED RINGSPUN COTTON, 20% POLYESTER; 100% COTTON FACE YARN (3-THREAD-CONSTRUCTION) / 280G/M ² / SPORT HEATHER: 70% COTTON, 20% POLYESTER, 10% VISCOSE																														
262M*	30	THE AUTHENTIC SWEAT	XS-5XL	6/36																												
AUTHENTIC HOODED SWEAT	30	80% COMBED RINGSPUN COTTON, 20% POLYESTER; 100% COTTON FACE YARN (3-THREAD-CONSTRUCTION) / 280 G/M ²																														
265M*	30	MEN'S AUTHENTIC HOODED SWEAT	XS-4XL	3/24																												
265F**	30	LADIES' AUTHENTIC HOODED SWEAT	XS-XL	3/24																												
265B	30	KIDS AUTHENTIC HOODED SWEAT	3-14 YEARS	3/24																												
AUTHENTIC ZIPPED HOOD JACKET	32	80% COMBED RINGSPUN COTTON, 20% POLYESTER; 100% COTTON FACE YARN (3-THREAD-CONSTRUCTION) / 280 G/M ²																														
266M*	32	MEN'S AUTHENTIC ZIPPED HOOD JACKET	XS-5XL	3/24																												
266F**	32	LADIES' AUTHENTIC ZIPPED HOOD JACKET	XS-2XL	3/24																												
266B	32	KIDS AUTHENTIC ZIPPED HOOD JACKET	3-14 YEARS	3/24																												
AUTHENTIC SWEAT JACKET	32	80% COMBED RINGSPUN COTTON, 20% POLYESTER; 100% COTTON FACE YARN (3-THREAD-CONSTRUCTION) / 280 G/M ²																														
267M***	32	MEN'S AUTHENTIC SWEAT JACKET	XS-4XL	3/24																												
267F	32	LADIES' AUTHENTIC SWEAT JACKET	XS-XL	3/24																												
AUTHENTIC QUARTER ZIP SWEAT	32	80% COMBED RINGSPUN COTTON, 20% POLYESTER; 100% COTTON FACE YARN (3-THREAD-CONSTRUCTION) / 280 G/M ²																														
270M	32	AUTHENTIC QUARTER ZIP SWEAT	XS-4XL	3/24																												
AUTHENTIC JOG PANTS	30	80% COMBED RINGSPUN COTTON, 20% POLYESTER; 100% COTTON FACE YARN (3-THREAD-CONSTRUCTION) / 280 G/M ²																														
268M	30	MEN'S AUTHENTIC JOG PANTS	S-2XL	3/24																												
CLASSIC SWEATSHIRT	34	50% COMBED RINGSPUN COTTON, 50% POLYESTER / 295 G/M ²																														
762M****	34	CLASSIC SWEATSHIRT	XS-4XL	6/36																												
762B	34	KIDS CLASSIC SWEATSHIRT	1-12 YEARS	6/36																												
HOODED SWEATSHIRT	35	50% COMBED RINGSPUN COTTON, 50% POLYESTER / 295 G/M ²																														
575M	35	HOODED SWEATSHIRT	XS-2XL	6/24																												
575B	35	KIDS HOODED SWEATSHIRT	3-12 YEARS	6/24																												
SWEAT PANTS	35	50% COMBED RINGSPUN COTTON, 50% POLYESTER / 295 G/M ²																														
750B	35	KIDS SWEAT PANTS	3-12 YEARS	6/36																												

* 4XL only available in Black, Convoy Grey, French Navy and Light Oxford. 5XL only available in Black and French Navy

** 2XL only available in Black, French Navy and Light Oxford

*** 4XL only available in Black, French Navy and Light Oxford

**** 3XL & 4XL only available in Bright Royal, Bottle Green and French Navy

RUSSELL COLLECTION – KNITWEAR

PRODUCT CODE	PAGE	PRODUCT NAME	SIZES	PACKS / CARTONS	BLACK 36	CHARCOAL MARL CM	FRENCH NAVY FN
V-NECK KNITTED PULLOVER	52	50% COTTON, 50% ACRYLIC COTTONBLEND / 275 G/M ²					
710M	52	MEN'S V-NECK KNITTED PULLOVER	XXS-4XL	1/12			
710F	52	LADIES' V-NECK KNITTED PULLOVER	XXS-4XL	1/12			
V-NECK KNITTED CARDIGAN	52	50% COTTON, 50% ACRYLIC COTTONBLEND / 275 G/M ²					
715F	52	LADIES' V-NECK KNITTED CARDIGAN	XXS-4XL	1/12			
V-NECK SLEEVELESS KNITTED PULLOVER	53	50% COTTON, 50% ACRYLIC COTTONBLEND / 275 G/M ²					
716M	53	V-NECK SLEEVELESS KNITTED PULLOVER	XXS-4XL	1/12			

RUSSELL COLLECTION – SHIRTS

PRODUCT CODE	PAGE	PRODUCT NAME	SIZES	PACKS / CARTONS	30	36	38	42	BH	BZ	CG	CR	CP	CQ	D2	FN	00	PT	SI	NB	W4	LB
					WHITE	BLACK	BOTTLE GREEN	LIGHT BLUE	BRIGHT ROYAL	BRIGHT SKY	CONVOY GREY	CLASSIC RED	CORPORATE BLUE	CHOCOLATE	DENIM MARL	FRENCH NAVY	OXFORD BLUE	PORT	SILVER	BRIGHT NAVY	WHITE / SILVER / CONVOY GREY	LIGHT BLUE / MID BLUE / BRIGHT NAVY
POLYCOTTON POPLIN SHIRT	39	65% POLYESTER, 35% COTTON POPLIN / WHITE: 110 G/M ² , COLOURS: 105 G/M ²																				
934M	39	MEN'S LONG SLEEVE CLASSIC POLYCOTTON POPLIN SHIRT	S-4XL	1/12																		
934F	39	LADIES' LONG SLEEVE CLASSIC POLYCOTTON POPLIN SHIRT	XS-4XL	1/12																		
935M	39	MEN'S SHORT SLEEVE CLASSIC POLYCOTTON POPLIN SHIRT	S-4XL	1/12																		
935F	39	LADIES' SHORT SLEEVE CLASSIC POLYCOTTON POPLIN SHIRT	XS-4XL	1/12																		
924M	40	MEN'S LONG SLEEVE TAILORED POLYCOTTON POPLIN SHIRT	S-4XL	1/12																		
924F	40	LADIES' LONG SLEEVE FITTED POLYCOTTON POPLIN SHIRT	XS-4XL	1/12																		
PURE COTTON POPLIN SHIRT	41	100% COTTON POPLIN / WHITE: 120 G/M ² , COLOURS: 125 G/M ²																				
936M	41	MEN'S LONG SLEEVE CLASSIC PURE COTTON POPLIN SHIRT	S-4XL	1/12																		
936F	41	LADIES' LONG SLEEVE CLASSIC PURE COTTON POPLIN SHIRT	XS-4XL	1/12																		
STRETCH SHIRT	40	97% COTTON, 3% ELASTANE POPLIN / 140 G/M ²																				
946M	40	MEN'S LONG SLEEVE FITTED STRETCH SHIRT	S-4XL	1/12																		
946F	40	LADIES' 3/4 SLEEVE FITTED STRETCH SHIRT	XS-2XL	1/12																		
947M	40	MEN'S SHORT SLEEVE FITTED STRETCH SHIRT	S-4XL	1/12																		
ULTIMATE STRETCH SHIRT	41	75% COTTON, 25% ELASTOMULTIESTER (LYCRA® T400® FIBRE) POPLIN / WHITE: 125 G/M ² , COLOURS: 130 G/M ²																				
960M	41	MEN'S LONG SLEEVE FITTED ULTIMATE STRETCH SHIRT	S-4XL	1/12																		
960F	41	LADIES' LONG SLEEVE FITTED ULTIMATE STRETCH SHIRT	XS-4XL	1/12																		

RUSSELL COLLECTION - SHIRTS

PRODUCT CODE	PAGE	PRODUCT NAME	SIZES	PACKS / CARTONS	30	36	38	42	BH	BZ	CG	CR	CP	CQ	D2	FN	OO	PT	SL	NB	W4	LB
					WHITE	BLACK	BOTTLE GREEN	LIGHT BLUE	BRIGHT ROYAL	BRIGHT SKY	CONVOY GREY	CLASSIC RED	CORPORATE BLUE	CHOCOLATE	DENIM MARL	FRENCH NAVY	OXFORD BLUE	PORT	SILVER	BRIGHT NAVY	WHITE / SILVER / CONVOY GREY	LIGHT BLUE / MID BLUE / BRIGHT NAVY
OXFORD SHIRT	43	70% COTTON, 30% POLYESTER OXFORD / WHITE: 130 G/M ² , COLOURS: 135 G/M ²																				
922M	43	MEN'S LONG SLEEVE TAILORED OXFORD SHIRT	S-4XL	1/12																		
923M	43	MEN'S SHORT SLEEVE TAILORED OXFORD SHIRT	S-4XL	1/12																		
932M	43	MEN'S LONG SLEEVE CLASSIC OXFORD SHIRT	S-6XL	1/12																		
932F	43	LADIES' LONG SLEEVE TAILORED OXFORD SHIRT	XS-6XL	1/12																		
933M	44	MEN'S SHORT SLEEVE CLASSIC OXFORD SHIRT	S-6XL	1/12																		
933F	44	LADIES' SHORT SLEEVE TAILORED OXFORD SHIRT	XS-6XL	1/12																		
ULTIMATE NON-IRON SHIRT	49	100% COTTON MICRO TWILL / 120 G/M ²																				
956M	49	MEN'S LONG SLEEVE CLASSIC ULTIMATE NON-IRON SHIRT	S-4XL	1/12																		
956F	49	LADIES' LONG SLEEVE TAILORED ULTIMATE NON-IRON SHIRT	XS-4XL	1/12																		
957M	49	MEN'S SHORT SLEEVE CLASSIC ULTIMATE NON-IRON SHIRT	S-4XL	1/12																		
957F	49	LADIES' SHORT SLEEVE TAILORED ULTIMATE NON-IRON SHIRT	XS-4XL	1/12																		
958M	49	MEN'S LONG SLEEVE TAILORED ULTIMATE NON-IRON SHIRT	S-4XL	1/12																		
CONTRAST HERRINGBONE SHIRT	47	84% COTTON, 16% POLYESTER HERRINGBONE / WHITE: 125 G/M ² , COLOURS: 130 G/M ²																				
964M	47	MEN'S LONG SLEEVE TAILORED CONTRAST HERRINGBONE SHIRT	S-4XL	1/12																		
HERRINGBONE SHIRT	47	84% COTTON, 16% POLYESTER HERRINGBONE / WHITE: 125 G/M ² , COLOURS: 130 G/M ²																				
962M	47	MEN'S LONG SLEEVE TAILORED HERRINGBONE SHIRT	S-4XL	1/12																		
962F	47	LADIES' LONG SLEEVE TAILORED HERRINGBONE SHIRT	XS-4XL	1/12																		
963M	47	MEN'S SHORT SLEEVE TAILORED HERRINGBONE SHIRT	S-4XL	1/12																		
963F	47	LADIES' SHORT SLEEVE TAILORED HERRINGBONE SHIRT	XS-4XL	1/12																		

FLEECE

PRODUCT CODE	PAGE	PRODUCT NAME	SIZES	PACKS / CARTONS	36	38	41	BH	CG	CR	FN
					BLACK	BOTTLE GREEN	BURGUNDY	BRIGHT ROYAL	CONVOY GREY	CLASSIC RED	FRENCH NAVY
FULL ZIP OUTDOOR FLEECE	55	100% POLYESTER ANTI-PILL FLEECE / 320 G/M ²									
870M	55	MEN'S FULL ZIP OUTDOOR FLEECE	XS-4XL	3/24							
870F	55	LADIES' FULL ZIP OUTDOOR FLEECE	XS-2XL	3/24							
870B	55	KIDS FULL ZIP OUTDOOR FLEECE	3-12 YEARS	3/24							
OUTDOOR FLEECE GILET	55	100% POLYESTER ANTI-PILL FLEECE / 320 G/M ²									
872M	55	MEN'S OUTDOOR FLEECE GILET	XS-2XL	3/24							
QUARTER ZIP OUTDOOR FLEECE	55	100% POLYESTER ANTI-PILL FLEECE / 320 G/M ²									
874M	55	QUARTER ZIP OUTDOOR FLEECE	XS-2XL	3/24							

JACKETS

PRODUCT CODE	PAGE	PRODUCT NAME	SIZES	PACKS / CARTONS	WHITE	BLACK	BOTTLE GREEN	BURGUNDY	BRIGHT ROYAL	STONE	CONVOY GREY	CLASSIC RED	DARK OLIVE	FRENCH NAVY	IRON GREY	TITANIUM	AZURE BLUE
					30	36	38	41	BH	BK	CG	CR	DO	FN	IR	TT	ZU
ESSENTIAL SOFTSHELL JACKET	65	94% POLYESTER (RECYCLED), 6% ELASTANE / 290 G/M²															
420M	65	ESSENTIAL SOFTSHELL JACKET	XS-3XL	1/12													
CROSS JACKET	58	100% POLYESTER / 125 G/M²															
430M	58	MEN'S CROSS JACKET	S-4XL	1/12													
HOODED NANO JACKET	59	100% POLYESTER / 66 G/M²															
440M	59	MEN'S HOODED NANO JACKET	S-4XL	1/12													
NANO BODYWARMER	59	100% POLYESTER / 66 G/M²															
441M	59	MEN'S NANO BODYWARMER	S-4XL	1/12													
441F	59	LADIES' NANO BODYWARMER	XS-3XL	1/12													
BIONIC SOFTSHELL JACKET	62	94% POLYESTER, 6% ELASTANE TREATED WITH BIONIC-FINISH® ECO (3 LAYER SOFTSHELL JACKET) / 320 G/M²															
410M	62	MEN'S BIONIC SOFTSHELL JACKET	XS-4XL	1/12													
410F	62	LADIES' BIONIC SOFTSHELL JACKET	XS-4XL	1/12													
SOFTSHELL JACKET	63	92% POLYESTER, 8% ELASTANE (3 LAYER SOFTSHELL FABRIC) / 340 G/M²															
140M*	63	MEN'S SOFTSHELL JACKET	XS-4XL	1/12													
140F*	63	LADIES' SOFTSHELL JACKET	XS-4XL	1/12													
SOFTSHELL GILET	63	92% POLYESTER, 8% ELASTANE (3 LAYER SOFTSHELL FABRIC) / 340 G/M²															
141M	63	MEN'S SOFTSHELL GILET	XS-2XL	1/12													
SMART SOFTSHELL JACKET	66	100% POLYESTER KNITTED SOFTSHELL OUTER LAYER, BONDED MICROFLEECE INNER LAYER / 315 G/M²															
040M	66	MEN'S SMART SOFTSHELL JACKET	XS-3XL	1/12													
040F	66	LADIES' SMART SOFTSHELL JACKET	XS-3XL	1/12													
SMART SOFTSHELL GILET	66	100% POLYESTER KNITTED SOFTSHELL OUTER LAYER, BONDED MICROFLEECE INNER LAYER / 315 G/M²															
041M	66	MEN'S SMART SOFTSHELL GILET	XS-3XL	1/12													
SPORTSHELL 5000 JACKET	66	100% POLYESTER OUTER, 100% POLYESTER MESH, ADVANCED SOFTSHELL FABRIC WITH NATURAL STRETCH (3 LAYER BONDED HYDROPHOBIC SUBSTRATE) / 250 G/M²															
520M	66	MEN'S SPORTSHELL 5000 JACKET	XS-2XL	1/12													
HYDRAPLUS 2000 JACKET	67	100% NYLON TASLAN 190 G/M²															
510M**	67	MEN'S HYDRAPLUS 2000 JACKET	XS-4XL	1/12													

* 3XL & 4XL only available in Black, Classic Red, French Navy, Titanium, Bottle Green

** 3XL & 4XL only available in Black, Classic Red, French Navy and Titanium

WORKWEAR

PRODUCT CODE	PAGE	PRODUCT NAME	SIZES	PACKS /CARTONS	WHITE	BLACK	BOTTLE GREEN	ORANGE	BRIGHT ROYAL	CONVOY GREY	CLASSIC RED	FRENCH NAVY	LIGHT OXFORD
					30	36	38	44	BH	CG	CR	FN	LX
HEAVY DUTY WORKWEAR T	69	100% COMBED RINGSPUN COTTON; LIGHT OXFORD: 93% COTTON, 7% VISCOSE / 180 G/M ²											
010M	69	HEAVY DUTY WORKWEAR T	XS-4XL	3/36									
HEAVY DUTY COLLAR AND CREW NECK WORKWEAR SWEATSHIRT	69	80% COMBED RINGSPUN COTTON, 20% POLYESTER / 300 G/M ²											
012M	69	HEAVY DUTY WORKWEAR COLLAR SWEATSHIRT	XS-4XL	3/24									
013M	69	HEAVY DUTY WORKWEAR SWEATSHIRT	XS-4XL	3/24									
HEAVY DUTY WORKWEAR GILET	71	65% POLYESTER, 35% COTTON HARDWEARING CANVAS WITH 50Z POLYESTER WADDING, 100% POLYESTER INNER LINING / 260 G/M ²											
014M	71	HEAVY DUTY WORKWEAR GILET	XS-4XL	1/12									
WORKWEAR POLYCOTTON TWILL TROUSERS & SHORTS	70	65% POLYESTER, 35% COTTON TWILL / 245 G/M ²											
001M	70	WORKWEAR POLYCOTTON TWILL TROUSERS	SEE SIZE GUIDE IN CATALOGUE OR ON OUR WEBSITE	1/12									
002M	70	WORKWEAR POLYCOTTON TWILL SHORTS	SEE SIZE GUIDE IN CATALOGUE OR ON OUR WEBSITE	1/12									
HEAVY DUTY WORKWEAR TROUSERS	70	65% POLYESTER, 35% HARDWEARING CANVAS / 260 G/M ²											
015M	70	HEAVY DUTY WORKWEAR TROUSERS	SEE SIZE GUIDE IN CATALOGUE OR ON OUR WEBSITE	1/12									



©2025 RUSSELL BRANDS, LLC

