

Chiswick Horticultural
& Allotments Society
Handbook 2023

Capture, print, & frame your memories.

With Snappysnaps Chiswick, Snappy Studio
and Chiswick Custom Framing.

With 10% off to all members of the
Chiswick Horticultural Society
on mentioning this advert when placing
orders via our website at
www.snappysnaps.co.uk/chiswick

Chiswick High Road, W4 1PP
0208 994 0854



WHITMAN & CO.

5-7 Turnham Green Terrace
Chiswick, London W4 1RG

whitmanandco.com

020 8747 8800

Chiswick Horticultural & Allotments Society

Registered as the Chiswick Horticultural and Allotments Society

Charity number: 1110134

Company Number: 5453200

Affiliated to: The Royal Horticultural Society

The London Gardens Society

The Federation of Middlesex Horticultural & Allotments Societies

Supported by the London Borough of Hounslow

Table of contents

Table of contents	3-4
Chairman's Welcome & the CHAS	5-6
Officers of the Society	7
2023 Dates for your diary	8
Sowing guide	10-12
Allotment art by Francis Bowyer	13
Yosef's art pupils warm the Hut, snow chills plots	14
CHAS volunteers	15
A wonderland from a wilderness	16-17
Information for exhibitors	18-19
Going for gold: tips for exhibitors	20-21
Summer Show classes	22-25
Allotment competitions	26
Insects - the good, the bad and the ugly	27
Summer Show 2022 exhibits	28-29
Summer Show winners	30
Visitors to the shows	31

Autumn Show classes 2023	32-35
Autumn Show 2022 exhibits	36
Autumn Show 2022 winners	37
About the Trading Hut and price list	38-39
What we sell and what it's used for	40-41
Allotment art by Anna McCallion	42
Moon phase calendar	43
Acknowledgements	44

Chairman's Welcome & the CHAS

Hello and welcome to our 600 members. We provided a safe shopping / advice environment for many during the tail end of the pandemic and attracted many local residents to our Society.

Our management of the environment, biodiversity, community involvement etc., led to the Society winning a Green Flag Award for a second year at our site at Staveley/ Burial Ground Sites. We have also joined forces with Wild Chiswick to restore our wildlife allotment on Staveley Road.

Our biggest challenge last year was the weather. The extreme heat caused many crops to fail, and several plot holders had disappointing harvests.

Last year also saw the highest increase in plot fees for many years, and some tenants reluctantly surrendered their plots. The waiting lists for plots is still very high and the waiting lists are still currently closed for many sites. Plot inspections were carried out for the first time in over two years and there has been a decline in cultivation of some plots from the heady days of the pandemic when you had a job to find a weed on any site.

The traffic restrictions on Staveley Road caused us many problems with all our events having to be moved from Saturdays to Sundays.

The Chiswick Horticultural and Allotment Society (CHAS) was formed in 1915 and registered as a charity on 21 June 2005. Not all our members have allotments or gardens, but we all share a love of community and growing plants.

In addition to looking after six allotment sites, with over 600 individual plots, we also run several school and community projects throughout Chiswick, helping others and beautifying our neighbourhood.

The society provides many benefits to its members including:

- Low-cost gardening essentials at our Trading Centre a place for members to share gardening tips and ask for advice.
- Our summer and autumn shows provide a friendly competition and a fun day out for all the family.

- We organise events such as trips, tours, quiz and bonfire nights and hold summer and Christmas parties.
- We run a sharing scheme to connect people on the waiting list with those wanting help on their allotments.
- We have representatives at our sites who are happy to help members and introduce them to other allotment holders.
- CHAS works with the Council on behalf of our members.

The Society has charitable status and our objectives are the promotion and furtherance of the art, science and practice of horticulture. We've adopted some key principles that are beneficial to our members and the community in which we live:

- ✓ A conviction that people should care for nature and the environment;
- ✓ A desire to share knowledge and horticultural skills;
- ✓ A commitment to make gardening more accessible;
- ✓ A belief that gardening is therapeutic and can help develop a friendly community and improve the quality of life.

www.growchiswick.org

Our website has:

- information about the society and its activities
- events calendar
- gardening information and links to useful websites
- a blog covering society news to recipes and wildlife
- useful features such as a weather forecast, search function and a link showing the location of the Trading Centre

Please contact editor@growchiswick.org if you'd like to contribute, or to make suggestions and report errors.

Facebook: search Chiswick Horticultural and Allotments Society.

Twitter: a great way to promote our activities to the local community. Please follow us at [@growchiswick](https://twitter.com/growchiswick).

I wish you all a happy and heathy gardening year ahead!

Dennis Flaherty
Chairman

Officers of the Society

President: Paul Lynch

Vice President: John Todd

Patron: The Earl of Burlington

Vice President: Jill Morris

Trustees & Committee members

Chairman	Dennis Flaherty	chair@growchiswick.org
Secretary	Kouros Khakpour	secretary@growchiswick.org
Treasurer	David Burton	accounts@growchiswick.org
Trading	Alastair Britten	trading@growchiswick.org
Allotments	Christina Meiklejohn	allotmentsrep@growchiswick.org
Membership	Tessa Watkins	membership@growchiswick.org
Shows & Handbook	Michael Flinders	show@growchiswick.org
Schools	Jennifer Jenks	schools@growchiswick.org
PR	Charlotte Kimpton	charlotte@growchiswick.org
Events	Katja Schneekloth	katja@growchiswick.org
Outreach	John Gill	johng@growchiswick.org
Committee	Henry Gewanter, Henry Jones, Tirnothy Faulkner	

Co-opted members

Trading	Mark Cripps	tradingadmin@growchiswick.org
Webmaster	Yosef Ouri	editor@growchiswick.org
Committee support	Diana Bremner	

Allotment representatives

Burial Ground	Lilian Baker	bakerlilian@aol.com
Chertsey Road	Volunteer needed, contact secretary@growchiswick.org	
Dukes Meadows	Katja Schneekloth	katja@growchiswick.org
The Promenade	Christina Meiklejohn	allotmentsrep@growchiswick.org
Staveley Road	Volunteer needed, contact secretary@growchiswick.org	
Thames Road	Volunteer needed, contact secretary@growchiswick.org	

2023 Dates for your diary

Sunday, 2 April	AGM at the Trading Hut, 3pm
A Friday in May	Plant Sale, 17.30 – 19.30
A Saturday in May	Plant Sale, 11.00 – 14.00
Sunday, 25 June	CHAS Summer Show
Sunday, 10 September	CHAS Autumn Show
Dates to be announced:	We will be organising quizzes, trips parties, and a talk by Jim Buttress in 2023. Any other suggestions welcome.



Carpet and Hard Floor Specialists

Tel: 020 8742 1336

18 Fauconberg Road, Chiswick, London W4 3JY

NB Newsagents



Newsagent, Tobacconist
& Confectioner

3 Grove Park Road
London W4 3RS

Tel: 020 8994 4776



CHISWICK
Camera Centre

all your
photography
needs...



We buy used equipment - Best prices paid.

Call us on
020 8995 9114

Or email us at
sales@chiswickcameras.co.uk

Or visit us online at
www.chiswickcameras.co.uk

4 Chiswick Terrace, Acton Lane
London W4 5LY

DC WASTE

Rubbish Clearance

- House * Garage * Garden * Office clearances
- * Builders waste collection
- * Wait & Load service
- * Metal Collection / Cars cleared

Fully Licensed and Insured
For a fast, reliable service call:

07563 758 254

Sowing guide

January

In trays or pots

- Round seeded (as opposed to wrinkle seeded) peas can be sown from late January onwards.
- Onions in modules - germinate them somewhere with a little heat (a windowsill is fine) then put them in a cold frame or unheated greenhouse to grow on.

In a polytunnel or greenhouse

- From the end of the month, you can think about sowing hardy salads and oriental greens; mizuna, mibuna, pak choi

February

In trays or pots

- Round seeded (as opposed to wrinkle seeded) peas
- Winter salads & oriental greens to plant outside in March, but still under a cloche or mini-tunnel
- Onions in modules - germinate them somewhere with a little heat (a windowsill is fine) then put them in a cold frame or unheated greenhouse to grow on.

In trays or pots somewhere warm, germinator/warm airing cupboard

- Tomatoes, peppers and aubergines

In a polytunnel or greenhouse

- Winter salads, oriental greens, carrots

March/April

Outside

- Root crops; beetroot, turnips, carrots & parsnips
- Mangetout & podding peas & broad beans
- Summer salads including lettuces, endive, cress, rocket, radishes
- Brassica crops for eating from summer through to the winter – kale, cabbage, sprouts, broccoli, chard, calabrese and cauliflowers
- Leeks

- Radishes and spring onions
- Potatoes

In trays or pots somewhere warm, germinator/warm airing cupboard

- Tomatoes, peppers and aubergines, ideally by the end of March.
- Celery/celeriac (again need heat to germinate)

- Courgettes, squashes, cucumbers and melons

In a polytunnel or greenhouse direct into the border

- Summer salads
- French beans for an early crop
- Herbs including basil, coriander & parsley

May

Outside

- French, runner and broad beans, mangetout & podding peas.
- Root crops - carrots, beetroot, leeks, radishes, turnips etc.
- Herbs including parsley, coriander, fennel and others
- Swiss chard & leaf beet
- All the brassicas can still be sown this month for overwintering - kale, summer and winter cabbages, Brussels sprouts, purple sprouting broccoli, calabrese and cauliflowers
- Summer salads
- Sweetcorn
- French, runner and broad beans, all types of peas
- Sweetcorn

In trays or pots somewhere warm germinator/warm airing cupboard

- Courgettes, squashes, cucumbers and melons

In a polytunnel or greenhouse border

- Summer salads
- Basil & coriander
- Plant out summer crops (tomatoes, peppers etc.) started indoors

June

Outside

- French and runner beans

- Root crops including carrots, beetroot, turnips, swedes
- Herbs including parsley, coriander and others
- Swiss chard & leaf beet
- Summer salads
- Fennel

Sweetcorn

In trays or pots somewhere warm (germinator/airing cupboard)

- Courgettes, squashes, cucumbers and melons

In a polytunnel or greenhouse border

- Basil & coriander
- Plant out summer crops started indoors

July/August

- Dwarf French beans (up to early July) in warmer areas only
- Last sowings of root crops including carrots, beetroot, turnips
- Winter radishes and swedes
- Swiss chard & leaf beet
- Oriental greens, mizuna, mibuna, komatsuna, mustard greens
- Lettuce, rocket, cress and salad radishes
- Fennel
- Spring cabbage (from late July)
- Bunching and spring onions

September/October

- Spring cabbage (early September, warmer areas only)
- Winter salads and greens
- Bunching onions
- Broad beans and hardy (round seeded) peas to overwinter

In a polytunnel or greenhouse border

- Hardy oriental greens, particularly mustard greens, komatsuna, mizuna, tsoi sim and Chinese cabbage.

November/December

- Plant garlic, choosing the biggest cloves to get the best results

Allotment art by CHAS member Francis Bowyer



Yosef's art pupils warm the Hut, snow chills plots



CHAS volunteers



A wonderland from a wilderness

By Julia Langdom

When Alice gets into the beautiful garden we come to know as Wonderland, she has to undergo all sorts of discomforts: there's the rabbit hole, the trouble with the key and then all that business about the "Drink Me" shrinking potion. All you have to do at 40A Hazledene Road is ring the bell.

It is one of the forgotten secrets of terraced housing that if the road has a bend in it, someone somewhere is probably going to have an odd-shaped house and a surprise on the back of it. That is certainly the case at 40A, although the leafy, well-tended tiny corner entrance is itself a clue to what is coming. There is an astonishing quarter of an acre of gorgeous garden and not only is it a glorious space, but it's good enough to open to the public.

That's because there is a gardener living here. Vivien Cantor, a familiar face at the Trading Hut on Sundays, has created a wonderland from a wilderness. It has taken decades but it now ranks as one of the "exceptional" private gardens included among the more than 3,500 which belong to the National Garden Scheme (NGS) and occasionally open to the public to raise funds for charity.

Vivien first moved into Hazledene Road in 1970. For eight years she lived at number 40 and knew about the magical possibilities of the garden next door; when the opportunity arose, she jumped at it. In those days she was a young mother with a baby and a toddler and, of course, no time - but after a couple of years, the idea and then the garden began to take shape.

It was an odd story with an eccentric at the centre. Through a friend of a friend, she came to know an architect named Mike Leonard, a founding influence behind the Pink Floyd rock band, who had once been a tutor to some of the would-be musicians, had become their landlord and gave the nascent group their first name of "Leonard's

Lodgers". It was Leonard who set about designing Vivien's garden, creating three distinct areas: a lawn with woodland, an area with exotic plants and a shaded area with ferns and a bog garden. In the middle, a pillared stone gazebo gives a graceful focus and perspective to the whole.

Vivien brought her own design skill as a professional interior designer into developing the exterior as well. When I come to call, it is the bleak midwinter and one can only dream of the glories that spring and summer will bring, but Vivien and Adam (who does a spot of the heavy lifting for her in the garden these days; he has younger knees) are already planning and planting. There is much talk of mulching. More tulips are going in, some dahlias are being moved, the forget-me-not is being divided.

It is 20 years now since Vivien joined her garden up for the NGS. Last year from a single afternoon opening, she raised £1,200 for the Macmillan and Marie Curie charities while the NGS itself brought in a staggering £3.11 million for those and their other related charities. And it is nearly a century since Miss Elsie Wagg suggested, back in 1926, that the British national enthusiasm for gardening could be harnessed to raise money for health and nursing charities. The Scheme was born and the following year 609 gardens were opened, here and there, up and down the country.

The Scheme's achievements and those of its gardeners' too are no less impressive today. Vivien Cantor has always loved gardening. She started taking cuttings when she was six years old because she knew that was what gardeners do. She thinks she may have something in the genes – there was a great grandfather in Cornwall who was known as a great gardener as well – but who knows?

No genetic testing is needed, though, to know the truth. The evidence is all around her. And It's a Wonderland.

Information for exhibitors

Parking

Exhibitors may park their cars by the Chas Trading Hut while unloading exhibits but should then move them off site as quickly as possible to allow access for other exhibitors.

Setting up/Staging

Exhibitors should pay for their entries and pick up their show cards from the organizer's table inside the Nissen Hut. Depending on the weather, setting up/staging will be done in or outside this Hut. There will be tables, water vases in three different sizes and paper plates available until 11.45. Stewards will be on hand to offer advice and guidance on staging.

Exhibits should be placed with the card (name side down) on the appropriate section on the exhibition tables, which will be numbered and marked with dividers, in the Trading Hut or outside exhibition area. If you know it, please write the variety on both sides of the card, so judges and show visitors know what you have entered.

Judging

You will have to leave the show area at the time indicated to allow the judges to do their job. No exhibitors are allowed in the Trading Hut or Exhibiting Area while judging is taking place. The Show will reopen at 14.00 after judging.

Prize giving

Prizes will be presented at 15:45, and only 10 minutes before then may exhibits be removed. Any exhibitors who want to keep their flowers or produce must remove them by 15:45 otherwise they will be put into the auction of produce. Any money raised from the auction will be put into the Society's Funds.

RHS Allotment competition & alternative allotment competition

Do not forget to advise your allotment site representative if you wish to be considered for the RHS Allotment Competition. Each site representative will nominate the best plots on their site for entry to this competition.

BUSBY'S

Dispensing Chemist
(Susan Birch MRPharmS)



Family Healthcare Cosmetics

(Clarins - Claudalie - Dr. Hauschka - Elizabeth Arden)

9 Grove Park Road, Chiswick, London W4 3RS

Tel: 020 8994 6087

ESTD **W4** 1975
BATHROOMS



W4 Bathroom's professional team have over 40 years' experience in the bathroom industry covering bespoke design, exclusive custom units and a range of premier brands. Our focus is customer after sales service and we pride ourselves in providing exceptional high quality products in terms of both design and technology from the "Market Leaders" in the manufacture of Bathroom Products.

2 Devonshire Road, London W4 2HD

www.w4bathrooms.com

Tel: 020 8994 1609

Going for gold: tips for exhibitors (it's fun and easy)

Have a look at the different categories (fruit, flowers, vegetables, domestic, photography, children's) and you will be surprised at just how many you and your family can enter.

All entries must be produced by you from seed, bulb etc. (you must not enter other people's plants!). However you can enter a plant that you have bought and grown for at least 6 weeks before the date of the Show.

A copy of the RHS Shows Handbook is available in the CHAS Trading Hut if you need to consult it about any of the rules. Also check out the tips for success on the website (growchiswick.org/shows-3/tips-for-success).

Flowers

Choose blooms that look fresh and are just opening, so they will look good for the whole day of the show, and are not damaged, for instance no brown spots or broken tips. Remember to include some foliage from the same plant. Pick them late in the evening of the previous day and keep them in water in a cool place overnight. Check the size of flowers where this is specified as you must get the number of blooms or sprays exactly right, as specified on the list of classes, otherwise your entry will be disqualified. When selecting blooms, aim for uniformity and refinement, rather than just size. Great care should be taken in arranging the flowers, because in close competition a little extra neatness in presentation and what is termed 'staging' may decide the award.

Fruit and vegetables

Check whether your exhibit should have roots, foliage or stalks left on (e.g. Summer Show Class 46: *Rhubarb, 3 sticks with 5cm of leaf*). If nothing is indicated, there are no restrictions. Aim for uniform size, colour and shape where you are asked to exhibit more than one item. Clean vegetables by gently sponging off soil from root vegetables, but don't clean the bloom off plums and other fruit as this may lose you

points. Your produce should be displayed on a plate that is **no larger than 18cm in diameter**.

French and Runner beans should be long and straight and should be staged with stalks.

Carrots and **parsnips** should be shown with the tops removed about 5cm above the crown, but for **beetroot** at least 5cms of the top and leaves are left on.

Onions and **shallots** should have their outermost skin removed a week or two before the Show, to develop a good ripening colour. For **Classes 43 Summer** and **37 Autumn onion** foliage should be cut off, leaving about 5cm to be turned over and tied, but for Autumn **Class 38** plants should be staged with foliage and roots attached and well washed.

Cabbages, **cauliflowers** and **lettuce** should be shown with roots attached but washed. **Lettuce**, **spinach** and **chard** should be lifted as late as possible as they wilt quickly but roots may be wrapped in damp tissue within a clear plastic bag

Dates & details

Summer Show, Sunday 25 June

Autumn Show, Sunday 10 September

The Trading Hut Staveley Rd. W4 2SJ

Classes for all ages, open to members/non members
Entry fees 25p per exhibit, children free.

Staging 9.30am-11.45am Judging 12.00pm -2.00pm.

Summer Show classes, Sunday 25 June 2023

Roses

- 1 A bowl of roses: bowl not to exceed 30cm. in diameter
- 2 Rose, pink, 1 bloom
- 3 Rose, red, 1 bloom
- 4 Rose, yellow, 1 bloom
- 5 Rose, chosen for fragrance 1 bloom
- 6 Rose, any colour not in above classes, 1 bloom
- 7 Rose, 3 blooms of a single variety
- 8 Rose, 3 blooms of different varieties
- 9 A vase of shrub roses
- 10 Novice (those who have never won a rose prize here) 3 blooms

Sweet Peas

- 11 Sweet Peas, 1 vase, 5 spikes, single variety
- 12 Sweet Peas, 1 vase, 5 spikes, mixed
- 13 Novice (never won a sweet pea prize here) 3 blooms

General

- 14 1 bloom or spike, excluding roses and delphiniums
- 15 Garden flowers arranged for all round effect in a bowl not to exceed 30cm. in diameter
- 16 Delphiniums, 3 spikes or stems, 1 or more varieties
- 17 A vase of mixed flowers, excluding roses
- 18 A vase of "weeds" and/or wildflowers
- 19 A vase of pinks
- 20 A bowl of pansies 6 blooms
- 21 A vase of flowering trees or shrubs (not roses) 5 stems
- 22 An arrangement in an unusual container using flowers with or without accessories not exceeding 30cm x 30cm

Plants in pots or containers diameter 20 cm or less

- 23 1 plant in bloom, grown in a pot
- 24 1 cactus or succulent grown in a pot or container
- 25 1 pelargonium or geranium grown in a pot or container

Displays

- 26** Noah's Ark collection: a matching pair of flowers, a matching pair of fruits and a matching pair of vegetables (total 6)
- 27** A display of 4 pelargonium or geranium leaves
- 28** A display of flowers, fruit and vegetables n/e 45x 45cm
- 29** 2 dishes of fruit and/or vegetables, 2 distinct varieties

Fruit

- 30** Strawberries, 1 dish of 7 with stalks
- 31** Gooseberries, 1 dish of 7 with stalks
- 32** Raspberries, 1 dish of 7 with stalks
- 33** Blackcurrants, 1 dish of 5 strigs
- 34** Currants red or white 1 dish of 5 strigs
- 35** Any other fruit not listed above, 9 or less

Vegetables

- 36** Lettuces, 2 with washed roots
- 37** Peas (excluding mange tout), 5 pods
- 38** Mangetout, 5 pods
- 39** Radishes, 5 with trimmed tops
- 40** Broad beans, 5 with stalks
- 41** Asparagus, 4 spears
- 42** Onions, green salad, 6
- 43** Onions, 4 under 250g, tops dressed, roots trimmed
- 44** 3 stems of 3 different named herbs in separate vases
- 45** Cabbage, 1 with at least 7.5cm. of stalk
- 46** Rhubarb, 3 sticks with at least 5 cm. of leaf
- 47** Any other vegetable not listed, max 3
- 48** Beetroot, 3
- 49** Potatoes, 4 of same variety

Domestic

- 50** 1 jar of marmalade named and dated
- 51** 1 jar of chutney named and dated
- 52** 1 jar of fruit curd named and dated
- 53** 1 jar of Baba Ghanoush
- 54** 1 loaf of brown or white bread

- 55 7 Cheese straws
- 56 A Victoria sponge

Photography / Poetry

- 57 A photograph themed, "Well worth the wait"
- 58 A photograph themed, "An outdoor space that's special to me"
- 59 A photograph themed, "Weathered wood"
- 60 A poem themed, "I love to go there"

Children's (7 and under, and 8–12-year-olds)

- 61 A coloured picture of a flower, maximum A4
- 62 A decorated wooden spoon
- 63 A scarecrow made from natural or recycled materials
- 64 A moss or miniature garden on a tray or plate, not more than 45cm in diameter
- 65 Design and build a Bug Box

Cups to be awarded at the 2023 Summer Show and winners in 2022

The Rose Bowl for the highest total points in the Rose classes.

Won by Ruth Caleb

The Shailer Cup for the best Rose in show.

Won by Lizzie Drake

The Chatsworth Vase for the highest total points in the Sweet Peas classes. Won by Lizzie Drake

The Chiswick Products Cup for the best exhibit in the Fruit classes. Won by Lizzie Drake

The Jubilee Cup for the highest total points in the Flower classes.

Won by Ruth Caleb

The Orchard Cup for the highest total points in the Fruit classes.
won by Lizzie Drake

The Forth Trophy for the best exhibit in the Vegetable classes.
won by Julian Deghy

The Hazeldene Candlesticks for the highest total points in the
Vegetable classes. won by Guy Cleaver

The Society Cup for the highest total points in classes 1-49
won by Lizzie Drake

The Thornett Cup for the highest total points in the Domestic
classes. Won by Susanna Everton

The Snappy Snaps £50 Voucher for best photo in Show
Won by John Gill

The Hawkins Cup for the greatest number of exhibits over all
classes Won by Julian Deghy

The Sutton Court Cup for the school entering the most exhibits
Won by Grove Park School

The Silvie Cid Sheather Cup for the best exhibit in the children's
classes 7-Pyear-olds and under

The Lourdes Cid Sheather Cup for the best exhibit in the
children's classes 8–12-year-olds. Won by Rudy (Grove Park Sch)

Wheelers £50 Voucher for best exhibit in classes 14-22
Won by Lizzie Drake

The Berger Certificate + £50 cash
Won by the children of Belmont School

Allotment competitions

In late July, our allotment representatives select the most promising allotments on their sites for entry into our two allotment competitions.

The RHS Allotment Competition judges plots according to the following criteria:

Condition of the plot	60 points
Good workmanship	50 points
Quality of crops, flowers, fruit, vegetables and plants	150 points
Originality of layout and planning	25 points
Ingenuity in overcoming local problems	25 points
Visual aspect of the plot	20 points
Condition of garden sheds	20 points

The winner will be awarded The Quest Cup at the Autumn Show.

The Alternative Allotment Competition judges plots according to the following criteria:

Use of recycled materials (sheds etc.)	50 points
Diversity of plants	50 points
Organic cultivation	60 points
Water conservation	50 points
Composting	50 points
Encouragement of wildlife	50 points
Originality	60 points

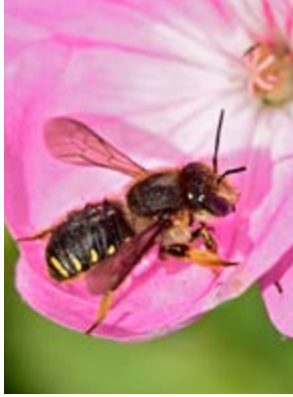
The winner will be awarded The Debbie Sutherland Award, at the Autumn Show.

The Alternative Allotment Competition with some of its criteria being opaque to the casual observer needs your help to alert non-members and encourage them to enter. The award is a beautiful handcrafted, glass relief, donated by Debbie's friends.

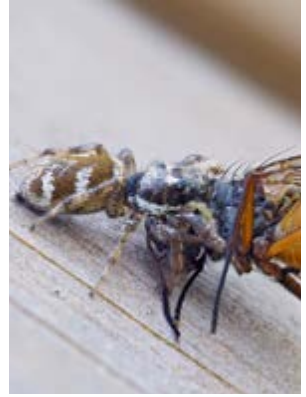
Insects, the good and the bad



Orange Tip



Wool Carder Bee



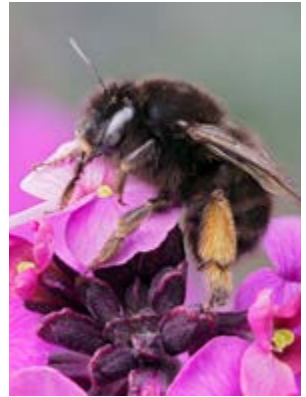
Zebra Spider with fly



Red Mason Bees



Crab Spider



Hairy Footed
Flower Bee



Vine Weevil



Box Moth



Lily Beetle

Summer Show 2022 exhibits





Summer 2022 winners



Ingrid & Paul bring joy to Ruth & g'son, Lizzie, John, Guy, Julian & Susanna. Centre, the lovely local actor Ingrid with the Certificate + £50 awarded to Belmont School in fond memory of Kurt Berger

Visitors to the shows



Autumn Show classes, Sunday 10 Sep, 2023

Flowers

- 1 Hanging basket

Zinnias

- 2 Zinnias, 3 blooms, 1 variety
- 3 Zinnias, 5 blooms mixed varieties

Dahlias

- 4 Dahlias, 1 vase or bowl, bowl diameter 30cm or less
- 5 Dahlias, 1 bloom, any colour or variety
- 6 Dahlias, 1 vase, 3 Cactus or Semi Cactus blooms
- 7 Dahlias, 1 vase, 3 pompon blooms 5.2cm or less
- 8 Dahlias, 1 vase, 3 pompon blooms 8.3cm or less
- 9 Novice, (never won a dahlia prize here) 1 vase, 3 blooms

Roses

- 10 Roses, 1 vase, 3 stems, any large, flowered variety
- 11 Rose, 1 vase, 1 stem, large flowered (not cluster)
- 12 Rose, 1 vase, 1 spray, Cluster Flowered

Other Flowers

- 13 1 spike gladioli
- 14 Vase of mixed flowers, to be viewed all round 5-10 stems
- 15 Vase of foliage (with or without berries)
- 16 Vase of marigolds, for overall effect

Plants growing pots or containers diameter 20cm or less

- 17 Any flowering plant, excl. those in the following classes
- 18 A Cactus or Succulent
- 19 A Geranium or Pelargonium in bloom
- 20 1 flowering Fuchsia

Fruit

- 21 A harvest festival offering of fruit and vegetables in a container not exceeding 45x45 cm
- 22 Apples, cooking, 3
- 23 Apples, dessert, 3
- 24 Pears, dessert, 3
- 25 Blackberries, 7 with stalks
- 26 Plums, 6 with stalks

- 27** A bunch of grapes, any variety
- 28** Raspberries, 7 with stalks
- 29** Any other fruit (max. 6 of same variety)

Vegetables

- 30** Potatoes, white, 4, 1 variety
- 31** Potatoes, other than white 4, 1 variety
- 32** Potatoes, salad, 4, 1 variety
- 33** Carrots, 3 long or stump variety with stalks
- 34** Runner beans, 6 pods with stalks
- 35** French beans, 6 pods with stalks
- 36** Shallots, 6
- 37** Onions, 4, tops dressed, roots trimmed
- 38** Onions, 4, with washed roots and tops intact
- 39** Tomatoes, 5 Red, 1 variety, with calyces
- 40** Tomatoes, 1 truss, some ripe, any variety
- 41** Tomatoes, 5 Yellow, 1 variety, with calyces
- 42** Cucumbers, 2 with stalks (with or without flowers)
- 43** Cabbage, 1, with at least 5cm of stalk
- 44** Brassica, 1, with at least 7.5 cm of stalk (excluding Cabbage)
- 45** Leeks, 3, with washed roots
- 46** Sweet peppers, 2
- 47** Chilli peppers, 4
- 48** Marrow, 2, with stalks
- 49** Lettuces, 2, 1 variety, with washed roots,(wet wrapping ok)
- 50** Pumpkin, 1
- 51** Squash, 1
- 52** Garlic, 4 whole bulbs
- 53** Courgettes, 2, minimum 15cm long, with or without flowers
- 54** Courgettes, 2, round variety
- 55** Sweetcorn, 2
- 56** Beetroot, 3, with at least 5cm of top and leaves
- 57** A vase of 3 stems of 1 culinary herb
- 58** 3 stems of different named herbs in separate vases
- 59** Any other vegetable, not listed above (maximum 3)
- 60** Heaviest Tomato
- 61** 3 matching pairs, flowers, fruit and vegetables, 6 in total

Domestic

- 62** A loaf of white or wholemeal bread
- 63** A jar of chutney or pickles named and dated
- 64** A jar of homemade jam, named and dated
- 65** A jar of honey from your own hive, named and dated
- 66** A bottle of still lemonade
- 67** 6 Bath Olivers
- 68** A Bakewell Tart, maximum size 25cm

Art and Photography

- 69** Art inspired by British wildlife and or Fruit & Veg, Painting, Photograph, Poetry, Craft, or any other medium, not exceeding 45cm x 45cm
- 70** A photo on the theme “Abandoned in the wrong place”
- 71** A photo on the theme “Living in style”

Children’s competition (7 and under, and 8–12-year-olds)

- 72** A Bumble bee using old clothes
- 73** A miniature beach on a seed tray or plate not more than 45cm in diameter
- 74** A flower that you have grown from seed
- 75** An A4 size drawing of British wildlife
- 76** A bunch of flowers in a jar
- 77** A painted pebble

2023 Autumn Show Cups and 2022 winners

The Wavendon Cup for highest total points in the dahlia classes
winner Judy Parsley

The Novice Cup for dahlias Liz Thornton

The Johnson Cup for highest total points in the Flower classes
winner Judy Parsley

The Staveley Cup for 2nd highest total points in the flower classes
winner Judy Katherine Braddick

The LGS Certificate and Medal for best exhibit in floral classes
winner Judy Parsley

The Mrs Johnson Bowl for best exhibit in fruit classes 21-29,
winner Judy Parsley

The Breerton-Hill Cup for the highest total points in fruit classes
21-29, winner Liz Thornton

The Henniker Cup for the highest total points in classes 29-69,
winner Roger Cook

The Chiswick Allotment Association Cup for the best exhibit in
classes 21 & 30-59 winner Stavros Michael

The Jock Lindsay Cup for the second highest total points in the
horticultural classes winner Stavros Michael

The RHS Banksian Medal for the highest total points in all the
horticultural classes, open to all except winners in 2 previous years
winner Roger Cook

The Tomlinson Cup for the best exhibit in the domestic classes
60-67 winner Jill Spencer

The Carol Weale Memorial Cup for the highest total points in the
domestic classes winner Susanna Everton

The Snappy Snaps £50 Voucher for best photo in Show
winner Judy Parsley

The Whitehouse Cup for highest total points in the autumn
children's classes winner Arlo Palmer-Jones

The Wheelers £50 Voucher for highest total points classes 17-20
Winners Susanna Everton and Stephen Hirst

Autumn Show 2022 exhibits



Autumn Show 2022 winners



Mayor Raghwinder presents prizes to exhibitors Stavros, Matthew, Arlo, Roger Judy, Jo and Susanna.

About the Trading Centre

Situated in Staveley Road, the CHAS Trading Centre is open every Sunday from 10am-12.30pm - except for the first Sunday of the month.

In 2023, we will be trading from 15th January until late July. After a Summer break, we reopen from the middle of September and will be trading until mid December.

In addition to the items listed on the subsequent page, (compost etc), we endeavour to stock a range of the most popular gardening essentials (eg tools; pest control items; gloves; bird boxes and feed etc) and always welcome suggestions from members. Never knowingly undersold, because we can negotiate volume deals, our prices are usually below those of the local garden centres and DIY stores.

Seasonally, a selection of seed potatoes arrives in January; asparagus crowns in April and spring bulbs in September. We sell onions; shallots; broad beans and peas by the scoop or by weight and garlic by the head. This allows you to pick and mix and to buy as many or as few as you want.

In January, the Greenhouse Team start sowing seeds so that there will be a selection of young vegetable plants available to buy later in the year including aubergines; beans; brassicas; cucumbers; tomatoes; leeks; peppers and squash. Not forgetting an array of garden and border plants!

In addition, we display a huge range of vegetable seeds for sale at exceptionally competitive prices.

We are dependent on our lovely volunteers – and could always do with more help -- if you're interested in getting involved, or have any suggestions, please email us at: tradingadmin@growchiswick.org

Why not pop in to say “Hi”? It's a place to meet friends (old and new) and to ask for advice.

Trading Centre price list as at 1st Jan 2023

Prices are indicative only and subject to change

Country Natural	80 litres	£5.00
Country Natural – multibuy offer	4 bags	£18.00
Multi-purpose Compost	20 litres 40 litres	£2.50 £5.00
Horse manure	45 litres	£5.00
Ericaceous Compost	60 litres	£7.50
6X Extra rich fertiliser	60 litres	£8.00
John Innes No 3	25 litres	£6.50
Chicken Pellets	per lb per 15kg bag	75p £15.00
Garotta	Per 3.5 kg packet	£6.00
Blood fish bone	per lb per 10 kg tub	75p £14.00
Bone Meal	per lb per 10kg tub	75p £14.00
Growmore	per lb per 10kg tub	75p £14.00
Garden lime	per lb	65p
Sulphate of Ammonia	per lb	75p
Sulphate of Potash	per lb	85p
Coarse Grit	per lb per 20kg bag	60p £7.00
Black Ground Cover 1m wide	per metre	£1.75
Black Netting 4m wide	per metre	£1.75
Enviromesh 2m wide	per metre	£4.00
Fleece	per metre	£1.50
Canes 30p-60p	Stakes £5.50	

CHAS Trading Hut

What we sell & what it's used for

Bone meal - Slow release Organic fertiliser suitable for general use at a rate of 2oz/sq.yd.

Chicken pellets – A slow release non-chemical fertiliser and a useful source of nitrogen, it also contains smaller amounts of other important nutrients.

Country natural - Improves soil structure to help drainage and to retain moisture without water logging, a natural source of organic matter.

Ericaceous compost – Compost suitable for growing acid-loving plants such as heather.

Blood, fish and bone – organic fertiliser for general use. Apply at a rate of 2oz/sq.yd.

Garden lime – Apply during October and February. On normal soils an application of 4oz/sq.yd. every three years will normally be enough to maintain a pH reading of 6.00 – 6.5. DO NOT USE near plants which require ericaceous conditions.

Garotta – Takes garden and kitchen waste and turns it into rich, natural compost.

Growmore – Well balanced chemical fertiliser suitable for all-round general use. Apply at 2oz/sq. yd. and always water in during dry weather.

Horticultural grit - helps conserve moisture, improve drainage and opens up heavy clay soils. As it has been washed, it is free from lime and other elements. This gives it a neutral pH that will not affect soil acidity levels.

Horse manure - Will fertilise and improve your soil. Put it on your beds/borders anytime of the year.

John Innes No 2 - Ideal for pricking out, potting rooted cuttings and other young plants and repotting house plants.

John Innes N0 3 - Ideal for final potting and planting up of established and mature plants.

Liquid seaweed – A balanced natural fertilizer contains major plant nutrients and a wide range of micronutrients.

Multi-purpose compost - contains all the nutrients essential for vigorous growth and strong root development and is ready to use straight from the bag. Once called ‘universal’ compost, these mixes cater for a host of uses – including sowing large seeds, pricking out seedlings and planting-up pots, containers and hanging baskets. Don’t use it to sow small seeds though: choose a seed compost.

Seed and potting compost - A good seed compost will coax flower and vegetable seeds into life; helping young seedlings to develop strong roots and healthy growth. Most seed composts do work well for rooting cuttings, too.

Sulphate of ammonia – A rapid-acting source of nitrogen when used at a rate of 1oz/sq.yd. Scatter on the surface and lightly fork in, especially when natural growth is active.

Sulphate of potash – Particularly valuable for better quality flower and fruits. Use at a rate of 1oz/sq.yd. when preparing the ground for planting.

Superphosphate –A readily available source of phosphate to assist strong root growth and encourage healthy, early maturity. Use at a rate of 3oz/sq.yd.

Top soil - Improves depleted soils, adds nutrients.

Allotment art by Anna McCallion



Moon Calendar 2023

New Moon	First quarter	Full Moon	Third quarter
		Jan 6 - Fri 11:09 pm	Jan 15 - Sun 02:13 am
Jan 21 - Sat 08:55 pm	Jan 28 - Sat 03:20 pm	Feb 5 - Sun 06:30 pm	Feb 13 - Mon 04:03 pm
Feb 20-Mon 07:09 am	Feb 27 - Mon 08:06 am	Mar 7 - Tue 12:42 pm	Mar 15 - Wed 02:10 am
Mar 21 - Tue 05:26 pm	Mar 29 - Wed 03:33 am	Apr 6 - Thu 05:37 am	Apr 13 - Thu 10:12 am
Apr 20 - Thu 05:15 am	Apr 27 - Thu 10:21 pm	May 5 - Fri 06:36 pm	May 12 - Fri 03:29 pm
May 19 - Fri 04:55 pm	May 27 - Sat 04:23 pm	Jun 4 - Sun 04:43 am	Jun 10 - Sat 08:32 pm
Jun 18-Sun 05:39 am	Jun 26 - Mon 08:51 am	Jul 3 - Mon 12:40 pm	Jul 10 - Mon 02:49 am
Jul 17 - Mon 07:33 pm	Jul 25 - Tue 11:08 pm	Aug 1 - Tue 07:33 pm	Aug 8 - Tue 11:29 am
Aug 16-Wed 10:38 am	Aug 24 - Thu 10:58 am	Aug-31 Thu 02:37 am	Sep 6 - Wed 11:22 pm
Sep 15 - Fri 02:40 am	Sep 22 - Fri 08:32 pm	Sep 29 - Fri 10:58 am	Oct 6 - Fri 02:49 pm
Oct 14 - Sat 06:55 pm	Oct 22 - Sun 04:30 am	Oct 28 - Sat 09:24 pm	Nov 5 - Sun 08:38 am
Nov 13-Mon 09:27 am	Nov 20 - Mon 10:50 am	Nov 27-Mon 09:16 am	Dec 5 - Tue 05:51 am

Acknowledgements

With thanks to:

Our advertisers, Busby's Chemist, The Carpet Gallery, The Chiswick Camera Centre, DC Waste, NB Newsagents, Snappy Snaps, W4 Bathrooms, Wheelers Flowers & Garden Centre and Whitman & Co. for their generosity

Anna McCallion for her art

Francis Bowyer for his art

Erda Estreme for cover photo

Andy Sands of Chiswick Camera Centre for good and bad insects photos

The children of Grove Park School for the back cover

Julia Langdon for A wonderland to wilderness and Vivienne Cantor for being Vivienne

Sam Flinders for a lot of help

Kourosh for technical assistance

Charlotte for producing the cover, finding Chris the printer and Chris for directing us to Dave and Paul at West Three Colour Solutions.

Our chairman for his trust

All our members for their inspiration

Anna McCallion and Francis Bowyer are working artists and welcome commissions.

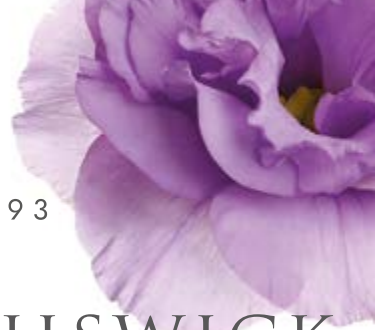
To contact Anna email adalrymple007@gmail.com

To contact Francis go to www.francisbowyer.com

EST.



1993



WHEELERS OF CHISWICK

FLOWERS & PLANTS *for* YOUR HOME & GARDEN

Established in 1993 by Spencer and Jason Wheeler, Wheelers of Chiswick offer the finest floral arrangements in traditional and contemporary designs.

Their Garden Centre (beside Turnham Green Tube) also offers a wonderful selection of plants, shrubs, containers, furniture and unique ornaments.

Show your CHAS membership card for a 10% discount!

Perhaps your garden needs a tidy up or overhaul? With their teams of first class gardeners they've got that covered too!

Call **0208 747 9505** today for a free quote.

Wheeler's of Chiswick, Turnham Green Terrace W4 1LR

www.wheelersflowers.com





1st

2nd

3rd



Ariana