



**DECHEM**

CATALOGUE  
2024









DECHEM Showroom



# DECHEM STUDIO

We are Michaela and Jakub, designers and storytellers in Bohemian glass. Our work is based on contemporary design combined with a mastery of production and a healthy respect for old Central European craft and traditions.

We design, produce and sell our collections of lights and decorative glass products. We produce unique light fixtures made from a combination of mouth-blown glass and handcrafted brass. Our glamorous chandeliers light up space with a playful yet elegant appearance.

A significant component of our work is blowing glass into a colour gradient. The wide range of fresh gradient colours is a distinctive feature of the Bandaska vase from our collection. It draws inspiration from traditional milk containers, well-known in Czech village households, and their elegant lines are now coming into modern homes in the form of our glass vases and lights.

In addition to our normal production, we love to devise bespoke luminous objects for interiors. They arise from experimenting with unconventional materials and unusual combinations.

Along with our own work, we like to be part of special collaborations and exhibitions. We have collaborated with renowned galleries and institutions, and curated and exhibited projects in Milan, London, Frankfurt, Istanbul and a several other cities around the world.

All of our creations are manufactured with care in Czech workshops using unique methods, including hand-blowing, snapping, cutting, grinding, firing, engraving and glass painting.

We founded DECHEM studio in Prague in 2012 as partners in both work and life after years of studying glass craft and design, and we have grown it into a renowned and a ward-winning design studio.





DECHEM Showroom









CONTEMPORARY COLLECTIONS  
CUSTOM MADE DESIGN  
LOCAL PRODUCTION





# KONO LIGHT

This collection of suspended light fixtures combines the elementary geometric shapes of a hand-blown glass ball and a brass cone inside, creating an almost metaphysical composition. Glass shades are available in crystal clear, alabaster white, smoke grey and neutral nude. The lamp is suspended on a brushed brass fixture with textile covered cable.







# TROPOS TABLE LAMP

The glass table lamp resembles glass architecture with its minimalist shapes and proportions. The light reveals a colour gradient in the glass and completely changes the atmosphere of the surroundings.

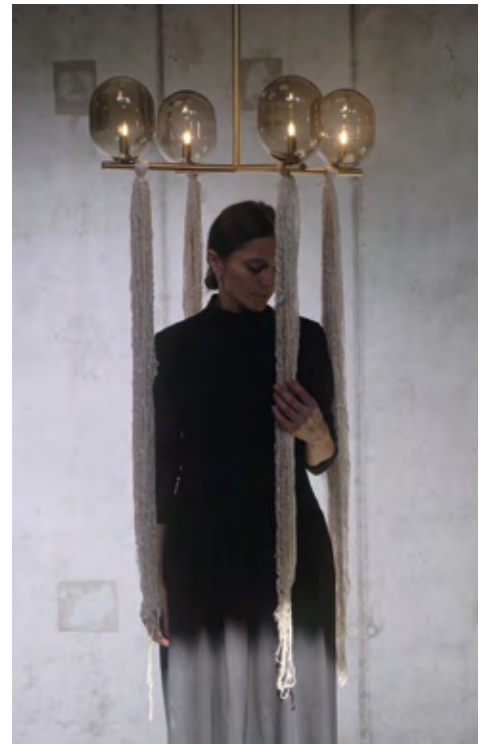






# TÉSERA CHANDE- LIER

Téséra chandelier is a sensuous take on a traditional lighting object: Oval glass shades balance on a thin brass construction and tassels reminiscent of queen Berenice's locks hang from the elegant luminaire. The glass capsules are hand-blown with a colour gradient and emphasize the lightness in the luminaires' appearance.

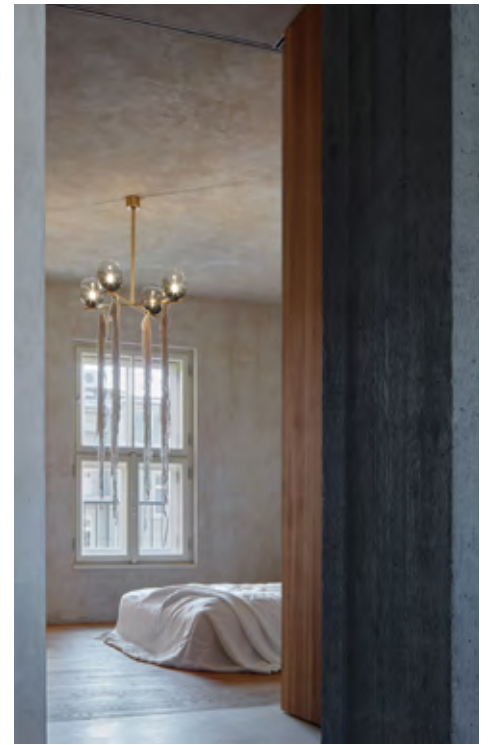






## RESIDENT. LIGHTING XVI.

To fit the extraordinary interior design concept by Tereza Porybná and Objektor Architekti, DECHEM studio designed various lightings and interior elements. Two chandeliers from rich materials, such as brushed brass, hand blown glass capsules with a colour gradient and tassels from raw mint fibres create the centre piece for the minimalist bedrooms. The long horizontal kitchen light from weathered raw steel, on the other hand, blends in naturally with the interior's concrete surfaces.



*SIZE CHANDELIER*  
w 71 cm × d 71 cm × h 150 cm

*SIZE HORIZONTAL LIGHT*  
Ø 6 cm × l 280 cm × h 120 cm





# FRAG- MENT WALL

To introduce daylight into a small bathroom, the client was looking for a semitransparent glass wall with an artistic flair - the perfect brief for DECHEM's new material Fragmentglass. The overlapping opaque glass fragments create a pattern which is translucent and at the same time blurring what lies behind. Light shining through the glass creates another stunning colour effect.



SIZE  
w 70 cm x d 3 cm x h 260 cm





# SPHAERAE LIGHT

Only one homogenous piece of hand-blown glass creates the main body of Sphaerae light fixture whose medium-sized sphere is connected with the cylinder in its upper part. While the sphere is largely illuminated, the cylinder is not, creating a beautiful contrast of forms and various colour qualities. The model, available in various bright colours, also features a delicate detail of three brass balls on the fixture itself. Sphaerae Light comes in two sizes.

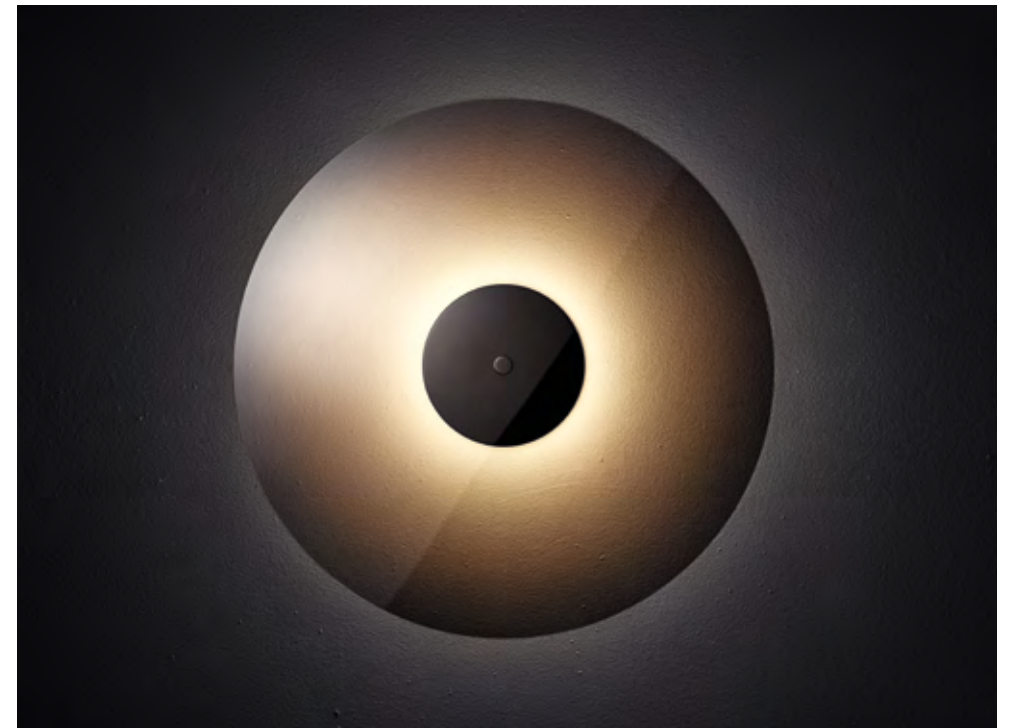
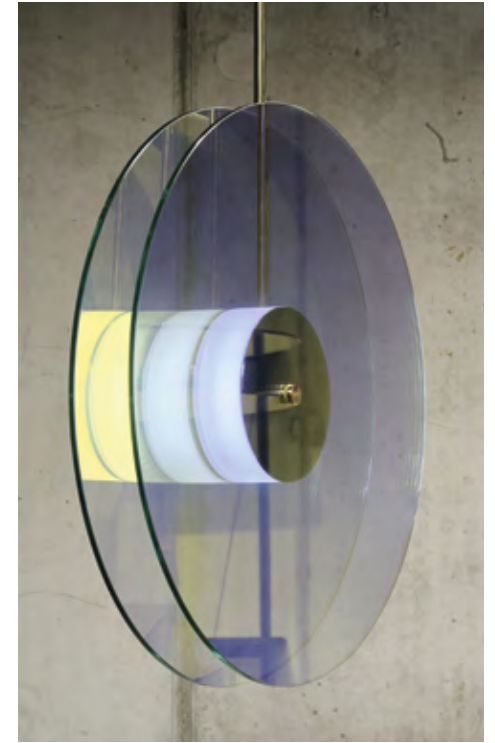






# ECLIPSE LIGHT

Inspired by the 1930s modernist design and Art Deco, Eclipse lamp is comprised of two metallised glass discs with a source of soft light behind the shiny brass details in between them. The flat, levitating piece when viewed from certain angles resembles two eclipsing celestial bodies, creating immersive visual effect of never-ending space. The functionalist clarity of the form meets poetic sensibility in this work.







# TREE LIGHT OBJECT

The site-specific wall object is a material collage which pays tribute to its surrounding nature. Designed for a private residence in the Czech countryside, the piece is composed of an illuminated brass ring, a fused glass square with a lively texture, an organically shaped element from red soil and a wood branch. The latter two are sourced from the building's surrounding garden and give the object its truly unique appearance.



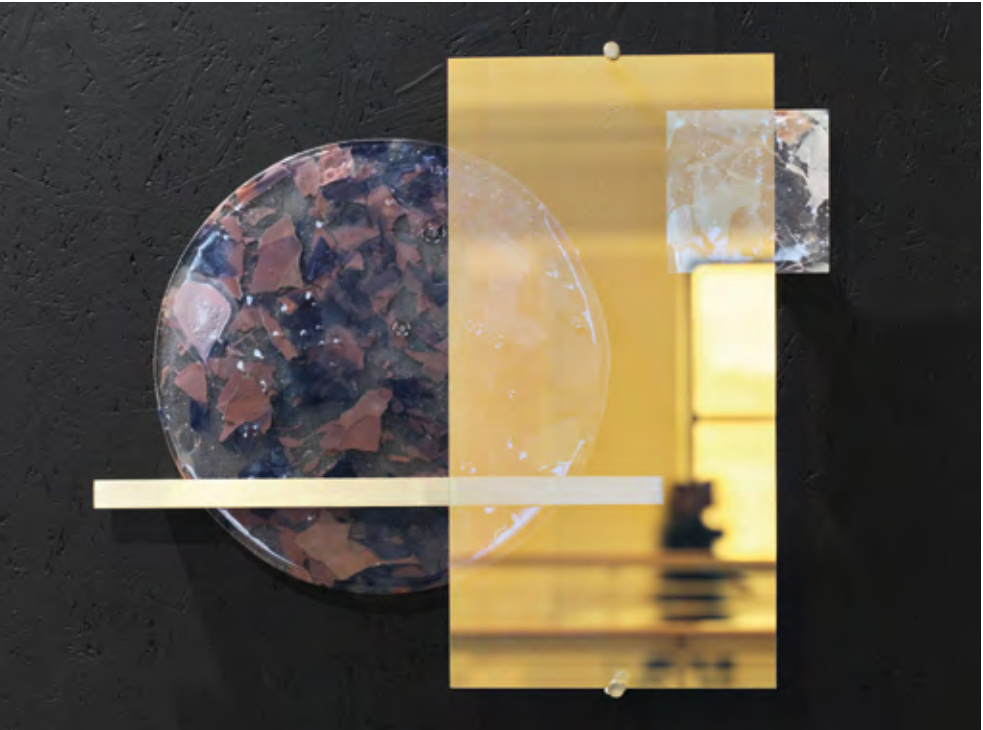
*SIZE*  
w 100 cm × d 15 cm × h 115 cm





# CLASH OF BEAUTY

The Clash of Beauty series includes two purely artistic wall objects playing with the composition of shapes and Fragmentglass textures set on an elegant mount in brushed brass. This formation of rectangular and circular sheets creates an enchanting effect of intertwining colours and metallic reflections of dichroic glass.







# MAGION LIGHT

Named after the series of successful Czechoslovak science satellites that orbited the Earth in the 1960s as part of the Interkosmos program, this lighting fixture features a large flat cylinder of blown glass in three different colours, including orange, green and smoke grey. The massive piece of tinted opal glass is attached to a minimalist three pronged metal structure inside the glass, resembling a small space station.







# RESIDENT. LIGHTING XI.

For the kitchen and dining area in a minimalist residential building, DECHEM studio combined the elementary geometric shapes of circle, triangle and square to create a collection of light fixtures. Kono in a set of three and a special all-white edition lights up the round dining table. In contrast, the angular kitchen island is completed by a long, illuminated cuboid from brushed brass.



*SIZE HORIZONTAL LIGHT*  
5 cm × l 260 cm × h 160 cm

*SIZE KONO LIGHT BIG*  
Ø 35 cm × h 66 cm

*SIZE KONO LIGHT MEDIUM*  
Ø 19 cm × h 52 cm





# STRATOS LIGHT

Different rounded shapes of a capsule and small and big spheres contrast with anodized alloy fixtures of this lamp, creating a surprising architectural element of the design, available in various colours including crystal clear, smoke grey, alabaster white, pink, green and orange.







# RESIDENT. LIGHTING X.

The spacious interior was initially inspired by the functionalist style of the residential building it is located in. Following the philosophy of the space and the brilliant interior design proposal by Lenka Míková Architekti, DECHEM studio was commissioned to create a collection of light fixtures for its entrance hall, kitchen, dining, and living room area. The light fixtures combine the elementary geometric shapes of a hand-blown glass ball and brass fixtures.



<i>SIZE WALL SCONCE</i> Ø 32 cm × d 93 cm	<i>SIZE SUSPENDED LIGHT</i> Ø 30 cm × h 160 cm
<i>SIZE HORIZONTAL LIGHT</i> Ø 5 cm × l 200 cm × h 100 cm	<i>SIZE CEILING LIGHT</i> Ø 20 cm × h 27 cm

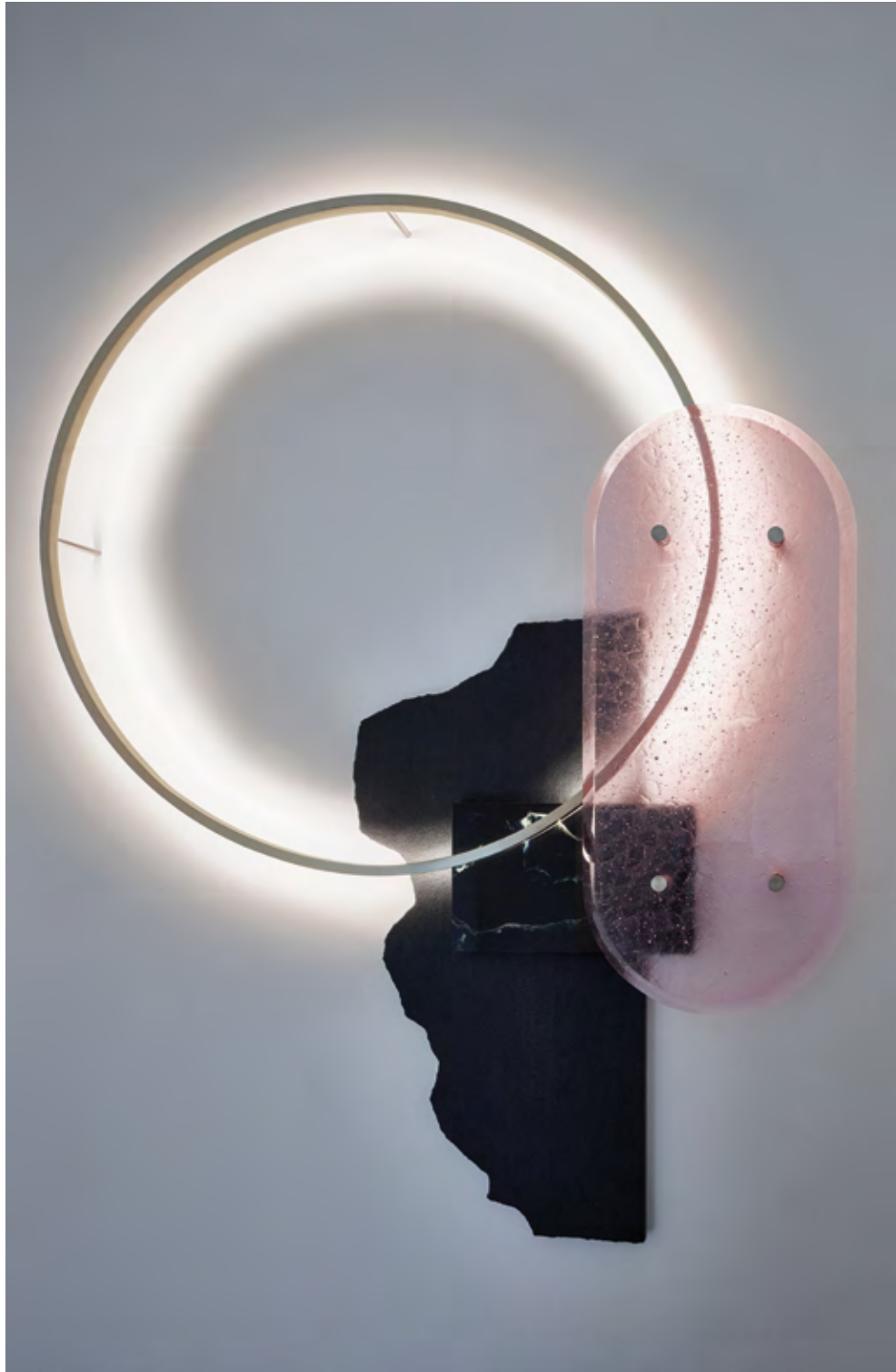


# TETRIS LIGHT & VASE

In this complex shape, strict geometric and architectural lines contrast with the organic and natural surface of the glass which is uneven and wrinkled from contact with the metal mould during production. The collection consists of a vase and a luminaire with a solid matte black fixture. The sculpture Tetris Totem follows the same idea on a larger scale by turning two elements of Tetris into one tower-like object.







# GALAXY LIGHT OBJECT

Design of a multi-material decorative glass lighting object for a private residence in Prague. The piece is composed of dark granite stone with rough edges; an oval light pink glass shape with the smooth hand-cut circuit created by the glass making technique of sintering glass, a Lithyalin plate with marble-like glass design, brushed brass details and a large circle carrying the LED light strip, generously illuminating the whole object.



SIZE  
w 143 cm x d 13 cm x h 188 cm



# PENTA LIGHT

The chandelier combines a deconstructed and newly arranged brass structure with hand-blown glass shades in various colour gradients. This gives it a playful, yet elegant appearance which is adaptable to smaller and bigger spaces.







# RESIDENT. LIGHTING IX.

For an apartment designed by RDTH architekci, DECHEM studio created luminaires which are adaptable to various room sizes. The single pendant combines a handblown glass sphere with a fixture from brushed brass and brings elegance to the smallest space. The chandeliers are provided with either three or five spheres in various colour gradients and a playful brass construction. Kono Light in a set of three brings directed work light to the kitchen island.



*SIZE PENTA LIGHT*  
Ø 80 cm × h 150 cm

*SIZE TRIPLA LIGHT*  
Ø 70 cm × h 120 cm

*SIZE KONO LIGHT MEDIUM*  
Ø 19 cm × h 52 cm

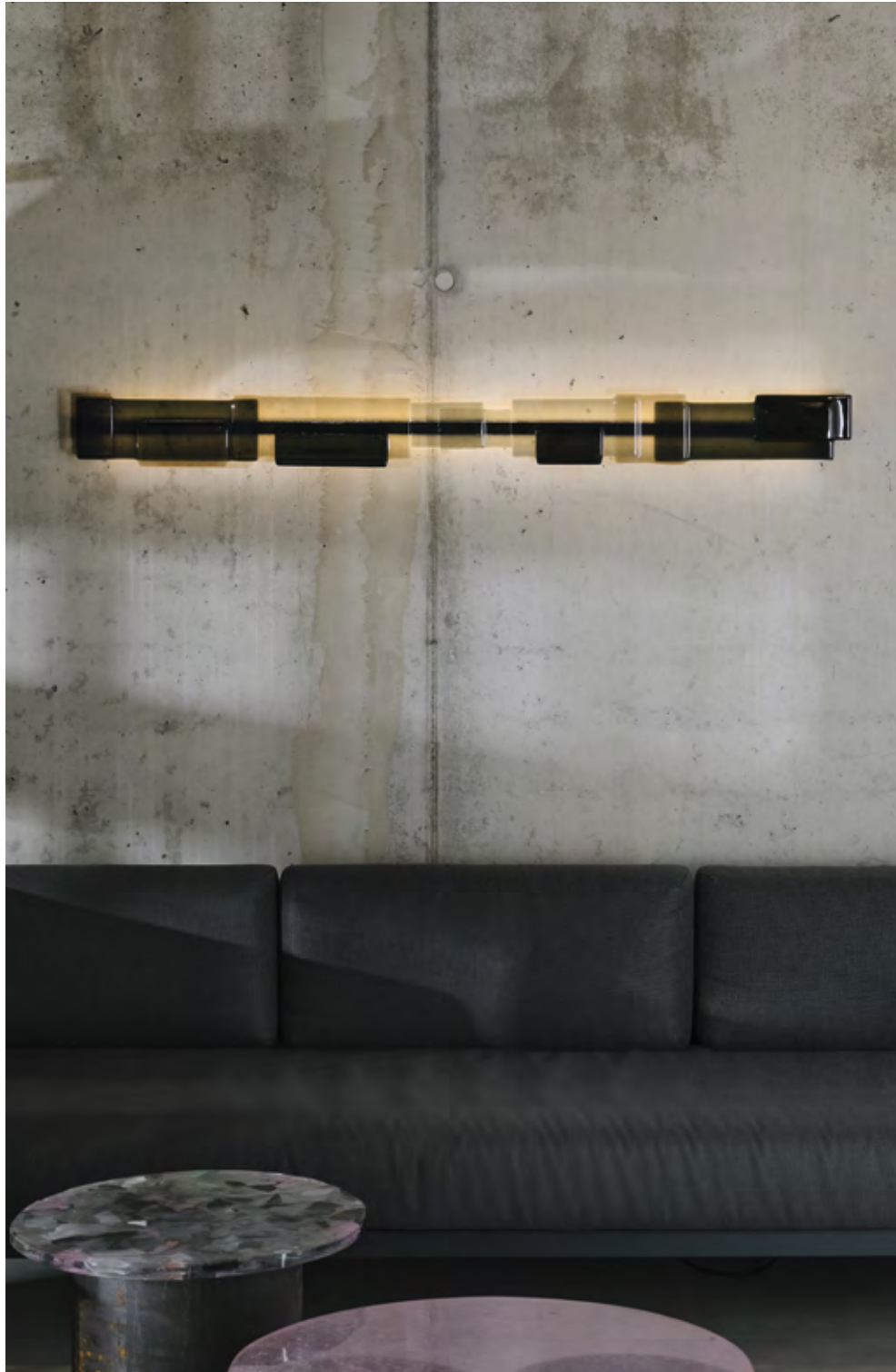


# MR.FLAME TABLE LAMP

Two completely contrasting and differently manufactured glass shapes create Mr. Flame Table Lamp. The hand faceted top with an irregular geometry, evoking an eternal flame, sits on the rounded base, available in gold, silver and dark pearl glass.







# FUNDO LIGHT

Overlapping sheets of glass are heated until they fuse together and ultimately form the shade for this collection of wall sconces. The different hues and opacities of the sheets are composed into a pattern resembling a complex patchwork.





# MILLENIUM LIGHT OBJECT

The decorative glass pendant light above the reception desk was designed in collaboration with architecture studio Formafatal and Denisa Strmísková for the Millennium lobby in Prague 1. The hanging brass construction with handblown smoke glass shades charges the space with elegant dynamics and its sculptural form gives the interior a distinctive appearance.



SIZE  
w 240 cm × d 120 cm × h 80 cm





# GLOWING VASE

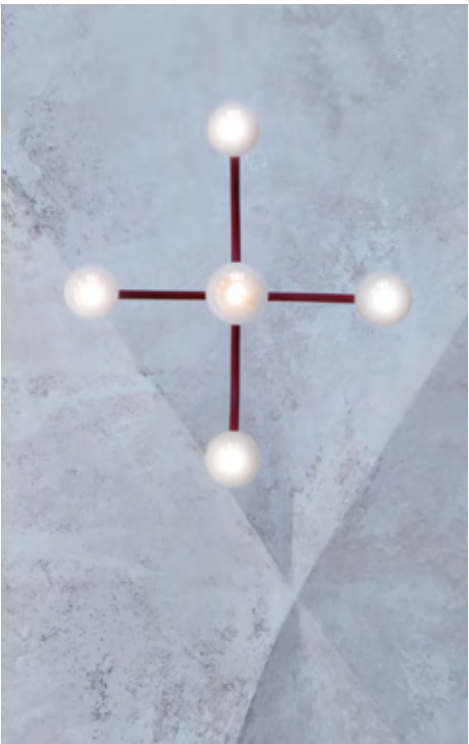
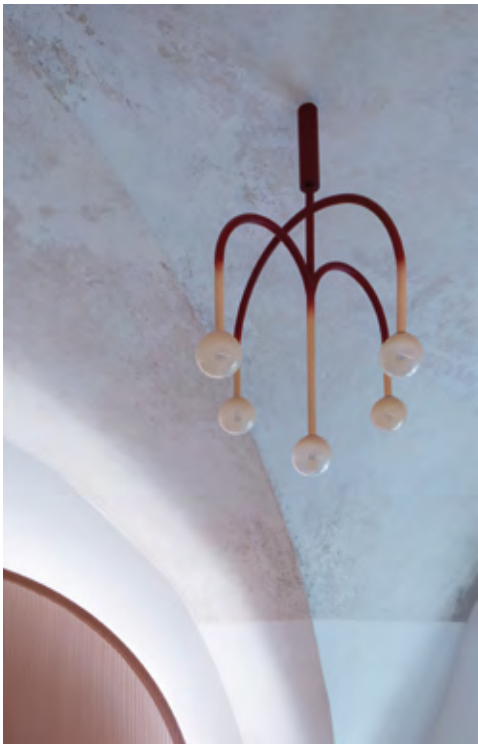
Something between vase and lamp, Glowing Vase is a hybrid interior object, produced in clear cloudy glass with a smooth gradient. The LED source is hidden in the base of the lamp, shining through the water and creating an almost magical, theatrical atmosphere.





# RESIDENT. LIGHTING XVI.

For Kabinet, a concept store in South Moravia, DECHEM studio designed a playful chandelier. Inspired by the building's historical gothic architecture and store's contemporary interior design, it features arcs of various sizes. They are painted in a colour gradient from red to nude and merge into hand blown glass spheres.



SIZE  
w 65 cm x d 60 cm x h 99 cm





# BANDASKA LIGHT

Hand-blown into beech wood moulds, Bandaska Light is based on the highly popular Bandaska Vase collection. DECHEMA's signature shape turns into an elementary suspended lamp whose crystal clear or colour gradient glass shades are complemented by brass or anthracite coated metal fixtures.





# PALLAS LIGHT

Pallas collection is named and inspired by the slightly elliptical asteroid located in the main asteroid belt. The hand-blown glass capsules give it the flexibility of looking beautiful anywhere. Its shape presents harmony, simplicity and softness, helping it to unite with any room and grounding a space at the same time.







## BANDASKA VASE

Produced in different colours and shapes, Bandaska Vase is the highlight of DECHEM's collection and its ultimate bestseller. Simple yet elegant lines are inspired by ordinary forms of traditional metal containers for water and milk, used in Czech households for ages.





# BANDASKA VASE MATTE

Hand-blown into beech wood mould, this collection of Bandaska Vase features matte surfaces and is produced in three different shapes and electrifying colours. Can be well combined with classic Bandaska Vase, too.







# VASE 19

Various colour gradient combinations of subtle muted colours create the main character of Vase 19, minimalist form of elegant lines, both in geometric and organic manner. Hand-blown into beech wood moulds, this vase is the continuation of DECHEM's investigation into ultra normal yet beautiful forms.





# VASE 20

Elegant lines and decent colour gradients are a characteristic signature of DECHEM studio. The Vase20 presents the reversed conical neck as a new feature and can be easily combined with the Vase19 or Bandaska vases as well. Hand-blown into beech wood moulds, coming in two different sizes.







# KONFETA VASE

Fragments of multicoloured glass rubies cover the surface of hand-blown vases and thus transform them into absolutely unique works of art. The monochrome or multicoloured variations are inspired by the celebration of life.





# ROURA VASE

Produced in smoke grey and black colors, Roura vase is an experimental object reflecting the idea of perfection and imperfection and its relation. A simple cylinder form is hand processed in the hot shop to destroy the geometric purity intentionally and create a vase shaped by chance. Each piece is unique.







# THE HEAT VASE

The Heat Vase belongs to DECHEM's experimental works, hand processed in the hot shop. Like Roura Vase, The Heat Vase is an organically formed piece of glass, showing how an archetypal shape is melted and altered by only using temperature. Each piece is unique.







# BLACK IN BLACK VASE

Dark glass vases with uneven surface produced in 3 different sizes. The opaque character of the glossy glass is emphasized by its wrinkled structure resembling the roughness of a stone.







# GLASSES & CARAFE

DECHEM glasses and carafes in an extensive colour range brighten up your everyday drinking routine. Hand-blown into a wooden beech mould, each piece comes with a unique colour gradient.







# FRAG- MENT GLASS

Not only out of respect for the expended energy and work of craftsmen, but also out of respect for the material itself, DECHEM studio uses the residual glass and, by remelting it, gives it another, noble life.







## BRASS SHELF

Adding a touch of opulence to any room, the Brass shelf is meant to highlight cherished mementos, beloved books, or curated objects. The strict framework from brass square tubes and folded brass sheets is contrasted by the soft sheen of its brushed surface, thus creating a captivating interior object. It is available in various sizes and can be easily customised.







# HIDDEN GERRIT

Although by its functional nature it should obstruct the view, the Hidden Gerrit screen naturally attracts the eye thanks to its sculptural form. It combines Gerrit Rietveld's aesthetics and the use of Fragmentglass. The strict rectangular geometry of the structure creates a certain tension and contrast to the glass plate. With its vivid texture of fused shards, it evokes a sequence of impressionist paintings.







# MIRROR OBJECT

The axonometric, wall mounted Mirror Object as a symbol of transience and ephemerality translates the three-dimensional relations into a flat surface. Its glass parts are connected by a black metal.





# INFINITY TABLE

The simple yet sophisticated coffee table features a minimal geometric construction combined with a marble-like decorative glass top. The metal surface contrasts with the massive glass from lithyalin glass or Fragmentglass, its texture evoking a piece of the universe.

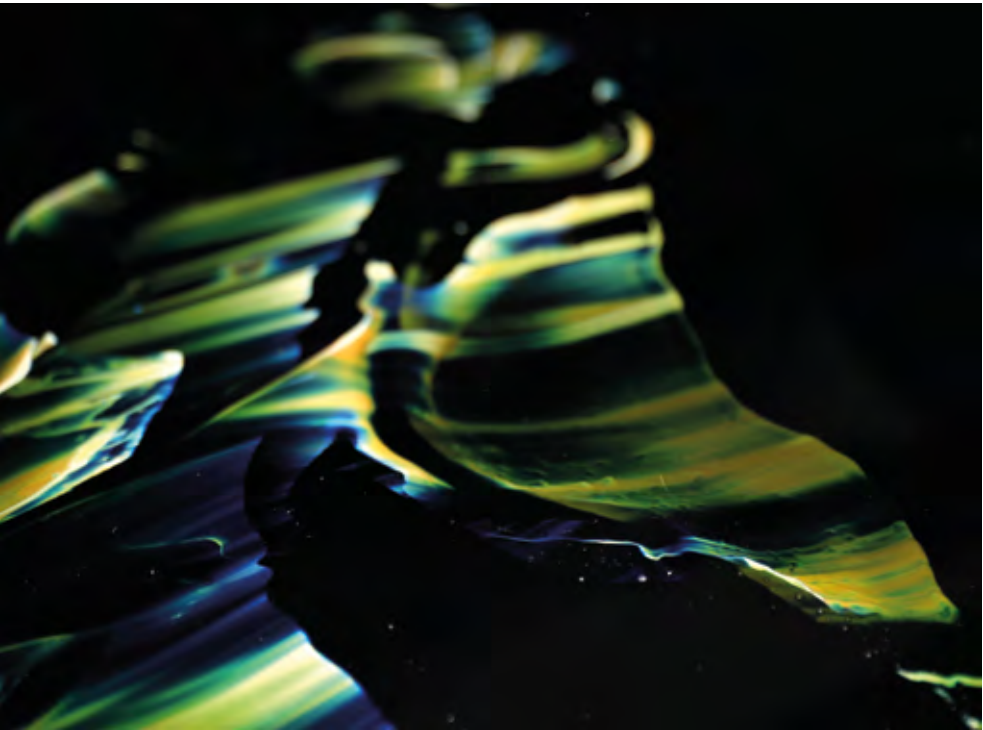
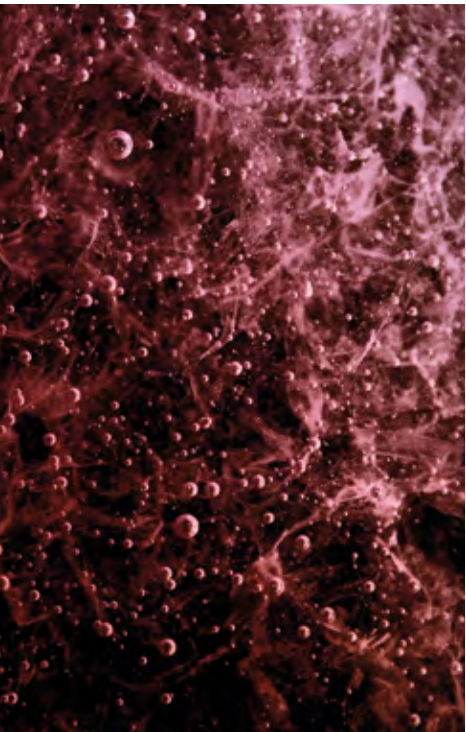
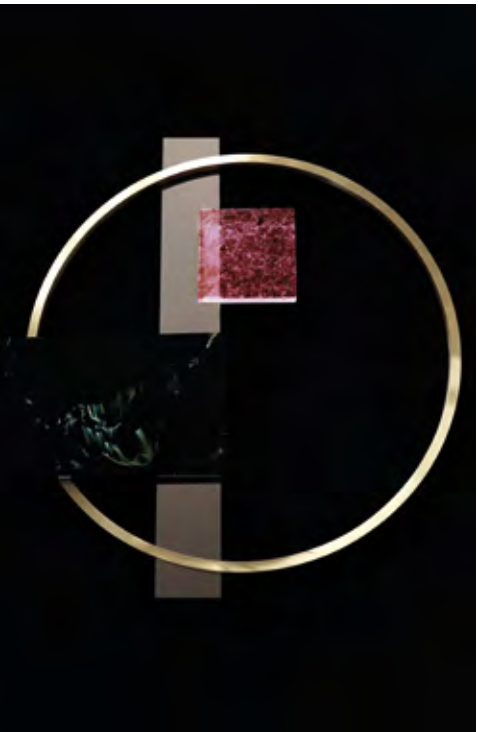






# UNIVERSE WALL OBJECT

The wall mounted Universe Wall Object is based on elementary geometric shapes exploring their spatial relations and mutual configurations. The final piece represents a very elegant contrast of organic glass design with the geometrical brass hoop and the clean surface of the mirror in the background.







# MESSIER M81 TABLE

Messier M81, a pink glass table with low legs made of raw iron, takes its name after the beautiful spiral galaxy that, despite being 12 million light-years away, is still one of the brightest to be seen from Earth. The air bubbles locked in the table's oval glass are like universes of their own, for you to get lost just as easily as in space.







# AUGARTEN TABLE

A simple silhouette characterizes Augarten Table, another elegant combination of a glass base and metal table top. This small furniture piece, inspired by raw industrial forms, represents precise glass craftsmanship and turns it into a practical object.





# GLASS TOWN

Constructed of hand cut glass and engraved colour components, the Glass Town Collection includes miniature decorative models of a cityscape, evoking the poetic idea of a town in the landscape. All the elements of simple geometry in the shapes of factories, houses, schools or barns, are individual and allow the user to assemble their own composition.







# DECHEM IN THE INTERIOR

VASE 19 tall in autumn red comes as a natural addition to a warm wooden interior.



GLOWING VASE and ECLIPSE LIGHT bring light to an elegant bedroom.



# DECHEM IN THE INTERIOR

A cluster of entirely white medium  
BANDASKA LIGHTS completes a modern airy interior.



A big BANDASKA LIGHT in absinthe green  
brings a special touch of colour to a white bathroom.



Colourful SPHAERAE LIGHTS serve  
as a centrepiece for a moody dining room setting.





# DECHEM IN THE INTERIOR

Black ROURA VASE and AUGARTEN TABLE  
complement an apartment combining soft textures  
and graphic elements.



MAGION LIGHT with a customised finish  
of patinated brass lights up an interior of blue tones.



# DECHEM IN THE INTERIOR

METALLON LIGHT OBJECT  
enriches an interior full of vivid textures.



MAGION LIGHT in crystal clear is a gentle  
addition to this dining room setting of muted colours.





# DECHEM IN THE INTERIOR

STRATOS LIGHTS in various soft colours  
naturally blend into this calm penthouse interior.



## KONO LIGHT

15

<b>MEDIUM</b> Ø 19 cm × h 52 cm 1.5 kg	<b>BIG</b> Ø 35 cm × h 66 cm 4 kg		
<b>COLOUR OF GLASS</b> crystal clear, alabaster white, smoke grey or neutral nude	<b>LIGHT SOURCE</b> GU10 LED bulb, 6 W, warm white, dimmable	<b>FIXTURE</b> brushed brass	<b>CABLE</b> textile coated, nude, 150 cm

## TROPOS TABLE LAMP

17

<b>SIZE</b> Ø 15 cm × h 25.5 cm 1.5 kg			
<b>COLOUR OF GLASS SHADE</b> powder pink, dark blue, smoke grey, crystal clear matte	<b>LIGHT SOURCE</b> E14 bulb, 230 V, 6 W, warm white	<b>FIXTURE</b> brushed brass	<b>CABLE</b> textile coated, black or white, 150 cm

## TÉSERA CHANDELIER

19

<b>SIZE</b> w 71 cm × d 71 cm × h 120 cm			
<b>COLOUR OF GLASS</b> uranium aubergine or smoke grey	<b>LIGHT SOURCE</b> G9 LED, 230 V, 25 W	<b>FIXTURE</b> brushed brass	

## SPHAERAE LIGHT

25

<b>REGULAR</b> Ø 22 cm × h 40 cm 3 kg	<b>BIG</b> Ø 34 cm × h 55 cm 5 kg		
<b>COLOUR OF GLASS</b> matte (dark blue, powder pink, poppy red, saffron orange, dark green or alabaster white) glossy (dark blue, powder pink, poppy red, saffron orange, dark green, alabaster white or crystal clear)	<b>LIGHT SOURCE</b> E14 retro bulb, 230 V, 5 W, warm white	<b>FIXTURE</b> brass or metal in white colour	<b>CABLE</b> textile coated, white, 150 cm

## ECLIPSE LIGHT

27

<b>OVAL</b> w 60 cm × h 100 cm × d 6 cm, 20 kg	<b>WALL MOUNTED</b> Ø 40 cm × d 5.5 cm 12 kg	<b>SUSPENDED HORIZONTALLY</b> Ø 50 cm × h 35 cm 15 kg	<b>SUSPENDED VERTICALLY</b> Ø 50 cm × h 60 cm 15 kg
<b>COLOUR OF GLASS</b> flat metallised glass dichroic glass	<b>LIGHT SOURCE</b> LED, 12 V, 15 W	<b>FIXTURE</b> polished brass	<b>CABLE</b> textile coated, black, 150 cm

## MAGION LIGHT

33

<b>SIZE</b> Ø 56 cm × h 68 cm 15 kg			
<b>COLOUR OF GLASS</b> smoke grey, moss green or saffron orange	<b>LIGHT SOURCE</b> E27 LED bulb, 15 W, warm white	<b>FIXTURE</b> polished brass	<b>CABLE</b> textile coated, nude, 180 cm

## STRATOS LIGHT

37

<b>SMALL CAPSULE</b> Ø 15 cm × h 22 cm 2 kg	<b>SMALL BALL</b> Ø 12 cm × h 14 cm 2 kg	<b>BIG BALL</b> Ø 18 cm × h 20 cm 2 kg	<b>BIG CAPSULE</b> Ø 20 cm × h 30 cm 2 kg
<b>COLOUR OF GLASS</b> crystal clear, smoke grey, dark green or saffron orange, neutral nude, powder pink, aubergine	<b>FIXTURE</b> aluminium	<b>LIGHT SOURCE</b> LED CHIP 6 W, 230 V, warm white	<b>CABLE</b> textile coated, black, 150 cm

## TETRIS LIGHT & VASE

41

<b>TETRIS TOTEM SIZE</b> w 29 cm × d 23 cm × h 93 cm, 20 kg	<b>TETRIS LIGHT SIZE</b> w 29 cm × d 23 cm × h 53 cm, 10 kg	<b>TETRIS VASE SIZE</b> w 29 × d 23 × h 50 cm 9 kg	
<b>COLOUR OF GLASS SHADE</b> crystal clear, alabaster white, smoke grey, poppy red or cobalt blue	<b>FIXTURE</b> E27 LED bulb, 6 W, warm white	<b>LIGHT SOURCE</b> metal in black matte colour	<b>CABLE</b> textile coated, black, 150 cm

## PENTA LIGHT

45

<b>SIZE</b> Ø 150 cm × h 200 cm (spheres Ø 23, 19, 15 cm)			
<b>COLOUR OF GLASS</b> alabaster white, neutral nude, stone grey and moss green	<b>FIXTURE</b> brushed brass	<b>LIGHT SOURCE</b> G9 LED, 230 V, 25 W	

## MR. FLAME TABLE LAMP

49

<b>SIZE</b> Ø 18 cm × h 28 cm 3 kg			
<b>COLOUR OF TOP GLASS</b> matte crystal clear, matte smoke grey or matte amber	<b>COLOUR OF BASE GLASS</b> gold, silver or dark pearl glass	<b>LIGHT SOURCE</b> E26 or E27 fluorescent bulb, 15 W, 120 V or 230 V	<b>CABLE</b> plastic coated, transparent, 180 cm

## GLOWING VASE

55

<b>SMALL</b> Ø 26 cm × h 21 cm 3 kg	<b>BIG</b> Ø 26 cm × h 35 cm 4 kg		
<b>COLOUR OF GLASS</b> white	<b>FIXTURE</b> metal in white colour or brass	<b>LIGHT SOURCE</b> LED, 12 V	<b>CABLE</b> plastic coated, transparent, 200 cm

## BANDASKA LIGHT

59

<b>BIG</b> Ø 18.5 cm × h 35.5 cm 1.5 kg	<b>TALL</b> Ø 9 cm × h 43 cm 1 kg	<b>MEDIUM</b> Ø 15.5 cm × h 38 cm 1.5 kg	
<b>COLOUR OF GLASS</b> alabaster white, smoke grey, nude neutral or aubergine	<b>FIXTURE</b> brushed brass or anthracite	<b>LIGHT SOURCE</b> E14 retro bulb, 40 W (medium, tall) E27 retro bulb, 40 W (big)	<b>CABLE</b> textile coated, nude or black, 180 cm

## PALLAS LIGHT

61

<b>CHANDELIER</b> Ø 150 cm × h 140 cm (capsules Ø 16 cm × h 25 cm)	<b>PENDANT</b> Ø 27 × h 100 cm (capsule Ø 27 cm × h 35 cm)		
<b>COLOUR OF GLASS</b> powder pink	<b>FIXTURE</b> brushed brass	<b>LIGHT SOURCE</b> E14 LED, 230 V, 6 W each	

## FUNDO LIGHT

51

<b>SIZE</b> w 15 cm × d 5 cm × h 158 cm	<b>FIXTURE</b> metal in black matte colour	<b>LIGHT SOURCE</b> LED, 12 V, 15 W	
<b>COLOUR OF GLASS</b> smoke grey			

## CLASH OF BEAUTY

31

<b>SIZE MIRROR</b> w 60 × h 65 × d 12 cm	<b>SIZE WALL LIGHT</b> w 110 × h 120 × d 12 cm	<b>MATERIALS</b> Fragmentglass, dichroic glass, brushed brass	
---------------------------------------------	---------------------------------------------------	------------------------------------------------------------------	--



## BANDASKA VASE

63

<b>MINI</b> Ø 7.5 cm × h 10 cm 0.2 kg	<b>TALL</b> Ø 9 cm × h 31 cm 0.5 kg	<b>MEDIUM</b> Ø 15.5 cm × h 25 cm 1 kg	<b>BIG</b> Ø 18.5 cm × h 23 cm 1 kg
<b>XL</b> Ø 22 cm × h 36 cm 3 kg	<b>XXL</b> Ø 30 cm × h 46 cm 5.5 kg		

**COLOUR OF GLASS**  
absinthe green, alabaster white, cobalt blue, mint green, neon yellow, nude neutral, opalescent blue, poppy red, powder pink, saffron orange, smoke grey or stone grey, moss green, aubergine

## BANDASKA VASE MATTE

65

<b>TALL</b> Ø 9 cm × h 31 cm 0.5 kg	<b>MEDIUM</b> Ø 15.5 cm × h 25 cm 1 kg	<b>BIG</b> Ø 18.5 cm × h 23 cm 1 kg
<b>COLOUR OF GLASS</b> black, dark blue or uranium yellow		

## VASE 19

67

<b>BIG</b> Ø 18 cm × h 29 cm 1.5 kg	<b>TALL</b> Ø 18 cm × h 37 cm 2 kg
<b>COLOUR OF GLASS</b> dark green, autumn red, ochre, plum blue or sienna	

## VASE 20

69

<b>BIG</b> Ø 20 cm × h 30 cm 2 kg	<b>SMALL</b> Ø 14 cm × h 20 cm 1 kg
<b>COLOUR OF GLASS</b> white matte, crystal clear, moss green, autumn red, powder pink, sienna	

## KONFETA VASE

71

<b>VASE 19 BIG</b> Ø 18 cm × h 29 cm 2 kg	<b>VASE 19 TALL</b> Ø 18 cm × h 37 cm 2.5 kg	<b>BANDASKA MEDIUM</b> Ø 15.5 cm × h 25 cm 1.5 kg	<b>VASE 20 BIG</b> Ø 20 cm × h 30 cm 2 kg
<b>COLOUR OF GLASS</b> absinthe green, alabaster white, autumn red, cobalt blue, crystal clear, dark green, mint green, moss green, aubergine, neon yellow, nude neutral, ochre, opalescent blue, poppy red, powder pink, saffron orange, sienna, smoke grey, stone grey, plum blue or white matte			

## ROURA VASE

73

<b>MEDIUM</b> Ø 15 cm × h 43 cm 3 kg	<b>BIG</b> Ø 20 x h 55 cm 12 kg
<b>COLOUR OF GLASS</b> black, smoke grey or uranium	

## THE HEAT VASE

75

<b>SIZE</b> Ø 20 cm × h 24 cm 1.5 kg	
<b>COLOUR OF GLASS</b> black, smoke grey, auber- gine, autumn red, neutral nude	<i>all colours are available in matte and glossy</i>

## BLACK IN BLACK VASE

77

<b>MEDIUM</b> l 35 cm × w 20cm × h 26.5 cm	<b>TALL</b> l 15 cm × w 15 cm × h 56.5 cm	<b>BIG</b> l 20 cm × w 15 cm × h 41.5 cm
<b>COLOUR OF GLASS</b> black <i>available in matte and glossy</i>		

## GLASSES & CARAFE

79

<b>GLASS</b> Ø 7.5 cm × h 7 cm	<b>CARAFE</b> Ø 8 cm × h 23.5 cm
-----------------------------------	-------------------------------------

**COLOUR OF GLASS**  
absinthe green, alabaster white, cobalt blue, mint green, moss green, aubergine, neon yellow, nude neutral, opalescent blue, poppy red, powder pink, saffron orange, smoke grey, stone grey or plum blue

## AUGARTEN TABLE

95

## INFINITY TABLE

89

<b>SIZE</b> Ø 35 cm × h 45 cm 9 kg	
<b>COLOUR OF GLASS</b> smoke grey or powder pink	<b>TABLE TOP</b> black coated metal or brushed brass

<b>SIZE</b> w 45 cm × h 45 cm × d 27 cm 20 kg
<b>MATERIALS</b> lithyalin glass, black coated metal

## MESSIER M81 TABLE

93

## HIDDEN GERRIT

85

<b>SIZE</b> w 148 × d 68 × h 45 cm
<b>COLOUR OF GLASS</b> pink cast glass, brushed brass, raw iron

<b>SIZE</b> w 75 × h 190 × d 13 cm 10 kg
<b>MATERIALS</b> Fragmentglass, matte black fixture

## BRASS SHELF

83

## MIRROR OBJECT

87

<b>SIZE</b> w 150 × h 228 × 30 cm
<b>MATERIALS</b> brass

<b>SIZE</b> w 53 cm × h 70 cm × d 2 cm 10 kg
<b>MATERIALS</b> lithyalin glass, silver coated glass, black coated metal or brass frame

## UNIVERSE WALL OBJECT

91

<b>VASE 19 BIG</b> w 95 cm × h 90 cm × d 5 cm 10 kg
<b>MATERIALS</b> lithyalin glass, silver coated glass, red cast glass, brushed brass

## GLASS TOWN

97

<b>GLASS VILLAGE</b> Ø 10 cm × h 18 cm 1.5 kg	<b>GLASS MOUNTAIN</b> Ø 11 cm × h 21 cm 2.5 kg	<b>GLASS TOWN</b> Ø 30 cm × h 23.5 cm 5 kg
-----------------------------------------------------	------------------------------------------------------	--------------------------------------------------

**COLOUR OF GLASS**  
crystal clear, beryl green, alex violet, rosalin, topas, eldor yellow, aquamarine blue (Glass Town)  
crystal clear, beryl green, rosalin, smoke grey, aquamarine blue (Glass Mountain)  
crystal clear, beryl green (Glass Village)

# GLASS COLOUR

Colours add a mesmerizing dimension to every glass object. The enchanting hues are achieved through the addition of various metal oxides and minerals during the manufacturing process. Transparent glass allows light to pass through, creating prisms of colour. Opacity, on the other hand, transforms glass into a canvas, reflecting and refracting light in unexpected ways.





# GLASS TECHNI- QUES

Glass techniques open a realm of artistic possibilities. They allow to transform glass into intricate patterns, textures, and forms, enhancing visual interest and adding sophistication.



## WOODEN MOULD

Handblown glass of rotational shape is traditionally produced by using watered wooden moulds which ensure a smooth and glossy glass surface.



## METAL MOULD

Blowing glass into a metal mould creates an interesting structural appearance: The contact of the hot liquid glass with the cold metal material results in a wrinkled and uneven surface.



## OPTICAL DECOR

Glassmakers use metal moulds when imposing decorative, haptically perceptible patterns to a body of glass, such as stripes, cricles or diamonds.



## SHAPING GLASS

In its hot state, glass can be shaped in endless ways. Products like Roura Vase and The Heat Vase use this effect, receiving unique shapes by twisting the glassblowing pipe.



## ENGRAVED GLASS

Engraving is one of the most traditional techniques to enrich glass. The possibilities range from geometric patterns to filigree drawings.



## CUT GLASS

Cut glass has been decorated through a cutting process, creating intricate patterns, facets, and designs on the surface of the glass.



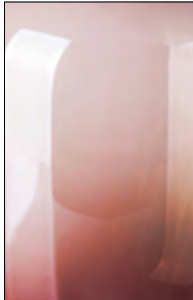
## FACETED GLASS

Faceted glass, or glass with facets, has been cut or shaped with flat surfaces, creating multiple small, flat, and often geometric facets on its surface.



## PAINTED GLASS

Glass painting techniques may include traditional methods like kiln-fired enamel painting or more modern approaches such as UV-cured paints.



## COLOUR GRADIENT

The colour gradient in the glass is a signature of DECHEM products. It usually fades from an opaque colour into crystal clear glass.



## COLOUR INLAY

Colour inlays refer to the incorporation of coloured glass elements into the molten glass, allowing for the creation of intentional colour patterns.



## AIR BUBBLES

Introducing air bubbles into the hot glass, gives it a lively texture and results in one-of-a-kind pieces. When interacting with light, the air bubbles create a special sparkling effect.



## METAL POWDER

Adding metal dust to the hot glass can colour the glass and cause air bubbles as well as streaks to appear in a wild manner. Different types of metal create different colours and outcome.



## MATTE SURFACE

Unlike traditional glossy glass surfaces that reflect light sharply, matte glass scatters light, creating a softer and less shiny appearance.



## SILVERED GLASS

The silvering process involves applying a thin layer of metallic substance, often silver nitrate or aluminium, to the back surface of the glass. This reflective coating creates a mirror-like finish.



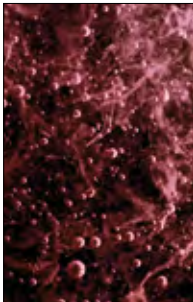
## GLUEING

Glueing allows for the bonding of separate elements without the need for traditional framing or supports, ensuring a seamless appearance.



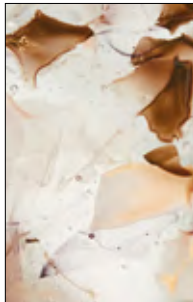
## CAST GLASS

Cast glass is produced by melting glass into a mould, allowing it to take on the shape and texture of the mould as it cools and solidifies.



## CAST GLASS WITH BUBBLES

Adding intentional air bubbles to cast glass can be a creative technique that enhances the artistic appeal of the finished piece.



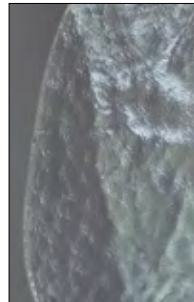
## FRAGMENT GLASS

DECHEM's new material uses residual glass which is remelted into colourful glass boards.



## LITHYALIN GLASS

Lithyalin glass is an old glass-making technique characterized by its swirls or marbled patterns, resembling natural stones.



## FLAT ROLLED GLASS

The organically shaped glass sheets are the result of molten glass being poured on a metal board and then rolled out like dough.



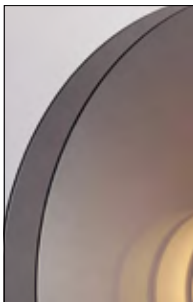
## FUSED GLASS

Fused glass is a technique where multiple pieces of glass are heated in a kiln until they bond together, creating a single, unified piece.



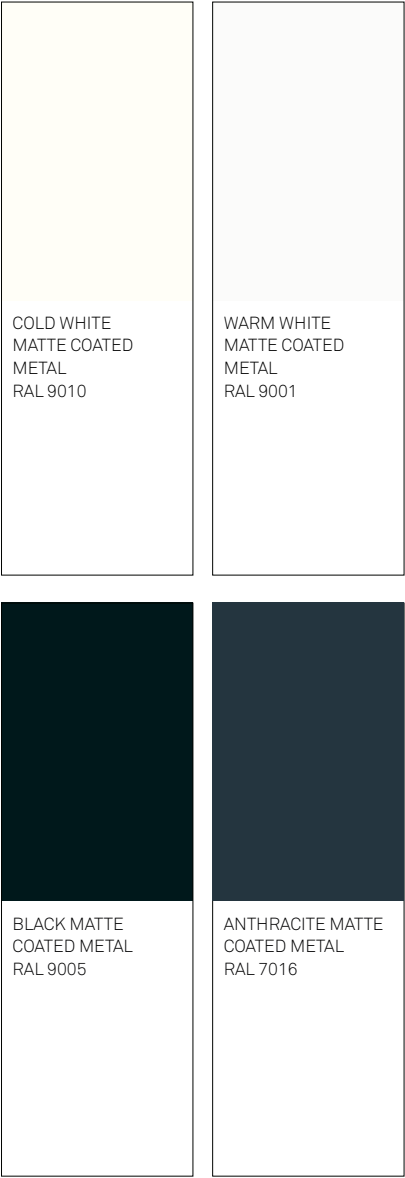
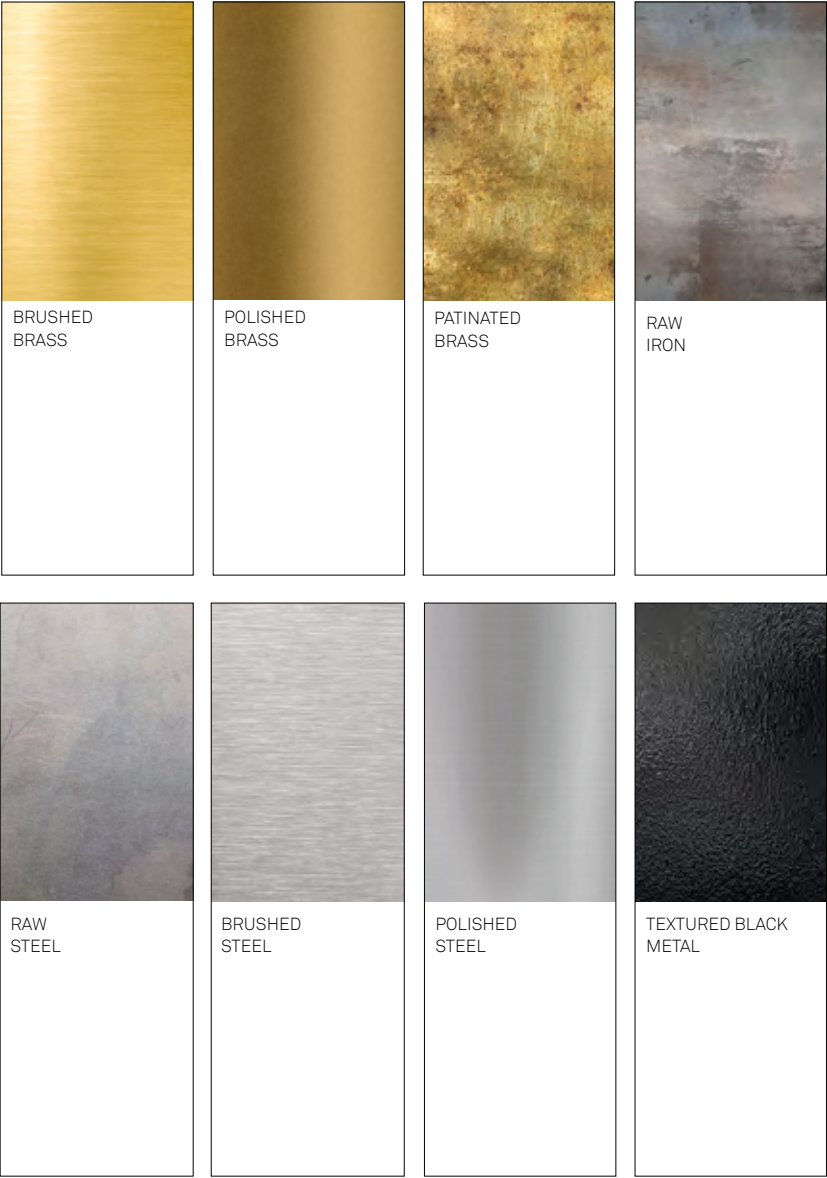
## DICHROIC GLASS

When viewed from different angles or under varying light-ing conditions, dichroic glass can appear to be one color, then shift to another.



## METALLISED GLASS

Metallized glass has been coated with a thin layer of metal, forming a reflective surface on the glass. It finds use in various industries, including automotive, architecture, and electronics.



# METAL

Metals serve as versatile and enduring elements, adding both functionality and aesthetic appeal. Often used in their natural appearance, they can also be customised in a wide range of colours.

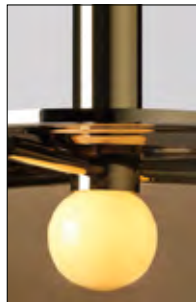




E14 retro bulb WARM  
WHITE



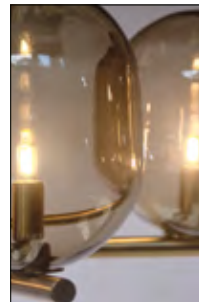
E27 retro bulb WARM  
WHITE



E27 LED WARM  
WHITE



GU10 WARM WHITE



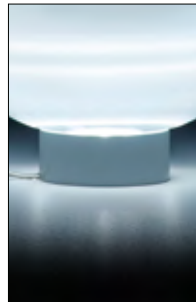
G9  
WARM WHITE



LED STRIP  
LINEAR



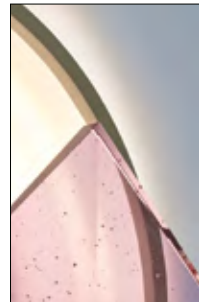
LED CHIP WARM  
WHITE



LED STRIP COLD  
WHITE



LED STRIP WARM  
WHITE



LED STRIP  
CIRCULAR

# LIGHT SOURCE

The choice of a light source in design is pivotal, as the right lighting not only illuminates a space but also defines its character, playing a crucial role in the overall design aesthetic.



DECHEM Showroom







DECHEM Showroom –The Window Gallery

Beautiful photographs by:

BoysPlayNice  
Martin Chum  
Kristina Hrabětová  
Adéla Havelková  
Petr Krejčí  
David Maslowski  
Bet Orten  
Vojtěch Veškrna  
Alex Výroubal  
Karin Zadrlick

DECHEM Showroom

Na Zátorách 7  
170 00 Praha 7  
Czech Republic  
+420 792 642 508

DECHEM Studio s.r.o

V Háji 1243/35  
170 00 Praha 7  
Czech Republic  
VAT: CZ-06898408

Contact

info@dechemstudio.com  
dechemstudio.com  
#dechemstudio  
+420 605 533 446