

CASAMONTE

INTRODUCTION

Casamonte was founded on the belief that true artistry is a collaborative journey. Inspired by the timeless interplay of texture and design, Casamonte partners with distinguished artists and designers to craft surfaces that are both transformative and enduring. Through these partnerships, we have crafted collections that transcend trends, standing as timeless testaments to the power of design to inspire and connect. With every collection, we invite our customers to see their spaces not just as places, but as canvases for self-expression and stories waiting to be told.



AUDREY LANE



Founded in 2017 by Jennifer and Holli—two self-proclaimed tile nerds with a shared love for bold ideas and beautiful spaces—Audrey Lane transforms interior designers' wildest visions into stunning custom realities. Their artistry in luxury tile spans everything from intricate waterjet designs, custom mosaics, to high-definition digital creations, and now, they're channeling that same creative energy into their newest passion: statement-making commercial wall coverings.

Audrey Lane believes luxury design should be as effortless as it is elevated. That's why industry powerhouses like Marc Michaels Interior Design, Banko Design, CID Design Group, and Brianna Michelle Design trust us to bring their most ambitious projects to life. With multiple Product Design Competition wins, a nationwide network of design partners, and digital tools that make customization a breeze, they're redefining what's possible in interiors.

INKFIELD



Inkfield is a modern botanical with an artistic edge—layered florals rendered in expressive, inky brushstrokes that feel spontaneous, loose, and intentionally imperfect. The composition balances structure and softness, creating a rhythmic field of blooms that feels immersive without overwhelming the space. Inspired by gestural painting and abstract florals, Inkfield delivers drama with restraint. Printed on a 52" wide roll, the pattern is available in two repeat scale options—26" and 52"—allowing designers to tailor the visual impact from refined and intimate to bold and statement-making. Ideal for hospitality interiors, dining spaces, feature walls, and elevated residential settings, Inkfield brings a confident, art-forward presence to the wall—reading as a cohesive backdrop from afar and revealing painterly detail up close. Available in 12 standard colorways, ranging from high-contrast classics to soft, tonal neutrals. Custom colorways are also available, offering flexibility to align with brand palettes, material selections, or project-specific design narratives.

52"



GRANDE

52"



TITAN



INKFIELD

GRANDE SCALE: 26" repeat (2 repeats per roll width) | TITAN SCALE: 52" repeat (1 repeat per roll width)

Category V, WA-101, Type II Vinyl | Backing: Woven | Roll Width: 52 in. (132cm) | Weight: 20oz | Made in USA | Available in PVC Free, Waterproof & Microvent substrates for an extra fee | Custom colors available upon request









INK BLOOM



Ink Bloom is an expressive study of contrast and movement—delicate floral forms rendered in inky strokes that feel atmospheric, fluid, and intentionally imperfect. The design captures the softness of petals dissolving into the page, creating a layered composition that feels both romantic and modern. Inspired by ink wash paintings and editorial florals, Ink Bloom brings depth and drama without heaviness. Printed on a 52" wide roll, the pattern is available in two repeat scale options—26" and 52"—allowing designers to adjust the visual rhythm from subtle and intimate to bold and immersive. Perfect for hospitality suites, boutique hotels, statement corridors, and elevated residential spaces, Ink Bloom offers a refined backdrop that feels curated, artistic, and quietly captivating. Available in 12 standard colorways, from deep, dramatic tones to soft, tonal neutrals. Custom colorways are also available, giving designers full freedom to align the artwork with brand palettes, material stories, or project-specific visions.

52"



GRANDE

52"



TITAN

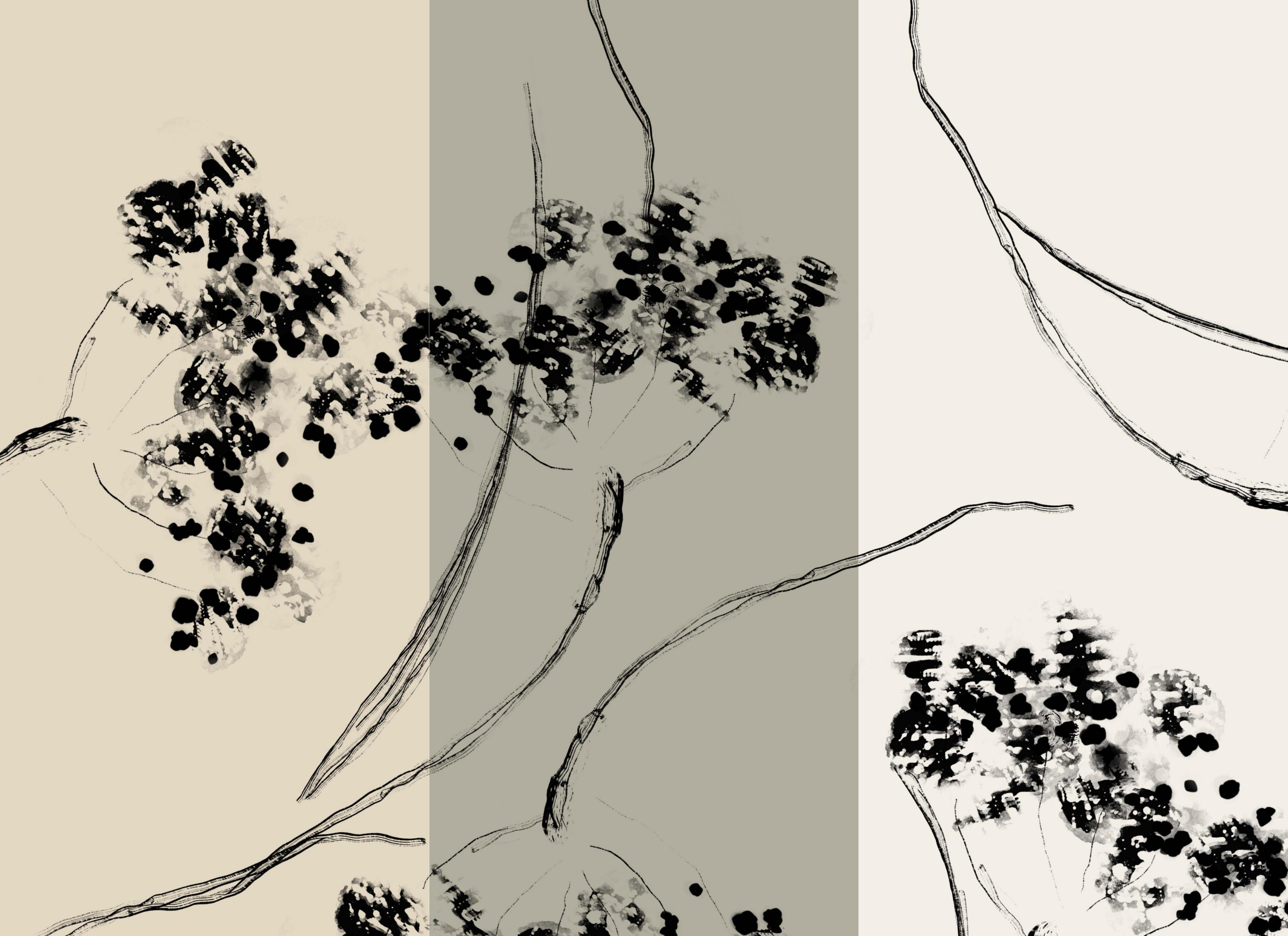


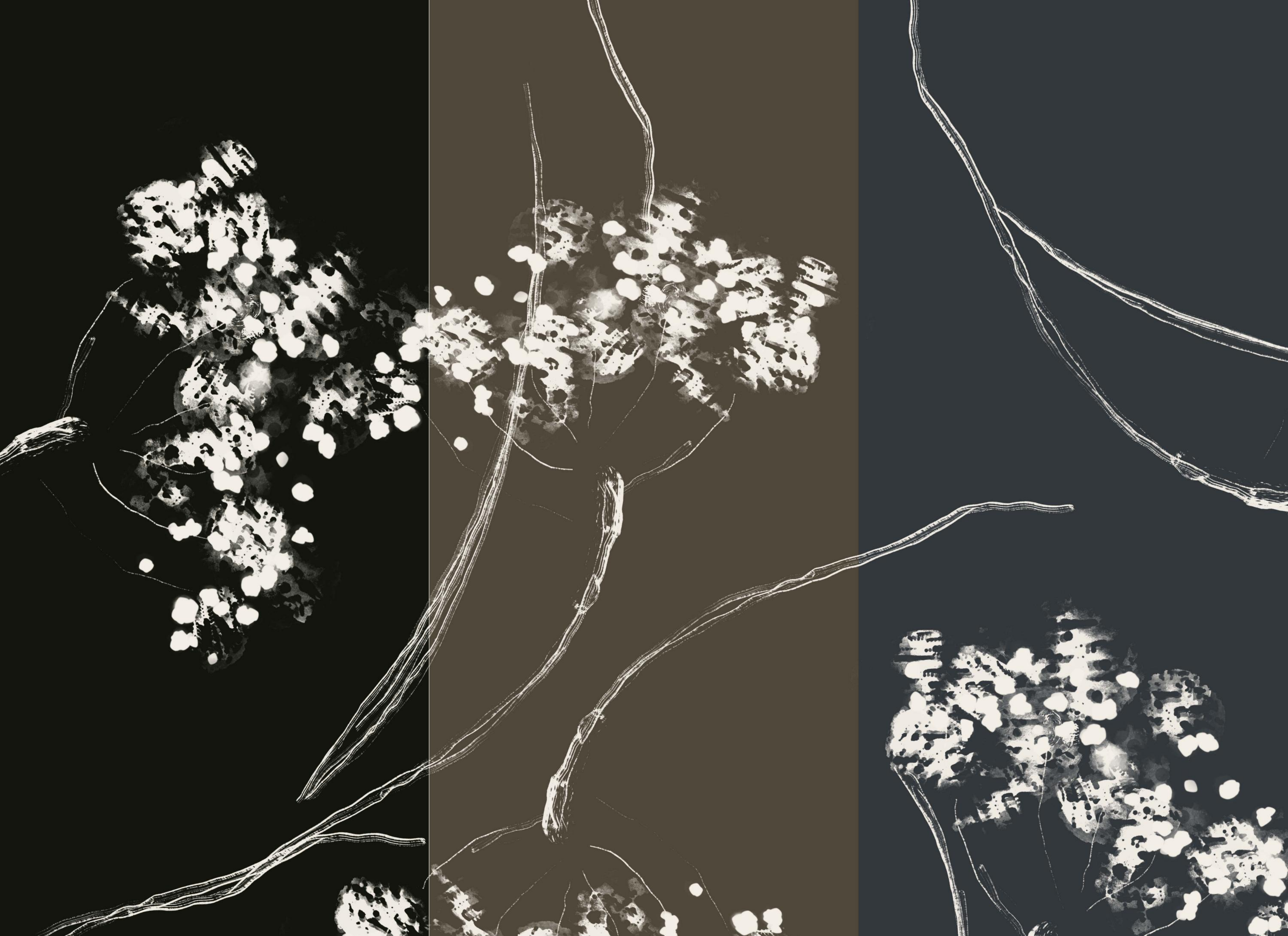
INKBLOOM - BLEACHED DENIM |GRANDE SCALE

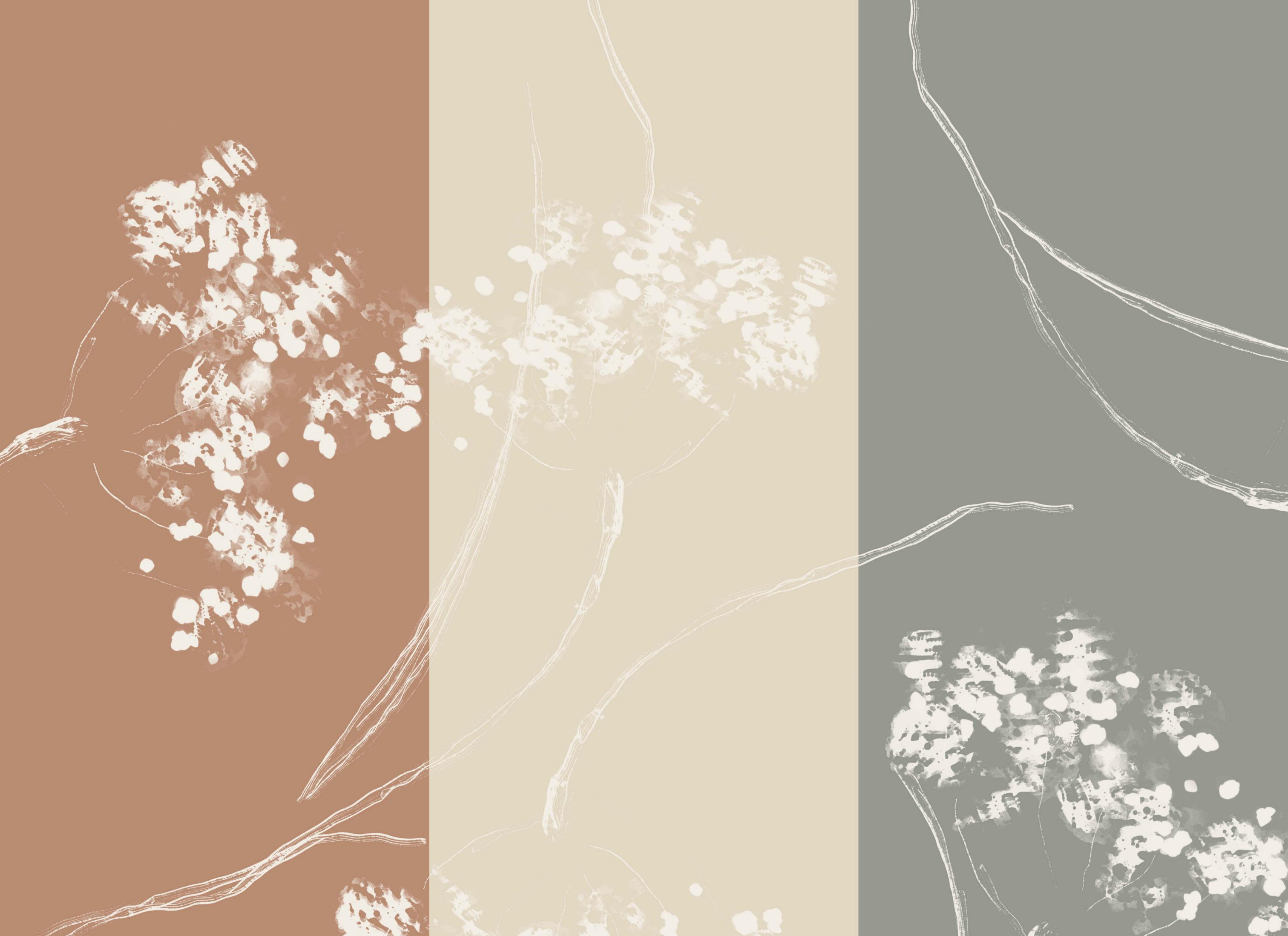
INK BLOOM

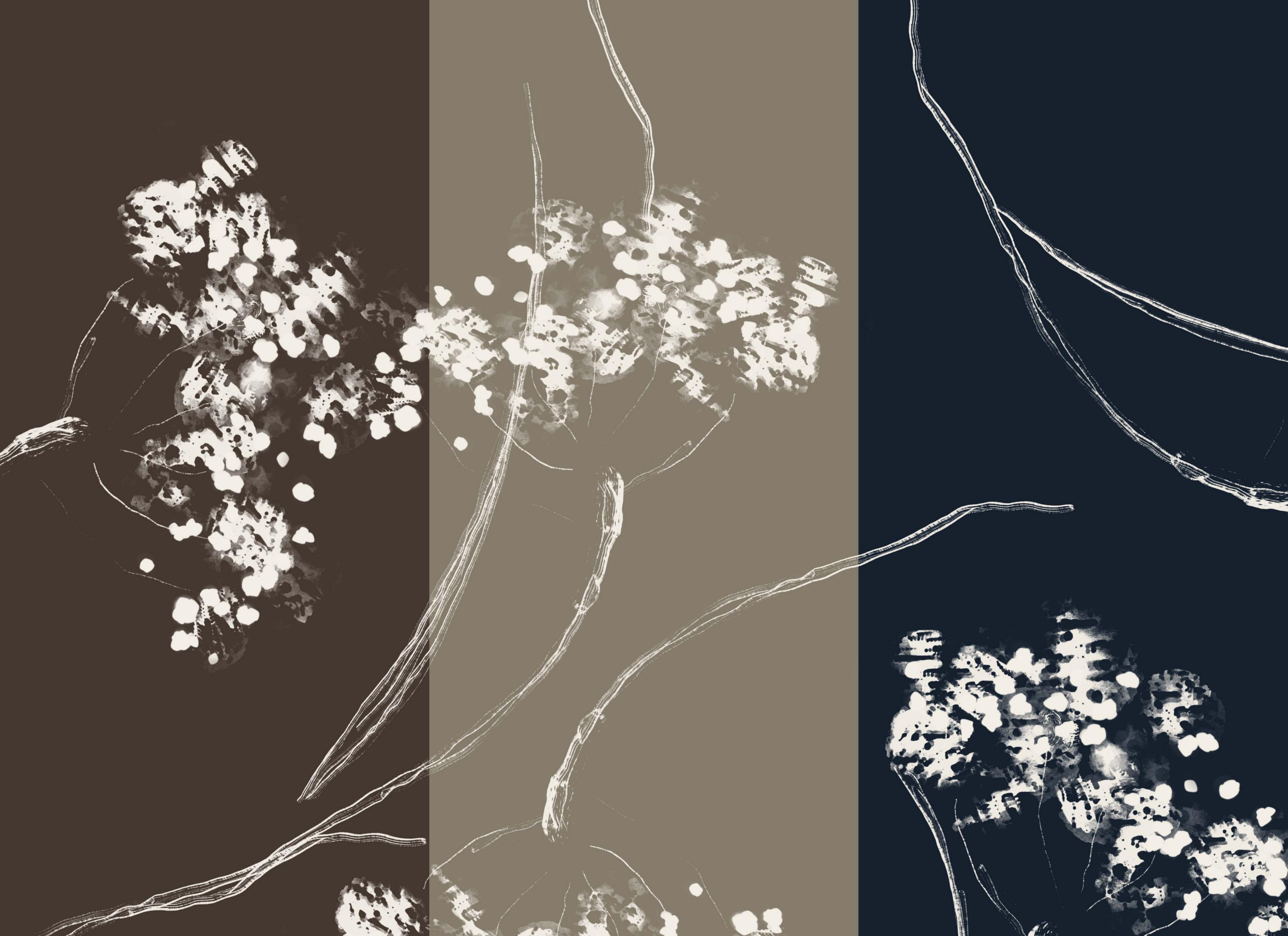
GRANDE SCALE: 26" repeat (2 repeats per roll width) | TITAN SCALE: 52" repeat (1 repeat per roll width)

Category V, WA-101, Type II Vinyl | Backing: Woven | Roll Width: 52 in. (132cm) | Weight: 20oz | Made in USA | Available in PVC Free, Waterproof & Microvent substrates for an extra fee | Custom colors available upon request







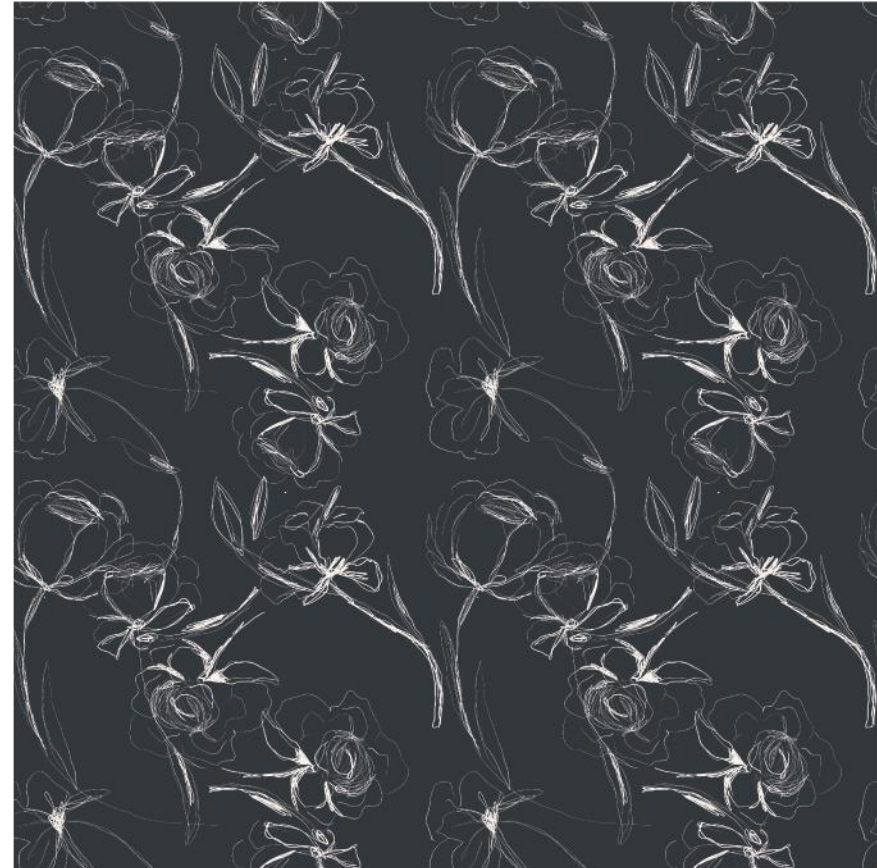


FLORAL DRAFT



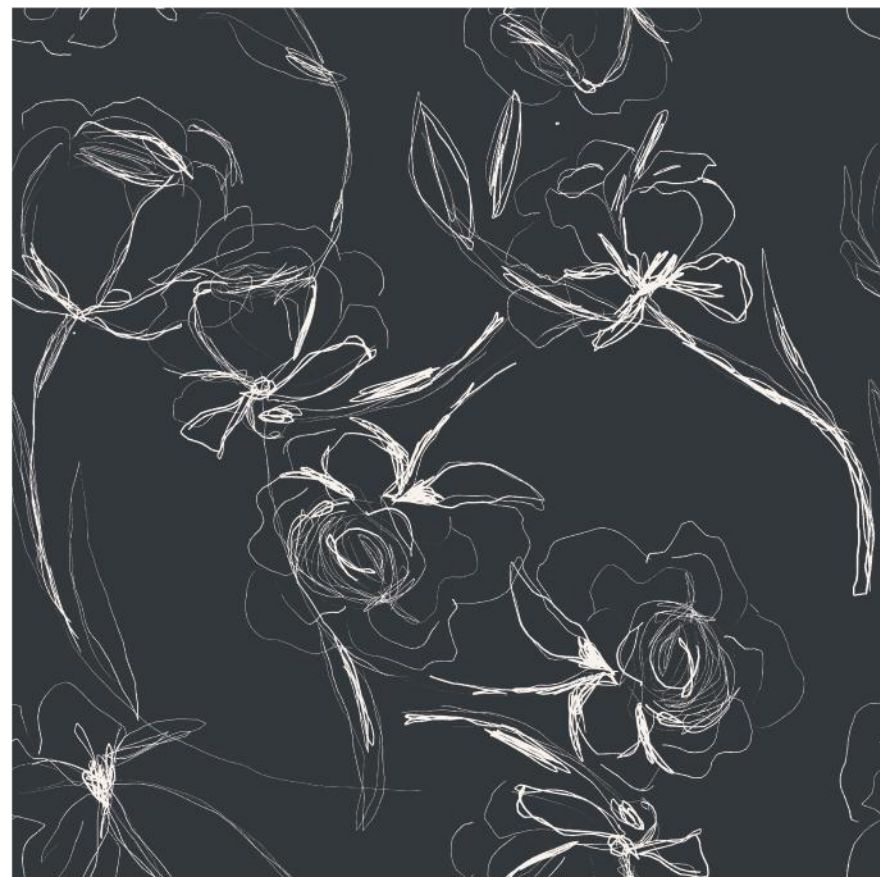
Floral Draft captures the beauty of a hand-drawn moment—loose, expressive florals sketched in motion, then translated into a large-scale wallcovering with graphic clarity. The artwork feels spontaneous and refined all at once, balancing soft movement with confident line work for a look that’s modern, artistic, and quietly dramatic. Inspired by fashion illustration and editorial prints, Floral Draft creates rhythm across the wall without overwhelming the space. Printed on a 52" wide roll, the design is available in two repeat scale options—26" and 52"—allowing designers to fine-tune the visual impact for anything from intimate spaces to expansive walls and corridors. From boutique hotels and hospitality lounges to residential feature walls, Floral Draft delivers an elevated backdrop that feels intentional, layered, and effortlessly cool. Offered in 12 standard colorways, each palette brings a distinct mood—from bold contrast to soft, tonal neutrals. Custom colorways are also available, giving designers the flexibility to align the artwork seamlessly with brand standards, material palettes, or project-specific color stories.

52"



GRANDE

52"



TITAN



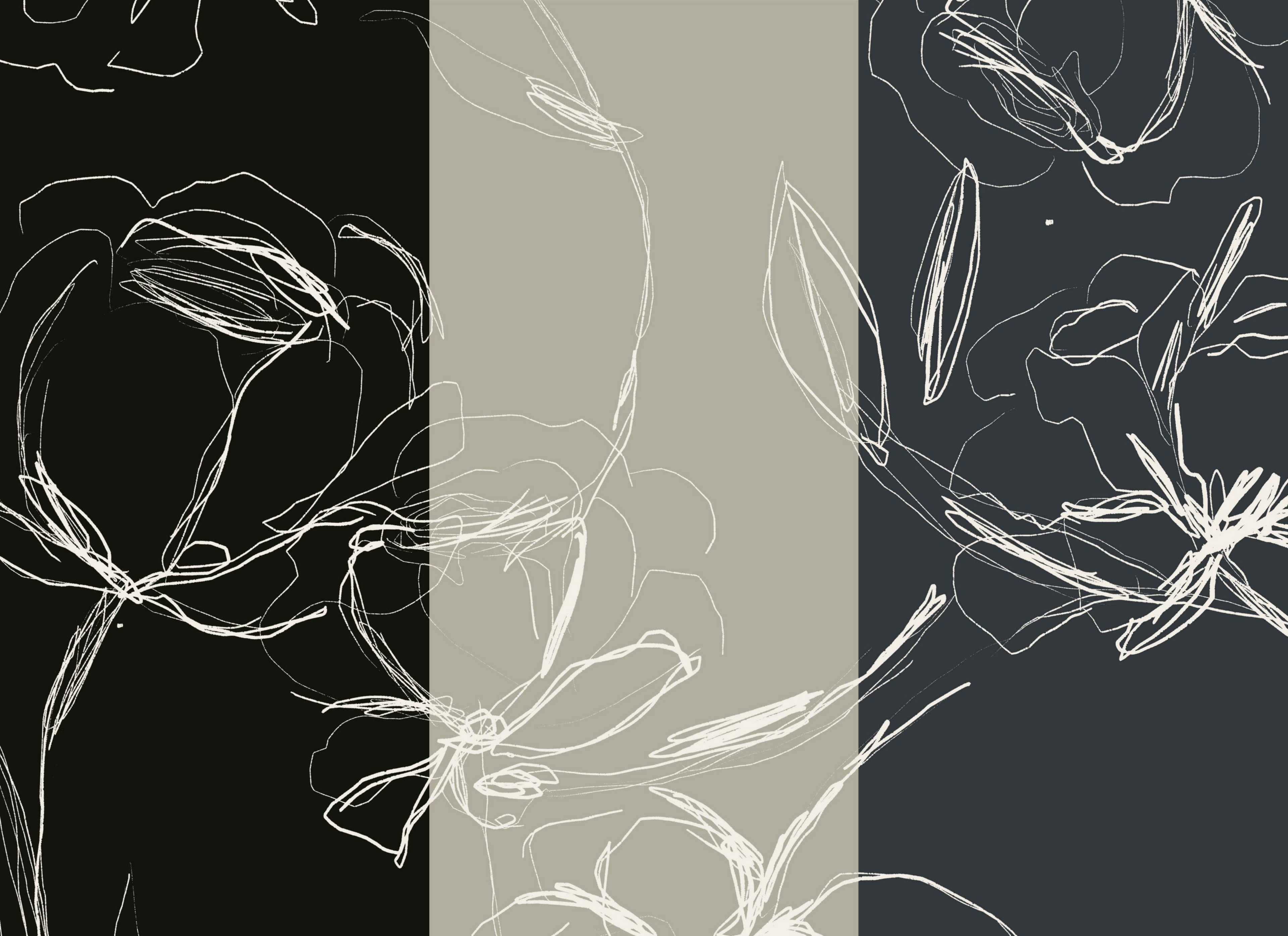
FLORAL DRAFT - SOFT CARBON | TITAN SCALE

FLORAL DRAFT

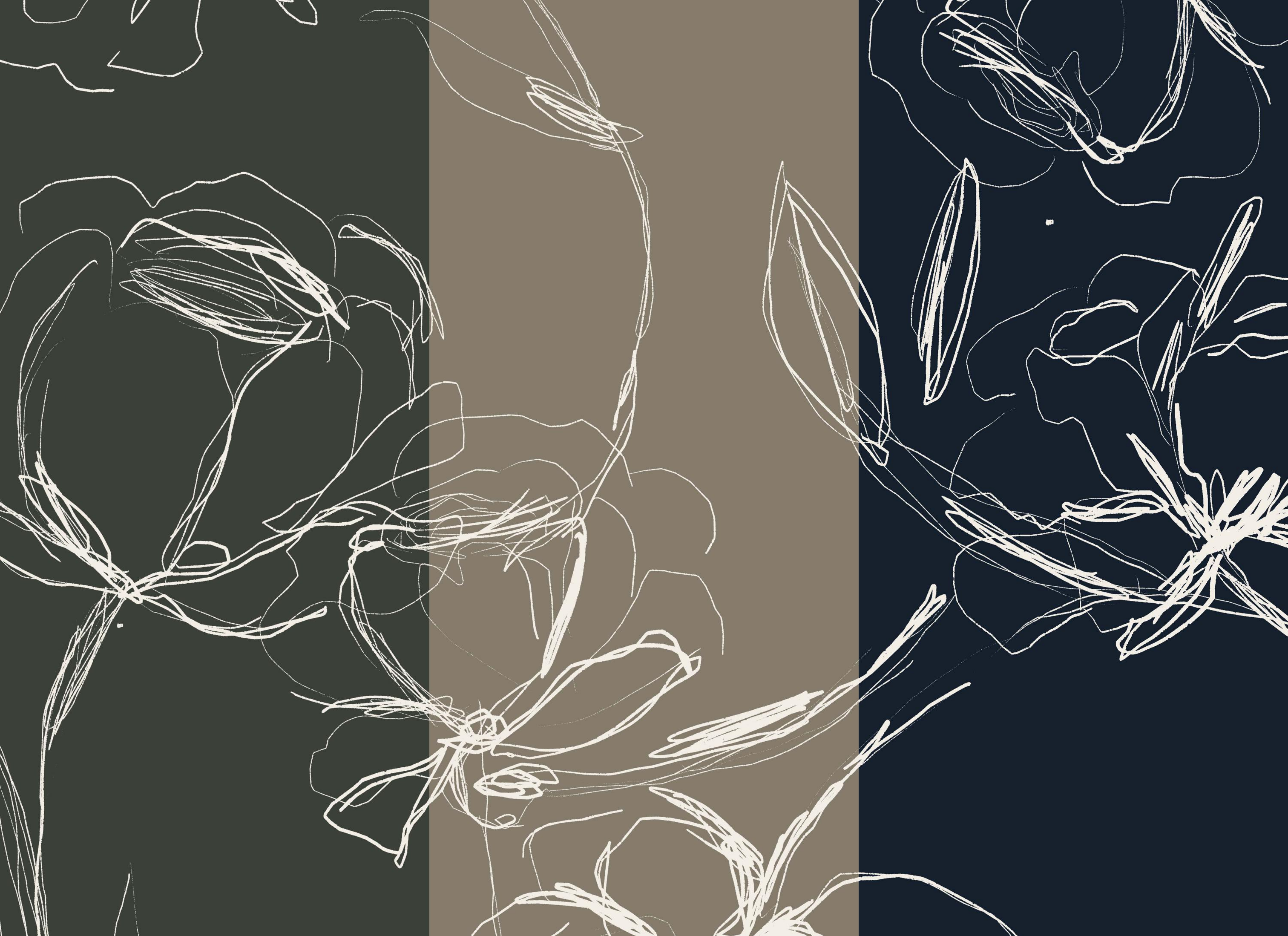
GRANDE SCALE: 26" repeat (2 repeats per roll width) | TITAN SCALE: 52" repeat (1 repeat per roll width)

Category V, WA-101, Type II Vinyl | Backing: Woven | Roll Width: 52 in. (132cm) | Weight: 20oz | Made in USA | Available in PVC Free, Waterproof & Microvent substrates for an extra fee | Custom colors available upon request









SHADOW LEAF



Shadowleaf is an expressive botanical rendered in motion—sweeping leaf forms layered with soft shadows and blurred edges that feel airy, fluid, and quietly dramatic. The artwork captures the impression of leaves caught in passing light, creating a wallcovering that feels organic, calming, and art-forward. Inspired by gestural brushwork and natural movement, Shadowleaf delivers visual flow without rigidity. Printed on a 52" wide roll, the design is offered in two repeat scale options—26" and 52"—allowing designers to tailor the scale from subtle and serene to bold and immersive depending on the space. Ideal for hospitality interiors, wellness spaces, guestrooms, corridors, and elevated residential settings, Shadowleaf brings softness and depth to the wall while maintaining a refined, architectural presence. Available in 12 standard colorways, from airy neutrals to richer, grounding tones. Custom colorways are also available, offering flexibility to align with brand palettes, material stories, or project-specific design visions.

52"



GRANDE

52"



TITAN



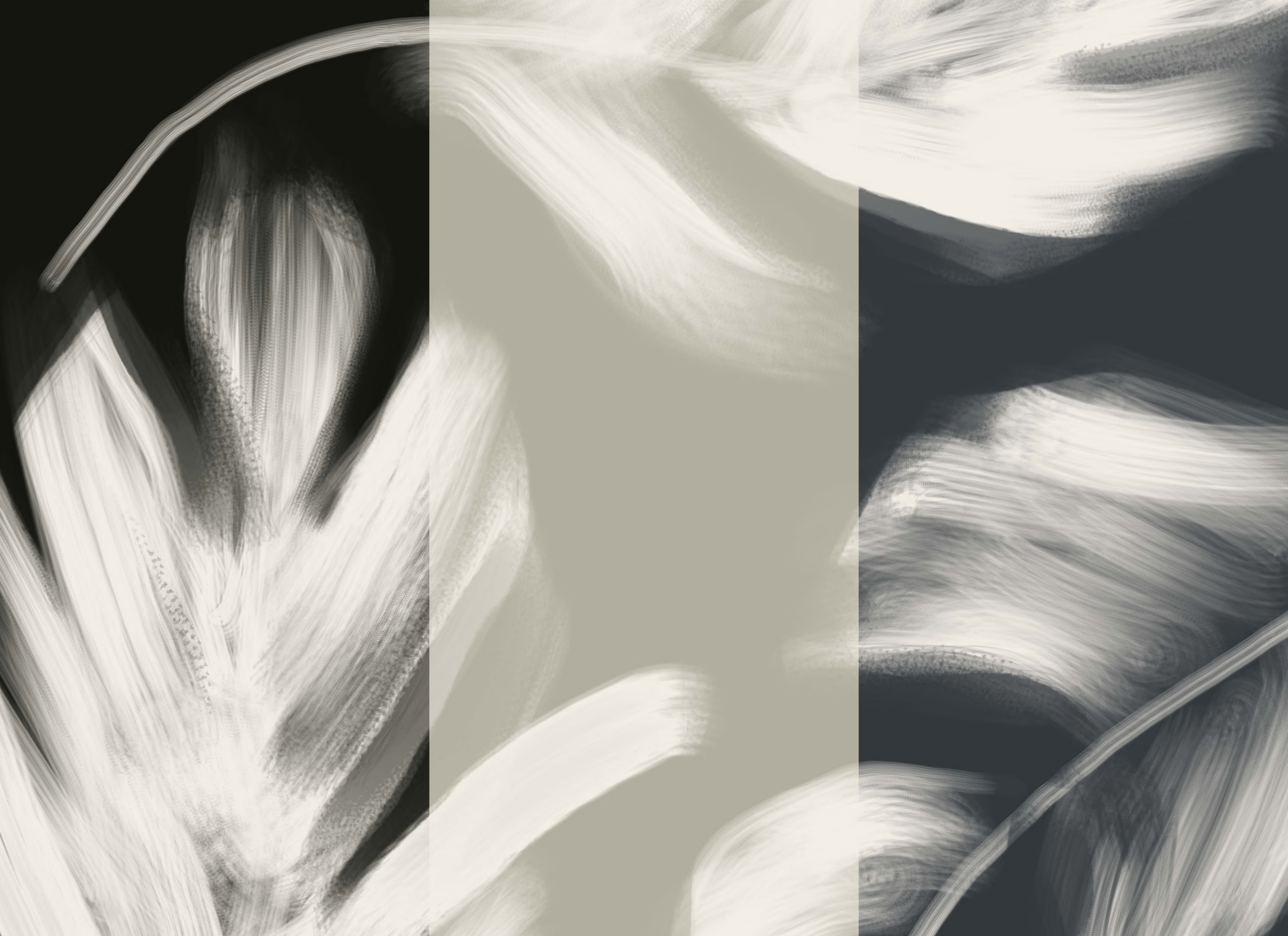
SHADOW LEAF - STUDIO LIGHT | TITAN SCALE

SHADDOOM LEAF

GRANDE SCALE: 26" repeat (2 repeats per roll width) | TITAN SCALE: 52" repeat (1 repeat per roll width)

Category V, WA-101, Type II Vinyl | Backing: Woven | Roll Width: 52 in. (132cm) | Weight: 20oz | Made in USA | Available in PVC Free, Waterproof & Microvent substrates for an extra fee | Custom colors available upon request









PETAL PRESS



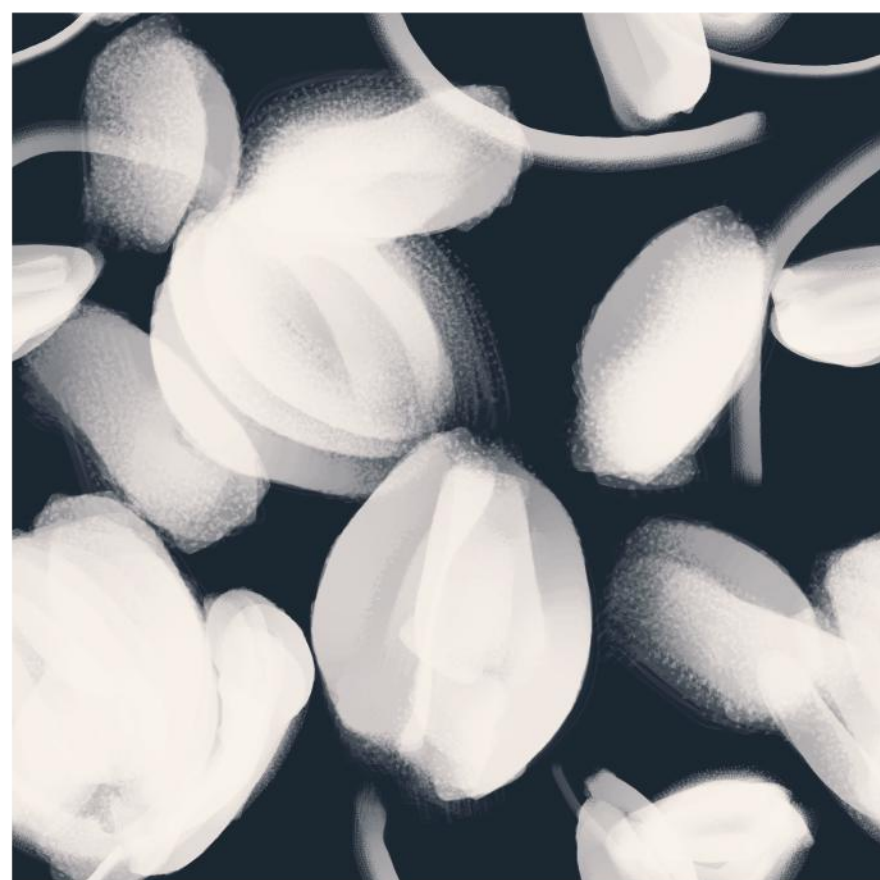
Petal Press explores florals through a bold, modern lens—oversized petals layered with painterly depth and soft-edged movement. The artwork feels intentional yet organic, creating a sense of flow that reads as both graphic and atmospheric across the wall. Designed to feel expressive without becoming busy, Petal Press balances scale and restraint beautifully. Printed on a 52" wide roll, the pattern is offered in two repeat scale options—26" and 52"—giving designers flexibility to control the rhythm and visual impact depending on the space. The result is a wallcovering that feels confident, immersive, and effortlessly elevated. From hospitality suites and boutique hotels to statement corridors and residential feature walls, Petal Press creates a layered backdrop that feels curated, calm, and quietly powerful. Available in 12 standard colorways, ranging from high-contrast neutrals to warm, tonal hues. Custom colorways are also available, allowing designers to tailor the palette to brand standards, material selections, or project-specific storytelling.

52"



GRANDE

52"



TITAN

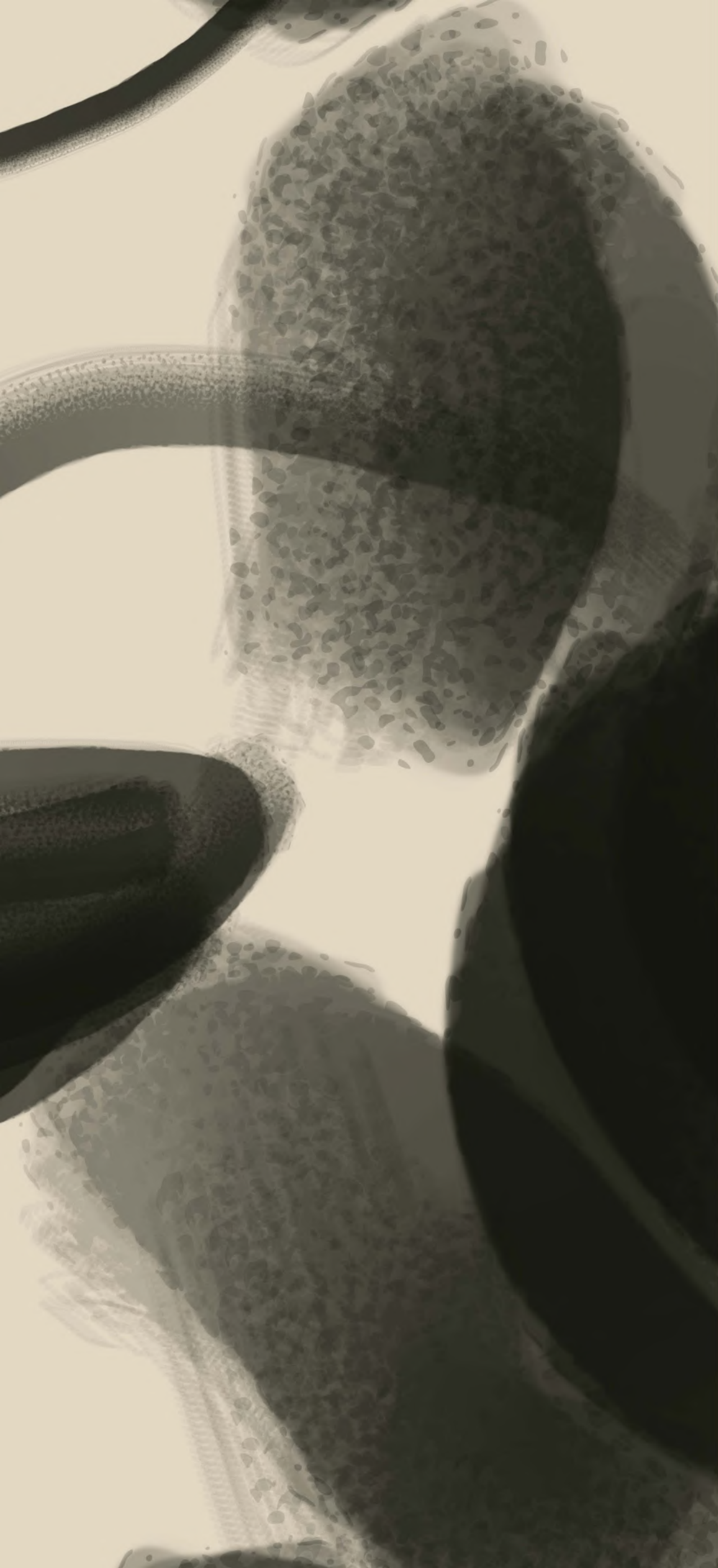


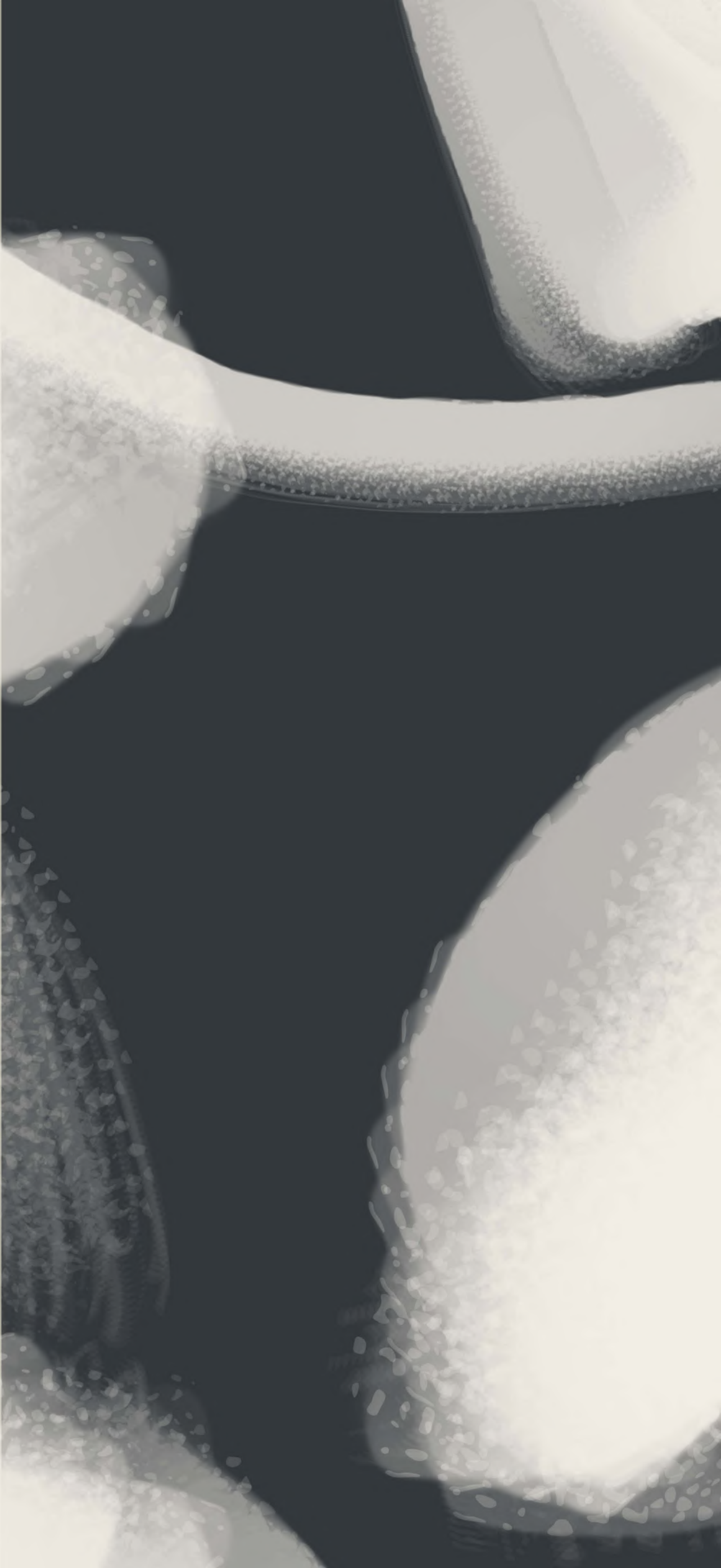
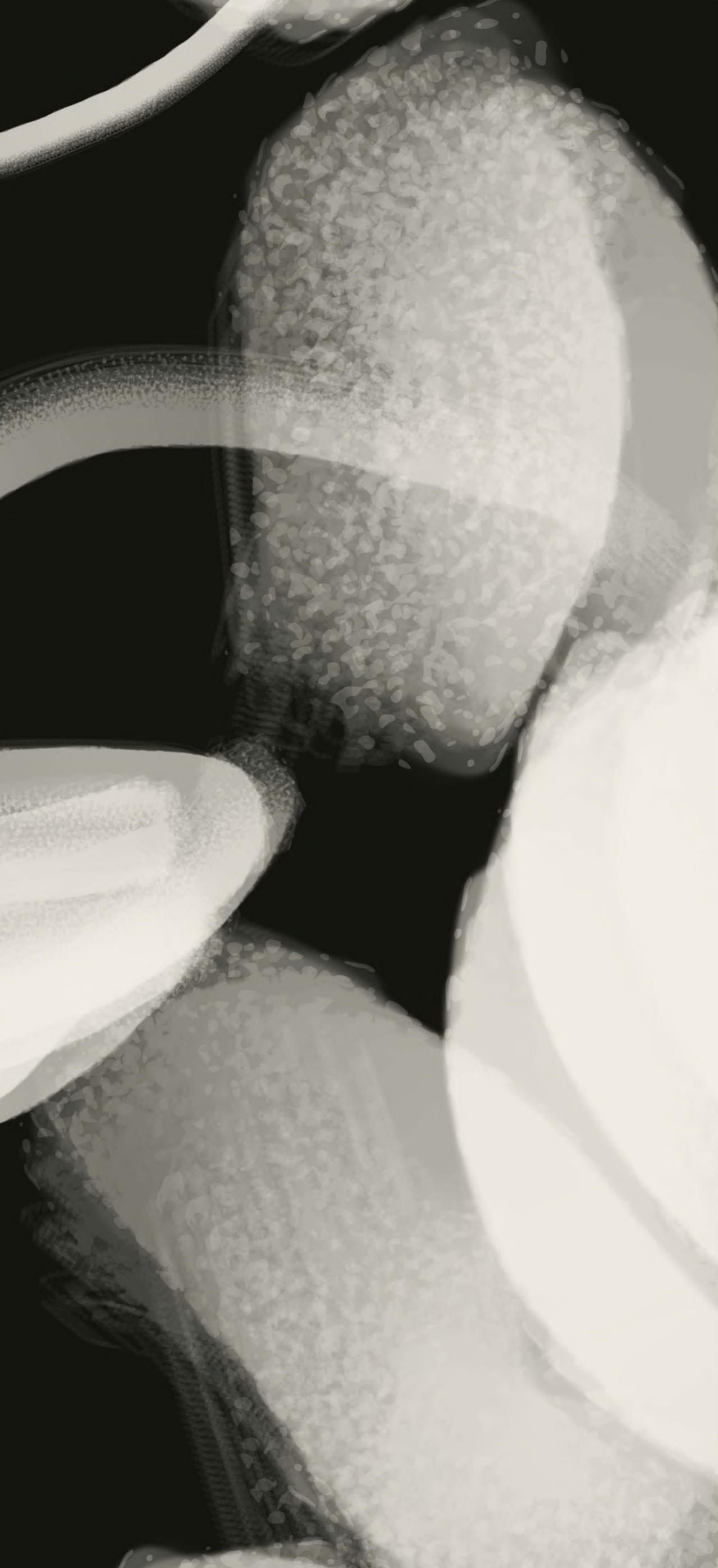
PETAL PRESS - BLEACHED DENIM | TITAN SCALE

PETAL PRESS

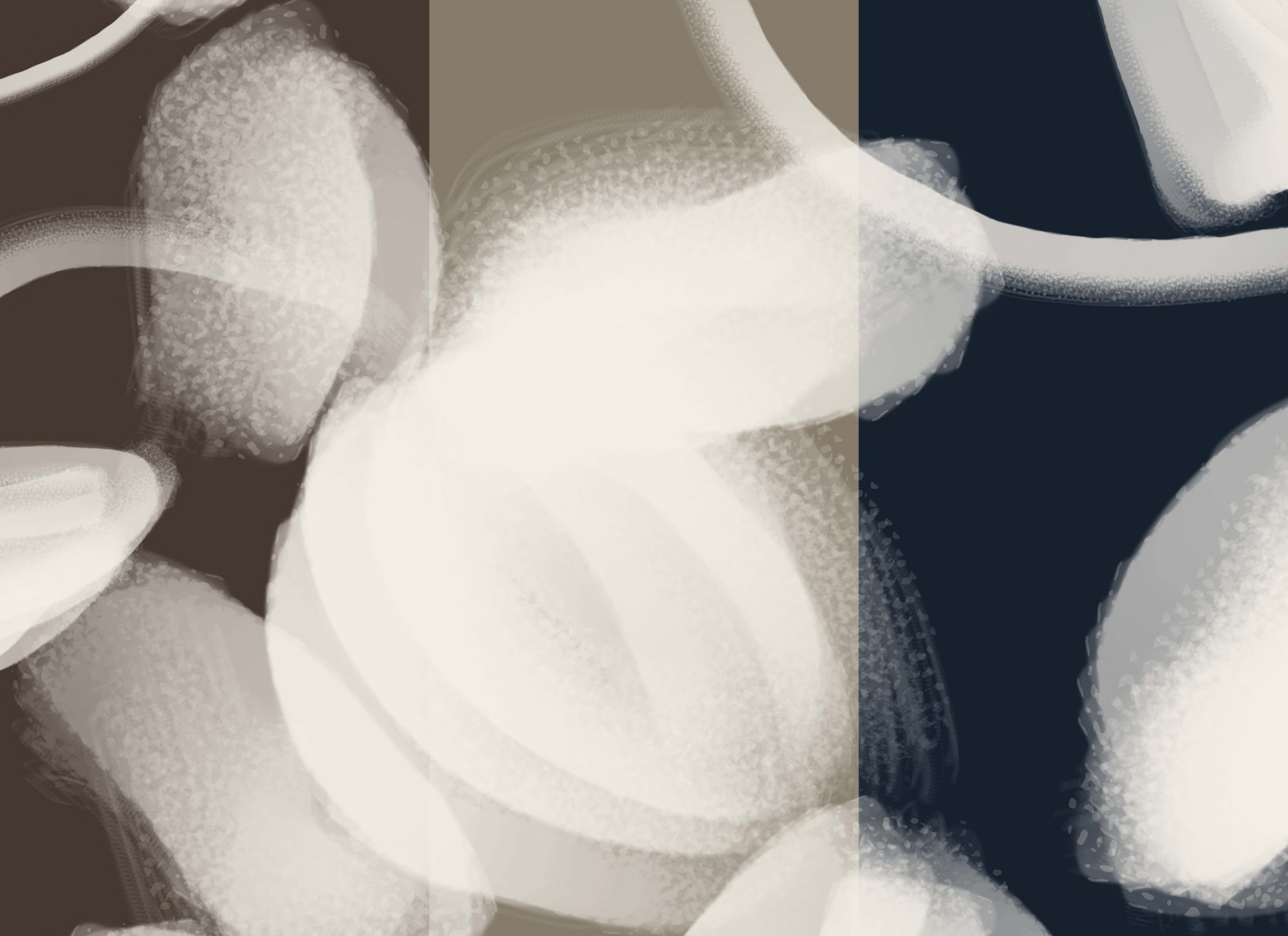
GRANDE SCALE: 26" repeat (2 repeats per roll width) | TITAN SCALE: 52" repeat (1 repeat per roll width)

Category V, WA-101, Type II Vinyl | Backing: Woven | Roll Width: 52 in. (132cm) | Weight: 20oz | Made in USA | Available in PVC Free, Waterproof & Microvent substrates for an extra fee | Custom colors available upon request









OVERLINE



Bold brushwork meets graphic rhythm in Overline, a modern statement pattern defined by sweeping, hand-painted strokes layered into an architectural repeat. The composition feels expressive yet controlled—artful movement balanced by a strong linear cadence that gives walls presence without overwhelm. Designed to read beautifully from near and far, Overline delivers visual depth through soft translucency, painterly overlap, and a sense of intentional repetition. The pattern shines in hospitality settings—restaurants, lounges, boutique hotels—as well as elevated residential spaces where texture and scale do the heavy lifting. Printed on a 52" wide roll, Overline is offered in two repeat scale options to suit the space and the statement; Grande – 26" repeat for more intimate rooms or refined feature walls and Titan – 52" repeat for expansive lobbies, corridors, and high-impact installations. The generous width minimizes seams and enhances pattern flow, while the dual-scale flexibility allows designers to dial the drama up or down with confidence. Available in a curated palette ranging from soft neutrals to rich, saturated tones, Overline is modern artistry—tailored for commercial performance and unmistakably Runway.

52"



GRANDE

52"



TITAN



OVERLINE - IVORY MUSE | GRANDE SCALE

OVERLINE

GRANDE SCALE: 26" repeat (2 repeats per roll width) | TITAN SCALE: 52" repeat (1 repeat per roll width)

Category V, WA-101, Type II Vinyl | Backing: Woven | Roll Width: 52 in. (132cm) | Weight: 20oz | Made in USA | Available in PVC Free, Waterproof & Microvent substrates for an extra fee | Custom colors available upon request







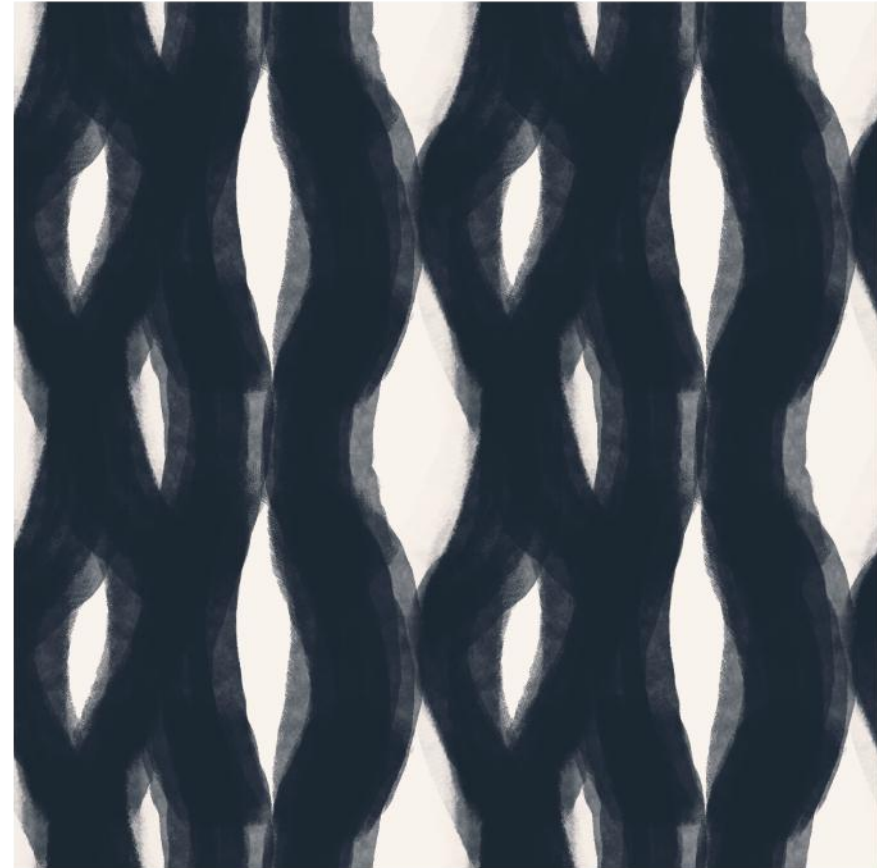


VEILED



Veiled is a study in movement and mystery—soft, elongated forms overlap and drift, creating a rhythmic pattern that feels both organic and architectural. The design evokes sheer layers and shadow play, with painterly strokes that blur and dissolve as they move across the wall. Inspired by flowing textiles and abstract ink washes, Veiled brings a sense of depth and quiet drama to interior spaces. Printed on a 52" wide roll, the pattern is available in two repeat scale options—26" and 52"—allowing designers to control the visual cadence from refined and intimate to bold and immersive. From hospitality lounges and guestrooms to statement residential interiors, Veiled reads as an expressive neutral—grounding a space while adding softness, movement, and visual intrigue. From a distance it feels calm and cohesive; up close, the layered brushwork reveals its artistic complexity. Available in 12 standard colorways, ranging from soft, airy neutrals to deep, moody contrasts. Custom colorways are also available, offering flexibility to align with brand palettes, architectural finishes, or project-specific visions.

52"



GRANDE

52"



TITAN



VEILED - MIDNIGHT EDIT | TITAN SCALE

VEILED

GRANDE SCALE: 26" repeat (2 repeats per roll width) | TITIAN SCALE: 52" repeat (1 repeat per roll width)

Category V, WA-101, Type II Vinyl | Backing: Woven | Roll Width: 52 in. (132cm) | Weight: 20oz | Made in USA | Available in PVC Free, Waterproof & Microvent substrates for an extra fee | Custom colors available upon request









PLAID UNDONE



Plaid Undone reimagines a classic through an artistic lens—softened, blurred, and intentionally disrupted. Layered brushstrokes intersect and dissolve, creating a pattern that hints at structure while embracing movement. The result feels familiar yet unexpected, graphic yet atmospheric. Inspired by textiles and abstract mark-making, Plaid Undone brings depth without rigidity. Printed on a 52" wide roll, the design is available in two repeat scale options—26" and 52"—allowing designers to dial the pattern from subtle and textural to bold and immersive depending on the space. Ideal for hospitality interiors, lounges, guestrooms, corridors, and contemporary residential environments, Plaid Undone reads as a modern neutral from afar and reveals its artistic complexity up close—making it endlessly versatile and design-forward. Available in 12 standard colorways, from high-contrast statements to warm, tonal foundations. Custom colorways are also available, offering flexibility to align with brand palettes, architectural finishes, or project-specific color stories.

52"



GRANDE

52"



TITAN



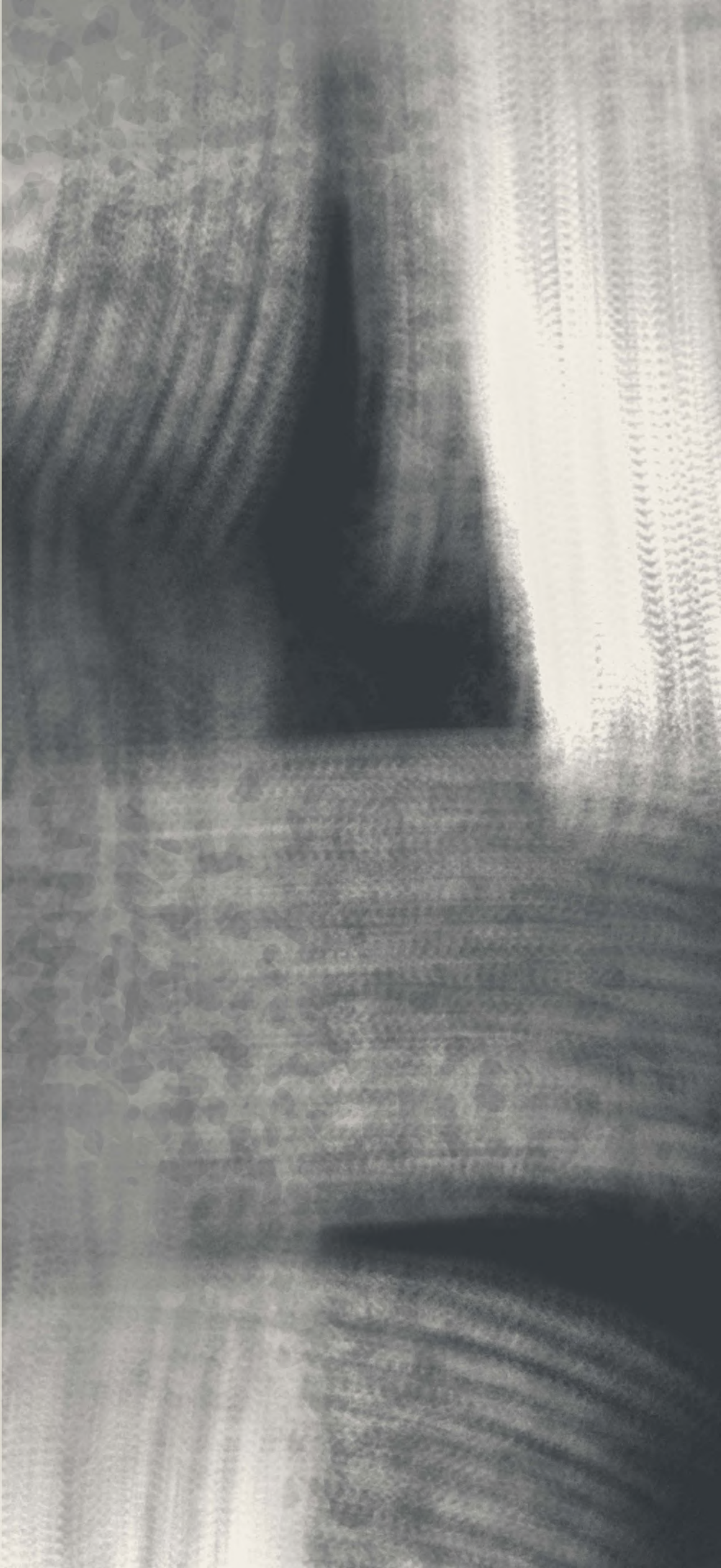
PLAID UNDONE - WILLOW | TITAN SCALE

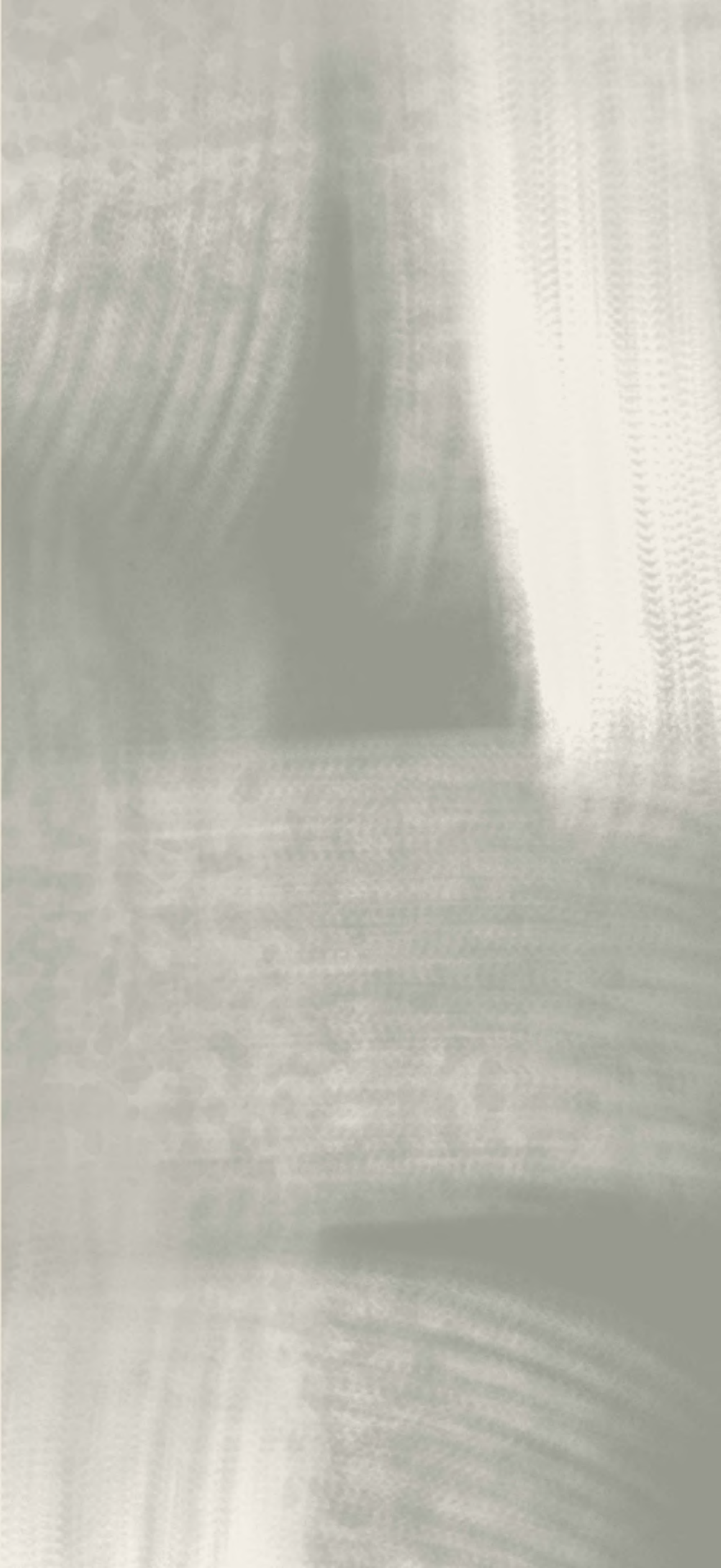
PLAID UNDONE

GRANDE SCALE: 26" repeat (2 repeats per roll width) | TITAN SCALE: 52" repeat (1 repeat per roll width)

Category V, WA-101, Type II Vinyl | Backing: Woven | Roll Width: 52 in. (132cm) | Weight: 20oz | Made in USA | Available in PVC Free, Waterproof & Microvent substrates for an extra fee | Custom colors available upon request







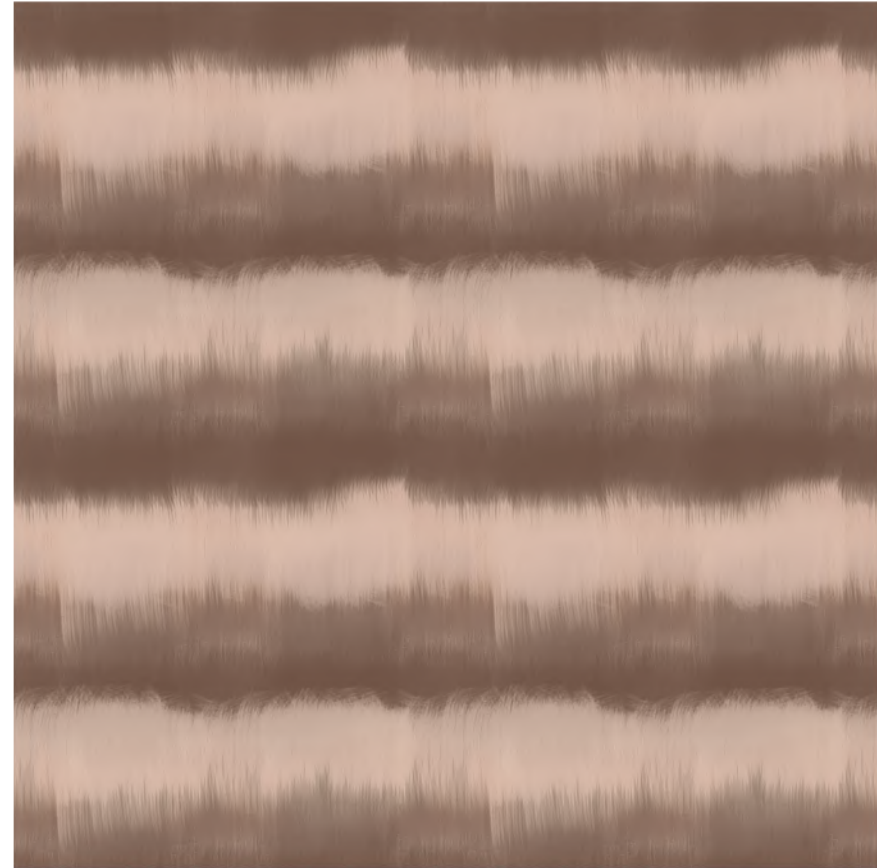


IKAT MIRAGE



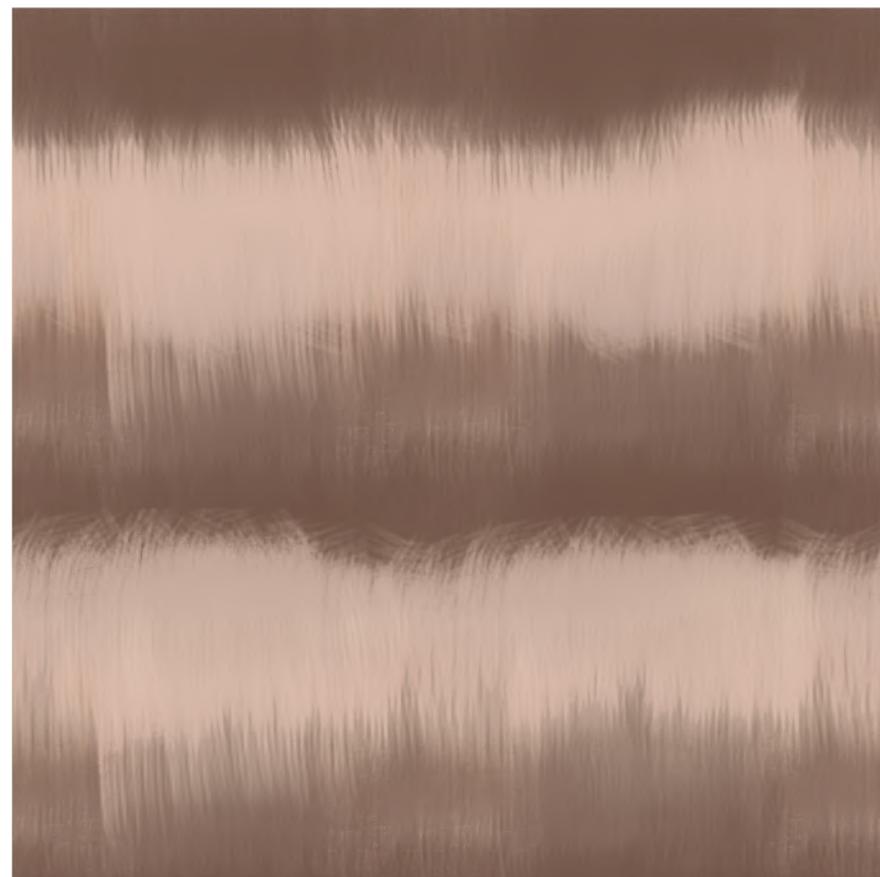
Ikat Mirage is a modern interpretation of a timeless textile—softened, blurred, and reimagined through an editorial lens. Horizontal bands of feathered texture ebb and flow across the surface, creating a sense of movement that feels calm, layered, and quietly immersive. Inspired by traditional ikat weaving and painterly mark-making, Ikat Mirage delivers depth without definition, allowing the pattern to read as a textured neutral from a distance while revealing nuanced detail up close. Printed on a 52" wide roll, the design is offered in two repeat scale options—26" and 52"—giving designers flexibility to scale the pattern for intimate spaces or expansive installations. Ideal for hospitality interiors, wellness spaces, corridors, lounges, and elevated residential settings, Ikat Mirage brings warmth and visual softness to the wall—grounding a space without overpowering it. Available in 12 standard colorways, ranging from airy neutrals to deep, moody tones. Custom colorways are also available, allowing the design to align seamlessly with brand palettes, material selections, or project-specific narratives.

52"



GRANDE

52"



TITAN

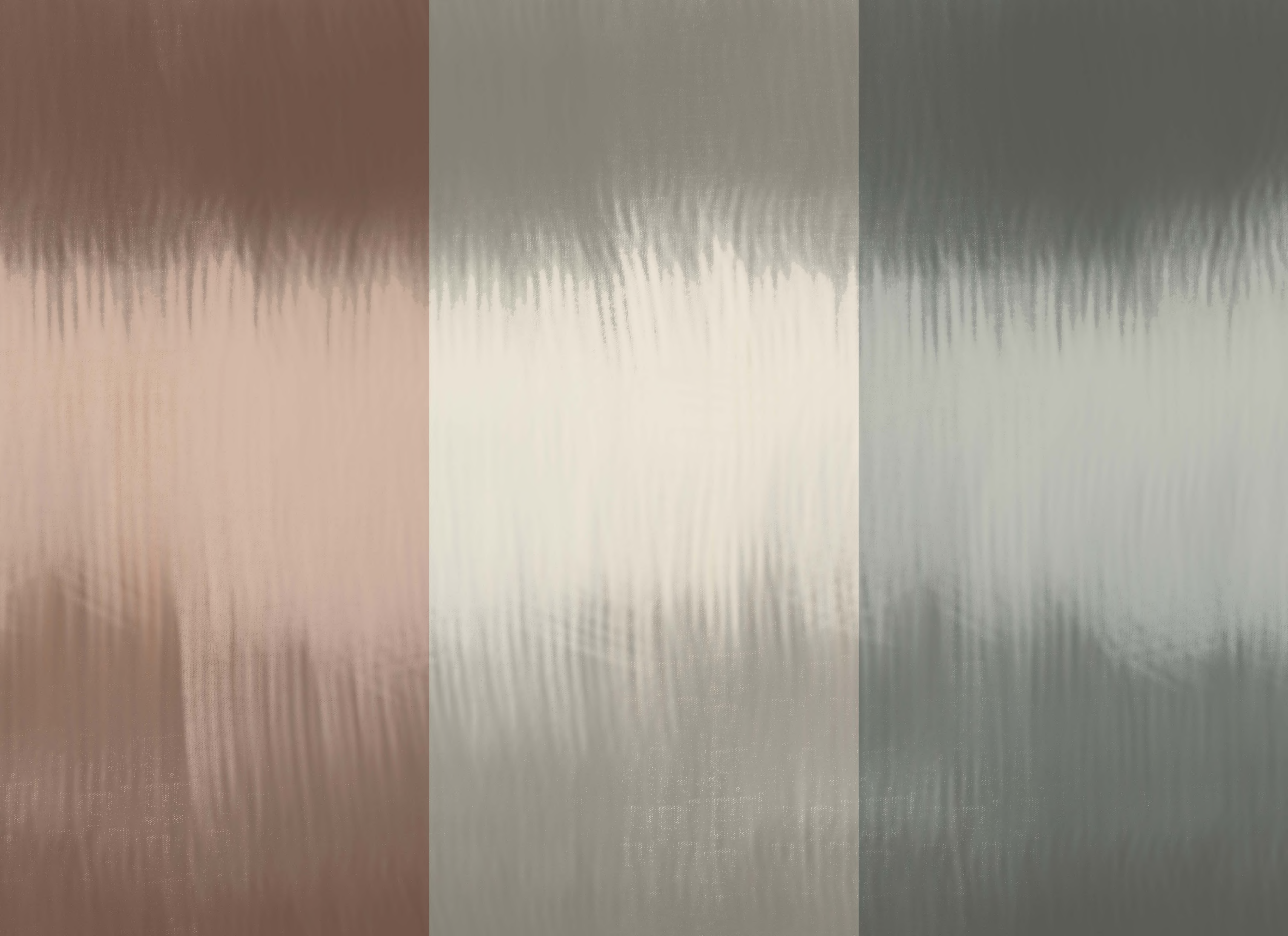


IKAT MIRAGE - STUDIO BLUSH | TITAN SCALE

IKAT MIRAGE

GRANDE SCALE: 26" repeat (2 repeats per roll width) | TITAN SCALE: 52" repeat (1 repeat per roll width)

Category V, WA-101, Type II Vinyl | Backing: Woven | Roll Width: 52 in. (132cm) | Weight: 20oz | Made in USA | Available in PVC Free, Waterproof & Microvent substrates for an extra fee | Custom colors available upon request





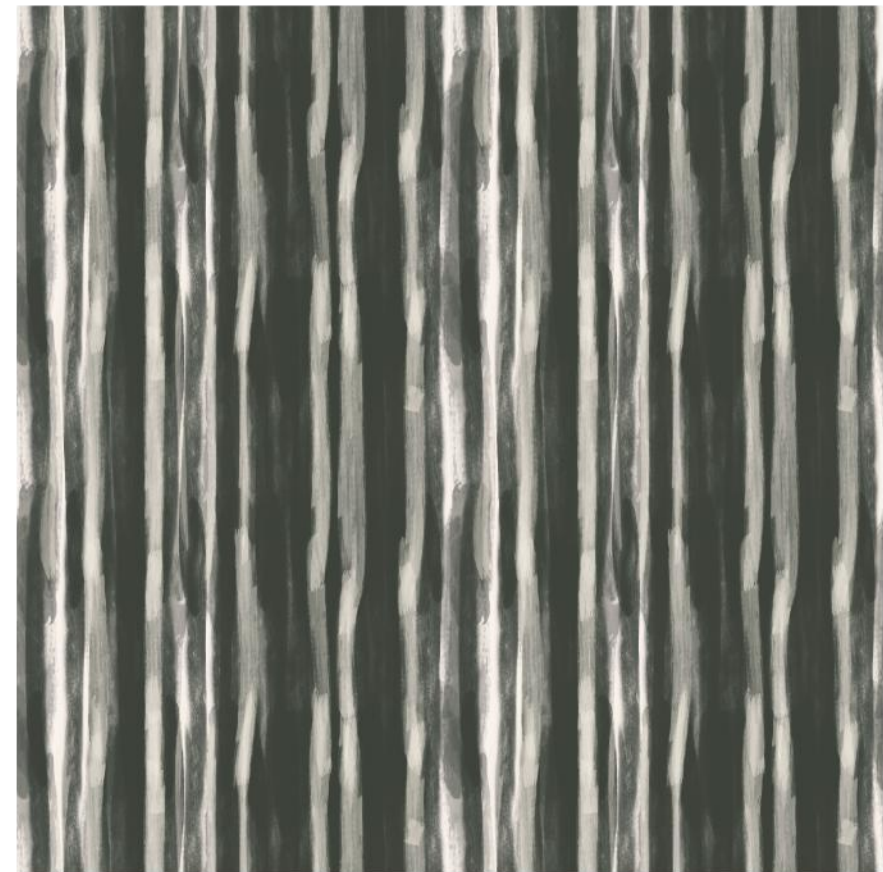


ETHNIC GRAIN



Ethnic Grain is a study in texture and tradition—vertical strokes layered with irregular movement evoke hand-carved wood, woven fibers, and time-worn craft. The pattern feels organic and architectural all at once, with painterly striations that bring depth, warmth, and rhythm to the wall. Inspired by global textiles and natural materials, Ethnic Grain offers structure without rigidity. Printed on a 52" wide roll, the design is available in two repeat scale options—26" and 52"—allowing designers to adjust the visual cadence from subtle and refined to bold and immersive. Ideal for hospitality spaces, boutique retail, corridors, wellness environments, and elevated residential interiors, Ethnic Grain reads as a sophisticated neutral from afar while revealing its artisanal character up close. The vertical movement naturally elongates walls, adding quiet drama without overpowering the space. Available in 12 standard colorways, ranging from soft, earthy neutrals to high-contrast, moody statements. Custom colorways are also available, offering flexibility to align with brand palettes, material stories, or project-specific design intent.

52"



GRANDE

52"



TITAN



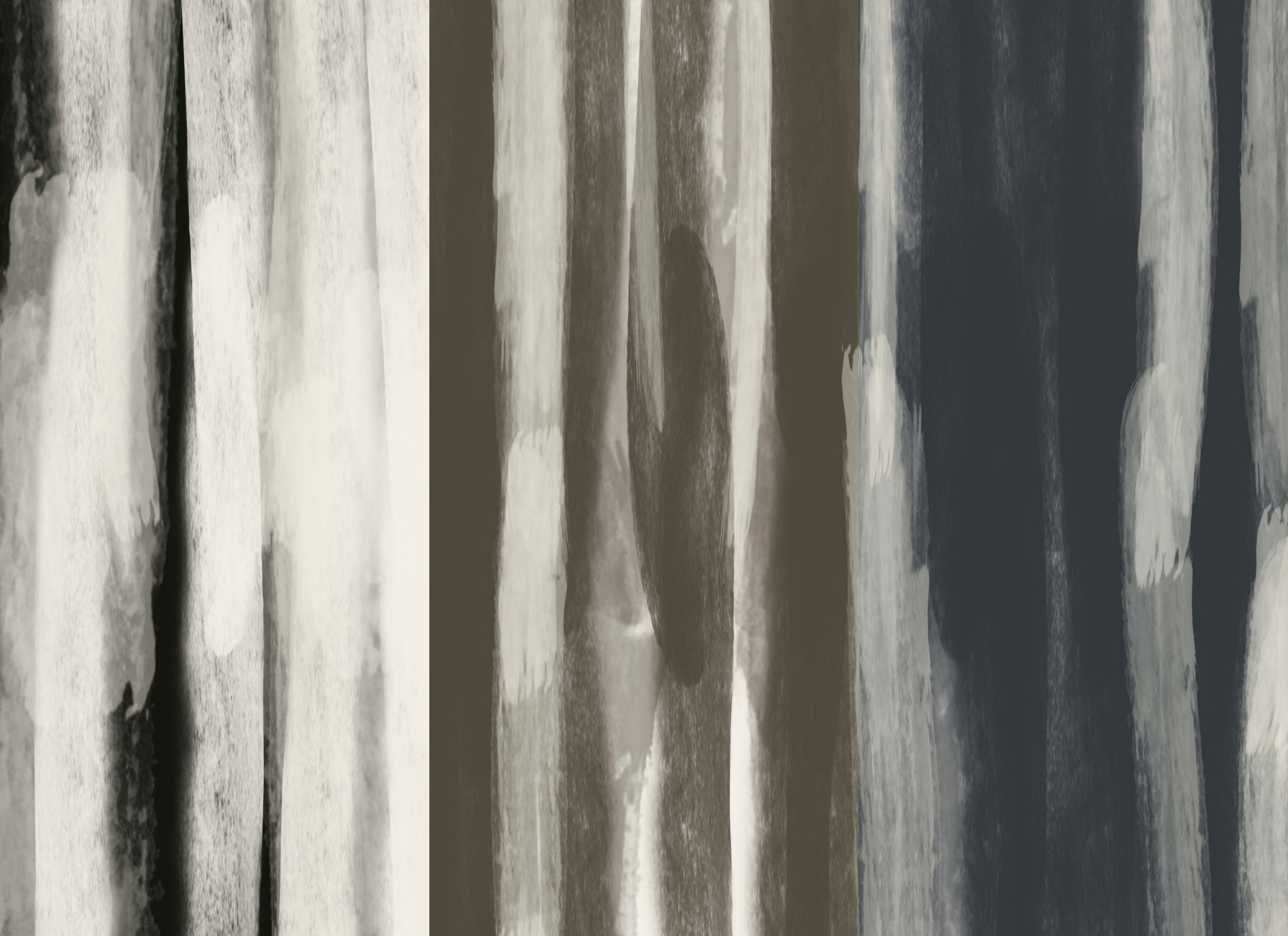
ETHNIC GRAIN - SILK FIR | TITAN SCALE

ETHNIC GRAIN

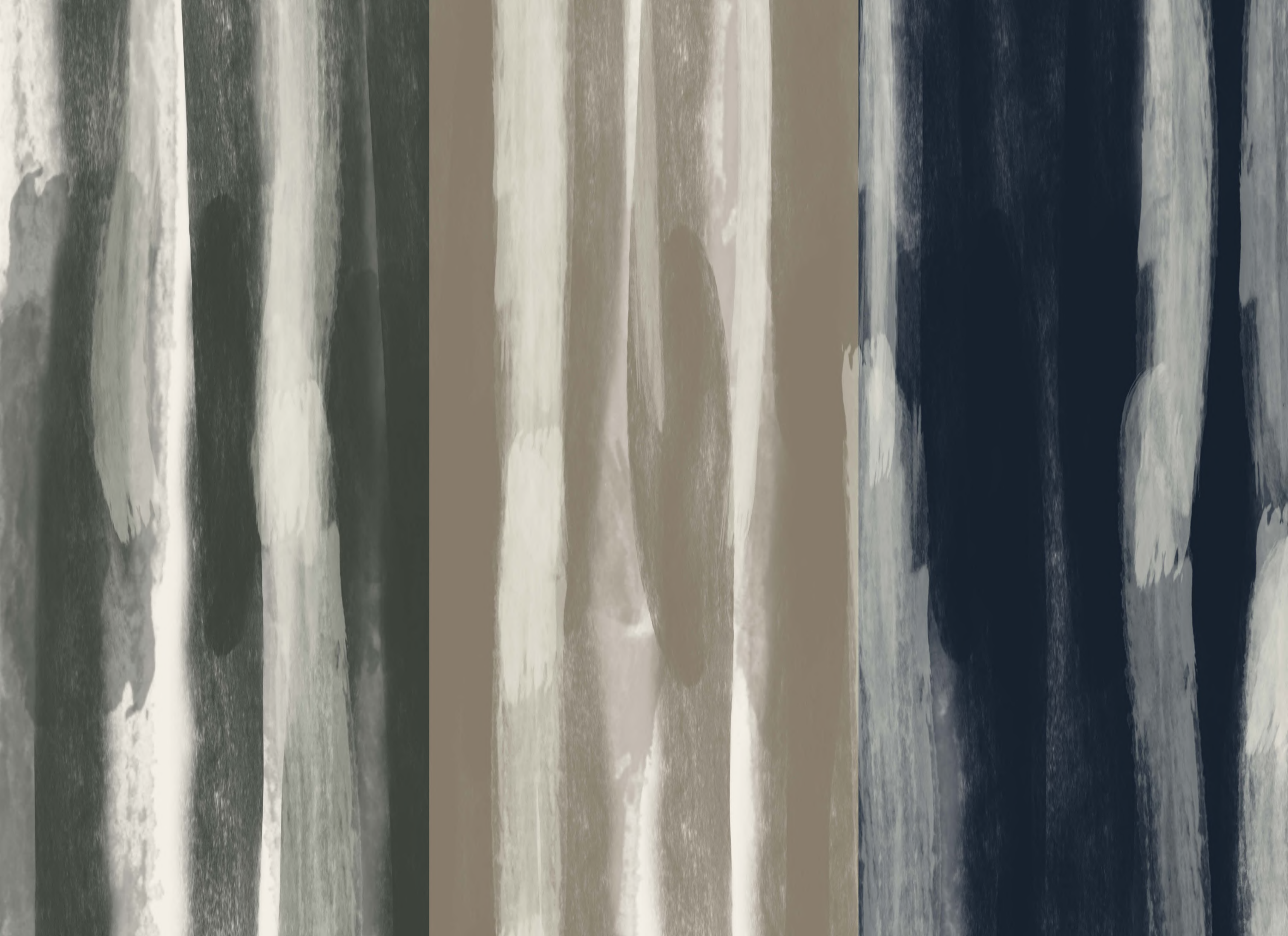
GRANDE SCALE: 26" repeat (2 repeats per roll width) | TITAN SCALE: 52" repeat (1 repeat per roll width)

Category V, WA-101, Type II Vinyl | Backing: Woven | Roll Width: 52 in. (132cm) | Weight: 20oz | Made in USA | Available in PVC Free, Waterproof & Microvent substrates for an extra fee | Custom colors available upon request

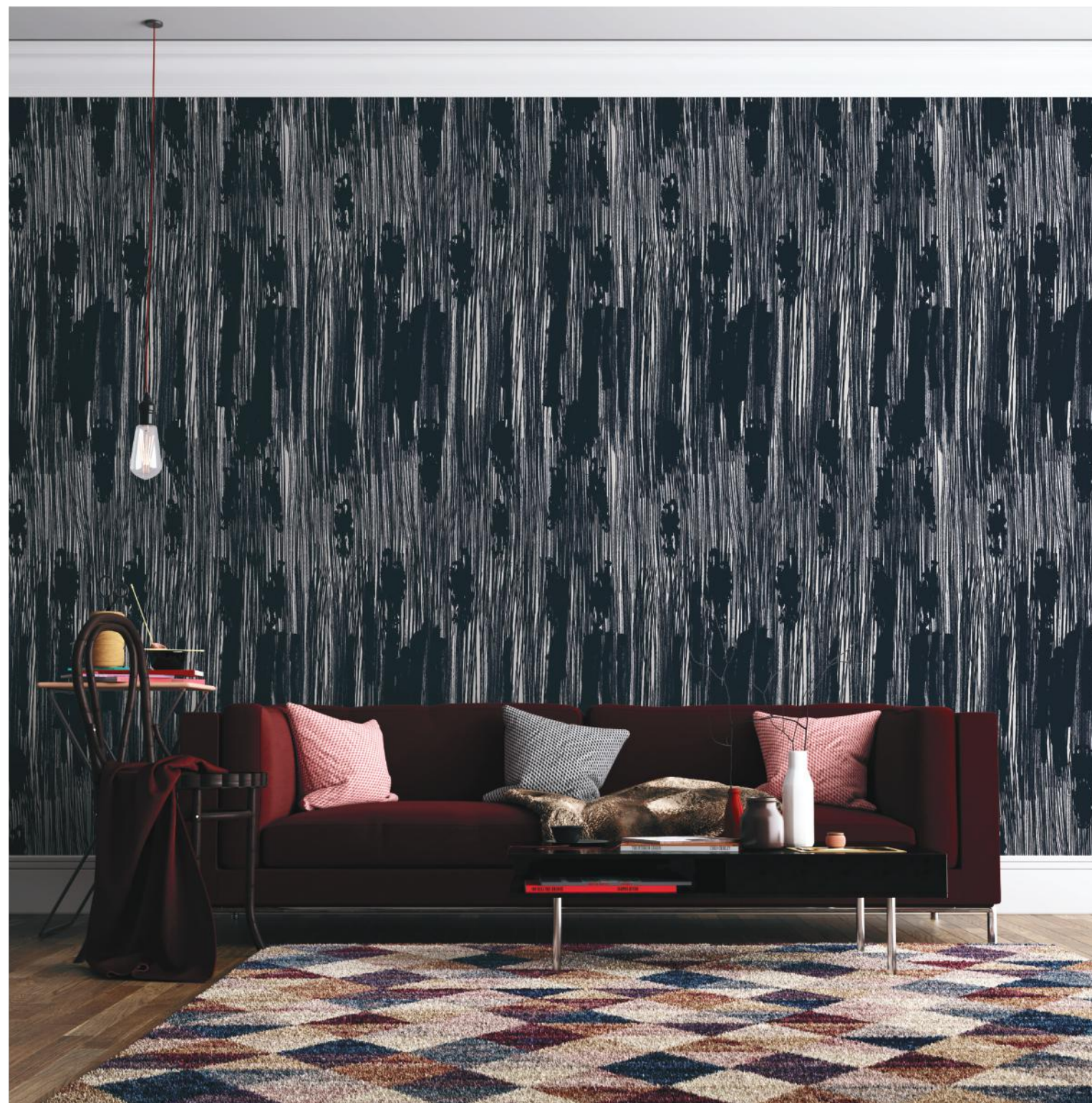






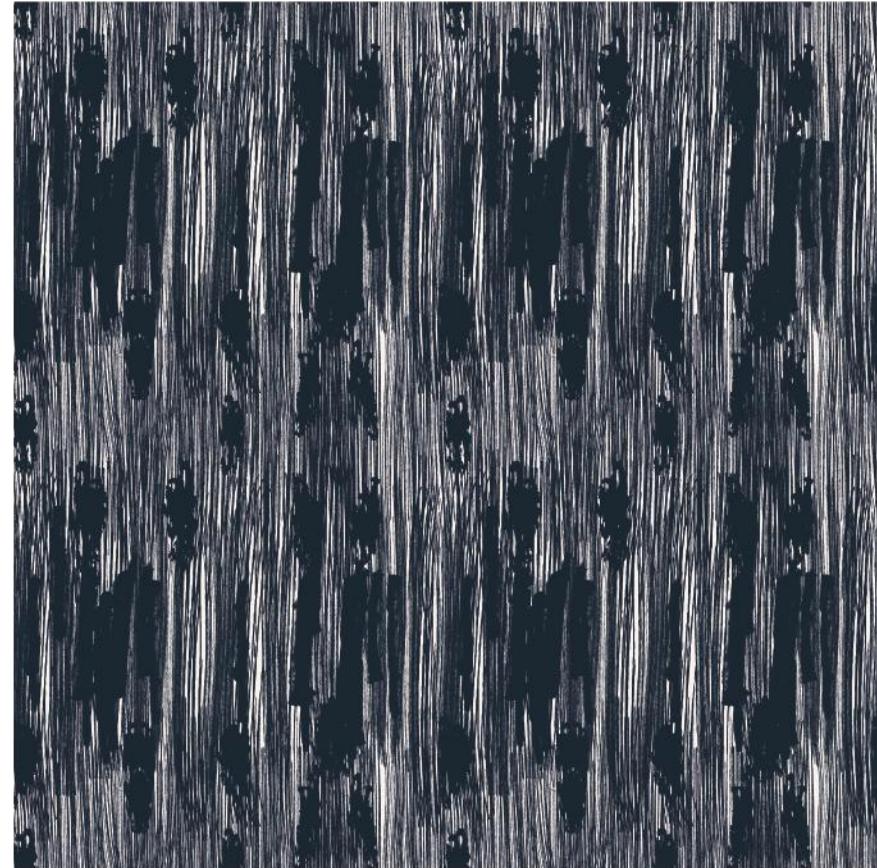


INKFALL



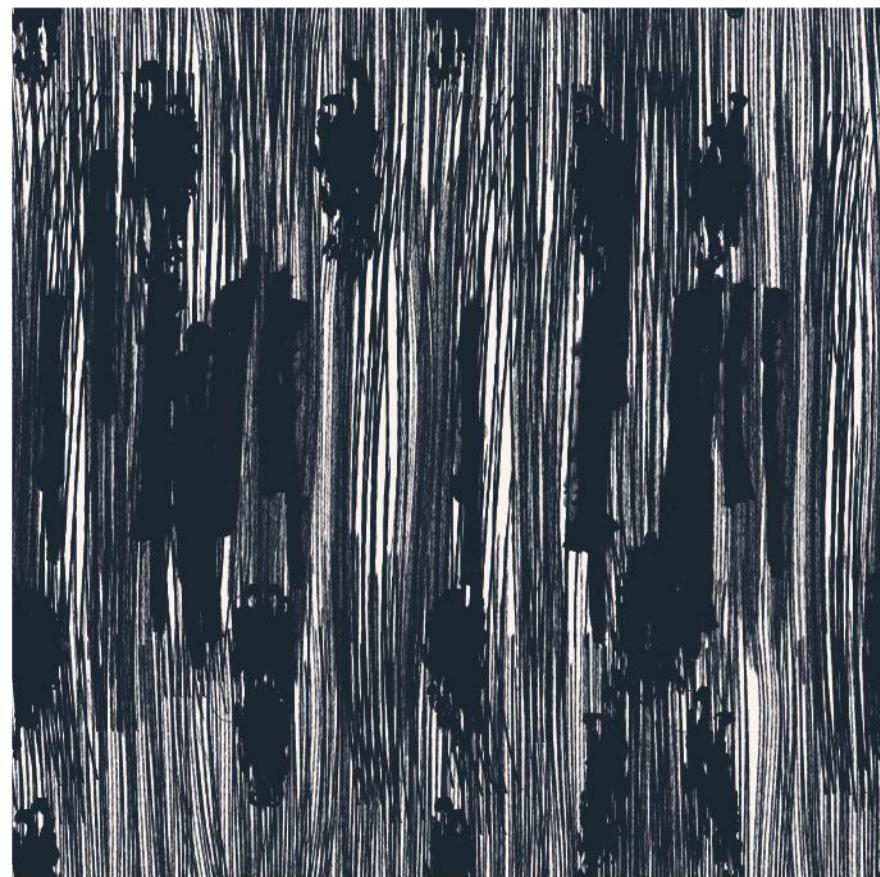
Inkfall captures the raw beauty of motion—like rain-soaked ink pulled straight down the page. Vertical striations layer light and shadow, creating depth that feels organic, moody, and effortlessly sophisticated. The result is a pattern that reads painterly up close and architectural from a distance. Designed to elevate commercial interiors, Inkfall brings rhythm and texture to hotel corridors, statement lobbies, boutique retail, and intimate hospitality spaces. Its vertical flow subtly elongates walls, adding drama without overpowering the room—perfect for designers who want impact with restraint. Available in a refined palette ranging from deep, inky contrasts to softened neutrals, Inkfall plays beautifully with natural materials, sculptural furnishings, and warm metals.

52"



GRANDE

52"



TITAN



INKFALL

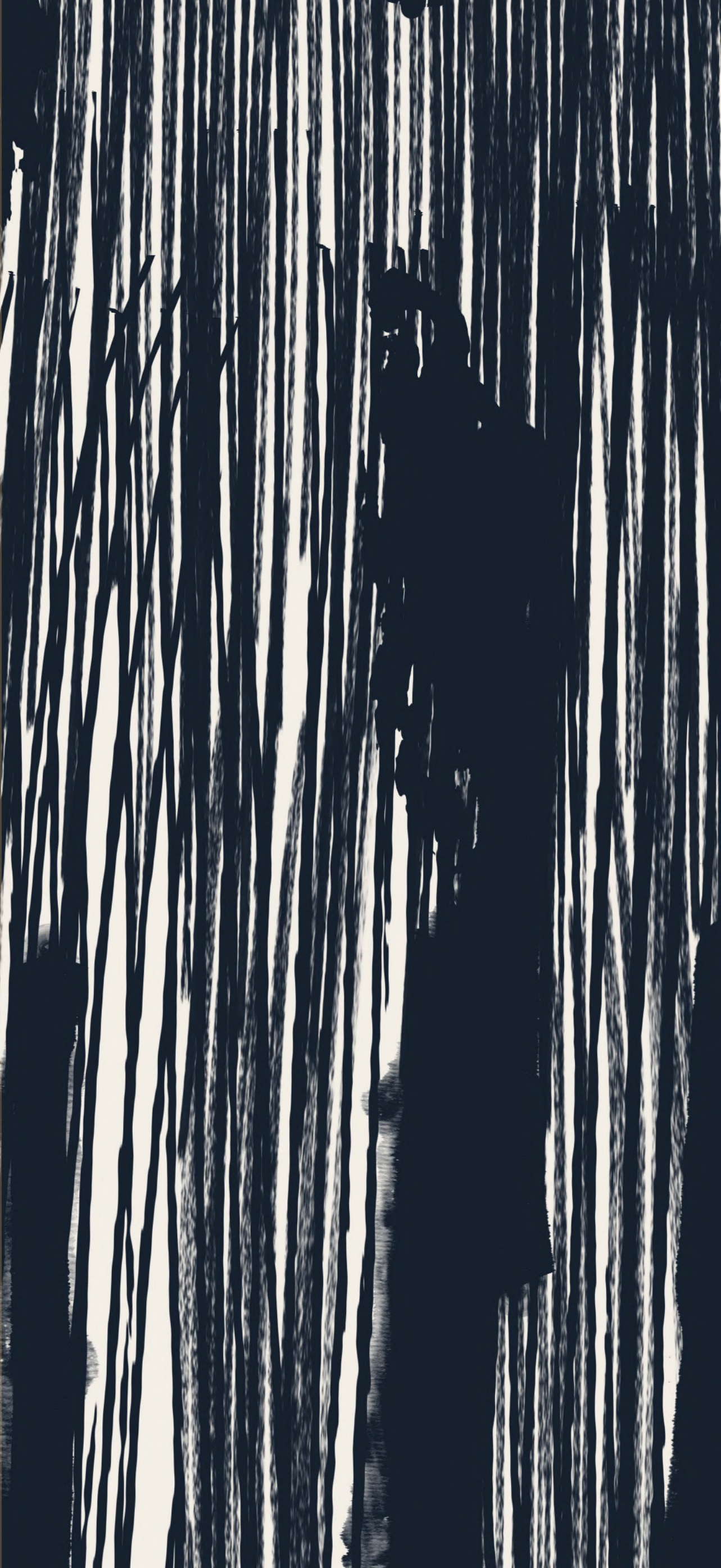
GRANDE SCALE: 26" repeat (2 repeats per roll width) | TITAN SCALE: 52" repeat (1 repeat per roll width)

Category V, WA-101, Type II Vinyl | Backing: Woven | Roll Width: 52 in. (132cm) | Weight: 20oz | Made in USA | Available in PVC Free, Waterproof & Microvent substrates for an extra fee | Custom colors available upon request









STATIC



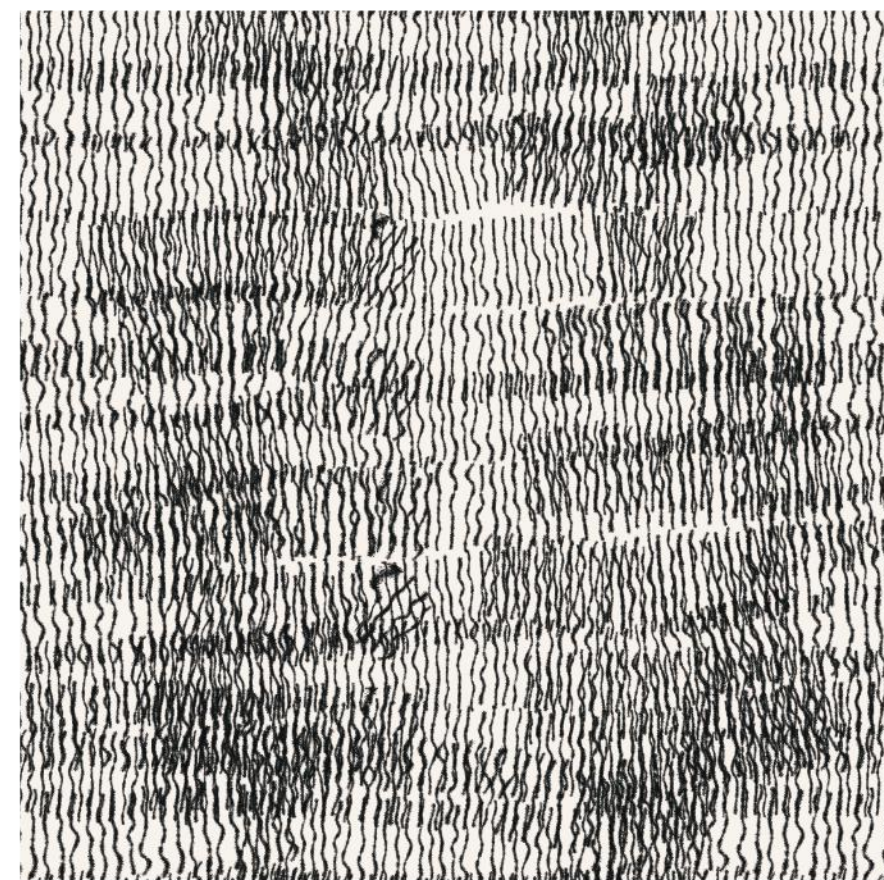
Static is a study in texture and rhythm—layered vertical linework that feels woven, etched, and softly disrupted. The pattern captures movement without motion, creating depth through repetition and variation for a look that is grounded, modern, and quietly compelling. Inspired by textile structures and hand-drawn mark making, Static brings a tactile quality to the wall while remaining visually restrained. Printed on a 52" wide roll, the design is available in two repeat scale options—26" and 52"—allowing designers to control the density and scale depending on the space and desired impact. Ideal for hospitality interiors, corridors, guestrooms, and contemporary residential spaces, Static reads as a refined neutral from a distance and reveals its layered complexity up close—making it endlessly versatile and easy to live with. Available in 12 standard colorways, ranging from high-contrast statements to soft, tonal foundations. Custom colorways are also available, offering flexibility to align with brand palettes, architectural finishes, or project-specific design narratives.

52"



GRANDE

52"



TITAN



STATIC - TUXEDO | TITAN SCALE

STATIC

GRANDE SCALE: 26" repeat (2 repeats per roll width) | TITAN SCALE: 52" repeat (1 repeat per roll width)

Category V, WA-101, Type II Vinyl | Backing: Woven | Roll Width: 52 in. (132cm) | Weight: 20oz | Made in USA | Available in PVC Free, Waterproof & Microvent substrates for an extra fee | Custom colors available upon request



