



**Brandeis**

TRAVELERS

AUGUST 10-15, 2025

Featuring Faculty Leader  
Sally Warner

# DISCOVER DENALI NATIONAL PARK

A JOURNEY INTO THE SCENIC WILDS  
OF AMERICA'S NORTHERNMOST STATE

Orbridge

# Denali National Park | Itinerary and Highlights *(subject to change)*

**Day 1: ARRIVE IN FAIRBANKS, AK** Welcome to Fairbanks—known as “The Golden Heart of Alaska.” Meet your Orbridge Expedition Leader and fellow travel companions at a welcome dinner, and prepare for your upcoming Denali activities and excursions.  
Overnight: Pike’s Waterfront Lodge (D)

**Day 2: FAIRBANKS | ALASKA RAILROAD | DENALI NATIONAL PARK** With your Orbridge Expedition Leader, board the train to Denali National Park, traversing one of the most scenic stretches of the world-famous Alaska Railroad. Enjoy a rich panoply of views of America’s northernmost frontier as you travel in the upgraded glass-dome train car. Delight in breakfast aboard the train before arriving in Denali. Upon arriving at the park, take a short walk with your Expedition Leader to the Denali National Park Visitor Center for a brief orientation. Afterward take the courtesy shuttle to the Grande Denali Lodge. This evening enjoy a lively dinner where you’ll explore fun and unique features of the park with a presenter from the Murie Science and Learning Center.  
Overnight: Grande Denali Lodge (B,D)

**Day 3: DENALI NATIONAL PARK WILDERNESS EXCURSION**  
Today travel along the Denali National Park Road on a naturalist-guided, back-country adventure for incredible scenery and some of the best opportunities to view the majestic Mount Denali. Redeem your Alpenglowl Restaurant dinner voucher either tonight or tomorrow evening.  
Overnight: Grande Denali Lodge (B,L,D)

**Day 4: DENALI NATIONAL PARK** After breakfast participate in one of the pre-purchased optional excursions or enjoy free time to explore Denali. Later reconvene for wine and dessert as you listen to Alaskan homesteader, Jimmie Hendricks, as he relives his journey and lifelong dream to explore Alaska and make it his home.  
Overnight: Grande Denali Lodge (B,R)

**Day 5: DENALI NATIONAL PARK | TALKEETNA | ANCHORAGE** After an early breakfast journey to Anchorage by motor coach. In Talkeetna enjoy free time to explore the Talkeetna Historical Society Museum and the Walter Harper Talkeetna Ranger Station to learn about mountaineering operations, the scenic Talkeetna river trail, and various shops and cafes in town. In Anchorage visit the Alaska Native Heritage Center. Later gather for a special farewell reception followed by an evening at leisure.  
Overnight: Aviator Hotel (B,R)

**Day 6: DEPART ANCHORAGE** Enjoy a leisurely morning at the hotel before taking the complimentary transfer to the airport for flights home. (B)



## Optional Excursions:

**DogGonelt Dog Sled Tour:** An intimate visit to an Alaskan frontier home to learn about the lives of the world’s greatest athletes, sled dogs, and racing the Iditarod.

**Denali Glacier Landing Flight:** A 100-minute plane tour of Denali, viewing the continent’s deepest gorge, glaciers and valleys, and land on one of Denali’s pristine glaciers.

**Arctic Circle Flight Tour:** Enjoy expansive views of the Brooks Range, Yukon River, and Trans-Alaska Pipeline on this approximately seven-hour air-and-land tour. After crossing the Arctic Circle, land in the Yukon-Koyukuk region and walk with a local resident guide as you tour one of only a few year-round, lived-in communities located this far north.

**Wilderness Wave Raft Tour:** A guided 11-mile rafting trip along the boundary of Denali National Park with panoramic views of Mount Fellows and the Nenana Canyon. Although you’ll encounter the occasional rapid, this activity is mellow enough for all ages. Actively paddle or sit back and relax.

**Canyon Wave Raft Tour:** A guided 11-mile rafting excursion through the Nenana River with spectacular views of Mount Healy and Sugarloaf Mountain. Paddle with the rafting team or sit back and enjoy the ride on the oar boat.

**Denali Wilderness ATV Tour:** Set out on your own automatic single ATV or 2-passenger side-by-side ATV. Riding along trails surrounded by Denali National Park, stop at overlooks for breathtaking 360° views of the Alaska Range. Knowledgeable guides lead you through the rugged terrain and provide opportunities for wildlife photography. Total tour covers about 10 miles with 90 minutes on the trails.

*Not all excursions listed may be available. Availability is also subject to sufficient participation, weather conditions, seasonal suitability and group interests. For flight excursions, weight and minimum age requirements apply.*

(B = Breakfast, L = Lunch, D = Dinner, R = Reception)





## What's Included

- 1 night at Pike's Waterfront Lodge in Fairbanks, 3 nights at Grande Denali Lodge and 1 night at Aviator Hotel Anchorage
- 5 breakfasts, 1 lunch, 3 dinners (including a dinner voucher for Grande Denali Lodge's Alpenglow Restaurant) and 2 receptions
- Rail transport to Denali National Park along the distinguished Alaska Railroad with reserved seating in the upper-level glass-dome car and priority seating in the dining room for breakfast and two complimentary alcoholic beverages (and unlimited non-alcoholic beverages)
- Hotel courtesy shuttle between the rail depot, Grande Denali Lodge, the Denali Park Visitor Center and town
- A full-day guided wilderness tour into Denali National Park
- Deluxe motor coach transport to Talkeetna and Anchorage
- Admission to the Alaska Native Heritage Center
- Services of an Orbridge Expedition Leader
- Gratuities for Orbridge Expedition Leader, local guides, drivers, porters, housekeeping and wait staff for included meals
- Airport transfers for guests arriving and departing during the suggested times

**Orbridge**

### Your Expedition Leader:

Enriched from the wealth of expertise provided by your

Orbridge Expedition Leader, you'll bring home a deeper understanding of the flora, fauna, natural history, and cultural narrative of the rugged Alaskan wilderness.



## Accommodations *(subject to change)*

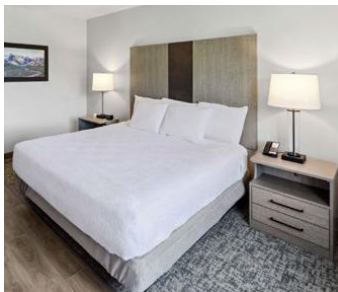
### PIKE'S WATERFRONT LODGE

Situated on the Chena River, Pike's Waterfront Lodge offers unbeatable views and warm, comfortable accommodations. Enjoy hotel amenities including an aromatherapy steam room, fitness room, restaurant, cozy lounge, ATM, 24-hour guest laundry and gift shop.



### GRANDE DENALI LODGE

The Grande Denali Lodge is located just north of the Denali National Park main entrance on the slopes of Sugarloaf Mountain with unparalleled views of the surrounding Denali wilderness and the Nenana River Canyon. Spacious guest rooms, on-site dining, and dedicated staff make the Grande Denali Lodge the perfect place to launch all your adventures. Amenities include a restaurant, a bar and lounge, convenient shuttle services, a self-service laundromat, complimentary Wi-Fi and an espresso/snacks stand.



### AVIATOR HOTEL

Enjoy the ambiance and amenities of this modern hotel, centrally located within walking distance of Anchorage's vibrant dining, shopping and cultural attractions including the Anchorage Museum. Contemporary guest rooms are tastefully designed featuring Alaskan décor and unique artistic touches crafted by local artists.



# DISCOVER DENALI NATIONAL PARK

AUGUST 10-15, 2025

Special Rate:	Special EBD Rate:	Triple EBD Rate:
<b>\$4,545*</b>	<b>\$4,295*</b>	<b>\$3,795</b>
\$5,845 Single	\$5,595 Single	\$4,045 Triple Special Rate

Rates are per person based on double occupancy except where noted as Single, in U.S. dollars.

## Reserve by Credit Card:

Phone: (866) 639-0079

Fax: (206) 452-5655

## Reserve by Check:

Made payable to **Orbridge, LLC**

Mail to: Orbridge, P.O. Box 1376

Poulsbo, WA 98370

For information related to trip insurance, please contact Meyer and Associates at (800) 635-7801.

Brandeis University is not responsible for any tour operator policies or for any refunds. Orbridge, LLC is the operator of this program and solely responsible for carrying out the responsibilities associated with it.

Additionally, Brandeis University, as a sponsor, has no financial or legal responsibility for the program. For applicable Terms & Conditions associated with your participation in this program, please see [terms.orbridge.com](https://terms.orbridge.com).

## GUEST INFORMATION:

Guest #1 Name (Title/Salutation): \_\_\_\_\_

Email: \_\_\_\_\_ Class Year: \_\_\_\_\_

Home Phone: \_\_\_\_\_ Alt. Phone: \_\_\_\_\_

Address: \_\_\_\_\_

City: \_\_\_\_\_ State: \_\_\_\_\_ Zip: \_\_\_\_\_

Guest #2 Name (Title/Salutation): \_\_\_\_\_

Email: \_\_\_\_\_ Class Year: \_\_\_\_\_

Home Phone: \_\_\_\_\_ Alt. Phone: \_\_\_\_\_

## DEPOSIT PAYMENT:

☐ Check   ☐ ACH (Automated Clearing House)   ☐ MasterCard/Visa   ☐ American Express   ☐ Discover

Card #: \_\_\_\_\_ Exp. Date: \_\_\_\_\_ CVV: \_\_\_\_\_

Name (as printed on card): \_\_\_\_\_

Billing Address (if different from above): \_\_\_\_\_

City: \_\_\_\_\_ State: \_\_\_\_\_ Zip: \_\_\_\_\_

## CATEGORY SELECTION & DEPOSIT:

# \_\_\_\_\_ guests joining program (\$850/person) = **TOTAL DEPOSIT: \$** \_\_\_\_\_

## DENALI OPTIONALS (added to your final invoice):

# \_\_\_\_\_ guests joining DogGonelt Dog Sled Tour (\$65/person; \$55/youth 12 and under)

# \_\_\_\_\_ guests joining Denali Glacier Landing Flight (\$685/person; \$635/youth 9 and under)

# \_\_\_\_\_ guests joining Arctic Circle Flight Tour (\$565/person)

# \_\_\_\_\_ guests joining Wilderness Wave Raft Tour (\$120/person; \$70/youth 5-11 years old)

# \_\_\_\_\_ guests joining Canyon Wave Raft Tour (\$120/person; \$70/youth 5-11 years old)


# \_\_\_\_\_ guests joining Denali Wilderness ATV Adventure (\$130/single-rider ATV)

# \_\_\_\_\_ guests joining Denali Wilderness ATV Adventure (\$225/2-person side-by-side ATV)

Participants' dressed weight: Guest #1 \_\_\_\_\_ Guest #2 \_\_\_\_\_ (for flights only; to balance the aircraft)

I/we have read, understand, and agree to the full Terms & Conditions at [terms.orbridge.com](https://terms.orbridge.com); and I/we agree that Orbridge, LLC is authorized to charge my credit card above and/or take my/our deposit for this program.

Signature: \_\_\_\_\_ Date: \_\_\_\_\_

 Orbridge takes seriously the responsibility to minimize our global environmental impact. Each year we plant 100,000 trees in U.S. State Forests with afforestation needs as an ongoing initiative among our evolving sustainability efforts. Learn more at [orbridge.com/going-green](https://orbridge.com/going-green).

\*Special group rate; limited offer. Airfare not included. Single availability limited. \*\*A complement to the educational component of this journey, Expedition Libraries are curated collections of useful resources and background reading tailored to this program. Place your deposit on or before the specified date, and one Expedition Library per household will be sent after receipt of final payment. Libraries may be purchased; please call for details.



Brandeis Travelers

Institutional Advancement Division  
Brandeis University, Mailstop 124  
415 South Street  
Waltham, MA 02454

AUGUST 10-15, 2025

Early Bird Discount  
rate of \$250 per person

30-DAY REFUND GUARANTEE

Reserve your space by

May 16, 2025

to receive an additional \$250  
per person off our Special Rate.\*\*

Dear Alumni and Friends,

Journey into the scenic wilds of America's most northern state, through Alaska's rugged forests and wildlife to experience the magnificent, six-million-acre Denali National Park and Preserve.

In partnership with local guides and experts, this journey will be led by Sally Warner, associate professor of climate science, who will enrich and inform the journey with on-tour lectures and informal discussions.

Familiarize yourself with the park, walking its trails with a guide, and choose from optional excursions to personalize your adventure. Keep binoculars close at hand—this dazzling and vast wilderness is home to Dall sheep, eagles, wolves, migrating caribou, and grizzly bears—and catching sight of them is a thrill not soon forgotten.

A final highlight of this adventure includes an afternoon traveling aboard the historic Alaska Railroad with superior viewing from your upgraded GoldStar glass-dome seat.

Join us on this summertime expedition as we explore the highest mountain peak in North America.

We look forward to welcoming you aboard this spectacular tour. Reserve your space today by calling Orbridge at (866) 639-0079.

Sincerely,



F. Patricia Fisher  
Vice President, Alumni Relations  
Brandeis University

PRSRT STD  
U.S. POSTAGE

PAID

PERMIT NO. 825  
SAN DIEGO, CA