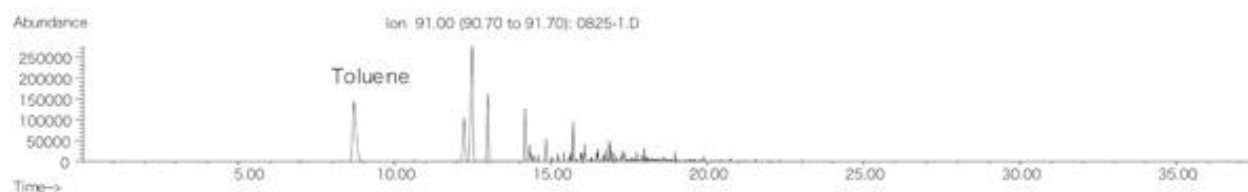
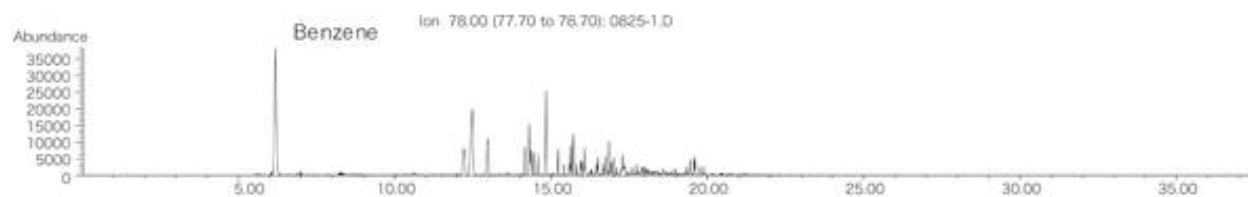
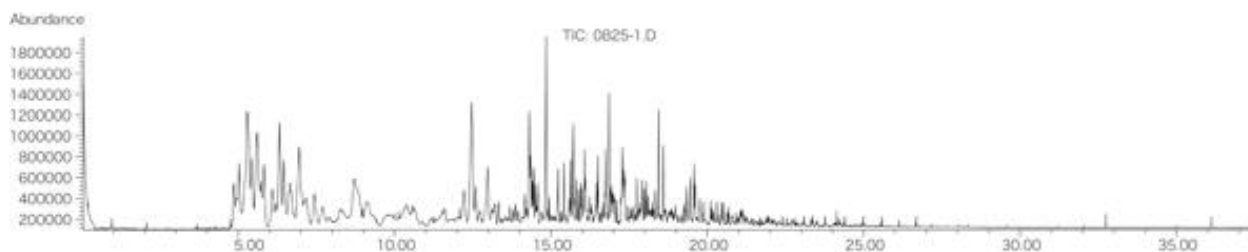


InertSearch™ for GC

InertCap® Applications

Crude oil

Data No. GA041-0000



System : GC/MS OPTIC3
Column : InertCap 5MS/Sil
0.25mmI.D. x 30m df=0.25µm
Column Temp. : 40°C (10min)→15°C/min→300°C (10min)
Injection : DMI 1µL
40°C→5°C/sec→150°C
Detection : MS Scan
Sample : Crude oil