

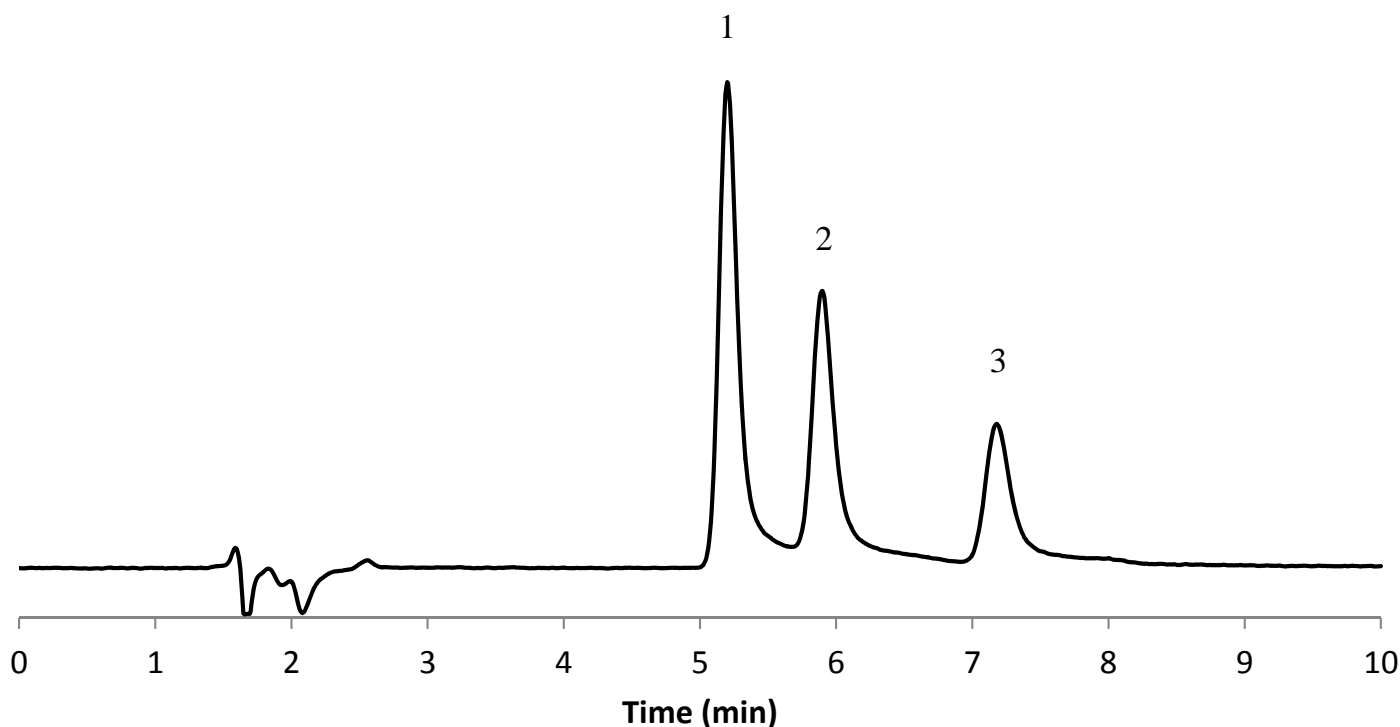
InertSearch™ for LC

Inertsil® Applications

Analysis of catecholamines with HILIC mode separation and fluorescence detection

Data No. LL010-0000

*The chromatogram was provided by Dr. Makoto Tsunoda,
Graduate School of Pharmaceutical Sciences, University of Tokyo,
7-3-1 Hongo, Bunkyo-ku, Tokyo 113-0033, Japan*



Conditions

Column : Inertsil Amide
(5 μ m, 150 x 3.0 mm I.D.)
Column Cat. No. : 5020-07815
Eluent : A) CH₃CN
B) 20 mM HCOONH₄ in H₂O (pH 3.0, HCOOH in H₂O)
A/B = 80/20, v/v
Flow rate : 0.4 mL/min
Col. Temp. : 35 °C
Detection : FL Ex 280 nm Em 320 nm
Injection Vol. : 5 μ L
Sample : Standard solution

Analyte:

1. Dopamine	1 μ mol/L
2. Epinephrine	1 μ mol/L
3. Norepinephrine	1 μ mol/L