



LUXURY VILLA TENTS



GREEN STAR





**GREEN STAR** – where innovation, sustainability, and architecture go hand in hand to provide the single most satisfying glamping experience

Green Star is ruled by extensive work experience, in-house developing technologies, and precious know-how. Two highly dedicated teams of experts from Slovenia, joining creative forces from the most innovative architectural studio and first-rate glamorous tent production company, we are renowned for redefining luxurious experiential accommodations, thus paving the way to an exciting future in this type of lodging segment.

**SMART DESIGN** – we bring concepts to life in all their uniqueness, glam and functionality without having to sacrifice any sustainability elements or lower levels of desired sophistication, suitable for private or business use.

Layers of prudently selected world-class fabrics are used to guarantee longevity, defying the most unfavorable weather conditions. Wooden platforms, on which luxurious tents stand, are supported by 36 legs and can be equally efficiently set up on either straight or uneven terrains.

**SUSTAINABLE MATERIALS** – we use natural, sustainable materials, all certified and originating from within Europe. The TILY solid wood plates and cross-laminated timber represent a clever, unique solution that makes the construction frame last longer than you ever imagined possible. The Bedouin lodging experience does not merely offer a glamorous getaway, it also ensures high-standard protection and safety, so all there is left to do, is to be carefree and enjoy.

**GREEN SOLUTIONS** – thinking green while developing modular concepts allows us to make sudden alterations, when so required, to change or enhance individual parts, remove or add them, yet creating no unnecessary harmful environmental impact as all the materials are 100% recyclable.

**INNOVATIVE VILLA DESIGN BENEFITS** – eco-friendly, adventurous, smart, and authentic with a highly glamorous touch. We are proving that luxurious resorts and glamping sites can be and are created while dutifully respecting the natural environment and appreciating ecological safety. Our in-house developed smart design enables the tent villas to be set up in several variations, all supporting you on your spiritual journey, volunteer tourism and nature-embracing eco-tourism.



BEDOUIN LUXURY VILLA TENT 110



LUXURY VILLA TENT 55



LUXURY VILLA TENT GAIA 64



PLEASURE TENT 37



PLEASURE TENT 25



PLEASURE TENT 14



FESTIVAL GHOST TENT 14



KINGDOM TENT 9X5



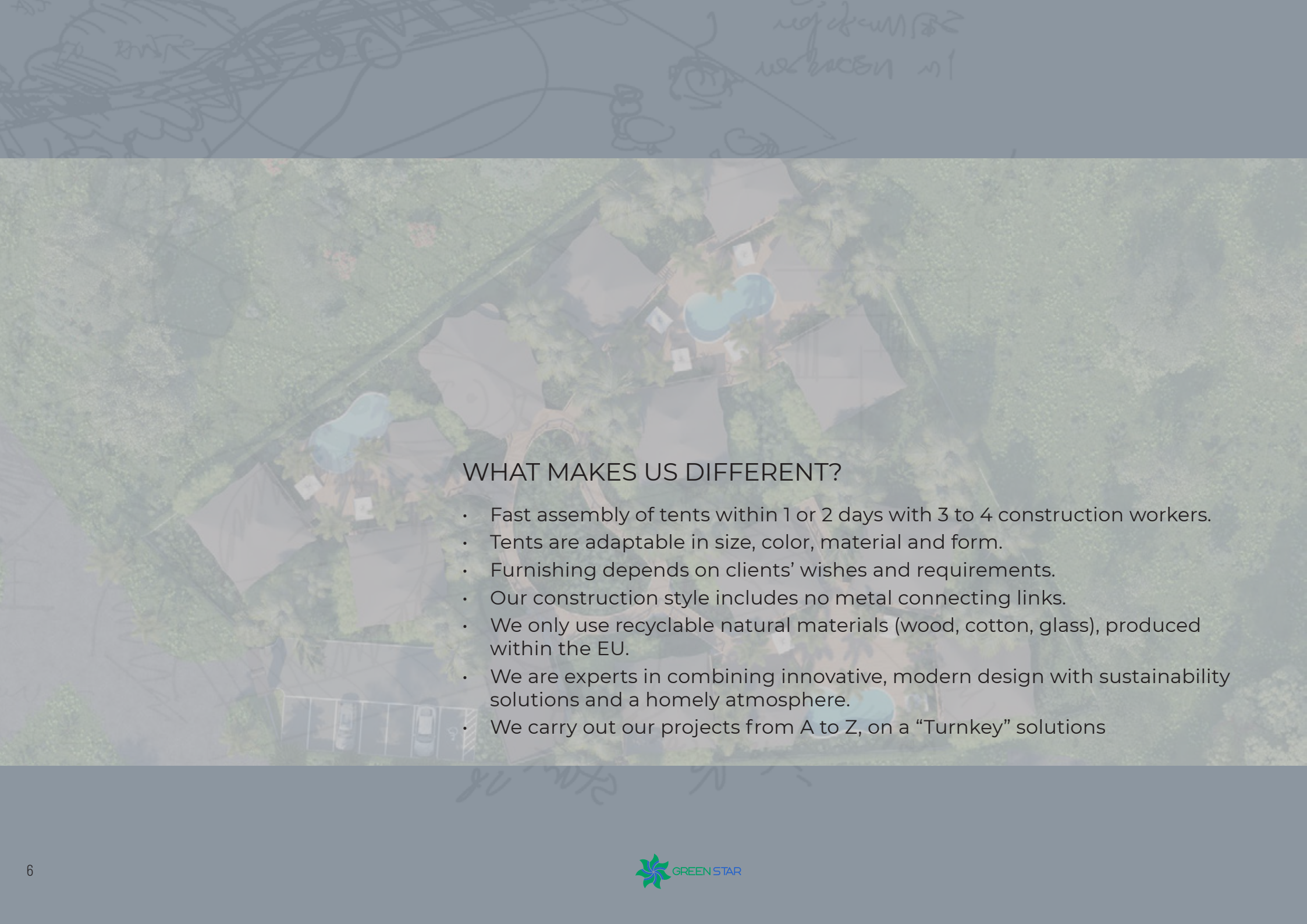
KINGDOM TENT 6X4



ADVENTURE TENT

# CONTENTS

<b>THE BEDOUIN LUXURIOUS LINE</b>	<b>7</b>
BEDOUIIN LUXURY VILLA TENT 110	8
LUXURY VILLA TENT GAIA 64	18
LUXURY VILLA TENT 55	20
<b>THE PLEASURE LINE</b>	<b>25</b>
PLEASURE TENT 37	26
PLEASURE TENT 25	30
PLEASURE TENT 14	32
FESTIVAL GHOST TENT 14	34
<b>THE KINGDOM LINE</b>	<b>36</b>
KINGDOM TENT 9X5	36
KINGDOM TENT 6X4	38
<b>THE ADVENTURE LINE</b>	<b>40</b>
ADVENTURE TENT	40
<b>MATERIAL &amp; DURABILITY</b>	<b>42</b>
<b>REFERENCES</b>	<b>48</b>
<b>ABOUT GREEN STAR</b>	<b>51</b>
<b>ABOUT ROBERT KLUN ARCHITECTS</b>	<b>52</b>

An aerial photograph of a tented campsite. The site is surrounded by dense green trees. Several large, dark-colored tents are pitched in a row. In the center, there are two swimming pools, one larger and one smaller. A wooden bridge or walkway crosses a stream or path through the site. The overall atmosphere is serene and natural.

## WHAT MAKES US DIFFERENT?

- Fast assembly of tents within 1 or 2 days with 3 to 4 construction workers.
- Tents are adaptable in size, color, material and form.
- Furnishing depends on clients' wishes and requirements.
- Our construction style includes no metal connecting links.
- We only use recyclable natural materials (wood, cotton, glass), produced within the EU.
- We are experts in combining innovative, modern design with sustainability solutions and a homely atmosphere.
- We carry out our projects from A to Z, on a "Turnkey" solutions

# THE BEDOUIN LUXURIOUS LINE

Tamed luxury in the vast wilderness



Bedouin tents – highly practical, comfy, and fabulous-looking. Spending leisure time in such a relaxing environment provides an authentic, close-to-nature experience, while the solid wood terrace is nothing short of ideal for cozy socializing. The wooden deck can be equipped with stylish outdoor furniture, a table with chairs or an outdoor sofa or beanbags,

however, opting for small pool options or a jacuzzi might be an excellent idea as well.

The sophisticated Bedouin line are available in various adaptable layouts. The assembled Bedouin can be presented either without furnishings, with a bathroom only, or completely furnished and fully optimized to provide superior comfort.

Furnished tents are offered according to our own design, however, you may purchase tents without any furnishings and design the interior yourself. Our team of highly skilled design experts will happily help you create your ideal interior, all while considering the aesthetics, sensitive to existing architecture and surrounding landscape.

# BEDOUIN LUXURY VILLA TENT 110



## LUXURY VILLA TENT 110

### Type A

2 bedrooms with king-size beds

- living area: 56 m<sup>2</sup>
- platform: 110 m<sup>2</sup>
- terrace: 54 m<sup>2</sup>

CLTimber 16 x 16 cm

Bedrooms: 1 or 2 or 0 (or office...)

Bathroom : YES (or luxury bathroom of corian)

### Type B

2 bedrooms with king-size beds  
and large living area

- living area: 80 m<sup>2</sup>
- platform: 110 m<sup>2</sup>
- terrace: 30 m<sup>2</sup>

CLTimber 16 x 16 cm

Bedrooms: 1 or 2 or 0 (or office)

Bathroom : YES (or a luxurious bathroom,  
designed with solid surface material Corian by  
DuPont)

### Layouts:

6 basic plus CUSTOMIZABLE OPTIONS



## BEDOUIN LUXURY VILLA TENT 110

7,50 x 6,60 m = 56 m<sup>2</sup> or 7,50 x 10,10 m = 80 m<sup>2</sup>  
on 110 m<sup>2</sup> wooden platform

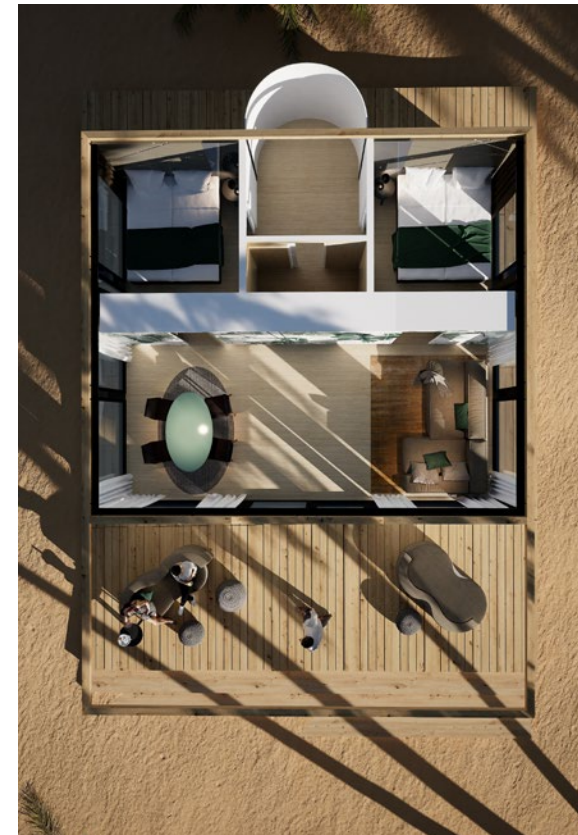
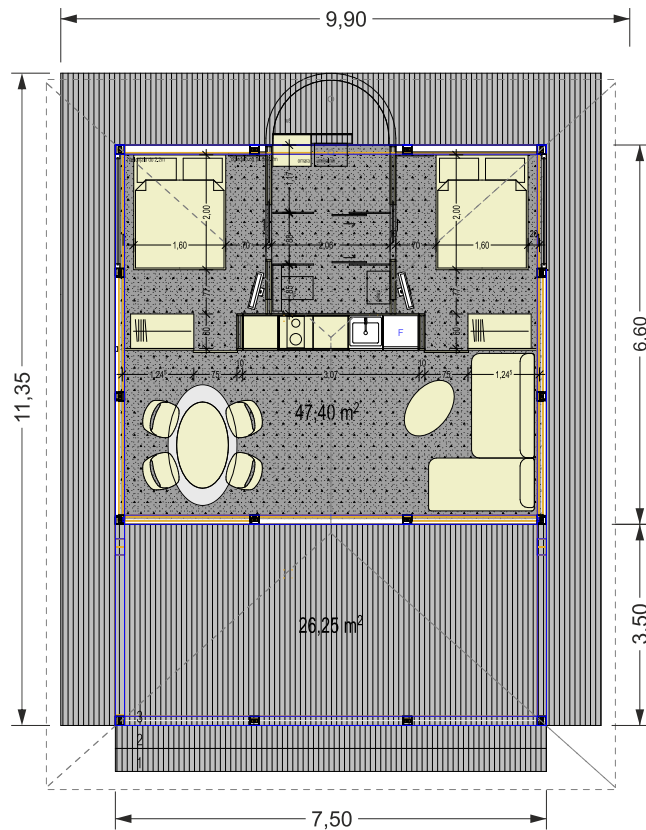


The largest and most luxurious tent from the Bedouin line is named Villa for a reason. The living area spans across spacious 80 m<sup>2</sup> interior, placed on a 110 m<sup>2</sup> wooden platform. Fully equipped and furnished, it offers an elegant oasis of tranquility and supreme comfort in natural surroundings, without disturbing the wholeness of the space where it has been set up.

The exterior of the tent is created in beautiful creamy earth tones, however, customers can choose between various color options to make sure the top-quality canvas, supplied by the renowned Sattler company, is absolutely to their liking. Inside, Bedouin's unique solution of combining the roof and the ceiling of the tent, adds to maintaining favorable temperatures in the living area.

# BEDOUIN LUXURY VILLA TENT 110

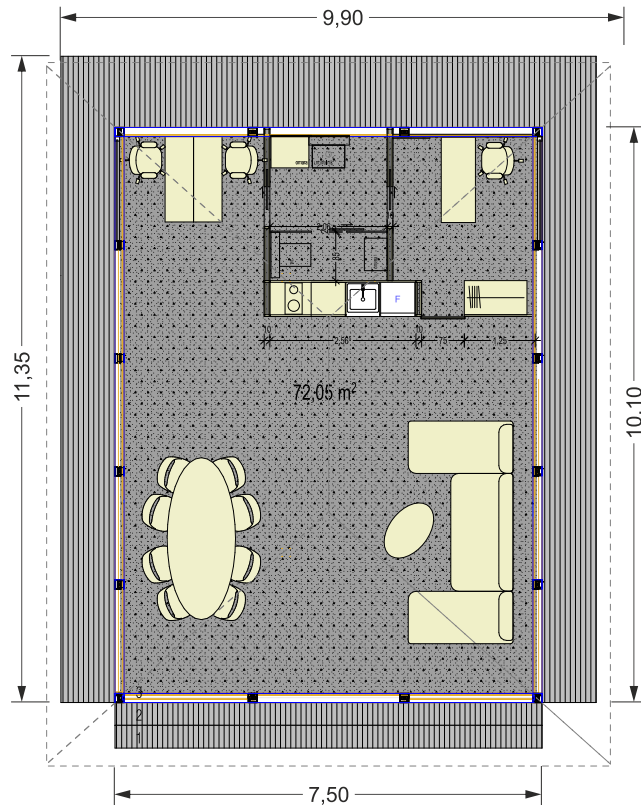
## FLOOR PLAN TYPE 1.1 WITH TERRACE



7,50 x 6,60 m = 56 m<sup>2</sup> on 110 m<sup>2</sup> wooden platform

# BEDOUIN LUXURY VILLA TENT 110

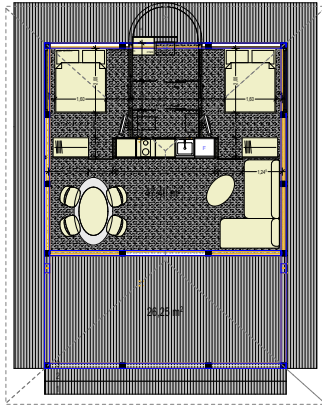
## FLOOR PLAN TYPE 2.2 WITHOUT TERRACE



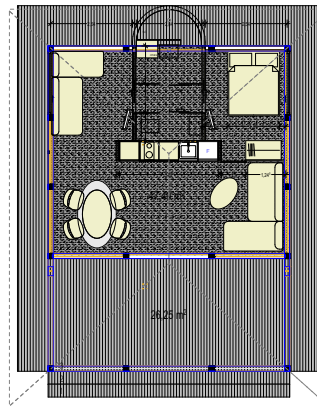
7,50 x 11,10 m = 83 m<sup>2</sup> on 110 m<sup>2</sup> wooden platform

# BEDOUIN LUXURY VILLA TENT 110

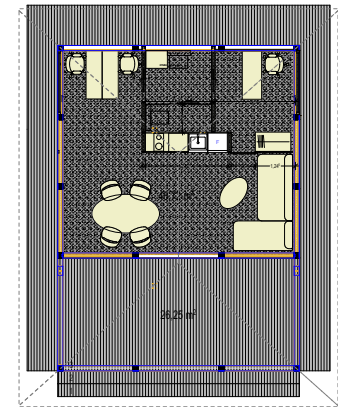
## FLOOR PLAN TOPTIONS



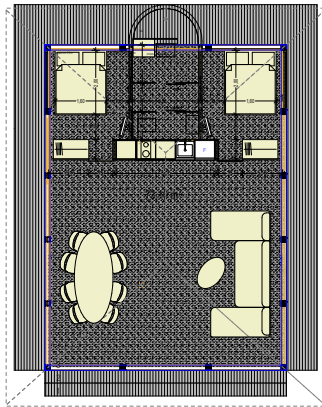
type 1.1



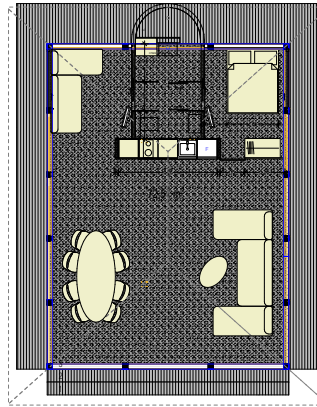
type 1.2



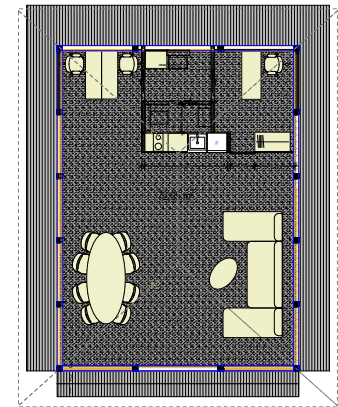
type 1.3



type 2.1



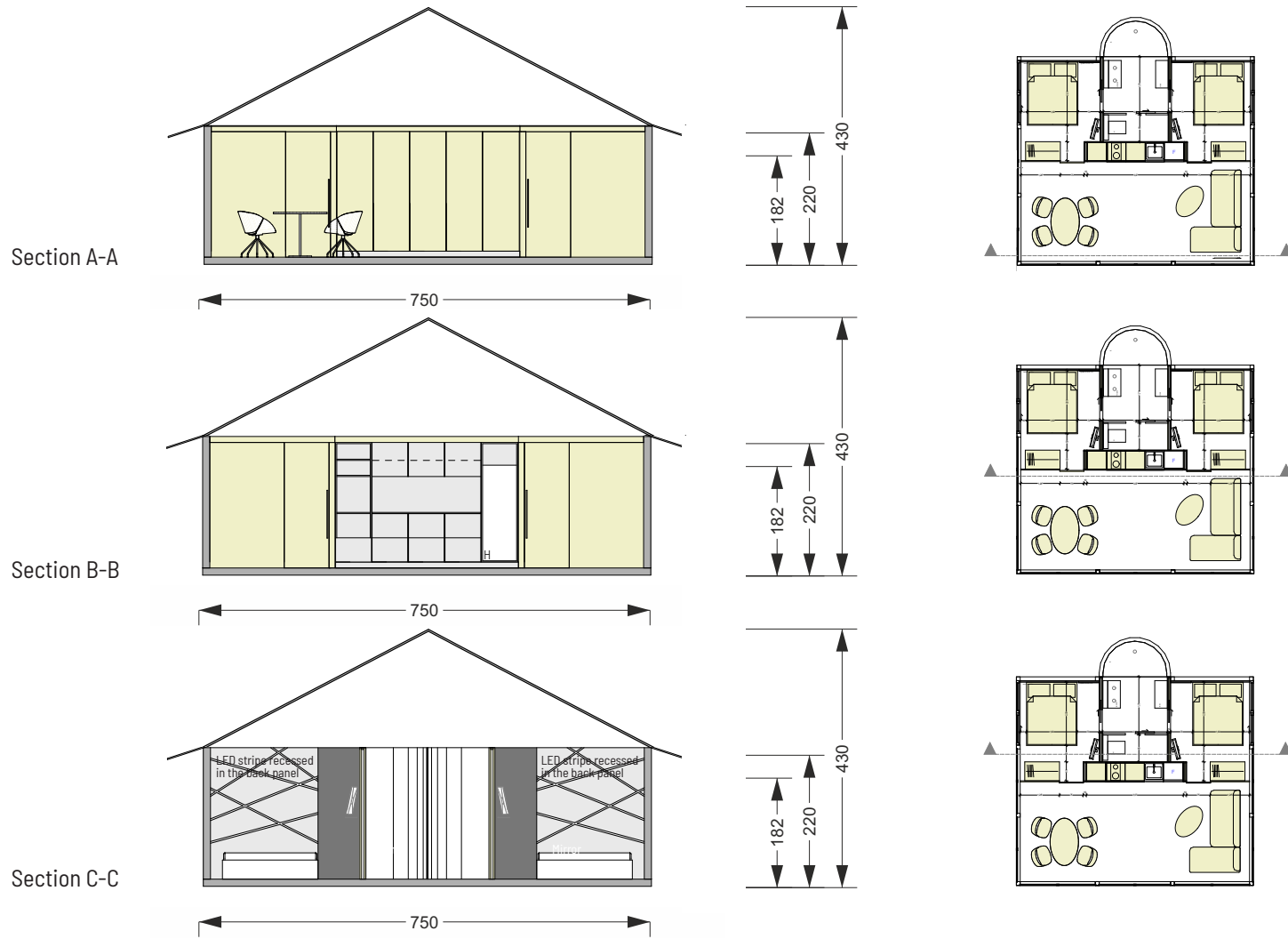
type 2.2



type 2.3

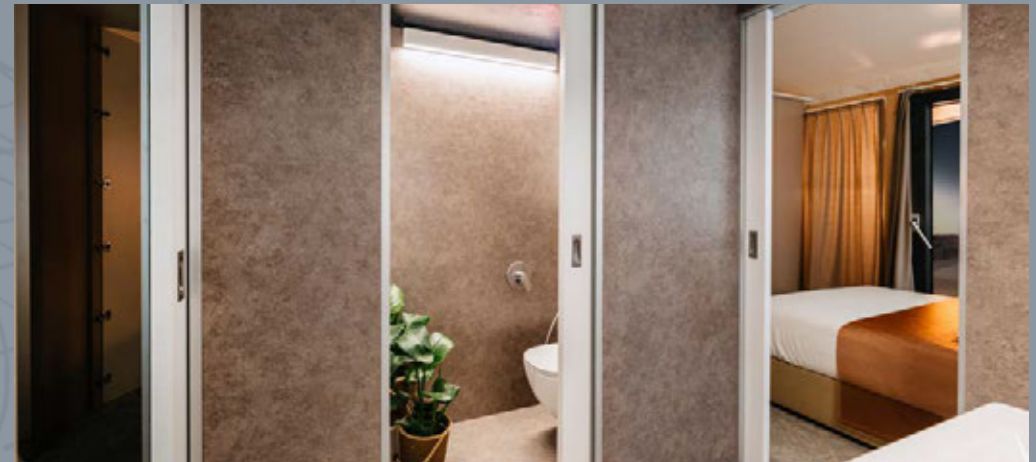
# BEDOUIN LUXURY VILLA TENT 110

## SECTIONS



# BEDOUIN LUXURY VILLA TENT 110

## INTERIORS - THE LIVING AREA



The exquisite living room area of the Bedouin Luxury Villa Tent is furnished in a way that follows impeccable modern style. Guests can rest and relax on a specially-designed sofa with extra comfortable pillows, while smart decorations and artful wallpapers assure the feeling of well-being and warmth.

Eight windows offer beautiful views from all sides of the Bedouin Luxury Villa Tent, however, when guests desire some privacy, suitably thick curtains in serene color tones will provide all the intimacy one requires.

# BEDOUIN LUXURY VILLA TENT 110

## INTERIORS - THE BATHROOM



The Bedouin Luxury Villa Tent comes equipped with a marvelous cool-toned walk-in bathroom, created with natural materials and components,

including a stand-up shower, shelving, a mirror, and a wash basin with a cabinet.

# BEDOUIN LUXURY VILLA TENT 110

## OUTDOOR VIEW



Outside, you will find a highly comfortable solid wood terrace. Covering over 20 m<sup>2</sup>, it is perfectly suited for hosting evening gatherings or enjoying more quiet private moments. It is available with an optional shade sail to

provide more coolness, shade, and privacy. Flooring, made of CLT plates, may be either covered with vinyl or a trendy carpet.

# BEDOUIN LUXURY VILLA TENT 110

## EQUIPMENT

### STANDARD EQUIPMENT

#### **CONSTRUCTION for TENT**

Beduin Tent GreenStar construction

Beduin Tent platform 8,00 x 6,50 m (legs nivelation)

Tili plates and pinus wood and terrace

Staircase 6,50 m

RUF fabric

Inside fabrics, back walls

Stretch pvc flooring 2TEC2

Lights and lighting system

Windows ALU anthracite, 6 fixed glass panels, 3x sliding system

Print, lift, packaging ...

#### **EQUIPMENT**

Electrical installation system

Air conditioning installation

Mechanical installations, plumbing ...

#### **BATHROOM**

2 wash basins

Toilet

Shower

Bathtub

Cabinet

#### **FURNITURE for TENT**

2 beds with optional positioning to double bed

Night stands with lamps

Upholstered sofa Klun K90 Babaloo

Table, solid wood

2 chairs, solid wood upholstered

Wardrobe

### EXTRAS

#### **CONSTRUCTION**

Wide wooden staircase

#### **BATHROOM**

Made from Kerrock

#### **INSTALATION**

Air conditioning

#### **FURNITURE**

Rug

Curtains

TV set

Upholstered wall, lights, panels, mirror

#### **KITCHEN**

Cabinets with doors, elaminated decor design

Home appliances: refrigerator, dishwasher, microwave oven

#### **OUTDOOR FURNITURE for TERRACE**

Table, solid wood

2 chairs, solid wood

Outdoor sofa

Outdoor lighting

# LUXURY VILLA TENT GAIA 64



Protection against heat and unfavorable weather conditions is secured via durable double fabric.

Construction style and all prudently chosen materials of the Bedouin Luxury 55 Tent also make sure the ventilation is incredibly efficient, thus spending time inside is always a pleasure.

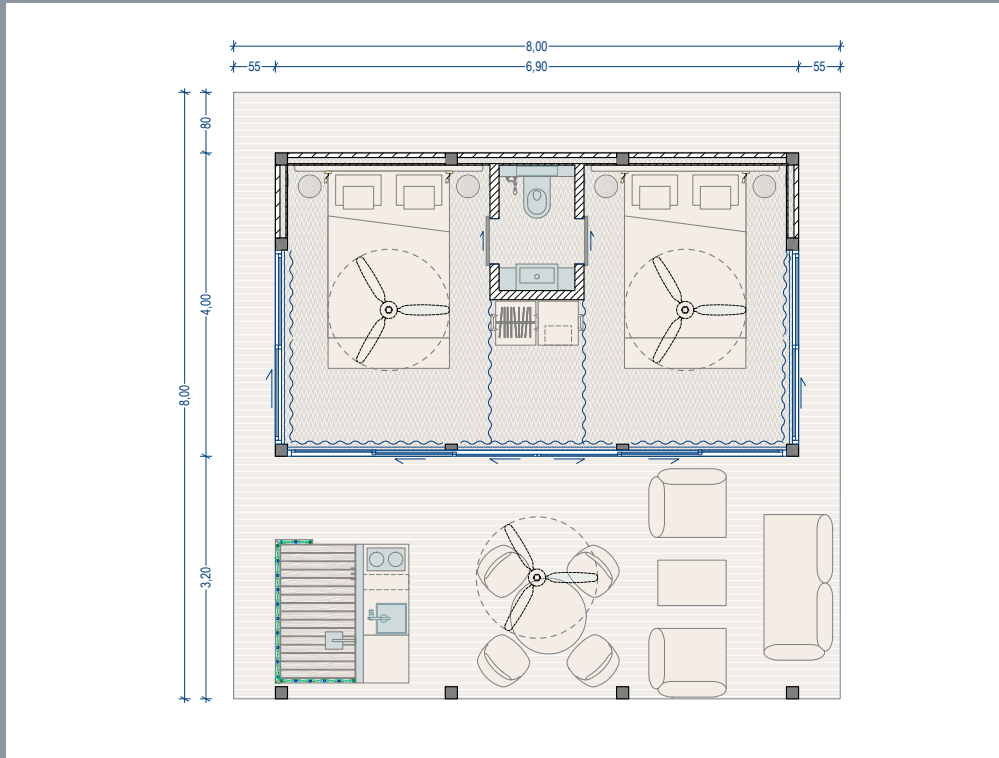
AC is optional. The tent also comes equipped with classy lighting solutions.

Making sure the construction is solid and long-lasting is the 12 x 12 cm profile CLT wood (Cross Laminated Timber Wood) – the best natural solution, synonymous with strength, protection

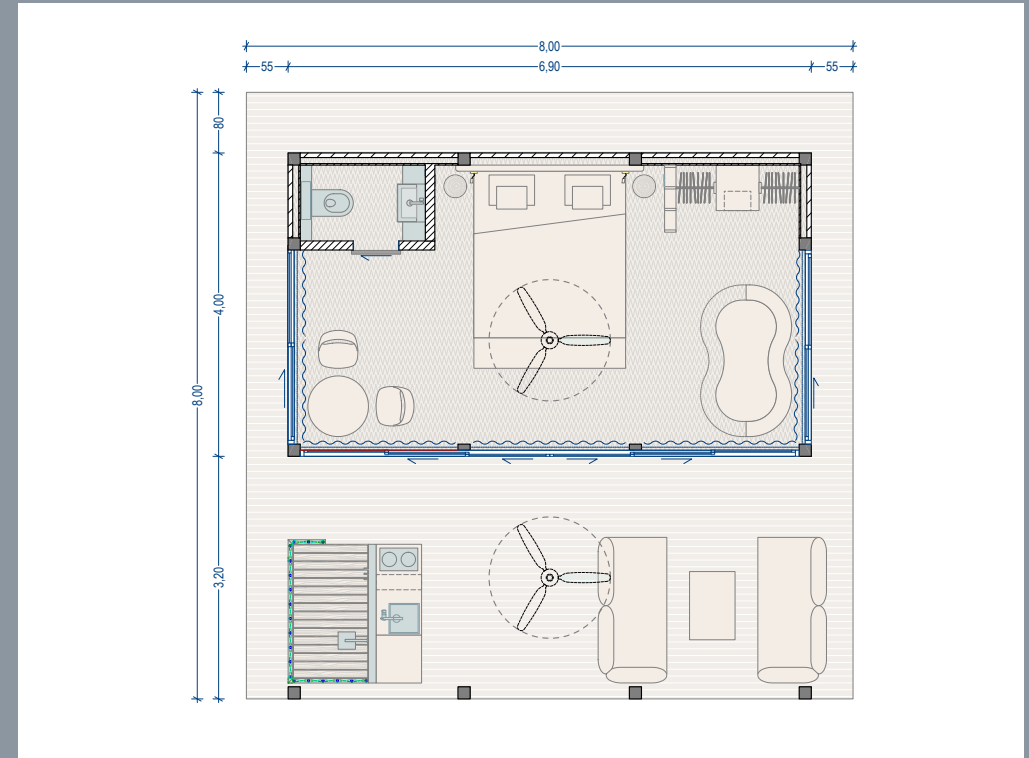
and longevity. There are no metal elements connecting the construction frame in order to avoid inevitable corrosion issues. Furthermore, a completely natural construction without intrusive metal parts is more pleasing to the eye.

# LUXURY VILLA TENT GAIA 64

6,90 x 4,00 m = 27,6 m<sup>2</sup> on 64 m<sup>2</sup> wooden platform



2-BED BEDOUIN GAIA 64 TENT



1-BED BEDOUIN GAIA 64 TENT

1 or 2 Bedrooms with king-size bed

- living area: 27,6m<sup>2</sup>
- platform: 64 m<sup>2</sup>
- terrace: 25,6 m<sup>2</sup>
- CL Timber 12 x 12 cm

# LUXURY VILLA TENT 55



## BEDOUIN LUXURY 55 TENT

1 or 2 Bedrooms with king-size bed (up to 4 beds)

- living area: 35 m<sup>2</sup>
- platform: 55 m<sup>2</sup>
- terrace: 20 m<sup>2</sup>

CLTimber 12 x 12 cm

Bedrooms: 1 or 2

Bathroom : YES

**Layouts: 3**

Protection against heat and unfavorable weather conditions is secured via durable double fabric. Construction style and all prudently chosen materials of the Bedouin Luxury 55 Tent also make sure the ventilation is incredibly efficient, thus spending time inside is always a pleasure. AC is optional. The tent also comes equipped with classy lighting solutions.

Making sure the construction is solid and long-lasting is the 12 x 12 cm profile CLT wood (Cross Laminated Timber Wood) – the best natural solution, synonymous with strength, protection and longevity. There are no metal elements connecting the construction frame in order to avoid inevitable corrosion issues. Furthermore, a completely natural construction without intrusive metal parts is more pleasing to the eye.



# LUXURY VILLA TENT 55

6,50 x 5,40 m = 35 m<sup>2</sup> on 55 m<sup>2</sup> wooden platform

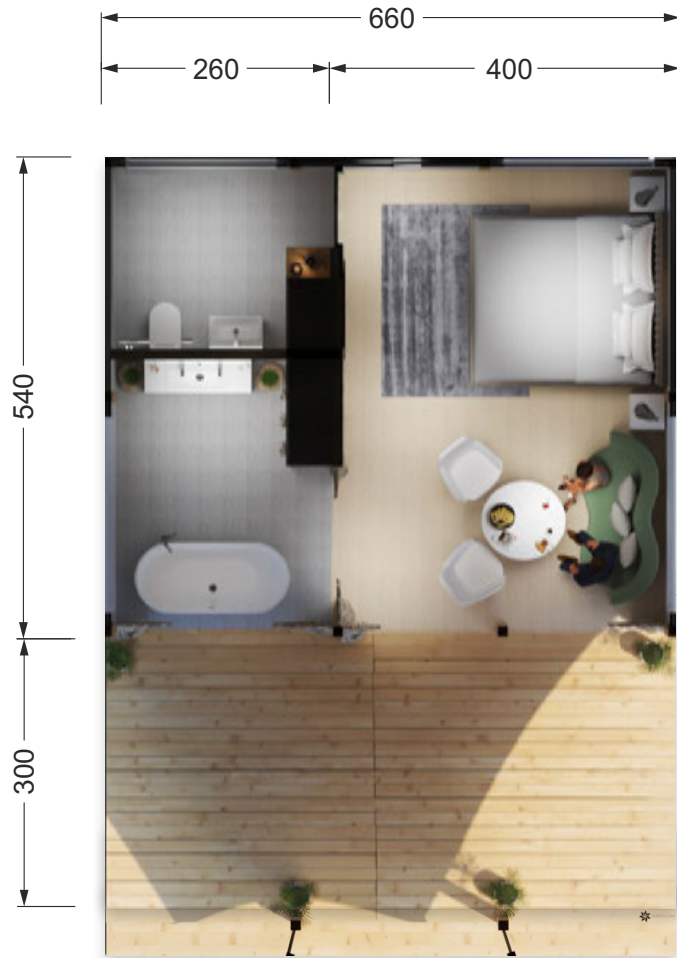


The exterior of the tent is created with bright colors, however, customers can choose between various colors of the top-quality canvas, supplied by the renowned Sattler company.

Assembly of the Bedouin Luxury 55 Tent is quick and simple. It requires no more than 1-2 days with 3-4 workers completing the construction.

# LUXURY VILLA TENT 55

## FLOOR PLAN



# LUXURY VILLA TENT 55

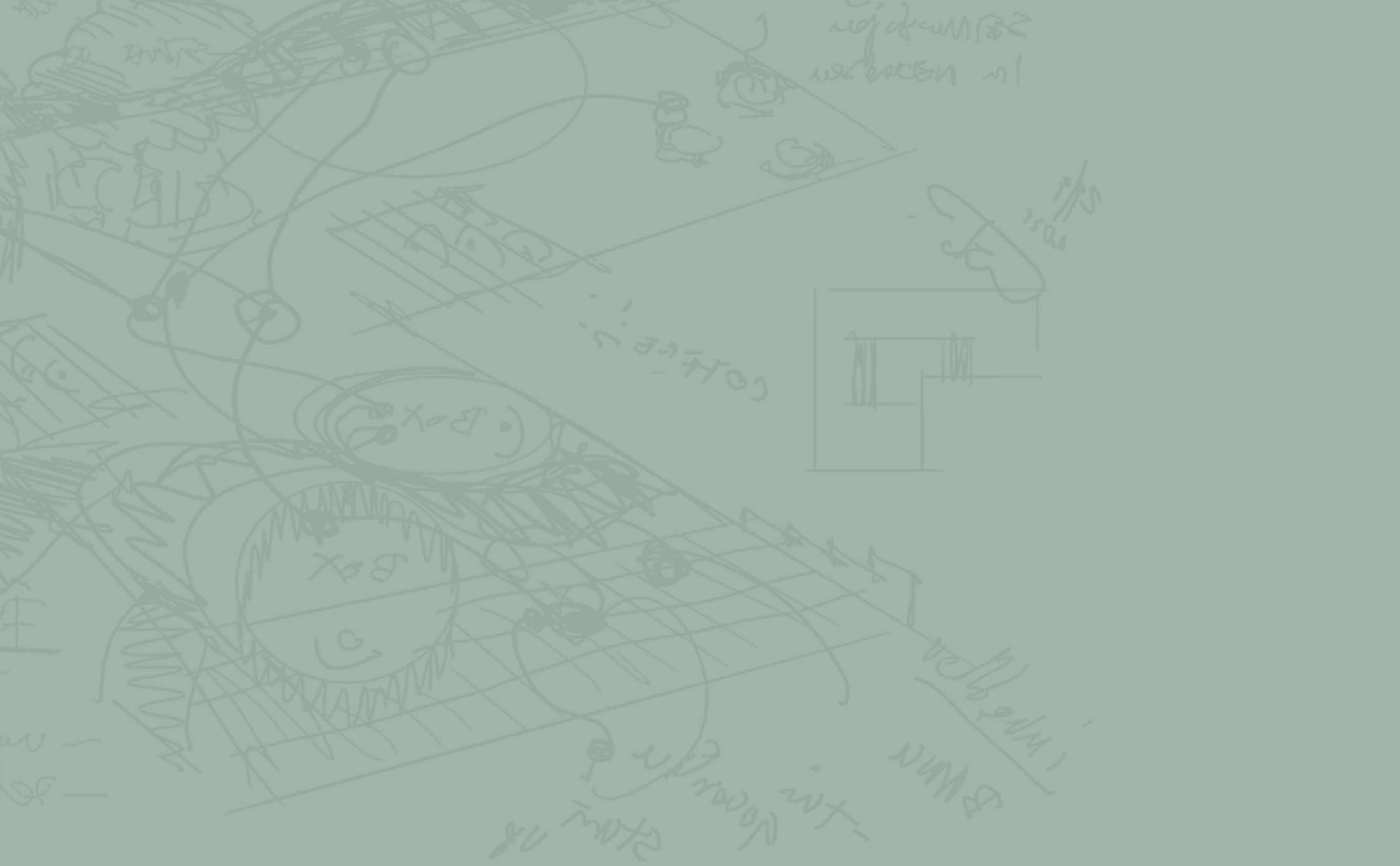
## INTERIORS - THE LIVING AREA AND THE BATHROOM



The bedroom comes optionally equipped with a TV. Customers may also decide to add two large cabinets for the luggage.

The bathroom, if optionally chosen, is elegantly furnished with a large mirror, a modern bathtub and two wash basins with

storage cabinets. Interior design is focused on being sustainable and made of natural materials and components.



# THE PLEASURE LINE

Fill your vacation with fun times and comfort



PLEASURE tents – highly practical and comfy. Spending leisure time in a fun, superbly relaxing environment provides an authentic, close-to-nature experience, while the solid wood terrace is nothing short of ideal for a little bit of cozy socializing.

The PLEASURE line represents four models from 25 m<sup>2</sup> to 9 m<sup>2</sup> of interior space, ideal for 4 (the largest tent) to 2 people (the smallest tent) – the PLEASURE Tent 37, the PLEASURE Tent 25, the LEISURE Tent 14, and the Festival Ghost Tent 9, each available in various adaptable layouts.

# PLEASURE TENT 37



## PLEASURE TENT 37



### PLEASURE 37 TENT

1 or 2 bedrooms with king-size beds  
(up to 4 beds)

- living area: 25 m<sup>2</sup>
- platform: 37,5 m<sup>2</sup>
- terrace: 12,5 m<sup>2</sup>

CLTimber 26 x 10 cm

Bedrooms: 1 or 2

Bathroom : optional

**Layouts: 3**

The largest PLEASURE tent variation spans over 25m<sup>2</sup> living area on a platform of 37,50m<sup>2</sup>. It comes with a ventilation system for superb inner climate conditions (AC is optional) and four windows, offering beautiful views from all sides of the tent. Protection against heat and unfavorable weather conditions is secured via durable double fabric.

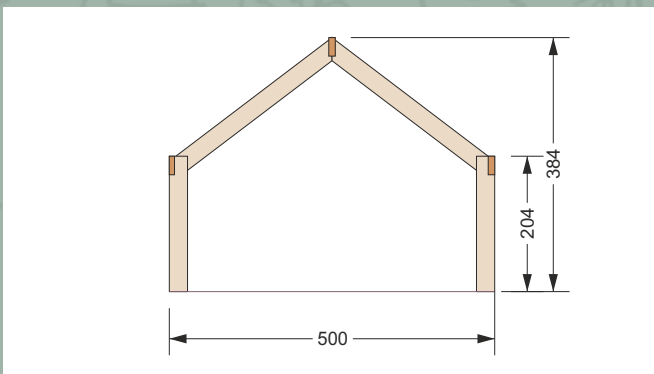
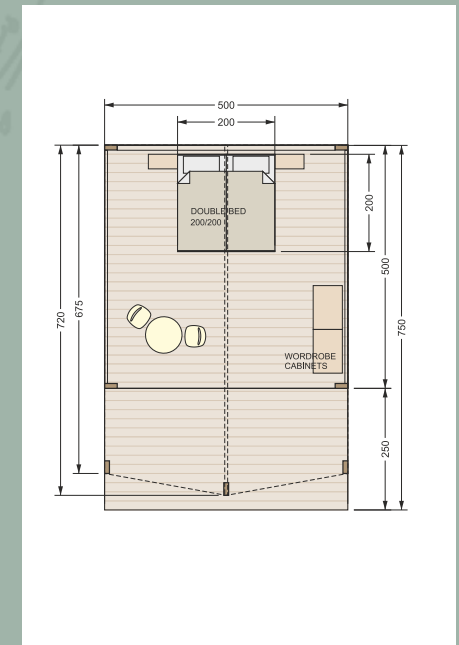
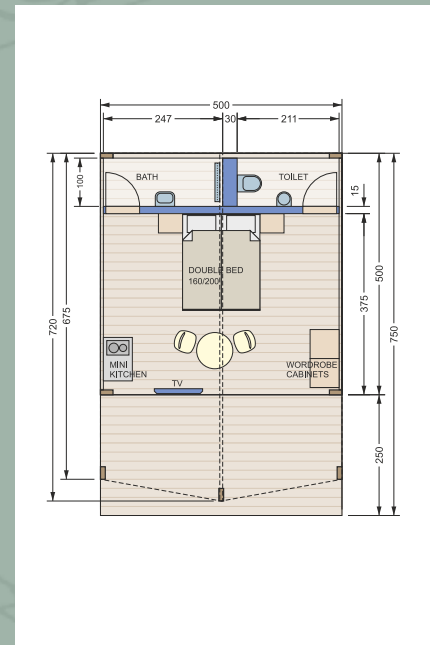
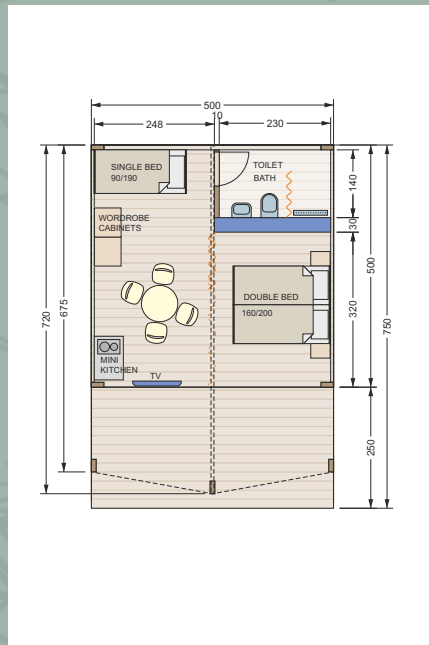
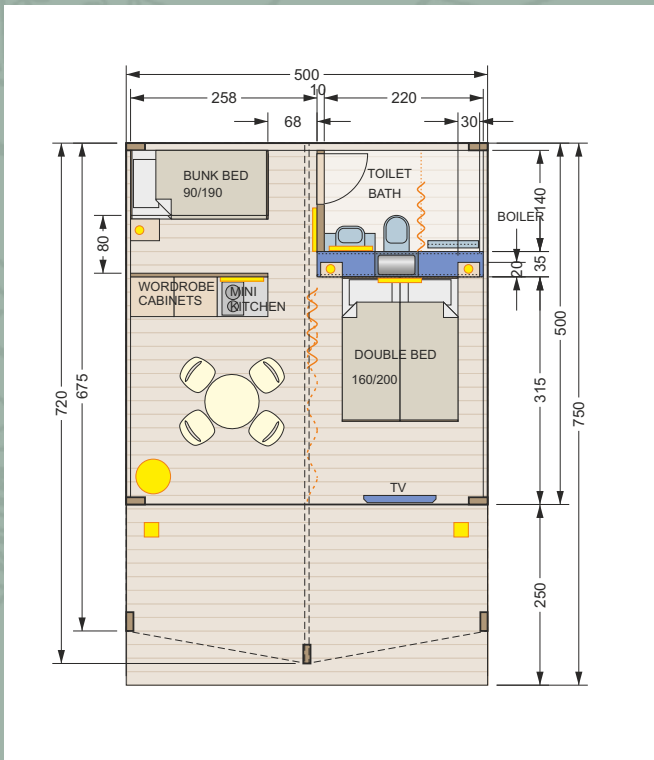
Its interior has been designed to ensure maximum efficiency in making the most out of every available square meter and furnishing the tent with two elegant beds and cabinets. Equipped with lights, one can easily enjoy leisure time in the evenings reading books, playing board games or chatting with friends.



# PLEASURE TENT 37

25 m<sup>2</sup> with ventilation and four windows on the platform of 37,50 m<sup>2</sup>

## FLOOR PLAN - LAYOUT OPTIONS



Making sure the construction is solid and long-lasting is the 26 x 10 cm profile CLT wood (Cross Laminated Timber Wood) – the best natural solution, synonymous with strength, protection and longevity.

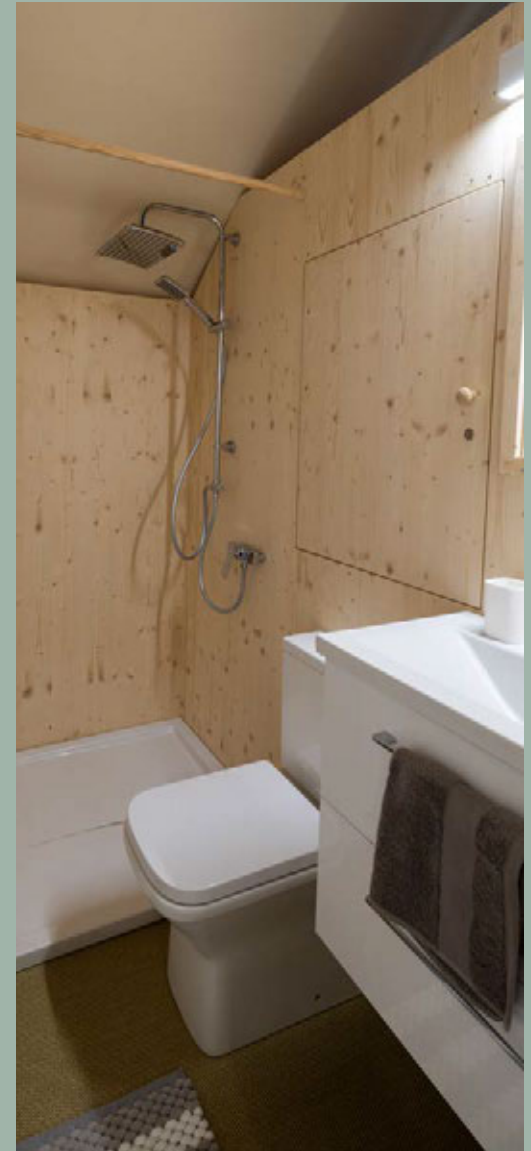
There are no metal elements connecting the construction frame in order to avoid inevitable corrosion issues. Furthermore, a completely natural construction without intrusive metal parts is more pleasing to the eye. Only recyclable natural materials (wood, cotton, glass), produced within the EU, are used to create our tents.

Equipped with lights, one can easily enjoy leisure time in the evenings.

Fast assembly of tents is offered, within no more than 1 or 2 days and with 3 to 4 construction workers completing the construction work. Tents are adaptable in size, color, material and form – customers are invited to even choose custom-made graphics or printed logos.

# PLEASURE TENT 37

## INTERIORS - THE LIVING AREA AND THE BATHROOM



# PLEASURE TENT 25



## PLEASURE 25 TENT

1 bedroom with a king-size bed

- living area: 16 m<sup>2</sup>
- platform: 25,5 m<sup>2</sup>
- terrace: 8 m<sup>2</sup>

CLTimber 26 x 10 cm

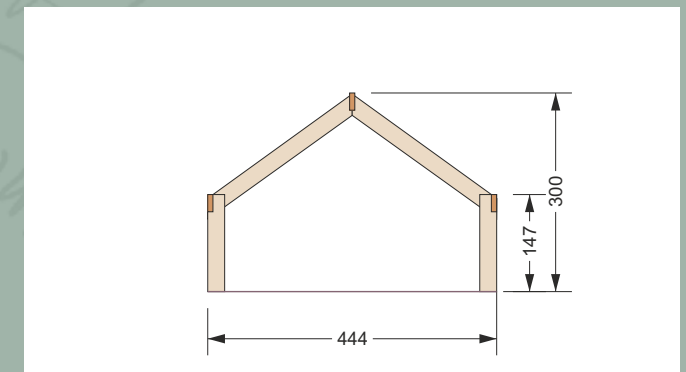
Bedrooms: 1

Bathroom: optional

### Layouts: 3

The PLEASURE 25 comes with a ventilation system for superb inner climate conditions (AC is optional).

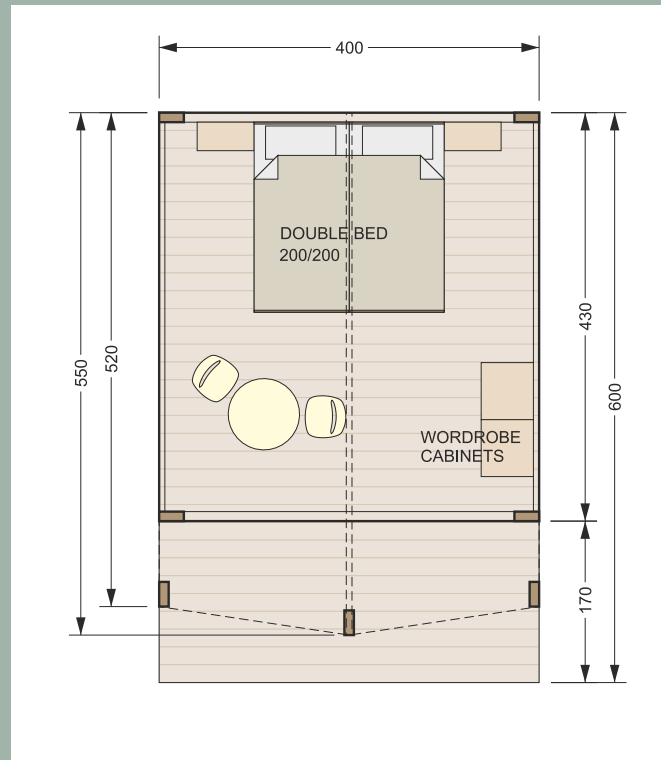
Its interior has been designed to ensure maximum efficiency in making the most out of every available square meter.



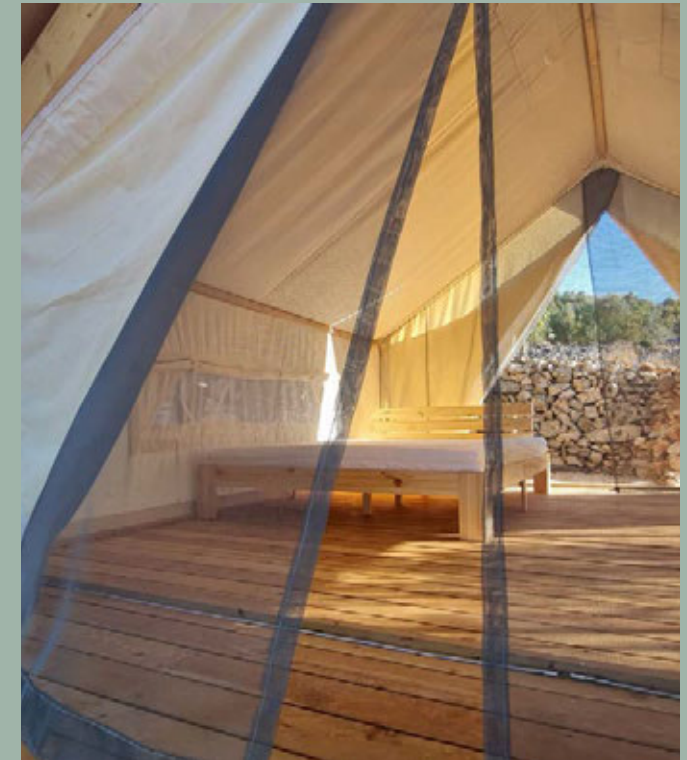
# PLEASURE TENT 25

16 m<sup>2</sup> with ventilation and four windows on the platform of 25 m<sup>2</sup>

## FLOOR PLAN



## DETAILS



Making sure the construction is solid and long-lasting is the 26 x 10 cm profile CLT wood (Cross Laminated Timber Wood) – the best natural solution, synonymous with strength, protection and longevity.

There are no metal elements connecting the construction frame in order to avoid inevitable

corrosion issues. Furthermore, a completely natural construction without intrusive metal parts is more pleasing to the eye. Only recyclable natural materials (wood, cotton, glass), produced within the EU, are used to create our tents.

Equipped with lights, one can easily enjoy leisure time in the evenings.

Fast assembly of tents is offered, within no more than 1 or 2 days and with 3 to 4 construction workers completing the construction work. Tents are adaptable in size, color, material and form – customers are invited to even choose custom-made graphics or printed logos.

# PLEASURE TENT 14



## PLEASURE 14 TENT

1 bedroom with a king-size bed

- living area: 9 m<sup>2</sup>
- platform: 13,5 m<sup>2</sup>
- terrace: 4,5 m<sup>2</sup>

CLTimber 20 x 6 cm

Bedrooms: 1

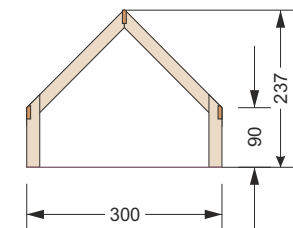
Bathroom : optional

### Layouts: 3

The PLEASURE 14 comes with a ventilation system for superb inner climate conditions (AC is optional).

Its interior has been designed to ensure maximum efficiency in making the most out of every available square meter.

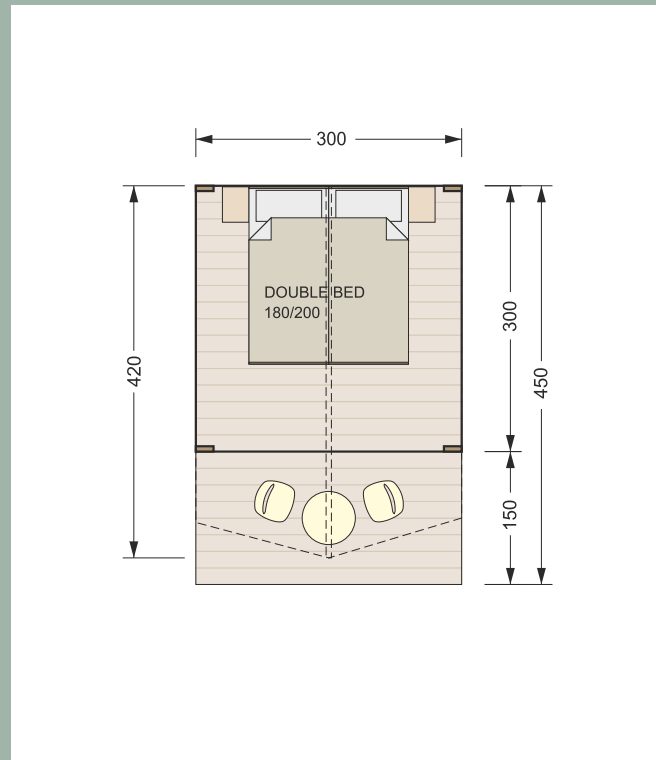
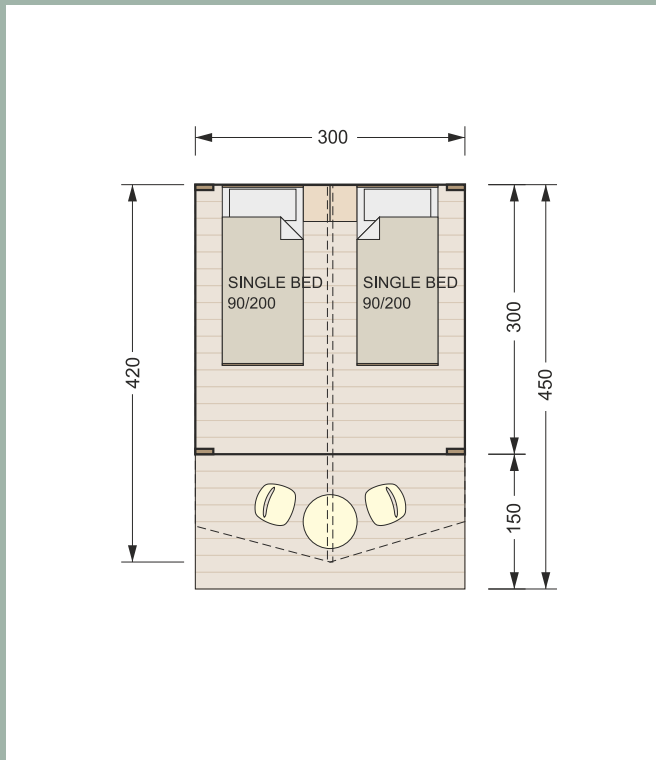
Equipped with lights, one can easily enjoy leisure time in the evenings.



# PLEASURE TENT 14

9 m<sup>2</sup> with ventilation on the platform of 13,50 m<sup>2</sup>

## FLOOR PLAN - LAYOUT OPTIONS



Making sure the construction is solid and long-lasting is the 20 x 10 cm profile CLT wood (Cross Laminated Timber Wood) – the best natural solution, synonymous with strength, protection and longevity.

There are no metal elements connecting the construction frame in order to avoid inevitable corrosion issues. Furthermore, a completely natural construction without intrusive metal parts is more pleasing to the eye.

Only recyclable natural materials (wood, cotton, glass), produced within the EU, are used to create our tents.

Fast assembly of tents is offered, within no more than 1 or 2 days and with 3 to 4 construction workers completing the construction work. Tents are adaptable in size, color, material and form – customers are invited to even choose custom-made graphics or printed logos.

# FESTIVAL GHOST TENT 14



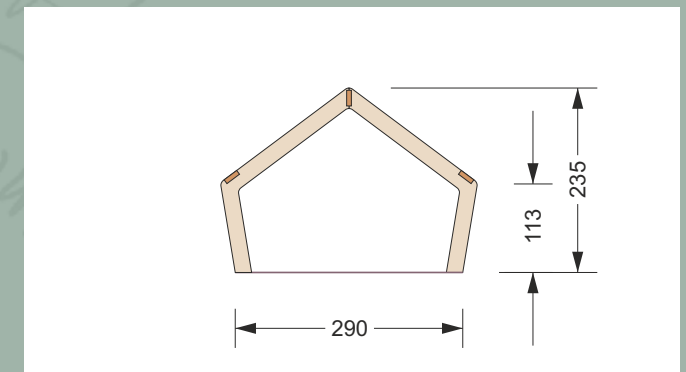
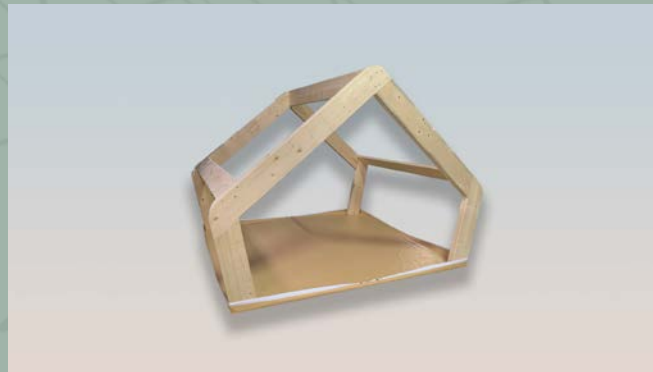
## FESTIVAL 14 GHOST TENT

1 bedroom with a king-size bed

- living area: 9 m<sup>2</sup>
- platform: 13,5 m<sup>2</sup>
- terrace: 4,5 m<sup>2</sup>

CLTimber 20 x 6 cm

Simple and fun-sized, but highly efficient and absolutely fabulous.



# FESTIVAL GHOST TENT 14

## FLOOR PLAN

Making sure the construction is solid and long-lasting is the 20 x 10 cm profile CLT wood (Cross Laminated Timber Wood) – the best natural solution, synonymous with strength, protection and longevity.

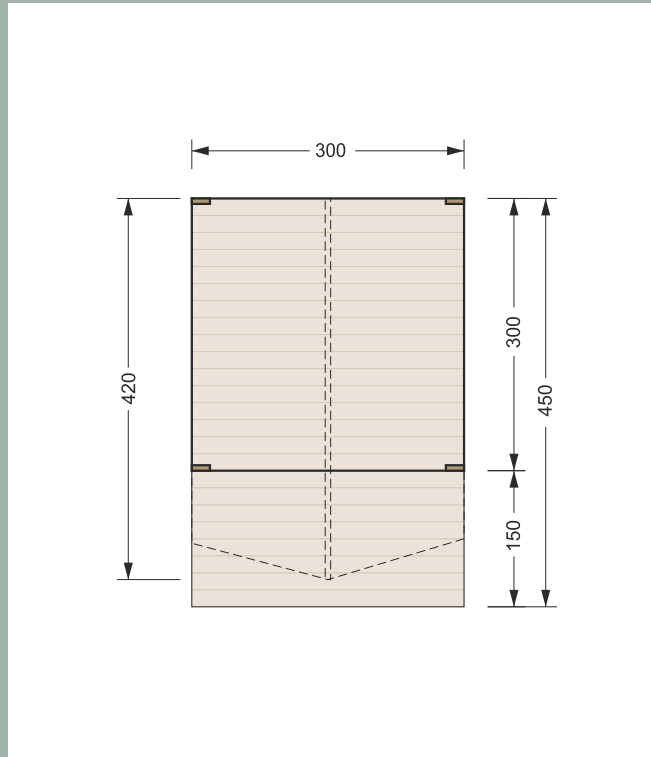
There are no metal elements connecting the construction frame in order to avoid inevitable corrosion issues. Furthermore, a completely natural construction without intrusive metal

parts is more pleasing to the eye.

Only recyclable natural materials (wood, cotton, glass), produced within the EU, are used to create our tents.

Tents are adaptable in size, color, material and form – customers are invited to even choose custom-made graphics or printed logos.

Wood construction platform 9,00 m<sup>2</sup> (3,0 x 3,0 m).



9 m<sup>2</sup> on the platform of 13,50 m<sup>2</sup>

## DETAILS



# THE KINGDOM LINE

## KINGDOM VILLA TENT 9X5



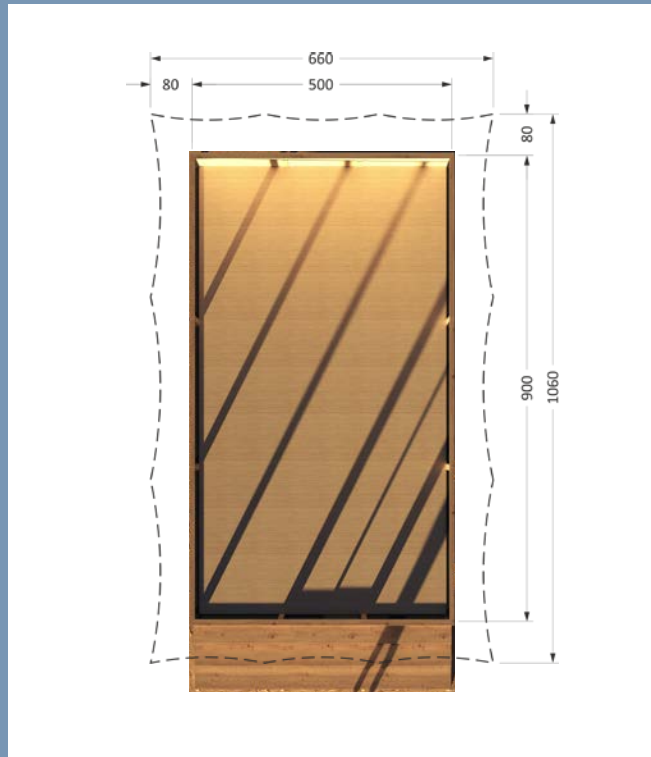
45 m<sup>2</sup> on the wooden platform

# KINGDOM VILLA TENT 9X5

Are you looking to reset, regroup, do you need to take a break? The Kingdom 9 x 5 Villa Tent from the Kingdom Line is the most elegant solution for anyone in search of a spacious, luxuriously designed, and comfortable retreat. The weather-resistant tent stands on a stable, long-lasting construction, provided by the 16 x 16 cm profile CLT Wood (Cross Laminated Timber Wood). CLT Wood is simply the best natural solution, synonymous with strength, protection, and longevity. The also tent boasts a beautifully shaped roof, available in various natural shades.

Spending time inside the 9 x 5 Villa Tent is the most pleasurable experience for the entire family – the parents will love its functionality combined seamlessly with timeless elegance, while the children will love its untamed adventurous spirit. Let yourself be entertained and relaxed while enjoying beautiful sunsets and sunrises or the serenity during the full moon.

You will find no metal elements connecting the construction frame – with this, the otherwise inevitable corrosion issues are completely avoided. Furthermore, a fully natural product with no intrusive metal elements offers is without a doubt more pleasing to the eye, giving the most wonderful impression of genuineness and the opportunity to get close to nature. The



## Floor plan

tent is created using only recyclable natural materials (wood, cotton, glass), produced within the EU.

The Kingdom Line tents are adaptable in size, color, material, and form – customers are invited to choose custom-made graphics or printed logos.

# KINGDOM VILLA TENT 6X4



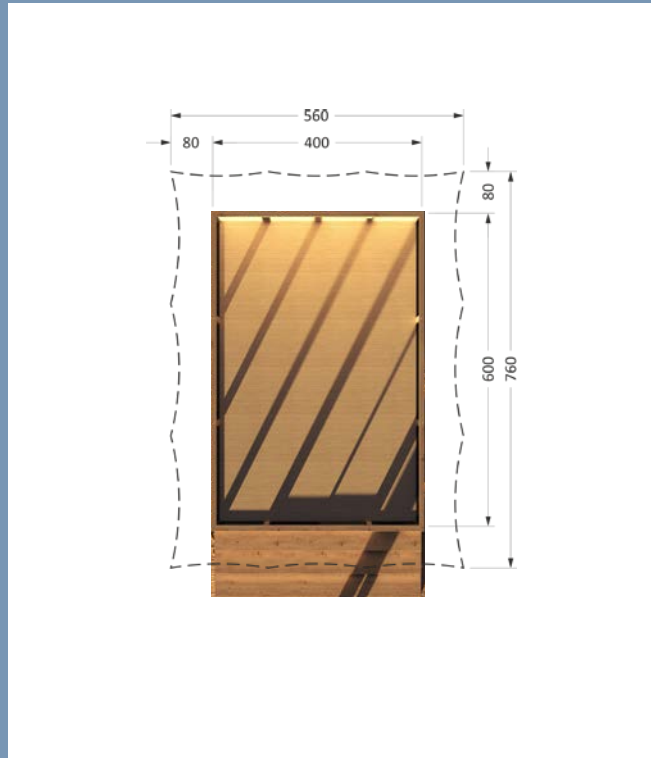
24 m<sup>2</sup> on the wooden platform

# KINGDOM VILLA TENT 6X4

Search no more – this is your ideal getaway! The Kingdom 6 x 4 is the smaller variation of a cleverly designed Villa Tent, perfect for anyone who wishes to disconnect from the everyday world in an optimized, yet still incredibly comfortable accommodation, all while enjoying the beautiful surrounding outdoors. The weather-resistant tent stands on a stable, long-lasting construction, provided by the 14 x 14 cm profile CLT Wood (Cross Laminated Timber Wood). CLT Wood is simply the best natural solution, synonymous with strength, protection, and longevity. The also tent boasts a beautifully shaped roof, available in various natural shades.

Spending time inside the 6 x 4 Villa Tent is a fun experience for the entire family – the parents will love its functionality and unique style, while the children will love its magical adventurous spirit. Enjoy your evenings grilling, playing cards, and boardgames – simply reconnecting with your loved ones!

You will find no metal elements connecting the construction frame – with this, the otherwise inevitable corrosion issues are completely avoided. Furthermore, a fully natural product with no intrusive metal elements offers is without a doubt more pleasing to the eye, giving the most wonderful impression of genuineness and the opportunity to get close to nature. The



Floor plan

tent is created using only recyclable natural materials (wood, cotton, glass), produced within the EU.

The Kingdom Line tents are adaptable in size, color, material, and form – customers are invited to choose custom-made graphics or printed logos.



# THE ADVENTURE LINE

## ADVENTURE TENT



# ADVENTURE TENT



Within the quality standards of our products and our vision in the development process, we designed a luxury glamping tent of a new generation. Developed together with leading engineers in tent construction, our products are sustainable, rigid and spacious, offering guests unique living experiences with the discreetly faded lines between indoor and outdoor worlds, resulting in a close connection with nature.

From the chassis rises, a wooden structure made of colored spruce circular turned B - lama connected by hot-dip galvanized iron joints. The canvas of the housing module is attached to the wooden structure with an innovative patented technique, giving the tent a unique final product look.



# MATERIAL & DURABILITY

We strive to find world-class materials and combine them with the best fabric technology available to secure proper wind resistance, protection from the sun, and durability.

## **CLT – CROSS LAMINATED TIMBER WOOD CONSTRUCTION**

The state-of-the-art self-supporting construction frame features no metal pieces, as it is made of wood (CLT – Cross Laminated Timber Wood) to avoid corrosion and prolong the tent's lifespan while making sure the set-up is very easy and fast, taking no longer than 2 days. It is also highly resistant to unfavorable weather conditions, even the strong 120 km/h winds.

## **TERRACE**

Outside, there is a spacious solid wood terrace, available with an optional shade sail to provide more shade and privacy. Flooring, made of CLT plates, can be then covered with vinyl or a carpet. Upon request, the deck can be equipped with stylish outdoor furniture, such as a table with chairs or an outdoor sofa/beanbags. The terrace is also perfect for small pool options or a jacuzzi.

## **WINDOWS**

Windows come optionally equipped with curtains and insect nets, however, it is also possible to place a divider curtain in the living room to secure more privacy or some extra space.

## **PLATFORM**

The platform is supported by buzzons, adjustable pedestals for outdoor raised flooring, which make the deck horizontally even when setting it up on uneven terrain. Included are also steps, manufactured from solid wood.

## **SATTLER CANVAS**

The exterior of the tent is created with bright colours colors, however, customers can choose between various colors of the top-quality canvas, supplied by the renowned Sattler company. The exterior canvas is used to manufacture the roof (fire-resistant PVC material, light tent

matt, 600 g), while the walls and the ceiling are created with materials, best fitted for the interior. Sattler material is known for its extensive FR-certifications, usable in European as well as Anglo-American regions, aesthetic colours colors, suitable for sun- & weather protection as well as industrial applications, high-glossy surface sealing, which renders a very nice visual appearance and excellent cleanability. Moreover, Bedouin's unique solution, combining the roof and the ceiling, adds significantly to maintaining lower temperatures inside the tent during long hot summer days. You can opt for the fabric colour of your choice, as well for printed graphics or a logo.

## FABRICS COLOUR OPTIONS



The exterior canvas is used to manufacture the roof (fire-resistant PVC material, light tent matt, 600 g), while the walls and the ceiling are created with materials, best fitted for

the interior. Sattler material is known for its extensive FR-certifications, usable in European as well as Anglo-American regions, aesthetic colors, suitable for sun & weather protection

as well as industrial applications, high-glossy surface sealing, which renders a very nice visual appearance and excellent cleanability.





# SELECTION OF MATERIALS

## FURNITURE FABRICS



Michelangelo 50964-06



Michelangelo 50964-10

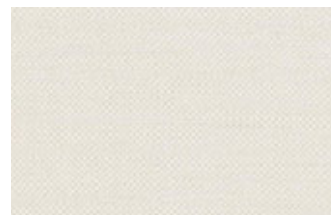


Michelangelo 50964-14



Michelangelo 50964-22

## COURTAIN FABRICS



Mercis Illusion 02



Mercis Illusion 04

**DIVERSIFIED TESTING LABORATORY, INC.**  
WORLDWIDE SERVICE

306 WEST FRONT STREET  
PO BOX 4004  
BURLINGTON, NORTH CAROLINA 27215  
PHONE: (336) 227-7750 • FAX: (336) 227-1175  
www.diversifiedtestinglabs.com

January 5, 2017

Ms. Barbara Ferrari  
PARA S.p.A.  
Viale Monza, 1  
20845 Sovico (MB) Italy

Reference: Laboratory Test Report  
Lab Identification No. 23081  
Invoice No. 54229

Dear Ms. Ferrari:

One (1) fabric sample, identified as **TEMPOTEST STAR FR**, was received and tested in accordance with the National Fire Protection Association No. 701, "Standard Methods of Fire Tests for Flame Propagation of Textiles and Films, 2015 Edition, (Test 1, Small Scale)". The results are as follows:

Specimen Number	Test Results	
	Residual Flame (seconds)	Weight Loss (percent)
1	0.0	14.86
2	0.0	2.83
3	0.0	7.01
4	0.0	5.82
5	0.0	8.91
6	0.0	7.07
7	0.0	8.96
8	0.0	10.88
9	0.0	11.74
10	0.0	9.53
AVG	0.0	8.76

The sample submitted meets the minimum requirements of the above standard. The average percent weight loss cannot exceed 40% and the weight loss of individual specimens cannot exceed mean value plus three standard deviations. The average residual flame cannot exceed 2.0 seconds.

If there are any questions or when we can be of further assistance, please let us know.

Sincerely,  
  
 Brian S. Dement  
 BSD/mr

OUR LETTERS AND REPORTS ARE FOR THE EXCLUSIVE USE OF THE CLIENT TO WHOM THEY ARE ADDRESSED. ANY COMMUNICATION TO OTHERS OR THE USE OF OUR COMPANY NAME MUST RECEIVE PRIOR APPROVAL. OUR TEST RESULTS APPLY ONLY TO THE SAMPLE TESTED AND ARE NOT GUARANTEES OF THE QUALITY OF ANY OTHERS IDENTICAL OR SIMILAR PRODUCTS. SAMPLES NOT DESTROYED BY TESTING ARE BEYOND A MAXIMUM OF THIRTY DAYS. THE LETTERS, REPORTS OR NAME OF DIVERSIFIED TESTING LABORATORY, INC. MAY NOT BE USED IN ADVERTISING TO THE GENERAL PUBLIC.

### Art. ILLUSION

**SESTAVA:**  
100% POLIESTER

**COMPOSITION:**  
100% POLYESTER

**SIROVINSKI SASTAV:**  
100% POLIESTERSKO VLAKNO

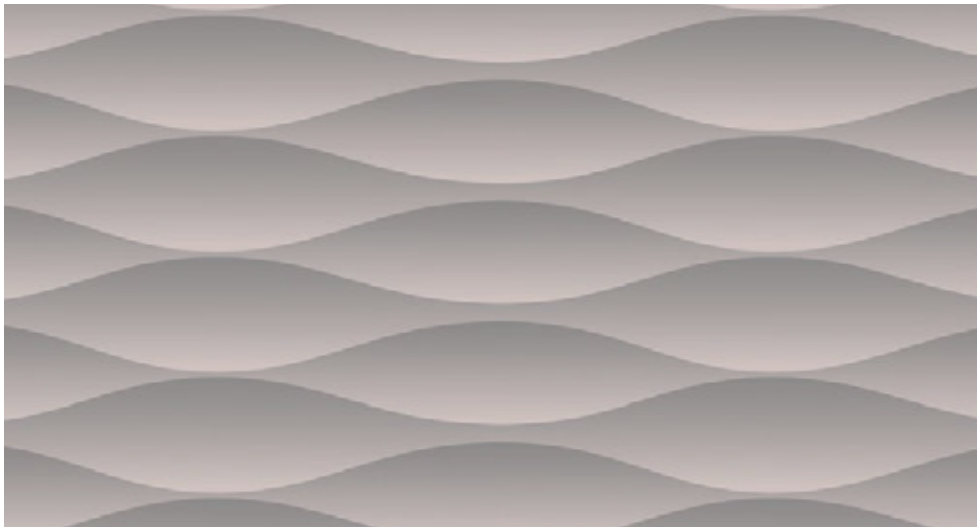
**ZUSAMMENSETZUNG:**  
100% POLYESTER

**COMPOSIZIONE:**  
100% POLIESTERE

**ŠIRINA / WIDTH / ŠIRINA / BREITE / ALTEZZA: 300 cm**  
**TEŽA / WEIGHT / TEŽINA / GEWICHT / PESO: 153 gr/m<sup>2</sup>**

Širina / Width / Breite / Altezza

# FURNITURE BOARDS PATTERNS



# REFERENCES

## EVIA LIFE RESORT, COSTA RICA

GreenStar is a franchisor of the EVIA Life Resort in Costa Rica.

[www.evialiferesort.com](http://www.evialiferesort.com)



Pick your own fruit from the tree, immerse yourself in intimacy at the yoga resort, watch and listen to the birds in the treetops, relax in your own pool villa and stay connected to the local community.



EVIA Life Resort presents a new authentic concept of luxury, connecting us back to the earth. Live your tropical dream in the middle of the jungle on the Caribbean coast of Costa Rica.

# REFERENCES

## OBLUN ECO RESORT, MONTENEGRO

[www.oblun.com](http://www.oblun.com)



Oblun Eco Glamping Resort in Montenegro.

## THE AL KHOR VILLAGE PROJECT, QATAR



The Bedouin tent with masterfully selected color tones and materials as well as its unique design, seamlessly merges with its natural surroundings.



Setting the Villa tents next to one another will create a picturesque first-class lane that the guests will love to return to and enjoy.



## GREEN STAR COMPANY

We are an innovative multidisciplinary team of experts from the textile industry, wood industry, construction, sailing, and modern design. We have joined our areas of expertise and can now offer unique solutions in the field of luxury accommodation.

Our team designs and manufactures custom made and environmentally sustainable luxury glamping tents. We provide accommodation for guests who desire to leave a low impact on the environment. All the materials used for the manufacturing process are produced in the EU, guaranteeing the highest quality and come with environmental certificates. Each glamping resort is designed according to our client's wishes with the help of our knowledge and innovative solutions.



## EXTERIOR

The entire tent construction is made of wood and covered with technical textile with natural appearance and colors, impeccably suited for open-air living. The flexibility of the material enables the unique shape of the tent's roof. Three glass walls offer the ultimate glamping experience, where stunning nature meets modern luxury.

## INTERIOR

The entire back wall and inner roof are made of cotton fabric, ensuring the tent's climate feels as natural as possible. Privacy is provided by long and elegant curtains. The exquisitely designed furniture, along with carefully selected natural colors, will make any guest feel homely and cosy.



## TURNKEY SOLUTIONS

We carry out our projects from A to Z, on a "Turnkey" basis.

GreenStar is a franchisor of the GAIA Luxury Resort in Puerto Vieho in Costa Rica.

All project are designed by Robert Klun Architects & Magnet Design.

[www.green-star.luxury](http://www.green-star.luxury)



At Rober Klun Architects we create ambients, business, public, private, hospitality, etc.

Rober Klun Architects was born from Klun Ambienti, a family-run company with 40 years' tradition in upholstered furniture production and many notable references under their scissors. With a growing need

for project-oriented approach to upholstery furnishing jobs and a growing demand for a comprehensive service on projects, a unique design and planning team was formed - Rober Klun Architects.

At Rober Klun Architects, our clients are offered complete support in creating spaces. Together with our

partners we can work with you from concept to the champagne. We can join you on your project at any time – at the design and planning stage as architects or at the execution stage as providers of first class builders' and craftsmen's services and as supplier of top quality interior finishes and furnishings. Our field of expertise lies

in architecture and interior design. We provide project idea development, consulting and execution.

Our goal is to make your experience in creating your environment as simple and as pleasant as possible. Go about your business, let us design your life.







Represented by:



TW CONSULTING  
& TRADE LTD.



TWERASER TRADING FZ-LLC

Wolfgang Tweraser

CEO/President

Tel EU: +356 9942 9829

Tel UAE: +971 50 209 3055

wolfgang@TWCTMT.com

www.TWCTMT.com