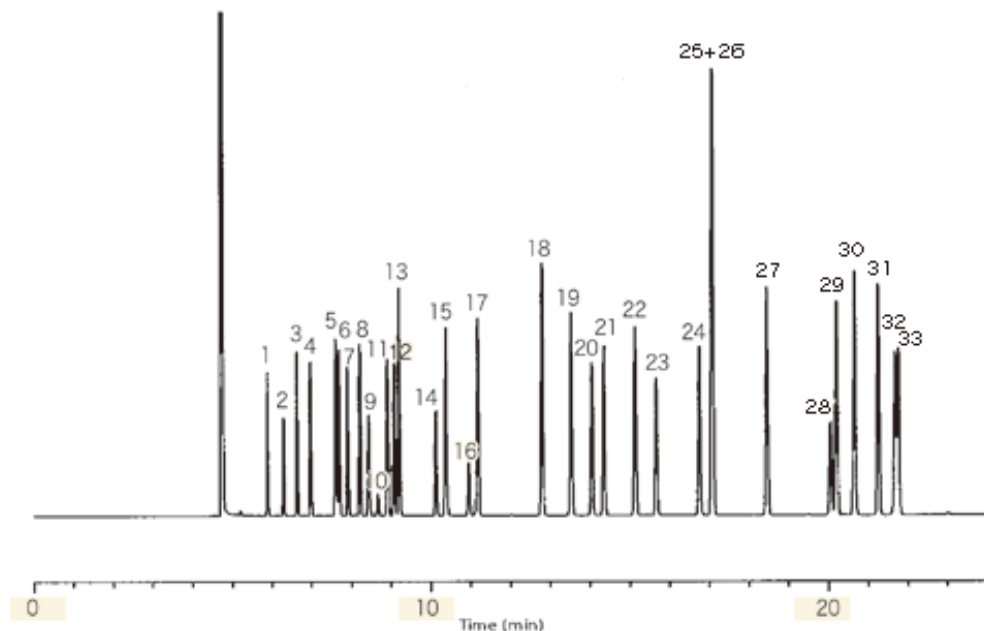


# InertSearch™ for GC

InertCap® Applications

## Halocarbons

Data No. GA030-0000



System	: GC/FID	Solutes : 1. 1,1-Dichloroethene	26. p-Xylene
Column	: InertCap AQUATIC 0.25mmI.D.×60m df=1.0µm	2. Methylenechloride	27. o-Xylene
Column Temp.	: 60°C →4°C/min→150°C	3. t-1,2-Dichloroethene	28. Bromoform
Carrier Gas	: He 200kPa	4. 1,1-Dichloroethane	29. 1,1,2,2-Tetrachloropropane
Injection	: Split 1 : 80 0.1µL	5. 2,2-Dichloropropane	30. 1,2,3-Trichloropropane
Detection	: FID	6. c-1,2-Dichloroethene	31. Bromobenzene
Sample	: Halogenated hydrocarbons each 5mg/L	7. Chloroform	32. m-Chlorotoluene
		8. Bromochloromethane	33. p-Chlorotoluene
		9. 1,1,1-Trichloroethane	
		10. 1,1-Dichloropropene	
		11. Carbontetrachloride	
		12. 1,2-Dichloroethane	
		13. Benzene	
		14. Trichloroethene	
		15. 1,2-Dichloropropane	
		16. Bromodichloromethane	
		17. Dibromomethane	
		18. Toluene	
		19. 1,1,2-Trichloroethane	
		20. 1,3-Dichloropropane	
		21. Tetrachloroethene	
		22. Dibromochloromethane	
		23. 1,2-Dibromoethane	
		24. Chlorobenzene	
		25. m-Xylene	