

A two-story brick house with a stone-arched entrance, bay windows, and dormers. The house features a central dark blue door with a stone arch above it. On either side of the door are large bay windows. The upper floor has three dormer windows and three double-hung windows. The house is surrounded by a stone-paved walkway and two large evergreen trees in planters.

29 ROSEDALE HEIGHTS DRIVE

MOORE PARK



WHERE ELEGANCE MEETS FAMILY LIVING IN THE HEART OF MOORE PARK

MAIN FLOOR

Step into a timeless centre hall plan home, serenely tucked into a quiet cul-de-sac in the coveted neighborhood of Moore Park.

29 Rosedale Heights Drive seamlessly combines classic design with elevated, contemporary living – offering over 4,700 square feet of beautifully-renovated space, surrounded by a canopy of mature trees and lush landscaping.

With exquisite attention to detail and premium finishes throughout, this is a residence that truly invites you to live and entertain effortlessly.

The bright foyer is adorned with wainscoting and crown moulding, leading to an airy living room with a large bay window that fills the space with natural light. A sleek two-way fireplace connects the living room and the transitional family room, where French doors open onto a beautifully landscaped backyard.

The modern eat-in kitchen is designed for culinary excellence, featuring top-of-the-line chef's appliances including a Sub-Zero fridge, Viking stove, Viking range hood, Viking microwave and a new Miele dishwasher. A perfect butler's pantry seamlessly transitions into the dining room, offering additional prep and storage space for all your entertaining needs.

French doors from the breakfast room extend to a dreamy private backyard oasis with a built-in BBQ, fully enclosed gazebo, and a jungle gym – ideal for both relaxed family gatherings and vibrant summer entertaining.

A serene dining room with an expansive window and wainscoting throughout completes the thoughtfully-designed and stylish main floor, offering an elevated backdrop for memorable dinners and celebrations.

SECOND FLOOR

Ascending to the second floor we are greeted with gleaming hardwood floors leading to three perfectly-positioned bedrooms dedicated to rest and relaxation.

The expansive primary suite is a sanctuary of comfort and tranquility, featuring a serene five-piece spa-inspired ensuite, a walk-in closet with a centre island and French doors opening to a Juliette balcony overlooking the treed backyard. A separate set of French doors with additional balcony space enhances the indoor-outdoor connection and bathes this primary retreat with an abundance of light.

Two additional generous bedrooms, one with a Juliette balcony, are complemented by a beautifully appointed four-piece bathroom, creating a perfect floor plan for families seeking comfort and elegance.

THIRD FLOOR

The third floor continues the cohesive and elegant design throughout the home, offering remarkable flexibility with two additional bedrooms, each complete with built-in shelving and broadloom flooring. Ideal for children's bedrooms, a play room, a guest suite or home office, this floor offers a space for everyone that is functional yet elegant. A charming three-piece bathroom rounds out the offerings in this exceptional space.

LOWER LEVEL

The fully-finished lower level extends the living space dramatically. A combined recreation and media room with a stunning floor-to-ceiling gas fireplace provides the ideal spot for cosy movie nights or family gatherings. An adjoining spectacular windowed 3,500-bottle wine cellar will impress even the most discerning collectors, adding to this sophisticated living space.

An additional bedroom and full bathroom provide excellent flexibility for in-law, nanny, or guest accommodations, alongside a spacious laundry room, a walk-in closet and abundant storage.

EXTERIOR & OUTDOOR SPACE

Smoothly transitioning from the elegant interiors, 29 Rosedale Heights Drive offers an outdoor oasis that is truly an extension of the home's gracious interior.

The private, south-facing backyard is a lush retreat, featuring mature trees, a fully enclosed gazebo, a built-in BBQ and a jungle gym. The fully-landscaped grounds offer areas for both entertainment and quiet enjoyment of this tranquil oasis in the city.

The home is ideally situated in the catchment for top-rated schools including Whitney Public School and Our Lady of Perpetual Help School, as well as being in close proximity to private schools such as Branksome Hall, The Bishop Strachan School and Upper Canada College. Moore Park is known for its easy access to extensive walking trails and beautiful ravines, as well as a short walk to nearby shops and restaurants. Closely located to major transit routes, this home quietly offers the perfect urban lifestyle in a tranquil setting.







KEY FEATURES

- Over 4,700 square feet of luxurious living space
- Renovated throughout with elevated, timeless finishes
- Bright centre hall plan with classic wainscotting and crown mouldings
- Gourmet eat-in kitchen with premium appliances and French door walkout
- Two-way fireplace between living room and family room
- Primary suite with spa-like ensuite, walk-in closet, and Juliette balcony
- Finished lower level with recreation/media room, wine cellar, bedroom, laundry
- Landscaped private backyard with built-in BBQ, gazebo, and jungle gym
- Quiet cul-de-sac location in the heart of Moore Park

INCLUSIONS

- Stainless steel Sub-Zero fridge
- Viking range and range hood
- Viking microwave
- Brand new Miele dishwasher
- Full-size LG washer and dryer (2021)
- All electric light fixtures
- All heating and air conditioning equipment
- Outdoor jungle gym

LOT SIZE

- 50 Feet x 90 Feet

POSSESSION

- 30-60 Days | Flexible

TAXES

- \$20,979.00 (2024)

HEATING

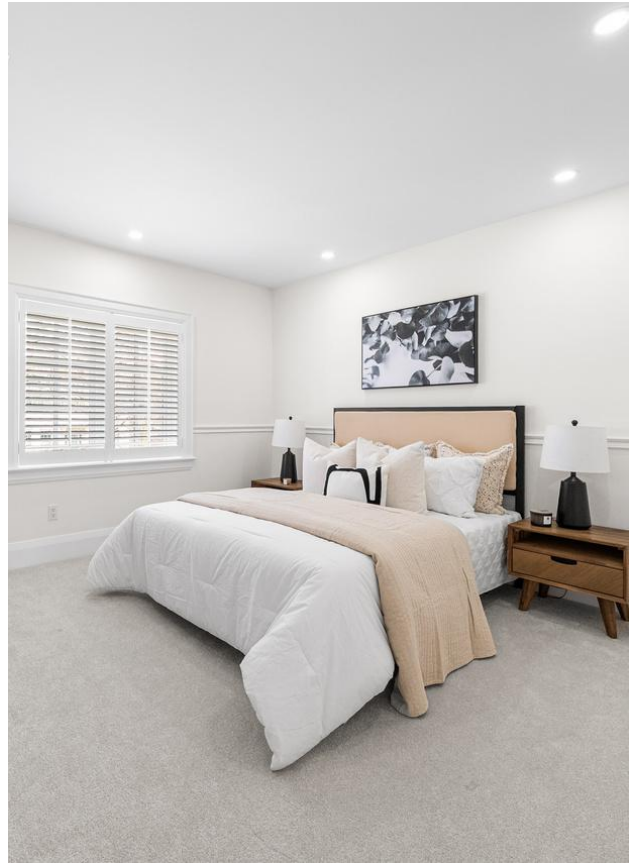
- Forced Air, Gas

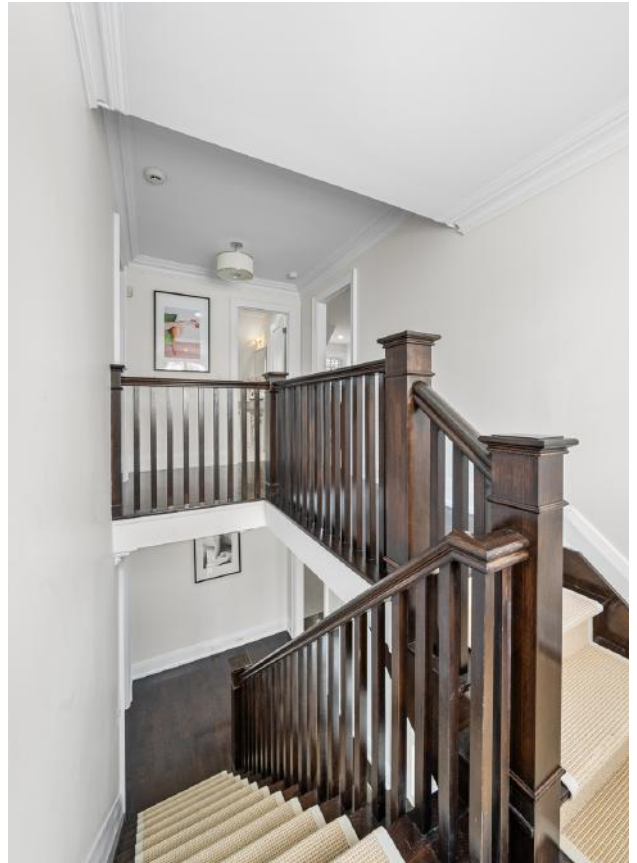
COOLING

- Central Air Conditioning

PARKING

- Private Drive
- Attached Garage
- 3 total parking spaces

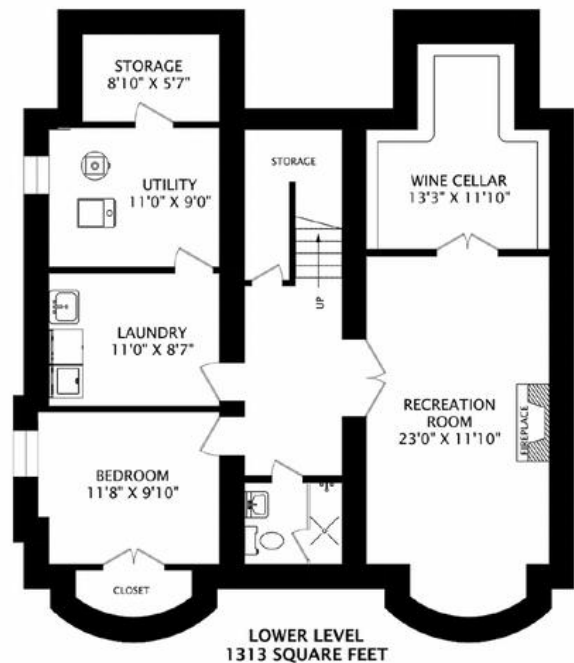
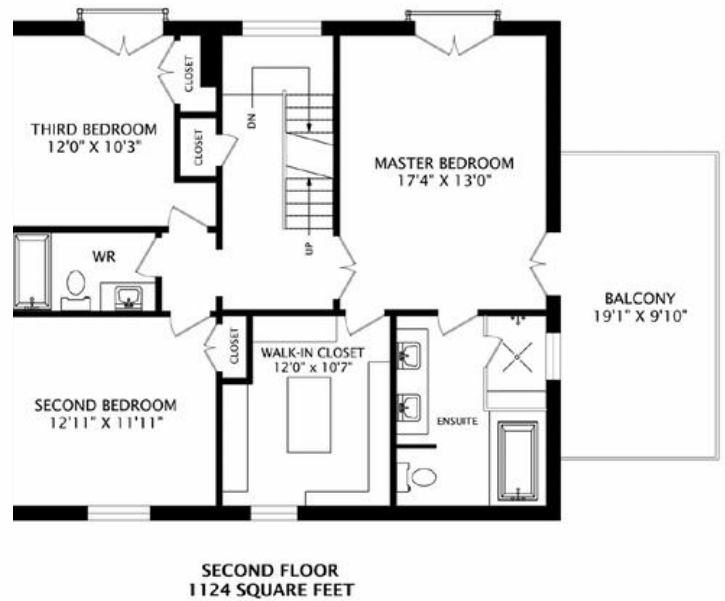
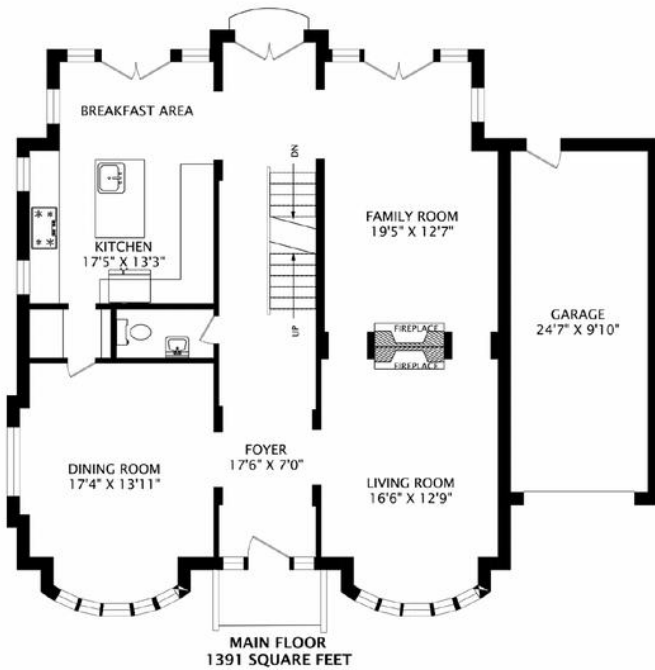






29 ROSEDALE HEIGHTS DRIVE

Floor Plans





ELEVATE YOUR EXPECTATIONS



Cailey Heaps
President & CEO
416.424.4910
cailey@heapsestrin.com



Megan Till-Landry
Real Estate Agent
416.886.2491
megan@heapsestrin.com



For Royal LePage Real Estate Services Heaps Estrin Team, Brokerage. All information and statements contained herein, provided by Royal LePage Real Estate Services Heaps Estrin Team, Brokerage regarding property for sale, rental or financing is from sources deemed reliable and assumed correct, but no warranty or representation is made as to the accuracy thereof and same is submitted subject to errors, omissions, changes in price, rental or other conditions, prior sale or withdrawal without notice.

Royal LePage Real Estate Services Heaps Estrin Team, Brokerage Independently Owned and Operated