

# SURFACE

★★★★★  
**NAXOS**<sup>®</sup>  
C E R A M I C H E  
F I N C I B E C G R O U P



Concept	p.	02
Fog . Canvas	p.	06
Fog . Talc	p.	12
Talc	p.	18
Ash . Talc	p.	24
Breeze . Talc	p.	30
Caramel	p.	38

---

# INDICE

## INDEX

# VIVERE LIVE THE UN'EMOZIONE EMOTION

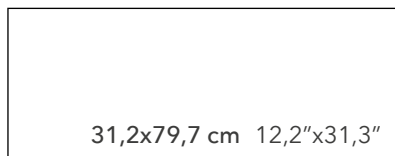
La collezione Surface interpreta un nuovo concetto di decorazione, basato sulle strutture e sui contrasti di luminosità che si possono creare attraverso le tante finiture che la materia ceramica consente. La bellezza di Surface nasce dalla vicinanza di spazi lucidi e opachi, brillanti e madreperlacei, vicendevolmente sottolineati dalla luce che si rifrange sulle lastre. I decori sublimano le colorazioni di tendenza all'interno di composizioni geometriche anche tridimensionali, mosaici, muretti, disegni stilizzati di forme naturali, per comporre pareti eleganti, sobrie e raffinate.

The Surface collection interprets a decor concept based on the structures and contrasts of light created on the many finishes of ceramic surfaces. The beauty of Surface derives from the proximity of polished or matt, shiny or mother of pearl spaces, mutually emphasised by the light reflecting on the slabs. The decor exalts the trendy colours inside the geometric compositions, including three-dimensional, mosaic, walls, stylised designs with a natural shape, to compose elegant, sober and refined walls.

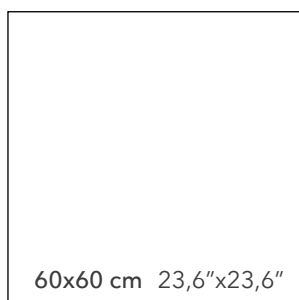


# SURFACE

**FORMATO SIZE**

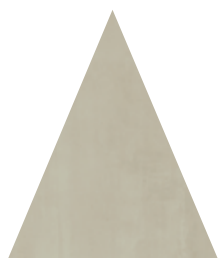


**Rivestimenti in pasta bianca**  
White body wall tiles

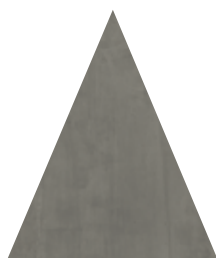


**Pavimenti in gres fine porcellanato**  
Fine porcelain stoneware floor tiles

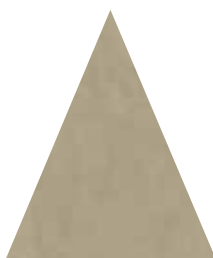
**COLORI COLOURS**



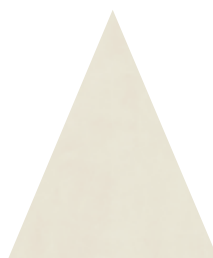
Ash



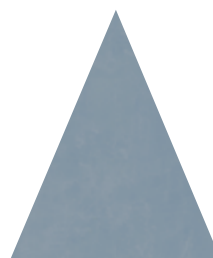
Fog



Caramel



Canvas



Breeze



Talc

**SUPERFICIE: NATURALE SURFACE: NATURAL**

**BORDO: RETTIFICATO EDGE: RECTIFIED**



# SURFACE



FOG

CANVAS





KARIOCCA





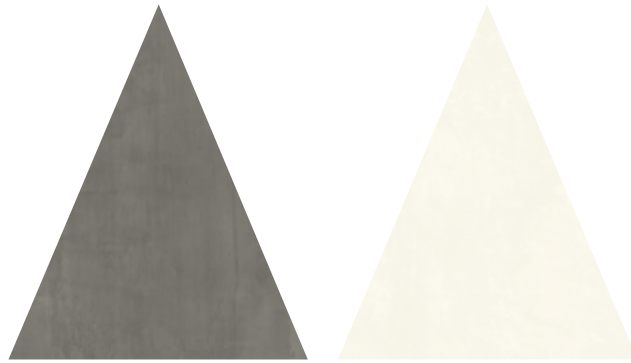
Ambiente realizzato con: Fog 31,2x79,7 - Canvas 31,2x79,7 - Karioca 31,2x79,7 - Canvas 60x60 pav.  
Setting realized with: Fog 31,2x79,7 - Canvas 31,2x79,7 - Karioca 31,2x79,7 - Canvas 60x60 pav.







# SURFACE



FOG

TALC



UNEVER



Ambiente realizzato con: Talc 31,2x79,7 - Fog 31,2x79,7 - Unever Talc 31,2x79,7 - Pannello Pitagora - Fog 60x60 pav.  
Setting realized with: Talc 31,2x79,7 - Fog 31,2x79,7 - Unever Talc 31,2x79,7 - Pannello Pitagora - Fog 60x60 pav.







# SURFACE







TALC



ELIX







Ambiente realizzato con: Talc 31,2x79,7 - Elix Talc 31,2x79,7 - Canvas 60x60 pav.  
Setting realized with: Talc 31,2x79,7 - Elix Talc 31,2x79,7 - Canvas 60x60 pav.



# SURFACE







ASH

TALC



BRILL





Ambiente realizzato con: Ash 31,2x79,7 - Talc 31,2x79,7  
Fascia Bril Talc 31,2x79,7 - Unever Ash 31,2x79,7 - Matita Bril Silver 0,5x79,7 - Ash 60x60 pav.  
Setting realized with: Ash 31,2x79,7 - Talc 31,2x79,7  
Fascia Bril Talc 31,2x79,7 - Unever Ash 31,2x79,7 - Matita Bril Silver 0,5x79,7 - Ash 60x60 pav.



# SURFACE







BREEZE

TALC





NINEEA



Ambiente realizzato con: Breeze 31,2x79,7 - Talc 31,2x79,7 - Fascia Ninfea 31,2x79,7 - Modulo Breeze 31x48 - Ash 60x60 pav.  
Setting realized with: Breeze 31,2x79,7 - Talc 31,2x79,7 - Fascia Ninfea 31,2x79,7 - Modulo Breeze 31x48 - Ash 60x60 pav.





# SURFACE





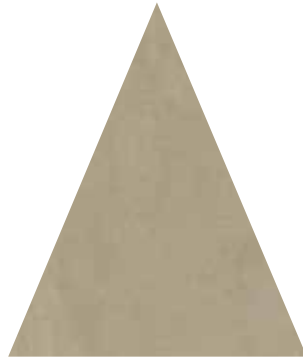




Ambiente realizzato con: Breeze 31,2x79,7  
Setting realized with: Breeze 31,2x79,7







CARAMEL





# MODULO





Ambiente realizzato con: Caramel 31,2x79,7 - Modulo Canvas 31x48 - Elix Canvas 31,2x79,7 - Caramel 60x60 pav.  
Setting realized with: Caramel 31,2x79,7 - Modulo Canvas 31x48 - Elix Canvas 31,2x79,7 - Caramel 60x60 pav.

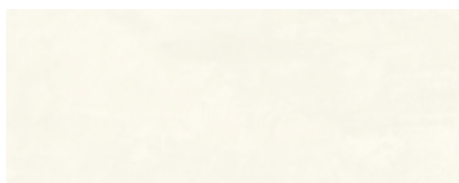




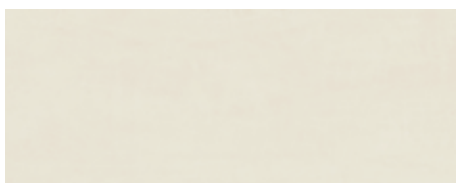


# SURFACE

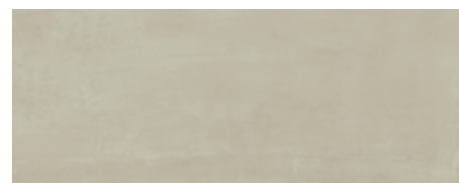
Rivestimenti in pasta bianca rettificati White body wall tiles rectified



31,2x79,7  
93348 TALC  
■ 129



31,2x79,7  
93351 CANVAS  
■ 129



31,2x79,7  
93353 ASH  
■ 129



31,2x79,7  
93363 UNEVER TALC  
■ 135



31,2x79,7  
93364 UNEVER CANVAS  
■ 135



31,2x79,7  
93365 UNEVER ASH  
■ 135



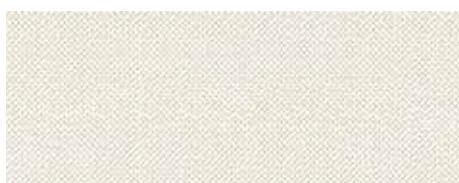
31,2x79,7  
93366 ELIX TALC  
■ 135



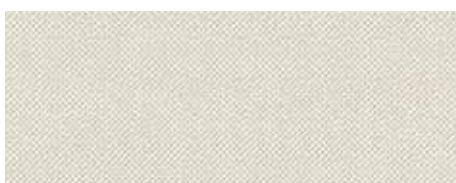
31,2x79,7  
93367 ELIX CANVAS  
■ 135



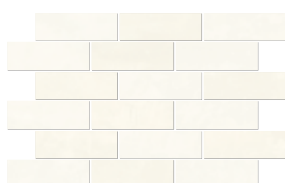
31,2x79,7  
93370 ELIX ASH  
■ 135



31,2x79,7  
94397 FASCIA BRIL TALC  
● 117



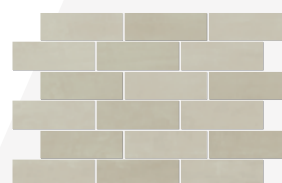
31,2x79,7  
94398 FASCIA BRIL CANVAS  
● 117



31x48  
94382 MODULO TALC  
● 64

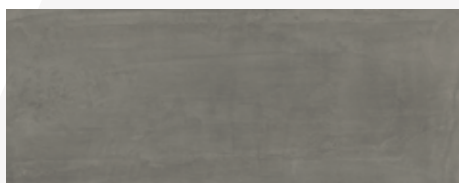


31x48  
94383 MODULO CANVAS  
● 64



31x48  
94385 MODULO ASH  
● 64

Rivestimenti in pasta bianca rettificati White body wall tiles rectified



31,2x79,7  
 93352 FOG  
 ■ 135



31,2x79,7  
 93354 BREEZE  
 ■ 135



31,2x79,7  
 93356 CARMEL  
 ■ 135



31,2x79,7  
 94399 FASCIA BRIL FOG  
 ● 117



0,5x79,7  
 95003 MATITA BRIL GOLDEN  
 ● 52



0,5x79,7  
 95004 MATITA BRIL SILVER  
 ● 52



31x48  
 94384 MODULO FOG  
 ● 64



31x48  
 94386 MODULO BREEZE  
 ● 64



31x48  
 94388 MODULO CARMEL  
 ● 64



# SURFACE

Decorì Decors



31,2x79,7

94396 FASCIA NINFEA

● 174



31,2x79,7

93371 KARIOCA

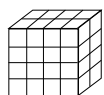
■ 135



95338 PANNELLO SURFACE SU ORDINAZIONE / ON DEMAND

■ 225

Pesi e imballi rivestimento  
Wall tile weights and packaging



	31,2x79,7	31x48	Karioca 31.2X97.7	Elix/Unever 31,2x79,7	Fascia 31,2x79,7	Matita 0,5x79,7
Pc.	5	5	5	4	2	4
M <sup>2</sup>	1,243	0,74	1.243	0,99	0,49	-
Kg	20	11,95	19.8	16,5	8,66	0,46
Colli boxes	40	-	40	40	-	-
M <sup>2</sup>	49,72	-	49,72	39,8	-	-
Kg	800	-	792	660	-	-



ANSI A 137.1  
DCOF  
WET > 0,42

B.C.R.A.  
D.M.I. n. 236 μ=0,4  
μ > 0,4

C5



Pavimenti in gres fine porcellanato rettificati Fine porcelain stoneware floor tiles rectified



60x60  
94373 CANVAS  
■ 105



60x60  
94374 FOG  
■ 105

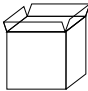
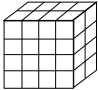


60x60  
94375 ASH  
■ 105



60x60  
94376 CARMEL  
■ 105

**Pesi e imballi pavimento**  
Floor tile weights and packaging

	60x60	
	Pc.	3
	M <sup>2</sup>	1,08
	Kg	22,5
	Colli boxes	40
	M <sup>2</sup>	43,2
	Kg	900

**Note Notes**

I PRODOTTI POSSONO ESSERE MODIFICATI DA FINCIBEC SENZA PREAVVISO, RESPINGENDO OGNI RESPONSABILITÀ SU POSSIBILI DANNI DIRETTI O INDIRETTI CAUSATI DA POTENZIALI MODIFICHE. FINCIBEC RESERVES THE RIGHT TO MODIFY ITS PRODUCTS WITHOUT PRIOR NOTICE AND CANNOT BE HELD LIABLE FOR DIRECT OR INDIRECT DAMAGE CAUSED BY SUCH MODIFICATIONS.

VERIFICARE SEMPRE LA CORRETTEZZA DELLE INFORMAZIONI E DEI DATI RELATIVI A CODICI, IMBALLAGGI E PESI, CONSULTANDO IL LISTINO PREZZI IN VIGORE. ALWAYS REFER TO THE PRICE LIST IN FORCE TO ENSURE CORRECT INFORMATION AND DATA ON CODES, PACKAGING, AND WEIGHT.

LE TONALITÀ DEI COLORI RIPORTATE NEL CATALOGO SONO INDICATIVE THE COLOURS SHADES, REPORTED ON THE CATALOGUE, ARE INDICATIVE.

**Categorie d'impiego per pavimenti in gres fine porcellanato**  
Use classes for fine porcelain stoneware floors

**C1**

PIASTRELLE DA PAVIMENTO CONSIGLIATE PER CALPESTIO LEGGERO  
FLOOR TILES RECOMMENDED FOR LIGHT TRAFFIC

**C2**

PIASTRELLE DA PAVIMENTO CONSIGLIATE PER CALPESTIO MEDIO-LEGGERO  
FLOOR TILES RECOMMENDED FOR MEDIUM-LIGHT TRAFFIC

**C3**

PIASTRELLE DA PAVIMENTO CONSIGLIATE PER CALPESTIO MEDIO  
FLOOR TILES RECOMMENDED FOR MEDIUM TRAFFIC

**C4**

PIASTRELLE DA PAVIMENTO CONSIGLIATE PER CALPESTIO MEDIO-PESANTE  
FLOOR TILES RECOMMENDED FOR MEDIUM-HEAVY TRAFFIC

**C5**

PIASTRELLE DA PAVIMENTO CONSIGLIATE PER CALPESTIO INTENSO  
FLOOR TILES RECOMMENDED FOR HIGH TRAFFIC USES

**Variazioni cromatiche**  
Colour variations



V1 ASPETTO UNIFORME  
EVEN APPEARANCE



V2 LIEVE VARIAZIONE  
LIGHT VARIATION




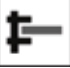














V3 MEDIA VARIAZIONE  
MEDIUM VARIATION



V4 INTENSA VARIAZIONE  
STRONG VARIATION

È INDISPENSABILE ALL'ATTO DELLA POSA, PRELEVARE LE PIASTRELLE DA PIÙ CONFEZIONI. IT IS NECESSARY TO TAKE THE TILES FROM SEVERAL DIFFERENT BOXES WHEN LAYING THEM.

**CARATTERISTICHE TECNICHE**  
**TECHNICAL SPECIFICATIONS - TECHNISCHE EIGENSCHAFTEN - CARACTÉRISTIQUES TECHNIQUES - CARACTERÍSTICAS TÉCNICAS - ТЕХНИЧЕСКИЕ ХАРАКТЕРИСТИКИ**  
**STANDARDS : UNI EN 14411 ANNEX L - BIII / UNI EN ISO 13006 ANNEX L - BIII**

CARATTERISTICHE TECNICHE TECHNICAL DATA TECHNISCHE DATEN CARACTÉRISTIQUES TECHNIQUES CARACTERÍSTICAS TÉCNICAS ТЕХНИЧЕСКИЕ ХАРАКТЕРИСТИКИ	TIPO DI PROVA STANDARD OF TEST NORME DU TEST TESTNORM TIPO DE PRUEBA ТИП ТЕСТА	VALORI PRESCRITTI DALLE NORME INTERNATIONAL STANDARDS INTERNATIONALE NORMWERTE VALEURS PREVUES PAR LES NORMES VALORES PREVISTOS POR LAS NORMAS ПРЕДУСМОТРЕННЫЕ СТАНДАРТОМ		VALORE MEDIO NAXOS NAXOS AVERAGE VALUE NAXOS MITTELWERT VALEURS MOYEN NAXOS VALOR MEDIO NAXOS СРЕДНЕЕ ЗНАЧЕНИЕ NAXOS	
		REQUIREMENTS FOR NOMINAL SIZE N			
CARATTERISTICHE DIMENSIONALI - SIZE CHARACTERISTICS MASSEIGENSCHAFTEN - DETERMINATION DES CARACTÉRISTIQUES DIMENSIONNELLES CARACTERÍSTICAS DIMENSIONALES - РАЗМЕРНЫЕ ХАРАКТЕРИСТИКИ		7 cm ≤ N < 15 cm	N ≥ 15 cm	NAT	
 LATI - SIDES - SEITEN COTES - CANTOS РАЗМЕРЫ СТОРОН	EN ISO 10545-2	± 0,75 mm	± 0,5 % (± 2,0 mm)	CONFORME COMPLYING - ERFÜLLT CONFORME - CONFORME СООТВЕТСТВУЕТ	
 SPESSORE THICKNESS - DICKE ÉPAISSEUR - ESPESOR ТОЛЩИНА	EN ISO 10545-2	± 0,5 mm	± 10 % (± 0,5 mm)	CONFORME COMPLYING - ERFÜLLT CONFORME - CONFORME СООТВЕТСТВУЕТ	
 RETTILINEITÀ DEGLI SPIGOLI STRAIGHTNESS OF SIDES - GERADLINIGKEIT DER KANTEN RECTITUDE DES ARETES - RECTIDUD DE LOS CANTOS - КОСОУГОЛЬНОСТЬ	EN ISO 10545-2	± 0,5 mm	± 0,3% (± 1,5 mm)	CONFORME COMPLYING - ERFÜLLT CONFORME - CONFORME СООТВЕТСТВУЕТ	
 ORTOGONALITÀ RECTANGULARITY - RECHTWINKLIGKEIT PERPENDICULARITÉ - ORTOGONALIDAD КРИВИЗНА СТОРОН	EN ISO 10545-2	± 0,75 mm	± 0,5% (± 2,0 mm)	CONFORME COMPLYING - ERFÜLLT CONFORME - CONFORME СООТВЕТСТВУЕТ	
 PLANARITÀ SURFACE FLATNESS - EBENFLÄCHIGKEIT PLANEITE DE SURFACE - PLANEIDAD КРИВИЗНА ЛИЦЕВОЙ ПОВЕРХНОСТИ	EN ISO 10545-2	CENTRE CURVATURE	+ 0,75 mm - 0,5 mm	+ 0,5% (+2,0 mm) - 0,3% (-1,5 mm)	CONFORME COMPLYING - ERFÜLLT CONFORME - CONFORME СООТВЕТСТВУЕТ
EDGE CURVATURE		+ 0,75 mm - 0,5 mm	+ 0,5% (+2,0 mm) - 0,3% (-1,5 mm)		
WARPAGE		+ 0,75 mm	± 0,5% (±2,0mm)		
 ASSORBIMENTO D'ACQUA WATER ABSORPTION - WASSERAUFNAHME ABSORPTION D'EAU - ABSORCIÓN DE AGUA ВОДОПОГЛОЩЕНИЕ	EN ISO 10545-3	E <sub>b</sub> > 10%		10% < E <sub>b</sub> ≤ 20%	
 RESISTENZA ALLA FLESSIONE FLEXION RESISTANCE - BIEGEFESTIGKEIT RESISTANCE A LA FLEXION - RESISTENCIA A LA FLEXIÓN ПРЕДЕЛ ПРОЧНОСТИ ПРИ ИЗГИБЕ	EN ISO 10545-4	> 600 N > 12 N/mm <sup>2</sup> .		CONFORME COMPLYING - ERFÜLLT CONFORME - CONFORME СООТВЕТСТВУЕТ	
 RESISTENZA ALL'URTO IMPACT RESISTANCE - STOSSFESTIGKEIT RESISTANCE AUX CHOCOS - RESISTENCIA A LOS GOLPES УДАРНОСТОЙКОСТЬ	EN ISO 10545-5	VALORE DICHIARATO DECLARED VALUE - ANGEBEBENER WERT VALEUR DÉCLARÉE - VALOR DECLARADO ЗАЯВЛЕННОЕ ЗНАЧЕНИЕ		> 0,6	
 COEFFICIENTE DI DILATAZIONE TERMICA LINEARE COEFFICIENT OF LINEAR THERMAL-EXPANSION - LINEARER WÄRMEAUDEHNUNGSKOEFFIZIENT COEFFICIENT DE DILATATION THERMIQUE LINEAIRE - COEFFICIENTE DE DILATACIÓN TÉRMICA LINEAL - КОЭФФИЦИЕНТ ЛИНЕЙНОГО ТЕРМИЧЕСКОГО РАСШИРЕНИЯ	EN ISO 10545-8	VALORE DICHIARATO DECLARED VALUE - ANGEBEBENER WERT VALEUR DÉCLARÉE - VALOR DECLARADO ЗАЯВЛЕННОЕ ЗНАЧЕНИЕ		α = 6,7x10 <sup>-6</sup> /°C	
 RESISTENZA AGLI SBALZI TERMICI RESISTANCE TO THERMAL SHOCKS - BESTÄNDIGKEIT GEGEN TEMPERATURSCHWANKUNGEN RESISTANCE AUX CHOCOS THERMIQUES - RESISTENCIA A LOS CHOQUES TÉRMICOS СТОЙКОСТЬ К ПЕРЕПАДАМ ТЕМПЕРАТУРЫ	EN ISO 10545-9	TEST SUPERATO SECONDO EN ISO 10545-1 TEST PASSED ACCORDING TO - TEST BESTANDEN NACH - TEXTE DÉPASSÉ SELON - PRUEBA SUPERADA SEGÜN - ИСПЫТАНИЕ ПРОУДИЕНО В СООТВЕТСТВИИ С		NESSUN DANNO NO DAMAGE - KEIN SCHADEN AUCUN DOMMAGE - NINGUN DANO БЕЗ ПОВРЕЖДЕНИЙ	
 DILATAZIONE ALL'UMIDITÀ (IN MM/M) MOISTURE EXPANSION (IN MM/M) - FEUCHTIGKEITSBEDINGTE AUSDEHNUNG (IN MM/M) DILATATION À L'HUMIDITÉ (EN MM/M) - DILATACIÓN CON LA HUMEDAD (EN MM/M) ВЛАЖНОСТНОЕ РАСШИРЕНИЕ (В ММ/М)	EN ISO 10545-10	VALORE DICHIARATO DECLARED VALUE - ANGEBEBENER WERT VALEUR DÉCLARÉE - VALOR DECLARADO ЗАЯВЛЕННОЕ ЗНАЧЕНИЕ		MAX 0,2 mm / m	
 RESISTENZA AI PRODOTTI CHIMICI USO DOMESTICO E ADDITIVI PER PISCINA RESISTANCE TO HOUSEHOLD AND SWIMMING POOL CHEMICAL PRODUCTS - RBESTÄNDIGKEIT GEGEN HAUSHALTSCHEMIKALIEN UND ZUSATZSTOFFE FÜR SWIMMINGPOOLS - RESISTANCE AUX PRODUITS CHIMIQUES USAGE DOMESTIQUE ET ADDITIFS POUR PISCINE - RESISTENCIA A LOS PRODUCTOS QUÍMICOS DE USO DOMÉSTICO Y ADITIVOS PARA PISCINA - СТОЙКОСТЬ К ДЕЙСТВИЮ БЫТОВЫХ ХИМИЧЕСКИХ СРЕДСТВ, ДОБАВКАМ В БАСЕЙНЫ	EN ISO 10545-13	B MIN		CONFORME COMPLYING - ERFÜLLT CONFORME - CONFORME СООТВЕТСТВУЕТ	
 RESISTENZA A BASSE CONCENTRAZIONI DI ACIDI E ALCALI RESISTANCE TO LOW CONCENTRATIONS OF ACIDS AND ALKALI - BESTÄNDIGKEIT BEI NIEDRIGEN KONZENTRATIONEN VON SÄUREN UND LAUGEN - RÉSISTANCE À BASSES CONCENTRATIONS D'ACIDES ET ALCALIS - RESISTENCIA A BAJAS CONCENTRACIONES DE ÁCIDOS Y ALCALIS - СТОЙКОСТЬ К ДЕЙСТВИЮ НИЗКИХ КОНЦЕНТРАЦИЙ КИСЛОТ И ЩЕЛОЧЕЙ	EN ISO 10545-13	VALORE DICHIARATO DECLARED VALUE - ANGEBEBENER WERT VALEUR DÉCLARÉE - VALOR DECLARADO ЗАЯВЛЕННОЕ ЗНАЧЕНИЕ		CONFORME COMPLYING - ERFÜLLT CONFORME - CONFORME СООТВЕТСТВУЕТ	
 RESISTENZA AD ALTE CONCENTRAZIONI DI ACIDI E ALCALI RESISTANCE TO HIGH CONCENTRATIONS OF ACIDS AND ALKALI - BESTÄNDIGKEIT BEI HOHEN KONZENTRATIONEN VON SÄUREN UND LAUGEN - RÉSISTANCE À HAUTES CONCENTRATIONS D'ACIDES ET ALCALIS - RESISTENCIA A ALTAS CONCENTRACIONES DE ÁCIDOS Y ALCALIS - СТОЙКОСТЬ К ДЕЙСТВИЮ ВЫСОКИХ КОНЦЕНТРАЦИЙ КИСЛОТ И ЩЕЛОЧЕЙ	EN ISO 10545-13	VALORE DICHIARATO DECLARED VALUE - ANGEBEBENER WERT VALEUR DÉCLARÉE - VALOR DECLARADO ЗАЯВЛЕННОЕ ЗНАЧЕНИЕ		CONFORME COMPLYING - ERFÜLLT CONFORME - CONFORME СООТВЕТСТВУЕТ	
 RESISTENZA ALLE MACCHIE RESISTANCE TO STAINS - FLECKENBESTÄNDIGKEIT RESISTANCE AUX TACHES - RESISTENCIA A LAS MANCHAS УСТОЙЧИВОСТЬ К ПЯТНООБРАЗОВАНИЮ	EN ISO 10545-14	CLASSE 3 MIN		CONFORME COMPLYING - ERFÜLLT CONFORME - CONFORME СООТВЕТСТВУЕТ	
 CESSIONE DI PIOMBO E CADMIO LEAD AND CADMIUM DISCHARGE - ABGABE VON BLEI UND CADMIUM PERTE DE PLOMB ET CADMIUM - CESIÓN DE PLOMO Y CADMIO ВЫДЕЛЕНИЕ СВИНЦА И КАДМИЯ	EN ISO 10545-15	VALORE DICHIARATO DECLARED VALUE - ANGEBEBENER WERT VALEUR DÉCLARÉE - VALOR DECLARADO ЗАЯВЛЕННОЕ ЗНАЧЕНИЕ		< AL LIMITE DI RILEVAMENTO < THAN INSTRUMENT LIMIT < UNMESSBARES WERT < LIMITE DE L'INSTRUMENT < LIMITE DEL INSTRUMENTO < НА ПРЕДЕЛЕ ОПРЕДЕЛИМОСТИ	

PER I CERTIFICATI SPECIFICI, E VALORI PUNTUALI, CONTATTARE FINCIBEC SPA - FOR SPECIFIC CERTIFICATES AND DATA, CONTACT FINCIBEC S.P.A. - FÜR SPEZIELLE ZERTIFIKATE UND PUNKTWERTE, FINCIBEC S.P.A. KONTAKTIEREN - POUR LES CERTIFICATS SPÉCIFIQUES ET LES VALEURS PONCTUELLES, CONTACTER FINCIBEC S.P.A. - PARA LOS CERTIFICADOS ESPECÍFICOS Y LOS VALORES CONCRETOS, CONTACTE CON FINCIBEC S.P.A. - ВО ВОПРОСАХ СПЕЦИАЛЬНЫХ СЕРТИФИКАТОВ И ПОКАЗАТЕЛЕЙ СВЯЖИТЕСЬ С FINCIBEC SPA.

ESCLUSO PEZZI SPECIALI ED ELEMENTI DECORATIVI  
 WITH THE EXCEPTION OF SPECIAL PIECES AND DECORS - A L'EXCEPTION DE PIÈCES SPÉCIALES ET ÉLÉMENTS DÉCORATIFS - AUSSCHLIEBLICH FORMSTÜCKE UND DEKORTEILE  
 EXCLUIDO PIEZAS ESPECIALES Y ELEMENTOS DECORATIVOS

# CARATTERISTICHE TECNICHE / GRES FINE PORCELLANATO

TECHNICAL SPECIFICATIONS / PORCELAIN STONWARE - TECHNISCHE EIGENSCHAFTEN / FEINSTEINZEUG - CARACTÉRISTIQUES TECHNIQUES / GRÈS FIN CÉRAME CARACTERÍSTICAS TÉCNICAS / GRES FINO PORCELÁNICO - ТЕХНИЧЕСКИЕ ХАРАКТЕРИСТИКИ / МЕЛКОЗЕРНИСТЫЙ КЕРАМОГРАНИТ

STANDARDS : UNI EN 14411 ANNEX G - Bla / UNI EN ISO 13006 ANNEX G - Bla

	CARATTERISTICHE TECNICHE TECHNICAL DATA TECHNISCHE DATEN CARACTÉRISTIQUES TECHNIQUES CARACTERÍSTICAS TÉCNICAS ТЕХНИЧЕСКИЕ ХАРАКТЕРИСТИКИ	TIPO DI PROVA STANDARD OF TEST NORME DU TEST TESTNORM TIPO DE PRUEBA ТИП ТЕСТА	VALORI PRESCRITTI DALLE NORME INTERNATIONAL STANDARDS INTERNATIONALE NORMWERTE NORMES PREVUES PAR LES NORMES VALORES PREVISTOS POR LAS NORMAS ПРЕДУСМОТРЕННЫЕ СТАНДАРТОМ		VALORE MEDIO NAXOS NAXOS AVERAGE VALUE NAXOS MITTELWERT VALEURS MOYEN NAXOS VALOR MEDIO NAXOS СРЕДНЕЕ ЗНАЧЕНИЕ NAXOS
			REQUIREMENTS FOR NOMINAL SIZE N		
			7 cm ≤ N ≤ 15 cm	N ≥ 15 cm	NAT
	CARATTERISTICHE DIMENSIONALI - SIZE CHARACTERISTICS MASSEIGENSCHAFTEN - DETERMINATION DES CARACTERISTIQUES DIMENSIONNELLES CARACTERÍSTICAS DIMENSIONALES - РАЗМЕРНЫЕ ХАРАКТЕРИСТИКИ				
	LATI - SIDES - SEITEN COTES - CANTOS РАЗМЕРЫ СТОРОН	EN ISO 10545-2	± 0,9 mm	± 0,6% (± 2,0 mm)	CONFORME COMPLYING - ERFÜLLT CONFORME - CONFORME COOTBETCTBYET
	SPESSORE THICKNESS - DICKE ÉPAISSEUR - ESPESOR ТОЛЩИНА	EN ISO 10545-2	± 0,5 mm	± 5,0% (± 0,5 mm)	CONFORME COMPLYING - ERFÜLLT CONFORME - CONFORME COOTBETCTBYET
	RETTILINEITÀ DEGLI SPIGOLI STRAIGHTNESS OF SIDES - GERADLINIGKEIT DER KANTEN RECTITUDE DES ARETES - RECTIDUD DE LOS CANTOS - КОСОУГОЛЬНОСТЬ	EN ISO 10545-2	± 0,75 mm	± 0,5% (± 1,5 mm)	CONFORME COMPLYING - ERFÜLLT CONFORME - CONFORME COOTBETCTBYET
	ORTOGONALITÀ RECTANGULARITY - RECHTWINKLIGKEIT PERPENDICULARITÉ - ORTOGONALIDAD КРИВИЗНА СТОРОН	EN ISO 10545-2	± 0,75 mm	± 0,5% (± 2 mm)	CONFORME COMPLYING - ERFÜLLT CONFORME - CONFORME COOTBETCTBYET
	PLANARITÀ SURFACE FLATNESS - EBENFLÄCHIGKEIT PLANEITE DE SURFACE - PLANEDAD КРИВИЗНА ЛИЦЕВОЙ ПОВЕРХНОСТИ	EN ISO 10545-2	± 0,75 mm	± 0,5% (± 2,0 mm)	CONFORME COMPLYING - ERFÜLLT CONFORME - CONFORME COOTBETCTBYET
	ASSORBIMENTO D'ACQUA WATER ABSORPTION - WASSERAUFNAHME ABSORPTION D'EAU - ABSORCIÓN DE AGUA ВОДОПОГЛОЩЕНИЕ	EN ISO 10545-3		≤ 0,5 %	≤ 0,1 %
	RESISTENZA ALLA FLESSIONE FLEXION RESISTANCE - BIEGEFESTIGKEIT RESISTANCE A LA FLEXIÓN - RESISTENCIA A LA FLEXIÓN ПРЕДЕЛ ПРОЧНОСТИ ПРИ ИЗГИБЕ	EN ISO 10545-4		S ≥ 1.300 N R ≥ 35 N/mm <sup>2</sup> .	CONFORME COMPLYING - ERFÜLLT CONFORME - CONFORME COOTBETCTBYET
	RESISTENZA ALL'URTO IMPACT RESISTANCE - STOSSFESTIGKEIT RESISTANCE AUX CHOCS - RESISTENCIA A LOS GOLPES УДАРООСТОЙКОСТЬ	EN ISO 10545-5		VALORE DICHIARATO DECLARED VALUE - ANGEGBENER WERT VALEUR DÉCLARÉE - VALOR DECLARADO ЗАЯВЛЕННОЕ ЗНАЧЕНИЕ	> 0,80
	RESISTENZA ALL'ABRASIONE ABRASION RESISTANCE - ABRIEFESTIGKEIT RÉSISTANCE À L'ABRASION - RESISTENCIA A LA ABRASIÓN ПРОЧНОСТЬ НА ИСТИРАНИЕ	EN ISO 10545-6		≤ 175 mm <sup>3</sup>	CONFORME COMPLYING - ERFÜLLT CONFORME - CONFORME COOTBETCTBYET
	COEFFICIENTE DI DILATAZIONE TERMICA LINEARE COEFFICIENT OF LINEAR THERMAL-EXPANSION - LINEARER WÄRMEAUDEHNUNGSKOEFFIZIENT COEFFICIENT DE DILATION THERMIQUE LINEAIRE - COEFICIENTE DE DILATACIÓN TÉRMICA ЛИНЕАЛ - КОЭФФИЦИЕНТ ЛИНЕЙНОГО ТЕРМИЧЕСКОГО РАСТЯЖЕНИЯ	EN ISO 10545-8		VALORE DICHIARATO DECLARED VALUE - ANGEGBENER WERT VALEUR DÉCLARÉE - VALOR DECLARADO ЗАЯВЛЕННОЕ ЗНАЧЕНИЕ	α = 6,7x10 <sup>-6</sup> /C°
	RESISTENZA AGLI SBALZI TERMICI RESISTANCE TO THERMAL SHOCKS - BESTÄNDIGKEIT GEGEN TEMPERATURSCHWANKUNGEN RESISTANCE AUX CHOCs THERMIQUES - RESISTENCIA A LOS CHOQUES TÉRMICOS СТОЙКОСТЬ К ПЕРЕПАДАМ ТЕМПЕРАТУРЫ	EN ISO 10545-9		TEST SUPERATO SECONDO EN ISO 10545-1 TEST PASSED ACCORDING TO TEST BESTANDEN NACH TEXTE DÉPASSÉ SELON - PRUEBA SUPERADA SEGÚN ИСПЫТАНИЕ ПРОЙДЕНО В СООТВЕТСТВИИ С	NESSUN DANNO NO DAMAGE - KEIN SCHADEN AUCUN DOMMAGE - NINGUN DANO БЕЗ ПОВРЕЖДЕНИЙ
	DILATAZIONE ALL'UMIDITÀ (IN MM/M) MOISTURE EXPANSION (IN MM/M) - FEUCHTIGKEITSBEDINGTE AUSDEHNUNG (IN MM/M) DILATATION À L'HUMIDITÉ (EN MM/M) - DILATACIÓN CON LA HUMEDAD (EN MM/M) ВЛАЖНОСТНОЕ РАСТЯЖЕНИЕ (В MM/M)	EN ISO 10545-10		VALORE DICHIARATO DECLARED VALUE - ANGEGBENER WERT VALEUR DÉCLARÉE - VALOR DECLARADO ЗАЯВЛЕННОЕ ЗНАЧЕНИЕ	MAX 0,1 mm / m
	RESISTENZA AL GELO FROST RESISTANCE - FROSTBESTÄNDIGKEIT RESISTANCE AU GEL - RESISTENCIA AL HIELO МОРОЗОСТОЙКОСТЬ	EN ISO 10545-12		TEST SUPERATO SECONDO EN ISO 10545-1 TEST PASSED ACCORDING TO TEST BESTANDEN NACH TEXTE DÉPASSÉ SELON - PRUEBA SUPERADA SEGÚN ИСПЫТАНИЕ ПРОЙДЕНО В СООТВЕТСТВИИ С	NESSUN DANNO NO DAMAGE - KEIN SCHADEN AUCUN DOMMAGE - NINGUN DANO БЕЗ ПОВРЕЖДЕНИЙ
	RESISTENZA AI PRODOTTI CHIMICI USO DOMESTICO E ADDITIVI PER PISCINA RESISTANCE TO HOUSEHOLD AND SWIMMING POOL CHEMICAL PRODUCTS - RBESTÄNDIGKEIT GEGEN HAUSHALTSHEMIKALIEN UND ZUSATZSTOFFE FÜR SWIMMINGPOOLS - RESISTANCE AUX PRODUITS CHIMIQUES USAGE DOMESTIQUE ET ADDITIFS POUR PISCINE - RESISTENCIA A LOS PRODUCTOS QUÍMICOS DE USO DOMÉSTICO Y ADITIVOS PARA PISCINA - СТОЙКОСТЬ К ДЕЙСТВИЮ БЫТОВЫХ ХИМИЧЕСКИХ СРЕДСТВ, ДОБАВКАМ В БАССЕЙНЫ	EN ISO 10545-13		B MIN	CONFORME COMPLYING - ERFÜLLT CONFORME - CONFORME COOTBETCTBYET
	RESISTENZA A BASSE CONCENTRAZIONI DI ACIDI E ALCALI RESISTANCE TO LOW CONCENTRATIONS OF ACIDS AND ALKALI - BESTÄNDIGKEIT BEI NIEDRIGEN KONZENTRATIONEN VON SÄUREN UND LAUGEN - RESISTANCE À BASSES CONCENTRATIONS D'ACIDES ET ALCALIS - RESISTENCIA A BAJAS CONCENTRACIONES DE ÁCIDOS Y ALCALIS - СТОЙКОСТЬ К ДЕЙСТВИЮ НИЗКИХ КОНЦЕНТРАЦИЙ КИСЛОТ И ЩЕЛОЧЕЙ	EN ISO 10545-13		VALORE DICHIARATO DECLARED VALUE - ANGEGBENER WERT VALEUR DÉCLARÉE - VALOR DECLARADO ЗАЯВЛЕННОЕ ЗНАЧЕНИЕ	CONFORME COMPLYING - ERFÜLLT CONFORME - CONFORME COOTBETCTBYET
	RESISTENZA AD ALTE CONCENTRAZIONI DI ACIDI E ALCALI RESISTANCE TO HIGH CONCENTRATIONS OF ACIDS AND ALKALI - BESTÄNDIGKEIT BEI HOHEN KONZENTRATIONEN VON SÄUREN UND LAUGEN - RESISTANCE À HAUTES CONCENTRATIONS D'ACIDES ET ALCALIS - RESISTENCIA A ALTAS CONCENTRACIONES DE ÁCIDOS Y ALCALIS - СТОЙКОСТЬ К ДЕЙСТВИЮ ВЫСОКИХ КОНЦЕНТРАЦИЙ КИСЛОТ И ЩЕЛОЧЕЙ	EN ISO 10545-13		VALORE DICHIARATO DECLARED VALUE - ANGEGBENER WERT VALEUR DÉCLARÉE - VALOR DECLARADO ЗАЯВЛЕННОЕ ЗНАЧЕНИЕ	CONFORME COMPLYING - ERFÜLLT CONFORME - CONFORME COOTBETCTBYET
	RESISTENZA ALLE MACCHIE RESISTANCE TO STAINS - FLECKENBESTÄNDIGKEIT RESISTANCE AUX TACHES - RESISTENCIA A LAS MANCHAS УСТОЙЧИВОСТЬ К ПЯТНООБРАЗОВАНИЮ	EN ISO 10545-14		VALORE DICHIARATO DECLARED VALUE - ANGEGBENER WERT VALEUR DÉCLARÉE - VALOR DECLARADO ЗАЯВЛЕННОЕ ЗНАЧЕНИЕ	CONFORME COMPLYING - ERFÜLLT CONFORME - CONFORME COOTBETCTBYET
	CESSIONE DI PIOMBO E CADMIO LEAD AND CADMIUM DISCHARGE - ABGABE VON BLEI UND CADMIUM PERTE DE PLOMB ET CADMIUM - CESIÓN DE PLOMO Y CADMIO ВЫДЕЛЕНИЕ СВИНЦА И КАДМИЯ	EN ISO 10545-15		VALORE DICHIARATO DECLARED VALUE - ANGEGBENER WERT VALEUR DÉCLARÉE - VALOR DECLARADO ЗАЯВЛЕННОЕ ЗНАЧЕНИЕ	< AL LIMITE DI RILEVAMENTO < THAN INSTRUMENT LIMIT < UNMESSBARES WERT < LIMITE DE L'INSTRUMENT < LIMITE DEL INSTRUMENTO <НА ПРЕДЕЛЕ ОПРЕДЕЛИМОСТИ
	SCIVOLOSITÀ SKID RESISTANCE - RUTSCHWERT GLISSANCE - ADHERENCIA СКОЛЬЗКОСТЬ	DM. 236/89 BCRA	> 0,40		> 0,40
		ANSI A 137.1	WET DCOF > 0,42		> 0,42
		DIN 51130	-		R9

PER I CERTIFICATI SPECIFICI, E VALORI PUNTUALI, CONTATTARE FINCIBEC SPA - FOR SPECIFIC CERTIFICATES AND DATA, CONTACT FINCIBEC S.P.A - FÜR SPEZIELLE ZERTIFIKATE UND PUNKTWERTE, FINCIBEC S.P.A. KONTAKTIEREN - POUR LES CERTIFICATS SPÉCIFIQUES ET LES VALEURS PONCTUELLES, CONTACTER FINCIBEC S.P.A - PARA LOS CERTIFICADOS ESPECÍFICOS Y LOS VALORES CONCRETOS, CONTACTE CON FINCIBEC S.P.A - ВО ВОПРОСАХ СПЕЦИАЛЬНЫХ СЕРТИФИКАТОВ И ПОКАЗАТЕЛЕЙ СВЯЖИТЕСЬ С FINCIBEC SPA.

ESCLUSO PEZZI SPECIALI ED ELEMENTI DECORATIVI  
WITH THE EXCEPTION OF SPECIAL PIECES AND DECORS - A L'EXCEPTION DE PIÈCES SPÉCIALES ET ÉLÉMENTS DÉCORATIFS - AUSSCHLIEßLICH FORMSTÜCKE UND DEKORTEILE  
EXCLUIDO PIEZAS ESPECIALES Y ELEMENTOS DECORATIVOS

★ ★ ★ ★ ★  
**NAXOS**<sup>®</sup>  
C E R A M I C H E  
FINCIBEC GROUP



**NAXOS**  
Strada Statale 569, 169 – 41014 - Solignano (Mo) Italy  
Tel. +39 059 748811  
Fax +39 059 797376  
info@naxos-ceramica.it  
www.naxos-ceramica.it

**Fincibec S.p.A.**  
Sede legale: Via Valle d'Aosta, 47 - 41049 - Sassuolo (Mo) Italy  
Gruppo Fire S.R.L.

---

**Fincibec USA Inc.**  
240 Kent Ave K3/B36 Brooklyn N.Y. 11249 USA  
Ph.+1 917-969-4916  
info@fincibecusa.com



FINCIBEC S.p.A.  
socio di:

