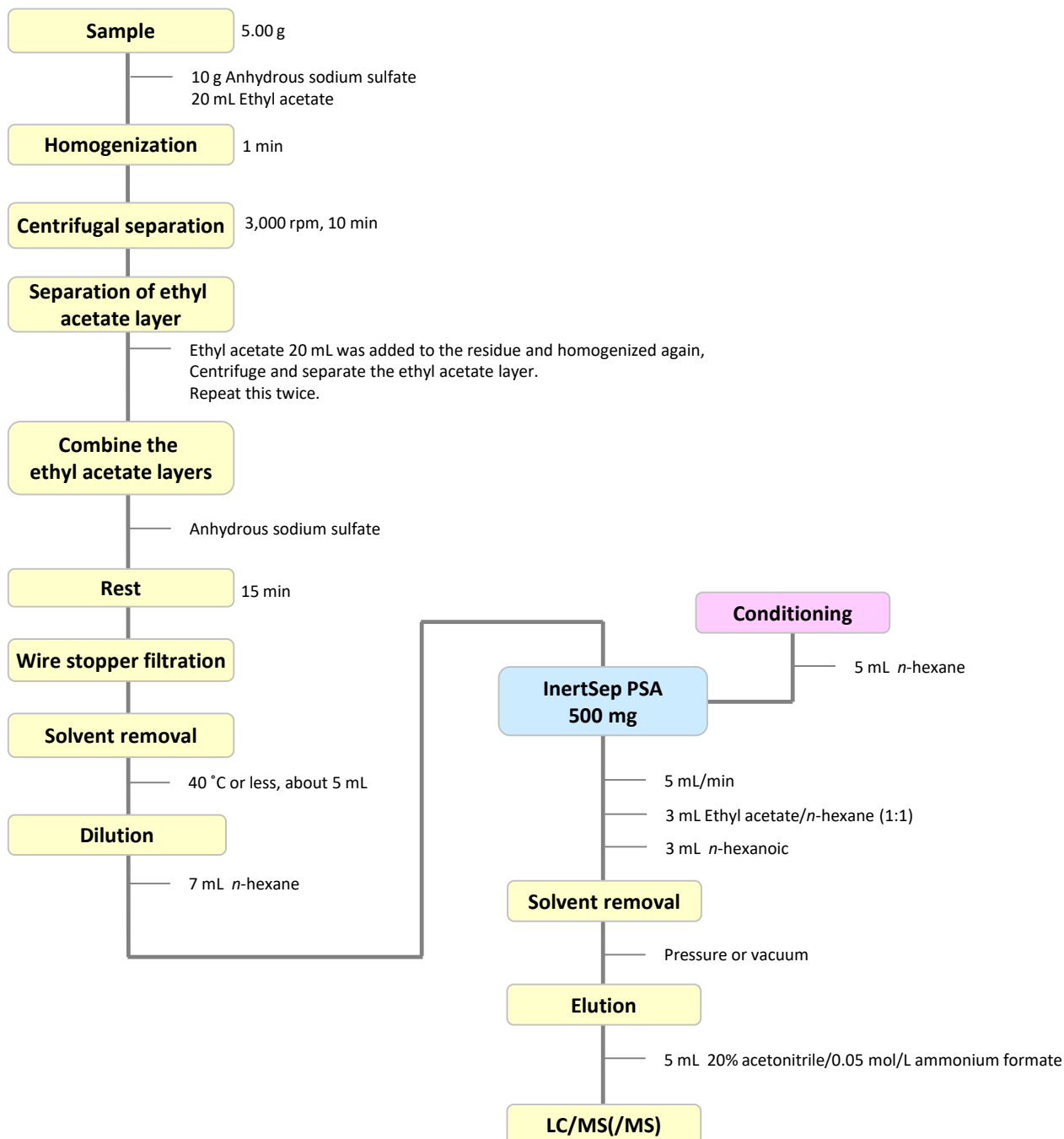


Sulfa drugs have antimicrobial activity and are used as veterinary drugs for the prevention and treatment of infectious diseases in livestock and fishery products. The Law for Ensuring the Safety of Feed and Improving the Quality of Feedstuffs stipulates standards for use, but the transfer of synthetic antibacterial agents to livestock and fishery products and their persistence have become recognized. The Food Sanitation Law was amended, and a positive list system was introduced May 29, 2006 to set limits for sulfa residues in foods.

The flow diagram below describes the pretreatment of livestock and fishery products prior to analysis by LC/MS (/MS).

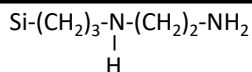
1. Flow diagram of solid phase pretreatment



Reference: From the Individual Test Method of MHLW Notification

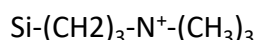
2. Products for solid-phase extraction

[InertSep PSA]



Mean particle size	: 65 µm
Carbon	: 11.5 %
Surface Area	: 450 m ² /g
Pore volume	: 0.7 mL/g
Pore size	: 60 Å
Ion exchange capacity	: 1.5 meq/g
PKa	: (10.1, 10.9)
PH range of use	: 2 - 8

[InertSep SAX/PSA]



Mean particle size	: 45 µm
Carbon	: 10 %
Surface Area	: 450 m ² /g
Pore volume	: 0.7 mL/g
Pore size	: 60 Å
Ion exchange capacity	: 0.7 meq/g
PKa	: (-)
PH range of use	: 2 - 8
Remarks	: OH - ion pair

InertSep PSA is a solid phase in which an ethylenediamine N propyl group is attached to silica gel. As a primary interaction, it has an anion exchange action, and as a secondary interaction it has a weak non-polar interaction.

Syringe barrel type cartridge

Product name	Column size	Qty.	Cat.No.
InertSep PSA	500 mg / 6 mL	30 bottles	5010-61624
	500 mg / 20 mL	20 bottles	5010-61629

InertSep SAX PSA is a two-layer cartridge for SAX and PSA.

InertSep SAX is a solid phase in which a trimethylaminopropyl group is attached to silica gel, and InertSep PSA is a solid phase in which an ethylenediamine N propyl group is attached to silica gel. It is suitable for sample clean-up for residual pesticide analysis, etc. by making it into two layers.

Product name	Column size	Qty.	Cat.No.
InertSep SAX/PSA	500 mg / 500 mg / 6 mL	30 bottles	5010-68101
	500 mg / 500 mg / 20 mL	20 bottles	5010-68104

[Accessories for Solid-Phase Extraction Cartridge Connections]



Cartridge connection adapter

Cartridge adapter used to connect syringe barrel cartridges and LSC cartridges.

Product name	Specification	Qty.	Cat.No.
Solid Phase Extraction Cartridge Connection Adapter (PP)	For 1,3,6 mL reservoirs	12	5010-60000
	For 12,20 mL reservoirs	12	5010-60001

Empty reservoir

Used when the sample volume is greater than the cartridge capacity.

Product name	Specification	Qty.	Cat.No.
Empty reservoir (PP) No frits	6 mL	30 bottles	5010-60102
	12 mL	20 bottles	5010-60103
	20 mL	20 bottles	5010-60104

GL Sciences disclaims any and all responsibility for any injury or damage which may be caused by this data directly or indirectly. We reserve the right to amend this information or data at any time and without any prior announcement.

GL Sciences, Inc. Japan

22-1 Nishishinjuku 6-Chome
Shinjuku-ku, Tokyo,
163-1130, Japan
Phone: +81-3-5323-6620
Fax: +81-3-5323-6621
Email: world@glsc.co.jp
Web: www.glsciences.com

GL Sciences B.V.

De Sleutel 9
5652 AS Eindhoven
The Netherlands
Phone: +31 (0)40 254 95 31
Email: info@glsciences.eu
Web: www.glsciences.eu

GL Sciences (ShangHai) Ltd.

Tower B, Room 2003,
Far East International Plaza,
NO,317 Xianxia Road,
Changning District.
Shanghai, China P.C. 200032
Phone: +86 (0)21-6278-2272
Email: contact@glsciences.com.cn
Web: www.glsciences.com.cn

GL Sciences, Inc. USA

4733 Torrance Blvd. Suite 255
Torrance, CA 90503
Phone: 310-265-4424
Fax: 310-265-4425
Email: info@glsciencesinc.com
Web: www.glsciencesinc.com

International Distributors

Visit our Website at www.glsciences.com/distributors