

PRINCIPIA
LIFELONG LEARNING

Engage.
Travel.
Learn.



JULY 24-31, 2026

Featuring Trip Scholars
Dr. Stephanie Lovseth
and Dr. John Lovseth

DISCOVER SOUTHEAST ALASKA BY SMALL SHIP



Orbridge

Dear Principia Lifelong Learner,

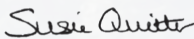
Join us for a summertime voyage through Alaska's remote Inside Passage aboard the 76-guest *Chichagof Dream*. Experience pristine wilderness, ice-blue glaciers, and thrilling wildlife encounters—whales breaching, bears along the shoreline, and eagles overhead.

With expert naturalists and a seasoned crew, we'll navigate secluded coves unreachable by larger ships. Extend your adventure with an optional pre-tour to Denali National Park, featuring a scenic ride on the Alaska Railroad and a stay near North America's tallest peak.

Best of all, you'll travel in good company—with Principia trip scholars Drs. John and Stephanie Lovseth, a caring Principia host, and lifelong learners like you.

We anticipate this trip will fill quickly. To reserve, visit principia.orbridge.com or call 866.639.0079.

Sincerely,



Susie Quitter

Principia Lifelong Learning Director

P.S. If you're interested in traveling with Principia Lifelong Learning but not available these dates, visit principia.edu/trips to explore other upcoming PLL travel programs!

Meet Your Trip Scholars

Dr. Stephanie Lovseth (C'05) is Assistant Professor of Sustainability & Educational Studies and the Director of Study Abroad at Principia College. She specializes in sustainability education, social ecology, and global learning. Her scholarship and teaching focus on the intersections of environmental and social systems, place-based education, and leadership for just and sustainable futures. As Director of Study Abroad and a faculty member, Dr. Lovseth has developed and led many immersive learning experiences in diverse ecological and cultural contexts, domestically and internationally, fostering interdisciplinary engagement and global citizenship.



Dr. John Lovseth (C'05) is Associate Professor of Biology and Natural Resources and Director of Land Stewardship at Principia College. He teaches classes in forestry, forest ecology, geographic information systems, and agroforestry. For 10 years, he taught students how to make maple syrup in a course entitled Sugarbush Management. Many of his research topics include historical ecology and connections to current management practices. John is a certified forester with the Society of American Foresters. In addition to his teaching duties, John manages the College's 2,600-acre campus, where he administered one of the first Forest Stewardship Council-certified forests in Illinois.



Discover Southeast Alaska | Itinerary Highlights (subject to change)

The itinerary and daily activities (including skiff rides, kayaking and hiking) are subject to change based on weather, wildlife viewing and navigation conditions.

Day 1 ARRIVE IN JUNEAU, AK – EMBARKATION (D)

Welcome to Juneau, Alaska's remote and rugged capital. For those arriving by the suggested time, visit the Alaska State Museum to view artifacts and art objects that tell the tale of Alaska's history, including extensive ethnographic exhibits of the cultures of Alaska's native people. Take a short bus ride to the port to board the *Chichagof Dream*. As embarkation begins unpack and become familiar with your stateroom and the ship's welcoming public spaces. Gather for your first dinner on board taking the opportunity to become acquainted with your Expedition Leader, ship crew and fellow travel companions.

Day 2 ICY STRAIT (B,L,D) Glide through Icy Strait

with prime viewing on deck to spot for wildlife including orcas, Steller sea lions, seals, porpoises and magnificent humpback whales. For those seeking additional activities perhaps join a skiff ride or hiking excursion on land. The crew will lead skiff rides and land excursions, offering deeper insight on the surrounding flora and fauna and the area's geography.

Day 3 GLACIER BAY NATIONAL PARK (B,L,D)

Explore awe-inspiring Glacier Bay National Park, where colossal glaciers meet rugged mountains and a temperate rainforest. Marvel at the face of Margerie Glacier—a 21-mile-long river of ice that stretches down from the towering peaks of the Fairweather Range. Further into the park is Johns Hopkins Glacier, a massive, actively advancing ice sheet. Continuing to Bartlett Cove visit the park lodge and visitor center or participate in a guided forest walk. Watch for puffins, sea lions and harbor seals.

Day 4 TRACY ARM FJORD (B,L,D) Venture into Tracy Arm Fjord, an impressive 30-mile-long fjord that's part of the Tracy Arm-Fords

Terror Wilderness and host to hundreds of waterfalls. During leisure time on the ship take advantage of the open wheelhouse policy. Visit the captain and officers on the bridge, view the charted course, hear ship-to-ship communications and listen to stories from experienced Alaskan mariners.

Day 5 PETERSBURG | FREDERICK SOUND (B,L,D)

Step ashore in Petersburg, a charming fishing village with deep Scandinavian roots. Strolling through downtown admire the architecture, colorful murals and decorative folk painting adorning the buildings. The surrounding waters of Frederick Sound are among the best places in Alaska to observe humpback whales, which frequently display dramatic behaviors perfect for viewing and photography. After lunch take a skiff ride across Wrangell Narrows for a beautiful hike on the Petersburg Creek Trail.

Day 6 HIDDEN FALLS (B,L,D) Experience a rare tour of Hidden Falls Hatchery for an up-close look at one of Alaska's most productive salmon enhancement facilities.

This hatchery plays a crucial role in sustaining the region's commercial, sport and subsistence fisheries by releasing millions of salmon smolts annually. Gain insight from the knowledgeable staff about the hatchery's operations as they explain how the facility raises and releases chum, coho and Chinook salmon. Before dinner gather for an enlightening discussion with your onboard naturalists, whose deep knowledge and passion for Alaska's wilderness provide a deeper understanding of the locations and cultures you're witnessing.

Day 7 EASTERN BARANOF ISLAND | LAKE EVA (B,L,D) Cruise to Lake Eva for a final day of outdoor activities. Join a skiff tour or explore the shoreline during a hike (conditions permitting). Tonight gather together for a special Captain's Farewell Dinner to celebrate your adventures touring this remarkable Alaskan wilderness.

Day 8 SITKA – DISEMBARKATION | DEPART SITKA (B) After breakfast and disembarkation, guests departing during the suggested times take the complimentary transfer to the airport for flights home. If you reserved an additional night in Sitka, take a complimentary shuttle to your accommodations.

(B = Breakfast, L = Lunch, D = Dinner)



What's Included

- 7 nights aboard the *Chichagof Dream*
- All onboard hand-crafted meals: 7 breakfasts, 6 lunches and 7 dinners—including a special Captain's Farewell Dinner
- An onboard lecture program and educational guidance of two naturalists plus an Orbridge Expedition Leader
- Guided kayaking, hiking, walking, skiff excursions and wildlife viewing where humpback whales, orcas, brown bears, Steller sea lions, harbor seals, sea otters, arctic terns, bald eagles and other populations are frequently spotted
- All port fees and entry fees to parks, preserves, museums, attractions and special excursions as described in the itinerary
- Gratuities for Orbridge Expedition Leader, airport transfer drivers and drivers/guides on included land excursions
- Airport transfers for guests arriving and departing during the suggested times

Activity Level: This program offers a variety of activities, typically not strenuous for guests with average mobility, including skiff rides, hiking and kayaking. Walks and hikes are at a leisurely pace in order to see and learn as much as possible about the region. It's our expectation that guests are able to walk with good balance, and go up and down stairs easily without assistance.



Orbridge

Orbridge Standard of Excellence

Orbridge understands travel today can be complicated. From cabin or room selection to airport transfers, dietary requests, or pre- or post-tour details—we are dedicated to making your journey seamless and special from the moment you leave home.

Our curated destinations—featuring outstanding properties and ships, meticulously crafted itineraries, and knowledgeable guides, travel directors and expedition leaders—offer life-changing experiences you'll never forget.

Our Guest Services team is staffed by well-traveled professionals who provide personalized attention, ensuring all your questions are answered and all the details of your trip are explained to you.

Our air partners can make flight arrangements for guests. In the event of flight delays and/or schedule changes, they will provide guests with personalized assistance. To book flight reservations with our air partners, contact (206) 319-5011 and select the option for your destination to discuss flight details with our air colleagues. Upon ticketing, a fee will be charged.

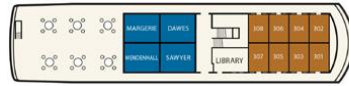
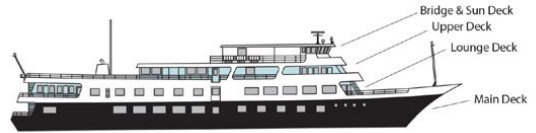


Accommodations *(subject to change)*

Aboard the agile *Chichagof Dream*, you'll gain exclusive access to channels and bays inaccessible to larger vessels. The ship's unassuming style allows guests to experience the true heart and soul of Alaska.

The *Chichagof Dream* features expansive viewing areas on the bow and aft outdoor promenade decks, a hull design optimized for supreme comfort in Alaskan waters, and forward-facing windows in the spacious lounge that extend from the deck to the ceiling, offering panoramic views off the bow.

NOTE: The *Chichagof Dream* does not have an elevator.



Upper deck



Lounge deck



Main deck



A

Two twin beds, two porthole windows, spacious wardrobe, private bathroom with shower.

Approx. 105 sq. ft.



AA

Two twin beds, one or two picture windows, spacious wardrobe, private bathroom with shower.

Approx. 109 sq. ft.



Deluxe

One queen or two twin beds, one large picture window, spacious wardrobe, private bathroom with shower.

Approx. 155 sq. ft.



AAA

One queen or two twin beds, one large picture window, spacious wardrobe, private bathroom with shower.

Approx. 109 sq. ft.



Deluxe Suite (upper)

One queen bed, two large picture windows, spacious wardrobe, vanity, sitting area, private bathroom with shower. Approx. 208 sq. ft.

Optional Pre-Tour Denali National Park

Journey into the scenic wilds of America's most northern state, through Alaska's rugged forests and wildlife. A highlight of this adventure includes an afternoon traveling aboard the historic Alaska Railroad with superior viewing from your upgraded glass-dome seat.



Day +1 **ARRIVE IN ANCHORAGE, AK** Meet your Orbridge Expedition Leader and fellow travel companions at a welcome dinner, and prepare for your upcoming Denali activities and excursions.
Overnight: Hotel Captain Cook (D)

Day +2 **ANCHORAGE | ALASKA RAILROAD | DENALI NATIONAL PARK** Board the train to Denali National Park. This evening enjoy dinner with a presenter from the Murie Science and Learning Center.
Overnight: Grande Denali Lodge (B,L,D)

Day +3 **DENALI NATIONAL PARK WILDERNESS EXCURSION** Take a wilderness bus tour through Denali's wilderness to learn about its landscapes, wildlife and history. Redeem your Alpenglow Restaurant dinner voucher either tonight or tomorrow evening.
Overnight: Grande Denali Lodge (B,L,D)

Day +4 **DENALI NATIONAL PARK** After breakfast participate in one of the pre-purchased optional excursions or enjoy free time to explore Denali. Later, reconvene for a reception with Alaskan homesteader, Jimmie Hendricks, and hear his journey and lifelong dream to explore Alaska and make it his home.
Overnight: Grande Denali Lodge (B,R)

Day +5 **DENALI NATIONAL PARK | TALKEETNA | ANCHORAGE** Return to Anchorage by motor coach stopping for free time in Talkeetna. Visit the Alaska Native Heritage Center in Anchorage. This evening enjoy time to explore downtown at leisure.
Overnight: The Wildbirch Hotel (B)

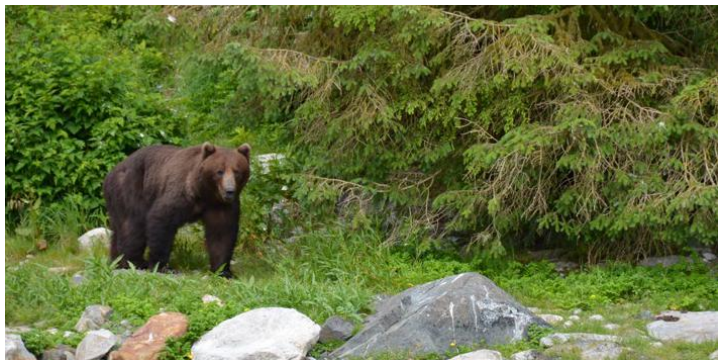
Day +6 **DEPART ANCHORAGE** Take the complimentary transfer to Anchorage International Airport for the group flight to join guests on the main program.

What's Included

- 5 nights hotel accommodations
- 4 breakfasts, 2 lunches, 3 dinners (including a dinner voucher for Grande Denali Lodge's Alpenglow Restaurant) and 1 reception
- Rail journey to Denali National Park along the distinguished Alaska Railroad featuring: reserved seating in the upper-level glass-dome car, priority seating in the dining room for breakfast and lunch, and two complimentary beverages
- Hotel courtesy shuttle between the rail depot, Grande Denali Lodge, the Denali Park Visitor Center and town
- A wilderness bus tour into Denali National Park
- Deluxe motor coach transportation to Talkeetna and Anchorage
- Services of an Orbridge Expedition Leader
- Gratuities for Orbridge Expedition Leader, local guides, drivers, porters, housekeeping and wait staff for included meals
- Airport transfers for guests arriving and departing during the suggested times

Optional Excursions

DogGonelt Dog Sled Tour
Denali Glacier Landing Flight
Arctic Circle Flight



JULY 24-31, 2026

Denali National Park Pre-Tour: July 19-24, 2026

RESERVE YOUR SPACE TODAY

Online: principia.orbridge.com

Phone: **866.639.0079**

Cabin Category	Standard Rate	Special Rate*
Category A	\$6,499	\$5,995
Category AA	\$7,399	\$6,895
Category AAA	\$7,899	\$7,395
Deluxe	\$10,299	\$9,795
Deluxe Suite (upper)	\$11,999	\$11,495
Single (Cat. AA)	\$11,499	\$10,995
Single (Cat. AAA)	\$11,899	\$11,395

DEPOSIT AMOUNT PER PERSON

\$500 pre-tour • \$850 main tour

Denali Pre-Tour	Standard Rate	Special Rate*
Double	\$4,199	\$3,995
Single	\$5,599	\$5,395
—includes \$350 per person internal airfare—		
Denali Optional Excursions		Rate
DogGonelt Dog Sled Tour		\$65 (per adult)
		\$55 (youth 12 and under)
Denali Glacier Landing Flight		\$685 (per adult)
		\$635 (youth 9 and under)
Arctic Circle Flight Tour		\$575 (per adult)

*Special group rates; limited offer. All rates are per person in U.S. dollars based on double occupancy except where noted as Single. Single availability limited. Unless noted otherwise, airfare is not included. **An exclusive Early Booking Bonus, Expedition Libraries are curated collections of useful resources and background reading tailored to this program. Place your deposit on or before the specified date, and one Expedition Library per room will be sent after receipt of final payment. Libraries may be purchased; call for details. Full Terms & Conditions at terms.orbridge.com. Any payment to Orbridge, LLC constitutes your acceptance of the terms and conditions set out therein, including but not limited to the cancellation and refund terms. CST#2098750-40 WST#602828994

Orbridge takes seriously the responsibility to minimize our global environmental impact. Each year we plant 100,000 trees in U.S. State Forests with afforestation needs as an ongoing initiative among our evolving sustainability efforts. Learn more at orbridge.com/going-green.





DISCOVER SOUTHEAST ALASKA

FREE EXPEDITION LIBRARY
AN EXCLUSIVE EARLY
RESERVATION BONUS

JULY 24-31, 2026

Special Alumni Rate:

Save more than \$1,000 per couple

30-DAY REFUND GUARANTEE

Principia Lifelong Learning
13201 Clayton Rd
St. Louis, MO
63131-1002

Reserve by
September 5, 2025**

PRSR STD
U.S. POSTAGE
PAID
PERMIT NO. 825
SAN DIEGO, CA

