



**Precious Apparels Ltd**  
(A 100% EXPORT ORIENTED INTIMATE APPAREL MANUFACTURER)

**Factory Profile**



# *Location*

## Location of factory

**Precious Apparels Ltd.**

**Plot#6602(P) & 6603(P)  
Airport Road, Chittagong  
Bangladesh.**

**Tel: (880)31 740521**

**Fax (880) 31 740525**

# CONTENT

1. Introduction
2. Objectives
3. At a glance
4. Our Premises
5. Organogram
6. Strategic Goals
7. Product Portfolio
8. Production Capacity
9. Production Flowchart
10. List of machineries & Equipments'
11. Core Competence
12. Compliance and welfare
13. Operational Excellence
14. PAL Safety & Hygiene List
15. BANK Information
16. Company Contract Persons

# INTRODUCTION

- ❑ Started operation in October 2009
- ❑ Export oriented company that operated globally
- ❑ Portfolio includes Men's, Women's & Kids lingerie items
- ❑ Ensure quality products, competitive price and on time delivery

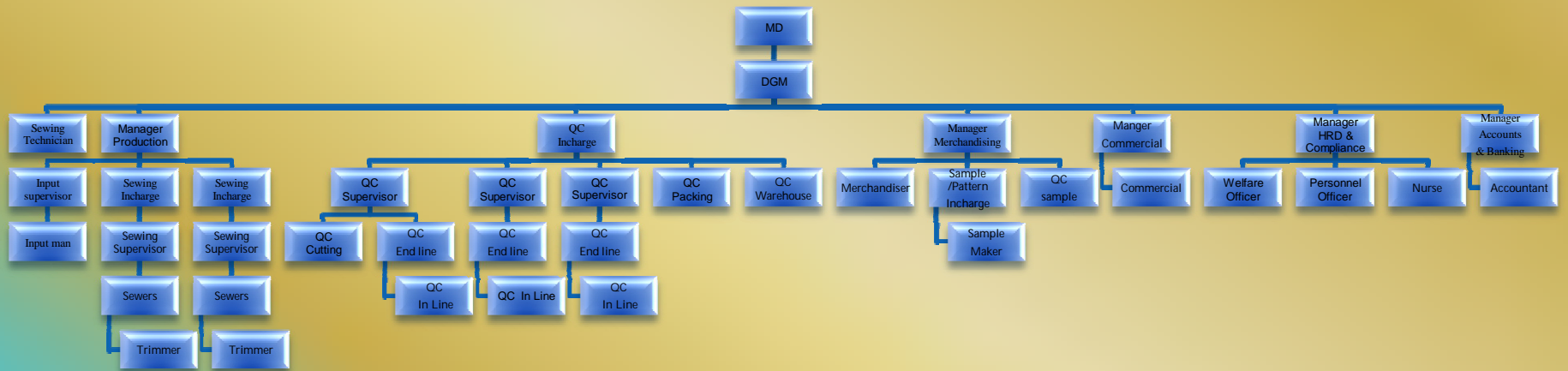
## OBJECTIVES

- To make best consumer product for our valued customers
- Committed to establish -
  - Safe Work Environment
  - Competitive Price
  - Best Quality Products
  - On Time Delivery

## AT A GLANCE

- Name of the Project : **Precious Apparels Ltd.**
- Location of the Project : **Plot#6602(P) & 6603(P) Airport Road, Chittagong**
- Year of Establishment : 2009
- Status of the project : Private Limited Company
- Project Line : 10 Sewing Lines (Lingerie's)
- Employment : Management - 01 Persons
- : Administrative - 11 Persons
- : Technical - 10 Persons
- : Skilled Worker - 275 Persons
- : Semi-skilled - 124 Persons
- : Unskilled - 98 Persons
- : Total -510 Persons

# Organization Chart



# STRATEGIC GOALS

## Customer Expectations

- Experienced technical team to understand buyer requirements
- To Achieve - AQL 2.5 for our production
- In house light box for batch wise fabric Inspection

## Workforce Motivation

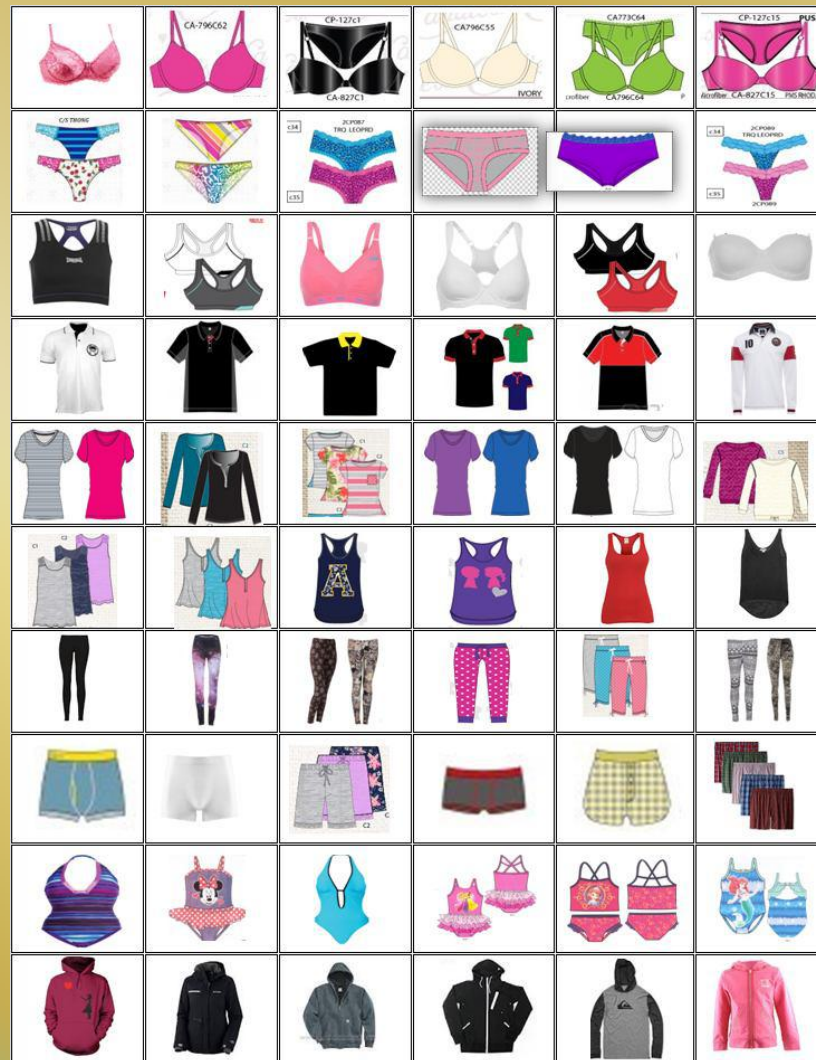
- Goals are shared by all members of management , staffs & Beneficiaries
- Offer a safe & rewarding work environment to our workforce
- Training, Workshop, Seminar & visit to abroad frequently

## Future Development

- Reinvestment of profit in expansion of capacity & resources
- Continuous market research to identify potential customer
- Invest on Standing Developments for the Staffs & Workers

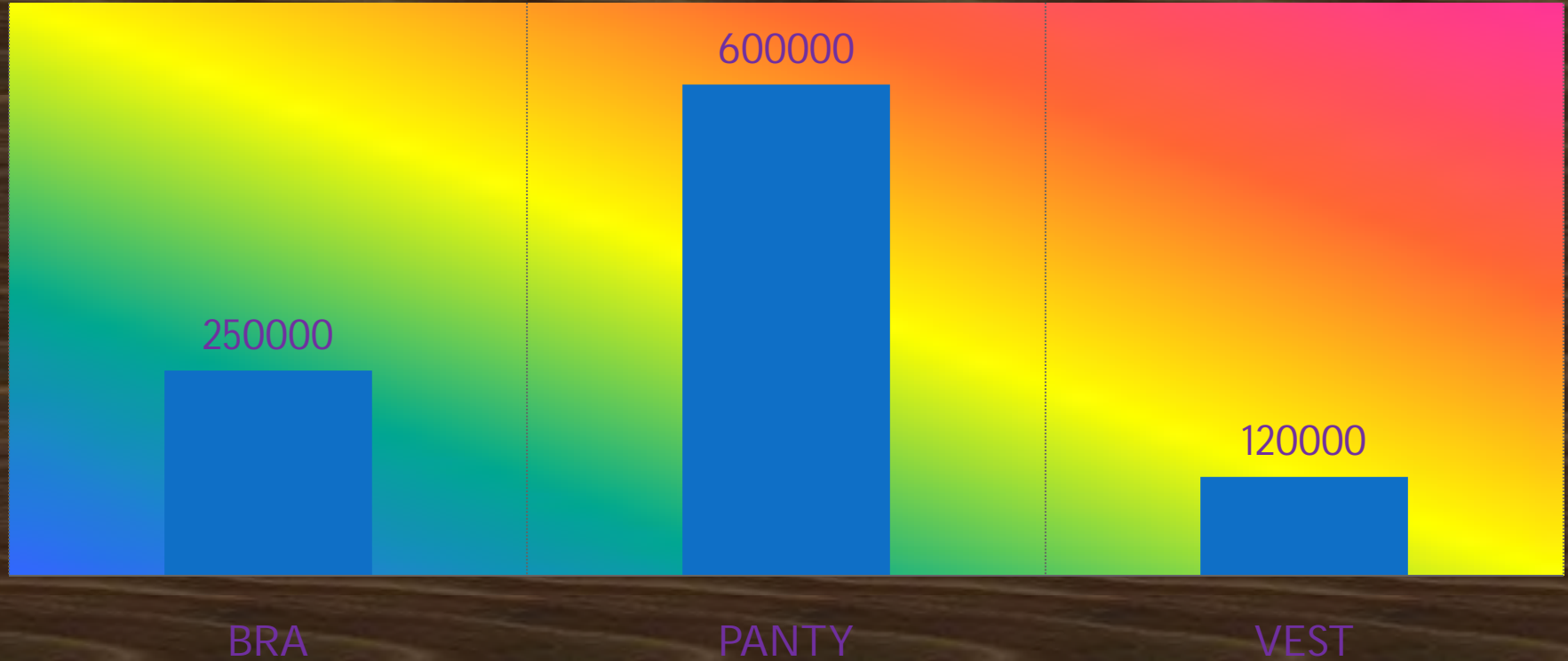
# PRODUCT PORTFOLIO

- Bra
- Panties
- Swimwear
- Tank Top
- Boxer
- T-Shirt
- Polo Shirt
- Vest

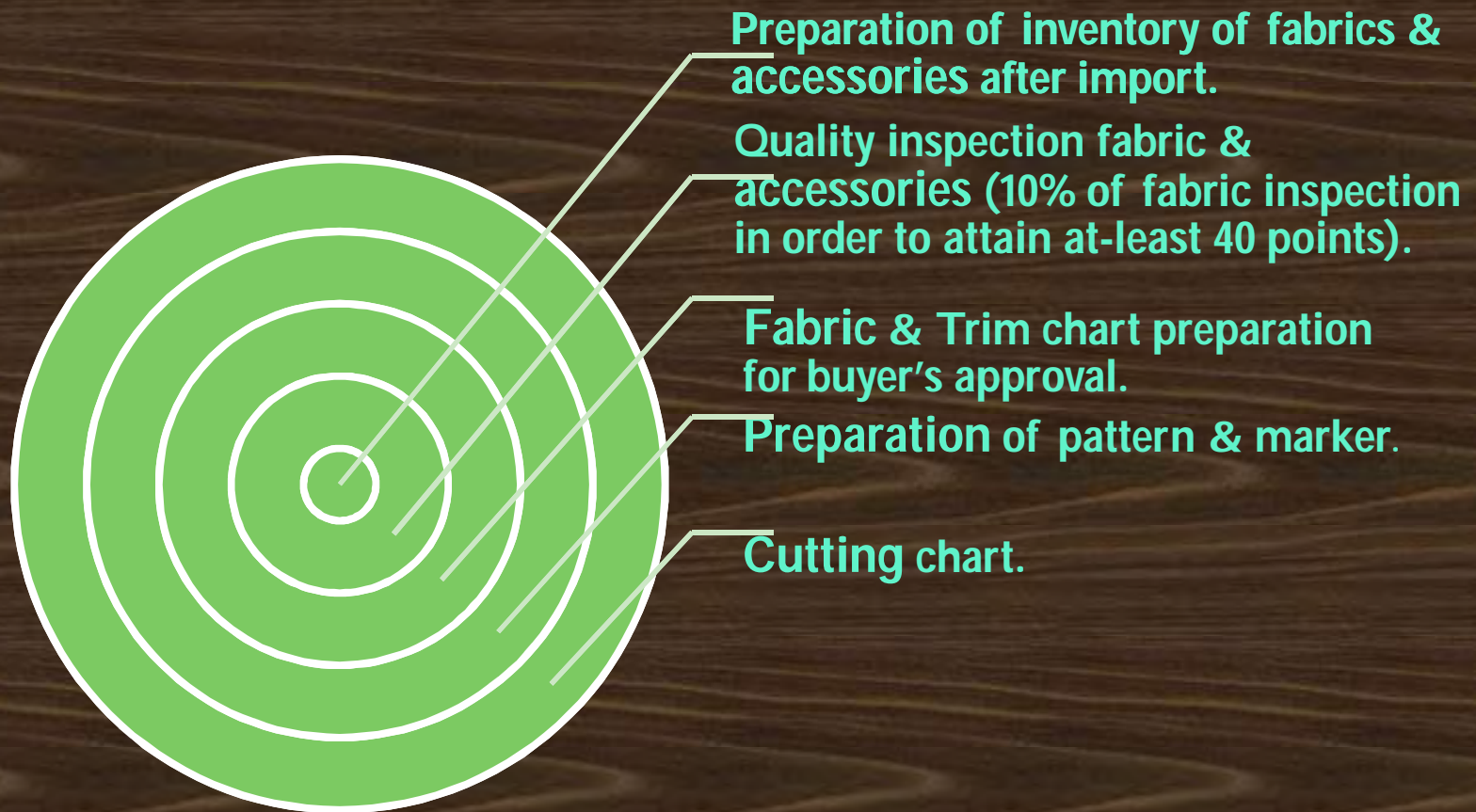


# PRODUCTION CAPACITY

■ PRODUCTION CAPACITY



# PRODUCTION FLOW CHART



# MACHINERIES

## SAMPLE SECTION

SI No.	Machine	Brand Name	Quantity	Country Of Origin
1	Single Needle Lockstitch	ZOJE	4	China
2	Single Needle over lock/Back attache	ZOJE	2	China
3	Flatbed Knife set	BAOYU	1	China
4	Flatbed Cover stitch	BAOYU	1	China
5	Zigzag Lockstitch	SINGER	2	Japan
6	Bar teck Lockstitch	PEMAL	1	China
7	Twin needle Lockstitch	BROTHER	1	Japan

# CUTTING SECTION

SL NO	Machine	Brand	Quantity	Country of Origin
01	CNC Cutter		2	China
02	Cutting Tables		2	
03	Numbering Machine		3	Italy
04	Band Knife		4	China
05	Cloth Cutter 10"		4	USA
06	Rib Cutter		1	China

# SEWING SECTION

SI No	Machine	Brand Name	Quantity	Country of Origin
1	Single Needle Lockstitch	ZOJE	109	CHINA
		JUKI	89	JAPAN
2	Over lock	ZOJE	60	CHINA
		PEGASUS	9	JAPAN
		SINGER	1	JAPAN
		JACK	8	CHINA
		SIRUBA	11	JAPAN
		BAOYU	13	CHINA
		GEMSY	13	CHINA
		SIRUBA	18	JAPAN
3	Flat lock	YAMATO	15	JAPAN
		ZOJE	24	CHINA
		SINGLING	8	CHINA
		PEGASUS	18	JAPAN
		BAOYU	5	CHINA
		WINDER KING	1	CHINA
		YOKO	2	CHINA
4	DLM SIDE CUTTER	SHUNFA	12	CHINA
		SINGER	46+1	JAPAN
		JUKI	16	JAPAN
		YAMATO	1	JAPAN
		BROTHERS	7	JAPAN
5	Zigzag Lockstitch	GEMSY	2	CHINA
		PEMAL	3	CHINA
		JUKI	12	JAPAN
		ZOJE	9+8	CHINA
6	Bar teck Lockstitch	BROTHERS	23	JAPAN
		JACK	2	CHINA
		ZOJE	5	CHINA
7	Twin needle Lockstitch	JUKI	6	JAPAN
8	Button Attach	JUKI	6	JAPAN

# FINISHING SECTION

SL NO	Machine	Brand Name	Quantity	Country of Origin
08	Fabric Inspection M/C		1	China
09	Light Box		1	Japan
10	Spot Remover		1	China
11	Heat Sealer		6	China
12	Iron Tables		8	China
13	Steam Iron		8	China
14	Needle Detector		1	China
15	Compressor		2	
16	Electric boiler		1	
17	Generator	250KVA	1	UK
18	Weighing M/C		1	China
19	Sound System		2	India

# ASSETS & UTILITIES

## UTILITIES

SI No	Particulars	Remarks
1	Deep Tube well	
2	Air Condition System	
3	Central fire control system	
4	Electrical Sub-Station, Distribution System	
5	E. Distribution Board	
6	Others	

## CORE COMPETENCE

### Customer Expectations

- We deploy experienced Production & Q.C team to ensure buyer requirements
- We have dedicated and skilled work force running the production

### Competitive Price

- We have a strong source for yarn, fabrics, raw materials, strong trims source in Overseas through our liaison offices

### Best Quality Products

- We have sophisticated machines with big capacity production that runs on meticulous process
- We have a Light Box

## Compliance and welfare

- Compliance of International labor law, Environmental law, Buyer requirements
- Belief on taking care of society for the sustenance of business
- Awareness Program and Initiatives to ensure safety at work
- Internal resource development program
- Free of cost employee medical facilities

## OPERATIONAL EXCELLENCE

- We are committed to apply orientation, demonstration, training to become a reliable & trusted company.
- We have a special team to ensure health & hygiene matters in the workplace

Health and  
Hygiene



- The safety of the work force, machines, and materials are most important priority
- Fire Safety issue is also a major concern for the management

Safety and  
Security



# PAL SAFETY & HYGIENE LIST

Section	Fire extinguisher			Fire Alarm	Emergency Lighting	E. Exit Light	Gong Bell	Hose Pipe	First Aid Box	Smoke Detector	FFT Team member	First Aid Team member	Toilets			Exhaust Fan	Total Floor Space
	ABC	Co2	Total										Male	Female	Total		
Sample	1		1		1	2				1	2	1	1	1	2	1	58000 Square Feet
Cutting	4	2	6	1	2	1		1	1	1	6	2	1	3	4	5	
Sewing	10	6	16	2	10	2	1	2	4	6	30	8	2	9	11	6	
Finishing	2	1	3	1	3	5		1	1	2	8	2	1	5	6	1	
Store / Warehouse	2	1	3	1	3	2		1	1	2	3	1	1	1	2		
Maintenance	1	1	2		1	2				1	2	1	1		1	1	
Total Office Area	2	1	3	1	5	2		1	1	1	1	1	1	1	2		
Canteen	1	1	2		2	2				1							
Child Care	1		1		2	4			1	2		2		1	1		
Spot Remove Room					1	1				1	1		1		1		

## BANK INFORMATION

PUBALI BANK PLC  
CDA CORPORATE BRANCH  
CDA BULIDING, KOTWALI  
CHATTOGRAM-4000, BANGLADESH.

Bank Asia Limited  
Agrabad Branch  
69, Agrabad C/A  
Chittagong, Bangladesh

## COMPANY CONTACT PERSONS

**Md.Shamsul Azam**

**Chairman**

**Precious Apparels Ltd.**

Plot#6602(P) & 6603(P) Airport Road, Chittagong,  
Bangladesh. Tel: (880)31 740521, Fax (880) 31 740525

Cell: +01716860580

E-mail: [info@preciousbd.biz](mailto:info@preciousbd.biz)

**Mohammad Javed Chowdhury**

**Merchandising Manager**

**Precious Apparels Ltd.**

Plot#6602(P) & 6603(P) Airport Road, Chittagong,  
Bangladesh. Tel: (880)31 740521, Fax (880) 31 740525

Cell: +01745 939272 (We chat, Whatsapp)

E-mail: [javed@preciousbd.biz](mailto:javed@preciousbd.biz)