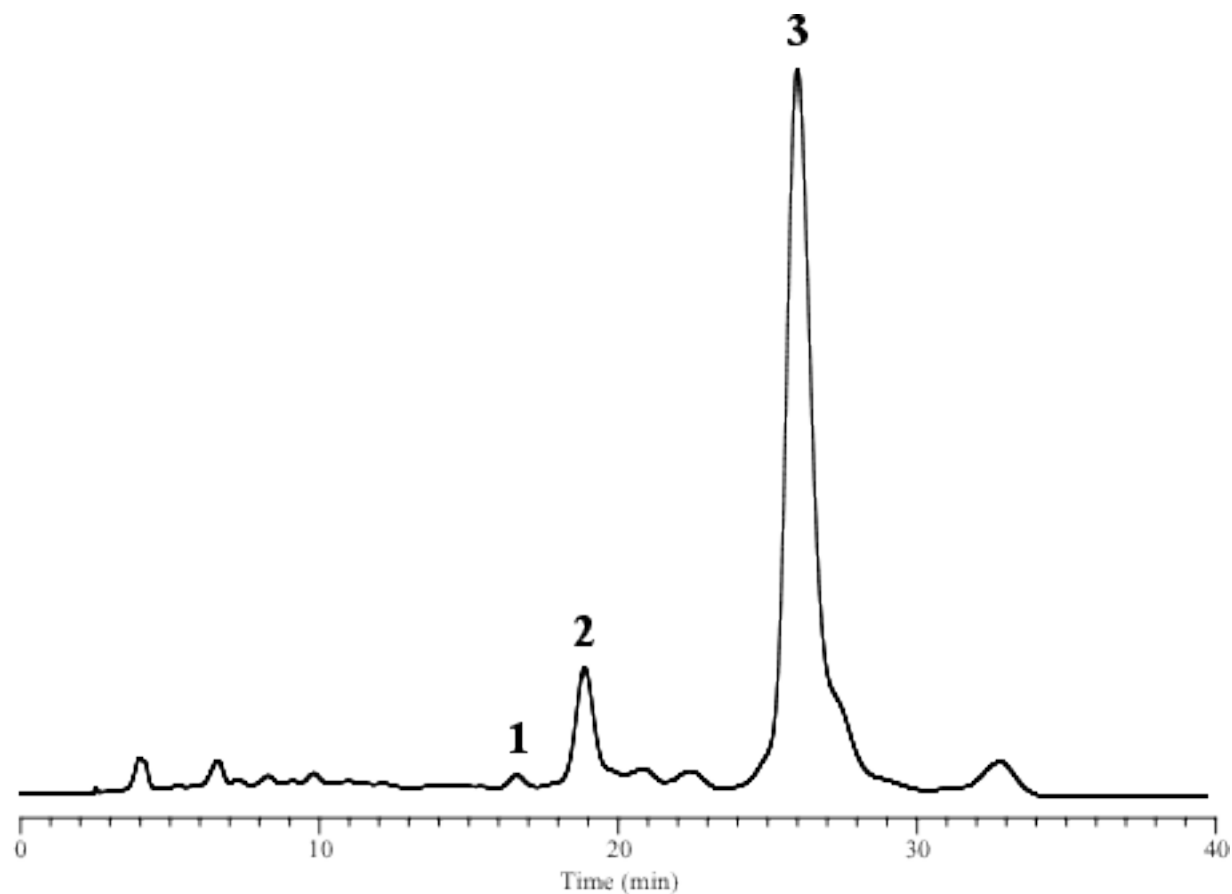


## Analysis of Vegetable Juice

Data No. LA053-0000



Column : Inertsil ODS-P  
5  $\mu\text{m}$   
250 x 4.6 mm I.D.

Column Cat. No.: 5020-02002

Eluent : A) CH<sub>3</sub>OH  
B) THF  
A/B = 95/5, v/v

Flow rate : 1.0 mL/min.

Col. Temp. : 30°C

Detection : VIS 450 nm

Injection Vol. :

Sample : Carotenoids

Solutes : 1.  $\alpha$ -Carotene  
2.  $\beta$ -Carotene  
3. Lycopene