



TALKING SHOPS

WILLOW WOOD HOSPICE RETAIL NEWS

NEW-LOOK VANS SMOOTH NEW SYSTEM



Making the most of every donation!

In this edition...

New-Look Vans Celebrating Vivienne Westwood Fashion Show Invite Clearance Outlet - Hidden Gem
Tracy Minshull - a year at the helm Shop Focus - The Pad Waterloo - the whole community cares

Moving on up in 2024!!



ALWAYS REMEMBER...

**"The meaning of life
is to find your gift. The
purpose of life is to
give it away."**

Pablo Picasso

As we embrace 2025, I want to take a moment to reflect on the incredible progress we made in 2024 and share some exciting plans for the year ahead.

Last year was a pivotal one for us. We opened our stunning new boutique store in Glossop, moving from a smaller location to a larger, more modern space. We also upgraded our Donation Centre to include a Clearance Shop, giving us new ways to make the most of your generous donations. Our two fashion shows were a huge success, showcasing the quality and style available in our stores while engaging the local community.

Hospice Care Week in October was a real highlight, giving everyone a chance to celebrate the huge contribution our charity shops make—an incredible 25% of the Hospice's annual income! This is only possible thanks to our hardworking teams, generous supporters, and amazing volunteers, both regular and corporate—not to mention the public, whose donations and purchases make such a difference. It's incredible to think that every item donated and every pound spent by you helps us continue our vital work. Our whole community truly makes all the difference!

Now, our focus is firmly on the future. In 2025 and beyond, we're exploring new and creative ways to make the most of donations and strengthen our presence in the community. From pop-up shops and jumble sales to summer fun days, we're looking at fresh ways to engage supporters and highlight the vital link between our shops and the hospice care they fund. We want more people to see the real impact of their contributions and how, together, we can make a difference.

Thank you for being part of this journey. We're excited for what's to come and can't wait to share the next chapter with you!

Pauline

Pauline Lunt
Head of Retail

TALKING SHOPS

WILLOW WOOD HOSPICE RETAIL NEWS

New-look vans - smooth new system



Our Hospice furniture donation vans were looking a little worse for wear—peeling paint and outdated details! But fear not, because we've given them a much-needed makeover. Now, with a crisp, clear, and contemporary new livery, our vans are dressed to impress and delivering the right message (as well as your generous donations). Say goodbye to faded fonts and flaky finishes—our refreshed fleet is now as smart as the service we provide. Keep an eye out for them on the road, and if you've got furniture to donate, give us a call!



Peeling paint
& out-of-date
details



Crisp and clear graphics



Up-to-date information



Smooth new system

With our newly revamped vans hitting the road, we're also rolling out a brand-new, better-than-ever furniture collection system! Previously, donors had to call The Pad to arrange a pickup, but we've streamlined the process to make things faster, easier, and more efficient. Now, instead of ringing The Pad, you can contact our Warehouse and Logistics Manager, Paul King, and his dedicated team directly. This means we can make the best use of our Donation Centre space, plan collections more effectively, and get your generous donations into our stores quicker than ever. For a fast and free furniture collection, get in touch using the details below—Paul and the team are ready to help!

Faster, simpler and more efficient for everyone

About the new system, Paul said: "It's all about better stock distribution, smoother sales, and faster collections."

"This new system isn't just making collections easier—it's set to boost furniture sales and improve stock across all three shops! The PAD and Waterloo will continue to sell furniture, but without the added pressure of handling logistics, freeing them up to focus on providing the best service to our customers."

"Plus, we've simplified our booking system, so it's now easier than ever to donate! We introduced a WhatsApp function which is already been a game-changer, letting people send photos and a description of their donation for a quicker response. From first contact to collection, the whole process can now be wrapped up in as little as three days, depending on what suits the donor—making it faster, simpler, and more efficient for everyone!"



Paul and some of the team showcasing our new-look vans outside Willow Wood Hospice



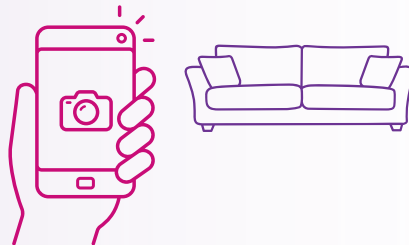
YOUR GUIDE TO...

DONATING FURNITURE FREE FAST SIMPLE



Donating your pre-loved furniture to Willow Wood Hospice has never been easier.

Follow the steps below for a free and fast way to donate your pre-loved furniture to Willow Wood Hospice and in turn, help to raise vital funds towards caring for patients from your local community.



Picture this...

Take photographs of the furniture you'd like to donate.



Tell us all about it...

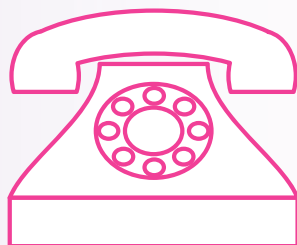
Send the photographs to us, including a short description.



By WhatsApp -
07549 275 158



Via our website
[www.willowwood.org.uk/
furniture-collection](http://www.willowwood.org.uk/furniture-collection)



If in doubt...

For anyone without access to WhatsApp or our website, simply give our team a call...



Mobile: 07549 275 158
Landline: 0161 669 4849

You can find more information about how to donate furniture, what we are able to accept and to request your **free and fast** furniture collection on our website



www.willowwood.org.uk/furniture-collection



Glossop Shop Celebrated Vivienne Westwood



Our Glossop charity shop paid tribute to fashion icon Dame Vivienne Westwood with a bold window display honouring her rebellious style. Volunteer Millie, a huge Westwood fan, came up with the idea. "Being so close to her birthplace, it felt right to celebrate her on what would have been her birthday!" she said. Created by our amazing team, the display was unveiled on 29th March and remained in place until 8th April—Vivienne's 84th birthday.



Despite moving to London, Vivienne never forgot her Peak District roots—her legacy lives on in Glossop, including a striking mural by local artist Deggy.

Shop manager Caroline Lillis said, "Celebrating Vivienne's incredible legacy was a joy. Huge thanks to our team—the display looked magnificent and truly honoured her lasting influence on fashion."



Mural by Deggy

A Special Connection to Vivienne

Vivienne Westwood Limited donated a designer bag to Sara Scott-Rivers, Executive Assistant to our CEO, who lives in Tintwistle—where Vivienne grew up. A big Westwood fan, Sara chose to raffle the bag for Willow Wood Hospice, feeling a meaningful connection as both she and Vivienne had links to hospice care, as Dame Vivienne was cared for at Trinity Hospice in London.

"I think Vivienne would approve," she said. The eye-catching tartan bag, complete with a heavy chain, was hoped to find a loving home while raising vital funds."



Westwood Masterpiece for a Good Cause

The designer bag was featured in our Glossop shop display and raffled to raise funds. Tickets were sold for £1 each, with the winner drawn on 19th April. Look out on our social media pages to find out just how much the bag raffle raised.



TALKING SHOPS

WILLOW WOOD HOSPICE RETAIL NEWS

Willow Wood's Wonderful Windows!

From the extraordinary to the every day, our retail managers and volunteers go to great lengths to mark special occasions through their marvellous window displays. Earlier you read about Glossop and their homage to Vivienne Westwood - here are just a few more of their inspired creations...



College Collab



Tameside College and the Hospice are building stronger ties through a range of initiatives, including students working with our retail team to produce their own fashion show and pop-up shop!



**Tameside
College**

Held at the college, the event will showcase brand-new, on-trend clothing donated to Willow Wood from high street brands. Students will organise and enjoy the show as well as have the chance to buy the clothes at bargain prices!



TALKING SHOPS

WILLOW WOOD HOSPICE RETAIL NEWS

Fashion, Fun and Fundraising

Calling all fashionistas!

It's time to get ready for our fifth spectacular Fashion Show on Friday, 9th of May! This year, we're thrilled to be returning to The Lock (formerly Phoenix City) on Castle Street in Stalybridge. This fantastic two-storey space will give us room for over 100 guests to see our specially-curated seasonal outfits and accessories, as volunteers strut their stuff along the cat walk. And once the show is over... everyone has the opportunity to browse and buy from our amazing collection of both brand-new and pre-loved fashion downstairs! It's your chance to join in with an evening filled with style, sparkle, and unbeatable bargains - all in the aid of patient care at Willow Wood Hospice.

Doors open at 6pm, with the runway show starting at 6.30pm. Guests will enjoy a glass of fizz and can shop the classiest collections at fabulous prices. Tickets are £5 in advance or £6 at the door, including a welcome drink.



Tickets are available through our website, www.willowwood.org.uk/events/fashion-show or our shops and at the Hospice.



This May's fashion show will see more brand-new clothes on offer than ever before! Don't miss out!!

Didn't we do well?

5

Can you believe this will be our fifth Retail Fashion Show fundraiser?!

Last November's fashion show raised a record-breaking £4,000, making the total raised so far a very chic

£13,000.00!

"I love a good charity shop, especially when I'm travelling. When I'm going to cold places, I take nothing — just underwear. On my way from the airport, I ask the driver to take me to a good charity shop, and I buy boots, socks, trousers, jumpers, sweaters, hats and scarves — usually for £30 ... On the way back to the airport, I have it all in a big bag and drop it off at another charity shop."

Dame Helen Mirren —The Sunday Express, August 2010



9th May
2025

SPECIALLY CURATED



BRAND NEW & PRE-LOVED

SUMMER COLLECTION

DESIGNER & HIGH STREET BRANDS

FASHION

Show

Tickets

£5.00 pre-sale

£6.00 on the door

Glass of fizz included 🍷

Friday 9th May 2025

From 6.30pm (Doors open 6pm)

**The Lock,
(formerly Phoenix City),
Stalybridge, SK15 1NX**

FOR TICKETS

Visit our website or scan the QR code

[www.willowwood.org.uk/
events/fashion-show](http://www.willowwood.org.uk/events/fashion-show)



TALKING SHOPS

WILLOW WOOD HOSPICE RETAIL NEWS

Waterloo Shop Bounces Back

Good as New and Open for Business as Usual!

They say lightning never strikes twice, but unfortunately for our Waterloo shop, wayward wheels certainly did! After not one, but two car park prangs left the front window and side of the shop looking a little worse for wear, we were forced to close off parts of the store while repairs took place. But after a spell of scaffolding, sawdust, and sheer determination, we're thrilled to say: we're back to full capacity!

A huge thank you goes to our incredible staff and volunteers, who took it all in their stride, keeping spirits high and business ticking over even with half the shop out of action. Their patience and perseverance have been nothing short of inspiring. We also send out a huge THANK YOU to our loyal customers who supported us when our floor-space was significantly reduce, ensuring the community continued to raise vital funds for Hospice care. And, of course, a massive shoutout to the brilliant builders who worked their magic to restore our shop to its former glory – good as new and sturdier than ever!

Now, with the repairs complete and the shop fully open once more, there's never been a better time to pop in, browse the bargains, and bag yourself a gem. Whether you're after a thrifty find or just fancy a natter with our friendly team, we'd love to see you!

So, here's to smooth parking, solid walls, and a shop that's standing strong – the Waterloo Shop is well and truly back in business!

*As good
as new
2025!*



*Car parking
calamities 2024!*





Willow Wood Hospice Services

Our specialist teams provide person-centred, individualised, high-quality and responsive care for local people living with any life-limiting illness. Through specialist and compassionate care, we support patients and those closest to them, empowering them to enhance their lives, to live as well as possible, for as long as possible.

INPATIENT UNIT (IPU)

In the friendly, warm and safe environment of our IPU, the team provides short-term care and support. We provide complex symptom control and assessment, and periods of palliative rehabilitation to patients for them to manage their illness and be discharged home. We also offer specialist care for patients who are in the final days and hours of their lives.



COMMUNITY SERVICES

Living with a life-limiting illness can be challenging for patients, as well as those closest to them. Through supportive and personalised care, our Community teams empower individuals and their carers to take positive steps towards managing their physical and emotional wellbeing.

Wellbeing Support

The Wellbeing team provides personalised emotional and psychological support through one to-one and group sessions focused on being active, and promoting mindfulness, relaxation, and self-care, and complementary therapies.

Dementia Support

Our specialist Dementia team is dedicated to supporting individuals living with advanced dementia through holistic, person-centred care. Our goal is to support patients to manage their symptoms effectively and live well, and to receive specialist care and support.

Therapy Support

The Therapy team comprises specialists in both Physiotherapy and Occupational Therapy. They provide support to patients with complex needs, giving them advice and support on symptom management with an aim of improving quality of life and reaching meaningful goals.

Family Support

The Family Support team provides emotional, psychological, and spiritual support to patients living with a life-limiting illness, and those closest to them. Our qualified and experienced counsellors are dedicated to addressing emotional needs through individual counselling sessions, closed therapeutic groups and open drop-in sessions, and our spiritual support teams offer a listening ear to patients and those closest to them.

How to access our services

For further information about our services, eligibility or our referral system, please contact the relevant care team at Willow Wood Hospice by calling 0161 330 1100, email info@willowwood.org.uk or visit our website www.willowwood.org.uk



TALKING SHOPS

WILLOW WOOD HOSPICE RETAIL NEWS

Clearance Outlet and Donation Centre: A Hidden Gem



From Warehouse to Thriving Outlet: The Evolution of Willow Wood's Distribution Centre Guided by Paul King – Logistics Royalty!

Our Willow Wood Hospice Distribution Centre has evolved into a dynamic space, not just for sorting and distributing donations but as a welcoming hub where people can drop off items, browse the Clearance Outlet, and support our hospice through their purchases. It's also a key centre for the distribution of furniture, ensuring donations reach the right places efficiently.

Dynamic Space

Since joining in 2023, our Warehouse and Logistics Manager, Paul King, has been busy fine-tuning the way we work, making everything more organised and efficient. "We have developed robust systems to ensuring everything runs seamlessly," Paul says. With over 30 amazing volunteers (plus extra helping hands from corporate groups), the team keeps things running smoothly.

A Hidden Gem

A major highlight has been the launch of our Clearance Outlet, which opened in October 2024 and has gone from strength to strength. Customers love its warm, welcoming feel, and many are coming back with friends.

"We've had fantastic feedback about the shop being warm, clean, and inviting," says Paul. "We're seeing more people returning with friends, which means word is spreading."



Clearance Outlet and Donation Centre: A Hidden Gem



Turning Donations into Support for Hospice Care



More shoppers mean more donations, and we make sure every item is put to the best use.

"When someone donates, we help them unload, check what we can accept, and ask about Gift Aid. Then, items go through our sorting process—some head to eBay if they're valuable, others go to our shops, and some land in the Clearance Outlet."

Paul encourages people to donate good-quality items—something you'd happily pass on to a friend. That way, we can focus our resources on patient care rather than waste disposal.

If you're having a clear-out, bring your donations in bags or boxes for easy handling. We're open for drop-offs Monday to Saturday, 9am to 3:30pm.



A Place That Works—and Feels—Better

Thanks to Paul's warehouse experience, we've made big improvements to how we work. Our eBay team has its own space, we've got designated areas for seasonal clothing, and we even have a section for Fashion Show pieces.

And it's not just behind the scenes—our warehouse now looks and feels better, too. Fresh paint, clear signage, and new gates have given the place a real lift. "Compared to 18 months ago, the place is almost unrecognisable—in a good way."

Get Involved!

With a strong team and a well-organised system, the Clearance Outlet and Donation Centre are making a huge difference to our shops and hospice care. "Everyone works together, and our shop managers have been fantastic. They've embraced the changes and made my job so much easier. The team is stronger than ever, and we're always looking for more volunteers to join us."

Every time you donate, shop, or volunteer, you're helping us provide vital care. Want to get involved? Give us a call on 0161 669 4849—we'd love to hear from you!



Willow Wood Hospice

FUNDRAISING CALENDAR 2025!

Jan-Dec

1st Saturday of each month

Coffee Morning



Jan

8th-17th
Christmas Tree Collection



Feb

14th
NEW Lottery
£25k Rollover



Mar



13th Enterprise Challenge Prize Giving

Apr

25th
Last Night of the Proms



May

9th
Fashion Show

10th & 11th
Flower Festival



17th
Spring Wreath Making



Jun

14th
White Water Rafting



14th
Hospice Choir Summer Concert



Jul

12th

Butterfly Memory Release



Aug

8th

Martin Wild Golf Day



Sep

21st

26th

The 5km Hospice Walk



Enchanted Evening



Oct

17th

1920'S GLITZ GALA BALL



Nov

7th

Fashion Show



15th
Christmas Fair

22nd
Light up a Life
Willow Wood Hospice



30th
Festival of Christmas Music



Dec



2nd-18th
Various dates

Date TBA
Hospice Choir Christmas Concert



6th
Light up a Life
Old Glossop Church



14th
Light up a Life
Albion Church, Ashton



Visit our website for more information

www.willowwood.org.uk/events

Willow Wood Close, Mellor Road, Ashton-under-Lyne, OL6 6SL info@willowwood.org.uk 0161 330 1100
www.willowwood.org.uk Registered Charity No. 1029318



Tracy Minshull, CEO Willow Wood Hospice - a year at the helm

As I approach my one-year anniversary at Willow Wood, I'm both proud and humbled to lead such an incredible organisation.

One early moment stood out to me: a patient's husband said, "Even the smallest things, you do really well." It's a simple statement that perfectly captures the care we provide. This year has been all about relationships. It's been a privilege to connect with our staff, volunteers, trustees, patrons, and the families we serve. I've spent time in our hospice, across the community, and at our retail shops, gaining insight into the vital roles everyone plays.

Our retail shops play a huge role in how patient care is funded here at the Hospice. An incredible 25% to our annual income is delivered by our eight shops – a contribution that is only possible thanks to the generosity of the community we serve — through donations, shopping, and volunteering. Every item donated and every hour volunteered plays a vital part in supporting the care we deliver.

I've also focused on building strategic partnerships, including becoming Deputy Chair for the Palliative and End of Life Care Improvement Group. These connections help ensure our services remain accessible across Tameside and Glossop.

I also joined fellow Greater Manchester Hospice leaders to lobby MP's in Parliament to raise awareness for the funding plight of hospices, and to keep hospice care at the forefront of the minds of our elected representatives.

We've welcomed four new trustees, launched quarterly engagement sessions, and co-designed our Five-Year Strategy, which will be published in June. A big thank you to all who contributed — your input has shaped our future.

Looking ahead, we'll continue building strong relationships, delivering exceptional care, and ensuring Willow Wood thrives for years to come. Thank you for being part of our journey, I hope you will continue to support Willow Wood Hospice, enabling us to care for those closest to you — together we care.

Tracy

TALKING SHOPS

WILLOW WOOD HOSPICE RETAIL NEWS

Volunteer with Us and Make a Difference!



Looking for a rewarding way to give back to the community? Why not volunteer at one of our 8 charity shops? Whether you're sorting donations, helping out on the shop floor, or even assisting our delivery drivers, there are plenty of ways to get involved and make a real difference.

We have shops in the heart of our communities including Glossop, Ashton, Stalybridge, Hyde, Denton and Dukinfield—each offering a friendly, supportive environment where your time and skills can help us raise vital funds for Willow Wood Hospice.

Whether you are sorting donations behind the scenes to being a driver's mate on our delivery vans, every role plays an essential part in supporting the hospice. Plus, it's a fantastic way to meet new people and learn new skills!

Interested? Get in touch and start your volunteering journey today—visit our website and let us know that you'd like to get involved.



Many hands make light work

We need your help!

Volunteer now!

Make a difference today!



Latest Volunteer Vacancies

www.willowwood.org.uk/vacancies/volunteer-vacancies

SCAN ME



Find out more about the Culture of Dying Matters

Because the way we talk about Dying Matters.



Dying Matters

**Dying Matters Week 2025
5th - 11th May**

Visit one of our events in Tameside and Glossop this May!

We are sending out a community-wide invitation for members of the public, colleagues from health and social care across both acute and community teams, faith leaders, funeral directors, and other charities to join us in learning about the culture of death and dying.

Hosted by our Hospice teams, join us at our interactive market place at Willow Wood Hospice, or at one of our community focused events, and help to continue opening up the vital conversation about death and dying.

For more information about the event contact
education@willowwood.org.uk or
call 0161 330 1100



or visit our website www.willowwood.org.uk/dying-matters

Tuesday 6th May	POP-IN SESSION The Hub, Hattersley 9.30-12.00
Wednesday 7th May	POP-IN SESSION Together Centre, Dukinfield 12.00-2.00
Thursday 8th May	BOOK FREE TICKETS ONLINE Willow Wood Hospice Session 1: 12.00-1.30 Session 2: 2.00-3.30 Guest Speaker Mohamed Seedat - Lead Chaplin at Tameside Hospital
Friday 9th May	POP-IN SESSION Tameside Wellness Centre, Denton 3.00-5.00
Saturday 10th May	POP-IN SESSION The Bureau, Glossop 10.00-12.00



Willow Wood Hospice, Willow Wood Close, Mellor Road,
Ashton-under-Lyne, OL6 6SL 0161 330 1100
info@willowwood.org.uk www.willowwood.org.uk
Registered Charity No. 1029318



Dying Matters

Shop Focus - The Pad, Stalybridge



Celebrating successes of our PAD shop in Stalybridge

For over 10 years, the Purchase and Donate (PAD) shop in Stalybridge has been a cornerstone of the community, offering a unique shopping experience while raising vital funds for Willow Wood Hospice.

Specialising in children's toys and clothing, bric-a-brac, and furniture, last year this bustling shop generated around 30% of our shops total annual income – which directly supports patients from Tameside and Glossop with life-limiting illnesses in our care.



A team that makes it happen

The PAD is a thriving operation, thanks to a dedicated team of staff and volunteers who work tirelessly to keep things running smoothly. Manager Michelle Baxter is proud of the shop's impact and the commitment of those who support it.

"We are grateful to have a wonderful team who work incredibly hard," Michelle shares. "We're lucky to receive fabulous, high-quality donations, and we have a wide range of customers who support us. Knowing that we make a significant contribution to the care of patients at the Hospice makes it all worthwhile."

A treasure trove of items

The PAD shop offers something for everyone. On the ground floor, customers can browse a selection of furniture - including sofas, beds, kitchen tables, coffee tables and mirrors – as well as books, picture frames and even jigsaw puzzles. The dedicated bric-a-brac section is a treasure trove of unique and quirky finds—perfect for those who love discovering hidden gems.



Upstairs, the children's section has seen exciting developments. Since the café closed, Viv and her team have expanded the space to offer even more for families."

We wanted to make the most of the space and create a welcoming environment for children and their parents," says Viv. "Now, we have an even wider range of children's items, from teddies and toys to clothes and prams. It's fantastic to see families coming in and finding great-quality items at affordable prices."



Pay the PAD a visit

The PAD shop wouldn't be the success it is without the generosity of donors and customers, and every purchase made directly helps us provide essential care to those who need it most.

If you're looking for quality pre-loved furniture, you'll still find a fantastic selection at the PAD.



Whether you're hunting for a bargain, donating items or simply browsing, the PAD shop is a special place where the community comes together to make a difference. Thank you for your continued support!

OPEN

THE PAD

13/15 Shepley Street
Stalybridge
SK15 2AH

Open for purchases and
donations

Monday to Saturday
from 9am to 4pm.

Give a teddy a new home

A visit to the Purchase and Donate (PAD) shop in Stalybridge just got even more heartwarming, thanks to a charming new initiative in the children's section—teddy bear adoptions!



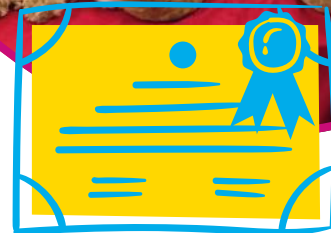
Customers can now 'adopt' a pre-loved teddy bear, each with its own name and handmade adoption certificate, inspired by Paddington himself. The idea came from 24-year-old volunteer Jay Kettlewell, who joined the shop in December 2024. Jay wanted to bring a fun, personal touch to the shop's teddy collection.

Working with Viv and the team, Jay launched the display on 24th March, giving each bear a personality. For teddies that arrive without outfits, the team adds clothing to make them even more special.

"This started as something lovely for children, but anyone can adopt a teddy!" Jay shared. Her mum Anita, who also volunteers in the children's section, has been part of the effort, making it a sweet family project.

Teddies come in various sizes and prices, and all proceeds support the shop's mission. Donations of teddy bears are always welcome to keep the adoption scheme going.

Pop upstairs in the PAD shop—your perfect bear might be waiting!



"My journey so far has been really lovely"

Hi, I'm Suzanne, a Relief Manager with Willow Wood's retail team since January.

My role takes me across Tameside and Glossop, covering our charity shops when managers are away—and I love it!



Every shop has its own personality, shaped by its volunteers, customers, and community. Meeting new people, hearing their stories, and working with our fantastic volunteers has been a real joy.

At first, I carried my little 'bible' of notes everywhere, learning the tills, Gift Aid, and how each shop runs. But as I've settled in, I've found my rhythm. My background is in fashion and styling, so I enjoy making our shops look great and creating inviting displays.

The PAD shop in Stalybridge has been a highlight—it reminds me of my studio days, with furniture constantly moving in and out. I thrive on that buzz, but even in quieter moments, there's always plenty to do.

What makes this role special is the connection to the Hospice. Many customers and volunteers have personal links, donating items from loved ones or giving their time in gratitude. It's humbling to be part of something that means so much to people.

Having grown up in Stalybridge, I've always supported Willow Wood, and now I feel privileged to represent it. Whether you're donating, shopping, or just stopping for a chat—I look forward to meeting you in one of our shops soon!

Suzanne

x



Many hands make light work



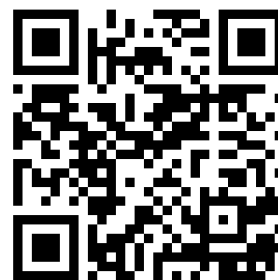
Ever considered working in a charity shop? Our opportunities are open to those with experience as well as those with transferable skills. No two days are the same — you'll enjoy variety, meet new people, and make a real impact in your community.

Keep an eye on our vacancies page for upcoming roles in a Willow Wood charity shop near you!

Keep an eye on our job vacancies page for news on new opportunities!

www.willowwood.org.uk/vacancies/

SCAN ME



Together we care

BEREAVEMENT SUPPORT HUB

A safe space to connect

Quarterly
drop-in
support hub

Are you grieving for someone who
received Willow Wood Hospice care?

Connect with our Family
Support team for

- Reassurance
- Guidance
- Information
- Signposting



Could you benefit from meeting our Family
Support team to navigate bereavement,
spiritual, and emotional support?

Join us for one of our quarterly drop-in
sessions at Willow Wood Hospice.

For more information, including the dates
for our drop-in hub, visit our website
[www.willowwood.org.uk/bereavement-
support-hub](http://www.willowwood.org.uk/bereavement-support-hub)



Scan here



Waterloo - the whole community cares

"The Hospice's Waterloo shop is local to us, and we want to support local businesses and organisations as best we can,"



Emma, Dave and Kellie in our Waterloo shop

Our heartfelt thanks go out to the incredible team behind Waterloo News, who have once again shown amazing community spirit by supporting our Bunny Hop fundraiser.

Founded in 2019, Waterloo News is a Facebook page run by local residents Dave Howarth and Lee Woods, providing updates and supporting good causes in the Waterloo area of Ashton-under-Lyne. They've been joined by Emma Jones from Perry Jones Funeral Services, just a stone's throw from our Clearance Outlet and Donation Centre and the Waterloo shop. Together, this team has been key in gathering Creme Egg donations for the Bunny Hop for three consecutive years.

This year, they have delivered an egg-straordinary 445 eggs to the Willow Wood Hospice shop in Waterloo, bringing their overall total to over 1,400 eggs over 3 years—a true reflection of the generosity of the wider Waterloo community. These sweet treats are given to every child taking part in the event, rewarding them for hopping for the Hospice.

"The Hospice's Waterloo shop is local to us, and we want to support local businesses and organisations as best we can," said Dave. Emma added, "I'm very aware of the donations the Hospice relies on to keep going, and it's great that we can support an organisation so close to us."

We are deeply grateful for their ongoing support, which plays a vital role in our fundraising efforts. Thank you, Dave, Lee, and Emma—you truly embody the spirit of community!

You learn something new every day!

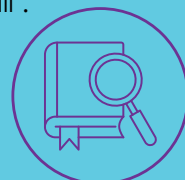
We use the words 'charity' and 'shop' every day but where did they come from?!!

Charity

According to the website Etymology.com the word charity comes from late Old English, "benevolence for the poor," also "Christian love in its highest manifestation," from Old French charité "(Christian) charity, mercy, compassion; alms; charitable foundation" (12c.), from Latin caritatem (nominative caritas) "costliness; esteem, affection," from carus "dear, valued"

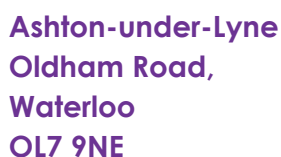
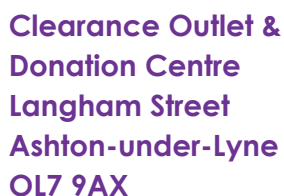
Shop

Shop - c. 1300, "booth or shed for trade or work," perhaps from Old English scoppa, a rare word of uncertain meaning, apparently related to scypen "cowshed," from Proto-Germanic *skoppan "small additional structure". Or the Middle English word was acquired from Old French eschoppe "booth, stall".





Bargains on your doorstep



**Visit our website for more information,
for full addresses and opening times.**



Together we care

76% of the £3.6m needed each year to provide our essential services come from YOU - OUR COMMUNITY!

THANK
YOU

Our eight shops help the community cope with the rising cost of living by offering good quality items at affordable prices



Our shops give people a real glimpse into what we do – they're a way in, a gateway to the services we offer for everyone in the community

At Willow Wood, donated items are reused, resold, or recycled—keeping thousands of items out of landfill each week and helping to fund vital patient care



Curious finds and quirky treasures!

There is something for everyone at Willow Wood Hospice shops. Here are just a few examples from across our stores...



At our Reddish Lane shop
Mid-century Modern Tiko
Coffee set! £12.50



Found in our Glossop shop
19th Century Famille Rose
Celadon Porcelain Plate
(with a little damage) £20.00



Natwest Pocket Money Pigs!
Listed on our ebay shop!



A peach of a donation
in our Ashton shop - a
super useful vintage
apple peeler! £8.50



From the Clearance Outlet
Centre this immaculately
restored mangle! £75 inc
delivery!





Flower Festival 2025

at Willow Wood Hospice

Visit our
website for
more
information



Saturday 10th May 10am - 4pm

Sunday 11th May 11am - 4pm



Proceeds donated to Willow Wood Hospice Registered Charity No. 1029318

Spring and Summer Events

visit www.willowwood.org.uk/events

 **CLEARANCE OUTLET & DONATION CENTRE**
Langham St, Ashton-under-Lyne OL7 9AX

Have fun & grab a bargain!

FUN FAMILY OPEN DAY

Saturday 26th April
10am til 3pm

Raffle & tombola!!

A great chance to find out about volunteering!

- Face painting
- Woody the Bear
- Tombola
- Ice-cream
- Cakes & more...
- Free goodie bags for first 50 kids!

Willow Wood Hospice
www.willowwood.org.uk
Registered Charity No. 1029318



 **WILLOW WOOD HOSPICE**

Spring WREATH-MAKING

Saturday 17th May 2025 at 4pm
In The Hive at Willow Wood Hospice

Join today



£35 pp including welcome drink and nibbles

Led by floral expert Zoe Smith from The Flower House, Marple

www.willowwood.org.uk/events/spring-wreath-making
Willow Wood Close, Mellor Road, Ashton-under-Lyne, OL6 6SL
info@willowwood.org.uk 0161 330 1100 www.willowwood.org.uk
Registered Charity No. 1029318





MARTIN WILD GOLF DAY

Friday 8th August 2025



Ashton-under-Lyne Golf Club

Four Ball
only £300

1pm
Shotgun
Start

3/4
Handicap

Mixed
teams
welcome

Team Prize
Table from
1st to 6th

Register today

www.willowwood.org.uk/events/golf-day



Arrival
Brunch

9th & 18th
Refreshments

Evening Hot
Buffet

Sponsorship
packages available

Autumn Events

www.willowwood.org.uk/events



Willow Wood Hospice Walk 2025

Making Memories Together - Fundraising for Care

Sunday 21st September, 12pm

Sign up
today!

SCAN
ME!



Suitable for all ages & four-legged friends too!

Pink or green?



Dress Code: Come as your are or
embrace the WICKED theme!

5km Fun
Family Walk

Stamford Park, the
boating lake &
Chadwick Dam,
Ashton

www.willowwood.org.uk/events/walk



Call for donations!!!

Hand-le It Over: Give Your Old Handbags a New Home!



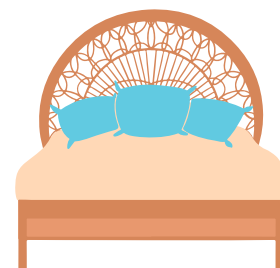
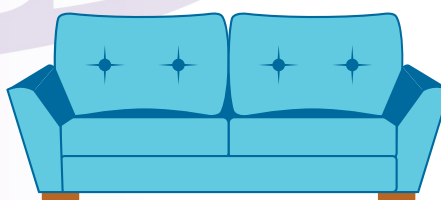
We're calling on the community to donate pre-loved bags, purses, totes, and clutches for a great cause. Your donations will support patient care at Willow Wood Hospice—one handbag at a time!

If you haven't used it in a year, it's time to let it go! Drop donations at any of our eight shops and spread the love.

Scan the QR code or visit www.willowwood.org.uk/shop-locations to find where your nearest Willow Wood shop is located.



Don't forget - we collect your furniture free and fast!



Treating yourself to some new bedroom furniture, or a dining table and chairs? Please consider donating the furniture you are replacing to Willow Wood Hospice - we'll even pick them up for free!

To donate your **good quality, reusable furniture**, visit www.willowwood.org.uk/furniture-collection or scan the QR code

