



# PRODUCT CATALOGUE

**2026**



Essential Cleaning & Catering  
Supplies, Delivered Right!

T: 01934 311621

M: 07399 132496

W: [lbksupplies.co.uk](http://lbksupplies.co.uk)

# Contact Us

The LBK team are here to help, you can come and see us at our trade counter, give us a call or drop us an email for assistance.

## Drop by our Trade Counter

LBK Supplies  
Unit 7 Fairfax Business Park  
Oldmixon Crescent  
Weston-super-Mare  
BS24 9AW



## Get in touch



01934 311621



WhatsApp - 07399 132496



sales@lbksupplies.co.uk



www.lbksupplies.co.uk



## Follow Us



facebook.com/LBKsupplies



instagram.com/lbksupplies

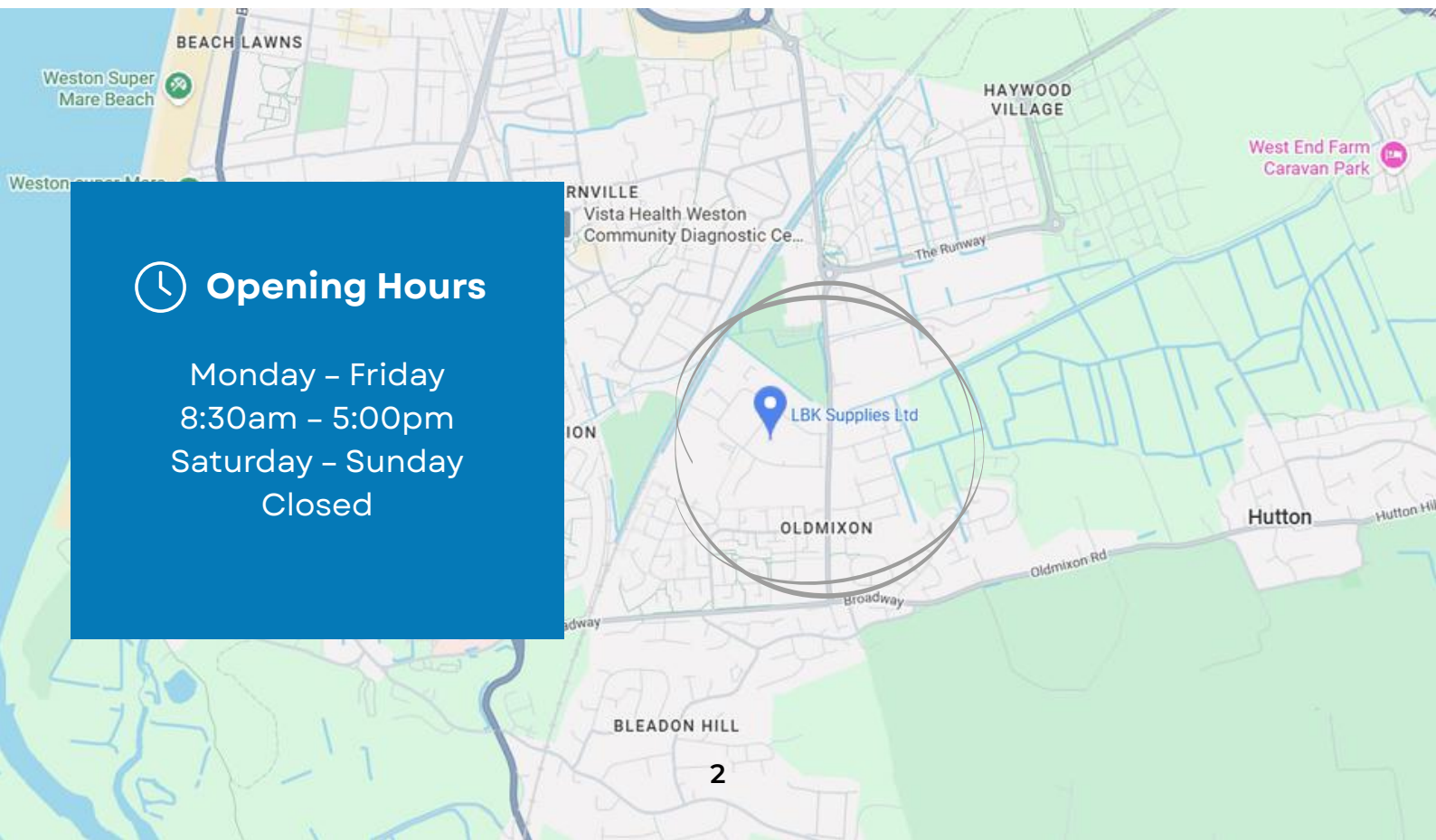


linkedin.com/company/  
lbk-supplies



## Opening Hours

Monday – Friday  
8:30am – 5:00pm  
Saturday – Sunday  
Closed





# Welcome to LBK Supplies!

We're so glad you're here. As a proud family-owned business, we know how important it is to have products you can rely on – whether you're scrubbing down a kitchen or setting the table for a crowd. This catalogue is filled with carefully selected cleaning and catering essentials that we trust in.

## About Us

We are a family-owned business based in the heart of Weston-super-Mare. Established in 2023, bringing over 30 years of industry experience, ensuring exceptional service and an extra level of care that sets us apart.

Choosing LBK Supplies means partnering with a team that genuinely cares about your success. Our family values are at the core of our business, driving us to go the extra mile for our customers. We believe in fostering strong partnerships and are committed to supporting your business with the best supplies and service.

LBK evolved from a simple vision to deliver:

- **Quality Brands & Products**
- **Competitive Prices**
- **Delivered with Care**
- **Consistent Support & Friendly Service**

### Your Cleaning & Catering Supplies Partner!



**Janitorial Products**



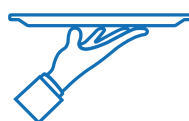
**Cleaning Products**



**Paper Hygiene**



**Disposables**



**Bar & Front of House**



**Kitchen Supplies**

# Our Products

## The best brands from us for your business

At LBK Supplies, we collaborate with industry leading brands and manufacturers that we know can help to deliver our vision.

We are proud to be a distributor and stockist for Cleenol, Robert Scott, DPS Tableware, Neville UK, Arc UK, Poppies Europe and many more major brands – bringing our customers commercial grade products known for their reliability and performance.

Our supply partnerships are carefully chosen so you benefit from expertly engineered solutions that meet professional standards, while still enjoying the personal service and competitive pricing that a family-owned business can offer.



## Our Commitment

### Expert Knowledge

Our extensive knowledge of catering and cleaning supplies ensures that you receive the best advice and products suited to your needs.

### Exceptional Quality

We stock only the highest quality supplies, guaranteeing reliability and satisfaction.

### Personalised Service

We take the time to understand your business and provide customised solutions that help you thrive.

### Reliability

Our prompt and dependable service means you can count on us to deliver what you need, when you need it.

### Delivered With Care

Our drivers take the utmost care in ensuring your orders arrive on time, in full and in one piece with special travel crates to protect your crockery, glassware and cleaning chemicals.

### Competitive Pricing

We continuously review and benchmark our product range to ensure that choosing us not only meets your quality standards, but also makes financial sense for your business.

# Top Brands

## Leading brands for the everyday cleaner and caterer

At LBK Supplies, we only stock trusted industry-leading brands that professional caterers and cleaners rely on every day. From reliable cleaning solutions to durable catering essentials, our ranges are carefully selected to deliver the performance, quality, and value that hospitality and cleaning professionals love.



Looking for replacements or a specific brand or range you have seen - Give us a call or send us a photo so we can source it for you.

# Tableware

## for every venue

### When presentation and service is everything

We provide restaurants, cafés, bars, and catering venues with a vast range of professional tableware designed to enhance your service and presentation.

Whether you're looking for:

- **Glassware** – from classic tumblers to elegant stemware
- **Crockery** – durable, stylish, porcelite to fine bone china
- **Cutlery** – practical 18/0 parish designs to premium 18/10.
- **Table Accessories** – everything you need to create the perfect setting



We understand that every venue has its own style, menu, and budget. That's why we work closely with you to recommend the most suitable options from our extensive catalogue.

With so many different designs, finishes, and price points available, the best way to find the right fit is to contact us directly. Our team will guide you to the most practical, stylish, and cost-effective tableware solutions for your business.



Get in touch today and let us help you set the perfect table.

# Product Contents

## *Janitorial Products*

---

- 09** Cloths, Sponges & Scourers
- 12** Dusting & Vacuum Bags
- 13** Floorcare
- 17** PPE
- 18** Disposable & Reusable Gloves
- 19** Waste Management
- 21** Washroom Equipment

## *Cleaning Products*

---

- 24** Evo - X2 System
- 26** Easidose System
- 28** General Cleaning
- 32** Machine Cleaning
- 33** Warewashing
- 35** Laundry
- 36** Washroom
- 38** Toiletries
- 39** Eco Cleaning

## *Paper Hygiene*

---

- 43** Raphael Washroom Systems
- 45** Paper Hygiene Products & Dispensers
- 47** Bathroom Accessories

## *Disposables*

---

- 48** Napkins
- 49** Hot Drinks
- 50** Cold Drinks
- 51** Sundries
- 52** Cutlery
- 53** Food Packaging

## *Bar & Front of House*

---

- 56** Cocktail & Bar Accessories
- 58** Ice Buckets & Wine Coolers
- 59** Speed Rails, Pourers & Measures
- 60** Bar Knives, Boards & Mats
- 61** Front of House
- 63** Table Service

## *Kitchen Supplies*

---

- 66** Kitchen Consumables
- 68** Knives, Utensils & Boards
- 74** Sauce Bottles & Food Storage
- 75** Safety & First Aid

## *Other*

---

- 76** Deliveries and Collections
- 77** Returns & Cancellations

# JANITORIAL PRODUCTS

---

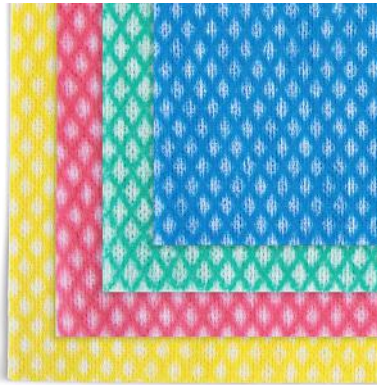


## *Janitorial Products*

---

- 09** Cloths, Sponges & Scourers
- 12** Dusting & Vacuum Bags
- 16** Floorcare
- 17** PPE
- 18** Disposable & Reusable Gloves
- 19** Waste Management
- 21** Washroom Equipment

**MOST POPULAR**



**Handy Lightweight Cloths (Pack 50)**

The essential Handy Lightweight cloth. A great value, lightweight and disposable multipurpose cleaning wipe, which is perforated so it provides good absorbency and dirt collection. The improved non-woven cloth performs better as it has a more open, perforated structure making it stronger and more absorbent. It has also been tested and meets food contact safe standards.

Size: 42 x 35cm

**RS-104390**

Available colours:



**Handy Roll 350sht (Box of 2)**

A lightweight and semi-disposable all-purpose wipe on a roll, to provide good absorbency and dirt collection. The Handy roll contains 350 sheets, is food contact safe. Size 22 x 37 cm

**RS-104628**

Available colours:



**Ocean Wipe Cloths (Pack 50)**

A general purpose medium weight cleaning wipe. Made from a viscose and polyester blend. Ocean wipes are food contact safe. Size 50 x 36 cm

**RS-100233**

Available colours:



**Velette Wipe Cloths (Pack 25)**

A general purpose, heavyweight wipe with great absorbency, with a antibacterial agent which inhibits bacterial growth and odours on the wipe. Size 50 x 35 cm

**RS-100245**

Available colours:



**Microfibre Cloths (Pack 10)**

All round microfibre cloth offering a fast, hygienic and environmentally friendly alternative, Can be washed repeatedly. Size 40 x 40 cm

**RS-101137**

Available colours:



**Microglass Cleaning Cloths (Pack 10)**

Designed as an alternative to chamois for smear-free cleaning of glass and stainless-steel surfaces. Now made from 82% recycled material. wipe. Size 40 x 40 cm

**RS-101216**

Available colours:



**Hi-absorb Microfibre Cloths (Pack 5)**

Hi-absorb is a heavyweight microfibre cloth made from polyester and polyamide yarns, coated with polyurethane to give it a soft and strong chamois-like feel. Size 35 x 38 cm

**RS-103986**

Available colours:





### Washing Up Brush (Single)

A good quality brush with a shaped bristle head, suitable for general washing up in a professional environment. Supplied in assorted colours. Size 24 cm

**RS-104969**



### Washable Nail Brush (Single)

Double-sided plastic bristle nail brush, made from 20% recycled plastic. Supplied in assorted colours. Size 9 x 4 cm

**RS-104946**



### Dish Cloths (Pack 10)

A medium weight circular-knitted traditional dishcloth which is strong and absorbent, made in the UK from 100% recycled material. Size 45 x 30 cm

**RS-100103**

Available colours:



### Chunky Dishcloth Colour Coded (Pack 10)

A quality cloth for general use, made with a unique knitted process to be twice as thick as standard cloths and extremely hardwearing. Made in the UK from 100% recycled material. Size 40 x 20 cm

**RS-100856**

Available colours:



### Barista Cloths (Pack 10)

A heat resistant, food safe, antibacterial cloth. It can be used on steam wands and other heated coffee machine components. Size 42 x 33 cm

**RS-104182**



### Tea Towel Terry Check (Pack 10)

A high quality terry tea towel giving excellent absorption. Suitable for use in general catering environments. Comes in assorted colours. Size 45 x 70cm

**RS-102769**



### Coloured Checked Tea Towels (Pack 10)

A standard quality tea towel, suitable for general use in catering environments. Comes in assorted colours of blue, green and red. Size 43 x 68 cm

**RS-102751**



### Glass Cloth Linen Union (Pack 10)

A quality cotton and linen mix glass cloth which gives a professional smear-free finish. Available in three colours. Size 50 x 76 cm

**RS-102777**

Available colours:



### Natural Heavy Duty Oven Cloth (Single)

A professional quality plain yarn oven cloth made from 100% recycled fabric for use in catering environments. Made from recycled fibres. Size 48 x 80cm

**RS-105101**



### Sponge Scouring Pads (Pack 10)

Essential sponge scouring pads ideal for easy removal of stubborn dirt, and for general cleaning and wiping. Size 14 x 4 x 9 cm

**RS-102418**



### HiPUR Sponge Scourers (Pack 10)

Hi-PUR is a sponge scourer with a polyurethane (PUR) coating that scrubs away stubborn dirt and stains while being gentle on hard surfaces. Size 6 x 14 x 4 cm

**RS-104448**



### Green Nylon Scouring Pads (Pack 10)

A standard weight scouring pad designed to easily remove tougher dirt. Suitable for use in catering and general cleaning. Made from 40% recycled material. Size 23 x 15 cm

**RS-102446**



### Stainless Steel Scourers (Pack 10)

40gm spiral scourers made from stainless steel, great for all-round use. Stainless Steel Scourer will not rust. (Do not use on non-stick and delicate surfaces.). Size 15 x 38 x 5 cm

**RS-102677**



### Galvanised Scourers Medium (Pack 10)

40gm circular scourers made from fine metal mesh, ideal for cleaning burnt-on stains from grills, barbeques and metal pans. (Do not use on non-stick and delicate surfaces.) Size 18 x 21 x 10 cm

**RS-102589**



### Copper Scourers (Pack 20)

20gm circular scourers made from fine metal mesh, coated with copper and ideal for use on more delicate surfaces as it is less likely to scratch. Size 15 x 33 x 9 cm

**RS-102545**



### Heat Resistant Griddle Pad Holder (Single)

Griddle Holder for use with the griddle screens and scourers for effective cleaning of griddles and hot plates.. Size 14 x 9 cm

**RS-101096**



### Griddle Screens (Pack 10)

The abrasive screen makes light work of burnt on food, drawing up grease into the pad.. To be used with a plastic or metal holder. Size 14 x 10cm

**RS-102438**



### Griddle Scouring Pads (Pack 10)

The thick griddle pad absorbs the dirt and grease. Can be rinsed out.. To be used with a plastic or metal holder. Size 14 x 10 cm

**RS-102436**



### Wire Grill Brush with Soft Grip Handle (Single)

Wire grill brush with 18 sets of large carbon-steel bristles to remove tough dirt and grime with ease. A ergonomic grip ensures comfortable use.

**UR-HS977**



### Griddle Brick (Single)

An abrasive brick which will clean flat griddles effectively without scratching or damaging the surface. Can be used on hot griddles. Size 20 X 10 X 9 cm

**RS-103975**



### Erase All Magic Sponges (Pack 10)

A multi-surface cleaning sponge which quickly removes stubborn marks from most surfaces without the need for chemicals. Size 6 x 10 x 3 cm

**RS-102428**



### Golden Magnet Dust Maid (Single)

With a V-shaped fringe head which makes it ideal for use on difficult dusting areas like pipes and blinds, as well as a general handheld duster. Its short handle can also be attached to an Alloy Telescopic Handle to reach higher areas. Size 17 x 45cm

**RS-101413**



### Cobweb & Dust Collector Attachment (Single)

Close-bristled, wire frame brush ideal for reaching and trapping dust and cobwebs. Fits onto the Alloy & Ergo-Globe Telescopic Handles. Size 30 x 13cm

**RS-101534**



### Alloy Telescopic Handle 75-135cm (Single)

A lightweight, twist-lock telescopic handle with cone fitting that extends 75-135cm. Size 75 - 135cm

**RS-103161**



### Flexi Cleaning Tool (Single)

A handheld tool which bends into shape to clean the trickiest places. To be used with the Flexi microfibre and Flexi disposable microfibre sleeves. Can be used with our range of cone fitting telescopic handles. Sleeves and tool sold separately. Size 72 x 6 cm

**RS-103368**



### Flexi Microfibre Sleeve (Single) **RS-100684**



### Flexi Chenille Sleeve (Single) **RS-104700**



### Flexi Disposable Microfibre (Pack 12) **RS-104181**



### Ergo-Globe Telescopic Handle Cone Fitting (Single)

Ergo-Globe telescopic handle with push fitting for use with Flexi or Cobweb Brush. Extends from 90 to 162cm.

**RS-103164**



### Yellow Duster Heavyweight (Pack 10)

A traditional heavy weight cotton-rich fabric duster which is good for all-round general use. Size 50 x 40 cm

**RS-103040**



### Replacement Dust Bags for Numatic NVM1C (Pack 10)

Keep your Numatic vacuum performing at its best with double micro filtration bags, compatible for models using NVM-1B and NVM-1C bags. Designed for strong, reliable performance, they're perfect for home, office, and commercial cleaning. Works with popular Numatic models including Henry - HVC200, HVR200. James - JVC235, JVR225. Commercial - NV200, NV225, NV/SE250/350.

**SO-3742**



### Replacement HepaFlo Dust Bags NVM1CH (Pack 10)

The 3 layers of materials help increase the filtration meaning that what goes in stays in. Along with an innovative self-seal tab, the bag is locked up keeping the dust secure meaning no allergens or bacteria will disperse when emptying your Hoover. Suitable for Henry, Henry 'Xtra, Henry Hound, Henry Turbo, and James plus all 180 and 200 numatic machines. Ideal for commercial and industrial environments.

**SO-37420**



### Economy Combination Floor Tool 32mm (Single)

Economy Combination Floor Tool-32mm. If your floor tool is worn or damaged, then it is time for a replacement. A new floor tool will get your vacuum cleaner working like new again. Vacuum Cleaner Floor Tool Head Attachment - Made To Fit Numatic Henry, Hetty, James, David, Harry, Basil Models.

Size: 305 x 32mm

**SO-37470**

**MOST POPULAR**



**PY Exel Socket Mop Head (Single)**

A traditional yarn mop with our Exel push fitting, designed to avoid the mop slipping on the handle whilst wringing. Absorbent recycled PY yarn is suitable for smoother floor surfaces like laminate or lino flooring. Available in various colour coded sockets. Made in UK. Fits Exel, Hygiene and Wooden handles. Weight: 200g

**RS-102266**

Available colours:



**Hygiemix Socket Mop Head (Single)**

Made from a unique blend of bleached cotton and synthetic yarns. The stayflat band holds the shape enabling the mop to cover a larger floor area. Washable up to 60 degrees. Fits Hygiene and Wooden handles. Weight: 250g

**RS-103064**

Available colours:



**Big White T1D Large Socket Mop Head (Single)**

A lightweight, super-absorbent and semi-disposable mop made by recycling offcuts of a spunlace fabric that would otherwise end up in landfill, and so reusing a waste product. Fast-drying and low-linting, ideal for smaller areas. Weight: 137g

**RS-102213**

Available colours:



**Abbey Hygiene Handle (Single)**

A versatile aluminium handle that can be used with mops, washable brushware and squeegees. Available with handle grip in five colours for easy colour coding. Size: 125cm

**RS-103132**

Available colours:



**Kentucky Prairie Hygiemix Mop Head (Single)**

Made from a blend of bleached recycled cotton and synthetic yarns, with a screw thread fitting. The stayflat band keeps the yarn flat on the surface covering a larger area, whilst the looped end yarn prevents tangling. Fits Hygiene and Wooden handles. Weight: 450g

**RS-103007**

Available colours:



**Big White T1D Large Prairie Mop Head (Single)**

A lightweight, super-absorbent and semi-disposable Prairie mop made by recycling offcuts of a spunlace fabric that would otherwise end up in landfill, and so reusing a waste product. low-linting alternative to cotton mops, and this size is ideal for smaller areas. Weight: 244g

**RS-102238**

Available colours:



**Ergo-globe Telescopic Handle Drilled (Single)**

Colour coded Telescopic handle with drilled fitting for use with flat mop frames. Size: Extends 90 to 162cm

**RS-103152**

Available colours:





**45cm Floor Squeegee Heavy Duty (Single)**

A professional, 45cm plastic squeegee with two foam rubber blades, ideal for fast cleaning and drying of all hard floors. For use with Hygiene handle. Size 45 cm

**RS-101499**

Available colours:



**Abbey Hygiene Handle (Single)**

A versatile aluminium handle that can be used with mops, washable brushware and squeegees. Available with handle grip in five colours for easy colour coding. Size: 125cm

**RS-103132**

Available colours:



**Ergo-globe Telescopic Handle Drilled (Single)**

Colour coded Telescopic handle with drilled fitting for use with flat mop frames. Size: Extends 90 to 162cm

**RS-103152**

Available colours:



**Microtex Mop System - Metal frame 24cm (Single)**

Microtex flat mop frame with a collar and grip fitting. Part of the Microtex Flat Mop Kit. Fits Hygiene and Telescopic Handle Drilled Fitting handle. Frame Type: Hook and loop. Size: 24 x 8cmcm

**RS-103374**



**Microtex Mop System - Flat Mop White 30cm (Single)**

30cm Microtex flat mop is made from microfibre. Its flat surface is effective in picking up dirt from floor surfaces. It's Velcro backing attaches onto the Microtex flat mop frame. Flagged for colour coding. Size: 30 x 16 cm

**RS-100638**



**Microtex Mop System - Flat Scrub Pad 34cm (Single)**

A Velcro-style microfibre flat mop with tougher scrub stripes for more abrasive cleaning of hard and safety floors. It is washable, can be used for both bucket and spray mopping, and features four coloured tabs. Size: 34 x 17cm

**RS-100696**



**Microspeedy Break-Frame 40cm**

A plastic break-frame as part of the Microspeedy Kit, ensures easy fitting and removal of the flat mop. Fits Hygiene and Telescopic Handle Drilled Fitting handle. Size: 43 x 15 cm

**RS-104773**



**Microspeedy Microfibre Flat Mop Economy Pad 40cm**

An economy value microfibre flat mop with scrub stripes for lifting tougher dirt. Features pockets and ears to fit both Uniko and Speedy frames. Flagged for colour coding. Size: 46 x 15 cm

**RS-100657**



**Microspeedy Microfibre Flat Mop Scrub Pad 40cm**

A tougher microfibre flat mop with scrub stripes for more abrasive cleaning of hard and safety floors. It is washable, can be used for both bucket and spray mopping, and features four coloured tabs. Size: 43 x 15 cm

**RS-100655**



### 14L GB Bucket & Wringer (Single)

Made in the UK and features a solid compact design, matching colour-coded wringer with high neck sieve, black handle, mop holder and overspill holes. Size 31 x 37 x 30 cm

#### RS-104025

Available colours:



### 20L Microspeedy Bucket & Wringer (Single)

A lightweight wheeled bucket with removable wringer and divider. This bucket is designed to be used for damp mopping with microfibre mops. Ideal for fast response cleaning. Size: 27 x 73 x 61 cm

#### RS-101248

Available colours:



### 25L Buffalo Bucket & Wringer (Single)

Made from hardwearing polypropylene with dirt retaining sump and curved shape to avoid spillage. Handle-operated wringer suitable for use with Kentucky mops 300-450g. Size: 32 x 50 x 80 cm

#### RS-101253

Available colours:



### Lobby Dustpan & Brush Set (Single)

The long handle removes the need to bend down when collecting debris, reducing the risk of back strain. Features a cover to prevent contents falling out, the brush clips to dustpan handle. Size 103 x 30 x 25 cm

#### RS-101051



### Dustpan & Brush Set - Soft Bristles (Single)

A professional quality dustpan and brush set with soft bristles, made from tough, hardwearing plastic. The dustpan has a rubber lip at the front for better dirt collection. Size: 23 x 31 x 10 cm

#### RS-102940

Available colours:



### Washable Hand Brush (Single)

A plastic brush with stiff bristles, shaped at one end to fit right into corners. Made from 20% recycled plastic, colour coded and machine washable to ensure better hygiene.. Size: 15 cm

#### RS-104951

Available colours:



### Washable Deck Scrub (Single)

A sturdy scrub head with stiff plastic bristles, ideal for tough scrubbing tasks. Washable to ensure better hygiene. Suitable for use with the Hygiene handle. Size: 23 cm

#### RS-104945

Available colours:



### Washable Broom Head Soft 30cm (Single)

Polypropylene broom head with soft bristles, suitable for both indoor and outdoor sweeping. Washable to ensure better hygiene. Size: 30 cm

#### RS-104947

Available colours:



### Washable Broom Head Stiff 30cm (Single)

Polypropylene broom head with stiff bristles, suitable for both indoor and outdoor sweeping. Washable to ensure better hygiene. Size: 30 cm

#### RS-104948

Available colours:





### 40 / 60 / 80 CM Sweeper Mop Kits

Dust control sweepers with aluminium handles, frame and acrylic sweeper heads. Lightweight for ease of use. The kit comprises a handle, frame and sweeper mop head. Available in 3 sizes. Size 40, 60, 80 x 120cm

- RS-103946** - 40cm Kit
- RS-103947** - 60cm Kit
- RS-103948** - 80cm Kit

Available colours:



### 40 / 60 / 80 CM HD Golden Sweeper Mop Kits

Designed to give a professional standard of dust control, with heavy-duty sweeper heads which attract and hold even fine dust. Sweeper heads are machine washable for easy cleaning. Available in 3 sizes. Size 40, 60, 80 x 160 cm

- RS-102329** - 40cm Kit
- RS-102331** - 60cm Kit
- RS-102333** - 80cm Kit



### 1m V Sweeper Synthetic Mop

A V shaped sweeper mop designed to pick up dust and dirt. The 100cm long heads can be extended from closed position to 1.6m wide to cover large floor areas. Blue only. Size 147 x 109 cm

**RS-102303**



### Baggy Sweeping Set

A versatile lightweight sweeping set with jointed rubber blade, open ended pan and integral bag holder to remove and hygienically collect dirt at the same time. Comes with ten PVC bags. Size: 98 x 29 x 16cm

**RS-103274**



### 10L Pre-Soak Container & Lid (Single)

A hermetically sealed container used for pre-soaking mop heads. The tight seal prevents mops from drying out. An accessory for all pre-soak mopping systems. Size: 24 x 35 x 19cm

**RS-101294**



### Wet Floor Sign (Single)

A double sided A frame sign to warn against potential hazards from wet floor surfaces during and after cleaning or spillages. Made from vivid yellow plastic with black graphics. Folds flat for easy storage. Size: 62 x 30 cm

**RS-101423**



### Eco Jolly Trolley

A superb cart made from 73% recycled content for general purpose use. The trolley features a push handle with comfort grip, along with large wheels for uneven surfaces. It has three in-built shelves, plenty of room for essential cleaning products, and a built-in hanger, lid and 60 litre vinyl bag (included). Size: 51 x 123 x 97cm (Accessories available: lockable box, PVC bags)

**RS-101272**



### 60L Trolley Bag Plastified (Single)

A water repellent trolley bag designed for use with laundry nets and carrying dirty mops and cloths.. Size: 60L

Available colours:



**RS-101292**



### Drawstring Laundry Net (Single)

Handy Colour coded laundry nets for mops and cloths. Includes labels for returns.. Size: 62 x 86cm

Available colours:



**RS-101310**



**Green PVC Apron Size 42x36" & Apron Tape 75m**

Easy to wipe clean finish apron. Reinforced corner piece where tape meets the apron for longevity. 100% waterproof PVC construction. Size: 106 x 91cm

PVC Apron Tape - 75m (available in white or blue)

**SO-09702 - PVC Apron**  
**SO-09704 - Apron Tape**



**Safety Goggles Unvented (Single)**

These goggles provide protection against medium impact and can comfortably fit over prescription glasses. Equipped with reflective polycarbonate lenses and a soft vinyl frame, they ensure both protection and comfort for extended wear. Comply with EN 166 standards

**UR-HR515**



**Safety Goggles Indirect Vent (Single)**

Sport style goggle with distortion-free 100% peripheral vision. Indirect vent, polycarbonate non-mist lens and neoprene strap

**SO-5445**



**Bouffant Cap - Blue (Pack 100)**

Disposable bouffant cap completely covers hair to prevent product contamination. Suitable for use in all food preparation areas. Soft polypropylene is comfortable and lightweight, making it the ideal choice for extended wear. One size fits all.

**SO-5615B**



**Beard Snoods - Blue (Pack 100)**

Essential for any kitchen, these beard snoods offer a lightweight, comfortable fit that can be worn for long shifts without discomfort. The mesh design encourages airflow and allows moisture to escape, reducing the risk of food contamination and helping to maintain a clean and hygienic kitchen.

**SO-5630B**



**16" / 41cm Disposable Overshoe Covers - Blue (Pack 2000)**

Quality CPE deeply embossed overshoes with elasticated edges, intended to be used for low risk applications and widely used in the food industry. Elasticated edges and heat seal Deeply embossed for non slip use. 40 microns thickness.

**UR-DB106**



**Disposable Face Masks - Black (Pack 50)**

A stylish black colourway makes the coverings great for front-of-house use. Each mask has a 3 layered construction, is ultrasonically bonded and is produced to meet EN1468:2019+AC:2019 standards. The premium air permeable materials allows for comfortable breathing, are non irritating and non toxic.

**UR-DF589**



**Moldex Sparkplug Ear Plugs in Dispenser (250 Pairs)**

250 pairs of single use disposable earplugs, independently tested NRR (35db) making them suitable for most noisy environments. They are made from soft polyurethane foam that gradually expand to fill the profile of the user's ear. Conforms to EN352-2. SNR 35dB. Sold in plastic dispenser.

**SO-5446**



**Wall Bracket for Moldex Sparkplugs Dispenser**

The Wall Mounting Bracket is constructed from robust plastic and is suitable for use with all Moldex Ear Plug hearing protection dispensers. Designed complete with a tray to prevent ear plugs falling to the floor, this wall mount comes with everything needed for installation.

**SO-54462**



### Powder Free Blue Vinyl Disposable Gloves (Box 100)

These Blue Vinyl Powder Free Disposable minimal risk gloves are latex free. The blue colour of the gloves provides traceability for the food industry, while the powder free specification reduces the risk of product contamination. The smooth finish enhances dexterity, making these gloves suitable for variety of tasks.

**PC-GD13-S - Small**

**PC-GD13-M - Medium**

**PC-GD13-L - Large**

**PC-GD13-XL - X-Large**



### Powder Free Clear Vinyl Disposable Gloves (Box 100)

These Clear Vinyl Powder Free Disposable minimal risk gloves, are latex free and approved for use with food (except fatty food). The powder free specification reduces the risk of product contamination and smooth finish improves dexterity.

**PC-SA-GD09-S - Small**

**PC-SA-GD09-M - Medium**

**PC-SA-GD09-L - Large**

**PC-SA-GD09-XL - X-Large**



### Powder Free Blue Nitrile Disposable Gloves (Box 100)

These Blue Nitrile Powder Free Disposable Gloves are an excellent all rounder, a light-weight glove offering resilient protection. Their nitrile composition gives them durability, and they are suitable for individuals with latex allergies. These gloves are suited for applications in diverse settings, including medical environments, laboratories, and food production.

**PC-NU102S - Small**

**PC-NU102M - Medium**

**PC-NU102L - Large**

**PC-NU102XL - X-Large**



### Powder Free Black Nitrile Disposable Gloves (Box 100)

Black Nitrile light-weight disposable gloves provide durability and reliable protection. They deliver outstanding dexterity and tactile sensitivity, making them highly versatile. Approved for use in diverse industries, including food handling, tattoo artistry, automotive work, and engineering, these gloves provide dependable performance across various demanding applications.

**PC-NU105S - Small**

**PC-NU105M - Medium**

**PC-NU105L - Large**

**PC-NU105XL - X-Large**



### Finite Black Nitrile Disposable Gloves (Box 100)

Finite Black Nitrile Disposable Gloves offer excellent protection against water, oils, and chemicals. Featuring a diamond pattern across the entire hand surface, these medium-weight gloves provide enhanced grip, making them highly effective for handling tools in a variety of applications, including laboratory work, engineering, and automotive tasks.

**PC-GL100-S - Small**

**PC-GL100-M - Medium**

**PC-GL100-L - Large**

**PC-GL100-XL - X-Large**



### Heavy Duty Flock Lined Rubber Gloves (Pair) - 31cm

An innovative latex chemical gauntlet. It has been chlorinated to harden the surface, leaving it smooth to the touch and increasing its performance. The inner surface of the glove is orange and the outer black, this helps highlight to users any potential nicks or abrasions on the glove. Jet is designed to be tighter fitting than other chemical gauntlets to increase comfort and dexterity.

**PC-SA-52 - 7.5 - Small**

**PC-SA-52 - 8.5 - Medium**

**PC-SA-52 - 9.5 - Large**

**PC-SA-52 - 10.5 - X-Large**

### Yellow Latex Rubber Household Gloves (Pair)



A rubber household washing-up glove, is soft and comfortable, for all day use. Flock lining eases donning and removal and absorbs perspiration keeping the hands cool and comfortable. Textured palm and fingers to improve grip. Rolled cuff for extra strength and prevention of liquid roll back.

**PC-GR03-7-S - Small**

**PC-GR03-8-M - Medium**

**PC-GR03-9-L - Large**

**PC-GR03-10-XL - X-Large**

### Universal Freezer Gloves (Pair)



**UR-CA975**

These one-size-fits-all freezer gloves have been specially designed to keep hands protected when exposed to extreme cold conditions. Capable of protecting against low temperatures of -20°C, this makes these gloves ideal for taking gastronomic out of the freezer. Colour: Orange & Blue



### 15L White Pedal Bin Liners (Pack 100)

A 15 litre medium-duty pedal bin liner is designed for efficient and hygienic waste disposal in offices and general settings. Tailored for 15-litre bins, its light-duty design is perfect for routine disposal of everyday waste. Thickness 8µm. Size: 425 x 425mm

**CM-WH015B0 - Max Weight 6kg**



### 30L White Square Bin Liners (Roll of 100)

These 30 litre bags are ideal to line square bins, which are typically used in home and office environments to capture waste and recycling. Made from 33% recycled content. Supplied in rolls of 100 bags for easy storage and distribution. Thickness 8µm Size: 310 x 600 x 600mm

**CM-WH030B0 - Max Weight 9kg**



### 90L Black Refuse Sacks (Pack 200)

90L Black standard Refuse Sacks. 10kg maximum weight. Made from 97% recycled UK material for a sustainable solution. Regularly tested to ensure consistent quality and performance. Thickness 18µm. Size: 737 x 965mm.

**CM-BK090E1 - Max Weight 10kg**



### 90L Black Refuse Sacks (Packs of 200)

90L Black standard Refuse Sacks. 15kg maximum weight. Made from 97% recycled UK material for a sustainable solution. Regularly tested to ensure consistent quality and performance. Thickness 21µm. Size: 737 x 965mm. Max weight 15kg.

**CM-BK090C1 - Case of 200 bags**  
**CM-BK090C0 - 4 Rolls x 50 bags**



### 140L Black Compactor Sacks (Pack 100)

The 140-litre black compactor sack is the go-to choice for those who prioritise reliable and sustainable waste management. Made from 95% recycled material for a sustainable solution. Fit for purpose, performance backed up by regular testing. Thickness 38 µm. Size 864 x 1168mm

**CM-BK140B1 - Max weight 18kg**



### 90L Clear Refuse Sacks (Pack 200)

A 90-litre Natural Refuse Sack. Made from 100% recycled material for an eco-friendly option. Packed in folds for easy distribution. Designed for excellent performance to prevent leaks and tears. Thickness 22µm. Size: 737 x 965mm

**CM-NA090C1 - Max weight 15kg**



### 140L Clear Refuse Sacks (Pack 100)

A 140-litre Natural Refuse Sack. 140L capacity and 18kg weight capacity ensure efficient handling of substantial loads. Made from 97% recycled material for a sustainable choice. Thickness 38 µm. Size 864 x 1168mm

**CM-NA140B1 - Max weight 18kg**



### 10 Litre Green Compostable Bin Liners (Pack 26)

The green compostable food waste liner is an eco-conscious choice for responsible waste disposal. With full biodegradability and EN certification, it assures users of its commitment to sustainability. Perfect size for food caddy. Size: 450 x 240mm

**CM-CW010C0 - Max weight 4.5kg**



### 80 Litre Green Compostable Bin Liners (Pack 10)

The green compostable food waste liner is an eco-conscious choice for responsible waste disposal. With full biodegradability and EN certification, it assures users of its commitment to sustainability. Perfect for kitchen bins. Thickness 18µm. Size: 725 x 850mm

**CM-CW080C0 - Max weight 8.5kg**



### Litter Picker Contract 85cm (Single)

Good value basic litter picker with ergonomically designed squeeze-action hand grip. Shaped claws for the non-slip grabbing of litter.  
Size: 85 x 9 x 3 cm

**RS-101491**



### 19L Grey Sanitary Bin

A compact sanitary bin to fit any toilet cubicle, made from hardwearing, easily cleaned ABS plastic. Foot operated opening with secure cover to hide waste and contain odours.  
Size: 18 x 35 x 56cm

**RS-101690**



### 25L Swing Bin & Lid

Everyday swing-top bin made from tough, easy clean polypropylene. Can be used with or without refuse sack in a wide range of environments. Lift off lid for easy emptying.  
Size: 53 x 34 x 27cm

**RS-101738**



### 90L Polaris Pedal Bin

A large, durable and hygienic polypropylene pedal bin featuring a colour coded lid for waste segregation. Has an air freshener holder inside and 2 hooks to secure bin bags. Two rear wheels and large handle for easy manoeuvrability.  
Size: 52 (W) x 33 (D) x 93 (H) cm

Available colours:



**RS-101710**



### 80L Procycle Recycling Bin

A modular recycling bin with lid and includes connectors to build your own multi-recycling stations. Made from hardwearing and robust polypropylene, the bins are available with colour coded back panels for glass bottles & jars, food tins & drinks cans, mixed card, food waste, plastic packaging, general waste, and mixed recycling (sold separately).  
Size: 34 x 55 x 86 cm

**RS-105170**



### Procycle Printed Back Panel (Single)

A range of printed colour coded back panel designs that fits the 80L Procycle Recycling Bin to help simplify your recycling needs. Includes designs for glass bottles & jars, food tins & drinks cans, mixed paper and card, food waste, plastic packaging, general waste, and mixed recycling.  
Size: 24 x 5 x 27cm

- BRN Food
- DBLU Glass
- DBLU Paper
- RD Plastic
- GRN Mixed
- WHT General
- GRY Metal

**RS-105171**



### 65L Pedal Bin Enclosed Fire Retardant

A sturdy 65 litre fully enclosed fire retardant and foot operated pedal bin. It is ideal for high volumes of waste and is an excellent choice for busy wards and public areas.. Manufactured in the UK from corrosion resistant galvanised steel with metal fixings. Available in seven lid colours (black, orange, white, blue, green, yellow and red) to help in the segregation of waste.  
Size: 37 (W) X 42 (D) x 80 (H) cm

Available colours:



**RS-104218**



### 90L Recycling Wall Hugger Bin & Lid

A slimline recycling bin designed to save space as it has a 90-litre capacity but only protrudes 30cm from wall. The Wall Hugger is available with a range of coloured open lids to help meet the new waste recycling legislation along with recycling labels to aid the segregation of waste (sold separately)  
Size: 29 x 55 x 80cm

- Black
- Blue
- Dark Green
- Light Green
- Grey
- Red
- Teal

**RS-105210**



### Recycling Sticker - English (Single)

Individual self-adhesive recycling labels to aid the segregation of waste. Choice of glass, tin, paper, food waste, plastic, general waste and mixed recycling stickers.. Size: 10 x 9.5 cm

- GREEN Food
- BLUE Paper
- GREEN Mixed
- GREY Metal
- TEAL Glass
- RED Plastic
- WHITE General

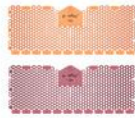
**RS-105168**



**Gel Urinal Screens (Pack 10)**

Anti-splash scented urinal screen that eliminates unpleasant odours for up to 30-days. It is made from an antibacterial material, and it is flexible enough to fit most urinals. Made in the UK from at least 75% recycled materials, includes a dating system. Available in citrus (orange) fragrance.

**RS-104749**



**P-Wave® Trough Urinal Screen (Pack 2)**

Step into a world of superior hygiene and odour control with the P-Wave® Trough Urinal Screen - where innovation meets functionality. It's not just a product; it's a solution to transform your trough urinal experience. \*EcoPure® treated products demonstrate accelerated biodegradation compared to untreated plastics in landfill conditions. Fragrances of Mango & Spiced Apple.

**RS-105256**



**P-Wave® Bowl Clip Air Freshener (Pack 12)**

The P-Wave Bowl Clip is engineered to effortlessly clip over the exterior of your toilet rim (underneath the seat). Bursting with long-lasting fragrances of Mango, Spiced Apple, Ocean Mist, Honeysuckle and Cotton Blossom, lasts 30 days and covers up to 12m<sup>2</sup>. Relies on air movement and so for best results install in an area with good air flow.

**RS-105230**



**Urinal Caps (Pack 12)**

The urinal cap contains naturally-occurring bacteria to break down uric scale, limescale, fat and solids. It also helps to fight bad odours in your washroom. These caps also reduce urinal flushes and water consumption to save money and minimise your environmental impact.

**RS-104554**



**Kleenmist Fragrance Dispenser AD100 (Single)**

A high impact fragrance dispenser in white for use with the 270ml Kleenmist aerosols with LED indicators. Choose from 8/15/25 minute adjustable cycles and Day/12/24 hour sensor. It operates on 2 x AA batteries (not supplied), and dispenses approximately 50,000 metered aerosol sprays.

**RS-100030**



**Kleenmist Fragrance Aerosol 270ml (Single)**

Refill aerosol fragrance cans. To be used with the AD100 dispensers. Available in a range of four extra-strength fragrances of Cranberry, Citrus Grove, Garden Apple and Fresh Linen.

- RS-100068CRA - Cranberry**
- RS-100068CIT - Citrus Grove**
- RS-100068LIN - Fresh Linen**
- RS-100068APP - Apple**



**Loowy Silicone Toilet Set**

A Toilet brush set with a silicone, antibacterial and water repellent waveform blade for cleanliness right up to the edge. It's quick-drying, easy rinse and durable. By staying clean and clog-free. 2 Year product Guarantee. Size: 14 x 17 x 39cm

**RS-104508**



**Toilet Brush & Holder Open Set**

Everyday value floor standing bowl and brush with quality bristles. Made from bleach resistant polypropylene, easy to clean for better hygiene. Size: 38 x 13cm

**RS-102962**



**Chrome Toilet Brush and Holder Set**

Chrome Toilet Brush and Holder. This smart, slim, chrome toilet brush is ideal for hotel bathrooms of all sizes. It includes a washable inner bin that enables easy, hygienic cleaning. Size: 40(h) x 11.2(dia)cm.

**HC-168161**

## Modular Dispenser Systems



Code	Description	Window	Key
CL-137800/B	900ml Refill Soap Dispenser Blue Window	Blue	
CL-137800/R	900ml Refill Gel/Hand Sanitising Gel Dispenser Red Window	Red	
CL-137800/CREAM	800ml Pouch Cream Dispenser Green Window	Green	
CL-137867	900ml Refill Foam Dispenser Red Window	Red	
CL-137867/B	900ml Refill Foam Dispenser Blue Window	Blue	
CL-137819	800ml Pouch Foam Dispenser Blue Window	Blue	
CL-137819/R	800ml Pouch Foam Dispenser Red Window	Red	
CL-137808	800ml Pouch Spray Dispenser Blue Window	Blue	
CL-137808/R	800ml Pouch Spray Dispenser Red Window	Red	
CL-137821	800ml Pouch Soap/Gel Dispenser Blue Window	Blue	
CL-137821/R	800ml Pouch Soap/Gel Dispenser Red Window	Red	
CL-137781	400ml Refill Mini Soap Dispenser	Blue	
CL-077077	500ml Single Senses Bottle Holster	N/A	
CL-137774	900ml Refill Plain Soap/Gel Dispenser Blue	Blue	
CL-1377R2L	1.5l Refill Soap Dispenser (For Beaded or Solvent Soaps)	Yellow	
CL-DIS-HBG-PGY800	800ml Grey Pouch Soap/Gel Dispenser	Grey	
CL-DIS-PHC-PY1.5	1.5kg Yellow Pouch Dispenser	Yellow	
CL-MSD-DRIP-PK6	Modular Dispenser White Drip Tray	N/A	

# CLEANING PRODUCTS

---



## *Cleaning Products*

---

- 24** Evo - X2 System
- 26** Easidose System
- 28** General Cleaning
- 32** Machine Cleaning
- 33** Warewashing
- 35** Laundry
- 36** Washroom
- 38** Toiletries
- 39** Eco Cleaning

# CLEENOL

NEW PRODUCT RANGE

## EVO X2 SUPER CONCENTRATE SYSTEM

**EVOLUTION**  
SUPER CONCENTRATES

### Cost effective

Each concentrate cartridge produces the equivalent of x12 (750ml) ready to use trigger sprays.

### Safety in use

Built-in dosing/mixing - The trigger head mixes the correct amount of water & product with each spray. The cartridges have specially designed seals to prevent accidental spillages and human contact.

### Switching product on the go

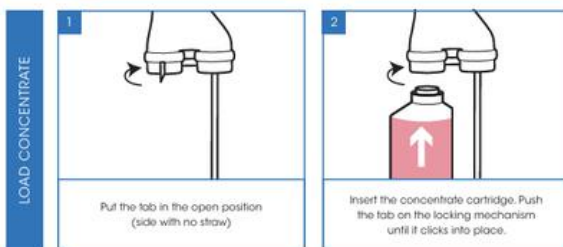
Super easy to switch product on the go, from Sanitiser to Degreaser in the kitchen, or Washroom Cleaner to S/S & Mirror cleaner in the toilets, with a simple unlock, insert the new cartridge and re-lock mechanism.

### Small storage Footprint

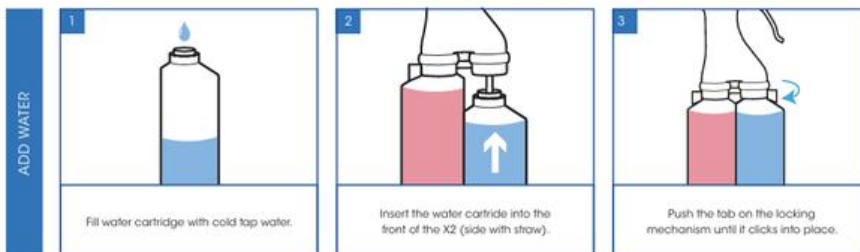
Less plastic waste and less storage space required to store the products.



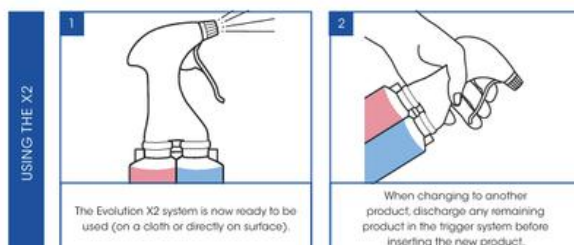
### Step 1.



### Step 2.



### Step 3.



Each cartridge makes the equivalent to 12 ready to use trigger sprays.



**Evolution X2 Starter Kit (Single)**

X2 Sprayhead with water bottle for use with all Evolution X2 cartridge products. Simply fill the water cartridge and lock it into place, along with your chosen super concentrate. The trigger spray will then dose the correct amount of product and water each time you spray. With interchangeable product cartridges can clean multiple areas and rooms with ease.

**CL-EV-X2START**



**X2 Ecolabel EV2 Multi Surface Degreaser (325ml)**

A highly effective multi-surface cleaner with excellent grease and oil removing properties. Can also be used for commercial deep-fat fryers, walls, floors and canopy filters. Cleans hard surfaces such as paintwork, metals and plastic. Made from sustainable ingredients and certified under the EU Ecolabel. Suitable for use in food preparation areas.

**CL-ECO-EV2-X2**



**X2 EV3 Multi-Surface Cleaner Sanitiser (325ml)**

A highly effective food safe un-perfumed cleaner and sanitizer for most hard surfaces, including work surfaces, microwaves, floors, tiles and chopping boards. Always test on an inconspicuous area prior to use. Product is alkaline, so take care on surfaces sensitive to a higher pH. Complies with EN1276 and EN13697.

**CL-EV3-X2**



**X2 Ecolabel EV6 Perfumed Washroom Cleaner (325ml)**

Cleans, descales, deodorises and disinfects in one operation. Effective in removing natural oils, soap deposits and general soiling from sanitary ware, tiles and flooring. Conforms to EN1276 within 5 minutes when diluted through the X2 system. Certified under the EU Ecolabel and made from sustainable ingredients. (Not suitable for use on acid sensitive surface such as marble.)

**CL-ECO-EV6-X2**



**X2 Ecolabel EV8 Window & S/S Cleaner (325ml)**

A surfactant based cleaner that effectively cuts through the atmospheric grime and nicotine soil. Also, ideal for cleaning and polishing stainless steel where a streak-free finish is required. Our X2 concentrated solution means minimal waste with maximum results. Made using a phosphate-free formulation, that has been certified under the EU Ecolabel.

**CL-ECO-EV8-X2**



**X2 EV10 Perfumed Multi-Surface Cleaner (325ml)**

A highly effective multipurpose cleaner. The product has a fresh citrus fragrance, making it ideal for use in front of house environments. For spray cleaning of sanitary fittings including toilets, urinals, sinks and showers. Safe for use on stainless steel and all ceramic surfaces.

**CL-EV10-X2**



**X2 EV11 Anti-bac Multi-Surface Cleaner (325ml)**

A mildly acidic surface cleaner and disinfectant. Suitable for use in most areas outside of the kitchen. Not for use in food preparation areas. Conforms to EN1276 when diluted through the X2 system.

**CL-EV11-X2**



**X2 EV12 Virucidal Cleaner (325ml)**

A highly concentrated, disinfectant cleaner, for use on most non-porous hard surfaces. Suitable for use in food preparation areas and for one-stage cleaning and disinfection routines.

**CL-EV12-X2**



**X2 EV14 Perfumed Virucidal Cleaner (325ml)**

A highly concentrated, perfumed disinfectant cleaner. Suitable for use on most non-porous hard surfaces, for a one stage cleaning and disinfection routine that leaves a refreshing scent.

**CL-EV14-X2**

# CLEENOL

BEST SELLING RANGE

## A SUPER EASY DOSING CONCENTRATE SYSTEM








The new Easidose range consists of portable bottles of concentrated formulas with an integrated dispensing system, allowing you to measure out an accurate dose for dilution into the perfect product, every time.

Each bottle of Easidose has a specially designed measuring cup built directly into the bottle. Also embedded in the bottle is a feed tube which connects from the bottom of the bottle to the measuring cup above.

Uncap the bottle, then simply squeeze the bottle until the dose measure in the bottle neck is at the required level, then pour the dose out into a bucket or flask. Finally, add water until the required dilution is reached.

Excellent option for customers that love the effectiveness of the Evolution Super Concentrates range, but don't have space for wall mounted hardware, the solution is here.



1.  Firstly, loosen the cap to allow air into the bottle, you'll need to do this or the feed tube won't operate.
2.  Gently squeeze the sides of the bottle, the air flow and light pressure will push the concentrate through the feed tube.
3.  The product will exit the feed tube and start to fill the measuring cup, keep squeezing until you've reached the desired volume for dilution.
4.  Once you've reached the required dosage, cease squeezing. The concentrate will flow back down the tube.
5.  Make sure you have a prefilled heavy duty refill flask or bucket handy, this needs to be filled with clean fresh water.
6.  Simply empty the concentrate from the measuring cup into your prefilled heavy duty refill flask or bucket, then reattach the cap.
7.  You're now ready to get on with cleaning. We told you it was easy!

Using concentrates has never been **easier**



**ED2 Multi-Surface Cleaner Degreaser (1 Litre)**

A highly effective cleaner and degreaser for heavy soiling and grease. Can be used through a trigger bottle on exterior areas of equipment including canopy hoods, fat fryers, cookers, canopy filters, stainless steel wall cladding and glazed tiles. Fragrance-Free and Food-Safe for use in food preparation environments.

**CL-ED2-1L - 1 Litre**

**CL-EVF2 - Refill Bottle**



**ED3 Antibacterial Multi-Surface Cleaner (1 Litre)**

A antibacterial surface cleaner suited to the kitchen environment. It's fragrance-free formulation prevents the tainting of food. Ideal for the cleaning of food preparation areas and areas involved in the processing of meats, cream and other foods that may carry high risk of bacterial contamination.

**CL-ED3-1L - 1 Litre**

**CL-EVF3 - Refill Bottle**



**ED5 Perfumed Floor Cleaner (1 Litre)**

A pH neutral, highly perfumed hard floor cleaner containing an invigorating perfume to refresh any area in which it's used. Suitable for use on marble and stone floors with polished or natural finishes. For use in reception areas, corridors, bathrooms, etc.

**CL-ED5-1L - 1 Litre**

**CL-EVF5 - Refill Bottle**



**ED6 Perfumed Antibac Bath & Washroom Cleaner (1 Litre)**

A 4-in-1 product that cleans, disinfects, removes limescale and deodourises in one operation. It effectively removes natural oils, soap deposits and general soil from baths, sinks, showers, WCs, tiles, glass screens and hard floor coverings. It helps to prevent hard water deposits and leaves a refreshing mild citrus fragrance to deodourise the room.

**CL-ED6-1L - 1 Litre**

**CL-EVF6 - Refill Bottle**



**ED7 Air Freshener (1 Litre)**

Formulated to deodourise a variety of unpleasant odours, including natural body odours and stale tobacco. Leaves rooms with a refreshing sweet pine fragrance. The odour complements that of the Easidose Perfumed Floor Cleaner.

**CL-ED7-1L - 1 Litre**

**CL-EVF7 - Refill Bottle**



**ED8 Window & Stainless Steel Cleaner (1 Litre)**

Designed for use anywhere that a streak-free finish is required. This includes glass, perspex, aluminium and stainless steel. The product effectively cuts through grease and atmospheric grime.

**CL-ED8-1L - 1 Litre**

**CL-EVF8 - Refill Bottle**



**ED9 Toilet Cleaner (1 Litre)**

For the daily maintenance of urinals and toilets. Designed to be diluted 1 part concentrate plus 9 parts water to yield a viscous, clinging product. Removes soil and scale at the same time, leaving toilets clean and freshly scented with a pleasant citrus odour.

**CL-ED9-1L - 1 Litre**

**CL-EVF9 - Refill Bottle**



**ED11 Perfumed Antibac Multi-Surface Cleaner (1 Litre)**

A super concentrated blend of detergents, naturally derived acids and a quaternary ammonium compound based disinfectant. In one operation, it cleans, sanitises and deodourises, eliminating the need to have multiple products. Suitable for use on all acid-tolerant surfaces. Contains a refreshing orange scented perfume.

**CL-ED11-1L - 1 Litre**

**CL-EVF11 - Refill Bottle**



**ED12 Virucidal Cleaner (1 Litre)**

A highly concentrated disinfectant cleaner for use on most non-porous hard surfaces. Suitable for use in food preparation areas and for one-stage cleaning and disinfection routines. Conforms to EN1276, EN1650 (yeast), EN13727, EN13624, EN16615, EN14476 and EN1677 with a contact time of 5 minutes when diluted to 4%.

**CL-ED12-1L - 1 Litre**

**CL-EVF12 - Refill Bottle**

# CLEENOL

MOST POPULAR

## READY TO USE RANGE & REFILLS

# LIFT

The Lift range has stood as the backbone of the Cleenol family of products, a range that has stood the test of time in an ever-changing world. The heart of the Lift range has always been ease of use, each product within the range is ready-to-use in a variety of convenient bottle configurations, delivering impeccable cleaning results with every single use.

We've given the entire Lift range a fresh coat of paint as we celebrate the rich history of the range by bringing back the symbolic arrow which has been present in Cleenol's Lift branding since the 1980s.

- New Labels
- New Naming Convention
- Zero Formula Changes



### Lift Spray Cleaner with Bactericide (Single)

A ready to use liquid cleaner with a powerful bactericide which can be used for one stage cleaning and sanitizing. Capable of removing a wide variety of ingrained and greasy soiling. Contains no perfumes so is non-tainting and therefore food safe, making it ideal for cleaning of food preparation areas. Conforms to BS EN 1276 & BS EN 13697 killing 99.999% of bacteria.

**CL-057549 - 750ml**  
**CL-053212X5 - 5 Litre**



### Lift Perfumed Cleaner with Bactericide (Single)

Provides quick, easy fragranced cleaning and sanitizing for all housekeeping areas including desks, chairs, table tops, washrooms, lifts etc. Ready to use. An effective hard surface cleaner capable of removing a wide variety of ingrained and greasy soiling. Conforms to EN1276. Conforms to EN13697.

**CL-057697 - 750ml**  
**CL-053242X5 - 5 Litre**



### Lift Lemon Multipurpose Cleaner (Single)

A lemon scented cleaner designed to be used on a multitude of surfaces including floors, walls, ceramics, plastics, vinyl, metals, melamine, sealed wood, tiles and porcelain. Ideal for removing greasy soiling such as body fats or oil and dirt from paint work and tiles surfaces. (Not suitable for use in food preparation areas or on PVC.)

**CL-053053 - 750ml**  
**CL-053052x5 - 5 Litre**



**Hi-Power Sanitising Tablets (200 Tablets)**

A More convenient and safer to use than traditional liquid hypochlorite bleach. Dissolves with an effervescent action to give a solution of ready to use bleach. The active constituent is Triclosene Sodium. Each tablet yields 200 parts per million of available chlorine when placed in 5 litres of cold water.

**CL-0625CHL**



**Alcohol / Probe Wipes (200 Wipes)**

A tub of 200x200mm impregnated non-woven wet wipes for the sanitizing of food probes and surfaces. Alcohol based for fast drying. Broad spectrum of activity, effective against 99.99% of germs including bacteria and viruses within 5 minutes. For sanitizing food probes and work surfaces.

**CL-13646AW**



**Heavy Duty Powder Degreasant (10kg)**

A heavy duty blend of phosphates and alkaline builders to provide excellent grease removal. Suitable for use in food-processing areas. Can be used to effectively degrease floors, walls, deep fat fryers and canopy filters as well as general cleaning of hard surfaces.

**CL-031159**



**Washing Up Liquid - 15% Active (Single)**

A quality green 15% active detergent for general cleaning and dishwashing in all catering and kitchen environments.

**CL-02082X - 1 Litre**  
**CL-020822X5 - 5 Litre**



**High Active Washing up Liquid - 30% (Single)**

A high quality concentrated 30% active detergent to effectively break down food soils, leaving crockery and cutlery squeaky clean. Suitable for general cleaning and dishwashing in all kitchen situations.

**CL-021502x5 - 5 Litre**



**5 Litre Pelican Pump (30ml Dose)**

Helping to reduce wastage and increase productivity, this Pelican Pump is for 5 litre bottles and has been manufactured for repeated use. The plastic construction boasts a push down handle for easy dispense and will release a dosage of 30ml

**CL-136552 - 30ml Dose**



**Fragrance-Free Antibacterial Hand Soap (Single)**

A quality, high viscosity hand soap to remove light to medium soiling. Rinses off easily. Complies with BS EN 1276 killing 99.9% germs in 30 seconds. Complies with BS EN 13727 killing 99.9% germs in 30 seconds. Unscented, making it ideal for use in food processing areas.

**CL-077028 - 500ml**  
**CL-072722X5 - 5 Litre**



**Descaler & Tarnish Removed (Single)**

Enables rapid removal of scale deposits, metal tarnish and hard water scale from ferrous metals and brightens aluminium and chrome surfaces.

**CL-010392X5 - 5 Litre**



**Heavy Duty Drain & Sink Unblocker (Single)**

A heavy-duty drain and sink unblocker to remove both fatty deposits and proteins from drains and plugholes. If used regularly, it can help to keep drains clear and running freely.

**CL-DASU-6X1 - 1 Litre**



### Automatic Battery Operated Drain Dispenser

An automatic timed-dosing unit for Enzyme Drain Maintainer, the dispenser can be powered via mains or there is a battery-operated version where a mains connection isn't available.

**CL-ADS-DDK-BPTDS**



### Enzyme Drain Maintainer (Single)

An enzyme based product designed to breakdown oils, fats, grease and other organic matter that can cause blockages in drainage systems or grease traps. An excellent low-hazard alternative to aggressive caustic and bleach based products.

**CL-EDN-DM-2X5 - 5 Litre**



### Edenclean No-Rinse Floor Degreaser (Single)

Designed to effectively remove grease and fats from floors that have become slippery. Enzymes digest impregnated grease deposits, making floors both cleaner and safer. Cleaning time is saved without the need to rinse the product away. Simply allow to air dry.

**CL-EDN-NRFD-2X5- 5 Litre**



### Nova Lemon Floor Gel (Single)

The product is a mild cleaner, and will remove most greasy soils and scuff marks, and cleaned surfaces may be buffed to an attractive sheen without the need for rinsing prior to buffing. It is safe to use on virtually all hard surfaces and can be used either via damp mopping, spray cleaning or machine scrubbing.

**CL-0418L2X5 - 5 Litre**



### Crystal Grip Non-Slip Floor Cleaner (Single)

A specialist product which cleans polished floors and leaves a slip resistant polymer finish. The low molecular weight polymer helps make floors safer to walk on. Does not damage polish films so can be used on all non-porous polished and unpolished floors.

**CL-041872UN - 5 Litre**



### Nova Safety Floor Cleaner (Single)

Ensures swift soil removal and can be used for deep cleaning as well as routine maintenance of any safety floor. Its added bactericidal compounds make it an extremely effective disinfectant ideal for use in hospitals, nursing homes, schools, canteens and other areas where a clean, safe floor is essential.

**CL-BN6921 - 5 Litre**



### Novaslite Water Extraction Carpet Shampoo (Single)

A neutral low foam carpet shampoo for use in hot water extraction machines. With the use of a water extraction carpet machine a high pressurized stream of solution is sprayed onto the carpet. It cleans well, even softening many water-soluble and oil-soluble stains.

**CL-BN2047 - 5 Litres**



### Novaspotta Oxy Carpet Cleaner (Single)

Starts to work in 30 seconds with amazing stain removal results. It can completely remove even the toughest stains from your carpet or upholstery. Works on oils and fats, wine and juice stains, vegetable stains, blood and other bodily fluids.

**CL-BN2059-6 - 750ml**



### Purple Beer Line Cleaner (Single)

A very effective and safe cleanser which when used as directed, maintains beer lines, pipes and valves in top condition. Can be used to clean all types of liquid pump line systems in the food industry. In the presence of dirt and contaminants the purple liquid turns green.

**CL-0209PP - 5 Litre**



### Lift Graffiti Remover (Single)

A powerful blend of solvents and detergent designed to effectively remove graffiti from a wide range of surfaces including stone, brickwork, tiles and metalwork. This product is effective against permanent marker pen, crayon, lipstick and aerosol paints.

**CL-057666 - 750ml**



### Lift Stainless Steel Polish & Protector (Single)

Removes light soiling and stains. Deposits a film of food safe lubricant, leaving a soft glowing finish. May also be used as a protective film to help prevent food and grease splatter from sticking to cooking ranges and surfaces.

**CL-053688 - 750ml**



### Lift Mould & Mildew Remover (Single)

Effectively remove unsightly mould and mildew stains in minutes, without the need to scrub. Simply spray onto tiles, grout, or sanitary ware, leave for up to 5 minutes and wipe clean.

**CL-MMR-6X750 - 750ml**



### Lift Wax Free Polish (Single)

Designed to give an effective clean and polish in one operation. Removes dust and fingermarks with ease. Use on paintwork, enamel, laminates, plastics and sealed wooden surfaces. (Not for use on waxed or lacquered furniture.)

**CL-057555 - 750ml**

**CL-053312X5 - 5 Litre**



### Brasso Liquid Polish (Single)

Brasso liquid polish is a traditional metal polish designed to remove tarnish from brass, copper, chrome and stainless steel. Renews metal surface and leaves a long-lasting shine.

**SO-10520 - 175ml**



### Acetum White Wine Vinegar (Single)

White wine vinegar is not just an ingredient, it is also a fantastic and highly effective cleaning product. Use on glass and stainless steel surfaces, leaving them sparkling clean and streak-free. No-harmful chemicals in this bottle, so a great eco-friendly option for your business.

**UR-KA061 - 5 Litre**



### Eden Clean Odour Neutraliser (Single)

A ready to use enzyme based deodoriser. Powerful enzymes break down organic compounds responsible for bad odours. Suitable for use on both soft and hard surfaces including carpets, upholstery, flooring, tiles, urinals and etc. Contains a light vanilla fragrance to help mask the malodour while the enzymes break down the organic compounds.

**CL-EDN-ON-2X5 - 5 Litres**



### Quash Glass Pre-Wash Lipstick Remover Intro Pack

The Quash System is a pre-wash removal for grease marks and lipstick from the lip area of all types of glassware. Its safe, non-hazardous, simple and hygienic to use. Perfect for bars, cafes and restaurants, this Quash lipstick remover pack includes two bottles of Quash Concentrate, four sponges, an applicator and a measuring cup.

**UR-FU934**



### Quash Lip Stick Remover Refill Pack

This is a Quash Lipstick remover refill pack includes: 2 x 1ltr of Quash concentrate, 4 x refill sponges and 1 measuring cup. The lipstick remover prevents lipstick marks on glassware, as well as other grease marks and stains that can effect the overall quality of items.

**UR-GD009**



### Rational Blue Rinse Aid Tablets (Pack 50)

Keeping your oven clean and hygienic is vital to providing the highest quality food to your guests. Suitable for both Lincat and Rational combination ovens, these powerful blue rinse aid tablets help your oven's self cleaning cycle, keeping your oven running efficiently and effectively during your busy services

**UR-AE959**



### Rational Red Detergent Tablets (Pack 100)

These powerful red detergent tablets are an essential part of your combi oven's cleaning cycle. Not only will they help to keep your oven perfectly clean and hygienic, they'll also keep it running efficiently. The powerful formula effortlessly removes oil, dirt and grime from your combi oven.

**UR-DL248**



### Rational Care Control Rinse Tablets (Pack 150)

These powerful blue, care control tablets are an essential part of your combi oven's cleaning cycle. Not only will they help to keep your oven perfectly clean and hygienic, they'll also keep it running efficiently to consistently produce the highest quality cooking performance.

**UR-DL249**



### Rational Cleaner Tabs Active Green (Pack 150)

Greener and cleaner, the Rational Active Green oven cleaning tabs are a fantastic alternative to older cleaning tabs. These effective tabs ensure ultra-fast cycles and great results. Even interim iCombi Pro cleans can be completed within 12 minutes.

**UR-FP065**



### Warm Oven Spray Cleaner (Single)

A product that forms part of our successful Catering Hygiene Programme. Formulated to remove heavily encrusted carbon deposits from the internal areas of industrial and commercial ovens as well as combi's. Converts hardened deposits into a liquid that can be rinsed off easily.

**CL-0831392x5 - 5 Litre**



### 5L Trigger Lance with Spray Head (Single)

Designed for controlled and safe use of 5-litre Warm Oven Spray Cleaner bottles. Allows you to get into hard to reach areas.

**CL-136702**



### Heavy Duty Foam Oven Cleaner (Single)

A heavy duty foaming oven cleaner created to remove baked on carbon deposits from the internal areas and tray racks of commercial ovens. Each bottle is fitted with its own foaming trigger spray which allows the product to be applied evenly across the areas to be cleaned.

**CL-083119 - 750ml**



### Urnex 2 Espresso Coffee Machine Cleaner (Single)

This espresso machine cleaner quickly eliminates residue in heads, valves and lines, combining maximum solubility and cleaning power with a convenient, easy-rinse formulation. Not only does this help to clear any residue left by water or coffee.

**UR-GG951 - 900g**



### Kettle Descaler (Single)

A powerful kettle descaler designed to remove the white deposits caused by lime from all types of kettle leaving them sparkling bright and help restore efficiency. Size: 1 Litre bottle.

**CL-010321 - 1 Litre**



Dedicated to providing outstanding warewashing results



### Dishwasher Detergent (Single)

A caustic-based non-foaming dishwasher detergent designed for use in areas of soft to moderately hard water. It's powerful blend of ingredients is particularly effective at removing greasy stains from ceramics, porcelain, china and crockery. (Not for use on aluminium.)

**CL-OSM-DD-2X5 - 5 Litre**

**CL-OSM-DD-10 - 10 Litre**

**CL-OSM-DD-20 - 20 Litre**



### Universal Glass & Dishwasher Detergent (Single)

A non-foaming detergent, suitable for use in both dishwasher and glasswasher machines. Suitable for use in soft to moderately hard water areas. The product is designed for use only with a Automatic Dosing System (ADS).

**CL-OSM-UGDD-2X5 - 5 Litre**



### Tannin Remover Dishwasher Detergent (Single)

A heavy-duty non-foaming dishwasher detergent designed to remove tough tannin stains from crockery, left behind by tea, coffee and wine. Performs best in soft to moderately hard water conditions. (Not for use on silverware, aluminium and polycarbonate.)

**CL-OSM-TRDD-2X5 - 5 Litre**

**CL-OSM-TRDD-20 - 20 Litre**



### Dishwasher Rinse Aid (Single)

To be used in conjunction with all Osmos dishwasher detergents through built in or external auto dosing equipment. Added to the final stage of the cycle, it ensures the rapid drying of crockery and glassware to a streak-free, sparkling finish and prevents spotting.

**CL-OSM-DRA-2X5 - 5 Litre**

**CL-OSM-DRA-10 - 10 Litre**

**CL-OSM-DRA-20 - 20 Litre**



### Universal Glass & Dishwasher Rinse Aid (Single)

To be used in conjunction with all Osmos dish and glasswash detergents through built in or external auto dosing equipment. Added to the final stage of the cycle, it ensures the rapid drying of crockery and glassware to a streak-free, sparkling finish and prevents spotting.

**CL-OSM-UGDRA-2X5 - 5 Litre**



### Cabinet Glasswash (Single)

For use in enclosed glass washing machines. Suitable for medium to hard water areas. Use in conjunction with Cleenol Universal Glass & Dishwasher Rinseaid to enhance the visual quality of the cleaned glasses. Safe to use on all glasses. Effectively removes soiling, including lipstick, without affecting beer head retention.

**CL-OSM-CG-2X5 - 5 Litre**

### Glass Renovator Liquid (Single)



A highly alkaline detergent specially formulated to renovate glassware, removing protein and fatty films which cause clouding. Effective in both hard and soft water conditions, and at low temperatures. (This product is not suitable for use on Polycarbonate.)

**CL-OSM-GRL-2X5 - 5 Litre**

### Tannin Remover Powder (Single)



This is a multi-component powder designed for the removal of tea and coffee stains. For use on china, plastic, melamine, stainless steel, chrome and most metals (except aluminium).

**CL-OSM-TRP3.5 - 3.5kg tub**



### Salt Tablets for water softening

A high purity food grade pure dried vacuum salt for use in domestic and commercial water softener units. Tablet salt is the ideal regenerant for water softeners. Available in 10kg & 25kg bags.

**SE - TAB10 - 10kg Bag**  
**SE-TAB25 - 20kg Bag**



### Salt Granules for water softening

Granular salt is the ideal regenerate for water softeners. The large crystalline flakes are easily dispersed and rapidly dissolve. Available in 10kg & 25kg bags.

**SE-GRAN10 - 10kg Bag**  
**SE-GRAN25 - 25kg Bag**



### Dishwasher Tablets (190 Tablets)

High-performance tablets designed to effectively clean dishes in professional and household dishwashers. Suitable for all types of washers, including under-counter, hood, and pass-through models. The tablets are pre-measured to ensure optimal results and efficient cleaning performance.

**GR-5091-71**



### Economy Dishwasher Detergent (5 Litre)

An effective economical detergent for use in cabinet dishwashing machines. Easily removes stubborn dirt and soiling in both hard and soft water areas. Suitable for washing crockery, cutlery and stainless steel utensils. For use in cabinet dishwashing machines

**GR-6675-00**



### Economy Machine & Glass Rinse Aid (5 Litre)

An effective additive to assist the final drying process in cabinet dishwashing and glasswashing machines to prevent spots and hazing. Auto Rinse Aid will ensure a perfect finish on crockery, cutlery, utensils and glassware. Minimum temperature of 60°C.

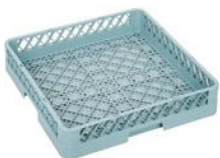
**GR-6676-03**



### Economy Glasswash Detergent (5 Litre)

A powerful detergent for use in cabinet glasswashing machines to remove the most stubborn stains and soil. Dispense the product via the machine's automatic dosing system.

**GR-6677-00**



### Cultery Dishwasher Rack (Single)

Commercial-grade cutlery rack. Efficiently wash utensils, ramekins and other small items with this open-bottom cutlery dishwasher rack. Open-bottom design promotes optimal cleaning and quick drying. Size: 500 x 500 x 100mm

**NV-FR**



### Plate Dishwasher Rack (Single)

Commercial-grade plate rack. Dry dishes quickly and efficiently with this dishwasher rack. Designed with moulded pegs to securely hold plates, platters and small trays in place. Size: 500 x 500 x 100mm

**NV-PR**



### Open Cup Dishwasher Rack (Single)

Commercial-grade open cup rack. Efficiently wash cups, dishes and containers in one go with this open-bottom dishwasher rack. Open-bottom design promotes optimal cleaning and quick drying. Size: 500 x 500 x 100mm

**NV-BR**



Exceptional performance from the very first wash cycle



**Crystalbrite Non-Bio Laundry Powder (10kg)**

A low lather, phosphate-free non-biological detergent washing powder suitable for all washing machines and water conditions. Suitable for hand washing. Special formula works effectively at low temperatures. Removes stubborn stains in one wash, even at 40°C.

**CL-031107**



**Crystalbrite Bio Laundry Powder (10kg)**

A low lather, phosphate-free biological detergent washing powder suitable for all washing machines and water conditions. Suitable for hand washing. Special formula works effectively at low temperatures. Removes stubborn stains in one wash, even at 40°C.

**CL-031118**



**Crystalbrite Oxyclean Laundry Stain Remover (10kg)**

Contains an oxygen bleach system, which, at high temperatures, exerts a positive soil-lifting action on organic stains without any adverse effects on the fabric. Specially formulated for pre-soaking prior to normal washing as an aid to washing efficiency. Can also be added to the main wash as a boost to stain removal.

**CL-020810-10**



**Premium Non-Bio Laundry Detergent (10L)**

A premium non-biological liquid detergent which is specially formulated to deliver outstanding soil removal. Its excellent stain-removing properties make it suitable for white or coloured fabrics. Clothes are left clean and fresh without the need for presoaking.

**CLK-CHE1202 - Emerald**



**Premium Bio Laundry Detergent (10L)**

A highly concentrated biological laundry detergent that delivers outstanding results, even in cold water. Keeps whites bright and prevents colour fading, perfect for sustainable laundry care. Safe to use with Ozone disinfection laundry systems.

**CLK-CHE1196 - Jade**



**Premium Fabric Conditioner (10L)**

A concentrated formulation that leaves clothes fresh and soft, with a deep luxurious feel. Contains persistent fragrance technology which slowly releases fragrance long after washing and tumble drying.

**CLK-CHE1003 - Lily Valley**

**CLK-CHE1197 - Bergamot & Amber**

**Soluble Strip Laundry Sacks - Red (Pack 200)**



An economy laundry bag for the safe containment and transport of contaminated laundry with a soluble seam strip that the bag dissolves away from when in contact with water. Size: 450 x 620 x 670mm

**CLK - SSLS**

**Dettol Antibacterial Laundry Sanitiser (3 Litre)**



Dettol antibacterial laundry sanitiser is an additive that kills 99.9% of bacteria, even below 30°C. You can be confident that your laundry is hygienically clean every time, whatever temperature you wash at (proven to work in rinse cycle temperatures as low as 15°C). Just add it to your normal washing routine after adding your detergent.

**UR-FT016**



### Lift Descaler Sanitizer (750ml)

A powerful foaming product designed for the safe and quick removal of limescale deposits from shower heads. Descales shower heads, plumbing fittings and sanitary ware. Ideal for use as a general surface descaler for ceramics, taps, bathtubs and showers, chrome and ceramic floor and wall tiles.

**CL-053888**



### Lift Window & Mirror Cleaner

Removes a wide range of soiling including atmospheric grime, nicotine stains, fingermarks, dust and dead insects. Produces a sparkling, streak-free finish on glass, ceramic tiles, highly polished stainless steel, chrome finishes, laminates and a variety of other hard surfaces.

**CL-057537 - 750ml**

**CL-053262X5 - 5 Litre**



### Lift Bath & Washroom Foaming Cleaner (750ml)

A 4-in-1 acidic product designed for use in all bathrooms and washrooms. Cleans, descales, deodourises and disinfects in one operation. Formulated for frequent cleaning. Effective in removing water marks from shower screens, removing lime scale from taps and removing grease and grime from around bath tubs, tiles, bathroom floors etc.

**CL-057596**



### Lift Mould & Mildew Remover (Single)

Effectively remove unsightly mould and mildew stains in minutes, without the need to scrub. Simply spray onto tiles, grout, or sanitary ware, leave for up to 5 minutes and wipe clean.

**CL-MMR-6X750 - 750ml**



### Cleenair Air Freshner 400ml Aerosol (Single)

Outstanding perfume strength within the product ensures that it is effective, long lasting and economical. A quick spray rapidly dispels odours leaving a pleasant long lasting fragrance that enhances any environment.

**CL-052069CRA - Cranberry**

**CL-052069VAN - Vanilla**

**CL-052085CIT - Citrus**



### Edenclean Enzyme Urinal Blocks (1.1kg)

A lemon scented urinal deodoriser and freshener with powerful enzyme action. Each block combines chemical cleaning agents with safe, biological activity to remove the solids that cause blockages and washroom odours. Average contents: 50 blocks.

**CL-EDN-EUB-1X1.1**



### Edenclean Enzyme Urinal Cleaner & Deodoriser (5L)

A ready to use enzyme product, specifically designed for use in bath and washroom areas. It's 2-in-1 action dispels odours caused by urine and prevents the build-up of uric acid scale. Designed for use in and around urinal bowls, channel urinals and surrounding walls and floors. Used daily, the product will keep urinals free from odour and scale.

**CL-EDN-UD-2X5 - 5 Litre**



### Toilet Descaler (750ml)

A toilet and urinal cleaner with powerful hard water scale removing properties for effective removal of scale deposits. Safe for use on stainless steel. Pleasantly fragranced to leave toilets with a refreshing residual odour.

**CL-082940**



### Apple Toilet Cleaner (750ml)

Formulated to effectively remove soiling and hard water scale around toilet urinals and around rims of WCs, leaving a fresh apple fragrance..

**CL-082966**



### General Purpose Thick Bleach

A general purpose thickened bleach solution for general cleaning and disinfection of hard surfaces, drains, gullies, toilets and sanitary ware. Can also be diluted for the disinfection of cleaned surfaces.

**CL - 062400 - 750ml**

**CL - 062392X5 - 5 Litre**



### Fragrance-Free Antibacterial Hand Soap (Single)

A quality, high viscosity hand soap to remove light to medium soiling. Rinses off easily. Complies with BS EN 1276 killing 99.9% germs in 30 seconds. Complies with BS EN 13727 killing 99.9% germs in 30 seconds. Unscented, making it ideal for use in food processing areas.

**CL-077028 - 500ml**

**CL-072722X5 - 5 Litre**



### Luxury Green Apple Hand Soap (Single)

A universal, high viscosity, pearlised hand soap. Leaves behind a crisp and fruity apple scent. A pH-balanced and effective formulation removes light to medium soiling. Rinses off easily. Contains added skin conditioning agents.

**CL-077037 - 500ml**

**CL-072742X5 - 5 Litre**



### Fragrance-Free Antibacterial Foam Hand Wash (5 Litre)

A mild effective formulation to remove light to medium soiling. Rinses off easily. Complies with BS EN 1276 killing 99.9% germs in 30 seconds. Complies with BS EN 13727 killing 99.9% germs in 30 seconds. Unscented, making it ideal for use in food processing areas. To be used in a foaming dispenser.

**CL-074197**



### Green Apple Hair & Body Wash (5 Litre)

A universal, high viscosity, hair and body wash ideal for use in all shower and washroom areas. Leaves behind a crisp and fruity apple scent. A pH-balanced and effective formulation removes light to medium soiling. Rinses off easily. Contains added skin conditioning agents.

**CL-075522X5**



### Antibacterial Foam Hand Soap Pouches (3 Pack)

A mild effective formulation to remove light to medium soiling. Rinses off easily. Complies with BS EN 1276 killing 99.9% germs in 30 seconds. Complies with BS EN 13727 killing 99.9% germs in 30 seconds. Unscented, making it ideal for use in food processing areas. For use in a foam pouch dispenser.

**CL-074123 - 800ml**



### Perfumed Foam Hand Soap Pouches (3 Pack)

A clear blue foam soap with a rich and sweet jasmine scent. Designed for use in all front of house and public areas. More economical in use than an equivalent gel hand soap. Only suitable for use through foaming dispensers. Contains added skin conditioning agents.

**CL-074148 - 800ml**



### 70% Spray Hand Sanitiser (3 Pack)

A fast-drying spray hand sanitiser. Ideal for use when entering food production areas or before handling food. An alcohol-based product for use in any situation where microbial control is critical. Passes BS EN 13727 for antibacterial activity in 30 seconds at 20°C. Conforms to BS EN 14476.

**CL-073323 - 800ml**



### Alcohol Free Foam Hand Sanitiser Pouches (3 Pack)

An odourless, non-tainting alcohol-free sanitiser designed for frequent use. Ideal for use in clinics, hospitals, on entering food production areas or before handling food. Conforms to BS EN 1276 & BS EN 14476. Only suitable for use through foaming dispensers.

**CL-074117 - 800ml**



### A&G Jasmine & Apple Blossom Luxury Hand Wash (Single)

Combining the warm, heavy, opulent floral with fruity and animalic facets of Jasmine with the fresh, invigorating scent of apple blossom, leaves your hands feeling clean. Formulated with high quality perfumes, mild surfactants and moisturising agents.

**CL-AG-JAB-6X500 - 500ml**

**CL-AG-JAB-2X5 - 5 Litre**



### A&G Black Pepper & Ginseng Luxury Hand Wash (Single)

This energising fragrance, with the top note of black pepper adds instant brightness combined with the invigorating notes from ginseng rolled into a mild, luxurious hand soap that leaves skin clean. Formulated with high quality perfumes, mild surfactants and moisturising agents.

**CL-AG-BPG-6X500 - 500ml**

**CL-AG-BPG-2X5 - 5 Litre**



### Stainless Steel 500ml Bottle Holder (Single)

Produced from fine grade stainless steel. The high quality brushed finish brings style to any washroom and allows for the bottle to be secured in place to prevent tampering.

**CL-AGWALL - Bracket**

**CL-AGKEY - Spare Key**



### Grape Antibacterial Hand Wash (300ml)

Traditional Natural 300ml refillable Antibacterial Hand Wash Bottle is fragranced with the scent of sweet, juicy Grapes. This Traditional Natural 300ml Antibacterial Hand Wash Bottle is great for use in public areas or as a cost saving eco-conscious option within your rooms.

**HC-TAY0011 - 300ml**

**HC-TAY0016 - 5 Litre Refill**



### Green Tea Hand & Body Lotion (300ml)

Traditional Natural 300ml Hand and Body Lotion refillable Bottle is fragranced with the fresh scent of Green Tea. This Traditional Natural 300ml Hand and Body Lotion Bottle is great for use in public areas or as a cost saving eco-conscious option within your rooms.

**HC-TAY0015 - 300ml**

**HC-TAY0020 - 5 Litre Refill**



### Deluxe Single Wall Bracket for 300mls

Deluxe Single Wall Bracket. Rust resistant. Highly polished modern look and feel, our 300ml bottles fit perfectly in the holder. As these brackets are wall-mounted, they offer a professional and smart way to dispense our toiletry products.

**HC-164048 - Chrome**

**HC-164162 - Matt Black**

**HC-164161 - Rose Gold**



### Sicilian Lemon Shampoo & Conditioner (300ml)

Elevate your guest experience with our Traditional Natural 300ml Shampoo & Conditioner Bottle – a sustainable and cost-effective solution. An Invigorating Sicilian Lemon Fragrance: Offers a refreshing and uplifting scent that delights guests.

**HC-TAY0012 - 300ml**

**HC-TAY0017 - 5 Litre Refill**



### Green Tea & Oolong Bath & Shower Gel (300ml)

Traditional Natural 300ml Bath and Shower Gel Bottle is fragranced with the Green Tea and Oolong with extracts of Cedar. This product is great cost saving, eco-conscious option for within your rooms. SLS, Paraben & Phthalate free.

**HC-TAY0013 - 300ml**

**HC-TAY0018 - 5 Litre Refill**



### Deluxe Double Wall Bracket for 300mls

Deluxe Double Wall Bracket. Rust resistant. Highly polished modern look and feel, our 300ml bottles fit perfectly in the holder. As these brackets are wall-mounted, they offer a professional and smart way to dispense our toiletry products.

**HC-164169 - Chrome**

**HC-164164- Matt Black**

**HC-164163 - Rose Gold**



ECO FRIENDLY RANGE

## SUPER CONCENTRATES & REFILL BOTTLES

Maximum Eco by Greyland represents a revolutionary step in environmentally friendly cleaning.

This range of products has been formulated to be powerful, effective, but safer in use and with less negative environmental impact than many traditional cleaning chemicals and with a smaller footprint of 2 Litre concentrates.

Made from plant based, environmentally friendly ingredients to be fully user-friendly and biodegradable.

The Super Concentrate range combines optimum performance with environmental sustainability and cost in use for many different sectors.



Fill trigger bottle (750ml) with water, add 1 pump (15ml)



### SC1 All Surfaces & Floor Cleaner Concentrate (2L)

Highly versatile, naturally powerful cleaner for all surfaces and floors. Rapidly lifts grease, oils, stains and body fats. Suitable for use on hard surfaces, carpets and soft furnishings

- GR-2327-04 - 2L Concentrate
- GR-5091-81 - 750ml Refill Bottle
- GR-5091-89 - Spray Head



### SC2 Foodsafe Cleaner & Sanitiser Concentrate (2L)

Dual action, odourless and non-tainting formula cuts through grease and dried on food soiling. Ideal for use in kitchens, food preparation areas, hospitals and nursing homes. Independently tested and certified to EN1276 and EN14476 at a 2% dilution

- GR-2362-01 - 2L Concentrate
- GR-5091-82 - 750ml Refill Bottle
- GR-5091-89 - Spray Head



### SC3 Foodsafe Ultra Degreaser Concentrate (2L)

Powerful formula cuts through the heaviest grease, oil and fatty deposits. Non-perfumed, non-tainting degreaser. Ideal for use in kitchens, food preparation areas and food production sectors

- GR-2325-20 - 2L Concentrate
- GR-5091-83 - 750ml Refill Bottle
- GR-5091-89 - Spray Head



**SC4 Washroom Cleaner & Sanitiser Concentrate (2L)**

Rapidly removes watermarking and general soiling, cuts through bodyfat residue. Effective in hard and soft water areas. Independently tested and certified to EN1276 at a 2% dilution.



**SC7 Glass & Interior Cleaner Concentrate (2 Litre)**

Cleans glass and interior hard surfaces including windows, mirrors, glazed ceramics and plastic surfaces. Safe for use on high gloss laminates, polished granite and stainless steel. Evaporates leaving a clean, smear-free finish.



**2 Litre Pelican Pump for concentrates (15ml Dose)**

Helping to reduce wastage and increase productivity, this Pelican Pump for 2 Ltr bottles has been manufactured for repeated use. The plastic construction boasts a push down handle for easy dispense and will release a dosage of 15ml

- GR-2363-03 - 2L Concentrate
- GR-5091-84 - 750ml Refill Bottle
- GR-5091-89 - Spray Head

- GR-2367-01 - 2L Concentrate
- GR-5091-85 - 750ml Refill Bottle
- GR-5091-89 - Spray Head

- GR-5091-29 - 15ml Dose



**Maximum Eco Washing Up Liquid (5 Litre)**

An odourless, pH neutral detergent, ideal for the economic cleaning of dishes and most hard surfaces and is safe for use with septic tanks. Maximum Eco Washing Up Liquid is formulated to minimise the impact on the environment whilst not compromising on performance or quality.



**Spray & Wipe Ultra Disinfectant**

Spray & Wipe Ultra is a high performance disinfectant with broad spectrum activity against bacteria, yeasts and viruses. Tested and certified effective against SARS-CoV-2, the COVID-19 virus.

- GR-7662-21 - 750ml
- GR-1762-21 - 5 Litre



**Eco Lemon Hard Surface Cleaner (5 Litre)**

An easy to use, neutral hard surface cleaner imparting a zesty lemon fragrance. Ideal for cleaning floors, walls, kitchen equipment etc. General cleaning of floors, walls, equipment etc.

- GR-6624-04

- GR-1742-00



**Luxury Foaming Hand Soap (5 Litre)**

A luxury instant foaming soap. Only a small amount is required to provide effective skin cleansing. No water required to create a lather. Highly economical.

- GR-1771-11



**Stainless Steel Cleaner & Polish (750ml)**

A low odour and non-tainting cleaner and polish designed for use on stainless steel and other bright metals. Leaves a high gloss protective coating resistant to finger marking.

- GR-7567-08



**BT4 Odour & Stain Digester (1 Litre)**

Effective where soiling such as bodily fluids or spilt beverages have absorbed into the fabric or flooring. Ideal for preventing odours in small bore pipes from sinks, baths, showers. Non-harmful and compatible with septic tanks.

- GR-6998-57



**BT4 Universal Washroom Cleaner (750ml)**

Removes and prevents build up of limescale and uric acid within pipe systems. Eradicates odour issues and blockages. Offers significant water saving benefits. Safe to use with waterless urinals, BT6 Urinal Blocks and compatible with septic tanks

**GR-7563-06**



**Triple Clean RTU Washroom Cleaner (750ml)**

A foaming ready to use bactericidal cleaner for use on most washroom surfaces. Effective against most common forms of bacteria including MRSA. Conforms to EN1276.

**GR-7563-01**



**Citrus Ultra 4-in-1 Washroom Cleaner (5 Litre)**

A concentrated formula designed to clean and deodorise most washroom surfaces in hard water areas. Removes limescale build-up and organic deposits. Safe for use on porcelain, stainless steel, chrome, ceramic and tiled surfaces.

**GR-1763-27**



**Heavy Duty Mould & Mildew Remover (750ml)**

A powerful grout cleaner with an alkaline formulation designed to effectively remove mould, mildew and fungus. Suitable for use ceramic and tiled surfaces in washrooms, bathrooms and leisure facilities.

**GR-7662-71**



**Limescale Remover RTU (750ml)**

A ready to use limescale remover for use on a variety of hard surfaces inc. porcelain, stainless steel, chrome etc. Suitable for descaling washroom items such as shower heads and also appliances such as kettles.

**GR-7561-19**



**Bubblegum Concentrate Deodorising Fluid (5 Litre)**

A concentrated bubblegum scented deodoriser that neutralises unpleasant odours. Ideal for use in areas such as washrooms, public toilets, waste disposal chutes, waste tips, sewage farms and also on dirty carpets.

**GR-6664-31**



**Spring Fresh Toilet Cleaner (1 Litre)**

Spring Fresh fragrant toilet cleaner which effectively cleans and descales toilets and other ceramic surfaces. Safe for use on stainless steel. Leave for 5 minutes then aggitate with a brush.

**GR-8163-53**



**Purple 4-Way Toilet Cleaner & Descaler (1 Litre)**

A Multi action 4 way toilet descaler. Cleans, descales, deodorises & stainless steel safe. This is a powerful limescale remover and descaler for use on most washroom surfaces, including stainless steel and chrome fittings. (Do not use on vitreous enamel)

**GR-8163-32**



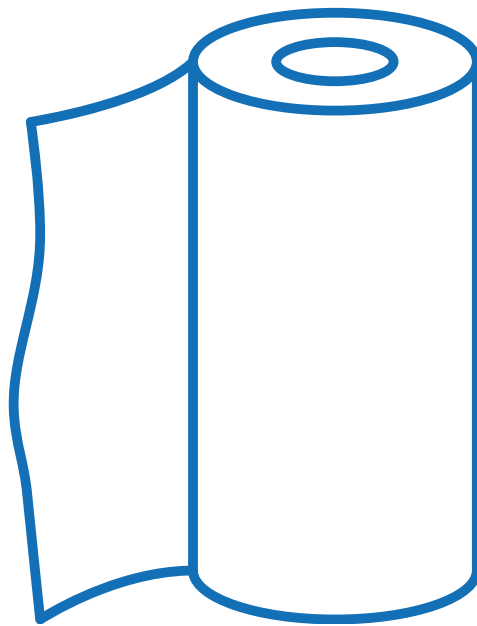
**Graffiti Remover (750ml)**

A blend of low toxic solvents that will remove a wide range of paints, crayons, pencil and inks from felt tip and ball point pens. Suitable for use on all solvent resistant surfaces.

**GR-7639-00**

# PAPER HYGIENE

---



## *Paper Hygiene*

---

- 43** Raphael Washroom Systems
- 45** Paper Hygiene Products & Dispensers  
(Centrefeed, Hand Towels, Toilet Rolls, Tissues)
- 47** Bathroom Accessories



## THE SUSTAINABLE WASHROOM SOLUTION

Designed with the end user at the heart of the process following 4 key principles:



### 1. Improving Hygiene

- Contactless dispensing options
- BioKleen™ treated contact areas
- Enclosed paper - protecting them from the washroom environment



### 2. Cut Waste & Save Money

- Zero waste dispensing options
- Controlled dispensing reducing overuse
- Lockable dispensers stopping pilferage & vandalism



### 3. A Sustainable Washroom System

- Paper products made from FSC certified base sheet
- 100% recycled paper options
- All packaging is recyclable (Part of the Green Loop initiative)



### 4. Deliver Functional Excellence

- High capacity dispensers with constant availability
- Easy to use dispensers
- Hard wearing dispensers

## Z FOLD 1000 - HAND TOWEL DISPENSER

### Features & Benefits

<b>Robust One Sheet Dispensing</b>	Reducing overuse, limiting consumption and reducing cost.
<b>Contactless Dispensing</b>	User doesn't need to touch the dispenser to access paper, reducing the spread of germs.
<b>Translucent Dispensers</b>	Offering 'at-a-glance' replenishment checks, with no need to open dispensers, saving time.
<b>High Capacity - Up to 1000 towels</b>	Long lasting perfect for high footfall washrooms, reduces replenishment visits.
Dispensers are available in two colourways - White & Black	
<b>White Z- Fold Hand Towels (Qty 3000)</b>	- Strong & embossed - 2ply - 3000 towels - Soft touch & flushable - Interleaved - dispensing one sheet at a time

## MP-FHTSMORA



## MP-FHTWHTRA

## MP-HZ0492RA



**UPGRADE YOUR DISPENSERS FOR FREE - CALL LBK!**

**MANUAL SHOT SOAP DISPENSER**



**MP-MSDSMORA**



**MP-MSDWHTRA**



**MP-SOLOTRA**

Features & Benefits	
<b>Controlled &amp; Generous shot size</b>	Reducing overuse, therefore reducing cost.
<b>No Drip Dispensing</b>	No Waste or washroom mess
<b>Translucent Dispensers</b>	Offering 'at-a-glance' replenishment checks, with no need to open dispensers, saving time.
<b>New Nozzle with Every Cartridge</b>	Reduces washroom bacteria harbouring
Dispensers are available in two colourways - White & Black	
<b>1 Litre Lotion Foam Soap Cartridges (Qty 6)</b>	- Mild formulation gentle to hands - Leaves hands feeling smooth & conditioned - Up to 1250 shots

**VERSATWIN TOILET TISSUE DISPENSER**

Features & Benefits	
<b>Infinity Paper System</b>	Only one roll is used at a time, delivering reduced waste & cost saving benefits.
<b>BioKleen Treated</b>	Improves hygiene by inhibiting bacteria growth & spread
<b>Translucent &amp; Compact Dispensers</b>	Offering 'at-a-glance' replenishment checks, with no need to open dispensers, saving time.
<b>Up To 400m Capacity</b>	Reduce 'run out' potential and replenishment visits, saving time.
Dispensers are available in two colourways - White & Black	
<b>VersaTwin Toilet Roll 125m (Qty 24)</b>	- 125m roll length - 337 sheets - Recycled 2ply paper - Fast breakdown in water - Soft touch



**MP-VTWHTRA**



**MP-VTSMORA**



**MP-VT2125RF**

**TWINJUMBO TOILET TISSUE DISPENSER**

Features & Benefits	
<b>Infinity Paper System</b>	Only one roll is used at a time, delivering reduced waste & cost saving benefits.
<b>BioKleen Treated</b>	Improves hygiene by inhibiting bacteria growth & spread
<b>Translucent Dispensers</b>	Offering 'at-a-glance' replenishment checks, with no need to open dispensers, saving time.
<b>Up To 800m Capacity</b>	Long lasting rolls perfect for high footfall washrooms, reduces replenishment visits.
Dispensers are available in two colourways - White & Black	
<b>TwinJumbo Toilet Roll 310m (Qty 12)</b>	- 310m roll length - 837 sheets - Recycled 2ply paper - Fast breakdown in water - Soft touch



**MP-TJWHTRA**



**MP-TJSMORA**



**MP-JT2310R**

**MOST POPULAR**



**Blue 2ply Embossed Centrefeed 150m Rolls (Case 6)**

The essential everyday 'blue roll' centrefeed, found in every commercial kitchen and janitorial cupboard. Absorbent and strong, excelling with economical bulk wiping or heavy duty precision wiping, thanks to its embossed texture.

- Paper Type: Recycled & Embossed
- Colour: Blue 2 Ply
- Core Size (mm): 60
- Roll Width (mm): 175mm
- Roll Length: 150m

**MP-CFR018N**



**White 2ply Embossed Centrefeed 150m Rolls (Case 6)**

Embossed centrefeed that is suitable for wiping up spills, drying hands in the kitchen, and many many other applications.

- Paper Type: Recycled & Embossed
- Ply: 2
- Colour: White
- Length: 150m
- Width: 175mm
- Core: 60mm

**MP-CFR016N**



**White Centrefeed Roll Dispenser (Single)**

This dispenser is conveniently lockable to ensure it is fully tamper-proof and hygienic. The dispenser fits all centrefeed rolls, including our blue and white centrefeed 2 ply rolls. Simply open the dispenser, begin unfolding the blue or white roll from the core and thread it through the dispensing hole.

Size: 230 x 230 x 350mm.

**MP-DP007**



**Green C-Fold 1 Ply Hand Towels (Case 2640)**

Green C-Fold hand towels are made from recycled paper. These hand towels can be used through a dispenser, or they can be put on a shelf. They are not interleaved.

- Paper Type: Recycled
- Colour: Green
- Ply: 1
- Sheet Width (mm) 230mm
- Sheet Length (mm) 310mm
- 2640 Towels per Case

**MP-CFG001**



**Blue Z-Fold 1 Ply Hand Towels (Case 3000)**

Blue Z-Fold hand towels are made from recycled paper. Each towel is interleaved so when you pull a towel out from the dispenser it leaves the next one ready.

- Paper Type: Recycled
- Colour: Blue
- Ply: 1
- Sheet Width (mm) 242mm
- Sheet Length (mm) 240mm
- 3000 Towels per Case

**MP-ZFB001**



**White Z-Fold 2 Ply Hand Towels (Case 3000)**

These Z-fold hand towels are manufactured from 2 ply pure pulp for super strong and strong performance. Z-fold only allows one hand towel to be dispensed at a time, also reducing waste.

- Paper Type: Pure Pulp
- Colour: White
- Ply: 2
- Sheet Width (mm) 235mm
- Sheet Length (mm) 240mm
- 3000 Towels per Case

**MP-ZFW002**



**White Paper Towel Dispenser (Single)**

A Versatile design: Fits interleaved, C-Fold, Z-fold, Multi-fold paper towels. Single towel dispensing minimises waste. Large front window to check stock levels. Easy to service and restock. Holds 2/3 sleeves of hand towels.

Size: 290 x 145 x 425mm.

**MP-DP001**



### White Mini Jumbo Toilet Roll 62mm Core (Case 12)

Made from recycled paper, mini jumbo toilet rolls are longer than standard, making them the perfect choice for busy washroom locations.

- Paper Type: Recycled
- Ply: 2
- Colour: White
- Length: 150m (405 sheet)
- Width: 90mm
- Core: 2.25" / 62mm

**MP-ERJ001N**



### White Mini Jumbo Toilet Roll 80mm Core (Case 12)

Made from recycled paper, mini jumbo toilet rolls are longer than standard, making them the perfect choice for busy washroom locations.

- Paper Type: Recycled
- Ply: 2
- Colour: White
- Length: 150m (405 sheet)
- Width: 90mm
- Core: 3" / 80mm

**MP-ERJ002N**



### Mini Jumbo Roll Dispenser (White)

Keep toilet roll stored tidily with this mini jumbo roll dispenser. Smaller in size, the dispenser can hold mini jumbo rolls whilst being compact but still delivering a good volume. This is great for installing in smaller spaces that are used often, such as public bathrooms. Features a self-locking cover, supplied with universal key. Size: 220 x 145 x 275mm.

**MP-DP006**



### Whisper 320 sheet 2ply Toilet Rolls (Case 36)

Whisper 320 is a 2 ply laminated and flower embossed toilet roll that offers, strength, softness and a high sheet count. Eco-friendly packaging, FSC-certified materials used.

- Paper Type: Pure Pulp
- Embossed premium
- Ply: 2
- Colour: White
- Length: 33.6m (320 sheet)
- Sheet Width: 95mm

**MP-STR002**



### Whisper Gold 3ply Toilet Rolls (Case 40)

Premium 3-ply luxury toilet rolls for ultimate comfort and absorbency. 170 Laminated & pattern embossed sheets per roll. Eco-friendly packaging, FSC-certified materials used.

- Paper Type: Pure Pulp
- Embossed Luxury
- Ply: 3
- Colour: White
- Length: 21m (170 sheet)
- Sheet Width: 110mm

**MP-STR018**



### Whisper Eco Recycled 2ply Toilet Rolls (Case 40)

Whisper Eco embodies the perfect blend of comfort and eco-consciousness, setting a new standard in personal care. Crafted from FSC® certified, 100% recycled paper. Sold in plastic-free packaging,

- Paper Type: 100% Recycled
- Embossed Recycled
- Ply: 2
- Colour: White
- Length: 23m (210 sheet)
- Sheet Width: 107mm

**MP-TLECO2**



### Chrome Toilet Roll Holder (Single)

A single, lockable and tamper-proof traditional toilet roll holder, made from steel with a chrome finish for easy cleaning. Size: 150 x 70 x 110mm.

**RS-100058**



### Bulk Pack 2ply Toilet Tissue (Case 36)

Bulk Pack Toilet Tissue with 36 x 240 sheets which is an amazing value 8640 sheets per case. Made from quality tissue. Each tissue is individual and being interleaved is presented fully open once dispensed.

- Paper Type: Pure Pulp
- Ply: 2
- Colour: White
- Sheets: 8640

**MP-BPT002**



### Bulk Pack Toilet Tissue Dispenser (White)

This dispenser for Bulk Pack toilet tissues is made from smooth injection moulded plastic and features a self-locking cover with a universal key supplied. The approx paper capacity for this dispenser is 2/3 Sleeves

- Width: 140mm
- Depth: 140mm
- Height: 280mm

**MP-DP003**



### Katrin Eco System 800 Toilet Rolls (Case 36)

The Katrin classic system boasts a large roll size (800 sheets). The dispenser holds two rolls, and the 2<sup>nd</sup> one drops down automatically, when the 1<sup>st</sup> one is used. Suitable for any area but aids cost savings in high traffic areas

- Ply: 2
- Colour: White
- Length: 150m
- Width: 175mm
- Core: 60mm

**MP-K103424**



### Katrin Eco System Dispenser (White)

Dispenser holds two Katrin System toilet rolls and provides seamless dispensing with its drop-down roll system and adjustable roll brake. It can be refilled while the second roll is in use, so tissue is always available. Holds two Katrin System toilet rolls, each 800 sheets, so 1600 sheets for a full dispenser.

- Length/Depth: 172mm
- Width: 152mm
- Height: 400mm

**BZL-069344W**



### Katrin Eco System Dispenser (Black)

Dispenser holds two Katrin System toilet rolls and provides seamless dispensing with its drop-down roll system and adjustable roll brake. It can be refilled while the second roll is in use, so tissue is always available. Holds two Katrin System toilet rolls, each 800 sheets, so 1600 sheets for a full dispenser.

- Length/Depth: 172mm
- Width: 152mm
- Height: 400mm

**BZL-069344B**



### Mini Centrefeed Toilet Rolls (Case 12)

Cut down on the cost of your disposables by switching to this pack of mini centrefeed toilet rolls. These rolls will give out only one sheet of paper at a time. This can reduce paper consumption by as much as 40% to save you money and minimise your environmental impact.

- Ply: 2
- Colour: White
- Length: 100m
- Width: 130mm

**MP-JCCF1001**



### SmartOne Mini Centrefeed Toilet Roll Dispenser (White)

It's elevation design is both functional and modern ideal for the demands of low to medium-traffic washrooms. Single-sheet dispensing reduces consumption by up to 40% compared to traditional jumbo toilet roll dispensers.

- Colour: White
- Material: Plastic/Metal lock
- Length/Depth: 156mm
- Width: 219mm
- Height: 219mm

**BZL-064362**



### SmartOne Mini Centrefeed Toilet Roll Dispenser (Black)

It's elevation design is both functional and modern ideal for the demands of low to medium-traffic washrooms. Single-sheet dispensing reduces consumption by up to 40% compared to traditional jumbo toilet roll dispensers.

- Colour: Black
- Material: Plastic/ Metal lock
- Length/Depth: 156mm
- Width: 219mm
- Height: 219mm

**BZL-064363**



### Facial Tissues in Cube Box (70 sheet)

Whisper Luxury Facial Tissues in a cube Box.

- Paper Type: Pure Pulp
- Colour: White
- Ply: 2
- Sheets 70 per box
- Length (mm) 210mm
- Width (mm) 183mm

**MP-FAC003**



### Facial Tissues in Rectangular Box (100 sheet)

Whisper Luxury Facial Tissues in a rectangular Box.

- Paper Type: Pure Pulp
- Colour: White
- Ply: 2
- Sheets 100 per box
- Length (mm) 210mm
- Width (mm) 183mm

**MP-FAC004**



### Chrome Cube Tissue Box Cover (Single)

This is an elegant way to cover your cubed tissue boxes. It is a very simple but effective solution. Just put your box of tissues onto the base and cover with the top. Helping to protect the tissues from spillage accidents and moisture in the air Size: 124mm x 124mm x 132mm

**HC-TBCCC**



**Chrome Rectangular Tissue Box Cover (Single)**

This is an elegant way to cover your rectangular tissue boxes. It is a very simple but effective solution. Just put your box of tissues onto the base and cover with the top. Helping to protect the tissues from spillage accidents and moisture in the air  
Size: 255mm x 139mm x 64mm

**HC-TBCLC**



**Chrome Toilet Brush & Holder (Single)**

This smart, slim, chrome toilet brush is ideal for hotel bathrooms of all sizes. It includes a washable inner bin that enables easy, hygienic cleaning. With a silicone brush for easy cleaning.  
Size: 40(h) x 11.2(dia) cm.

**HC-168161**



**Individually Wrapped Flexy Glasses 8.8oz (Pack 1000)**

Produced from the ultimate extra clear polypropylene material, which can be easily collected and recycled. Strong, flexible and transparent, the glasses are designed to be stacked efficiently and are robust in use. Each cup wrapped so it's kept sanitary in the bathroom for each guest.

**EG-C2302**



**Chrome Hygiene Bag Dispenser (Single)**

Keep your hygiene bags in one place with this convenient Hygiene bag dispenser. This is a discreet way to dispose of sanitary products before discarding them in the appropriate bin. This product is simple to install in any bathroom environment. Size: 140mm x 90mm x 27mm

**HC-HYGDISPCHR**



**3 Litre Chrome Pedal Bin (Single)**

3ltr Chrome Pedal Bin. Keep your bathrooms clean and tidy with this smart chrome pedal bin. Compact and easy to clean and empty with a removable inner bin.  
Size: 25(h) x 17(dia)cm.

**HC-169014**



**White Rubber Bath Mat (Single)**

Your guests will avoid slipping with this rubber bathmat that has an abundance of safety suckers and drainage holes. They are made from soft rubber and are supplied in white so they will blend in with your bathroom other bathroom accessories and decor. Size: 78 x 38cm.

**HC-BM300WH**



**Hygiene Bag Refill Pack (25 bags per pack)**

These great quality hygiene bag refills are ideal for a wide variety of establishments including hotels, guesthouses, and resorts. As the bags are easy to dispense and help you maintain a sanitary environment  
Size: 125 x 85 x 21mm.

**HC-HYGREFBOX**



**Guest Laundry Bags (100 pack)**

Guest laundry bags for guests to leave their laundry in. There is space available for the Guest Name, Room number and Date. Size: 55 x 40cm.

**HC-LAUNDBAG100**



**Towel Conservation Sign (Single)**

A polite self-adhesive towel conservation sign. A convenient way to reduce time and laundry costs by letting your hotel guests know of a way to notify your housekeepers that the towels need to be changed.  
Size: 10 x 10cm.

**HC-TOWCONSIGN**

# DISPOSABLES

---



## *Disposables*

---

- 48** Napkins
- 49** Hot Drinks
- 50** Cold Drinks
- 51** Sundries
- 52** Cutlery
- 53** Food Packaging



**Cocktail Napkins 2 ply - 23cm (Pack 200)**

Perfect for your parties and events, these high quality Cocktail Napkins offer a classic design, matching perfectly with all bar and event settings.

- Ply: 2 ply
- Folded: ¼ Fold
- Size: 23cm
- Pack Size: 200

-  **PO-2424BK - Black**
-  **PO-2424WH - White**



**Dinner Napkins 2 ply - 40cm 4-Fold (Pack 2000)**

Dinner Paper Napkins 2 Ply 40cm 4 Fold napkins are Ideal for outdoor caterers and commercial use in restaurants and bars. Pre-folded for ease.

- Ply: 2 ply
- Folded: 4 Fold
- Size: 40cm
- Pack Size: (16 x 125 napkins)

-  **PO-4024BK - Black**
-  **PO-4024WH - White**
-  **PO-4024BM- Buttermilk**
-  **PO-4024CP - Champagne**
-  **PO-4024BX- Burgundy**



**Dinner Napkins 3 ply - 40cm 8-Fold (Pack 1000)**

Dinner Napkins 3 Ply 40cm 8 Fold napkins are Ideal for outdoor caterers and commercial use in restaurants and bars. Pre-folded for ease.. Pre-folded for ease.

- Ply: 3 ply
- Folded: 8 Fold
- Size: 40cm
- Pack Size: (10 x 100 napkins)

-  **PO-4038BK - Black**
-  **PO-4038WH - White**
-  **PO-4038CP - Champagne**
-  **PO-4038BX - Burgundy**



**Lunch Napkins 2 ply - 33cm 4-Fold (Pack 2000)**

Luncheon Paper Napkins 2 Ply 33cm 4 Fold napkins are Ideal for foodservice and events. Made from Eco recycled raw materials and completely biodegradable. Pre-folded for ease.

- Ply: 2 ply
- Folded: 4 Fold
- Size: 33cm
- Pack Size: (16 x 125 napkins)

-  **PO-3324BK - Black**
-  **PO-3324WH - White**
-  **PO-3324NB - Navy Blue**
-  **PO-3324BX - Burgundy**



**Dinner Napkins 2 ply - 40cm 8-Fold (Pack 2000)**

Dinner Napkins 2 Ply 40cm 8 Fold napkins are Ideal for outdoor caterers and commercial use in restaurants and bars. Pre-folded for ease.

- Ply: 2 ply
- Folded: 8 Fold
- Size: 40cm
- Pack Size: (16 x 125 napkins)

-  **PO-4028BK - Black**
-  **PO-4028WH - White**
-  **PO-4028RC - Recycled**
-  **PO-4028CP - Champagne**
-  **PO-4028FG - Forest Green**



**Airlaid Tablin Dinner Napkins - 40cm 4 & 8-Fold (Pack 500)**

Tablin Airlaid Luxury 8 Fold Grey Napkins have a linen like feel and are a great alternative to linen without the expensive laundry costs. They have a luxurious quality feel.

- Style: Linen type thickness & feel
- Folded: see below
- Size: 40cm
- Pack Size: (10 x 50 napkins)

-  **PO-4044WHDUN - White - 4-Fold**
-  **PO-4048WHDUN - White - 8-Fold**
-  **PO-4048BKDUN - Black - 8-Fold**
-  **PO-4048BMDUN - Buttermilk - 8-Fold**
-  **PO-4048GRDUN - Grey - 8-Fold**



**Lunch Napkins 2 ply - 33cm 8-Fold (Pack 2000)**

Luncheon Napkins 2 Ply 33cm 8 Fold napkins are Ideal for foodservice and events. Made from Eco recycled raw materials and completely biodegradable. Pre-folded for ease.

- Ply: 2 ply
- Folded: 8 Fold
- Size: 33cm
- Pack Size: (16 x 125 napkins)

-  **PO-3328BK - Black**
-  **PO-3328WH - White**
-  **PO-3328NB - Navy Blue**
-  **PO-3328RD - Red**



**Premium Dinner Napkins 3 ply - 40cm 4-Fold (Pack 1000)**

Dinner Paper Napkins 3 Ply 40cm 4 Fold napkins are Ideal for outdoor caterers and commercial use in restaurants and bars. Pre-folded for ease.

- Ply: 3 ply
- Folded: 4 Fold
- Size: 40cm
- Pack Size: (10 x 100napkins)

-  **PO-4034BK - Black**
-  **PO-4034WH - White**
-  **PO-4034CP - Champagne**



**White Paper Napkin Bands (Pack 2000)**

Effortlessly enhance your table presentation with this pack of white self-adhesive paper napkin bands. Featuring a self-adhesive strip, these paper napkin rings allow you to quickly and easily secure your napkins and cutlery in place. Size: 40mm (W) x 110mm (L)

**UR-GD126**



Other colours available on request!



### Kraft Ripple Wall Hot Drink Cups (Pack 500)

Manufactured from premium food grade cup stock, single poly-coated Double Wall/Triple Layer Kraft Ripple Wrap Paper Cups in plain brown.

**DIS-50011 - 4oz - 62 dia x 62mm (Pack 1000)**

**DIS-50005 - 8oz - 80 dia. x 90mm**

**DIS-50006 - 12oz - 90 dia. x 110mm**

**DIS-50004 - 16oz - 90 dia. x 135mm**



### Black Ripple Wall Hot Drink Cups (Pack 500)

Manufactured from premium food-grade cup stock these Black Ripple Wrap Insulated Paper Cups ensure drinks stay hot and hands are protected from heat - A premium coffee-to-go product.

**DIS-50018 - 4oz - 62 dia x 62mm (Pack 1000)**

**DIS-50008 - 8oz - 80 dia. x 90mm**

**DIS-50009 - 12oz - 90 dia. x 110mm**

**DIS-50010 - 16oz - 90 dia. x 135mm**



### White Domed Sip-Thru Lids for hot drinks (Pack 1000)

Ideal for busy coffee-drinkers on the go, these disposable plastic domed white sip-thru lids fit comfortably onto suitable paper hot cups, offering increased safety for the customer while also helping to keep their beverage at optimum temperature.

**DIS-44732 - 4oz Lids - 62mm**

**DIS-44736GB - 8oz Lids - 80mm**

**DIS-44938G- 10-20oz Lids - 90mm**



### 8oz Gallery Design Double Wall Hot Cups (Pack 500)

Beautiful double wall hot cups with high-quality print art finish. For coffee, tea and all hot drinks, or soup to go. Two layers of sustainably-sourced board with a plant-based PLA lining. An assorted case of three artist designs, mixed designs in each sleeve. Made from plants, designed for industrial composting. Size: 90mm high, 79mm top dia and 57mm bottom dia.

**VW-VDW-A08-VL**



### 12oz Gallery Design Double Wall Hot Cups (Pack 500)

Beautiful double wall hot cups with high-quality print art finish. For coffee, tea and all hot drinks, or soup to go. Two layers of sustainably-sourced board with a plant-based PLA lining. An assorted case of three artist designs, mixed designs in each sleeve. Made from plants, designed for industrial composting. Size: 110mm high, 89mm top dia and 60mm bottom dia.

**VW-VDW-A12-VL**



### Eco Domed Sip-Thru Lids for hot drinks (Pack 1000)

Sip-through lid for Vegware's hot cups. A lid for hot coffees or teas to go. Point the 'seam here' to the inner cup seam. Made from reclaimed plant fibre. Off-white colour, embossed with Vegware eco messaging.

**VW-BLID79-VL - 8oz Lids**

**VW-BLID89-VL - 12-16oz Lids**



### 8oz Feel Good Double Wall Hot Cups (Pack 500)

Feel good double wall hot cups with each cup including a feel good message For coffee, tea and all hot drinks, or soup to go. Two layers of sustainably-sourced board with a plant-based PLA lining. Available in a mixed sleeves of five cheerful colours. Made from plants, designed for industrial composting. Size: 95mm high, 80mm top dia and 50.3mm bottom dia.

**VW-VDW-FG08-VL**



### 12oz Feel Good Double Wall Hot Cups (Pack 500)

Feel good double wall hot cups with each cup including a feel good message For coffee, tea and all hot drinks, or soup to go. Two layers of sustainably-sourced board with a plant-based PLA lining. Available in a mixed sleeves of five cheerful colours. Made from plants, designed for industrial composting. Size: 112mm high, 90mm top dia and 58.6mm bottom dia.

**VW-VDW-FG12-VL**



### Eco Domed Sip-Thru Lids for hot drinks (Pack 1000)

Sip-through lid for Vegware's hot cups. A lid for hot coffees or teas to go. Point the 'seam here' to the inner cup seam. Made from reclaimed plant fibre. Off-white colour, embossed with Vegware eco messaging.

**VW-BLID79-VL - 8oz Lids**

**VW-BLID89-VL - 12-16oz Lids**



### **Tulip Smoothie Cups rPET (Packs 1250/1000)**

Plastic Smoothie Cups manufactured from Perfectly clear recyclable thermoformed Polyethylene Terephthalate (rPET).

12oz Size: 122mm high, 78mm dia.

16oz Size: 115mm high, 90mm dia

**DIS-18203 - 12oz - Pack qty 1250**

**DIS-18202 - 16oz - Pack qty 1000**



### **Straw Slot Smoothie Lid rPET (Packs 1250/1000)**

Plastic Straw Slot Lids to fit 12oz or 16oz Smoothie Cups. Manufactured from Perfectly clear recycled thermoformed Polyethylene Terephthalate (RPET)

**DIS-18502 - 12oz Lids - Pack 1250**

**DIS-18606 - 16oz Lids - Pack 1000**



### **Domed Smoothie Lid with hole rPET (Packs 1250/1000)**

Plastic Domed Lids with hole to fit 12oz or 16oz Smoothie Cups. Manufactured from Perfectly clear recycled thermoformed Polyethylene Terephthalate (RPET)

**DIS-18601 - 12oz Lids - Pack 1250**

**DIS-18605 - 16oz Lids - Pack 1000**



### **Flexy Glass Recyclable - 1/2 pint to brim CE (Pack 1000)**

These Flexy Glass Recyclable Half Pint to Brim Cups are the perfect option for serving cold drinks such as beer, cider, juices and sodas for all hospitality events. They have a capacity of 284ml/ 10oz to the brim and are CE marked for legal compliance.

**EG-F612AC**



### **Flexy Glass Recyclable - Pint to brim CE Mark (Pack 1000)**

These Flexy Glass Recyclable Pint to Brim Cups are the perfect option for serving cold drinks such as beer, cider, juices and sodas for all hospitality events. They have a capacity of 568ml/ 20oz to the brim and are CE marked for legal compliance.

**EG-F616C**



### **Flexy Glass Recyclable - Hi Ball cups (Pack 1000)**

These Flexy Glass Recyclable Hi-Ball cups are the perfect option for serving cold drinks such as G&Ts, cocktails, Spirits & Mixers and cold drinks at indoor and outdoor events. Designed with a step-in base for maximum stability and a handy feature as easier for staff to unpack and separate the cups. They have a capacity of 360ml to brim.

**EG-RG615**



### **Flair Recyclable PP Wine Glasses 175ml (250 Pack)**

Clear one-piece design disposable wine glasses which are recyclable. A short stem and curved edges give these plastic wine glasses all the sophistication of traditional glassware but suitable for events. The sturdy polypropylene material ensures these glasses have more than enough strength to last busy services without breaking. Capacity: 6¼oz / 175ml

**EG-605**



### **Flair Recyclable PP Wine Glasses 235ml (300 Pack)**

Clear one-piece design disposable wine glasses which are recyclable. A short stem and curved edges give these plastic wine glasses all the sophistication of traditional glassware but suitable for events. The sturdy polypropylene material ensures these glasses have more than enough strength to last busy services without breaking. Capacity: 8¼oz / 235ml.

**EG-606**



### **Disposable Champagne Flutes 135ml (150 Pack)**

Keep the party bubbling away with 135ml disposable champagne flutes. The sleek one-piece design means these champagne flutes have all the elegance of glassware. A sturdy polypropylene construction means these disposable champagne flutes have more than enough strength to last through busy services without breaking. Capacity: 6.15oz / 175ml.

**EG-C7026**



### Wooden Stirrers (Pack 1000)

Our Wooden Stirrers are renewable, recyclable and biodegradable material provided from well-managed forests. These wooden stirrers, ideal for tea or coffee, We carry 2 sizes: 5.5"/140mm size & 7"/180mm.

**DIS-81006 - 5.5"/140mm size**

**DIS-81010 - 7"/180mm size**



### 2 & 4 Cup Moulded Pulp Fibre Carriers (Packs 360 / 180)

Keep your drinks-to-go service running smoothly by offering customers these recyclable cup carrier trays. Made to deliver a tight grip, these trays make it easy for customers to safely carry large drink orders. Moulded Pulp Fibre Cup carriers for drinks are biodegradable, compostable and recyclable.

**DIS-20250 - 2 Cup Carrier - Qty 90**

**DIS-20260 - 4 Cup Carrier - Qty 90**



### Red Striped Smoothie/Bubble Tea Straws (Pack 200)

These large cross-cut straws are perfect for bubble tea and smoothies as they have a wide 12mm bore. They are made from high quality material which makes them very strong and allows them to be resilient in liquid for a lengthy period. Size: 200mm x 12mm bore.

**EG-378BARBERREAPER**



### 5.5" Black Paper Cocktail / Sip Straws (Pack 250)

These black sip straws have a bore of 6mm. Made from natural cellulose paper sourced from responsibly managed forests and are FSC® certified. They are strong, and have an excellent dwell time, thanks to their 3-ply construction using 300-350gsm paper and can be recycled. Size: 140mm x 6mm bore.

**EG-391PAPERSIPBLFE**



### 8" Black Paper Drinking Straws (Pack 250)

These black paper drinking straws have a bore of 6mm. Made from natural cellulose paper sourced from responsibly managed forests and are FSC® certified. They are strong, and have an excellent dwell time, thanks to their 3-ply construction using 300-350gsm paper and can be recycled.

Size: 200mm x 6mm bore.

**EG-398BLPAPERFE**



### 8" Red Striped Paper Drinking Straws (Pack 250)

These traditional red & white stripe paper straws have a bore of 6mm and is ideal for most drinks. They are strong, and have an excellent dwell time, thanks to their 3-ply construction using 300-350gsm paper. Size: 200mm x 6mm bore.

**EG-398BARBERREAPERFE**



### Bamboo Looped Skewers 90mm (Pack 100)

These 90mm looped bamboo skewers are a visually appealing option for various culinary uses, from skewering olives in cocktails to canapes at a party. Made from FSC® 100% certified Bamboo. Size: 3mm x 90mm

**EG-316W**



### Bamboo Gun Shaped Skewers 180mm (Pack 1000)

Serve your canapes and buffet favourites in a practical way with these 180mm biodegradable bamboo gun style skewers. The bamboo material used to make these skewers means they are commercially compostable. Note: These are not oven or microwave safe.

Size: 3mm x 180mm

**DIS-81409**



### Wooden Cocktail Sticks (Pack 1000)

Wooden cocktail sticks are the perfect companion for all manner of cocktail garnish. Whether skewering olives for a martini or cherries for a Manhattan, they are an essential tool for creating visually appealing and enjoyable drinks.

**BM-3316**



### Compostable Plant-based Bagasse Cutlery (Packs of 100)

Made from 100% reclaimed agricultural waste, eGreen's new bagasse cutlery surpasses the performance of wood and paper and is equal to that of plastic, with better eco credentials. They will break down naturally in the environment. No taste, smooth to the touch

**EG-161 - Knife - 165mm**

**EG-162 - Fork - 165mm**

**EG-163 - Spoon - 145mm**



### Paper Cutlery (Packs of 100)

This innovative product gives you the eco and sustainability without compromising the users experience, No taste, smooth to the touch and pleasant mouth sensation. Constructed from 9 layers making it a robust and strong cutlery option.

**EG-311PAPER - Knife - 158mm**

**EG-312PAPER - Fork - 158mm**

**EG-313PAPER - Spoon - 158mm**



### Birchwood Wooden Cutlery Set 4 in 1 (Case 250)

The perfect accompaniment for any meal, the wooden FSC-certified 4 in 1 meal cutlery pack can be used with a takeaway or for events. Made from FSC® 100% certified Birchwood.

Each pack Includes: a Knife, Fork and Spoon and Napkin. Sachet size: 207 x 60mm

**EG-2511**



### Birchwood Wooden Teaspoon (Pack 100)

Manufactured with FSC® 100% certified birchwood this tea spoon is ideal for stirring tea & coffee, and eating ice creams, yogurts and other sweet treats. High grade wood means fewer imperfections, colour variations and ensures a smooth, even finish. Size: 110mm

**EG-314E**



### Birchwood Wooden Fork (Pack 100)

Manufactured with FSC® 100% certified birchwood this fork is ideal for food to go products, and eating street food, take-away or salads. High grade wood means fewer imperfections, colour variations and ensures a smooth, even finish. Size: 155mm

**EG-312E**



### Birchwood Wooden Mini Spork (Pack 100)

For when you need a spoon and a fork! Make eating salads, pasta and seafood easier and more accessible for your customers with these Wooden Sporks. These 100% FSC approved and have been created from environmentally friendly birch wood and are fully biodegradable and disposable. Size: 124mm

**EG-3149**



### Birchwood Wooden Chip Forks (Pack 1000)

These Birchwood Wooden Chip Forks are an environmentally-friendly, sustainable choice. Made from 100% biodegradable Birchwood. Perfect for take-away food, these eco-friendly forks can be used and disposed of guilt-free. They come in a dispensing box for ease.

Size: 95mm

**EG-308N**



### Birchwood Wooden Ice Cream Spades (Pack 100)

These Birchwood Wooden Chip Forks are an environmentally-friendly, sustainable choice. Made from 100% biodegradable Birchwood. Perfect for take-away food, these eco-friendly forks can be used and disposed of guilt-free.

Size: 95mm

**EG-307**



### Freshening Microwaveable Hand Wipes (Pack 500)

These large refreshing antibacterial lemon scented moist hand wipes are ideal for cleaning and refreshing hands after eating prawns or ribs or any finger foods. They can be microwaved and used hot or cold.

The small size of each packet makes these wipes ideal to be put in your takeaway bags or on your restaurant tables. Size: 60mm x 110mm

**EG-284B**



**Bagasse Food Boxes  
(Available in 3 Sizes)**

Bagasse Containers are Disposable, Compostable & Biodegradable, manufactured from 100% sugarcane fibre. Suitable for hot, wet and oily foods. Product Sizes see below:

- 6" = 145(L) x 145(D) x 75 (H)mm
- 9" = 235 (L) x 230 (D) x 75(H)mm
- 9" x 6" = 230(L) x 160 (D) x 75(H)mm

- DIS-91014 - 6" Burger - Pack 500**
- DIS-91015- 9" Clamshell - Pack 200**
- DIS-91018 - 9" x 6" Lunch - Pack 250**



**Kraft Food Containers  
(Available in 3 Sizes)**

Brown Kraft food cartons are leak and grease resistant, microwaveable, stackable, and are easy to use. Dispo-Pak will easily hold hot, cold, wet, or dry foods. Sizes & Capacities see below:

- No 1. = 26oz - 106(L) x 127(D) x 65 (H)mm
- No 2. = 51oz - 155 (L) x 215 (D) x 48(H)mm
- No 8. = 46oz - 137 (L) x 170 (D) x 64(H)mm

- DIS-38007- No 1 - Pack 450**
- DIS-38008- No 2 - Pack 200**
- DIS-38012 - No 8 - Pack 300**



**Foil Lined Disposable Paper Bag 7x9x12" (Pack 500)**

These foil lined disposable paper bags are versatile and great for keeping food warm and moist. They are especially useful for takeaways for things like naan or other flatbreads, or for hot sandwiches, paninis, pasties, pies, and more. Size: (7 x 9 x 12" / 18 x 23 x 30.5cm)

**WP-FLB**



**Clear Sauce/Deli Pots & Lids (Pack 2000)**

Manufactured from premium food grade cup stock, single poly-coated Double Wall/Triple Layer Kraft Ripple Wrap Paper Cups in plain brown.

- DIS-15032 - 2oz - 71mm dia. x 20mm**
- DIS-15033 - 4oz - 71mm dia. x 40mm**



**Rectangular Microwave Containers & Lid (Pack 250)**

Premium microwave safe plastic containers with lids made from clear polypropylene. Rectangular in shape (173mm x 115mm) with a 500cc/ml capacity, ideal for take aways. Great for a portion of rice, chow mein etc Both the container and lid have the recycle logo, food grade, freezer and microwave safe logo moulded into them.

**WP-MC500**



**12" Plain Brown Pizza Boxes (Pack 100)**

These Brown Kraft Pizza Boxes are the perfect solution for pizzerias, takeaways, and food vendors looking for a strong, sustainable, and stylish packaging option. Made from high-quality kraft board, these boxes are both durable and 100% recyclable, offering an eco-friendly alternative to traditional packaging. Size: 305mm x 305mm x 44mm

**FF-FA966**



**Brown Kraft Paper Food Bags (Available in 3 Sizes)**

Eco-friendly and versatile paper food bags which are durable and sturdy enough to hold any type of food items, making them ideal for food on the go. These bags are 100% recyclable and compostable, making them an excellent choice. Sizes & Capacities see below:

- 88K - 8.5" x 8.5" / 215mm x 215mm
- 1010K - 10" X 10" / 250mm x 250mm
- 1212K - 12.5" X 12" / 315mm x 305mm

- WP-88K - 8.5" Size - Pack 1000**
- WP-1010K - 10" Size - Pack 1000**
- WP-1212K - 12" Size - Pack 500**



**Brown Kraft Paper Carrier Bags (Available in 3 Sizes)**

Brown Kraft Paper Carrier Bags for strong, eco-friendly packaging. These strong paper bags are great for takeaways, restaurants, grocery stores, and retail shops. They provide a reliable and eco-friendly choice instead of plastic. Sizes & Capacities see below:

- Small - 7" x 10.5" x 8.5"
- Medium - 8" x 13" x 10"
- Large - 10" x 12.5" x 5.5"

- WP-7108B - Small - Pack 250**
- WP-81310B - Medium - Pack 250**
- WP-101512B - Large - Pack 250**



**Kraft Salad Bowls & Lids (Available in 3 Sizes) Pack 300**

Brown Kraft Salad Bowls are perfect for Hot Food, Salads or Poke.

Sizes & Capacities see below:

- Small - 150mm dia x 45mm high
- Medium - 150mm dia x 59mm high
- Large - 168mm dia x 66mm high

- DIS-62001 - Small - 500ml capacity**
- DIS-62002- Medium - 750ml capacity**
- DIS-62000 - Large - 1090ml capacity**
- DIS-63006 - Lids for 500ml & 750ml**
- DIS-63007 - Lids for 1090ml**

# Need Crockery, Cutlery or Glassware? Don't panic - Just call LBK!

We work with the top commercial tableware suppliers, stocking extensive ranges to suit all trends and budgets



With such a vast range of commercial tableware on offer, listing every item would make this catalogue heavier than the tables you set!

From plates, bowls, and cutlery to glassware, serving dishes, and speciality items, we can supply it all – and more.

If you don't see exactly what you need, we can get it for you. Our team is always happy to help with product recommendations, bulk orders, and sourcing specific brands or styles.

Whether you're looking for:

## Glassware

- Everyday tumblers, hi-balls, and juice glasses
- Wine glasses, champagne flutes, and cocktail stemware
- Beer glasses, tankards, and speciality barware
- Carafes, jugs, and pitchers

## Crockery

- Classic whiteware for everyday service
- Contemporary stoneware and rustic collections
- Porcelite, vitrified hotelware, and fine bone china
- Bowls, plates, platters, ramekins, and serving dishes

## Cutlery

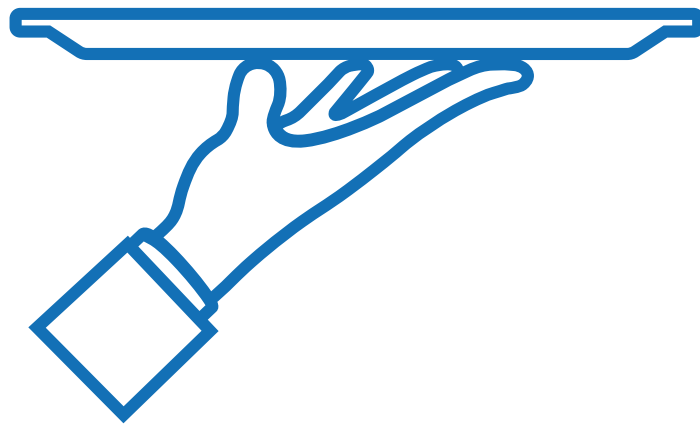
- 18/0 parish designs for practicality and value
- 18/10 premium stainless-steel ranges for superior finish and feel
- Steak knives, serving utensils, and buffet cutlery
- Specialist pieces for fine dining or banqueting service.



**Call us today** – we'll make sure you get the right tableware for your business, quickly and easily.

# BAR & FRONT OF HOUSE

---



## *Bar & Front of House*

---

- 56** Cocktail & Bar Accessories
- 58** Ice Buckets & Wine Coolers
- 59** Speed Rails, Pourers & Measures
- 60** Bar Knives, Boards & Mats
- 61** Front of House
- 63** Table Service



**Cocktail Mixing Glasses (Single)**

Vintage design mixing glass with a cut glass design effect. Thick and heavy glass perfect for all stirred cocktails. Easy to use pouring lip prevents spillages.

**NV-MXG500 - 50cl / 17.5oz**  
**NV-MXG800 - 80cl / 28.25oz**



**Copper Boston Shakers (Single)**

Attractive and stylish copper finish these looks great in cocktail venues. Suitable and easy to use for bar tenders with any level of cocktail making skills. Made from Copper Plating, Stainless Steel-304. The Large boston shaker can be used in conjunction with the matching small Boston shaker or glass.

**NV-BSC18C - Small - 51cl / 18oz**  
**NV-BSC22C - Large - 64cl / 22.5oz**



**Cocktail Shaker (Single)**

3 piece classic cobbler cocktail shaker more specialised for accomplished bar tenders. Great at chilling cocktails very fast and for good dilution. High quality stainless steel construction provides good resistance to staining and maintains an excellent finish.

**NV-6782-50 - 50cl / 17.5oz**



**Copper Jigger 25/50ml (Single)**

One product double sided great for multiple measures. 25ml and 50ml capacity measures filled to brim and features 15ml and 35ml internal increments. Controlled pouring with rolled edges which helps prevent spillages.

**NV-JIG2550C**



**Copper Fine Mesh Bar Strainer (Single)**

Great for removing smaller finer elements from your cocktails when straining. Conical bottom to direct the liquid straight into the vessel when straining. Classic vintage copper finish.

**NV-FMCS**



**Copper Premium Hawthorne Strainer (Single)**

Thicker spring with coil's more tightly compact against each other to remove more of the ice and fruit. Perfect for bar tenders that are not experienced at making cocktails regularly. Durable and hardwearing PVD copper coating on high quality stainless steel.

**NV-HAW2C**



**Copper Classic Bar Spoon 27cm (Single)**

Classic mixing spoon design with a Spiralled shaft for effortless stirring of cocktails. Flat disk on end to bruise delicate cocktail ingredients such as herbs. Durable and hardwearing PVD copper coating on high quality stainless steel. Size: 27cm

**NV-BS-C27C**



**Copper Plated Muddler 9" (Single)**

An essential cocktail-making tool with a wow factor, muddling on the bar in front of the customer shows care and attention – doing it with a beautiful, classically designed copper plated muddler adds some real theatre and a sense of indulgence.

**NV-MUD2C**



**Mexican Elbow Lemon/Lime Squeezer (Single)**

This stylish black fruit press is an effortless way to add a zesty flavour to your cocktail creations. Crafted from a durable zinc alloy, this tool is made to last. The heavy duty pin hinge mechanism is extremely effective and will continue to perform even after constant use.

**NV-MEX1**

**Cocktail Bar Kit - 11 pieces**

An essential 11 piece cocktail-making starter kit. This stainless steel kit includes: The kit contains Boston shaker cans in 2 sizes, classic bar spoon, jigger, 3 speed pourers, Hawthorne strainer, julep strainer, fine mesh strainer and a muddler.

**NV-CBK1**



**Cocktail Bar Kit - 17 pieces**

A standard cocktail-making kit. This stainless steel kit includes: 2x boston shaker, 2x boston glass, mexican elbow, ice shovel, 2x hawthorne strainer, fine strainer, julep strainer, bar spoon, bar knife, chopping board, cap bottle opener & plastic muddler.

**NV-CBK4**





### 3 Tier Stacked Glass Rimmer (Single)

Featuring 3 tiers, the rimmer allows you to apply lime, salt, and sugar with speed and ease. This helps with precise application of garnish, whilst providing efficient service. The fold away design allows the rimmer to be stored away when not in use

**BM-3597**



### S/S Bar Blade Flat Bottle Opener 7" (Single)

With a strong and durable stainless steel construction these bar blades are an essential tool for cutting foil and removing bottle caps. Dishwasher safe. Size: 190mm x 150mm x 2mm

**NV-227-01**



### Black Bar Caddy - 6 Section

The caddy is perfect for use in busy bars and it brings a splash of style to your bar top. The caddy has space for standard size cocktail napkins, straws, stirrers and still has compartments left for any other consumables you might need. Size 24 x 15 x 11cm

**NV-BC05-03**



### 5.5" Black Paper Cocktail / Sip Straws (Pack 250)

These black sip straws have a bore of 6mm. Made from natural cellulose paper sourced from responsibly managed forests and are FSC® certified. They are strong, and have an excellent dwell time, thanks to their 3-ply construction using 300-350gsm paper and can be recycled. Size: 140mm x 6mm bore,

**EG-391PAPERSIPBLFE**



### Garnish/Chef Tweezers (Single)

These tweezers can be used behind the bar to garnish a drink with a slice of lemon or lime, and in the kitchen to place delicate items like edible flowers on a plate to create a precise presentation that wows your guests.

Size: 30.2 x 3.8 x 1.4 cm

**NV-951430**



### Deluxe Waiters Friend Wood Handle (Single)

Its varnished wood finish offers a sophisticated, yet durable appearance that is sure to impress guests. The waiters friend is designed with a two-step cork screw opener easily opens wine bottles, while its retractable foil cutter quickly removes pesky seals.

**NV-WDWF**



### Straw Dispenser for 8" straws

Introduce a touch of style to your bar, café or restaurant with this straw dispenser. With a plastic tube body and a stainless steel top and bottom, helping to keep your paper straws clean and dry in a busy bar environment.

Size 8.5 x 27cm

**NV-99011**



### 8" Black Paper Drinking Straws (Pack 250)

These black paper drinking straws have a bore of 6mm. Made from natural cellulose paper sourced from responsibly managed forests and are FSC® certified. They are strong, and have an excellent dwell time, thanks to their 3-ply construction using 300-350gsm paper and can be recycled. Size: 200mm x 6mm bore.

**EG-398BLPAPERFE**



### Spirit Poured Dust Cover (Pack 12)

Keep your bottles protected from dirt, dust, and flies at all times with these spirit pourer dust caps. Designed to effortlessly slide over the narrow tapor pourer of your bottles, the caps prevents fruit flies from infiltrating your bottles.

**BM-3061**



### Crown Cap Bottle Opener (Single)

Combining simplicity with a functional construction. Designed for occasional use, the bottle opener features a punctured hole that allows you to attach it to a keyring for quick and easy access.

**NV-C0107**



### Champagne Bottle Sealer (Single)

The Stainless Steel Champagne Stopper means your celebrations never have to end! With an airtight seal all thanks to a clamp.

**NV-CBS1**



### Wooden Cocktail Sticks (Pack 1000)

Wooden cocktail sticks are the perfect companion for all manner of cocktail garnish. Whether skewering olives for a martini or cherries for a Manhattan, they are an essential tool for creating visually appealing and enjoyable drinks.

**BM-3316**



### Paper Parasols Mixed Colours (Pack 144)

These mixed-coloured paper parasols offers exceptional value, making it a perfect choice to add a touch of flair to their presentation. These vibrant paper umbrellas are not only ideal for garnishing cocktails and summer drinks but also for giving your desserts that finishing touch.

**BM-3315**



### Insulated St/St Ice Bucket & Tong 1.2L

An essential for any bar, the double walled ice bucket from ensures you'll never misplace your pair of tongs again as they sit inside the lid! With a polished stainless steel finish and double wall design, this bucket will help your ice cubes stay frozen.

**NV-ICBKT**



### Aluminium Bar Ice Scoop 6" (12oz) (Single)

Crafted from high-quality aluminium, this ice scoop is durable, lightweight, and easy to use. Its 12-ounce capacity allows for efficient handling of ice, making it ideal for filling glasses, buckets, or ice bins with ease.

**NV-202-6**



### S/S Ice Tongs 17.8cm (Single)

Made of strong and durable stainless steel and with extra large serrations and lengthened jaws capable of picking up multiple cubes at once, these tongs make picking up ice easy. Size: 178mm

**NV-62503**



### S/S Satin Double Wall Wine Cooler

Helping to keep your pre-chilled bottle cooler for longer, while preventing condensation marks on your table top this cooler is ideal for your bottle of wine or champagne. With a double-walled stainless steel construction with a brushed finish. Size: 20 x 12cm

**NV-003**



### S/S Champagne Bowl 13 Ltr

Keep your wine and champagne bottles perfectly chilled with this polished stainless steel champagne bowl. When filled with ice, the bowl efficiently brings room temperature bottles to the ideal serving temperature. Size: 21.5h x 38cm

**NV-CHBWL**



### Clear Acrylic Champagne Bucket 7Ltr

A clear plastic champagne bucket, ideal for presenting and chilling wine or champagne on ice. Made from a crystal clear acrylic creating clear visuals of the champagne bottles and ice. Designed to work with a single bottle for table service but can be used with up to three bottles. Size: 34.6cm x 26.5 x 26cm

**NV-PCB-L**



### S/S Swirl Champagne Bucket 4.6Ltr

Helping to keep your pre-chilled bottle cooler for longer, while preventing condensation marks on your table top this cooler is ideal for your bottle of wine or champagne. With a swirl pattern and ring handles. Size: 20 x 21cm

**NV-26203SW**



### Wine Bucket with Detailed Ring Handles 5 Ltr

This beautiful wine bucket helps to quickly cool and present wine and champagne at the table. An aluminium cooler with detailed ring handles and can be used in conjunction with a stand. Size: 19.5cm x 21.6 cm

**NV-14N**



### S/S Wine Bucket Stand (Satin)

Helping to keep your pre-chilled bottle cooler for longer, while preventing condensation marks on your table top this cooler is ideal for your bottle of wine or champagne. With a swirl pattern and ring handles. Size: 20 x 21cm

**NV-695018**



### Vacu Vin Wine Pump (including 2 Stoppers)

This pump removes air from the bottle, slowing down the oxidation process and keeping the wine fresh for longer. It's easy to use and comes with a sealer that fits most wine bottles.

**BM-8121**



### Vacu Vin Sealers (Pack 2)

The stoppers are also reusable, allowing you to re-seal your opened wines time and time again, reducing wastage in your establishment to save you money on frequent replacement bottles.

**BM-8405**



**S/S Pourers Medium Flow (Pack 12)**

The Medium Flow Speed Pourer has a chrome plated spout and for steady, controlled pours.

**NV-WPM85**



**S/S Pourers Medium Flow (Pack 12)**

The Medium Flow Speed Pourer has a copper plated spout and for steady, controlled pours.

**NV-WPM85C**



**Spirit Pourer Dust Cover (Pack 12)**






Keep your bottles protected from dirt, dust, and flies at all times with these spirit pourer dust caps. Designed to effortlessly slide over the narrow tapor pourer of your bottles, the caps prevents fruit flies from infiltrating your bottles.

**BM-3061**



**Professional Save & Pour Bottles - 1 Ltr**

These bottles feature a narrow spout that ensures a smooth and continuous pour every time. Capable of holding 946ml of liquid, the bottle is ideal for pouring large or multiple drinks at from a single fill. The colour-coded design allows for easy identification and dietary separation, helping you to reduce the risk of cross contamination. Size: 8.9 x 33.4 cm.

-  **NV-PS601N-09 - Green**
-  **NV-PS601N-02 - Clear**
-  **NV-PS601N-04 - Yellow**
-  **NV-PS601N-05 - Red**
-  **NV-PS601N-24 - Orange**



**S/S Speed Rails - 2 Sizes**

Make it easy to organise the back of your bar, with a speed rail. Able to house multiple bottles and make it easy for your staff to find the drinks that they need straight to hand. Wall-mountable, the rail can be placed in any free wall space at the back of your bar - reducing clutter on your countertops. Made from stainless-steel material, the speed rail has excellent durability and style. Size: 8.9 x 33.4 cm.

**NV-SR22-06 - 6 bottles - 55 x 10 x 16cm**

**NV-SR32-08 - 8 bottles - 80 x 10 x 16cm**



**S/S Garnish-Condiment Holders - 3 Sizes**

Great for keeping your garnishes and fruits organised and at arms reach, this stainless steel condiment holder is a crucial piece of bar equipment. The 4/5/6 part condiment holder allows you to stock up before service staying highly organised. Clear hinged lid to help see contents in the compartments clearly and quickly. See sizes and options below.

**NV-014-4 - 4 Inserts - 29.5 x 14 x 9cm**

**NV-014-5 - 5 Inserts - 37 x 14 x 9cm**

**NV-014-6 - 6 Inserts - 44.3 x 14 x 9cm**

**NV-014 - Spare Insert - 13.9 x 7.3 x 7.2cm**



**Spirit Thimble Measures CE Marked (Single)**

Using measures ensures that each spirit pour is exactly as intended, reducing waste and providing guests with their money's worth. The thimble measures are also CE-marked for industry-standard serving sizes – making it easy for you to follow government regulation.

- DP-THIM25 - 25ml Measure**
- DP-THIM35.5 - 35ml Measure**
- DP-THIM50 - 50ml Measure**



**Wine by Glass Measures CE Marked (Single)**

Using measures ensures that each wine pour is exactly as intended, reducing waste and providing guests with their money's worth. The thimble measures are also CE-marked for industry-standard serving sizes – making it easy for you to follow government regulation.

- DP-THIM125 - 125ml Measure**
- DP-THIM175 - 175ml Measure**
- DP-THIM250 - 250ml Measure**



**Spirit / Optic Measure CE Marked (Single)**

The precise measurement allows you to accurately dispense spirits and create beautifully crafted beverages. High quality finned corks ensure a tight fit around the neck of the bottle to keep your spirits secure, whilst preventing any dripping and helping to save you money on wasted spirits, and keeping your bar free of mess. Government stamped for use in the UK with the prescribed spirits – whisky, gin, vodka and rum.

- BM-3103 - 25ml Measure**
- BM-3066 - 35ml Measure**
- BM-3104 - 50ml Measure**



**Deluxe Black Rubber Mini Bar Mat 150 x 300mm**

Keep your bar presentable with this mini rubber bar mat. Designed for use as a drinks preparation mat for bartenders, the mat has been well constructed for efficient drainage – to keep your bar dry and presentable. Made from rubber, the mat is easy to clean. Therefore, keeping your bar hygienic and free from spills. Size: 59.5 x 8cm

**NV-10600-03**



**Black Rubber Service Bar Mat 430 x 300mm**

Keep your bar area neat and tidy. Simply place on top of the bar to serve beverages, allowing any beer overflow or condensation from the outside of the glass to gather within the rubber prongs and not escape. After your shift, wash the bar mat in hot, soapy water and let it dry completely before using it again.

Size: 43 x 30cm

**NV-10601-03**



**White Bar Chopping Board 250 x 150mm**

Made from heavy duty plastic, this chopping board is durable and easy to clean. Essential for chopping fruit, preparing ingredients for cocktails and other garnishes, the board provides a sturdy surface that protects the bar underneath.

Therefore, making it a bartender's best friend. Size: 25.4 x 15.2 x 1.3

**NV-156**



**8 Section Lemon & Lime Wedger**

Perfect for establishments where consistency is key, the wedger is incredibly simple to use. There are eight durable stainless steel blades, to produce eight equal slices of lemon. These are the perfect size for fitting in bottle necks, as a perfect addition to a refreshing lemonade or beer. Size: 19.8 x 20.2 x 18.8cm

**BM-3659**



**Chrome Plated Heavy Duty Ice Crusher**

This manual ice crusher will do the hard work for you – it's designed with a wide opening at the top so you can easily pour your ice cubes in. After that, simply turn the handle and your crushed ice will be dispensed into the plastic ice catcher below. The tray keeps the ice together neatly, until you're ready to heap it into your chilled drinks. Size: 16.1 x 13.8 x 26.4cm

**BM-3302**



**Nutmeg Grater (Single)**

Grating fresh nutmeg onto a cocktail like an Alexander allows you to add just a little fresh nutmeg which adds theatre to the act of garnishing the cocktail. Not only will ground nutmeg improve the flavour of your cocktail, it will also mean you can use less. Size: 5 x 2.7 x 13.8cm

**BM-3669**



**14" Round Black Non-Slip Tray**

This tray allows staff to safely carry large quantities of food and drink, thanks to the 14" diameter. The black colour is also universal and hides any spills well until the tray can be cleaned. The anti-slip service means this tray stops crockery and glassware from sliding, even when wet.

Size: 36cm (14") diameter

**NV-GG1400BLK**



**Quash Glass Pre-Wash Lipstick Remover Intro Pack**

The Quash System is a pre-wash removal for grease marks and lipstick from the lip area of all types of glassware. Its safe, non-hazardous, simple and hygienic to use. Perfect for bars, cafes and restaurants, this Quash lipstick remover pack includes two bottles of Quash Concentrate, four sponges, an applicator and a measuring cup.

**UR-FU934**



**Quash Lip Stick Remover Refill Pack**

This is a Quash Lipstick remover refill pack includes: 2 x 1ltr of Quash concentrate, 4 x refill sponges and 1 measuring cup. The lipstick remover prevents lipstick marks on glassware, as well as other grease marks and stains that can effect the overall quality of items.

**UR-GD009**



**Bartenders Knife (Single)**

Made from high-quality stainless steel, its serrated sharp edge is perfect for slicing citrus fruits, herbs and tougher items like pineapples or melons. Size: 20.6cm

**BM-3695**



**Zester & Canalle Cutter (Single)**

This handy tool creates fine lines from the zest of a lemon or lime to be used when garnishing cocktails. It is made from stainless steel with a strong plastic handle for comfortable use. Size: 15.4 x 2.7cm

**BM-3674**



### Single Sheet Order Pad (20 Pack)

For servers who like ultimate note taking freedom, this one-ply, white order pad leaves plenty of room for orders, special requests & allergies. Numbered 1-100. Colour: White. Size: 76mm x 140mm

**NC-PAD-24-SP**



### Duplicate Carbon Restaurant Pads (20 Pk)

For servers who like ultimate note taking freedom, this two-ply carbon, you can easily separate a copy for the kitchen. white order pad leaves plenty of room for orders, special requests & allergies. Numbered 1-50. Server Numbers 1-5. Colour: Assorted colours. Size: 76mm x 140mm

**NC-PAD-15-SP**



### Thermal Till Rolls 80mm x 83m (Pack 20)

Enhance your POS system with these Thermal Till Rolls. Measuring 80x83mm, this pack of 20 ensures fast, high-quality printing for seamless customer service. Size: 80mm x 83m.

**NC-NTR8083-20**



### Credit Card Till Rolls 57mm x 40mm (Pack 20)

This high-quality credit card till roll is made with BPA-Free paper and primarily used in portable chip and pin devices. White Paper for credit card printer. Size: 57mm x 40mm.

**NC-7225-40-20**



### Multi-Ply Paper Till Rolls 76mm x 76mm (Pack 20)

This multi-ply bond roll is made with high-quality fiber and features a white first ply and a canary duplicate. This roll type is primarily used in kitchen printers. Size: 76mm x 76mm.

**NC-2300-20**



### 4 Hour Tealights (Pk 100) & 8 Hour Tealights (Pk 50)

Each of the tea lights in this pack has an incredible 4 or 8 hour burn time, allowing you to create a more picturesque, ambient setting for longer. Plus, the 40mm diameter means that the wax tea lights can also be stored in most tea light holders and food warmers.

**QC - TEALIGHT4 - Pack 100**

**QC - TEALIGHT8 - Pack 50**



### 42hr Burn Cream Pillar Candles (Pack 20)

These high-quality pillar candles have a traditional ivory colourway and are guaranteed to delivery a full, even burn without dripping. Clean burning with cotton wick ensures no afterglow, smoke or odour, burning for up to 42 hours.

Size: 150mm x 60mm

**QC-60-150**



### 90hr Burn Cream Pillar Candles (Pack 20)

These high-quality pillar candles have a traditional ivory colourway and are guaranteed to delivery a full, even burn without dripping. Clean burning with cotton wick ensures no afterglow, smoke or odour, burning for up to 90 hours. Size: 200mm x 80mm

**QC - 80-200**



### 10" Taper Candles (Pack 50)

Professional 10 Inch Taper Candles with a 7 hour burn time. These white / ivory tapered dinner candles are ideal for table settings and front-of-house use in restaurants, catering & hospitality. Size: 240mm x 23mm dia.

**QC-066-50-01 - White**

**QC-066-50-50 - Ivory**



### 6.5" Cheque Spindle Chrome Plated

Ensure secure storage of receipts throughout a busy service with this cheque spindle. Purpose designed, the spindle ensures cheques remain organised and in one place – making cashing up easy. Size: 16.2cm x 8.6cm.

**BM-3661CHR**



### Chrome Plated Service Bell

This front-of-house service bell is a fantastic way to draw attention. Whether it's a plate of food on the pass, or waiting guests in your reception area, the bell provides a loud, clear ring which can't be missed. Size: 60 x 85 x 85cm.

**NV-SB35**

# Table Lamps

## LED, Cordless & Rechargeable

When the right ambience is key - cordless indoor table lamps!



### Tempo Contemporary Table Lamp 29cm (Single)

The LED Cordless Tempo Table Lamps will add a touch of contemporary and aesthetic sophistication in any setting, perfect for restaurants and hotels. Touch control with 4 colour temperature settings. 3 levels of brightness. With a 30-minute auto-off timer. Complete with USB cable (adapter included). Qi Wireless charging compatibility. 1 Year warranty. Usable period: 8-30 hours (depending on lighting level required).

Power: 3 watts.

Battery size 5200mAh.

Recharge time: 7-8 hours

Size: 29cm / 11.5"

 **DP-603002B - Brown**

 **DP - 603002G - Grey**



### Classic Table Lamp 31cm (Single)

The Classic collection adopts a classic design while incorporating modern functionality, perfect for restaurants and hotels.. Touch control with 3 colour temperature settings. Dimmable brightness setting. Complete with USB cable. 1 Year warranty.

Usable period: 5-20 hours (depending on lighting level required).

Power: 3 watts.

Battery size 1800mAh.

Recharge time: 3-4hours

Size: 31cm / 12.25"

 **DP-423316R - Brown**

 **DP - 423316B - Bronze**



### Timeless Table Lamp 19.5cm (Single)

The LED Cordless Timeless Table Lamps will elevate the ambience to your table setting, perfect for restaurants and hotels. Touch control with 4 colour temperature settings. 3 levels of brightness. Complete with USB cable (adapter not included). 1 Year warranty.

Usable period: 5-20 hours (depending on lighting level required).

Power: 2 watts.

Battery size 1800mAh.

Recharge time: 3-4 hours

Size: 19.5cm / 7.7"

 **DP-303001B - Bronze**

 **DP - 303001G - Brassy**



### Dome Table Lamp 22cm (Single)

The curved LED Cordless Dome Table Lamps will elevate the ambience in any setting, perfect for restaurants and hotels. Touch control with 4 colour temperature settings. 3 levels of brightness. Complete with USB cable (adapter not included). Qi Wireless charging compatibility. 1 Year warranty.

Usable period: 10 - 50 hours (depending on lighting level required).

Power: 2 watts.

Battery size 5200mAh.

Recharge time: 7-8 hours

Size: 22cm / 8.5"

 **DP-743001G - Brassy**

 **DP - 743001S - Steel**

 **DP - 743001B - Bronze**



### Glass Lighthouse Condiments (Single)

Crafted from premium glass, this shaker brings durability and transparency to your table, allowing you to easily monitor the levels of salt and pepper inside. With a 1.3oz capacity. Size: 4.5 x 11.5cm

**NV-KC001 - Salt**

**NV-KC002 - Pepper**



### Glass Vinegar Dispenser (Single)

Designed for storing and serving vinegar. It is a simple and functional design. The vinegar pot is made from glass and s/s top, it can withstand the general wear and tear and movement that is expected on a busy tabletop.

With a 6oz capacity. Size: 5.5 x 14.5cm

**NV-KC600**



### Glass Oil Dispenser (Single)

Crafted from premium glass, this shaker brings durability and transparency to your table, allowing you to easily monitor the levels of salt and pepper inside. With a 6oz capacity. Size: 4.8 x 19cm

**NV-GVB18**



### 6" Acrylic Pepper Grinder & Salt Shaker Set

Crafted from high-quality acrylic, providing a sleek and modern look. Matching set combining a pepper grinder and a classic salt shaker for a coordinated tabletop. Easily customise the coarseness of the salt & pepper.

Size: 15.24cm(h)

**NV-9103 - Salt & Pepper**



### Acrylic Salt & Pepper Grinder (Single)

These grinders exudes a natural charm, crafted with precision from high grade acrylic and a metal top. Suitable for grinding peppercorns and salt crystals. Comes complete with engraved knobs denoting 'S' for salt and 'P' for pepper. Size: 14cm

**NV-SPGRC14C - Copper**

**NV-SPGRC14GM - Gun Metal**



### Rubber Wood Grinder (Single)

Perfect for enhancing your dining experience. Crafted from durable rubber wood with an adjustable ceramic mechanism, it allows for fine or coarse grinding. They feature engraved knobs for easy identification of salt and pepper. Size: 13cm

**NV-SPWD13L - Light Wood**

**NV-SPWD13 - Dark Wood**



### Dark Wood Pepper Mills - 3 Sizes (Single)

Crafted from high-quality rubberwood, offering a natural yet theatrical feel with a range of sizes, so why not offer freshly ground pepper at the table. Built to last, the ceramic grinding mechanism is suitable for peppercorns, ensuring consistent performance and resisting corrosion.

**NV-57030 - Size: 6 x 24cm**

**NV-1219 - Size: 7 x 32cm**

**NV-57037 - Size: 7.3 x 44.5cm**



### Galvanised Steel Table Caddy (Single)

A galvanised steel rectangular table caddy with a rustic aesthetic and an easy to carry wooden handle. Please note that galvanised steel is not food safe and should always be lined with greaseproof paper if used for food presentation. Size: 24.5 x 15.5 x 12.5cm

**NV-GSTC2415 - Plain Metal**

**NV-GSTC2415DL - Dark Olive**

**NV-GSHTC2415C - Antique Copper**



### Medium Wooden Table Caddy - 3 Colours

Perfect for injecting some rustic charm into your table settings, this wooden table caddy features an on trend natural or distressed finish. Ideal for achieving that on trend gastro pub aesthetic, this condiment caddy stores and carries sauces with ease. Size: 20 x 15.4 x 18cm

**NV-DWTC-M - Natural Finish**

**NV-DWTC-MW - White Wash**

**NV-DWTC-MBK - Black Wash**



### Large Rustic Wooden Table Caddy (Single)

Traditional design rustic wood table caddy finished in Acacia, ideal for storing sauces, condiments and oils on tables. Features two separate compartments so that condiments can be sectioned from other table accessories. Size: 24.5 x 16.5 x 18cm

**NV-RWTC**



### A5 Wooden Menu Clipboards (Singles) - 3 Colours

Present your menus and displays with these on trend A5 wooden menu Clipboards. These menu clip boards are the perfect way to inject a rustic on trend aesthetic into your establishment. Wipe clean only.  
Size: 24.5 x 18.5cm.

**NV-WMC17 - Natural Finish**  
**NV-WMC17W - White Wash**  
**NV-WMC17BK - Black Wash**



### A4 Wooden Menu Clipboards (Singles) - 3 Colours

Present your menus and displays with these on trend A4 wooden menu Clipboards. These menu clip boards are the perfect way to inject a rustic on trend aesthetic into your establishment. Wipe clean only.  
Size: 32 x 24cm.

**NV-WMC24 - Natural Finish**  
**NV-WMC24W - White Wash**  
**NV-WMC24BK - Black Wash**



### A5 American Style Clear Menu Holder (Single)

A practical and transparent solution for presenting A5 menus. Made from high-quality, transparent material, this menu holder offers a versatile design. Suitable for displaying a single page(double sided).

**NV-MHAM5 - 2 Pages Facing**



### A4 American Style Clear Menu Holder (Single or Double)

A practical and transparent solution for presenting A4 menus. Made from high-quality, transparent material, this menu holder offers a versatile design. Suitable for displaying a single page(double sided) or a double page layout displaying 4 facing pages.

**NV-MHAM2 - 2 Pages Facing**  
**NV-MHAM4 - 4 Pages Facing**



### A4 Contemporary Polypropylene Menu Holder (Single)

A practical and transparent solution for presenting A5 menus. Made from high-quality, transparent material, this menu holder offers a versatile design. Suitable for displaying a single page(double sided).

**NV-MC-RCA4-BL- 4 Pages Facing**



### A5/A4 Basic Menu Holder (Singles)

A simple menu holder with a basic design, featuring gold effect corners and elegant gold writing on the front. Made with a leather effect PU Material for a robust and scratch resistant product. Wipe clean only.

A5 Size- 8 Sides (4 pages) - 210 x 148mm  
A4 Size - 8 Sides (4 pages) - 235 x 315mm

**NV-MC-BRA5-BL - A5 Black**  
**NV-MC-BRA4-BL - A4 Black**  
**NV-MC-BRA4-WR - A4 Wine Red**



### Classic Bill Presenter (Single)

A classic bill presented with a double stitched cover and gold effect corners. Features a leather look but made from a robust polythene, which is highly scratch resistant. Size: 23 x 13cm

**NV-MC-CRBP-BL**



### A4 Table Chalkboard with stand (Single)

A simple and easy to use mini chalkboard, ideal for communicating prices, table numbers, messages, menus or special information and promotions. Size: 21 x 33.5cm.

**NV-FBT-CARRY**



### Mini Chalkboard Easel Sets (Pack 3)

These little boards allow you to create a small point of sale display or quirky table top specials board. When used with a liquid chalk pen. Easy to clean and weather-resistant. Size: 15 x 24cm

**NV-MNI-B-KR - Wood Easel**  
**NV-MNI-BL-KR - Black Easel**



### Chalk Pens - White or Colour (Pack 5)

These liquid chalk pens are quick and make chalkboard artwork easy, perfect for specials boards and outdoor A-frames. With the 5mm nib it allows you to do fine line work too.

**BM-3564 - White (Pack 5)**  
**BM-3565 - Colour (Pack 5)**



### A5/A4 Teal or Black Table Chalkboards (Single)

Attractive Black and Teak display boards for tables, bar tops or shelves. Ideal For Communicating Messages, Menus or special Information and promotions. Double sided synthetic non-porous surface For writing on with liquid chalk markers.

A5 Size - 15 x 21cm

A4 Size - 21 x 30cm

**NV-ELE-BL-ME - A5 Black**  
**NV-ELE-BL-LA - A4 Black**  
**NV-ELE-TE-ME - A5 Teak**  
**NV-ELE-TE-LA - A4 Teak**

# KITCHEN SUPPLIES

---



## *Kitchen Supplies*

---

- 66** Kitchen Consumables
- 68** Knives, Utensils & Boards
- 74** Sauce Bottles & Food Storage
- 75** Safety & First Aid



### Cling Film Cutterbox (450mm x 300m)

Superior cling, stretch and strength. Use to reduce food waste and improve shelf life. Preserves food and protects flavour. The carton and the core are recyclable. This roll of cling film measures 45cm wide and 300 meters length.

**CF-32C09 - Single**



### Aluminium Foil Cutterbox (450mm x 75m)

The perfect solution for caterers and chefs, who need strong, high-performance kitchen foil every day. Ideal for cooking, baking, grilling, and food storage, this 45cm wide aluminium foil fits standard trays and containers, helping you keep food fresh, retain heat, and reduce mess.

**CF-23C05 - Single**



### Baking Parchment Cutterbox (450mm x 50m)

This premium 45cm x 50m roll features dual-sided silicone coating, eliminating greasing requirements while ensuring perfect release every time. Heat-resistant to 220°C, it excels in diverse applications from delicate pastry work to roasting.

**CF-21C27 - Single**



### Wrapmaster Cling Film (PVC) Refills 30cm (Pack 3)

Wrapmaster's Premium cling film with high cling, stretch and strength. Suitable for covering and wrapping all food, except pure fats and oils. Can be used in the fridge, freezer and microwave. For use in the 3000 dispenser. Refills Size: 30cm x 300m.

**CF-31C80 - Pack of 3**



### Wrapmaster Foil Refills 30cm (Pack 3)

Line trays or wrap food quickly and easily with this Wrapmaster aluminium foil. The 300mm foil width offers plenty of coverage for large pans or dishes, while each pack contains three 90m rolls. For use in the 3000 dispenser.

**CF-24C54 - Pack of 3**



### Wrapmaster Parchment Refills 30cm (Pack 3)

The baking parchment is coated on both sides with silicone, providing a non-stick surface that is heat resistant up to 220°C for 20 minutes and can also be used in the freezer. For use in the 3000 dispenser. Refills Size: 30cm x 50m

**CF-21C31 - Pack of 3**



### Wrapmaster Cling Film (PVC) Refills 45cm (Pack 3)

Wrapmaster's Premium cling film with high cling, stretch and strength. Suitable for covering and wrapping all food, except pure fats and oils. Can be used in the fridge, freezer and microwave. For use in the 4500 & Duo dispensers. Refill 45cm x 300m. Pack of 3.

**CF-31C81 - Pack of 3**



### Wrapmaster Foil Refills 45cm (Pack 3)

Premium Aluminium Foil is perfect for the demands of any professional kitchen. Its versatility means it's suitable for lining, grilling and roasting. For use in the 4500 & Duo dispensers. Refill 45cm x 90m. Pack of 3.

**CF-24C55 - Pack of 3**



### Wrapmaster Parchment Refills 45cm (Pack 3)

The baking parchment is coated on both sides with silicone, providing a non-stick surface that is heat resistant up to 220°C for 20 minutes and can also be used in the freezer. For use in the 4500 & Duo dispensers. Refills Size: 45cm x 50m

**CF-21C32 - Pack of 3**



### Wrapmaster Dispensers

The Wrapmaster dispensers are the perfect choice for large kitchens using high volumes of foodservice film, foil or baking parchment. With a concealed blade for safe cutting. Easy to clean and sanitise during service with a dishwasher-safe lid and base.

**CF-63M98 - 3000 (30cm)**

**CF-63F97 - 4500 (45cm)**



### 19mm Removable Day of the Week Labels in dispensing box (7x1000)

A convenient plastic dispenser pre-loaded with labels. Includes 7 Day of the Week rolls, each containing 1,000 removable labels. Ideal for organising, labelling, and tracking.

**NV-C300-KIT**



### Removable Shelf Life Labels (Roll 500)

These high quality 50mm removable food rotation labels are easily removable, moisture resistant and safe for the fridge or freezer.

**NV-RSL24R**



### Allergen Food Labels 50 x 100mm (Roll 500)

This 50mm label helps call attention to potential allergens in an efficient way while sharing important date and use-by information.

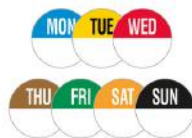
**NC-RAPDU24R**



### Heavy Duty Single Roll Dispenser For 50mm Labels

The Heavy Duty 1 Roll 50mm Label Dispenser offers a truly organised way of labelling food. The dispenser's compact design ensures that it takes up minimal space, while it's sturdy base provides stability during use.

**NV-LL1R-2SP**



### 19mm Round Removable Day of the Week Labels

Keep track of what day of the week product was delivered or should be used with these handy day-of-the-week removable labels. Each label measures 19mm. 1000 stickers per roll/day. Sold in singular days.

- NC-C301R - Sunday**
- NC-C302R - Monday**
- NC-C303R - Tuesday**
- NC-C304R - Wednesday**
- NC-C305R - Thursday**
- NC-C306R - Friday**
- NC-C307R - Saturday**



### Removable Prepped Food Rotation Labels (Roll 500)

These 49mm labels share helpful "use-by" data. Removable, but durable, adhesive make these a smart addition for every kitchen.

**NC-RRIDU23R**



### Heavy Duty Label Dispenser For 19mm Labels

The Heavy Duty 7 Roll 19mm Label Dispenser offers a truly organised way of labelling food, with 7 slots and can fit labels 19mm - 25mm. Also wall mountable to keep your countertops clear.

**NV-LL7R-JR**



### 50mm Square Removable Day of the Week Labels

These 50mm removable labels help keep prepped food organised with important information such as item, date and use-by data. Each label measures 50 mm. 500 stickers per roll/day. Sold in singular days.

- NC-RIDU2207R - Sunday**
- NC-RIDU2201R - Monday**
- NC-RIDU2202R - Tuesday**
- NC-RIDU2203R - Wednesday**
- NC-RIDU2204R - Thursday**
- NC-RIDU2205R - Friday**
- NC-RIDU2206R - Saturday**



### 50mm Removable Use First Red Labels (Roll 500)

These 50mm removable use first Red round labels are a simple and affordable solution for labelling food, which reduces the chance of food spoiling.

**NV-RUF2R**



### Heavy Duty Label Dispenser For 50mm Labels

The Heavy Duty 7 Roll 50mm Label Dispenser offers a truly organised way of labelling food, with 7 slots and can fit 50mm labels. Also wall mountable to keep your countertops clear.

**NV-LL7R-2**

### Blue Disposable Piping Bags (Pack 100)

Our Disposable Blue Piping Bags are tough-wearing and anti-slip, and allow you to consistently achieve excellent results every time. Ideal for fast-paced bakeries and restaurants. A non-slip exterior makes the bag easy to use even while wearing gloves.

**NC-FI-21TOB - 53cm**





### 4" Black Serrated Tomato Knife (Single)

This knife features a razor sharp serrated edge that grips and slices through tomatoes without squashing or unwanted tearing, reducing food waste and mess.

**NV-K-T4SER**



### 4" Black Paring Knife (Single)

This paring knife features a straight, medium-sized blade that is ideal for chopping fruit or vegetables, to fine herbs or garnishes. The blade is designed with a sharp, robust edge that provides professional results.

**NV-K-P4**



### 4" Colour-Coded Vegetable Knife (Single)

This vegetable knife has a razor sharp steel molybdenum blade which will gently slice through the food with ease, and a soft grip nylon handle with an ergonomic shape for comfort.

- NV-K-V4 - Black**
- NV-K-V4BL - Blue**
- NV-K-V4BR - Brown**
- NV-K-V4G - Green**
- NV-K-V4R - Red**



### 6" Oval Diamond Steel (Single)

The Oval Diamond Sharpening Steel is traditionally used to rejuvenate blunt knives to a razor sharp blade with polypropylene handle and ergonomic shape for comfort

**NV-DST10**



### 6" Colour-Coded Chef Knife (Single)

With a colour-coded handle for quick identification. This 6" knife is made from stainless steel, the sturdy blade is highly durable, corrosion-resistant and easy to clean.

- NV-K-C6G- Green**
- NV-K-C6R - Red**
- NV-K-C6 - Black**
- NV-K-C6Y - Yellow**



### 8" Colour-Coded Chef Knife (Single)

Make light work of food preparation. Providing professional results with each cut, the 8" broad blade easily carves through the toughest of vegetables, fruits or meat.

- NV-K-C8G- Green**
- NV-K-C8R - Red**
- NV-K-C8 - Black**
- NV-K-C8Y - Yellow**
- NV-K-C6BL - Blue**
- NV-K-C8W - White**
- NV-K-C8P - Purple**
- NV-K-C8BR - Brown**



### 10" Colour-Coded Chef Knife (Single)

Make light work of food preparation. Providing professional results with each cut, the 10" broad blade easily carves through the toughest of vegetables, fruits or meat.

- NV-K-C10G- Green**
- NV-K-C10R - Red**
- NV-K-C10 - Black**
- NV-K-C10Y - Yellow**
- NV-K-C10BR - Brown**
- NV-K-C10W - White**



### 5" Colour-Coded Rigid Boning Knife (Single)

Take on tricky meat trimming tasks in complete comfort with this boning knife. Use it to effortlessly debone meat, trim fat or remove skin with ease.

- NV-K-BN5 - Black**
- NV-K-BN5R - Red**



### 6" Colour-Coded Flexible Filleting Knife (Single)

This Flexible Filleting Knife can be used to shape and cut fillets of poultry and fish. This is a great knife for use when preparing poultry and fish from scratch.

- NV-K-F6 - Black**
- NV-K-F6BL - Blue**



### 8" Colour-Coded Serrated Bread Knife (Single)

This Serrated Bread Knife is an essential knife in any kitchen and can be used to smoothly slice through freshly baked bread loaves.

- NV-K-BR8 - Black**
- NV-K-BR8W - White**



### 10" Serrated Slicing Knife (Single)

The Serrated Slicer is ideal for bread and vegetables such as celery and cabbage. This knife features a Molybdenum steel blade and ergonomic handle for comfort.

**NV-K-S10SER**



### 10" Serrated Universal / Pastry Knife (Single)

This Professional Serrated Universal Pastry Knife has a razor sharp molybdenum steel blade and is a versatile piece of kit.

**NV-K-U10SER**



### 8" Flexible Palette Knife (Single)

Thanks to its thin, flexible blade and rounded tip, this palette knife lends itself to a variety of kitchen tasks from spreading sandwich fillings and prizing baked goods

**NV-K-PT8 - Black**  
 **NV-K-PT8W - White**



### 7.5" Black Cranked Flexible Palette Knife (Single)

Apply a smooth finish to your icing, spread sandwich fillings with ease and cleanly remove baked goods from tins with the incredibly versatile palette knife

**NV-K-CPT8**



### Black Standard Peeler (Single)

Boasting an incredibly sharp double-sided blade, the utensil guarantees faster and more efficient peeling.

**NV-K-PEEL**



### OXO Y Speed Peeler (Single)

Peel ingredients with speed and precision. Made with a pressure-absorbing, anti-slip handle, the utensil ensures your safety and comfort when peeling - helping you to prepare large quantities of vegetables quickly.

**UR-P302**



### Melon Baller 25mm (Single)

Create perfectly shaped melon balls, the baller head quickly carves into all manner of ingredients, allowing you to obtain consistent 25mm spheres.

**UR-CF934**



### S/S Kitchen Scissors (Single)

The scissors are also heavy duty, making them highly durable and perfect for everyday use in commercial kitchens. Cut through ingredients and packaging with ease.

**NV-SCIS7 - Black Handles**  
**NV-SCIS7R - Red Handles**  
**NV-SCIS7BL - Blue Handles**



### 6" Carving Fork (Single)

Featuring black nylon handles for a comfortable grip, this fork is ideal for holding meats in place whilst being carved.

**NV-K-FK6**



### Apple Corer (Single)

Piercing apples has never been easier, a corer with a serrated edge, allowing apples to be cored quickly, efficiently.

**NV-APCR**



### Two Stage Knife Sharpener (Single)

The sharpener is a great alternative to a traditional sharpening steel and features a two stage process designed to rejuvenate blunt knives with a razor sharp blade. Note: Not suitable for serrated knives.

**NV-KS1**



### Garnish / Chef Tweezers 31cm (Single)

These tweezers can be used behind the bar to garnish a drink with a slice of lemon or lime, and in the kitchen to place delicate items like edible flowers on a plate to create a precise presentation that wows your guests. Size: 30.2 x 3.8 x 1.4 cm

**NV-951430**



### Heat Resistant Spoonulas - 3 Sizes (Single)

Ensure your pots, pans and tins remain in superb condition with this the heat resistant spoonula. Heat resistant silicon head up to 230°C and handle up to 120°C. With hanging hole.

**NV-SPULAHH-10 - 25.4CM/10"**

**NV-SPULAHH-14 - 35.6CM/14"**

**NV-SPULAHH-16 - 40.6CM/16"**



### Heat Resistant Spatulas - 3 Sizes (Single)

Ensure your pots, pans and tins remain in superb condition with this the heat resistant spatula. Heat resistant silicon head up to 230°C and handle up to 120°C. With hanging hole.

**NV-SPATHH-10 - 25.4CM/10"**

**NV-SPATHH-14 - 35.6CM/14"**

**NV-SPATHH-16 - 40.6CM/16"**



### 16" Matfer Bourget Balloon Whisk (Single)

Immensely sturdy and robust, the whisk's eight wires effortlessly power through all manner of ingredients to speed up your serving times. Heat resistant to 220°C (428°F) and Dishwasher-proof and made with sealed wires,

**UR-J754**



### 16" Heavy Duty S/S Balloon Whisk (Single)

Made with eight immensely strong heavy wires, the whisk makes whipping and beating tasks substantially easier, potentially shaving minutes off your prep times. The handle is also sealed, meaning liquid is prevented from entering the handle

**NV-HDW-60**



### 13" Slotted Turner (Single)

Made from a strong and durable 201 stainless steel these Plastic Handle Slotted Turners feature a hooked black handle. Capacity: 19.6cl/7oz. Colour-coded handle for easy identification. Dishwasher Safe.

**NV-577-02- Black**

**NV-577-02G - Green**



### 13" Serving Spoon (Single)

Made from a strong and durable 201 stainless steel these Plastic Handle Serving Spoon feature a hooked black handle. Capacity: 4.9cl/1.7oz. Colour-coded handle for easy identification. Dishwasher Safe.

**NV-577-04- Black**

**NV-577-04G - Green**



### 13" Slotted Serving Spoon (Single)

This Black Handled Serving Spoon will make all serving tasks easier. Perfect to use for hot buffets and serveries. Stainless steel provides good resistance and a comfortable, easy to grip plastic handle is perfect for regular use.

**NV-566-04BK**



### Colour-Coded Capacity Spoodles (Single)

Accurately control your portion sizes with the solid spoodle with colour-coded handles, also helping to minimise food waste. And once used, it's easy to clean and dishwasher safe. Perfect for busy commercial kitchens and service areas.

**NV-SPD2-S - Red - 5.9cl/2oz**

**NV-SPD3-S - White - 8.9cl/3oz**

**NV-SPD4-S - Green - 11.8cl/4oz**

**NV-SPD5-S - Yellow - 15cl/5oz**

**NV-SPD6-S - Black - 18cl/6oz**

**NV-SPD8-S - Blue - 23.7cl/8oz**



### 9.4" Colour-Coded Buffet Tongs (Single)

The tongs feature a perforated spoon and spiked fork that allows for foods, such as salad to be gathered with minimal effort. The tongs are designed with ergonomic, colour-coded handles for quick identification. Dishwasher Safe.

**NV-577-08- Black**

**NV-577-08G - Green**

**NV-577-08R- Red**

**NV-577-08W - White**

**NV-577-08Y - Yellow**



### 11.5" Slotted Chip Scoop (Single)

This chip scoop is made with a rimmed edge that helps to secure the most amount of fries per scoop. The perforated scoop allows oil to drain from the chips whilst securing bulkier items ready for serving..

**NV-566-04BK**



### Heavy Duty S/S Utility Tongs 2 Sizes (Single)

With a reliable spring-loaded opening mechanism and a handy locking system, the tongs effortlessly grip on to all manner of ingredients, helping you prepare, serve and turn food with ease, all whilst maintaining food hygiene.

**NV-579 - 9"/23cm**

**NV-582 - 12" / 30cm**



### S/S Griddle Scraper (Single)

Remove food and oil debris from your griddle with ease. With a thin, yet rigid scraping blade, this cleaning tool is able to quickly and accurately remove even the most stubborn of dirt or grime. This makes cleaning during or after service quick and easy. Blade Size: 7.5 x 11.5cm

**NV-05-199**



### 13" Soup Ladles (Single)

This ladle is designed with a large, 20cl/7oz serving bowl that makes portion control fast and efficient. The elongated stem allows you to stir soup from the bottom of the pot and aids in keeping your hands away from any hot liquids. Size: 34cm/13"

■ **NV-577-03- Black**

■ **NV-577-03G - Green**



### 14" Potato/Vegetable Masher (Single)

The potato masher is essential for smooth mashed potatoes, vegetables or fruits. The head is made of stainless steel, which is durable and rust resistant. The handle is well-balanced and ergonomically designed for comfort and smooth operation under heavy use.

**NV-1760**



### Turners - 2 Styles (Single)

Ergonomically shaped, this kitchen essential keeps delicate omelettes and crepes intact when turning, ensuring your presentation is always pristine.

Blade Size: 21 x 7.5cm

**NV-05-187 - Perforated Blade**

**NV-05-188 - Solid Blade**



### 12" Wooden Spoon (Single)

Made from Beech Wood and constructed with a soft edge, the spoon can be used safely with non-stick pots, pans and trays without damaging the surface, helping you keep your equipment in superb condition.

Incredibly versatile, the spoon can be used for everything from baking to frying,

**NV-WSPN-12**



### 13" Sauce Ladle (Single)

Serving a wide variety of sauces has never been easier, than with a sauce ladle. This ladle is designed to effortlessly portion servings with a 3.5cl/1.25oz bowl capacity. Directly ladle sauces from your cooking station onto the plate

**NV-577-07**



### Black Handled Can Opener (Single)

Quickly and easily open tins of ingredients with this hand can opener. Durable in design, the can opener features high-quality stainless steel wheels and blades for efficient operation.

Size: 18 x 5cm

**UR-CZ546**



### Hamburger Turner (Single)

Flip food quickly and safely with the burger turner. Ergonomically shaped, the utensil gives you complete control when flipping hamburgers and hot dogs, allowing you to prepare food with expert precision.

Blade size: 12.5 x 7cm

**NV-05-189**



### S/S Egg & Fish Slice (Single)

Designed with a large stainless steel head, the slice is ideal for sliding under fragile ingredients with precision, helping you to serve them without ripping or breaking. The large perforated head is also perfect for draining excess liquid. Size: 39.5cm.

**NV-6100**



### 4" Colour-Coded Pizza Wheels (Single)

Boasting a large and high quality stainless steel blade, the slicer effortlessly glides through deep pan pizzas to give you superb results in seconds - allowing for attractive presentation and easier consumption.

Blade Size: 4"/10cm.

■ **NV-05-996- Black**

■ **NV-05-996G - Green**

□ **NV-05-996W - White**

■ **NV-05-996R - Red**



### 11.5" Cake Server (Single)

Ergonomically designed, the server is both comfortable and stable in the hand, allowing you to quickly portion and serve cakes, pizza and pies with precision. Featuring a convenient hanging hook at the end of the handle. Size: 29cm/11.5"

**NV-577-06**



### Quick Fit Torch Head (Single)

Give your food a great finish in no time at all, with this high quality quick-fit torch head. Featuring auto ignition and a simple-to-attach design, the torch head is effortless to use, helping you easily caramelize desserts, brown pastries and skin peppers in no time at all.

**UR-L977**



### Kitchen Craft Butane Gas Lighter (Single)

Thanks to its long design, the butane lighter keeps hands far away from the open flame which reduces the risk of burn injuries during ignition. Refillable body just add extra butane. Capacity 0.25ltr. Size: 26.2 x 9 x 1.6cm

**FF-EC958**



### Frothing Thermometer

This thermometer is incredibly easy-to-use, helping you to effortlessly measure the temperature of milk with expert precision. Supplied with a S/S clip it can securely be fastened to the side of jugs. Range: 10 to 200c. Probe length: 12.5cm.

**NV-THERM-FR**



### Digital Timer (99m 59s)

Boasting a large screen display, the timer can be easily read from long distances - helping you prepare meals with accuracy and precision, even when getting on with other tasks. Featuring a magnetic back so it can be attached to kitchen surfaces. Size: 80 x 25 x 80mm

**NV-TMR**



### Butane & Propane Mixture Gas Canister R4 (Single)

With 125g of butane, there's plenty of fuel for most needs, whilst the addition of eight adaptors ensures splutter-free connection to most refillable gas products. The butane burns with a simple clear, odour-free blue flame which doesn't transfer onto foods.

**UR-T271 - 125g**



### Digital Fridge/Freezer Thermometer (-50 to +70c)

Easily monitor the temperature of professional fridges, freezers and blast chillers with this digital fridge freezer thermometer. The Thermometer also allows you to set temperature alarms, immediately notifying you if temperatures get too high or low - potentially saving a huge amount of food waste. Size: 20.5 x 39.5 x 12cm.

**NV-910-9**



### Digital Scales 3kg/6kg/15kg - 3 Sizes

The user-friendly illuminated control panel makes it easy to measure ingredients quickly, so you can spend more time on prep, and less on weighing. And once you're done, the unit is incredibly easy to clean and features a time-saving wipe-clean fascia. Switchable between metric or imperial.

**NV-NACS03 - 3kg x 0.5g - Plate: 18x14.5cm**

**NV-NACS06 - 6kg x 1g - Plate: 23.5x17.5cm**

**NV-NACS15 - 15kg x 5g - Plate: 23.5 x 17.5cm**



### Butane & Propane Mixture Gas Canister A4 (Single)

Simple to fit, the canisters allow you to quickly brown cheeses or creme brulees. Offering up to 2 hours of use, each gas canister provides a portable and easily replaceable solution for powering your portable stoves or torch heads.

**UR-K980 - 220g**



### Folding Probe Pocket Thermometer (-50 to +300c)

This Folding Probe Pocket Thermometer is excellent for checking the temperature for food safety, which range from -50 to 300 C / -58 to 572 F.

Features a foldable probe for easy storage when not being used, colour coded versions that prevents cross-contamination. A wristband to ensure your safety when being carried.

Size: 33 x 21 x 32cm.

**NV-THERM-FLD - White**

**NV-THERM-FLDR - Red**

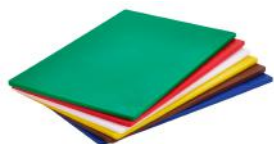
**NV-THERM-FLDY - Yellow**



### Infrared Thermometer (-32 to +550c)

This Infrared Thermometer allows you to easily and safely take temperature readings from a safe distance. Designed to measure surface temperature without the use of a probe preventing cross contamination. With a 0.5 second response time and a large LCD screen. Temperature range: -32 to 550C/-26 to 1022F. Size: 40 x 29 x 15cm.

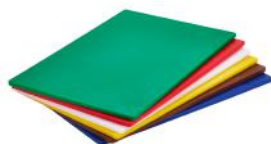
**NV-THERM-RED**



### 1/2" Low Density Colour-Coded Chopping Boards (Single)

Colour-coded low density polyethylene chopping boards, the boards are reliable and able to withstand the demands of any busy kitchen environment. Size: 45.7cm x 30.5cm x 1.2cm (0.5" thickness)

- **NV-G1812- Green**
- **NV-R1812 - Red**
- **NV-W1812 - White**
- **NV-Y1812 - Yellow**
- **NV-BR1812 - Brown**
- **NV-BL1812 - Blue**
- **NV-P1812 - Purple**



### 1" Low Density Colour-Coded Chopping Boards (Single)

Colour-coded low density polyethylene chopping boards, the boards are reliable and able to withstand the demands of any busy kitchen environment. Size: 45.7cm x 30.5cm x 2.5 cm (1" thickness)

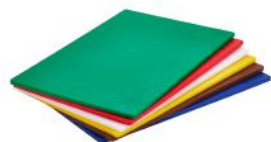
- **NV-G11812- Green**
- **NV-R11812 - Red**
- **NV-W11812 - White**
- **NV-Y11812 - Yellow**
- **NV-BR11812 - Brown**
- **NV-BL11812 - Blue**



### Colour-Coded Chopping Board Wall Chart (Single)

Designed to be used alongside colour-coded chopping boards, knives and other utensils, the poster reinforces the importance of food hygiene and will help reduce the risk of cross contamination. Size: 295 x 210mm

**UR-J249**



### 1/2" High Density Colour-Coded Chopping Boards (Single)

Colour-coded high density polyethylene chopping boards, the boards are reliable and able to withstand the demands of any busy kitchen environment. Size: 45.7cm x 30.5cm x 1.2cm (0.5" thickness)

- **NV-HD1812G- Green**
- **NV-HD1812R - Red**
- **NV-HD1812W - White**
- **NV-HD1812Y - Yellow**
- **NV-HD1812BR - Brown**
- **NV-HD1812BL - Blue**



### 1" High Density Colour-Coded Chopping Boards (Single)

Colour-coded high density polyethylene chopping boards, the boards are reliable and able to withstand the demands of any busy kitchen environment. Size: 45.7cm x 30.5cm x 2.5 cm (1" thickness)

- **NV-HD1824-19G- Green**
- **NV-HD1824-19R - Red**
- **NV-HD1824-19W- White**
- **NV-HD1824-19Y - Yellow**
- **NV-HD1824-19BR - Brown**
- **NV-HD1824-19BL - Blue**



### S/S Heavy Duty Wire Board Rack (Single)

Keep all your chopping boards neatly organised with the six slot S/S chopping board rack. Designed for strength and hygiene, the rack ensures your boards are kept upright and easily accessible, so you can quickly grab the right board for the job. Suitable for 1/2" & 1" boards.

**NV-1700**



### Plastic Knockdown Board Rack (Single)

Made with six 25mm slots, the rack is perfect for storing colour coded chopping board sets to help you prevent cross contamination. The rack is also dishwasher-safe to making cleaning effortless. Suitable for 1/2" boards only.

**NV-1600**



### 1/2" Low-Density White Board with handle (Single)

Plain white chopping board for use with bakery and dairy, helping your staff avoid cross-contamination in the kitchen. The compact design and convenient handle also makes the board ideal for bar use when preparing garnishes or cocktail slices. Size: 25.4 x 15.2 x 1.3cm

**NV-156**



### Acacia Wood Chopping Board (Single)

This Acacia Wood Chopping Board is robust, durable and includes finger grooves for easy lifting and cleaning. The attractive premium acacia board are also perfect to use as a buffet display item for showing your cakes and sweet treats to customers. Size: 45.5 x 30.5 x 4.5cm.

**NV-WD1812**



### Clear Narrow Neck Squeeze Sauce Bottles - 3 Sizes

Simply squeeze to release sauce, to produce beautifully presented dishes with ultimate control over drizzling and decorating. The clear bottle makes sauce inside easy to identify, ensuring you dispense the correct condiment first time.

**NV-SQB08C- 8oz/23cl bottle**

**NV-SQB12C - 12oz/35cl bottle**

**NV-SQB24C- 24oz/71cl bottle**



### Clear Wide Neck Squeeze Sauce Bottles - 3 Sizes

Simply squeeze to release sauce, to produce beautifully presented dishes with ultimate control over drizzling and decorating. The clear bottle makes sauce inside easy to identify, ensuring you dispense the correct condiment first time.

**NV-SQBW16C- 16oz/47cl bottle**

**NV-SQBW24C- 24oz/71cl bottle**

**NV-SQBW32C- 32oz/94cl bottle**



### Vacuum Packing Pouches 70mic - 3 Sizes

These vacuum bags are the perfect solution for efficient, hygienic sealing and storing of food, helping to extend the shelf life of a variety of products by up to 3-5 days. To be used in conjunction with a vacuum sealing machine - suitable for cheese and meat etc.

**WP-200300 - 200 x 300mm (PK 1000)**

**WP-250300 - 250 x 300mm (PK 1000)**

**WP-300400 - 300 x 400mm (Pk 500)**



### Purple Allergen Colour-Coded GN Containers - 4 Sizes

Our range of allergen free GN air-tight containers are ideal for safe storage of food in an organised manner. Each container denotes the most common allergens which should not be stored within these boxes. Comes complete with a set of four colour coding clips and a permanent wipe clean label to aid identification of contents and for simplified food rotation. Temperature range: -40 to 100C.

**NV-12480AL - GN 1 / 2 - 150mm - 10L capacity**

**NV-12450AL - GN 1 / 3 - 150mm - 6L capacity**

**NV-12420AL - GN 1 / 4 - 150mm - 4.3L capacity**

**NV-12390AL - GN 1 / 6 - 150mm - 2.6L capacity**



### Colour-Coded GN Containers - 9 Sizes

Made from translucent Polypropylene material, the storage containers are fully airtight ensuring food stays fresher for longer and safe from contamination. They are stackable for organised storage as well as being freezer and dishwasher safe. Temperature range: -25 to 100C. Maximum of 15 minutes in microwave. Supplied with a set of four colour coding clips to aid identification of contents.

**NV-GNPP12-100 - GN 1 / 2 - 100mm - 6.8L capacity**

**NV-GNPP12-150 - GN 1 / 2 - 150mm - 10L capacity**

**NV-GNPP13-100 - GN 1 / 3 - 100mm - 4.3L capacity**

**NV-GNPP13-150 - GN 1 / 3 - 150mm - 6.5L capacity**

**NV-GNPP14-100 - GN 1 / 4 - 100mm - 3L capacity**

**NV-GNPP14-150 - GN 1 / 4 - 150mm - 4.5L capacity**

**NV-GNPP16-100 - GN 1 / 6 - 100mm - 1.9L capacity**

**NV-GNPP16-150 - GN 1 / 6 - 150mm - 2.8L capacity**

**NV-GNPP19-100 - GN 1 / 9 - 100mm - 1.1L capacity**



### Ice Cream Storage Containers - 2 Sizes

Made from premium food safe plastic, these tubs offer essential protection for your frozen desserts, And because they're dishwasher-safe, keeping the containers clean and hygienic between uses is effortless too. You can even use them in the microwave for defrosting or reheating tasks if needed.

**FF-EB762 - 2 Litre Tub**

**FF-EB763 - 4 Litre Tub**

**FF-EB764 - Lid to fit both 2L & 4L**



### Ingredient Bins - 5 Sizes

Efficiently store your ingredients, with these ingredient bins and scoops. The sliding lid gives your staff easy access while allowing your ingredients to stay fresher for longer. Constructed from strong durable polypropylene plastic. Mobile ingredient bins are fitted with castors.

**NV-PPBIN7 - 7.6L capacity - 36.7 x 29.6 x 22cm**

**NV-PPBIN18 - 18L capacity - 59.3 x 29 x 43.2cm**

**NV-PPBIN38 - 38L capacity - 59.3 x 48.6 x 43.2cm**

**NV-PPBIN81 - 81L capacity - 74.8 x 32.8 x 74cm**

**NV-PPBIN102 - 102L capacity - 75 x 41 x 74.5cm**





### Blue Assorted Plasters (100 Pack)

Designed to be clearly visible during food preparation, these assorted blue plasters help cover and protect cuts, allowing the user to continue on with their day. This pack includes plasters shaped for the most common cut areas.

**DP-QP7080**



### Sterile Eye Wash 20ml Pods (Pack of 25)

These pods provide a quick and convenient solution for eye irrigation. Each pod is individually sealed to maintain sterility and ensure safe use. The 20ml pods are perfect for single-use, providing just the right amount of solution for effective eye irrigation.

**FF-E9916**



### Fire Blanket 1.2 x 1.2m (Single)

An essential for every kitchen or venue where food is prepared, this quick-release fire blanket can extinguish small fires in their early stages and can also be wrapped around your body for protection and escape in the event of a full-scale fire. Conforms To BS EN 1869:1997. Size: 120 x 120cm.

**NV-FB12**



### Medium Catering First Aid Kit (BS Compliant)

Respond quickly and safely to accidents with this essential first aid item containing: 2 x 10 x 10 Burn dressing, 3 x Cleansing wipes, 2 x Conforming bandage, 3 x Finger dressing, 2 x Foil blanket, 9 Pairs of nitrile gloves, 1 Guidance note, 3 x HSE eyepad dressing, 2 x HSE large dressing, 6 x HSE medium dressing, 1 Microporous tape, 60 x Assorted plasters, 1 Resuscitation Aid, 12 x Safety pins, 1 Tuffcut scissors, 3 x Triangular bandage.

**DP-QF2221**



### Black Rubber Kitchen Mat 90 x 150 x 1.2cm

This mat is perfect for use in busy commercial kitchens, that helps to prevent slips and falls - helping to keep staff and guests safe. Also provides anti-fatigue properties, that offers joint relief for staff, helping to keep ankles, knees, hips and backs. This makes it easier for staff to stand for long periods of time during their shift, with minimal aches and pains.

**NV-MAT14**



### HMSO Accident Report Book A4

Ensure your workplace remains compliant with the HMSO Accident Report Book A4. Designed for meticulous record-keeping, this essential tool guides you through accurately documenting employee injuries, aligning with the Data Protection Act 1988. 40 Pages.

**UR-1G0005**



### Catering Burns Kit

Respond quickly and safely to burns with this essential first aid item. The pack contains: 2 x Burn care burn blot, 2 x Burn care 10x10cm, 2 x Burn care 20x20cm, 1 x Burn care hydrogel 59ml, 3 x conforming bandage, 5 x eye wash pod, 2 pairs of vinyl gloves, 4 x low adherent dressing, 1 x microporous tape, 1 x scissors, 1 x wall bracket.

**BM-3712**



### Burns Gel Bottle 120ml

The hydrogel burns gel is a great solution for treating minor burns and scalds. Designed to minimise trauma and soothe quickly, this 120ml bottle is a great addition to your first aid kit, especially in areas where burns are more likely.

**BM-3713**



### S/S Barrier Posts - Retractable Black Belt (Sold in Pairs)

Barrier post system with retractable belt. Pack includes two posts and belt for easy assembly. Features special internal braking mechanism to ensure belt strap returns slowly and safely. The barrier belt extends up to 2 meters with four-way slide connectors for multiple layouts to be arranged. Features a secure weighted base. Size: 320mm x 910mm.

- NV-BP-BLTB - Stainless Steel**
- NV-BP-BLTBBK - Black Coated**



### Children's Wooden High Chair - Light Wood

Ensure mealtimes are safe and comfortable for little ones with this wooden high chair. Built for children up to 36 months and weighing up to 15kg who can sit up unaided. The adjustable 5-point harness minimises the risk of children slipping or wiggling free, giving parents peace of mind while they dine. Size: 510 x 510 x 750mm.

**NV-HCHAIR-LW**

# Deliveries & Collections

---

At LBK Supplies, we aim to make ordering, collecting, and receiving your goods as simple and convenient as possible.

## 1. Ordering

- Orders can be placed by phone, email or text message.
- Once your order is confirmed, we will advise you of stock availability and provide an estimated collection or delivery date.
- For large palletised orders or new openings, we may need additional time to collate and check your goods, so please speak to a member of the LBK team for further assistance.

## 2. Collections

- Customers are welcome to collect their goods directly from our showroom during normal working hours:
  - Monday – Friday: 8:30am – 5:00pm
  - Saturday & Sunday: Closed
  - England & Wales Bank Holidays: Closed
- Please allow reasonable time for us to prepare your order before collection. We recommend calling ahead to confirm your order is ready.
- On collection, customers are responsible for checking goods and ensuring they are correct before leaving the premises.

## 3. Delivery Service

Currently we operate our own van delivery service in the following areas, please contact the LBK for the latest delivery schedule. If you require delivery outside of these areas, please contact a member of the LBK Team to discuss.

- Bristol
- Somerset
- Gloucestershire
- Worcestershire
- West Midlands
- Wiltshire

Delivery Terms:

- Delivery is available on qualifying orders—please confirm with our team at the time of ordering.
- Standard delivery lead times are subject to stock availability. We will confirm the expected delivery date when processing your order.
- Delivery charges may apply, for non-stock items where the order is sent direct from the supplier to customer.
- Goods will be delivered to the address specified at the time of ordering. Customers are responsible for ensuring suitable access for our delivery vehicle and driver.

## 4. Customer Responsibilities

- Please ensure someone is available at the delivery address to receive and sign for the goods.
- Any delivery shortages or damages must be reported to us within 48 hours of receipt.
- For collections, once goods leave our premises, LBK Supplies cannot accept responsibility for any loss or damage in transit.

## 5. Additional Information

- Deliveries outside of our standard coverage area may be available upon request, and will be subject to quotation.
- LBK Supplies reserves the right to amend delivery routes, timescales, and charges. Customers will be informed of any changes at the point of order.

# Returns & Cancellations

---

## Returns Policy - (Business Customers only)

At LBK Supplies Ltd, we want you to be fully satisfied with your purchase. If you need to return goods, please follow the process below to ensure your return is handled quickly and efficiently.

Please note: Special order items, Spare parts and Personalised items we are not able to accept any returns.

### 1. Return Period

Goods may be returned within 30 days of delivery. Returns requested after this period cannot be accepted. Please check your delivery documentation carefully upon receipt and report any damages within 48 hours.

### 2. Requesting a Return

Before returning any goods, you must contact the LBK team by phone or email to request a Returns Number (RN).

- Returns without prior authorisation or a valid returns number may be refused or disposed of.
- Please ensure you have your order details ready when contacting us.

### 3. Condition of Goods

We can only accept goods that are:

- Unused and unopened
- In their original packaging
- Securely wrapped and boxed to ensure they arrive in a resaleable condition

Items that do not meet these conditions may be rejected.

### 4. Collection and Return Options

- Within our delivery area: If you are located within our delivery coverage, we will collect returns using our own transport service free of charge.
- Outside our delivery area:
  - If the goods were ordered incorrectly, you may return them at your own expense.
  - Alternatively, we can arrange a collection through our courier service. This will incur a standard fee of £15.00 + VAT.

Goods may also be returned in person to our premises, returns made in this way will not incur a collection fee.

Returns Address:

Returns Dept,  
LBK Supplies Ltd,  
Unit 7 Fairfax Business Park,  
Oldmixon Crescent,  
Weston-super-Mare,  
BS24 9AW.

### 5. Refunds

Once the goods have been safely received and inspected, our warehouse team will approve the return and forward it to our Accounts Department for processing.

- Refunds will be issued within 14 working days of us receiving the goods.
- Any applicable collection charges will be deducted from the refund.
- Refunds will be made in line with current consumer contract regulations.



01934 311621



sales@lbksupplies.co.uk



07399 132496



www.lbksupplies.co.uk

**LBK**  
SUPPLIES



LBK Supplies Ltd  
Unit 7 Fairfax Business Park  
Oldmixon Crescent  
Weston-super-Mare  
BS24 9AW

T: 01934 311621  
M: 07399 132496  
W: [lbksupplies.co.uk](http://lbksupplies.co.uk)