



Catalogue

Patient Gown, Medical Uniform And Chef Wear.



Lucky Impex

Manufacturer & Exporter

Karachi - Pakistan

ABOUT US

Lucky Impex, a manufacturer and exporter headquartered in Karachi, Pakistan, was established by the late Chairman Haji Ali Muhammad Tabba in 1955. Initially focused on textile trading, the company later diversified its operations to include sourcing high-end fabric from Pakistan for overseas customers.

In the late 1980s, the company established a manufacturing unit to facilitate the export of Fabrics, Bed Linen, Home Textiles, and Institutional linens to the UK, USA, and Japan. Lucky Impex has emerged as a prominent player in the textiles industry, holding a significant share in Pakistan's exports. The company's primary export destinations include the USA, UK, EU Countries, Middle Eastern Countries, Japan, Australia, New Zealand, and South America.

As a family-owned business, Lucky Impex is currently led by the third generation of the founding family. In addition to its textile business, the company also operates in the real estate, education, and healthcare sectors.

Lucky Impex's state-of-the-art manufacturing facility, spanning approximately 125,000 square feet in the Korangi Industrial Area, is equipped with modern sewing and packing facilities and employs over 500 skilled workers to meet customer demands. Furthermore, the company maintains a separate facility in Karachi for weaving, printing, and dyeing.

Specializing in Healthcare/Medical Uniforms & linen, Patient wear, Home Textiles, and a comprehensive range of Bed Linen articles, Lucky Impex has been exporting these products to major global destinations for more than four decades.

We are dedicated to serving our clients and eagerly anticipate fostering enduring business relationships in the foreseeable future.

Thank you.

=Management=

I.V Gown With Telemetry Pocket

Metal Snaps on Sleeves, Tie Back Closure



Technical Details

Fabric: Sheeting, Twill

* 55% Cotton 45% Polyester

Weight: 140 gsm to 150 gsm

* 65% Polyester 35% Cotton

Weight: 140 gsm to 150 gsm

Production: Sulzer Loom,

Fabric Process: Pigment Print,

Snaps: Kane Morito Metal Snaps

Design:

Up to 100 Designs

Washing Temperature:

60°C to 90°C (depending on customer's requirement)

Washing:

25 Washes to 50 Washes (depending on customer's requirement)

Treatments: Water Repellent, Anti Microbial

2

ESTD. 1955
Sueky Impex

157 Banglore Town, Tipu Sultan Road, Karachi 75350, Pakistan.

Universal Patient Gown

Tie Back Closure



Contrast Color Ties

White Color Ties

Technical Details

Fabric: Sheeting, Twill

* 55% Cotton 45% Polyester
Weight: 140 gsm to 150 gsm

* 65% Polyester 35% Cotton
Weight: 140 gsm to 150 gsm

Production: Sulzer Loom,

Fabric Process: Pigment Print,

Design:
Up to 100 Designs

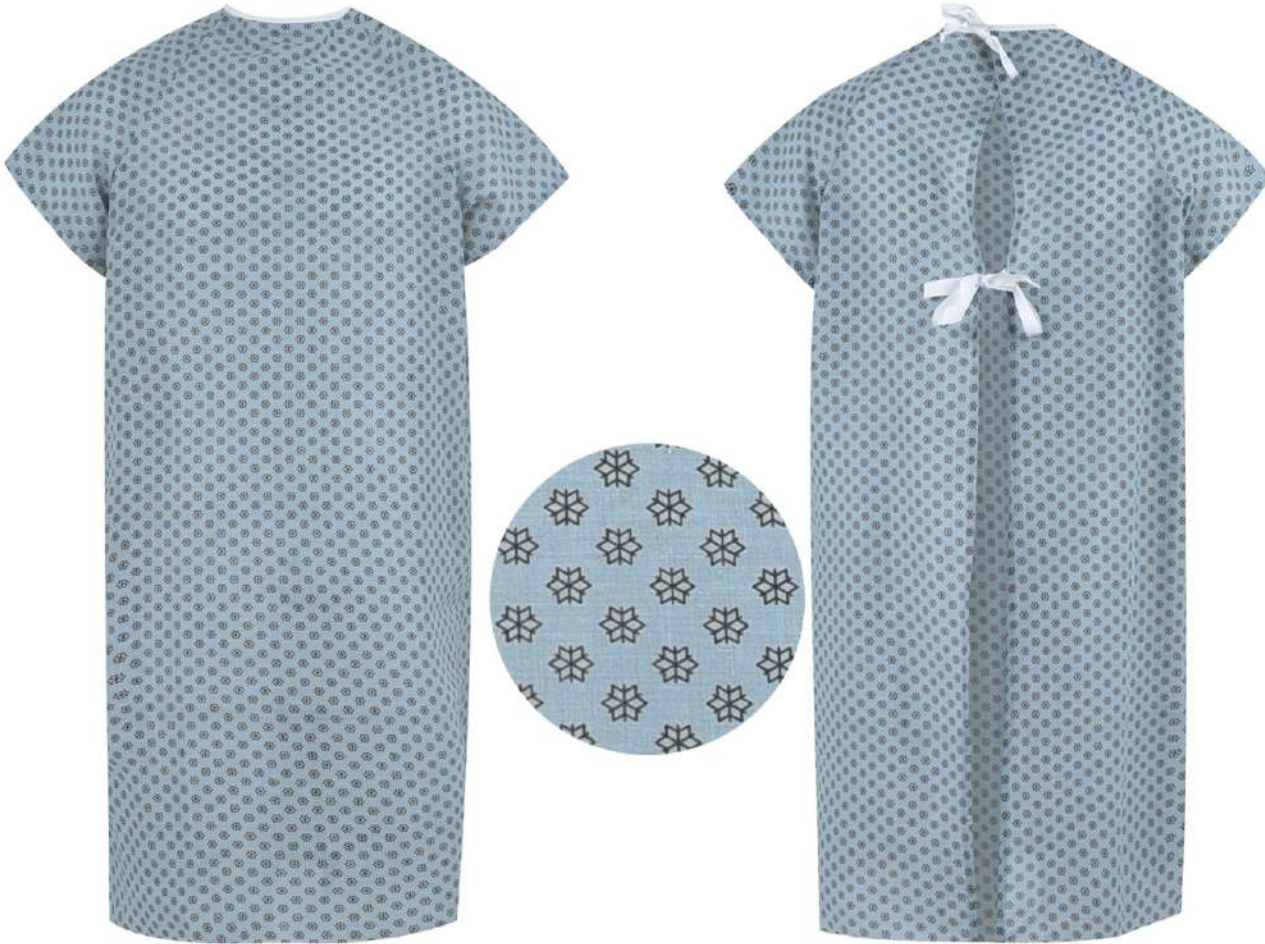
Washing Temperature:
60°C to 90°C (depending on customer's
requirement)

Washing:
25 Washes to 50 Washes (depending on
customer's requirement)

Treatments: Water Repellent, Anti Microbial

Economy Gown

Tie Back Closure



Technical Details

Fabric: Sheeting,

* 55% Cotton 45% Polyester

Weight: 90 gsm to 100 gsm

* 65% Polyester 35% Cotton

Weight: 90 gsm to 100 gsm

Production: Sulzer Loom,

Fabric Process: Pigment Print,

Design:

Up to 100 Designs

Washing Temperature:

60°C to 90°C (depending on customer's requirement)

Washing:

25 Washes to 50 Washes (depending on customer's requirement)

ESTD. 1955
Sucky Smpber

Solid Dyed Isolation Gown

Tie Back Closure, Long Sleeves, knitted Cuffs



Technical Details

Fabric: Sheeting, Broad Cloth,

* 55% Cotton 45% Polyester
Weight: 100 to 105 gsm

* 70% Cotton 30% Polyester
Weight: 100 to 105 gsm

Production: Sulzer Loom,

Fabric Process:
Pigment Dyed

Colors :



Yellow



Pale Blue

Washing Temperature:

60°C to 90°C (depending on customer's requirement)

Washing:

25 Washes to 50 Washes (depending on customer's requirement)

Treatments: Water Repellent, Anti Microbial

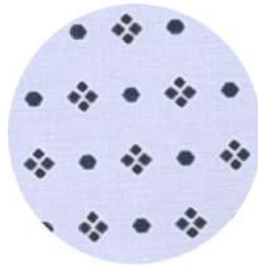
5 Pocket I.V Gown

Velcro Closure, Short Sleeves

Front



Back



Technical Details

Fabric: Sheeting,

* 55% Cotton 45% Polyester
Weight: 125 gsm to 140 gsm

* 65% Polyester 35% Cotton
Weight: 140 gsm to 150 gsm

Production: Sulzer Loom,

Fabric Process: Pigment Print

Design: Upto 100 Designs.

Washing Temperature:
60°C to 90°C (depending on customer's
requirement)

Washing:
25 Washes to 50 Washes (depending on
customer's requirement)

Treatments: Water Repellent, Anti Microbial

7

Unisex Operation Theatre Gown

Tie Back Closure, Long Sleeves, Knitted cuffs



Technical Details



Fabric: Sheeting, Twill

* 55% Cotton 45% Polyester
Weight: 125 gsm to 140 gsm

* 65% Polyester 35% Cotton
Weight: 125 gsm to 140 gsm

Production: Sulzer Loom, Airjet Looms

Fabric Process: Pigment Dyed,
VAT Dyed, VAT/Disperse Dyed.

Colors:  
Jade Green Hospital Blue

Washing Temperature:
60°C to 90°C (depending on customer's
requirement)

Washing:
25 Washes to 50 Washes (depending on
customer's requirement)

Treatment: Antimicrobial, Water Repellent

Lucky Impex
ESTD. 1955

157 Banglore Town, Tipu Sultan Road, Karachi 75350, Pakistan.

Modesty Patient Gown

Front Opened With Telemetry Pocket
Metal Snaps on Shoulder & Sleeves.



Technical Details

Fabric: Sheeting, Twill

* 55% Cotton 45% Polyester
Weight: 140 gsm to 150 gsm

* 65% Polyester 35% Cotton
Weight: 140 gsm to 150 gsm

Production: Sulzer Loom,

Fabric Process: Pigment Print,

Snaps: Kane Morito Metal Snaps

Design:
Up to 100 Designs

Washing Temperature:
60°C to 90°C (depending on customer's
requirement)

Washing:
25 Washes to 50 Washes (depending on
customer's requirement)

Treatment: Antimicrobial, Water Repellent



ESTD. 1955
Sueky Smpber

Kid's Patient Gown

Plastic Snap Closure, Short Sleeves

Front



Back



Technical Details

Fabric: Sheeting, Broad Cloth,

* 55% Cotton 45% Polyester
Weight: 125 gsm to 140 gsm

* 65% Polyester 35% Cotton
Weight: 140 gsm to 150 gsm

Production: Sulzer Loom,

Fabric Process: Pigment Print

Design: Various

Washing Temperature:
60°C to 90°C (depending on customer's
requirement)

Washing:
25 Washes to 50 Washes (depending on
customer's requirement)

Treatment: Antimicrobial, Water Repellent

Patient Pyjama Set

V-Neck Half Opened Placket With Kane Morito Metal Snaps,
Full Elastic Pants



Technical Details

Fabric: Poplin, Sheeting, Percalé and Twill

* 55% Cotton 45% Polyester

Weight: 135 gsm to 200 gsm

* 65% Polyester 35% Cotton

Weight: 135 gsm to 200 gsm

* 100% Cotton Weight: 135 gsm to 200 gsm

* 97% Cotton 3% Spandex

Weight: 140 gsm

Production: Airjet Loom,

Fabric Process: Pigment Printed

Designs: Up to 100 Designs

Washing Temperature:

40°C to 70°C (depending on customer's requirement)

Washing:

25 Washes to 50 Washes (depending on customer's requirement)

Treatment: Antimicrobial, Water Repellent

Polyester Patient Gown

Plastic Button Back Closure



Technical Details

Fabric: Plain Weave

* 100% Polyester

Weight: 125 gsm to 135 gsm

Production: Sulzer

Fabric Process: Disperse Dyed

Snaps: Kane Morito Plastic Snaps

Colors:

Customized

Washing Temperature:

60°C to 90°C (depending on customer's requirement)

Washing:

25 Washes to 50 Washes (depending on customer's requirement)

Yarn-Dyed Gown

Half Placket Front Opened With Plastic Button
Back Opened With Plastic Button Closure



Technical Details

Fabric: Yarn-Dyed 1/1

* 55% Cotton 45% Polyester
Weight: 140 gsm to 150 gsm

* 65% Polyester 35% Cotton
Weight: 140 gsm to 150 gsm

Production: Airjet,

Fabric Process: Disperse/VAT,

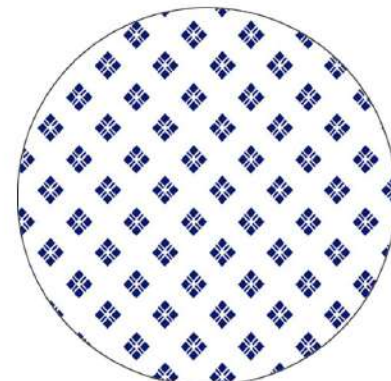
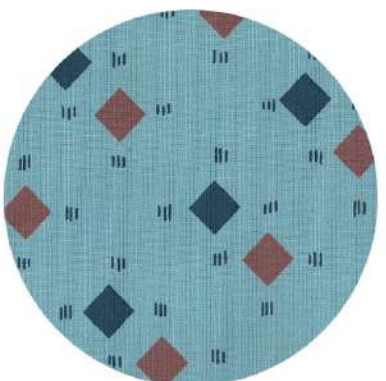
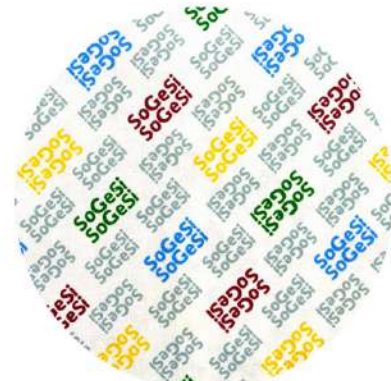
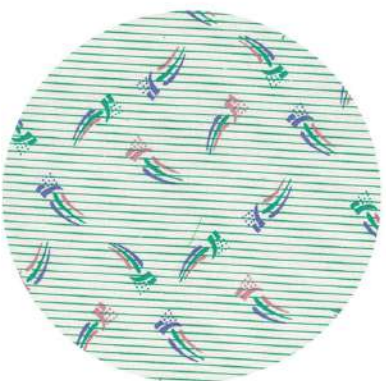
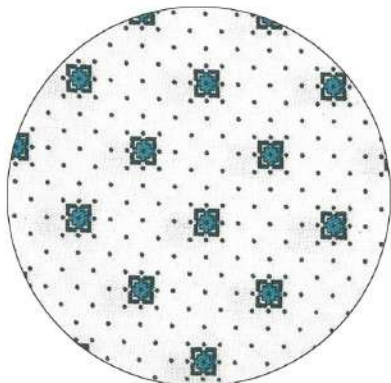
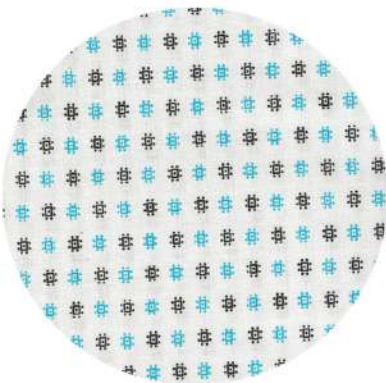
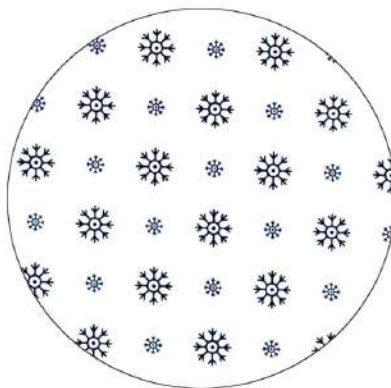
Buttons: Plastic Buttons

Design & Colors:
Customized

Washing Temperature:
60°C to 90°C (depending on customer's
requirement)

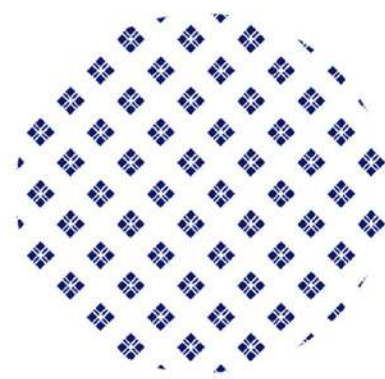
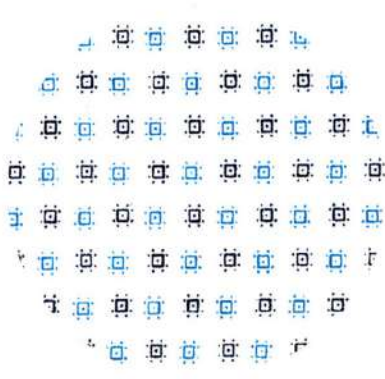
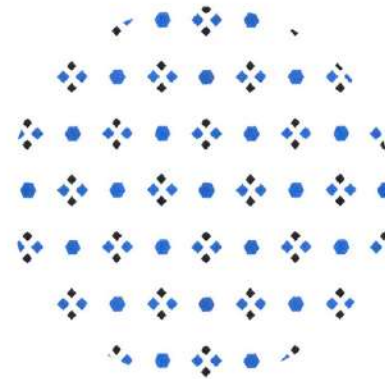
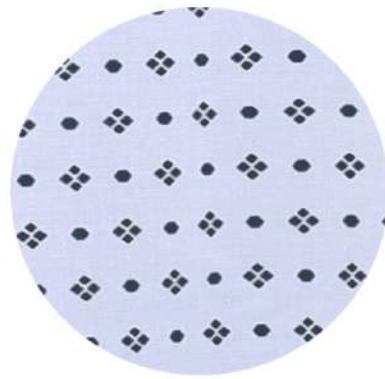
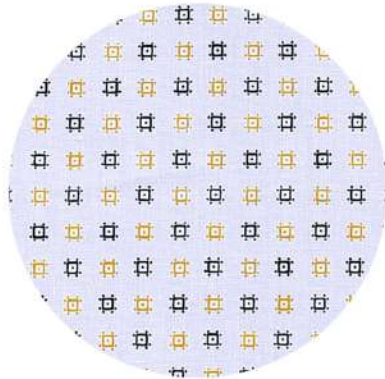
Washing:
25 Washes to 50 Washes (depending on
customer's requirement)

Patient Gown Designs



Lucky Impex
ESTD. 1955

Patient Gown Designs



Sueky Smpber

ESTD. 1955

Medical Uniforms

Female Scrub Set

V-Neck 3 Pocket Top, Full Elastic Waist Cargo Pant



Technical Details

Fabric: Poplin, Sheeting, Percale and Twill

* 55% Cotton 45% Polyester

Weight: 135 gsm to 200 gsm

* 65% Polyester 35% Cotton

Weight: 135 gsm to 200 gsm

* 100% Cotton Weight: 135 gsm to 200 gsm

* 97% Cotton 3% Spandex

Weight: 140 gsm

Production: Airjet Loom,

Fabric Process:

Reactive, Reactive/Disperse VAT, VAT/Disperse

Colors: Up to 20 Colors

Washing Temperature:

40°C to 90°C (depending on customer's requirement)

Washing:

25 Washes to 50 Washes (depending on customer's requirement)

Treatment: Antimicrobial, Water Repellent,
Crease Resistant

Medical Uniforms

Female Basic Style

V-Neck 3 Pocket Top, Half Elastic Half Draw String Waist Pant



Technical Details

Fabric: Poplin, Sheeting, Percale and Twill

* 55% Cotton 45% Polyester

Weight: 135 gsm to 200 gsm

* 65% Polyester 35% Cotton

Weight: 135 gsm to 200 gsm

* 100% Cotton Weight: 135 gsm to 200 gsm

* 97% Cotton 3% Spandex

Weight: 140 gsm

Production: Airjet Loom,

Fabric Process:

Reactive, Reactive/Disperse, VAT, VAT/Disperse

Colors: Up to 20 Colors

Washing Temperature:

40°C to 90°C (depending on customer's requirement)

Washing:

25 Washes to 50 Washes (depending on customer's requirement)

Treatment: Antimicrobial, Water Repellent,
Crease Resistant

16

ESTD. 1955
Sueky Empor

Medical Uniforms

Female Scrub Pants

Full Elastic 2 Side Pockets



Technical Details

Fabric: Poplin, Sheeting, Percale and Twill

- * 55% Cotton 45% Polyester
Weight: 135 gsm to 200 gsm
- * 65% Polyester 35% Cotton
Weight: 135 gsm to 200 gsm
- * 100% Cotton Weight: 135 gsm to 200 gsm

* 97% Cotton 3% Spandex
Weight: 140 gsm

Production: Airjet Loom,

Fabric Process:

Reactive, Reactive/Disperse, VAT, VAT/Disperse

Colors: Up to 20 Colors

Washing Temperature:
40°C to 90°C (depending on customer's
requirement)

Washing:

25 Washes to 50 Washes (depending on
customer's requirement)

Treatment: Antimicrobial, Water Repellent,
Crease Resistant

Medical Uniforms

Female Polyester Basic Scrub Set

V-Neck 3 Pocket Top, Full Elastic Waist Cargo Pant



Technical Details

Fabric: 100% Polyester

Production: Imported Fabric

Fabric Process:
Disperse Dyed

Colors: Up to 5 Basic Colors

Washing Temperature:
60°C to 90°C (depending on customer's
requirement)

Washing:
50 Washes to 70 Washes (depending on
customer's requirement)

Medical Uniforms Printed Scrub Top



Technical Details

Fabric: Poplin, Sheeting, Percale,

* 55% Cotton 45% Polyester
Weight: 135 gsm to 150 gsm

* 100% Cotton Weight: 135 gsm to 150 gsm

* 97% Cotton 3% Spandex
Weight: 140 gsm

Production: Airjet Loom,

Fabric Process:
Reactive, Reactive/Disperse
Pigment Printed

Designs: According To Customer's Requirement

Washing Temperature:
40°C to 60°C (depending on customer's
requirement)

Washing:
25 Washes to 50 Washes (depending on
customer's requirement)

Medical Caps



Technical Details

Fabric: Poplin, Sheeting, Percalé and Twill

* 55% Cotton 45% Polyester

Weight: 135 gsm to 200 gsm

* 65% Polyester 35% Cotton

Weight: 135 gsm to 200 gsm

* 100% Cotton Weight: 135 gsm to 200 gsm

* 97% Cotton 3% Spandex

Weight: 140 gsm

Production: Airjet Loom,

Fabric Process:

Reactive, Reactive/Disperse, VAT, VAT/Disperse

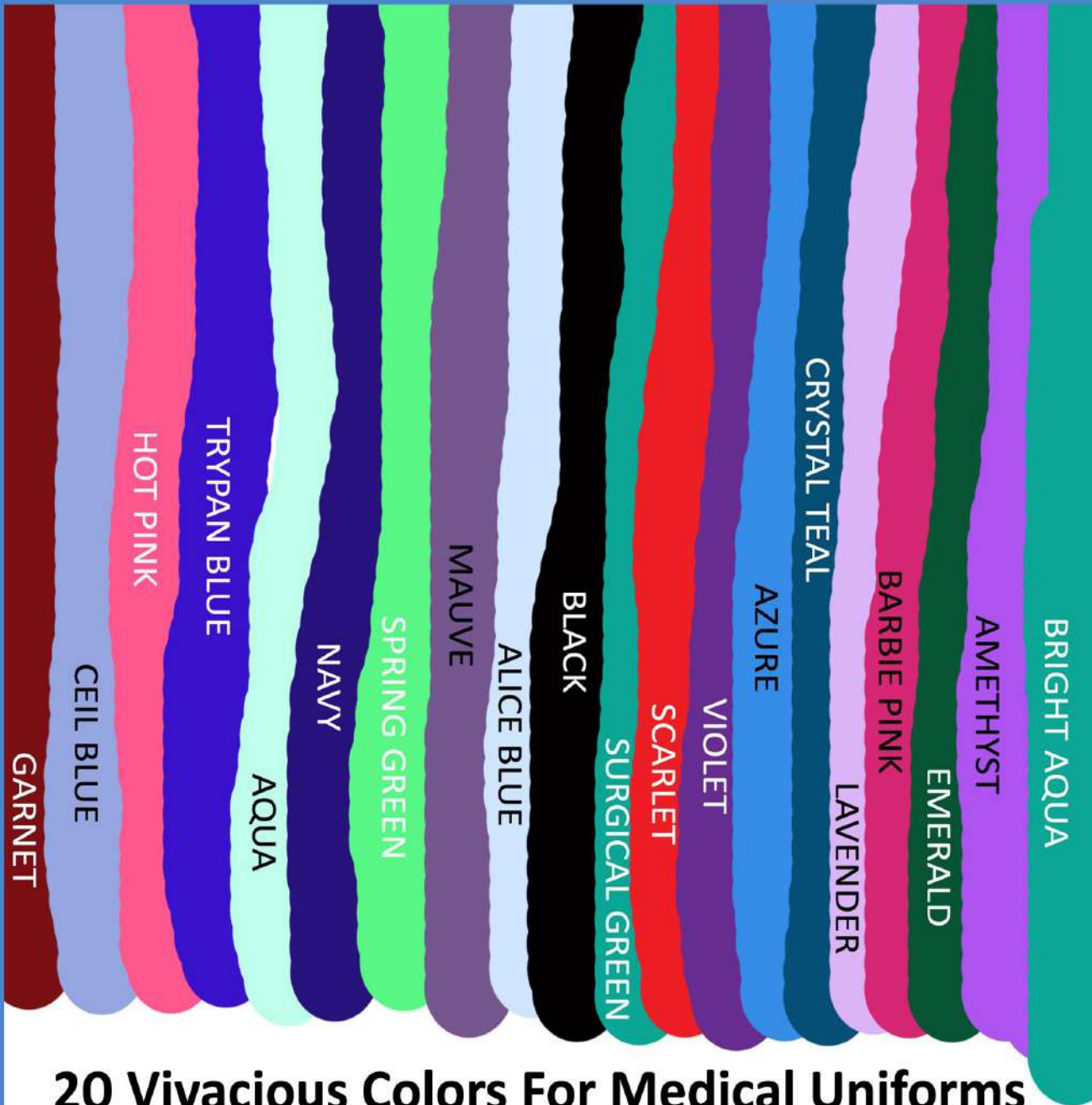
Colors: Up to 20 Colors, Customized Designs.

Washing Temperature:

40°C to 90°C (depending on customer's requirement)

Washing:

25 Washes to 50 Washes (depending on customer's requirement)



20 Vivacious Colors For Medical Uniforms

Fabric: Poplin, Sheeting, Percale and Twill

Production: Airjet Loom,

* 55% Cotton 45% Polyester
Weight: 135 gsm to 200 gsm

Fabric Process:
Reactive, Reactive/Disperse
VAT, VAT/Disperse

* 65% Polyester 35% Cotton
Weight: 135 gsm to 200 gsm

* 100% Cotton Weight: 135 gsm to 200 gsm

* 97% Cotton 3% Spandex
Weight: 140 gsm

Chef Wear



Technical Details

Fabric: Heavy Poplin, Poplin,
Canvas & Twill

* 100% Cotton

* Cotton / Polyester (Cotton Rich)

Production: Sulzer Loom, Airjet Loom

Fabric Process:

Reactive, Reactive/Disperse

Design: Stripe and Checkered

Washing Temperature:

60°C To 90 °C

Treatment: Antimicrobial,

Water Repellent, Fire Retardant

Crease Resistant.

Washing: 25 to 50 Washes

Female Hospital Tunic

Front Opened With Kane Morito Metal Snaps
2 Lower Pockets



Technical Details

Fabric: Poplin, Sheeting, Percale and Twill

* 55% Cotton 45% Polyester

Weight: 135 gsm to 200 gsm

* 65% Polyester 35% Cotton

Weight: 135 gsm to 200 gsm

* 100% Cotton Weight: 135 gsm to 200 gsm

* 97% Cotton 3% Spandex

Weight: 140 gsm

Production: Airjet Loom,

Fabric Process: Reactive, Reactive/Disperse VAT, VAT/Disperse

Colors: Up to 20 Colors

Washing Temperature:

40°C to 90°C (depending on customer's requirement)

Washing:

25 Washes to 50 Washes (depending on customer's requirement)

Treatment: Antimicrobial, Water Repellent, Wrinkee Free.

Female Hospital Tunic

Front Opened



Technical Details

Fabric: Poplin, Sheeting, Percale and Twill

* 55% Cotton 45% Polyester

Weight: 135 gsm to 200 gsm

* 65% Polyester 35% Cotton

Weight: 135 gsm to 200 gsm

* 100% Cotton Weight: 135 gsm to 200 gsm

* 97% Cotton 3% Spandex

Weight: 140 gsm

Production: Airjet Loom,

Fabric Process:

Reactive, Reactive/Disperse VAT, VAT/Disperse

Colors: Customized

Washing Temperature:

40°C to 90°C (depending on customer's requirement)

Washing:

25 Washes to 50 Washes (depending on customer's requirement)

Treatment: Antimicrobial, Water Repellent, Wrinkee Free.

25

Female Lab Coat / Tunic

Long Sleeves, 2 Lower Pockets



Technical Details

Fabric: Poplin, Sheeting, Percale and Twill

* 55% Cotton 45% Polyester

Weight: 135 gsm to 200 gsm

* 65% Polyester 35% Cotton

Weight: 135 gsm to 200 gsm

* 100% Cotton Weight: 135 gsm to 200 gsm

* 97% Cotton 3% Spandex

Weight: 140 gsm

Production: Airjet Loom,

Fabric Process: Bleached.

Snaps: Kane Morito Metal Snaps

Colors: Up to 20 Colors

Washing Temperature:

60°C to 90°C (depending on customer's requirement)

Washing:

25 Washes to 50 Washes (depending on customer's requirement)

Treatment: Antimicrobial, Water Repellent, Wrinkle Free.

Lucky Impex
ESTD. 1955

Female Yarn-Dyed Stripe Tunics



Technical Details

Fabric: Poplin, Sheeting

* 65% Polyester 35% Cotton

Weight: 150 to 180 gsm

* 55% Cotton 45% Polyester

Weight: 150 to 180 gsm

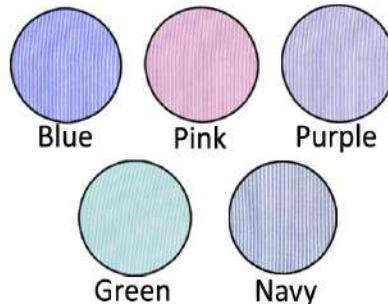
Production: Sulzer Loom, Airjet Looms,

Fabric Process:

Printed OR Yarn-Dyed Vat/Disperse

Design: Pin Stripes

Colors:



Washing Temperature:

40°C to 90°C (depending on customer's requirement)

Washing:

25 Washes to 50 Washes (depending on customer's requirement)

Doctor Coats

Female Doctor Coats



Male Doctor Coats



Technical Details

Fabric: Heavy Poplin, Sheerting and Twill

* 100% Cotton Weight: 180 - 200 gsm

* 55% Cotton 45% Polyester
Weight: 180 - 200 gsm

Production: Airjet Looms,

Fabric Process:
Bleached White

Washing Temperature:
40°C to 90°C (depending on customer's
requirement)

Washing:
25 Washes to 100 Washes (depending on
customer's requirement)

Treatment: Antimicrobial, Water Repellent,
Wrinkee Free.

Tabard Aprons

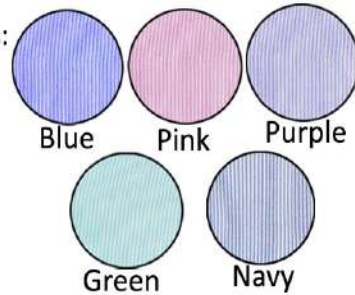


White With VAT Green Binding



Yarn-Dyed Stripe With VAT Blue Binding.

Colors:



Technical Details

Fabric: Poplin, Sheeting

* 65% Polyester 35% Cotton

Weight: 150 to 180 gsm

* 55% Cotton 45% Polyester

Weight: 150 to 180 gsm

Production: Sulzer Loom, Airjet Looms,

Fabric Process:

Printed OR Yarn-Dyed Vat/Disperse

Design: Pin Stripes

Washing Temperature:

40°C to 90°C (depending on customer's requirement)

Washing:

25 Washes to 50 Washes (depending on customer's requirement)

Flannel Baby Wraps / Blankets



Technical Details

Fabric: Flannel

* 100% Cotton Both Side Brushing

Production: Sulzer Loom,

Fabric Process:
Pigment Printed Flannel

Design: Various

Washing Temperature:
40°C

Washing:
25 Washes to 50 Washes

Other Products



100% Cotton One Side Terry Bib



Polyester Mesh Laundry Bag

Hotel And Hospital Linen



Technical Details

Fabric: Sheeting, Percale, Sateen

Thread Counts: T130 to T300.

* 100% Cotton.

* Cotton Rich / Polyester Rich.

Production: Airjet Loom,

Fabric Process:
Bleached White
VAT Yarn-Dyed.

Other Products

* Knitted and Woven Flat Sheet,
Fitted Sheet,

* Woven Pillow Case/Ticks, Hospital & Hotel Towels.



Factory At A Glance

32



Sucky Empver
ESTD. 1955

33



Lucky Impex
ESTD. 1955

Lucky Impex Head Office.

Keeping in view our environmental policy and reducing carbon foot print, Lucky Impex has installed 100% solar energy at our Head Office and the Factory.

157 Banglore Town, Tipu Sultan Road, Karachi 75350, Pakistan.

8 Accreditation



STANDARD 100



Sucky Empire
ESTD. 1955



Lucky Impex
Textile Manufacturer & Exporter



157 Banglore Town, Tipu Sultan Road,
Karachi 75350, Pakistan



0092-21-34542772
0091-21-34542773



info@luckyimpex.com



www.luckyimpex.com



@LuckyImpexofficial



/lucky-impex



Plot # 22/23, Sector 20,
Korangi Industrial Area,
Karachi - Pakistan.



0092-21-35045781

Lucky Impex
ESTD. 1955

157 Banglore Town, Tipu Sultan Road, Karachi 75350, Pakistan.