

Winchelsea Star

Price \$1

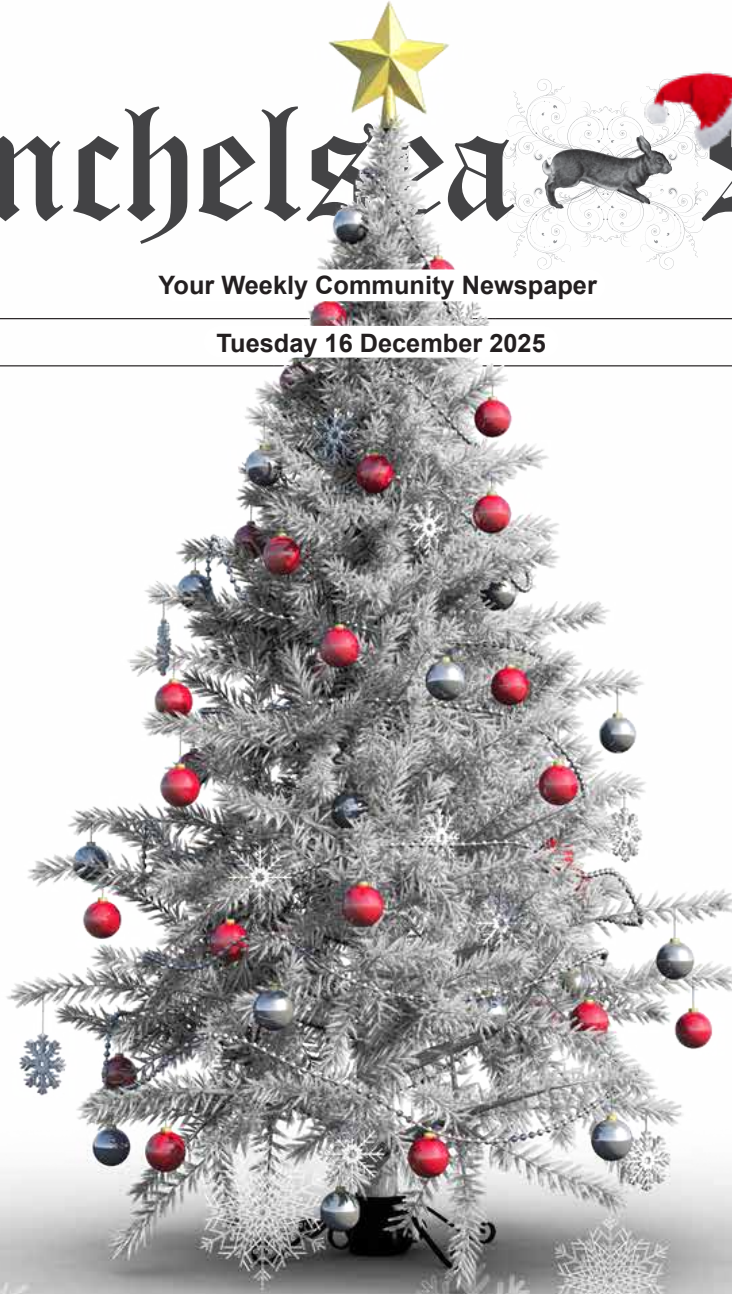
Your Weekly Community Newspaper

Since 1977

Vol 48 Ed49

Tuesday 16 December 2025

winchelseastar.org.au



Merry Christmas

Last edition of the year!

(first edition for 2026 is Tuesday 13 January)

**The Winchelsea Star volunteer crew wishes everyone a
Merry Christmas and a Happy New Year**

Last Chance to Win, Don't Miss Out

The elves are loving their time in Winchelsea, but Christmas is almost here, and they'll be returning to the North Pole on the 19th of December to join Santa as he stacks the sleigh for Christmas eve.

That means it's your last chance to complete the Elf Treasure Hunt and go into the draw to win amazing Christmas prizes, including passes to the Winchelsea Swimming Pool and movie passes to visit a film of your choice during the holidays. Make sure you all come along to the family BBQ at the "Mud Hut" on the 21st of December.

Make sure you have:

- Collected your Christmas passport from the Winchelsea Community Bank
- Visited the local shops and businesses where the elves are hiding.
- Found each Elf, recorded their name on your passport and have your passport stamped at each location.
- Returned your completed entry form to the Christmas Competition Box at the Winchelsea Community Bank.

You don't want to miss out on this magical town adventure. The elves have been having a blast meeting all of the kids and spreading Christmas cheer and they will remember your visit forever.

A note to parents: This is a great way to explore local shops and businesses and enjoy some festive fun with the family. Don't forget your camera, you might be able to get an Elf selfie and upload it to the Growing Winchelsea facebook page.

Lets give the elves a wonderful Winchelsea send off. Happy hunting and Merry Christmas to all from Growing Winchelsea.



Stitch it don't Ditch it

by Annette Rennie

Once again we had two sewing machines working, the child's dress cut out last week is starting to come together and will be a lovely cool outfit for a little one once it's finished. A large cushion cover has been finished, made from two gorgeous pieces of material from our donated stash.

This was the last day for Stitch it Don't Ditch it for this year but will begin again, with extended hours on the 4th of February 2026.

Put aside all your textile repair jobs to bring along and give them a new lease of life!



Christmas in Winchelsea – Community Celebrations & Reminders of Key Dates

Winchelsea is buzzing with festive cheer as Christmas in Winchelsea events reach their brightest and busiest weeks. Locals and visitors are invited to join in, celebrate community spirit, and support the many activities lighting up our town.

People's Choice Award – Voting has closed!

The public voted for their favourite Christmas tree. Every vote celebrates the creativity and heart our community puts into making Winchelsea shine.

Hidden Elf on the Shelf Christmas Trail – Closes 18 December

Families are loving this festive treasure hunt, with fantastic summer holiday prizes up for grabs. Pick up a passport from the Community Bank Winchelsea & District to find out which local businesses are hosting those cheeky elves. Children are encouraged to bring an adult along—our elves are known for mischief!

Twinkle Trees Judging – Happening Soon

Entrants are encouraged to check their tree ahead of judging to make sure they are perfect! The town is looking magical, positive feedback from visitors has been overwhelming and anticipation is building.



Christmas Lights Competition – Closes 17 December 2025

To enter, contact Elaine Atkinson on 0458 009 616 or download a form at www.growingwinchelsea.com. Homes across Winchelsea look spectacular—families are encouraged to enjoy an evening drive and soak up the joy and creativity on display.

Community BBQ – Sunday 21 December 2025, 1pm at the Mud Hut

A relaxed afternoon for all ages, celebrating our sponsors, supporters and announcing competition winners. Bring chairs and blankets, enjoy the nearby swimming pool or adventure playground and be entertained by Nic Dacomb of Krazy Koala—better known as Nicholas Ridiculous—whose circus fun and catchy songs delight kids every year. A surprise visit from Santa is possible too!

Special thanks go to major sponsors Winchelsea Star and Surf Coast Shire in collaboration with Growing Winchelsea for helping the town sparkle.

Join us in celebrating community, creativity, and the festive spirit that makes Winchelsea truly special.

For further information contact:
Elaine Atkinson
0458009616
eatkinson048@gmail.com



Let's get festive!

Share the Surf Coast Spirit



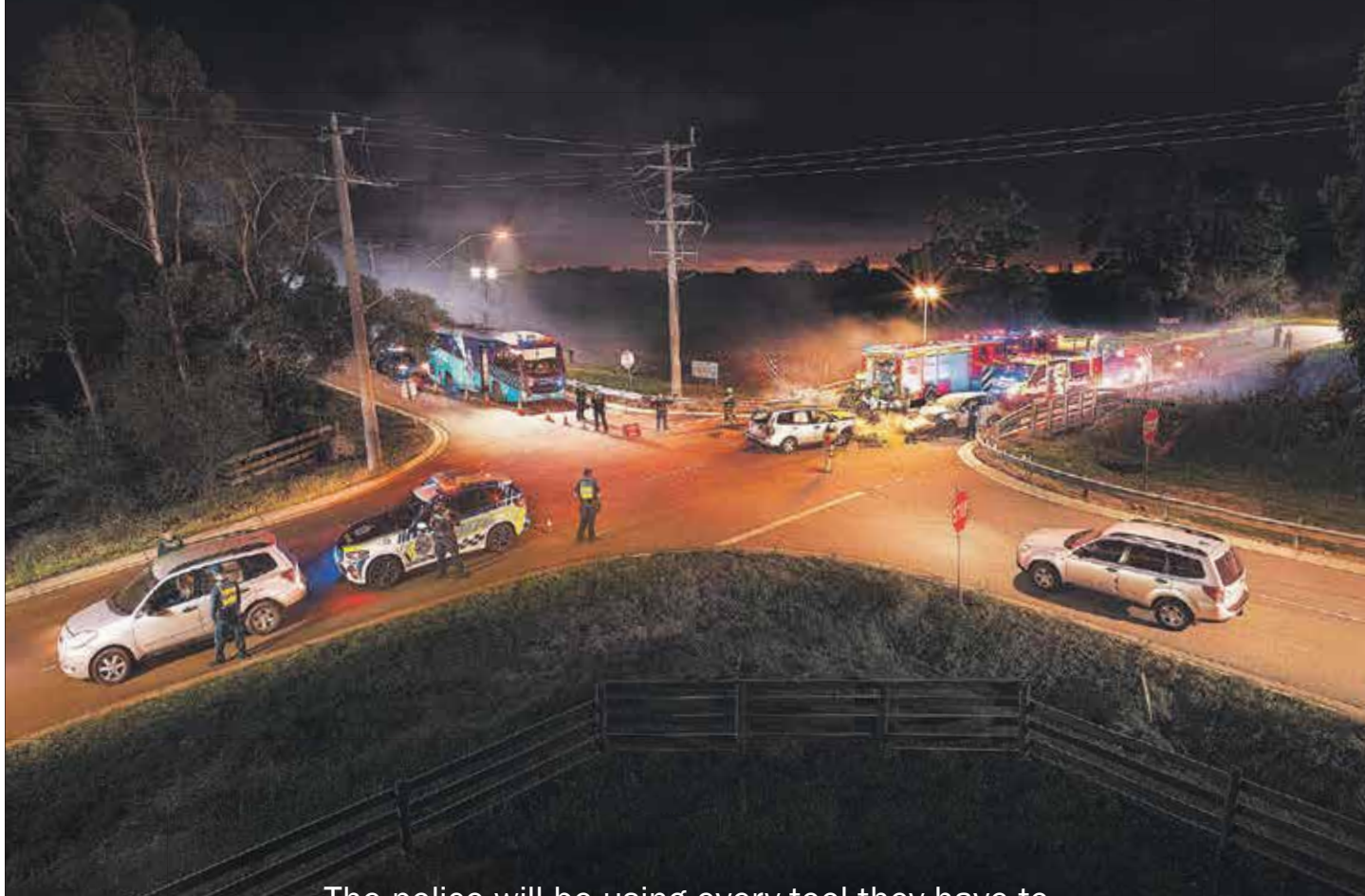
Changes to our Torquay Council office opening hours:

- Closes 4pm Wednesday 24 December. Reopens 8.30am Monday 29 December.
- Closes 4pm Wednesday 31 December. Reopens 8.30am Friday 2 January.





Drink driving? Wrong choice.



The police will be using every tool they have to keep the roads safe. But if you decide to drink then drive, how your holiday ends is your choice.

TAC

VICTORIA
State Government



The Monthly Sunday Market Was Busy Last Week

by Judy Cameron

The Winchelsea CFA were there providing information and advice on preparation for the coming fire season and showing off their shiny new truck.

Their Number Two truck needs replacing so they will be fundraising and seeking donations. Stay tuned!



The Men's Shed were getting takers for their timber Christmas trees. No doubt you have seen them popping up along the highway! To get yours for a mere \$20 and turn these 'blanks' into a work of art for your front yard contact Ray on 0407839139 to arrange pickup.



Meet local resident Perlita who has cleverly designed an attractive non-petroleum based fire starter. These could be useful (and unusual!) Christmas gift for someone you know. Call Perlita on 0417553929 to buy some.

Winchelsea Men's Shed Offers More Timber Christmas Trees After Sell-Out Success

Following overwhelming community demand and a complete sell-out at the recent Winchelsea Christmas Market, the Winchelsea Men's Shed has crafted a new batch of beautifully made timber Christmas trees—ready for local homes and gardens to enjoy for **just \$20 each**.

These handcrafted trees have already become a festive favourite, popping up in gardens across Winchelsea and helping create a warm, twinkling Christmas atmosphere throughout the town.

Celebrating the Men's Shed and Their Community Spirit

The Winchelsea Men's Shed continues to be a vibrant hub of creativity, companionship, and community service. This year, members proudly produced 50 "Twinkle Trees" that now line Main Street, bringing colour and festive spirit

to the heart of town. Their dedication, skill, and generosity showcase the Shed's ongoing commitment to supporting the community through practical projects and social connection.



Get Your Timber Christmas Tree

Residents can pick up their own timber Christmas tree by dropping into the Winchelsea Men's Shed next Wednesday, or by arranging a collection directly with Coordinator Ray Atkinson on 0407 839 139.

These trees are limited in number and expected to sell quickly again—don't miss your chance to bring a handcrafted piece of festive cheer to your home.



Winchelsea Star

send your stories

news@winchelseastar.org.au

**LOCAL NEWS
and ARTICLES
WELCOME**

Email news@winchelseastar.org.au OR
Leave hard copy at IGA Supermarket

news deadline

5pm Fridays

4pm Sundays - hard copy left at IGA

6pm Sundays - sports results and
weekend events

EDITOR 5273 0295

Leave a message

ADVERTISING 5273 0294

advertising@winchelseastar.org.au

free online subscription

www.winchelseastar.org.au

facebook.com/TheWinchelseaStar



NATURAL GAS CONNECTIONS

**M. & L DRAYTON
PLUMBING SERVICES**

YOUR LOCAL LICENSED

- PLUMBERS (24356)
- GAS FITTERS
- GAS CONVERTERS
- CARBON MONOXIDE TESTING

MARK 0428 520 142

SIMCO
PLUMBING SERVICE
Domestic - Commercial - Rural

0400 643 976

- All general Plumbing and Gasfitting • Water tanks and Pumps
- Renovations and Extensions • Hot water and Heat pump
- Split system and Wood heaters • Roof and Gutter
- Septic and Treatment plants • Excavation, Bobcat and Tipper
- Driveways and Earthworks
- Blocked drains and CCTV Inspection

Simon McGillivray

Lic: 109610 Free Quotes, Fast & Friendly Service

Fire Danger Period **NOW**

Country Fire Authority

The Fire Danger Period is when CFA restricts the use of fire in the community.
This is to help prevent fires from starting.

The Fire Danger Period is NOT the same thing as a Total Fire Ban.

Your local council or shire may have their own local laws about lighting fires. Contact your local council to find out what municipal local laws may be in place. Local laws may be in place all year

Municipality	Start Date	End Date
SURF COAST	24/11/2025	01/05/2026

If you need to use fire in the open air during the Fire Danger Period or on a day of Total Fire Ban you may require a permit.

Find the rules at: <https://www.cfa.vic.gov.au/warnings-restrictions/fire-permits/about-fire-permits>

Green Lead Electrical
Connecting you to a greener future
REC 29018
0467 097 101



**Servicing Geelong &
the Surf Coast**

**Specialising in all residential
electrical work including:**

- Switch board & lighting upgrades
- Outdoor lighting
- Electrical safety checks
- Energy efficient LED lighting
- Ceiling sweep fans & ventilation
- Energy saving advice

Phone Martin Wilkinson:

0467 097 101

greenlead@outlook.com

1132268-CG18-14

**Chat with your
Councillor**

**Tony
Phelps**

**1st Thursday of the month
10am-12pm**

**Winchelsea Shire Hall
co-working/study space**



Wensleydale Rural Community Group's Christmas Farm Gate Competition

By Rhani Bayon

The Wensleydale Rural Community Group has hosted a Christmas farm gate competition. Property owners from across Wensleydale, Gherang and Wurdibuloc were invited to decorate their Farm gate or fence in Christmas décor.

Wendy - Winch House Manager and I were invited to judge the displays across four categories, Creativity, Effort, Christmas Spirit and Community Appeal.

We really enjoyed a tour through the area with our knowledgeable guide Chris Trotter – Chairperson of the Wensleydale Rural Community Group who shared with us a little about the history and land use of the properties we passed.

We weren't entirely sure what to expect but what we found down dirt roads, deep in farm and house country and surrounded by patches of remnant bush, were some very thoughtfully and creatively decorated farm gates and fences in the spirit of Christmas.

Some clever people built installations from logs and re-purposed steel, sticks and native flowers while others thread Christmas lights in intricate patterns.

Wendy and I compared varying scores across the categories for each of the 10 entrants but did not disagree on the winner – Alison of Dangers road, whose farm gate was a dazzling pop of colour as we pulled up. Alison used all recycled materials, delicately hand painted fabric bunting and two men's shed trees.

FIRST PRIZE: Alison - Dangers Road, Gherang

'All decorations are hand sewn and painted by me using old bedding, fabric and tablecloths from home. I bought two pallet xmas trees from the new Moriac men's shed and painted them up with stain and paint from the shed. All lights are solar and from left over party supplies. And the best thing is they can all be packed away and reused next year.' - Alison



SECOND PRIZE: Victoria - Prices Road, Gherang

Judges notes – 'Top points for originality, the more you look, the more you see!'



EQUAL THIRD PRIZE:

Stephen, Sam & Eileen - Gherang rd, Gherang

Judges notes – 'Very impressed by the hand- made wreath using native flowers in Christmas colours.'

Maree - Kelly's Lane Gherang

Judges notes: 'Humorous, personalised and definite community appeal'



Lupton BUILDERS

SPECIALISING IN QUALITY



REGISTERED
Building Practitioner

- NEW HOMES
- EXTENSIONS
- RENOVATIONS
- ALTERATIONS
- DECKS
- PERGOLAS
- CARPORTS
- VERANDAHS
- RE-GLADS
- BATHROOMS
- WINDOW REPLACEMENTS

Leigh Lupton
0438 840 104

LEIGHLUPTON17@GMAIL.COM

Est. 1977



STS
ACCOUNTING
GROUP

Need tax advice...?

Business & SMSF Tax Planning Specialists

Winchelsea Torquay
5267 2673 5261 2262
surftax.com.au

Winchelsea Taxis is now Surfcoast Taxis

Our fleet of vehicles are growing to all late models and we are covering an extended area including Winchelsea, Colac, Bannockburn, Inverleigh, Great Ocean Road and Geelong.

We have a fleet of 10 seater Maxi Vans, all with capacity to carry wheelchairs.

Surfcoast Taxis Pty Ltd
All Bookings: 0408 325 992
Fax: 5267 2699
Email: bannotaxis@gmail.com
(Admin or Stan 0429 672 888)
66A Batson Street
Winchelsea 3241



Accounts NDIS provider. TAC, DVA etc

NDIS provider number 4050001044
NDIS provider number 4050001048



Winchelsea Community Market

First Sunday on the Month (except November)



Shire Hall
9am to 1pm

Upcoming Dates:
Jan 4
Feb 1

Food, Produce, Coffee, Plants, Crafts
Homewares, Candles, Bags, Skincare
Jewellery, Soap + Baby Goods

Stallholders - Contact via Growing Winchelsea Inc Website
(Scroll Down to Market)



Moriac Veterinary Clinic
0447 781 089
PHONE 24 HOURS
784 Hendy Main Road Moriac
info@moriacvet.com
www.moriacvetclinic.com.au
HOURS // Monday - Friday: 8am - 5pm



Winchelsea Dental Practice

NEW OPENING HOURS

8am - 6.30pm Monday & Tuesday
8.30am - 6.30pm Wednesday
8.30am - 5pm Thursday
(Friday emergencies call 5267 2071)

Find us at 21 Hesse St
Call 5267 2071 or book online
www.winchelseadental.com.au

• Domestic and Commercial hire equipment • Industrial welding gas
• Digging and Earthmoving equipment • New trailers and trailer repairs
• Firewood • Stockists of Royal Oil Lubricants products
• LPG for domestic and commercial requirements
Give Chris and the Team a call on 5232 1177 or email info@colachire.com.au
www.colachire.com.au
101 Wallace St Colac 3250



From Overwhelmed to Empowered: How HIPPY Change My Family's Story

By Rebecca McCulloch (HIPPY Parent/Mentor)

“HIPPY isn't just about school readiness. It's about empowering families, building relationships, and making learning fun.”

When I first heard about HIPPY, I wasn't sure it was for me. Life felt overwhelming, and adding something new seemed impossible. But I decided to give it a try. I'm so glad I did.

HIPPY became more than a program. It became a lifeline.

The activities were flexible and fun, and they helped me see my child's strengths instead of focusing on challenges. Through the “everywhere learning” approach I was able to adapt activities to suit Tamryn. I was focusing on the learning area and her progress, rather than the completion of a task. Suddenly, learning wasn't limited by time or place; it could happen anywhere, in everyday moments.

The support from my mentor was incredible. Every visit reminded me that I wasn't alone and that I could be my child's first teacher. HIPPY gave me tools, confidence, and a sense of connection. It wasn't about what Tamryn couldn't do. It was about celebrating what she could do!

By the end of our first year, I could see how we had both grown. I felt so inspired that I applied to become a HIPPY mentor myself. I wondered if I could really go from parent to mentor, but I took the leap, and it's been the best decision I've ever made.

Now, I get to share what I've learned with other families. Watching parents grow in confidence and seeing children thrive is the most rewarding part of my job. The families I work with are growing every day in confidence and understanding their children's strengths and challenges. I'm proud I took this step, for myself, my kids, and the families I support.

HIPPY isn't just about school readiness. It's about empowering families, building relationships, and making learning fun. I'm proud to be part of something that makes such a difference.



Rebecca and Tamryn McCulloch celebrating completion of the two-year HIPPY program together.



Tamryn McCulloch with HIPPY Surf Coast's Twinkle Tree displayed on Winchelsea's main street. Pinecone decorations made by HIPPY children.

Want to learn more about HIPPY? Have a child (or grandchild!) starting Age 3 Kindergarten next year?

Visit <https://www.meli.org.au/hippy/>

Don't Throw Away Those Envelopes With Stamps!

Jeanette McConachy collects used stamps for the Uniting Church Stamp Fund, better known as Sammy Stamp, which coordinates the collection and sale of stamps to fundraise for good works.

Past projects supported by Sammy Stamp funds include overseas microfinance programs, clean water projects in South India and Papua New Guinea, appeals for natural disasters such as the Haiti earthquake and the Pakistan floods.

In 2019, Sammy Stamp reached a major milestone by exceeding \$1 million from stamp sales since it began in 1977!

So as your Christmas cards arrive, and other mail with postage stamps attached, save those envelopes and drop off at 5 Stephenson St, Winchelsea. Jeanette will then carefully cut around the stamps in the way the buyers of used stamps require.

PS: Jeanette would welcome volunteers to help her trim stamps!



Twinkle Twinkle Little... Tree!

Everyone has seen the Twinkle Trees by now, lining both sides of Main St like an Avenue of Honour. They're a fantastic initiative, so much better than the commercial Christmas decorations that councils typically overspend on. Instead of something soulless and impersonal, manufactured where everything is made, each Twinkle Tree has been hand made and decorated by local hands, showcasing our community creativity.

Each tree is a work of art, unique. I only wish there was enough room in this column to fit in a photo of each of them! This collaboration between Growing Winchelsea and the Winchelsea Men's Shed is giving our town an individual aesthetic as we prepare to welcome Baby Jesus this year.

Well done to everyone who took part, they are so pretty!
Elaine Atkinson of Growing Winchelsea will now explain a little more about how they came to be.

Ciao!



"Twinkle Trees on Main began as a simple idea about connection and celebration, but soon grew into something far more powerful—a celebration of imagination, family, and the magic that blooms when a community creates together.

Crafted by the skilled hands of the Winchelsea Men's Shed, the timber trees were shared throughout the town with an open invitation: decorate them in any style, any medium, any colour that spoke to the heart. Supported by Community Bank Winchelsea & District and brought to life in collaboration with Growing Winchelsea, the project quickly became a canvas for all ages.

Parents and grandparents listened—really listened—as young voices shared visions that were whimsical, wild, and wonderfully original. In those moments, generations blended. A grandparent's steady hand helped position the lights; a parent's laughter echoed as paint scattered everywhere; a child's delight sparked new ideas no one had imagined. The diversity of the decorated trees reflected the diversity of the families themselves. Some trees glowed in soft pastels, others dazzled with neon brilliance; some told stories of heritage and the land, one choose to feature their treasured Pokémons, others whispered fantasies invented on the spot.

When the decorated trees finally lined Main Street, they formed a sparkling forest of community spirit. Each tree stood as a reminder that art is not a skill reserved for a few but—accessible, shared, and joyfully imperfect—has the power to lift spirits, strengthen connections, bring a town closer, and bridges generations, one creative moment at a time."

Register your child for Auskick today to receive your pack in time for Christmas!

GIVE THE GIFT OF FOOTY FUN

PLAY AFL/AUSKICK



**+Bringing Joy to Families in the Surf Coast Shire
Spread Christmas Cheer - Help a Family in Need**

How You Can Help

We're calling on our amazing Surf Coast community to make this Christmas unforgettable. Donations of gifts or essential items can bring smiles to the faces of local children.

Gift Suggestions

We welcome gifts for children aged newborn to 18 years. Consider donating:

- Toys & Games: Board games, Lego, beach toys, balls, puzzles
- Gift Vouchers (Mecca, Rebel, JB Hi-Fi, Bounce, Live Wire Park)
- Books (all ages)
- Art Supplies: Craft kits, drawing sets
- Beach Gear: Towels, hats, sunglasses
- Personal Care: Perfume, cologne, skincare packs, deodorant sets
- Chocolates/Stockings
- Fashion: Backpacks, water bottles, socks, jewellery, make-up packs
- Please include wrapping supplies so families can wrap gifts themselves.



*Together, Let's Spread
Christmas Magic!*

Bendigo Bank

**Community Bank
Surf Coast**

Drop off points
Community Bank Winchelsea
11 Main Street Winchelsea

Community Bank Anglesea
65 Great Ocean Road Anglesea

Community Bank Lorne
1/32 Mountjoy Parade Lorne

**If you or someone you know could
use support this Christmas**

Ph: Liza 0431204 875

Email: adoptasurfcoaster2025@gmail.com

Adopt A Surfcoaster - Christmas 2025

This service discreet, confidential, and anonymous.



YOU CAN'T CONTROL FIRE, BUT YOU CAN PREPARE FOR IT.

The best way to keep you and your loved ones safe this fire season, is to make sure you have a fire plan.



Go to fireplanner.vic.gov.au to create your personalised fire plan now.

HOW WELL DO YOU KNOW FIRE?

Authorised by the Victorian Government, 1 Treasury Place, Melbourne





The Climate Report

Compiled by Judy Cameron

Climate change is affecting your food – and not in your favour

Author: Sterre ter Haar - PhD researcher and lecturer, Industrial Ecology Department of the Institute of Environmental Sciences (CML), Leiden University

Scientists thought they had finally stumbled upon a possibly positive side effect of climate change. While rising CO₂ levels have been linked to various effects, from rising sea levels to changing temperatures, could an increase in CO₂ also be good for something? Plants use carbon dioxide and sunlight for photosynthesis, so more CO₂ could theoretically mean more food.

It sounds almost too good to be true, but science backs part of this up. Plants do grow faster when CO₂ levels increase, but this doesn't mean we will have more food and less hunger. Other research has shown that where we can grow our food is not only shifting, but also shrinking.

Changing weather patterns and extreme weather events, such as heat waves, drought, or extreme rainfall, will become more frequent and limit our global food production.

So increasing CO₂ might be good for how fast a plant grows and not so good for where it grows, but what about the effect on the plant itself? The majority of our diets come from crops or from animals that eat (mostly) plants. If plants respond to rising CO₂ levels, that could mean their nutritional value is also changing.

My new analysis with colleagues shows an interesting picture: each bite of food is becoming comparatively higher in calories but lower in nutrients. We compiled 59,048 measurements from 109 studies and compared results at a baseline of 350 ppm of atmospheric carbon dioxide to an elevated level of 550 ppm.

We looked at 32 nutrients across 43 different crops. For the first time, we could see a clear shift in plant composition across a wide range of species and essential nutrients.

As carbon dioxide increases, so does carbon uptake, and more carbon means more carbohydrates, like sugars and starch. However, critical nutrients such as iron, zinc, and protein all decreased. Our food might have more carbs but fewer essential nutrients. While the average decrease in nutrition was only a few percent, certain foods saw large decreases, such as a 38% zinc reduction in chickpeas.

What also stood out were heavy metals such as lead. They might be increasing in our food – a serious concern because lead is toxic even at very low levels and can harm the brain, heart, and nervous system – but that's not something we can say for sure based on our study.

We might need to reconsider what a healthy diet looks like in the coming decades. Food security will not necessarily imply nutrient security. A healthy diet today might contain too few nutrients in the future due to the shifting composition of our crops, despite still containing enough calories.

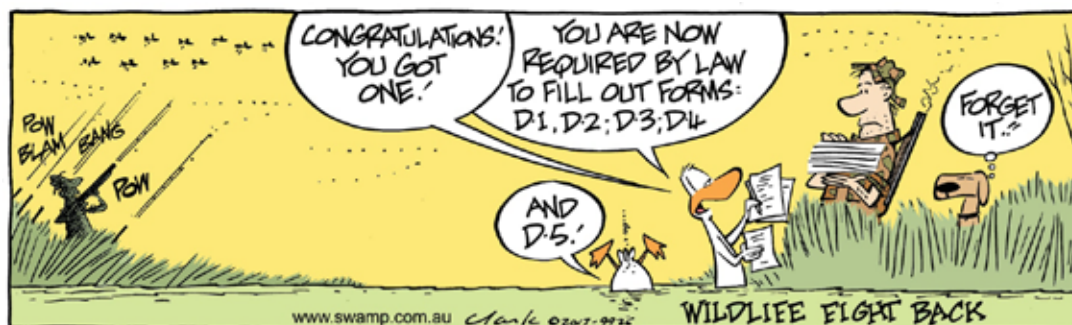
If our food is becoming more calorific for relatively fewer nutrients, in extreme

cases, we could see increases in both average body mass and undernutrition. Scientists are now looking at what this means for our diets, but in the meantime, a good way to buffer these potential effects would be to eat a diverse diet.

Climate change feels like a faraway problem, but it's already here. A substantial part of our increasing food prices has already been linked to climate change. Certain foods are getting harder to obtain. Weather disasters alone accounted for \$20.3 billion in damage to American farmers last year.

Our study looked at the effect of increasing CO₂ from 350 ppm, which is sometimes referred to as the last "safe" level for humans, to 550 ppm. We are currently at around 426 ppm, putting us almost halfway through the modelled effects. Climate change is happening now, and the effects are already on our dinner plates.

FULL STORY: https://theconversation.com/climate-change-is-affecting-your-food-and-not-in-your-favour-270323?utm_medium=article_native_share&utm_source=theconversation.com



Used with permission of Gary Clark, Swamp Cartoons
Cartoon Books available online: swamp.com.au

Community Shines at Carols by the Barwon Despite Stormy Start

The Winchelsea community came together on Saturday evening for Carols by the Barwon, transforming a blustery, rain-threatened afternoon into a joyful night of music, food and festive spirit.

Set-up began at 1:30 pm with vital assistance from the SES, Winchelsea Lions, and the Carols Planning Committee. Despite darkening skies, strong winds and a burst of rain at 3 pm, the decision was made to proceed—and by 5 pm the skies had cleared, welcoming families arriving with blankets, prams, chairs and festive excitement.

Food vans lined the Bluestone Bridge, offering a diverse range of cuisines. After a slow start, trade surged from 5:30 pm, with many vendors selling out thanks to the strong community turnout.

Entertainment commenced at 6 pm with delightful performances from Mainly Music, followed by the energetic Mel's Dance Troupe, Winchelsea Primary School with their charming rendition of I Want a Hippopotamus for Christmas, and the Girl Guides. Local carollers then led the crowd through

much-loved Christmas classics, managing well despite breezy conditions and enthusiastic children.

The Colac City Band continued the festive atmosphere—until the sound of a siren signalled the arrival of the night's most anticipated guest. Santa, travelling aboard an SES truck, was instantly surrounded by excited children eager to greet him, creating a magical and memorable finale.

The Carols Committee extends heartfelt thanks to the SES and Winchelsea Lions for their support with set-up and pack-down, and to the many sponsors whose generosity made the event possible. Special appreciation goes to Winchelsea Concreting, Winchelsea Tavern, Barwon Water and One Body Chiropractic for funding the evening's entertainment, and to Winchelsea Wholefoods, The Vault, Terry White Chemist and Winchelsea Tavern for donating prizes. Also those businesses who supported in the lead up and at the event - Hayeswinckle, Nogueira Photography, IGA Pharmacy, Community House Community Bank Winchelsea & District and Growing Winchelsea.

A special thank-you goes to Winchelsea Star, our major sponsor, and to Surf Coast Shire for their ongoing support and financial commitment in helping make Christmas in Winchelsea a time to sparkle.

Elaine Atkinson
Carols Planning Committee member + promotions



Other members include:

- Rob Davies + MC on the night
- Megan Morris + Site Manager
- Elizabeth Bennett + Volunteer Coordinator
- Judy Staples + Entertainment Coordinator
- Kim Johnson + Stallholder Coordinator
- Yvonne Orchard, past organiser providing advice



Services & Activities In Winchelsea

VLINe TRAIN SERVICES

TO MELBOURNE:

Mon - Fri 06.41 (coach) 08.07 11.10
14.04 16.58 19.21

Sat - Sun 08.27 10.27 14.04 16.58
19.17

TO WARRNAMBOOL:

Mon - Fri 08.58 11.51 14.46 17.28
(coach) 18.42 20.52

Sat - Sun 09.44 11.41 14.46 18.38
20.38

SURF COAST MOBILE LIBRARY

Cnr Princes Highway & Hesse St,
Fridays, 2pm-5pm

Parked in Hesse Street
(outside Shire Hall)
Fridays 2:00 and 5:00pm
unless it is a Public Holiday.

WINCHELSEA GIRL GUIDES

All girls 6yrs-15yrs Welcome!
..ondays 4.30pm-6pm (school terms)
Catholic Church Hall, Harding St Winchelsea

*Fun, friendship, and adventure. Teamwork,
leadership skills, achieve goals, improve
communities and grow in confidence.*

3 FREE sessions to come along and try.
Yvonne 0448 672 630 or
Lily 0428 936 441



COUNTRY WOMEN'S ASSOCIATION

7pm second Wednesday of month
Winchelsea Senior Citizens' Hall
36 Harding Street Winchelsea

WINCHELSEA PLAYGROUP

Every second Thursday 10am-12pm
St Thomas Anglican Church Hall
cnr Barwon Tce and Hopkins St,
Winchelsea

Contact: Danni Menzies 0432019944
winchelseaplaygroup@gmail.com
Facebook - Winchelsea Playgroup 2019
New families welcome



1st Modda & 1st Winch SCOUT GROUP

Joeys: Tues 5-6pm (school terms)
Cubs: Mon 6:30-8pm (school terms)
Scouts: Tues 6:30-8:30pm (school terms)
Venturers: Weds
Modewarre Hall, Cape Otway Rd
Venturers: Walton's Rd Venturer Den
Contact Marie McPadden 0409 330147



Winchelsea and District COMBINED PROBUS CLUB

Senior Citizens Rooms,
New members always welcome.
Enquiries Lorraine 0417 467 927

WINCHELSEA TRANSFER STATION

55 Cressy Road, Winchelsea

Tuesday 2pm-4pm
Saturday 1.30-3.30pm
Thursday 2pm-4pm
Sunday 9.30-12.30pm

Closed Christmas Day,
but open on other public holidays.
www.surfcoast.vic.gov.au/disposalsites

Join us. A role for everyone



Nationally accredited training to help our community.
Pop in to meet your crew **Wednesdays 7:30pm**

Winchelsea Unit 225 Mousley Drive **132 500**

All About **Mowers & Chainsaws**

Repairs to all makes and models of ride on mowers, domestic mowers, pumps, chainsaws, brushcutters and small engines.

Trading Hours: Mon - Fri 8am - 5pm Saturday 8am - 12 noon

5267 2266 Cnr Princes Hwy & Lennox St Winchelsea

www.allaboutmowers.com.au
accounts@allaboutmowers.com.au

FERRIS COX STIHL BRIGGS & STRATTON VICTA

RICHARDSONS

5234 6585 0417 385 984

For all your septic tank, grease traps
and interceptor pits servicing.
Locally owned and operated

RICHARDSONS

5234 6585 0417 385 984

For all your domestic & stock water.
Also available for road and civil construction
Local owned and operated.

SOUTHERN GRAIN STORAGE PTY. LTD.

AG SUPPLIES FERTILISER GRAIN STORAGE SEED CLEANING

(03) 5267 2351

Café La Hoot

have you tried
'owl' coffee?

1 willis st cafelahooot@gmail.com 0407 528 999



Winchelsea Star COMMUNITY NOTICEBOARD

email editor@winchelseastar.org.au or
leave a note at **Winchelsea IGA**

1ST MODEWARRE SCOUT GROUP

Next year we have Cuboree for Cubs in Sept, then Jamboree for Scouts Jan 2027
Marie McPadden Group Leader
1st Modewarre Scout Group 0409 330 147



**Experienced GARDENER
required to assist in
Winchelsea farm garden
1 day per fortnight
Own ABN
& insurance required
PH: 0404 236 059**

WANTED: UKULELES

Winch House is looking for unwanted ukuleles to support a coming course "Intro to Ukulele".

If you should have an unloved Uke at home and wish to donate it pls drop off at Winch House or ph 0408502611 to arrange collection.

Thank you

WINCHELSEA PICKLEBALL

The Tennis Club is running Pickleball every Wednesday 7pm at the Winchelsea Leisure Time Centre!

Only \$5 a person
All equipment supplied
Wear suitable footwear
Lesley Mathison 0438 672 197

WINCHELSEA TENNIS CLUB

JUNIOR COACHING Mon 3.30pm
with experienced Nicole Mullen \$10

WINCHELSEA OP SHOP

Quality clothing and homewares.
10 Willis Street, Winchelsea Vic 3241

WINCHELSEA LIONS CLUB

Large bags of pine cones for fire pits \$5
Lions Club Christmas cakes
Available now.
Contact Ray 0406 371 239



Know The Rules And Help Keep Kids Safe Around Pools And Spas

Thinking of buying a pool or spa for Christmas?

Surf Coast Shire Council is wishing people well for summer fun in the water, while sharing an important message about keeping families and friends safe.

Victorian Government legislation requires residential pools and spas to be registered with Council by owners, and this can apply to pools and spas purchased online or from hardware stores.

Even inflatable and portable pools may be required to have safety barriers.

"This is a potentially life-saving message," Deputy Mayor Tony Phelps said.

"It is so important that people are aware of the safety regulations and legislative obligations which come with the great responsibility of owning a residential pool or spa.

"Pools and spas need to be registered with Council, and have safety barriers installed. The barriers need to be inspected every four years by a private inspector, and compliance certificates also lodged with Council.

"Concerns about the safety of residential pools and spas have escalated with their increased availability online and from

hardware stores. They can be bought and sold without any guidance on safety, Victorian Government requirements for registration, or about having compliant barriers.

"These regulations are in place for a reason – to help keep kids and families safe."

Inflatable and temporary pools and spas capable of containing more than 300mm in depth, and in place for more than 72 hours, are subject to the same barrier and registration requirements as permanent pools.

People can find more information about pool registrations and barrier certifications via surfcoast.vic.gov.au/PoolsSpas or by phoning Council on 5261 0600.



What's on Weekly

MONDAY-FRIDAY

WINCHELSEA COMMUNITY HOUSE

9am-2pm, 28 Hesse St, Winchelsea
(03) 5267 2028

WINCHELSEA TOY LIBRARY

9am-2pm (03) 5267 2028
Winch Community House,
28 Hesse St, Winchelsea

MONDAY-SATURDAY

WINCHELSEA HEALTH CLUB

Accessible - 24 hours
Eastern Reserve, 70 Hopkins St
5267 2336

MONDAY

SURF COAST SHIRE FIRE DANGER PERIOD

24/11/2025 - 01/05/2026

GROWING WINCHELSEA WINCHELSEA ELF ON THE SHELF

5-18 December 2025
growingwinchelsea.org

CO-WORKING & STUDYING SPACE

Mon and Thurs 9am-2pm \$10
Winchelsea Community House
28 Hesse St, Winchelsea
(03) 5267 2028

MAINLY MUSIC

10-11am (school terms)
Interactive Music 0-4yrs
St Thomas' 25 Barwon Tce 0407838256

WINCHELSEA GIRL GUIDES



4.30pm-6pm (School term)
St John's, Mercer /Harding St
Yvonne Orchard 0448 672 630
Lily Dell Rennie 0428 936 441

1ST MODDA/ 1ST WINCH SCOUTS



Cubs: 6:30-8pm (School term)
Modewarre Hall, Cape Otway Rd
Marie McPadden 0409 330147

VINYASA YOGA

7pm \$25 Winchelsea Shire Hall,
28 Hesse St, Winchelsea
(03) 5267 2028

TUESDAY



Senior Citizens Centre,
36 Harding St, Winchelsea
Elaine Atkinson 0458 009 616

1ST MODDA/ 1ST WINCH SCOUTS



Joeys: 5-6pm (School term)
Scouts: 6:30-8:30pm (School term)
Modewarre Hall, Cape Otway Rd
Marie McPadden 0409 330147

WEDNESDAY

WINCH WALKERS

9:30-10.30am
Mud Hut (Opposite La Hoot Cafe)
Barwon Terrace, Winchelsea
ralexander@hesse.vic.gov.au

WINCHELSEA ZUMBA DANCE

Combined Zumba Fitness and Gold class.
6:30-7:30pm @The Globe Theatre.
Simone Dunmore: 0468 375 036

WINCHELSEA MEN'S SHED

9.30am 51 Hesse St, Winchelsea
Ray Atkinson 0407839139
winchmenshed@gmail.com

SENIOR CITIZENS CENTRE

Wednesdays 1- 3.00 pm
36 Harding St, Winchelsea
Jean Shinnars 52672263, 0427672263
jeanshinnars@gmail.com

MOTHER GOOSE SONG & RHYME

2pm (School term) FREE
Winchelsea Community House,
28 Hesse St, Winchelsea

WINCHELSEA HISTORICAL SOCIETY

Wednesday 1-4:pm, Friday 10am-3pm
Hesse St, Winchelsea

STITCH IT, DON'T DITCH IT!

2-4pm Wednesdays from 12 Nov
Winch Community House, Hesse St
SEWING MACHINE \$ & OVERLOCKER
AVAILABLE
Gold Coin donation

KIDS ART & CRAFT SESSIONS

4-4.45pm fortnightly Age 5+
\$15 per session or \$60 term
Winchelsea Community House
28 Hesse St, Winchelsea 5267 2028

WINCHELSEA LIONS CHRISTMAS LIGHTS COMPETITION

Register by Wednesday 21 November
growingwinchelsea.com

MEL'S DANCE CENTRAL

Afternoons/evenings Pre-school - teens
Winch Senior Citizens Club
www.melsdancecentral.com.au

CWA WINCHELSEA

7-8.30pm 2nd Wed monthly
Senior Citizens, Harding St
winchelsea.cwa@gmail.com



SES WINCHELSEA

7.30pm 132500
323 Mousley Dr, Winchelsea



THURSDAY

CHAT WITH YOUR COUNCILLOR

10am-12pm First Thursday of month
Winchelsea Shire Hall 28 Hesse St,

COWORKING & STUDYING SPACE

9am-2pm \$10 5267 2028
Winch Community House, 28 Hesse St

WINCHELSEA PLAYGROUP

10am-12pm (School term) \$5
St Thomas Hall, 27 Barwon Tce
winchelseaplaygroup@gmail.com

WINCHELSEA PICKLEBALL

10-11.30am
Leisure Time Centre, Gosney St
Lesley Mathison 0438 672 197

WINCHELSEA KNITTING GROUP

10.30am-12pm FREE
Winchelsea Community House,
28 Hesse St, Winchelsea
(03) 5267 2028 (03) 5267 2028

MAT PILATES

6.45pm \$25 Winchelsea Shire Hall,
28 Hesse St, Winchelsea
(03) 5267 2028

WINCHELSEA MOVIE CLUB

7.30 (3rd Thurs each month)
Globe Theatre, Main St, Winchelsea
growingwinchelsea.com/project/winchelsea-movie-club/

FRIDAY

TAI CHI

9am-10am \$10 5267 2028
Winch Community House, 28 Hesse St

COMMUNITY FOODBANK

12-2pm 30 Hesse St, Winchelsea
0417 848 292

PHONICS WITH ROBOT REG

10.30am (1-3 yrs) 11.30am (3-5 yrs)
(School terms)
www.robotreg.com.au/pages/shae

CHATTY CAFÉ



10.30am-12.30pm, Gold Coin Donation
Winch Shire Hall, 28 Hesse St, Winchelsea
5267 2028

WINCHELSEA HISTORICAL SOCIETY

Friday 10am-3pm
Hesse St, Winchelsea

WINCHELSEA SENIOR CITIZENS

Fridays 1.00 pm - 3.00 pm
36 Harding Street, Winchelsea
Jean Shinnars 52672263, 0427672263
jeanshinnars@gmail.com

WINCHELSEA RSL

12.00 19 Dec
Winchelsea Men's Shed,
Hesse St, Winchelsea
David Loone 0488 165 109

GEELONG REGIONAL LIBRARY

(MOBILE) 2-5pm
Old Shire Hall, 28 Hesse Street
0408384331 (During scheduled stops)

SATURDAY

DAZ'S DEADLY DECEMBER CHALLENGE

Winchelsea Football Oval
9am on Saturday 13 December.

PARKRUN



8am Trebeck Reserve
Sussex St, Winchelsea
www.parkrun.com.au/trebeckreserve/

WINCHELSEA LIONS CLUB IGA BBQs

9 -12pm first Sat of month outside IGA.
Proceeds to IGA Community Chest.

WINCHELSEA POOL SEASON OPENS

12pm to 6pm daily
Sat 29 November - Mon 9 March

WINCHELSEA LAND AND RIVERCARE Working Bee Citizen Scientists



First Saturday of the month 9am
Meet at Guye Reserve, Barwon Terrace
Rod Atone 0428 549318
Stewart Mathison 0428 672054

WINCHELSEA STAR PRODUCTION/COFFEE MEETING

9-11am (Last Sat monthly)
La Hoot Cafe, Main Street
www.winchelseastar.org.au

WINCHELSEA CROCHET GROUP

1.30pm Every 2nd Saturday \$5
Winch Community House, 28 Hesse St,
Vee 0467 219 227

ST JOHN THE BAPTIST CATHOLIC CHURCH

Mass 6pm each week
Harding St, Winchelsea 0404598558

WINCHELSEA COMMUNITY DINNER

6.30pm last Sat monthly, except Nov/Dec
Hall, Harding St Winchelsea
Bring plate & gold coin donation if you can

SUNDAY

RUNNING GROUP

8am Meet at La Hoot,
Main Street Winchelsea



WINCHELSEA COMMUNITY MARKET

9-1pm, 1st Sunday monthly
Shire Hall car park, Main St Winch
growingwinchelsea.com/project/winchelsea-community-market/

WINCHELSEA UNITING CHURCH

Service 9.30am each week
Hesse St, Winchelsea 0475 777 301
uca.winchelsea@gmail.com

ST THOMAS' ANGLICAN CHURCH

10am each week
Barwon Tce, Winchelsea
0477 672 042,
stthomaswac@gmail.com



WINCHELSEA LIONS CLUB
In conjunction with
Winchelsea Primary School

TRAIN RIDES **PETTING ZOO** **FACE PAINTING**

**Are holding a
FREE PICNIC**

**At Winchelsea Primary School Grounds
SATURDAY 28TH FEBRUARY 2026
12 - 3PM**

For all children under 12 who reside in 3241
Must be accompanied by a responsible adult
This is a free picnic but you must have a ticket to receive your food


Enquiries: Alan 0476 475 422

CHUCK WAGON **COFFEE VAN**

Free Lions Club Picnic Coming

At the end of February, the Winchelsea Lions Club are hosting a free community picnic at the Winchelsea Primary School grounds

Below: At the RSL Christmas lunch on Friday our President Graham Kenafacke was honoured to accept a generous donation from Glenn at the Bottom Pub. Many thanks from all the members .

mainly music
est. 1991

**Fun, Interactive music sessions for
pre-school children (0-4 y.o.) and
parents/caregivers**

**When: Mondays from 10 to 11 am
(runs during school terms)**

**Where: St Thomas' Hall
25 Barwon Tce.**

To Enquire ring: 0407838256

WINCHELSEA MEN'S SHED
For the Community

NEW MEMBERS WELCOME
Every Wednesday from 9.30am
51 Hesse Street, Winchelsea

KINDLING/OFFCUTS \$7.00 bag
Pickup Wednesdays 9.30-2.30
For delivery, call Bill 0438 083 373

NESTING BOXES Birds/animals

NEED A JOB DONE?
Woodworking, Furniture Repairs
Call in Wednesdays to order

Ray Atkinson (Co-ordinator)
0407839139
winchmenshed@gmail.com



**WORPEL
CUSTOM
FURNITURE**

- BESPOKE TIMBER FURNITURE
- TIMBER VANITIES
- BARNDOORS
- KITCHEN, BATHROOM & WARDROBE JOINERY
- REPAIRS & RESTORATION

0439013145

worpelsam@yahoo.com.au

25A Alsop Drive Winchelsea



WEST GATE TUNNEL

West Gate Tunnel **opening soon**

The West Gate Tunnel offers a vital alternative to the West Gate Bridge. Drivers have more choices with new connections linking the West Gate Freeway to CityLink and Melbourne's CBD.

It will ease congestion on the West Gate Freeway and West Gate Bridge, so you can enjoy more of what Melbourne has to offer.

more ways to move

Find out how your journey could change at bigbuild.vic.gov.au



Authorised by the Victorian Government, 1 Treasury Place, Melbourne





Holiday bin collection changes, plus other important summer waste updates.

Changes to bin collections scheduled for Christmas Day and Boxing Day only:

- If your usual bin collection is **Thursday 25 December** it will be collected on **Friday 26 December**.
- If your usual bin collection is **Friday 26 December**, it will be collected on **Saturday 27 December**.

Extra summer kerbside bin collections:

- Additional landfill and recycling collections for all households will run from **Boxing Day through to early January**.
- Check SCRRApp for your extra collection dates or visit surfcoast.vic.gov.au/collections and enter your address to download your kerbside calendar.

Extreme weather (including extreme or catastrophic fire danger rating days) impacts:

- Extreme weather may affect kerbside collections or transfer station operating hours.
- Any changes will be announced on SCRRApp and Council's social media channels as soon as they are known.

**Drop off for extra glass and recycling
- at Anglesea, Lorne and Winchelsea
Transfer Stations.**

Give your bins space so trucks can empty them safely:

- Leave 0.5m between bins



- Keep 1m clear of walls, fences and obstacles



**Don't overfill
your bins –
heavy bins can't
be collected.**

Summer transfer station hours:

- **Anglesea Landfill**
Open to commercial waste contractors on Saturdays from 20 December 2025 to 24 January 2026.
- **Anglesea Transfer Station**
Open to the public seven days a week, except Christmas Day.
- **Lorne Transfer Station**
Open Monday, Wednesday and Friday 9am to 2pm from 26 December 2025 to 26 January 2026.
Saturday 9am to 12pm, Sunday 2pm to 5pm.
- **Winchelsea Transfer Station**
Open Tuesday, Thursday 2pm to 4pm, except Christmas Day.
Saturday 1.30pm to 3.30pm, Sunday 9.30am to 12.30pm.

Stay up to date with all bin collections with SCRRApp.



Download SCRRApp at surfcoast.vic.gov.au/SCRRApp



Girl Guide Activities

The Guides have been working on their water badge during Term 4, and have made boats and floated them on the river, they have also been pond dipping to find mini creatures that live in water, and have explored STEM activities with water using food dye, ice and steam to explore the different properties of water, including the water cycle. Last Mon we ended the term with a 'pool party', where we swam at our local pool, played water games and learnt about water safety and how to use a lifeline to rescue someone in trouble.

The Guides meet on a Mon during term, 4.30-6pm, so will commence again in Feb, Enquires contact Leaders-

Yvonne ph 0448 672630 or Lily ph 0428 936 441



Guides at pond dipping - Pearl Sostheim, Taylor Hamilton, Olive Sostheim, Pippa Hamilton, Guinevere Donovan & Savannah McDonald

Winchelsea Men's Shed Gives New Life to Wine Barrel for Barwon Hotel

The Winchelsea Men's Shed has proudly completed a unique project for the Barwon Hotel's Front Bar, transforming a classic wine barrel into a striking drinks table.

The handcrafted piece takes pride of place at the hotel, overlooking the beautiful Barwon River, offering patrons

the perfect spot to enjoy live music, share a meal or a relaxed drink and take in the stunning views.

Under the skilled hands of Workshop Manager Bill Walters and Treasurer Ray King, the barrel was re-purposed into a sturdy table with a real, rustic charm that blends seamlessly with the Hotel's country style. Their craftsmanship reflects the Shed's commitment to both quality and community spirit.

The Winchelsea Men's Shed is dedicated to supporting local initiatives, large or small. Community members are encouraged to consider the Shed for their next project idea—its door is always open to opportunities that benefit the town.



The Shed operates every Wednesday, providing a friendly space where men can come together, work on projects, share skills, and support one another. At its heart, the Men's Shed exists to promote social connection, wellbeing, and a sense of purpose—offering a place where hands keep busy, minds stay active, and friendships grow.

New members are always warmly welcomed.

For further information or to discuss a project idea, contact the Winchelsea Men's Shed.



Clyde Stephenson Men's Shed, Bill Walters Men's Shed, Peter Ardsenijevic Barwon Hotel, Ray King Men's Shed, Ray Atkinson, Men's Shed & Stuart Forbes Men's Shed



**“I sort your recycling, not your rubbish.
Don’t make my job harder – keep rubbish
out of the recycling bin.”**

Evans
Leading Hand
Cleanaway Laverton



Council acknowledges the support
of the Victorian Government

surfcoast.vic.gov.au/recycling



Hysteria Or Wisteria?

by Julia Holohan

Hysteria or wisteria? This was what we asked the other Thursday. It was hot, 30 plus degrees, perfect heat to set our wisteria's seed pods a popping with great force!

It was no use sitting out on the deck for a cuppa as those seeds & their pods hurt like a thrown stone when they make contact. We vacated the deck for inside cover.

I feel our wisteria is the crowning glory of our house reaching the whole way along the front. Each season it has something to show.

Autumn is the autumnal colour of its leaves, they fall gently with a breeze then litter the lawn as breeze becomes a wind bouncing along the top of the blades of grass.

Winter, it's bare of leaves showing the beauty of its intertwined branches. Its seed pods have grown large and are a very dark brown, they're dangling and swaying in the breeze like natural mobiles.

Spring, and the flowers bloom, beautiful big bunches of mauve covering the branches and seed pods. They take centre stage as if saying "look at us, look at us".

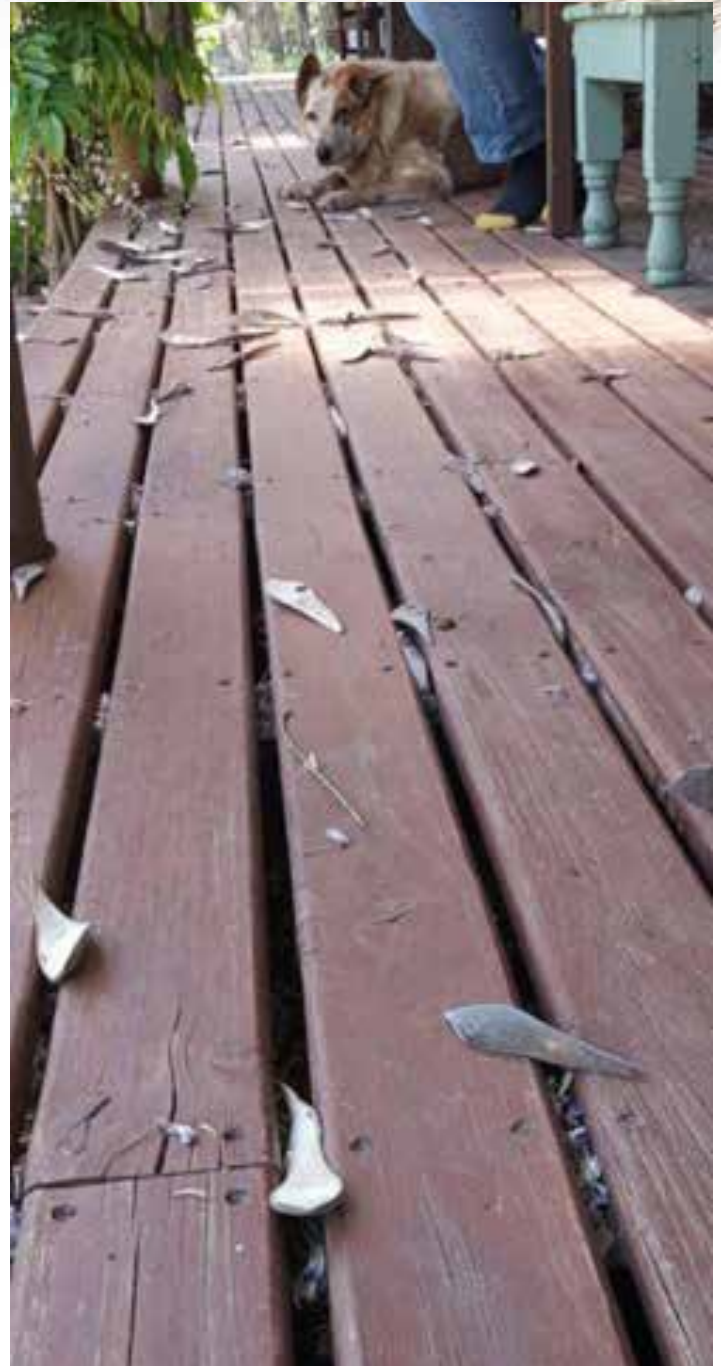
Its been home to many a Willy Wagtail's nest, raising their chicks protected by the flowers and then the leaves.

As the flowers fall off, the green leaves burst through and spring morphs into summer.

Is it spring or summer? It could be either but it is when we get those first few hot days and the seed pods are dry enough, they pop, exploding open and spraying their seeds. They ping on the kitchen window and leave a mass of split open pods with their seeds strewn the length of the deck.

It is also a labour of love. It requires constant pruning to keep the hysteria out of its rampant growth. Cleaning the leaves and its rampant tendrils from the gutters. Sweeping & raking its autumn leaves, and those seed pods after the first hot days.

But, it's hard to imagine not having that hysterical wisteria so we'll continue our labour of love and enjoyment of its seasonal beauty for a good while yet.





Winchelsea Community House Inc. A6247K
 28 Hesse Street, PO BOX 75, WINCHELSEA, Vic. 3241
Phone: (03) 5267 2028 **Email:** manager@winchhouse.org.au
ABN: 48 932 340 254

2026 Yoga & Mat Pilates in the Winchelsea Shire Hall

Yoga Flow With Lisa - Wednesday Nights 7pm - Term 1 2026 (Expiry Wednesday 1st of April) **\$180.00**

Mat Pilates with Hannah - Term 1 2026 - Tuesday Nights at 6.45pm (Expiry Tuesday 31st of March) **\$180.00**

Vinyasa & Pranayama with Kate - Thursday Nights at 7pm Term 1 2026 (expiry Thursday 2nd April) **\$180.00**

All Class Pass - Term 1 2026 (\$33 per week) Expires Thursday 2nd April ticket **\$300.00**

5 Class Pass Expires Thursday 2nd April **\$100.00**

Casual Class **\$25.00**

For more information please contact the Winchelsea community house on 03 52672028 or email shirehall@winchhouse.org.au



Flexible
Affordable
Nurturing
Fun



03 52 672028

reception@winchhouse.org.au

Places now available in 2026 for children over 3 years!



TAI CHI



Friday Mornings
Winchelsea Community house
9am - 10am
\$10 Per Class



Originating in China, Tai Chi and Qigong (Chi Kung) is the practice of slow meditative physical exercise designed for relaxation, balance and health suitable for all ages.



Last Session 19th of Dec, returning Feb 6th, 2026

Last Chatty Café for
2026 Dec 19th

Returning Friday's 10.30am –
12.30pm from Feb 16th.



"Sip, Chat, Share,
Care"

Winchelsea Shire Hall.
Everyone Welcome,
Gold coin donation.

Stitch it,
Don't ditch it!

Wednesday's from 4th of Feb 2026
2pm - 4pm

Winchelsea Community House 'Star Room'
SEWING MACHINE & OVERLOCKER available.

Bring along a craft project you'd like help with,
learn to sew, knit, crochet or repair clothing
and homewares yourself with the guidance of
our knowledgeable community volunteers.

Gold Coin Donation

Winchelsea Community House will close on the 19th of December 2025 and Re-Open on the 12th of January 2026.

We will like to thank the community for all of your support in 2025 and wish everyone a safe and happy Christmas and New Year.

WINCHELSEA KNITTING GROUP

Thursday Mornings 10.30 -12.00
Winchelsea community house.

Returning Thursday 5th Feb, 2026

All Welcome, Learn to knit or bring a project to work on while you enjoy a cuppa and a chat



Craft & Crochet Group



\$5 per person.



1pm, every second Saturday
in the Winchelsea community house.

Returning Saturday 24th Jan 2026

reception@winchhouse.org.au

Please take some time to fill out the community survey and share your ideas for Winch House in 2026!

Enter the link into your browser to complete the survey:

<https://forms.gle/EnrxZVTMfEPEG8ap9>

Summer Pilot To Help Save Around The Home

Barwon Water is supporting customers to save water in their home and garden via a new pilot program.

Residents that purchase water-saving items – such as pressure washers, drip irrigation, efficient showerheads and pool covers – can claim a rebate this summer.

The WaterSmart Home & Garden Rebate Pilot is now open and helping residents to invest in fixtures that can drive down water use. It joins a growing list of rebates and grants that Barwon Water offers to support businesses, community organisations, and residential customers with saving water.

These initiatives aim to deliver lower water and energy bills, conserve precious drinking water, and help the environment. The rebate comes after the driest year in the Barwon catchment since records began.

This has seen Geelong's water storages slump to 1 6-year lows, entering summer at less than 50 per cent for the first time since 2009, when the city was on stage 4 water restrictions.

Barwon Water General Manager Planning, Delivery and Environment Seamus Butcher said we can all play our part to make every drop count and protect our water supplies.

"These water-saving actions might seem relatively small, but collectively they can make a significant difference to our storage levels," Mr Butcher said. "As our climate gets drier and the population grows, our region cannot depend on rainfall alone to meet an increasing demand for water.

"Barwon Water is investing in a range of water sources and making savings



where we can, and we're also here to support customers in making every drop count."

Eligible products under the new rebate program are all water efficient and most are Smart Drop Certified. More details can be found at <https://www.barwonwater.vic.gov.au/water-andwaste/saving-water/watersmart-home-and-garden-rebate-pilot>

Barwon Water is the only Victorian water corporation that offers rebates which are open to all residential customers.

Shop Local This Christmas

The Surf Coast community is encouraged to support local businesses and producers this festive season by shopping locally for gifts and Christmas supplies.

Council is showcasing some of the many unique and high-quality goods and experiences available within the region through its 'Share the Surf Coast Spirit' Christmas campaign.

Councillor Joel Grist said strong trade during the Christmas period was vital for Surf Coast business operators.

"By choosing to buy local at this time of year, you'll find great gifts and quality fresh produce, and you'll also be giving back to the local community," Cr Grist said.

"The Surf Coast has a wide range of retailers, food and drink producers and unique experiences to choose from, and by supporting them, you're strengthening our Surf Coast economy and helping our community to thrive."

The 'Share the Surf Coast Spirit' webpage features a buy local shopping guide with dozens of ideas, including wellness experiences and nature-based

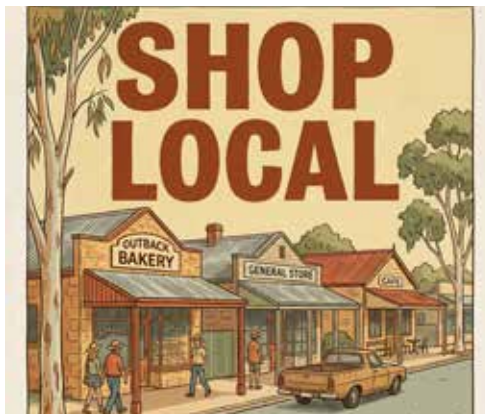
adventures, local art, food and wine, and retail stores and boutiques.

There's also an events section listing upcoming markets across the shire – the perfect chance to find a locally made gift – and special events such as the Ashmore Arts Christmas Open Day on 6 December.

Find out all about things festive in the shire at surfcoast.vic.gov.au/SurfCoastSpirit, also including:

Christmas trees and decorations

The Surf Coast has an extra sparkle this year in local townships with new Christmas trees in Torquay, Winchelsea, Anglesea, Aireys Inlet and Lorne, along with a range of other decorations and Santa activities.



Community carols and events

See the list of community carols and festive events in Council's event guide.

Show Off Your Christmas Lights!

If you're super proud of your Christmas lights, let everyone know by adding your home to our interactive Christmas Lights Map for others to find. It's a fun way to share your festive spirit and enjoy the magic of the season.

Give more, waste less

Discover tips for a low waste, high joy festive season.

Show us how you're getting festive – and win!

How are you celebrating Christmas Surf Coast and hinterland style? We'd love to see it! Share photos of your decorations, celebrations – even your festive pets – and join in the fun. Tag Surf Coast Shire Council on Facebook and @SurfCoastShire on Instagram - and use the hashtag #SurfCoastSpirit - for your chance to win one of two \$100 local prizes!

DIRECTORY

Shop local - Support our supporters

ACCOUNTANT

STS Accounting 5267 2673

AGRICULTURAL

Southern Grain 5267 2351

ANTIQUES

Antique Repairs 0428 672 704

AUTOMOTIVES

SJR Automotive 0423 413 829

Winchelsea Auto 5267 3001

BANK

Bendigo Bank 5267 3189

BUILDERS

Alford Built 0408 583 362

Lupton Builders 0438 840 104

MGT Building 0409 433 687

CAFE

Café La Hoot 0407 528 999

CHIROPRACTOR

One Body 5267 2240

CHURCHES

Anglican 0477 672 042

Catholic 0404 598 558

Uniting 0475 777 301

CLUBS

Girl Guides 0448 672 630

Golf 5267 2660

Lions 4224 0226

Movie 0409 672 054

Probus 0417 467 927

Scouts 0409 330 147

COMMUNITY

Community House 5267 2028

Foodbank 0417 848 292

Mainly Music 0407 838 256

Men's Shed 0407 839 139

Playgroup 0432 019 944

RSL 0488 165 109

Senior Citizens 0427 672 263

Toy Library 5267 2028

CONCRETERS

AMA Concreting 0411 871 950

Vince Concreter 0412 840 704

Winchelsea Concreting 0438 235 237

DANCE

Mel's Dance 0400 874 338

DENTAL

Winchelsea Dental 5267 2071

ELECTRICIAN

Green Lead Electrical 0467 097 101

EMERGENCY

Police 5267 2025

SES 132 500

ENTERTAINMENT

COPACC 5232 9418

EXCAVATORS

DownRyte Excavations 0409 447 288

Trenches & Holes 0427 672 945

FENCING

Direct Temporary 0417 310 800

FRAMER

R&K Creative Framing 5267 2192

FUNERAL

Tuckers Funeral 5221 4788

Worpel Custom 0439 013 145

FURNITURE

Sunny Gym 0401 417 387

GYM

Hesse Rural Health 5257 1200

Winchelsea Medical 5292 8028

HEALTH SERVICES

Colac Hire 5232 1177

Tip Truck Hire 0412 840 704

LAWYER

Wightons Lawyers 5221 8777

MOWERS

All About Mowers 5267 2266

NURSERIES

Oz Trees Nursery 5233 6280

OSTEOPATHICS

Dr Kale Mazurek 0417 114 617

Winchelsea Osteo 5267 2948

PAINTER

South-West Painting 0431 719 218

PLUMBERS

M&L Drayton 0428 520 142

M&B Wood 0418 319 357

Simco Plumbing 0400 643 976

QUARRIES

RAK Davis & Sons 5267 2094

REAL ESTATE

Charles Stewart 5231 5400

HF Richardson 5229 8017

SCHOOL

Primary School 5267 2134

SHIRE

Surfcoast Shire 5261 0600

SPORTS

Park Run 0408 102 802

Pickleball 0438 672 197

STEELWORK

MRP Steelworx 0418 672 234

STORAGE

Storage King 5267 3116

SUPERMARKET

IGA 5267 2676

TAXIS

Surfcoast Taxi 0408 325 992

Winchelsea Taxi 0429 672 888

VET

Moriac Vet 0447 781 089

WATER

Water Supply Specialists 5231 1861

Wazza's Water Cartage 0428 877 260

OZ TREES NURSERY & TREE PLANTING SERVICES

- Affordable seedlings—over 200 species
 - Complete plantation service—farm forestry, shelter, aesthetics
 - Deep ripping & mound ploughing, Rotary bed forming
 - Our experienced staff will help you select species for your site conditions and needs
- Also available—tree planting tools, milk cartons, plastic tree guards & bamboo stakes



569 Warrowie Rd. Colac
P: 5233 6280 F: 5233 6393
E: info@oztrees.com.au
W: www.oztrees.com.au
Open Monday—Friday
9am—4:30pm

Phone OzTrees for professional advice,

Water Delivery



Stainless Tanker Up to 22,000 ltr loads
Barwon Water Registered

Domestic & Rural Water Supplies

Call Wazza
Mob: 0428 877 260
Email: wazza@wazzas.com.au Web: wazzaswater.com

52672192 R & K Creative Framing
for all your framing needs

free quotes
pension discount
specialist in Age &
Disability Modifications

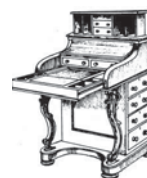
Ray & Kim Jansen
10 Witcombe st
Winchelsea 3241
0414672192

Ray The Home
Maintenance HANDYMAN
abn 47928623462

Antique Repairs

By Doug Burns est. 1976

- All Furniture
- French polishing
- Carving
- Veneering
- Wood Turning
- Porcelain



Unusual Requests Welcome

180 Barwon Terrace, Winchelsea

0428 672 704

WINCHELSEA CONCRETING

• Driveways • Sheds • Decorative Concrete • Raft Slabs

Robert Murphy

☎ 0438 235 237

✉ winchelseaconcreting@outlook.com

DownRyte Excavations



- Excavations
- Drilling and Piling
- Rock Placement
- Tree and Stump Removal

Sean Hunwick

Mobile: 0409 447 288
Email: downryte@activ8.net.au

direct TEMPORARY FENCING

FOR HIRE - SUPPLIED & ERECTED - 7 DAYS
GEELONG - BELLARINE - COLAC - SURF COAST
PHONE CAM 0417 310 800

SOUTH-WEST — PAINTING — GROUP

Contact us:



0431 719 218



www.southwestpaintinggroup.com.au



matt@southwestpainting.com.au

We specialise in:

- New Homes
- Texture Feature Finishes
- New and Old Cabinetry Coatings
- Commercial Projects
- Maintenance Work
- Residential Work
- Wallpapering
- Pre-Sale Painting
- Timber Decking Rejuvenations

M & L DRAYTON

PLUMBING SERVICES

REG No 24356 C/A No C02594

- Domestic and Rural Plumbing
- Roofing
- Sewerage & Septic
- LPG & Natural Gas Connections
- Motorised Drain Cleaning
- Backhoe Hire

Phone Mark 5288 7244

PO BOX 98 WINCHELSEA 3241

Mobile 0428 520 142



DRIVEWAYS, CARPORTS, CROSSOVERS,
FOOTPATHS, SHED SLABS, STAIRS
HOUSE SLABS, EXPOSED, SEALING & MORE

CONTACT ALISTER NOW FOR A QUOTE

☎ 0411871950

✉ AMACONCRETING1@GMAIL.COM

Knuckey's Winchelsea

Ph: 5267 2011

Knuckey's have in stock a complete range of batteries to suit tractor, heavy machinery, cars, utes

The largest range of the best oil for your vehicles—CASTROL—
'when only the best will do'

The largest range of V belts.

A, B, C, D M Sections

Bolts and nuts for all occasions

Steel cut to size

TIP TRUCK HIRE

* FRONTEND LOADER
4 IN 1 BUCKET

* DRIVEWAYS
LEVELLED OFF

* RUBBISH REMOVAL

* GRASS SLASHING
& RIDE ON
MOWER JOBS

VINCE

0412 840 704

CONCRETER

* DRIVEWAYS

* FOOTPATHS

* KERB & CHANNEL

* GARAGES & SHED SLABS

* STEPS

* WHEELCHAIR RAMPS

* VERANDAHS

* PATIO AREAS

* PLAIN OR COLOURED
CONCRETE

* CONCRETE CUTTING
& REMOVAL

VINCE

0412 840 704

TRENCHES & HOLES PTY LTD.

GENERAL EARTHWORKS

DRIVEWAYS

TRENCHER

KANGA

EXCAVATOR (3.5T & 6T)

TIPPER TRUCK

ROCK BREAKER

POST HOLES & FOOTINGS

PHILLIP ROBERTSON

PH. 0427 672 945

A.B.N. 74006896898

MRP Steelworx

Matthew Partridge

p 0418 672 334

e mrpsteelworx@yahoo.com.au

Welding Service

- Onsite welding
- Farm maintenance
- Farm machinery & equipment repairs
- Cattle & sheep yards
- Custom built trailers
- Supply & install gates



Quilt Donation

by Winch House Craft Group

This gorgeous quilt has been donated to Winchelsea Community House to add to the many great raffle prizes to be won, raising money for the Occasional Care group, tickets are still available from the office at Winch House.

The quilt was made and donated by the Wednesday craft group, put together from a shared stash of material and threads.

Winchelsea Churches



Winchelsea Uniting Church

0475 777 301
uca.winchelsea@gmail.com
Hesse St, Winchelsea 3241
Services 9.30am Sundays

St John the Baptist Catholic Church

0404 598 558
Father Joseph Panackal
Harding St, Winchelsea 3241
St. John the Baptist
@ 6pm Sat. Nov. 29, Dec. 6, 13, 20, 27

CHRISTMAS
RECONCILIATION & MASS
Saturday 20 December 5.00pm
Christmas Morning - 9.00am

Mass Jan 2026 @ 6pm Sat. Jan. 3, 10, 17,
24, 31

St Thomas' Anglican Church

0448 687 588
Rev Christopher Duff
Barwon Tce, Winchelsea
Service 10am Sundays

Thought for the Week

"Love it the way it is!!
The way you see the world
depends entirely on your own
vibration. When your vibration changes
the whole world will look different.
It's like those days when
everyone seems to be smiling
at you, because you feel happy."

Have a Blessed week.

John Bader,
Christian Pastoral Carer



Help is available
Speak with someone today
Available 24 hours

13 11 14



DANCE CLASSES

TAKING ENROLMENTS NOW
FOR OUR WINCHELSEA STUDIO

PRE-SCHOOLERS - ADULTS
CONTROLLED CLASS SIZES
JAZZ - THEATRICAL TAP - CLASSICAL BALLET
HIP-HOP - CONTEMPORARY DANCE

ENROL TODAY

WWW.MELSDANCECENTRAL.COM.AU

PAPER RECYCLING

Paper depot rear of
Senior Citizens
Rooms
Harding Street
NEWSPAPERS
MAGAZINES
PHONE BOOKS



All money raised used
for local community
4224 0226

PAPER LOGS & ROLLS

No Chainsaw Needed
Made By Recycled Paper
Environmentally Friendly
Ash Good For Garden



1 Roll
\$2
Pack of 4 Logs
\$5

By using paper logs you save trees



Contact Alan
0476 475 422

All money raised used for local community

Winchelsea Football Netball Club Inc

Hopkins St, Winchelsea winchelseafnc@hotmail.com



Junior Netball

Shae Callahan

Winchelsea Blues Minis – What a Final Game!

Our Blues Minis wrapped up their final game of the season in the best possible way—with another fantastic win! That makes four wins for the season, with the last three coming in the final three weeks. What an epic finish!

The kids were outstanding, playing with heart, teamwork, and determination from start to finish. There were intercepts everywhere, great chasing of the ball, and every player confidently putting their skills into action. The improvement across the season has been incredible to watch.

They truly played like little superstars, and we couldn't be prouder of this team. What a season, Blues Minis!

Half-Season Game Report – Under 11's

U11's Pink

This team has come an incredibly long way in a short period of time. After a rocky start and facing some of the strongest teams early in the season, the U11's Pink showed true grit and determination. In classic Pink style, they never gave up. Each week, the players arrived with big smiles and left with even bigger ones—regardless of the scoreboard. Their positivity, resilience, and love for the game are a true reflection of their wonderful team spirit.

U11's Blue

The Winchelsea Blues have enjoyed an outstanding season so far, securing several impressive wins along the way. What truly sets this group apart is their strong camaraderie and versatility across the court. The commitment, hard work, and eagerness to learn shown by these players has been exceptional and has them perfectly placed heading into the U11 winter season competition.

Half-Season Game Report – Under 13's

U13 Pink

The U13 Pink team has had an amazing start to the season, showing great determination and a genuine willingness to learn. The development across all players has been impressive, with the team continuing to grow in confidence, skill, and game awareness.

Their drive and determination to keep their heads up, keep learning, and always try their best has been wonderful to watch. We are very excited to see what the second half of the season brings and look forward to more outstanding team efforts from this fantastic group.

U13s Blue

The U13s Blue have had an outstanding start to the season. They work exceptionally well as a team and have implemented everything we've been focusing on at training. Our midcourters are making strong, confident drives into the ring and delivering patient, well-timed feeds to the goalers, resulting in a great shooting percentage.

In defence, the girls have been excellent at delaying play and applying pressure, earning some outstanding turnovers. It has truly been a whole-team effort, and the teamwork and commitment on court has been a pleasure to watch.

Half-Season Game Report – Under 15s

Throughout the start of the season, the Under 15s girls have faced plenty of challenges and have adapted and developed together extremely well. They have shown maturity beyond their years, remaining calm, composed, and determined regardless of the outcome.

There is still plenty to work on, but the

growth, resilience, and teamwork shown so far has been very encouraging. It's exciting to look ahead and see what the rest of the season will bring for this talented group.

Half-Season Game Report – Under 17s

The Under 17s have been graded in the highest division of the AFL Barwon Summer Competition, which brings together teams from the GFL, BNFL, and GDFNL. This well-structured competition ensures teams are matched against others of a similar standard.

For the first time in the club's history, our girls have been graded in Division One—an outstanding achievement. Competing in high-quality, tightly contested games, the team has shown impressive maturity and level-headedness on court. There is plenty to continue working on, and we are very excited to see what the remainder of the season will bring after the Christmas break.

Thank You

None of this would be possible without the incredible support of our parents and families. Your time, effort, and dedication in getting players to training and games each week does not go unnoticed, and we are so grateful to have you on this journey with us.

A special thank you to our coaches, who give so much more than just their time. Your expertise, patience, and enthusiasm play a huge role in the development and confidence of our players, and we truly appreciate everything you do.

Enjoy a well-earned Christmas break with your families, and we look forward to seeing everyone back on court in the new year. We can't wait to watch these teams continue to grow, improve, and—most importantly—enjoy their netball together.



Minis



U15s



U15s



U11's Blue



U13s Blue



's Blue



U17s



U13s Blue



U13s Pink



U13s Pink



**Winchelsea
Supermarket**

Trading Hours
Monday to Saturday
 8.30am to 7.30pm
Sunday
 10am to 7pm
Ph: 5267 2676
 29 Main St, Winchelsea

WINCHELSEA Osteopathic Clinic

Back pain • Neck pain • Sporting injuries • Headaches • Shoulder pain • Sciatica

Ph: 5267 2948

34 Main Street, Winchelsea (within *The Exchange*)

Book online at:

www.winchelseaosteopathicclinic.com.au

Take Care of Yourself This Festive Season!

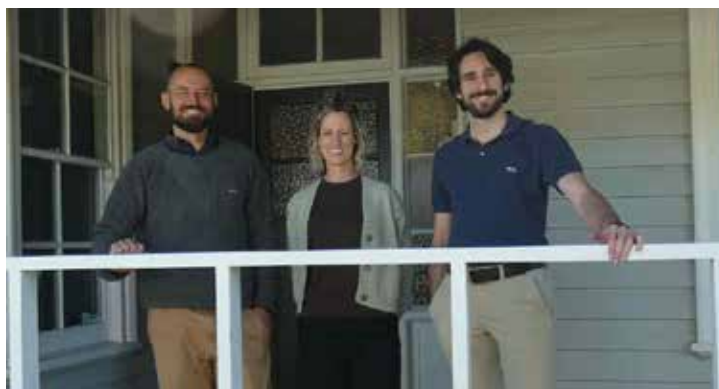
A Message from Winchelsea Osteopathic Clinic ☐

The team at Winchelsea Osteopathic Clinic wishes to thank all our wonderful patients for supporting us throughout 2025. We wish you and your loved ones a very Merry Christmas and a safe and joyous New Year.

Extended Holiday Availability

Need relief during the Christmas rush? Our clinic will be operating with the following hours leading up to Christmas Day:

Day	Date	Hours
Monday	Dec 22nd	9:00 AM – 6:00 PM
Tuesday	Dec 23rd	12:00 PM – 5:00 PM
Wednesday	Dec 24th	1:30 PM – 6:30 PM
Christmas Day	Dec 25th	CLOSED
Boxing Day	Dec 26th	CLOSED



New Year Appointments with Andrew Tivendale

Osteopath Andrew Tivendale will be available to help you recover and prepare for the new year with appointments available on:

- New Year's Eve (Dec 31st)
- New Year's Day (Jan 1st)
- Friday, January 2nd, 2026

ACT FAST: These New Year's appointments have been very popular and are almost fully booked!

We'd love to see you!

WINCHELSEA PLAYGROUP

Each Thursday during school terms.
Come along between 10AM – 12PM.
Check out our Facebook Page for more information about the happenings of each session.
Playgroup leader – Donni Mentles
Email: winchelseaplaygroup@gmail.com
St. Thomas's Hall,
27-29 Barwon Terrace,
Winchelsea VIC 3241

\$5 PER FAMILY
INCLUDES MORNING TEA & HOT DRINKS FOR CAREGIVERS

Scan to be part of our Facebook Group

Winchelsea Foodbank is Closed:
26th December & 2nd January

Contact Tess
0417 848 292
healthpromotion@hesse.vic.gov.au

Fridays, 12 - 2PM
30-32 Hesse Street Winchelsea

For more info, contact Tess
healthpromotion@hesse.vic.gov.au
0417 848 292

WINCH HOUSE
All welcome
No eligibility requirements

HESSERURAL HEALTH

WANT TO JOIN PROBUS?

Enjoy fellowship with other members
Enjoy trips & outings
Listen to guest speakers

Contact Lorraine
0417 467 927



history of winchelsea

Dr. Henry Meyler, Winchelsea's First Medical Doctor.

Dr. Meyler was born in Dublin, on fifth May, 1825. He practiced for many years in Mitchelstown, Ireland, and received a flattering testimonial on leaving for Australia in 1858. A testimonial, representing 168 passengers from the ship on which he came, was presented to him on the 30th February, 1858 conveying in the strongest terms of affection and thanks. He commenced practice in Winchelsea in 1858 where he stayed until 1885, when he was compelled to give up work due to ill health. He married Elizabeth Stirling. Daughter of James Stirling and Ann (Fergie) Stirling owners of the Barwon Inn, as explored in previous articles.

On Saturday 24 Jul 1858 Dr. Meyler was announced Public Vaccinator for the district of Winchelsea. Winchelsea and District Historical Society have in their collection examples of vaccination certificates from the late 1860s for local Winchelsea children signed by Dr. Meyler. In 1864 Dr Meyler was gazetted as the first resident medical practitioner for the Town of Winchelsea. A house was built for Meyler in 1864 at 65-67 Main Street, which he named 'Balgownie'. Upon his death in 1889, Dr Arthur Eddie took over as the local surgeon and physician, also residing (and possibly operating) from the same dwelling. Balgownie was built in the Victorian style and later extended between 1911 and 1914 by Dr. Eddie. On Tue 11 Jan 1870 it was resolved by the Winchelsea council that Dr Meyler be suggested for appointment as coroner. ' for Winchelsea due to the inconvenience of having to send to Colac or Geelong for a Coronor when the need for one arose.

Dr. Meyler travelled extensively throughout the Winchelsea shire, for example, in February 1881, Dr. Meyler had attended to sixteen cases of measles in Mirnee parish, and one case of rheumatic fever in the Yan Yan Gurt parish. It is likely that he did much of this travel on foot, or in his horse drawn buggy, which would have taken considerable time to commute to his patients on house calls. Dr Meyler was elected Secretary of the Winchelsea Public Library, which was in a round stone Tower at the Back of Stirling's Barwon Inn, on Thursday 24 Jan 1861, a position he held for many years. He was also Secretary for the Committee of St Thomas Anglican Parish occasionally called upon as secretary of other public meetings. He was Brother Vice Grand of the Winchelsea Lodge of the Ancient Independent Order of Odd Fellows from its inception in 1863 and nominated as a trustee for the Winchelsea Cemetery in the same year. He was health officer to the shire for many years, and took a great interest in everything pertaining to the advancement of Winchelsea in the district generally.

On Tuesday morning, 30th August, 1859 for example, Dr. Meyler was called to inspect the bodies of two men, Thomas Nowlan and Thomas Glass, who worked on the station of Arthur Hopkins, Esq. and drowned in Lake Murdeduke, about two miles from Winchelsea. On Tuesday 26 March 1861, a



Dr Meylers House 65 Main Street

man named Bryan, in the employ of G. Armytage, Esq., Ingleby was thrown from a spirited horse after its choke-strap came unfastened and was taken into the care of Dr. Meyler at Blairgowrie for several days. On Thursday 17th July 1862 A man named James Cragg was on his death bed at the Barwon Hotel and Dr. Meyler was called to attend him. He died there minutes after Dr. Meyler arrived, and stated that Mr. Cragg had been sick and weak for some time.

In February 1864, Dr Meyler attended a Mr James Hunter, residing at Wurdee Boluc who had been beaten almost to death with a heavy bludgeon by a young man named T. Reynolds while Mr Hunter, was in search of strayed cattle. Hunter was carried home where he was examined as evidence by Justice of the Peace, J. R. Hopkins Esq. Dr. Meyler, found that Mr Hunter had received several dangerous scalp wounds, and his left arm was broken, and his body and limbs one mass of contused wounds. Through the careful surgical and medical attention of Dr Meyler, Mr Hunter recovered.

Dr. Meyler died in May 1889 from apoplexy and is buried at the Winchelsea cemetery. The hearse was preceded by the; members of the Winchelsea Lodge of Oddfellows (of which Dr. Meyler was lodge surgeon), and followed by a large procession of mourners. The Rev.

Robinson performed the burial service, and Mr R. Gosney as the chaplain in read the burial service of the order.



Micheál P O'Dhonnabháin has lived in the Winchelsea area since 2010.

Michael completed a Bachelor in History and Anthropology and a Master of Cultural Heritage at Deakin University, then went on to complete a PhD at Federation University, focusing on colonial and European collections of Indigenous Australian Cultural Heritage. Michael lectured at Federation and Monash Universities, lecturing in World History, Folklore Studies, Indigenous Studies and literary studies. Michael has worked in museums and cultural collections across Victoria, and can usually be seen in and about Winchelsea with his wolfhound.



Winchelsea Football & Netball Catering Team last Thursday night enjoying major sponsor Barwon Hotel's hospitality celebrations for all their hard work within the year.

LIGHT THE WAY TO SAFER CYCLING ON THE SURF COAST



CALLING LOCAL CYCLISTS: Share data from your local cycling experiences to help make our roads more bike friendly

We're partnering with See.Sense, iMOVE, City of Sydney and TAC to bring cutting edge smart bike light technology to our community as part of the See.Sense Insights Trial, and we want you to be part of it.

JOIN THE TRIAL AND HELP SHAPE THE FUTURE OF SAFE CYCLING IN SURF COAST SHIRE.

200 local riders will be selected to take part in this 12-month program, each receiving a free **See.Sense ICON3 smart bike light** valued at over \$240.

As you ride, the light collects non identifiable real time data about your cycling environment.

This information will help us:

- Improve cyclist safety on our local roads
- Guide future road upgrades
- Strengthen funding applications for better cycling infrastructure.

Apply to be part of the trial by Friday 9 January 2026: surfcoast.vic.gov.au/SmartBikeLightTrial



Winchelsea Football Netball Club Inc

Hopkins St, Winchelsea winchelseafnc@hotmail.com

Blues News

Janet Fletcher

Sadly last week the Club learned of the passing of one of its most gifted football players ever, David Terrier. Life Member and Senior Statesman of the Club Norm Banham compiled this reflection after attending David's funeral last Thursday.

VALE DAVID TERRIER.

3.2.1941 ~3.12.2025.

By Norm Banham.

David played football for the Winchelsea Football Club in the late 50's & 60's. At 6ft 1" he played in the ruck and would rest in the back pocket before taking up his rucking position again. Some of his coaches included ex Geelong players Bob Gazzard, John Haygarth and John Thomas. John Haygarth is credited with saying David was one of the greatest players he had ever seen.

David Terrier played in 4 Premierships and won 7 Best & Fairest awards over an 8 year consecutive period, with David Stephenson narrowly beating him in the 7th year.

He also won 9 Most Consistent awards as well as representing Winchelsea at Interleague level. David famously wore the No. 10 guernsey and when a mark had been taken in a pack and the players dispersed it was No 10 that usually emerged with the ball. This led to Rob Knuckey naming him "Sticky Fingers"

David was heavily sort after by the Geelong Football Club and he did train with the Under 19's, but, being a humble and gracious gentleman, he did not seek fame, fortune or glory but a quiet peaceful life on his farm with the love of his life and soul mate to the end wife Betty, and later their family.

He was also an excellent Tennis player and at one stage had a couple of lessons from Australian Tennis great Frank Sedgman. But again, he did not pursue higher levels that were open to his sporting abilities. All David ever wanted was to represent and play his best for his local Club and have Betty the love of his life by his side on the farm.

He was a very handsome gentleman with a great athletic, well-tanned figure. David was a quiet and gentle man and never had a negative attitude.

Who knows how far he would have gone if he had pursued his sporting abilities? Would he have represented Australia in Tennis? He most definitely would have made a career in the VFL Football.

David was farewelled by a small gathering in a simple ceremony at King's Funeral Parlour in Geelong on Thursday 11th December.

Our Condolences to Betty and Families.

David your achievements with the Winchelsea Football Club will forever be etched in history and most likely never bettered. A life well lived. Rest in Peace.

GO BLUES!!

W.F.N.C. INC. CANTEEN : 2026

The Winchelsea Football & Netball Club is looking for a Manager/s for the 2026 Season, to oversee our Canteen on home game days. This is a paid position.

9 HOME GAMES ~ Rounds 1, 2, 3, 4, 8, 11, 14, 16, & 18.

Rounds 2, 3, & potentially 4 will be Twilight games.

A roster will be in place for Footballers & Netballers & Catering team to assist.

Preparing and operating of Canteen duties which include

Knowledge & operation of a deep fryer and being familiar with the part it plays on game days is especially important.

Foods include ~ chips, dim sims, potato cakes, chiko rolls, chicken schnitzels.

Assembling of ham/chicken salad rolls.

Monitoring of pies, pasties & sausage rolls in a pie warmer.

Hot dogs, steamed dim sims, gravy for chips & gravy, beef & gravy rolls.

Chicken schnitzel burgers.

All ordering will be done with consultation, no front of house required, no money handling required. All interested enquiries – Janet Fletcher mob: 0400 783 408



Winchelsea
**Medical
Clinic**

Located at 36 Main Street, Winchelsea 3241

For any enquires or bookings please contact the clinic on 5292 8028.
Or visit our website: www.winchmc.com.au

Opening Hours:

Monday - Friday 8:00am - 5:00pm

(Monday Evening Clinics available and selected Saturdays)



Our clinic accepts online bookings via the app called HotDoc.
Download the app on the App Store or Google Play or head to our website.



17 Alsop Drive

- ❑ LOG BOOK SERVICE
- ❑ AUTO ELECTRICAL
- ❑ TOWING
- ❑ AIR CONDITIONING
- ❑ CLUTCH & BRAKES
- ❑ TYRES
- ❑ WHEEL ALIGNMENT
- ❑ BATTERIES

**CAR, TRUCK REPAIRS
& Roadworthys**

PH: 5267 3001

Mob: 0417 137 457

**R.A.K. DAVIS
& SONS**

**CARTAGE
CONTRACTORS**

WINCHELSEA

SUPPLIER OF ALL QUARRY MATERIALS, TRUCK HIRE

CARTAGE OF GRAIN, LIME, GYPSUM & SUPER

LANDSCAPE & GARDEN SUPPLIES

56 WILLIS ST, WINCHELSEA

Ph – 5267 2094

Ryan – 0438 672 281

email: rakdavissons@gmail.com



SIMPLE STORAGE SOLUTIONS

- Personal & Business Storage
- Boat, Caravan & Vehicle Storage
- High Security Premises
- Individually Alarmed Units
- Electric Gate Access
- 7 Day Access & CCTV

YOUR STORAGE PROBLEMS SOLVED

5267 3116

6 ALSOP DRIVE, WINCHELSEA 3241

Wightons Lawyers

Dispute Resolution & Litigation
Debt Collection
Property Law
Wills & Estates
Powers of Attorney
Business Law
Family Law
By appointment only

22 Willis Street, Winchelsea
ph. 5221 8777

www.wightons.com.au



**Generations of Care
and Compassion.**

Tuckers
Funeral & Bereavement Service
... for a life worth celebrating



AFDA Member

PH: 5221 4788

www.tuckers.com.au



45 Anderson Street, Winchelsea 3241 Tel 5267 2660 winchelseagolf.com.au

Winchelsea Golf Club



Ladies Captain, Robyn Vesey

Ladies Results - 10/12/25

Stableford

Winner: Sue Cuthbert 39 pts
Best 9 hole comp: Lyn Batson 17 pts

Our Wednesday Ladies went out to the Mt Moriac Hotel after their game this week for their annual Christmas celebration. They ate good food, handed out Kris Kringle gifts and said cheers to another great year of golf and friendship.

Results 10/12/25 - Mid Week/Weekly Stableford

14 Players.

1st - Andrew Ellery (32) 40 points
2nd - Peter Bath (29) 39 points
BDL - Rod Batson (31) 36 points
BDL - Doug McLennan (22) 35 points C/B
NTP (6th/15th) - No Takers!
FISH - Rob Wilson 1st hole
FISH - Bill Spencer 2nd Hole

Results 13/12/25 - Saturday Competition - Par

20 Players.

1st - Denis Chappell (21) +5
2nd - Peter Bath (29) +4 C/B
3rd - Andrew Ellery (31) +4 C/B
BDL - Tara Steward (19) +3 C/B
BDL - Don Cuttler (15) +3 C/B
BDL - Neil Hickman (11) +2 C/B
NTP (6th/15th) - Bill Spencer
Golden Hole (2nd) - Don Cuttler
FISH - Nick Stone





Neurologically-Focused, Holistic Family Health Care

Get yours and your families health back naturally
Empower yourselves for life-long health & wellness
Perform and play at your absolute best



www.onebodychiropractic.com.au
 03 52672240 21 Hesse St Winchelsea

Here for your Vitality...




For all your livestock, rural real estate and property management needs, speak to the Charles Stewart team

Livestock

Peter McConachy 0408 522 878
 Jamie McConachy 0418 522 879
 Matthew Nelson 0428 315 400
 Gerard Bohan 0400 005 541
 Dougal McIntyre 0439 575 612

Real Estate

Michael Stewart 0418 520 467
 Peter McConachy 0408 522 878
 Andrew Rice 0457 105 500
 Josh Lamanna 0417 586 032
 Daryl Osborne 0419 388 341
 Anthony McDonald 0418 593 597

Property Management - 5231 5011

Sarah Higgs Nathan Gray Daniella De Rooy



15 Murrell Street, Winchelsea 5231 5400





New Homes, Renovations, Extensions, Bathrooms, Decks & Pergolas

 0408 583 362
 stephen@alfordbuilt.com.au


REGISTERED
 Building Practitioner

Scott McDonald
0423 413 829



S.J.R AUTOMOTIVE
ABN 842 403 646 08
 13 ALSOP DRIVE, WINCHELSEA VIC 3241



Servicing Winchelsea & surrounds

- General maintenance & blocked drains
- Gas fitting & hot water service upgrades
- New homes & renovations

Call Matt - 0418 319 357
mbwoodplumbing.au



Strength training and martial arts for the whole family in Winchelsea

PERSONAL TRAINING
STRENGTH CLASSES
KIDS KUNG FU
BOXING

Intro Deal: \$35 for 2 weeks*

0401417387
sunnygym.com.au
evan@sunnygym.com.au





Saturday 13 December 2025

Trebeck Reserve, Winchelsea

www.parkrun.com.au

Twenty seven parkrunners walked or ran the course through Trebeck Reserve this week in excellent running conditions. There were seven volunteers and we had visitors from Inverloch. Five people recorded a Personal Best time. Congratulations to Finnigan Hunter, Adam Hunter, Chloe Hrobarik, Ross Caldwell and Justin Wallis.

This event was made possible by the following volunteers: Murray Bennett, Kate McInnes, Liz Bennett, Andrea Hurren, Alex Tigani, Michael McKeon and Neil McInnes.

Full details of this week's results can be found at trebeckreserveparkrun.com.au/results or check out our Facebook page for more photos.

If you wish to join us any Saturday morning as a walker, runner or volunteer please complete the simple online registration at parkrun.com.au/register, this is free, only needs to be done once and can be used at any of the 5,000 plus parkrun events worldwide.

To volunteer please send an email to trebeckreserve@parkrun.com



A family business operating for more than 138 years, HF Richardson services an extensive client base throughout the greater Winchelsea area. Our success is built on a long history of innovation and while we've moved with the times, our basic values of honesty, trust and integrity have remained.



Eric Foster
0429 499 924

Sales Executive



Ken McDonald
0418 524 150

Licensed Estate Agent

www.hfrichardson.com.au

**Residential | Rural Lifestyle
Agricultural Farms**

HF RICHARDSON

PROPERTY

**HESSE
RURAL
HEALTH**



Acute Care*
Urgent Care*
Residential Aged Care*
Community Nursing
Dietetics
Physiotherapy
Occupational Therapy

Diabetes Education
Social Support Groups
Counselling
Home Care
Health Promotion

* services from Winchelsea only

www.hesseruralhealth.com.au
P: (03) 5267 1200 E: reception@hesse.vic.gov.au

Winchelsea Star

ISSN 2202-6851



9 772202 685002



Life's busy. Let us help you.

Contact us today

We can help you with:

- Buying your first or next family home
- Saving for your first home
- Residential Investment Lending
- Refinancing from your current lender
- Home loan reviews
- Pre-approvals

With extensive banking experience and financial expertise, we'll help bring your financial goals to life.



Ebony Berg
0400 784 249



Josie Kavenagh
0409 564 192



Community Bank
Winchelsea and District



Water Supply Specialists

WATER SOLUTIONS

74 Dennis Street, Colac
5231 1861



ALL THINGS WATER:

- PUMPS - PIPES
- FITTINGS - TANKS
- POOL CHEMICALS
- IRRIGATION
- WATER PURIFICATION
- SOLAR - REPAIR

DEFIBRILLATORS IN WINCHELSEA

Accessible to the public
24 hours a day



The Winchelsea Lions Club has compiled a list of public access defibrillators in Winchelsea. If anyone knows any others, please contact Linda Carter 0439 817 263.

Ambulance Victoria

33 Willis Street

Bendigo Bank

11 Main Street

Globe Theatre (Side entrance)

17 Willis Street

Hesse Rural Health

8 Gosney Street

Men's Shed

51 Hesse Street

Netball Courts

Eastern Reserve Hopkins St

Senior Citizens Club

36 Harding Street

Uniting Church

33 Hesse Street

Winchelsea Bowls Club

Hesse Street

Winchelsea Golf Club

13 Anderson Street

Winchelsea Primary School

Main Street

Wurdale Memorial Hall

220 Wurdale Road

MGT BUILDING & CONSTRUCTION

NEW HOMES | EXTENSIONS | RENOVATIONS

Ph: 0409 433 687

