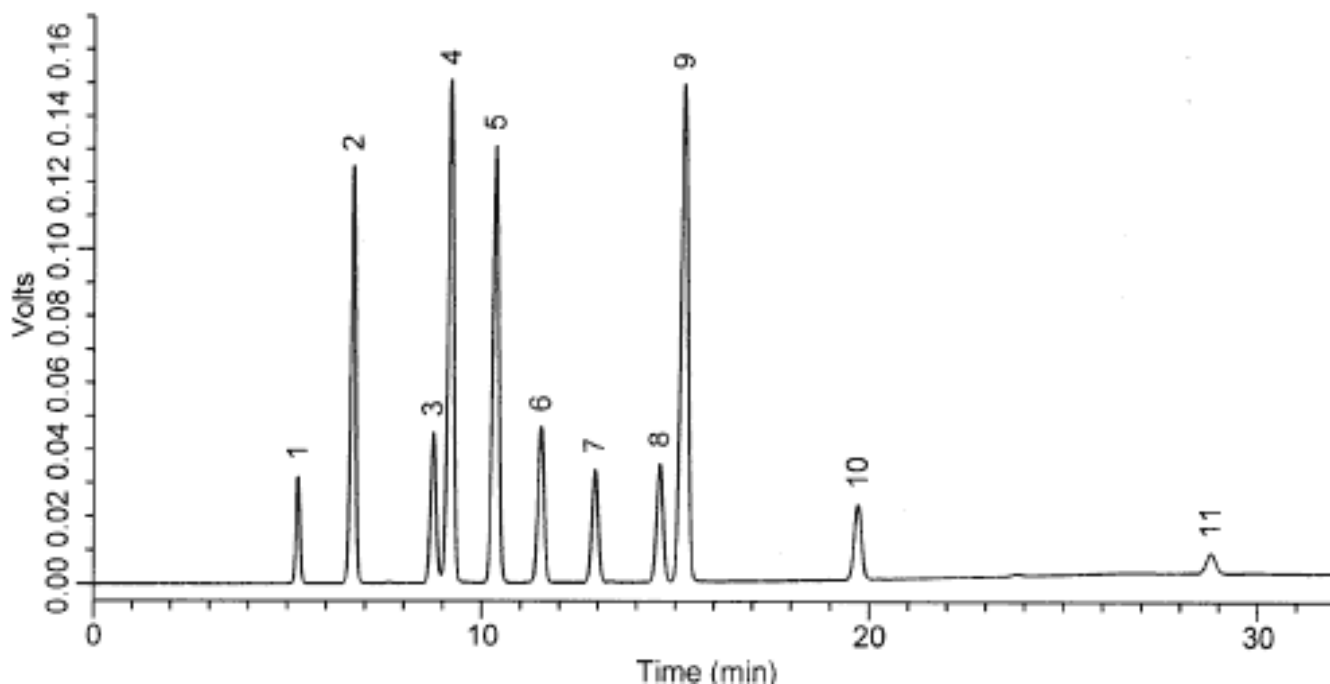


Analysis of EPA604 (Phenols)

Data No. LA316-0000



Column	: Inertsil ODS-3V 150 × 4.6 mmI.D.	Solutes	: 1. Phenol 2. 4-Nitrophenol 3. 2-Chlorophenol 4. 2,4-Dinitrophenol 5. 2-Nitrophenol 6. 2,4-Dimethylphenol 7. 4-Chloro-m-cresol 8. 2,4-Dichlorophenol 9. 4,6-Dinitro-o-creso 10. 2,4,6-Trichlorophen 11. Pentachlorophenol(各 100mg/L)
Column Cat. No.	: 5020-01801		
Eluent	: A) CH ₃ CN B) 100mM NaClO ₄ (pH 2.5; HClO ₄) A/B = 30/70 - 25 min - 60/40 - 10 min - 60/40		
Flow rate	: 1.0 mL/min.		
Col. Temp.	: 40°C		
Detection	: UV at 280nm		
Injection Vol.	: 5μL		
Sample	:		