



EVENT RECAP

SWECHAM BUSINESS CONNECT WITH JÖNKÖPING UNIVERSITY X UNIVERSITY WEST

THURSDAY, 25 JANUARY 2024

SPECIAL THANKS TO OUR ANNUAL PARTNERS

Premium Plus Partners



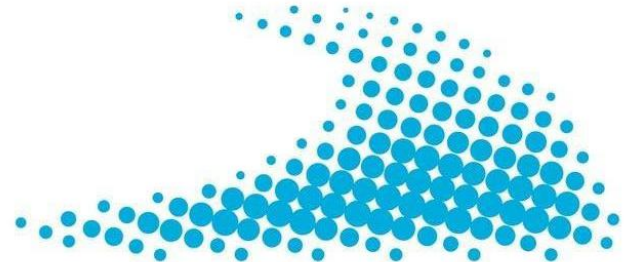
Workplace Partner



BIG THANKS TO OUR EVENT SPONSORS



JÖNKÖPING UNIVERSITY



UNIVERSITY WEST



BIG THANKS TO OUR HOTEL PARTNER

LANCASTER
BANGKOK



BIG THANKS TO CO-BRANDING CHAMBERS AND ORGANISATIONS



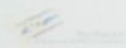
SWECHAM BUSINESS CONNECT 2024

WITH

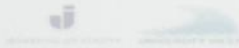
JÖNKÖPING UNIVERSITY X UNIVERSITY WEST

THURSDAY, 25 JANUARY 2024 | 18:30 - 21:00
AT LANCASTER BANGKOK

Organized by



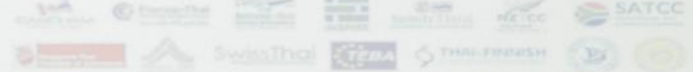
Event Sponsors



Host Chapter



Supported by





Premium Plus Partners



Workplace Partner



swecham.com



Thai-Swedish
Chamber of Commerce

หอการค้าไทย-สวีเดน
www.swecham.com



Thai-Swedish
Chamber of Commerce

ium Plus Partners



Husqvarna®



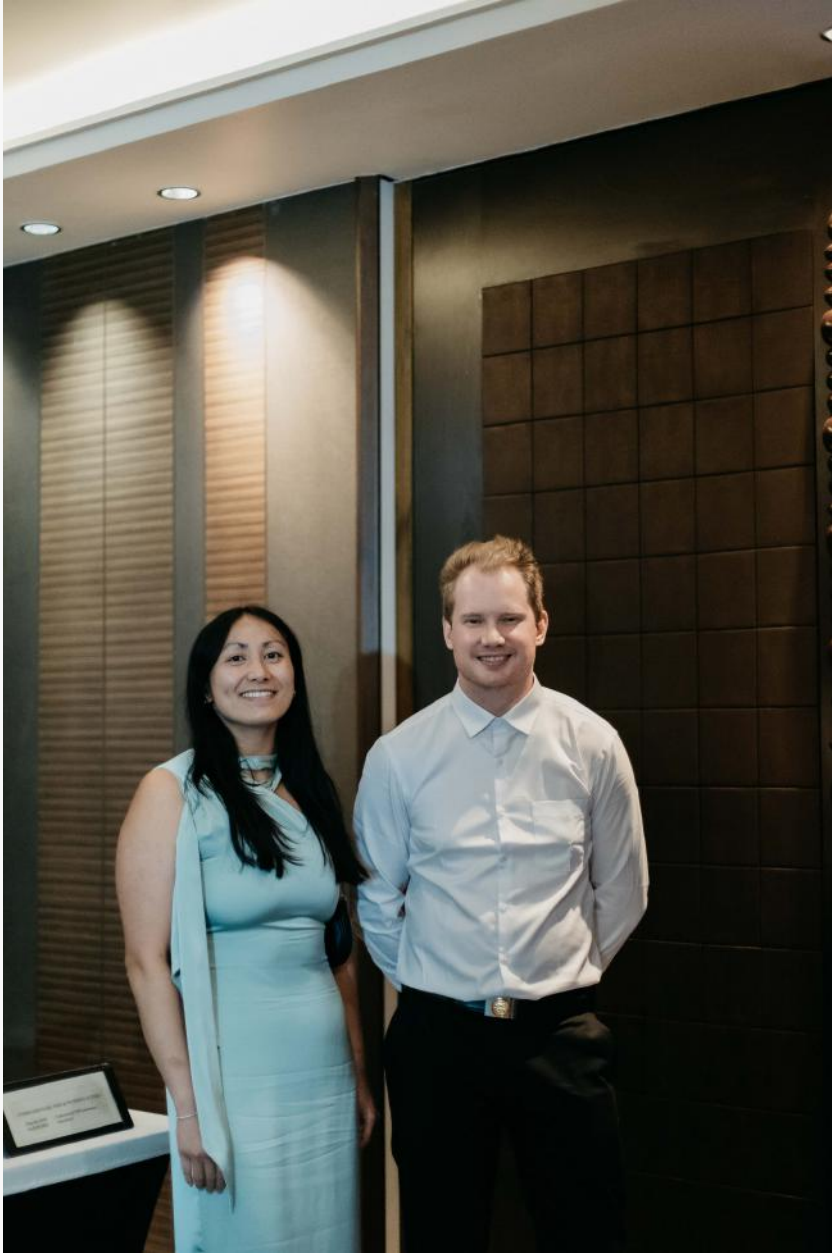
Securitas

orkplace Partner



Thai-Swedish
Chamber of Commerce

































SWECHAM
BUSINESS CONNECT 2024

WITH
JÖNKÖPING UNIVERSITY X UNIVERSITY WEST

THURSDAY, 25 JANUARY 2024 | 18:30 - 21:00
AT LANCASTER BANGKOK

Sponsors: Siam Cement, Siam Cement Public, Siam Cement International, Siam Cement Group, Siam Cement Public, Siam Cement International, Siam Cement Group, Siam Cement Public, Siam Cement International, Siam Cement Group.

Partners: LANCASTER, Jönköping University, University West, SATOC, and other institutional logos.







WELCOME BY
HOTEL PARTNER



MARTIN HURLEY
General Manager
of Lancaster Bangkok





WELCOME BY
HOTEL PARTNER



MARTIN HURLEY
General Manager
of Lancaster Bangkok

EXIT

TALK INTRODUCTION

Special Presentations by
Jönköping University and University West Students
on Contributing to Companies in Thailand



DR. ROY ANDERSSON
Professor at University West and
Associate Professor at Jönköping University







SWECHAM
BUSINESS CONNECT 2023
with JÖNKÖPING UNIVERSITY & UNIVERSITY WEST

INTERNSHIP PROGRAMME WITH
SABIN SCHOOL OF MANAGEMENT



JOEL ZETTERSTRÖM

University West
Engineering and Commerce (Bachelor)
Internship Programme with
Sabin School of Management



MAXIMIRIAN WILSANDER

Jönköping University
Economics and Management (Bachelor)
Internship Programme with
Sabin School of Management

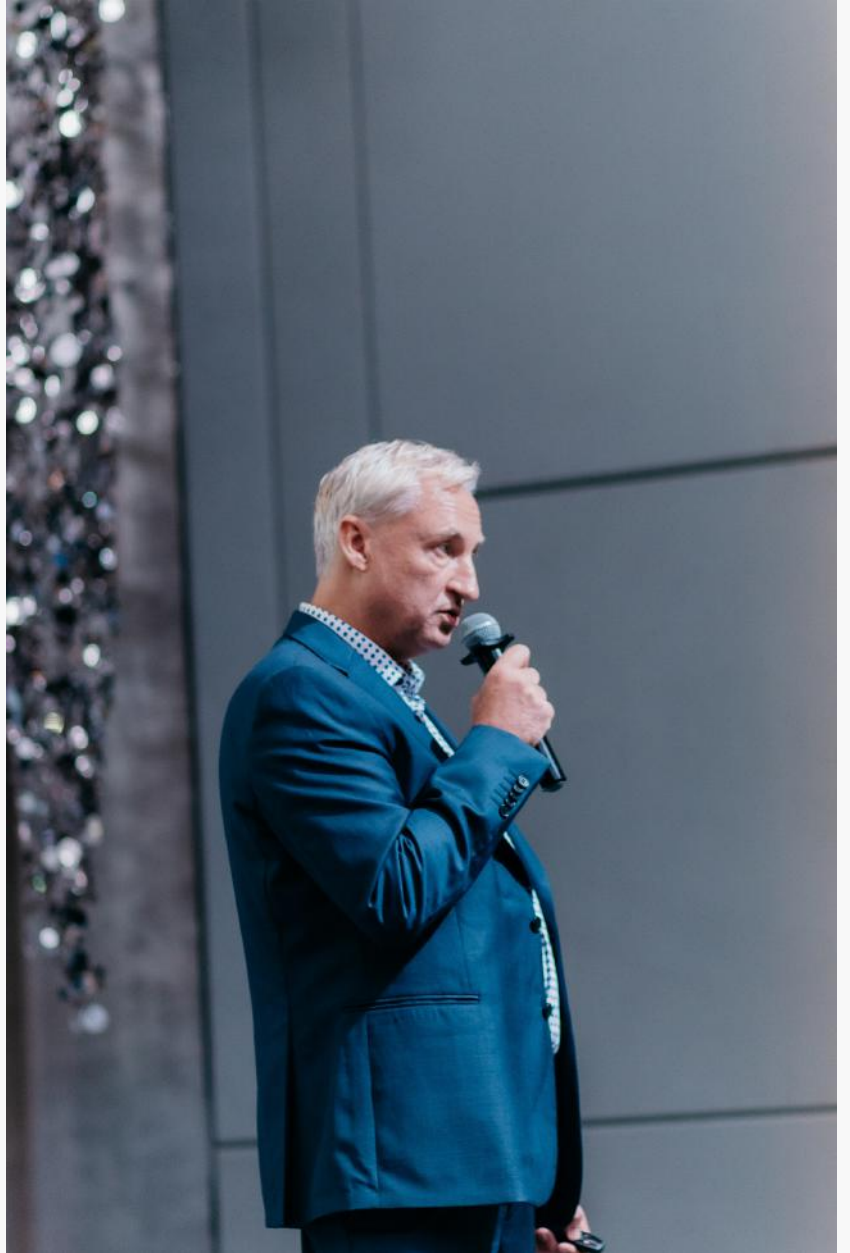




Assignment

- Warehouse for spareparts
- Sales +25% per year
- 7 employees - work overtime
- Need to improve their efficiency







MARTIN HORLEY
General Manager
of Lancaster Bangkok











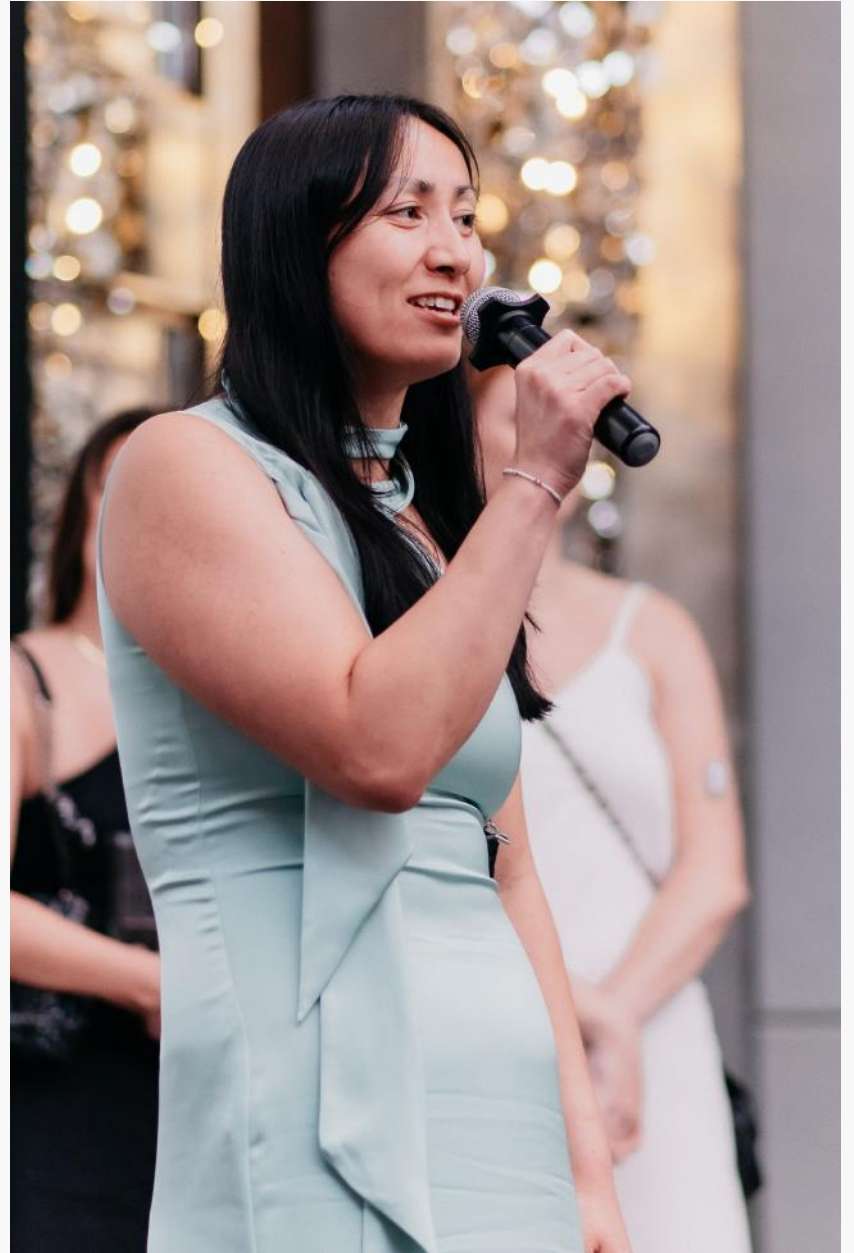




• Thailand Science







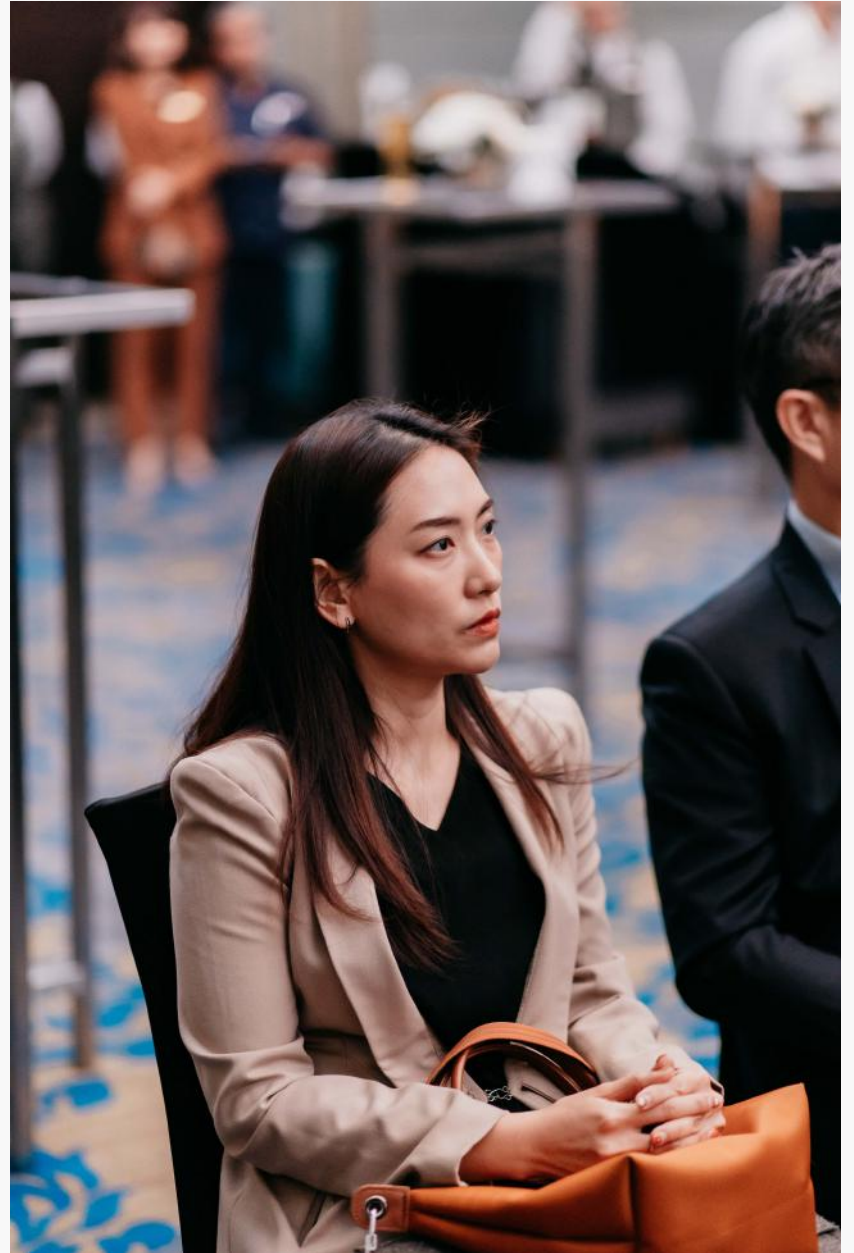


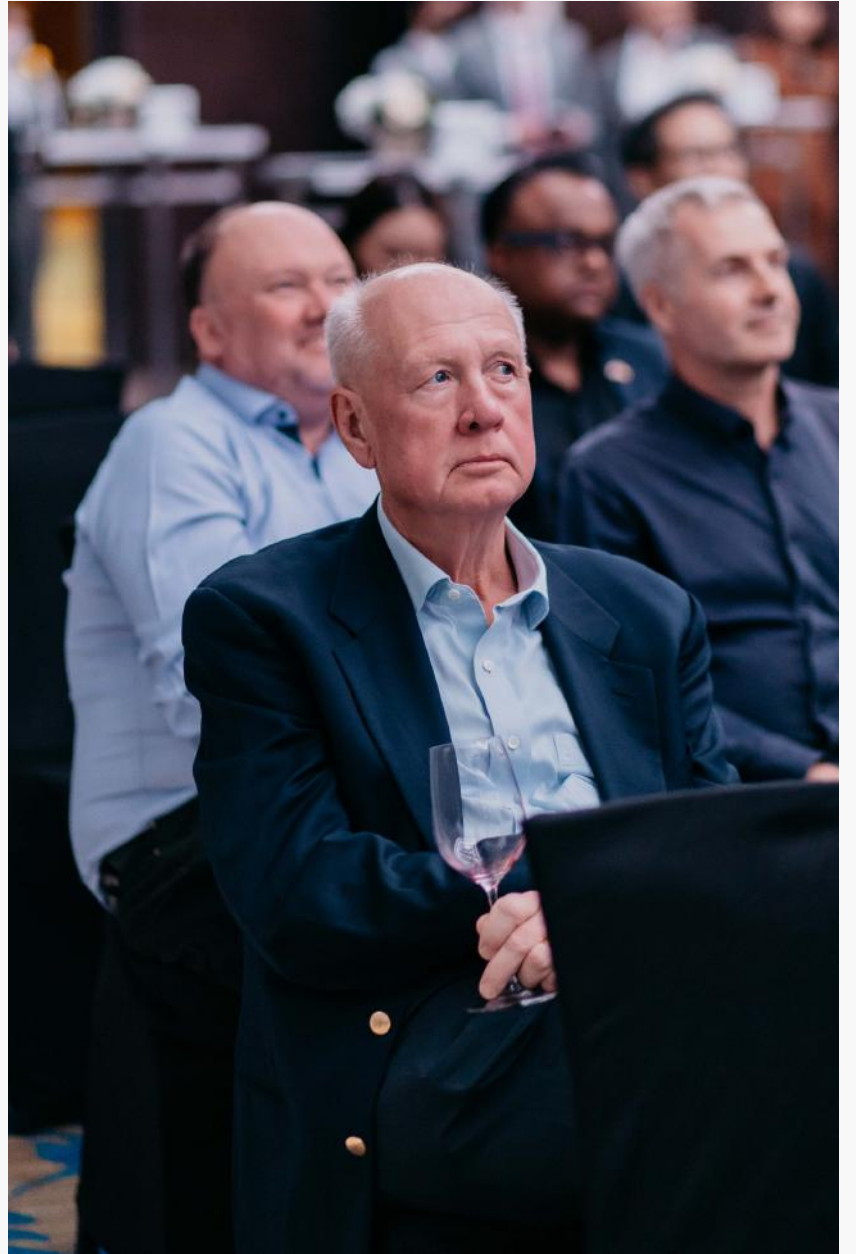


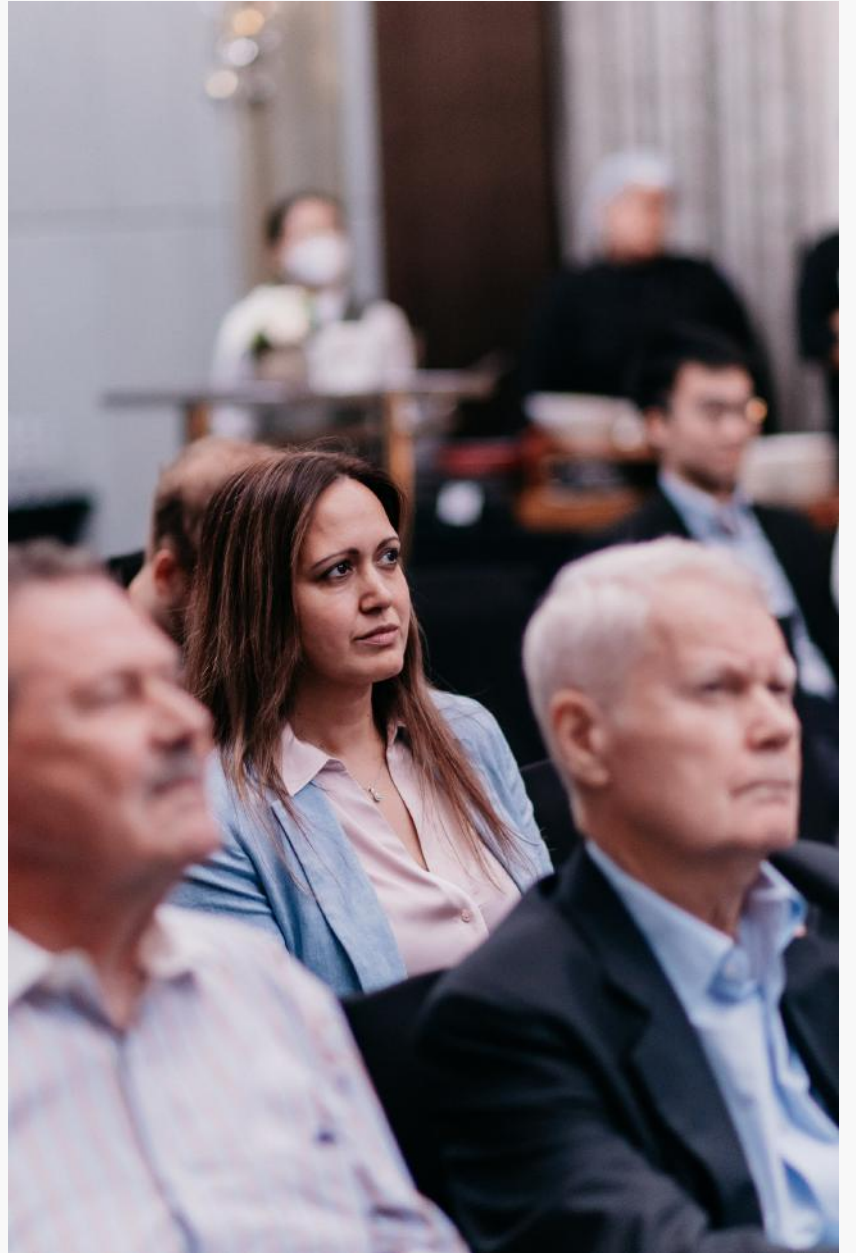


















































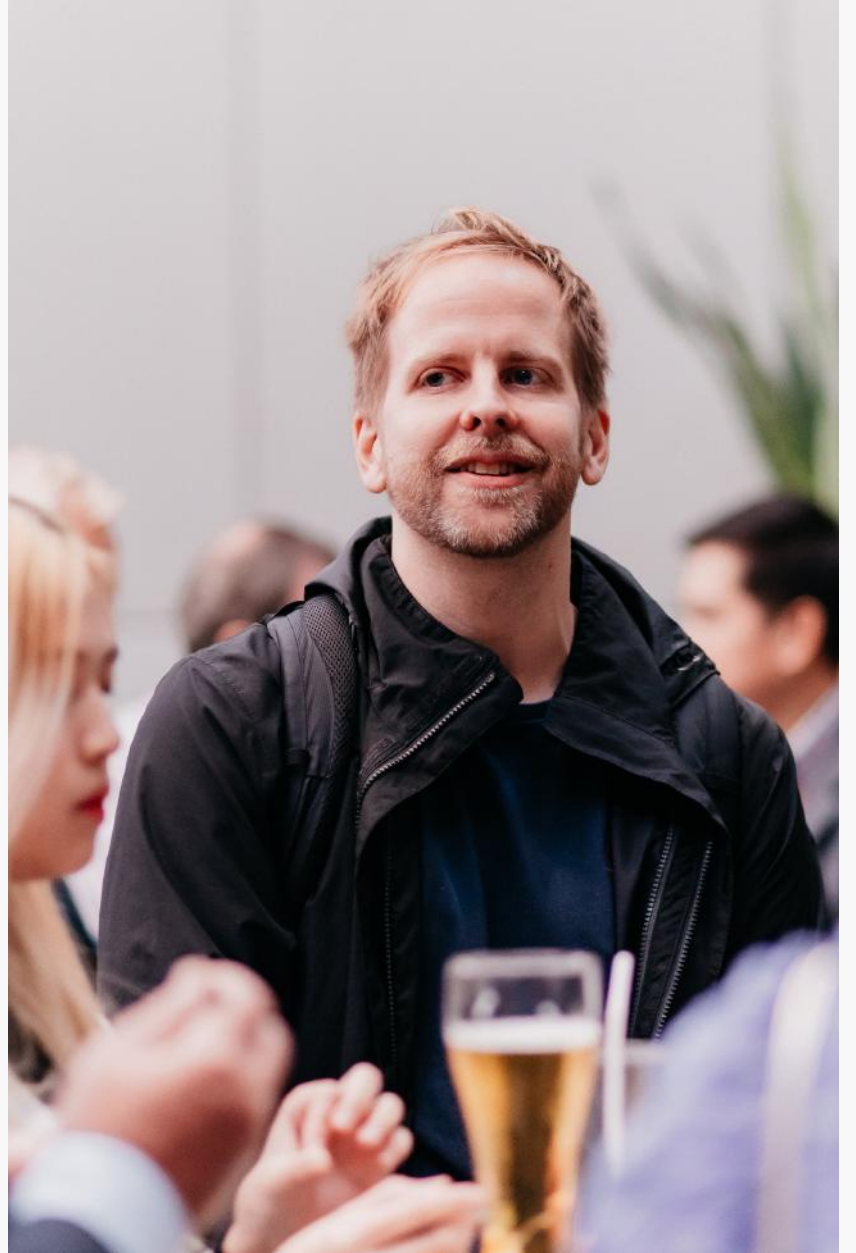
























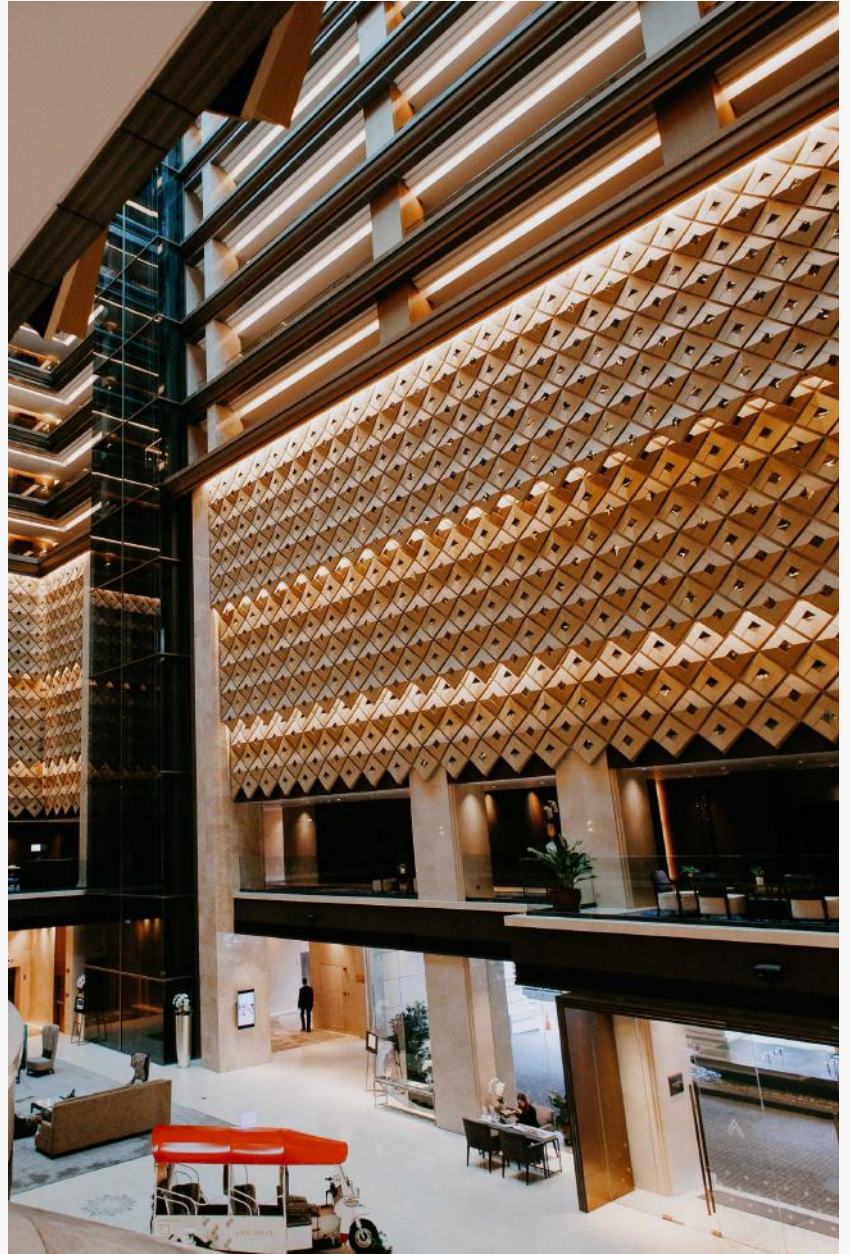
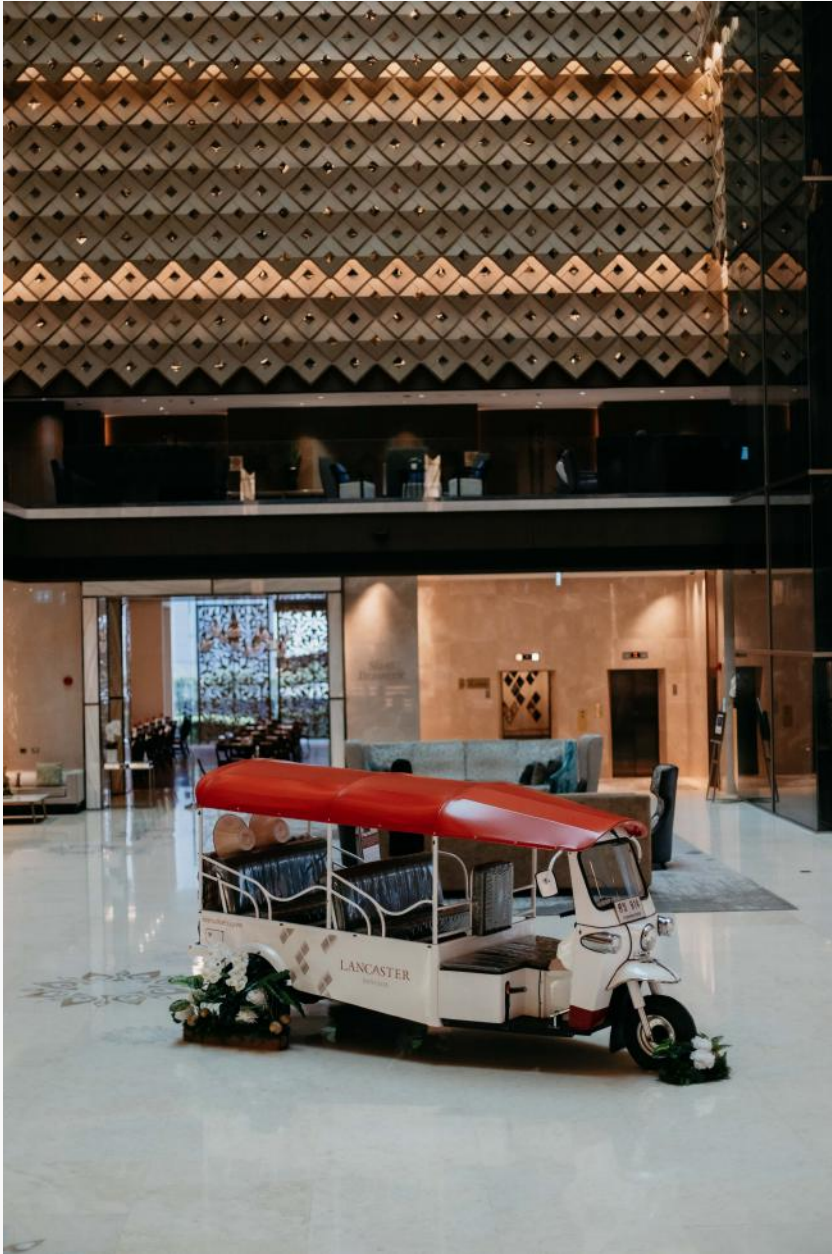














If you have any queries, please feel free to contact us at
contact@swecham.com

