

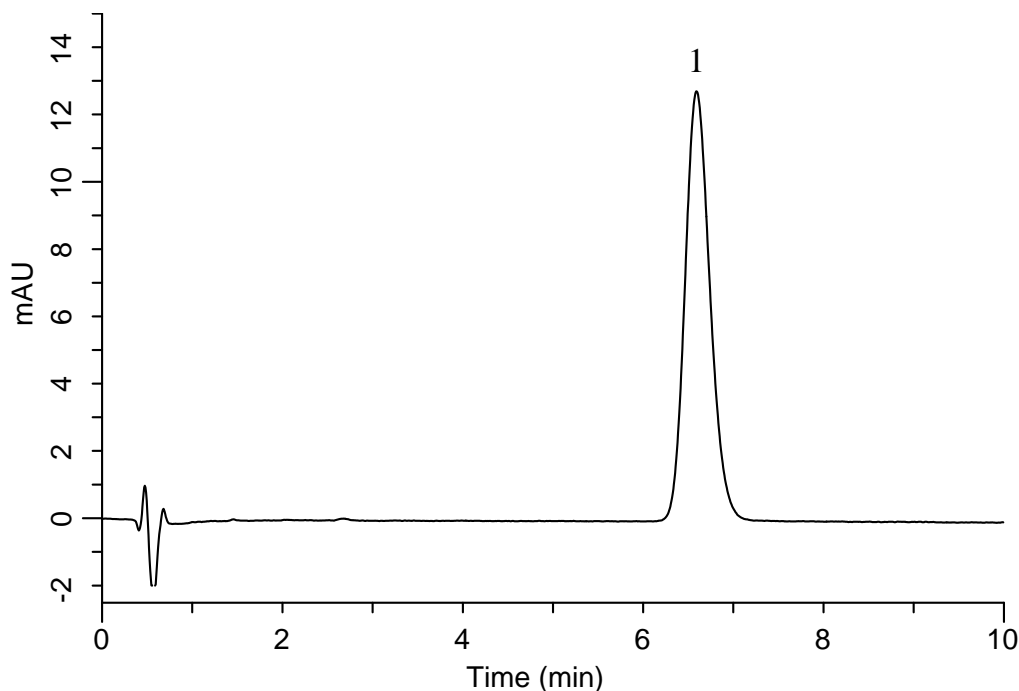
InertSearch™ for LC

Inertsil® Applications

Analysis of Candesartan cilexetil

(Under the Condition of the Japanese Pharmacopoeia,
Candesartan cilexetil and Amlodipine besylate Tablets)

Data No. LB156-0919



Conditions

System : GL-7400 HPLC system
Column : Inertsil ODS-4
(5 μ m, 50 x 4.6 mm I.D.)
Column Cat. No. : 5020-03942
Eluent : A) CH₃CN
B) H₂O
C) CH₃COOH
A/B/C = 57/43/1, v/v/v
Flow Rate : 1.15 mL/min
Col. Temp. : 25 °C
Detection : UV 254 nm (GL-7452 PDA Detector)
Injection Vol. : 20 μ L
Sample : Standard

Analyte:

1. Candesartan cilexetil 9 mg/L

Theoretical plates : 2,772 (\geq 2,000)
Tailing factor : 1.16 (\leq 1.5)
RSD of the
peak area (n=6) : 0.07 (\leq 1.0)