

Simple Concentration and Analysis of Flavor Components in Grated Ginger - with Easy-to-use Enrichment Tool MonoTrap

Preliminary processing procedure

Grated ginger

Commercially available tube-type 3.8 g 40 mL vials

Collection (HS)
MonoTrap DCC181

60 °C for 2 h

Solvent extraction

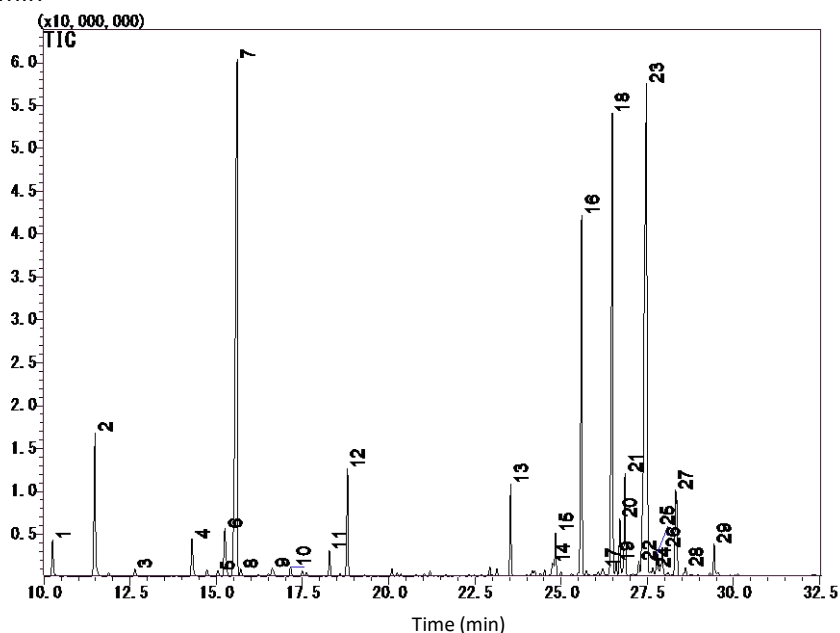
200 µL of dichloromethane
Ultrasonication 5 min

GC-MS

Conditions

System	: GC - MS
Column	: InertCap Pure-WAX 0.25 mm I.D. x 60 m df = 0.25 µm
Col.Temp.	: 40 °C (5 min hold) - 6 °C/min - 250 °C
Carrier Gas	: He 1.2 mL/min
Injection	: Splitless 250 °C
Detection	: MS Scan (<i>m/z</i> : 28.5 - 600)

1. α-Pinene
2. Camphene
3. β-Pinene
4. β-Myrcene
5. 2,5-Dimethylhex-5-en-3-yn-2-ol
6. D-Limonene
7. Eucalyptol
8. 1,4-Cyclohexadiene, 3-ethenyl-1,2-dimethyl-
9. Bicyclo[3.2.1]oct-2-ene, 3-methyl-4-methylene-
10. M-Cymene
11. 2-Heptanol
12. 5-Hepten-2-one, 6-methyl-
13. Linalool
14. β-Terpineol
15. 4-Terpineol
16. Cyclohexanol, 1-methyl-4-(1-methylethyl)-
17. Isobornyl formate
18. Citral
19. Cis-Carveol
20. P-menth-1-en-8-ol



21. Borneol
22. Unknown
23. Citral
24. Naphthalene, 2,3,4,4a,5,6-hexahydro-1,4a-dimethyl-7-(1-methylethyl)-
25. α-Farnesene
26. Citronellol
27. β-Sesquiphellandrene
28. 2,6-Octadien-1-ol, 3,7-dimethyl-, (Z)-

*Standard samples are not used for qualitative analysis. Results in a library search.

GL Sciences disclaims any and all responsibility for any injury or damage which may be caused by this data directly or indirectly. We reserve the right to amend this information or data at any time and without any prior announcement.

GL Sciences, Inc. Japan

22-1 Nishishinjuku 6-Chome
Shinjuku-ku, Tokyo,
163-1130, Japan
Phone: +81-3-5323-6620
Fax: +81-3-5323-6621
Email: world@glsc.co.jp
Web: www.glsciences.com

GL Sciences B.V.

De Sleutel 9
5652 AS Eindhoven
The Netherlands
Phone: +31 (0)40 254 95 31
Email: info@glsciences.eu
Web: www.glsciences.eu

GL Sciences, Inc. USA

4733 Torrance Blvd. Suite 255
Torrance, CA 90503
Phone: 310-265-4424
Fax: 310-265-4425
Email: info@glsciencesinc.com
Web: www.glsciencesinc.com

GL Sciences (ShangHai) Ltd.

Tower B, Room 2003,
Far East International Plaza,
NO,317 Xianxia Road,
Changning District.
Shanghai, China P.C. 200032
Phone: +86 (0)21-6278-2272
Email: contact@glsciences.com.cn
Web: www.glsciences.com.cn

International Distributors

Visit our Website at www.glsciences.com/distributors