



# **3** INFRASTRUCTURE SOLUTIONS



**PERTH**  
(08) 9459 8600  
**KALGOORLIE**  
(08) 9021 8300

**ADELAIDE**  
(08) 8231 1513  
**NEWMAN**  
(08) 9175 1164

**DARWIN**  
(08) 8963 5621  
**MT ISA**  
(07) 4743 6458

✉ [sales@bendtechgroup.com.au](mailto:sales@bendtechgroup.com.au)  
🌐 [bendtechgroup.com.au](http://bendtechgroup.com.au)

2-10 Kewdale Road, Welshpool WA 6106



## INFRASTRUCTURE SOLUTIONS

# INDEX

<b>CDEC PROCESS</b>	<b>///</b>	<b>2</b>
<b>BOLLARDS AND BARRICADES</b>	<b>///</b>	<b>3 - 5</b>
<b>PERSONNEL GATES</b>	<b>///</b>	<b>7 - 10</b>
<b>VEHICLE GATES</b>	<b>///</b>	<b>11 - 13</b>
<b>SITE HANDRAILING</b>	<b>///</b>	<b>14 - 15</b>
<b>GUARDING</b>	<b>///</b>	<b>16 - 17</b>
<b>BARRIERS</b>	<b>///</b>	<b>18</b>
<b>LADDERS AND HOSE REELS</b>	<b>///</b>	<b>19</b>
<b>SHEDDERS</b>	<b>///</b>	<b>20 - 21</b>
<b>PIT LIDS</b>	<b>///</b>	<b>22</b>
<b>GRATING AND FENCING</b>	<b>///</b>	<b>23</b>

# WE OFFER A FULL CONSULTING, 3D SCANNING AND ENGINEERING SERVICE

Projects and the associated challenges often require custom solutions, we take pride in our CDEC system. Consultation, Design, Engineering and Construction is our holistic approach to solution development making maintenance on-site safe, efficient and easy.

## CDEC PROCESS



**CONSULTATION** We come to you and visit your site to get a hands-on feel for your project. The aim of our consultation is to listen to and understand your requirements. If the project requires it, our 3D scanning capabilities will streamline measurement and data capture. This approach allows us to develop and discuss with you on-site, possible solutions to your problem, and the benefits we can offer.



**DESIGN** After the consultation we go back to our design team to begin the development of your custom solution. Our team produce designs in CAD Design complete with all drafting documentation ensuring an advanced manufacturing process. Our process allows and encourages you to be involved in the design stage and collaborate with our highly skilled team.



**ENGINEERING** Once the design is approved, we begin the development and engineering process. This ensures that the right material is used for your project to guarantee structural and functional integrity. We provide full certification that includes WLL, load ratings, integrity reports as well as certificate plates and identifications. We design and engineer all our solutions to ensure full compliance to ensure full compliance with Australian standards.



**CONSTRUCTION** Finally, once the project is ready and certified for construction, we manufacture your solution. We test, machine, fabricate and surface treat as well as trial fit your custom project. We only manufacture high quality products that provide long lasting, safe and efficient solutions.

**BOLLARDS  
/ BARRICADES**



Site bollards designed to aid in traffic and area management.

**CONSTRUCTION**

- Heavy-duty steel
- Blasted and high-performance coated



**BOLLARD 50NB 1200MM**  
Part No. 55015161



**BOLLARD 50NB 1200MM  
+ SIGN MOUNT**  
Part No. 55015162

**BOLLARDS**  
**/ BARRICADES**



**BOLLARD 65NB 1200MM**  
Part No. 5501332



**BOLLARD 100NB 1200MM**  
Part No. 5501331



**BOLLARD 1200MM**  
Part No. 5500919



**BOLLARD 1200MM**  
**SURFACE MOUNTED**  
Part No. 5501482

# BOLLARDS / BARRICADES



**BOLLARD1400MM**  
Part No. 5503236

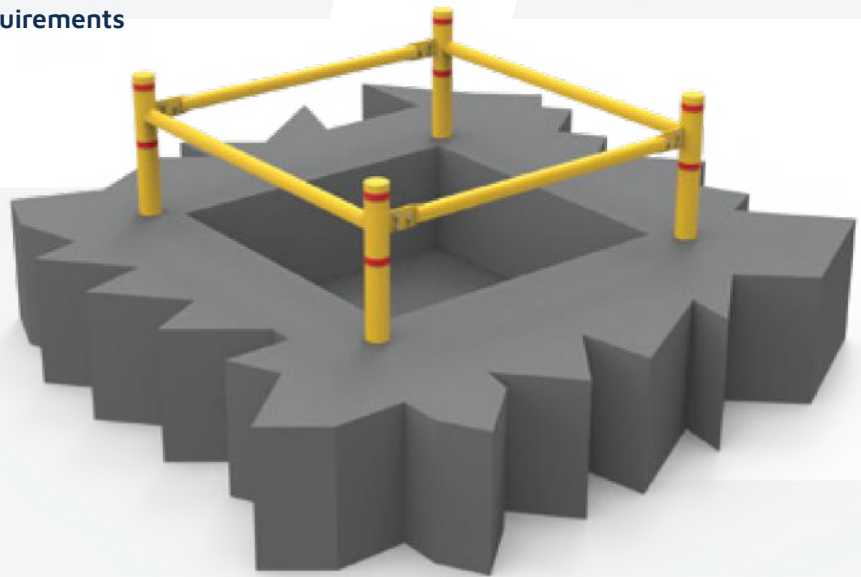


**BOLLARD 1410MM**  
Part No. 5502963

A fully removable barricade system designed to be installed around pits for safety.

### CONSTRUCTION

- Heavy-duty steel
- Can be customised to suit your requirements
- Blasted and finished in your site requirements
- Signage and markings available



**REMOVABLE PIT  
BARRICADE**  
Part No. 5501805



# PERSONNEL GATES

## PERSONNEL GATES



**SELF-CLOSING GATE 850MM**  
Part No. 55007241



**SELF-CLOSING GATE 870MM**  
Part No. 55007242

Site and plant gates designed to aid in personnel and area management.

### CONSTRUCTION

- Heavy-duty steel
- Blasted and high-performance coated



**SELF-CLOSING GATE 960MM**  
Part No. 55007243



**SELF-CLOSING GATE 1050MM**  
Part No. 55007245

## PERSONNEL GATES



**SELF-CLOSING GATE 1000MM**  
Part No. 55007244



**SWING GATE 800MM**  
Part No. 5502994

Site and plant gates designed to aid in personnel and area management.

### CONSTRUCTION

- Heavy-duty steel
- Blasted and high-performance coated



**SWING GATE 820MM**  
Part No. 5502999



**SELF-CLOSING GATE  
WITH HANDRAIL**  
Part No. 5502640

## PERSONNEL GATES



**SELF-CLOSING GATE**  
**1000MM (H) X 650MM (W)**  
Part No. 5503238



**SPRING LOADED GATE**  
**960MM (H) X 720MM (W)**  
Part No. 5502838

Site and plant gates designed to aid in personnel and area management.

### CONSTRUCTION

- Heavy-duty steel
- Blasted and high-performance coated



**SELF-CLOSING GATE**  
**1020MM (H) X 1075MM (W)**  
Part No. 5502638

“ **MAKING  
MAINTENANCE  
ON-SITE SAFE,  
EFFICIENT AND  
EASY** ”

## PERSONNEL GATES



**ROCK BREAKER GATE  
AND HANDRAIL 1000MM**  
Part No. 5502995



**PRIMARY CRUSHER GATES**  
Part No. 5503253

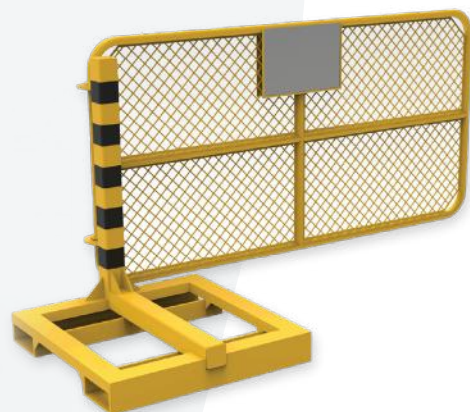
Site and plant gates designed to aid in personnel and area management.

### CONSTRUCTION

- Heavy-duty steel
- Blasted and high-performance coated



**MOBILE BARRICADE  
CART 1100MM**  
Part No. 5503530



**MOBILE PEDESTRIAN  
GATE 2449MM**  
Part No. 5502072

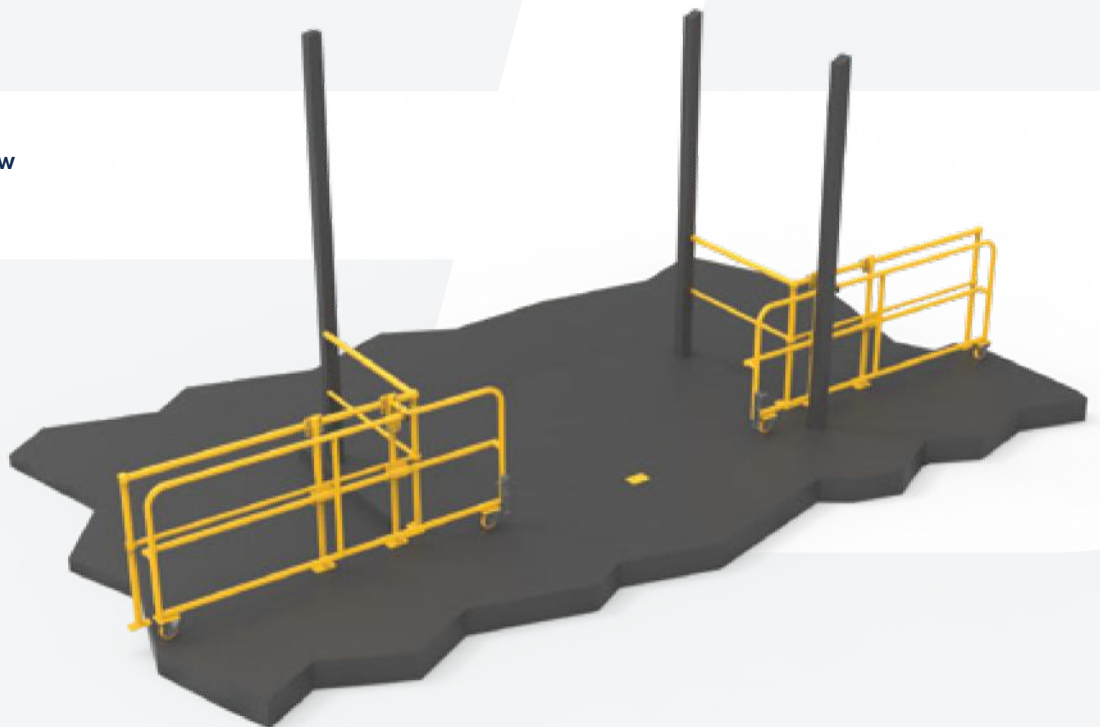
## VEHICLE GATES



Sliding Gates designed and engineered for safe, efficient and easy maintenance. Certified and compliant with Australian Standards. We can custom design and build a sliding gate system to suit your requirements.

### CONSTRUCTION

- Heavy-duty steel
- German made wheels
- Drop locks
- Heavy-duty guide systems
- Finished in Y-14 safety yellow
- Bolt to existing handrails



**SLIDING GATES**  
Part No. 5502379

## VEHICLE GATES



**BOOM GATES**  
Part No. 5501974

Site and plant gates designed to aid in personnel and area management. Our gates can be completely customised to suit your requirements.

### CONSTRUCTION

- Heavy-duty steel
- Blasted and high-performance coated



**ACCESS GATE 7000MM**  
Part No. 5503264

## VEHICLE GATES

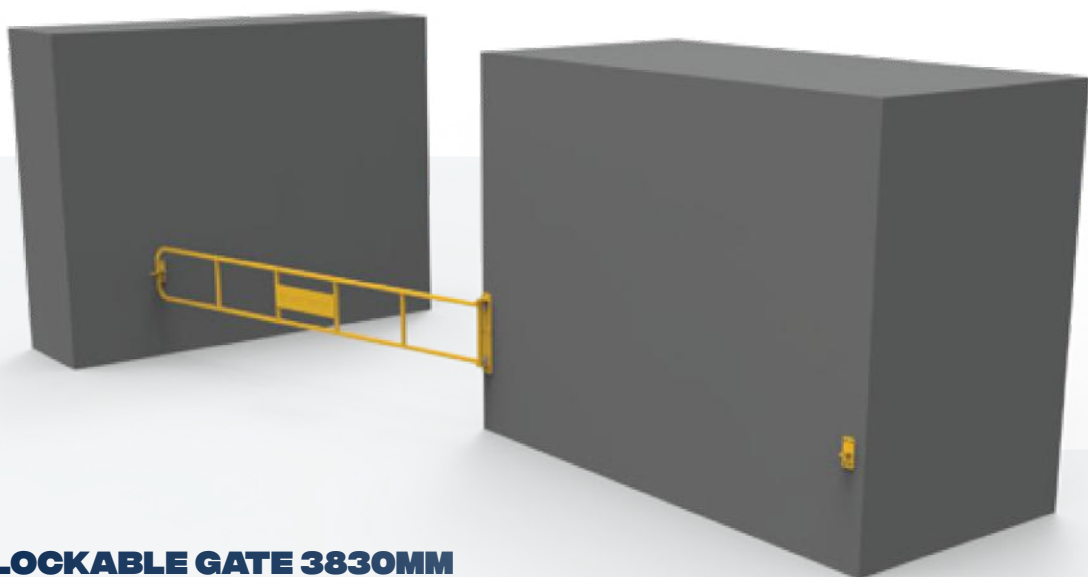


**LOCKABLE GATE 2430MM**  
Part No. 5503367

Site and plant gates designed to aid in personnel and area management. Our gates can be completely customised to suit your requirements.

### CONSTRUCTION

- Heavy-duty steel
- Blasted and high-performance coated



**LOCKABLE GATE 3830MM**  
Part No. 5503366

**SITE  
HANDRAILING**



Site and plant gates designed to aid in personnel and area management. We can supply site handrails and gates to suit your requirements and ensure the safety of your operators, fabricated as per site requirements.

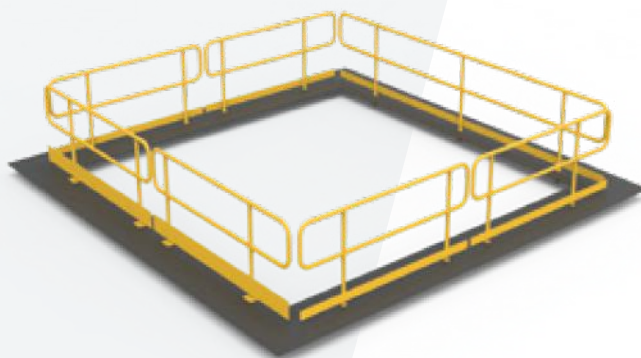
**CONSTRUCTION**

- Heavy-duty steel
- Blasted and high-performance coated



**SELF-CLOSING GATE  
WITH HANDRAIL**

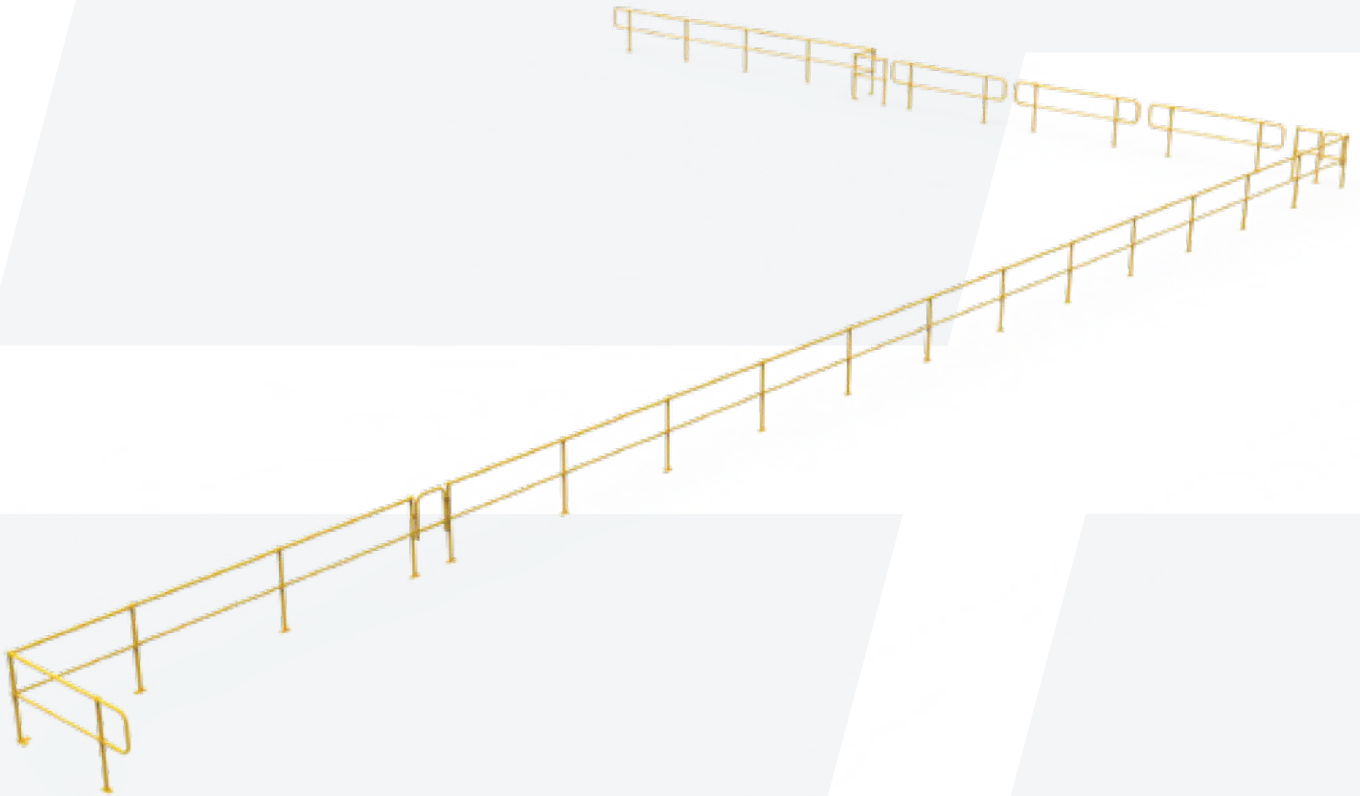
Part No. 5502640



**PIT HANDRAILS**

Part No. 5501762

# SITE HANDRAILING



**SITE HANDRAILS**  
Part No. 5502863



**HANDRAIL AND SELF-CLOSING GATE 1000MM**  
Part No. 5502641

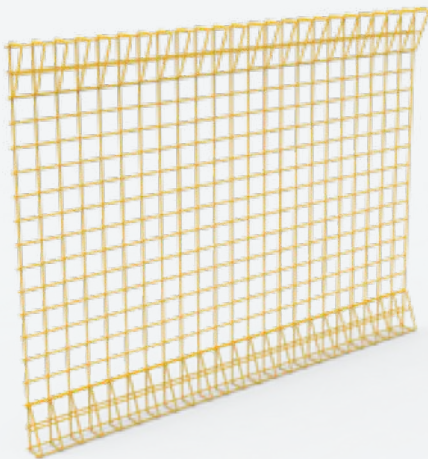
INFRASTRUCTURE  
GUARDING



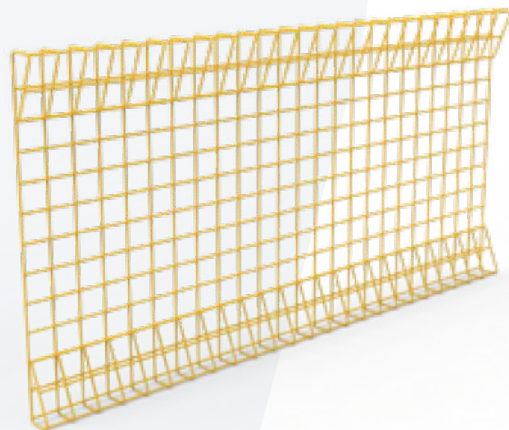
We can supply mesh guarding to suit your requirements and ensure the safety of your operators. All guarding can be coated as per site requirements.

**CONSTRUCTION**

- Heavy-duty steel
- Painted Safety Yellow



**MESH GUARDING**  
Part No. 55017821



**MESH GUARDING**  
Part No. 55017822

## INFRASTRUCTURE GUARDING

### MESH GUARDS FOR FIRE PUMP MAIN GENERATOR

Part No. 5501411



We can supply mesh guarding to suit your requirements and ensure the safety of your operators. All guarding can be coated as per site requirements.

#### CONSTRUCTION

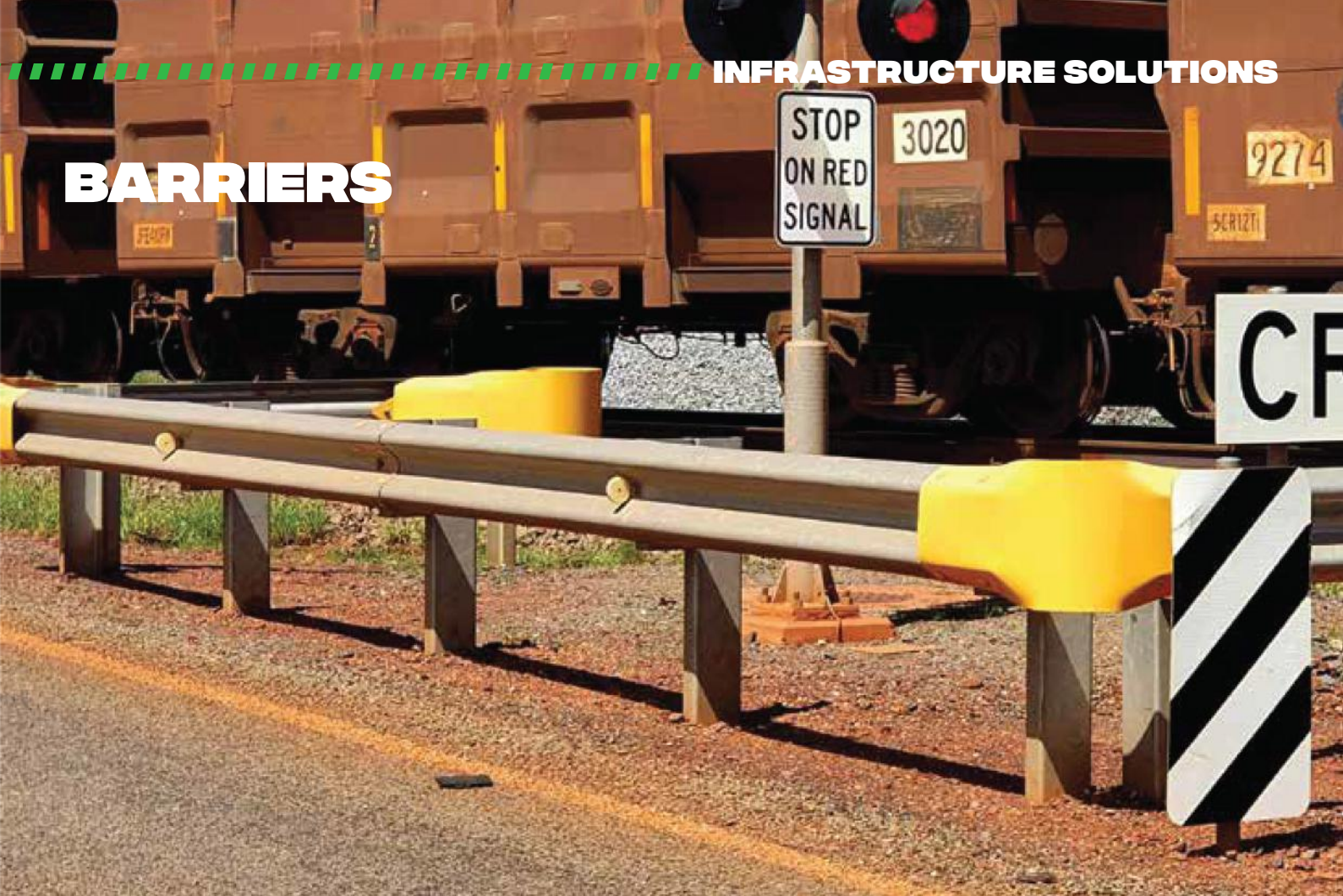
- Heavy-duty steel
- Can be customised to suit your requirements
- Blasted and finished as per site requirements



### MESH GUARDS

Part No. 5501782

# BARRIERS



We supply all barrier and W-beam components and configurations. Either send us a list of parts and requirements or send us the details of the area you need to barricade.

**CONSTRUCTION**  
• Heavy-duty steel

**WE CAN SUPPLY ANY LENGTH OR AMOUNT OF:**  
• W-beam • Bends • Fixings • Posts • Nosing's • Hardware • Signage

# LADDERS AND HOSE REELS

## LADDER CAGES

Part No. 5502125



### CONSTRUCTION

- Heavy-duty steel
- Bolt straight to existing ladder
- Tough paint finish for long-lasting use
- Custom designed and built for specific requirements

## HOSE HANGER

Part No. 5503414



### CONSTRUCTION

- Heavy-duty steel
- Includes demarcation
- Enables safe, efficient and easy maintenance
- Can be customised to suit your requirements

## CATERPILLAR 854K EMERGENCY LADDER

Part No. 5502306

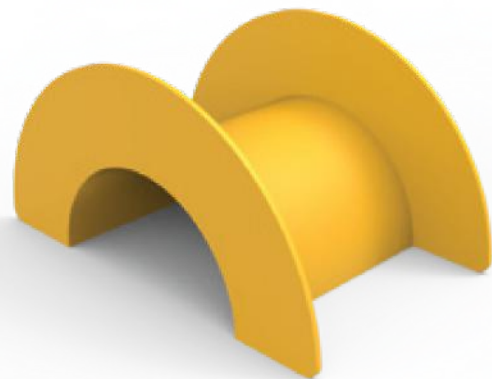


### CONSTRUCTION

- Heavy-duty steel / aluminium
- WLL: 150kg
- Non-slip ladder nosings
- Heavy-duty steel main frame
- Toured gear units for controlled release and easy lifting

## UNIVERSAL HOSE HANGER

Part No. 5502987



### CONSTRUCTION

- Heavy-duty steel
- WLL: 150kg
- Enables safe, efficient and easy maintenance
- Can be customised to suit your requirements
- Certified and compliant with Australian Standards

# SHEDDERS



Bend-tech's Walkway Shedder is designed to handle the elements within a higher than average risk of overhanging hazards.

## CONSTRUCTION

- Heavy-duty steel
- Cyclone rated to region "C"
- Fully modular design and flat packed for transport
- Can be moved around site very easily to where ever is required
- Concrete blocks supplied with fork slots and lifting points

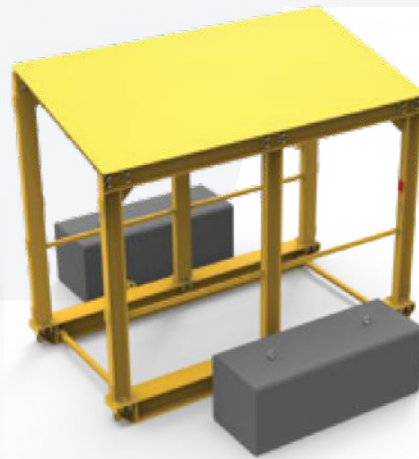


**WALKWAY SHEDDER**  
Part No. 5501269

# SHEDDERS



**CANTILEVER SHEDDER 8000MM**  
Part No. 5501512



**SKID MOUNTED SHEDDER**  
Part No. 5502340

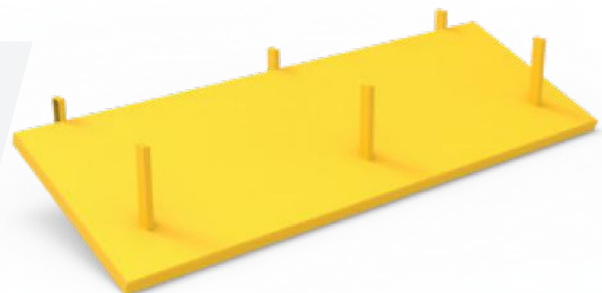
Bend-tech's shedder's are designed and engineered to provide protection and increased safety from the elements and falling debris.

**CONSTRUCTION**

- Heavy-duty steel
- Cyclone Rated to Region "C"
- Can be customised to meet your specific needs

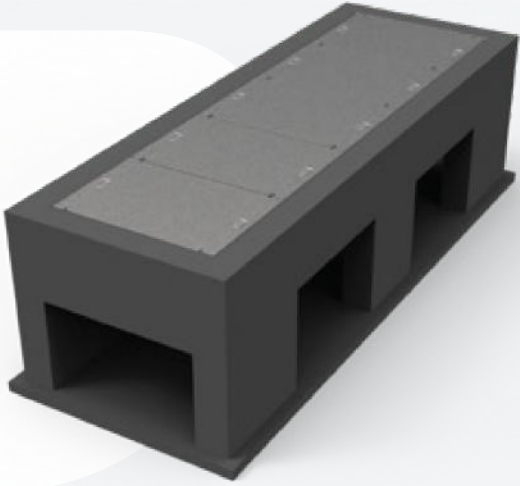


**SHEDDER UNIT**  
Part No. 5501267

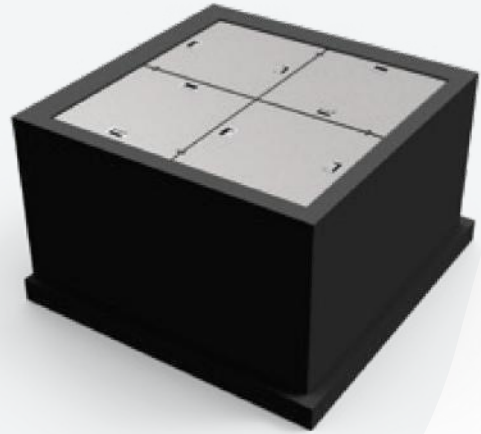


**CV125 STONE GUARD SHEDDER 6000MM**  
Part No. 5502246

# PIT LIDS



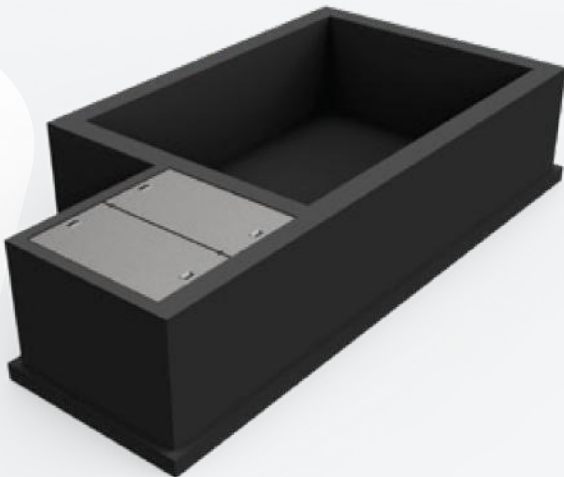
**PIT LIDS 1009MM X 1490MM**  
Part No. 5502861



**PIT LIDS STEEL 1057.5MM**  
Part No. 55030972

## CONSTRUCTION

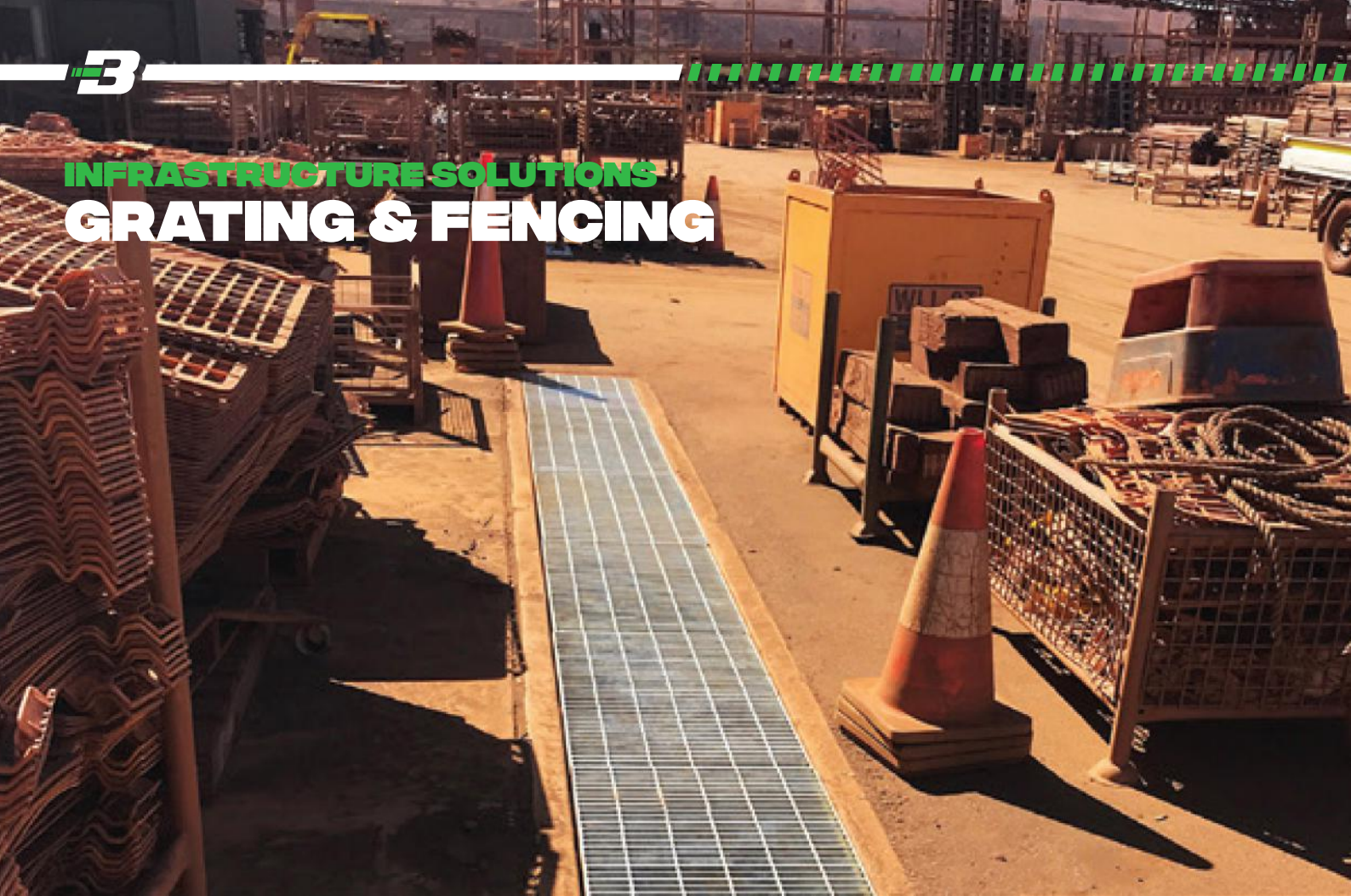
- Heavy-duty steel
- Designed and engineered to maximise safety on your site
- Can be customised to suit your requirements



**PIT LIDS STEEL 1057.5MM**  
Part No. 55030971

“ WE CAN  
CUSTOMISE  
ANY PRODUCT  
FOR YOUR SITE  
REQUIREMENTS ”

# INFRASTRUCTURE SOLUTIONS GRATING & FENCING



## FENCING

We supply all fencing and gate components and configurations. Either send us a list of parts and requirements or send us the details of the area you need to fence or enclose.

### WE CAN SUPPLY ANY LENGTH OR AMOUNT OF:

• Rolls of fencing • Posts • Wire or barbed wire • Gates • Hinges • Locks • Hardware

## GRATING

We supply all fencing and gate components and configurations. Either send us a list of parts and requirements or send us the details of the area you need to fence or enclose.

### MATERIAL OPTIONS:

• Aluminium • Steel • Stainless steel 304 and 316

### FINISHING OPTIONS:

• Untreated • Galvanised (steel only) • Electro-polished (stainless steel only) • Anodised  
• Bitumen dipped (steel only) • Mill finish (aluminium or stainless steel only) • Powder coated

### PATTERN OPTIONS:

Load Bar Pitch 30mm / Cross Rod Pitch 100mm  
Load Bar Pitch 30mm / Cross Rod Pitch 50mm  
Load Bar Pitch 40mm / Cross Rod Pitch 100mm  
Load Bar Pitch 40mm / Cross Rod Pitch 50mm  
Load Bar Pitch 60mm / Cross Rod Pitch 50mm

\*Serrated and plain bars available with any configuration or finish

**B** BIGGER THAN BUSINESS

# TAKE NOTE



# TAKE NOTE



**B** BIGGER THAN BUSINESS

# TAKE NOTE





**DARWIN**  
08 8963 5621

**MOUNT ISA**  
07 4743 6458

**NEWMAN**  
08 9175 1164

**PERTH**  
08 9459 8600

**KALGOORLIE**  
08 9021 8300

**ADELAIDE**  
08 8231 1513

 [sales@bendtechgroup.com.au](mailto:sales@bendtechgroup.com.au)

 [www.bendtechgroup.com.au](http://www.bendtechgroup.com.au)

