

LOUIS REYNERS

EXCELS IN HOISTING, LIFTING AND FALL PROTECTION



WWW.LR.NL

2023

LOUIS REYNERS

EXCELS IN HOISTING, LIFTING AND FALL PROTECTION



tel. +31 (0) 75 650 47 50
info@lr.nl

Symon Spiersweg 13-A
1506 RZ Zaandam

WWW.LR.NL

ELECTRIC CHAIN HOISTS	05
HAND CHAIN HOISTS	19
HOIST ACCESSORIES	23
CONTROLLERS	29
LOAD ARRESTER.....	35
LOAD CELLS.....	36
RIGGING PRODUCTS	39
FALL PROTECTION.....	54
FALL PROTECTION SETS.....	57
WORK POSITIONING HARNESSSES.....	58
FALL PROTECTION ACCESSORIES	60
HELMETS	64
HEAD LIGHTS.....	65
LANYARDS	66
POSITIONING LINES	68
ROPE	69
FALL ARRESTERS	70
TEMPORARY ANCHOR POINTS	71
LIFTING BUCKETS	74
TOOL LANYARDS	75
TOOL BAGS.....	81
STORAGE AND TRANSPORT	82
LADDERS	83
HOOKS.....	84
LOAD ARRESTER.....	88
PERMANENT FALL PROTECTION	89
NOTES.....	90
OUR BRANDS.....	91

IMPORTANT SAFETY ASPECT

Always read the supplied operating and installation instructions.

COPYRIGHT

All rights to the materials and information in this catalogue are owned by Louis Reyners BV.

No further publication or commercial use may be made of the materials and information in this catalogue without the express permission of Louis Reyners BV.

CHANGES

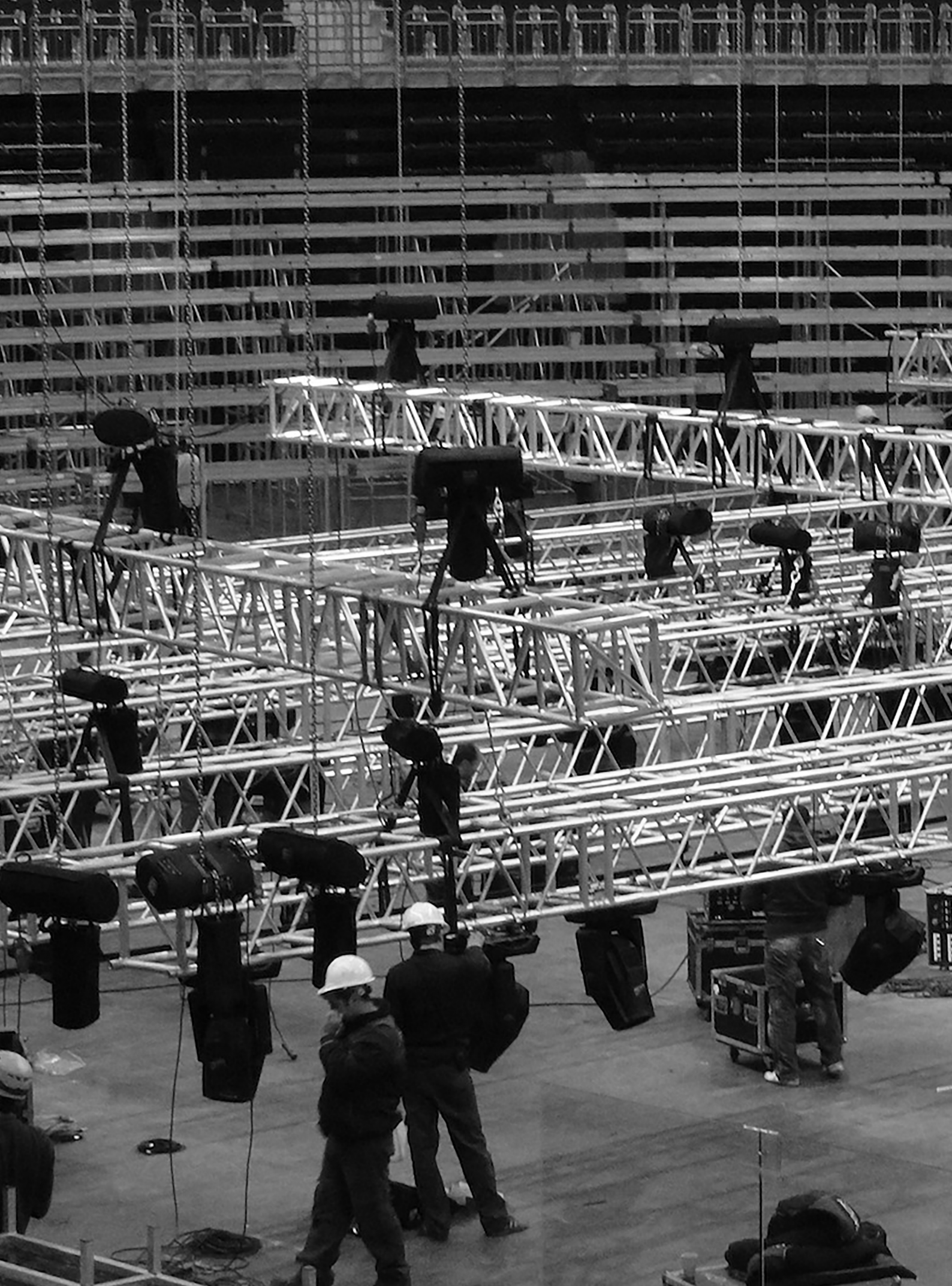
Product changes with reservation.

See our website for the latest price and specifications.

ASSISTANCE?

Our sales team is available for any advise in purchase or use of our products.

Louis Reyners is ISO 9001 certified.



ELECTRIC CHAIN HOISTS

The CM and GIS Electric Chain Hoists will provide you with a wide choice top quality entertainment hoists. We can supply you with the right hoist for any event and situation. We can adjust the hoists for you if necessary, ask us about the possibilities.

GIS LPM, THE LIGHT LOAD LIFTER!

Simple and easy to use – reliable and safe in operation – longlasting and easy to maintain. In theatres, schools, sports centres, multifunction event venues, arenas, congress centres, TV studios or on concert tours, GIS chain hoists are in use worldwide.

Developed and manufactured in Switzerland – for the world market.

- The case hardened and manganese phosphated profile steel chain provides about 15% more capacity at an identical nominal diameter compared to the round steel chain. The higher cross-sectional area reduces wear and increases the lifetime of the chain. The manganese phosphating improves its corrosion resistance and dry running properties.
- LPM, the smallest chain hoist of the LP-family, weighing only 12 kg, lifts up to 400 kg as a D8-hoist. It is modular in design with compact construction which is why it is perfectly suited for the integration in traverses. It offers the option to equip the hoist as D8-Plus by mounting a second DC-springloaded brake on the existing shaft.
- All LP electric chain hoists are equipped with a 3-stage self-contained gear. The helical gearing with geometric optimisation ensures extremely quiet running. This allows the handling of loads during events. Thanks to the protection provided by the cover and housing the sound pressure level of the LP is only 65 dB. This makes it one of the quietest motors available on the market.
- A feature of the hoist is the protection class IP65. It is dust proof and protected against water jets. The LP is perfectly suitable for outside use, even under the most difficult conditions. On open-air events or on concert tours, the rigger will appreciate the weather resistance and reliability of this electric chain hoist.

CM LODESTAR, THE POWER TO PERFORM!

With the Lodestar entertainment hoist (for use in upright or inverted position), CM is one of the leading companies worldwide. Generations of users and could and still can rely on the superb reliability and long service life of the Lodestar.

In addition to reliability and longevity, the "New Line" Lodestar, has a number of new features, which include ensuring very smooth running at a low noise level. In addition to application in the touring, the Lodestar is now also suitable to be used in the theatres.

From major music events up till international sports events and theatre performances, organizers can count on the excellent reliability, each show again.

FEATURES OF THE "NEW LINE" LODESTAR:

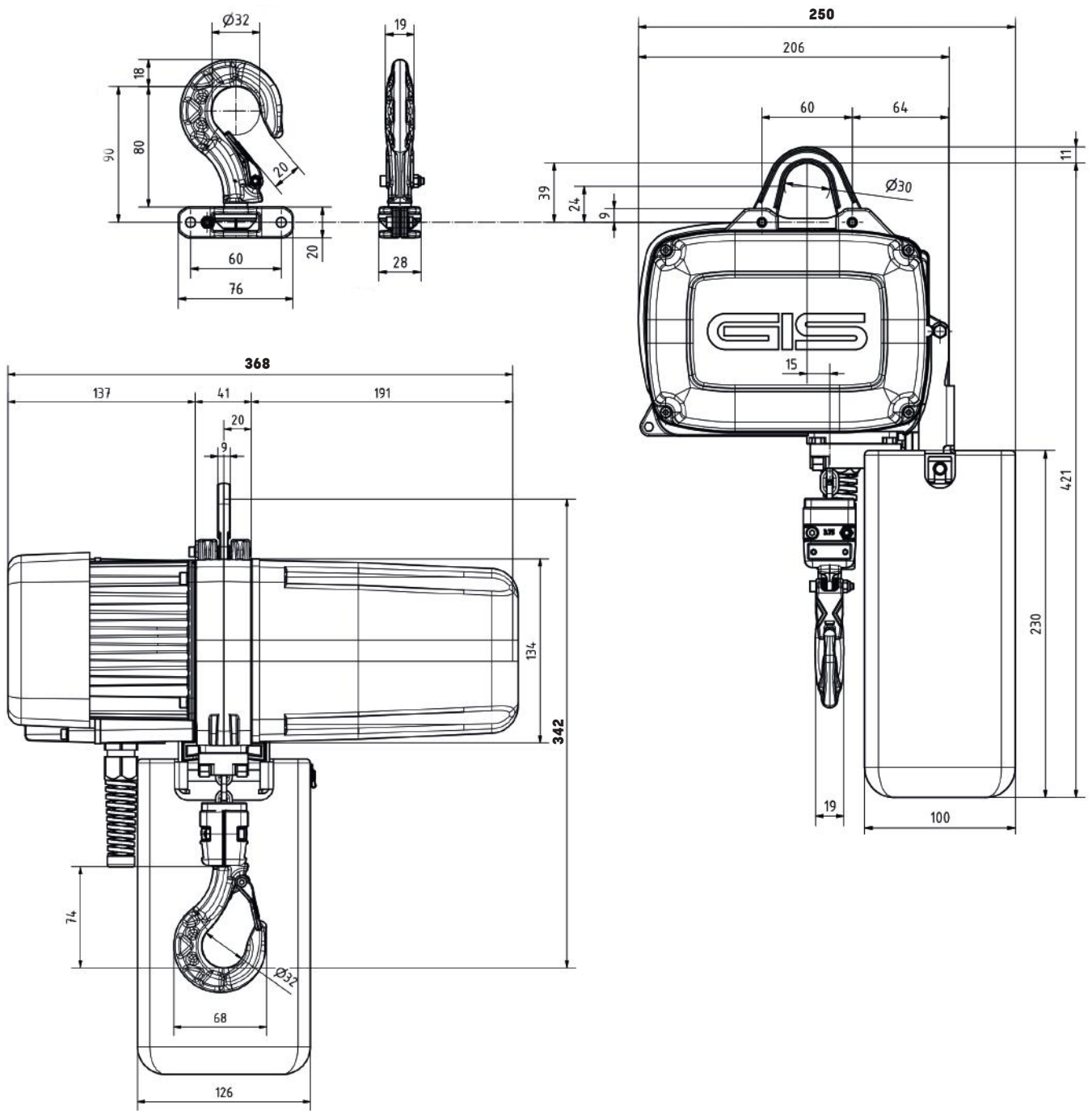
- Capacities from 0,125 t to 2 t (new line 2 t also available as single reeved unit);
- Speed from 2 to 30 m/min;
- Power supply, 1 or 3 phase;
- Directly controlled (DC) or low voltage control (LV);
- Chain wheel with 5 pockets for improved chain wear and smooth running;
- Load limiter outside the gear train, meets international standards;
- Helical gearing: for less noise;
- New connection panel for quick and easy access to the circuit board, transformer with fuses and relay;
- Inorq DC brake;
- Control voltage (LV control): standard 110V, for long cable lengths w/o power drop, optional available in 24V or 48V version;
- Durable, lightweight body: aluminum alloy with a matt black finish coating;
- Duty-cycle-FEM class 2m, designed for extensive use: 30 minutes at 240 switches per hour;
- Electrical connections: the hoists are "touch proof" and comply to all requirements;
- Finger safe wiring and quick-change plug-and-play connectors allow easy voltage change from 208/230 to 460.
- Prevents improper voltage connections which can cause hoist damage (only Low Voltage version);
- Adjustable limit switches: provide an automatic stop in the lowest and highest position at any desired point (only Low Voltage version);
- Double brake: optional. A second brake is easy and fast to install, also afterwards as retrofit kit;
- Encoders are optional on the slow and / or fast shafts, incremental or absolute;
- External chain plate results in:
 - ultimate chain feeding;
 - longer lifetime of other internal parts (housing chain guides);
- Also available with variable speed;
- Optionally available with safety hooks: Alloy Latchlok Hooks with automatic locking when hoisting by means of locking/catch system.

Our salesteam is available for any advise in purchase or use of the hoists.

Please call + 31 (0) 75 650 47 52 or send an email to info@lr.nl.



ELECTRIC CHAIN HOISTS / LPM



3-stage helical gearing



Chain wheel with profiled chain

ELECTRIC CHAIN HOISTS / D8

GIS LPM (L) D8, LP(L) D8, DC OR LV

Thanks to the special coating of the casings and the protection class IP65, the chain hoists are perfectly suitable for both mobile and outdoor use. They can be used as a stationary or climbing hoist without modification. When used as a climbing hoist, the chain guide plate ensures the correct running in and out of the chain. The chain hoist is in accordance with BGV D8 as a modular chain hoist for lifting loads.

The electrophoretic black coating offers high scratch and UV resistance and thus optimal protection against mechanical wear. With a weight of only 12 kg, the LPM is the lightest among the electrical chain hoists in the

entertainment industry. It is modern and compact in design with modular construction. The maintenance-free 3-step drive and the 5-pocket sprocket lead to very quiet running in operation. The slipping clutch is outside the drive train. The phosphate coated and casehardened profile steel load chain enables a chain diameter 7% smaller than round steel chain with the same load capacity. This allows a more compact design of the drive mechanism, which reduces the weight of the hoist. A real innovation is hidden inside the chain hoist. All shaft-hub connections are built to a polygonal design. This allows significantly faster disassembly and assembly during maintenance and reduces service costs.

MAIN FEATURES:

- Direct Control (without limit switch) or Low Voltage Control (42V);
- Aluminium casing and cover;
- Profile steel chain;
- Dry-running slipping clutch;
- Geared limit switch with high positioning accuracy;
- Standard voltage: 400V-3Ph-50Hz;
- Classification group: EN14492(ISO): A3;<31.500C (M3; duty 25%)
- Lifting speed: 4 m/min;
- Protection class: IP65;
- Isolation class F (motor);
- Hook suspension;
- **LPML250 - LPL500 - LPL1000 lightest motor in the market.**

INCLUSIVE:

- Approx. 0,8 m power cable with 16A CEE plug, 4 pin red;
- Approx. 0,8 m control cable with CEE plug, 4 pin yellow (LV version);
- Chain bag.

OPTIONAL FEATURES:

- Other lifting heights and speeds on request;
- On request available with eye bolt suspension;
- Also available in 230V-1Ph-50Hz;
- Double brake;
- Safety hook;
- Various accessories available.

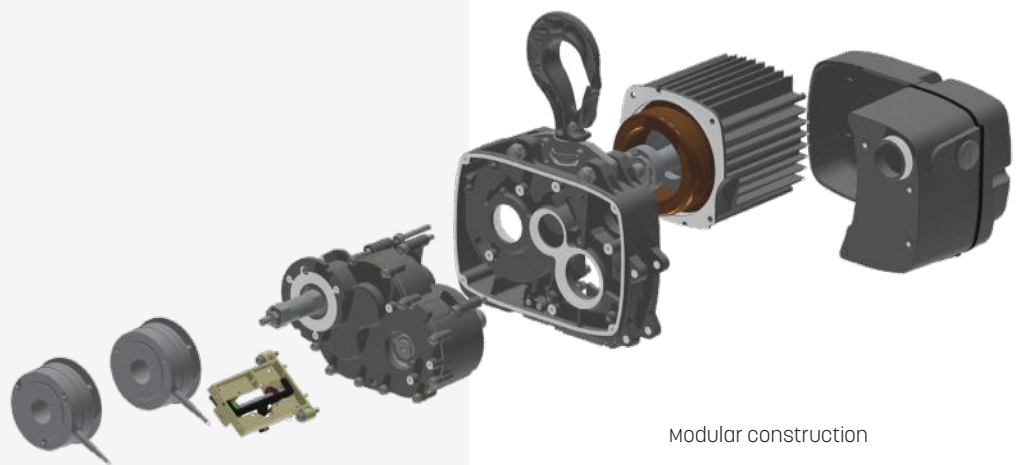
ARTICLE CODE	WLL (t)	LV / DC	SPEED 50HZ (M/MIN)	POWER (KW)	WEIGHT WITHOUT CHAIN (kg)	CHAIN Ø (mm) X NUMBER OF FALLS	STANDARD LIFTING HEIGHT (m)
LPM250-10-DCD8	0,4	DC	4	0,25	12	3,75 x 1	10
LPM250-10-LVD8	0,4	LV	4	0,25	12	3,75 x 1	10
LPML250-10-DCD8	0,5	DC	4	0,38	13	4,1 x 1	10
LPML250-10-LVD8	0,5	LV	4	0,38	13	4,1 x 1	10
LP500-20-DCD8	0,8	DC	4	0,55	22	5,25 x 1	20
LP500-20-LVD8	0,8	LV	4	0,55	22	5,25 x 1	20
LPL500-20-DCD8	1	DC	4	0,74	23	5,7 x 1	20
LPL500-20-LVD8	1	LV	4	0,74	23	5,7 x 1	20
LP1000-20-DCD8	1,6	DC	4	1,5	45	7,45 x 1	20
LP1000-20-LVD8	1,6	LC	4	1,5	45	7,45 x 1	20
LPL1000-20-DCD8	2	DC	4	1,5	46	8,2 x 1	20
LPL1000-20-LVD8	2	LV	4	1,5	46	8,2 x 1	20
LP1600-20DCD8	2,5	DC	4	2,2	72	9,4 x 1	20
LP1600-20LVD8	2,5	LV	4	2,2	72	9,4 x 1	20
LP2500-20-DCD8	3,2	DC	3,2	2,2	74	11,75 x 1	20
LP2500-20-LVD8	3,2	LV	3,2	2,2	74	11,75 x 1	20
LP2500-20-DCD8-2	6,3	DC	1,6	2,2	77	11,75 x 2	20
LP2500-20-LVD8-2	6,3	LV	1,6	2,2	77	11,75 x 2	20



Skeletal load hook



Eye bolt suspension incl. load cell



Modular construction

ELECTRIC CHAIN HOISTS / D8+

GIS LPM D8+, LP D8+ (DC OR LV)

Two independent brake systems and a safety factor 8:1 allows people to stand under the load without a secondary safety device. By means of direct control, the chain hoists can be easily combined as group hoists. The ergonomic control switch is controlled by low voltage in stationary hoists. The chain hoist is in accordance with BGV D8+ as a modular chain hoist for lifting loads.

MAIN FEATURES:

- Safety factor 8:1 according to DIN 56950:2012 - SQP2;
- Direct Control (without limit switches) or Low Voltage Control (42V);
- Aluminium casing and cover;
- Profile steel chain;
- Dry-running slipping clutch;
- Geared limit switch with high positioning accuracy;
- Standard voltage: 400V-3Ph-50Hz;
- Classification group: EN14492(ISO):A5:<125.000C(M5; duty 40%);
- Lifting speed: 4 m/min;
- Protection class: IP65;
- Isolation class F (motor);
- Hook suspension.

A single reeved 0,25t chain hoist. The chain hoists are perfectly suitable for both mobile and outdoor use.

The top and bottom end positions can be individually and precisely set. The optional locking load hook prevents the load from accidentally slipping off the load hook.

INCLUSIVE:

- Approx. 0,8 m power cable with 16A CEE plug, 4 pin red;
- Approx. 0,8 m control cable with CEE plug, 4 pin yellow (LV version);
- Double brake;
- Chain bag.

OPTIONAL FEATURES:

- Other lifting heights and speeds on request;
- On request available with eye bolt suspension;
- Also available in 230V-1Ph-50Hz;
- Various accessories.

ARTICLE CODE	WLL (t)	LV / DC	SPEED 50HZ (M/MIN)	POWER (KW)	WEIGHT WITHOUT CHAIN (kg)	CHAIN Ø (mm) X NUMBER OF FALLS	STANDARD LIFTING HEIGHT (m)
LPM250-10-DCD8+	0,25	DC	4	0,25	13	3,75 x 1	10
LPM250-10-LVD8+	0,25	LV	4	0,25	13	3,75 x 1	10
LP500-20-DCD8+	0,5	DC	4	0,55	23	5,25 x 1	20
LP500-20-LVD8+	0,5	LV	4	0,55	23	5,25 x 1	20
LP1000-20-DVD8+	1	DC	4	1,50	47	7,45 x 1	20
LP1000-20-LVD8+	1	LV	4	1,50	47	7,45 x 1	20
LP1600-20-DCD8+	1,6	DC	4	2,2	75	9,4 x 1	20
LP1600-20-LVD8+	1,6	LV	4	2,2	75	9,4 x 1	20
LP2500-20-DCD8+	2,5	DC	4	2,2	77	11,75 x 1	20
LP2500-20-LVD8+	2,5	LV	4	2,2	77	11,75 x 1	20



Modified chain bag bracket LPM



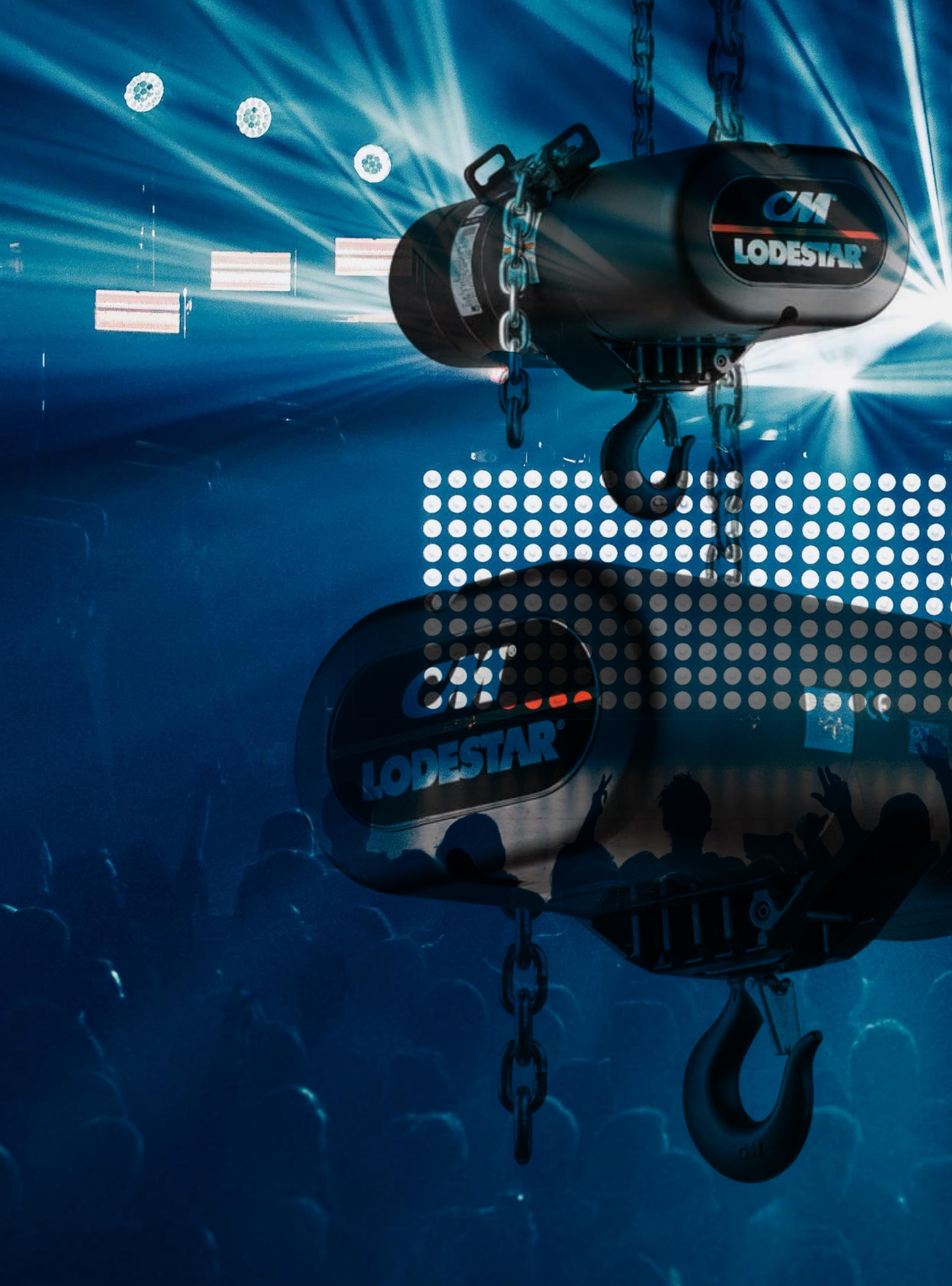
Double brake



Encoder



Eye bolt suspension

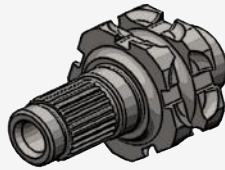


ELECTRIC CHAIN HOISTS / CM LODESTAR

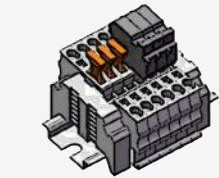
Available from 6,3 mm till 10 mm.
Meets or exceeds many national and international standards.



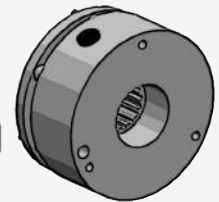
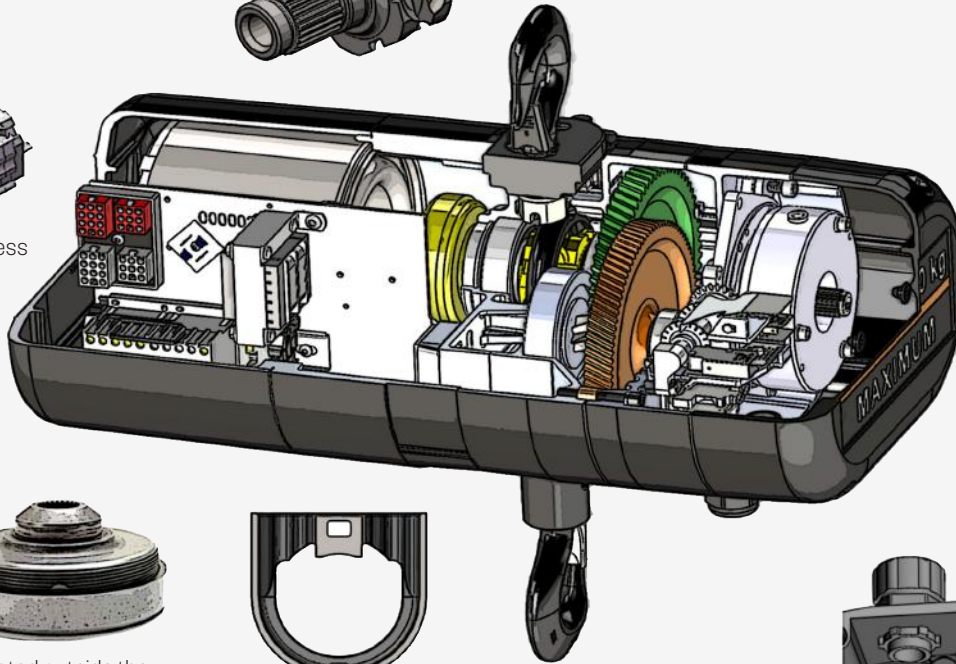
5 pocket liftwheel increases chain and liftwheel engagement while providing smoother lifting, less vibration and reduced chain wear.



Adjustable screw limit switch that will automatically stop the hook at any predetermined point when lifting (LV version).



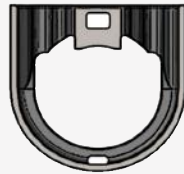
Provides easy access to controls.



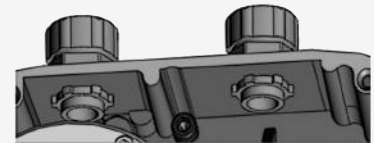
Heavy duty DC brake is standard. AC brake and double DC brake are also available.



OLP located outside the gearbox and easy to access

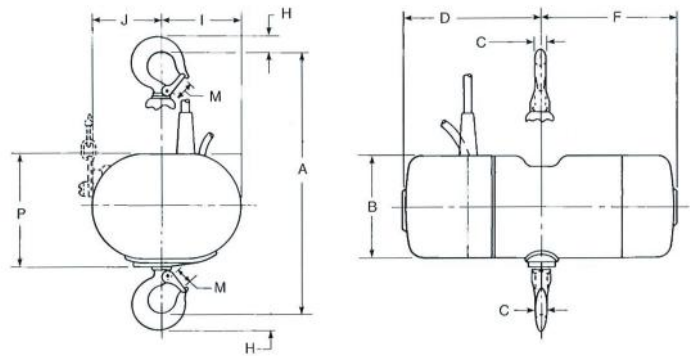


Stamped steel guide, coated, for a quiet operation.



Upgrade: IP 66 water-resistant for outdoor use.

External guide plate



LEGEND	D8 SERIES B, C, F (cm)	D8+ SERIES RRS (cm)	D8+ SERIES B, C, F (cm)	D8 / D8+ SERIES J, JJ, L, LL (cm)	D8 / D8+ SERIES R, RR (cm)	BGV-C1 F (cm)	BGV-C1 JJ, L, LL (cm)	BGV-C1 RR (cm)
A	43,0	63,1	43,0	47,1	65,5	43,0	47,1	65,5
B	15,4	19,4	15,4	19,4	19,4	15,4	19,4	19,4
C	1,7	2,9	1,7	2,2	2,9	1,7	2,2	2,9
D	30,0	27,6	30,0	25,5	25,5	30,0	25,5	25,5
F	22,7	31,1	22,7	33,0	33,0	22,7	33,0	33,0
H	2,5	3,8	2,5	3,0	3,8	2,5	3,0	3,8
I	11,3	15,9	11,3	17,6	14,2	11,3	17,6	14,2
J	10,7	16,3	10,7	14,5	17,9	10,7	14,5	17,9
M	2,5	3,8	2,5	2,8	3,3	2,5	2,8	3,3
P	16,8	23,9	16,8	20,8	20,8	16,8	20,8	20,8

ELECTRIC CHAIN HOISTS / D8

CM LODESTAR, D8 (LV OR DC)

With the Lodestar entertainment hoist, CM is one of the leading companies worldwide. Generations of users could and can still rely on the superb reliability and long service life of the Lodestar.

MAIN FEATURES:

- Sturdy: long operational life;
- Durable plated housing in black powder coating;
- Safety factor >5;
- Duty cycle: 30 min. at 240 s/h;
- FEM class: 2M;
- Complete range: 0,25 t - 2 t and 2 - 16 m/min;
- Special coated chain guide for proper chain passage and low noise level;
- Limit switches for easy setting of the hoist operation (only LV version);
- Colour: matt black finish;
- Protection class: IP66;
- 5-Pocket wheel: less vibrations and constant speed (smooth lifting);
- In LV 110V (low voltage control) or in DC (direct control).

INCLUSIVE:

- Chain bag type CM;
- Approx. 0,8 m control cable with CEE plug, 4 pin yellow (only LV version);
- Approx. 0,8 m power cable with CEE plug, 4 pin red;
- Upper and lower hook with latch;
- Carrying handles mounted on the body.

OPTIONAL FEATURES:

- Also available in 230V-1 phase-50Hz;
- Control voltage: 24V and 48V;
- Double brake;
- Latchlok safety hook;
- Lifetime warranty, ask for the conditions.



ARTICLE CODE	MODEL	WLL (t)	LIFTING SPEED (M/ MIN)	WEIGHT WITHOUT CHAIN (kg)	CHAIN Ø (mm) X NUMBER OF FALLS	DC / LV	STANDARD LIFTING HEIGHT (m)
TFN-500-20-LVD8	F	0,5	4	32	6,3 X 1	LV	20
TFN-500-20-DCD8	F	0,5	4	32	6,3 X 1	DC	20
TLN-1000-20-LVD8	L	1,0	4	56	7,9 X 1	LV	20
TLN-1000-20-DCD8	L	1,0	4	56	7,9 X 1	DC	20
TRRN-2000-20-LVD8	RR	2,0	4	66	7,9 X 2	LV	20
TRRN-2000-20-DCD8	RR	2,0	4	66	7,9 X 2	DC	20
TRRS-2000-20-LVD8	RRS	2,0	4	62	10 X 1	LV	20
TRRS-2000-20-DCD8	RRS	2,0	4	62	10 X 1	DC	20

ELECTRIC CHAIN HOISTS / D8+

CM LODESTAR, D8+ (LV OR DC)

With the Lodestar entertainment hoist, CM is one of the leading companies worldwide. Generations of users could and can still rely on the superb reliability and long service life of the Lodestar.

MAIN FEATURES:

- Sturdy: long operational life;
- Safety factor 8:1 according DIN 56950:2012 - SQP2;
- Duty cycle: 30 min. at 240 s/h;
- FEM class: 2 m;
- Complete range: 0,25 t - 1,3 t and 2 - 16 m/min;
- Special coated chain guide for proper chain passage and low noise level;
- Limit switches for easy setting of the hoist operation (only LV version);
- Colour: matt black finish;
- Protection class: IP66;
- 5-Pocket wheel: less vibrations and constant speed (smooth lifting);
- In LV 110V (low voltage control) or in DC (direct control).

INCLUSIVE:

- Chain bag type CM;
- Approx. 0,8 m control cable with CEE plug, 4 pin yellow (only LV version);
- Approx. 0,8 m power cable with CEE plug, 4 pin red;
- Upper and lower hook with latch;
- Carrying handles mounted on the body;
- Double brake.

OPTIONAL FEATURES:

- Also available in 230V-1 phase-50Hz;
- Control voltage: 24V and 48V;
- Lifetime warranty, ask for the conditions.



ARTICLE CODE	MODEL	WLL (t)	LIFTING SPEED (M/ MIN)	WEIGHT WITHOUT CHAIN (kg)	CHAIN Ø (mm) X NUMBER OF FALLS	DC / LV	STANDARD LIFTING HEIGHT (m)
TFN-500-20-LVD8+	F	0,5	4	33	6,3 X 1	LV	20
TFN-500-20-DCD8+	F	0,5	4	33	6,3 X 1	DC	20
TLN-1000-20-LVD8+	L	1,0	4	57	7,9 X 1	LV	20
TLN-1000-20-DCD8+	L	1,0	4	57	7,9 X 1	DC	20
TRRN-2000-20-LVD8+	RR	2	4	68	7,9 x 2	LV	20
TRRN-2000-20-DCD8+	RR	2	4	68	7,9 x 2	DC	20

ELECTRIC CHAIN HOISTS / D8

CM PROSTAR, 400V-3-50HZ, (LV OR DC)

Lightweight, quiet and portable, the CM Prostar electric chain motor is designed and built for the unique rigging needs encountered at small venues. Features an overload device that protects the hoist, operator and structure from damaging overloads.

MAIN FEATURES:

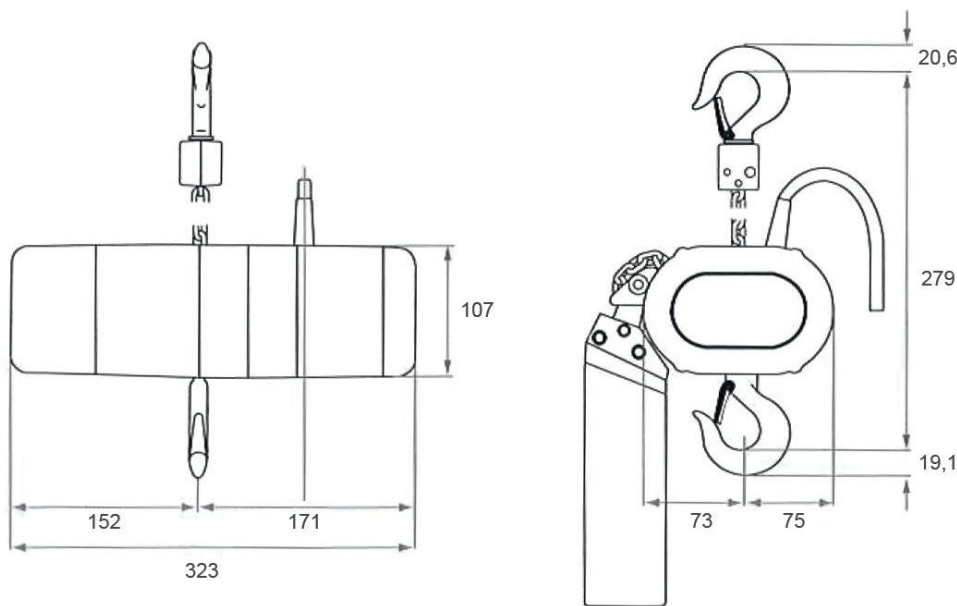
- Extremely low weight, only 10,5 kg;
- Colour: matt black finish;
- Strong aluminum alloy;
- Clutch to prevent lifting of excessive overloads;
- 10-Pocket wheel, quiet and smooth chain passage.

OPTIONAL FEATURES:

- Other hoisting speeds and work loads available, inquire about the possibilities;
- Rotating body hook;
- Double brake;
- Lifetime warranty, ask for the conditions.

INCLUSIVE:

- Chain bag type CM;
- Approx. 0,8 m power cable with CEE plug 4 pins red (400V);
- Approx. 0,8 m power cable with CEE plug 3 pins blue (LV for 230V);
- Approx. 0,8 m control cable with CEE plug 4 pins yellow (LV);
- Upper and lower hook with latch.



Single parts DC en LV models, single brake (mm).

ARTICLE CODE	WLL (T)	LIFTING SPEED (M/MIN)	WEIGHT WITHOUT CHAIN (KG)	DC / LV	CHAIN Ø (MM) X NUMBER OF FALLS	POWER	STANDARD LIFTING HEIGHT (M)
P-226-10-LV-1F	0,226	3	10,5	LV	4 X 1	230V - 1Ph - 50 Hz	10
P-250-10-LV	0,250	4	10,5	LV	4 X 1	400V - 3Ph - 50 Hz	10
P-250-10-DC	0,250	4	10,5	DC	4 X 1	400V - 3Ph - 50 Hz	10





ELLER 
ELPH2 1000kg

ELLER 
ELPHE1 500kg

CE
JÄRRYVÄRJÄHN SER NO
HÄLLEFTÄR
KÄTTINGSCHÄNNETTE EN 1675

HAND CHAIN HOISTS / ELLER

ELLER® PH2



High quality spur gear



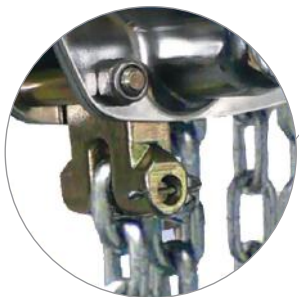
Standard OLP (excl. 0,25t)



Safety brake with two pawls



Ball bearing mounted sprocket shaft



End Stop



Chain EN 818-7



Hand chain



Cast hook clips



HAND CHAIN HOISTS / ELLER WITH OLP

ELLER® PH2

The ELLER PH2 is a consistent development of the successful hand hoist PH1 and is produced with the latest technology. Compared to the PH1, it is much lighter and provides better handling due to the compact design. Despite its lower weight, the work stability has been improved due to improved construction.

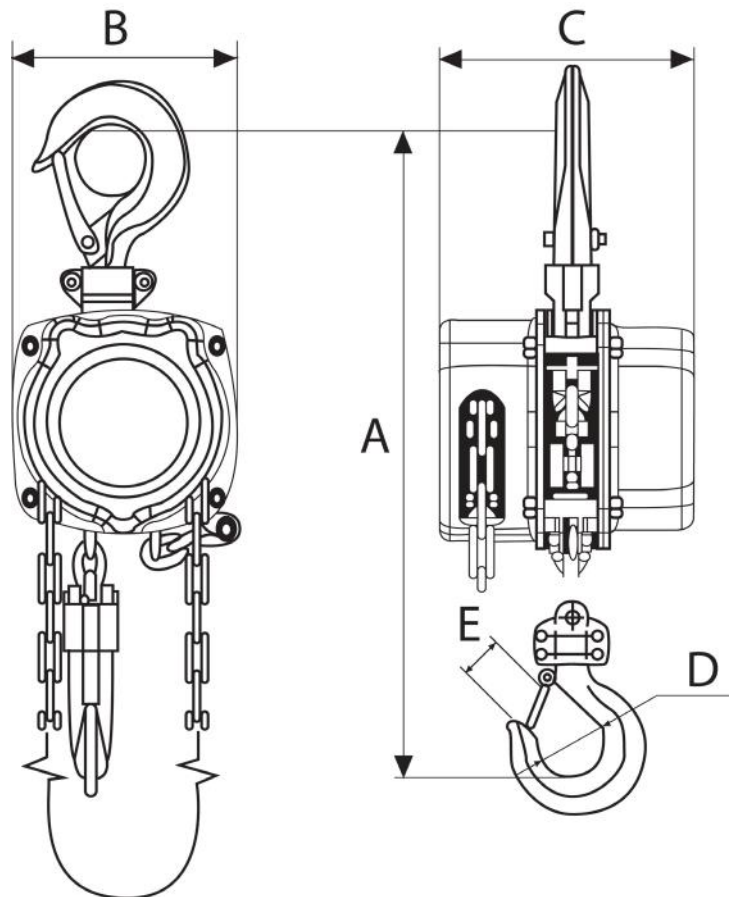
MAIN FEATURES:

- Dirt and rain have no effect on this hoist. All parts and housing are protected against corrosion;
- Durable plated housing in black powder coating;
- Ratchet type brake with independent twin pawls for reliability and greater safety;
- Precision bearings support the pinion shaft for smoother operation and increased mechanical efficiency;
- Forged swivel top and bottom hooks made of heat-treated, tempered steel;
- The hooks have robust forged safety catches;
- All parts like bolts, nuts and washers are galvanized. The gear side and hand wheel side covers are mounted together with the same nuts;

- Robust chain connection;
- European Grade 80 tempered and galvanized load chain according to EN-818-7;
- Standard lifting height 10m and hand chain height 9.5 m;
- Overload protection standard built in (excl. 0,25 t);
- **PH2 0,25 t hooks fit on a 3,25 t shackle.**

OPTIONAL FEATURES:

- Chain bag with quick link (see page 24);
- Available up to 30 t in orange;
- Other lifting heights available upon request.



ARTICLE CODE	WLL (t)	HAND CHAIN SIZE ø	STANDARD LIFTING HEIGHT (m)	DROP OF HAND CHAIN (m)	CHAIN Ø (mm) X NUMBER OF FALLS	HEADROOM A (mm)	PULLING FORCE (kg)	WEIGHT (kg)	B (mm)	C (mm)	D (mm)	E (mm)
ELPH2-00250-100-095-Z	0,25	5 x 25	10	9,5	4 x 1	259	22	16	95	100	30	22
ELPH2-00500-100-095-Z	0,5	5 x 25	10	9,5	5 x 1	309	24	19	114	110	33	22
ELPH2-01000-100-095-Z	1,0	5 x 25	10	9,5	6 x 1	373	31	25	152	139	40	28

HAND CHAIN HOISTS / ELLER

ELLER® PHE1

A completely new line of economy hand chain hoists, the PHE1, without OLP.

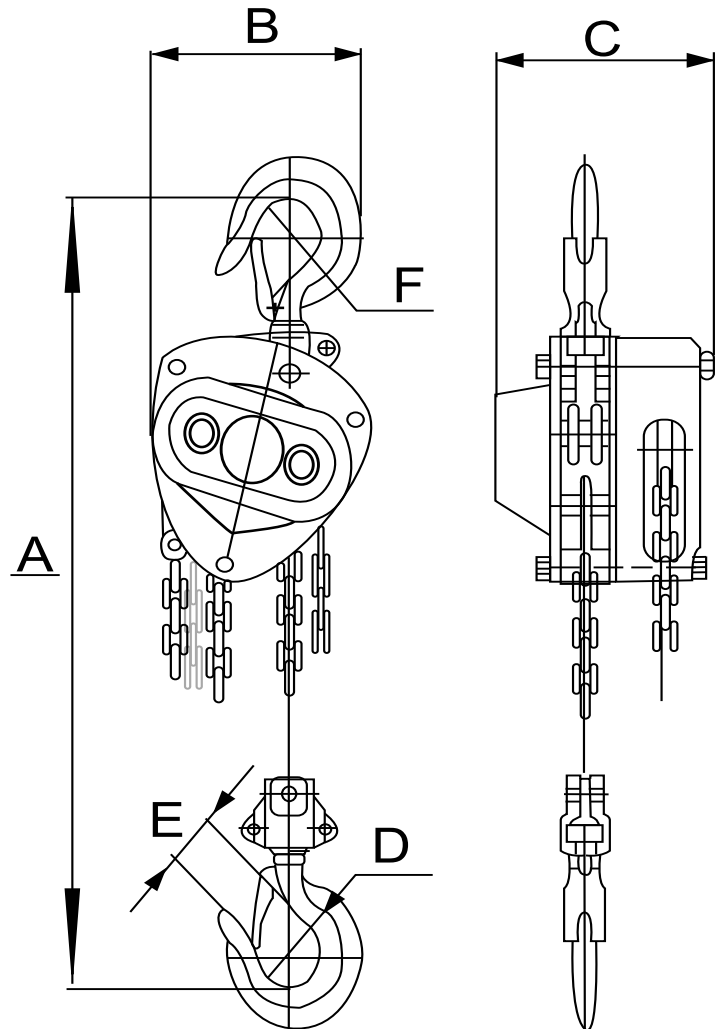
Solid and robust for when you need it quick and easy. PHE1 hoists are good quality hoists for a competitive price in workloads 0,5 t and 1 t.

MAIN FEATURES:

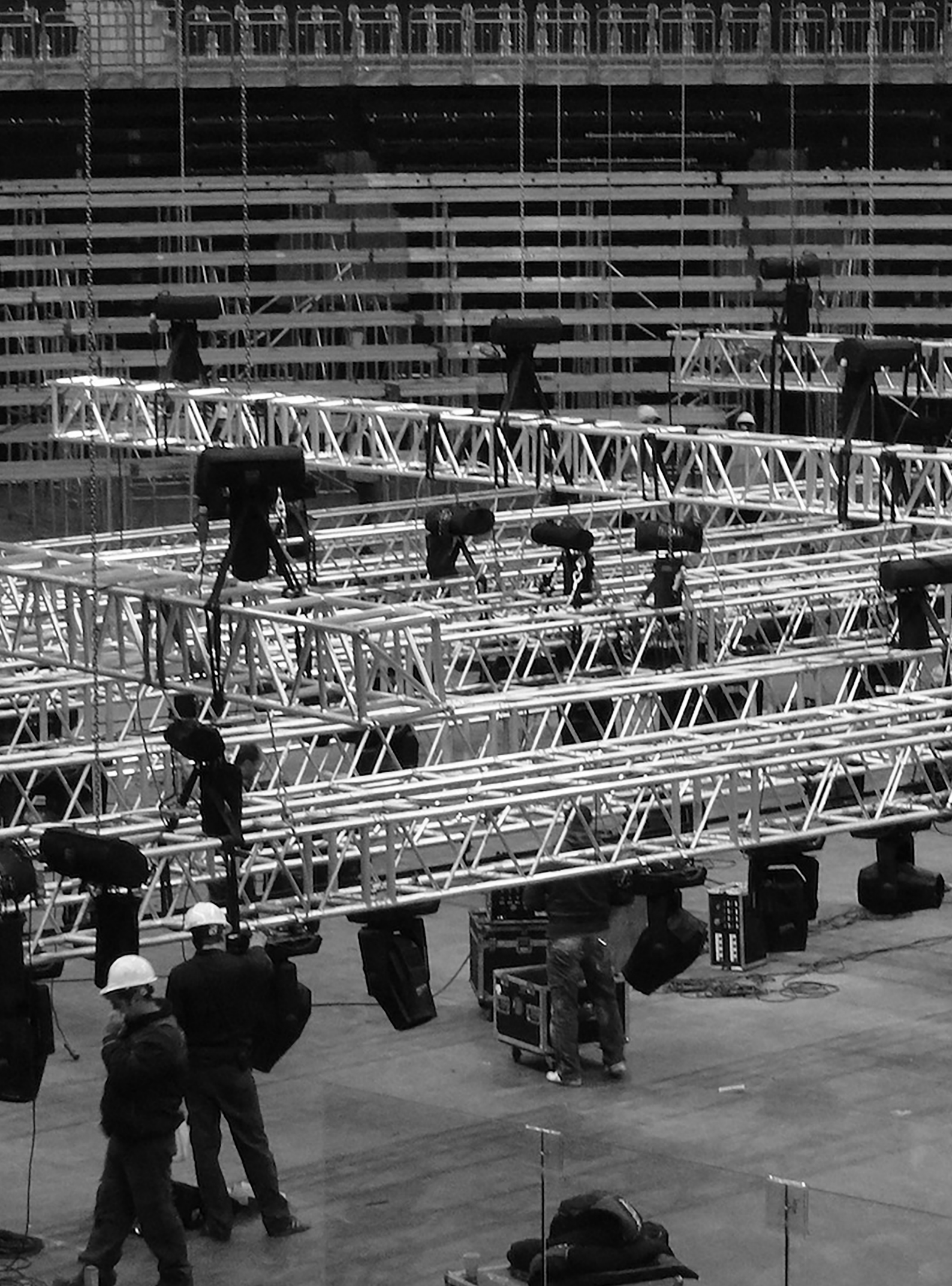
- Black;
- European Grade 80 tempered black load chain according to EN-818-7;
- Galvanized hand chain;
- Good value for money;
- Standard lifting height 10 m.
- optional features:
- Chain bag;
- Other lifting heights available upon request.

WEBSITE:

- See our website www.lr.nl for the prices of our standard lifting heights (3 m - 12 m), other lifting heights available on request;
- Please contact one of our employees via +31 (0) 75 - 650 47 52 or send an e-mail to info@lr.nl.



ARTICLE CODE	WLL (t)	HAND CHAIN SIZE ϕ	STANDARD LIFTING HEIGHT (m)	DROP OF HAND CHAIN (m)	CHAIN ϕ (mm) X NUMBER OF FALLS	HEADROOM A (mm)	PULLING FORCE (kg)	WEIGHT (kg)	B (mm)	C (mm)	D (mm)	E (mm)	F (mm)
ELPHE1-00500-100-095-Z	0,5	5 x 24	10	9,5	5 x 1	285	26	19	120	116	34	24	37
ELPHE1-01000-100-095-Z	1,0	5 x 24	10	9,5	6 x 1	332	32	25	147	136	40	32	40



HOIST ACCESSORIES

FOR THE RIGHT ASSOCIATED ACCESSORIES!

You are the proud owner of a CM Lodestar or a CM Prostar electric chain hoist. Not the cheapest, but the best electric hoist in the entertainment industry. A quality product with many applications. Good tools must be well maintained and need replacement of parts on time. In order to ensure optimal performance and safety, official CM parts are required.

Flightcases for CM or GIS entertainment hoists, Chain Bags and Motor Covers for the Lodestar and Prostar Hoists from CM. The Chain Bags are rectangular bags for electric chain hoists used in the entertainment industry. This for use in upright or inverted position.

The products on the following pages are just a fraction of what we offer, more products are found in our online webshop where you can find all the necessary acquisitions to suit your needs.

Available in 7 sizes, the bags are held by two high resistance polyester straps which take the weight of the chain and distribute it evenly over the bracket/mounting kit. The strength and flexibility of the fabric, the quality of the sewing and the certified materials ensures the chain bags remain the unrivalled lifting accessory.

The Motor Covers, in 3 sizes, are designed for Classic and New Lodestar inverted hoist use.

Along with this we have various (multicore) cables, hooks and break-out-boxes.

Our salesteam is available for any advise in purchase or use of the accessories.

Please call + 31 (0) 75 650 47 52 or send an email to info@lr.nl.



SPARE PARTS LODESTAR CLASSIC



SPARE PARTS LODESTAR NEW LINE



SPARE PARTS PROSTAR

HOIST ACCESSORIES

GIS + CM CHAIN BAGS

Chain bags for the CM Lodestar or CM Prostar electric hoists. CE marked snap hooks and quick links.

MAIN FEATURES BAG:

- Safety factor 5:1;
- Fabric: 840 Nylon PVC coated;
- 28 - 31% elongation value;
- Test UNI ISO 13934-1:2000;
- N502 medium breaking load value;
- Test UNI 4818:1992 part 9.

MAIN FEATURES BELT:

- Polypropylene 5 cm;
- 25 - 27% elongation value;
- 240 filaments;
- 1.100 kg minimum breaking point;
- 175° Celsius melting point.

OPTIONAL FEATURES:

- CM mounting kit: a bracket & bolt for mounting on the hoist and an open end link to mount dead end part of the chain to the hoist body.



CTRSCBL010 - CTRSCBL015
for Lodestar



CTCM21 - CTCM22
for Prostar



CTRSTWN10K - CTRSTWN20K



LP_9400.3208.3
for GIS

ARTICLE CODE	TYPE X DIMENSIONS (cm) EXCL. HOOK AND BELT	CHAIN LENGTH (m) X CHAIN Ø (mm) 75% FILLED
CTRSCBL010	Rectangular 20 x 17 x 42	36 x 6,3 / 31 x 7 / 26 x 7,9 / 12 x 10
CTRSCBL012	Rectangular 20 x 17 x 58	54 x 6,3 / 42 x 7 / 31 x 7,9 / 17 x 10
CTRSCBL013	Rectangular 20 x 17 x 34	27 x 6,3 / 22 x 7 / 18 x 7,9 / 10 x 10
CTRSCBL014	Rectangular 20 x 17 x 88	93 x 6,3 / 74 x 7 / 55 x 7,9 / 30 x 10
CTRSCBL015	Rectangular 20 x 17 x 98	108 x 6,3 / 90 x 7 / 64 x 7,9 / 40 x 10
CTCM21	Rectangular 17 x 13 x 30	24 x 4
CTCM22	Rectangular 17 x 13 x 38	32 x 4
CTRSTWN10K	Mounting kit chain bag; large frame Lodestar	-
CTRSTWN20K	Mounting kit chain bag; small frame Lodestar	-
LP_9400.3208.3	Rectangular 21x19x42	56x4/28x5,5/20x7/10x9/6x11
LP_9400.3209.3	Rectangular 21x19x59	75x4/40x5,5/30x7/16x9/10x11
LP_9400.3210.3	Rectangular 21x19x94	108x5,5/55x7/35x9/28x11

ELLER® CHAIN BAGS

Chain bags with hook for the ELLER hand chain hoists.



* Hoist included

ARTICLE CODE	TYPE X DIMENSIONS	FOR HAND CHAIN HOIST	LIFT OF HEIGHT (m)*
ELHTTA501E	Round, Ø 150 mm x 200 mm	0,25 t	6
ELHTTA501S	Round, Ø 175 mm x 225 mm	0,5 t	10
ELHTTA501	Round, Ø 200 mm x 370 mm	1 t	12

GIS FLIGHTCASES

MAIN FEATURES:

- "GIS" logo engraving on two sides;
- 9 mm wooden panels with strong black hexa finish;
- Impact foam in the lid;
- Wooden cradles;
- 4 wheels (100 mm) with support plates;
- Built-in retractable handles and butterfly locks;
- Metal reinforced flat corners.



CTFC-2LP500

CTFC-2LPM

CTFC-4LPM

ARTICLE CODE	DESCRIPTION	WEIGHT (kg)	L X W X H
CTFC-2LP500	Flight Case for 2 x GIS LP	36	790 x 495 x 600 mm
CTFC-2LPM	Flight Case for 2 x GIS LPM	26,5	665 x 470 x 630 mm
CTFC-4LPM	Flight Case for 4 x GIS LPM	40,5	800 x 630 x 630 mm

CM FLIGHTCASES

MAIN FEATURES:

- "CM" logo engraving on two sides;
- 9 mm wooden panels with strong black hexa finish;
- Impact foam in the lid;
- Wooden cradles;
- 4 wheels (100 mm) with support plates;
- Built-in retractable handles and butterfly locks;
- Metal reinforced flat corners.



CTFC-2F-NL

CTFC-1F-NL / CTFC-IRRS

CTFC-4P

ARTICLE CODE	DESCRIPTION	WEIGHT (kg)
CTFC-1F-NL	1 x CM Lodestar, type F, new line	23
CTFC-2F-NL	2 x CM Lodestar, type F, new line	37
CTFC-1L-NL	1 x CM Lodestar, type L, new line	30
CTFC-IRRS	1 x CM Lodestar, type RRS	30
CTFC-2P	2 x CM Prostar	27
CTFC-4P	4 x CM Prostar	38

HOIST ACCESSORIES

ACCESSORIES



CTCOVER



CTSMART1



COON24015K

ARTICLE CODE	DESCRIPTION
CTCEES4R	CEE plug red; 4 pins 400V, separate (M)
CTCEEK4G	CEE plug yellow; 4 pins 110V, separate (F)
CTCB10	Nylon handle each
CTSMART1	Pickle
CTCOVER-L	Weather cover for large frame Lodestar hoists
CTCOVER-LPM	Weather cover for GIS LPM
CTCOVER-LP2500	Weather cover for GIS LP2500
CTCOVER-S-NL	Weather cover for small frame Lodestar hoists
COON24015K	Adjustable end stop kit for small frame (6,3 x 18,9 mm)
COON24016K	Adjustable end stop kit for large frame (7,9 x 21,7 mm)
COON-24785	Nylon shock absorber for small frame 6,3 x 18,9 mm)
COON-24786	Nylon shock absorber for large frame (7,9 x 21,7 mm)

HOIST ACCESSORIES

BREAK-OUT

- Harting break-out-box with 4 x CEE plugs;
- Break-out Socapex F19 pins to 4 x CEE plugs.



LV

ARTICLE CODE	BREAK-OUT TYPE	TYPE	COLOUR
CTBOS4R	Socapex	19-p Socapex <--> 4 CEE 4-p	Red
CTBOS4G	Socapex	19-p Socapex <--> 4 CEE 4-p	Yellow
CTBOH4R	Harting	Harting <--> 4 CEE 4-p	Red
CTBOH4G	Harting	Harting <--> 4 CEE 4-p	Yellow



LV + DC

MULTICORE CABLES LV / DC

Multicore cables for power or control. 18-core for 4 motors with Harting or Socapex.

MAIN FEATURES:

- Flexible;
- Long life time.

OPTIONAL FEATURES:

- Other lengths available on request.



CTMKMHV20



CTMKMSV20

ARTICLE CODE	TYPE	LENGTH (m)	CONSTRUCTION
CTMKMHV20	Harting	20	18 x 2,5 ²
CTMKMSV20	Socapex	20	18 x 2,5 ²

MOTOR POWER CABLES

Motor power cables with CEE 4-p 16A red plug and connector.

MAIN FEATURES:

- Flexible;
- Long life time;

OPTIONAL FEATURES:

- Other lengths available on request.



ARTICLE CODE	LENGTH (m)	CONSTRUCTION	ARTICLE CODE	LENGTH (m)	CONSTRUCTION
CTMKS05R	5	4 x 2,5 ²	CTMKS25R	25	4 x 2,5 ²
CTMKS10R	10	4 x 2,5 ²	CTMKS30R	30	4 x 2,5 ²
CTMKS15R	15	4 x 2,5 ²	CTMKS40R	40	4 x 2,5 ²
CTMKS20R	20	4 x 2,5 ²			

MOTOR CABLES FOR POWER AND CONTROL

Motor cables with CEE-4p red plug and yellow plugs.

MAIN FEATURES:

- Flexible;
- Long life time;
- With CEE 4-p yellow and 16A red plug and connector.

OPTIONAL FEATURES:

- Other lengths available on request.



ARTICLE CODE	LENGTH (m)	CONSTRUCTION 2 CABLES, EACH:	ARTICLE CODE	LENGTH (m)	CONSTRUCTION 2 CABLES, EACH:
CTMKM05	5	4 x 2,5 ²	CTMKM25	25	4 x 2,5 ²
CTMKM10	10	4 x 2,5 ²	CTMKM30	30	4 x 2,5 ²
CTMKM15	15	4 x 2,5 ²	CTMKM40	40	4 x 2,5 ²
CTMKM20	20	4 x 2,5 ²			



Libra digital loadcell
kinesys

1: 0V	2: ANALOG	1: 0V	2: DIN+
3: 5V	4: 24V	3: DIN+	4: 24V

ANALOG DIGITAL

CE

07040-5120

CONTROLLERS AND LOAD CELLS

CONTROLLERS OF REPUTABLE BRANDS!

Our controllers have been produced by renowned manufacturers. Manufacturers who know what they're doing.

Sonoss designs and manufactures controllers for electric chain hoists. They offer a standard range dedicated to the needs of the entertainment industry. These controllers are made for both low voltage and direct control hoists and come in various formats: wall-mounted, metal housing, rack or flightcase.

The controllers are versatile and offer extensive possibilities.

Sonoss controllers, our technical department is at your disposal. Thanks to the SolidWorks 3D software, you are able to visualize the solutions we offer and to validate easily any of their aspects.

We offer and a quick design phase and production process, from prototype to end product, respecting the current norms.

THE KINESYS AND BROADWEIGH LOAD CELLS WILL MAKE RIGGING EVEN SAFER!

Both user-friendly systems were designed to assist the rigger when monitoring the loading and to possibly record this in a log file. This is an active contribution to safety; knowledge is power and this is now child's play for both systems.

Our salesteam is available for any advise in purchase or use of controllers or load cells.

Please call + 31 (0) 75 650 47 52 or send an email to info@lr.nl.



CONTROLLERS

CONTROLLER IN WATERTIGHT CASE, 2 CHANNEL

Designed for small-scale applications, this compact and lightweight controller can operate simultaneously 2 electric chain hoists. It will be perfect for audio and video equipment rigging, such as lifting a line-array or a LED screen. The controller can be equipped with a 16A or a 32A CEE connector for the power supply, depending on your usual electrical environment.



CONTROLLER IN WATERTIGHT CASE, 4 CHANNEL DC

Designed to suit the needs of rental and rigging companies looking for a simple and reliable control solution, this hoist controller can control simultaneously 4 electric chain hoists. A durable and lightweight controller that can be transported easily on any of your job.

As an option, the controller can also receive an additional Harting or Socapex output, allowing the use of a multicore cable between the controller and the hoists.

- Thermal magnetic circuit breakers protect your hoists against power surges and shorts whilst allowing the intensity peak that occurs when starting electric hoists;
- The emergency stop button with keylock offers an immediate and grouped stop of the hoists when a dangerous situation occurs;
- Phases indicators lights to check your power input;
- Ready indicator confirms that the controller is ready for operation.

MAIN FEATURES:

- Strong and waterproof case makes this controller resistant to impacts, dust and rain;
- Galvanized steel framework fitted inside the controller provides a strong and durable anchor to the components;

SPECIFICATIONS:

- Power: 380-415V / 3 Ph / 47-63 Hz;
- Input connector: 400V CEE Plug 32A - 3P+N+E;
- Outputs connectors: 400V CEE Plugs 16A - 3P+E;
- Optional extra output connector: 1x Socapex 419 or 1x Harting 16.



CONTROLLERS



ARTICLE CODE	OUTPUT EXTRA CONNECTOR	LV/DC	WEIGHT (kg)	EXTERNAL SIZE (mm)	NUMBER OF CHANNELS
CTUMCDC02V	-	DC	5,6	336 x 300 x 154	2
CTUMCDC02VI	-	DC	5,6	336 x 300 x 154	2
CTUMCDC04VH	1x Harting	DC	10,3	466 x 364 x 182	4
CTUMCDC04VS	1x Socapex	DC	10,3	466 x 364 x 182	4
CTUMCDC04V	-	DC	10,3	466 x 364 x 182	4
CTUMCDC06V	-	DC	10,3	466 x 364 x 182	6
CTUMCDC08V	-	DC	16,5	575 x 428 x 214	8
CTUMCLV02V	-	LV	6	466 x 364 x 182	2
CTUMCLV04V	-	LV	16,5	575 x 428 x 214	4

OPTIONAL:

- Available for 4 - 6 - 8 channels;
- Fast Action Button (FAB);
- Master - Slave;
- Handset;
- Low voltage control.



2 ch Low voltage control



4 ch Low voltage control

CONTROLLERS

NEW SONOSS DIGITAL CONTROLLERS

New in the range of controllers; specially for touring applications.

This new line is for direct controlled, or low voltage hoists. Available in a 12 channel version. Controller comes in a 12U with wheels for easy handling. Standard output is CEE 4pins connector. Other connectors like Socapex and Harting are possible. Emergency stop is on SIL 2 level. Controller can be operated directly on the controller or via a remote control or wireless with the optional RTX1 receiver.

The remote control RT72-W-WL can be wired as wireless remote control, and up to 72 channels. Connect 6 x 12 ch touring controllers (LV or DC) with a single digital wire cable link or wireless link.

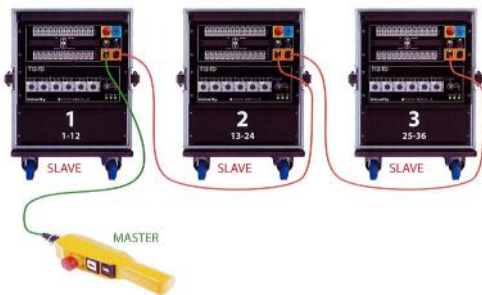
MAIN FEATURES:

- Main power 400V/50Hz;
- Height 12 way with wheels 637 mm, without wheels 495 mm;
- Inner dimension 19" 3U;
- Connector main CEE 5 pole 32A;
- Output power include industry standard Socapex & Harting connections;
- Emergency stop SIL 2;

- With remote;
- Breaker protection for each pair of hoists;
- Automatic phase reversal correction;
- Electromagnetic Compatibility (EMC) certificate.

MORE INFORMATION?

Please contact our sales team for more information or a quotation. Call +31 (0) 75 - 650 47 52 or send an e-mail to info@lr.nl.



Remote Control



RTX1 receiver



Remote control RT72-W-WL

NEW SONOSS DIGITAL WALL MOUNT CONTROLLERS

MAIN FEATURES:

- Cable entries on top or bottom side;
- 12-72 channels;
- Local or remote control;
- Hybride 4 in 1 individual hoist protection;
- Group stop;
- Wired or wireless remote.



Digital TD48WWW

CONTROLLER IN FLIGHTCASE

MAIN FEATURES:

- Operation direct on the controller;
- With 4 pins CEE plugs;
- For direct control hoists (DC) or low voltage hoists (LV).



LV



DC

ARTICLE CODE	NUMBER OF CHANNELS	LV / DC
CTUMC04VF	4	DC
CTUMC06VF	6	DC
CTUMC08VF	8	DC
CTUMC12VF	12	DC
CTUMC04F	4	LV
CTUMC06F	6	LV
CTUMC08F	8	LV
CTUMC12F	12	LV

CONTROLLER FOR WALL MOUNTING

MAIN FEATURES:

- Controller for wall mounting;
- Direct cable in and output;
- For direct control hoists (DC) or low voltage hoists (LV);
- Operation directly on the controller.



ARTICLE CODE	NUMBER OF CHANNELS	LV / DC
CTUMC04VW	4	DC
CTUMC06VW	6	DC
CTUMC08VW	8	DC
CTUMC12VW	12	DC
CTUMC04W	4	LV
CTUMC06W	6	LV
CTUMC08W	8	LV
CTUMC12W	12	LV

CONTROLLER IN FLIGHTCASE, REMOTE

MAIN FEATURES:

- With remote control;
- With 4 pins CEE plug;
- For direct control hoists (DC) or low voltage hoists (LV);
- Operation per remote control (remote control cable length standard 15m);
- With automatic phase detection.



LV



DC

ARTICLE CODE	NUMBER OF CHANNELS	LV / DC
CTUMC04ADV	4	DC
CTUMC06ADV	6	DC
CTUMC08ADV	8	DC
CTUMC12ADV	12	DC
CTUMC04AD-4F	4	LV
CTUMC06AD-4F	6	LV
CTUMC08AD-4F	8	LV
CTUMC12AD-4F	12	LV

CONTROLLER FOR WALL MOUNTING, REMOTE

MAIN FEATURES:

- Controller for wall mounting;
- Direct cable in and output;
- For direct control hoists (DC) or low voltage hoists (LV);
- Operation per remote control (remote control cable length standard 15m);
- With automatic phase detection.



Remote control

ARTICLE CODE	NUMBER OF CHANNELS	LV / DC
CTUMC04ADW	4	DC
CTUMC06ADW	6	DC
CTUMC08ADW	8	DC
CTUMC12ADW	12	DC
CTUMC04ADW	4	LV
CTUMC06ADW	6	LV
CTUMC08ADW	8	LV
CTUMC12ADW	12	LV

CONTROLLERS

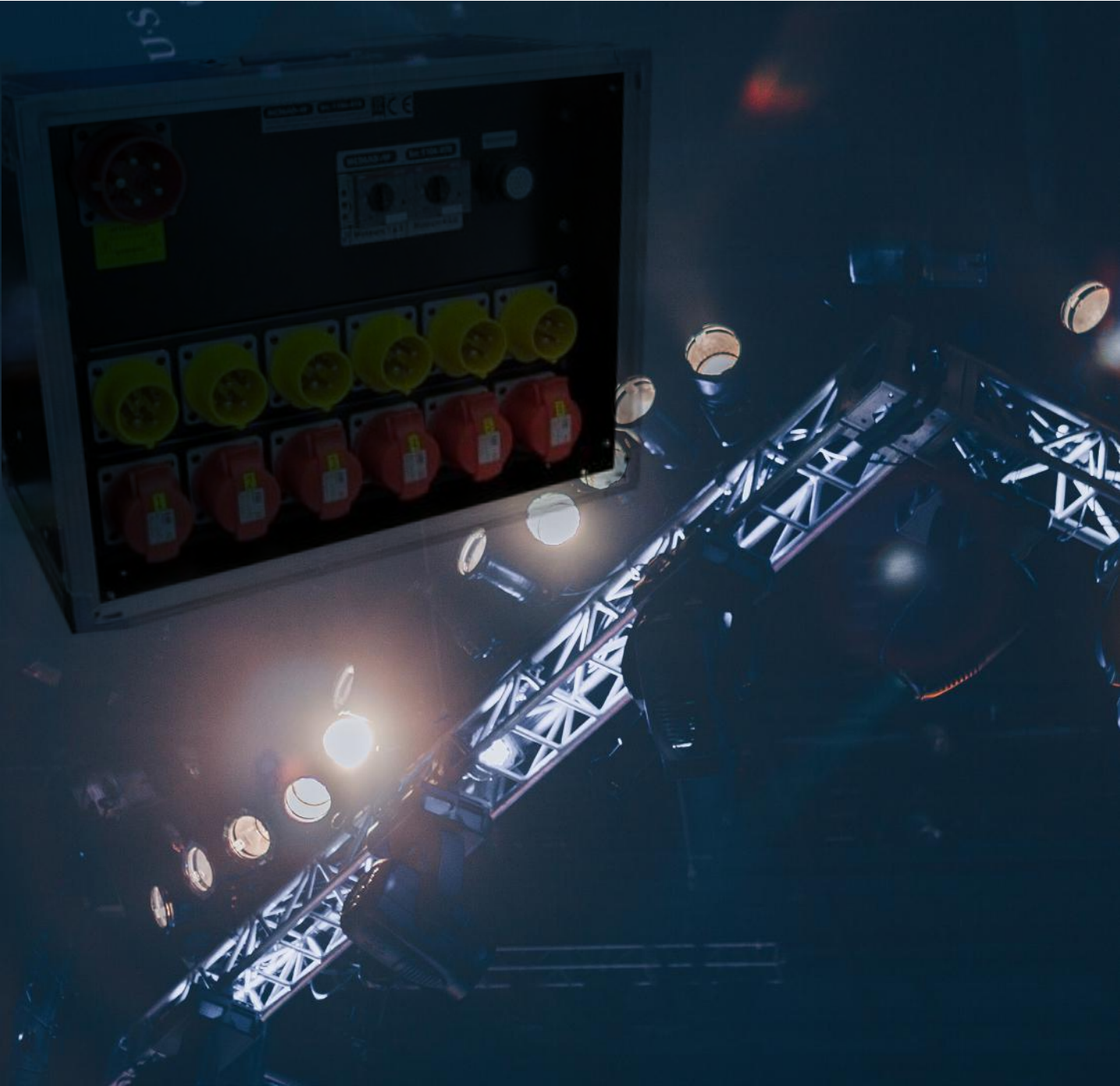
HAND CONTROLLER

MAIN FEATURES:

- Operation direct on the hand controller;
- With 4 pins CEE plug;
- For direct control hoists (DC);
- Including E-stop.



ARTICLE CODE	NUMBER OF CHANNELS
CTPLE-30-010	1
CTPLE-30-020	2



G-GUARD LOAD ARRESTER, UP TO 1T

Load Arresters are an effective system for automatically stopping the fall of an overhead load, protecting the load while at the same time reducing the chance of injury to anyone nearby. If the load enters a free-fall the cable is pulled out at an accelerating rate and when the activation speed is reached the braking system engages and brings the load to a smooth and cushioned stop.

MAIN FEATURES:

- Maximum working load ranging from 300 - 1.000 kg;
- Maximum stopping distance: approx. 1 m;
- Choice of cable lengths: 7 m, 10 m, 12 m, 15 m, 18 m, 20 m, 24 m;
- According European Directive 2006/42/EC;
- Max. running speed 0,6 m/s.



ARTICLE CODE	WLL (T)	CABLE LENGTH (M)	MAX RUNNING SPEED M/S	H X B X D (MM)	BREAKING DISTANCE (M)	WEIGHT (KG)
GSE-0300-1-10G	0,3	10	0,6	480 x 225 x 135	0,3 - 1,0	9,3
GSE-0500-3-10G	0,5	10	0,6	620 x 290 x 135	0,3 - 1,0	16,1
GSE-0500-2-24G	0,5	24	0,6	600 x 295 x 190	0,3 - 1,0	20,0
GSE-1000-1-10G	1,0	10	0,6	670 x 290 x 160	0,3 - 1,0	22,1

LOAD CELLS

KINESYS LIBRA LOAD CELLS

A very compact load cell built-in in a shackle.

Two versions are available: a 3,25 t version and a 4,75 t version. These capacities provide a safety factor of more than 10 at a safe working load of 1 t and 2 t, respectively. The load cells can be linked with standard XLR4 cables. Power is supplied from the basic power supply unit or from the Pro power supply unit. With the Pro unit loads are displayed on a LCD display and up to 75 load cells can be supplied with power. With the basic unit loads have to be read out on a separate PC and up to 25 cells can be supplied with power. Load cells can also be connected directly to the DigiHoist controller.



See our website www.lr.nl for the full catalogue or ask one of our employees.

Via libra watch and libra wifi the load cell data can be read out on a tablet or smartphone.

ARTICLE CODE	DESCRIPTION
KI-LIB-00-0010	Load cell 3,25 t - shackle cable version
KI-LIB-00-0020	Load cell 4,75 t - shackle cable version
KI-LIB-00-0030	Load cell basic power supply unit
KI-LIB-00-0040	Load cell professional power supply unit

BROADWEIGH LOAD CELLS, WIRELESS

New generation 2.4 GHz Wireless load monitoring sensors.



BW-WSS
Wireless wind speed sensor



BW-HR
Wireless Handheld Display



BW-CASE-B
New compact case



BW-S475 & BW-S325
Wireless Stainless steel bow shackle including black surface treatment.



BW-BSU-E
Wireless USB Base Station



BW-BSD
Wireless Dongle Base Station



BW-AR
Active repeater

BROADWEIGH LOAD CELLS, WIRELESS

Dynamic Load Monitoring Equipment - BroadWeigh.

BroadWeigh™ portable wireless load monitoring system is designed to assist rigging and technical professionals. The system provides static and dynamic peak loads in real-time to ensure no point is overloaded. Simple and comprehensive in nature, the wireless system offers quick and easy set up.

Incorporating stainless steel shackle and a high accuracy load pin with a unique small head height design, the system provides up to 800 metres wireless range. BroadWeigh can be expanded to suit individual requirements by simply adding additional load cells.

MAIN FEATURES:

- New Generation 3 now released
- Smart Sleep protects battery life whilst monitoring
- Comfortable in the most challenging RF environments
- Easy power cycle with one swipe using new magnetic fob
- New bow brings superior tolerances, finish and durability
- Unit conversion for kg, lbs, tonnes, ton, ton (US), kN
- 3250 kg or 4750 kg weight range
- Accuracy typically $\pm 1\%$ of current load or ± 25 kg (whichever is the greater value)
- Fully weatherised (IP67)
- Machinery Directive 2006/42/EC compliant
- Zero Trim Shackle
- 5:1 safety factor
- Anti-rotational bracket
- Supplied pre-calibrated



ARTICLE CODE	DESCRIPTION
BWSHK3	Load cell 3,25t shackle wireless
BWSHK4	Load cell 4,75t shackle wireless
BWHR	Handheld display
BWBSU-E	USB Base station extended range
BW-AR	Active repeater for T24 wireless Telemetry
BWWSS	Wireless wind speed sensor
BW-LOG100	Data logging software package for advanced monitoring up to 100 channels
BW-CASE-A*	Case on wheels for max. 16 cells, excl. inserts
BW-CASE-A-12	Case on wheels with 4 inserts for 12 cells, handheld, USB receiver and active repeater
BW-CASE B*	Case for max. 8 cells, excl. inserts for shackles, incl. lid enclosure for holding hand held, base station, active repeater, USB drive
BW-CASE-B-8	Case with 2 inserts for 8 cells and lid enclosure for holding hand held, base station, active repeater, USB drive
BW-INSERT-A	Insert for 3,25t shackles; 4 shackles in 1 insert
BW-INSERT-B	Insert for Handheld, USB receiver, active repeater
BW-INSERT-C	Insert for 4,75t shackles; 4 shackles in 1 insert

* a case A always need 4 inserts; a case B always needs 2 inserts



OUR OWN BRAND ELLER®!

Louis Reyners offers a wide arranged group of products under our own brand named ELLERchain. These products are of the highest quality and are continually being developed for improvement. These competitive priced items are quickly available from stock.

In our ELLER product line are the following products included:

- Beam clamps;
- Rack Jacks;
- Tools;
- Buckle straps;
- Hand chain hoists;
- Hand pallet trucks;
- Shackles;
- Webbing slings;
- Mechanical- and hydraulic jacks;
- Lever hoists;
- Round slings;
- Ratchet lashings;
- Soft steels;
- Grip pullers;
- Steels;
- Fall protection.

Our salesteam is available for any advise in purchase or use of the rigging products. Please call + 31 (0) 75 650 47 52 or send an email to info@lr.nl.

RIGGING PRODUCTS

ELLERSLING ROUND SLINGS

Ellersling polyester round slings are used when materials like chain or wire rope could damage the load.

MAIN FEATURES:

- According to standard EN 1492-2;
- Safety factor 7;
- Label in protective cover;
- Computerized stitching;
- Double woven jacket;
- Polyester;
- Sealed per piece with CE declaration and manual.



OPTIONAL FEATURES:

- Other capacities and lengths available on request.
- Printing on label of company logo / name on request possible.

ARTICLE CODE	WLL (t)	CIRCUMFERENCE (m)	EFFECTIVE WORKING LENGTH (m)	QUANTITY
ESER01-02Z	1	2	1,0	50
ESER01-03Z	1	3	1,5	45
ESER01-04Z	1	4	2,0	35
ESER01-06Z	1	6	3,0	20
ESER02-02Z	2	2	1,0	45
ESER02-03Z	2	3	1,5	35
ESER02-04Z	2	4	2,0	20
ESER02-06Z	2	6	3,0	15



Label with barcode

Colour	Safe Working Load				
	1	0,8	2	1,4	1
	Straight lift	Choked lift	Parallel	$\alpha = \text{up to } 45^\circ$	$\alpha = 45^\circ \text{ up to } 60^\circ$
WLL (t)					
1	1	0,8	2	1,4	1
2	2	1,6	4	2,8	2

ELLER® SOFT STEELS

MAIN FEATURES:

- For extended temperature range, max. 150°C;
- According to EN 1492-2; 13414-1 and 13414-3;
- Round sling with steel wire rope instead of the normal polyester lining.

OPTIONAL FEATURES:

- Other capacities and lengths available on request.
- Printing or embroidery of company logo / name on request possible.



ARTICLE CODE	WLL ACCORDING DGUV17 (10:1) (t)	WLL 5:1 (t)	CIRCUMFERENCE (m)	EFFECTIVE WORKING LENGTH (m)	QUANTITY
ESER01-01SK	0,5	1	1	0,5	30
ESER01-02SK	0,5	1	2	1,0	30
ESER01-03SK	0,5	1	3	1,5	25
ESER01-04SK	0,5	1	4	2,0	15
ESER02-01SK	1,0	2	1	0,5	25
ESER02-02SK	1,0	2	2	1,0	20
ESER02-03SK	1,0	2	3	1,5	20
ESER02-04SK	1,0	2	4	2,0	10
ESER02-05SK	1,0	2	5	2,5	10
ESER02-06SK	1,0	2	6	3,0	10
ESER03-03SK	1,5	3	3	1,5	5
ESER03-04SK	1,5	3	4	2	5
ESER04-03SK	2,0	4	3	1,5	5
ESER04-04SK	2,0	4	4	2	5



RIGGING PRODUCTS

ELLERSTRAP LASHINGS WITH BUCKLE

MAIN FEATURES:

- 1 part;
- Black lashing.

OPTIONAL FEATURES:

- Other capacities and lengths available on request;
- Individual printing on lashing strap and other Colours available on request.



ARTICLE CODE	LENGTH (m)	LASHING WIDTH (mm)	PU QUANTITY
ESG25L1-01	1	25	100
ESG25L1-02	2	25	100
ESG25L1-03	3	25	100
ESG25L1-04	4	25	100
ESG25L1-05	5	25	100

ELLERSTRAP 1 PART WITH RATCHET

MAIN FEATURES:

- Black lashing and black ratchet;
- According EN 12195-2.

OPTIONAL FEATURES:

- Other capacities and lengths available on request;
- Individual printing on lashing strap or other Colours available on request.



ARTICLE CODE	LENGTH (m)	LASHING WIDTH (mm)	TENSILE STRENGTH (LC) STRAPPED (DAN)	PU QUANTITY
ESR25L1-04Z	4	25	500	30
ESR25L1-05Z	5	25	500	30
ESR25L1-06Z	6	25	500	30
ESR50Z1-04Z	4	50	5.000	10
ESR50Z1-09Z	9	50	5.000	10

ELLERSTRAP 2 PARTS WITH RATCHET

MAIN FEATURES:

- With closed double J hook;
- Black lashing and black ratchet;
- According EN 12195-2.

OPTIONAL FEATURES:

- Other capacities and lengths available on request;
- Individual printing on lashing strap and other Colours available on request.



Standard with double J hooks

ARTICLE CODE	LENGTH (m)	LASHING WIDTH (mm)	TENSILE STRENGTH (LC) STRETCHED (DAN)	TENSILE STRENGTH (LC) STRAPPED (DAN)	PU QUANTITY
ESR25L2-03Z	3	25	250	500	30
ESR25L2-05Z	5	25	250	500	30
ESR25L2-08Z	8	25	250	500	30
ESR25Z2-04Z	4	25	750	1.500	30
ESR25Z2-05Z	5	25	750	1.500	20
ESR25Z2-06Z	6	25	750	1.500	20
ESR35Z2-04Z	4	35	1.500	3.000	20
ESR35Z2-05Z	5	35	1.500	3.000	20
ESR35Z2-08Z	8	35	1.500	3.000	20
ESR50Z2-05Z	5	50	2.500	5.000	10
ESR50Z2-08Z	8	50	2.500	5.000	10
ESR50Z2-09Z	9	50	2.500	5.000	10



Black ratchet



ELLER® STEELS

The ELLER® Steels are according to EN 12385-4 and Colour coding is referring to the length (ARGH).

MAIN FEATURES:

- Flexible wire rope slings (construction 6x19+FC and 6x36WS+FC);
- Available in WLL 1t (d=10 mm) en 2t (d=14 mm) with or without PVC tube;
- Ends with thimble and clamped with a tapered talurit;
- Tapered talurit with inspection eye;
- The thimble is painted in a Colour, indicating the length of the steel;
- It version with oversized thimble fits a 3,25t bow-shackle, 2 t fits a 4,75t bow-shackle.

OPTIONAL FEATURES:

- Other capacities, models and lengths are available on request.



ARTICLE CODE WITHOUT PVC TUBE	ARTICLE CODE WITH PVC TUBE	STEEL CABLE Ø (mm)	WLL (t)	EFFECTIVE WORKING LENGTH (m)	COLOUR
CTST1-0.5	CTST1-0.5P	10	1	0,5	Grey
CTST1-0.75	CTST1-0.75P	10	1	0,75	Orange
CTST1-01	CTST1-01P	10	1	1,0	Yellow
CTST1-01.5	CTST1-01.5P	10	1	1,5	Blue
CTST1-02	CTST1-02P	10	1	2,0	Green
CTST1-03	CTST1-03P	10	1	3,0	White
CTST1-04	CTST1-04P	10	1	4,0	Black
CTST1-05	CTST1-05P	10	1	5,0	Red
CTST1-06	CTST1-06P	10	1	6,0	Gold
CTST2-0.5	CTST2-0.5P	14	2	0,5	Grey
CTST2-01	CTST2-01P	14	2	1,0	Yellow
CTST2-01.5	CTST2-01.5P	14	2	1,5	Blue
CTST2-02	CTST2-02P	14	2	2,0	Green
CTST2-03	CTST2-03P	14	2	3,0	White
CTST2-04	CTST2-04P	14	2	4,0	Black
CTST2-05	CTST2-05P	14	2	5,0	Red
CTST2-06	CTST2-06P	14	2	6,0	Gold

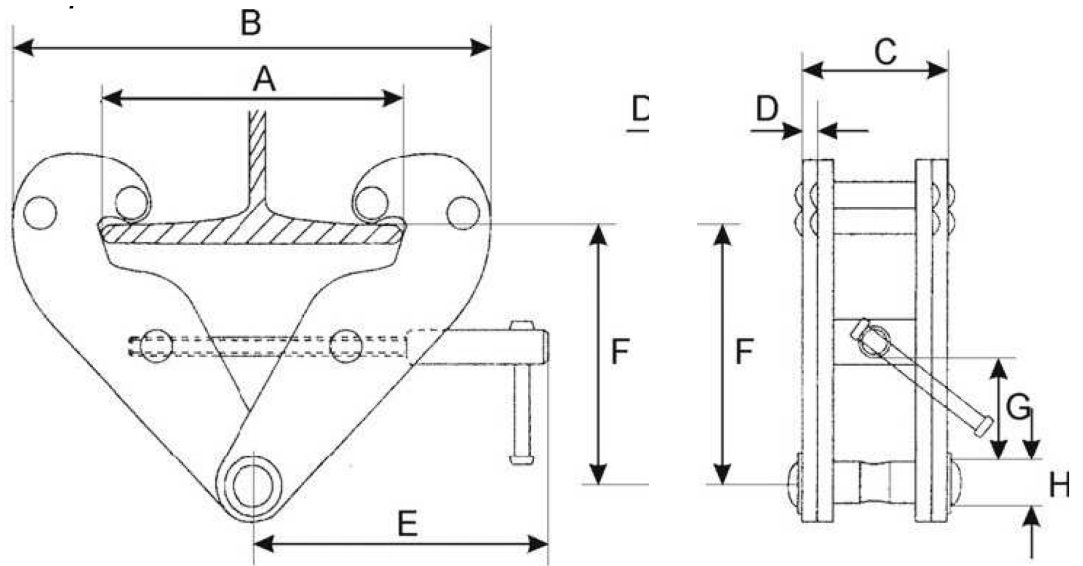
RIGGING PRODUCTS

ELLER® BEAM CLAMP

The ELLER® beam clamp is a simple and safe temporary anchor point. Ideal for quick attachment of loads using threaded spindle. The clamp can be installed within a few simple steps. Just twist and open the spindle, place over the flange and close tightly.

MAIN FEATURES:

- Robust construction, frame is made from solid steel plate and a galvanized spindle;
- Low head room, wide flange width adjustment range, therefore ideal in many situations;
- Black version.



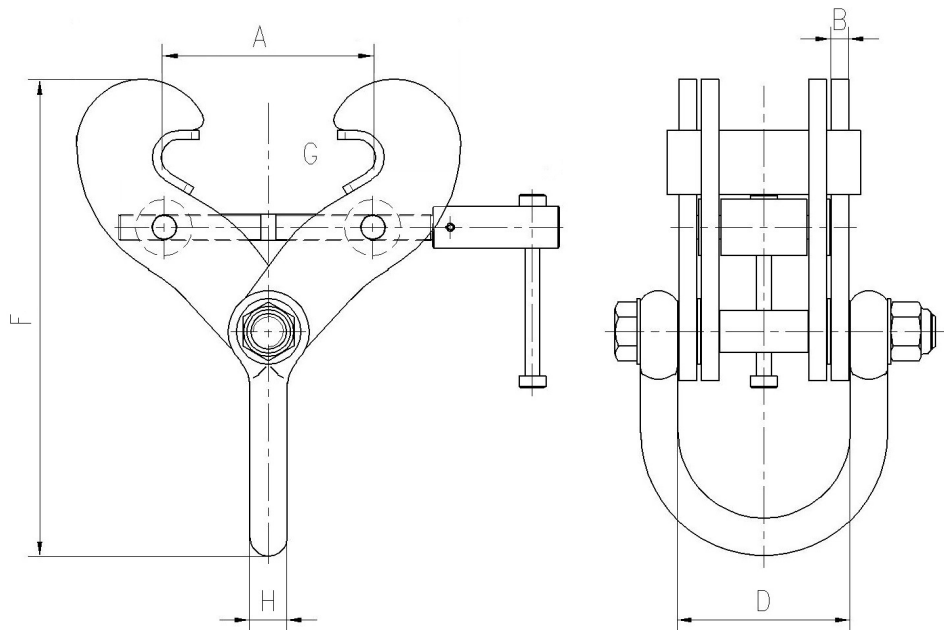
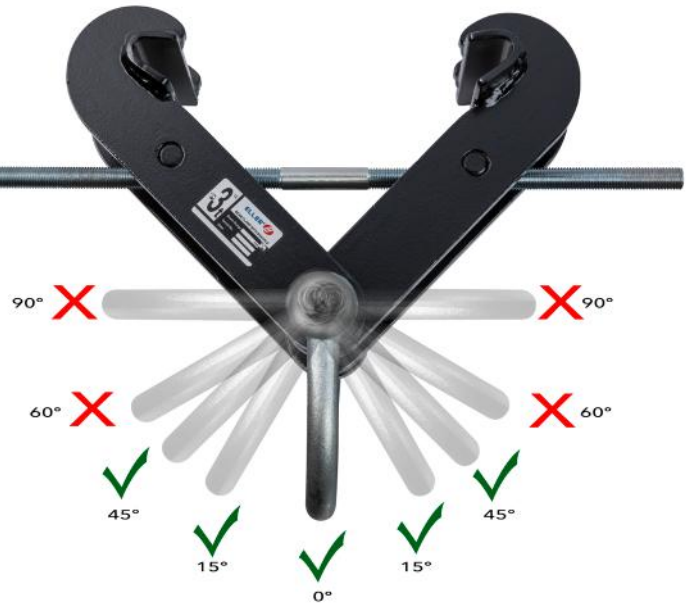
ARTICLE CODE	WLL (t)	BEAM FLANGE WIDTH A (mm)	HEADROOM F (mm)	Ø SUSPENSION BOLT H (mm)	WEIGHT (kg)
ELBC010	1	75 - 230	102 - 154	20	4
ELBC020	2	75 - 230	102 - 154	20	5
ELBC030	3	80 - 345	133 - 223	22	10
ELBC050	5	80 - 345	133 - 223	28	12
ELBC100	10	90 - 350	155 - 234	38	17

ELLER® BEAM CLAMP WITH SHACKLE

The ELLER® Beam Clamp is a simple and safe temporary anchor point. Ideal for quick attachment of loads using threaded spindle. The clamp can be installed within a few simple steps. Just twist and open the spindle, place over the flange and close tightly.

MAIN FEATURES:

- Robust construction, frame is made from solid steel plate and a galvanized spindle;
- Low head room, wide flange width adjustment range, therefore ideal in many situations;
- Loads up to 45°;
- Also available for wide flange beam size (L Versions).



ARTICLE CODE	WLL (t)	BEAM FLANGE WIDTH A (mm)	HEADROOM K MIN - K MAX (mm)	Ø SUSPENSION BOLT H (mm)	REDUCED WLL (t)			WEIGHT (kg)
					0° TILL 15° (17%)	15° TILL 30° (34%)	30° TILL 45° (50%)	
ELBCH020	2	80 - 190	223 - 263	20	-	-	-	4
ELBCH030	3,2	80 - 190	251 - 289	20	2,6	2,1	1,6	8
ELBCH030-L	3,2	127 - 350	294 - 375	20	2,6	2,1	1,6	11,5
ELBCH050-L	5	150 - 305	360 - 413	25	4,1	3,3	2,5	15
ELBCH100	10	203 - 457	421 - 530	32	8,3	6,5	5	28
ELBCH150	15	203 - 457	608 - 684	40	12,4	10	7,5	49,5
ELBCH150-L	15	406 - 610	706 - 816	40	12,4	10	7,5	58,5

RIGGING PRODUCTS

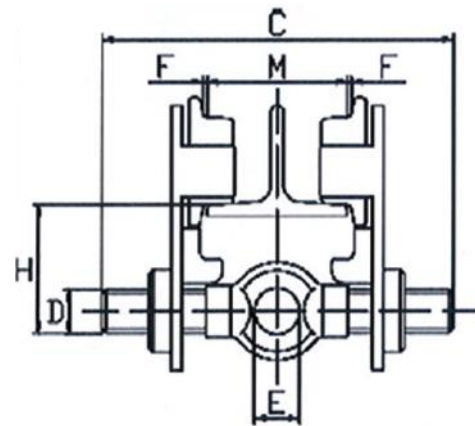
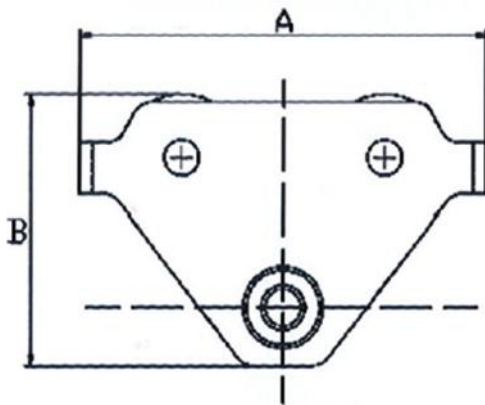
ELLER® SPINDLE PUSH TROLLEY PTS

MAIN FEATURES:

- Quick and precise beam adjustment using the opposite lead threaded load bar;
- High flexible as the trolley is adjustable to fit a wide range of beam widths and profiles, A-smal version, B-widest version;
- Standard anti-tilt and wheel fracture support devices;
- Always central hook attachment point;
- Low headroom;
- Easy installed on the beam.



External locking device.
Also available for PT and GT.



ARTICLE CODE	WLL (t)	A (mm)	B (mm)	C (PTS-A) (mm)	C (PTS-B) (mm)	D (mm)	E (mm)	H (mm)	F (mm)	ADJUSTABLE FOR BEAM FLANGE WIDTH PT (m) (mm)	MIN. RADIUS (m)	WEIGHT (kg)
ELPTS05-A	0,5	260	185	292	377	30	25	77	3	55-220	1,1	8,3
ELPTS05-B	0,5	260	185	292	377	30	25	77	3	160-305	1,1	8,7
ELPTS10-A	1,0	260	188	300	385	35	30	83	3	58-220	1,1	10,9
ELPTS10-B	1,0	260	188	300	385	35	30	83	3	160-305	1,1	11,4
ELPTS20-A	2,0	310	218	310	395	47	40	99	3	66-220	1,3	18,2
ELPTS20-B	2,0	310	218	310	395	47	40	99	3	160-305	1,3	19,0
ELPTS30-A	3,0	390	273	324	409	58	48	114	3	74-220	1,5	31,4

ELLER® TROLLEY PT AND GT

The ELLER® push trolley PT and geared trolley GT.

MAIN FEATURES:

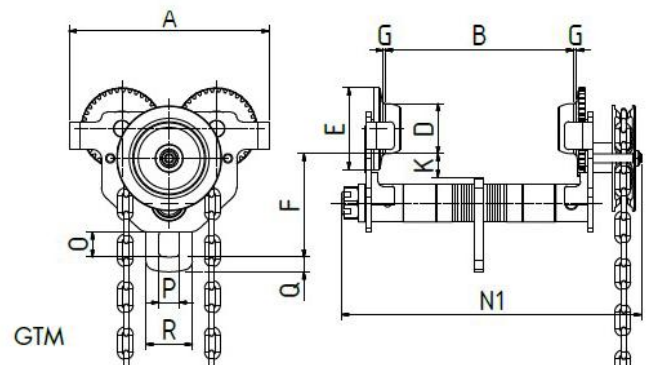
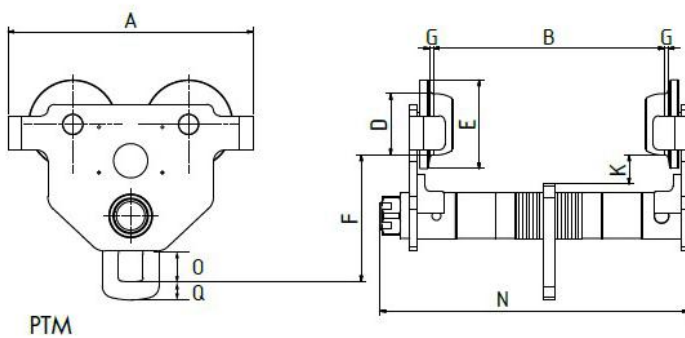
- Adjustable for various beam widths and profiles by changing the spacers;
- Can be installed at any point along the track;
- Suitable for straight or curved track;
- Low headroom;
- Robust construction;
- Pre-lubricated ball bearings for excellent rolling features;
- Standard anti-tilt and wheel fracture support;
- Geared trolley standard with 3m hand chain.

OPTIONAL FEATURES:

- Other lengths of chain available on request;
- External locking device.



ARTICLE CODE	WLL (t)	BEAM FLANGE WIDTH PT (B) (mm)	BEAM FLANGE WIDTH GT (B) (mm)	MIN. RADIUS (m)	WEIGHT PT (kg)	WEIGHT GT (kg)
ELPT005 / ELGT005	0,5	50 - 203	64 - 203	0,8	7	14,5
ELPT010 / ELGT010	1,0	64 - 203	64 - 203	0,9	10,5	14,5
ELPT020 / ELGT020	2,0	88 - 203	88 - 203	1,0	17,5	21,5
ELPT030 / ELGT030	3,0	100 - 203	100 - 203	1,2	27	31
ELPT050 / ELGT050	5,0	114 - 203	114 - 203	1,3	41	46
ELPT100 / ELGT100	10,0	125 - 203	125 - 203	1,7	74	79



ARTICLE CODE	WLL (t)	A (mm)	D (mm)	E (mm)	F (PT) (mm)	F (GT) (mm)	G (mm)	H (mm)
ELPT005 / ELGT005	0,5	200	22	30	281	339	25	111
ELPT010 / ELGT010	1,0	236	30	38	292	351	34	134
ELPT020 / ELGT020	2,0	276	37	55	305	362	28	162,5
ELPT030 / ELGT030	3,0	326	42	66	321	375	32	186
ELPT050 / ELGT050	5,0	380	50	77	327,5	386	38	224
ELPT100 / ELGT100	10,0	426	86	108	341	410	50	198

RIGGING PRODUCTS

BOW SHACKLES SCREW PIN & SAFETY BOLT

MAIN FEATURES:

- Allowed to use for lifting purposes;
- In black;
- All shackles are marked with: WLL
 - Batchcode - CE mark
 - Mark of the manufacturer;
- Safety factor 6;
- US standard;
- Temperature range: -20° C up to + 200° C;

OPTIONAL FEATURES:

- Other capacities and D-shackles available from stock.



ARTICLE CODE	WLL (t)	W (mm)	D X d (mm)	E X P (mm)	S (mm)	L (mm)	O (mm)	WEIGHT (kg)	PU QUANTITY
HBB01000ZEN	1	17	11,2 x 10	25 x 10	36,5	51,5	26	0,15	150
HBB02000ZEN	2	20	16 x 13	30 x 13	48	70	33	0,3	75
HBB03250ZEN	3,25	27	19 x 16	40 x 16	60	88	43	0,65	40
HBB04750ZEN	4,75	32	22 x 19	48 x 19	71	99	51	1	20
HMB01000ZEN	1	17	11,2 x 10	25 x 10	36,5	56,6	26	0,17	150
HMB02000ZEN	2	20	16 x 13	30 x 13	48	75,5	33	0,35	75
HMB03250ZEN	3,25	27	19 x 16	40 x 16	60	92	43	0,67	40
HMB04750ZEN	4,75	32	22 x 19	48 x 19	71	106	51	1,1	20

CM UPGRADED S.T.A.C. CHAIN

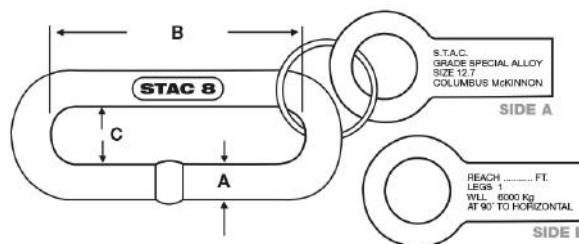
Special Theatrical Alloy Chain (STAC) is ideal for theatrical rigging applications where bridle adjustability is required. In accordance with the LEEA code of practice.

MAIN FEATURES:

- WLL of 5,4 t;
- Safety factor 4:1;
- Heat treated Grade 80 Alloy Steel;
- Fire & Abrasion resistant;
- After production each link tested;
- Easy Identification: embossed with STAC and CM;
- Link accepts up to 3/4" shackle.

OPTIONAL FEATURES:

- Extra tag with size, G80, reach and working load limit.



ARTICLE CODE	WLL (t)	CHAIN SIZE A (mm)	B SIZE (mm)	C SIZE (mm)	LENGTH (m)	WEIGHT (kg)
S-695550D250	5,4	13	95	23,1	76 (drum)	230
S-695550D500	5,4	13	95	23,1	152 (drum)	460

CHAIN SETS INCL. TAGLABEL & SPLINTRING

ARTICLE CODE	WLL (t)	CHAIN SIZE A (mm)	B SIZE (mm)	C SIZE (mm)	LENGTH (m)	WEIGHT (kg)
S-STAC-0.95	5,4	13	95	23,1	0,95 (10 links)	3
S-STAC-1.52	5,4	13	95	23,1	1,52 (16 links)	5,4

ELLERCHAIN GRADE 100 SLING CHAIN, BLACK

Completely in black, both chain and components. The chain mentioned underneath by main features is with connectors. The connectors can also be replaced by omega links.

MAIN FEATURES:

The displayed sling chain contains of:

- 1 Master link;
- 1 Connector;
- 1 Metre chain;
- 1 Clevis sling hook with latch;
- 1 Shortening hook.

Without shortening hook

ARTICLE CODE	WLL (t)	Ø CHAIN (mm)	CHAIN LENGTH (m)
ELCN-1-06-1.0-TKH-Z	1,4	6	1
ELCN-1-06-2.0-TKH-Z	1,4	6	2
ELCN-1-08-1.0-TKH-Z	2,5	8	1
ELCN-1-08-2.0-TKH-Z	2,5	8	2

With shortening hook

ARTICLE CODE	WLL (t)	Ø CHAIN (mm)	CHAIN LENGTH (m)
ELCN-1-06-1.0-TKH-I-Z	1,4	6	1
ELCN-1-06-2.0-TKH-I-Z	1,4	6	2
ELCN-1-08-1.0-TKH-I-Z	2,5	8	1
ELCN-1-08-2.0-TKH-I-Z	2,5	8	2

With intergrated shortening hook

ARTICLE CODE	WLL (t)	Ø CHAIN (mm)	CHAIN LENGTH (m)
KW-1-06-1.0-DGKSHC-Z	1,4	6	1
KW-1-06-2.0-DGKSHC-Z	1,4	6	2
KW-1-08-1.0-DGKSHC-Z	2,5	8	1
KW-1-08-2.0-DGKSHC-Z	2,5	8	2



Hook - Chain - Shortening Clutch - Masterlink

On the following pages you will find the components, which we use for assembling different sling chains. See examples below:



Hook - Chain - Masterlink



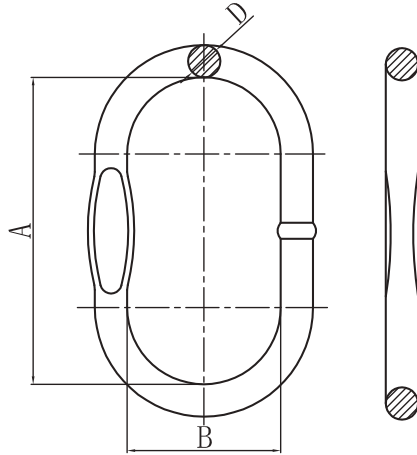
Hook - Chain - Integrated Shortening clutch - Masterlink

RIGGING PRODUCTS

ELLERchain® MASTERLINK

MAIN FEATURES:

- According to EN1677 with higher Work Load;
- Temperature range -29°C - 205°C.

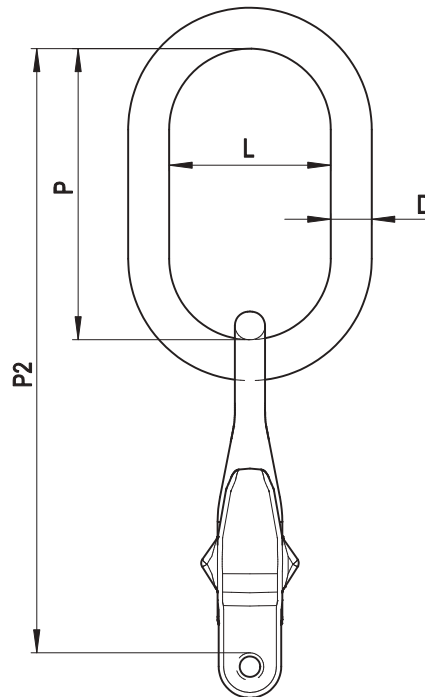


ARTICLE CODE	WORK LOAD	FOR CHAIN ϕ (mm)	A (mm)	B (mm)	D (mm)	OWN WEIGHT (kg)
ELCN-MLF06-Z	2.3	6	110 \pm 6	60 \pm 5	13 \pm 1	0.34
ELCN-MLF08-Z	3.5	8	110 \pm 6	60 \pm 5	16 \pm 1	0.53

KITO MASTERLINK WITH INTEGRATED SHORTENING HOOK

MAIN FEATURES:

- Manufactured according to: EN 1677-4 / ASTM A 952;
- 1,4 - 10 t Working Load Limit (WLL).



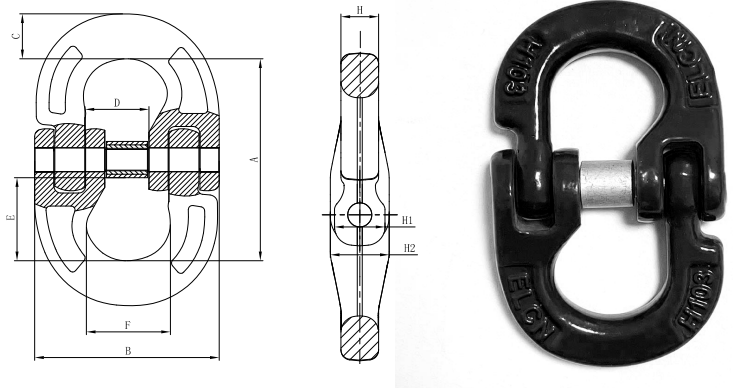
ARTICLE CODE	WORK LOAD	FOR CHAIN ϕ (mm)	D (mm)	P (mm)	P2 (mm)	L (mm)	OWN WEIGHT (kg)
KW-DG1-06-Z	1,4	6	13	110	198	60	0,61
KW-DG1-08-Z	2,5	8	16	110	227	60	1,14

ELLERchain® CONNECTING LINK

The ELLERchain® connecting link.

MAIN FEATURES:

- According to EN1677 with higher Work Load;
- Temperature range -29°C - 205°C.



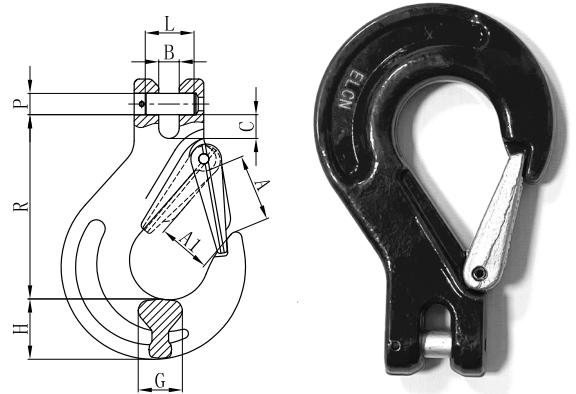
ARTICLE CODE	FOR CHAIN Ø (mm)	WLL (t)	A (mm)	B (mm)	C (mm)	D (mm)	H (mm)	E (mm)	F (mm)	OWN WEIGHT (kg)
ELCN-CNL-06-Z	6	1.4	43.6	40	8.2	14	7.5	16.6	19.2	0.08
ELCN-CNL-08-Z	8	2.5	61.8	56	11.8	19	10	24.8	26	0.24

ELLERchain® CLEVIS HOOK

The ELLERchain® clevis hook.

MAIN FEATURES:

- According to EN1677 with higher Work Load;
- Temperature range -29°C - 205°C.



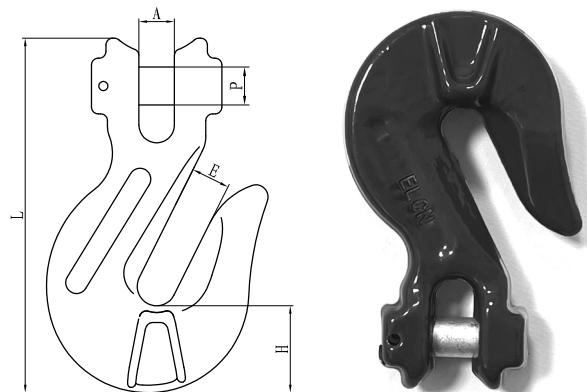
ARTICLE CODE	FOR CHAIN Ø (mm)	WLL (t)	A (mm)	A1 MIN (mm)	B (mm)	C (mm)	D (mm)	G (mm)	H (mm)	PXL (mm)	R (mm)	OWN WEIGHT (kg)
ELCN-CSH-06-Z	6	1.4	26.3	16	7.5	8.2	14	15	7.5	7.8x22	69.6	0.29
ELCN-CSH-08-Z	8	2.5	32.5	21	9.5	11.8	19	19	10	10.3x25.5	93.3	0.59

ELLERchain® SHORTENING HOOK

The ELLERchain® shortening hook.

MAIN FEATURES:

- According to EN1677 with higher Work Load;
- Temperature range -29°C - 205°C.



ARTIKELCODE	TBV KETTING Ø (MM)	WERKLAST (T)	A (MM)	E (MM)	H (MM)	L (MM)	EIGEN GEWICHT (KG)
ELCN-CGH-06	6	1.4	8	8	20	84.7	0.26
ELCN-CGH-08	8	2.5	9.5	10.2	24	95	0.42

FALL PROTECTION



ELLERSAFE

An individual fall protection system is an ultimate method in situations when other safety equipment cannot be used. The function of the system is not to prevent falls but to arrest them and mitigate the results of a sudden stop. In order to provide a proper degree of safety, while configuring an individual fall protection system the following risk factors must be taken into account.

MINIMUM FREE SPACE

A falling person must be stopped mid-air, after the so-called free fall. The results of hitting a surface or an obstacle could be fatal. In order to prevent such a risk, "free space" must be provided below the user. Ensure there are no obstacles a person can hit in his space while falling. While defining the height of free space, one must take into account the parameters of the connecting-safeguarding system and location of the anchor point in relation to the user.

LOCATION OF THE ANCHOR POINT

The length of free fall should always be as short as possible. The height of the anchor point in relation to the system's user location determines the length of free falling. If the anchor point of the connecting safeguarding element is above a worker, the length of free falling is minimal. However, locating the anchor point at foot level results in a longer free fall. This must be taken into account to ensure the person cannot contact the floor or any obstacle. The ideal anchor point will be above the worker.

PENDULUM EFFECT

When deciding on a suitable anchor point you must consider the pendulum effect. A worker could be in a position that when a fall occurs they could come into contact with obstacles or could land on the floor. The working angle should always be taken into account. This angle could cause the improper function of some arrest devices, e.g. a fall arrest block. When carrying out a risk assessment always read the information manual for each item of equipment to ensure the correct use of our products.

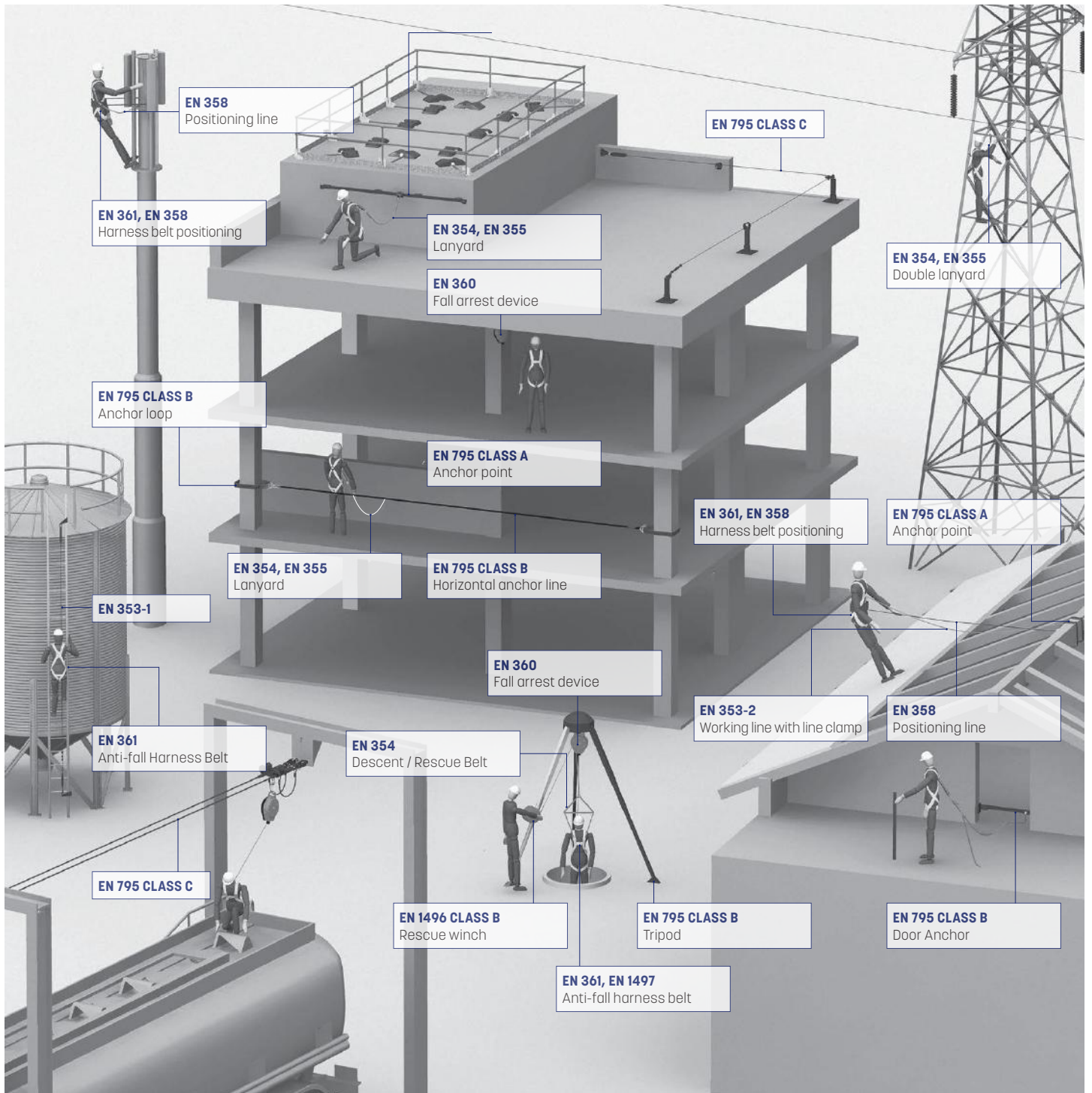
SECURING TOOLS

Safety of tools and equipment at heights involves the organization and securing of these objects, whether in use or not. Hard hats and steel toes help reduce the damage but in the hierarchy of controls one wants to eliminate the hazard all together if it's a possibility. For objects at heights, Ergodyne is your go to source for up-to-date information, training and solutions to keep workers safe and productive on the job.

ASSISTANCE?

Our salesteam is available for any advise in purchase or use of fall protection. Please call + 31 (0) 75 650 47 52 or send an email to info@lr.nl.

FALL PROTECTION

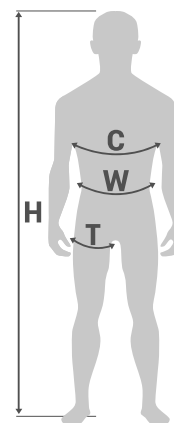


FALL PROTECTION

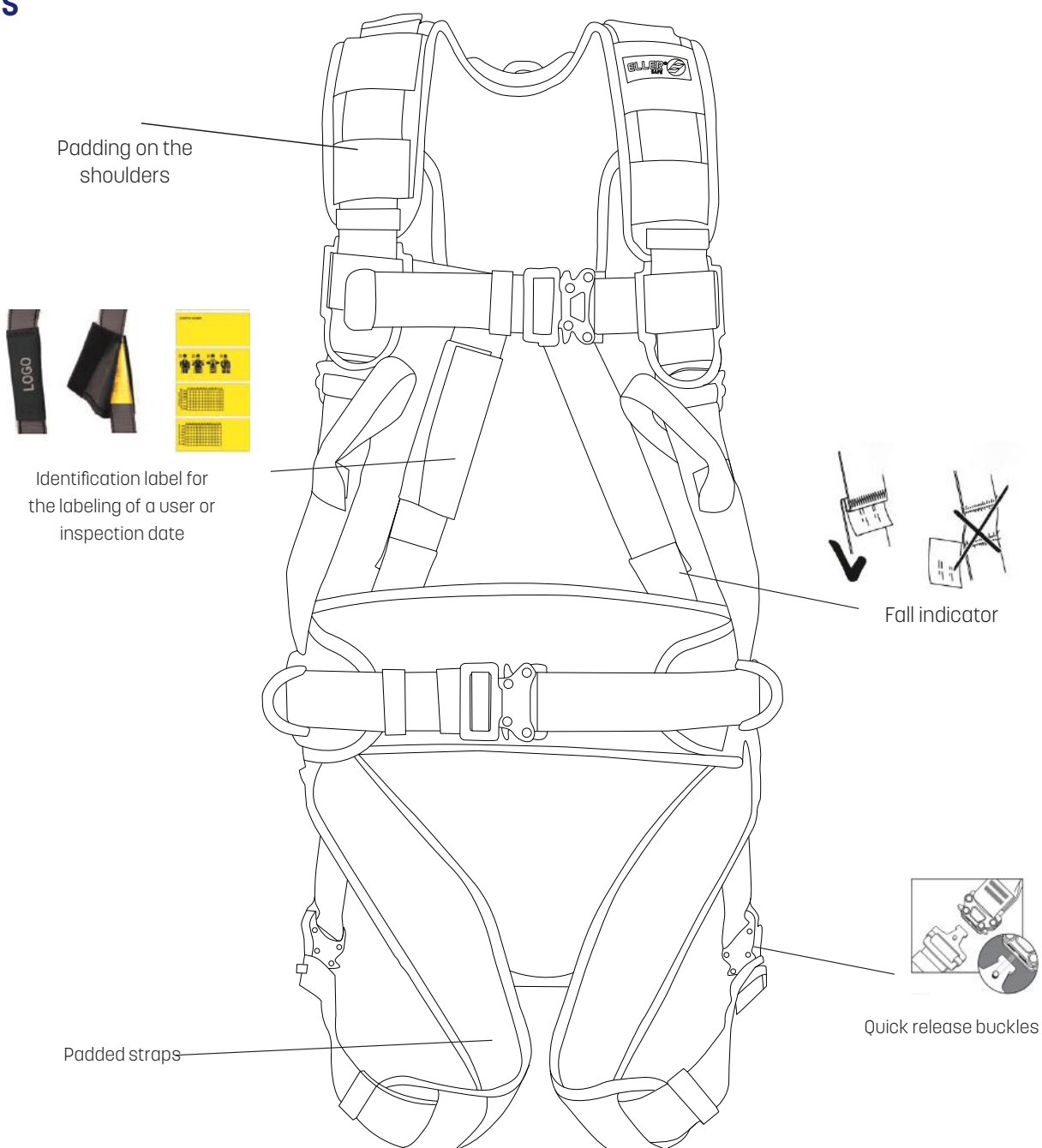
ELLERsafe HARNESS SIZE CHART

ALL ELLERsafe HARNESSES GO UP TO 140KG

SIZE	CHEST SIZE (cm) A	WAIST (cm) B	THIGH SIZE (cm) C	LENGTH (cm) D
S	70 - 90	75 - 110	40 - 70	155 - 175
M-XL	85 - 110	85 - 120	50 - 75	165 - 195
XXL	100 - 130	90 - 140	60 - 85	180 - 205



OPTIONS



ELLERsafe FALL PROTECTION KIT RIGGING, BASIC

MAIN FEATURES:

- Harness P50 (size: M-XL);
- Y-split double lifeline with fall arrestor (length: 2m), equipped with two scaffolding hooks and a snap hook;
- Adjustable positioning line (length: 1.3-2m), equipped with carabiner and scaffold pipe hook;
- Trauma straps AY203;
- Hard plastic storage case.



ARTICLE CODE

FP-SET-RIG-BASIC

ELLERsafe ENTERTAINMENT KIT

MAIN FEATURES:

- P90C harness (size: M-XL);
- Y-elastic lifeline with fall arrestor (length: 2m), equipped with 2 scaffolding hooks and a carabiner;
- Adjustable positioning line AF130-PRO (length: 2m);
- Anchor loop of strap material AZ900;
- Yellow PVC storage bag.



ARTICLE CODE

FP-SET-ENTERTAINMENT

PETZL ENTERTAINMENT KIT

MAIN FEATURES:

- Avao Bod Fast (size: 1) harness;
- Absorbica-Y lanyard with shock absorber;
- Grillon adjustable positioning line;
- 3x OK Triact Lock carabiners;
- Petzl bucket 30L.



ARTICLE CODE

PE-SET-ENTERTAINMENT

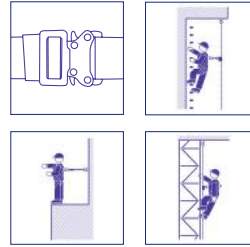
HARNESSES

ELLERsafe HARNESS P-32 PRO

EN 361

MAIN FEATURES:

- Chest loops;
- D-ring on back;
- Adjustable chest, shoulder and leg straps;
- Quick release buckles (QR);
- Padded shoulder and leg straps (NIZE);
- Fall indicator (VI);
- Identification label (IIS);
- Available in size S, M-XL and XXL.

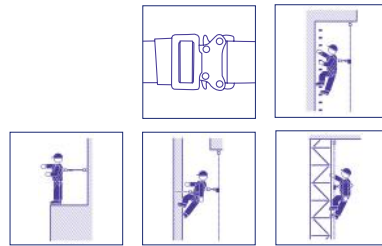


ELLERsafe HARNESS P-52 PRO

EN 361, EN 358

MAIN FEATURES:

- Positioning belt;
- Chest loops;
- D-ring on back;
- Adjustable chest, shoulder and leg straps;
- Quick release buckles (QR);
- Padded shoulder and leg straps (NIZE);
- Fall indicator (VI);
- Identification label (IIS);
- Available in size S, M-XL and XXL.

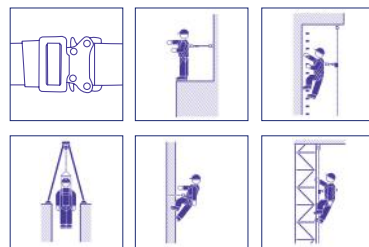


ELLERsafe HARNESS P-500

EN 361

MAIN FEATURES:

- D-ring on back;
- Chest loops;
- Adjustable chest, shoulder and leg straps;
- Padded shoulder and leg straps;
- Quick release buckles;
- Material loops;
- Easy to put on and take off;
- Available in sizes M-XL and XXL;

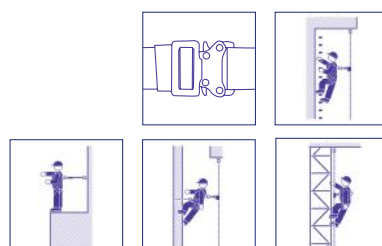


ELLERsafe HARNESS P-600

EN 361, EN 358

MAIN FEATURES:

- D-ring on back;
- Chest loops;
- Positioning points;
- Low tie-in point for vertical movement;
- Adjustable chest, shoulder and leg straps;
- Padded shoulder and leg straps;
- Quick release buckles;
- Material loops;
- Easy to put on and take off;
- Available in sizes M-XL and XXL;

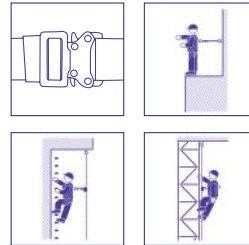


ELLERsafe HARNESS P-06C

EN 361

MAIN FEATURES:

- Flat chest loops;
- Textile D-ring on back;
- Adjustable chest, shoulder and leg straps;
- Quick release buckles;
- Padded shoulder and leg straps;
- Fall indicator;
- Identification label;
- Available in size M-XL and XXL.

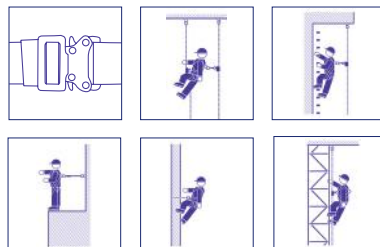


ELLERsafe HARNESS P-90C

EN 361, EN 358, EN 813

MAIN FEATURES:

- Rope Access / Sit- and positioning harness;
- D-ring on back, D-ring chest;
- D-ring ventral;
- D-ring hips, D-ring lower back;
- Adjustable padded shoulder- and leg straps;
- Quick release buckles;
- Equipment loops;
- Available in size M-XL and XXL.



PETZL HARNESS NEWTON EASYFIT

EN 361

MAIN FEATURES:

- Simple, lightweight and hard-wearing design;
- Close-fitting and provides optimal freedom of movement;
- Allows installation of a LIFT-spreader to descend in an upright position;
- Quick to put on and easy to use;
- Attaches and detaches quickly and easily, without loss of adjustment, even with gloves.

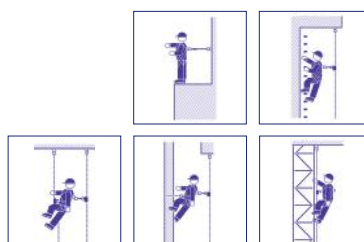


PETZL HARNESS AVAO BOD FAST

EN 361, EN 358, EN 813

MAIN FEATURES:

- Rope access / seat belt and positioning belt;
- D-ring on chest;
- D-ring on back;
- D-ring Ventral;
- Positioning points;
- Quick release buckles;
- Leg loops equipped with breathable foam padding;
- Equipped with material and grommet loops.



ACCESSORIES

PETZL PODIUM SEAT

MAIN FEATURES:

- For harnesses with central D-ring;
- Provides comfort when working at height;
- Adjustable in length;
- Equipped with 2 material loops.



ARTICLE CODE	COLOUR
PE-S07IAA0	Black

ELLERsafe BOSUM SEAT

MAIN FEATURES:

Bosum seat for prolonged working at height.

- Adjustable;
- 3 equipment loops;
- AZ011 carabiner included.



ARTICLE CODE	SEAT SIZE (MM)
FP-BA100	530 x 190

PETZL ASCENSION

EN 567, EN 12841 type B

MAIN FEATURES:

- Right- or left-handed version;
- Suitable for rope diameter: 8 - 13mm;
- Weight: 165g.



ARTICLE CODE	LINE DIAMETER (mm)
PE-B17ALA	8 - 13
PE-B17ARA	8 - 13

ELLERsafe ROPE CLAMP

EN 567, EN 12841-B

MAIN FEATURES:

- Right- or left-handed version;
- Suitable for rope diameter: 8 - 13mm;
- Weight: 205g.



ARTICLE CODE	HAND	LINE DIAMETER (MM)
FP-CD211	Left	8 - 13
FP-CD212	Right	8 - 13

PETZL FOOTAPE

MAIN FEATURES:

- Reinforced and abrasion-resistant footgear;
- Easy to put on;
- Elastic foot loop;
- DoubleBack buckle;
- Material: Nylon, steel, aluminum;
- To be combined with the ASCENSION and BASIC climbing clamps.



ARTICLE CODE	LENGTH (cm)
PE-C47A	88 - 128

PETZL FOOT CORD

MAIN FEATURES:

- Reinforced and abrasion-resistant footgear;
- Easy to put on;
- Elastic foot loop;
- Material: Dyneema, steel and aluminum;
- Can be combined with the ASCENSION and BASIC ascender clamps;
- Lightweight.



ARTICLE CODE	LENGTH (cm)
PE-C47A	88 - 128

PETZL FIXE PULLEY

EN 12278

MAIN FEATURES:

- Compact multipurpose pulley;
- Fixed side plates;
- Can be used with OK and WILLIAM carabiners;



ARTICLE CODE
PE-P05W

PETZL PULLEY ROPE CLAMP MICRO TRAXION

EN 567

MAIN FEATURES:

- Compact, lightweight;
- Self-cleaning;
- Ball bearings.



ARTICLE CODE
PE-P53

PETZL PAW ANCHORPLATE

MAIN FEATURES:

- For easy workstation organization and setting up multi-anchor systems;
- 19mm holes allow the shackles of most carabiners to pass through;
- Hole design allows ropes or slings to be threaded for direct connection;
- The main attachment eye accommodates up to three carabiners.

ARTICLE CODE	SIZE	COLOUR
PE-G063AA00	S	Black
PE-G063BA00	M	Black
PE-G063CA00	L	Black

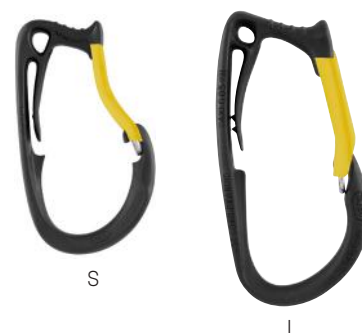


PETZL CARITOOL

MAIN FEATURES:

- Lightweight material carrier;
- For attachment to harnesses from Petzl and other brands;
- Spring clip.

ARTICLE CODE	SIZE	COLOUR
PE-P042AA00	S	Black / Yellow
PE-P042AA01	L	Black / Yellow



PETZL CORDEX GLOVES

CE EN420, CE EN388 (2133), EAC

MAIN FEATURES:

- High quality natural leather;
- Durable double layer of leather in wear areas (fingertips, palm, between thumb and index finger);
- Back made of breathable stretch nylon or leather (plus);
- Available in sizes XS-XL, in Beige or Black.

ARTICLE CODE	SIZE	COLOUR	VARIANT
PE-K52	XS-XL	Black of Beige	Standaard
PE-K53	XS-XL	Black of Beige	Plus



PETZL SPATHA KNIFE

EN 567, EN 12841-B

MAIN FEATURES:

- For easy cutting of ropes
- Light nylon handle;
- Extremely durable;
- Attaches to harness with CARITOOL material carrier or a carabiner;
- Material: stainless steel, nylon.



ARTICLE CODE
PE-S92AN

PETZL SWIVEL

MAIN FEATURES:

- Prevents torsion and entanglement of ropes and lifelines;
- For a wide range of products (pulleys, ropes).



ARTICLE CODE	TYPE
PE-P58S0	Open
PE-P58S	S
PE-P58L	L

ACCESSORIES

PETZL MOBILE ANTI-FALL PROTECTION ASAP

EN 353-2, EN 12841 type A

MAIN FEATURES:

- Blocks in the event of a fall, slip and uncontrolled descent;
- For use on vertical or angled rope;
- Can be placed at any point on the rope be confirmed and removed;
- Can be combined with the fall damper ASAP'SORBER;
- Material: stainless steel and aluminum.



ARTICLE CODE	LINE DIAMETER (mm)
PE-B070AA00	10 - 13

PETZL ANTI-FALL PROTECTION ASAP LOCK

EN 353-2, EN 12841 type A

MAIN FEATURES:

- Blocks in the event of a fall, slip and uncontrolled descent;
- For use on vertical or angled rope;
- Can be placed at any point on the rope be confirmed and removed;
- Integrated locking function;
- Can be combined with the fall damper ASAP'SORBER;
- Material: stainless steel, aluminum and nylon.



ARTICLE CODE	LINE DIAMETER (mm)
PE-B071BA00	10 - 13

PETZL DESCENT DEVICE 1'D S

EN 341, EN 12841 type C

MAIN FEATURES:

- Anti-panic function;
- Blocking pawl;
- Max. working load: 250kg;
- Integration in rescue kit;
- Also in large IDL diameter;
- Also in black.



ARTICLE CODE	LINE DIAMETER (mm)
PE-D200S0	10 - 11,5

PETZL DESCENT RIG

EN 341, EN 12841 type C

MAIN FEATURES:

- Easy mounting;
- Max. working load: 200kg;
- Also in black.



ARTICLE CODE	LINE DIAMETER (mm)
PE-D021AA00	10 - 11,5

PETZL FALL ABSORBER ASAP'SORBER

EN 355

MAIN FEATURES:

- Absorbs energy;
- Equipped with a wear resistant protective cover;
- The ends are fitted with rubber STRINGS;
- Material: Nylon, Polyester.



ARTICLE CODE	LENGTH (cm)
PE-L071AA00	20
PE-L071AA01	40

ELLERsafe BOSUN SEAT

MAIN FEATURES:

- Bosun chair for sitting on large to perform work at height;
- The user must additionally fall protection system.



ARTICLE CODE	SEATING SIZE (mm)
FP-BA300	450 x 370

ELLERsafe TRAUMA STRAP

MAIN FEATURES:

- Adjustable foot loop Trauma straps;
- Prevents suspension trauma after falling;
- To be used when the user falls to relieve pressure on the legs;
- Use two foot loops for optimal support.



ELLERsafe TRAUMA STRAPS

MAIN FEATURES:

- Adjustable foot loop Trauma straps;
- Prevents suspension trauma after falling;
- To be used when the user falls to relieve pressure on the legs;
- Use two foot loops for optimal support.



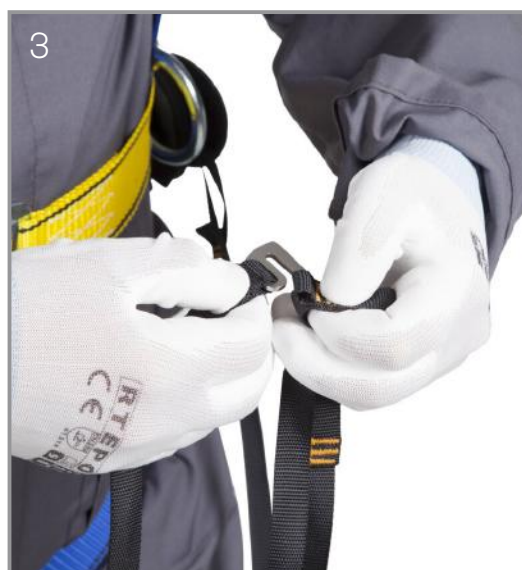
ARTICLE CODE	LENGTH (cm)
FP-AY201	120

ARTICLE CODE	LENGTH (cm)
FP-AY205	105

DID YOU KNOW?

Hanging in a harness for a long time without support can have lifelong harmful effects on your health by constricting the blood vessels. Prevent orthostatic shock by using one or 2 trauma straps, as shown on these images.

You can ask one of our employees all your questions about Traumastraps.



HELMETS

PETZL VERTEX

EN 397, EN 12492, EN 50365, ANSI Z89.1 Type I Class E, EAC, AS / NZS 1801

MAIN FEATURES:

- The VERTEX helmet is very comfortable, thanks to the six-point textile suspension and the CENTER FIT and FLIP & FIT systems;
- The adjustable chinstrap makes it ideal for both work at height and on the ground;
- The unvented outer shell protects against electrical hazards, molten metal splashes and flames.

ARTICLE CODE	COLOUR	ARTICLE CODE	COLOUR	ARTICLE CODE	COLOUR
A010AA00	White	A010AA03	Black	A010AA06	Green
A010AA01	Yellow	A010AA04	Orange	A010DA00	HI-VIZ Yellow
A010AA02	Red	A010AA05	Blue	A010DA01	HI-VIZ Orange



PETZL VERTEX VENT

EN 397, EN 12492, ANSI Z89.1 Type I Class C, EAC

MAIN FEATURES:

- Fitted with ventilation holes with sliding hatches to allow air to flow through the helmet.
- 53-63 cm

ARTICLE CODE	COLOUR	ARTICLE CODE	COLOUR	ARTICLE CODE	COLOUR
A010CA00	White	A010CA03	Black	A010CA06	Green
A010CA01	Yellow	A010CA04	Orange	A010EA00	HI-VIZ Yellow
A010CA02	Red	A010CA05	Blue	A010EA01	HI-VIZ Orange



ELLERsafe ATRA SAFETY HELMET VENTILATED

EN 397

MAIN FEATURES:

- Adjustable chin and head strap;
- Sweatband;
- Colour: Black, White or Yellow,
- 53-63 cm.

ARTICLE CODE	COLOUR
ATRA10V-W	White
ATRA10V-Z	Black
ATRA10V-Y	Yellow



PETZ VERTEX ACCESSORIES

PETZ VERTEX VIZIR

These visors are specially designed for the industrial Petzl helmets and are easy and quick to assemble thanks to the inserts that are already installed on the helmets.

ARTICLE CODE	STIJL
PE-A015AA00	Transparant
PE-A015BA00	Shadow



PETZL NAMETAG HOLDER

ARTICLE CODE
PE-A018AA00



PETZL PIXA 1

MAIN FEATURES:

- 60 lumens;
- Headlamp for use in ATEX explosive atmospheres;
- The PIXA 1 is a robust headlamp that provides illumination that allows the user can work comfortably on tasks that are close by;
- CONSTANT LIGHTING technology: the brightness does not gradually decrease as the batteries run out;
- Complies with ATEX zone 2 / 22 (II 3 GD Ex nA ic IIB T4 Gc to IIIC T135 ° C Dc) certification for work in explosive atmospheres.



ARTICLE CODE
PE-E78AHB2

PETZL PIXA 2

MAIN FEATURES:

- 80 lumens;
- Headlamp for use in ATEX explosive atmospheres;
- The PIXA 2 is a robust headlamp that provides lighting that allows the user can work comfortably on tasks that are close by or to move around safely;
- CONSTANT LIGHTING technology: the brightness does not gradually decrease as the batteries run out;
- Complies with ATEX zone 2 / 22 (II 3 GD Ex nA ic IIB T4 Gc to IIIC T135 ° C Dc) certification for work in explosive atmospheres.



ARTICLE CODE
PE-E78BHB2

PETZL PIXA 3 + 3R

MAIN FEATURES:

- 100 lumens;
- Robust and versatile headlamp for use in ATEX explosive environments;
- The multi-beam adapts to all situations: working at close range, movement and vision at a great distance;
- CONSTANT LIGHTING technology: the brightness does not gradually decrease as the batteries run down;
- The 3R comes with charger.



ARTICLE CODE	TYPE
PE-E78CHB2	3
PE-E78CHR2	3R

PETZL SWIFT RL

MAIN FEATURES:

- 900 lumens;
- With its REACTIVE LIGHTING® technology, a sensor analyzes the ambient light and adjusts the brightness automatically;
- With red lighting for Stealth;
- SWIFT® RL PRO is intuitive, easy control of all lamp functions;
- The five-level gauge allows precise monitoring of the battery's charge level battery possible;
- Rechargeable via USB.



ARTICLE CODE
PE-E810AA00

LANYARDS

ELLERsafe ELASTIC LANYARD WITH DAMPER ABM / LE 111

EN 355, EN 354, EN 362

MAIN FEATURES:

- Elastic lanyard with shock absorber;
- Equipped with scaffolding pipe hook at the end of the lanyard;
- Equipped with a carabiner at the end of the fall damper;
- Suitable for persons up to 137kg.

ARTICLE CODE	LENGTH (m)	HOOK-DAMPER SIDE	HOOK- END
FP-LE111-AW0110222	2	carabiner	Scaffolding pipe hook



ELLERsafe Y-SPLIT ADJUSTABLE LINE ABM / LE 111

EN 355, EN 354, EN 362

MAIN FEATURES:

- Elastic lanyard with shock absorber;
- Equipped with scaffolding pipe hooks at the end of the lanyard;
- Equipped with a carabiner at the end of the fall damper;
- Suitable for persons up to 137kg.

ARTICLE CODE	LENGTH (m)	HOOK-DAMPER SIDE	HOOK- END
FP-2LE111-AW0110222	2	carabiner	2x Scaffolding pipe hook



ELLERsafe DROP SUPPORT / ELASTIC TRAIN ABM / LE 101

EN 354, EN 355, EN 362

MAIN FEATURES:

- Elastic lanyard with shock absorber;
- Equipped with scaffolding pipe hook at the end of the lanyard;
- Equipped with snaphook or carabiner at the end of the fall damper.

ARTICLE CODE	LENGTH (m)	HOOK-DAMPER SIDE	HOOK- END
FP-LE101-BW0020222	2	snaphook	Scaffolding pipe hook
FP-LE101-BW0110222	2	carabiner	Scaffolding pipe hook



ELLERsafe DOUBLE ELASTIC RISK LINE ABM / 2LE101

EN 354, EN 355, EN 362

MAIN FEATURES:

- Elastic double lanyard with shock absorber;
- Equipped with scaffolding pipe hooks at the end of the lanyard;
- Equipped with snaphook or carabiner at the end of the shock absorber.

ARTICLE CODE	LENGTH (m)	HOOK-DAMPER SIDE	HOOK- END
FP-2LE101-BW0020222	2	snaphook	2x Scaffolding pipe hook
FP-2LE101-BW0110222	2	carabiner	2x Scaffolding pipe hook



PETZL ABSORBICA LINE WITH DAMPER

EN 355

MAIN FEATURES:

- Integrated compact shock absorber;
- Can be combined with various carabiners:
 - MGO-open
 - EAShook-open

ARTICLE CODE	TYPE	LENGTH (m)
L011AA00	-	0,8
L011AA01	Elastic	1,5



PETZL ABSORBICA Y SPLIT LINE WITH DAMPER

EN 355

MAIN FEATURES:

- Integrated compact shock absorber;
- Can be combined with various carabiners:
 - MGO-open
 - EAShook-open

ARTICLE CODE	TYPE	LENGTH (m)
L012AA00	-	0,8
L014AA01	Elastic	1,5



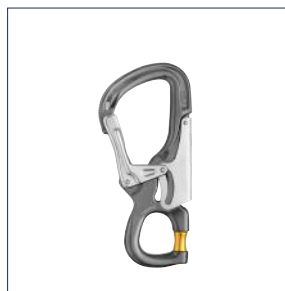
PETZL ABSORBICA Y-SPLIT LINE WITH DAMPER AND MGO

EN 355, EN 362

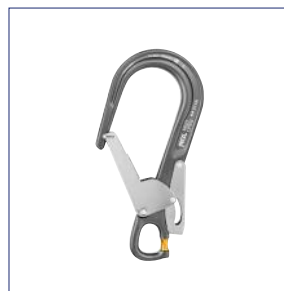
MAIN FEATURES:

- Integrated compact shock absorber;
- With 2 riser scaffolding pipe hooks.

ARTICLE CODE	TYPE	LENGTH (m)
PE-L014CA01	-	1,5
PE-L012CA00	Elastisch	0,8



EASHOOK
PE-M043AA00



MGO 60
PE-MG0060



MGO 110
PE-MG80AA00

POSITIONING LINES

ELLERsafe POSITIONING LANYARD AF130

EN 358

MAIN FEATURES:

- Adjustable positioning lanyard;
- Core mantle line diameter: 14mm;
- Aluminum length adjuster;
- Provided with a snap hook at the end.

ARTICLE CODE	ADJUST-SIDE	HOOK-SIDE	LENGTH (m)
FP-AF130-xx	carabiner	snaphook	2, 3, 5, 10 or 20



ELLERsafe POSITIONING LANYARD AF130 PRO

EN 358

SPECIFICATIES:

- Adjustable positioning lanyard;
- Core mantle line diameter: 14mm;
- Aluminum length adjuster;
- Provided with a scaffold hook at the end.

ARTICLE CODE	ADJUST-SIDE	HOOK-SIDE	LENGTH (m)
FP-AF130-02-022	Carabiner	Scaffold hook	2



PETZL POSITIONING LINE GRILLON

EN 358, EN 12841 type C

MAIN FEATURES:

- For accurate positioning;
- Highly effective control system;
- Material: Nylon, polyester, aluminum;
- Also available in black;
- Also available in lengths 3, 4, 5, 10 and 15m.

ARTICLE CODE	LENGTH (m)
PE-L052AAXX	2, 3, 4, 5, 10 or 15



PETZL POSITIONING LINE ADJUST-I

EN 358

MAIN FEATURES:

Adjustable single lanyard that enables continuous connection for all types of progression:

- Very quick and precise length adjustment of the adjustable arm, thanks to the ergonomic shape of the ADJUST rope adjuster
- Easy clipping with the TANGA accessory and plastic sheath that help the connectors in the proper position
- Compatible with the gated ventral attachment point on ASTRO harnesses
- Dynamic rope lanyard to limit the impact force transmitted to the user in the event of a short fall

ARTICLE CODE	LENGTH (m)
PE-L044BA00	1



PETZL PARALLEL

EN 1891 type A

MAIN FEATURES:

- Semi-static kernmantle line 10.5 mm;
- Small diameter provides very good performance for flexibility and weight;
- Low elongation under load, which increases efficiency at the start of a rope climb;
- Optional sewn end for a stronger connection with protective sleeve to keep the connector onto keep in place;
- Standard lengths: 50, 100, 200 and 500 m.

ARTICLE CODE	LENGTH (m)
PE-R077AAXX	50, 100, 200 or 500 m



PETZL AXIS

EN 1891 type A

MAIN FEATURES:

- Petzl semi-static kernmantel line Axis 11 mm;
- Small diameter provides very good performance for flexibility and weight;
- Low elongation under load, which increases efficiency at the start of a rope climb;
- Optional sewn end for a stronger connection with protective sleeve to keep the connector on place;
- Standard lengths: 50, 100, 200 and 500 m.

ARTICLE CODE	LENGTH (m)
PE-R074AAXX	50, 100, 200 or 500 m



PETZL VECTOR

EN 1891 type A

MAIN FEATURES:

- Petzl semi-static kernmantle line Vector 12.5 mm;
- Large diameter, for great strength and excellent handling when handling heavy loads;
- Optional sewn end for a stronger connection with protective sleeve to keep the connector in place;
- Standard lengths: 50, 100, 200 and 500 m.

ARTICLE CODE	LENGTH (m)
PE-R078AAXX	50, 100, 200 of 500 m



PETZL LOW STRETCH ROPE AXIS WITH EYE

EN 1891 type A, EAC

MAIN FEATURES:

- Static rope, elongation: 3%;
- Better grip for easy handling;
- Material: Polyester, nylon;
- Breaking strength: 22kN with sewn rope end.

ARTICLE CODE	DIAMETER (mm)	LENGTH (m)
PE-R074BA00	11	10
PE-R074BA01	11	20
PE-R074BA02	11	30
PE-R074BA03	11	40
PE-R074BA04	11	50
PE-R074BA05	11	60



FALL ARRESTERS

ELLERsafe FALL ARREST DEVICE WR 100

EN 360

MAIN FEATURES:

- Fall arrest device with belt material line;
- Fully serviceable;
- Swivel hook with fall indicator;
- Lightweight;
- Including steel carabiner;
- Radilon plastic housing;
- **Suitable for persons up to 120kg**

ARTICLE CODE	LENGTH (m)	WEIGHT (kg)
FP-WR100-06	6	1,5



ELLERsafe FALL ARREST DEVICE 220S

EN 360

MAIN FEATURES:

- Fall arrest device with belt material line;
- Rotatable scaffold pipe hook at the top;
- Swivel hook at the bottom;
- Lightweight;
- Radilon plastic housing;
- **Suitable for persons up to 140kg.**

ARTICLE CODE	LENGTH (m)	WEIGHT (kg)
FP-AH220S	2,25	1,68



ELLERsafe CR 030 FALL ARREST DEVICE

EN 360

MAIN FEATURES:

- Fall arrest device CR 030 of 4mm galvanized steel cable;
- Fully serviceable;
- Lightweight;
- European manufacturer;
- Radilon plastic housing;
- Including steel carabiner;
- **Suitable for persons up to 140 kg.**
- Geschikt voor personen up to 140 kg.

ARTICLE CODE	LENGTH (m)	WEIGHT (kg)
FP-CR030-03	3	1,75



ELLERsafe DOUBLE FALL ARREST DEVICE DWR040S

EN 360

MAIN FEATURES:

- Lightweight fall arrest device with two straps;
- Designed for work where the attachment point needs to be moved often;
- No additional safety shock absorber needed;
- 2x Riser Pipe Hook - 1x Carabiner;
- Belt material;
- Built-in shock absorber;
- Housing: plastic;
- Material: stainless steel;
- Max. 140 kg.

ARTICLE CODE	LENGTH (m)	WEIGHT (kg)
FP-DWR040S-020	2	2



TEMPORARY ANCHOR POINTS

ELLERsafe TROLLEY ST 010

EN 795 class B

MAIN FEATURES:

- Portable mobile anchor point;
- Can be used on horizontal I-beams;
- Weight: 5.2kg;
- Material: steel;
- Suitable for 1 person.



ARTICLE CODE	PROFILE WIDTH (mm)
FP-ST010	65 - 120

ELLERsafe ANCHOR POINT I-BEAM ST 020

EN 795 class B

MAIN FEATURES:

- Portable mobile anchor point;
- Can be used on horizontal I-beams;
- Weight: 4kg;
- Material: steel;
- Suitable for 1 person.



ARTICLE CODE	PROFILE WIDTH (mm)
FP-ST020	75 - 210

ELLERsafe ANCHOR POINT I-BEAM AT 25

EN 795 class B

MAIN FEATURES:

- Portable mobile anchor point;
- Can be used as a temporary anchor point on steel I-beams;
- Weight: 1.37kg;
- Material: aluminum;
- Suitable for 2 persons.



ARTICLE CODE	PROFILE WIDTH (mm)	WEIGHT (kg)
FP-AT250	95 - 400	1,37

ELLERsafe ALUMINIUM TROLLEY

EN 795 class B

MAIN FEATURES:

- On steel I-beams;
- Beam width 63,5-300mm;
- For 1 person, max. 140kg;
- 2 sliding jaws;
- Horizontal use.



ARTICLE CODE	BEAM FLANGE DIMENSIONS (cm)	WEIGHT (kg)
FP-BA01201	6,35 - 30	2,5
FP-BA01202	6,35 - 30	2,8
FP-BA01203	6,35 - 30	3,1

TEMPORARY ANCHOR POINTS

ELLERsafe ANCHOR LOOP AZ 700

EN 795 class B

MAIN FEATURES:

- Anchoring loop of strap material with anti-slip;
- Bandwidth: 45mm, 30kN;
- With steel D-ring at the ends;
- Including carabiner AZ 011, 25kN.

ARTICLE CODE	LENGTH (m)	ARTICLE CODE	LENGTH (m)
FP-AZ700-090	0,9	FP-AZ700-140	14
FP-AZ700-120	12	FP-AZ700-200	20



PETZL ANCHOR STRAP CONNEXION FIXE

EN 795 class B

MAIN FEATURES:

- Anchor loop;
- Forged steel D-rings on ends;
- Available in three lengths: 100, 150 and 200cm.

ARTICLE CODE	LENGTH (m)	COLOUR
PE-G010AA00	1	Black
PE-G010AA01	1,5	Blue
PE-G010AA02	2	Yellow



ELLERsafe ANCHORING LOOP AZ 410

EN 795 class B, EN 354

MAIN FEATURES:

- Anchoring loop;
- Steel cable with transparent protection;
- Including carabiner AZ011;
- In combination with fall absorber also as a safety catchline to use;
- Suitable for 1 person or 15kN.

ARTICLE CODE	LENGTH (m)	ARTICLE CODE	LENGTH (m)
FP-AZ410-0100	1	FP-AZ410-0500	5
FP-AZ410-0200	2	FP-AZ410-1000	10



PETZL WIRE STROP

EN795 class B, EN354, TS 16415 (TWO PERSON), NFPA 1983, ANSI Z359.18

MAIN FEATURES:

- Steel noose with a small eye and a large eye;
- The plastic protection keeps the carabiner in place;
- Cable diameter: 6.5mm;
- Available in 5 lengths: 50, 100, 150, 200 and 300cm.

ARTICLE CODE	LENGTH (cm)
PE-G200AA00	50
PE-G200AA01	100
PE-G200AA02	150
PE-G200AA03	200
PE-G200AA04	300



TEMPORARY ANCHOR POINTS

ELLERsafe ANCHOR LOOP AZ 900

EN 795 class B, EN 354

MAIN FEATURES:

- Tire material anchorage loop;
- Static load: 22kN.

ARTICLE CODE	WORKING LENGTH (cm)	Colour
FP-AZ900-030	30	Red
FP-AZ900-060	60	Red
FP-AZ900-080	80	Red
FP-AZ900-100(-Z)	100	Red or Black
FP-AZ900-120(-Z)	120	Red or Black



PETZL ANCHOR LOOP ANNEAU BLACK

EN 566, EN 795 class B

MAIN FEATURES:

- Polyester anchor loop;
- Breaking strength: 22kN.

ARTICLE CODE	LENGTH (cm)
PE-C40060N	60
PE-C40080N	80
PE-C40120N	120



TEXORA TX/L COMPACT SLING

EN 354, EN 795

MAIN FEATURES:

- Breaking strength: 100 kN!
- Polyester anchor loop;
- Unique sling due to it's high breaking strength, and ability to stiffen it up so you can maneuver it easily.

ARTICLE CODE	LENGHT MAX. (cm)
TX-L-COMP-CP-050	50
TX-L-COMP-CP-080	80
TX-L-COMP-CP-100	100
TX-L-COMP-CP-120	120
TX-L-COMP-CP-150	150
TX-L-COMP-CP-180	180
TX-L-COMP-CP-200	200



LIFTING BUCKETS

ELLERsafe POLYESTER BUCKET

MAIN FEATURES:

- Two internal pockets for sorting;
- One large compartment, 25 liter;
- Two external pockets for quick access;
- Sturdy plastic bottom, does not wear out easily;
- Reinforced top edge, always easy access;
- Carrying handle, for lifting or carrying;
- A diameter of 30cm and a height of 40cm;
- For carrying tools or goods for working at height, or for lifting.

ARTIKELCODE	SIZE (CM)	VOLUME (LTR)	WEIGHT (KG)
FP-TA502-30-Z	40 X 30	25	1



ELLERsafe POLYESTER BUCKET

MAIN FEATURES:

- Carabiner AZ011 included;
- Sturdy plastic bottom, does not wear out easily;
- Reinforced top edge and bottom.

ARTICLE CODE	SIZE (CM)	VOLUME (LTR)	WEIGHT (KG)
FP- TA501-30-Z	21 X 39	10	0,46



ERGODYNE POLYESTER TOOL BUCKET

MAIN FEATURES:

- 840D nylon main material;
- Molded plastic top ring around opening for viewing and access to the content;
- Strong handle with leather reinforcement;
- Nickel plated swivel clip hook;
- Heavy nylon stitching;
- Inside pocket;
- Patented nickel-plated drain;
- Maximum safe working capacity: 45 kg;
- Certified by third parties with a safety factor of 5:1;
- Diameter 32 cm, height 38 cm.



ARTICLE CODE	ROTATING HOOK
ER5970-14970-EU	Yes
ER5975-14975-EU	No

ERGODYNE CANVAS TOOL BUCKET

MAIN FEATURES:

- Synthetic leather reinforced base;
- Molded plastic top ring around wide retain opening for view and access to the content;
- Strong handle with leather reinforcement;
- Heavy nylon stitching;
- Inside pocket;
- Patented nickel-plated drain;
- Maximum safe working capacity: 68 kg;
- Certified by third parties with a safety factor of 5:1;
- Diameter 32 cm, height 43 cm.



ARTICLE CODE	ROTATING HOOK
ER5930-14930-EU	No
ER5960-14960-EU	Yes

ERGODYNE POLYESTER COVER

MAIN FEATURES:

- Polyester cover for above tool buckets;
- Size: 12.5"D; 32cm.

ARTICLE CODE
ER5938-14938-EU



PETZL INTERFAST

MAIN FEATURES:

- Attachment point for the TOOLBAG and TOOLEASH
- Compatible with any slotted harness
- Compact and durable to reduce harness size



PETZL TOOLEASH

MAIN FEATURES:

- Elastic tool catch line for tools up to 5 kg
- The very strong elastic line is compact on your harness
- For temporary or permanent use
- Including carabiner with twistlock



PETZL TOOLINK S & TOOLTAPE

MAIN FEATURES:

- Attachment for tools up to 2.3 kg
- Pack of 5 loops including TOOLTAPE bonding tape tools without connection hole
- Ergonomic connection point allows you to attach and detach it quickly



PETZL TOOLINK M

MAIN FEATURES:

- Attachment for tools up to 3 kg with connection hole
- Set of 5 units
- Ergonomic connection point allows you to attach and detach tools quickly



PETZL TOOLINK L

MAIN FEATURES:

- Attachment for tools up to 5 kg
- Set of 5 units
- Ergonomic connection point allows you to attach and detach it quickly



TOOL LINES

ERGODYNE TOOL LINE, SCREW CARAB HOOK

MAIN FEATURES:

- Anodized aluminum alloy carabiner with fixed eye;
- High strength 3-layer nylon stitching provides connecting ends;
- Shock absorbing properties reduce the dynamic force on the body or a different anchor point if a fall occurs.

ARTICLE CODE	WORK LOAD (kg)	LENGHT(cm)	TYPE
ER3100FX-19802	4,5	96-122	Single
ER3110FX-19822	4,5	96-122	Double
ER3102FX-19864	4,5	96-122	With buckle



ERGODYNE TOOL LINE, TURN CARAB HOOK

MAIN FEATURES:

- Made with shock absorbing tubular nylon straps and lock stitching on bothends for extra safety;
- Better predicts the direction of the load on the carabiner and prevents the lanyard from bendingthe carabiner slides.

* Also available in stainless steel (3111 FX / 3101 FX)

ARTICLE CODE	WORK LOAD (kg)	LENGHT(cm)	TYPE
ER3108FX-19808	6,8	96-122	1 carabiner
ER3118FX-19828	6,8	96-122	2 carabiners



ERGODYNE TOOL LINE DBL LOCKING WITH SWIVEL

MAIN FEATURES:

- Shock absorbing properties reduce the dynamic force on the body or adifferent anchor point if a fall occurs;
- Durable 1680 denier polyester elastic blend fabric stretches from 96-122cm;
- Low profile lightweight design reduces the risk of snagging and extra weight.

ARTICLE CODE	WORK LOAD (kg)	LENGHT(cm)	TYPE
ER3109FX-19809	11,3	96-122	Single lock
ER3119FX-19829	11,3	96-122	Double locks



ERGODYNE TOOL LINE FIRE + CUT RESISTANT

MAIN FEATURES:

- Aramid fiber reduces the risk of burns and degradation when exposed to sparks, flames, heat and sharp edges/materials;
- For strength and durability in harsh working environments;
- For safety when working near electrical circuits or heat.

ARTICLE CODE	WORK LOAD (kg)	LENGHT(cm)	TYPE
ER3120-19720	4,5	96-122	Double loops
ER3121-19721	4,5	96-122	Double locks



ERGODYNE SPIRAL SNAP LINE

MAIN FEATURES:

- Stainless steel carabiner;
- PU-coated steel cable.

ARTICLE CODE	WORK LOAD (kg)	LENGTH (cm)	COLOUR
ER3130S-19130-EU	0,9	max. 127	Lime
ER3130M-19131-EU	2,2	max. 127	Orange
ER3156-19161-EU	0,9	max. 122	Black
ER3166-19162-EU	0,9	max. 122	Black



ERGODYNE ACCESSORIES



ARTICLE CODE	NAME	WORK LOAD (kg)	SIZE	QUANTITY	COLOUR
ER3700-19705	Web Tool Tail	0,9	14 cm	6	Black
ER3700-19703	Web Tool Tail	0,9	9 cm	6	Black
ER3700-19704	Web Tool Tail	0,9	9 cm	6	Orange
ER3703-19767	Elastic Tool Tether	6,8	38 cm	3	Lime
ER3713-19765	Elastic Tool Tether Swivel	4,6	38 cm	3	
ER3103-19068	Detachable loop with buckle	2,26	3,2 cm	3	
ER3755-19755	Tape Trap self-adhesive		3,7 m		Grey
ER3723-19723	Cold Shrink Tool Trap		S - 7,6 cm		Black
ER3724-19724	Cold Shrink Tool Trap		M - 10,1 cm		Black
ER3726-19726	Cold Shrink Tool Trap		L - 15,2 cm		Black
ER3790-19792	Bow shackle	6,8	S	2	Stainless steel
ER3790-19793	Bow shackle	6,8	M	2	Stainless steel
ER3790-19794	Bow shackle	6,8	L	2	Stainless steel
ER3790-19795	Bow shackle	6,8	XL	2	Stainless steel
ER3740-19740	Slips @		S		Black and orange
ER3740-19741	Slips @		M		Black and orange
ER3740-19742	Slips @		L		Black and orange
ER3740-19743	Slips @		XL		Black and orange

TOOL LINES

ERGODYNE POWER TOOL TRAP

MAIN FEATURES:

- 1000D nylon, water resistant;
- Fits most power tool batteries;
- Exclusive tools.



ARTICLE CODE	SIZE	COLOUR
ER3780-19782-EU	S	Black
ER3780-19784-EU	L	Black

ERGODYNE ROLL SIZE HOLDER

MAIN FEATURES:

- Polyester;
- Galvanized D-ring;
- Exclusive tool.



ARTICLE CODE	COLOUR
ER3770-19770-EU	Orange

ERGODYNE RADIO HOLSTER

MAIN FEATURES:

- Robust polyester with strong elastic Velcro straps protect expensive radios;
- Zinc-plated die-cast alloy D-ring on the back for attachment to lanyards.



ARTICLE CODE	SIZE	COLOUR
ER3772-19772	S	Black
ER3772-19773	L	Black

ERGODYNE HELMET LANYARD

MAIN FEATURES:

- Easy to attach to safety helmets and other small hand tools for storage.



ARTICLE CODE	TYPE	COLOUR
ER3155-19155	Elastic	Lime
ER3158-19159	Coil	Lime

ERGODYNE PHONE COVER

MAIN FEATURES:

- Water resistant main material protects the mobile phone against rain, snow, dirt, dust and sand;
- Clear touchscreen material ensures full screen and camera functions.



ARTICLE CODE	SIZE (cm)	COLOUR
ER3760-19763	18x8	Black
ER3760-19762	21,5x9	Black

ERGODYNE TABLET COVER

MAIN FEATURES:

- Water resistant main material protects tablets against rain, snow, dirt, dust and sand;
- Clear touchscreen material ensures full screen and camera functions.



ARTICLE CODE	SIZE	COLOUR
ER3765-19764	Standaard	Black

BRACKET FOR TOOLS

MAIN FEATURES:

- Stainless steel bracket with built-in connection point for attachment of tools is corrosion-resistant and resistant to weather influences.

ARTIKELCODE	TYPE	COLOUR
ER3796-19796	Drill	Stainless Steel
ER3797-19797	Grinder	Stainless Steel
ER3798-19798	Pneumatic	Stainless Steel



ERGODYNE GLOVE CLIP HOLDER

MAIN FEATURES:

- With belt attachment;
- For tools, accessories and other items;
- Ultra-light and durable;
- Prevents tools from falling.

ARTICLE CODE	COLOUR
ER3400-19112-EU	Black
ER3400-191180-EU	Orange
ER3400-19119-EU	Lime



ERGODYNE GLOVE BELT CLIP

MAIN FEATURES:

- Keeps face masks, gloves, keys, towels and more to keep them handy;
- Easy to open and stays securely closed on your gloves or other equipment;
- Ultra-resilient acetal copolymer and thermoplastic polyurethane materials are non-conductive and temperature resistant.

ARTICLE CODE	COLOUR
ER3405-19122-EU	Black
ER3405-19128-EU	Orange
ER3405-19129-EU	Lime

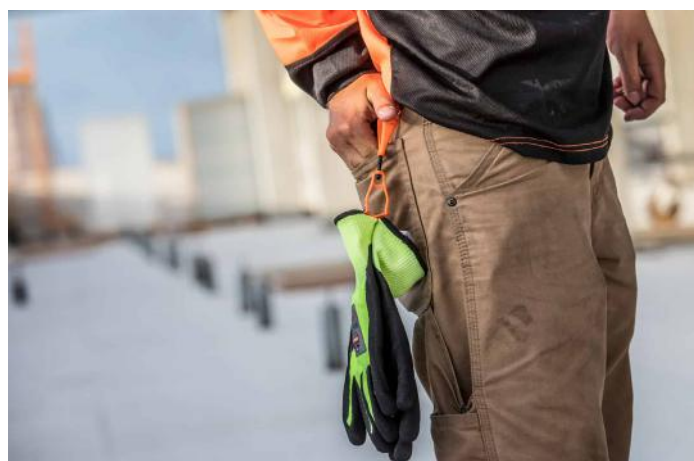


ERGODYNE GLOVE CLIP ROTATING

MAIN FEATURES:

- Keeps face masks, gloves, keys, towels and more to keep them handy;
- Double clip model can be connected to clothing, belt loops, tool belts, etc;
- Prevents the gripper and held sprocket get stuck.

ARTICLE CODE	COLOUR
ER3420-19412-EU	Black
ER3420-19418-EU	Orange
ER3420-19419-EU	Lime



TOOL LINES

ELLERsafe TOOL LANYARD

MAIN FEATURES:

- Elastic tool lanyard;
- Lanyard to be attached to belt or positioning belt;
- Exclusive tools.



ARTICLE CODE	LENGTH (cm)
FP-AY002	100-137

ELLERsafe TOOL STRAP, FOR WRIST

MAIN FEATURES:

- Lanyard with wrist strap;
- Adjustable;
- Exclusive tools.



ARTICLE CODE	LENGTH (cm)
FP-AY001	20

ERGODYNE TOOL LANYARD

MAIN FEATURES:

- Tool lanyard to attach to wrist;
- Velcro fastening;
- Elastic lanyard;
- Exclusive tools.

ARTICLE CODE	WORK LOAD (kg)	LENGTH (cm)	COLOUR
ER3115-19042-EU	1	13 - 18	Black
ER3115-19052-EU	1	18 - 23	Black



ERGODYNE TOOL STRAP

MAIN FEATURES:

- Tool lanyard for wrist;
- Elastic;
- 1 size.

ARTICLE CODE	KOPPELING	COLOUR
ER3114-19056-EU	Carabiner	Black
ER3116-19057-EU	Quick release	Black



ERGODYNE TOOL STRAP

MAIN FEATURES:

- Extendable lanyard with 2 stainless steel carabiners;
- Detachable tool section;
- Exclusive tools;
- Up to max. 122cm.



ARTICLE CODE	LENGTH (cm)	COLOUR
ER3000-19300-EU	122	Black

ERGODYNE TOOL STRAP

MAIN FEATURES:

- Extendable lanyard with stainless steel carabiner and loop;
- Detachable tool section with quick-release fastener;
- Exclusive tools;
- Up to max. 122cm.



ARTICLE CODE	LENGTH (cm)	COLOUR
ER3001-19301-EU	122	Black

ERGODYNE TOOL BAG

MAIN FEATURES:

- Maximum load 9kg;
- Maximum load d-ring 2.3kg;
- Certified 5:1 safety factor;
- 25cm x 15cm x 29cm.

ARTICLE CODE	COLOUR	CLOSURE
ER5517-13647	Grey	Zipper
ER5527-13627	Orange	Buttons



ERGODYNE TOPPED BOLT TOOL BAG

MAIN FEATURES:

- BUILT TO LAST - Durable 1680D ballistic polyester shell with 600D polyester ripstop lining and nickel plated rivets for reinforcement
- ONE-HANDED CINCH TOP - Drawstring closure for easy access and secure tool storage on height;
- DIMENSIONS - 25cm L x 13cm W x 23cm;
- Complies with ANSI / ISEA 121-2018 - Prevents item dropping, third party certified to a maximum load of 9.1 kg.

ARTICLE CODE	COLOUR	SIZE
ER5926-13426	Grey	M
ER5928-13428	Grey	L



ERGODYNE ARSENAL TOOL BAG

MAIN FEATURES:

- Trapdoor closure for safety and security;
- Patented nickel-plated rain drain;
- 2 tool loops on the outside;
- Maximum safe working capacity: 9.0 kg;
- Third party certified with a safety factor of 4:1;
- 19cm x 19cm x 30cm (7.5in L x 7.5in W x 12in H).

ARTICLE CODE	COLOUR	MATERIAL
ER5528-13628	Black	Canvas
ER5538-13638	Orange	PVC



PETZL TOOL BAG

MAIN FEATURES:

- Storing tools during hanging work;
- "Tanka" drawstring closure;
- Easy attachment to all harness belts.

ARTICLE CODE	WORK LOAD (KG)	COLOUR	CONTENTS (LTR)	WEIGHT (G)
PE-S047BA00	3	Geel	1,5	105
PE-S047BA01	5	Geel	3	170
PE-S047BA02	15	Geel	6	240



STORAGE & TRANSPORT

PETZL DUFFLE

MAIN FEATURES:

- Transport bag; ergonomic and handy;
- Padded back and shoulder straps for comfortable carrying;
- Two carrying options: as a backpack or on the shoulder;
- Four compression straps to optimize bag volume and shifting of equipment during transportation;
- Quick buckles allow the shoulder straps to be completely removed.



ARTICLE CODE	CONTENTS (LTR)	WEIGHT (G)
PE-S045AA00	65	1350
PE-S045AA01	85	1550

PETZL BUCKET TOOL BUCKET

MAIN FEATURES:

- Capacity: 15L, 30L or 45L;
- Standard in the Colour yellow;
- Also available in black and red.



ARTICLE CODE	CONTENTS (LTR)	WEIGHT (G)
PE-S001AA00	15	465
PE-S001AA01	30	735
PE-S001AA02	45	890

ELLERsafe BACKPACK AX030

MAIN FEATURES:

- PVC;
- 60 L version has lifting handles;
- Yellow.



ARTICLE CODE	COLOUR	CONTENTS (LTR)
FP-AX030-15-Y	Yellow	20
FP-AX030-30-Y	Yellow	40
FP-AX030-45-Y	Yellow	60

ELLERsafe PVC CARRY BAG

MAIN FEATURES:

- Sustainable bags;
- Adjustable shoulder straps;
- Max. load: 30kg;
- Also available in: Blue and Red.

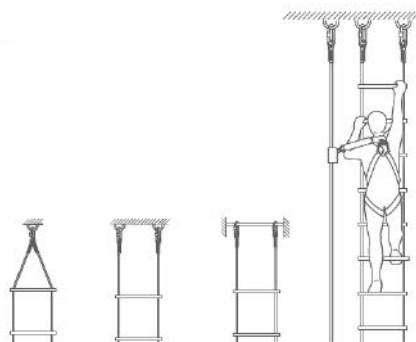


ARTICLE CODE	MEASUREMENTS (cm)
FP-AX010-Y	38 x 38 x 45
FP-AX011-Y	30 x 30 x 60
FP-AX012-Y	40 x 40 x 80
FP-AX011S-Y	30 x 30 x 60

ELLERsafe ROPE LADDER

MAIN FEATURES:

- Rope ladder;
- 8mm kernmantel rope;
- Aluminum rungs;
- Maximum length: 30m;
- Width: 310mm;
- Distance between rungs: 310mm.



ARTICLE CODE	WIDTH (mm)	LENGTH (m)	WEIGHT (kg)
FP-DL010-5	310	5	2,7
FP-DL010-10	310	10	5,5
FP-DL010-15	310	15	8,5

ELLERsafe STEEL WIRE LADDER

MAIN FEATURES:

- Galvanized 4mm steel cable;
- Aluminum rungs;
- Maximum length: 30m;
- Width: 210mm;
- Distance between rungs: 310mm.

ARTICLE CODE	WIDTH (mm)	LENGTH (m)	WEIGHT (kg)
FP-DL011-5	210	5	1,5
FP-DL011-10	210	10	3
FP-DL011-15	210	15	4,5



ELLERsafe STEEL WIRE LADDER

MAIN FEATURES:

- Galvanized 4mm steel cable;
- Aluminum rungs;
- Maximum length: 30m;
- Width: 310mm;
- Distance between rungs: 310mm.

ARTICLE CODE	WIDTH (mm)	LENGTH (m)	WEIGHT (kg)
FP-DL012-5	310	5	2,9
FP-DL012-10	310	10	5,8
FP-DL012-15	310	15	8,7



HOOKS

ELLERsafe CARABINER AZ 011

EN 362

MAIN FEATURES:

- Carabiner with screw closure;
- Opening: 18mm;
- Max. tensile strength main shaft: 25kN.



ARTICLE CODE	MATERIAL	OPENING (mm)
FP-AZ011	Steel	18
FP-AZ011-1	Stainless Steel	18

ELLERsafe CARABINER AZ 017

EN 362

MAIN FEATURES:

- Steel carabiner with screw closure;
- Opening: 25mm;
- Max. tensile strength main shaft: 20kN.



ARTICLE CODE	MATERIAL	OPENING (mm)
FP-AZ017	Steel	25

ELLERsafe CARABINER AZ 011T

EN 362

MAIN FEATURES:

- Steel carabiner with Twist-Lock;
- Opening: 19mm;
- Max. tensile strength main shaft: 20kN.



ARTICLE CODE	MATERIAL	OPENING (mm)
FP-AZ011T	Steel	19

ELLERsafe CARABINER AZ017T

EN 362

MAIN FEATURES:

- Steel carabiner with Twist-Lock;
- Opening: 25mm;
- Max. tensile strength main shaft: 20kN.



ARTICLE CODE	MATERIAL	OPENING (mm)
FP-AZ017T-Black	Steel	25
FP-AZ017T	Steel	25

ELLERsafe CARABINER AZ 012T

EN 362

MAIN FEATURES:

- Aluminum carabiner with Twist-Lock;
- Opening: 17mm;
- Max. tensile strength main shaft: 20kN.



ARTICLE CODE	MATERIAL	OPENING (mm)
FP-AZ012T	Aluminium	17

ELLERsafe CARABINER AZ 014

EN 362

MAIN FEATURES:

- Aluminum carabiner with screw closure or double Twist Lock;
- Opening: 24mm;
- Max. tensile strength main shaft: 20kN.



ARTICLE CODE	MATERIAL	OPENING (mm)
FP-AZ014	Aluminium	24
FP-AZ014T	Aluminium	24

ELLERsafe CARABINER AZ 018

EN 362

MAIN FEATURES:

- Steel carabiner with screw closure;
- Opening: 27mm;
- Max. tensile strength main shaft: 20kN.



ARTICLE CODE	MATERIAL	OPENING (mm)
FP-AZ018	Steel	27

ELLERsafe SCAFFOLDING HOOK

EN 362

MAIN FEATURES:

- Steel scaffold pipe hook with doublesecurity;
- Max. tensile strength main shaft: 20kN.



ARTICLE CODE	MATERIAL	OPENING (mm)
FP-AZ022	Steel	56
FP-AZ023	Steel	64

ELLERsafe CARABINER AZ 018T

EN 362

MAIN FEATURES:

- Steel carabiner with Twisk-lock;
- Opening: 27mm;
- Max. tensile strength main shaft: 20kN.



ARTICLE CODE	MATERIAL	OPENING (mm)
FP-AZ018T	Steel	27

ELLERsafe SCAFFOLDING HOOK AZ 024

EN 362

MAIN FEATURES:

- Aluminum scaffold pipe hook with doublesecurity;
- Opening: 110mm;
- Max. tensile strength main shaft: 20kN.



ARTICLE CODE	MATERIAL	OPENING (mm)
FP-AZ024	Aluminium	110

ELLERsafe CARABINER

EN 362

MAIN FEATURES:

- Automatic closing aluminumsnap hook;
- Opening: 63mm;
- Max. tensile strength main shaft: 20kN.



ARTICLE CODE	MATERIAL	OPENING (mm)
FP-AZ122	Aluminium	63
FP-AZ125	Aluminium	88

ELLERSAFE SCAFFOLDING HOOK AZ029

EN 362

MAIN FEATURES:

- Steel & composite;
- 50mm opening;
- 25kN;
- 350gr.



ARTICLE CODE	MATERIAL	OPENING (mm)
FP-AZ29	Steel & composite	50

HOOKS

PETZL OK CARABINER

EN 12275, EN 362

MAIN FEATURES:

- Aluminum carabiner;
- Keylock system prevents unwanted hooking;
- Opening: 22mm;
- Max. tensile strength main shaft: 25kN;
- Also available in black.



M33ATL

M33ASL

ARTICLE CODE	MATERIAL	OPENING (mm)	CLOSURE
PE-M33ASL	Aluminium	22	Screw closure
PE-M33ATL	Aluminium	22	Triple-Lock

PETZL OXAN CARABINER

EN 362

MAIN FEATURES:

- Steel carabiner with screw closure;
- Keylock system of the gate;
- Opening: 22mm;
- Max. tensile strength main shaft: 38kN;
- Also available in black.



ARTICLE CODE	MATERIAL	OPENING (mm)
PE-M72ASL	Steel	22
PE-M72ATL	Steel	22

PETZL AM'D CARABINER

EN 12275, EN 362

MAIN FEATURES:

- Aluminum carabiner;
- Gap: 24 - 25mm;
- Max. tensile strength main shaft: 27 kN;
- Also available in black.



ARTICLE CODE	MATERIAL	OPENING (mm)	CLOSURE
PE-M34ASL	Aluminium	24 - 25	Screw closure
PE-M34ATL	Aluminium	24 - 25	Triact-Lock
PE-M34ABL	Aluminium	24 - 25	Ball-Lock

PETZL VULCAN CARABINER

EN 12275, EN 362

MAIN FEATURES:

- Also available in steel.



ARTICLE CODE	MATERIAL	OPENING (mm)	CLOSURE
PE-M073AA01	Black Steel	29	Screw closure
PE-M073AA00	Steel	29	Screw closure
PE-M073BA00	Steel	28	Triact-Lock

PETZL WILLIAM CARABINER

EN 362

MAIN FEATURES:

- Asymmetrical aluminum carabiner with, Screw closure, Triact Lock or Ball Lock;
- Opening: 27mm;
- Max. tensile strength main shaft: 27kN;
- Also available in black.



ARTICLE CODE	MATERIAL	OPENING (mm)	CLOSURE
PE-M36ASL	Aluminium	27	Screw closure
PE-M36ATL	Aluminium	27	Triple-Lock
PE-M36ABL	Aluminium	27	Ball-Lock

PETZL VERTIGO

EN 362

MAIN FEATURES:

- TWIST-LOCK automaticlocking system is easy to use;
- Wide opening for easy connection of the connector;
- Keylock system, to prevent involuntary hooking from the connector.



ARTICLE CODE
PE-M40A RLA

PETZL MGO OPEN CARABINER

EN 362, EAC

MAIN FEATURES:

- Aluminum carabiner;
- Lightweight, ergonomic;
- Connecting eye;
- Max. tensile strength main shaft: 23kN.



ARTICLE CODE	OPENING (mm)
PE-MG0060	63
PE-M080AA00	110

PETZL OPEN RING

EN 362

MAIN FEATURES:

- Designed for easy connection of equipment;
- Wide opening, for rope installation with sewn ends.



ARTICLE CODE
PE-P28

PETZL EASHOOK OPEN CARABINER

EN 362, EAC

MAIN FEATURES:

- Aluminum carabiner;
- double lock;
- Opening: 25mm (extra wide);
- Max. tensile strength main shaft: 25kN.



ARTICLE CODE	COLOUR
PE-M043AA00	Aluminium
PE-M043AA01	Black

PETZL CAPTIV

EN 362

MAIN FEATURES:

- Correct load on the longitudinal axis of the carabiner;
- Prevents twisting of the carabiner when using;
- Can be combined with the OR, OXAN carabiners;
- Material: Nylon;
- Sale per 10.



ARTICLE CODE
PE-M093AA00

PETZL OMNI CARABINER

EN 362, EN 12275 type B

MAIN FEATURES:

- Aluminum carabiner;
- Opening: 22mm;
- Max. tensile strength main shaft: 20 kN.



ARTICLE CODE	SLUITING
PE-M37SL	Screw closure
PE-M37TL	Triple-Lock

SNELSHAKELS

EN 362

MAIN FEATURES:

- Stainless Steel.



ARTICLE CODE	TYPE
FP-AZ090	Maillon
FP-AZ091	Delta
PE-P15	Maillon
PE-P11-8	Delta

LOAD ARRESTER

ELLERsafe LOAD ARRESTER LA300

Device is designed to arrest a fall of objects (lifted materials, light systems, etc) after the primary systems failure. The device will stop the fall and limit the impact force.

ATTENTION! The device is not intended to protect people.

MAIN FEATURES:

- Max 300kg;
- swivel;
- rugged composite housing ;
- comfortable handle;
- 5mm galvanized steel cable;
- available in 6, 8 and 10 m.

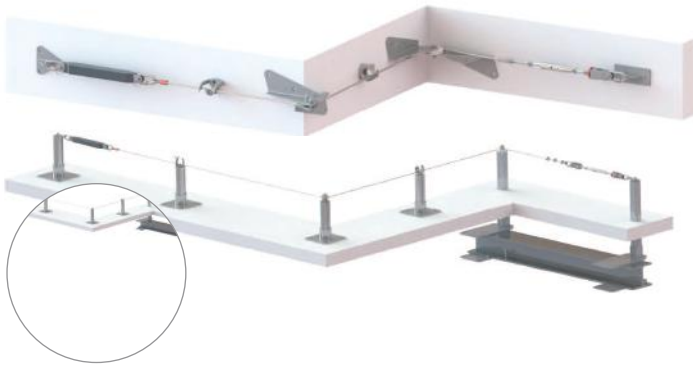


ARTICLE CODE	LENGTH (M)
FP-LA300-06	6
FP-LA300-08	8
FP-LA300-10	10



PERMANENT FALL PROTECTION

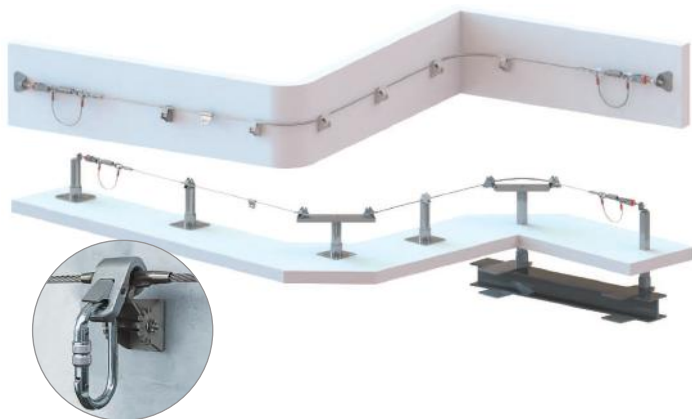
WE CAN ALSO PROVIDE A CUSTOM SOLUTION FOR THE INSTALLATION OF PERMANENT FALL PROTECTION ON LOCATION.



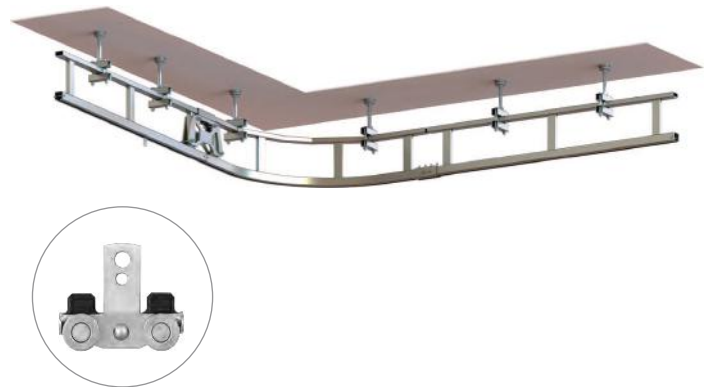
ELLERsafe PERMANENT HORIZONTAL CABLE SYSTEM PRIM



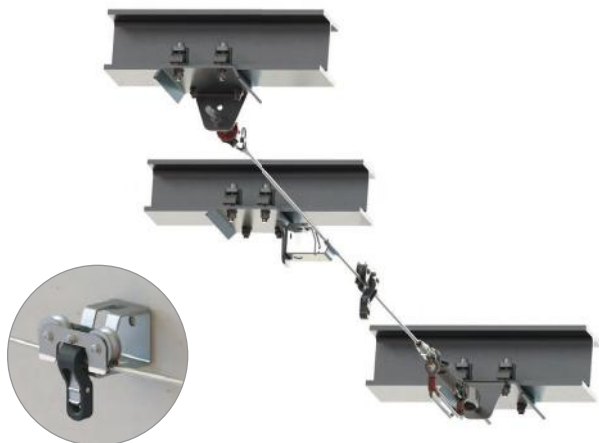
ELLERsafe PERMANENT HORIZONTAL CABLE SYSTEM PROLINER



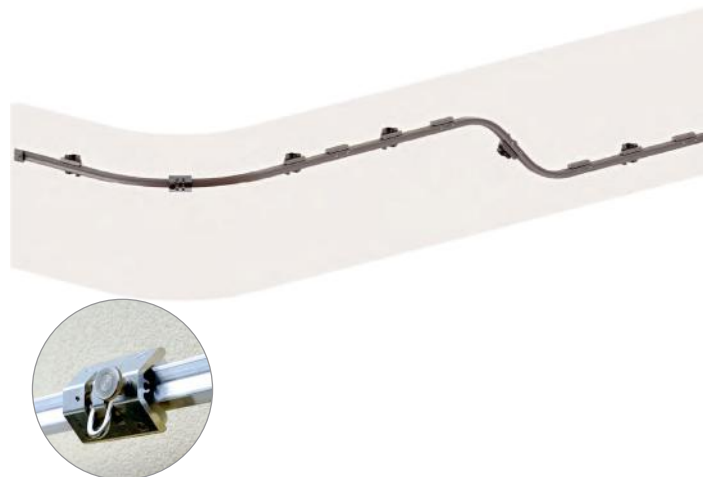
ELLERsafe PERMANENT HORIZONTAL LIFE LINE DUO



ELLERsafe PERMANENT HORIZONTAL RAIL SYSTEM TRASER



ELLERsafe PERMANENT HORIZONTAL ANCHOR SYSTEM MONOLINE



ELLERsafe PERMANENT HORIZONTAL CABLE SYSTEM MARAN

REPAIRS, TESTING AND CERTIFICATION



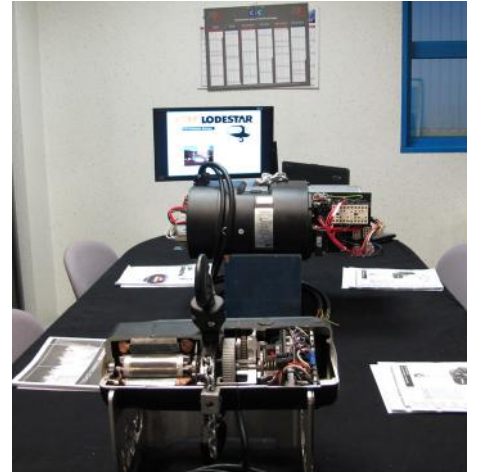
SPARE PARTS

We carry a large stock of hoist parts. Visit our website or call one of our employees.



REPAIRS, TESTING AND CERTIFICATION

You can also contact us for repairs, testing, annual inspections and (re) certification. Certificates are available in the cloud.



TRAINING

We offer training covering operation, maintenance needs and troubleshooting of your CM electric hoists like the "CM Motor School" and training "ELLERsafe".

OUR BRANDS



Access the inaccessible®



LOUIS REYNERS

EXCELS IN HOISTING, LIFTING AND FALL PROTECTION



tel. +31 (0) 75 650 47 50
info@lr.nl

Symon Spiersweg 13-A
1506 RZ Zaandam

WWW.LR.NL

