



PTPA

PATCHOGUE THEATRE
FOR THE PERFORMING ARTS



EST 1923



2025-2026
SEASON PROGRAM

PATCHOGUETHEATRE.ORG

Reimagine. Reinvest. Recruit. Revitalize.

Southside Hospital is now **South Shore University Hospital**

Northwell Health
proudly reveals
a transformation:

**Southside Hospital
is now South Shore
University Hospital**

Transformation is profound change. The kind you can see and experience. It's facilities, remodeled. Top doctors, recruited. And capabilities, reimagined.

It's making vital updates to safely and effectively care for our community. So whether we treat your heart, your brain—or your loved one—you'll know you're in the very best hands.

South Shore University Hospital is more than a rename; it's a remarkable transformation—and it's all for you.

Visit Northwell.edu/Transformation



**South Shore
University Hospital**
Northwell Health®



**South Shore
University Hospital**
Northwell Health®



**PATCHOGUE VILLAGE CENTER
FOR THE PERFORMING ARTS, INC.**

71 East Main Street, Downtown Patchogue, NY

STAFF

Michele Rizzo-Berg, *Executive Director*

Matt McKone, *Director of Operations*

Justin Pandolfi, *General Manager*

Keri Meras, *Controller*

Patrick Gordon, *Technical Director*

Alex Russo, *Facilities Manager*

Tiana Christoforidis, *Director of Educational Outreach*

Anne Marie Sarich, *Volunteer Coordinator*

Gail Flug, *Graphics / Marketing Coordinator*

Caitlin Calle, *PR / Social Media Coordinator*

BOARD OF DIRECTORS

Ryan Murphy, *Chairperson* | Mary Pontieri, *Vice Chairperson*

Jean Fuoco, *Secretary*

Linda Ingrisano, Barbara Kane, Dan Kellachan, Jack Krieger

Kenneth Meyer, Jr., Robert Silver

Victor Yannacone, Jr., *Chairperson Emeritus*

SPECIAL THANKS TO

THE INCORPORATED VILLAGE OF PATCHOGUE

Paul V. Pontieri, Jr., *Mayor* | Jack Krieger, *Deputy Mayor*

& VILLAGE TRUSTEES

Our Mission: Patchogue Theatre for the Performing Arts (PTPA) is a 501 {c} (3) nonprofit arts organization that enriches, educates, and entertains a diverse audience by cultivating and showcasing a broad variety of performing artists. Patchogue Theatre serves as an innovative cultural resource for its community and the Long Island region by collaborating with neighboring organizations and fostering educational opportunities.

Our Volunteers

Simone Adams
Missy Attchue
Cheryl Becker
Lynette Cardona
Carol Cary
John Calarco
JoAnn Cavallino
Joanne Cicerello
Gerard Clark
Fran Clark
Jackie Costantino
Connie Delise
Geraldyn Diamond
John Dockswell
Rita Dockswell
Tom Donegan
Carolann Drozdowski
Richard Drozdowski
Ryan Drozdowski
Jody Evola
Patty Felice
Charlie Felsen
Ricki Rice-Felsen
Pia Finnigan
Patti Flicker
Deborah Flinter
Karen Fujii
Gerry Gallagher
Jan Gallagher
David Garambone
Gillian Gill

Jane Hafner
Laurie Hirtreiter
Lee Horn
Lucy Johnson
Jayne Kaht
Bob Koenig
Lorraine LaFemina
Muriel Lanier
Cara Levine
Joanne Liguori
Pat Linken
John Madden
Steven Maloney
Sondra Mastrianni
Thomas Melia
Teresa Murtha
Madeline Nasta
Celmira Pachon
Ted Ramos
Karen Reilly
Dianne Rosado
Darlene Rotolo
Regina Schroder
Diane Stoddard
Thomas Tallerico
Claudia Troiano
Susan Usefof
Louis Vispoli
Thomas Vogel
Jim Wipper
Marie Wipper

A MESSAGE FROM OUR
EXECUTIVE DIRECTOR
MICHELE RIZZO-BERG



Welcome to the Patchogue Theatre for the Performing Arts! As the Executive Director of this esteemed venue, I am truly honored to curate the performances that grace our stage. Each event we present is a celebration of the rich heritage we have cultivated over the past century.

For over one hundred years, this theater has been the heart of a community that values and nurtures the arts. As we look forward to another year, our aim is to continue offering a diverse range of exceptional entertainment, from live theater and rock concerts to comedy shows and performances by talented singer-songwriters.

Over the years, our stage has welcomed Grammy-winning artists, Rock and Roll Hall of Famers, and gifted performers from television and film, establishing our reputation as a premier entertainment venue on Long Island.

While live music remains a cornerstone of our programming, our theater is a versatile space that hosts an acting program for young adults, meetings, art exhibitions, graduations, recitals, and much more. We welcome over 50,000 guests each year, maintaining our commitment to provide high-quality arts programming that entertains, educates, and inspires.

By supporting our theater, you are not only engaging with the arts but also helping to enhance the economic vitality of our community. The Patchogue Theatre has been instrumental in the growth of our downtown area, drawing audiences from near and far.

This achievement would not be possible without the steadfast support of Mayor Paul Pontieri, the Patchogue Theatre Board, Village Trustees, our vibrant Chamber of Commerce, volunteers, and, most importantly, our dedicated guests, donors, advertisers, sponsors, and VIP members.

Tonight, we invite you to be our guest and immerse yourself in the magic of live entertainment. So, sit back, relax, and enjoy the show!

Warmly,

Michele Rizzo-Berg
Executive Director



2026 GUITAR RAFFLE

WIN AN AUTOGRAPHED GUITAR SIGNED BY
PATCHOGUE THEATRE'S 2026 PERFORMERS!

ONE CHANCE \$5.00

FIVE CHANCES \$20.00

**PURCHASE TICKETS AT
PATCHOGTHEATRE.ORG OR
IN THE LOBBY AT SELECT SHOWS**

**YOUR CONTRIBUTION WILL
HELP SUPPORT
PATCHOGUE THEATRE FOR
THE PERFORMING ARTS**

**WINNER WILL BE DRAWN
JANUARY 2027**



Guitar generously donated by
Family Melody Center
77 S Ocean Ave, Patchogue



Ways to Give

AS A 501(C)3 NOT-FOR-PROFIT, WE RELY ON REVENUE FROM GRANTS, SPONSORSHIPS, AND PEOPLE LIKE YOU TO ENSURE THAT WE CONTINUE TO BRING EXCEPTIONAL ENTERTAINMENT TO THE GREATER LONG ISLAND AREA.



WALL OF FAME

DEDICATE A 3 X 8" BRONZE PLAQUE ON OUR WALL OF FAME IN YOUR NAME, YOUR FAMILY'S NAME, IN MEMORY OF A LOVED ONE, OR YOUR BUSINESS / ASSOCIATION FOR ALL TO SEE IN OUR THEATRE LOBBY.



GUITAR RAFFLE

ENTER TO WIN AN AUTOGRAPHED GUITAR SIGNED BY ARTISTS WHO PERFORM AT PATCHOGUE THEATRE IN 2024. RAFFLED AT END OF YEAR. TICKETS: 1 FOR \$5 | 5 FOR \$20 PURCHASE ONLINE.



YOUR NAME IN LIGHTS

LIGHT UP YOUR PERSONALIZED MESSAGE, BIG AND BRIGHT, ON MAIN STREET WITH OUR STATE-OF-THE-ART, DIGITAL MARQUEE FOR ONE HOUR ON THE DAY AND TIME OF YOUR CHOICE

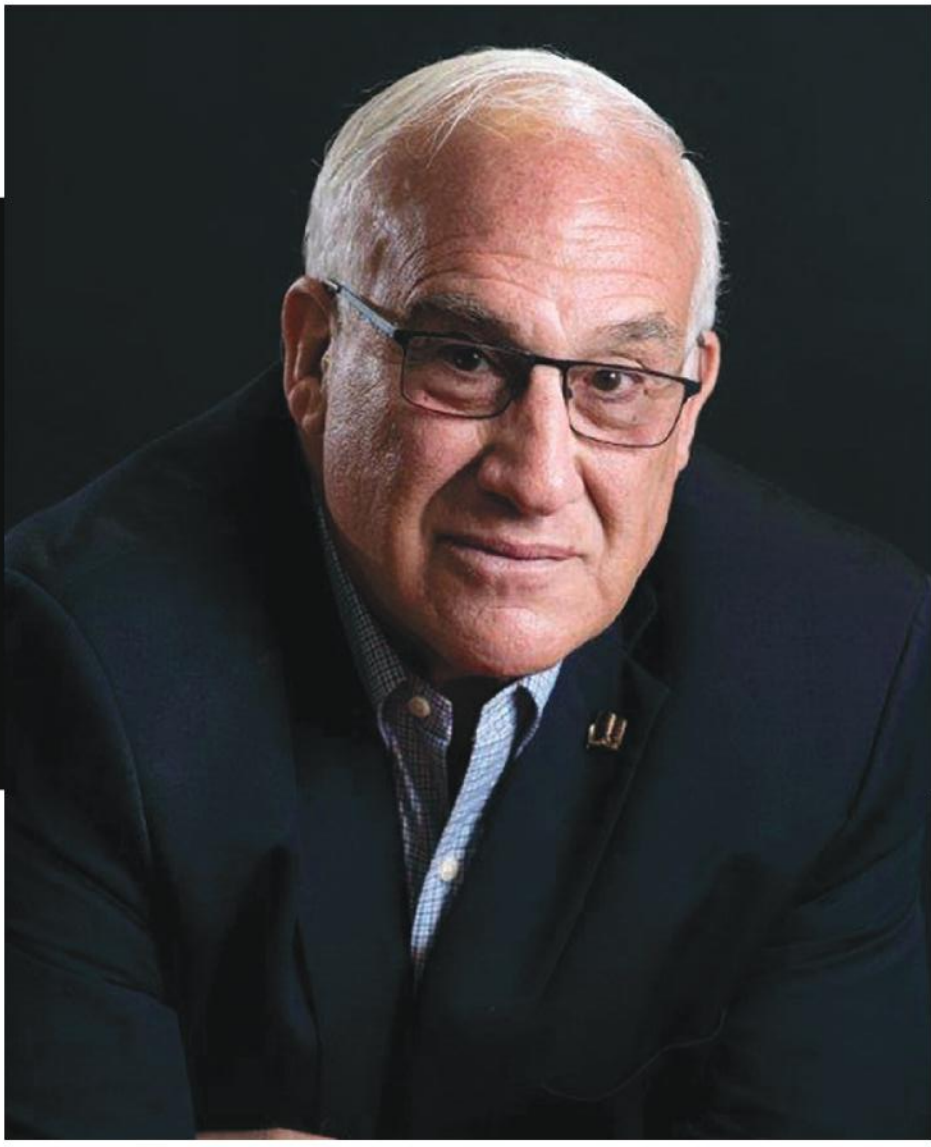


SEAT PLAQUE

DEDICATE A 1 X 2.5" BRONZE SEAT PLAQUE IN YOUR NAME, YOUR FAMILY'S NAME, IN MEMORY OF A LOVED ONE, OR YOUR BUSINESS / ASSOCIATION.

SCAN FOR
MORE INFO





A MESSAGE FROM
PATCHOGUE MAYOR
PAUL V. PONTIERI, JR.

On behalf of the Board of Trustees and the residents of the Incorporated Village of Patchogue, I'd like to welcome you to the Patchogue Theatre for the Performing Arts.

Many factors have contributed to the Theatre's success, including the dedication and hard work of its Board of Directors and staff. First and foremost, it has always been the unselfish contribution of time and talent by our legion of volunteers, without whom this magnificent venue could not operate. They are our ticket-takers, ushers and greeters at every performance. It is to them that we owe our largest debt of gratitude.

I hope you enjoy your time at Patchogue Theatre for the Performing Arts and I invite you to enhance your entertainment experience, before and after the show, and visit one of the many fine shops, restaurants and pubs within walking distance of the Theatre. I'm sure you'll be happy you did.

Yours truly,
Mayor Paul V. Pontieri, Jr.



SUPPORT THE ARTS AND GET THE STAR TREATMENT WITH A PTPA VIP MEMBERSHIP!



Your PTPA VIP Membership not only helps support our programming, it gives you **first dibs on the best seats before the general public**, plus a lot more!

Choose from 2 Packages which include:

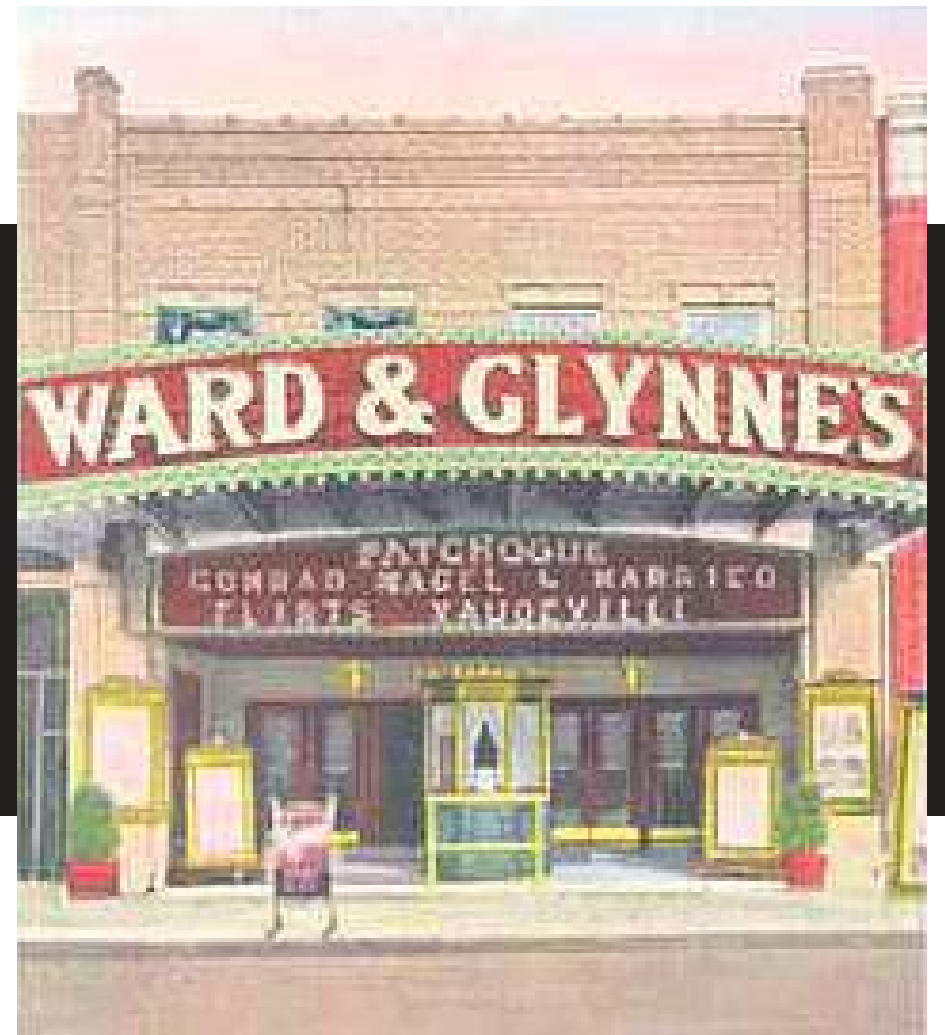
- Access to Ticket Pre-sales (no code needed)
 - Tickets with Zero Service Fees
 - Advance Notice of New Shows
 - Exclusive Ticket Offers
 - Concession/ bar discounts
- ...and more!



SCAN HERE FOR MORE INFO



**PATCHOGUE THEATRE FOR THE
PERFORMING ARTS: ENTERTAINING
THE COMMUNITY FOR OVER 100 YEARS
A LITTLE BIT OF HISTORY**



For 100 years, the Village of Patchogue has had a stage at the center of its community - the historic Patchogue Theatre venue that originally opened as Ward & Glynne's Theater in 1923. In its day, Patchogue Theatre attracted first-run feature films, Broadway productions, silent films, the very best in burlesque, vaudeville and live music performances with acts such as Bette Davis, Eddie Foy and the Fabulous Foys, The Paul Whiteman Orchestra, The Marx Brothers, John Philip Sousa and Rose's Royal Midgets, to name a few. During Patchogue Theatre's early years, the price of admission only cost 40 cents for adults and half that price for children. Glynne operated the Theatre until the Great Depression, when it was purchased by Prudential Playhouses, Inc. Not long after, the days of vaudeville had come to a close, but an evolving film industry and updated sound equipment helped maintain the Theatre as a major venue for first-run films on Long Island, while also serving as a community center for bingo, sing-alongs and other activities.

After a fire hit the Theatre Lobby in 1958, the Theatre was redecorated and designed in a simple and austere manner, with much of the ornate decor simply covered up by plywood, drywall and wallpaper. Patchogue Theatre continued to operate solely as a movie house, and in 1982, the ground floor was divided into two theater screens with the addition of a ceiling to extend the balcony level for a third screen. Essentially, this turned the Theatre into a "triplex," which it continued to operate as until 1987 when the building was closed. The combination of both an economic recession and the opening of a 12 screen multiplex theater nearby no longer allowed Patchogue Theatre to be profitable as a movie house. It stood empty for eight years, and an investigation of the building by village officials and business leaders in October 1994 found that much of the original decor had been preserved under the drywalls, wallpaper and plywood that was installed in the late 1950s.

In 1996, three local businessmen came up with the initial funds to purchase the Theatre while the Incorporated Village of Patchogue applied for grants to renovate and restore the venue to its former

A Message of Hope from Patchogue Theatre

This video was produced for Patchogue Theatre by Benny Migs Photo and paid for by a Village of Patchogue Business Improvement District (BID) "Arts in Patchogue" grant. Thank you BID Executive Director Dennis Smith, the BID board and Village Trustee Thomas Ferb.

glory. The Theatre's interior was restored to its 1923 grandeur in several phases and Patchogue Theatre for the Performing Arts (PTPA) opened for business with its first performance in December of 1998.

Although the Village of Patchogue owns the historic Patchogue Theatre venue, the staff and volunteers of Patchogue Theatre for the Performing Arts manage the Theatre, under the leadership of a volunteer board of directors, through a community-based 501(c)(3) nonprofit arts organization known as the Patchogue Village Center for the Performing Arts. PTPA leases the building from The Village of Patchogue and covers all of the costs of operating the building, including programming, without any taxpayer subsidies.

Since 2004, Patchogue Theatre has maintained a state-of-the-art world-class sound system and Broadway caliber lighting & rigging. New, more spacious seating with better sightlines was installed by McHugh Institutional Furnishings in the winter of 2016. The new seats made their debut that spring at Patchogue Theatre's first show back on April 2 featuring The Chapin Family.

There are now 854 orchestra seats and 252 balcony seats; bringing Patchogue Theatre's total number of seats to 1,106, including the handicap-accessible seating throughout the Orchestra level. This allows Patchogue Theatre for the Performing Arts to remain the Largest Theatre in Suffolk County.



GRILLE HOUSE & SPORTS BAR



patchogue's premier sports bar

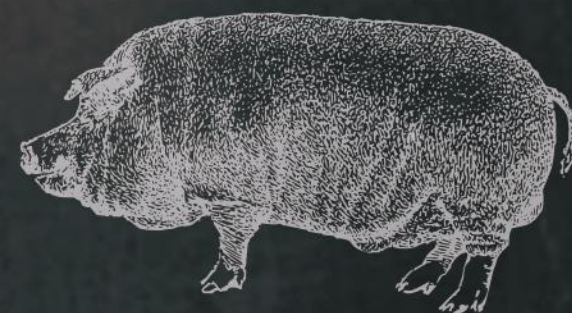
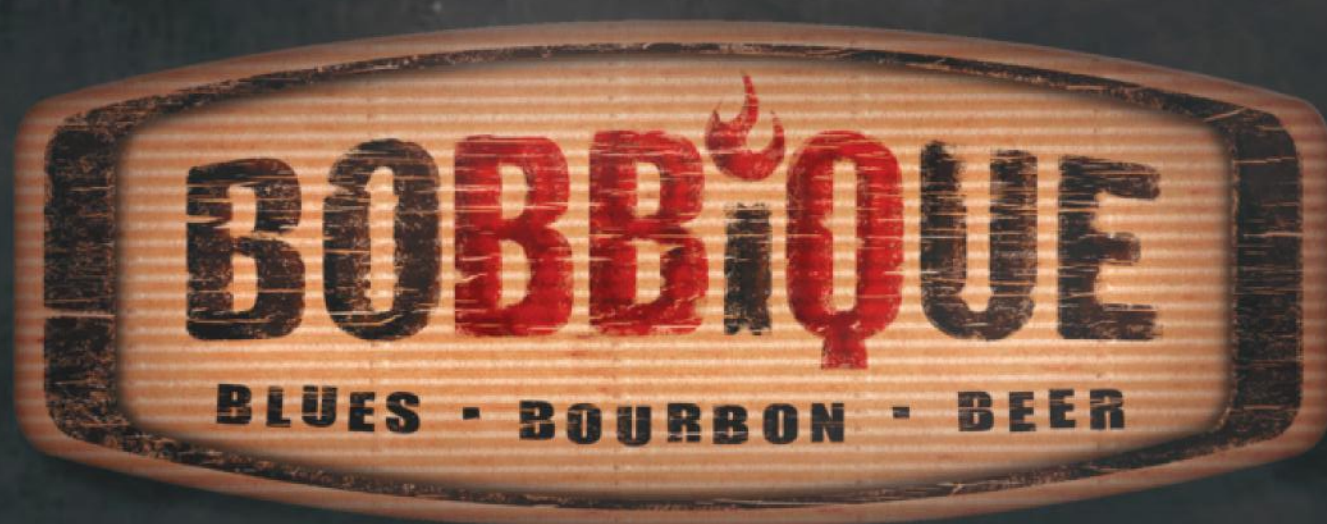


menus, specials & booking inquiries
available via aroogas-ny.com



CELEBRATING 19 YEARS IN PATCHOGUE

**EAT THE MEATS,
DRINK CRAFT BEER,
& ENJOY LIVE MUSIC AT**



**ORDER ONLINE AT BOBBIQUE.COM
OR CALL 631.447.7744**





North Shore Senior Living **DONE BRIGHT**

Check all your senior living boxes with a one-and-done move to Brightview.

- ✓ ON-SITE CARE CONTINUUM
- ✓ VIBRANT SOCIAL & CULTURAL SCENES
- ✓ RESORT-STYLE AMENITIES & SERVICES
- ✓ MONTHLY RENTALS – *NO HEFTY BUY-IN FEE*
- ✓ WIDE SELECTION OF UPSCALE APARTMENT HOMES

It's your move!
Schedule your visit today!



BRIGHTVIEW
SENIOR LIVING
PORT JEFFERSON

BrightviewPortJefferson.com | 631.802.5021
Independent Living | Assisted Living | Dementia Care



**LONG ISLAND'S
FIRST CHOICE FOR
ALL PROPERTY
DAMAGE RESTORATION**

INSURANCE CLAIM SPECIALISTS

HireBulovas.com
631-358-5200

IF YOU DRINK,
DON'T DRIVE.



DECIDE TO
RIDE

Anheuser-Busch

 madd | 

Always Enjoy Responsibly. © 2021 Stella Artois® Beer, Brewed in the U.S.A., Stella Artois, St. Louis, MO. 2021 Import Brands Alliance®. Importers of Stella Artois® Beer, St. Louis, MO.



When you need technology
as smart as your ideas and a
team working as hard as you.

WE'VE GOT YOUR BANKSM

**Find out why the new Dime is New York's
premier bank for business.**

From Montauk to Manhattan, more businesses turn to Dime for their banking than any other community bank. Dime has the digital solutions to manage your money in seconds, and a team that puts your business first. [Learn more at dime.com.](https://dime.com)



“Break a Leg” may be a good luck wish in theater, but in real life, staying safe at home is no joke!

We can help with:

- Meal Prep
- Cooking
- Errands
- Laundry
- Bathroom Tasks
- Housekeeping
- Grooming
- and *more!*



718.657.2966 | elara.com

Elara Caring

Personal Care





GiGi's
Playhouse™

Down Syndrome Achievement Centers
educate. inspire. believe.

Long Island, NY



Support GiGi's Playhouse Long Island by becoming a 3 2 1 Champion Donor!

(\$21 a month for 12 months or 1 time payment of \$252)



At GiGi's Playhouse Long Island families are never alone. From a prenatal diagnosis to career skills, we make a lifetime commitment to remain by their side. Families are empowered with all the tools their child needs to succeed!

www.gigisplayhouse.org/longisland

 @gigisplayhouselongisland

 GiGi's Playhouse Long Island

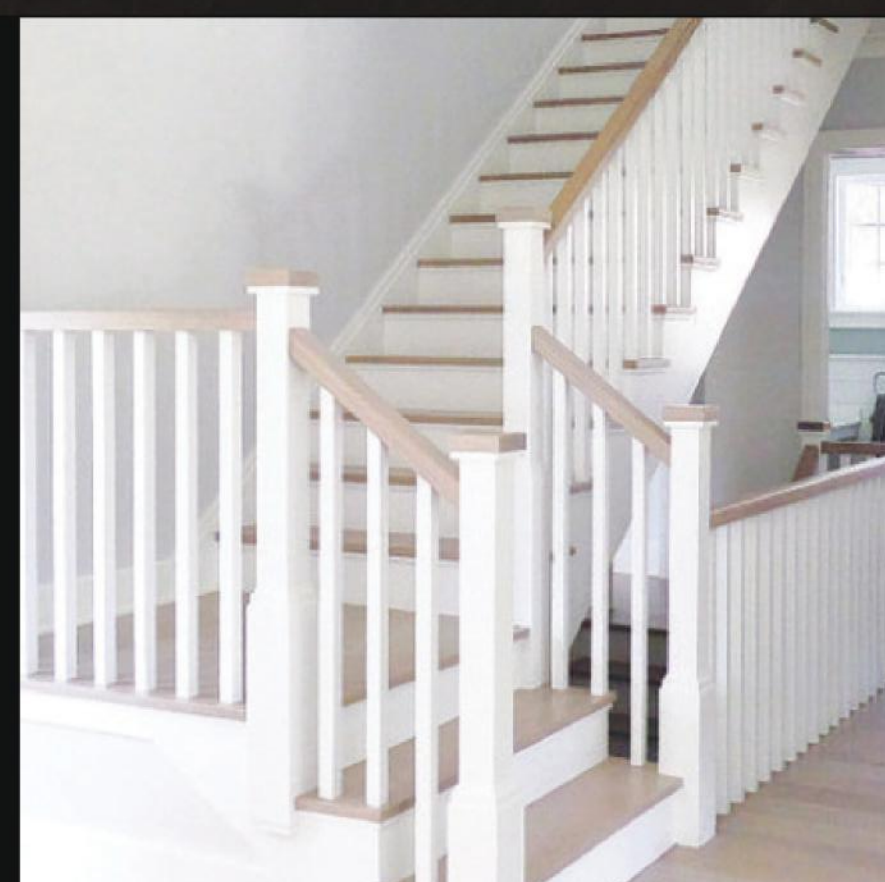
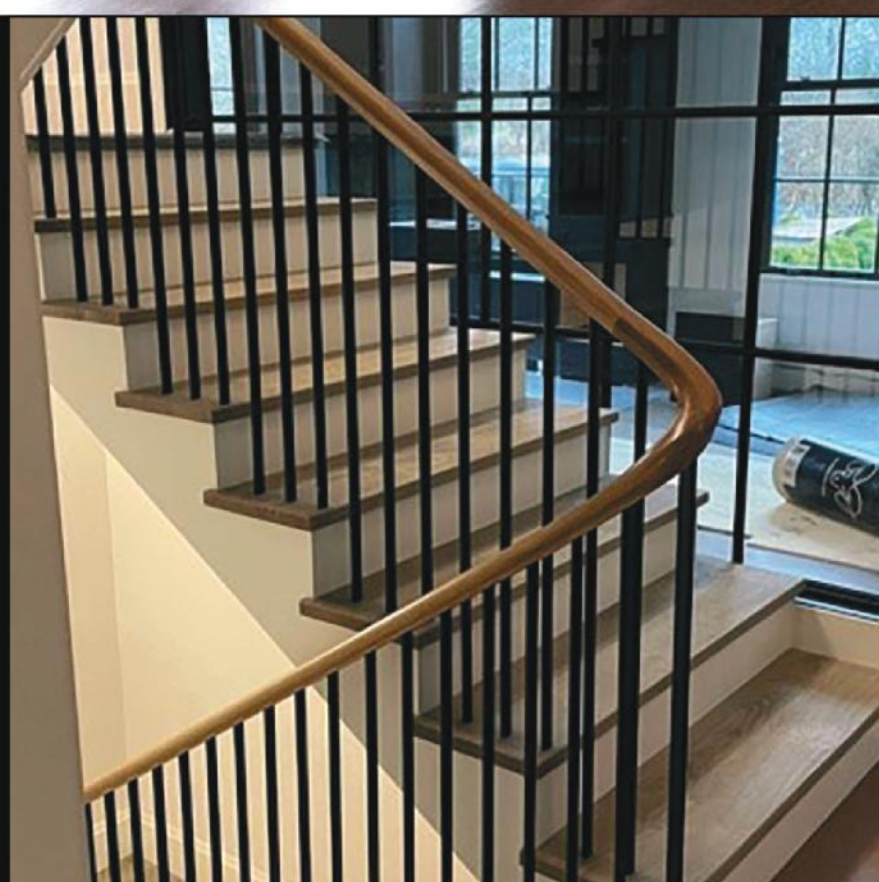




PROUDLY SERVING LONG ISLANDERS FOR 48 YEARS

H.B. MILLWORK INC.

Stairs
Loft Ladders
Balusters
Countertops
Circulars
Corbels
Louvers
Doors
Posts
Mantels
Millwork
Moulding
Reducers
Windows
Hand Rails
Finial Caps

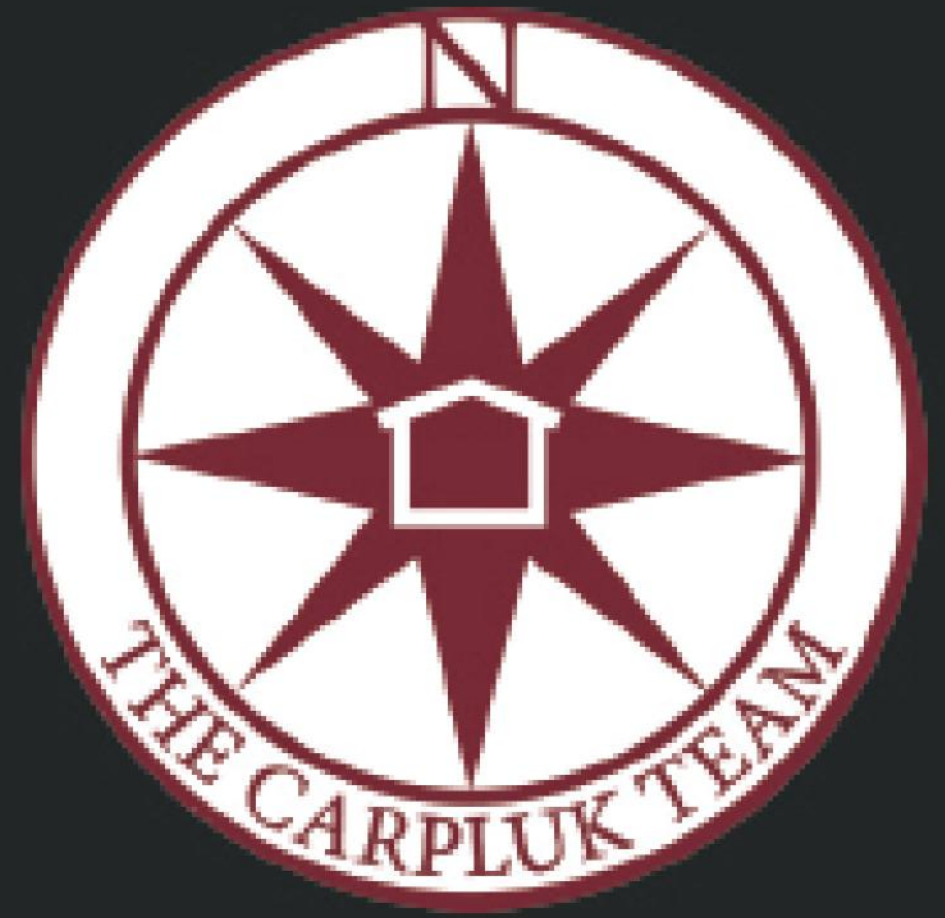


494 Long Island Ave.
Medford, NY • 631.289.0100
www.hbmillwork.com

Suffolk License #HI-63172 • Nassau License #162824

Welcome to Patchogue

The Carpluk Team at KW Realty Elite has been serving the South Shore of Long Island since 1991. Call us for all of your real estate needs, and see the difference The Right Realtor Makes!



Janis Thomson *The Right Realtor*

Makes the Difference

Licensed Real Estate Salesperson

96 E. Main St, East Islip 11730
695 Broadway, Massapequa 11758

Phone: 631.902.1044

JanisThomsonRealtor.com



kw ELITE
KELLERWILLIAMS. REALTY



THIS SPACE FOR RENT

WITH PLACEMENT IN OUR ONLINE DIGITAL 2025-2026 SEASON PROGRAM, YOUR AD WILL ALSO APPEAR ON THIS SCREEN FOR A YEAR!



ONLY
\$400
for a page in our
Online Digital
Playbill and Lobby
Display for a
FULL YEAR!

SCAN FOR DETAILS



**TO RESERVE YOUR SPOT
CONTACT ANNEMARIE
ANNE@PATCHOGUETHEATRE.ORG
631-207-1300, EXT. 111**

NORTHWELL'S VARICOSE VEIN EXPERTS ARE NEARBY

Call or visit us online
for a consultation.

(877) 834-VEIN (8346)

Vein.northwell.edu



NorthwellSM
Vein Care



JI ROOFING & EXTERIORS CORP

— GO WITH THE PROS —

631-569-9084



RUTA

OAXACA

authentic mexican cuisine



BRUNCH
WEEKDAYS 12-4
WEEKENDS 11-4



TACO TUESDAY
ALL DAY
DINE-IN ONLY

HAPPY HOUR SPECIALS

MONDAY - FRIDAY - 12PM TO 7PM

- MICHELADAS \$7 • BOTTLES \$4
- DRAFT \$6 • MARGARITAS/SANGRIA \$9

BRUNCH

SAT / SUN - 11 AM TO 4PM

BOTTOMLESS DRINKS FOR 90 MIN
FOR \$35 WITH PURCHASE OF ENTREE

- MICHELADA • FLAVORED MIMOSAS
- BELINI • RED/WHITE SANGRIA
- BLOODY MARIA

PLUS 2 FOR 1 MARGARITAS/SANGRIA

30 E. MAIN STREET

PATCHOGUE, NY

(631) 569-2233

SCAN HERE OR

VISIT OR WEBSITE

RUTAOAXACAMEX.COM



REESE'S 1900



REESE'S 1900 SINCE 1971



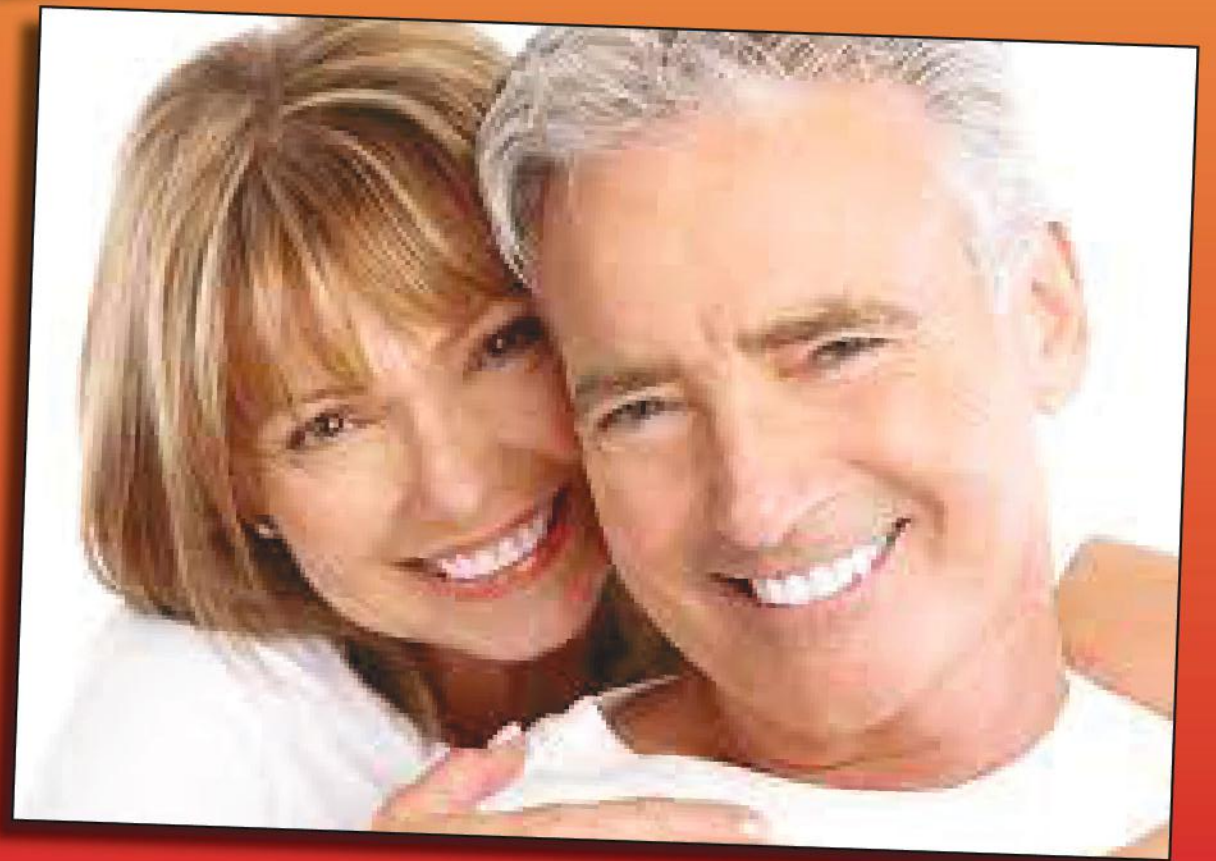
A Traditional "Old Style" Pub

Relax Before or After the Show - Full Bar & Menu

Closed Sundays

**70 North Ocean Avenue • Patchogue, NY
(631) 289-1900 • www.reeses1900pub.com**

Proudly Serving Patchogue For 25 Years!



157 N Ocean Ave • Suite 2 • Patchogue
(631) 475-6444 / (631) 869-3003
sunsetdentalcare.net

EST ★ 2011

TAP ROOM

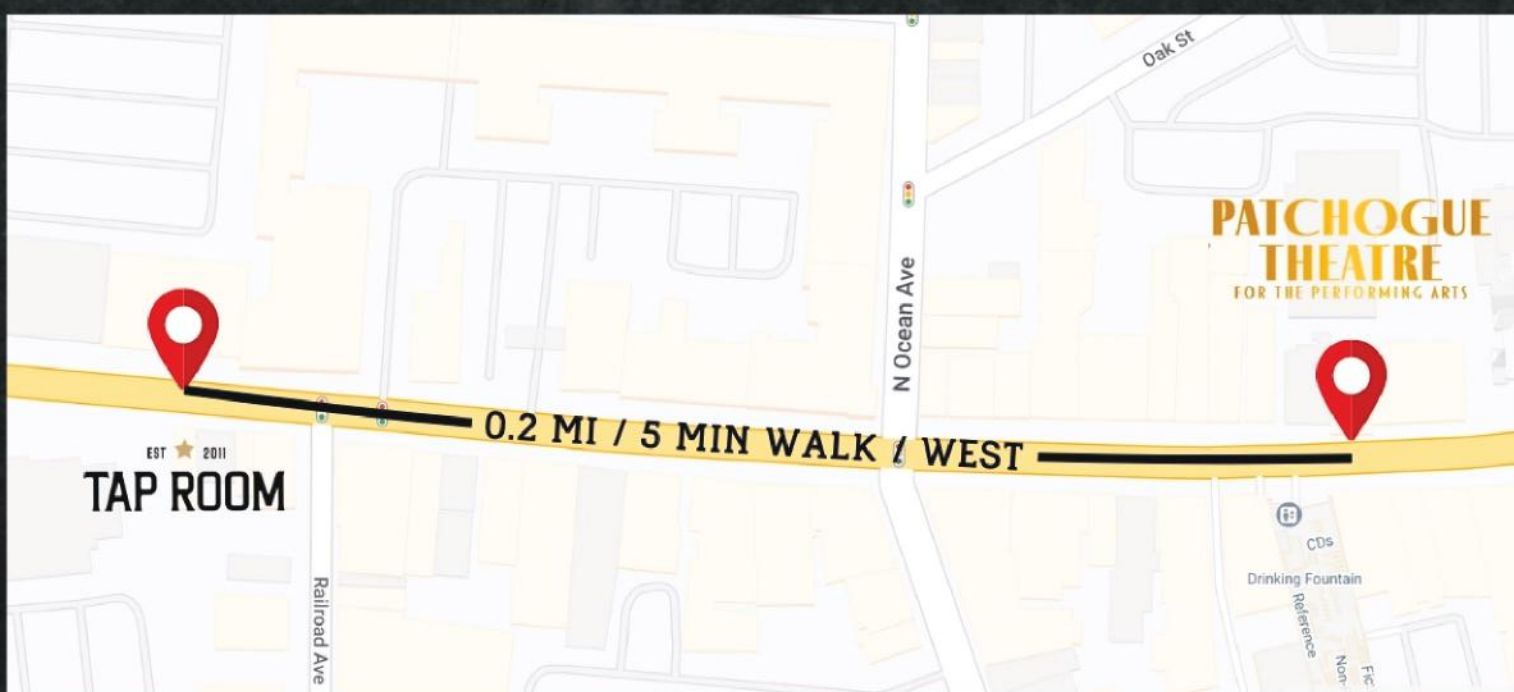
YOUR LOCAL CASUAL GATHERING PLACE

FOR REAL FOOD AND CRAFT BEVERAGES

BRUNCH • LUNCH • DINNER • HAPPY HOUR • SPORTS & MORE!



Present your ticket and enjoy
10% OFF YOUR CHECK*



SCAN TO SEE
OUR MENU



114 W. Main St. Patchogue NY, 11772
(631) 569-5577 • TapRoomOfNY.com



*Offer valid on the same day as the show ticket date only, with a maximum discount of \$100 per check.
Cannot be combined with any other offers. Valid for dine-in only (not for catered events).
Subject to management discretion.

VILLAGE



IDIOT PUB

VILLAGE



IDIOT PUB

KIDS EAT FREE

MONDAY - THURSDAY • 3PM - 7PM
WITH PURCHASE OF AN ADULT ENTRÉE

**WEEKEND
BREAKFAST**

SATURDAY 9AM - 12PM &
SUNDAY 9AM - 1PM

📍 8 E Main St, Patchogue, NY 11772

☎ (631) 289 - 8471

www.villageidiotpubs.com

@VillageIdiotPub

f VillageIdiotPubLI

PROUDLY SUPPORTING PATCHOGUE THEATRE

ENJOY 10% OFF TOTAL CHECK
WITH PRESENTATION OF THEATRE TICKETS

(CAN NOT BE COMBINED, MUST BE DAY OF SHOW)



VILLAGEIDIOTPUBS.COM



YOUR FITNESS JOURNEY STARTS HERE



Get Motivated Now!

Whether you are just beginning your health and wellness journey or looking to maintain an active lifestyle, the Y is here to help you reach your goals. At the YMCA, we offer state-of-the-art facilities with programs to get you motivated and keep you on track. Your membership includes:

- Fitness Centers
- Group Fitness Classes
- Indoor Pools*
- Indoor Track*
- Programs & Classes for kids and adults
- FREE Child Watch while you work out*
*at select locations

YMCA360 Livestream and On-Demand Programs

**TRY THE Y
FOR FREE!**

SCAN NOW!



Patchogue Family YMCA
255 W Main Street
Patchogue, NY 11772
(631) 891-1800



When a cold or flu visits you, visit us next.

We're open 7 days a week with extended hours to fit your schedule. Walk-ins welcome.

Our Services

- Urgent Care
- Family Care
- X-ray
- Labs & Testing
- Occupational Medicine
- Seasonal Allergies
- and more

AFC PATCHOGUE

24 Railroad Avenue
Patchogue, NY 11772
631.615.7439
afcurgentcare.com/patchogue

NO APPOINTMENT NEEDED

M-F: 8am to 8pm, S-S: 8am to 5pm



FIVE TOWNS COLLEGE

LONG ISLAND'S CREATIVE COLLEGE

Real Stages. Real Shows. Real Experience.

At Five Towns College, our Business, Mass Comm & Music students run the show—literally.

Learn audio, sound & stagecraft

Alive After Five

At the Five Towns College Stage



CLICK HERE TO LEARN MORE

FTC.EDU | #FiveTownsCollege

G GFI ELECTRIC

Call that fella Drella!

631 - 304 - 5540

Fully Licensed and Insured

- **200 amp Service Upgrades**
- **Panel Change Outs**
- **Exterior Lighting**
- **Generac Generators**
- **Dimmer & Outlet Installation**
- **Pool Wiring**
- **Electric Vehicle Chargers**
- **Kitchen & Bathroom Lighting**

WWW.GFIELECTRICLLC.COM

GREAT SOUTH BAY MUSIC FESTIVAL

July 23 - 26, 2026
Shorefront Park · Patchogue, NY



THURSDAY, 7/23

THE USED
BAYSIDE
CARTEL · KOYO
IMPOSTERS · DEADLANDS
NO FLY LIST · GAMBLERS

FRIDAY, 7/24

SUBLIME
COMMON KINGS
THE RIES BROTHERS
PROJECT VIBE · OOGEE WAWA
MYSTIC BOWIES TALKING DREADS
NY SKA JAZZ ENSEMBLE · BUNKTOWN FALLS
REGGAELAR PEOPLE · IRIESPECT
ROOTS FOUNDATION · HALFBREEDS

SATURDAY, 7/25

GOV'T MULE
BRUCE HORNSBY
& THE NOISEMAKERS
SIERRA HULL
LaMP
Feat. Russ Lawton, Scott Metzger & Ray Paczkowski
KERRY KEARNEY'S CAJUN REVUE
ALLMOST BROTHERS · ERNIE & THE BAND
QUINN SULLIVAN · CIRCUS MIND
SOUNDWELL · RIPPLE ALLSTARS
FIRETOG & CO. · ROBINSON TREACHER
ORCHYD · SCHOOL OF ROCK - FARMINGDALE

SUNDAY, 7/26

MY MORNING JACKET
LITTLE FEAT
BOB WEIR CELEBRATION
Andy Falco, Infamous Stringdusters · Rob Eaton, DSO · Alwyn Robinson, Leftover Salmon · Eric Finland, Erik Krasno · Pat Falco, Cosmic Orchestra · Leslie Mendelson
TAZ
MILES TO DAYTON
KELLI BAKER BAND *Feat. Noe Socha*
OM-EN · FUNKIN' A · ANDREW WEISS
OWLS BY DAY · SPACE TURTLES
ALBERT LIU & THE WILD HEARTS

Artisans & Craftspeople · Live Art · Beer, Wine & Spirits · Food Court · KidZone
Shorefront Park on the Magnificent Great South Bay, Patchogue

GreatSouthBayMusicFestival.com



a faith-weinberger production



Village Walk brings the benefits of a supportive senior living community to the heart of the Village of Patchogue.

With an eye to freedom, security and dignity, this community is purposefully designed to meet the specific needs of residents who benefit from the respectful support of daily assistance or specialized therapeutic environments designed to care for those with Alzheimer's.

Amenities

- ◆ 24-Hour Nursing Care (Enhanced License)
- ◆ In-House Physicians & Therapies
- ◆ Multiple Dining Venues with Prepared Meals
- ◆ Bistro & Pub with Adjoining Patio
- ◆ Theater for Movies & Entertainment
- ◆ Creative Arts Studio
- ◆ In-House Salon
- ◆ Housekeeping, Maintenance & Security
- ◆ Complimentary Local Transportation



Schedule your visit today!

(631) 972-4966 • vulpisnicole@villagewalkseniorliving.com

FOLLOW US ON FACEBOOK & INSTAGRAM

