

3D

DECEMBER
2023

Rhinozine

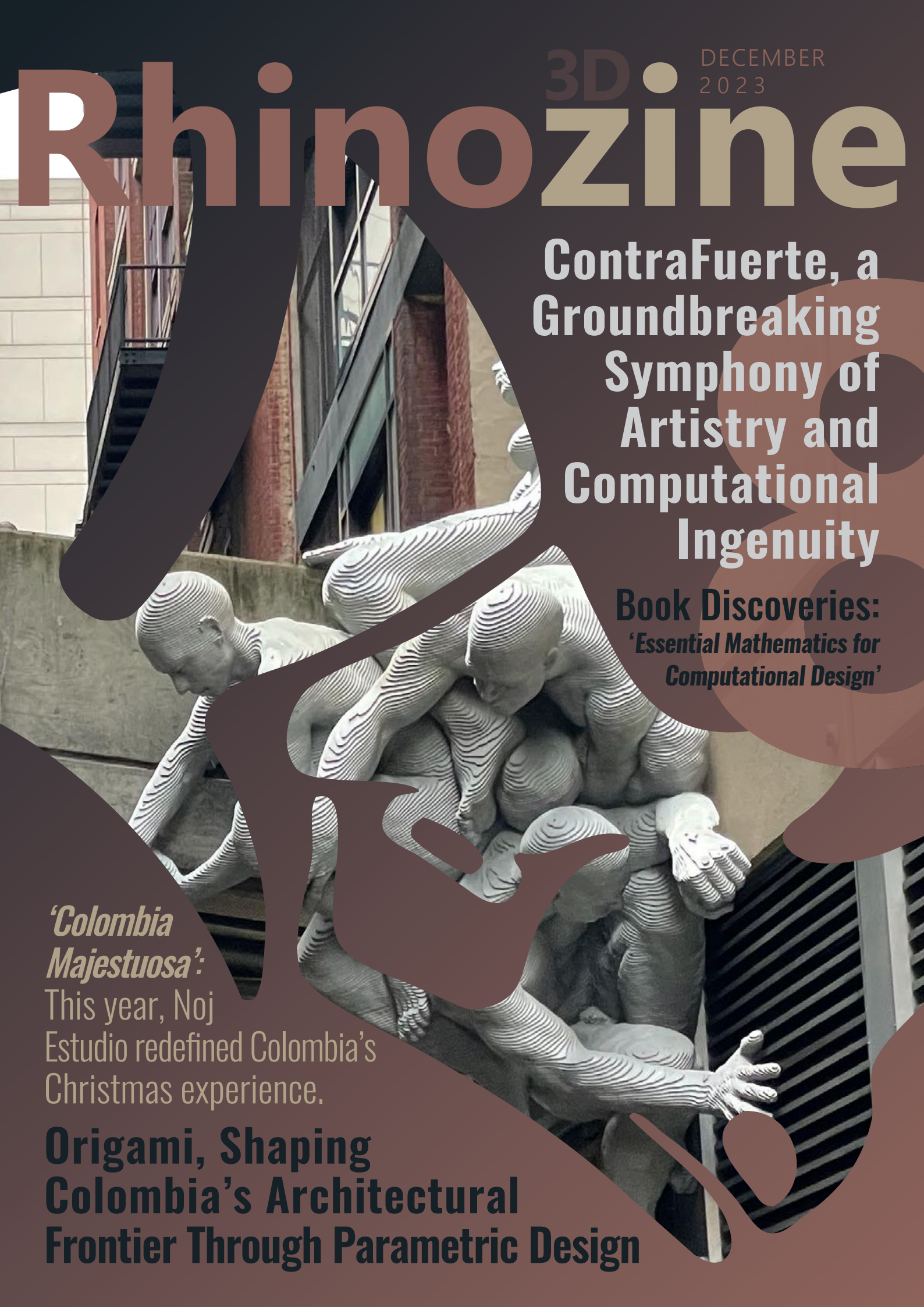
**ContraFuerte, a
Groundbreaking
Symphony of
Artistry and
Computational
Ingenuity**

**Book Discoveries:
*'Essential Mathematics for
Computational Design'***

***'Colombia
Majestuosa':***

This year, Noj
Estudio redefined Colombia's
Christmas experience.

**Origami, Shaping
Colombia's Architectural
Frontier Through Parametric Design**



McNeel HQ

Headquarters, North America
& Pacific

146 N Canal St, Suite 320
Seattle, WA 98103 USA

McNeel South East US & Latinoamérica

Southeastern United States
& Latin America

1538 NW 89th Court
Miami, FL 33172 USA

McNeel Europe

Europe, Middle East
& Africa

Roger de Flor, 32-34, bajos
Barcelona, 08018 España

McNeel Asia

146 N Canal St, Suite 320
Seattle, WA 98103 USA

support@mcneel.com





Get Rhino 8

**Rhino license keys work for both Mac and Windows!
All licenses are permanent and do not expire.**

Select your region



**All products are shipped electronically. Prices include support and service releases for the current version. There are no maintenance fees.*

Image by Kyle Houchens

6. What's new in Rhino 8

Explore new features in Rhino 8, including ShrinkWrap, faster rendering, and much more.



7. food4Rhino

Learn about ShapeMap and Ladybug Tools.

10. Origami, Shaping Colombia's Architectural Frontier Through Parametric Design

Discover this architectural pioneer through a selection of their innovative projects.



12. R8 Tips & Tricks

Unlock Rhino 8's full potential with essential tips and tricks tailored for the latest version of the software.

16. Learning: CorsiRhino

This Italian institution offers unique training programs for businesses and professionals.

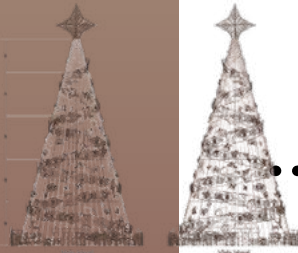


14. ContraFuerte, a Groundbreaking Symphony of Artistry and Computational Ingenuity

Discover the remarkable collaboration between sculptor Miguel Horn and LANDAU in an impactful outdoor installation.

17. Tips, Tricks, & resources about Grasshopper

Dive into this section for short video tutorials on Grasshopper.

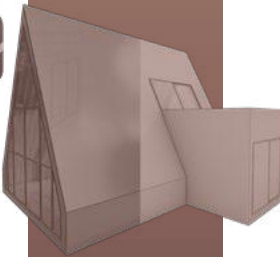


19. Digital Fabricators Project: 'Colombia Majestuosa'

This year, Noj Estudio redefined the Christmas experience with 3200 figures capturing Colombia's cultural and natural richness.

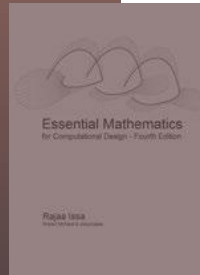
21. Rhino3D Education

Explore 'Intro to Rhino 8' to dive into three-dimensional design using the latest version.



23. Book Discoveries

Discover 'Essential Mathematics for Computational Design' a vital resource for professionals in 3D modeling.



22. Events

Get ready for these upcoming design events.

24. Gallery

Explore the Rhinoceros Forums Gallery, where captivating images bring creativity and innovation to life.



25.

Career Corner

Explore Job Opportunities with Rhino or Grasshopper.



Rhino^{3D}zine

**Share your knowledge.
Expand your network.
Connect with fellow enthusiasts.**

Ready to be featured in Rhinozine? Don't hesitate – click [HERE](#) and send us your application today!

If you're eager to showcase your latest **project**, share a groundbreaking **plugin**, promote **courses** and **events**, recommend must-read **books**, or offer exciting **job opportunities**, we want to hear from you. Your expertise and insights could inspire our diverse readership!

CONTRIBUTORS & ACKNOWLEDGMENTS

Editor

Carola Trozzo

Review Team

Andrés González, Jackie Nasser, Ryan Brown, Dulce Chavez, Wendy Hemmelman, Jody Mills, and Sandy McNeel.

Designer

Carola Trozzo

Production Manager

Paula González

Marketing Coordinator

Lucia Miguel

Other Contributors

Chris Landau, Juan Felipe Gonzalez Garcia, Juliana Andrea Valencia Alvarez, Riccardo Gatti, Rajaa Issa, Jessen Chen, Bob McNeel, Scott Davidson, Brian Gillespie, Julian Oquendo, and Niloofar Zaker.

Acknowledgments

- **ContraFuerte - (p. 14-15)**

Miguel Horn - Artist / Chris Landau at LANDAU Design + Technology - Tool Development / Parkway Corporation - Client / Wurzak Hotel Group - Client / PHDC - Client

- **ORIGAMI - (p. 10-11)**

Juan Felipe Gonzalez Garcia - Director / DecoPlastic

- Allied Company for the Mariano Rivera Project / Camacol Antioquia

- **'Colombia Majestuosa' - (p. 19)**

Lina Arroyave, Yeraldín Gil, Sebastián Serna, Sara López, Thomas Hincapié, Mateo Ortiz, Julián Oquendo - Noj Estudio / Braulio Espinosa, Erica Sierra, Beatriz Pabón - Municipality Administration of Envigado, Antioquia / Jimmy Collazos, Carolina Márquez, Jairo Tamayo - Enviaseo

- **Essential Mathematics for Computational Design (p. 23)**

Rajaa Issa - Author

Images

Kyle Houchens (p. 2-3); NASA (p. 5); rhino3d.com (p. 6 & 23) food4Rhino (p. 7-9); Jessen Chen (p. 8); Juan Felipe Gonzalez Garcia, Juliana Andrea Valencia Alvarez (p. 10-11); Chris Landau, Santiago Galeas (p. 14-15); Riccardo Gatti (p. 16); El Colombiano, Julian Oquendo (p. 19); Meetup, Controlmad, Coursehorse, CAD Jewellery Skills (p. 22); Laurent Delrieu, Richard Zazworka (encephalon), Holo, chips1r, Gijs de Zwart (p. 24); NASA (p. 26-27).

In the Cover

ContraFuerte by Miguel Horn and Chris Landau

Contact Us

carola@mcneel.com

Corrections -



food4Rhino

Apps for Rhino and Grasshopper

The food4Rhino web site has many apps for Rhino and Grasshopper.

It's a mix of plugins for many, many applications.

Popular apps you can find here:



LunchBox



Ladybug Tools



Kangaroo



Pufferfish



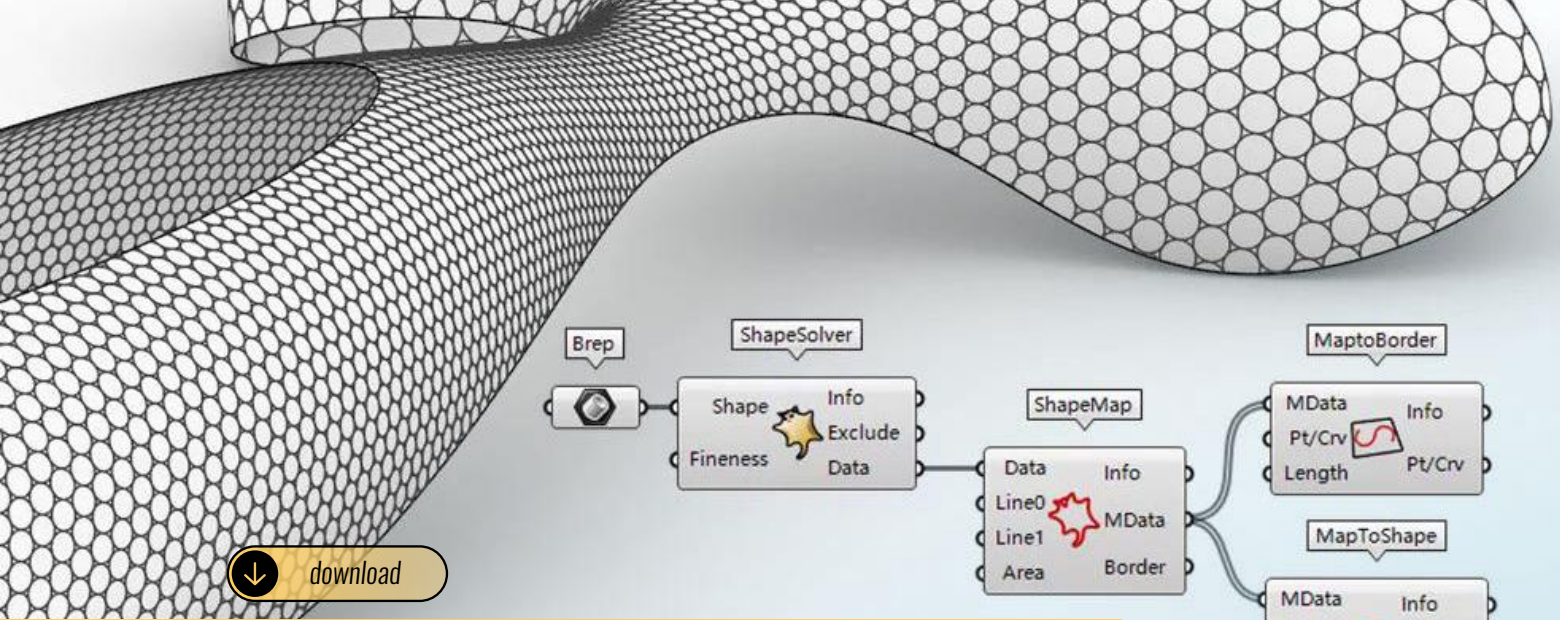
PanelingTools



GhPython

Check it out!

www.food4rhino.com



ShapeMap

(by Shaper3D)



Category: General, Panels and Streamlining

ShapeMap helps you map curves and points on a Brep or SubD with minimal distortion.

ShapeMap contains four components that are quite easy to use. Use with other components of Grasshopper to interactively adjust the texture on a complex fluid form.

The process of using ShapeMap is very simple, just like using the Squish and SquishBake

commands in Rhino. First unfold the 3D object you want to design the texture on, then design the texture on the flattened plane, and then unfold the designed texture back to the original 3D object.

ShapeMap has been widely used to texture automobiles,

buildings, shoes, and other industrial products. It is very popular among designers and architects. Now you can find it on the Food4Rhino website. Detailed instructions are also now available to help you better utilize it.

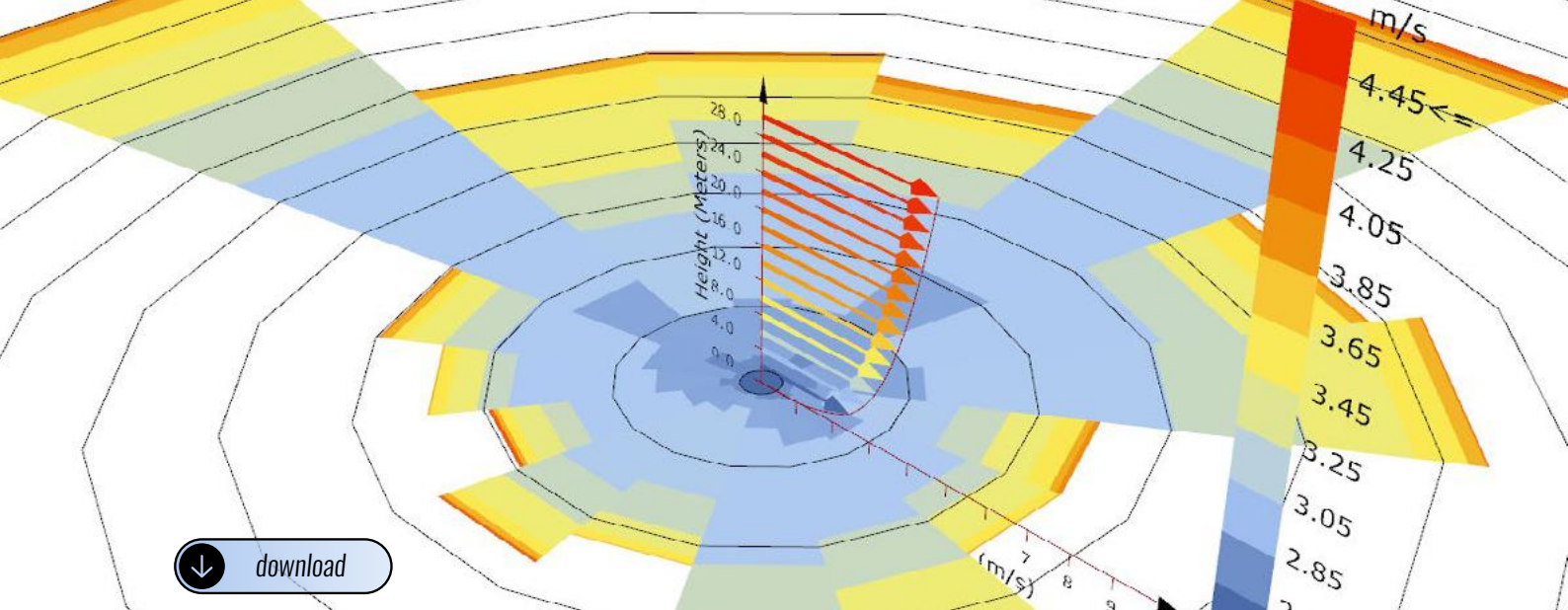
Discover techniques in texture mapping on complex surfaces using ShapeMap with these tutorials:

1/2



2/2





Ladybug Tools



(by Ladybug Tools)

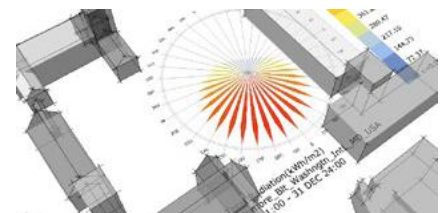
Category: Analysis and Simulation, Architecture, Environmental Design, Mechanical Design, Urban Planning and City Modeling

Ladybug Tools, a versatile suite of free computer applications for environmental design, seamlessly integrates with 3D Computer-Aided Design (CAD) interfaces through four key components.

Ladybug - At the core, Ladybug conducts detailed climate data analysis, producing tailored visualizations for environmentally-informed design. Its integration with visual programming environments ensures designers receive instant feedback, enhancing customization during early-stage decision-making.

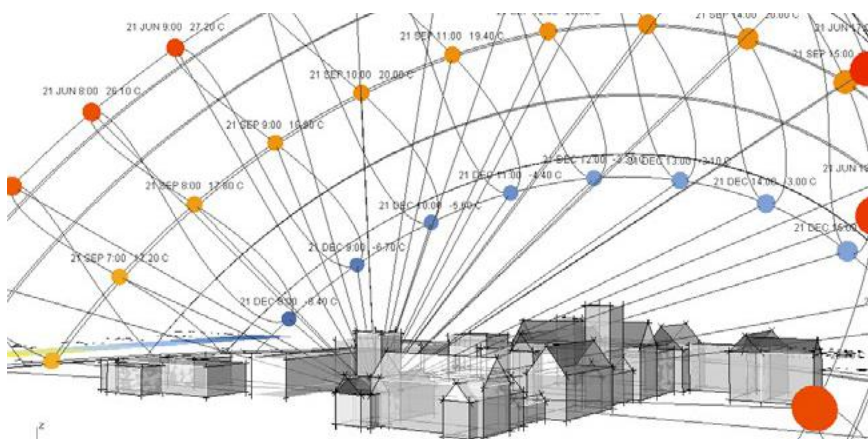
Honeybee - Focused on mid-to-later design stages, Honeybee excels in creating, running, and visualizing daylight simulations using Radiance. It also allows precise energy modeling using OpenStudio and EnergyPlus, supporting detailed daylighting and thermodynamic modeling.

Butterfly - As a Grasshopper/Dynamo plugin, Butterfly specializes in advanced computational fluid dynamics (CFD) simulations using OpenFOAM. Efficiently modeling outdoor



wind patterns and indoor dynamics, it is a valuable tool for designers seeking to understand airflow intricacies.

Dragonfly - Extending Ladybug Tools' capabilities, Dragonfly enables the creation of district-scale energy models, seamlessly translating them into detailed 3D Honeybee models or running directly in various engines. This integration provides a comprehensive solution for district-scale environmental simulations, emphasizing Ladybug Tools' role in facilitating sustainable and informed design practices.



Origami, Shaping Colombia's Architectural Frontier Through Parametric Design



Origami, a division of the **Demetalicos** group, stands as a trailblazer in Colombia's architectural realm, with its base in Medellín and a remarkable 43 years of experience. Utilizing parametric and algorithmic design, the company has redefined architectural possibilities and was recently awarded second place in Innovation at the Construction Industry by **Camacol Antioquia**. With a global reach spanning the United States, Dominican Republic, Panama, Peru, and Venezuela, Origami is transforming the industry's perception of design and construction.

Origami's reach and creative prowess unfold through these showcased projects, each revealing the company's impact on the architectural landscape.

Torre Victory – Panama

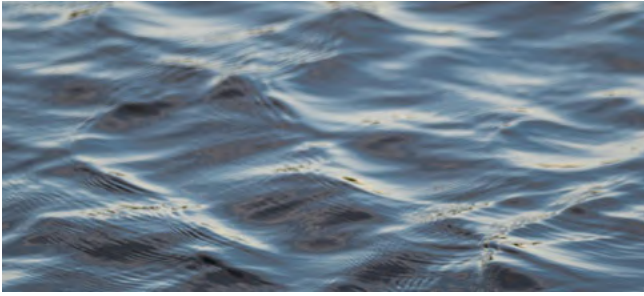
The Torre Victory project exemplifies Origami's prowess in merging biomimicry with cutting-edge design. Comprising 875 pieces and resembling a



mushroom's architecture, this structure posed many challenges in geometry, assembly, and volume generation. Leveraging tools like **Rhino** and **Grasshopper**, Origami executed precise digital designs, ensuring an exact real-world replication. The meticulous coordination with production processes ensured a flawless execution.

Farmatodo - Colombia

Farmatodo presented a unique challenge for Origami. Adapting standardized modules to irregular spaces required an intricate balance. The irregular areas, inspired by sea waves, necessitated



adjustments in the parametrized initial module, allowing for efficient design and production. This adaptation reduced waste by 25%, enhancing both cost-effectiveness and production efficiency. Employing Grasshopper alongside plugins such as **LunchBox** and **Instance**



Manager facilitated the complex welding processes and the color categorization, resulting in an aesthetically pleasing yet efficient outcome.

Estadio Mariano Rivera - Panama

The Estadio Mariano Rivera project posed distinctive challenges in managing a diverse range of pieces while optimizing material consumption. To achieve a dynamic, engaging facade through geometric optimization, extensive considerations had to be made regarding material depth and usage. Plugins such as **TreeFrog** and **OpenNest** played crucial

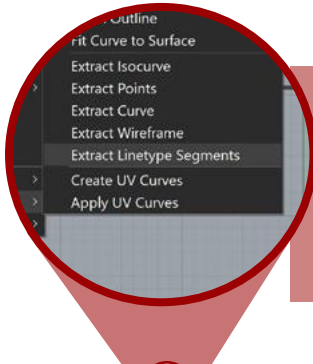
roles in managing data interpretation, optimizing material usage, and cutting plans in the production environment.

In their diverse projects, Origami has exemplified a commitment to innovation—leveraging the power of parametric design tools and technological acumen. From the advanced adaptations in Farmatodo to the intricate material optimization in Estadio Mariano Rivera, each project reflects Origami's dedication to efficient, aesthetically pleasing solutions. Their strategic use of plugins and pioneering approaches sets a standard for architectural excellence, solidifying their position as leaders in the industry. They continue to push the boundaries of what's achievable in architectural design.

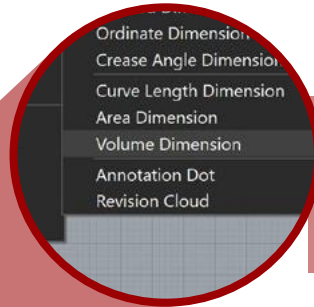


Tips & Tricks

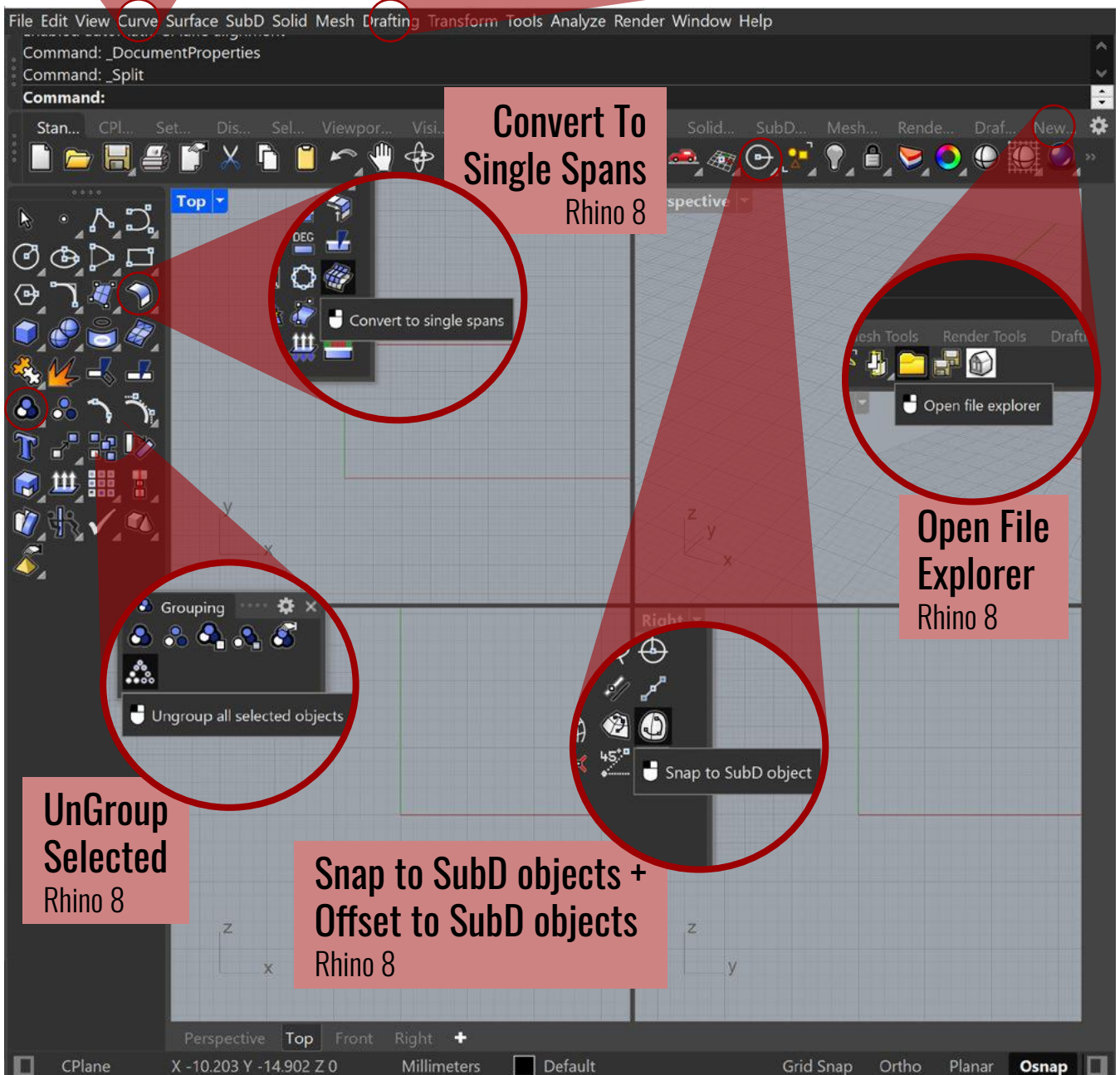
Elevate Your Rhino Game: Think you know it all? Click now and unravel a collection of game-changing tips & tricks!



**Extract
Linetype
Segments**
Rhino 8



**Volume
Dimension**
Rhino 8



**Convert To
Single Spans**
Rhino 8

**Open File
Explorer**
Rhino 8

**UnGroup
Selected**
Rhino 8

**Snap to SubD objects +
Offset to SubD objects**
Rhino 8



Rhino 8

Rhino 8 brings new modeling tools like ShrinkWrap, a huge speed boost for Mac users, SubD Creases, PushPull workflows, better drafting tools, a more customizable User Interface, a faster Render engine, new Grasshopper data types, and much more.

Get a New Licence

STUDENT

One time purchase

Perpetual license
Support included
Service releases included
Use for commercial work

[Buy Now](#)

FREE

EVALUATION

No credit card required

90 day trial license
Support included
All features included
Use for commercial work

[Try It](#)

COMMERCIAL

One time purchase

Perpetual license
Support included
Service releases included
Floating license

[Buy Now](#)

Or Upgrade (from any version)

STUDENT

Upgrade from any version

Perpetual license
Support included
Service releases included
Use for commercial work
Prior version license key needed

[Buy Now](#)

FREE

EVALUATION

No credit card required

90 day trial license
Support included
All features included
Use for commercial work

[Try It](#)

33% OFF

COMMERCIAL

Upgrade from any version

Perpetual license
Support included
Service releases included
Floating license
Prior version license key needed

[Buy Now](#)

Limited Time offer

ContraFuerte, a Groundbreaking Symphony of Artistry and Computational Ingenuity



Nestled within the vibrant cityscape of Philadelphia lies an extraordinary testament to collaborative prowess and digital craftsmanship—**ContraFuerte**. This bold outdoor installation, conceived by the visionary sculptor **Miguel Horn**, represents a fusion of tradition and technological advancement. It is a symphony orchestrated through a profound collaboration with Chris Landau's powerhouse, **LANDAU**.

The celebrated unveiling of ContraFuerte in Philadelphia marked the realization of an extensive, meticulous process—a journey that explored the intersection of artistry and cutting-edge design techniques. Miguel Horn's visionary creation, an awe-inspiring ensemble of male and female figures defying gravity as they support a bridge, came to life through the intricate interplay of traditional sculpting methods and Landau's innovative digital expertise.

Landau's role in this artistic saga goes beyond mere collaboration; it's a narrative of transformative artisanship. His background in landscape architecture and design technology provided fertile ground for the marriage of art and computational design. The adaptation of digital tools like Rhino, Grasshopper, and Python became the cornerstone of this groundbreaking venture, enabling Horn to delve into digital sculpting at a scale previously unexplored in his artistic repertoire.

This pivotal partnership between Horn and Landau unfolded against a backdrop of immense technical intricacy. The intricate layering of the

sculpture, meticulously composed of over 5,000 aluminum pieces, demanded a precision that surpassed traditional artistic methods. Landau's expertise in Grasshopper and custom scripted tools brought forth a seamless integration of hundreds of layers, meticulously ensuring a flawless, cohesive assembly.

The ContraFuerte project isn't just a testament to collective action; it's a pinnacle of precision demanded—down to an eighth-inch overlap in hundreds of layers. This precision was made achievable through the strategic use of computational design. Landau's adeptness in computational algorithms not only ensured an accurate representation of Horn's vision but also optimized the cutting process for efficiency.



Beyond ContraFuerte, LANDAU Design +Technology is a pioneering force, reshaping the landscape of art and design through an array of services.

LANDAU specializes in computational design, offering a suite of services that includes innovative modeling techniques, dynamic models leveraging

computational design, and simulations for landscapes, furnishings, prostheses, and much more. Their proficiency also encompasses topographic modeling, analysis, and animation, revealing hidden dimensions of finished meshes through sophisticated data visualization tools like Rhino, Grasshopper, ArcGIS, and QGIS.

The powerhouse excels in communication through powerful graphics, diagrams, renderings, and storytelling, amplifying their impact. Their rendering expertise allows them



to craft uniquely styled visuals that precisely reflect the client's project while conveying a distinct narrative. Additionally, their prowess in animation and video production brings design stories to life, offering invaluable insights into their projects through sequential media.

Their commitment doesn't just lie in delivering exceptional projects but also in developing tools that revolutionize the field. The firm's pioneering work includes the development of the **Land Kit** plugin, which promises to streamline and enhance the efficiency of landscape design workflows. It marks another milestone in their mission to integrate technology into art and reshape our built environment. The Land Kit plugin offers supercharged workflows to tackle design challenges at scale, making the process more efficient and fluid, propelling landscape design into a new era of innovation.

Learning

CorsiRhino, based in Milan, is an Italian educational institution specializing in Rhinoceros training for businesses and professionals. As certified Rhinoceros trainers since 2005, they offer unique training, fostering countless professionals into the world of design. Their courses range from basic to advanced levels, complemented by personalized support and project consultancy. Join CorsiRhino to unlock Rhinoceros's full potential and elevate your design skills.

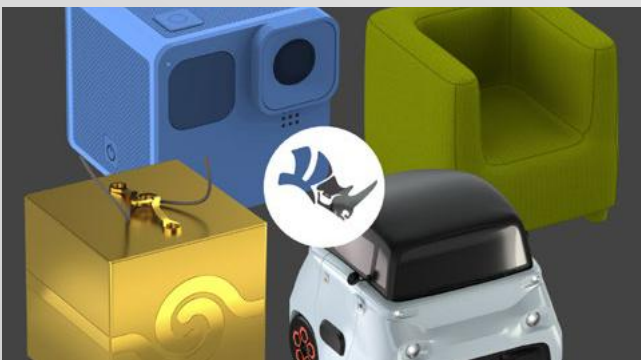
Explore the variety of courses they offer to tailor your learning experience and enjoy a special discount with coupon code: RHINOZINEDEC

Base course



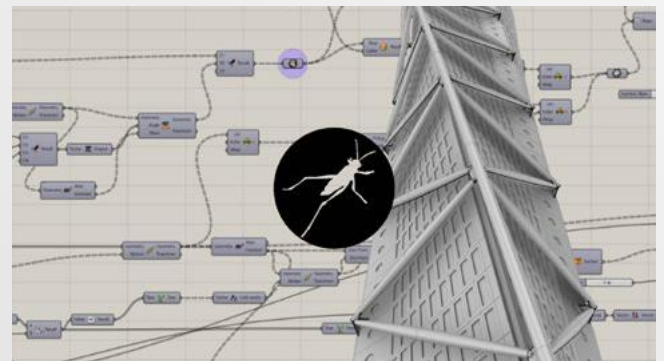
RhinoZoom is the course where one learns correct modeling methodology. A student will be able to reach an understanding of surface modeling with good autonomy by the end of the course. **A must for beginners.**

Custom Courses



Their custom courses are fully tailor-made based on the client's needs. They help improve efficiency or solve specific problems, providing a **great coach for companies.**

Grasshopper Courses



From scripting to computational design, these courses can help you enter the programming world or build your specific tools. **Everyone can be a Grasshopper master.**

Rendering Courses

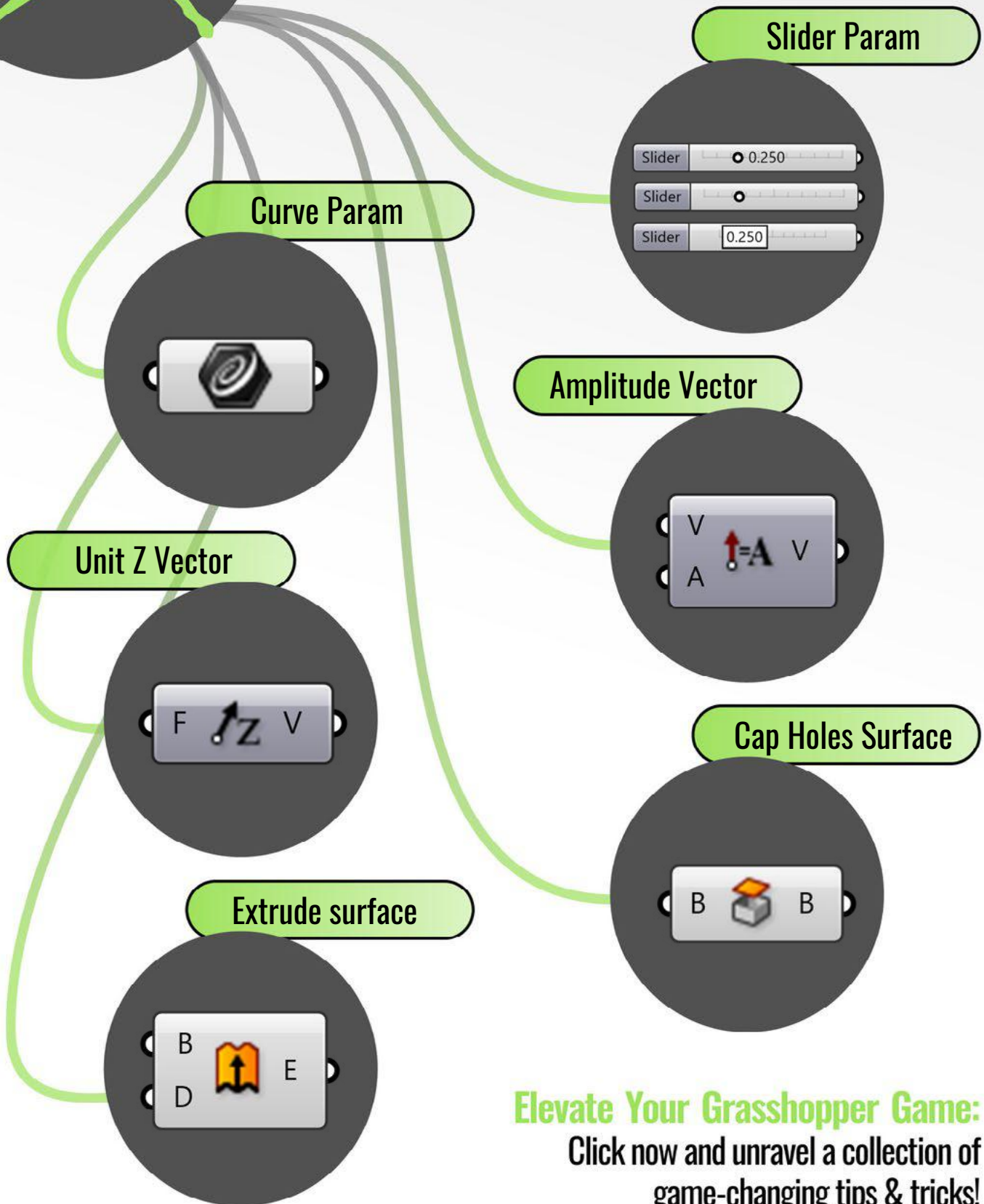


They offer a deep understanding of photorealism rendering, holding both basic and advanced level courses. **Rendering made easy.**

Explore the groundbreaking influence of additive technologies on Design and Architecture in this exclusive document by Riccardo Gatti, founder of CorsiRhino, which unveils a unique taxonomy of 3D patterns for better design control. Access the document **HERE** and seize this unique insight.



Tips, Tricks & resources about Grasshopper



Elevate Your Grasshopper Game:
Click now and unravel a collection of
game-changing tips & tricks!



What is a RhinoFabStudio® ?

A RhinoFabStudio® (fabrication studio) is a McNeel-certified digital workshop, which includes a suite of Rhino and Rhino-compatible programs, computer-controlled tools, and training. The tools cover the various cutting-edge industrial methods and materials for designing, analyzing, and manufacturing just about anything.

Advantages

As an Authorized RhinoFabStudio® you will:

- Be recognized as a leading-edge industrial-grade digital design, analysis, and fabrication expertise provider.
- Have all of your events and activities published to a worldwide audience.
- Have access to specialty digital design, analysis, and fabrication experts.
- Have direct access to many digital design, analysis, and fabrication product development teams.

Once approved:

- You can log in and post your RhinoFabStudio events on the RhinoFabStudio event schedule.
- Your details and event schedule will be posted on the Rhino News Blog.
- Your event schedule will be announced in the RhinoFabStudio News e-mails monthly.

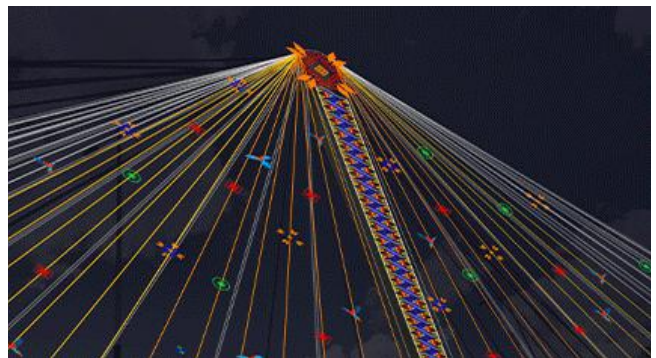
**Want to become an authorized
RhinoFabStudio®?**



Digital Fabricators Project: **‘Colombia Majestuosa’**

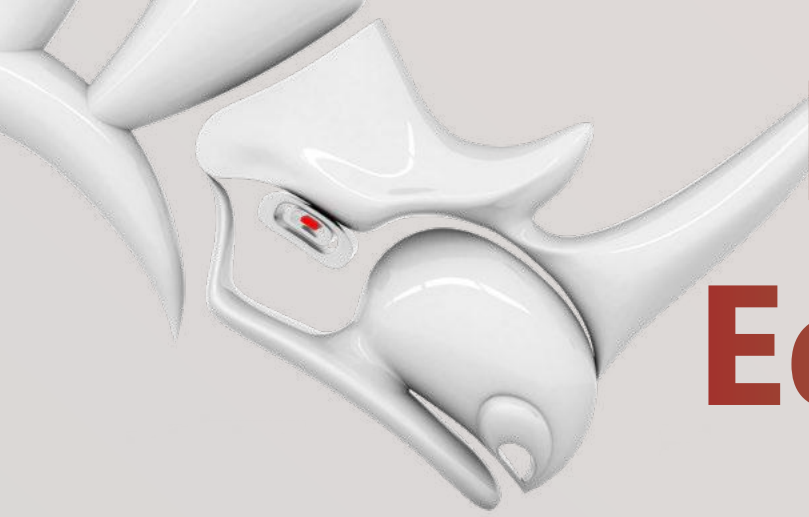
This year, **Noj Estudio** embraced the challenge of redefining the Christmas experience in a Colombian municipality with its unique concept, “Colombia Majestuosa.” Conceived to encapsulate the richness of cultural and natural symbols from various regions, including festive characters, the concept received approval from the Mayor of Envigado and **Enviaseo** executives.

The meticulous process began with the design of processional floats and volumetric decorations for 17 distinct zones involving streets, passages, and parks. Over 100 hand-designed motifs were digitally illustrated, scaled, modeled, and quantified using Rhino. This enabled a 3D preview of the decorations, quantifying 3200 figures, and creating plans for artisanal fabrication involving over 40 weavers and blacksmiths from Envigado.



The challenge lies in transitioning these digital creations into reality through non-industrialized processes with locally available tools. To craft the approximately 8-meter decorations, a blend of artisanal work, including blacksmithing, sewing, and electrical installations, was employed.

On November 10, 2023, the lights illuminated the fruition of this 14-month collaborative effort between digital design and artisanal craftsmanship. The project showcases the fusion of technology and traditional craftsmanship and brings the season’s joy to life in Envigado.



Rhino3D Education

Select courses below, from beginners to specialized ones or **browse all our courses.**

New to Rhino?

Rendering & 3DM
Blocks

Rhino Introduction
and Intermediate

Jewelry

SubD in Rhino 7

Footwear

Rhino and Revit World

Digital Fabrication

Architecture and
2D Drafting

Marine Design

Grasshopper &
GH-Python

Podcasts, Webinars,
and Short Tutorials

Enjoy **20% OFF** with coupon code:
RHINO3DEDUCATION20 at checkout!

www.Rhino3D.Education

Intro to Rhino 8

New Online Course



Unlock the power of Rhino 8 with our exclusive course!

This course uses our latest version for 3D design. You will begin by exploring the interface in Chapter 2, progress to drawing and editing 2D and 3D curves in Chapter 3, and master transforming techniques with the Gumball in 2D in Chapter 4. Chapter 5 will delve into surfaces and lead you to Chapter 6, where you will learn how to create and edit solids using the new Push and Pull capabilities of the Gumball, as well as the incredible Shrink-wrap command. In Chapter 7, you will be briefly introduced to SubD, which will be followed by 3D projects, presentations, and homework in Chapter 8.

Immerse yourself in the course using your preferred language!

Available in English and Spanish,
with subtitles in Italian, French, Portuguese, German, and many others.

Course Details:

- **Duration:** Approximately 4 hours to complete.
- **Format:** Online, featuring hands-on lessons and interactive modules.
- **Platform:** Tailored for Rhino 8, the latest and most powerful version.

After purchase, this course will be available for two years with support from the teachers.

100% OFF List Price: \$US 77.95

Coupon Code: RHINOZINEDEC8

Take this course now: **English** or **Spanish**

Upcoming Events

Hone Your Skills With Rhino



BAY AREA MEET UP

SF/BAY AREA RHINO USER MEET UP HOSTED BY DAVID NAISULER - DEC 11 2023

Looking to connect with other designers and Rhino users in the Bay Area? This is an opportunity to do just that - a place to exchange stories, strategies, and come together to advance new solutions. Temporarily online.

WHERE: Online **TIME:** 7 PM PST
COST: Free **LANGUAGE:** English



GRASSHOPPER FOR 3D PRINTING HOSTED BY CONTROLMAD - DEC 16, 17, 2023

Want to learn to combine the flexibility of Grasshopper with the precision of G-code? This is the course for you. Perfect for professionals or students in engineering, architecture, design, 3D printing, and manufacturing.

WHERE: Online **TIME:** 3-8 PM CET
COST: EUR 150 **LANGUAGE:** English

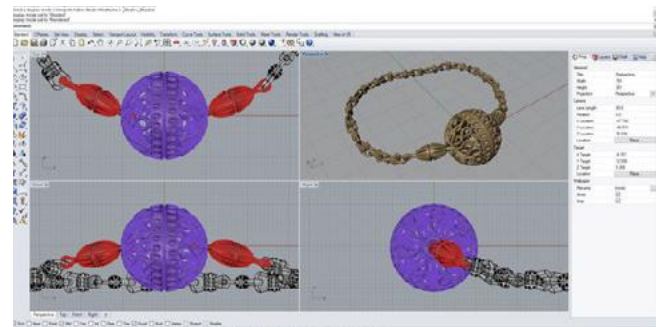


IMMERSION WORKSHOP

INTRO TO 3D MODELING WITH RHINO HOSTED BY PLEXUS CREATIVE - JAN 7, 2023

This is a hands-on workshop where those who are new to Rhino can learn a wide plethora of skills. These include master key commands, tools, navigation techniques, creating curves, surfaces, and solids, and much more.

WHERE: Brooklyn, NY **TIME:** 11AM PST
COST: USD 570 **LANGUAGE:** English

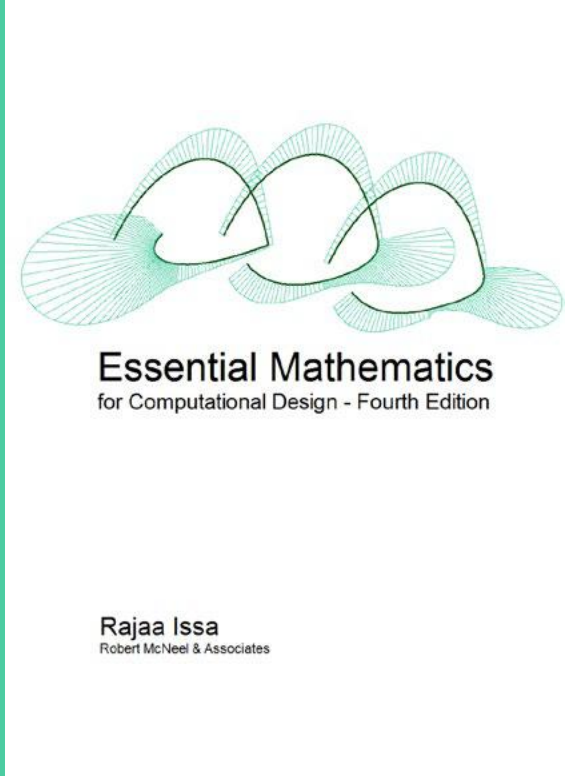


RHINO FOR JEWELRY DESIGN HOSTED BY CAD JEWELLERY - JAN 22 2023

Over the course of seven classes, students can learn the basics of jewelry CAD modeling using Rhino 3D. By the end of their time, students will have the confidence to experiment and create with these tools on their own.

WHERE: Online **TIME:** 10AM GMT
COST: EUR 570 **LANGUAGE:** English

Book Discoveries



Essential Mathematics for Computational Design

Rajaa Issa's "Essential Mathematics for Computational Design" proves indispensable for design professionals entering the dynamic realm of computational 3D modeling. Tailored for those with limited mathematical backgrounds, the book adeptly employs Grasshopper® to visually elucidate foundational concepts. Across three comprehensive chapters, readers explore vector math, matrix operations, transformations, and delve into a nuanced exploration of parametric curves (with a special emphasis on NURBS curves, continuity, and curvature). The material extends to cover NURBS surfaces

and polysurfaces, providing a holistic understanding of the subject.

As a software developer at **Robert McNeel & Associates**, the visionary force behind Rhino, Rajaa Issa brings a unique practical perspective to the content. The book's acceptance as a widely-used textbook in universities globally, coupled with its recognition as a significant contribution to architectural education, as exemplified by the ACADIA 2022 Teaching Award of Excellence, underscores its impact within academic and professional spheres.

Download this book for free and enhance your understanding of essential mathematics in computational design.

Holiday Rendering Compilation



Snowflakes

Posted by Laurent Delrieu



Star (Loft)

Posted by chips1r



The Ginger Bread Man Gang

Posted by Richard Zazworka



Merry Xmas 2022

Posted by Holo

Happy Holidays!

Posted by Gijs de Zwart

Gallery

Explore a showcase of inspiring projects from the Rhinoceros Forums Gallery as captivating images bring to life the creativity, innovation, and artistry behind each posted masterpiece.

Click, like, and support the creators behind these fantastic posts!



Career Corner:

Job Opportunities with Rhino or Grasshopper

DIGITAL SCULPTOR

APPLE

WHO: One of the world's premiere tech companies, which offers fantastic compensation, participatory stock options, and a wide range of benefits.

WHAT: Seeking a CAD sculptor with Rhino proficiency to create high-quality digital 3D surface models to be used in the industrial design and product development process.

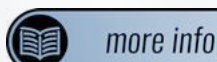


PROJECT DESIGNER

HOK

WHO: A global design, architecture, engineering and planning firm that was ranked as one of Fast Company's most innovative businesses.

WHAT: Looking for a Rhino and Grasshopper designer who can be responsible for the development of the conceptual design of all phases of one or more projects.

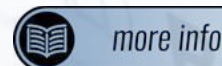


ROCKWORK ENGINEER

DISNEY

WHO: One of the most well-known and beloved entertainment companies of all time that maintains and operates all of Disney Resorts, theme parks, and attractions.

WHAT: Seeking a Rhino/Grasshopper designer to oversee a 30-month project pertaining to the creation of complex rockwork structures for Disney parks.

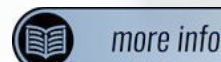


DESIGNER

HARLEY ELLIS DEVEREAUX

WHO: Among the 200 largest architecture and engineering firms in the United States, HED has had a hand in designing a wide range of influential buildings, parks, and products.

WHAT: Seeking a CAD designer to assist with the plans and design for both residential and commercial buildings. Five years of Rhino experience is required.



New plugin to share?

Have a plugin for Rhino or Grasshopper?
Email us to add it to the food4Rhino web site.

Get your project published!

Submit your impressive project for consideration in our Rhinozine! Complete **this form** to share your work. Review the requirements in the same link.

Know about exciting new courses ready for promotion?

We encourage you to share the course information by **email**.

Rhino experts needed!

Find more job listings on our **Rhinoceros web site**

If you have a job opening, just fill out **this form** to list it on our Rhino Jobs page. It's free!

Reach out

Stay in touch

Visit our Official Web site for purchases and support.


www.rhino3d.com


Expand your toolkit with new plugins.


www.food4rhino.com


Find valuable tutorials to enhance your skills.

Rhino3D.Education


 Rhino Tutorials


 @Rhinoceros3d


 @Rhino3D.Education


 @McNeelEurope

Stay updated and engaged by following us on our social media platforms.

 @McNeelRhinoceros

 @mcneel.europe

 @rhino3d.education

 @rhinofabstudio

Share your work, voice your opinions, ask questions, and contribute to a supportive community.

Rhinoceros Forums

GJD3D



www.Rhino3Dzine.com

support@mcneel.com