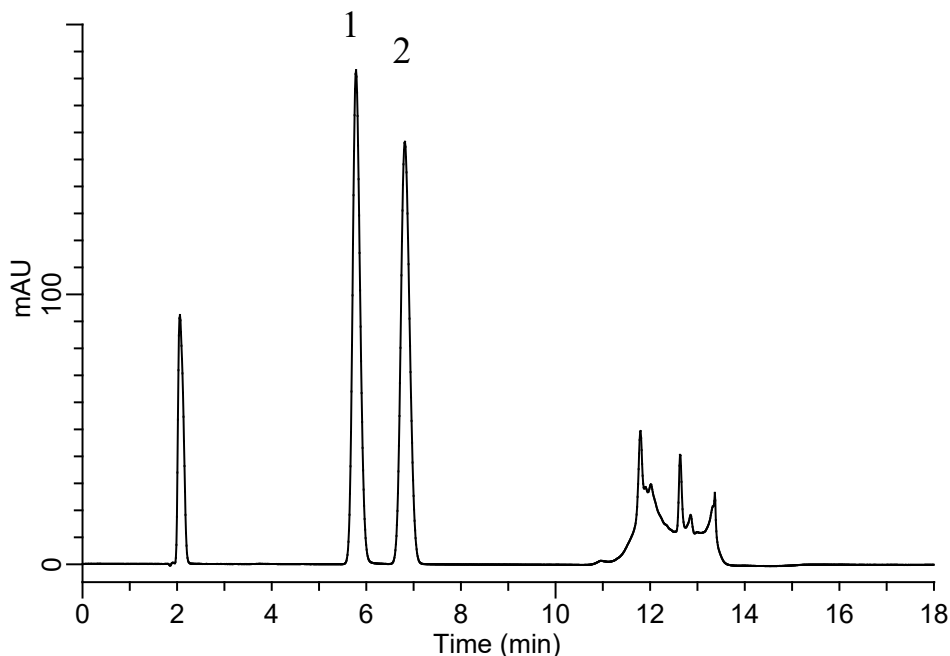


InertSearch for LC

Inertsil Applications

Analysis of Saccharin Sodium Hydrate

Data No. LB684-1054



Conditions

System : Chromaster HPLC system
Column : Inertsil WP300 C18
(5 μ m, 150 x 4.6 mm I.D.)
Column Cat. No. : 5020-05845
Eluent : A) CH₃OH
B) 50 mM K₂HPO₄ in (0.1% H₃PO₄ in H₂O)

Analyte:

1. Phthalic Anhydride 0.1 mg/mL
2. Saccharin Sodium Hydrate 0.1 mg/mL

Time (min)	A (vol. %)	B (vol. %)
0.0	10	90
7.0	10	90
8.0	95	5
10.0	95	5
10.1	10	90
18.0	10	90

Resolution (1, 2) (JP) : 3.21 (≥ 1.5)
Symmetry factor (2) (JP) : 1.11 (≤ 1.5)

Flow Rate : 1.0 mL/min
Col. Temp. : 20 °C
Detection : UV 230 nm
Injection Vol. : 10 μ L
Sample : Standard