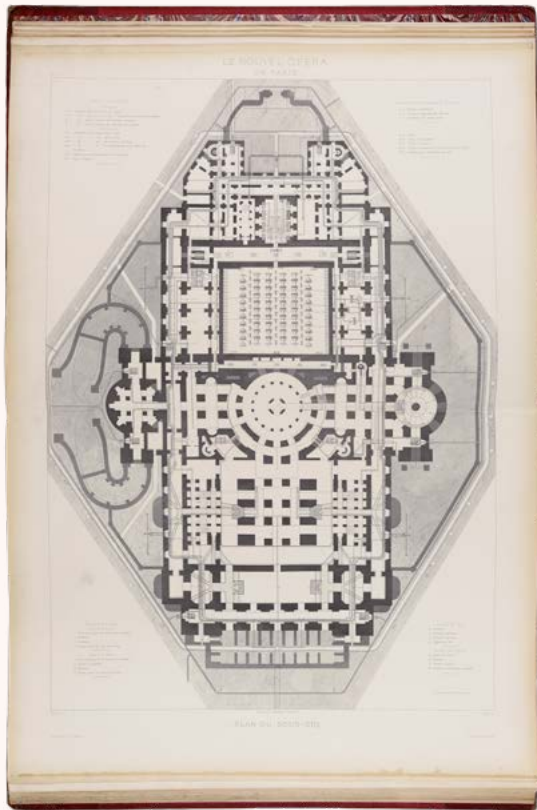
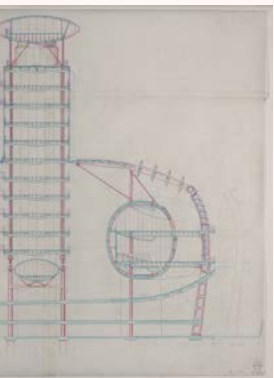
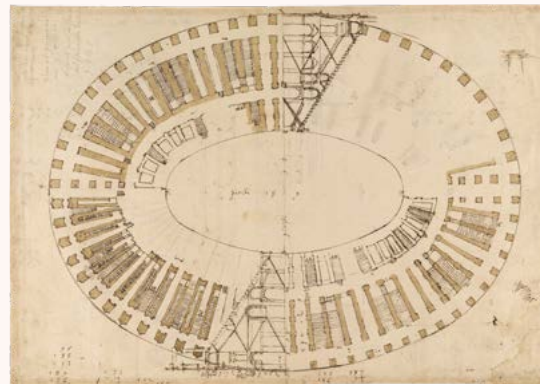


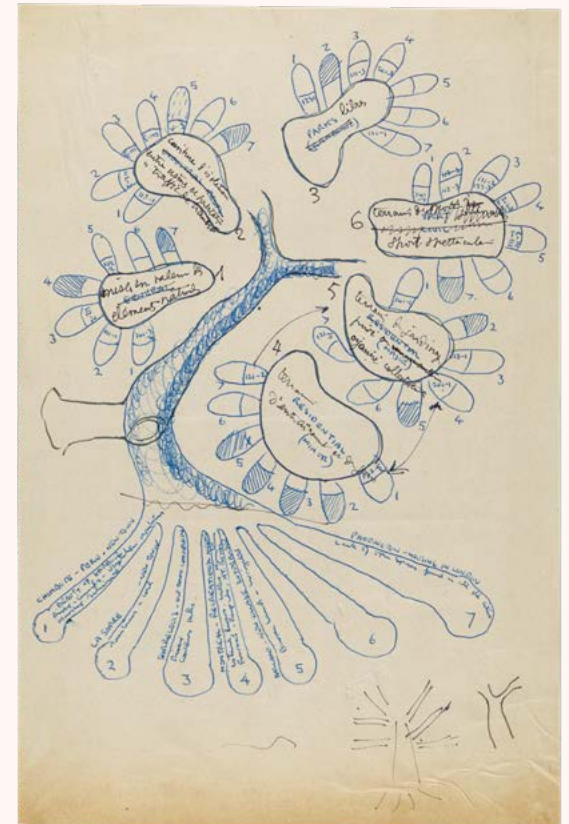
House of Architecture A plan to open up architecture for all



Charles Garnier



Andrea Palladio



Denys Lasdun & Le Corbusier

Welcome

As Chair of the Fundraising Board, it is my great privilege to introduce the House of Architecture – a vision of ambition and cultural significance.

Our vision is founded on a simple truth: architecture has the power to help make the future a better place. I have long believed that, as the most public of arts, architecture must learn from the past to serve society ever better, today and for generations to come. It is not only about buildings, but about ideas, imagination, and above all people and communities.

As we approach RIBA's 200th anniversary, the House of Architecture is our renewed commitment to open up architecture to all. We will restore and reimagine our historic home in London, create a new museum of architecture with world-class spaces for exhibitions and research, and embrace digital innovation to reach audiences globally. Through this work, we will empower the architects, designers, and thinkers of the present and the future.

To realise this vision, we seek £30 million in philanthropic support. We are looking for partners who share our belief in architecture's enduring value. Your support will protect an irreplaceable legacy, amplify its impact, and ensure that our collections—rich with stories, ideas, and possibilities—continue to inspire for centuries.

I invite you to join us in shaping this vision. Together, we can build something extraordinary.

Simon Allford PPRIBA, Chair of Fundraising Board



1 Niall McLaughlin Architects



2 Sir Michael and Lady Patty Hopkins

3 Powell & Moya



4 SANAA



- 1 The New Library, Magdalene College by Niall McLaughlin Architects. Niall McLaughlin received the 2026 Royal Gold Medal. Credit: Nick Kane
- 2 Hopkins House, Hampstead by Sir Michael and Lady Patty Hopkins. The couple were awarded the Royal Gold Medal in 1994. Credit: Martin Charles / RIBA Collections
- 3 Skylon, Festival of Britain, Southbank by Powell & Moya, 1951. Powell & Moya became the first to receive the Royal Gold Medal as a practice in 1974. Credit: RIBA Collections
- 4 The New Museum, USA by SANAA. Credit: Dean Kaufman. SANAA were the recipients of the Royal Gold Medal in 2025

A bicentenary vision

The Royal Institute of British Architects (RIBA) has championed architecture for nearly two centuries. As a charity, our purpose is the advancement of architecture, supported by our members and friends.

The House of Architecture is our bold vision to open up architecture for all.

We will

- Be a generous host for ideas, conversation and debate, both physical and digital, with global reach and impact
- Celebrate exceptional design, bringing greater public recognition of the value of architecture in meeting the challenges of the future
- Elevate education and learning to inspire and support future generations
- Transform how we explore, question, and celebrate architecture's role in shaping our world.

How will we do this?

Three key strands will deliver our vision:

- Our world-class collections of over 4.6 million objects, discovered as a museum of architecture, with new physical and virtual access providing education, inspiration and enjoyment for all
- Our landmark London home revitalised and redefined as a welcoming, inclusive and engaging destination for our members, the profession and the public
- Our digital presence transformed to give global and free access to an extensive and ever-growing knowledge base, sharing rich content, ideas, our collections and resources through a seamless online gateway

Collectively, through these three strands, we will reveal stories and knowledge. We will connect people and ideas.

We will open up architecture for all.

1 Hong Kong and Shanghai Bank, Hong Kong by Foster Associates. Lord Norman Foster started his journey with RIBA when he won the Silver Medal for drawing in 1959, he went on to receive the Royal Gold Medal in 1983. Credit: Martin Charles / RIBA Collections

2 Park Hill Phase 2 by Mikhail Riches. Park Hill Phase 2 was shortlisted for the RIBA Stirling Prize in 2024. Credit: Tim Crocker

3 Pompidou Centre, Paris by Piano & Rogers. Lord Richard Rogers received the Royal Gold Medal in 1985. Credit: Martin Charles / RIBA Collections



3 Piano & Rogers

1 Foster Associates



2 Mikhail Riches



Why now?

Our world is facing unprecedented challenge: evolving economies, accelerating technologies, shifting societies and a changing climate.

Buildings account for nearly 40% of energy-related carbon dioxide emissions globally. And yet, as the global urban population surges — expected to exceed 68% by 2050 — the demand for expanded cities and upgraded infrastructure grows exponentially.

High quality architectural design is the solution to creating smarter, viable communities that prioritise both people and planet. What is often seen as aspirational architecture must now be recognised as essential for a sustainable and equitable future.

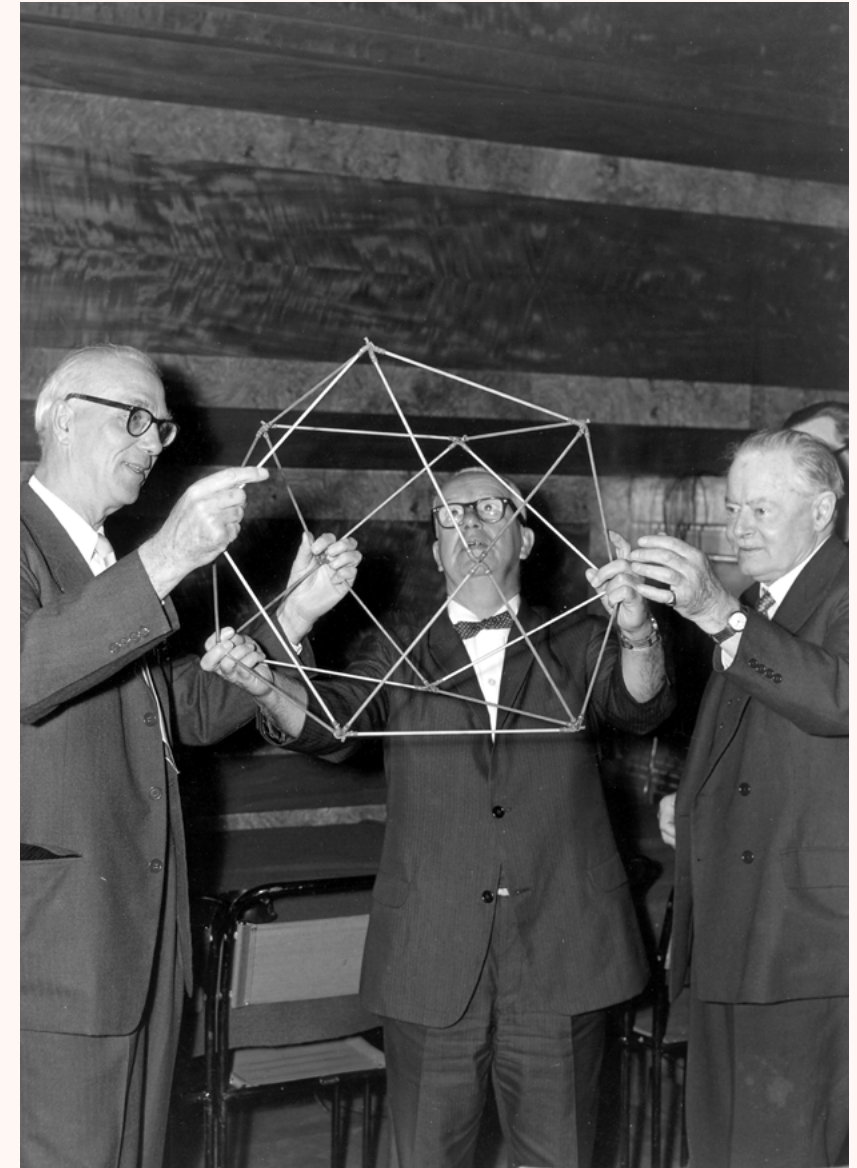
We are determined to show what architecture can do, prove why it matters, and demonstrate how society benefits.

1 Richard Buckminster Fuller (centre) with Ove Arup and Kenneth Cross at 66 Portland Place, 1968. Fuller was awarded the Royal Gold Medal in 1968 for his dome structures that influenced the Eden Project. Credit: John McCann/RIBA Collections

2 Design for the Eden Project: section through the Biomes by Grimshaw Architects. Credit: RIBA Collections. Sir Nicholas Grimshaw CBE received the Royal Gold Medal in 2019

3 Eden Project under construction . Photograph by Monica Pidgeon, 1999. Credit: Monica Pidgeon / RIBA Collections. Monica Pidgeon was the influential editor of *Architectural Design* from 1946 to 1975. Her photographic archive is held in the RIBA Collections

1 Ove Arup, Richard Buckminster Fuller, and Kenneth Cross



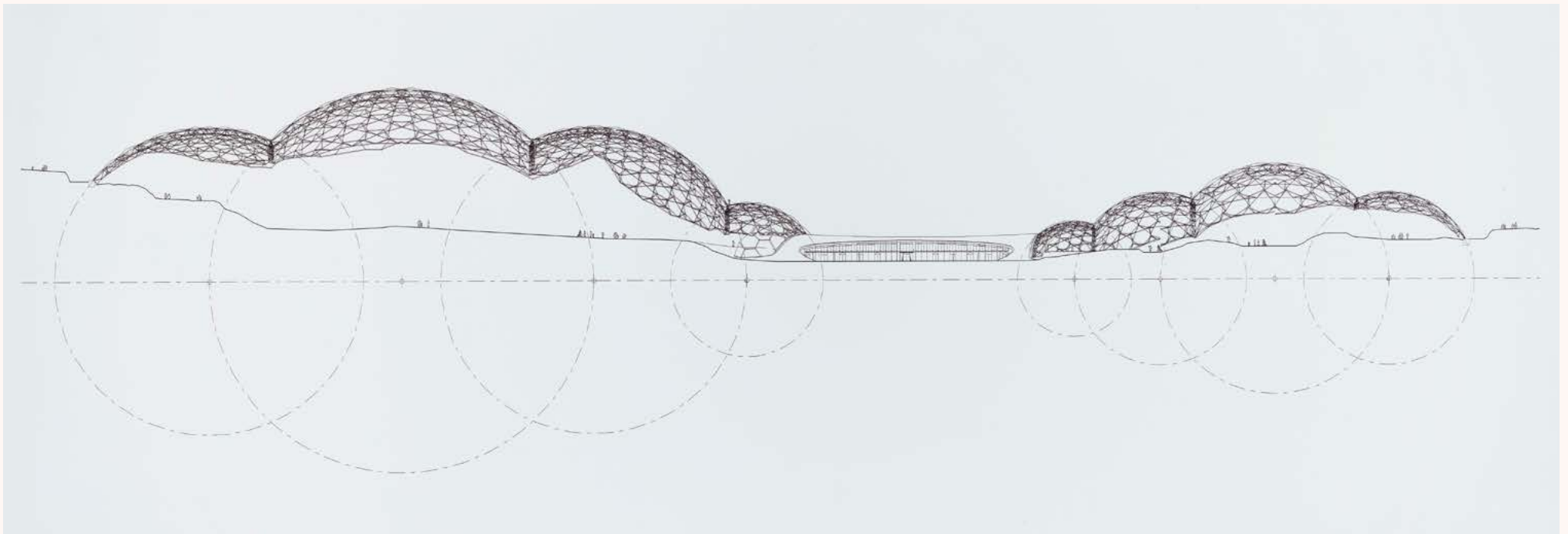
“A reimagined RIBA will show the world the value that architects bring to tackling the biggest challenges facing our planet.”

Jack Pringle, Chair of RIBA Board



3

2 Grimshaw Architects



4.6 million stories to tell

The RIBA Collections are one of the largest and most diverse architectural collections in the world, and an extraordinary resource for architects, researchers, students, and the public.

We care for 4.6 million historic and modern objects that represent the national collection for architecture in the UK. From 15th-century books and drawings, to paintings and photographs, to models and archives, our collections offer global scope and rich historical detail.

And they continue to grow, acquiring objects and archives every year that enrich narratives and continue the story.

We will

- Bring together our drawings, models, photographs, and many other objects in a new physical site, to showcase their significance through world class facilities and a museum experience
- Better understand and care for our collections, to ensure they are accessible for everyone to experience and enjoy, today and in the future
- Forge new partnerships with national and international cultural, educational, and research organisations to share the fascinating stories from our collections worldwide

“A world-class collection is not only defined by its size, but by our behaviour with it. To be the partner of choice, we must be willing to share, teach and integrate our collection into the wider community, building the capacity to make it accessible and impactful for all.”

Dr Valerie Vaughan-Dick MBE, Chief Executive, RIBA



A place to debate and be inspired

Our landmark Grade II listed home at 66 Portland Place in London is regarded as a pivotal building in the development of modernist architecture in the UK.

Designed by George Grey Wornum, and opened in November 1934 by King George V, it beautifully blends Art Deco, Swedish Modernism, and Georgian styles.

Our goal is to reshape this flagship building as a cultural destination which will spark curiosity, serve as a forum for critical debate and conversation, and celebrate the story of architecture.

A house of architecture – open to all.

We will

- Revive this landmark building, celebrating its unique heritage and transforming access and sustainability
- Create a dynamic and engaging destination, infused with models, drawings and stories of the architecture of today and tomorrow
- Welcome the public, the profession, and our members, to explore and connect
- Nurture interest in architecture for all - a place to open horizons, inspire a future career, or simply meet a friend in the design-themed café



A world of digital discovery

Our vision is to welcome everyone to discover and be inspired by architecture. We want to make knowledge and ideas freely available, wherever or whoever you are.

Our 'digital reading room' will mirror and enhance our onsite engagement. It will unlock our collections and content, providing seamless global access to anyone interested in the world around them.

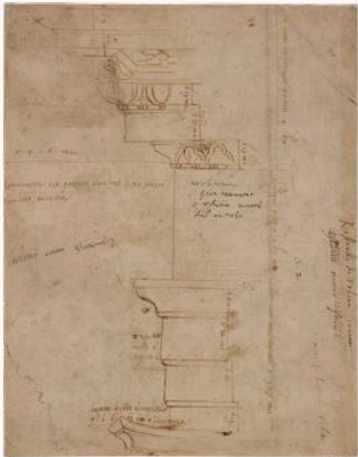
With 140,000 digital images of the RIBA Collections currently available, our ambition is to achieve 1 million images digitised and accessible by our bicentenary in 2034. And, as technology advances, we will harness bespoke digital tools to secure existing and new collections for the future.

We will

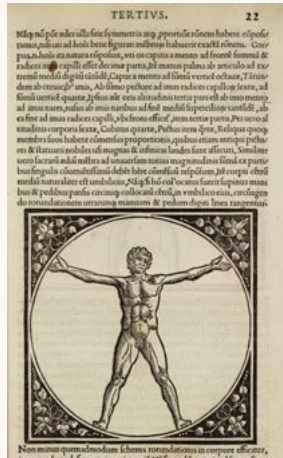
- Revolutionise digital experience by creating a seamless, unified gateway to our content and programmes
- Develop and lead new approaches to architectural digitisation, AI integration, and preservation of born-digital artefacts, modernising standards and creating a best-practice model for digital content of the future
- Create a global resource accessible freely to all to engage with architecture, its history, present and future



A glimpse of the RIBA Collections



1 Raphael



2 Vitruvius



3 Balkrishna V. Doshi

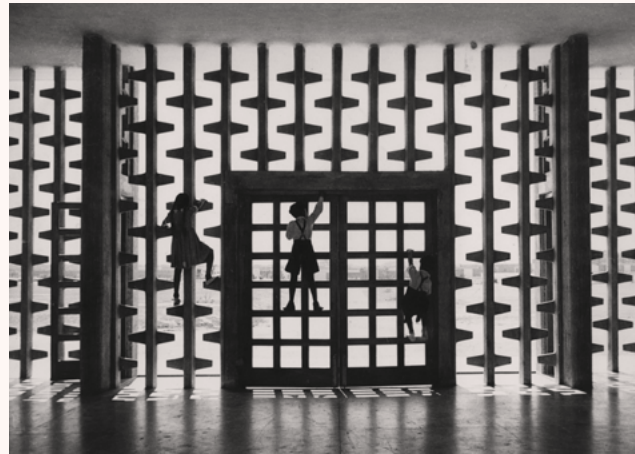


6 Frank Lloyd Wright

4 Alfred Waterhouse



5 Dame Jane Drew



7 Sir Charles Barry





8 Reubens



9 Ernő Goldfinger



10 Sir Christopher Wren

11 Sir Giles Gilbert Scott



12 Inigo Jones



- 1 Study of the Pantheon, Rome: detail of entablature by Raphael, 1510. Credit: RIBA Collections. This drawing was most recently on loan to the Metropolitan Museum of Art, New York for *Raphael: Sublime Poetry* (29 March – 28 June 2026)
- 2 Page from Fra Giovanni Giocondo's 1511 edited edition of Vitruvius' *De Architectura* treatise, first written in the first century BC. Credit: RIBA Collections
- 3 Plan of Vidhyadhar Nagar, Jaipur by Balkrishna V. Doshi, 1980. Credit: RIBA Collections
- 4 Designs for the Natural History Museum: perspective of main entrance hall by Alfred Waterhouse, 1878. Credit: RIBA Collections
- 5 Higher Secondary School, Sector 23, Chandigarh by Dame Jane Drew, 1956. Credit: RIBA Collections
- 6 Perspective drawing by Cyril Arthur Farey of the Imperial Hotel, Tokyo, designed by Frank Lloyd Wright, 1929. Credit: RIBA Collections
- 7 Preliminary design for the clock face for the Palace of Westminster by Sir Charles Barry, 1840. Credit: RIBA Collections. The Elizabeth Tower restoration by Purcell won the RIBA London Award 2025
- 8 Design for a palace in Genoa for Luigi Centurione by Peter Paul Reubens, 1622. Credit: RIBA Collections
- 9 Trellick Tower, Cheltenham Estate, London by Ernő Goldfinger, 1972. Credit: Architectural Press Archive / RIBA Collections. The Architectural Press Archive is the single largest archive in the RIBA Photographs Collection
- 10 Diagram for a sign language system, drawn by Sir Christopher Wren in the 1750s and inserted into RIBA's extra-illustrated heirloom copy of *Parentalia* (London, 1750). Credit: RIBA Collections
- 11 Designs for Battersea Power Station by Scott, Halliday & Agate, 1926. Credit: RIBA Collections. In 1925, RIBA presented Sir Giles Gilbert Scott with the Royal Gold Medal, and in 1933 he became the institute's President
- 12 Design for the re-fronting of Old St Paul's Cathedral, City of London by Inigo Jones, 1642. Credit: RIBA Collections

Why RIBA?

As a vibrant, living cultural institution, RIBA is the organisation to deliver this vision.

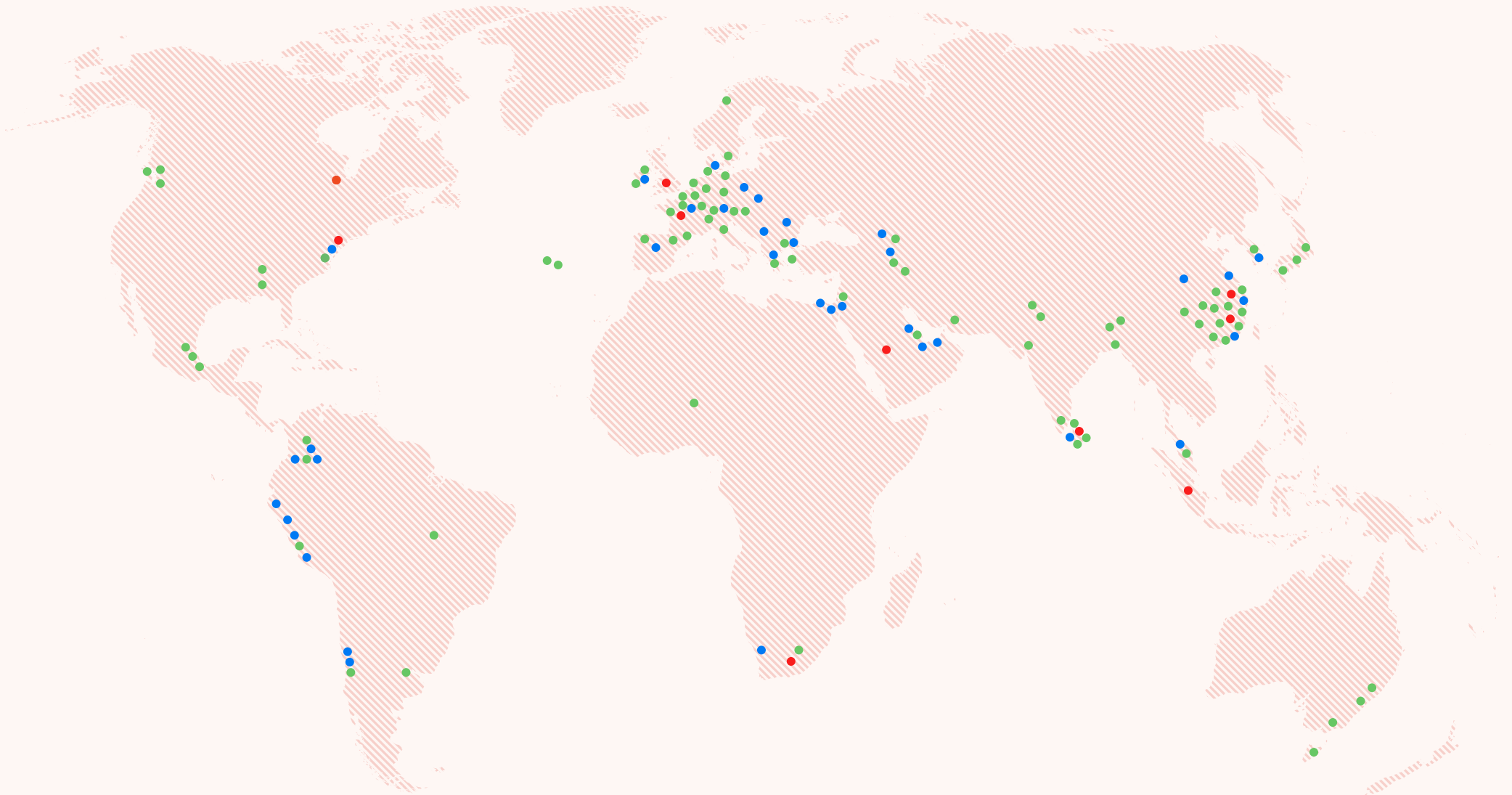
Founded in 1834, our Royal Charter defined our purpose as “the advancement of architecture”, a purpose which remains to this day.

Supported by our members and friends, we:

- Promote the Gold Standard for the education of architects, validating over 240 architecture programmes in 25 countries worldwide, supporting students and lifelong learning, and widening access to the profession
- Elevate architectural excellence through the Royal Gold Medal, Stirling Prize, Presidents Medals for students, and more than 100 prestigious awards nationally and internationally every year
- Care for and share the RIBA Collections, over 4.6m of the world’s most significant architectural books, drawings, photographs, and artefacts, dating from 1478 to the present day
- Engage widely through our public and learning programmes, lectures, and exhibitions
- Speak for architecture with governments and policy makers on the world stage
- Support practicing architects globally, actively working with over 57,000 members worldwide

Our activity reaches across the world.

- Membership
RIBA Chapters and Member Groups
- Education
Architecture Schools with RIBA Accredited courses
- Awards
RIBA International Award winners



Pathway

In 2034, we will celebrate RIBA's bicentenary as a global hub for architecture. Milestones on the road ahead include:

2025

Transformation underway

- Our London home at 66 Portland Place closed as vital renovation and access works began
- Our library relocated to a temporary site, still freely accessible to all thanks to a valued partnership with The London Archives
- RIBA programmes and activities continued nationally and internationally as we plan for the next phase

by 2029

66 Portland Place reopens

- A celebration of architecture - a place to inspire, engage and excite everyone
- Engaging spaces and stories open to all, with vibrant interpretation, exhibitions, activities and café, showcasing architecture throughout the building
- A reimagined library housing 150,000 books and 15,000 journal volumes accessible to all for free
- Warmly welcoming 100,000+ visitors per year

by 2031

RIBA Collections revealed

- 4.6 million+ stories told, with our collections brought together as a museum of architecture
- Enhanced facilities for research, conservation, and digitisation
- Freely open to all – public, professionals, members, students, and academics

by 2034

Digital access democratised

- 1 million images spanning our collections, freely accessible online
- Seamless, unified new discovery layer to our content and programmes to inspire creativity and ideas
- True global reach connecting across the world

Hayward Gallery, South Bank Arts Centre, London.
Photograph by John Donat, 1968. Credit: John Donat /
RIBA Collections. John Donat was one of the foremost
British architectural photographers of the second half
of the 20th century. RIBA holds his entire archive of
prints, negatives, and transparencies



Opportunity

Design the future together

RIBA is a registered charity with a mission to advance architecture for all.

We are determined to transform how the world engages, experiences and understands the role of architecture in all our futures.

Our vision is bold. An ambition of this scale is not something we can achieve alone. We must raise £30 million of philanthropic support, from foundational to transformational gifts, to make this possible.

With your help, we can reveal the power of architecture. Every contribution is valued, and there are many ways you might choose to be associated, including the naming of beautifully restored and reimaged spaces, special collections, and engagement programmes.

We are ready to have a conversation

Contact us

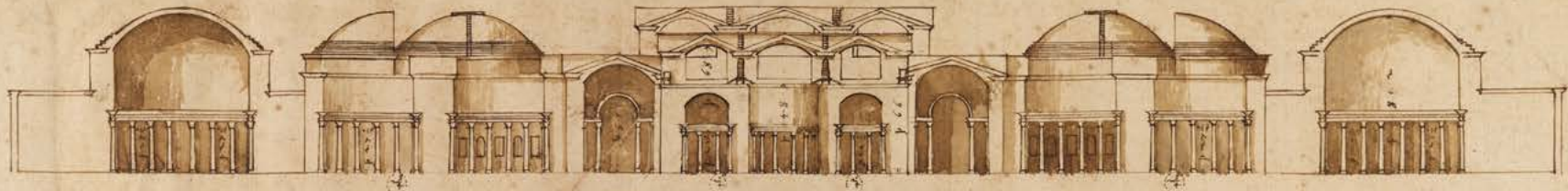
Stephanie Pisharody
Director of Development
development@riba.org
+44 (0)20 7307 5352

riba.org
66 Portland Place, London W1B 1AD

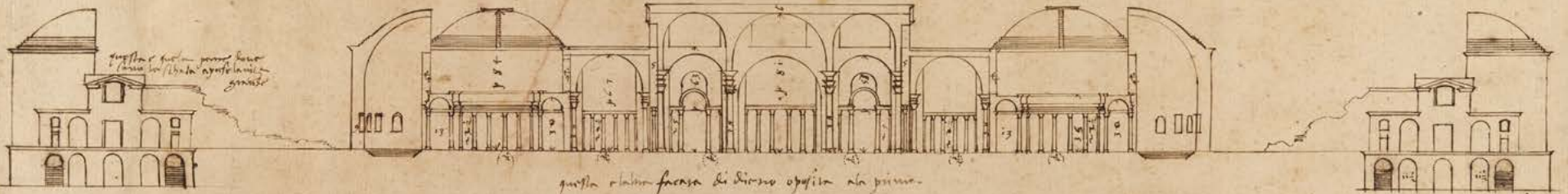
UK Registered Charity Number 210566

Reconstruction of the Baths of Trajan, Rome: facades and sections by Andrea Palladio, 1560. Credit: RIBA Collections. RIBA is the custodian of the greatest number of Palladio drawings, holding over 355 of 450 known to be in existence. Alongside the Centro Internazionale di Studi di Architettura Andrea Palladio in Vicenza, with support from the British Architectural Library Trust USA, RIBA is working to publish a much anticipated catalogue of his drawings in 2027

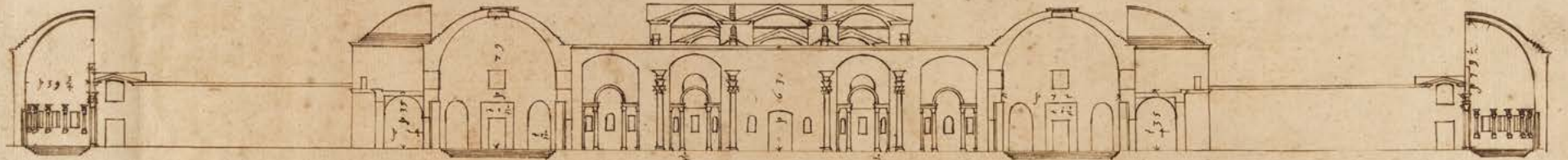
questo e la prima divisione del tempio di s. pietro
a s. pietro in vincula a Roma sul monte equitino



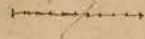
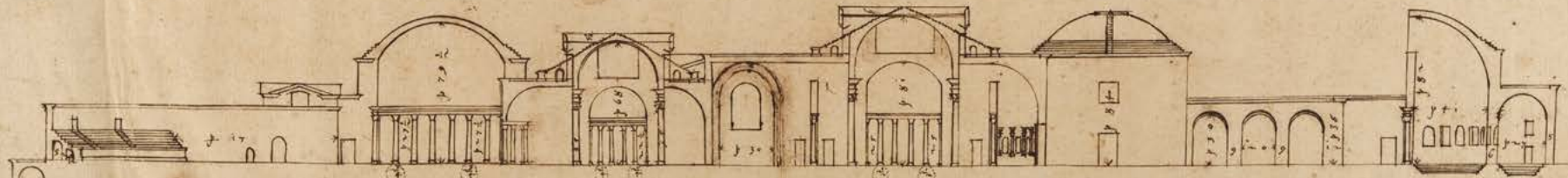
questo e la parte terminale



questo e la facciata di s. pietro opera di s. pietro



questo e la parte terminale e nuovo



.....



Back cover (left to right)

Variant plan for Hardwick Hall, Derbyshire by Robert Smythson. Credit: RIBA Collections

Taichung Metropolitan Opera House by Toyo Ito, 2006. Credit: RIBA Collections. Toyo Ito was awarded the Royal Gold Medal in 2006

Letter from Sir Edwin Lutyens to Sir Herbert Baker with sketch plans for his houses at Little Thakeham, West Sussex, and Marsh Court, Stockbridge, 1903. Credit: RIBA Collections. RIBA holds the Lutyens archive including drawings, letters, and photographs

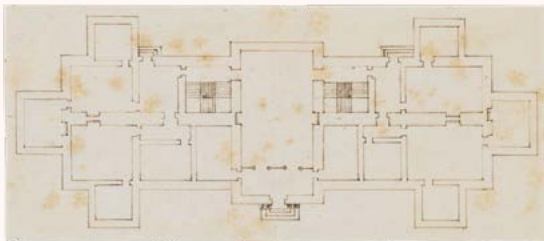
Post-competition, pre-contract drawing of the Hotel du Departement des Bouches-du-Rhone, Marseille : cross section by Alsop & Stormer, 1990. Credit: RIBA Collections

Front cover (left to right)

Palais Garnier Opera de Paris: basement plan by Charles Garnier, 1875. Credit: RIBA Collections

Measured drawing of an unidentified amphitheatre: plans and sections by Andrea Palladio, 1560. Credit: RIBA Collections

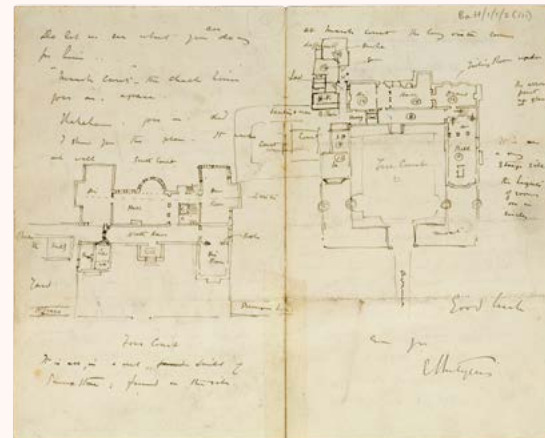
Drawing by Denys Lasdun on the organisation of space with annotations by Le Corbusier from the former's Egophile sketchbook, 1949. Credit: RIBA Collections



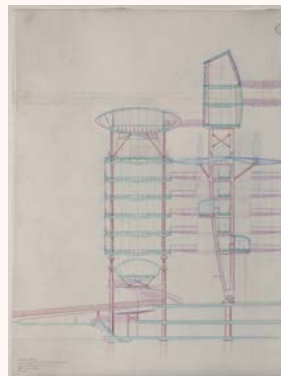
Robert Smythson



Toyo Ito



Sir Edwin Lutyens



Alsop & Stormer