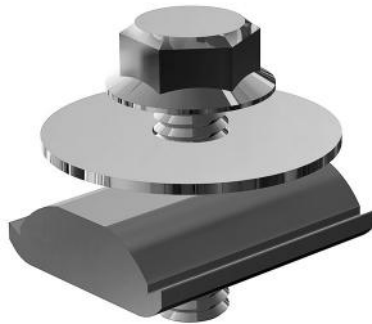


## Module Level Power Electronics (MLPE)

Use Tamarack MLPE Rail Adapters to attach Enphase microinverters or SolarEdge Optimizers to the rails.

The large flat washer is installed between the mounting plate of the MLPE and the top of the rail. Tighten bolt with a 1/2" socket to proper torque.



## Wire Management

Place electrical conductors and connectors at bottom of rail channels.

Install wire protection clips where necessary to keep wires in channels.

When using 1.6-inch rail, it is possible to damage connectors or large bundles of wire when 50-50 bolts are tightened. Position connectors and bundles appropriately to prevent risk of ground faults.

