



# ALBURY GARDENS LIFESTYLE ESTATE

*by* LINCOLN PLACE

DESIGNED & BUILT BY YARRAWONGA MANUFACTURED HOUSING PTY LTD

[WWW.YARRAHOUSING.COM.AU](http://WWW.YARRAHOUSING.COM.AU)



# Our POINT OF DIFFERENCE

**Established in 1998** | We have 25 years' experience providing quality built modular Tourism Holiday Villas, Commercial and Lifestyle Village dwellings throughout VIC, NSW and SA.

YMH is able to draw on their extensive design and development experience to maximize the return on investment for the Holiday Park Owner by creating an attractive, affordable and quality modular Holiday Villa or commercial building to be enjoyed by the end user – the holiday park guest.

YMH will work with our client to ensure the floorplan chosen for the tourism floorplan will suit their individual holiday park. With 25 years in the modular building industry, YMH have tried and tested processes to ensure all aspects are as streamline as possible; from designing and creating the floorplan, choosing on-trend colours and material selections right to on-site delivery.

YMH is proud to be the trusted supplier of of tourism dwellings to multiple holiday parks within Victoria, New South Wales and South Australia; all of which showcase our livable floorplans and quality construction that sets YMH apart from our competitors...That's the YMH Point of Difference.

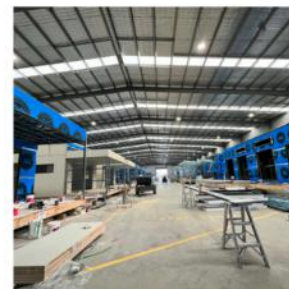
**True Quality & Finish** | All our modular dwellings are designed and built to the very highest specifications and with a true focus on quality and finish.

**Built to Last** | Every modular building is built to meet Australian standards, have Structural Engineers Certification and are constructed to meet the NSW, VIC and SA Local Government (Manufactured Home Estates, Caravan Parks, Camping Grounds and Moveable Dwellings) Regulations.

**We will meet your needs** | By complying with these exacting standards our modular dwellings can be relocated anywhere, so whether you are in rural, city or coastal areas, bush fire prone (BAL Rating) or in high wind prone areas YMH has a solution to meet your requirements.



Find out more about YMH



## 1 Innovative Building Techniques

YMH has developed numerous innovative methods over the years in the construction of our transportable buildings where they need to withstand the rigors of travel, distance, weather, and sometimes rough terrain. Our designs are fully engineered comprising chassis with steel framing complete with extensive bracing to cope with those harsh elements of transport.

There is very little waste of raw materials as material off cuts are reassigned to other facets of the construction processes. Our commitment to continuous improvement throughout our construction process by applying LEAN manufacturing principles provides regular updates and change to operating procedures.

## 2 An Industry Perspective

YMH is seen as committed to providing a safe workplace for its employees, subcontractors and suppliers.

YMH has developed a reputation with its clients and the broader community as the provider of high-quality transportable buildings, completed on time and within budget.

We only use subcontractors who meet exacting standards in their own work ethic, quality finish and adhere with strict compliance to our building schedule.

YMH prides itself on return commercial clients and proactively seeks regular engagement with customers for feedback in promoting positive customer outcomes and experiences.

## 3 Skilled Tradesman

The YMH workforce consists of skilled carpenters, carpentry apprentices, electricians, plasterers, painters, plumbers, tilers, roof plumbers and steel fabricators.



Albury Gardens Lifestyle Estate offers over 55's independent permanent living options. Offering a semi-rural setting and a village of like-minded people, Albury Gardens Lifestyle Estate offers your new lifestyle set in the scenic Albury township.

Our established community has extensive community areas, a large community facility near the pool.



 *Discover a new lifestyle today!*





ALBURY GARDENS LIFESTYLE ESTATE

by LINCOLN PLACE

# Community Centre



DESIGNED & BUILT BY YARRAWONGA MANUFACTURED HOUSING PTY LTD





ALBURY GARDENS LIFESTYLE ESTATE

by LINCOLN PLACE



*Lifestyle*

**H O M E**

**D E S I G N S**

DESIGNED & BUILT BY YARRAWONGA MANUFACTURED HOUSING PTY LTD

# THE COVE

2 BEDROOM FLOORPLAN



ALBURY GARDENS LIFESTYLE ESTATE

by LINCOLN PLACE

DESIGNED & BUILT BY YARRAWONGA MANUFACTURED HOUSING PTY LTD



A



B

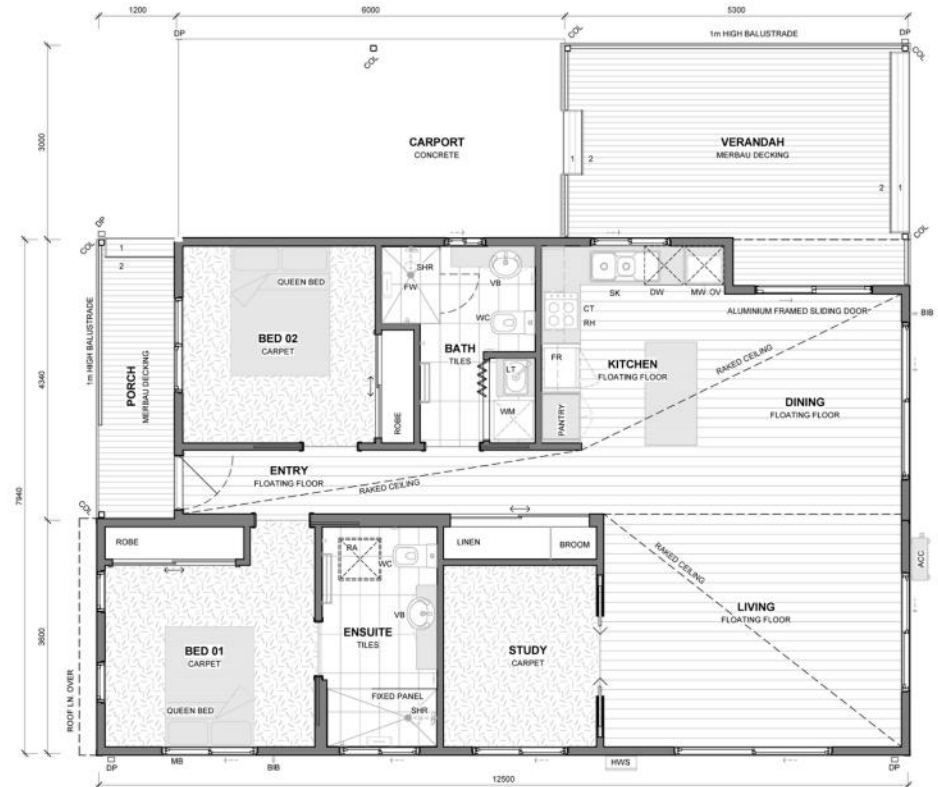


C



# THE COVE

## 2 BEDROOM FLOORPLAN



Copyright © 2024 by Yarrowonga Manufactured Housing Pty Ltd



ALBURY GARDENS LIFESTYLE ESTATE

by LINCOLN PLACE

\* These are the External Colourway Options for this floorplan - **A, B or C**

# THE RIVER

2 BEDROOM FLOORPLAN



ALBURY GARDENS LIFESTYLE ESTATE

by LINCOLN PLACE

DESIGNED & BUILT BY YARRAWONGA MANUFACTURED HOUSING PTY LTD





A



B

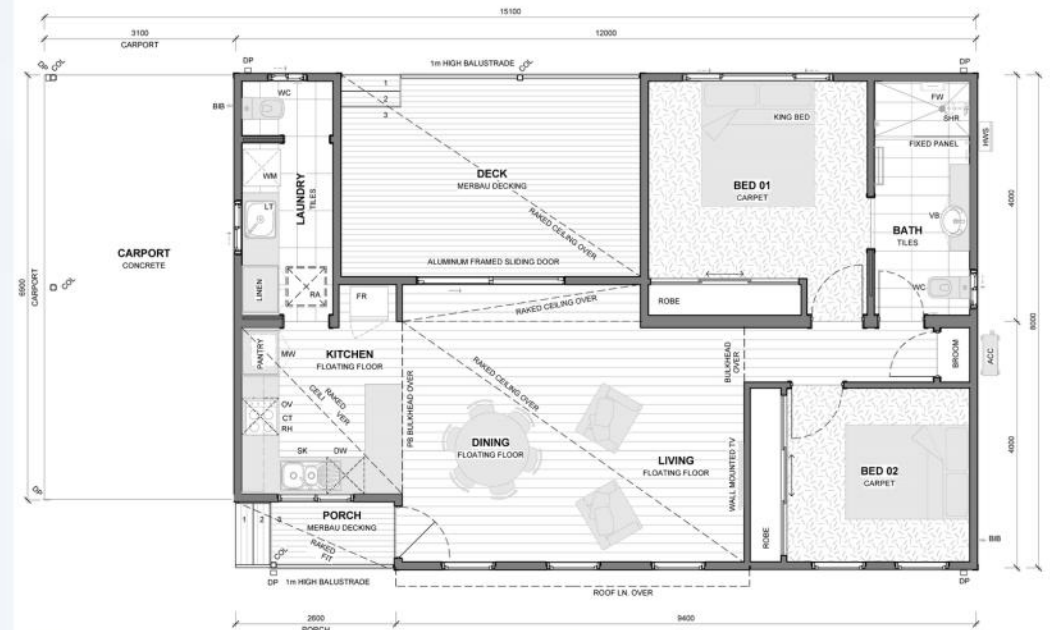



C



# THE RIVER

## 2 BEDROOM FLOORPLAN



 Copyright © 2024 by Yarrowonga Manufactured Housing Pty Ltd

\* These are the External Colourway Options for this floorplan - **A, B or C**



ALBURY GARDENS LIFESTYLE ESTATE  
by LINCOLN PLACE

# THE MOUNTAIN

2 BEDROOM FLOORPLAN



ALBURY GARDENS LIFESTYLE ESTATE

*by* LINCOLN PLACE

DESIGNED & BUILT BY YARRAWONGA MANUFACTURED HOUSING PTY LTD



# THE MOUNTAIN

## 2 BEDROOM FLOORPLAN

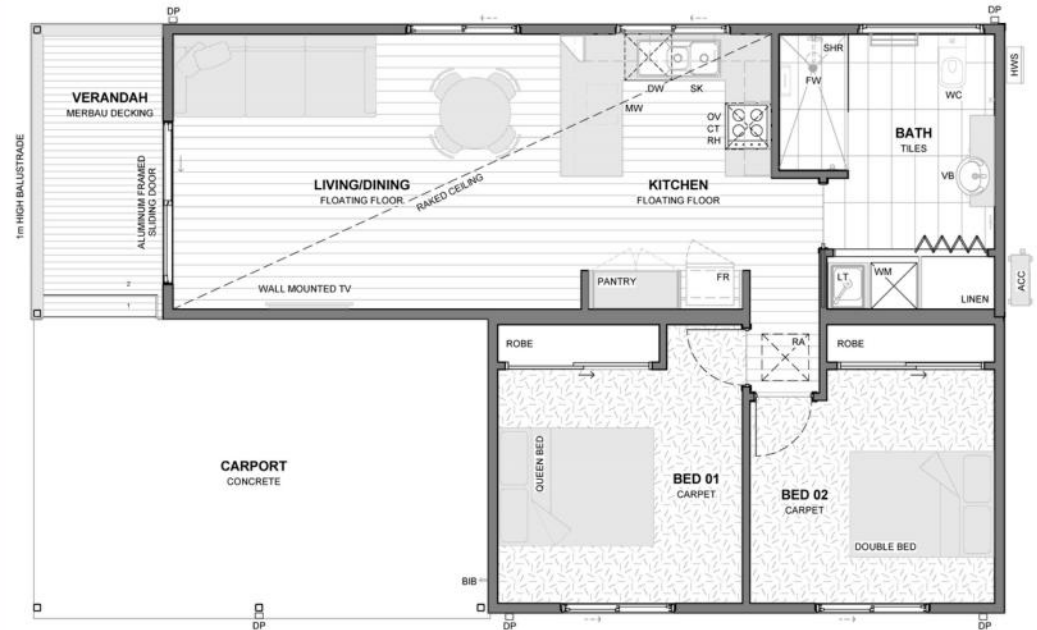
A




B



C



 Copyright © 2024 by Yarrawonga Manufactured Housing Pty Ltd



ALBURY GARDENS LIFESTYLE ESTATE

by LINCOLN PLACE

\* These are the External Colourway Options for this floorplan - **A, B or C**

# THE SPRING

2 BEDROOM FLOORPLAN



ALBURY GARDENS LIFESTYLE ESTATE

by LINCOLN PLACE

DESIGNED & BUILT BY YARRAWONGA MANUFACTURED HOUSING PTY LTD



A



B




C



# THE SPRING

## 2 BEDROOM FLOORPLAN



 Copyright © 2024 by Yarrawonga Manufactured Housing Pty Ltd



ALBURY GARDENS LIFESTYLE ESTATE

by LINCOLN PLACE

\* These are the External Colourway Options for this floorplan - **A, B or C**

# THE TIDE

2 BEDROOM FLOORPLAN



ALBURY GARDENS LIFESTYLE ESTATE

by LINCOLN PLACE

DESIGNED & BUILT BY YARRAWONGA MANUFACTURED HOUSING PTY LTD



A



B

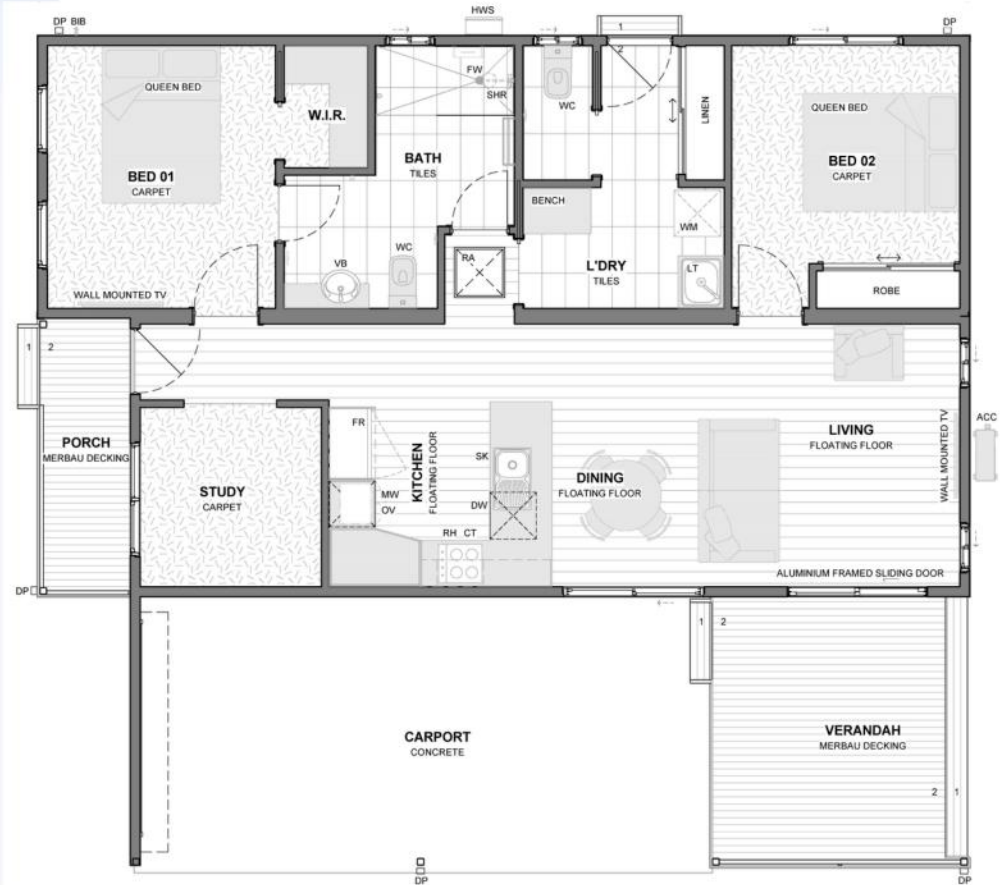


C



# THE TIDE

## 2 BEDROOM FLOORPLAN



 Copyright © 2024 by Yarrowonga Manufactured Housing Pty Ltd



ALBURY GARDENS LIFESTYLE ESTATE

by LINCOLN PLACE

\* These are the External Colourway Options for this floorplan - **A, B or C**

# THE HAVEN

2 BEDROOM FLOORPLAN



ALBURY GARDENS LIFESTYLE ESTATE

*by* LINCOLN PLACE

DESIGNED & BUILT BY YARRAWONGA MANUFACTURED HOUSING PTY LTD





A



B

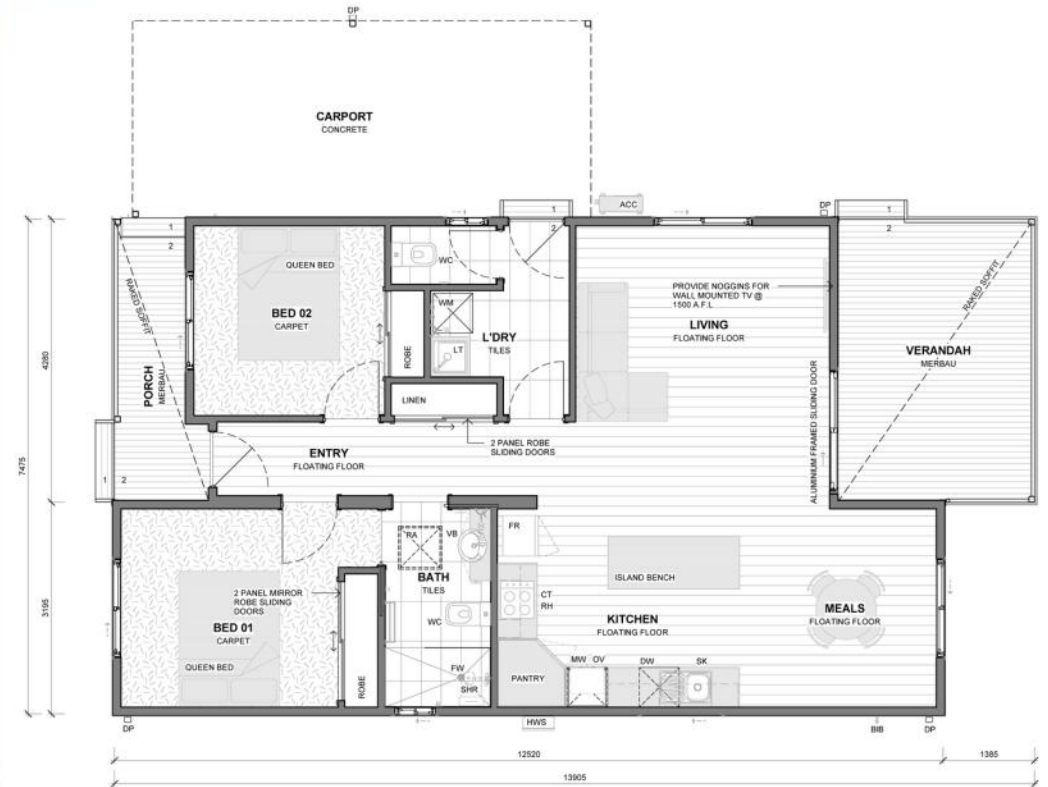


C



# THE HAVEN

## 2 BEDROOM FLOORPLAN



Copyright © 2024 by Yarrawonga Manufactured Housing Pty Ltd



ALBURY GARDENS LIFESTYLE ESTATE

by LINCOLN PLACE

\* These are the External Colourway Options for this floorplan - **A, B or C**

# THE LUNA

2 BEDROOM FLOORPLAN



ALBURY GARDENS LIFESTYLE ESTATE

by LINCOLN PLACE

DESIGNED & BUILT BY YARRAWONGA MANUFACTURED HOUSING PTY LTD



# THE LUNA

## 2 BEDROOM FLOORPLAN

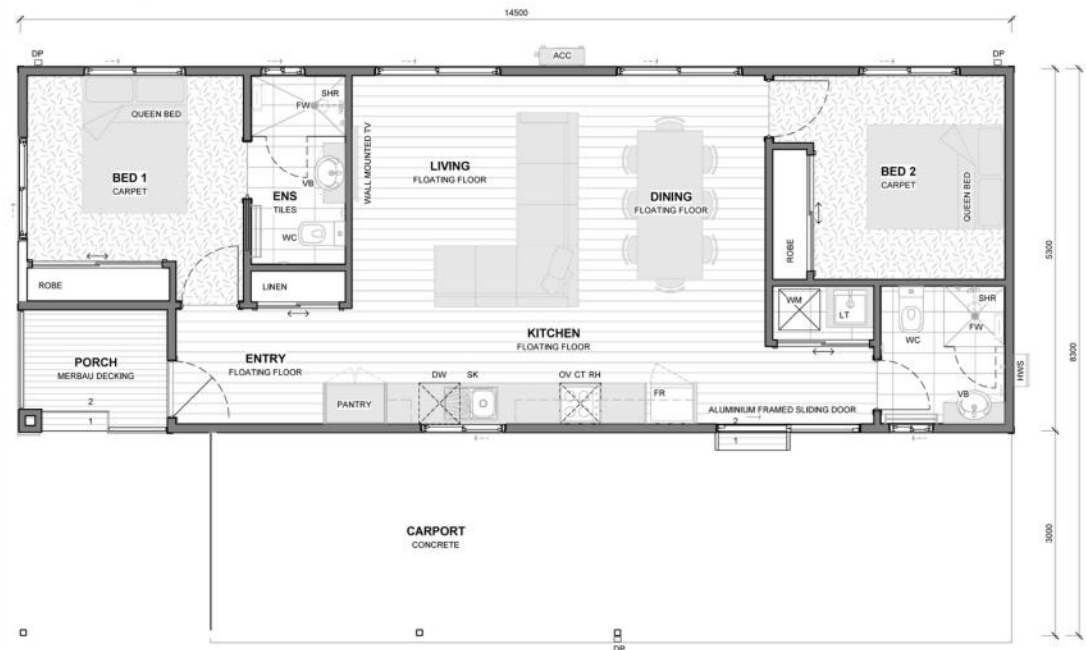
A




B



C



 Copyright © 2024 by Yarrowonga Manufactured Housing Pty Ltd

\* These are the External Colourway Options for this floorplan - **A, B or C**



ALBURY GARDENS LIFESTYLE ESTATE  
by LINCOLN PLACE

# THE EDGEWATER

3 BEDROOM FLOORPLAN



ALBURY GARDENS LIFESTYLE ESTATE

by LINCOLN PLACE

DESIGNED & BUILT BY YARRAWONGA MANUFACTURED HOUSING PTY LTD



# THE EDGEWATER

3 BEDROOM FLOORPLAN

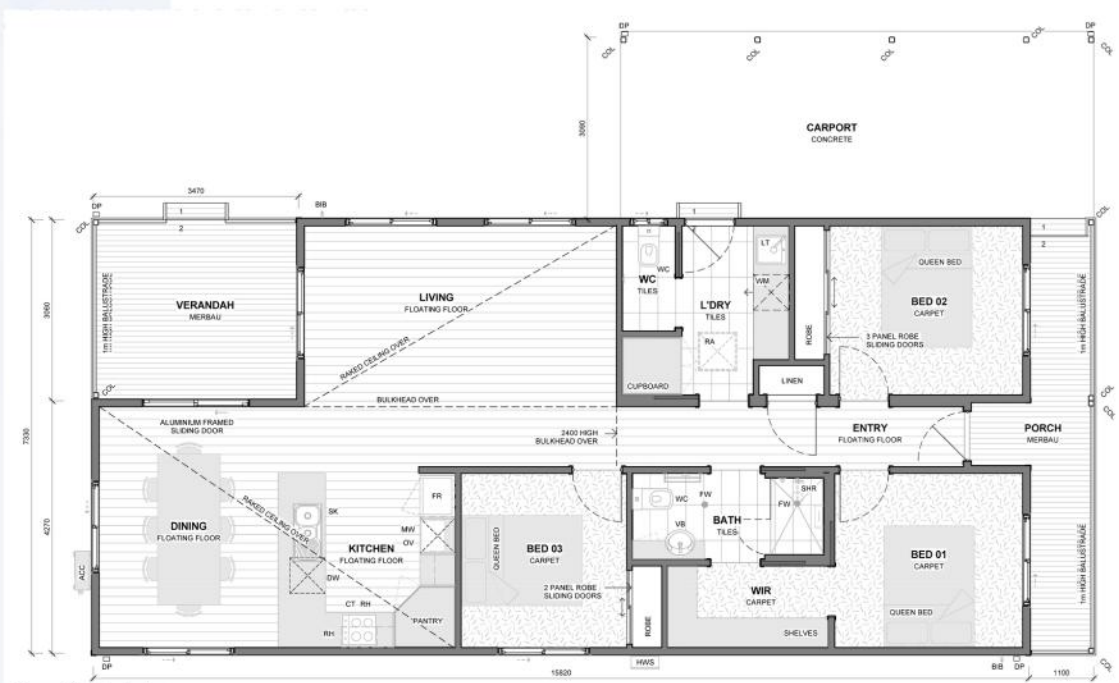
A




B



C



 Copyright © 2024 by Yarrawonga Manufactured Housing Pty Ltd



ALBURY GARDENS LIFESTYLE ESTATE

by LINCOLN PLACE

\* These are the External Colourway Options for this floorplan - **A, B or C**

# THE LATITUDE

2 BEDROOM FLOORPLAN



ALBURY GARDENS LIFESTYLE ESTATE

by LINCOLN PLACE

DESIGNED & BUILT BY YARRAWONGA MANUFACTURED HOUSING PTY LTD



A



B

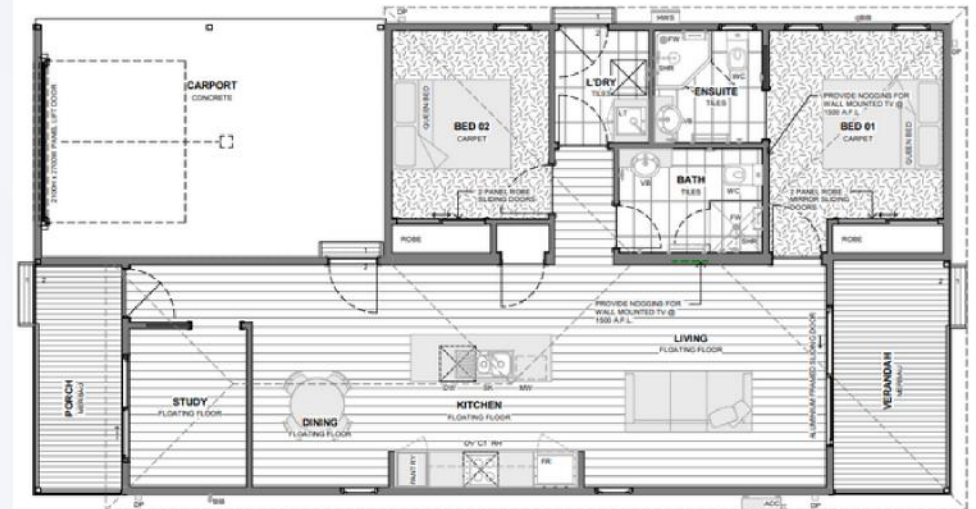


C



# THE LATITUDE

## 2 BEDROOM FLOORPLAN



Copyright © 2024 by Yarrawonga Manufactured Housing Pty Ltd

\* These are the External Colourway Options for this floorplan - **A, B or C**



ALBURY GARDENS LIFESTYLE ESTATE

by LINCOLN PLACE

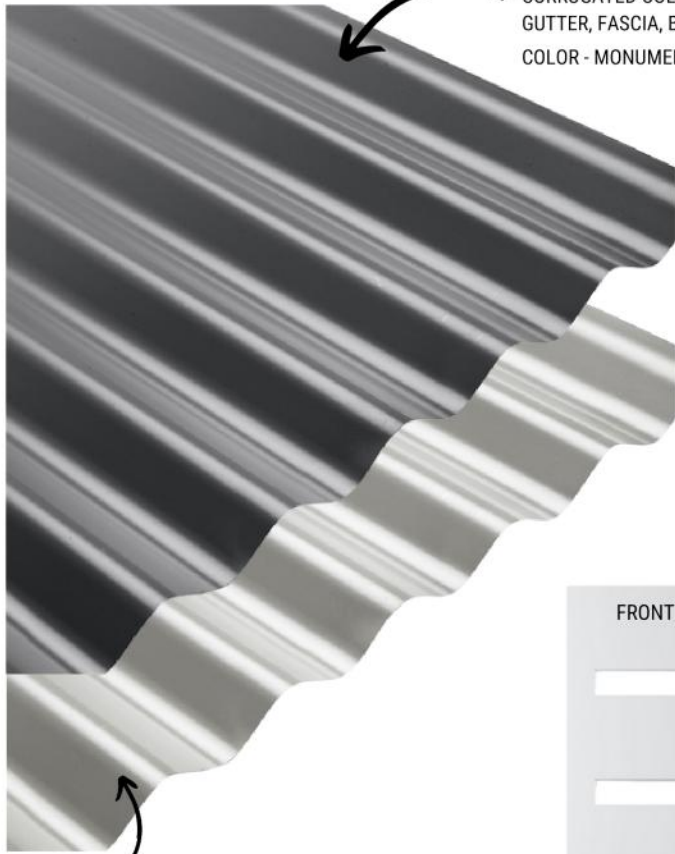


EXTERNAL  
COLOURWAYS  
A B C



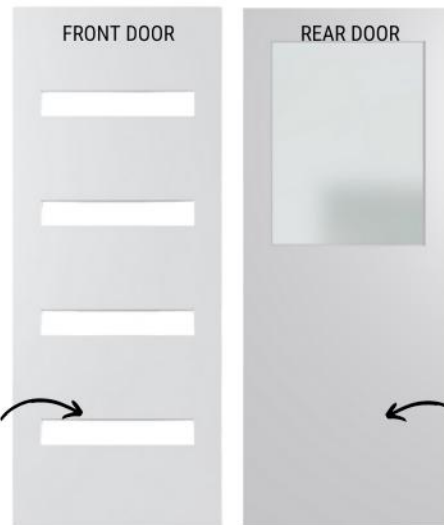
# EXTERNAL COLOURWAY **A**

**Colorbond®**  
CORRUGATED COLORBOND ROOF SHEETING + DOWNPIPES,  
GUTTER, FASCIA, BASEBOARDS,  
COLOR - MONUMENT



**Colorbond®**  
BALUSTRADES, VERANDAH POSTS,  
ALL WINDOWS | ALL SLIDING DOORS  
AWNING- SPRING DESIGN  
COLOR - SHALE GREY

**CORINTHIAN DOORS**  
FRONT DOOR  
Corinthian PMAD104 | Clear Glass  
HAYMES PAINT | GREYOLOGY 4



**REAR DOOR**  
Hume XF3 | Clear Glass  
HAYMES PAINT | GREYOLOGY 4

**Colorbond®**  
HORIZONTAL COLORBOND CUSTOMORB  
WALL CLADDING  
COLOR - MONUMENT



**JamesHardie**  
SYCON AXON CLADDING  
HAYMES PAINT | GREYOLOGY 4



**JamesHardie**  
PRIMELINE CLADDING  
(ONLY IF INCL. WITH FLOORPLAN  
CHOSEN BY RESIDENT)  
HAYMES PAINT | GREYOLOGY 4



**Haymes PAINT**  
HAYMES PAINT | GREYOLOGY 4



MERBAU DECKING  
FRONT PORCH & ALFRESCO AREA

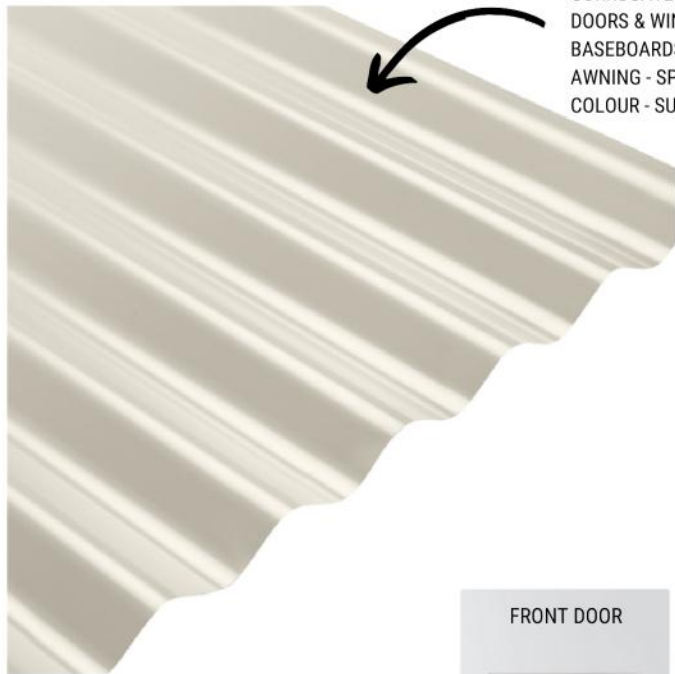
MONUMENT

SHALE GREY

GREYOLOGY 4

MERBAU DECKING

# EXTERNAL COLOURWAY **B**



**Colorbond®**  
 CORRUGATED COLORBOND ROOF SHEETING, ALL SLIDING  
 DOORS & WINDOWS, DOWNPIPES, GUTTER, FASCIA,  
 BASEBOARDS, VERANDAH POSTS, BALUSTRADES  
 AWNING - SPRING DESIGN  
 COLOUR - SURFMIST



HAYMES PAINT | MINIMALIST 7



**Colorbond®**  
 HORIZONTAL COLORBOND CUSTOMORB  
 WALL CLADDING  
 COLOR - SURFMIST



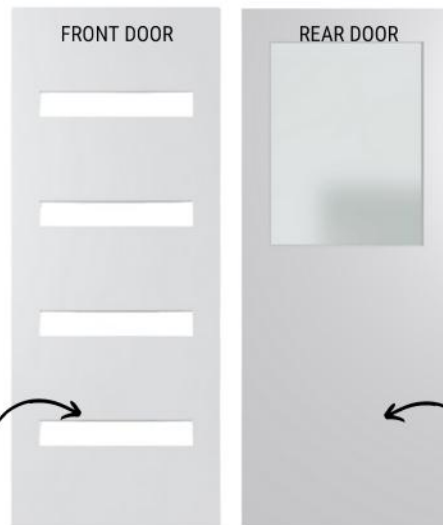
**JamesHardie**  
 SYCON AXON CLADDING  
 HAYMES PAINT | MINIMALIST 7



**JamesHardie**  
 PRIMELINE CLADDING  
 (ONLY IF INCL. WITH FLOORPLAN  
 CHOSEN BY RESIDENT)  
 HAYMES PAINT | MINIMALIST 7



MERBAU DECKING  
 FRONT PORCH & ALFRESCO AREA



**CORINTHIAN  
 DOORS**  
 FRONT DOOR  
 Corinthian PMAD104 | Clear Glass  
 HAYMES PAINT | MINIMALIST 7



REAR DOOR  
 Hume XF3 | Clear Glass  
 HAYMES PAINT | MINIMALIST 7

SURFMIST

BASALT

MINIMALIST 7

MERBAU DECKING

# EXTERNAL COLOURWAY C

## Colorbond®

CORRUGATED COLORBOND ROOF SHEETING, ALL SLIDING DOORS & WINDOWS, DOWNPIPES, GUTTER, FASCIA, BALUSTRADES AND VERANDAH POSTS  
AWNING - SPRING DESIGN  
COLOR - SURFMIST



**Colorbond®**  
BASEBOARDS  
COLOR - BASALT



HAYMES PAINT | SILVER DAWN



## Colorbond®

HORIZONTAL COLORBOND CUSTOMORB  
WALL CLADDING  
\*ONLY IF INCLUDED WITH FLOORPLAN CHOSEN  
COLOR - BASALT



SURFMIST



## JamesHardie

SYCON AXON CLADDING  
HAYMES PAINT | SILVER DAWN



## JamesHardie

PRIMELINE CLADDING  
(ONLY IF INCL. WITH FLOORPLAN CHOSEN BY RESIDENT)  
HAYMES PAINT | SILVER DAWN



BASALT

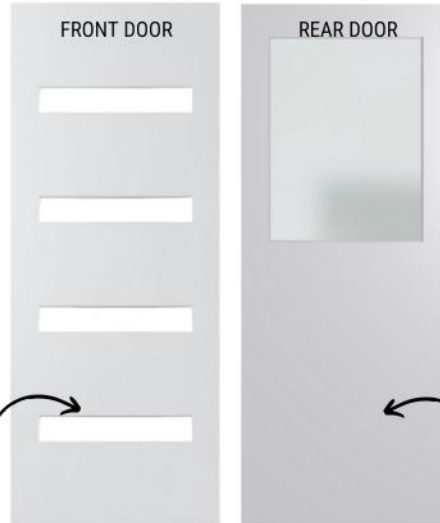


MERBAU DECKING  
FRONT PORCH & ALFRESCO AREA

SILVER DAWN

FRONT DOOR

REAR DOOR



## CORINTHIAN DOORS

FRONT DOOR  
Corinthian PMAD104 | Clear Glass  
HAYMES PAINT | SILVER DAWN



REAR DOOR  
Hume XF3 | Clear Glass  
HAYMES PAINT | SILVER DAWN



Copyright © 2024 by Yarrawonga Manufactured Housing Pty Ltd

MERBAU DECKING



INTERNAL  
COLOURWAYS  
1 2 3 4

# INTERNAL COLOURWAY 1



*Classic & Calming*



LANTIC SATIN WHITE 100 X 300 mm tiles | WET AREAS SPLASHBACK

WHITE MATT 300 x 600 mm tiles | SHOWER WALL TILE

ASTRA SILVER MATT 300 x 600 mm tiles | WET AREAS FLOOR TILE

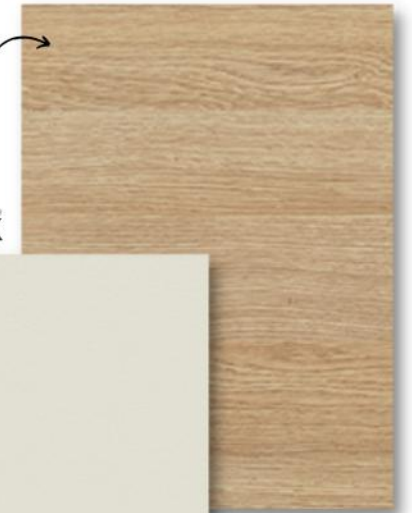


**SHAW**  
Performance Products

Karma Blockout Blind  
Colour: Moonscape

Joinery | Upper Cabinets  
LAMINEX Classic Oak Natural  
Finish #8537

**Laminex**



Joinery | Lower Cabinets  
LAMINEX Sarsen Grey Natural  
Finish #320

**Laminex**



**Haymes**  
PAINT

Walls - Grey Shadow  
Skirts, Archs, Internal Doors -  
Grey Shadow - SEMI GLOSS



**redbook**  
CARPETS

SKYWAY CARPET | CUT PILE TWIST  
COLOUR - 90 SMOKE HAZE

**Laminex**

Benchtop | Rolled Edge  
LAMINEX Avenza Bianco  
Natural Finish #148



**Titan**

HYBRID LAMINATE FLOORING  
SANDBLASTED BLACKBUTT TIR180



# INTERNAL COLOURWAY 1

*Classic & Calming*

Internal Colourway 1				
<b>LOCATION</b>	Kitchen Bathroom Ensuite	Laundry	Bathroom Ensuite Laundry	Bathroom Ensuite
<b>FLOOR or WALL</b>	Splashback	Splashback	Floor	Wall (Shower)
<b>TILE CODE</b>	JK0080	JK0080	JK0340	JK3095
<b>TILE COLOUR</b>	LANTIC SATIN WHITE	LANTIC SATIN WHITE	ASTRA SILVER MATT	WHITE MATT
<b>GROUT COLOUR</b>	200 White	200 White	241 Misty Grey	200 White
<b>SILICONE COLOUR</b>	Pasco   Off White	Pasco   Off White	Pasco   Chalk	Pasco   Off White
<b>LAYOUT</b>	Stackbond (Vertical)	Stackbond (Vertical)		Stackbond (Horizontal)

## TILE COLOUR SELECTIONS

All splashbacks & Shower Wall

Bathroom, Ensuite & Laundry Floor

## GROUT + SILICONE SELECTIONS

GROUT WHITE + SILICONE OFF WHITE



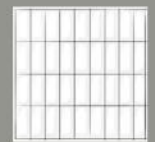
## GROUT + SILICONE SELECTIONS

GROUT MISTY GREY SILICONE CHALK



## TILE LAYOUT SELECTIONS

VERTICAL STACKBOND  
Splashback Layout in  
KITCHEN, BATHROOM,  
ENSUITE & LAUNDRY



HORIZONTAL  
STACKBOND  
SHOWER WALL



\*COLOURS DISPLAYED SHOULD BE USED AS A GUIDE FOR YOUR COLOUR SELECTION.



Copyright © 2024 by Yarrawonga Manufactured Housing Pty Ltd

# INTERNAL COLOURWAY 2

*Modern & Industrial*



PRESSED EDGE WHITE MATT 100 X 300 MM TILES | WET AREAS SPLASHBACK

ATLAS GREY 300 X 600 MM TILES | WET AREAS FLOOR TILE

REGINA CHARCOAL MATT TILE 300 X 600 MM | WET AREA FLOOR TILE



**SHAW**  
Performance Products  
Karma Blockout Blind  
Colour: Cliff

Joinery | Lower Cabinets  
LAMINEX Chalk White  
Natural Finish #8524

Joinery | Upper Cabinets  
LAMINEX Terril  
Natural Finish #2297

**Laminex**

**Laminex**

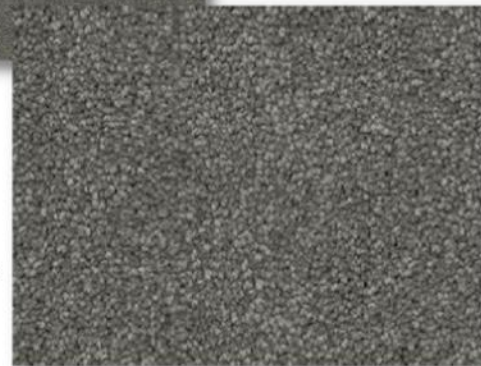


**Titan**  
HYBRID LAMINATE FLOORING  
MOONLIGHT GUM TIR182



**Haymes**  
PAINT  
Walls - Grey Shadow  
Skirts, Archs, Internal Doors -  
Grey Shadow - SEMI GLOSS

**redbook**  
CARPETS  
SKYWAY CARPET | CUT PILE TWIST  
COLOUR - 95 GREY SKY



**Laminex**  
Benchtop | Rolled Edge  
LAMINEX Neo Cloud  
Natural Finish #6314



# INTERNAL COLOURWAY 2

*Modern & Industrial*

Internal Colourway 2				
<b>LOCATION</b>	Kitchen Bathroom Ensuite	Laundry	Bathroom Ensuite Laundry	Bathroom Ensuite
<b>FLOOR or WALL</b>	Splashback	Splashback	Floor	Wall (Shower)
<b>TILE CODE</b>	JK0080	JK0080	JK0340B	JK0340
<b>TILE COLOUR</b>	LANTIC SATIN WHITE	LANTIC SATIN WHITE	ASTRA CHARCOAL MATT	ASTRA SILVER MATT
<b>GROUT COLOUR</b>	200 White	200 White	287 Charred Ash	287 Charred Ash
<b>SILICONE COLOUR</b>	Pasco   Off White	Pasco   Off White	Pasco   Slate Grey	Pasco   Slate Grey
<b>LAYOUT</b>	Stackbond (Vertical)	Stackbond (Vertical)		Stackbond (Horizontal)

## TILE COLOUR SELECTIONS

All splashbacks &  
Shower Wall

Bathroom, Ensuite  
& Laundry Floor

## GROUT + SILICONE SELECTIONS

GROUT WHITE +  
SILICONE OFF WHITE



## GROUT + SILICONE SELECTIONS

GROUT CHARRED ASH  
SILICONE SLATE GREY



VERTICAL STACKBOND  
Splashback Layout in  
KITCHEN, BATHROOM,  
ENSUITE & LAUNDRY



HORIZONTAL  
STACKBOND  
SHOWER WALL



\*COLOURS DISPLAYED SHOULD BE USED AS A GUIDE FOR YOUR COLOUR SELECTION.



Copyright © 2024 by Yarrawonga Manufactured Housing Pty Ltd



# INTERNAL COLOURWAY 3

*Fresh & Contemporary*



PRESSED EDGE WHITE MATT 100 X 300 MM TILES | WET AREAS SPLASHBACK

RECTIFIED WHITE MATT 300 X 600 MM TILES | SHOWER WALL TILE

ATLAS LATTE MATT 300 X 600 MM TILES | WET AREA FLOOR TILE



**SHAW**  
Performance Products  
Karma Blockout Blind  
Colour: Sandstone

Joinery | Lower Cabinets  
LAMINEX Paper Bark  
Natural Finish #449

Joinery | Upper Cabinets  
LAMINEX Rural Oak  
Natural Finish #077

**Laminex**

**Laminex**



**Haymes**  
PAINT  
Walls - Dream  
Skirts, Archs, Internal Doors - Dream - SEMI GLOSS

**redbook**  
CARPET  
SKYWAY CARPET | CUT PILE TWIST  
COLOUR - SOURDOUGH

**Laminex**

Benchtop | Rolled Edge  
Pure Mineralstone  
Natural Finish #162



**Titan**  
HYBRID LAMINATE FLOORING  
STONEWASHED SPOTTED GUM TIR170

# INTERNAL COLOURWAY 3

*Fresh & Contemporary*

Internal Colourway 3				
<b>LOCATION</b>	Kitchen Bathroom Ensuite	Laundry	Bathroom Ensuite Laundry	Bathroom Ensuite
<b>FLOOR or WALL</b>	Splashback	Splashback	Floor	Wall (Shower)
<b>TILE CODE</b>	JK0080	JK0080	JK0018D	JK3095
<b>TILE COLOUR</b>	LANTIC SATIN WHITE	LANTIC SATIN WHITE	ROMAN GRIGIO MATT	WHITE MATT
<b>GROUT COLOUR</b>	200 White	200 White	277 Travertine	200 White
<b>SILICONE COLOUR</b>	Pasco   Off White	Pasco   Off White	Pasco   Travertine	Pasco   Off White
<b>LAYOUT</b>	Stackbond (Vertical)	Stackbond (Vertical)		Stackbond (Horizontal)

## TILE COLOUR SELECTIONS

All splashbacks &  
Shower Wall

Bathroom, Ensuite  
& Laundry Floor

## GROUT + SILICONE SELECTIONS

GROUT WHITE +  
SILICONE OFF WHITE



## GROUT + SILICONE SELECTIONS

GROUT TRAVERTINE  
SILICONE TRAVERTINE



## TILE LAYOUT SELECTIONS

VERTICAL STACKBOND  
Splashback Layout in  
KITCHEN, BATHROOM,  
ENSUITE & LAUNDRY



HORIZONTAL  
STACKBOND  
SHOWER WALL



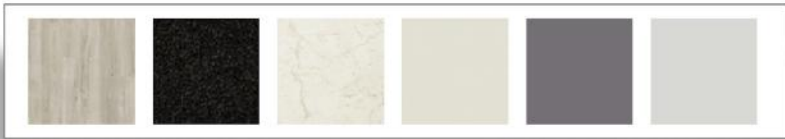
\*COLOURS DISPLAYED SHOULD BE USED AS A GUIDE FOR YOUR COLOUR SELECTION.



Copyright © 2024 by Yarrawonga Manufactured Housing Pty Ltd

# INTERNAL COLOURWAY 4

*Dark & Moody*



LANTIC GLOSS IVORY 100 X 300 MM TILES | WET AREAS SPLASHBACK

WHITE GLOSS 300 X 600 MM TILES | SHOWER WALL TILE

ASTRA CHARCOAL MATT 300 X 600 MM TILES | WET AREA FLOOR TILE



**SHAW**  
Performance Products  
Karma Blockout Blind  
Colour: Rock

Joinery | Lower Cabinets  
Terril Natural 2297

Joinery | Upper Cabinets  
Sarsen Grey Natural 320

Laminex®

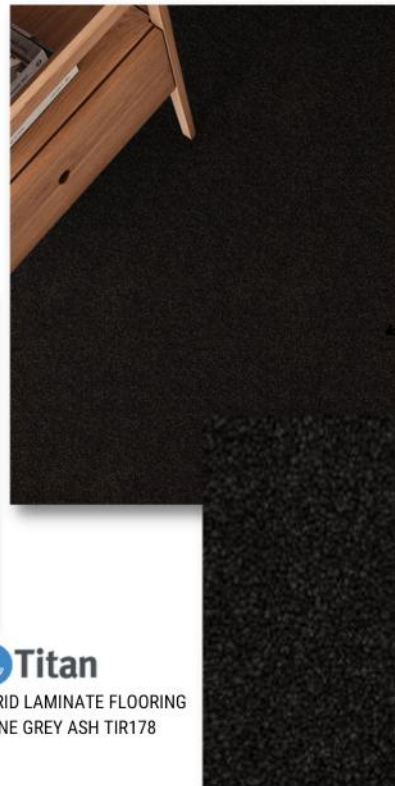
Laminex®

Laminex®

Benchtop | Rolled Edge  
White Valencia 742 Natural Finish



**Titan**  
HYBRID LAMINATE FLOORING  
ALPINE GREY ASH TIR178



**redbook**  
CARPET  
SKYWAY CARPET | CUT PILE TWIST  
COLOUR - 09 RAVEN



**Haymes**  
PAINT  
Walls - Grey Shadow  
Skirts, Archs, Internal Doors -  
Grey Shadow - SEMI GLOSS

# INTERNAL COLOURWAY 4

*Dark & Moody*

Internal Colourway 4				
<b>LOCATION</b>	Kitchen Bathroom Ensuite	Laundry	Bathroom Ensuite Laundry	Bathroom Ensuite
<b>FLOOR or WALL</b>	Splashback	Splashback	Floor	Wall (Shower)
<b>TILE CODE</b>	JK0075	JK0075	JK340B	JK3094
<b>TILE COLOUR</b>	LANTIC GLOSS IVORY	LANTIC GLOSS IVORY	ASTRA CHARCOAL MATT	WHITE   GLOSS
<b>GROUT COLOUR</b>	200 White	200 White	287 Charred Ash	200 White
<b>SILICONE COLOUR</b>	Pasco   Off White	Pasco   Off White	Pasco   Slate Grey	Pasco   Off White
<b>LAYOUT</b>	Stackbond (Vertical)	Stackbond (Vertical)		Stackbond (Horizontal)

## TILE COLOUR SELECTIONS

All splashbacks & Shower Wall

Bathroom, Ensuite & Laundry Floor

## GROUT + SILICONE SELECTIONS

GROUT WHITE + SILICONE OFF WHITE



## GROUT + SILICONE SELECTIONS

GROUT CHARRED ASH SILICONE SLATE GREY



## TILE LAYOUT SELECTIONS

VERTICAL STACKBOND  
Splashback Layout in  
KITCHEN, BATHROOM,  
ENSUITE & LAUNDRY



HORIZONTAL  
STACKBOND  
SHOWER WALL



\*COLOURS DISPLAYED SHOULD BE USED AS A GUIDE FOR YOUR COLOUR SELECTION.



Copyright © 2024 by Yarrawonga Manufactured Housing Pty Ltd



 **STANDARD  
INCLUSIONS  
+ UPGRADE  
OPTIONS**



# STANDARD RANGE



SHOWER ROSE & RAIL



BATHROOM BASIN



SHOWER TAPWARE

ROBE HOOK (SINGLE)



BASIN TAPWARE

TOILET ROLL HOLDER



CEILING FAN



DOUBLE BOWL SINK



SHOWER SHELF



KITCHEN & TROUGH TAPWARE



POP UP WASTE (OVERFLOW)



MATT SILVER TRIM



SQUARE GRATE | WASTE



LAUNDRY TROUGH



TOWEL RAIL 600MM

ENTRANCE KEY-IN-LEVER SET



PASSAGE SLIDING CAVITY SET



PRIVACY SLIDING CAVITY SET



JOINERY DOOR KNOBS



DOOR CUSHION



HINGE



# UPGRADE BUNDLE FIXTURES & FITTINGS



SHOWER ROSE & RAIL



SHOWER TAPWARE



BASIN TAPWARE



CEILING FAN



TOWEL RING



ROBE HOOK (SINGLE)



TOILET ROLL HOLDER



ROUND BLACK BASIN



SHOWER SHELF



KITCHEN DOUBLE BOWL SINK



PLUG & WASHERS



SQUARE GRATE | WASTE



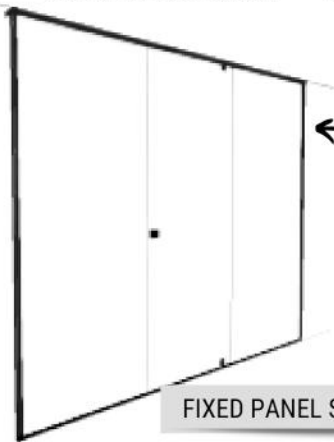
SINK/TROUGH TAPWARE



LAUNDRY TROUGH



TOWEL RAIL 600MM



FIXED PANEL SHOWER SCREEN



MATT BLACK TRIM

ENTRANCE KEY-IN-LEVER SET



PRIVACY SLIDING CAVITY SET



PASSAGE SLIDING CAVITY SET



JOINERY DOOR KNOBS



DOOR CUSHION



HINGE





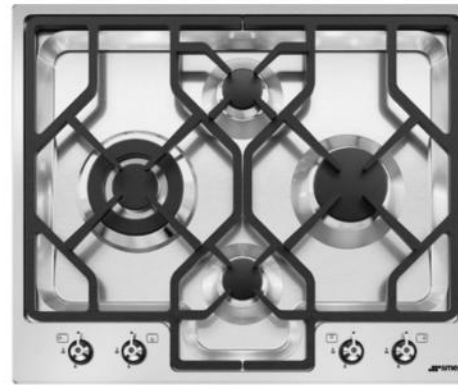
# LUXE KITCHEN APPLIANCE BUNDLE



60CM STAINLESS STEEL  
FREESTANDING DISHWASHER



60CM STAINLESS STEEL  
BUILT IN OVEN



60CM STAINLESS STEEL  
CLASSIC HOB



60CM STAINLESS STEEL  
UNDER MOUNT RANGEHOOD





# LUXE KITCHEN APPLIANCE BUNDLE



**Westinghouse**



**Westinghouse**

60CM STAINLESS STEEL  
FREESTANDING DISHWASHER



**Westinghouse**

60CM STAINLESS STEEL  
BUILT IN OVEN



**Westinghouse**

60CM STAINLESS STEEL  
CLASSIC HOB



**Westinghouse**

60CM STAINLESS STEEL  
UNDER MOUNT RANGEHOOD



## ENVIRONMENTALLY FRIENDLY CHOICES



Double Glazed Windows



Underfloor Insulation



Solar PV System 3.6kw



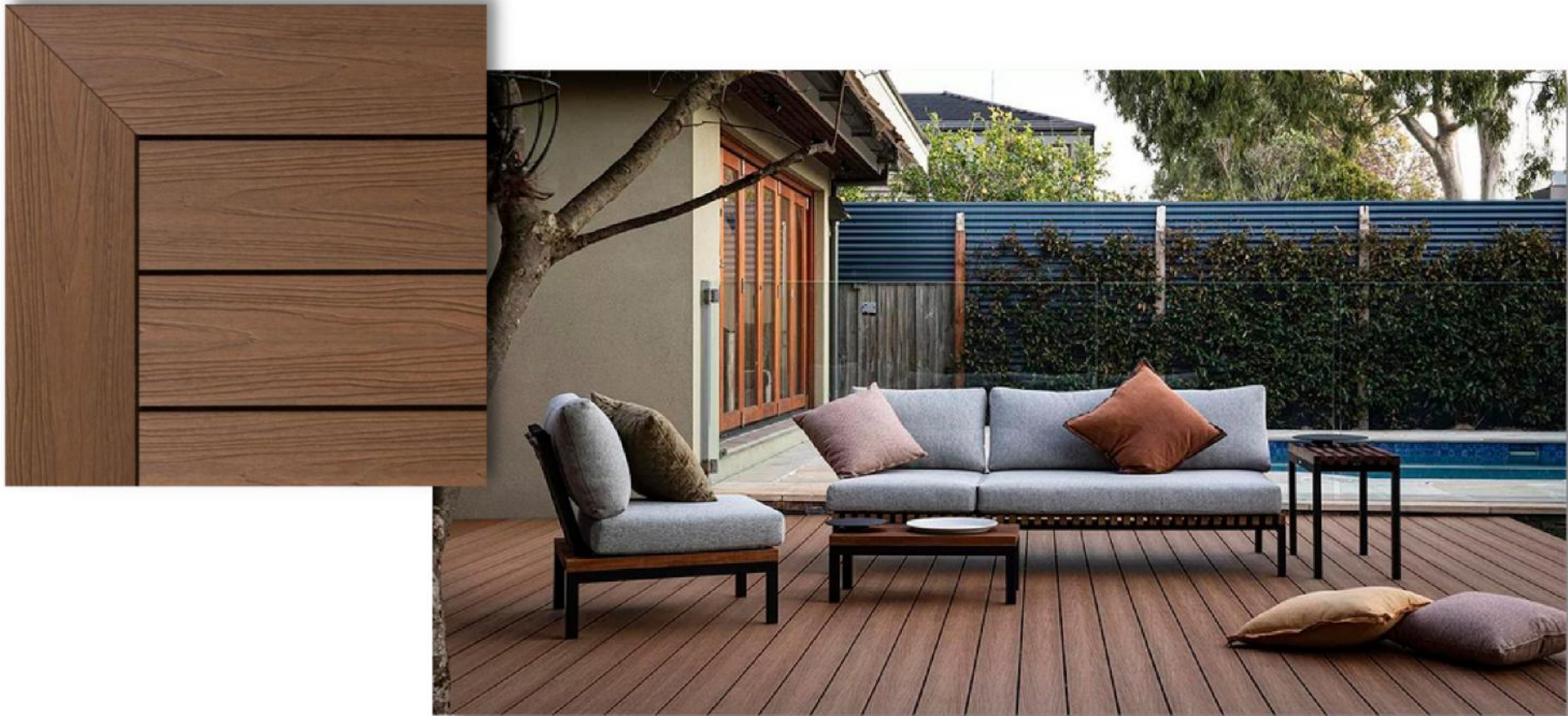
# UPGRADE DECKING



PLEASE NOTE

**ALL EXTERNAL COLOURWAYS A,B & C  
WILL HAVE EKODECK LEATHERWOOD - DESIGNER SERIES**

---



\*Example of Ekodeck Designer Series LEATHERWOOD



# UPGRADE JOINERY

2-PAC SHAKER JOINERY THROUGHOUT RESIDENCE



\*Example of 2-Pac Shaker Joinery

INTERNAL COLOURWAY

1

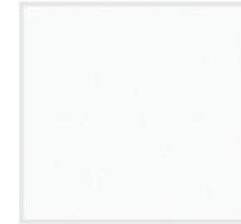
LAMINEX - **Sarsen Grey** 320



INTERNAL COLOURWAY

2

LAMINEX - **Chalk White** 8524



INTERNAL COLOURWAY

3

LAMINEX - **Paper Bark** 449



INTERNAL COLOURWAY

4

LAMINEX - **Sarsen Grey** 320





# UPGRADE BENCHTOPS



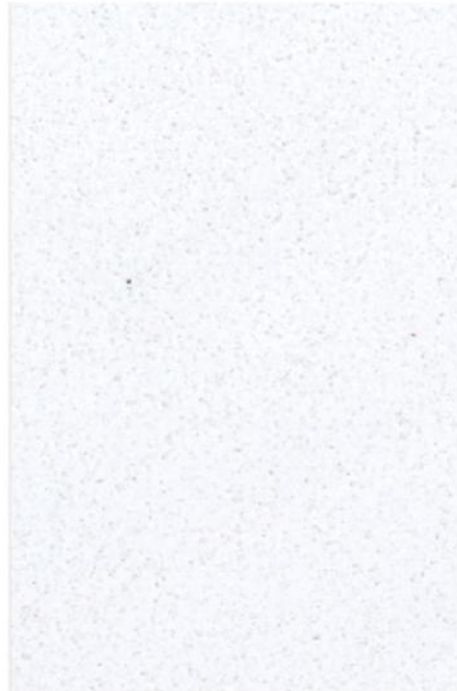
INTERNAL COLOURWAY **1**

STONE AMBASSADOR | **SUGAR RUSH**



INTERNAL COLOURWAY **2**

STONE AMBASSADOR | **WHITE BURST**



INTERNAL COLOURWAY **3**

STONE AMBASSADOR | **SPARKLING WHITE**



INTERNAL COLOURWAY **4**

STONE AMBASSADOR | **MOTTLE GREY**





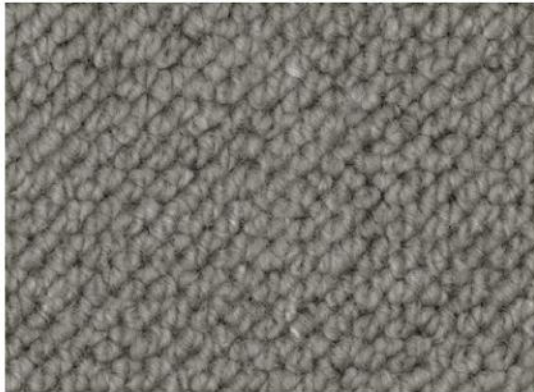
# UPGRADE CARPET

INTERNAL COLOURWAY

1



93 BLUESTONE



INTERNAL COLOURWAY

2



92 PEPPER



INTERNAL COLOURWAY

3



13 EARTH



INTERNAL COLOURWAY

4



94 ASH



As seen on Feltex Carpets website





# CONCERTINA VINYL Folding Doors



PLEASE NOTE

**ALL** INTERNAL COLOURWAYS 1, 2, 3 and 4  
WILL HAVE **WHITE** CONCERTINA VINYL FOLDING DOORS.



\*EXAMPLE **ONLY** OF CONCERTINA VINYL FOLDING DOORS





YARRAWONGA MANUFACTURED HOUSING PTY LTD

---

TOURISM • LIFESTYLE • COMMERCIAL

*Follow Us*



ALBURY GARDENS LIFESTYLE ESTATE

*by* LINCOLN PLACE





# External & Internal Colourway Sign-Off Sheet

Project Name **Albury Gardens Lifestyle Estate by Lincoln Place**  
YMH Client Support Coordinator **Jenna McLeod**  
YMH Colour Consultant **Bree Tresize**

In an effort to streamline the Colour Selection process, Yarrawonga Manufactured Housing Pty Ltd requires an approval of the submitted External and Internal Colourways. Before signing, please review all colourways and make note of any changes that should be addressed before approved. Some notable factors to take into consideration before approving are as follows :-

An authorised signature below indicates the approval of the external and internal colourways for this project.

CLIENT SIGNATURE .....

DATE .....

YMH CLIENT SUPPORT COORDINATOR .....

DATE .....

YMH COLOUR CONSULTANT .....

DATE .....