

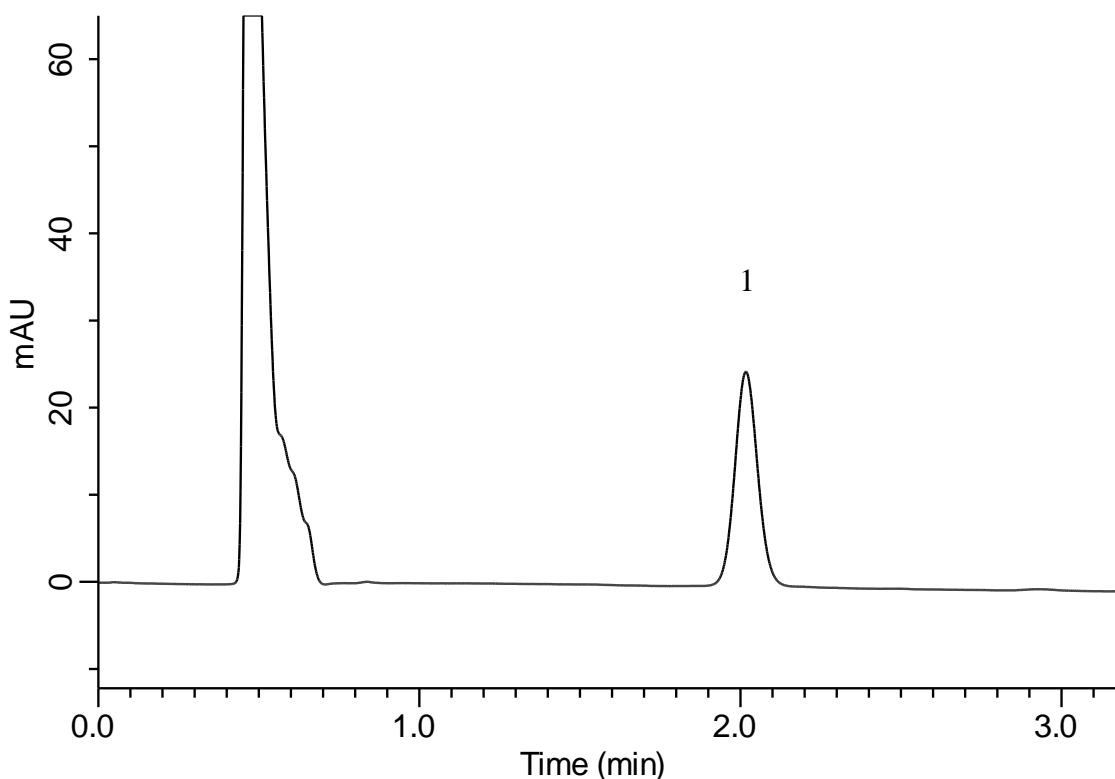
InertSearch for LC

Inertsil Applications

Analysis of Rosuvastatin calcium

(Under the condition of the Japanese Pharmacopoeia (JP))

Data No. LB669-0696



Conditions

System : GL7700 HPLC system
Column : InertSustainSwift C18
(5 μ m 50 x 4.6 mm I.D.)
Column Cat. No. : 5020-88023
Eluent : H₂O/ CH₃CN/ H₃PO₄ = 600/400/1, v/v/v (premix)
Flow Rate : 1.25 mL/min
Col. Temp. : 25 °C
Detection : UV 242 nm (PD7752 PDA Detector)
Injection Vol. : 20 μ L
Sample : Standard

Analyte:

1. Rosuvastatin calcium 2.5 mg/L

	GLS	JP
Retention time (min)	2.02	approx. 2
Theoretical plate numer (N)	3,831	\geq 1,900
Tailing factor	1.07	1.0 – 1.4