



1540 TUNSTALL BLVD
Bowen Island



Tim Rhodes
REALTOR®







Primary Bedroom





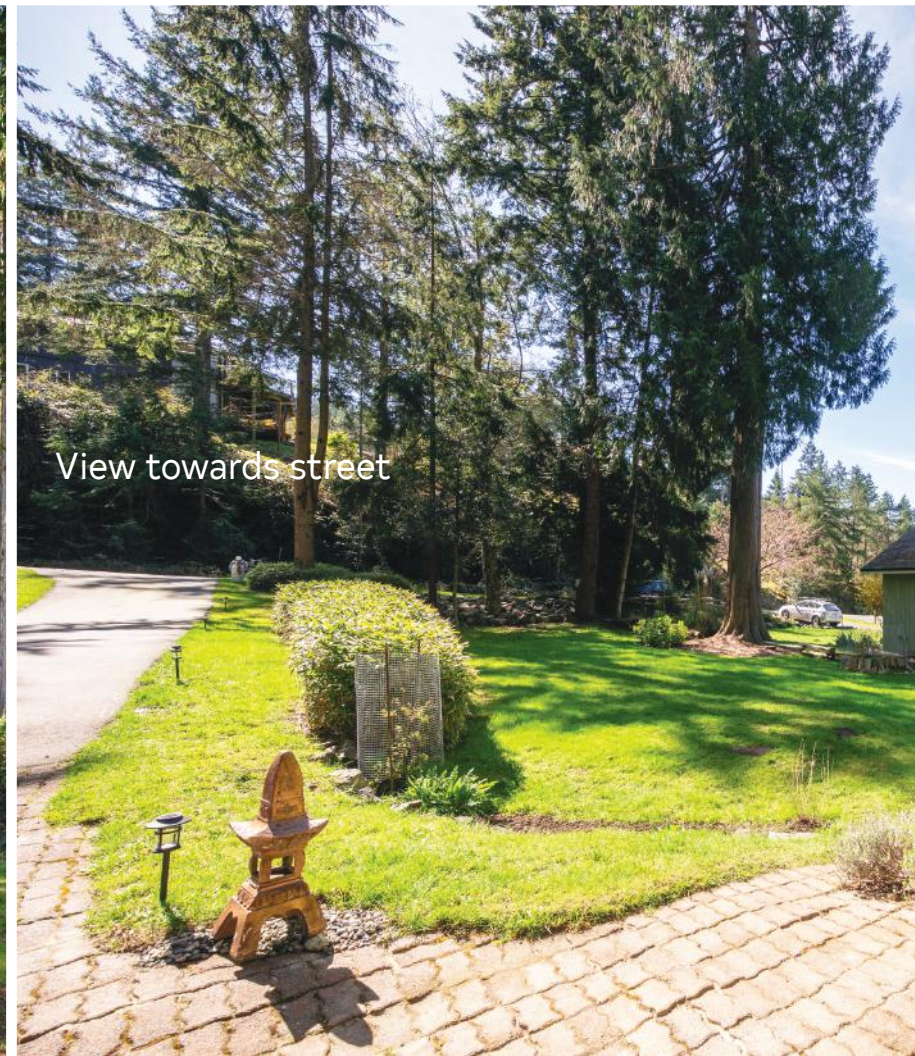
Sauna



Private patio

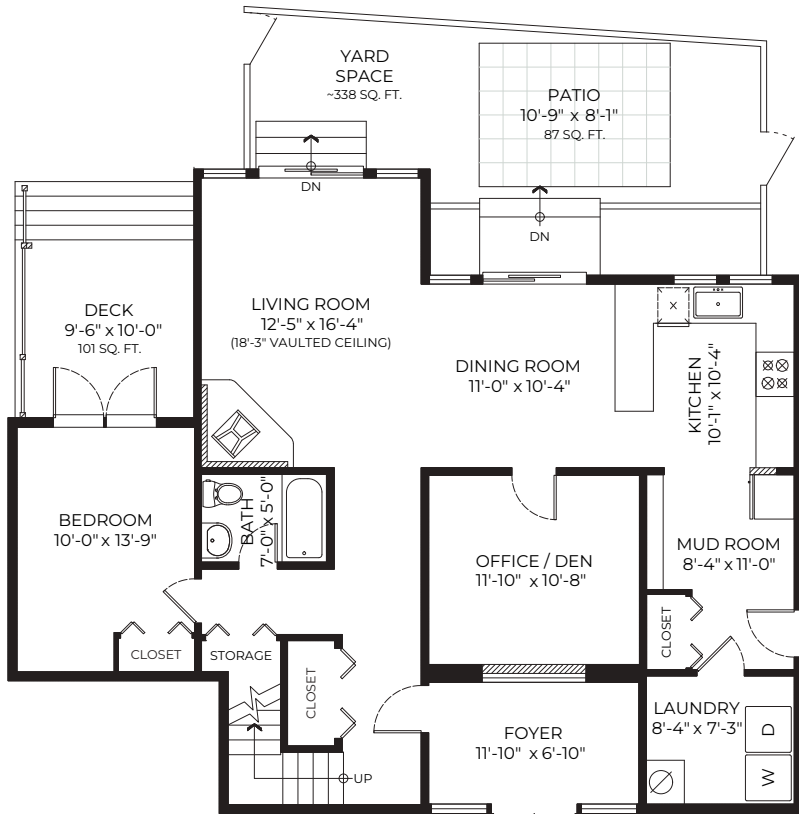


View from street



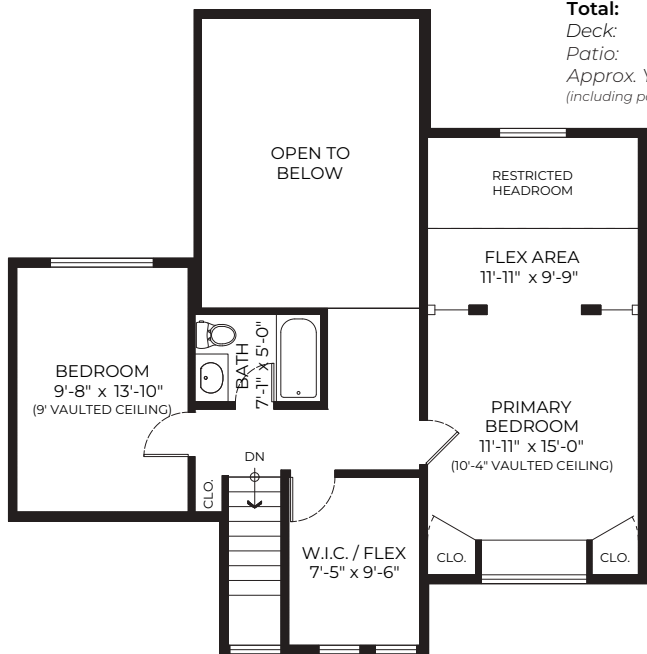
View towards street

1540 TUNSTALL BLVD | Bowen Island | 1918 SF | 3-4 Beds | Den | 2 Baths | 0.25 Acres



MAIN FLOOR PLAN
Ceiling Height: 8'-0"

Upper Floor: 652 SQ. FT.
Main Floor: 1266 SQ. FT.
Total: 1918 SQ. FT.
Deck: 101 SQ. FT.
Patio: 87 SQ. FT.
Approx. Yard: 338 SQ. FT.
(including patio space)



UPPER FLOOR PLAN



Tunstall Bay Community Association

The TBCA Welcomes You
get connected with your community

Friend, neighbour or future member?

The Benefits of Membership

Tunstall Bay has been "the place" for recreation on Bowen Island for over 50 years. With an ocean-side clubhouse, swimming pool and recently renovated tennis & pickleball courts, where else would you want to spend time with family, friends and neighbours?

- Swimming
- Tennis & Pickleball
- Buoys & Boat House
- Member Events

MEASUREMENTS ARE APPROXIMATE AND MAY NOT BE TO SCALE.
THE FLOOR PLAN ILLUSTRATION IS NOT SUITABLE FOR CONSTRUCTION/ARCHITECTURAL PURPOSES. E&O INSURED.

Although this information has been received from sources deemed reliable, we assume no responsibility for its accuracy, and without offering advice, make this submission to prior sale or lease, change in price or terms, and withdrawal without notice.



Tim Rhodes
REALTOR®

604-341-9488
tim@rhodesonbowen.com
RHODES ON BOWEN REAL ESTATE

