

INDIA - UAE - ITALY



GLAZE PLUS[®]
UNLEASHING THE TRUE BEAUTY OF MARBLE



GLAZE PLUS CATALOGUE

Beyond Products We Deliver Solutions...



GLAZEPLUS



GLAZE PLUS®

UNLEASHING THE TRUE BEAUTY OF MARBLE

www.glazeplus.in

sales@glazeplus.in





Enhancing Homes with Excellence in Your Homes **SINCE 2002**

What sets Glaze Plus apart from the competition is not just our commitment to quality, but our deep understanding of the unique challenges faced by those in the stone industry. We comprehend that stone surfaces, be it marble, granite, or any other type, require specialized care to retain their timeless beauty. Our extensive range of products is meticulously formulated to address these specific needs, making stone care a hassle-free experience for our clients. At Glaze Plus, we take pride in offering a comprehensive product range that caters to all aspects of stone care. Whether you are a contractor working on a grand architectural project or a homeowner looking to preserve the luster of your stone surfaces, we have the solution for you. Our product catalog boasts an array of offerings, including:

- Epoxy Gel
- Granite Cleaner & Cement Remover
- Shiner
- Mastic & Hardener
- Super Darkner
- Polishing Pads

***Advanced stone care solutions
built on innovation, durability,
and trust!***

GLAZEPLUS

ABOUT US

GLAZEPLUS is a leading specialist in the treatment and maintenance of Italian marble.

Our commitment to quality and innovation ensures your surfaces are protected and enhanced to reveal the timeless beauty of Italian marble. With expertise tailored to the unique demands of natural stone, we bring out the best in luxury and durability.

Expert Stone Care Solutions

Innovation in surface protection since 2002



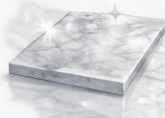
Marble Treatment

Specialist treatments to protect marble surfaces



Surface Protection

Advance repellents to surface tony most scars and moisture



Polishing & Restoration

Profession polishing and maintenance for radiant marble a crillance.

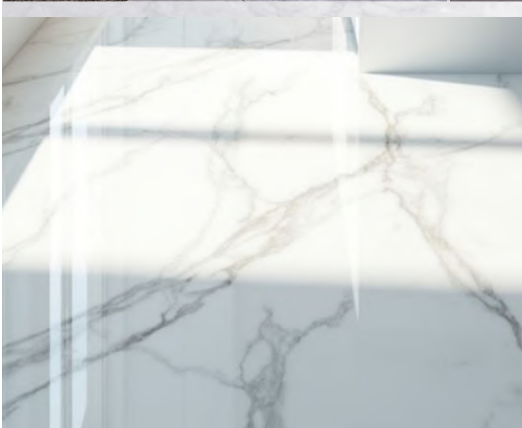
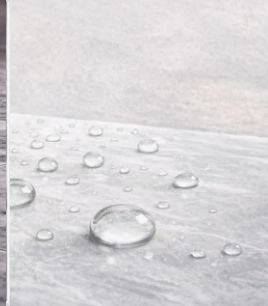


Advanced Sealants

High performance sealants for long-lasting protection.



- Manufacturer of stone care & construction chemicals
- Trusted since 2002
- Used by professionals
- Quality-driven



**We Make Difference
in Your Homes
SINCE 2002**



OUR PRODUCT RANGE

01 ADHESIVE SOLUTIONS

02 EPOXY SOLUTIONS

03 WATER PROOFING SOLUTIONS

04 POLISHING SOLUTIONS

05 EPOXY GROUT SOLUTIONS

06 CLEANING SOLUTIONS

07 STONE BONDING SOLUTIONS

08 POLYESTER BASE SOLUTIONS

09 PROTECTION SOLUTIONS

10 LITHIUM BASED DENSIFYING SOLUTIONS

Advanced Technologies for Stronger, Cleaner & Longer-Lasting Surfaces





High Strength Tile Adhesive Solutions



ADHESIVE SOLUTIONS

GlazePlus Adhesives are designed for exceptional bonding strength, durability, and versatility. Whether working with stone, ceramic, concrete, or metal, our high-performance adhesives ensure long-lasting, reliable results. Trusted by professionals and homeowners alike, GlazePlus Adhesives make every bond

GLAZE PLUS



(C1T)



SCAN FOR MORE INFORMATION

GLAZEFIX1100

Properties

- High adhesion strength
- Easily trowellable

Field of application

For bonding of small and medium sized floor and wall ceramic tiles, marbles, natural stones, travertine and decorative brickson cementitious renders, cementitious screeds and concrete.

In compliance with TS EN 12004-1:2017 C1T standards. IS 15477 : 2019 (TYPE 2)

Color: Grey

Pack Size: 20| 40Kg

GLAZEFIX110

Polymer modified cementitious tile adhesive for fixing Ceramic tiles, Porcelain tiles, Vitrified low thickness tiles, marbles of small formats on kitchen, Bathroom and Corridor area. For internal and external use both horizontally and vertically.

Features:

- Tile on tile application
- Long open time slip resistance

In compliance with TS EN 12004-1:2017 C1TE standards.

IS 15477 : 2019 (TYPE 2)

(C1TE)



SCAN FOR MORE INFORMATION

Color: Grey| White
Pack Size: 20| 40Kg

GLAZE PLUS

(C2T)



Color: Grey| White
Pack Size: 20| 40Kg



SCAN FOR MORE INFORMATION

GLAZEFIX105

Application

Indoors and outdoors, vertical and horizontal applications, Can be used for bonding of tiles, ceramics and fine marbles in areas of building such as kitchens, bathrooms and corridors.

In compliance with TS EN 12004 - 1:2017 C2T standards. IS 15477 : 2019 (TYPE 3)

GLAZEFIX111

Polymer Modified high performance cementitious adhesive suitable for all kind of climate conditions with high adhesive performance, long lasting feature and flexibility for internal and external wall cladding. For ceramic tiles, vitrified tiles, granite window frame thin porcelain tiles natural stones press bricks and glass mosaics for light and dark coloured natural stones.

Features:

- Mixed only with water
- Does not slip in vertical applications.

In compliance with TS EN 12004 - 1:2019 C2TE Flex standards. IS 15477 : 2019 (TYPE 3)



SCAN FOR MORE INFORMATION

(C2TE)



Color: Grey| White
Pack Size: 20| 40Kg

GLAZE PLUS

(C2TE(S1))



Color: Grey | White
Pack Size: 20 | 40Kg



SCAN FOR MORE INFORMATION

GLAZEFIX1111

GLAZEFIX 1111 is a high-performance, cement- and polymer-modified flexible tile adhesive with reduced slip and extended open time. Designed for indoor and outdoor use, it delivers strong, reliable bonding for ceramic tiles, porcelain tiles, and natural stone on walls and floors—even in demanding climatic conditions. Complies with **C2TE(S1) Flex standards** for

Features:

- C2TES1 high-performance adhesive
- Strong bonding with reduced slip
- Flexible (S1) – absorbs movement & stress
- Extended open time for easy installation
- Suitable for indoor & outdoor wall and floor applications

In compliance with TS EN 12004-1:2019 C2TE (S1) Flex standards. IS 15477 : 2019 (TYPE 3)

GLAZEFIX112

Polymer modified high performance deformable cementitious adhesive suitable for all kind of climate conditions with high adhesion performance, long lasting feature and flexibility for internal and external wall cladding. For ceramic tiles, porcelain tiles, natural stones, press bricks and glass mosaics in vibration prone areas.

Features:

- Tile on tile application
- For light and dark coloured natural stones
- Longer open time
- Mixed only with water
- Does not slip in vertical applications.

In compliance with TS EN 12004-1:2019 C2TE S1 Flex standards. IS 15477 : 2019 (TYPE 4)



SCAN FOR MORE INFORMATION

(C2TES1)



Color: Grey | White
Pack Size: 20 | 40Kg

GLAZE PLUS

(C2TE(S2))



Application with trowels

Color: Grey | White
Pack Size: 20 | 40Kg

SCAN FOR MORE INFORMATION

CAMEL-5555

CAMEL-5555 is a next-generation, high-performance, flexible tile adhesive formulated with advanced polymers, fibres, and gel technology for superior bonding strength and durability. Designed for demanding tile and stone installations, it delivers excellent initial and final adhesion, maximum grip, and high deformability. Suitable for interior and exterior applications, **CAMEL-5555** performs reliably under extreme temperature variations, mechanical stress, and moisture exposure.

In compliance with TS EN 12004 - 1:2019 norms C2TE S2 Flex standards. IS 15477 : 2019 (TYPE 5)

WM-LASTIK-T -PU ADHESIVE

WM-LASTIK-T is a two component modified POLYMER Adhesive designed for the installation of ceramic tile, Vitrified tiles, metal tile, glass tile, Agglomerates, glass mosaic tile and natural stone on any substrate. It is highly elastic, thixotropic and suitable to lay water sensitive tiles & stone on highly expandable, deformable, absorbent and non-absorbent substract.

Features:

- HIGHLY FLEXIBLE & SUPERIOR BOND STRENGTH
- SUITABLE FOR ALL THE SUBSTRATES INCLUDING METAL
- GOOD FOR VERTICAL APPLICATIONS
- IDEAL FOR AGGLOMERATES & MOISTURE SANATIVE TILES/STONES



SCAN FOR MORE INFORMATION

Pack Size: 4Kg | 8Kg

GLAZE PLUS

PROFILL-900

GLAZE PROFILL-900 is polymer modified cement based non sanded grout which is ideal for fitting & finishing of all types of tiles, marble and stone's joints in interior or exterior for both floors & walls, grouting of joint treatment with resistant water type joint.

Features:

- Extra fine finish
- High resistant to sunlight
- Easy to clean
- High performance grout
- Excellent water resistance
- Designed for grouting wall & floor tiles, marbles, & stones etc.
- Natural antibacterial



Pack Size: 1Kg

MULTI- PASTE

MULTI-PASTE is a UV-resistant, two-part adhesive designed for strong and durable bonding on wood, metal, drywall, and plyboard. Ideal for interior and exterior applications, it features a thixotropic, non-sag formula, making it perfect for vertical and overhead use. With high mechanical strength, shrink-free hardening, and excellent abrasion resistance, it ensures long-term durability and reliability. **MULTI-PASTE** offers gap-filling capability, vibration resistance, and uniform stress distribution, making it the go-to solution for construction, furniture, and industrial applications..



Pack Size:

1Kg | 2Kg | 4Kg | 8Kg



SCAN FOR MORE INFORMATION

GLAZE PLUS



MIX & FIX

Mix & Fix is a white synthetic polymer additive designed to enhance the performance of cement-based grouts like CEMENT POLYMER GROUT, SUPER GROUT, and WIDE JOINT GROUT. It improves adhesion strength, abrasion resistance, flexibility, and water resistance, making it an essential product for professional tile joint grouting and surface repairs

Features:

- Superior Adhesion Strength
- Enhanced Abrasion Resistance
- High Flexibility
- Water Resistance
- Compatible with Cement-Based Grouts
- Smooth Application
- Eco-Friendly Composition



Pack Size:
1Kg | 5Kg | 20Kg



SCAN FOR MORE INFORMATION

MEGA - BOND (PU ADHESIVE)

MEGA-BOND is a two-component, high-performance polyurethane adhesive designed for fixing ceramic tiles, natural stones, and engineered surfaces. It provides superior bonding strength, flexibility, and durability for both interior and exterior applications.

Application:

Ceramic and vitrified tiles
Granite, marble, and natural stone
Glass and porcelain mosaics
Concrete, metal, and cement boards
High-stress and high-moisture areas



SCAN FOR MORE INFORMATION

Pack Size:
4 | 8Kg

GLAZE PLUS



Two Component Modified Polymer Adhesive



GLAZE FLEX 49

GLAZE FLEX 49 is a two-component, high performance, polyurethane adhesive for ceramic tiles and stone material.

Application:

The substrates must be cured, mechanically strong, free of loose particles, grease, oil, paint, wax and be sufficiently dry. Rust on iron surfaces must be removed by sandblasting.



Pack Size: 4Kg | 8Kg

SCAN FOR MORE INFORMATION

GRIP LOCK

GRIP LOCK is a high-performance water-based bonding agent designed to improve adhesion on smooth and low-absorption surfaces. It penetrates deeply and forms a strong bonding bridge, eliminating the need for surface roughening.

Application:

GRIP LOCK is recommended for improving bonding between:

- Concrete surfaces
- Cement-sand plaster
- Gypsum plaster
- Marble and granite backs
- Natural stone substrates



Pack Size:
1Kg

SCAN FOR MORE INFORMATION



High Strength Epoxy Solutions



**MARBLE
FILLER**

EPOXY SOLUTIONS

Engineered for powerful bonding, durability, and precision. Ideal for stone, marble, ceramic, concrete, and metal applications. Trusted by professionals for seamless installation and long-lasting performance.



GLAZE PLUS

EPO-LAM-1009 (A+B)

EPO-LAM-1009(A+B) Epoxy resin is a water clear, low viscosity resin system for coating, doming, marble crack filler and resin art applications. It is a solvent free epoxy specifically formulated as a clear, ultra-high gloss coating system that will self-level and cure at room temperature (15°C to 32°C). The system has excellent air- release and has been optimised for extended UV stability.

Application

The surfaces to be coated should be dry and free from contaminants. Use two clean plastic containers of equal volume to measure the correct proportion of resin and hardener.



Pack Size: 1.5kg & 4:2kg



SCAN FOR MORE INFORMATION

EPO-MAX-10005 (A+B)

EPO-MAX-10005 is two component modified, epoxy based system suitable for treatment of Italian marbles and granites. It is a room temperature curing system, having low viscous and good penetrating properties into cracks for marbles and granites. The system shows excellent impregnation and gloss properties after curing. Faster productivity can be achieved, if curing is performed at higher temperature between 40°C and 60°C. Curing at higher temperature is recommended to achieve optimum performance.

Application

- Enhance self-colour of the granites and Italian marbles
- Good colour stability
- Good penetrating power into cracks
- High gloss
- Low shrinkage
- System can be pigmented
- Thermally stable and suitable to perform in extreme conditions
- Water and chemical resistant



SCAN FOR MORE INFORMATION

Pack Size: 1:250 gms & 4:1kg

GLAZE PLUS



MARBLE CRACK FILLER



SCAN FOR MORE INFORMATION

Pack Size: 1.5kg & 4:2kg

EPO-SEAL-1015

EPO-SEAL-1015 Epoxy resin is a water clear, low viscosity resin system for coating, doming, marble crack filler and resin art applications. It is a solvent free epoxy specifically formulated as a clear, ultra-high gloss coating system that will self-level and cure at room temperature (15°C to 32°C). The system has excellent air- release and has been optimised for extended UV stability.

Feature:

- Concentrated, fast acting
- Can be diluted with water to desired ratio
- Easy to use, reduced odour Provides clean surroundings
- Effective against efflorescence and cement haze

EPO-TECH 9090:9096

EPO-TECH (9090:9096) 1:1 RATIO is multipurpose epoxy based, moisture tolerant structural adhesive with extra clear transparent look with 1:1 mixing ratio. It features high bonding strength and bearing capacity with molecular flex and toughness. It is ideal for freeze/thaw conditions and can withstand vibration and shock load during transportation. It is easy to use. Suitable for filling, bonding, reinforcing, repairing and sealing. It has excellent chemical resistance. 100% UV resistant with non-yellowing feature. Suitable for horizontal and vertical applications.

Application

- Bonding of natural stones like marble, travertine etc.
- Bonding of surfaces like concrete, granite, tile and wood.



SCAN FOR MORE INFORMATION

Pack Size: 2Kg

GLAZE PLUS

WHITE JOINT FILLER



SCAN FOR MORE INFORMATION

Pack Size:
2.25Kg (1.500gms + 750gms)

EPO-GOLD-50:10

EPO-GOLD-50:10 is a gel form, transparent, UV resistant, non- yellowing, moisture tolerant, structural adhesive with 2:1 mixing ratio, hardening in 45 min. It can be used when a precise and sensitive adhesion surface is needed (>1mm). It features high bonding strength and bearing capacity. Cured EPO-GOLD-50:10 is a stone like yet elastic, chemically inert, high strength, solid and does not change on aging. The hardened product is stress free and retains strength and elasticity over a range of temperatures from above 90°C to as low as -30°C without softening or embitterment.

EPO-LITE-5090

EPO-LITE-5090 is a gel form, transparent, UV resistant, non- yellowing, moisture tolerant, structural adhesive with 2:1 mixing ratio, hardening in 45 min. It can be used when a precise and sensitive adhesion surface is needed (>1mm). It features high bonding strength and bearing capacity. Cured EPO-LITE-5090 is a stone like yet elastic, chemically inert, high strength, solid and does not change on aging. The hardened product is stress free and retains strength and elasticity over a range of temperatures from above 90°C to as low as -30°C without softening or embitterment.

JOINT FILLER



SCAN FOR MORE INFORMATION

Pack Size:
2.25Kg (1.500gms + 750gms)



GLAZE PLUS

STONELOCK PU-E



StoneLock PU-E is a UV-stable, non-yellowing, solvent-free resin designed for strong, clear bonding on stone, terrazzo, and concrete. It offers fast curing, high strength, and lasting color stability, even on white and light surfaces.. Perfect for thin bonding applications, StoneLock PU-E combines

Features:

- UV-Stable
- Non-yellowing
- Low color
- High tensile strength

Pack Size: 1250ml(750ml+500ml) (Two parts)

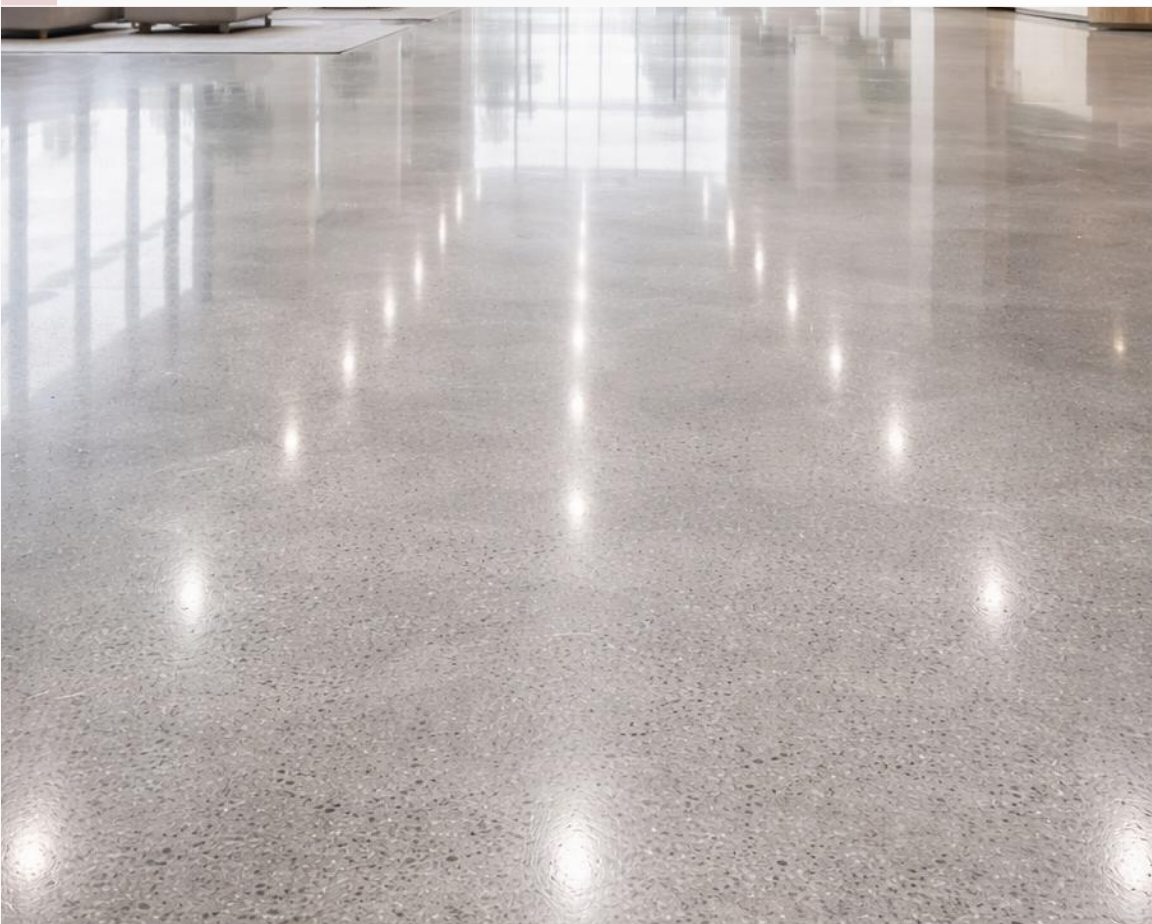


SCAN FOR MORE INFORMATION





High Strength Lithium Solutions



LITHIUM SOLUTIONS

Advanced lithium silicate solutions that penetrates deep to strengthen concrete and stone from within. Delivers enhanced hardness, long-lasting durability, and a refined polished finish—without surface coatings.

GLAZE PLUS

STONE SEAL S-2H

Advance lithium chemistry which is water-based solution requires no rinsing and is VOC compliant in all areas of the world. When applied on surface, it penetrates up to 14 inch (7mm) where it react with free calcium to form insoluble calcium silica hydrate, which makes marble or stone more water, stain and abrasion resistant for easier maintenance and longer life. It is also suitable for marble, natural stones and concrete polishing procedures and helps prolong the life of polished finishes.

For the treatment of ground and polished absorbent marble, natural stone, lime stone, sandstone, granite or concrete.



SCAN FOR MORE INFORMATION

Pack Size:
1L | 5L | 20L

STONE SEAL S-8H

Penetrating Nano-Lithium treatment for marble, natural stone, terrazzo and polished concrete surfaces formulated specifically for surfaces which has been ground and polished up to 800 grits. Environmentally friendly treatment also reduces efflorescence abrasion resistance and reduces dusting.

Application

For the treatment of ground and polished absorbent marble, natural stone, lime stone, sandstone, granite or concrete.



SCAN FOR MORE INFORMATION

Pack Size:
1L | 5L | 20L



Deep Cleaning Solutions for Stone & Tile



CLEANING SOLUTIONS

Glaze Plus Cleaning Solutions provides powerful yet safe cleaning for stone, concrete, and various surfaces. It effectively removes dirt, stains, and residues while restoring shine and maintaining long-term surface beauty.

GLAZE PLUS

BRIGHT CLEAN- GRANITE CLEANER

Bright Clean : Impregnator based on silicon

Application

Penetrates deep into the stone, makes it water-repellent without impairing the vapor permeability. Protects facades from driving rain, causes water to pearl off and is dirt repellent.



Pack Size: 1L | 5L



SCAN FOR MORE INFORMATION

HYPER CLEAN Tap & Tile Cleaner

Multipurpose cleaner for just about every household surface. Every time it delivers fast, easy & sparkling results that you expect Chimneys | Kitchen stove | Door Handles | Marble & Tile Flooring | Ceramic & Stainless Sink / Refrigerators | Microwave | Taps Oven

It contains a perfect combination of surfactants and emulsifiers which helps in removing greasy, soil and dirt stains from wet surfaces and helps in lifting away dirt stains from various types of surfaces.

The presence of solvents helps material in splitting dirt particles into various small micro parts as a result the process of cleaning is made easy.



Pack Size: 1L | 5L



SCAN FOR MORE INFORMATION

GLAZE PLUS

POWER CLEAR Tile Cleaner

POWER CLEAR-TILE CLEANER is a heavy duty, powerful acid based cleaner, used to remove strong haziness of cementitious grout, adhesives and other hard water deposit from tile surface. It is a highly effective water dilutable cleaner that can be diluted with water to desired proportion

Feature

- Concentrated, fast acting
- Can be diluted with water to desired ratio
- Easy to use, reduced odour Provides clean surroundings
- Effective against efflorescence and cement

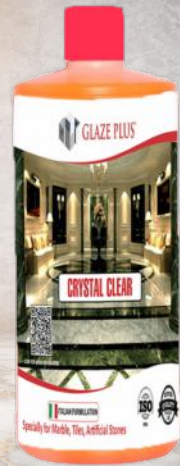


SCAN FOR MORE INFORMATION

Pack Size: 1L | 5L

CRYSTAL CLEAR (Shampoo)

A special product for the regular cleaning and care of natural and artificial stone. Regular use protects the stone, preserves structure and colour. Also suited for cotto, terracotta and terres quites surfaces as well as unglazed clay tiles and bricks. Daily cleaning shampoo, floor polishing shampoo, marble & tile cleaning shampoo, highly fragrance with 12 hours.



SCAN FOR MORE INFORMATION

Pack Size: 1L | 5L

GLAZE PLUS

GP-STAINER+



GP-STAINER+ is a water-based stain remover to definitively solve specific types of stain on different types of material. GP-STAINER+ special formulation makes it a definitive, effective solution to remove any yellowing, damp stains, dark marks, stubborn stains, and stubborn coloured stains. GP-STAINER+ can be applied on all surfaces without changing their original appearance, even the most delicate types such as polished marbles and acid-sensitive finishes. GP-STAINER+ works alone without needing any further processes until it completely removes the stain.



SCAN FOR MORE INFORMATION

Pack Size: 500ml

Safety

Avoid from eyes. Must be stored away from children. Comply with the directives in latest Safety Data Sheet.





Advanced Waterproofing Solutions



WATERPROOFING SOLUTIONS

Glaze Plus Waterproofing Solutions creates a seamless protective layer that blocks water penetration and protects surfaces from moisture damage. It delivers durable, long-lasting performance for terraces, roofs, and concrete structures.

GLAZE PLUS

AQUA SEAL-2K



- Concrete foundations, basements wall and lift pits.
- Swimming pools, water tanks and reservoirs
- Concealed roofs, parking decks, bathroom, toilet, kitchen, balconies and planters.
- Any other concrete, cement or masonry surface subject to damage from moisture.



Pack Size : 3Kg | 15Kg | 30 Kg

SCAN FOR MORE INFORMATION

PROTEK-WATERLOCK

Features:

- Improves waterproofing properties when used as a coating mixed with cement.
- Contains no chloride.
- Provides excellent bond to concrete & masonry plaster.
- Improves tensile, flexural and compressive strength as compared to control concrete hence increases the durability of structures.
- Improves bond strength, facilitating tough and hard wearing surface.



SCAN FOR MORE INFORMATION

Pack Size : 1Kg | 5Kg | 10 Kg | 20 Kg | 50Kg

GLAZE PLUS

PRIME POL



Pack Size: 1Kg



SCAN FOR MORE INFORMATION

GP-PRIME POL is a two component epoxy resin based waterproofing compound. One part consists of epoxy resin and the other part of curing agent. After mixing both the parts, it can be thinned down with water. It possesses all the attributes of normal solvent based epoxy compositions such as excellent water and chemical resistance, adhesion, hardness, toughness and mechanical strength. One of the major advantages of GP-PRIME POL over solvent based epoxy is that it can be applied on damp surface also. Being free from solvents, it does not pose any health hazard to the applicator. GP-PRIME POL is completely, consistent & economical to apply.

AQUAPROOF

- All types of Terraces – Flat and sloping / All type of roofs.
- Waterproofing for roofs ranging from asphalt, asbestos, cement to concrete and terrazzo tiles.
- Recommended for both horizontal and inclined structures.
- Waterproofing of roof slabs, terraces, balconies, sun shades, parapet walls, etc. Provides additional waterproofing and protection when used as base or intermediate coat in brickbat coba.
- For waterproofing of new as well as old surfaces.



SCAN FOR MORE INFORMATION

Pack Size : 1Kg | 4Kg | 20 Kg



Advanced Stone Bonding Solutions



STONE BONDING SOLUTIONS

Glaze Plus Stone Bonding Solutions delivers superior adhesion, strength, and durability for marble, granite, and other natural stones. Engineered for high-performance applications, it ensures long-lasting bonds for construction, restoration, and architectural projects

GLAZE PLUS

PROBOND



Pack Size : 36gm | 90gm 180gm | 360gm | 450gm
| 900gm | 1800 gm (1.8 kg) 4.5 Kg | 5Kg



SCAN FOR MORE INFORMATION

GP-R101 resin is a modified epoxy resin. **GP-H201** is suitable to cure epoxy resin at ambient temperature. It is also suitable for bonding a variety of materials including metal, ceramic, and concrete where relatively high strengths are required.

Benefits

- High shear and peel strength
- Good electrical insulation properties
- Long working time
- Long open time
- Easy to apply
- Water resistance

PROFAST

PROFAST is a two component epoxy adhesive ideal for general purpose applications. This two component epoxy adhesive cure fast at room temperature and when fully cured, the epoxy is resistant to a wide range of chemicals and solvents, and acts as an excellent electrical insulator. It is used for epoxy casting and designed specifically for encapsulation

Feature

- Short pot life
- Clear appearance

Pack Size : PROFAST (A+B)

is available 500gm, 1kg pack and 2kg pack.



SCAN FOR MORE INFORMATION

GLAZE PLUS

PROQUICK

PRO QUICK is a low viscosity, methyl based cyanoacrylate adhesive. It is designed to bond a wide range of similar and dissimilar materials involving metal. Handling strength in most applications is in 5 to 10 seconds.



SCAN FOR MORE INFORMATION

Pack Size: 20gm | 50gm





Advanced Epoxy Grout Solutions



EPOXY GROUT SOLUTIONS

Glaze Plus Epoxy Grout Solutions delivers exceptional strength, durability, and resistance to stains and chemicals. Engineered for high-performance applications, it ensures long-lasting, non-porous joints with a smooth, glossy finish.

GLAZE PLUS

GLAZE EPOXY DESIGN Epoxy Grout (Two Part)



SCAN FOR MORE INFORMATION

High-performance epoxy grout developed for indoor and outdoor tile and stone joints where hygiene, durability and stain resistance are essential.

Applications Ceramic tiles | Vitrified tiles | Stone joints | Bathrooms | Kitchens | Interior & exterior areas

Pack Size: 1 Kg | 5Kg

SUN POX

Gel Base Epoxy Grout

Two-component epoxy grout designed for long-lasting protection and superior performance in tile and stone joints.

Applications Floor & wall tiles | Mosaics | Bathrooms | Swimming pools | Commercial areas

Pack Size: 1 Kg | 3Kg | 5Kg



SCAN FOR MORE INFORMATION



Advanced Polyester Base Solutions



POLYESTER BASE SOLUTIONS

Glaze Plus High Strength Polyester Repair Solutions is engineered for fast-curing, high-strength bonding and filling of natural stones such as marble and granite. It offers excellent workability, reliable color matching, and long-term durability—making it ideal for vertical and horizontal applications, repairs, and seamless joint finishing.

GLAZEPLUS

GEL SPECIAL



Pack Size : 1Kg & 30g hardener



SCAN FOR MORE INFORMATION

Gel special is mainly used in stone industry for filling and bonding natural stones. Due to their gel paste like creamy consistency the products are suited to fill small and middle -size holes and to bond horizontal and vertical surfaces. Special attention is called to the product Gel Special which does not contain any colour pigments and can thus easily be coloured to any shade required by adding Glaze plus Polyester colouring pastes or colouring concentrates.

SUPER MASTIC

Excellently suitable for bonding stones especially on vertical surfaces and for filling of big holes or big cracks and filling small and medium-size holes or cracks as well as for bonding horizontal surfaces. Also suited for reinforcement work.

Pack Size : 1.25Kg



SCAN FOR MORE INFORMATION

GLAZEPLUS



EPO-GEL

EPO-GEL is a two component hybrid polymer / ice white transparent stone adhesive for engineered and natural stone. Ideal for invisible joints, especially on crystalline, light/white coloured Stones. EPO-GEL knife grade / ice transparent is in gel form and used for vertical applications whereas water. transparent liquid used for horizontal applications.



Pack Size : 1Kg & 180g hardener

TRANSPARENT

TRANSPARENT is a two component polyester based transparent natural stone adhesive used for gluing and fills up porous surface stones. TRANSPARENT is in paste form and used for vertical applications whereas SOLID & LIQUID TRANSPARENT used for horizontal applications.



Pack Size : 1Kg



GLAZEPLUS

POLONIUM



Pack Size : 1Kg



SCAN FOR MORE INFORMATION

POLONIUM is a high-quality, waterclear knife-grade marble filler based on UV-stabilized unsaturated polyester resin technology. It is engineered for precision stone processing, offering excellent transparency, controlled curing, and strong bonding performance. Once cured, it forms a rigid and durable structure that can be easily processed through grinding, polishing, drilling, or milling. Ideal for professional applications where clean finishing and structural strength are critical.

KEY HIGHLIGHTS

- Waterclear transparent finish
- Smooth and controlled curing
- Strong and durable bonding
- Excellent polishing capability
- Suitable for vertical applications
- UV-stable, non-yellowing performance





Advanced Polishing Solutions



POLISHING SOLUTIONS

Explore our comprehensive range of premium marble and tile solutions, engineered for cleaning, polishing, protection, bonding, and surface enhancement. Each formulation delivers professional-grade performance for residential, commercial, and industrial applications.

GLAZEPLUS

SUPER SHINE

SUPER SHINE is a solvent-based fast-absorbing wax to polish and enhance the color of natural stone surfaces. It can be easily applied also along edges and surface irregularities. The use of SUPER SHINE enhances the shade and brightness of the treated material. The product provides water and stain-resistant properties making daily maintenance operations easier.

Application

- Easy application
- It provides water and stain resistant properties
- It enhances the shade and brightness of the material
- It won't yellow overtime



Pack Size: 1 L | 5L



SCAN FOR MORE INFORMATION

SUPER SHINE PLUS

Colour-enhancing shiner which gives a wet look to stones. Suitable for surfaces which are polished, matt finish and glossy.

Application Area

Marbles, Granites, All types of dark marbles & dark granites

- Colour enhancer
- Recommended for indoor & outdoor application
- Protection to surfaces against oil and water
- Gives anti-graffiti (anti scratch) effect
- Coverage of 20-60 sqm/L



SCAN FOR MORE INFORMATION

Pack Size: 1 L | 5L

GLAZEPLUS

SILICONIA N SHINE



Pack Size: 1 L | 5L



SCAN FOR MORE INFORMATION

SILICONIA N SHINE with double action: polishes and enhances color of material. Its formulation allows a quick application, lets the stone breath permitting the residual humidity to go out. Polisher and color enhancer used to increase glossy and color of stones. SILICONIA N SHINE penetrates deeply, enhancing the color of materials and gives an attractive and deep wet look; it does not make any film.

CRYSTAL SHINE

Crystal Shine is a high performance polishing powder for any type of marble or agglomerate, including the most "difficult" ones, such as marble-resin compounds. Its special formulation has been developed to quickly produce a high vitreous thickness. Compared to other powders of Crystal Shinein GLAZE PLUS, this powder also provides a greater vitreous look and a much more shiny surface seen against the light, even on poor materials with difficult areas to be polished.



SCAN FOR MORE INFORMATION

Pack Size: 1 Kg | 5Kg

GLAZEPLUS

M-SHINE PLUS



Pack Size : 100ml



SCAN FOR MORE INFORMATION

M-SHINE PLUS is a solvent-containing product made of superior synthetic resin and waxes. The product is characterized by the following Qualities:

- Fast drying
- Strong colour intensification
- High degree of gloss
- Stable to yellowing
- Water and dirt resistant
- Especially easy to care

SUPER CRYSTAL (SOLID WAX)

SUPER CRYSTAL SOLID WAX is a fast-drying, solvent-based solid wax to polish and restore surfaces without foot traffic, such as walls, tops and work surfaces. Its formula, containing top-quality paraffin, gives an excellent shine to the surfaces on which it is used and at the same time, it enhances the tone and look. **SUPER CRYSTAL SOLID WAX** also stands out for its quick, easy application, thanks to its fast-drying action. A surface treated with **SUPER CRYSTAL SOLID WAX** is also protected against water and stain penetration, thanks to its water and oil-repellence, which also make successive cleaning and maintenance operations easier. **SUPER CRYSTAL SOLID WAX** is generally used on natural stone surfaces but it can also be used on cotto, terracotta, cement agglomerates, cementine and terrazzo tiles.

Pack Size : 750gm



SCAN FOR MORE INFORMATION

GLAZEPLUS

GP-999



SCAN FOR MORE INFORMATION

GP-999 is a high performance polishing powder for any type of marble or agglomerate, including the most “difficult” ones, such as marble-resin compounds. Its special formulation has been developed to quickly produce a high vitreous thickness. Compared to other powders of GP-999 in GLAZE PLUS, this powder also provides a greater vitreous look and a much more shiny surface seen against the light, even on poor materials with difficult areas to be polished. The product reacts with the material providing an excellent sheen and a good resistance to traffic marks and stains. It does not contain any waxes.

Pack Size: 1kg | 5kg

POLY SHINE (CRYSTAL BLAST)

Poly Shine Crystal Blast : Fluorosilicic Acid-Based Spray Crystallizer for Calcareous Stone Floors
Poly Shine Crystal Blast is a fluorosilicic acid-based formulation designed for the efficient spray crystallization of calcareous stone surfaces, such as marble. This product produces a smooth, high-gloss finish without building a film. It strengthens the stone through crystallization, enhancing wear resistance and reducing sensitivity to acids. Poly Shine Crystal Blast is ideal for both new maintenance and re-crystallizing previously treated floors, ensuring long-lasting protection and enhanced appearance.



SCAN FOR MORE INFORMATION

Pack Size : 1000ml | 5000ml

GLAZEPLUS

CERA+ SHINER



SCAN FOR MORE INFORMATION

CERA+ SHINER is a solvent-based fast-drying wax to polish and enhance the color of natural stone surfaces. It can be easily applied also along edges and surface irregularities. The use of **CERA+ SHINER** enhances the shade and brightness of the treated material. The product provides water and stain-resistant properties making daily maintenance operations easier.

Pack Size: 1000ml | 5000ml

BUFFER PADS

Durable polishing pad designed to improve surface clarity, remove minor scratches and maintain a consistent polished finish without damaging the surface.


GLAZE PLUS

1101


GLAZE PLUS

2101



Advanced Protection Solutions



PROTECTION SOLUTIONS

Glaze Plus Protection Solutions is designed to protect stone and concrete surfaces from stains, moisture, UV exposure, and daily wear. It penetrates deep into the substrate to form an invisible barrier that enhances durability while preserving the natural appearance and texture of the surface.

GLAZEPLUS

SUPER SEALENT STONE IMPREGNATOR



Impregnation which intensified colour shades extremely well. Beginning of protective effect (20C): approx. 24-49h

Application:

weather-resistant product with a long-term effect for indoors and outdoors. Especially suited for colour enhancement of dark and black stone (such as Nero Assoluto, Impala black and Galaxy). Weather-resistant product with a long-term effect for indoor and outdoors. Damaged areas (e.g. hairline cracks) can be treated. The surface thus obtained a homogeneous appearance. Especially suited for fine grained and polished stones.

Pack Size: 1000ml | 5000ml



SCAN FOR MORE INFORMATION

PRO - SHIELD GROUT SEALER

Application

Advanced Protection for Grout & Tile Pro Shield Grout Sealer provides long-lasting protection against water, stains, and spills, keeping grout clean and fresh. Its penetrating formula creates an invisible barrier to resist moisture, dirt, and discoloration. Safe for use on most tiles, it's easy to apply and ideal for kitchens, bathrooms,



SCAN FOR MORE INFORMATION

Pack Size: 1000ml

GLAZEPLUS

PRO DARK

Application

PRO DARK is used for enhancing and protecting absorbent natural and artificial stone surfaces in interior and exterior applications. It is suitable for kitchens and countertops after full curing, bathrooms and sanitary areas, floors, staircases, window sills, terraces, facades, and monument stonework. The product is compatible with granite, marble, limestone, slate, terrazzo, concrete, sandstone, quartz-based surfaces, and cotto, and is especially effective on dark and black stones where deep color enrichment is required.



Pack Size: 1000ml | 5000ml



SCAN FOR MORE INFORMATION

DURA SEAL

Application

DURA SEAL Natural Look Stone Impregnator is used on absorbent natural and mineral stone surfaces where long-term protection is required without altering the original appearance of the material. It is suitable for both interior and exterior applications on floors, walls, façades, terraces, balconies, staircases, and other architectural stone surfaces. The product is ideal for use in residential and commercial environments, including living areas, kitchens, bathrooms, outdoor spaces, and high-traffic zones. It can be applied on natural stones such as marble, granite, limestone, sandstone, as well as on concrete, concrete ashlar, and brick surfaces.



Pack Size: 1000ml | 5000ml



GLAZEPLUS

PROGUARD SBR-90



**BACK COATING
SEALER**

Proguard SBR-90 is a water based film forming come impregnation for protection of polished or rough marble, granite and naturel stone from mortar stain as well as water marks.

Pack Size: 1 Kg | 5Kg | 20Kg



NANOSEAL

Outstanding impregnation on the basis of high-quality

Application:

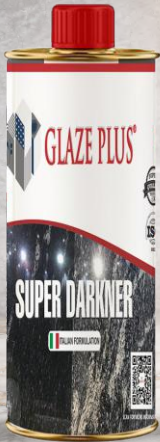
Application: A special impregnation which strongly repels water, grease and oil. Used to protect flooring, table tops and working surfaces made of absorbent natural ant artificial stone (s.a marble, solnhofer stone , sandstone, fine stoneware). For indoors and outdoors. Prevents the stone from staining spots or makes removing of spots much easier, the stone remains capable of breathing. The protective effect already begins after some minutes and is full effective after 2-3hours. Normally the color of the stone remains unchanged. Special substances work against a laminar wetting through liquid drops. Ball-shaped liquid pearls which lie only selectively on top of the stone surface,



Pack Size: 1000ml | 5000ml

GLAZEPLUS

SUPER DARKNER



Pack Size: 1000 ml & 5000 ml



SCAN FOR MORE INFORMATION

Impregnation which intensifies colour shades extremely well. Beginning of protective effect (20°C): approx. 24-48 h.

Application:

Weather-resistant product with a long-term effect for indoors and outdoors. Especially suited for colour enhancement of dark and black stone (such as Nero Assoluto, Impala black and Galaxy). Weather-resistant product with a long-term effect for indoors and outdoors. Damaged areas (e.g. hairline cracks) can be treated. The surface thus obtains a homogeneous appearance. Especially suited for fine ground and polished stones.

SUPER NANOTECH

Outstanding impregnation on the basis of high-quality.

Application:

A special impregnation which strongly repels water, grease and oil. Used to protect flooring, table tops and working surfaces made of absorbent natural and artificial stone (s.a marble, Solnhofen stone, sandstone, fine stoneware). For indoors and outdoors. Prevents the stone from staining spots or makes removing of spots much easier, the stone remains capable of breathing. The protective effect already begins after some minutes and is fully effective after 2-3 hours. Normally the color of the stone remains unchanged. Special substances work against a laminar wetting through liquid drops. Ball-shaped liquid pearls which lie only selectively on the top of the stone surface, run off the surface.



SCAN FOR MORE INFORMATION

Pack Size: 1000ml | 5000ml

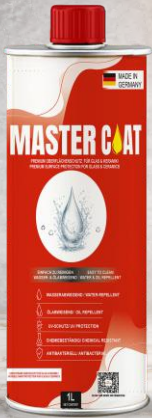
GLAZEPLUS

MASTER COAT CERAMIC COATING

Master Coat is a ceramic surface protection solution for glass and ceramic. It creates an invisible layer that repels water, oil, and dirt, allowing liquids to bead and roll off. The result is a cleaner surface, reduced maintenance, and long-lasting protection without altering the original appearance.

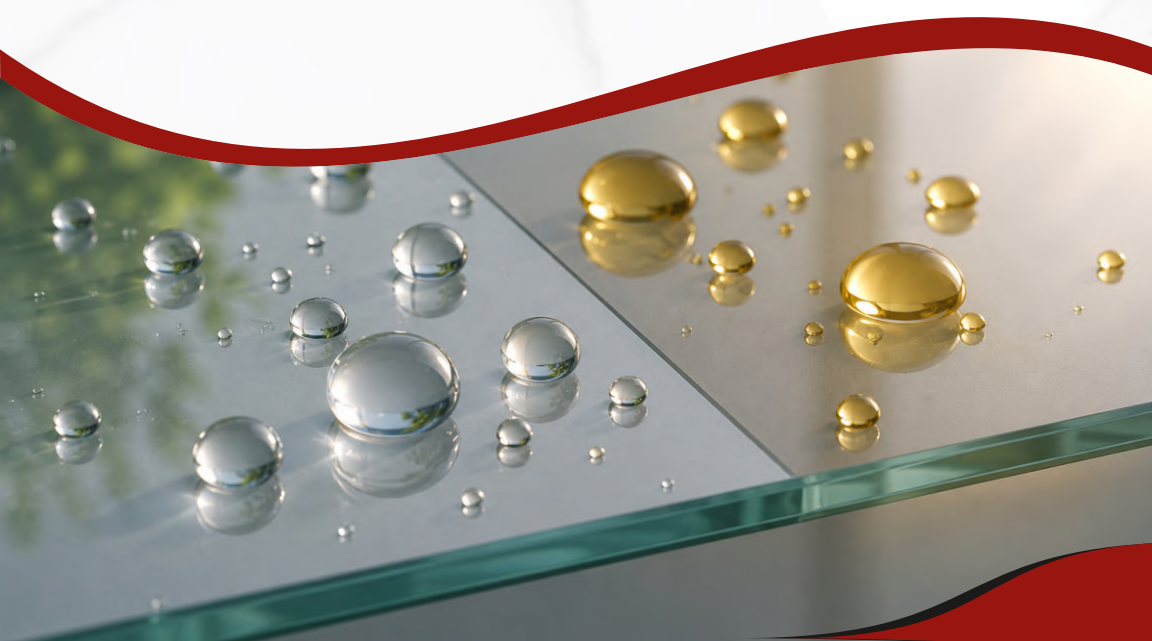
Key Features:

- Invisible ceramic protection layer
- Water & oil repellent (hydrophobic & oleophobic)
- Prevents stains and surface buildup
- Easy-to-clean effect
- UV and weather resistant
- Suitable for glass & ceramic surfaces
- Interior and exterior application
- Non-film forming, transparent finish



SCAN FOR MORE INFORMATION

Pack Size: 1000 ml





Advanced Epoxy Tinting Solutions



TINTING SOLUTIONS

Specially formulated pigment concentrates designed to deliver uniform, vibrant, and long-lasting color performance in epoxy flooring and coating systems

GLAZEPLUS

EPO TINT- 601



Pack Size: 50 g

GlazePlus EPO Tint is a high-quality pigment dispersion developed for seamless integration with epoxy resins and coating systems. It ensures consistent color development, excellent dispersion stability, and superior shade uniformity without affecting the mechanical or chemical performance of the epoxy formulation. The advanced formulation allows precise color customization while maintaining gloss, durability, and long-term performance across industrial and decorative applications.

COLOR CHART





OUR PROJECTS

Delivering reliable stone care and adhesive solutions across residential, commercial, and infrastructure developments.



Luxury Hotel Development

High-performance installation materials supplied for premium hospitality spaces requiring durability and precise finishing.



Commercial Mall Development

Reliable installation systems provided for large commercial interiors ensuring strong bonding and long-term surface performance.



Corporate Office Complex

Professional-grade adhesive solutions supplied for modern commercial structures demanding strength and lasting stability



Trusted By Industry Professionals

Glaze Plus proudly collaborates with builders, contractors, architects, and construction professionals across the region. Our stone care and adhesive solutions are trusted for their reliability, consistent performance, and technical support across residential, commercial, and infrastructure projects.

WHY PROFESSIONALS TRUST GLAZE PLUS

WHY TRUST GLAZE PLUS



Consistent Product Availability

Reliable inventory to meet your project timelines.



Quality-Assured Solutions

Tested products that stand up to industry standards.



Reliable Project Supply

Dependable delivery for continuous project flow.



Experienced Industry Network

Local deconneeters.



Experienced Industry Network

Strong connections within the construction and stone care sectors.



On-Time Delivery Support

Timely logistics ensuring materials reach your site as planned.



Technical Product Guidance

Expert advice for optimal solutions and applications.

We focus on long-term partnerships by delivering quality products, timely supply, and dependable service to every client.

✓ 500+ Contractors Served

✓ 50K+ Global Community

✓ 20+ Years Legacy

✓ Trusted Supply Network



GLAZE PLUS[®]

Manufactured & Imported by:

GLAZE PLUS INDIA - UAE - ITALY

CORPORATE OFFICE

GLAZE PLUS

Islamic Bank Building, Block C, Fifth floor, Office no. 501,
King Faisal road, Al Qasimia - Sarjah Dubai

CORPORATE OFFICE

GLAZE PLUS

Piazza Boldrini, 20197 San Donato Milanese Italy
Fax. +39262552686 | Ph: +3925101

REGD OFFICE

GLAZE PLUS

C401 Swami narayan Business Park Narol
Circle Ahemdabad - 382405

Email: sales@glazeplus.in | Website: www.glazeplus.in
www.glazeplusitaly.com