

Essentials

Front to Back & More!

H1/25



TABLETOP
BUFFETWARE
BARWARE
BAKING
COUNTERTOP
EQUIPMENT

 **Beltram**
Of The Carolinas
INNOVATIVE FOODSERVICE GROUP.

GREENVILLE
105 Shaw St. | Greenville, SC 29609
864.236.5749

GREENWOOD
1720 Bypass 72 NE. | Greenwood, SC 29649
864.547.8415

IFGDirect.com



335DAL CB



335BLK



VDWA



NDWA



PDWA



CIFC-1



CIFC-22



CIPK-2



338HBBLK17



VC25 - VINYL TABLE COVERINGS
 All vinyl table coverings have a flannel back.
 Colors available: Red/Blue/Green/Black/Yellow/
 Burgundy. Solid colors are also available.

ITEM NO.	DESCRIPTION
VC25	25 YD x 52" Rolled Vinyl Table Covering with Flannel Backing
CIFC-1	Cardura Insulated Food Carrier 22" x 12" x 12"
CIFC-2	Cardura Insulated Food Carrier 22" x 12" x 12"
CIPK-2	Cadura Pizza Delivery Bag 18" x 18" x 5 3/8"
335BLK	Bib Apron with Pocket, 32" x 28"
335DAL CB	Artisan Bib Apron, 3 pocket
338HBBLK17	High Heat Oven Mitt, Nomex exterior, 17"L
VDWA	Nylon Dishwashing Apron 36" L x 42" W
NDWA	Neoprene Dishwashing Apron 45" L x 35" W
PDWA	Clear Plastic Dishwashing Apron 48" L x 35" W

ITEM NO. DESCRIPTION

TABLE BASES

SKICSLZJ2222	Table Base, Complete, 22" X 22"
SKICSLZJ2230	Table Base, Complete, 22" X 30"
SKICSLZJ3030	Table Base, Complete, 30" X 30"
SKICSLZJ522	Table Base, 22" X 5" Base, Black Finish
SKICTC3753	Bar Height Table Base Column, 37"

SINKS

SKIH512SS	Hand Sink, Wall Mounted, 10" X 10"
SKIH517	Hand Sink, Wall Mounted, 10" X 14"
SKIH517SS	Hand Sink, Wall Mounted, L&R Splash
SKISSCT118181400	Sink 1 Comp 18" X 18" X 14" NO DB
SKISSCT118181418L	Sink 1 Comp 18" X 18" X 14", 18" LDB
SKISSCT118181418R	Sink 1 Comp 18" X 18" X 14", 18" RDB
SKISSCT24241400	Sink 1 Comp 24" X 24" X 14" NO DB
SKISSCT24241424R	Sink 1 Comp 24" X 24" X 14", 24" LDB
SKISSC2T18181400	Sink 2 Comp 18" X 18" X 14" NO DB
SKISSC2T18181418R	Sink 2 Comp 18" X 18" X 14", 18" RDB
SKISSC2T24241400	Sink 2 Comp 24" X 24" X 14" NO DB
SKISSC3T16201418RL	Sink 3 Comp 16" X 20" X 14", 18" RLDB
SKISSC3T18181418RL	Sink 3 Comp 18" X 18" X 14", 18" RLDB
SKISSC3T24241424RL	Sink 3 Comp 24" X 24" X 14", 24" RLDB
SKISSCBSIT14	Bar Sink 1 Comp 10" X 14" X 10"
SKISSCBS4T72LR	Bar Sink 4 Comp 10" X 14" X 10"

SHELVING

SKIWEGB14	Wall Mount Brackets, Green, 14" Set Of 2
SKIWEGB18	Wall Mount Brackets, Green, 18" Set Of 2
SKIWEGB24	Wall Mount Brackets, Green, 24" Set Of 2
SKIWGR1430CWP	Wire Shelving, Green Epoxy, 14" X 30"
SKIWGR1436CWP	Wire Shelving, Green Epoxy, 14" X 36"
SKIWGR1442CWP	Wire Shelving, Green Epoxy, 14" X 42"
SKIWGR1448CWP	Wire Shelving, Green Epoxy, 14" X 48"
SKIWGR1454CWP	Wire Shelving, Green Epoxy, 14" X 54"
SKIWGR1460CWP	Wire Shelving, Green Epoxy, 14" X 60"
SKIWGR1472CWP	Wire Shelving, Green Epoxy, 14" X 72"
SKIWGR1824CWP	Wire Shelving, Green Epoxy, 18" X 24"
SKIWGR1830CWP	Wire Shelving, Green Epoxy, 18" X 30"
SKIWGR1836CWP	Wire Shelving, Green Epoxy, 18" X 36"
SKIWGR1842CWP	Wire Shelving, Green Epoxy, 18" X 42"
SKIWGR1848CWP	Wire Shelving, Green Epoxy, 18" X 48"
SKIWGR1854CWP	Wire Shelving, Green Epoxy, 18" X 54"
SKIWGR1860CWP	Wire Shelving, Green Epoxy, 18" X 60"
SKIWGR1872CWP	Wire Shelving, Green Epoxy, 18" X 72"
SKIWGR2424CWP	Wire Shelving, Green Epoxy, 24" X 24"
SKIWGR2430CWP	Wire Shelving, Green Epoxy, 24" X 30"
SKIWGR2436CWP	Wire Shelving, Green Epoxy, 24" X 36"
SKIWGR2442CWP	Wire Shelving, Green Epoxy, 24" X 42"
SKIWGR2448CWP	Wire Shelving, Green Epoxy, 24" X 48"
SKIWGR2454CWP	Wire Shelving, Green Epoxy, 24" X 54"
SKIWGR2460CWP	Wire Shelving, Green Epoxy, 24" X 60"
SKIWGR2472CWP	Wire Shelving, Green Epoxy, 24" X 72"
SKIWGR63CWP	Shelving Post 63", Numbered, Green
SKIWGR74CWP	Shelving Post 74", Numbered, Green
SKIWGR86CWP	Shelving Post 86", Numbered, Green

WORK TABLES

SKIWT2424EBS	Work Table 24" X 24" Upturn Top
SKIWT2424ES	Work Table 24" X 24" Flat Top
SKIWT2430EBS	Work Table 24" X 30" Upturn Top
SKIWT2430ES	Work Table 24" X 30" Flat Top
SKIWT2436EBS	Work Table 24" X 36" Upturn Top
SKIWT2436ES	Work Table 24" X 36" Flat Top
SKIWT2448EBS	Work Table 24" X 48" Upturn Top
SKIWT2448ES	Work Table 24" X 48" Flat Top
SKIWT2460EBS	Work Table 24" X 60" Upturn Top
SKIWT2460ES	Work Table 24" X 60" Flat Top
SKIWT2472EBS	Work Table 24" X 72" Upturn Top
SKIWT2472ES	Work Table 24" X 72" Flat Top
SKIWT3024EBS	Work Table 30" X 24" Upturn Top
SKIWT3024ES	Work Table 30" X 24" Flat Top
SKIWT3030EBS	Work Table 30" X 30" Upturn Top
SKIWT3030ES	Work Table 30" X 30" Flat Top
SKIWT3036EBS	Work Table 30" X 36" Upturn Top
SKIWT3036ES	Work Table 30" X 36" Flat Top



VOLLRATH®



1511-C08



201250



97241



40706



40795



38103



38003



38004



38063



38099



1521B-05



0644N



101-1-1



131-8



502N



PSG4-SF120

ITEM NO. DESCRIPTION

38003	ServeWell Hot Food Table, (3) Wells, 46" X 32" X 34"
38004	ServeWell Hot Food Table, (4) Wells, 60-11/16" X 32" X 34"
38063	ServeWell Buffet Breath Guard, 46" X 35-3/8" X 23-1/2"
38099	ServeWell 4" Caster Set, (2) With Brakes, (2) Without Brakes
38103	ServeWell Hot Food Table, (3) Wells, 46"W X 32"D X 34"H
40703	Mini Cayenne Convection Oven, Counter Top, Electric
40706	Cayenne Fryer, Electric, Single Fry Pot, 11"W X 17-5/8"D X 11"H
40795	Cayenne Italian Panini Sandwich Press, Double, 19" X 9-1/8"
97241	Cutlery Dispenser, Silv-A-Tainer, Stainless, 6 Cylinder
201250	Drop-In Sink, (1) Compartment, 10-3/4" X 4-1/2" Bowl
1511-C08	Traex Color Mate Drain Box, Perforated, 20" X 15" X 5"
1521B-05	Traex Deluxe Bus Box, (1) Compartment, 21-3/4" X 15-5/8" X 5"
1522-05	Traex Bus Box Cover, 20" X 15", Fits 1521 & 1527 Bus Boxes, White
1522-06	Traex Bus Box Cover, 20" X 15", Fits 1521 & 1527 Bus Boxes, Black
1522-31	Traex Bus Box Cover, 20" X 15", Fits 1521 & 1527 Bus Boxes, Gray
1522-C05	Traex Color Mate Food Storage Box Recessed Cover
1527-01	Traex Standard Bus Box, 1 Comp, 21-3/4" X 15-1/2" X 7" Chocolate
1527-05	Traex Standard Bus Box, 1 Comp, 21-3/4" X 15-1/2" X 7" White
1527-31	Traex Standard Bus Box, 1 Comp, 21-3/4" X 15-1/2" X 7" Gray
1527B-06	Traex Standard Bus Box, 1 Comp, 21-3/4" X 15-1/2" X 7" Black
0644N	Redco Tomato Pro Tomato Slicer, 1/4" Cut Size, Straight Blades
101-1-1	Drop-In Sink, 1 Compartment, 10" X 14" X 10" Deep, 3-1/2" Drain
131-8	Drop-In Sink, 1 Comp, 9-3/8" X 11-3/4" X 4" Deep, 2" Drain
131-9	Drop-In Sink, 1 Comp, 9-3/8" X 11-3/4" X 6-1/2" Deep, 2" Drain
502N	Onion King Onion Cutter, 3/8"
PSG4-SF120	Panini Sandwich Grill, Electric, Single, 13-1/2" X 9-1/4" Cast-Iron
PSG4-SSF120	Panini Sandwich Grill, Electric, Single, 17" X 16" Aluminum
TR11	Rack Max Dishwasher Stock Rack, Glass, 20 Comp (3-15/16")
TR12	Rack-Master 30 Compartment Glass Rack, 19-3/4" Sq. X 4"H
TR13C	Traex Full Size Low Profile Glass Rack, (36) Compartment 2-7/8"
TR2	Traex Full Size Flatware Rack Beige, 19-3/4"W X 19-3/4"D X 4"H
TR3	Traex Full Size Peg Rack, 3-1/4"H, 9 Rows X 9 Rows
TR4	Traex Full Size Cup Rack, (16) Compartment (4-7/16")
TR5	Rack-Master Dishwasher Rack 20 Compartment (3-17/32")
TR6	Rack-Master Dishwasher Rack 25 Compartment (3-17/32")
TR7	Rack-Master Dishwasher Rack 36 Compartment (2-15/16")
TR8	Rack-Master Dishwasher Rack 16 Compartment (4-7/16")
TRA	Rack-Master Dishwasher Rack Extender Full-Size 1-9/16"H
TRB	Rack-Master Dishwasher Rack Extender 1-9/16"H, (25) Comp
TRC	Traex Rack Max Dishwasher Rack Extender, Full-Size, (36) Comp
TRD	Rack-Master Dishwasher Rack Extender 1-9/16"H, (16) Comp
TRF	Rack-Master Dishwasher Rack Extender 1-9/16"H, (9) Comp
TRG	Traex Rack Max Dishwasher Rack Extender, Full-Size, (20) Comp
TRH	Rack-Master 30 Comp Rack Extender, 19-3/4" X 1-9/16", 3-3/16"



TR11



TR4



TR12



TR5



TR13C



TR6



TR2



TRA



TR3



TRH



470903



460606



446003



460606



4037300



4037800



4039102



4039202



608002

ITEM NO. DESCRIPTION

STORE 'N POUR

PS601N00	Quart Complete, 32 oz
PS701B00	Half-Gallon Complete, 64 oz
PS801B00	Gallon Complete, 128 oz

TABLETOP

460603	Salad Tongs, 6"L, Black, NSF
460606	Salad Tongs, 6"L, Beige, NSF
460903	Salad Tongs, 9"L, Black, NSF
470903	Utility Tongs, 9"L, Black, NSF
446003	Salad Spoon, 1/2 oz, 9"L, Black, NSF
029503	Ladle, 9-1/2"L, 1 oz, Black, NSF
KL20002	Kingline Dinner Plate, 9", Narrow Rim, White

TUMBLERS

521207	Stackable Tumbler, 12 oz, SAN, Clear, NSF
522007	Stackable Tumbler, 20 oz, SAN, Clear, NSF
368200	Lobby Corn Broom, 40" Tall, Wood Handle
4688500	Duo-Sweep, Heavy Duty Angle Broom

BRUSHES

4015200	Fryer Brush, 23"L
4029000	Broiler Master Brush, 30-1/2"L, Made in USA
4029400	Broiler King Brush, 48"L
4037300	Basting Brush, 1-1/2" wide, Made in USA
4037400	Basting Brush, 2" wide, Made in USA
4037500	Basting Brush, 3" wide, Made in USA
4037800	Pastry/Basting Brush, 2" Wide
4039102	Pastry Brush, 2" wide, Made in USA
4039202	Pastry Brush, 3" wide, Made in USA
4040102	Pastry/Basting Brush, 2" wide
4040202	Pastry/Basting Brush, 3" wide
4050000	Utility Brush, 20"L
4067100	Scratch Brush, 11-1/2"L
4067300	Urn Brush, 25"L

STEAM TABLE PANS

608002	DuraPan Steam Table Pan, Full Size, 8.8 Qt., 2-1/2"
608004	DuraPan Steam Table Pan, Full Size, 12.5 Qt., 4"
608006	DuraPan Steam Table Pan, Full Size, 22 Qt., 6"
608122	DuraPan Steam Table Pan, 1/2-Size, 4 Qt., 2-1/2"
608124	DuraPan Steam Table Pan, 1/2-Size, 6 Qt., 4"
608126	DuraPan Steam Table Pan 1/2 Size 6"
608132	DuraPan Steam Table Pan, 1/3-Size, 2.6 Qt., 2-1/2"
608134	DuraPan Steam Table Pan, 1/3-Size, 4 Qt., 4"
608136	DuraPan Steam Table Pan, 1/3-Size, 6 Qt., 6"
608144	DuraPan Steam Table Pan, 1/4-Size, 4.5 Qt., 4"
608162	DuraPan Steam Table Pan, 1.10 Qt., 1/6-Size, 2-1/2"
608164	DuraPan Steam Table Pan, 1/6-Size, 2 Qt., 4"
608166	DuraPan Steam Table Pan, 1/6-Size, 2.8 Qt., 6"
608194	DuraPan Steam Table Pan, 1/9-Size, 1.10 Qt., 4"



608162



608132



608136



608006



608164



608166



KL20002



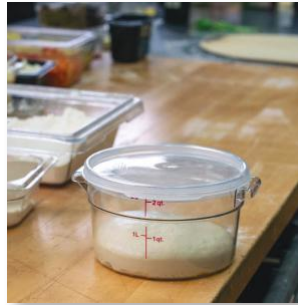
521207



PS701B00

CAMBRO[®]

MANUFACTURING COMPANY



ITEM NO. DESCRIPTION

SQUARE FOOD STORAGE CONTAINERS, CLEAR

2SFSCW135	2 qt. Container
4SFSCW135	4 qt. Container
6SFSCW135	6 qt. Container
8SFSCW135	8 qt. Container
12SFSCW135	12 qt. Container
18SFSCW135	18 qt. Container
22SFSCW135	22 qt. Container

COVERS

SFC2452	Seal Cover for 2 & 4 qt. containers
SFC6451	Seal Cover for 6 & 8 qt. containers
SFC12453	Seal Cover for 12, 18 & 22 qt. containers

ROUND FOOD STORAGE CONTAINERS, NATURAL WHITE

RFS2148	2 qt. Container
RFS4148	4 qt. Container
RFS6148	6 qt. Container
RFS8148	8 qt. Container
RFS12148	12 qt. Container
RFS18148	18 qt. Container
RFS22148	22 qt. Container

COVERS

RFSC2148	Cover for 2 & 4 qt. containers
RFSC6148	Cover for 6 & 8 qt. containers
RFSC12148	Cover for 12, 18 & 22 qt. containers

ROUND FOOD STORAGE CONTAINERS, CLEAR

RFSCW2135	2 qt. Container
RFSCW4135	4 qt. Container
RFSCW6135	6 qt. Container
RFSCW12135	12 qt. Container
RFSCW18135	18 qt. Container
RFSCW22135	22 qt. Container

COVERS

RFSCWC2135	Cover for 2 & 4 qt. containers
RFSCWC6135	Cover for 6 & 8 qt. containers
RFSCWC12135	Cover for 12, 18 & 22 qt. containers

CAMWEAR FOOD PANS, COLD

12CW135	Full Size, 2" Depth
14CW135	Full Size, 4" Depth
16CW135	Full Size, 6" Depth
22CW135	Half Size, 2" Depth
24CW135	Half Size, 4" Depth
26CW135	Half Size, 6" Depth
34CW135	Third Size, 4" Depth
36CW135	Third Size, 6" Depth
64CW135	Sixth Size, 4" Depth
66CW135	Sixth Size, 6" Depth
94CW135	Ninth Size, 4" Depth

COVERS

10CWCH135	Full Size Pan Cover w/Handle
10CWCHN135	Full Size Pan Cover Notched w/Handle
20CWCH135	Half Size Pan Cover w/Handle
20CWCHN135	Half Size Pan Cover Notched w/Handle
30CWCH135	Third Size Pan Cover w/Handle
30CWCHN135	Third Size Pan Cover Notched w/Handle
60CWCH135	Sixth Size Pan Cover w/Handle
90CWC135	Ninth Size Pan Cover

CAMTREAD SERVING TRAYS WITH NON-SKID SURFACE

1400CT110	Serving Tray, 14" Round
1600CT110	Serving Tray, 16" Round
2700CT110	Serving Tray, 22" x 26 7/8" Oval

OTHER

WW250135	Camliter Beverage Decanter, 1/4 Liter
P600CW135	Pitcher, 60 oz., Polycarbonate, NSF
9TGS110	Serving Tongs, 9", Black, NSF
DSPR6148	Beverage Dispenser, 6 Gallon



BDGF-90
BDGF-120



BDGF-150



BDGR-24



BDGR-36



BDGR-60



BDGR-6024G



BDGR-3624



BDSAL-RMK



BDECTG-16



BDECTG-24



BDECTG-36



BDECTG-48



BDCTG-24T



BDCTG-36T



BDCTG-48T



BDCTG-60T



BDCTC-24



BDCTC-36



BDCTC-48



BDECTC-16/NG



BDECTC-24/NG



BDECTC-36/NG



BDECTC-48/NG



BDCTH-12/NG



BDCTH-24



BDCTH-36



BDCTSP-1

ITEM NO. DESCRIPTION

FRYERS

BDGF-90/NG	Fryer, 35-40 lbs., 90,000 BTU, Natural Gas
BDGF-90/LPG	Fryer, 35-40 lbs., 90,000 BTU, LP Gas
BDGF-120/NG	Fryer, 45-50 lbs., 120,000 BTU, Natural Gas
BDGF-120/LPG	Fryer, 45-50 lbs., 120,000 BTU, LP Gas
BDGF-150/NG	Fryer, 65-70 lbs., 150,000 BTU, Natural Gas
BDGF-150/LPG	Fryer, 65-70 lbs., 150,000 BTU, LP Gas

RANGES

BDGR-24/NG	Range, 24", 4 Burners, Standard Oven, Natural Gas
BDGR-36/NG	Range, 36", 6 Burners, Standard Oven, Natural Gas
BDGR-60/NG	Range, 60", 10 Burners, (2) Standard Ovens, Natural Gas
BDGR-6024G/NG	Range, 60", 6 Burners & 24" Griddle, (2) Standard Ovens, Natural Gas
BDGR-3624	Range, 36", 2 Burners & 24" Griddle, Standard Oven, Natural Gas
BDSAL-36/NG	Salamander Broiler, 36", 36,000 BTU, Natural Gas
BDSAL-RMK	Range Mount Kit (for BDSAL-36/NG) - Not Shown

GRIDDLES (Includes Tips for Field Conversion to LP Gas)

BDECTG-16/NG	Griddle, 16", Manual Controls, 5/8" Thick Plate, Natural Gas
BDECTG-24/NG	Griddle, 24", Manual Controls, 5/8" Thick Plate, Natural Gas
BDECTG-36/NG	Griddle, 36", Manual Controls, 5/8" Thick Plate, Natural Gas
BDECTG-48/NG	Griddle, 48", Manual Controls, 5/8" Thick Plate, Natural Gas
BDCTG-24T	Griddle, 24", Thermostatic Controls, 1" Thick Plate, Natural Gas
BDCTG-36T	Griddle, 36", Thermostatic Controls, 1" Thick Plate, Natural Gas
BDCTG-48T	Griddle, 48", Thermostatic Controls, 1" Thick Plate, Natural Gas
BDCTG-60T	Griddle, 60", Thermostatic Controls, 1" Thick Plate, Natural Gas

CHARBROILERS (Includes Tips for Field Conversion to LP Gas)

BDCTC-24	Charbroiler, 24", Radiant Heat, 4 Burner Controls, Natural Gas
BDCTC-36	Charbroiler, 36", Radiant Heat, 6 Burner Controls, Natural Gas
BDCTC-48	Charbroiler, 48", Radiant Heat, 8 Burner Controls, Natural Gas
BDECTC-16/NG	Charbroiler, 16", Radiant Heat, 1 Burner Control, Natural Gas
BDECTC-24/NG	Charbroiler, 24", Radiant Heat, 2 Burner Controls, Natural Gas
BDECTC-36/NG	Charbroiler, 36", Radiant Heat, 3 Burner Controls, Natural Gas
BDECTC-48/NG	Charbroiler, 48", Radiant Heat, 4 Burner Controls, Natural Gas

HOTPLATES (Includes Tips for Field Conversion to LP Gas)

BDCTH-12/NG	Hotplate, 12", 2 Burners, Natural Gas
BDCTH-24	Hotplate, 24", 4 Burners, Natural Gas
BDCTH-36	Hotplate, 36", 6 Burners, Natural Gas
BDCTSP-1/NG	Stock Pot Burner, 3-Ring Burner, 80,000 BTU, Natural Gas



Browne
FOODSERVICE



69501



57502



57505



4781



1290



2754



22002



21212



57567



22114



57124



22122

ITEM NO.	DESCRIPTION
1260	Rotary Flour Sifter, 8 Cups, 6" X 6-1/2", Handled
1290	Double Jigger, 1/2 - 1 Oz., Satin Finish Interior, Stainless
1309	Skimmer, 9" Dia. X 17-1/2"L Handle (26-1/2" O.A.L.)
2752	Conventional Serving Spoon, 11"L, Perforated, Grooved Handle
2754	Conventional Serving Spoon, 11"L, Slotted, Grooved Handle
2762	Conventional Serving Spoon, 13"L, Perforated, Grooved Handle
2764	Conventional Serving Spoon, 13"L, Slotted, Grooved Handle
2772	Conventional Serving Spoon, 15"L, Perforated, Grooved Handle
2774	Conventional Serving Spoon, 15"L, Slotted, Grooved Handle
3300	Griddle Screen Holder, 5" X 3", Secure Clamp
4203	Broiler/Grill Brush, 11", Stiff Brass Wire Bristles
4512	Utility Tongs, 12", Coil Spring Operated, Scalloped Edges
4513	Utility Tongs, 16", Coil Spring Operated, Scalloped Edges
4781	Serving Spoon, 21"L, Solid, Reinforced Handle, Deep Groove
19948	Mixing Paddle, 4-1/2" X 8" Paddle, 48" O.A.L., Stainless Steel
21212	Steam Table Pan, 1/2 Size, Perforated, 4.3 Qt.
22002	Steam Table Pan, Full Size, 8.2 Qt., 20-3/4"L X 12-3/4"W X 2-1/2"
22114	Steam Table Pan, Full Size, Perforated, 14.8 Qt.
22122	Steam Table Pan, 1/2 Size, 4.3 Qt., 12-3/4"L X 10-3/8"W X 2-1/2"
22132	Steam Table Pan, 1/3 Size, 2.6 Qt., 12-3/4"L X 6-7/8"W X 2-1/2"
22142	Steam Table Pan, 1/4 Size, 2.2 Qt., 10-3/8"L X 6-3/8"W X 2-1/2"
22144	Steam Table Pan, 1/4 Size, 3.1 Qt., 10-3/8"L X 6-3/8"W X 4"
22146	Steam Table Pan, 1/4 Size, 4.6 Qt., 10-3/8"L X 6-3/8"W X 6"
22162	Steam Table Pan, 1/6 Size, 1.2 Qt., 6-7/8"L X 6-3/8"W X 2-1/2"
22164	Steam Table Pan, 1/6 Size, 2.1 Qt., 6-7/8"L X 6-3/8"W X 4"
22192	Steam Table Pan, 1/9 Size, 0.8 Qt., 6-7/8"L X 4-1/4"W X 2-1/2"
22194	Steam Table Pan, 1/9 Size, 1.1 Qt., 6-7/8"L X 4-1/4"W X 4"
22242	Stack-A-Way Steam Table Pan, 1/2 Size Long, 2-1/2"
57124	Cake Stand, 12" Dia., Stainless Steel
57502	Cocktail Shaker Set, 3-Piece, 8 Oz., 2-7/10" Dia. X 6"H
57505	Cocktail Shaker, 15 Oz., 3-3/8" Dia. X 4-1/2"H
57521	Ice Chipper, 7-1/2"L, 4-1/2"L Carbon Steel Blade
57567	Eclipse Tongs, 9", Offset, 18/8 Stainless Steel, Mirror Finish
57568	Eclipse Tongs, 12", Offset, 18/8 Stainless Steel, Mirror Finish
69501	Wine Bucket, 8-3/4" Dia. X 9-1/2"H, 18/8 Stainless Steel
69501	Wine Bucket, 8-3/4" Dia. X 9-1/2"H, 18/8 Stainless Steel



VOLLRATH®



30088

ITEM NO. DESCRIPTION

POTS & PANS

3501	Optio Stock Pot With Cover, 8 Quart, 8-1/2" Dia., 8" Deep
3504	Optio Stock Pot With Cover, 18 Quart, 11" Dia., 11" Deep
3506	Optio Stock Pot With Cover, 27 Quart, 12-1/2" Dia., 12-1/2" Deep
3800	Optio Sauce Pan With Cover, 1 Quart, 5-1/2" Dia., 2-3/4" Deep
3801	Optio Saute' Pan, 2-1/2 Quart, 8" Dia., 3" Deep, Induction Ready
3802	Optio Sauce Pan With Cover, 2-3/4 Quart, 7" Dia., 4-1/8" Deep
3803	Optio Sauce Pan With Cover, 4 Quart, 8" Dia., 4-3/4" Deep
3804	Optio Saute' Pan, 4 Quart, 9-1/2" Dia., 4-1/4" Deep, Induction Ready
3809	Optio Fry Pan, 9-1/2" Dia., 1-3/4" Deep, Induction Ready, Welded Handle
3811	Optio Fry Pan, 11" Dia., 2" Deep, Induction Ready, Welded Handle
3812	Optio Fry Pan, 12-1/2" Dia., 2-1/4" Deep, Induction Ready, Welded Handle
3820	Optio Deluxe Cookware Set, (6) Piece, Includes
3902	Optio Sauce Pot With Cover, 6-3/4 Quart, 9-1/2" Dia., 6-3/8" Deep
7007	Arkadia Fry Pan, 7", Riveted Handle, 3000 Series Aluminum, Natural Finish
7008	Arkadia Fry Pan, 8", Riveted Handle, 3000 Series Aluminum, Natural Finish
7010	Arkadia Fry Pan, 10", 3000 Series Aluminum, Natural Finish

BAKEWARE

4412	Wear-Ever Bake & Roast Pan, 4-1/2 Quart, 9-3/4" X 13-1/4" X 2-1/4"
4432	Bake Pan, 19-3/4" X 21-3/4" X 2-1/4", 3004 Aluminum Alloy, NSF
5228	Sheet Pan, 1/8 Size, Tapered Design, 1"H, 16 Gauge Aluminum Alloy
5303	Wear-Ever Sheet Pan, 1/2 Size, 18"W X 13"D X 1"H, 18 Gauge Aluminum Alloy

FOOD PREP

6004	Redco King Kutter Food Processor, Manual, Clamp Base
6006	King Kutter Food Processor, Manual, Clamp Base
15000	Redco Instacut 3.5 Dicer, Manual, 1/4" Dice, Table Top, NSF
15062	Redco Instacut 3.5 Replacement Blade Assembly, For 1/4" Dicer, NSF

FOOD PANS

20028	Wire Grate, For Full Size Super Pan V, 300 Series Stainless Steel
20300	Super Pan V False Bottom, For Steam Table Pan, 1/3 Size, 3/8" Drain Holes
20400	Super Pan V False Bottom, For Steam Table Pan, 1/4 Size, 3/8" Drain Holes
30013	Super Pan V Food Pan, Perforated Bottom, Full Size, 1-1/4" Deep, 22 Gauge
30022	Super Pan V Food Pan, Full Size, 2-1/2" Deep, 8.3 Qt Capacity, 22 Gauge
30023	Super Pan V Food Pan, Perforated Bottom, Full Size, 2-1/2" Deep, 22 Gauge
30042	Super Pan V Food Pan, Full Size, 4" Deep, 14 Qt Capacity, 22 Gauge
30043	Super Pan V Food Pan, Perforated, Full Size, 4" Deep, 22 Gauge
30062	Super Pan V Food Pan, Full Size, 6" Deep, 22 Gauge, 21 Qt Capacity
30088	Super Pan Transport Pan, Full Size, 8" Deep, 22 Qt Capacity
30220	Super Pan Steam Table Pan, 1/2 Size, 2-1/2" Deep, 4.3 Qt Capacity
30222	Super Pan V Food Pan, 1/2 Size, 2-1/2" Deep, 4.3 Qt Capacity, 22 Gauge
30223	Super Pan V Food Pan, Perforated Bottom, 1/2 Size, 2-1/2" Deep, 22 Gauge
30242	Super Pan V Food Pan, 1/2 Size, 4" Deep, 6.7 Qt Capacity, 22 Gauge
30243	Super Pan V Food Pan, Perforated, 1/2 Size, 4" Deep, 22 Gauge
30262	Super Pan V Food Pan, 1/2 Size, 6" Deep, 10 Qt Capacity, 22 Gauge
30342	Super Pan V Food Pan, 1/3 Size, 4" Deep, 4.1 Qt Capacity, 22 Gauge
30362	Super Pan V Food Pan, 1/3 Size, 6" Deep, 6.1 Qt Capacity, 22 Gauge
30422	Super Pan V Food Pan, 1/4 Size, 2-1/2" Deep, 1.8 Qt Capacity, 22 Gauge
30442	Super Pan V Food Pan, 1/4 Size, 4" Deep, 3 Qt Capacity, 22 Gauge
30462	Super Pan V Food Pan, 1/4 Size, 6" Deep, 4.5 Qt Capacity, 22 Gauge
30512	Super Pan V Food Pan, 1/2 Size Long, 1-1/4" Deep, 1.9 Qt Capacity, 22 Gauge
30522	Super Pan V Food Pan, 1/2 Size Long, 2-1/2" Deep, 3.8 Qt Capacity, 22 Gauge
30542	Super Pan V Food Pan, 1/2 Size Long, 4" Deep, 6 Qt Capacity, 22 Gauge
30622	Super Pan V Food Pan, 1/6 Size, 2-1/2" Deep, 1.2 Qt Capacity, 22 Gauge
30642	Super Pan V Food Pan, 1/6 Size, 4" Deep, 1.8 Qt Capacity, 22 Gauge



30043



30223



30042



30062



30243



30242



30342



30262



30522



30362



12189CW135



18266CW135



1826CCW135



182615CW135



1218CCW135



12186P148



12189P148



18266P148



18269P148



182615P148



1218CP148



1826CP148



96SKRC135 96SKRD135 96SKRM135



UPC300110

UPC300131

ITEM NO. DESCRIPTION

FOOD STORAGE BOXES, CLEAR

12186CW135	Food Storage Box, 12" x 18" x 6", 3 Gallon
12189CW135	Food Storage Box, 12" x 18" x 9", 4.75 Gallon
18266CW135	Food Storage Box, 18" x 26" x 6", 8.75 Gallon
18269CW135	Food Storage Box, 18" x 26" x 9", 13 Gallon
182615CW135	Food Storage Box, 18" x 26" x 15", 22 Gallon

CLEAR COVERS

1218CCW135	Cover for Food Storage Box, 12" x 18"
1826CCW135	Cover for Food Storage Box, 18" x 26"

FOOD STORAGE BOXES, WHITE

12186P148	Food Storage Box, 12" x 18" x 6", 3 Gallon
12189P148	Food Storage Box, 12" x 18" x 9", 4.75 Gallon
18266P148	Food Storage Box, 18" x 26" x 6", 8.75 Gallon
18269P148	Food Storage Box, 18" x 26" x 9", 13 Gallon
182615P148	Food Storage Box, 18" x 26" x 15", 22 Gallon

WHITE COVERS

1218CP148	Cover for Food Storage Box, 12" x 18"
1826CP148	Cover for Food Storage Box, 18" x 26"

96SKRC135	Camwear Dredge, 10 oz., Cheese Lid
96SKRD135	Camwear Dredge, 10 oz., Salt & Pepper Lid
96SKRM135	Camwear Dredge, 10 oz., Medium Ground Lid

UPC300110	Ultra Pan Carrier, Front Loading, 36 qt. Capacity, Black, NSF
UPC300131	Ultra Pan Carrier, Front Loading, 36 qt. Capacity, Brown, NSF
UPC400110	Ultra Pan Carrier, Front Loading, 60 qt. Capacity, Black, NSF
UPC400131	Ultra Pan Carrier, Front Loading, 60 qt. Capacity, Brown, NSF

EPP400110	Cam GoBox Insulated Food Pan Carrier, 90.9 qt. Capacity, Black
CD400110	Camdolly, for Food Pan Carriers, 300 lb. Capacity, Black, NSF

SHELVING

CBSK2442V580	Camshelving Basics Plus Shelf Kit, 24"W x 42"L, Brushed Graphite
CBSK2448V580	Camshelving Basics Plus Shelf Kit, 24"W x 48"L, Brushed Graphite
CBSK2460V580	Camshelving Basics Plus Shelf Kit, 24"W x 60"L, Brushed Graphite
CBPK2472580	Camshelving Basics Plus Post Kit, 24"W x 72"L, Brushed Graphite



UPC400110

UPC400131



EPP400110



CD400110



CBSK2442V580
CBSK2448V580
CBSK2460V580



CBPK2472580



84101002
84101023
84101102
84101123



84102002
84102023
84102123



84103223
84103302
84103323



84104423
84104523



KPP97GN



KPP97RD



KPP196GN



KPP196RD



SI2000



SI5000



SI6000



RCU64V2



RCU128V2

ITEM NO. DESCRIPTION

BRONCO CONTAINERS

84101002	Round Waste Bin Trash Container, 10 Gallon - White
84101023	Round Waste Bin Trash Container, 10 Gallon - Gray
84101102	Round Waste Bin Trash Container Lid, 10 Gallon - White
84101123	Round Waste Bin Trash Container Lid, 10 Gallon - Gray
84102002	Round Waste Bin Trash Container, 20 Gallon - White
84102023	Round Waste Bin Trash Container, 20 Gallon - Gray
84102123	Round Waste Bin Trash Container Lid, 20 Gallon - Gray
84103223	Round Waste Bin Trash Container, 32 Gallon - Gray
84103302	Round Waste Bin Trash Container Lid, 32 Gallon - White
84103323	Round Waste Bin Trash Container Lid, 32 Gallon - Gray
84104423	Round Waste Bin Trash Container, 44 Gallon - Gray
84104523	Round Waste Bin Trash Container Lid, 44 Gallon - Gray
84105523	Round Waste Bin Trash Container, 55 Gallon - Gray

KPP97GN Kleen-Pail Pro, 3 Quart - Green

KPP97RD Kleen-Pail Pro, 3 Quart - Red

KPP196GN Kleen-Pail Pro, 6 Quart - Green

KPP196RD Kleen-Pail Pro, 6 Quart - Red

SI2000 Scoop Caddie Saf-T-Ice - Black

SI5000 Saf-T-Scoop & Guardian 6 - 10 oz. - Blue

SI6000 Saf-T-Ice Tote - Blue

RCU64V2 Rapi-Kool Plus 64 oz. - Blue

RCU128V2 Rapi-Kool Plus 128 oz. - Blue

DISHWASHER RACKS IN CARLISLE BLUE

C2220A14	E-Z Glide™ Open Aluminum Dolly wo/Handle, 20 $\frac{5}{8}$ " x 20 $\frac{5}{8}$ " x 6 $\frac{1}{2}$ "
RB14	OptiClean™ Open Bowl Rack 3 $\frac{3}{4}$ "
RF14	OptiClean™ Flatware Rack 18 $\frac{1}{4}$ " Compartment
RSP14	OptiClean™ Bakery Tray & Sheet Pan Rack 3 $\frac{3}{4}$ "
RTP14	OptiClean™ All-Purpose Peg Dish Rack 3" Pegs
RG1614	OptiClean™ 16-Compartment Divided Glass Rack 3 $\frac{3}{4}$ "
RG25-314	OptiClean™ 25-Compartment Divided Glass Rack with 3 Extenders 8 $\frac{3}{4}$ "
RG3614	OptiClean™ 36-Compartment Divided Glass Rack 3 $\frac{3}{4}$ "
RG4914	OptiClean™ 49-Compartment Divided Glass Rack 3 $\frac{3}{4}$ "



C2220A14



RB14



RF14



RSP14



RTP14



RG1614



RG25-314



RG3614



RG4914



IH1/3DLT



IH1FDLT



EC-12-1-JA



IH1/6DLT



ML-249-W



SD-05-CB



SW-1428-1-SAN-CL



SW-1424-1-SAN-CL



SW-1405-1-SAN-CL

ITEM NO. DESCRIPTION

4-22453	Basket, 14-3/4" X 5" X 2-1/2" Long, Oval, Chrome
EC-12-1-JA	Eco-Takeout's To Go Food Container, 9" X 9" X 2-3/4" Deep, 3 Comp
IH1/3DLT	Bugambilia Food Pan, 1/3 Size, 3.2 Qt., 12-4/5"L X 6-9/10"W, 3-9/10" Deep
IH1/6DLT	Bugambilia Food Pan, 1/6 Size, 2.1 Qt., 6-9/10"L X 6-3/10"W, 3-9/10" Deep
IH1/6DWW	Bugambilia Food Pan, 1/6 Size, 2.1 Qt., 6-9/10"L X 6-3/10"W, 3-9/10" Deep
IH1FDLT	Bugambilia Food Pan, Full Size, 13.7 Qt., 20-9/10"L X 12-4/5"W, 3-9/10" Deep
ML-249-W	Siciliano Bowl, 12.8 Qt. (14 Qt. Rim Full), 16" X 5"H, Square, Break-Resistant
ML-80-BK	Milano Plate, 7-1/2" Dia., Break-Resistant, Dishwasher Safe, Melamine, Black
SD-05-CB	Viva Mexico Salsa Dish, 5 Oz., 4" Dia. X 1-1/4"H, Break-Resistant
SDB-32-PC-RACK	Salad Dressing Rack, 4 Slots, Polycarbonate, Clear
SW-1405-1-SAN-CL	Margarita Glass, 16 Oz. (17.35 Oz. Rim Full), 5" Dia. X 6-1/4"H, SAN
SW-1424-1-SAN-CL	Roc N' Roll Rocks Glass, 12 Oz., 3" Dia. X 4-3/4"H
SW-1428-1-SAN-CL	Schooner, 36 Oz. (38.85 Oz. Rim Full), 5-1/4" Dia. x 8"H, SAN, Clear
SW-1429-CLEA	Rocks Glass, 10 oz., Rock'N Roll, SAN, Clear (SOLD EACH)
SW-1446-1-TRITAN-CL	Wine Glass, 15 Oz. (16 Oz. Rim Full), 3-3/4" Dia. x 8-1/2"H
SW-1465-CL-PL-LOGO	"Pilsner, 23 Oz. (24 Oz. Rim Full), 3-1/4" Dia. X 9"H, Polycarbonate



B-0156-CR-MOD



B-0221



B-0156



B-0325



B-0230-LN



B-0291



B-0342



B-0655-BSTP

ITEM NO. DESCRIPTION

B-0102	Pot And Glass Filler, Automatic Shut-Off Valve, Plain End Bent Nozzle
B-0113-B	Pre-Rinse Unit, Spring Action Gooseneck, 4" Center Deck Faucet
B-0113-CR	EasyInstall Pre-Rinse Unit, Spring Action Gooseneck
B-0113-R	EasyInstall Pre-Rinse Unit, Spring Action, Single Hole Base, 1.15 GPM
B-0123-CR-J	EasyInstall Pre-Rinse Unit, Deck Mount Base, Spring Action Gooseneck
B-0133-ADF12-B	EasyInstall Pre-Rinse Unit, Spring Action, Wall Mount Base, 8" Centers
B-0133-ADF12-BC	EasyInstall Pre-Rinse Unit, 8" Wall Mount, 12" Swing Nozzle
B-0133-B	Pre-Rinse Unit, 8" O.C. Wall Mounted Faucet, 1/2" IPS Female Inlets
B-0133-CR-B	EasyInstall Pre-Rinse Unit, 8" Centers, Wall Mount Base, Spring Action
B-0156	Add On Faucet For Pre-Rinse Units, 12" Nozzle, Includes 3" Nipple
B-0156-CR MOD	Add-On Faucet, Ceramas Cartridge, 12" Swing Nozzle
B-0221	Deck Mixing Faucet With Swing Nozzle, 12" Swing Nozzle, 8" Centers
B-0230-LN	Sink Mixing Faucet, Wall Mounted, 8" Centers On Sink Faucet
B-0231	Sink Mixing Faucet With 12" Swing Nozzle, Wall Mounted, 8" Centers
B-0291	Kettle & Pot Sink Faucet, Big-Flo, Wall Mounted 8" Centers, 3/4" IPS
B-0292	Kettle & Pot Sink Faucet, Big-Flo, Wall Mounted 8" Centers, 3/4" IPS
B-0325	Deck Mixing Faucet W/Swivel Gooseneck, 11 3/4" High
B-0330	Faucet, Splash Mounted, Rigid Gooseneck, Wall Mounted, 10 1/4" High
B-0342	Faucet, Splash Mounted, 4" O.C., Rigid Gooseneck, 1/2" IPS Female
B-0592	Pot Filler Faucet, Splash-Mounted Single Valve, Double-Joint Nozzle, 18"
B-0594	Pot Filler Faucet, Splash-Mounted Single Valve, Double-Joint Nozzle, 24"
B-0655-BSTP	Service Sink Faucet, 8" Centers-Adjustable From 7 3/4" To 8 1/4"
B-0655-BSTR	Service Sink Faucet, 8" Centers-Adjustable From 7 3/4" To 8 1/4"
B-0660-RGH	Service Sink Faucet, 8" Centers, 9" From Back Of Inlets To Center
B-0665-RGH	Service Sink Faucet, 8" Centers, 2 3/8" Clearance From Wall To Center
HG-4C-48K	Gas Connector Kit, 1/2" Inside Diameter, 48" Long, (1) Quick Disconnect
HG-4D-36K	Gas Connector Kit, 3/4" Inside Diameter, 36" Long, (1) Quick Disconnect
HG-4D-48K	Gas Connector Kit, 3/4" Inside Diameter, 48" Long, (1) Quick Disconnect
HG-4E-48K	Gas Connector Kit, 1" Inside Diameter, 48" Long, (1) Quick Disconnect



HG-4C-48K



B-0660-RGH



TE10FT



TE32FT



THD32



TS32



TS5



TS50



3506FS



3512FS



5924



5925NFS



8791



9848EFDA



9877FDA



9999N

ITEM NO. DESCRIPTION

SCALES

TE10FT Portion Control Scale, Digital, 11 lb.

TE32FT Portion Control Scale, Digital, 2 lb.

THD32 Mechanical Scale, Analog, 32 oz.

TS32 Portion Control Scale, Analog, 32 oz.

TS5 Portion Control Scale, Analog, 5 lb.

TS50 Portion Control Scale, Analog, 50 lb.

THERMOMETERS

3506FS Oven Thermometer, 2½" dial, NSF

3512FS Instant Read Thermometer, 1" dial, NSF

5924 Refrigerator/Freezer Thermometer, 3" dial, NSF

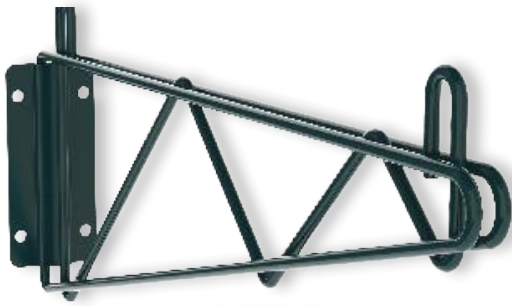
5925NFS Refrigerator/Freezer Thermometer, Glass Tube, NSF

8791 Dishwasher Thermometer, Digital, NSF

9848EFDA Pocket Thermometer, Pen Style, NSF

9877FDA Compact Thermometer, Digital, NSF

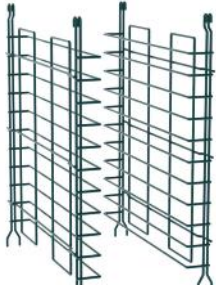
9999N Probe Wipes, 100 single use wipes

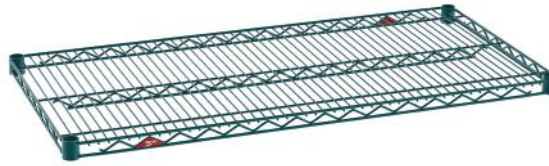
1WD21K3



C5E9-CFC-U



20SNK3



2142NK3



A1848NK3



CCR36SWPREP



EZ1836NK3-4



EZPR2448NK3-4



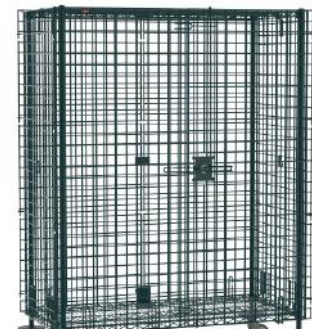
MQ1848G



MS1824-FSNK

ITEM NO. DESCRIPTION

1WD21K3	Direct Wall Mount Bracket, For NK3
20SNK3	Super Erecta Tray Slide, 20"W, Metroseal 3 Epoxy-Coated Finish
2142NK3	Super Erecta Shelf, Wire, 21" W, 42" L, Metroseal 3 Finish, Plastic Split
2148NK3	Super Erecta Shelf, Wire, 21" W, 48" L, Metroseal 3 Finish, Plastic Split
2WD21K3	Direct Wall Mount Double Bracket, For NK3
3060NK3	Super Erecta Super Wide Shelf, Wire, 60"W X 30"D, Metroseal Green
3072NK3	Super Erecta Super Wide Shelf, Wire, 72"W X 30"D, Metroseal Green
86PK3	Super Erecta SiteSelect Post, 86-5/8" H, Adjustable Leveling Bolt
9990P	Super Erecta Label Holder, 3" X 1-1/4", Gray, Snap-On Plastic Holder
9993Z	Super Erecta Foot Plate, Zinc Finish
A1848NK3	Shelf, 18" X 48", Super Adjustable Metroseal 3 Green Finish, Anti-Bacterial
BINRL18	Try Slide Clip F/ Tray Slide 20" (Use W/Item# 77048)
C5E9-CFC-U	C5 E Series Heated Holding & Proofing Cabinet, Mobile, Full Height
CCR36SWPREP	Smartwall Prep Station Kit 36"
EZ1836NK3-4	Super Erecta Convenience Pak Shelving Unit, 36"W x 18"D x 74"H
EZ1848NK3-4	Super Erecta Convenience Pak Shelving Unit Assembly, 4 Shelves
EZ1860NK3-4	Super Erecta Convenience Pak Shelving Unit, 60"W x 18"D x 74"H
EZ2448NK3-4	Super Erecta Convenience Pak Shelving Unit Assembly
EZ2460NK3-4	Super Erecta Convenience Pak Shelving Unit Assembly, 4 Shelves
EZPR2448NK3-4	Super Erecta Pro Convenience Pak Shelving Unit, 48"W x 24"D x 74"H
MS1824-FSNK	PrepMate MultiStation, (1) 18" x 24" SS Shelf & (1) MetroSeal Epoxy
MQ1848G	MetroMax Q Shelf, 18" W, 48" L, Open Grid Polymer With Microban Epoxy
MX63P	Polymer Trilobal Post, 62-3/16"H, For Stationary Use Or With A Dolly
PCDV9	Poker Chip Dish Dolly Cover, PCDV9
SEC35EK3	Super Erecta Security Unit, Mobile, Metroseal 3 Epoxy-Coated Finish



SEC35EK3

nemco[®]



6101A



6055A



77316-10A



6000A-2B



6000A-2



6310-2



6150-24-CP



77316-13A



77316-13A

ITEM NO.	DESCRIPTION
55825	Easy Grill Scraper, 4"H X 6"W X 16"L, Constructed Of Cast Aluminum
69811	Clean Getaway Hands-Free Door Opener, Forearm Unit, 1-3/4"W x 3"D x 2-5/8"H
69813	Clean Getaway Hands-Free Door Opener, Foot Unit, 3"W X 3-3/16"D X 3"H
55250A	Green Onion Slicer Plus, 3/16" Slices, Wall Mount Design, Blades Replaceable
55450-2	Easy Frykutter, 3/8" Cut
55500-2	Easy Chopper, 3/8 Interchangeable Cutting Grid, Aluminum Handle & Base
55550-6	Easy Wedger, Wedges Many Fruits And Vegetables, 6 Section
55550-8	Easy Wedger, Wedges Many Fruits And Vegetables, 8 Section
55550-8C	Easy Apple Corer, 8 Section, Stainless Steel Blades, Cores And Wedges
55600-1	Easy Tomato Slicer, Manual, 7-1/4"W X 15-1/4"D X 8-1/4"H, 3/16" Slice
55600-2	Easy Tomato Slicer, 1/4" Slice, Razor-Sharp S/S Blades, Self-Lubricating Track
55600-3	Easy Tomato Slicer, Manual, 7-1/4"W X 15-1/4"D X 8-1/4"H, 3/8" Slice
55650-1	Easy LettuceKutter, 1/2" Slices, Scalloped Blades, Interlocked Blades
55874-2	Easy Scooper Tomato Stem Remover, 2 Per Pack, NSF
56500-1	Easy Chopper II, Chops Many Vegetables, 4-1/4" Cutting Area, 1/4" Sq. Cut
56500-2	Cutter, Dicer, Easy Chopper II, 3/8" Blade, Stainless Steel
6000A-2	Heat Lamp, Freestanding, Infared, Two Bulb, 120/60/1, 500 Watts
6000A-2B	Heat Lamp, Freestanding, Infared, Two Bulb, 120/60/1, 500 Watts, Black
6055A	Food Warmer, 12" X 20, Rectangular, Adjustable Thermostat, 1200 Watts
6055A-43	Food warmer, (4) 1/3 Pan Configuration, Adjustable Thermostat, 1500 Watts
6101A	Warmer, Counter-Top, Round, 11 Qt., 120v/60/1ph.
6102A	Countertop Round Cooker/Warmer, 7 Qt., Stainless Steel Construction
6150-24-CP	Bar Heater, 24" X 6-3/4" X 2-3/4", Infrared Heating Element, 120v/60/1-Ph
6150-36	Strip Heater, 36" X 6" X 2.5", Infrared Heating Element, Toggle Switch
6150-36-CP	Bar Heater, 36-1/4" X 6-3/4" X 2-3/4", Calrod Heating Element, Toggle Switch
6150-48	Strip Heater, 48-14" X 6-3/4" X 2-1/2", Infrared Element, Toggle Switch, 120 Volt.
6150-48-CP	Bar Heater, 48" X 6-3/4" X 2-3/4", Infrared Heating Element, Toggle Switch
6150-60-CP	Bar Heater, 60" X 6-3/4" X 2-3/4", Infrared Heating Element, Toggle Switch
6151-48-D-208	Bar Heater, Dual, Infinite Temperature Control, 48" X 13-1/2" X 2-3/4"
6310-2	Hotplate, Horizontal Double Burner, 24-1/8" W, Brushed Stainless Steel
6750-240	Pasta Cooker/Boiling Unit, Single Tank 2.5 Gal. 240v/1ph 6000w
77316-10A	Ice Cream Spade Dipper Well, 10", 3/8" Dia. Spigot Installed For Left/Right
77316-13A	Ice Cream Spade Dipper Well, 13", 3/8" Dia. Spigot Installed For Left/Right
8027SX	Roll-A-Grill Hot Dog Grill, Roller-Type, 10 Gripsit Coated Rollers, 27 Capacity



69811



69813



6750-240

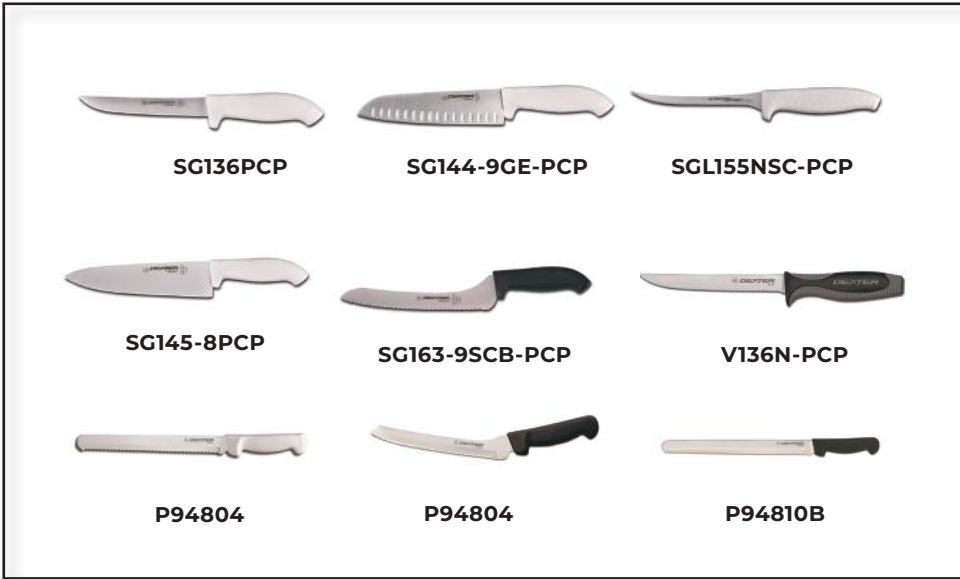
DEXTER



P177A-5PCP



P94801B



SG136PCP

SG144-9GE-PCP

SGL155NSC-PCP

SG145-8PCP

SG163-9SCB-PCP

V136N-PCP

P94804

P94804

P94810B



SGS01B-CP



S13210-PCP



P94847



SG145-12PCP

ITEM NO.	DESCRIPTION
EP156HGB	Sani-Safe Boning Knife, 6" Hollow Ground, Stain-Free, High-Carbon Steel
P177A-5PCP	Sani-Safe Pizza Cutter, 5", Stain-Free, High-Carbon Steel
P177A-PCP	Sani-Safe Pizza Cutter, 4", Stain-Free, High-Carbon Steel
P94801B	Basics Chef's/Cook's Knife, 8", Stain-Free, High-Carbon Steel
P94802B	Basics Chef's/Cook's Knife, 10", Stain-Free, High-Carbon Steel
P94804	Basics Slicer/ Bread Knife, 10", Scalloped Edge, High-Carbon Steel
P94804B	Basics Slicer/Bread Knife, 10", Scalloped Edge, High-Carbon Steel
P94807B	Basics Bread Knife, 8" Stain-Free Scalloped Offset Blade
P94810B	Basics Roast Slicer, 12", Stain-Free, High-Carbon Steel
P94816	Basics Russell International 3" Clip Point Paring Knife High-Carbon Steel
P94821B	Basics Boning Knife, 6", Wide, Stain-Free, High-Carbon Steel
P94821B	Basics Boning Knife, 6", Narrow, Stiff, Stain-Free, High-Carbon Steel
P94831	Basics Chef's/Cook's Knife, 10", With Wide Choil, High-Carbon Steel
P94843B	Basics Paring Knife, 3-1/8", Tapered Point, Stain-Free, High-Carbon Steel
P94847	Basics Utility Knife, 6", Scalloped Edge, Stain-Free, High-Carbon Steel
S104PCP	Sani-Safe Cook's Style Paring Knife, 3-1/4", Stain-Free, High-Carbon Steel
S107PCP	Sani-Safe Paring Knife, 3-1/4" Clip Point, Stain-Free, High-Carbon Steel
S119PCP	Sani-Safe Clam Knife, 3", Wide, Stain-Free, High-Carbon Steel
S121PCP	Sani-Safe Oyster Knife, 2-3/4", New Haven Pattern, High-Carbon Steel
S132-10PCP	Sani-Safe Cimenter Steak Knife, 10", Stain-Free, High-Carbon Steel
S133-9PCP	Sani-Safe Fillet Knife, 9", Stain-Free, High-Carbon Steel
S134PCP	Sani-Safe 3" Oyster Knife In Boston Pattern In Pc-Pak High-Carbon Steel
S140-12SC-PCP	Sani-Safe 12" Scalloped Edge Roast Slicer In Pc-Pak, High-Carbon Steel
S145-10PCP	Sani-Safe Chef's/Cook's Knife, 10", Stain-Free, High-Carbon Steel
S145-12PCP	Knife Cook's Sani-Safe 12" In Pc-Pak. Stain-Free, High-Carbon Steel
SG136PCP	SofGrip Boning Knife, 6", Wide, Dexsteel Stain-Free, High-Carbon Steel
SG140-12PCP	SofGrip Roast Slicer, 12", Stain-Free, High-Carbon Steel
SG144-9GE-PCP	SofGrip Santoku Knife, 9", Duo-Edge, Stain-Free, High-Carbon Steel
SG145-8PCP	SofGrip Chef's/Cook's Knife, 8", Stain-Free, High-Carbon Steel
SG163-9SCB-PCP	SofGrip Sandwich Knife, 9", Offset, Scalloped Edge, High-Carbon Steel
SG163-9SC-PCP	SofGrip Sandwich Knife, 9", Offset, Scalloped Edge, High-Carbon Steel
SG173PCP	SofGrip Sandwich Spreader, 3-1/2", Stain-Free, High-Carbon Steel
SGL155NSC-PCP	SofGrip 5-1/2" Scalloped Utility Slicer In Pc-Pak. High-Carbon Steel
SGS01B-CP	SofGrip Poultry/Kitchen Shears, Stain-Free, High-Carbon Steel
V136N-PCP	V-Lo Boning Knife, 6", Narrow, Dexsteel Stain-Free, High-Carbon Steel



AR23/AF23



AR49/AF49



AWR25 /AWF25



ARGDM23/
AFGDM23



ARGDM49/
AFGDM49



AST28R



AST48R



AST60R



AST72R



AMT28R



AMT48R



AMT60R



AMT72R



APP48R



APP71R



APP94R



AUC27R/
AUC27F



AUC48R/
AUC48F



AUC60R/
AUC60F



▲ ABB48/
ABB48GV



▲ ABB60/
ABB60GV



▲ ABB72/
ABB72GV



AUB36R



AUB50R



AUB65R



ARCB36



ARCB48



ARCB60



ARCB72

ITEM NO. DESCRIPTION

REACH INS

AR23	Single Door Reach-In Refrigerator - Stainless Steel
AR49	2 Door Reach-In Refrigerator - Stainless Steel
AF23	Single Door Reach-In Freezer - Stainless Steel
AF49	2 Door Reach-In Freezer - Stainless Steel
AWR25	Single Door Reach-In Refrigerator - White
AWF25	Single Door Reach-In Freezer - White

GLASS DOOR MERCHANDISERS

ARGDM23	Single Door Glass Reach-In Merchandiser Refrigerator
ARGDM49	2 Door Glass Reach-In Merchandiser Refrigerator
AFGDM23	Single Door Glass Reach-In Merchandiser Freezer
AFGDM49	2 Door Glass Reach-In Merchandiser Freezer

REFRIGERATED PREP TABLES

AST28R	Single Door Sandwich/Salad Prep Table - 28"
AST48R	2 Door Sandwich/Salad Prep Table - 48"
AST60R	2 Door Sandwich/Salad Prep Table - 60"
AST72R	3 Door Sandwich/Salad Prep Table - 72"
AMT28R	Mega-Top Single Door Sandwich/Salad Prep Table - 28"
AMT48R	Mega-Top 2 Door Sandwich/Salad Prep Table - 48"
AMT60R	Mega-Top 2 Door Sandwich/Salad Prep Table - 60"
AMT72R	Mega-Top 3 Door Sandwich/Salad Prep Table - 72"

PIZZA PREP TABLES

APP48R	Single Door Pizza Prep Table - 48"
APP71R	2 Door Pizza Prep Table - 71"
APP94R	3 Door Pizza Prep Table - 94"

UNDERCOUNTER

AUC27R	Single Door Under-Counter Refrigerator
AUC48R	2 Door Under-Counter Refrigerator
AUC60R	2 Door Under-Counter Refrigerator
AUC27F	Single Door Under-Counter Freezer
AUC48F	2 Door Under-Counter Freezer
AUC60F	2 Door Under-Counter Freezer

BAR REFRIGERATION

ABB48	2 Door Solid Back Bar Refrigerator - 48"
ABB48G	2 Glass Door Back Bar Refrigerator - 48"
ABB60	2 Door Solid Back Bar Refrigerator - 60"
ABB60G	2 Glass Door Back Bar Refrigerator - 60"
ABB72	3 Door Solid Back Bar Refrigerator - 72"
ABB72G	3 Glass Door Back Bar Refrigerator - 72"
AUB36R	Single Lid Horizontal Bottle Cooler - 36"
AUB50R	2 Lid Horizontal Bottle Cooler - 50"
AUB65R	2 Lid Horizontal Bottle Cooler - 65"

REFRIGERATED CHEF BASES

ARCB36	2 Drawer Refrigerated Chef Base - 36"
ARCB48	2 Drawer Refrigerated Chef Base - 48"
ARCB60	2 Drawer Refrigerated Chef Base - 60"
ARCB72	4 Drawer Refrigerated Chef Base - 72"



EMBASSY



3705



3711



3728

PERCEPTION



3011



3730



3733



3795



3055

3057

GIBRALTER



15240



15241



15242



15243



15244

EVEREST



15436



15248



15456



5262

ENDEAVOR



15710



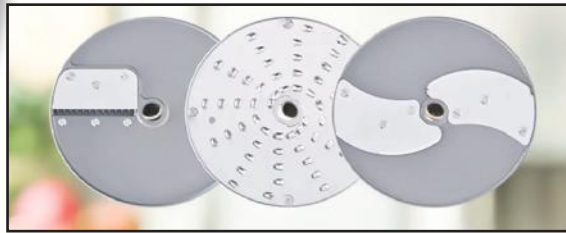
15712



15733

ITEM NO.	DESCRIPTION	PRICE	UOM
EMBASSY GLASSWARE			
3705	Brandy Glass, 11½ oz. (24 per Case)		
3711	Goblet Glass, 11½ oz. (24 per Case)		
3728	Beer Glass, 12 oz. (24 per Case)		
3730	Beer Glass, 14 oz. (24 per Case)		
3733	Martini Glass, 7½ oz. (12 per Case)		
3795	Flute Glass, 6 oz. (12 per Case)		
PERCEPTION GLASSWARE			
3011	Wine Goblet, 14 oz. (24 per Case)		
3055	Cocktail Glass, 8½ oz. (12 per Case)		
3057	Wine Glass, 11 oz. (24 per Case)		
GIBRALTAR GLASSWARE			
15240	Rocks Glass, 8 oz. (36 per Case)		
15241	Rocks Glass, 7 oz. (36 per Case)		
15242	Rocks Glass, 9 oz. (36 per Case)		
15243	Double Rocks Glass, 12 oz. (36 per Case)		
15244	Beverage Glass, 14 oz. (36 per Case)		
15248	Rocks Glass, 4½ oz. (36 per Case)		
15256	Cooler Glass, 16 oz. (24 per Case)		
5262	Super Mug, 34 oz. (12 per Case)		
ENDEAVOR GLASSWARE			
15710	Rocks Glass, 9 oz. (12 per Case)		
15712	Double Old Fashioned Glass, 12 oz. (12 per Case)		
15733	Espresso Glass, 3¾ oz. (12 per Case)		
EVEREST GLASSWARE			
15436	Beverage Glass, 12 oz. (36 per Case)		

robot coupe®



27051



27055



R2NCLR



R2B



R2U



R2DICE



27086



CMP250VV



MP450

ITEM NO.	DESCRIPTION
27051	Slicing Plate, 1mm, (1/32"), Fits R100, R2, R300, R301u, R302 And CI30 Series
27055	"S" Blade For R2n
27080	Julienne Disk, 2 X 4 Mm, (5/64" X 5/32") Fits R100, R2, R301, R402v, CI30a.
27086	Slicing Plate, 1/8"
27242	Continuous Feed Kit for R2N
27566	Slicing Plate, 4mm, fits R100, R2 series, R300 series, R301U series, R302 series
27577	Grating Plate, Medium, Fits R100, R2 series, R300 series, R301U series, R302
27588	Grating Disc, Fine (1/16")
27621	Slicing Disc, Waved, 2mm
29007	White Vegetable Slicer Bowl Safety Rod Assembly
39380	Plastic Dome Lid For R301
102699S	Bottom For Continuous Feed Attachement For #R2N
103288S	Parts: Discharge White Plate For R2N
117395S	Parts, Couvercle Cutter (Cutter Lid) for R301/ R401
28196W	Slicing Disc, 6mm (1/4")
CMP250VV	Compact Power Mixer, Hand Held, 15 Liter Processing Capacity, 10" SS Shaft
MP450	Commercial Power Mixer, 18" SS Shaft, Removable SS Foot & Knife
MP450 TURBO VV	Commercial Power Mixer, 18" S/S Shaft, Removable S/S Foot & Knife
R2 DICE	Commercial Food Processor, 3 Qt., Gray ABS Plastic Bowl W/Handle
R2B	Food Processor, With Bowl Attachment Kit Only, 2 1/2 Qt. Capacity
R2N	Commercial Food Processor, 3 Liter Gray Polycarbonate Bowl With Handle
R2NCLR	Commercial Food Processor, 3 Liter Clear Polycarbonate Bowl With Handle
R2U	Commercial Food Processor, 3 Liter Stainless Steel Bowl With Handle