

InertSearch™ for LC

Inertsil™ Applications

Analysis of Steviol glycosides

(Under the Condition of the JPE (Japanese Pharmaceutical Excipients),
Purified Stevia Extract Assay)

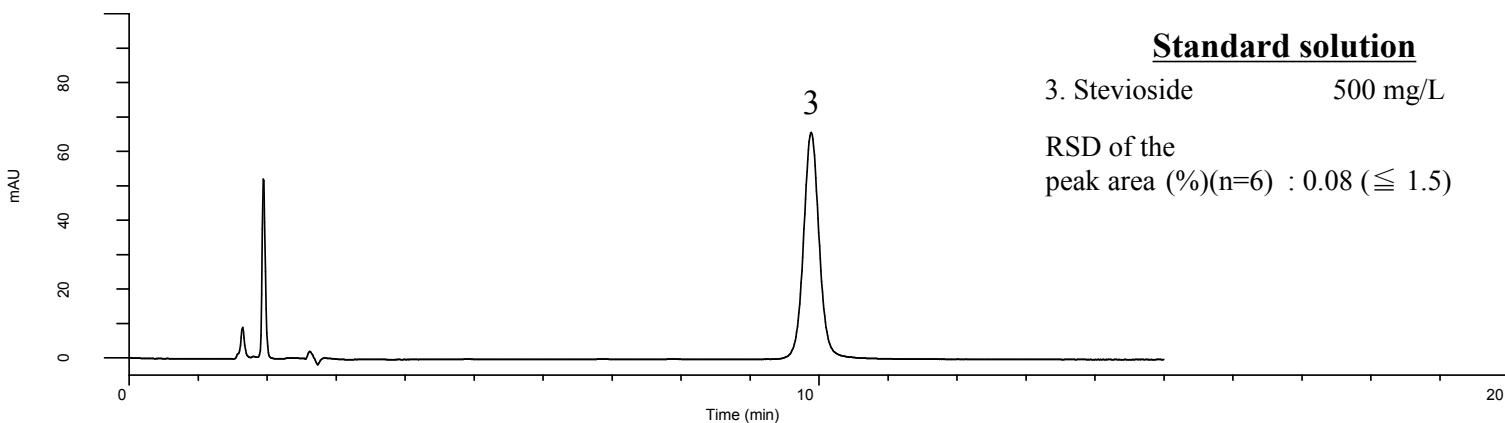
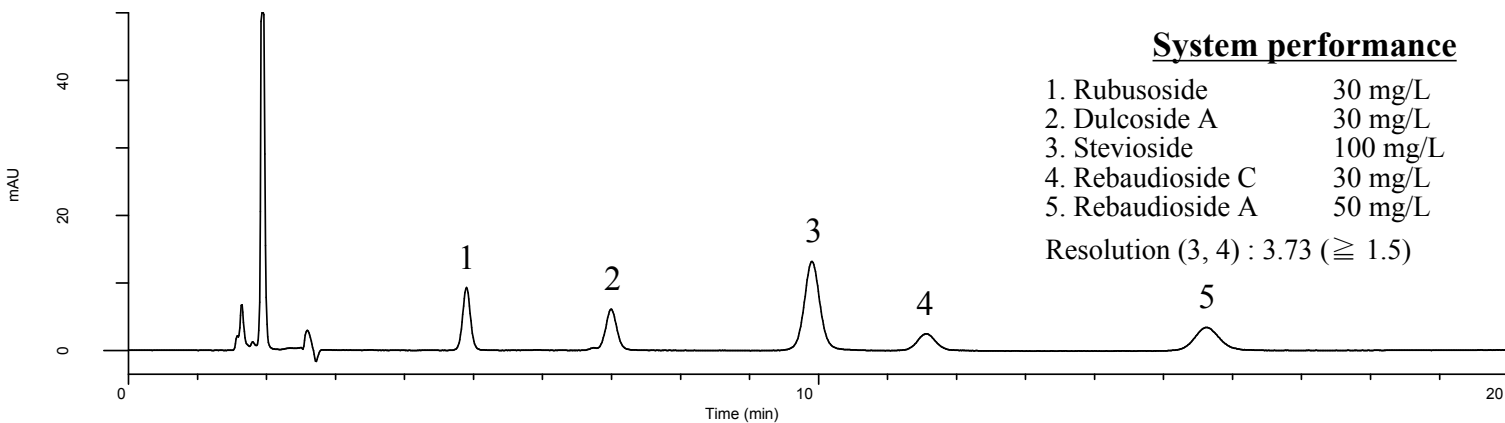
Data No. LB564-0919

System performance

1. Rubusoside	30 mg/L
2. Dulcoside A	30 mg/L
3. Stevioside	100 mg/L
4. Rebaudioside C	30 mg/L
5. Rebaudioside A	50 mg/L
Resolution (3, 4) : 3.73 (≥ 1.5)	

Standard solution

3. Stevioside	500 mg/L
RSD of the peak area (%) (n=6) : 0.08 (≤ 1.5)	



Conditions

System	: GL7700 HPLC system
Column	: Inertsil NH2 (5 μ m, 250 x 4.6 mm I.D.)
Column Cat. No.	: 5020-05546
Eluent	: A) CH ₃ CN B) H ₂ O A/B = 4/1, v/v
Flow Rate	: 1.4 mL/min
Col. Temp.	: 35 °C
Detection	: UV 213 nm (PD7752 PDA Detector)
Injection Vol.	: 20 μ L
Sample	: Standard

Analyte:

1. Rubusoside
2. Dulcoside A
3. Stevioside
4. Rebaudioside C
5. Rebaudioside A