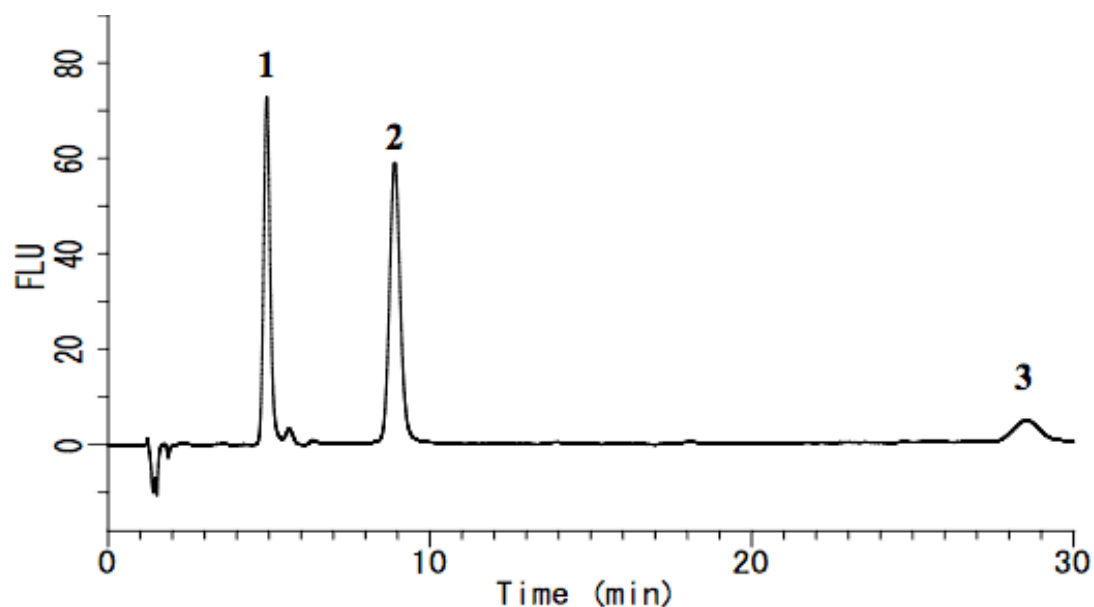


Analysis of Tetracyclines (1)

Data No. LA562-0696



System	: GL-7400 system	Solutes	: 1. Oxytetracycline (1 mg/L)
Column	: Inertsil ODS-3 (5 μ m, 150 x 4.6 mm I.D.)		2. Tetracycline (1 mg/L)
Column Cat. No. :			3. Chlortetracycline (1 mg/L)
Eluent	: A) CH ₃ OH B) 1.0 M Imidazol, 50 mM CH ₃ COOMg, 1 mM EDTA (pH 7.2; CH ₃ COOH) A/B = 15/85 ,v/v		
Flow rate	: 1.2 mL/min		
Col. Temp.	: 40 °C		
Detection	: FL Ex 380 nm Em 520 nm (GL-7453A FL Detector)		
Injection Vol.	: 20 μ L		
Sample	:		