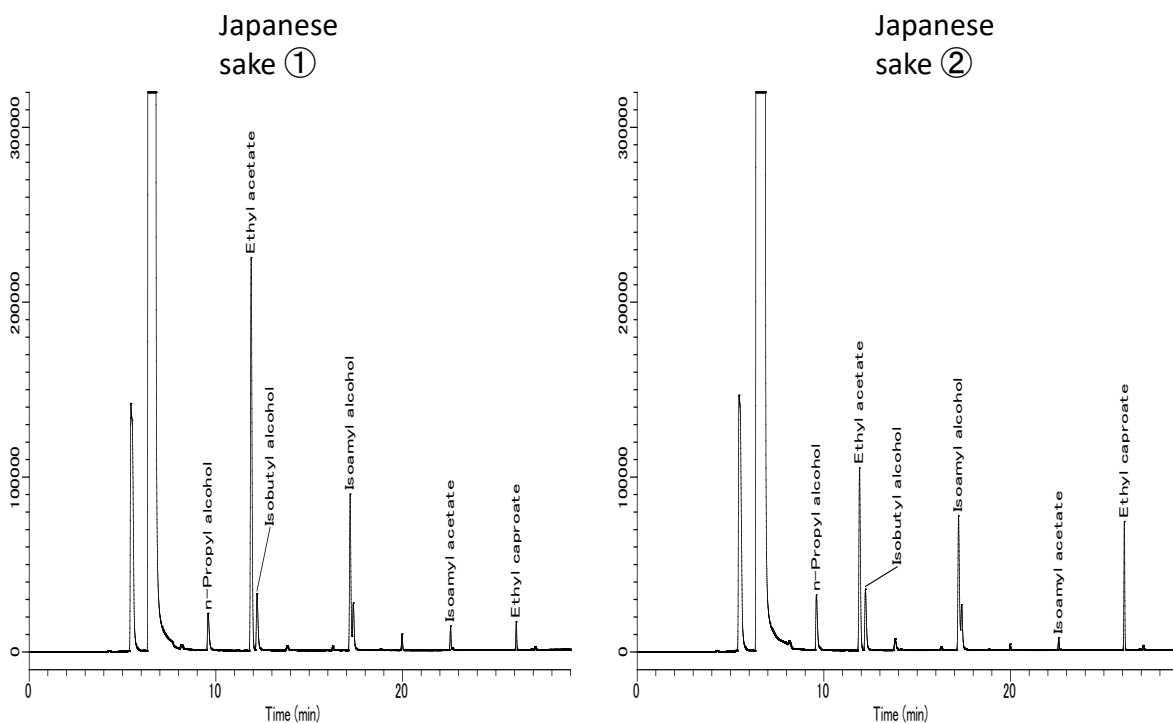


# Analysis of Flavor Components in Japanese Sake - Using a Headspace Autosampler

n-Propyl alcohol, Ethyl acetate, Isobutyl alcohol, Isoamyl alcohol, Isoamyl acetate, and Ethyl caproate are all known as flavor constituents in Japanese sake and are particularly abundant among several flavor constituents. In this application two types of Japanese sake were analyzed with a headspace autosampler using a standard addition method to determine the components detailed above.

## Example: Measurement of sample



### Conditions

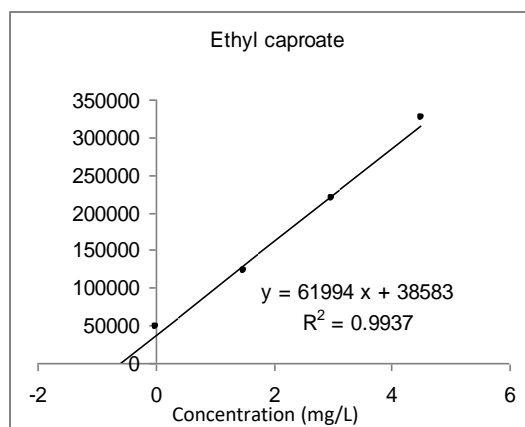
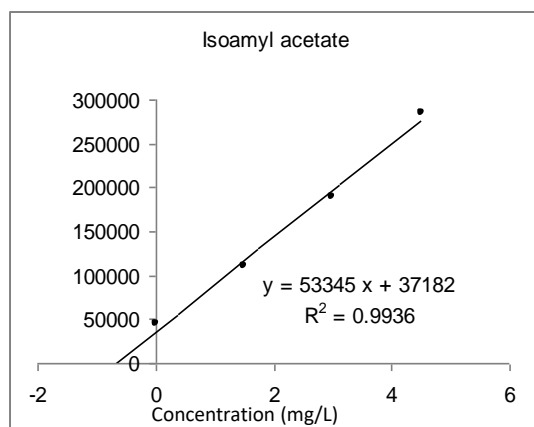
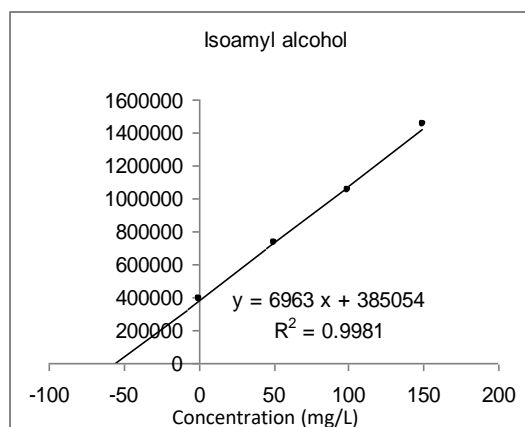
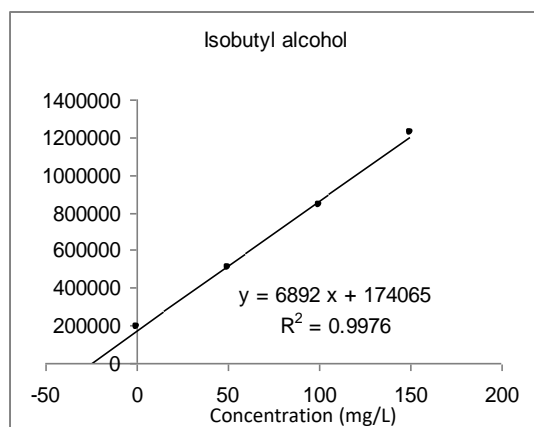
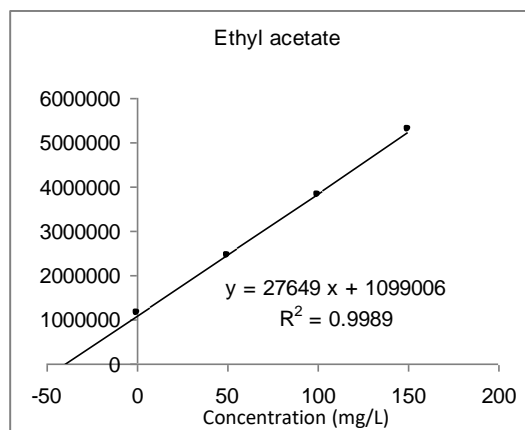
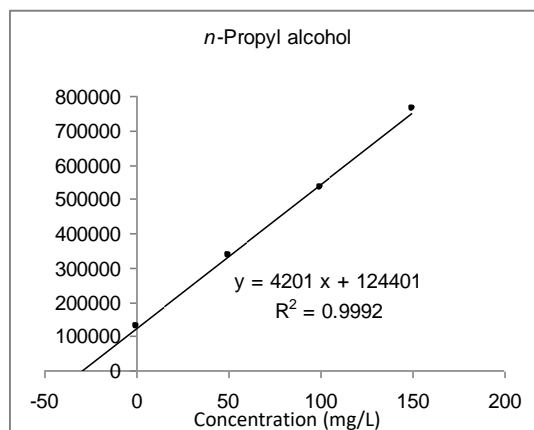
<b>System</b>	: GC - FID - HS (Tekmar HT3)
<b>Column</b>	: AQUATIC 0.32 mm I.D. x 60 m df = 1.40 $\mu$ m
<b>Col.Temp.</b>	: 40 °C (5 min) - 5 °C/min - 100 °C - 10 °C/min - 200 °C (13 min)
<b>Carrier Gas</b>	: He 100 kPa
<b>Detection</b>	: FID Range 10 <sup>10</sup> 220 °C

### HS Conditions

<b>Sample.Temp.</b>	: 50 °C
<b>Sample Equil. Time</b>	: 15 min
<b>Mixing Time</b>	: 10 min
<b>Mixing Stabilize Time</b>	: 5 min
<b>Loop Size</b>	: 0.5 mL
<b>Injection</b>	: Direct

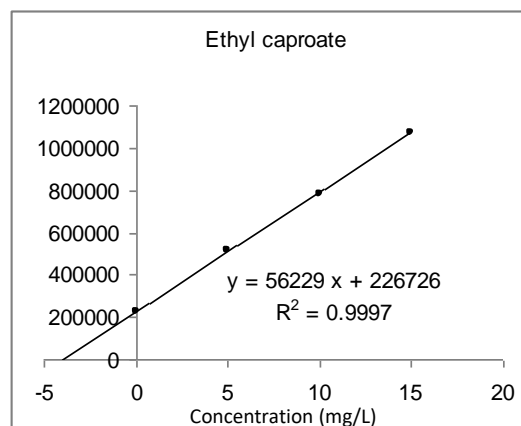
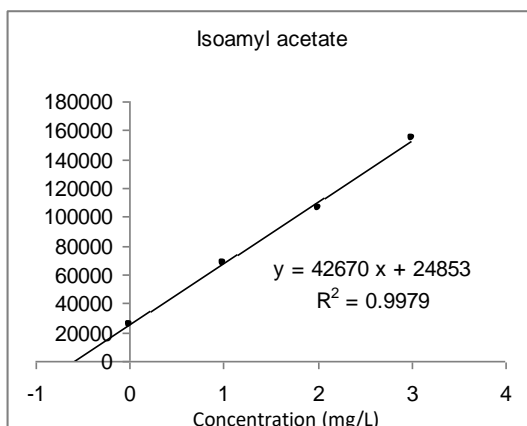
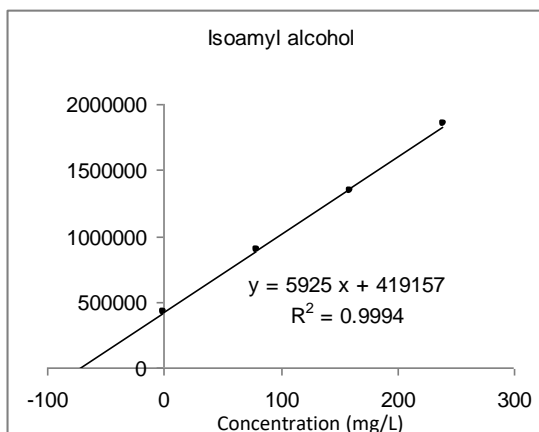
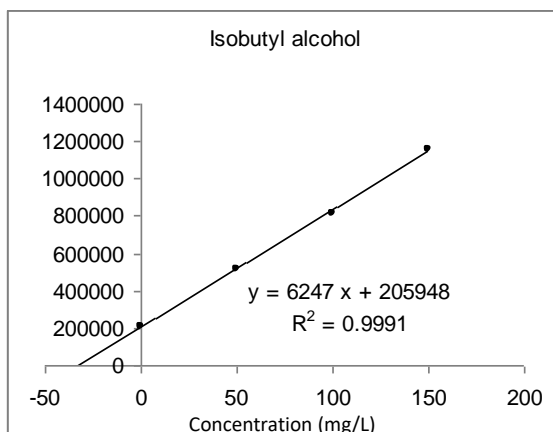
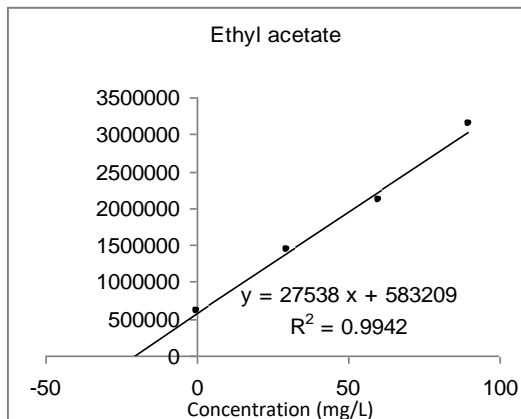
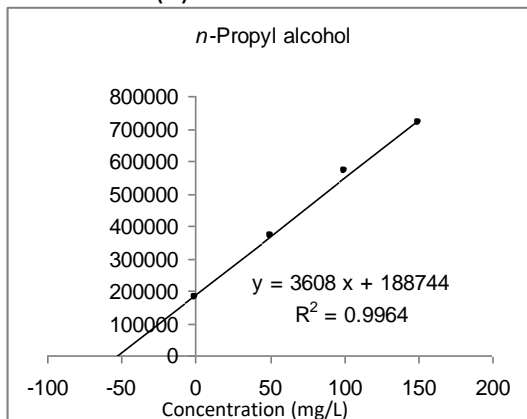
## Calibration curves

### Japanese sake (1) standard addition method



## Calibration curves

### Japanese sake (2) standard addition method



GL Sciences disclaims any and all responsibility for any injury or damage which may be caused by this data directly or indirectly. We reserve the right to amend this information or data at any time and without any prior announcement.

#### GL Sciences, Inc. Japan

22-1 Nishishinjuku 6-Chome  
Shinjuku-ku, Tokyo,  
163-1130, Japan  
Phone: +81-3-5323-6620  
Fax: +81-3-5323-6621  
Email: [world@glsc.co.jp](mailto:world@glsc.co.jp)  
Web: [www.glsciences.com](http://www.glsciences.com)

#### GL Sciences B.V.

De Sleutel 9  
5652 AS Eindhoven  
The Netherlands  
Phone: +31 (0)40 254 95 31  
Email: [info@glsciences.eu](mailto:info@glsciences.eu)  
Web: [www.glsciences.eu](http://www.glsciences.eu)

#### GL Sciences, Inc. USA

4733 Torrance Blvd. Suite 255  
Torrance, CA 90503  
Phone: 310-265-4424  
Fax: 310-265-4425  
Email: [info@glsciencesinc.com](mailto:info@glsciencesinc.com)  
Web: [www.glsciencesinc.com](http://www.glsciencesinc.com)

#### GL Sciences (ShangHai) Ltd.

Tower B, Room 2003,  
Far East International Plaza,  
NO,317 Xianxia Road,  
Changning District.  
Shanghai, China P.C. 200032  
Phone: +86 (0)21-6278-2272  
Email: [contact@glsciences.com.cn](mailto:contact@glsciences.com.cn)  
Web: [www.glsciences.com.cn](http://www.glsciences.com.cn)

#### International Distributors

Visit our Website at [www.glsciences.com/distributors](http://www.glsciences.com/distributors)