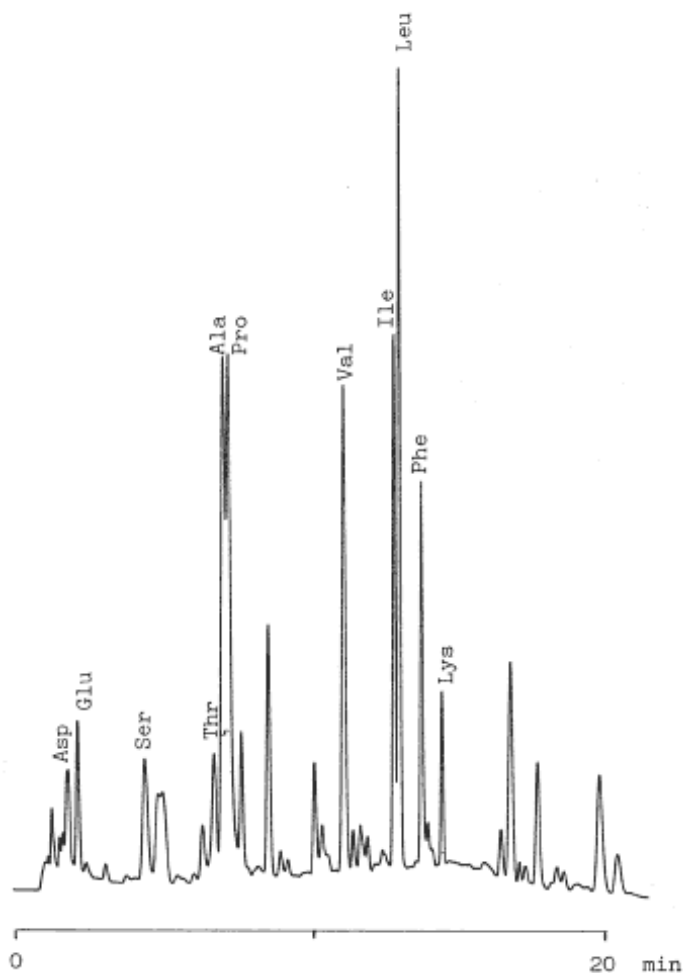


## PTC-Amino acids in Soy-sauce

Data No. LA005-0000



Column :Inertsil C8  
5 $\mu$ m  
10  $\times$  4.0 mm I.D. (Guard) + 100  $\times$  4.6 mm I.D.  
Column Cat. No. :5020-01201  
Eluent :A: CH<sub>3</sub>CN/0.1 M CH<sub>3</sub>COONH<sub>4</sub> = 5/95  
B: CH<sub>3</sub>CN/0.1 M CH<sub>3</sub>COONH<sub>4</sub> = 45/55  
A/B = 100/0 - 7 min - 75/25 - 7 min - 0/100  
Flow rate :1.0 mL/min.  
Col. Temp. :40 °C  
Detection :UV 254 nm  
Injection Vol. :  
Sample :PTC-amino acids

Solutes :1. Asparatic acid (Asp)  
2. Glutamic acid (Glu)  
3. Serine (Ser)  
4. Threonine (Thr)  
5. Alanine (Ala)  
6. Proline (Pro)  
7. Valine (Val)  
8. Isoleucine (Ile)  
9. Leucine (Leu)  
10. Phenylalanine (Phe)  
11. Lysine (Lys)