

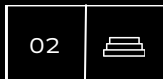
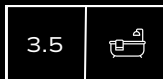


THERESA MCNEIL GROVE

HALIFAX NS

101THERESAMCNEILGROVE.THEBESTLISTING.COM

P: 902 446.3113 E: HRMOffice@assist2sell.com





MODERN LUXURY

2924 SQFT OF GORGEOUS
HOME IN ROCKINGHAM

Luxury Has a New Address.

Welcome to 101 Theresa McNeil Grove—an architectural masterpiece built in 2021 that defines the art of fine living. Every element of this stunning four-bedroom, 3.5-bath home reflects thoughtful design and luxurious attention to detail. Whether you're a family, a professional couple, or seeking one-level living, this home adapts seamlessly to your lifestyle.

From the moment you enter, you'll be captivated by soaring 10-foot ceilings and an open-concept layout that flows effortlessly with windows highlighted by power-controlled Hunter Douglas Blinds. The designer kitchen is a showstopper—complete with quartz countertops, waterfall quartz kitchen island, floor-to-ceiling cabinetry, a Bertazzoni dual-fuel range (gas cooktop/electric oven), Thermador panelled fridge, Thermador microwave drawer, Thermador Dishwasher and hidden ladders to access upper cabinets with ease. Natural gas heating and cooking, in-floor heating in the ensuite, and a commercial-grade Maytag laundry setup bring a level of performance and comfort rarely found in residential homes.



2924 SQFT OF GORGEOUS
HOME IN ROCKINGHAM



Located in the sought-after community of Rockingham South, this home is truly a must-see. The craftsmanship, upgrades, and elegance throughout make it a rare offering in the Halifax market.



THE GREAT ROOM

Soaring 10-foot ceilings and an open-concept layout that flows effortlessly with windows highlighted by power-controlled Hunter Douglas Blinds.





Bedrooms

THE MAIN LEVEL FEATURES TWO SPACIOUS BEDROOMS, EACH WITH ITS OWN FULL EN-SUITE, ALONG WITH A STYLISH HALF-BATH FOR GUESTS.

The Primary Bedroom

THE PRIMARY SUITE INCLUDES A GENEROUS WALK-IN CLOSET AND A SPA-LIKE ENSUITE BATHROOM WITH HEATED FLOORS.



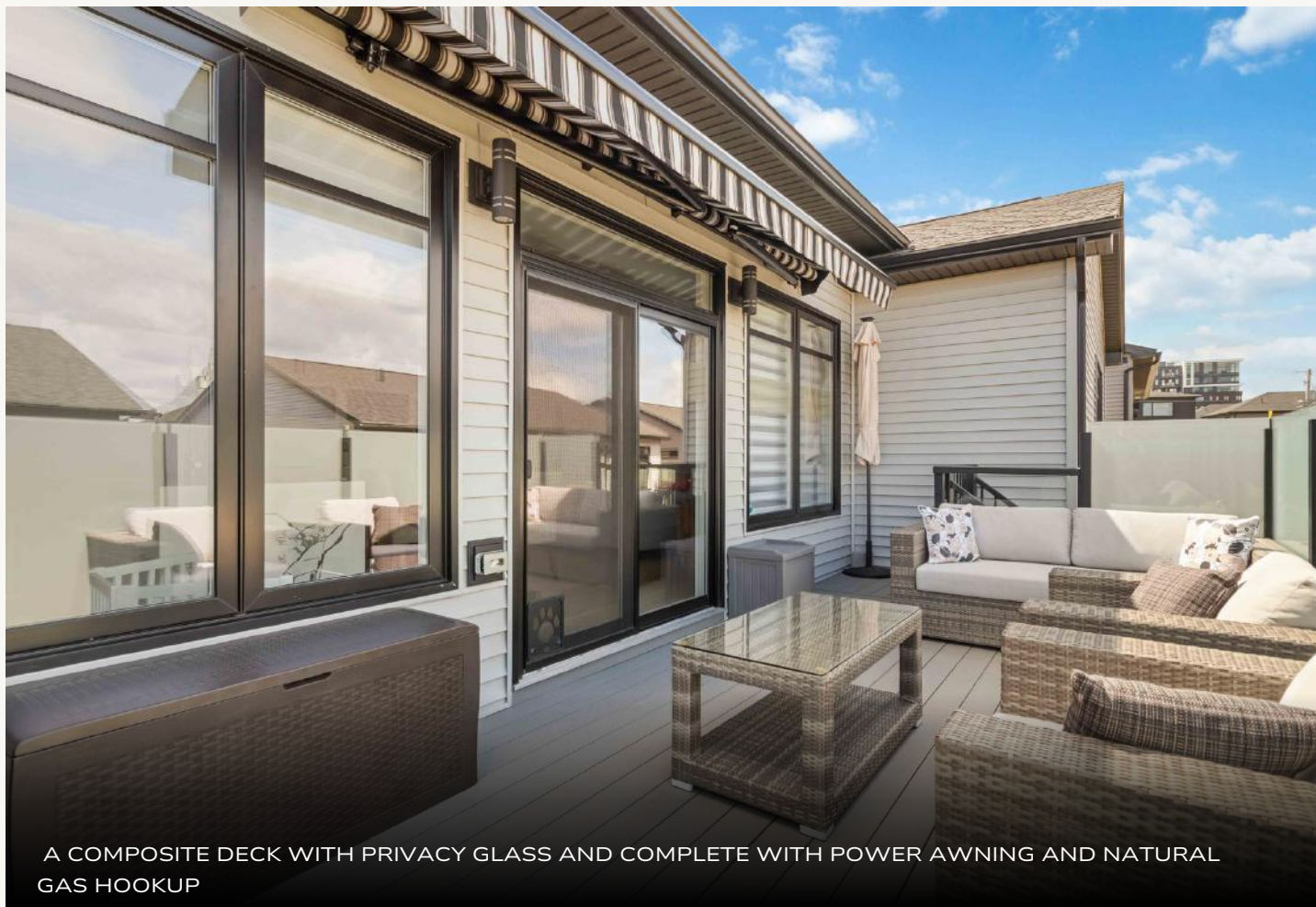


THE KITCHEN

The designer kitchen is a showstopper—complete with quartz countertops, waterfall quartz kitchen island, floor-to-ceiling cabinetry, a Bertazzoni dual-fuel range (gas cooktop with electric oven), Thermador panelled fridge, Thermador microwave drawer, Thermador Dishwasher and hidden ladders to access upper cabinets with ease







A COMPOSITE DECK WITH PRIVACY GLASS AND COMPLETE WITH POWER AWNING AND NATURAL GAS HOOKUP



THE YARD

Private fenced yard, and an in-ground irrigation system. The property comes with an on-demand natural gas generator for year-round peace of mind.



9-foot ceilings, two additional bedrooms, one full bathroom, and a rec room complete with a wet bar and pre-wired speakers

THE LOWER
LEVEL

SPACES FOR EVERYONE

- The lower level is equally impressive with 9-foot ceilings
- Ample Utility and Storage Areas





WET BAR



GAMES ROOM



FAMILY ROOM

FEATURES

THE LOWER LEVEL

- 9 Foot Ceilings
- Heat Pump
- Family Room
- Games Room
- 2 Bedrooms
- Utility Room
- Storage

THE DECK

- Composite Decking
- Natural Gas HookUp
- Power Awning

THE GREAT ROOM

- 10 Foot Ceilings
- Electric Hunter
- Douglas Blinds
- Stunning Floor to
- Ceiling Fireplace
- Feature wall
- Walk out to Deck
- Open to Chef's
- Kitchen

THE YARD

- Fenced Yard
- Privacy Screens
- Irrigation Systems
- Whole Home On demand Power Generator

THE KITCHEN

- Quartz Countertops
- Waterfall Quartz Kitchen Island
- Bertazzoni dual-fuel range - gas cooktop with electric oven
- Thermador Microwave Drawer, Refrigerator, Dishwasher

THE LAUNDRY

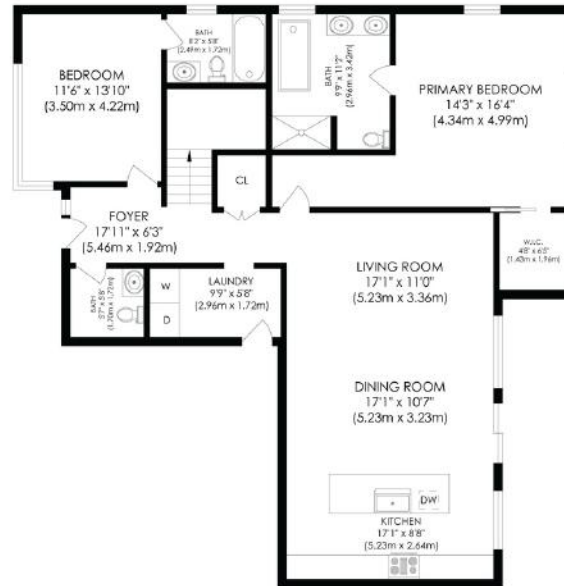
- Main Floor
- Commercial Grade
- Gas Powered Dryer



IT IS IN THE DETAILS...



THE UPPER LEVEL



MAIN LEVEL

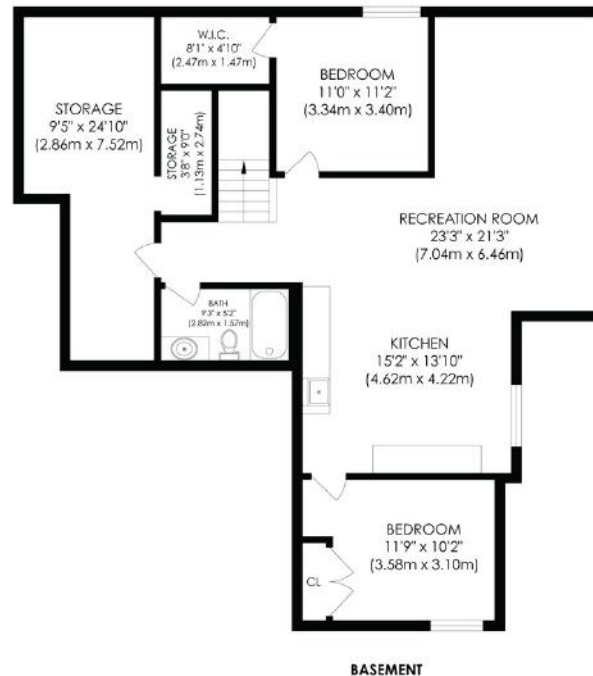


FLOOR PLAN AREA 1,476 sq.ft.

APPROXIMATE SQUARE FOOTAGE
ALL DRAWINGS ARE FOR ILLUSTRATIVE PURPOSES ONLY

101 THERESA MCNEIL GROVE, HALIFAX, NS B3M 4R2, CANADA

THE LOWER LEVEL



0 5

FLOOR PLAN AREA 1,242 sq.ft.

APPROXIMATE SQUARE FOOTAGE
ALL DRAWINGS ARE FOR ILLUSTRATIVE PURPOSES ONLY



THE AREA

Located in Rockingham in Clayton Park, this property is located close to all levels of schools - both English and French. Walking distance to Tremont Park, Playgrounds, Tennis and Basketball Courts

Walking distance to Bus transit, just minutes to Mount St. Vincent University, Bayers Lake Shopping District and just a short commute to downtown Halifax

HIGHLIGHTS



**TREMONT
PARK**



**MOUNT ST.
VINCENT
UNIVERSITY**



BAYERS LAKE

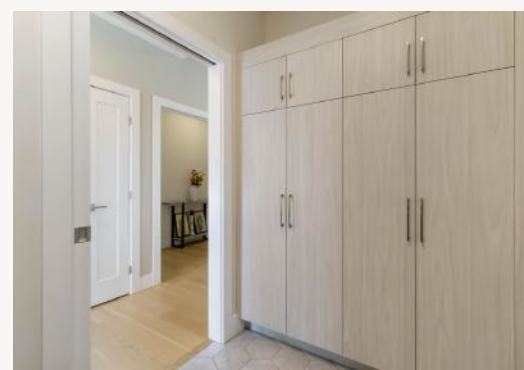


**MINUTES TO
DOWNTOWN
HALIFAX**

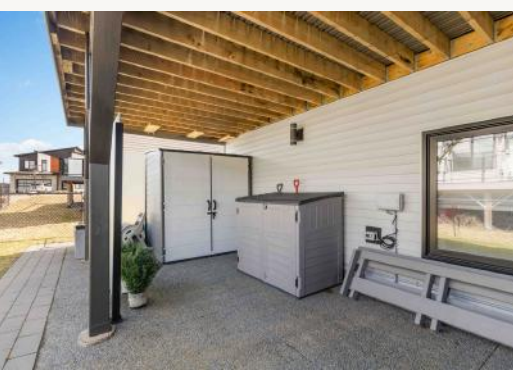
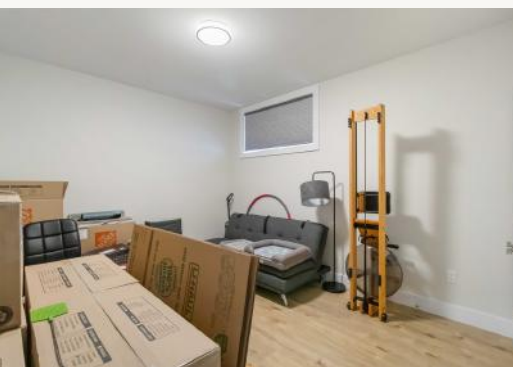
















Assist2Sell.
HomeWorks Realty

Michael C. Doyle

REALTOR | 902 446-3113 | HRMOffice@Assist2Sell.com | AsLowAs2995.com