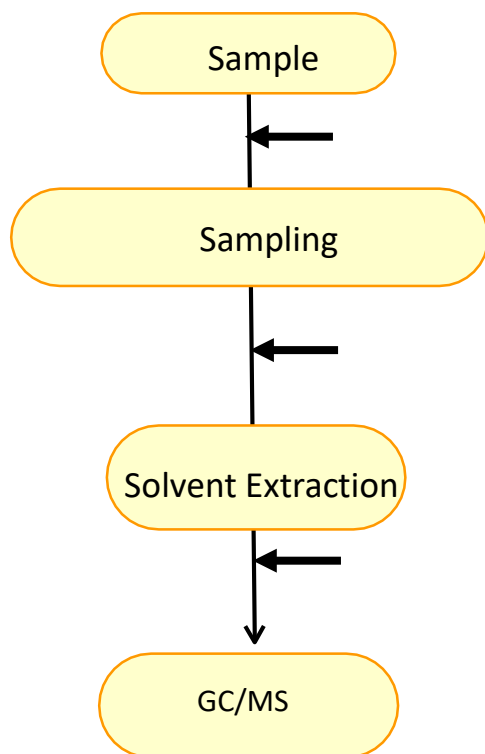


Comparison of Mushroom Fragrance with MonoTrap

MonoTrap is a hybrid novel adsorbent that combines a large surface area and the properties of silica gel, activated carbon, and ODS. Utilizing the surface of porous silica, it can be used as a tool that makes use of the large surface area and the adsorbent effect caused by the inclusion of activated carbon for high collection efficiency and for short time and sensitive analysis. In this study, we used MonoTrap DCC18 (with activated carbon) to perform simple enrichment analyses of two fragrance components in different production areas (conditions). It is low-cost per unit and requires no conditioning before use, so multiple samples can be easily collected. The highly inert WAX-column InertCap Pure-WAX is the optimal column for fragrance components analyses. It is recommended to use this medicine in conjunction with MonoTrap.

Column : InertCap Pure-WAX (Cat.No. 1010-68142) 0.25 mm I.D. × 30 m df=0.25 μm

Protocol



2 kinds of Mushrooms produced in
different areas 38 g/each



MonoTrap ; DCC18 5 pcs
Room temperature, 12 hours

Diethyl ether 1000 μL,
Ultrasonication 5 mins

Enrich by N₂ purge to a few μL



③MT Extract Cup with Vial

GC Condition

System : SHIMADZU GC-2010, GCMS-QP2010

Column : InertCap Pure-WAX
0.25 mm I.D. × 30 m df=0.25 μm

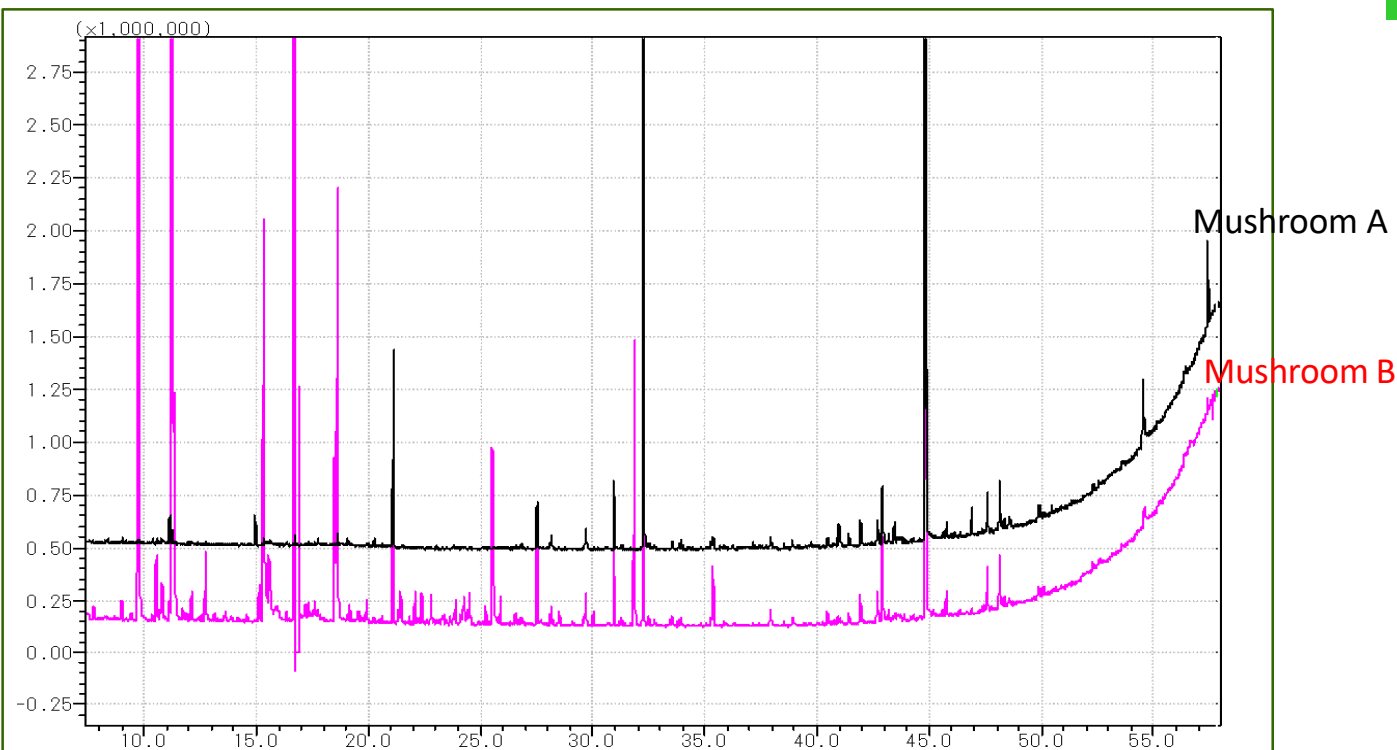
Column Temp : 40 °C (5 min) → 4 °C/min → 250 °C (5 min)

GC Capillary Column: **InertCap Pure-WAX** 0.25 mm I.D. × 30 m df=0.25 μm Cat.No.1010-68142

Carrier Gas : He 95 kPa

Injection : Split 1:10, 1 μL 250 °C
: MS Scan (*m/z*; 25-450)

Detection



< Comparison of Fragrances by Area % >

	Mushroom A	Mushroom B
1-Octen-3-ol	2.3 %	4.5 %
3-Octanol	1.7 %	33.1 %
3-Octanone	1.8 %	35.8 %
Dimethyl trisulfide	1.7 %	4.5 %

Ref) [Food] Fragrance Encyclopedia by Japan Perfumery & Flavoring Association

Fresh mushroom contained more water while the dried one had stronger fragrance. These differences can be observed by GC/MS using MonoTrap

GL Sciences disclaims any and all responsibility for any injury or damage which may be caused by this data directly or indirectly. We reserve the right to amend this information or data at any time and without any prior announcement.

GL Sciences, Inc. Japan

22-1 Nishishinjuku 6-Chome
Shinjuku-ku, Tokyo,
163-1130, Japan
Phone: +81-3-5323-6620
Fax: +81-3-5323-6621
Email: world@glsc.co.jp
Web: www.glsciences.com

GL Sciences B.V.

De Sleutel 9
5652 AS Eindhoven
The Netherlands
Phone: +31 (0)40 254 95 31
Email: info@glsciences.eu
Web: www.glsciences.eu

GL Sciences (ShangHai) Ltd.

Tower B, Room 2003,
Far East International Plaza,
NO,317 Xianxia Road,
Changning District.
Shanghai, China P.C. 200051
Phone: +86 (0)21-6278-2272
Email: contact@glsciences.com.cn
Web: www.glsciences.com.cn

GL Sciences, Inc. USA

4733 Torrance Blvd. Suite 255
Torrance, CA 90503
Phone: 310-265-4424
Fax: 310-265-4425
Email: info@glsciencesinc.com
Web: www.glsciencesinc.com

International Distributors

Visit our Website at:
<https://www.glsciences.com/company/distributor.html>

