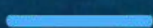


CATALOGO DE **PRODUCTOS** 2026



JD SOLUTIONS





JD SOLUTIONS

Introducción

Es un privilegio pertenecer al mercado en Puerto Rico desde 2018, como distribuidor de accesorios para la fabricación de roll-ups o tormenteras enrollables.

Nos enorgullece haber ayudado a proteger innumerables hogares y negocios durante estos años de temporadas activas de huracanes, como también, brindar seguridad ante vandalismo o robos.

Nuestra misión es brindar alternativas de los mejores productos posibles en el mercado para satisfacer las necesidades de nuestros clientes.



JD SOLUTIONS

ROLL-UP
SHUTTERS
ACCESSORIES



**40mm
Non Vented
Slat (Lama)
White**

100.090



**55mm
Non Vented
Slat (Lama)
White**

100.105



ROLL-UP SHUTTERS



**Slat Lock Nylon
White 55mm
Flat**

020.215



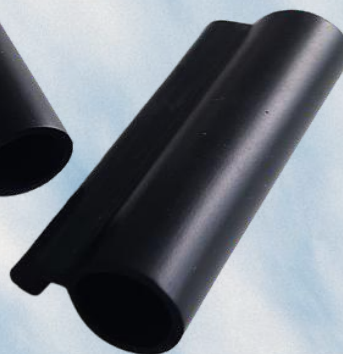
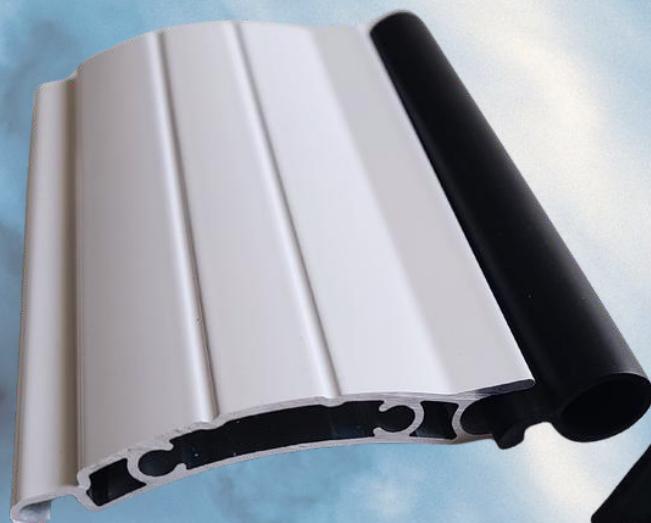
**Slat Lock Nylon
White 55mm
Retention**

020.220



**Bottom Slat Rubber
(Para Lamas 40mm / 55mm)**

020.105



ROLL-UP SHUTTERS

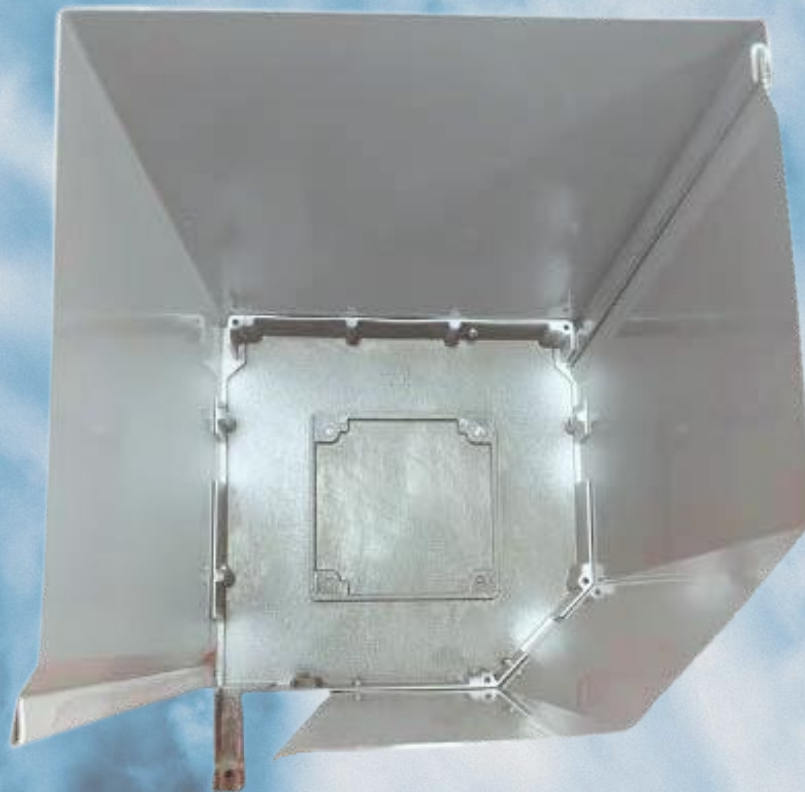


**Housing 7" 45° Front Side -
without Lip - White**

110.110

**Housing 7" 90° Back Side -
White**

110.115



ROLL-UP SHUTTERS



**Housing 8" 45° Front Side -
with Lip - White**

110.120

**Housing 8" 90° Back Side -
White**

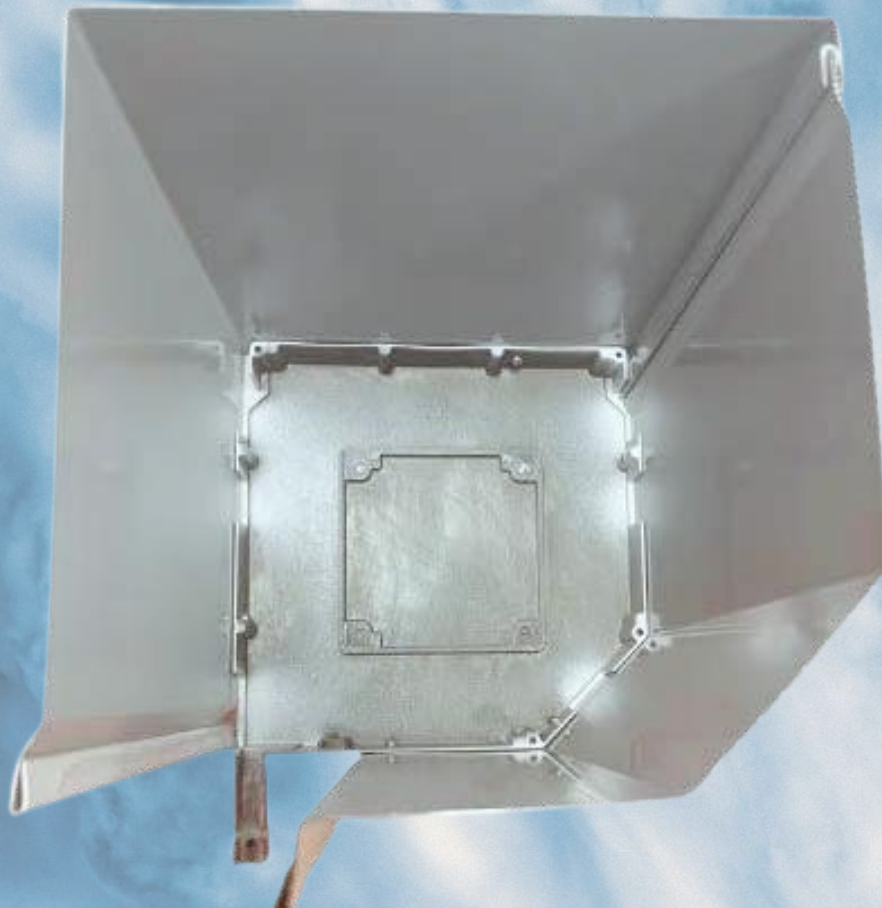
110.125

**Housing 8" 45° Front Side -
with Lip - Bronze**

110.122

**Housing 8" 90° Back Side -
Bronze**

110.127





**Housing 10" 45° Front Side -
with Lip - White**

110.130

**Housing 10" 90° Back Side -
White**

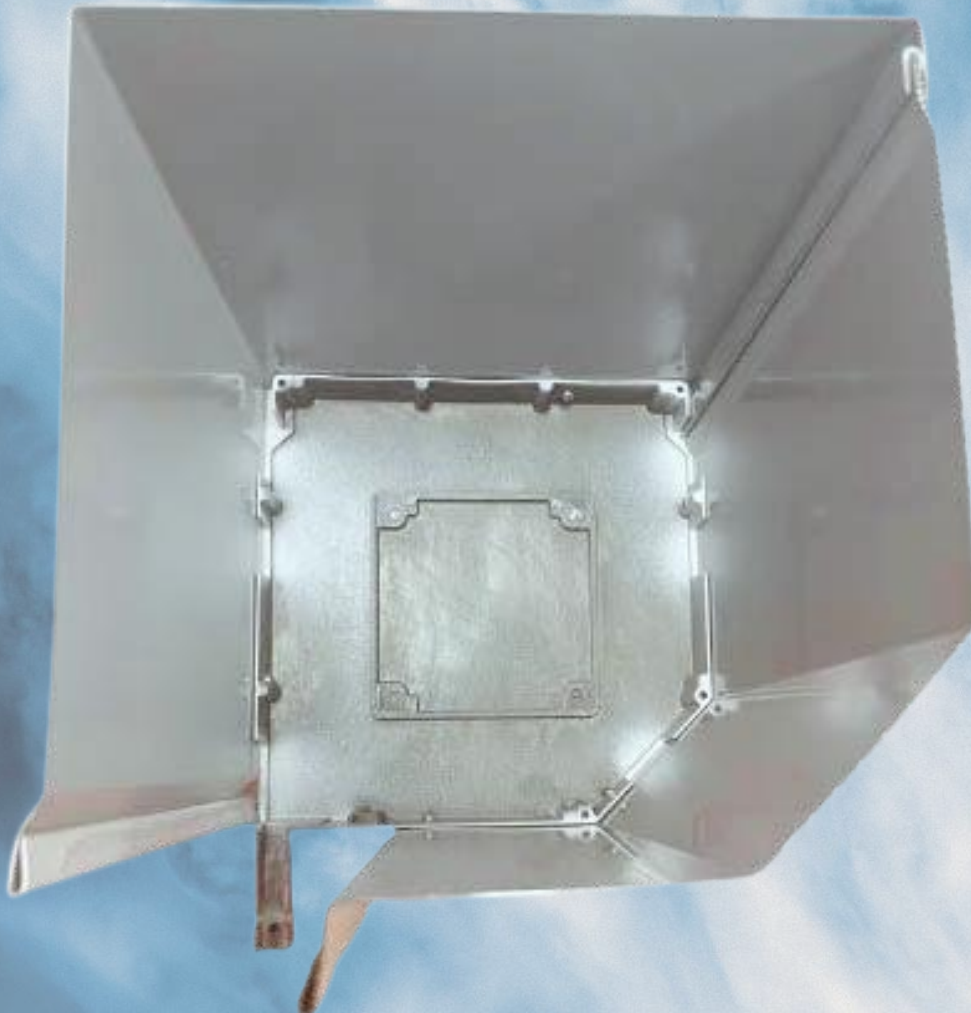
110.135

**Housing 10" 45° Front Side -
with Lip - Bronze**

110.132

**Housing 10" 90° Back Side -
Bronze**

110.137



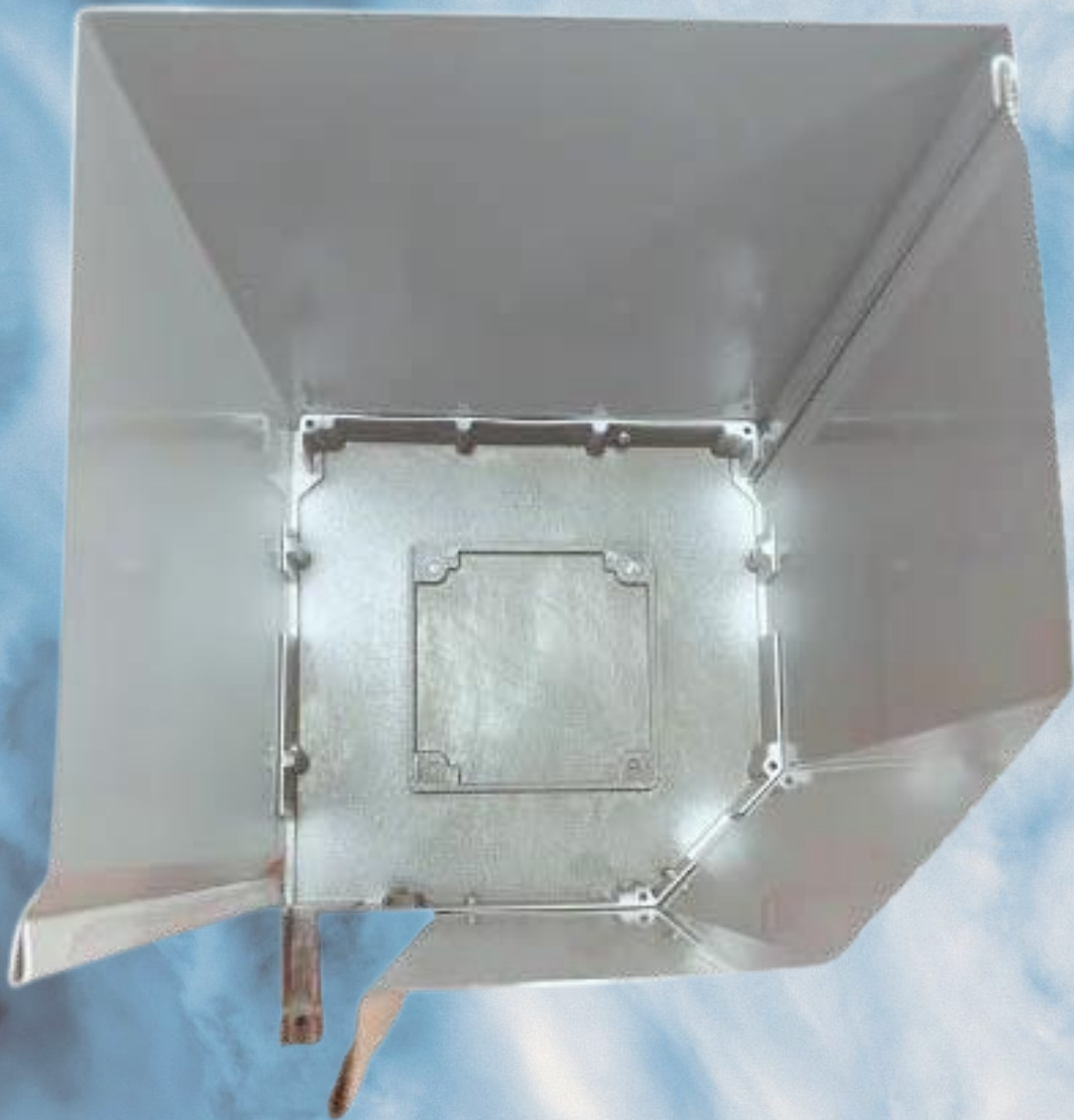


**Housing 12" 45° Front Side -
with Lip - White**

110.145

**Housing 12" 90° Back Side -
White**

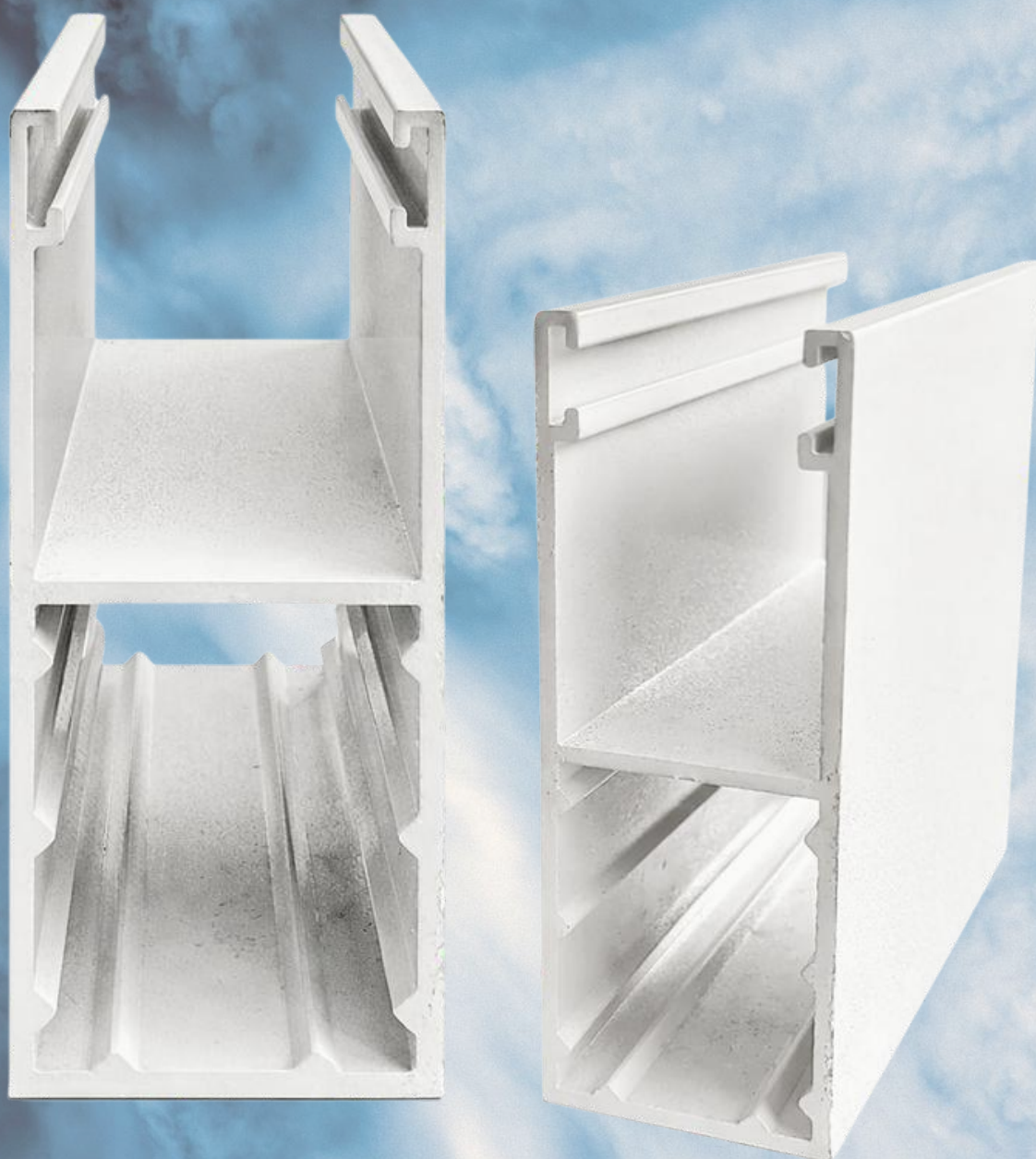
110.150





Track -NON- End Retention Big Pin MAXI 1" x 3" - White

105.090



ROLL-UP SHUTTERS



Track End Retention Big Pin MAXI 1" x 3.5" - White

105.110

Side Rail Rubber for Track End Retention

020.250



ROLL-UP SHUTTERS



Snap Track END Retention Big Pin 3.25" - White

105.130



Snap Track Cover - White

105.135

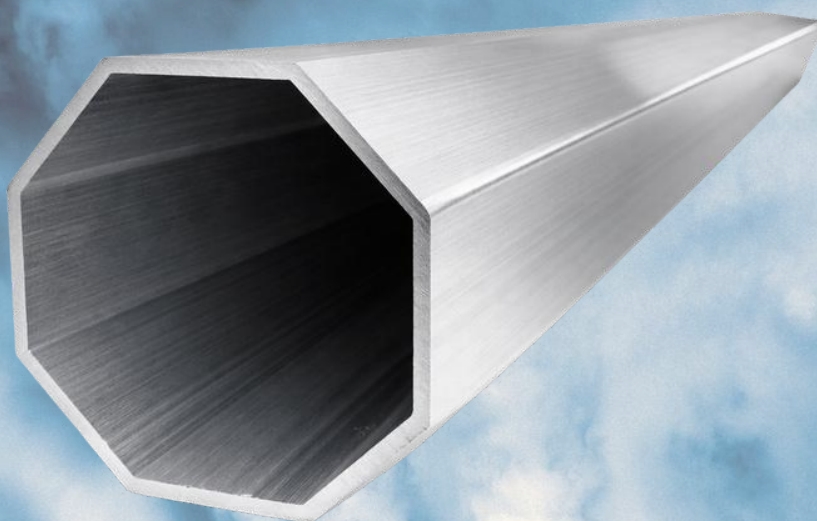


ROLL-UP SHUTTERS



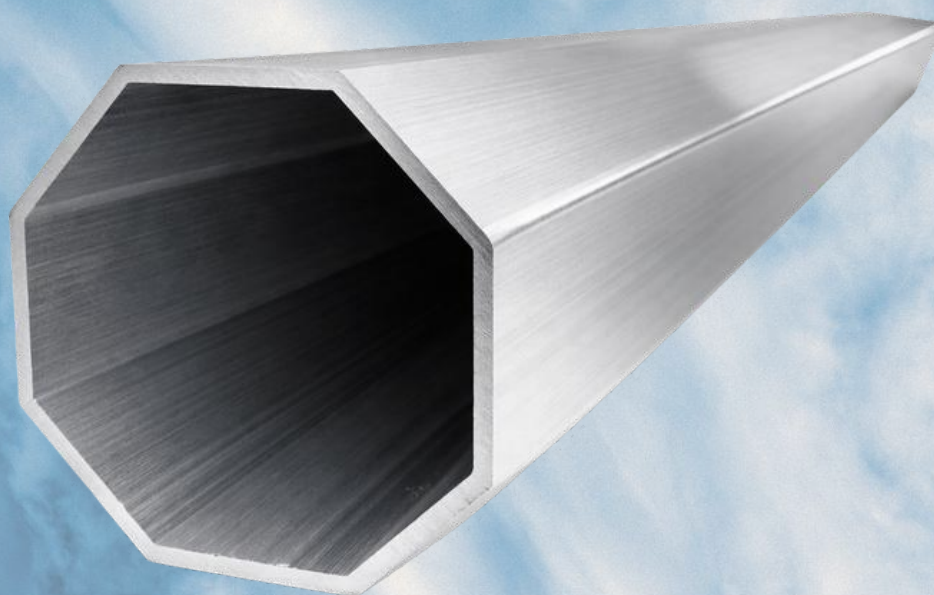
Tubo Octagonal - Aluminio 60mm

105.210



Tubo Octagonal - Aluminio 70mm

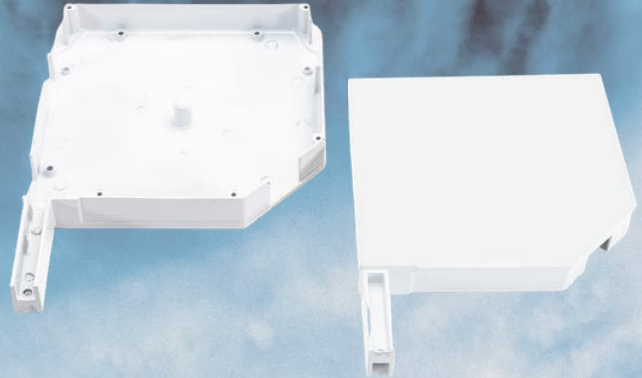
105.220





**End Caps, 45°,
180mm, (7"),
Painted White,
Small Leg**

020.090



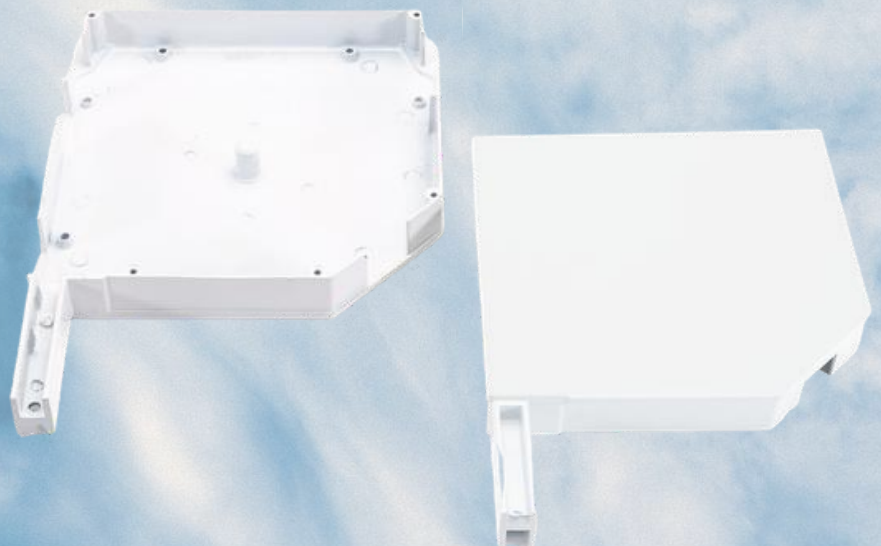
**End Caps, 45°,
205mm, (8"),
Painted White,
Small Leg**

020.107



**End Caps, 45°,
250mm, (10"),
Painted White,
Small Leg**

020.113





**End Caps, 45°,
205mm, (8"),
Painted White,
Big Leg**

020.110



**End Caps, 45°,
250mm, (10"),
Painted White,
Big Leg**

020.115



**End Caps, 45°,
300mm, (12"),
Painted White,
Big Leg**

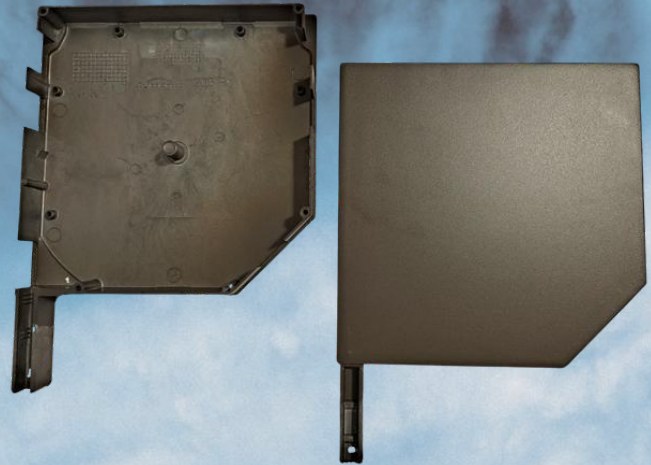
020.120





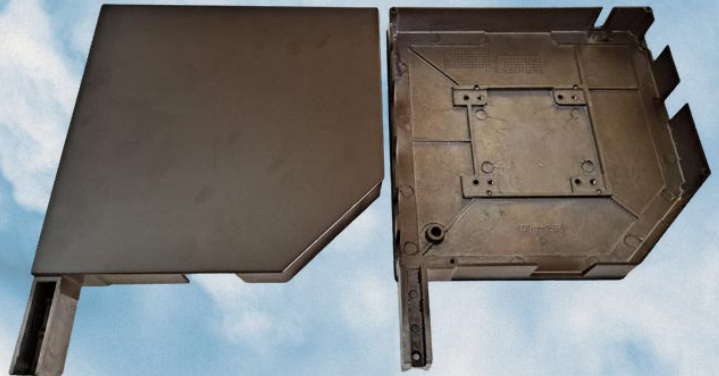
**End Caps, 45°,
205mm, (8"),
Painted Bronze,
Small Leg**

020.108



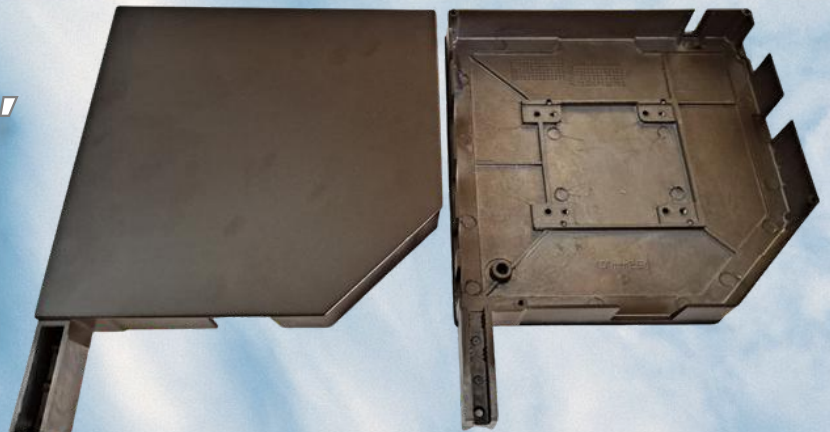
**End Caps, 45°,
205mm, (8"),
Painted Bronze,
Big Leg**

020.111



**End Caps, 45°,
250mm, (10"),
Painted Bronze,
Big Leg**

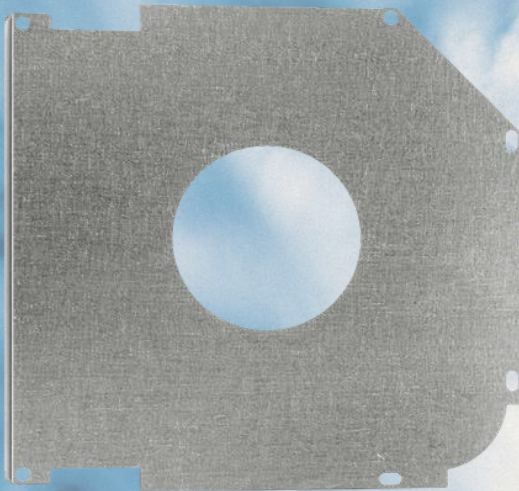
020.117





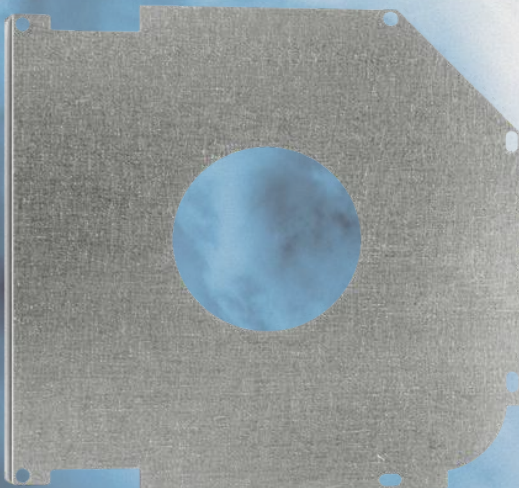
**Security Plate 45°
for End Cap 180mm
(7")
Hole Diameter
72mm**

020.123



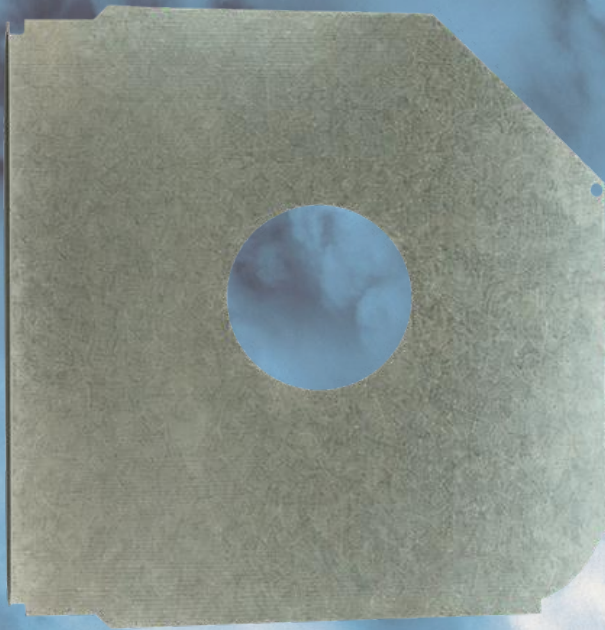
**Security Plate 45°
for End Cap 205mm,
(8")
Hole Diameter
72mm**

020.125



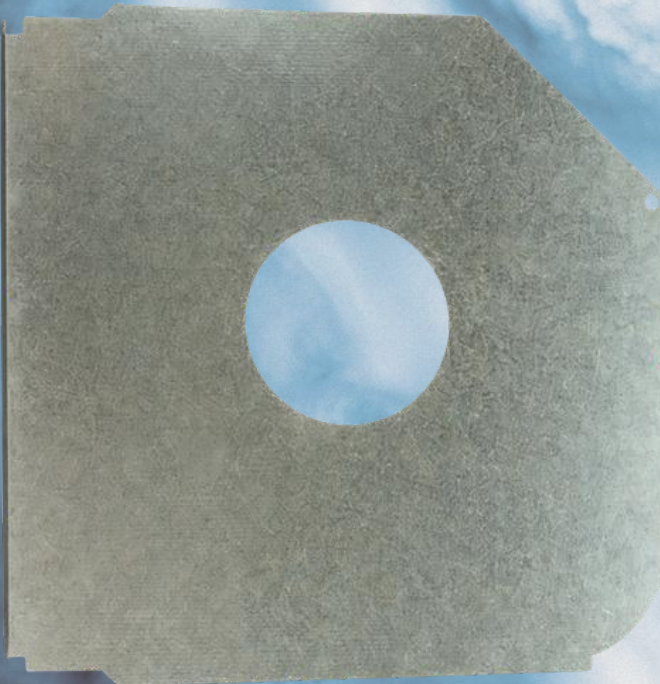
**Security Plate 45°
for End Cap 205mm,
(8")
Hole Diameter
82mm**

020.130



**Security Plate 45°
for End Cap 250mm,
(10")
Hole Diameter
82mm**

020.135



**Security Plate 45°
for End Cap 300mm,
(12")
Hole Diameter
82mm**

020.140



JD SOLUTIONS

☎ (939) 346-2845
✉ info@jdsolutionspr.com



Motor 45-50Nm Switch (Tubo 60 mm / 70 mm)

005.105



Motor 59-100Nm Switch (Tubo 70 mm)

005.110



ROLL-UP SHUTTERS



JD SOLUTIONS

☎ (939) 346-2845

✉ info@jdsolutionspr.com



Motor 59-150Nm Switch (Tubo 70 mm)

005.113



Motor Switch 92M-300/10 Switch (Tubo 100 mm)

005.114



ROLL-UP SHUTTERS



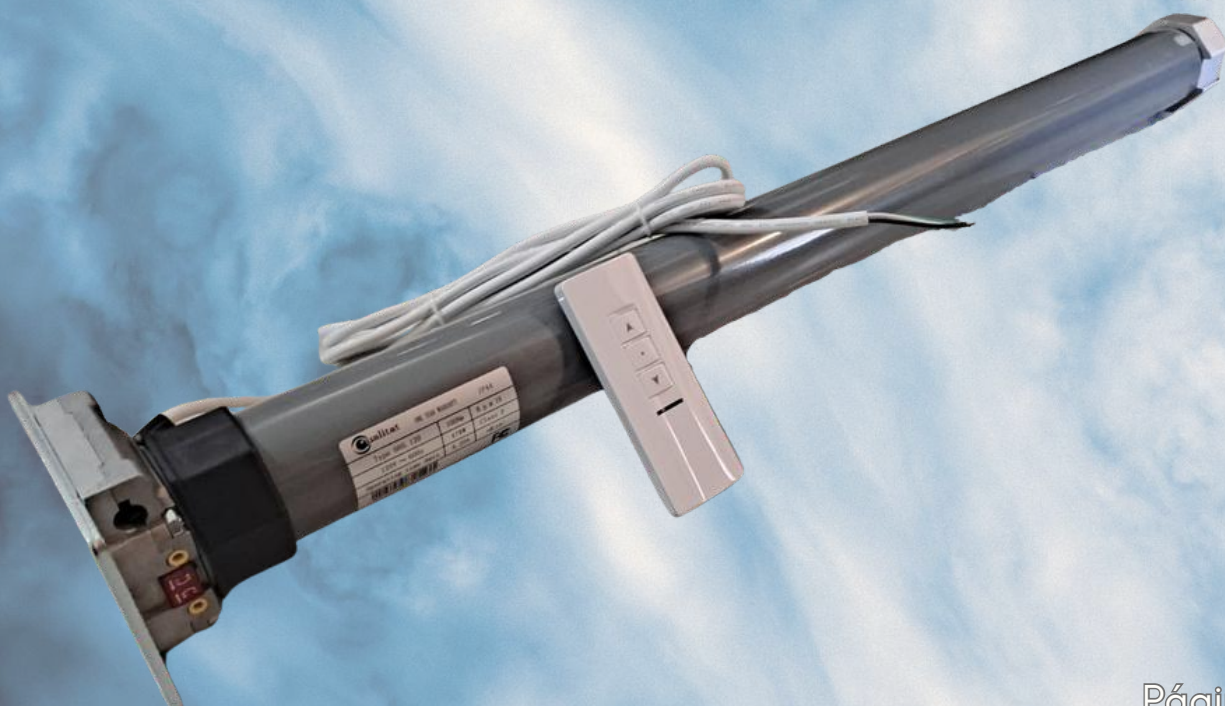
**Motor 45-50Nm
 Beeper
 (Tubo 60 mm / 70 mm)**

005.115



**Motor 59-100Nm
 Beeper
 (Tubo 70mm)**

005.120



ROLL-UP SHUTTERS



**Motor 59-140Nm
 Beeper
 (Tubo 70mm)**

005.125



ROLL-UP SHUTTERS



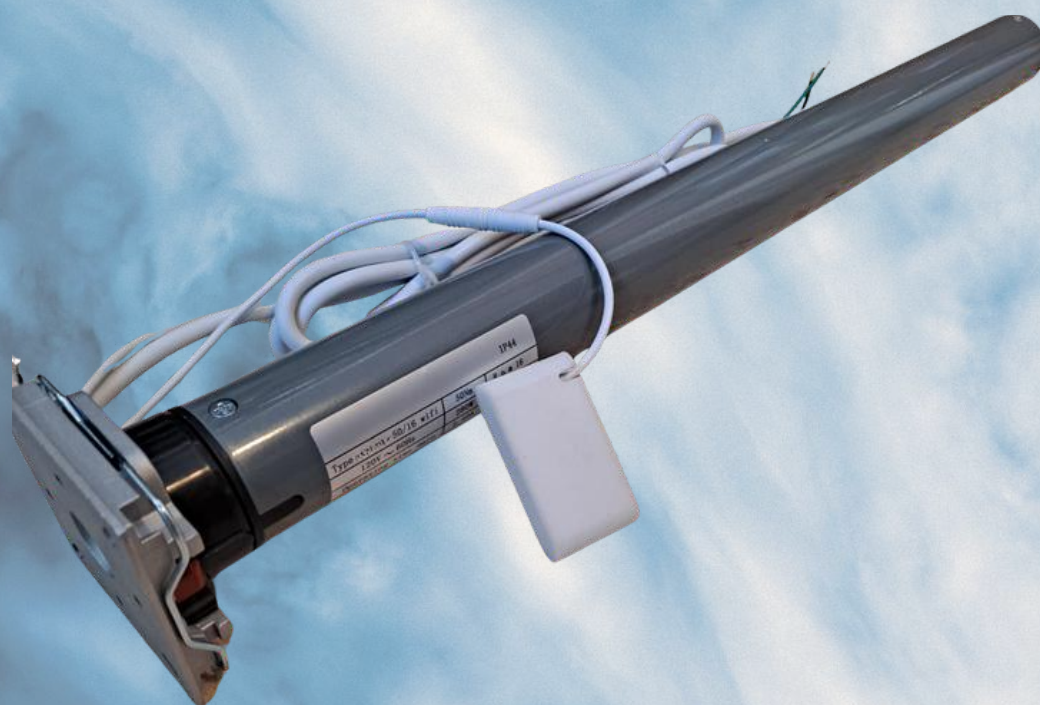
**Motor 45M-50/16 Beeper
Standard OBSTACLE
(Tubo 60mm)**

005.080



**Motor 45M-50/16 Beeper
Standard WI-FI
(Tubo 60mm)**

005.085



ROLL-UP SHUTTERS



**Beeper
1 Channel**

005.130



**Beeper
8 Channels**

005.135

**Beeper
16 Channels**

005.191



**Beeper/Switch,
1 Channel Push Button
Surface Mounting
(Pared)**

005.175



**Beeper/Switch,
8 Channels Push Button
Surface Mounting
(Pared)**

005.180



**Beeper 1
Channel
Multi Code**

005.131



**Beeper 5
Channel
Multi Code**

005.134



**Beeper 15
Channel
Multi Code**

005.138

ROLL-UP SHUTTERS



Receiver "Mini"

005.140



Receiver 800W

005.145



Receiver 1600W

(Sensor óptico, Switch Botón, Switch Llave, y Luz)

005.147



ROLL-UP SHUTTERS



Sensor Optico

10M/33Ft.

005.148



ROLL-UP SHUTTERS



1-Channel Keychain Emitter

005.168



3-Channels Keychain Emitter

005.170



1-Channel Keychain Emitter Multi Code

005.166



ROLL-UP SHUTTERS



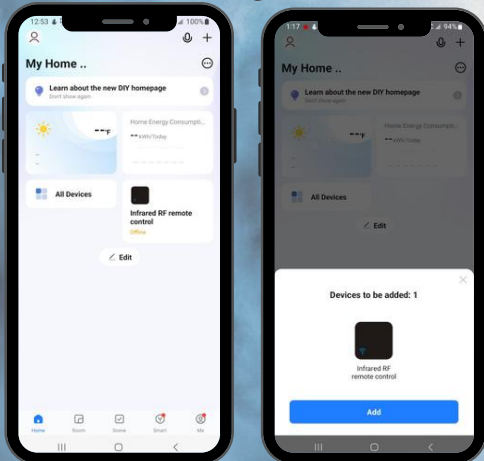
HUB WI-FI 433Mhz

005.185



HUB WI-FI 433Mhz

005.187

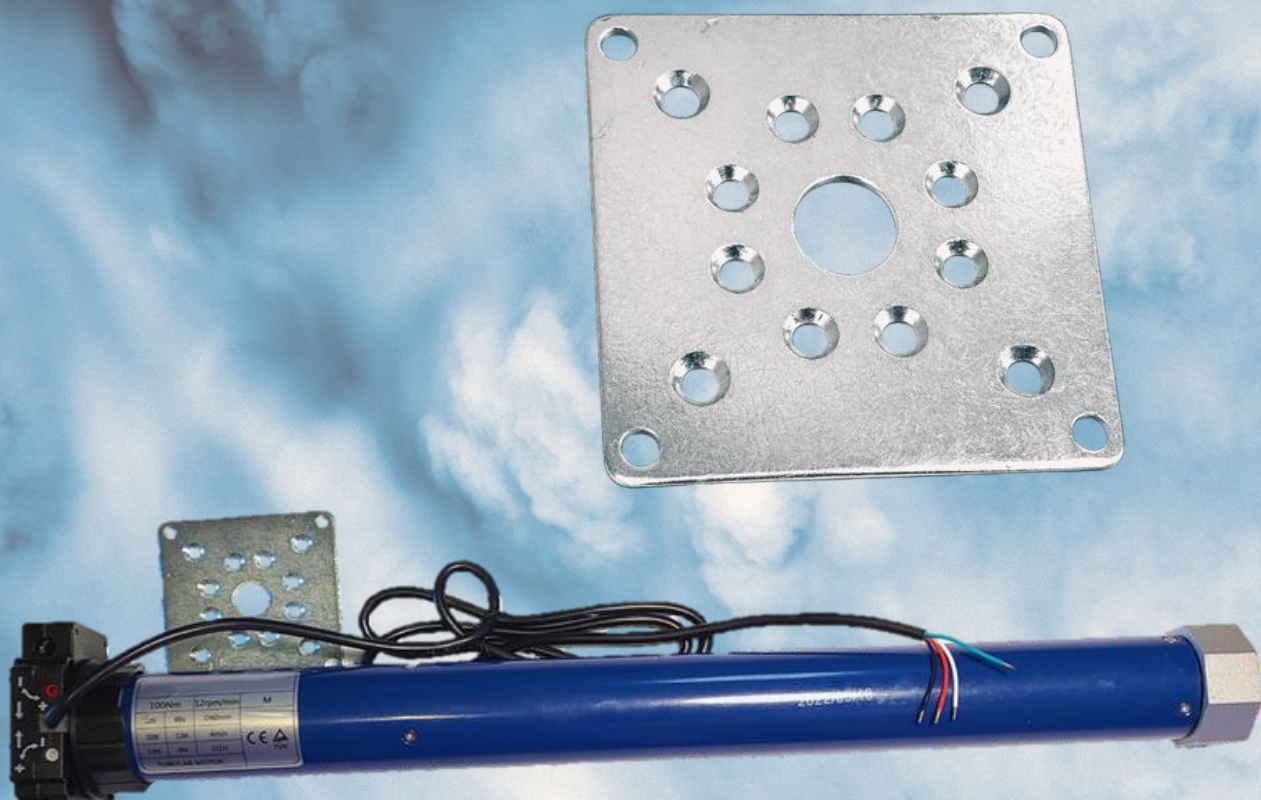


ROLL-UP SHUTTERS



Universal 100 x 100 Plate

005.165

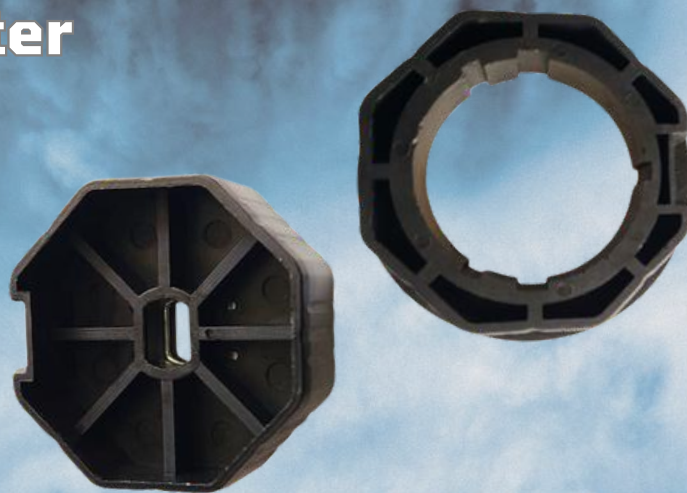


ROLL-UP SHUTTERS



**Crown & Drive Adapter
Motor 45/Serie 50
(Tubo 60mm Octagonal
para Roll-Up)**

✓ Nota: Forma parte de las piezas que van incorporadas a la caja del motor.



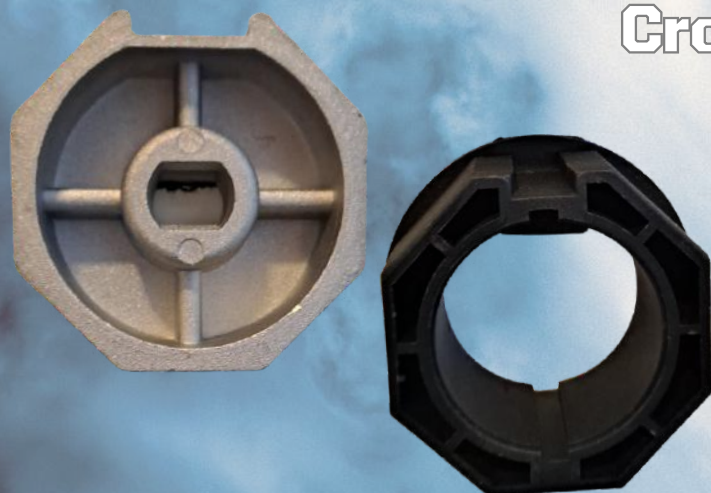
**Crown & Drive Adapter
Motor Beeper
45/Serie 50
(Tubo 70mm Octagonal
para Roll-Up)**

005.155



**Crown & Drive Adapter
Motor Switch
45/Serie 50
(Tubo 70mm Octagonal
para Roll-Up)**

005.153





**Crown & Drive Adapter
Motor 45/Serie 500
(Tubo 70mm para "Awning" o
Cortina Retractable)**

015.130



**Crown & Drive Adapter
Motor 45/Serie 500
(Tubo 78mm para "Awning" o
Cortina Retractable)**

015.140



**Crown & Drive Adapter
Motor 59/Serie 600
(Tubo 78mm para "Awning" o
Cortina Retractable)**

015.150





Two Button Momentary Switch Surface Mount - White

010.103



Two Button Momentary Switch Surface Mount - Black

010.104





**Push Button
SINGLE
MOMENTARY
Switch**
010.105

**Push Button
SINGLE
MANTAINED
Switch**
010.106

**Push Button
DOUBLE
MOMENTARY
Switch**
010.107





**Leviton Decora
Switch
Mantained -
White**
010.145

**Leviton Decora
Switch
Momentary-
White**
010.142

**Leviton Decora
Screwless
Wallplate -
White**
010.150

ROLL-UP SHUTTERS



Key Selector 2A

010.140



ROLL-UP SHUTTERS



Switch Llave 4A

010.110



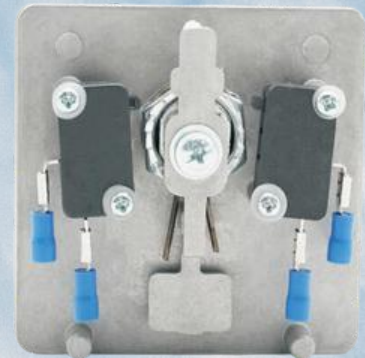
Switch Llave 4B

010.111



Switch Llave 2A

010.115



ROLL-UP SHUTTERS



Switch Llave 2B

010.116



Switch Llave 1A

010.125



Switch Llave 3B

010.130



ROLL-UP SHUTTERS



Keypad

010.160



Keypad Wi-Fi

010.161



ID Card

010.175



ID Keytag

010.177



Conectores Eléctricos

010.185





Keypad “Rolling Code”

010.162

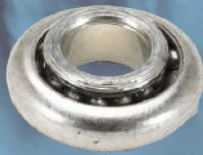


ROLL-UP SHUTTERS



**Ball Bearing
OD 28mm,
ID 12mm
Steel Inner Ring**

020.155



**Ball Bearing
OD 42mm,
ID 12mm
Steel Inner Ring**

020.160



**Plastic Cap,
Octagonal 60mm,
Bearing Housing
OD 28mm**

020.170



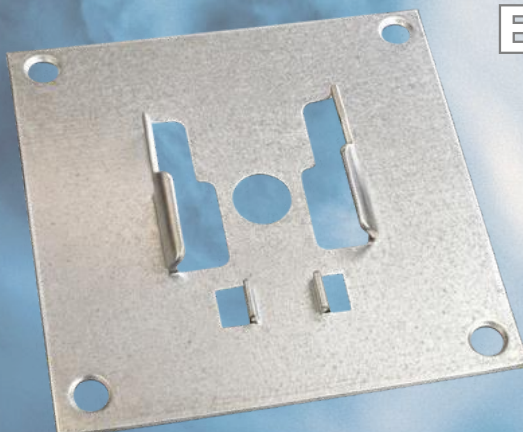
**Bracket for Bearing,
OD 42mm,
3.0mm
Thick Plate**

020.165



**Ball Bearing Plate
100 x 100,
OD 42mm**

020.166



ROLL-UP SHUTTERS



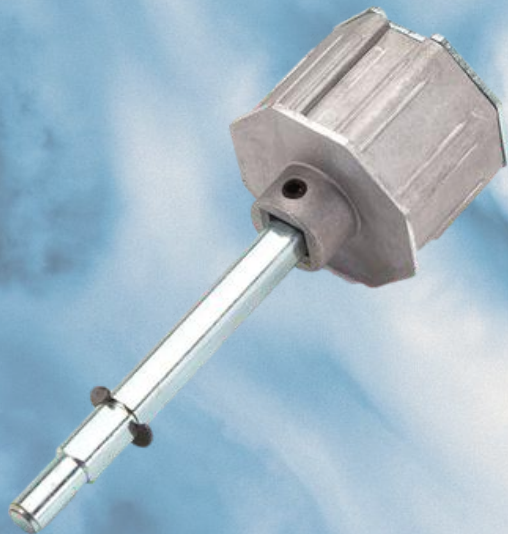
**Adjustable Aluminum
Idler, Octagonal
60mm**

020.175



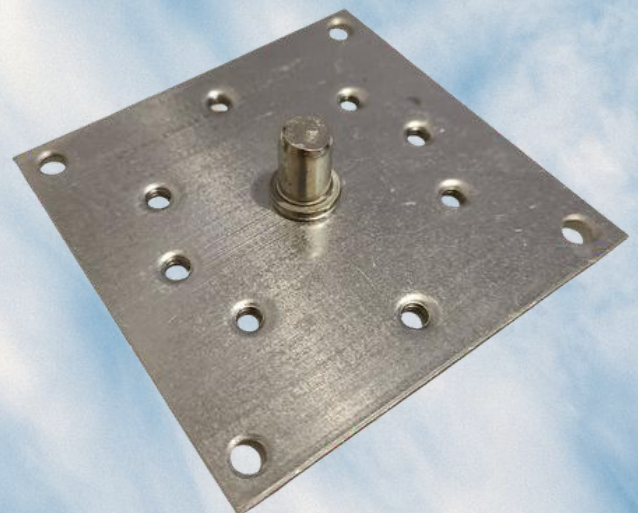
**Adjustable Aluminum
Idler, Octagonal
70mm**

020.180



**Idler Bracket
100mm x 100mm**

020.225





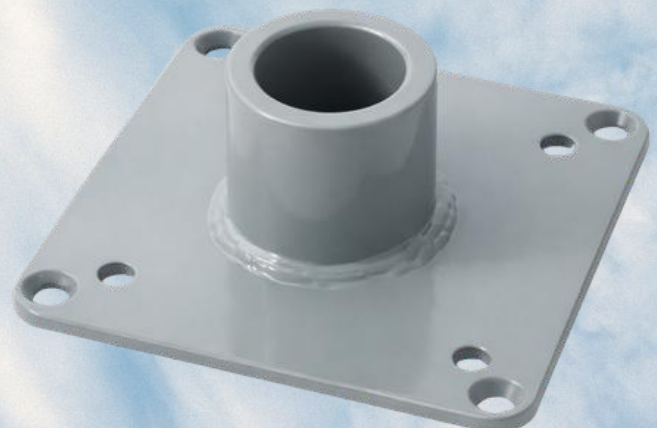
Adjustable Idler 100mm Motor 300Nm

020.184



Idler Bracket 100mm Motor 300Nm

020.169



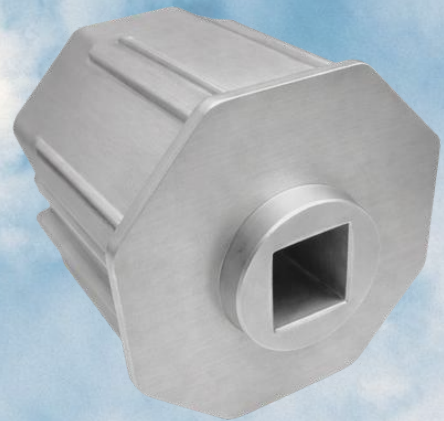


**Gearing Winch
"SYDNEY", 1:11,
Plastic Case with
End Stroke
(Hexagonal Pivot)**

020.185

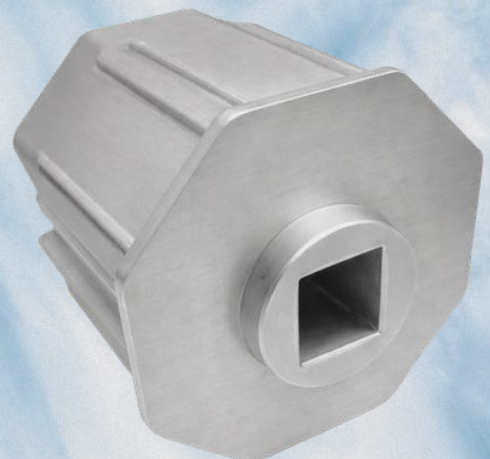
**Aluminum Gear Cap
Insert 60mm
for Gearing Winch**

020.230



**Aluminum Gear Cap
Insert 70mm
for Gearing Winch**

020.235

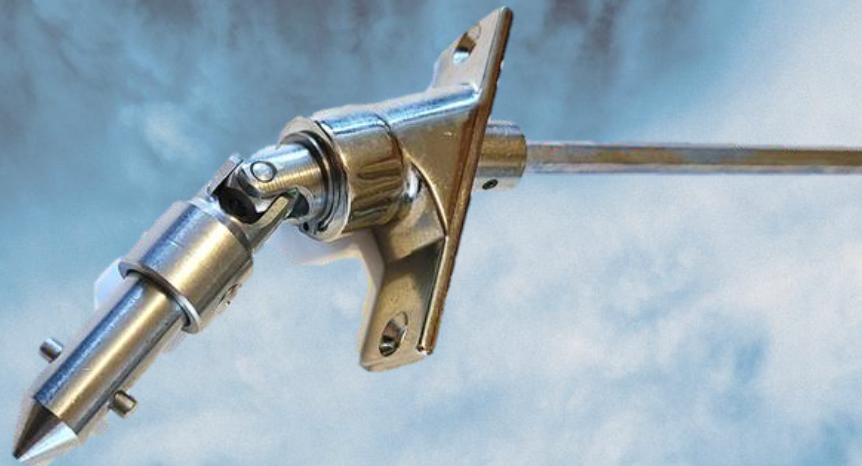


ROLL-UP SHUTTERS



**Cardan Joints,
Stainless Steel
Joint Elements,
Hexagonal,
7mm Diameter,
500mm Long,
2 Screws**

020.195



✔ Nota: La bala es removible para seguridad.

**Cardan Joints,
Stainless Steel
Joint Elements,
Hexagonal,
7mm Diameter,
500mm Long,
4 Screws**

020.197





**Handcrank, 14mm Diameter,
with Bayonet Coupling,
1.5mm Long**

020.200



ROLL-UP SHUTTERS



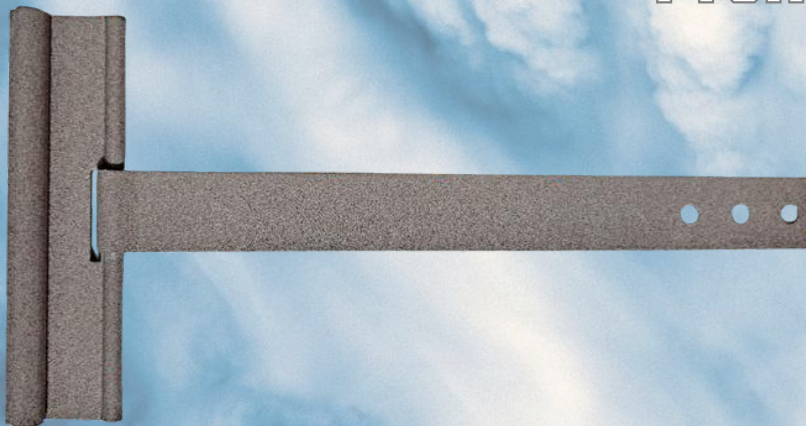
Security Spring with Aluminum Profile for "MINI"

Remache
020.202

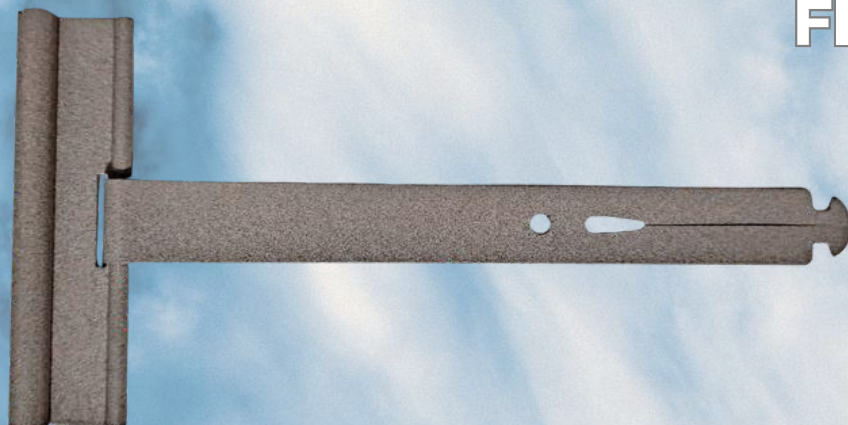


Security Spring with Aluminum Profile for "MAXI"

Remache
020.205



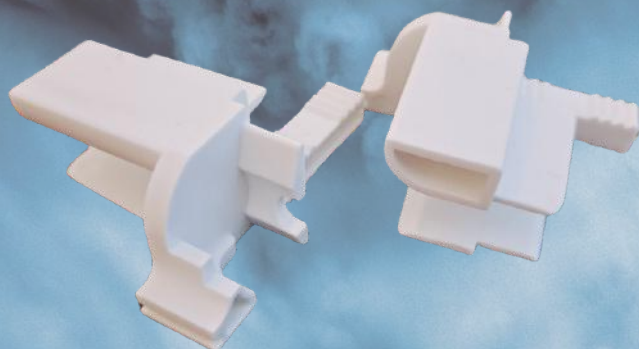
Flecha
020.210





**Entry Guide
Maxi**

020.143



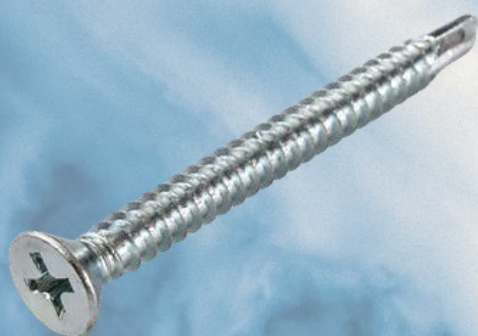
**Plastic Stopper
22 x 36mm**

020.145



**Cap for Aluminum
Guide Rail 16mm (5/8")**

020.150



**Tornillo para
Lama Roll-Up
Self Drill #10 x 2"
FH Phil
Zinc Plated**

200.230

**Remaches Aluminio
3/16" x 5/16"**

200.240



ROLL-UP SHUTTERS



JD SOLUTIONS

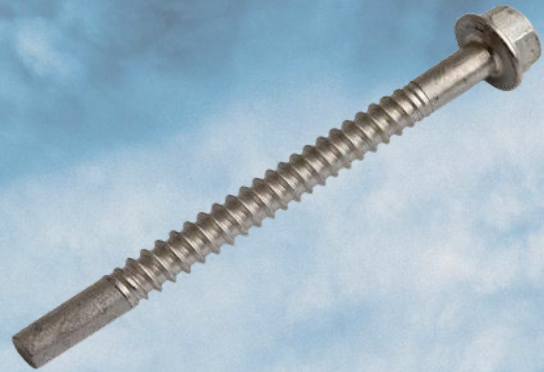


ACCORDION SHUTTERS ACCESSORIES



Accordion Hex Washer Head Screw #14 x 3"

030.110



Accordion Lock T-Handle

030.145



Chrome



White

ACCORDION SHUTTERS



**Accordion Wheel
Carriage #14
Stainless Steel**

030.120



**#14 Hat Bushing -
White**

030.125



**5/8" Washer
Stainless Steel**

030.130



**1/2" x 3/4" Nylon
Bushing Medium -
White**

030.135



**1/2" x 7/8" Nylon
Bushing Long -
White**

030.140



ACCORDION SHUTTERS



JD SOLUTIONS

CLEAR STORM PANELS & MORE



Lexan "Heavy" Storm Panel 2" x 12" (Tipo 2)

200.100



**1/4"-20 Washered
Wingnut Heavy
Duty (Mariposa)**

200.120



**1/4"-20 x 3/4" Hex
Screw S.S.
(Tornillo Mariposa)**

200.123



**1/4" x 1 3/4"
Ultracon Concrete
Screw HWH - White**
200.170



**Disco Abrasivo
para Aluminio
4 1/2"**
200.180



Stretch Wrap Film
200.250

CLEAR STORM PANELS AND MORE



AMSOIL Spray Grease White Lithium

250.100



AMSOIL P.i. Performance Improver Gasoline Additive

250.105



CLEAR STORM PANELS AND MORE



JD SOLUTIONS

**Tu aliado en soluciones confiables
para roll-ups, acordeones y más.**

¡Haz tu pedido hoy mismo!

¿Tienes preguntas o necesitas ayuda?

Nuestro equipo está aquí para asistirte.

Ventas: (787) 568-5109 | (939) 346-2845

Email: info@jdsolutionspr.com

**Síguenos en nuestras redes sociales:
[@jdsolutionspr](#)**

Facebook | Instagram | TikTok | YouTube

**Mantente al día con nuestras promociones, nuevos
productos y consejos útiles.**

QR Code

